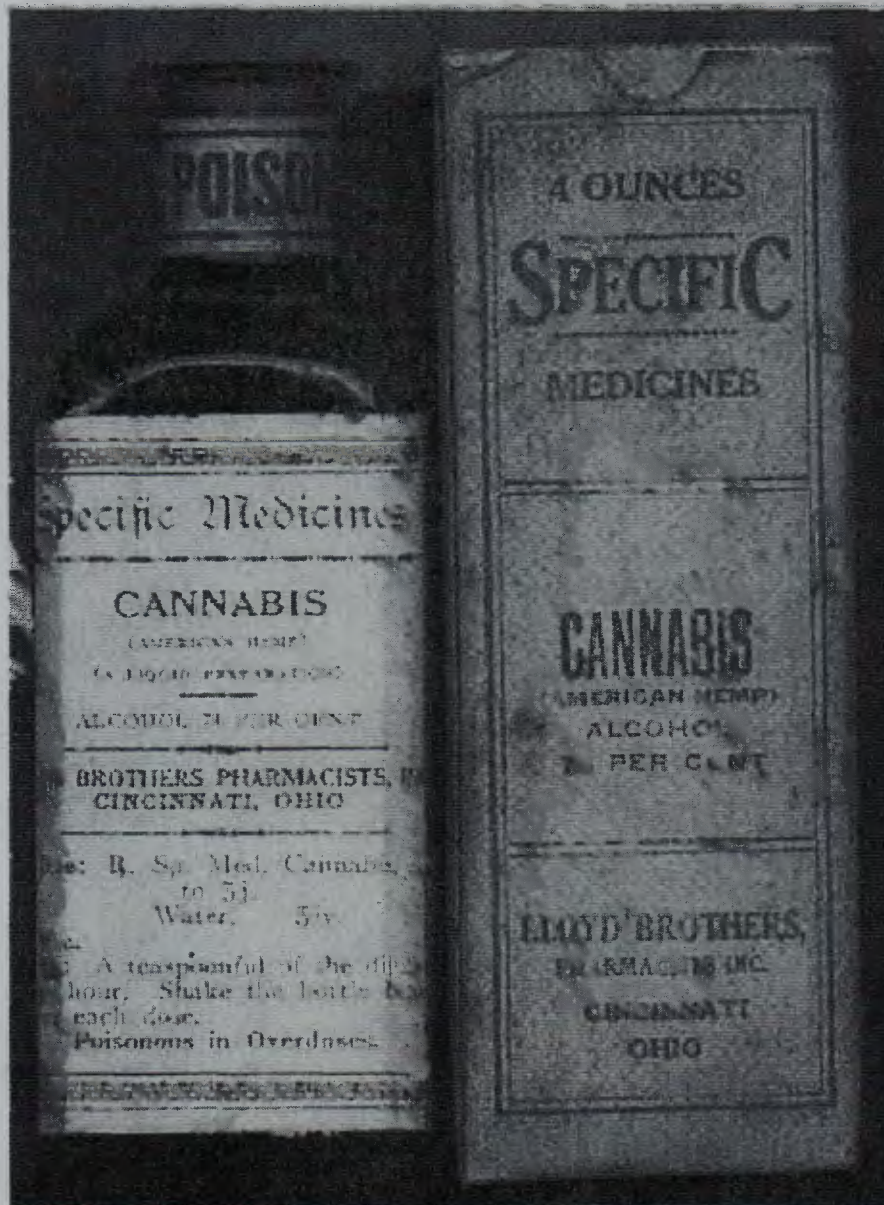


ADDENDUM-K

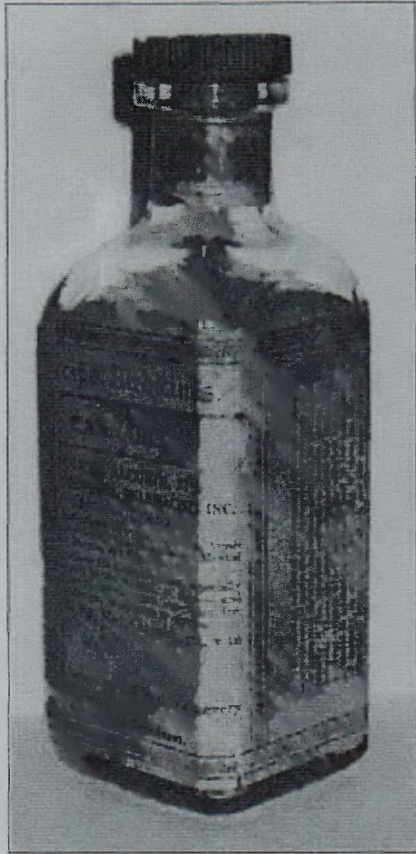
PERCENTAGE OF FORMULATION

Below are shown various photos of Lloyd Brothers "specific Medicines" Cannabis Tincture bottles/Labels, showing the percentage of Alcohol present. Note the differences range from 74% all the way up to 81%. This is due to the differences of active (Oily plant resin material) that was extracted per a given volume of plant material.

As stated elsewhere, the formulation [as per eclectic standards) called for 8 oz of plant matter per each eventual liquid pint of medicine.



Alcohol = 74%



Alcohol = 81%

Specific Medicines.

CANNABIS.

ABSOLUTE ALCOHOL 74%

LLOYD BROTHERS, CINCINNATI, O.

Specific Indications: Nervous depression, tendency to melancholia, with wakefulness. Mental illusions or delusions, and forgetfulness.

Uses: To relieve the above conditions, especially if there be pain in the stomach, or distress and discomfort in the pelvic organs especially; frequency of urination, or tenesmus or cystitis.

Dose: ℞. Sp. Med. Cannabis, gtt. v to
℥ss.

Water, ℥iv.

Misc.

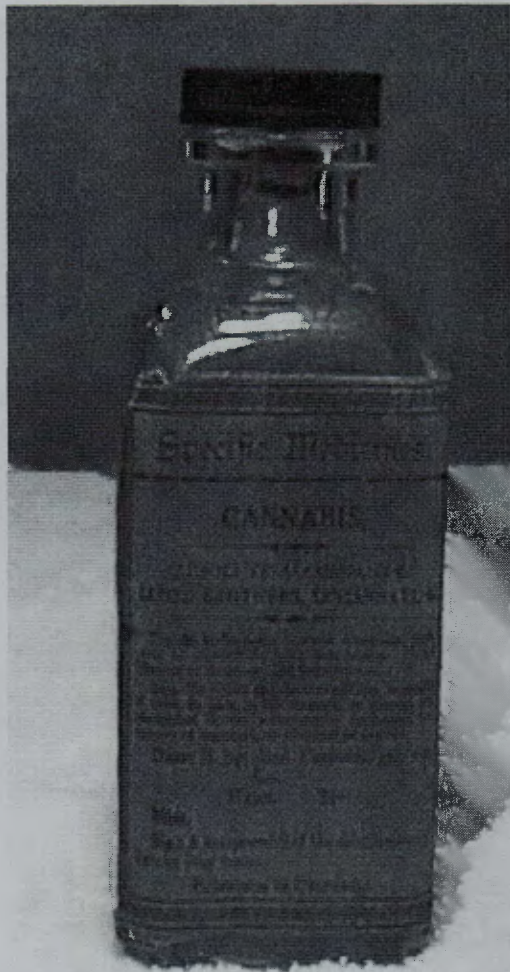
Sig.: A teaspoonful of the dilution every two to four hours.

Poisonous in Overdoses.

Alcohol = 74%



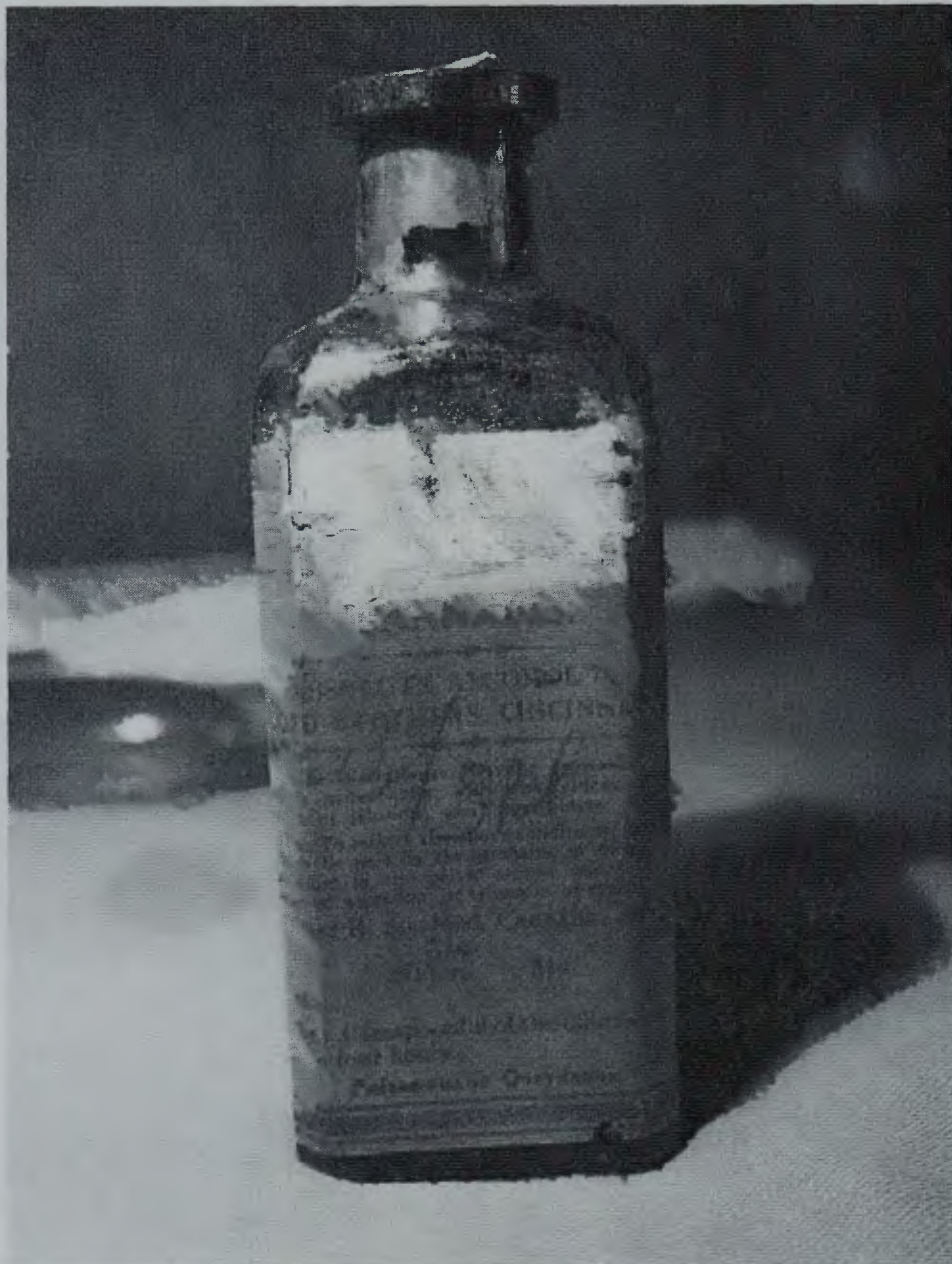
Alcohol = 81%



Alcohol = 74%



Alcohol = 74%



Alcohol = 79%