

KEY MAP
SCALE: 1"=125'

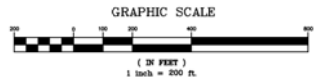
HORSEBLOCK ROAD (C.S. 16)

NOTE:
FOR PROPERTY TAX MAP
INFORMATION FOR EACH PARCEL,
SEE DRAWING C-SK-03.

NOTE:
ALL PROPERTIES SHOWN WITHIN 500' OF SUBJECT
PARCELS OR CONTIGUOUS PROPERTIES ARE TOWNED L1,
EXCEPT FOR ID #'S 16, 76, AND 99.



500' RADIUS MAP
SCALE: 1"=200.0'



I do hereby certify that the area map accurately describes the uses of the property surrounding the subject premises as of 2/22/22 (date).
signature _____

| REV | DATE | BY | CHK | APPR | ISSUED FOR | REVISION DESCRIPTION |
|-----|----------|----|-----|------|--------------------|---------------------------------|
| 3 | 11/07/13 | CE | JC | WRS | SDS | UPDATE INFORMATION |
| 2 | 07/02/12 | CE | JC | WRS | SPECIAL USE PERMIT | REVISED FOR TECHNICAL COMMENTS |
| 1 | 05/10/12 | CE | JC | WRS | SPECIAL USE PERMIT | REVISED FOR UPDATED INFORMATION |
| 0 | 06/14/11 | CE | JC | WRS | SPECIAL USE PERMIT | INITIAL ISSUE |

PROJECT ENGINEER
J. SASSO

ENGINEER
W. R. SCHLUMPF

DATE
06/09/11

SCALE
AS NOTED

DRAWN
CJ

CHECKED
WRS

APPROVED
WRS

APPROVED
JS

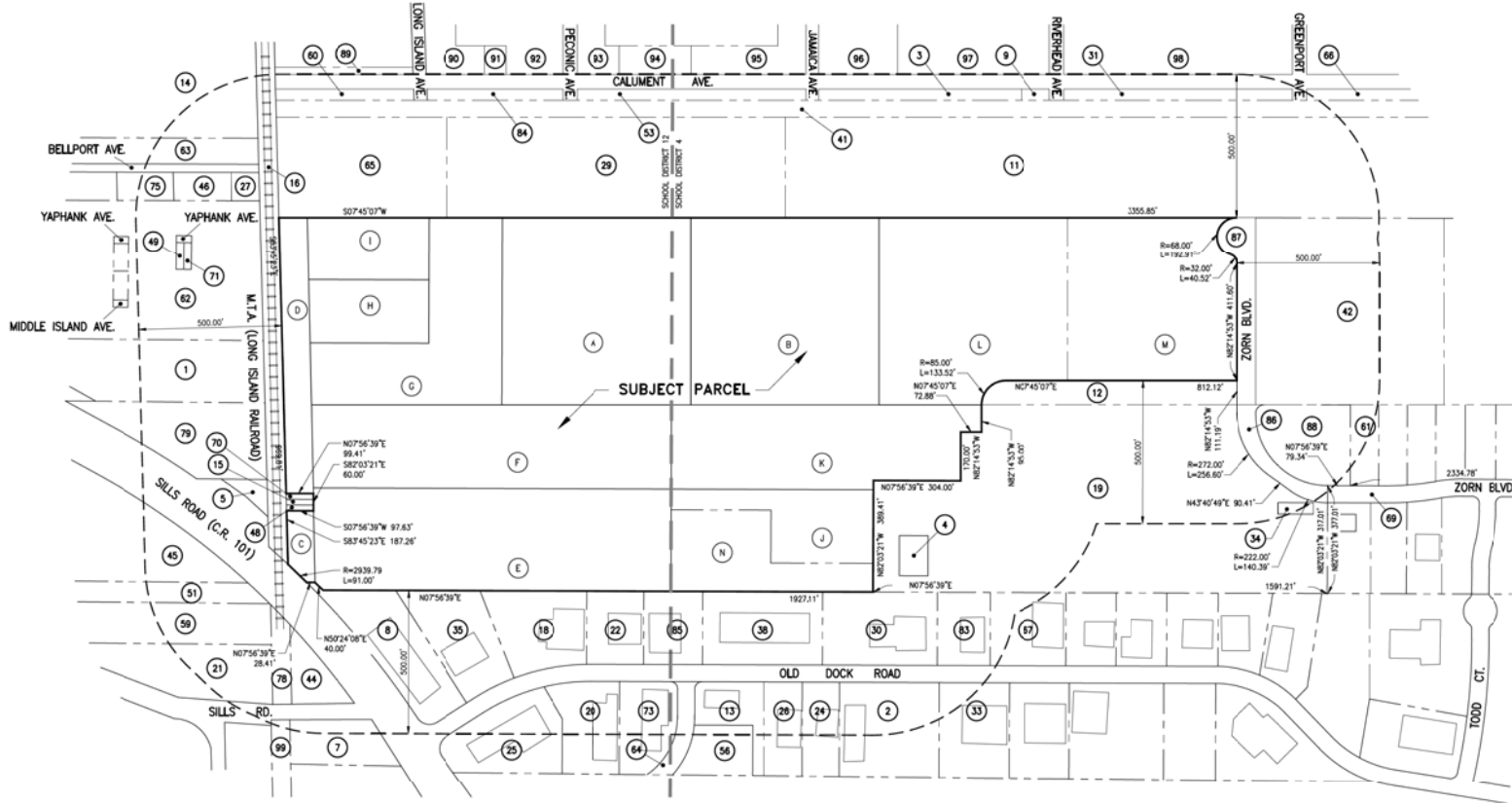


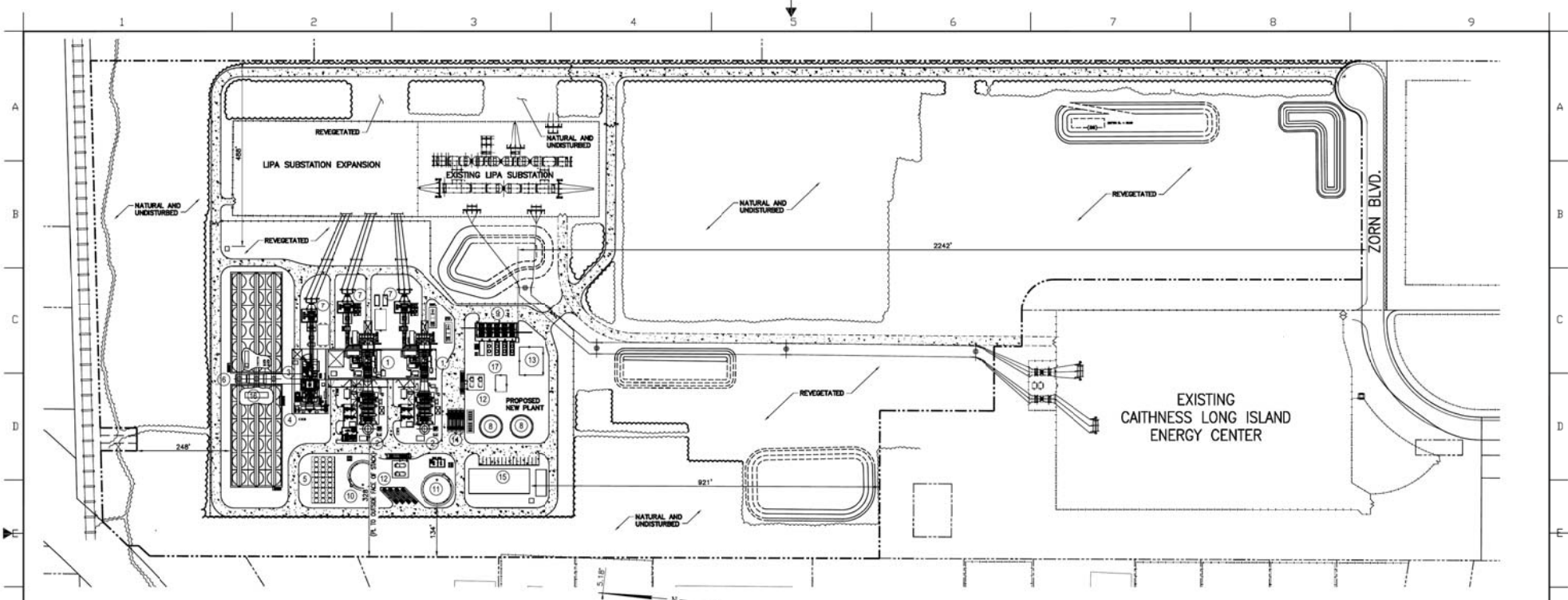
325 Sunrise Highway
West Islip, New York 11795

CAITHNESS LONG ISLAND II, LLC

500' RADIUS MAP

DRAWN BY: 24"X36" Scale: E
WORK BOOK: C-SK-02





CONCEPTUAL SITE PLAN
SCALE: 1"=120.0'

LEGEND :

- | | |
|------------------------------------|--|
| ① GAS TURBINE & INLET FILTER HOUSE | ⑩ DEMIN. WATER STORAGE TANK |
| ② HEAT RECOVERY STEAM GENERATOR | ⑪ RAW WATER STORAGE TANK |
| ③ STEAM TURBINE / GENERATOR | ⑫ AMMONIA, WASTE WATER & WASTE OIL STORAGE TANKS |
| ④ TURBINE BUILDINGS | ⑬ GAS METERING |
| ⑤ FIN FAN COOLERS | ⑭ FUEL OIL/AMMONIA UNLOADING STATION |
| ⑥ AIR COOLED CONDENSER | ⑮ ADMIN / MAINTENANCE BLDG |
| ⑦ STEP UP TRANSFORMER | ⑯ POWER CONTROL MODULES |
| ⑧ FUEL OIL STORAGE TANKS | ⑰ BULK HYDROGEN STORAGE |
| ⑨ REGULATING, COMPRESSOR AREA | |

- | | |
|-----|----------------------|
| --- | PROPERTY LINE |
| --- | EXISTING FENCE LINE |
| --- | PROPOSED FENCE LINE |
| --- | DRAINAGE DIVIDE LINE |
| --- | EXISTING TREE LINE |
| --- | PROPOSED TREE LINE |
| --- | EXISTING CONTOUR |
| --- | PROPOSED CONTOUR |

ZONING REQUIREMENTS:
(TOWN BOARD SPECIAL PERMIT FOR ELECTRIC GENERATING FACILITY)
BASED ON L-1 ZONE

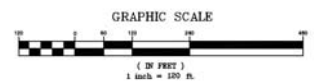
| | REQUIRED | PROPOSED |
|--|---------------|---------------------------|
| FRONT YARD SETBACK | 100' | 2242' |
| REAR YARD SETBACK | 100' | 248' |
| SIDE YARD SETBACK | 50' | 134' |
| MAXIMUM F.A.R. | 25% | 0.8% |
| MINIMUM LOT AREA | 20 ACRES | 3,549,589 SF (81.48 AC.±) |
| MINIMUM WIDTH OF LOT | 200' | 575' |
| MINIMUM NATURAL AND UNDISTURBED BUILDING OR STRUCTURE HEIGHT | 30' | APPR. 35' |
| GENERATION BUILDING (HIGH-BAY) | 50'/3 STORIES | 108' |
| GENERATION BUILDING (LOW-BAY) | 50'/3 STORIES | 85' |
| AIR COOLED CONDENSER | 50'/3 STORIES | 97' |
| HEAT RECOVERY STEAM GENERATOR (HRSG) | 50'/3 STORIES | 97' |
| INLET FILTER HOUSING | 50'/3 STORIES | 81' |
| STACK HEIGHT | 125' | 170' |
| STACK SETBACK (150% OF STACK HEIGHT) | 255' | 328' |
| ACCESSORY USE | | |
| SWITCHYARD EQUIPMENT | - | 50' (MAX.) |
| SWITCHYARD SERVICE BUILDING | 50'/3 STORIES | 20' (MAX.) |

SUFFOLK COUNTY TAX NUMBERS

| |
|---|
| DISTRICT: 0200 SECTION: 704 BLOCK: 02 LOT: 41.1, 41.2, 41.3, 41.4, 41.5, 41.6, & 41.7 |
| DISTRICT: 0200 SECTION: 740 BLOCK: 03 LOT: 1.2, 2, 6, 7, & 8 |
| DISTRICT: 0200 SECTION: 777 BLOCK: 02 LOT: 1.1 & 2.6 |

SITE DATA

| | |
|--|--|
| TOTAL AREA OF SITE: | = 3,549,589 SF (81.48 AC.±) |
| TOTAL AREA OF BUILDINGS | = 25,000 SF |
| AREA OF EXISTING AND PROPOSED SUBSTATION | = 251,899 SF (5.78 AC.±) |
| AREA OF DISTURBANCE: | 1,971,463 SF |
| AREA OF NATURAL VEGETATION TO REMAIN: | 1,243,766 SF |
| INTENDED USE OF PROPERTY: | ELECTRIC GENERATION FACILITY |
| DEPTH TO GROUNDWATER: | APPROXIMATELY 65' |
| ZONING: | L INDUSTRIAL 1 DISTRICT (LIGHT INDUSTRY) |



CONTRACTOR SHALL VERIFY ALL CONDITIONS ON JOB SITE & NOTIFY PROJECT ENGINEER OF ANY VARIATIONS FROM CONDITIONS SHOWN ON THESE DRAWINGS BEFORE PROCEEDING WITH ANY CONSTRUCTION.

| REV | DATE | BY | CHK | APP | ISSUED FOR |
|-----|----------|----|-----|-----|--------------------|
| 3 | 12/12/15 | CE | JC | JIS | OPEN |
| 2 | 03/21/15 | CE | JC | JIS | SPECIAL USE PERMIT |
| 1 | 07/03/12 | CE | JC | JIS | SPECIAL USE PERMIT |
| 0 | 05/15/12 | SM | JC | JIS | SPECIAL USE PERMIT |

NOTICE
The data in this document incorporates proprietary rights of SIGMA ENERGY SOLUTIONS.
Any party accepting this document does so in confidence and agrees that it shall not be disclosed in whole or part, nor disclosed to others without the consent of SIGMA ENERGY SOLUTIONS.

| REVISION | DESCRIPTION |
|---------------|-----------------------------------|
| REVISION | FOR UPDATED EQUIPMENT ARRANGEMENT |
| REVISION | FOR TECHNICAL COMMENTS |
| INITIAL ISSUE | |

PROJECT ENGINEER
J. SASSO

ENGINEER
W. R. SCHLUMPF

| | |
|----------|----------|
| DATE | 04/26/12 |
| SCALE | AS NOTED |
| DRAWN | SH |
| CHECKED | WS |
| APPROVED | WRS |
| APPROVED | JIS |

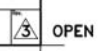
SIGMA ENERGY ENGINEERING P.C.

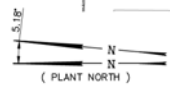
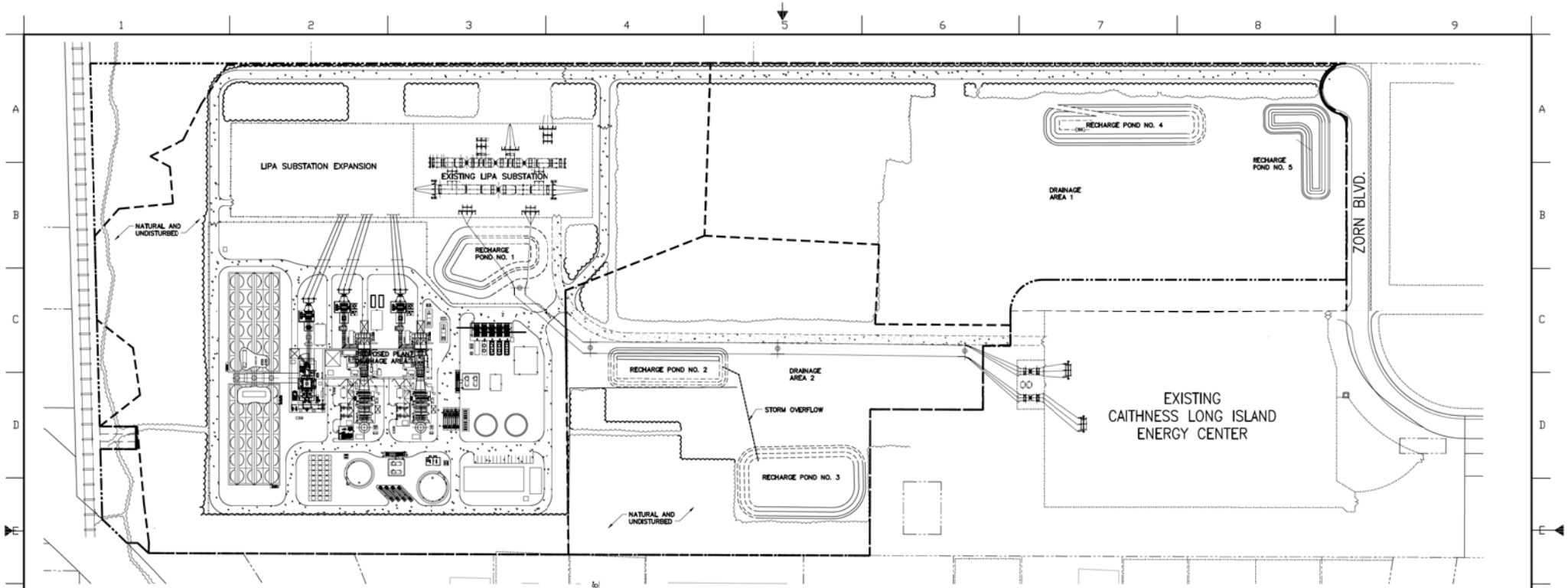
325 Sunrise Highway
West Islip, New York 11795

CAITHNESS LONG ISLAND II, LLC

PROPOSED PLANT: ONE 2x1
COMBINED CYCLE CONFIGURATION

FIGURE-001





CONCEPTUAL SITE PLAN
SCALE: 1"=120'

DRAINAGE CALCULATIONS

PROPOSED PLANT DRAINAGE AREA

| | |
|--------------------------|---------------------------------------|
| NATURAL/UNDISTURBED: | 726,461 SF x 0.1 x 8 /12 = 48,230 CF |
| PERVIOUS AREA (STONE): | 722,778 SF x 0.5 x 8 /12 = 240,927 CF |
| IMPERVIOUS AREA (ROADS): | 209,251 SF x 1.0 x 8 /12 = 139,500 CF |
| TOTAL REQUIRED | = 428,657 CF |
| RECHARGE POND NO. 1 | = 74,774 CF |
| RECHARGE POND NO. 2 | = 133,236 CF |
| RECHARGE POND NO. 3 | = 276,930 CF |
| TOTAL PROVIDED | 484,940 CF |

DRAINAGE AREA 1

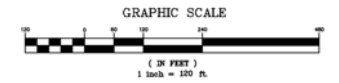
| | |
|--------------------------|---------------------------------------|
| NATURAL/UNDISTURBED: | 246,064 SF x 0.1 x 8 /12 = 16,404 CF |
| LAYDOWN AREA (STONE): | 435,856 SF x 0.5 x 8 /12 = 178,818 CF |
| DRIVEWAY AREA (ASPHALT): | 75,600 SF x 1.0 x 8 /12 = 50,400 CF |
| TOTAL REQUIRED | = 245,422 CF |
| RECHARGE POND NO. 4 | = 169,731 CF |
| RECHARGE POND NO. 5 | = 102,004 CF |
| TOTAL PROVIDED | 271,735 CF |

DRAINAGE AREA 2

| | |
|------------------------------------|--------------------------------------|
| NATURAL/UNDISTURBED: | 388,083 SF x 0.1 x 8 /12 = 25,872 CF |
| TRANSFER AREA AND PARKING (STONE): | 106,124 SF x 0.5 x 8 /12 = 65,174 CF |
| SWITCHYARD ROAD (ASPHALT): | 31,659 SF x 1.0 x 8 /12 = 21,106 CF |
| TOTAL REQUIRED | = 112,352 CF |
| RECHARGE POND NO. 2 | = 133,236 CF |
| RECHARGE POND NO. 3 | = 276,930 CF |
| TOTAL PROVIDED | 410,166 CF |

LEGEND:

- PROPERTY LINE
- EXISTING FENCE LINE
- PROPOSED FENCE LINE
- DRAINAGE DIVIDE LINE
- EXISTING TREE LINE
- PROPOSED TREE LINE



| |
|--|
| CONTRACTOR SHALL VERIFY ALL CONDITIONS ON JOB SITE & NOTIFY PROJECT ENGINEER OF ANY VARIATIONS FROM DIMENSIONS SHOWN ON THESE DRAWINGS BEFORE PROCEEDING WITH ANY CONSTRUCTION. |
| NOTICE The data in this document incorporates proprietary rights of SIGMA ENERGY SOLUTIONS. Any party accepting this document does so in confidence and agrees that it shall not be duplicated in whole or part, nor disclosed to others without the consent of SIGMA ENERGY SOLUTIONS. |
| PROJECT ENGINEER J. SASSO |
| ENGINEER W. R. SCHLUMPF |
| DATE 09/19/13 |
| SCALE AS NOTED |
| DRAWN CE |
| CHECKED WS |
| APPROVED WRS |
| APPROVED JS |

| | | | | | |
|-----|----------|----|-----|------|------------|
| REV | DATE | BY | CHK | APPR | ISSUED FOR |
| A | 11/07/13 | CE | JC | JS | DBS |

| | |
|---------------|----------------------|
| INITIAL ISSUE | REVISION DESCRIPTION |
|---------------|----------------------|

SIGMA ENERGY ENGINEERING P.C.

325 Sunrise Highway
West Islip, New York 11795

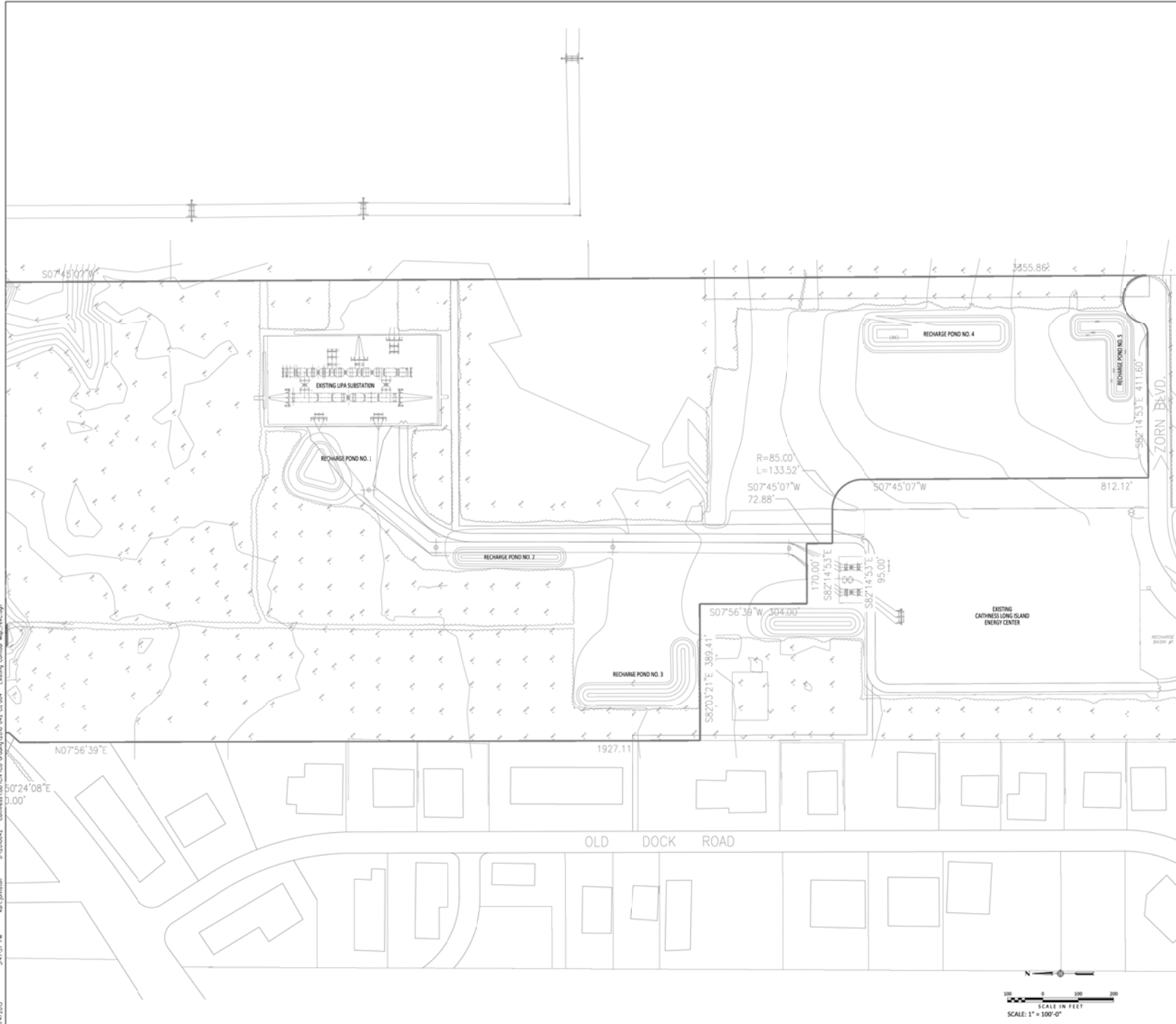
CAITHNESS LONG ISLAND II, LLC

PROPOSED PLANT DRAINAGE PLAN

FIGURE-002

NOTES:

1. SEE CE-002 FOR SEDIMENTATION & EROSION CONTROL PLAN.
2. SEE CG-002 FOR EXISTING CONDITIONS PLAN.
3. SEE CG-003 FOR OVERALL GRADING & DRAINAGE PLAN.



- PRELIMINARY -
NOT FOR CONSTRUCTION
CONFIDENTIAL

THESE DRAWINGS ARE CONFIDENTIAL IN NATURE, AND WITHOUT AUTHORIZED DISTRIBUTION TO THE GRANTEE OR ANY OTHER PARTY, SHALL BE A VIOLATION OF THE CONTRACT. THE GRANTEE SHALL NOT BE RESPONSIBLE FOR ANY ERRORS OR OMISSIONS IN THESE DRAWINGS. THE GRANTEE SHALL BE RESPONSIBLE FOR OBTAINING ALL NECESSARY PERMITS AND APPROVALS FROM ALL APPLICABLE AGENCIES. THE GRANTEE SHALL BE RESPONSIBLE FOR OBTAINING ALL NECESSARY PERMITS AND APPROVALS FROM ALL APPLICABLE AGENCIES. THE GRANTEE SHALL BE RESPONSIBLE FOR OBTAINING ALL NECESSARY PERMITS AND APPROVALS FROM ALL APPLICABLE AGENCIES.

| REVISED PER THE COMMENTS | | | | |
|--------------------------|-------------|-------------|-------------|----------|
| C | K. JOHNSTON | K. JOHNSTON | A. STUTZMAN | 11-04-13 |
| ADDRESSED THE COMMENTS | | | | |
| B | K. JOHNSTON | K. JOHNSTON | A. STUTZMAN | 11-01-13 |
| PRELIMINARY | | | | |
| A | K. JOHNSTON | K. JOHNSTON | A. STUTZMAN | 10-25-13 |
| REV | DESIGN BY | DRAWN BY | CHECKED BY | DATE |

CAITHNESS LONG ISLAND II, LLC

CAITHNESS LONG ISLAND ENERGY
CENTER II PROJECT
CE 2x1 7FA 05

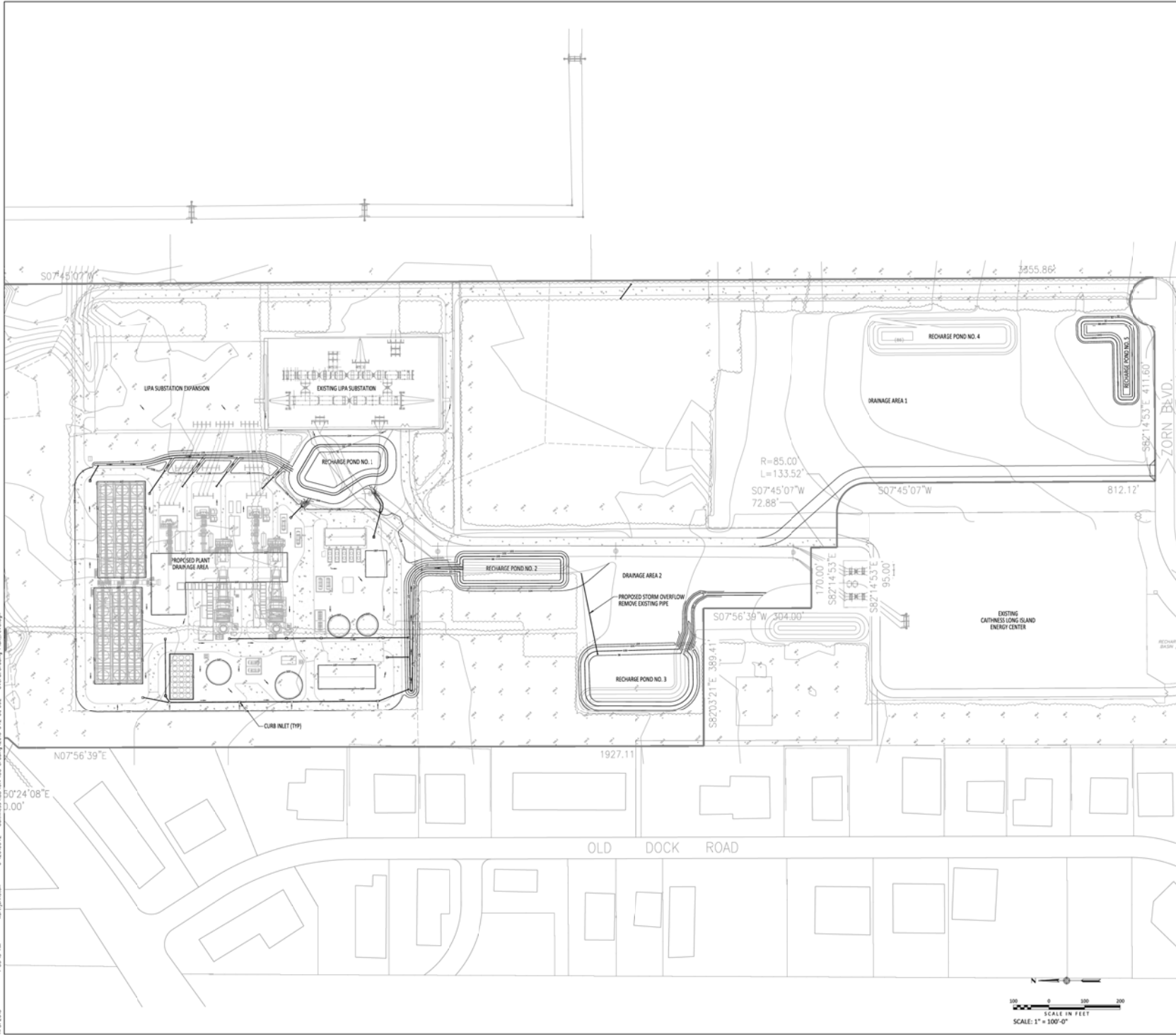


Kiewit Power
8401 Weaver Boulevard
Lynchburg, Virginia 24502

EXISTING CONDITIONS PLAN

| ENGINEER/DESIGN | DRAWING NUMBER |
|--|--------------------|
| ENGINEER/DESIGN LEAD ENG ENG MGR PROJ MGR | P010-042-CG-004-GE |

1/15/2015 2:55:13 AM kwl Johnston J:\201042 - Caithness LII\CG-002-Grading\2010-042-CG-002 - Overall Grading Plan.mxd.dgn



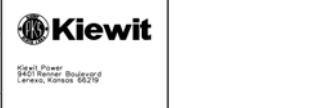
- NOTES:**
- SEE CG-002 FOR SEDIMENTATION & EROSION CONTROL PLAN.
 - SEE CG-003 FOR OVERALL GRADING & DRAINAGE PLAN.
 - SEE CG-004 FOR CONSTRUCTION GRADING & DRAINAGE PLAN.
 - TOP OF CONCRETE (TOC) IS EL 107.0.
TOP OF GRADE IS EL 106.5

- PRELIMINARY -
NOT FOR CONSTRUCTION
CONFIDENTIAL

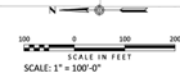
THESE DRAWINGS ARE CONFIDENTIAL IN NATURE, AND WITHOUT UNAUTHORIZED DISTRIBUTION OR THE GRADINGS CONTRACTOR SHALL BE IN VIOLATION OF THE CONTRACT. THE CONTRACTOR SHALL BE RESPONSIBLE FOR VERIFYING THE ACCURACY OF THE INFORMATION AND DATA PROVIDED HEREON. THE CONTRACTOR SHALL BE RESPONSIBLE FOR VERIFYING THE ACCURACY OF THE INFORMATION AND DATA PROVIDED HEREON. THE CONTRACTOR SHALL BE RESPONSIBLE FOR VERIFYING THE ACCURACY OF THE INFORMATION AND DATA PROVIDED HEREON.

| REV | DATE | BY | CHECKED BY | DESCRIPTION |
|-----|------|-------------|-------------|---|
| C | | K. JOHNSTON | A. STUTZMAN | REVISED PER THE COMMENTS |
| B | | K. JOHNSTON | A. STUTZMAN | REVISED PROPOSED GRADING AND ADDRESSED THE COMMENTS |
| A | | K. JOHNSTON | A. STUTZMAN | PRELIMINARY |
| REV | | K. JOHNSTON | A. STUTZMAN | DESIGN BY / DRAWN BY / CHECKED BY / DATE |

CAITHNESS LONG ISLAND II, LLC
CAITHNESS LONG ISLAND ENERGY
CENTER II PROJECT
CG 2x1 7FA 05

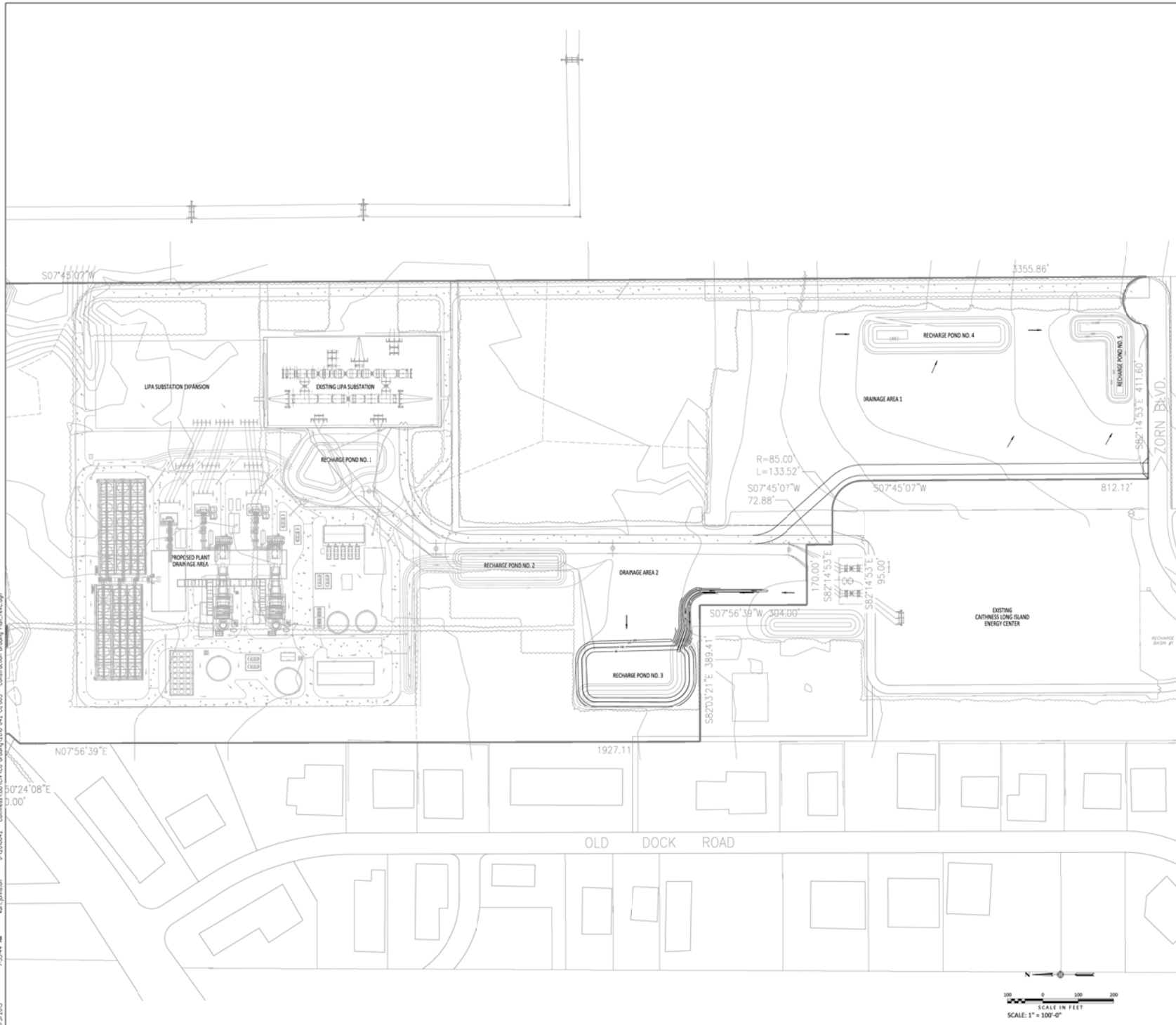


| OVERALL GRADING AND DRAINAGE PLAN | | DRAWING NUMBER |
|-----------------------------------|-------------|--------------------|
| ENGINEER/DESIGN | J. ALBERS | P010-042-CG-002-GE |
| LEAD ENG | A. STUTZMAN | |
| ENG MGR | J. ALBERS | |
| PROJ MGR | M. SHANKS | |



NOTES:

1. SEE CE-002 FOR SEDIMENTATION & EROSION CONTROL PLAN.
2. SEE CG-002 FOR EXISTING CONDITIONS PLAN.
3. SEE CG-004 FOR CONSTRUCTION GRADING & DRAINAGE PLAN.



- PRELIMINARY -
NOT FOR CONSTRUCTION
CONFIDENTIAL

THESE DRAWINGS ARE CONFIDENTIAL IN NATURE, AND WITHOUT AUTHORIZED DISTRIBUTION OR THE GRANTEE'S EXPRESS WRITTEN PERMISSION, NO REPRODUCTION OR TRANSMISSION OF ANY KIND SHALL BE MADE. THE GRANTEE SHALL BE RESPONSIBLE FOR THE PROTECTION OF THIS INFORMATION AND SHALL NOT BE HELD RESPONSIBLE FOR ANY UNAUTHORIZED DISCLOSURE OR REPRODUCTION THEREOF. THE GRANTEE SHALL BE RESPONSIBLE FOR THE PROTECTION OF THIS INFORMATION AND SHALL NOT BE HELD RESPONSIBLE FOR ANY UNAUTHORIZED DISCLOSURE OR REPRODUCTION THEREOF.

| REVISED PER THE COMMENTS | | | | |
|--------------------------|------------------------|-------------|-------------|----------|
| C | K. JOHNSTON | K. JOHNSTON | A. STUTZMAN | 11-04-13 |
| B | ADDRESSED THE COMMENTS | | | |
| A | K. JOHNSTON | K. JOHNSTON | A. STUTZMAN | 11-01-13 |
| PRELIMINARY | | | | |
| REV | K. JOHNSTON | K. JOHNSTON | A. STUTZMAN | 10-25-13 |
| | DESIGN BY | DRAWN BY | CHECKED BY | DATE |

CAITHNESS LONG ISLAND II, LLC

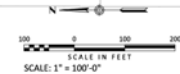
CAITHNESS LONG ISLAND ENERGY
CENTER II PROJECT
GE 2x1 7FA 05



Kiewit Power
8401 Weaver Boulevard
Lynchburg, Virginia 24502

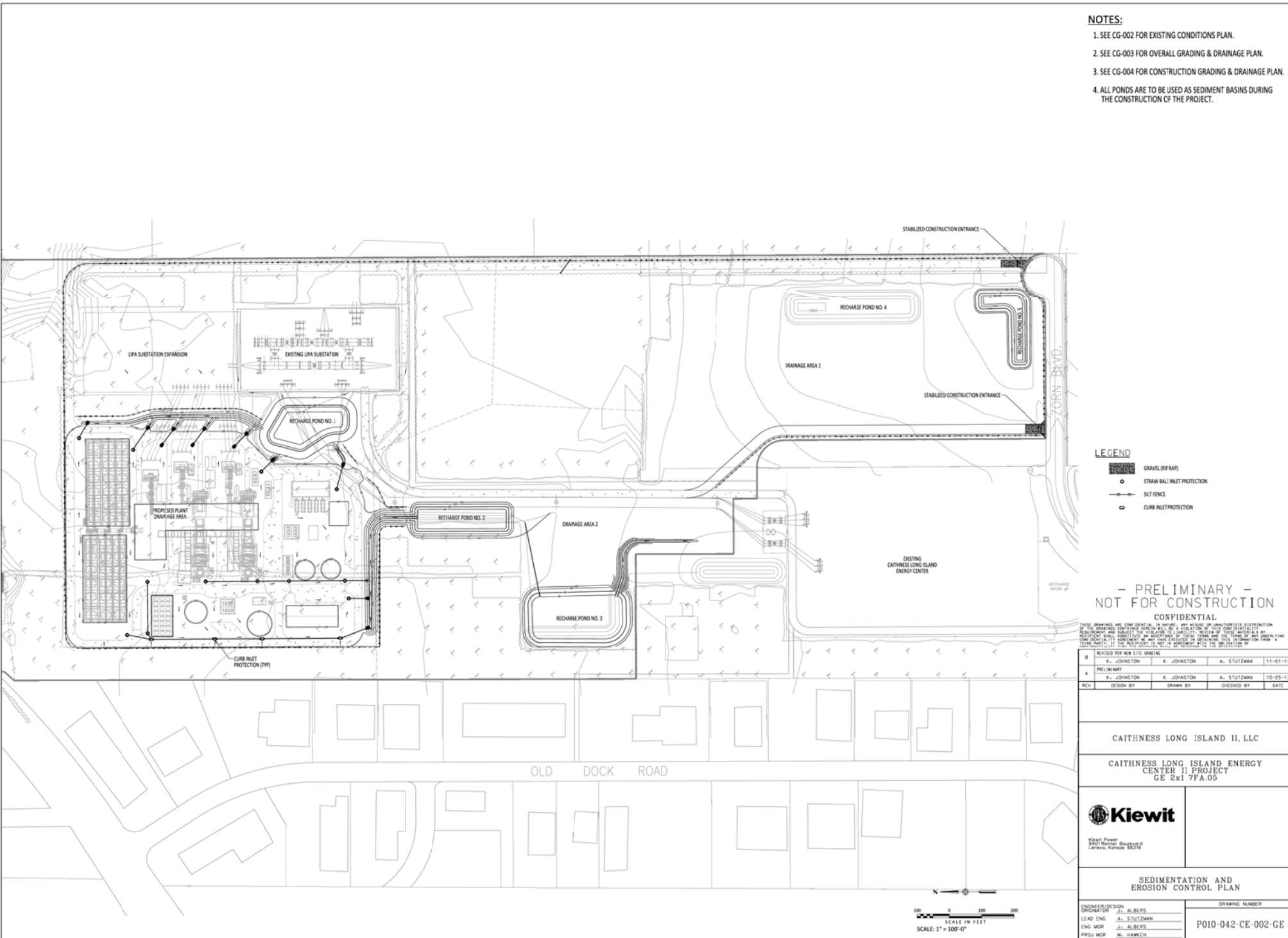
CONSTRUCTION GRADING
AND DRAINAGE PLAN

| | | | |
|-------------------------------|-------------|----------------|--------------------|
| ENGINEER/DESIGN ORIGINATOR | J. ALBERS | DRAWING NUMBER | P010-042-CG-003-GE |
| LEAD ENG | A. STUTZMAN | | |
| ENG MGR | J. ALBERS | | |
| PROJ MGR | M. SHAWLEN | | |



11/2/2013 7:55:44 AM kwl.johnston J:\201042 - Caithness Long Island II - CG-003 - Construction Grading Plan - revC.dwg

1/18/2015 9:52:37 AM kwr johnston J:\2010042 - Calhoun\181\042\CE Erosion Control\181\042-CE-002 - Erosion Control\181\042-CE-002.dwg



- NOTES:**
1. SEE CG-002 FOR EXISTING CONDITIONS PLAN.
 2. SEE CG-003 FOR OVERALL GRADING & DRAINAGE PLAN.
 3. SEE CG-004 FOR CONSTRUCTION GRADING & DRAINAGE PLAN.
 4. ALL PONDS ARE TO BE USED AS SEDIMENT BASINS DURING THE CONSTRUCTION OF THE PROJECT.

- LEGEND**
- GRAVEL (RIP RAP)
 - STRAIN BALL INLET PROTECTION
 - SILT FENCE
 - CURB INLET PROTECTION

- PRELIMINARY -
NOT FOR CONSTRUCTION
CONFIDENTIAL

THESE DRAWINGS ARE CONFIDENTIAL IN NATURE AND SUBJECT TO UNAUTHORIZED DISTRIBUTION. ANY REPRODUCTION OR DISSEMINATION OF THESE DRAWINGS WITHOUT THE WRITTEN PERMISSION OF CAITHNESS LONG ISLAND ENERGY CENTER IS STRICTLY PROHIBITED. THE INFORMATION PROVIDED HEREIN IS FOR INFORMATION ONLY AND DOES NOT CONSTITUTE AN OFFER OF ANY FINANCIAL PRODUCT OR SERVICE. THE INFORMATION IS NOT INTENDED TO BE USED AS A BASIS FOR ANY INVESTMENT DECISION. THE INFORMATION IS NOT INTENDED TO BE USED AS A BASIS FOR ANY INVESTMENT DECISION.

| REVISED PER NEW SITE GRADING | | | | |
|------------------------------|------------|------------|-------------|----------|
| B | K. JOHNSON | K. JOHNSON | A. STUTZMAN | 11-01-13 |
| PRELIMINARY | | | | |
| A | K. JOHNSON | K. JOHNSON | A. STUTZMAN | 10-25-13 |
| REV | DESIGN BY | DRAWN BY | CHECKED BY | DATE |

CAITHNESS LONG ISLAND II, LLC

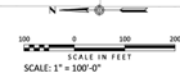
CAITHNESS LONG ISLAND ENERGY
CENTER II PROJECT
CE 2x1 7FA 05

Kiewit

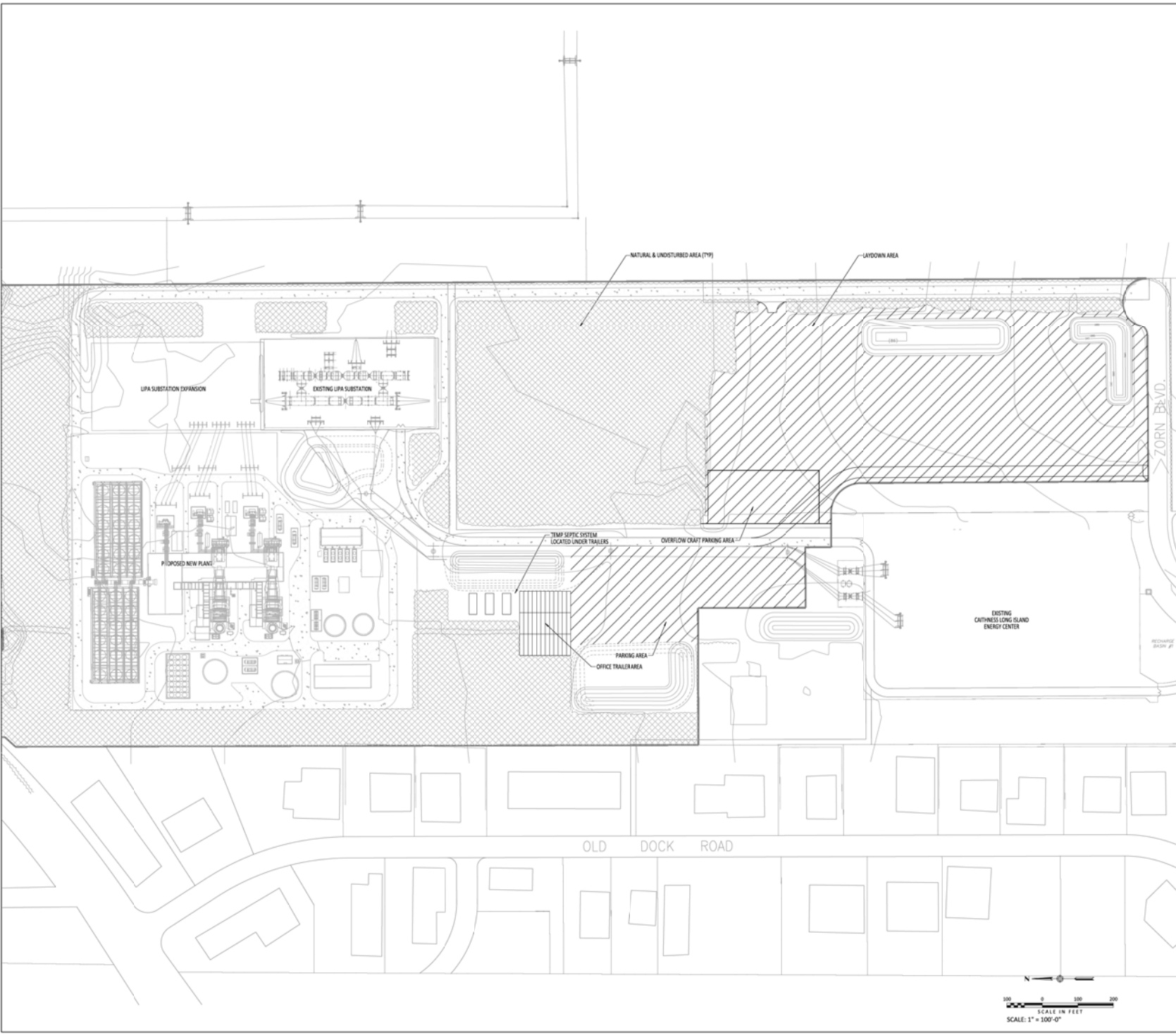
Kiewit Power
8401 Weaver Boulevard
Lawrence, Kansas 66044

**SEDIMENTATION AND
EROSION CONTROL PLAN**

| | |
|--|--------------------------------------|
| ENGINEER/DESIGN ORIGINATOR J. ALBERS | DRAWING NUMBER PO10-042-CE-002-GE |
| LEAD ENG A. STUTZMAN | |
| ENG MGR J. ALBERS | |
| PROJ MGR M. SHAWLER | |



11/2/2013 7:58:24 AM kwl.johnston J:\2010042 - Calhoun\181\CG-005-042-CC-005 - Site Laydown Plan.rvt.dwg



- NOTES:**
- PRELIMINARY LAYDOWN QUANTITIES:
 LAYDOWN AREA ON SITE = 13.7 ACRES
 PARKING AREA = 180,000 S.F.
 OFFICE TRAILER AREA = 41,700 S.F.
 - SEE CG-002 FOR EXISTING CONDITIONS PLAN.
 - SEE CG-003 FOR OVERALL GRADING & DRAINAGE PLAN.



- PRELIMINARY -
NOT FOR CONSTRUCTION
CONFIDENTIAL

THESE DRAWINGS ARE CONFIDENTIAL IN NATURE AND SUBJECT TO UNAUTHORIZED DISTRIBUTION. ANY REPRODUCTION OR DISSEMINATION OF THESE DRAWINGS BY ANY PARTY WITHOUT THE WRITTEN PERMISSION OF KIEWIT POWER SHALL BE PROHIBITED. THE INFORMATION PROVIDED HEREIN IS FOR INFORMATION ONLY AND DOES NOT CONSTITUTE AN OFFER OF FINANCIAL PRODUCTS OR SERVICES. THE INFORMATION PROVIDED HEREIN IS NOT INTENDED TO BE USED AS A BASIS FOR INVESTMENT OR OTHER FINANCIAL DECISIONS. THE INFORMATION PROVIDED HEREIN IS NOT INTENDED TO BE USED AS A BASIS FOR INVESTMENT OR OTHER FINANCIAL DECISIONS.

| REV | REVISION | DESIGN BY | DRAWN BY | CHECKED BY | DATE |
|-----|--------------------------|------------|------------|-------------|----------|
| B | REVISED PER THE COMMENTS | K. JOHNSON | K. JOHNSON | A. STUTZMAN | 11-04-13 |
| A | PRELIMINARY | K. JOHNSON | K. JOHNSON | A. STUTZMAN | 11-01-13 |

CAITHNESS LONG ISLAND II, LLC

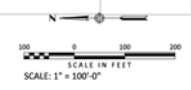
CAITHNESS LONG ISLAND ENERGY
CENTER II PROJECT
GE 2x1 7FA.05

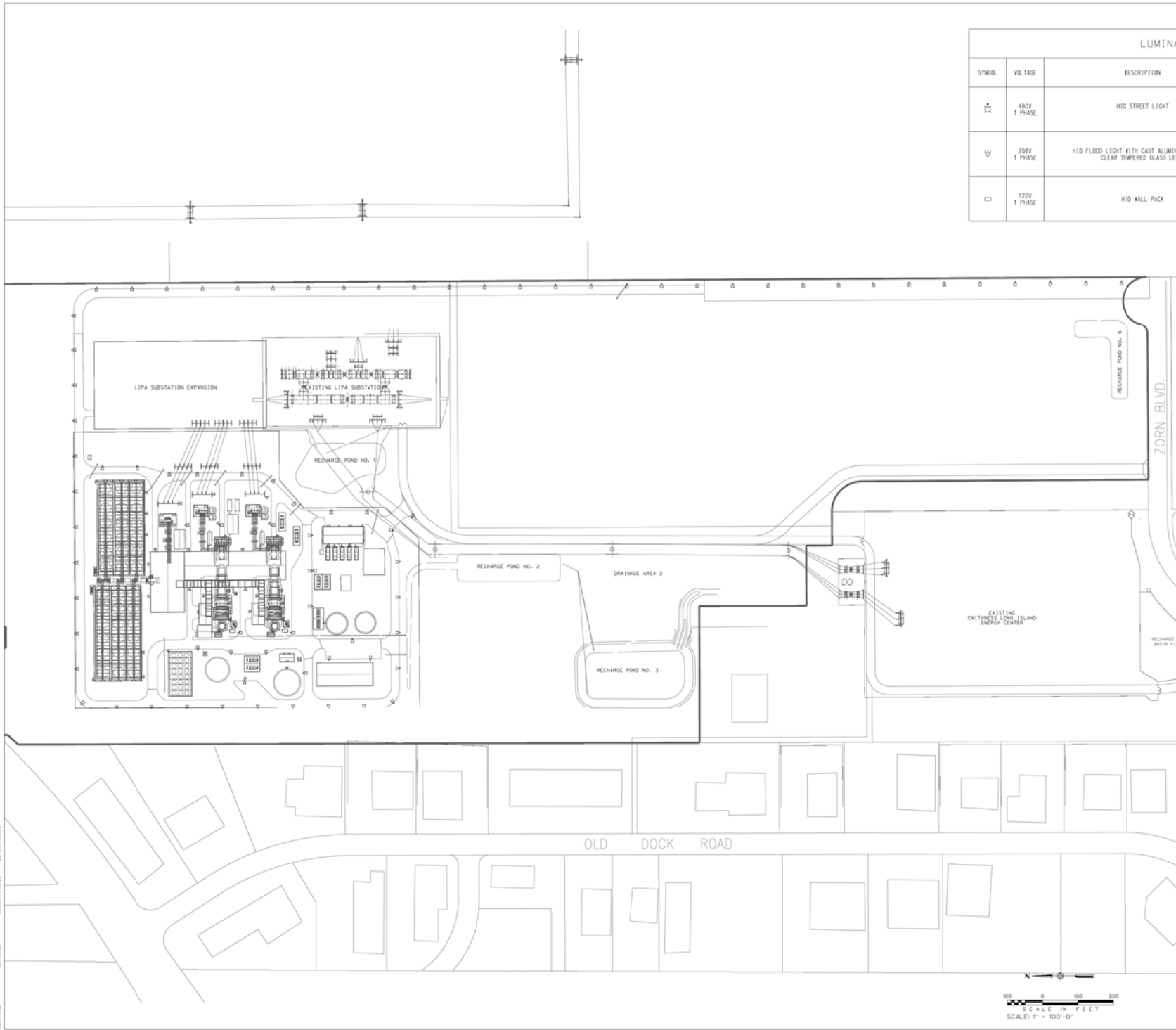


SITE LAYDOWN PLAN

ENGINEER/DESIGN: J. ALBERS
 LEAD ENG: A. STUTZMAN
 ENG MGR: J. ALBERS
 PROJ MGR: M. SHAWLEN

DRAWING NUMBER
P010-042-CG-005-GE





| LUMINAIRE SCHEDULE | | | |
|--------------------|-----------------|---|--|
| SYMBOL | VOLTAGE | DESCRIPTION | REMARKS |
| ⊙ | 480V 1 PHASE | HIC STREET LIGHT | MOUNTED ON A 20" POLE FULL CUT OFF DISTRIBUTION |
| ⊙ | 208V 1 PHASE | HID FLOOD LIGHT WITH CAST ALUMINUM HOUSING, CLEAR TEMPERED GLASS LENS. | OUTDOOR YARD LIGHTING MOUNTED WITH BRACKETS ON STRUCTURES SHIELDED AS REQUIRED |
| □ | 120V 1 PHASE | HID WALL PACK | OUTDOOR YARD LIGHTING MOUNTED ON STRUCTURES SHIELDED AS REQUIRED |

- NOTES:**
- EQUIPMENT LIGHTING NOT SHOWN BUT SHALL BE DESIGNED AS REQUIRED TO MEET SAFETY AND CODE REQUIREMENTS.
 - THE LIGHTING DEPICTED ON THIS PLAN IS CONCEPTUAL IN NATURE.

- PRELIMINARY -
NOT FOR CONSTRUCTION

CONFIDENTIAL

THESE DRAWINGS ARE CONFIDENTIAL TO KIEWIT AND KIEWIT OR CONTRACTOR'S DISTRIBUTION OF THE DRAWINGS CONTAINED HEREIN WILL BE A VIOLATION OF KIEWIT'S CONFIDENTIALITY REQUIREMENTS AND SUBJECT TO A LEGAL ACTION. KIEWIT'S CONFIDENTIALITY AGREEMENT WITH THE CLIENT SHALL BE APPLIED TO ALL INFORMATION FROM A THIRD PARTY, IF THE INFORMATION IS NOT IN AGREEMENT WITH THE CONFIDENTIALITY OF THE DRAWINGS, IT SHALL BE RETURNED TO THE ORIGINATOR.

| | | | | | |
|-----|-------------|------------|------------|------------|----------|
| A | PRELIMINARY | S. KENNEDY | S. KENNEDY | J. ALBERS | 03-12-14 |
| REV | DESIGN BY | DESIGN BY | DRAWN BY | CHECKED BY | DATE |

CAITHNESS LONG ISLAND II, LLC

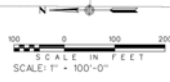
CAITHNESS LONG ISLAND ENERGY
CENTER II PROJECT
CD 2X1 7FA 05

Kiewit

Kiewit Power
2401 Weaver Boulevard
Levittown, PA 19057

**PRELIMINARY ELECTRICAL
SITE LIGHTING PLAN**

| | | | |
|-----------------|-------------|----------------|--------------------|
| ENGINEER/DESIGN | S. KENNEDY | DRAWING NUMBER | PO10-042-EL-001-GE |
| LEAD ENG | A. STUTZMAN | | |
| ENG MGR | J. ALBERS | | |
| PROJ MGR | M. HANSEN | | |

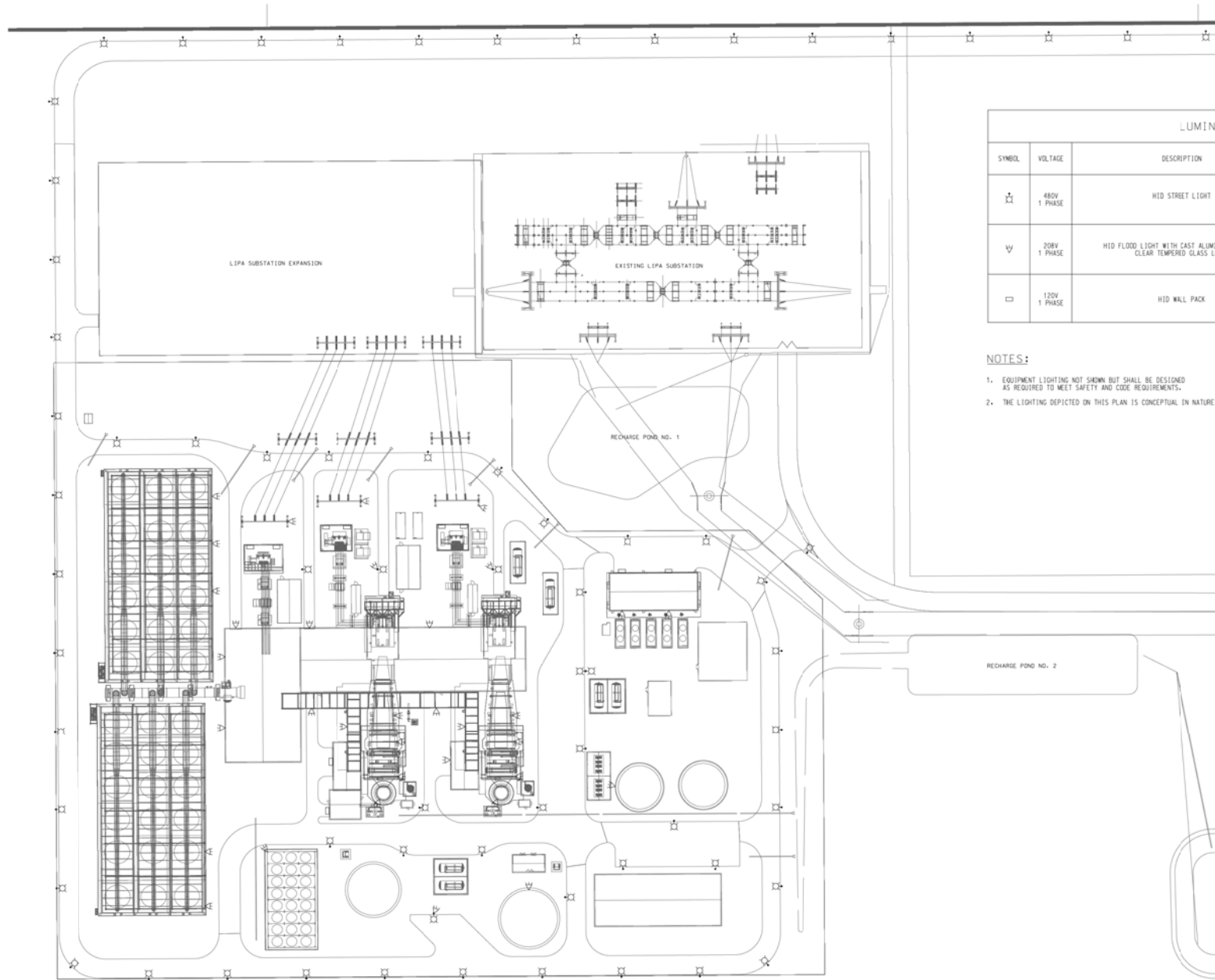


REVISIONS

REVISED

REVISIONS

REVISIONS



| LUMINAIRE SCHEDULE | | | |
|--------------------|-----------------|---|--|
| SYMBOL | VOLTAGE | DESCRIPTION | REMARKS |
| ⊗ | 480V 1 PHASE | HID STREET LIGHT | MOUNTED ON A 20' POLE FULL CUT OFF DISTRIBUTION |
| ∇ | 208V 1 PHASE | HID FLOOD LIGHT WITH CAST ALUMINUM HOUSING, CLEAR TEMPERED GLASS LENS. | OUTDOOR YARD LIGHTING MOUNTED WITH BRACKETS ON STRUCTURES SHIELDED AS REQUIRED |
| □ | 120V 1 PHASE | HID WALL PACK | OUTDOOR YARD LIGHTING MOUNTED ON STRUCTURES CUT-OFF AS REQUIRED |

NOTES:

- EQUIPMENT LIGHTING NOT SHOWN BUT SHALL BE DESIGNED AS REQUIRED TO MEET SAFETY AND CODE REQUIREMENTS.
- THE LIGHTING DEPICTED ON THIS PLAN IS CONCEPTUAL IN NATURE.

- PRELIMINARY -
NOT FOR CONSTRUCTION
CONFIDENTIAL

THESE DRAWINGS ARE CONFIDENTIAL IN NATURE, AND METHOD OF UNAUTHORIZED DISTRIBUTION BY THE GRANTEE, CONTRACTOR, OR ANY OTHER PARTY, IS PROHIBITED. THE GRANTEE SHALL BE RESPONSIBLE FOR PROTECTING THE CONFIDENTIALITY OF THE INFORMATION CONTAINED HEREIN. THE GRANTEE SHALL NOT BE HELD RESPONSIBLE FOR ANY LOSS OR DAMAGE TO THE GRANTEE OR ANY OTHER PARTY, IF THE GRANTEE DOES NOT AGREE TO THE GRANTEE'S CONFIDENTIALITY. IF THE GRANTEE DOES NOT AGREE TO THE GRANTEE'S CONFIDENTIALITY, THEN THE GRANTEE SHALL BE RETURNED TO THE GRANTEE.

| | | | | |
|-----|------------|------------|------------|----------|
| A | S. KENNEDY | S. KENNEDY | J. ALBERS | 03-12-14 |
| REV | DESIGN BY | DRAWN BY | CHECKED BY | DATE |

CAITHNESS LONG ISLAND II, LLC

CAITHNESS LONG ISLAND ENERGY
CENTER II PROJECT
C/L 2X1 7FA.05



Kiewit Power
2401 Walnut Street
Lynchburg, Virginia 24502

PRELIMINARY ELECTRICAL
SITE LIGHTING PLAN

| | | |
|-----------------|-------------|--------------------|
| ENGINEER/DESIGN | S. KENNEDY | DRAWING NUMBER |
| LEAD ENG | A. STUTZMAN | PO10-042-EL-002-GE |
| ENG MGR | J. ALBERS | |
| PROJ MGR | M. HANLEY | |

