

SCHÜTZ

news

PACKAGING SYSTEMS

NEW HIGH-TECH RECO CENTRE IN SELTERS

8

Setting new standards in the circular economy.

ENERGY SYSTEMS

- 16 **New Klett systems
for all applications**

COMPOSITES

- 24 **High-tech model making:
the mould for the deck of
Team Malizia's new yacht**

COMPANY

- 40 **Perfect prospects for candidates:
A wide choice of career opportunities
in a future-safe sector**

PACKAGING SYSTEMS

GREEN LAYER IBC and
PE drums by SCHÜTZ:
**Quality and safety with
a high recyclate content**

4



Contents

PACKAGING SYSTEMS

- 4 GREEN LAYER IBC and PE drums by SCHÜTZ: **Quality and safety with a high recycle content**
- 8 Setting new standards in the circular economy: **The state-of-the-art reconditioning centre in Selters**

ENERGY SYSTEMS

- 16 **New Klett systems for all applications**

COMPOSITES

- 20 **JEC World in Paris: SCHÜTZ COMPOSITES** presented the wide range of applications for the company's high-tech materials
- 24 Model making at the most advanced technical level: **The mould for the deck of Team Malizia's yacht**

COMPANY

- 26 Over three decades of constant growth: **The success story of SCHÜTZ CONTAINER SYSTEMS in North America**
- 34 United by shared values and goals – **SCHÜTZ enters into a partnership with Boris Herrmann**
- 40 **Perfect prospects for candidates:** A wide choice of career opportunities in a future-safe sector

8

Ensuring the highest performance, quality and safety in the reconditioning process.



16

Minimum installation heights or special fire protection and impact sound specifications: our new Klett system series meets all requirements.



20

In Paris, SCHÜTZ COMPOSITES presented modern composite materials for high-tech and energy-efficient applications.



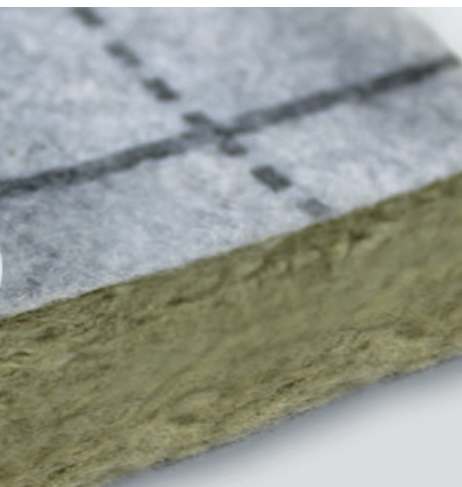


34

SCHÜTZ is the Official Technical Partner and Official Supplier of Boris Herrmann and his Team Malizia.



© Andreas Lindlahr



26

Over three decades of constant growth: the success story of SCHÜTZ CONTAINER SYSTEMS in North America



IMPRINT

Editor: Schütz GmbH & Co. KGaA
Schützstraße 12, D-56242 Selters
Phone: +49 2626 77 0, E-mail: info1@schuetz.net
www.schuetz.net

Editorial office: Schütz Corporate Marketing (Veit Enders, Melanie Ievolo)

Text: additiv pr GmbH & Co. KG (Nils Heinen), www.additiv-pr.de
Sage & Schreibe Public Relations GmbH
(Christoph Jutz, Stephan Hanken), www.sage-schreibe.de

Design: Bauch & Müller Werbeagentur GmbH, www.bauch-mueller.de

Print: Druckerei Corzilius e.K., www.corzilius-mediencenter.de

Picture copyright: www.shutterstock.com, Andreas Lindlahr, Vincent Curutchet (Alea)

GREEN LAYER IBC and PE drums by SCHÜTZ:

Quality and safety with a high recyclate content

With the European Green Deal and the Action Plan for the Circular Economy, the European Union has defined the future framework conditions for the packaging industry. Cutting back on CO₂ is becoming more important. One central measure is the use of plastic recyclate in packaging. SCHÜTZ is one of the pioneers in this field. By using state-of-the-art, multi-layer extrusion and continually developing our recycling processes we are constantly increasing the proportion of recyclate used in our packaging. Another measure that underscores this strategy is the launch of our GREEN LAYER product range in Europe.

**6.8 kg
additional
CO₂ saving
per IBC**

The GREEN LAYER series is the latest development in SCHÜTZ's Green Lifecycle Management. With this programme, we are supporting our customers in meeting their sustainability

goals and further reducing the overall CO₂ footprint of their packaging. The aim is to ensure the broadest possible and most cost-effective supply of eco-friendly packaging. Ultimately, sourcing the volume



SCHÜTZ GREEN LAYER

Up to **3.8 kg**
additional CO₂
saving per drum



of recyclate required for this is a task for all partners along the supply chain. Only if users return emptied packaging to SCHÜTZ will the manufacturer have sufficient quantities available for plastic

recovery and be able to supply customers with new recycled packaging. We created the necessary infrastructure for this many years ago: with the SCHÜTZ TICKET SERVICE, the company collects emptied industrial packaging worldwide and reconditions it according to the highest environmental and safety standards.

Further development of production technology and material recycling

SCHÜTZ has always focused on achieving maximum environmental friendliness in the entire life cycle of its packaging. We achieve this with smart product design, advanced production processes, durable product quality and closed material cycles. We continuously invest in state-of-the-art production technology as well as in research and development. For example, we have consistently reduced the weight of our packaging in recent years and have refined the material recycling processes so that even heavily contaminated material can now be reconditioned with the help of special process technology and expertise. We are now in a position to recycle HDPE in different grades depending on the desired application; the recycled HDPE is used to produce packaging and components.

With our GREEN LAYER product range we are continuing to advance the circular economy in the field of industrial packaging. As a leading manufacturer, SCHÜTZ uses 3- or 6-layer extrusion blow moulding lines in its factories across Europe. This allows us to use 30 per cent high-quality, natural-coloured recycled material to produce inner bottles. What makes this process special is that the recyclate is used exclusively to make the middle layer of the inner bottle. We continue to use new HDPE to make the inner and outer layers, meaning that the filling product and environment only come into direct contact with virgin material. This design means

With our GREEN LAYER product range we are continuing to advance the circular economy in the field of industrial packaging.

Proportion of
recyclate in plastic:

68%



that users save virgin plastic as well as CO₂ and at the same time make an important contribution to achieving the goals of the European Green Deal.

The quality of the GREEN LAYER packaging is identical to our other product ranges. Whether IBC or plastic drums – GREEN LAYER products are ideally suited as eco-friendly packaging for numerous applications. With this product range, customers benefit from a high content of recycled material, low weight and maximum safety. The majority of the containers, and especially SCHÜTZ plastic drums, have UN approvals. The new GREEN LAYER series will initially be launched in the European markets. After a successful start, we will gradually roll out this environmentally friendly packaging in other regions.

Virgin material
High quality
SCHÜTZ
recyclate
Virgin material

Proportion of
recyclate in the
drum body:
30 %

Proportion of
recyclate in plastic:
57 %








Setting new standards
in the circular economy:

The state-of-the-art reconditioning centre in Selters



Maximum efficiency through the most advanced technology is what SCHÜTZ stands for, not just in production, but also in the conditioning of packaging. Now, at our headquarters in Selters, we have implemented a revolutionary overall concept. Using high-tech equipment, we are raising performance, quality and safety to a completely new level along the entire conditioning process.



While ordinary operations continued at the plant, one of the largest technology investments in SCHÜTZ's history has been rolled out over the last two years. In this programme, the entire reconditioning process was analysed from top to bottom, and newly implemented with an optimised layout in several newbuild halls. Based on our decades of experience and harnessing the possibilities of the most advanced plant technology, all process steps now interlock perfectly in the huge new complex. The new Reco Centre ideally reflects our integrated overall concept for

the resource-saving packaging cycle. All the procedures, processes and equipment used in it comply with the strictest international environmental and safety requirements.

Fully automated collection

An important starting point and the defining feature of the highly digitalised level of the entire reconditioning process is the fully automatic collection. After collection by the SCHÜTZ TICKET SERVICE, the emptied IBCs are unloaded from the truck onto conveyor belts, automatically separated and then tagged with a



The first step is optical IBC identification (OII), which is performed with state-of-the-art scanner units. An intelligent and self-learning software records all the packaging's condition and type parameters and independently evaluates the filling product label and label plates.

After collection by the SCHÜTZ TICKET SERVICE, the emptied IBCs are loaded from the truck onto conveyor belts, automatically separated and then tagged with a unique electronic identifier to allow the down-stream packaging route to be individually planned, controlled and tracked.

unique electronic identifier so that the further packaging route can be individually planned, controlled and tracked. All data generated in the reconditioning process is stored and transmitted to the central SAP system. For maximum transparency and security, all work steps up to the final inspection of the finished reconditioned IBCs are fully documented.

The first step is optical IBC identification (OII), which is performed with state-of-the-art scanner units. An intelligent and self-learning software records all the packaging's condition and type parameters and independently evaluates the filling product label and label plates.

In this process step, the product and manufacturer are checked against a product database containing more than 200,000 safety data sheets in different languages. If an IBC contains an unknown product, it is removed for further clarification. If the IBC meets the reconditioning requirements, it continues its reconditioning journey. All specific reconditioning procedures are determined on the basis of the evaluation of the contents and the condition of the container.



After repair and cleaning, the steel grids and steel and plastic pallets are ready for a new packaging cycle.

Multitrack reconditioning and repair

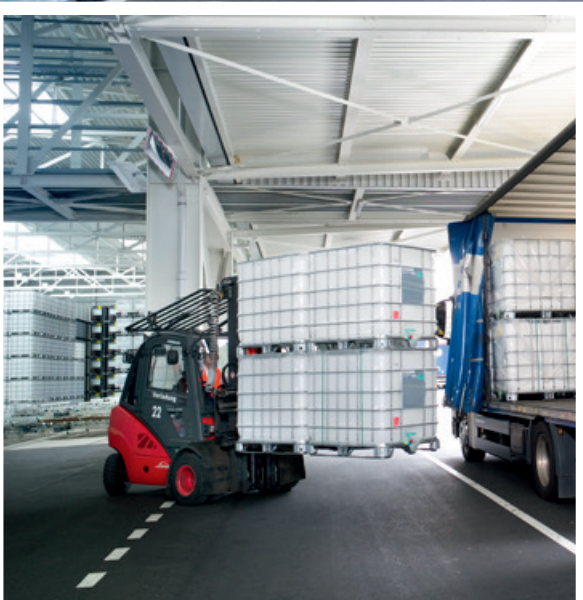
To optimise production, the IBC is graded by container type and condition and transferred to one of the integrated reconditioning lines. First, the inner bottle with the screw cap and outlet valve are removed from the steel grid. Any minor damage to the grid or pallet is repaired directly at the upstream repair stations. Components that are too badly damaged are replaced with new original parts. After repair and cleaning, the steel grids and steel and plastic pallets are ready for a new packaging cycle.

This involves fitting the cleaned and reconditioned steel grids with brand-new inner bottles. The replacement bottles are produced directly in the new reconditioning centre using two state-of-the-art 3-layer multilayer extrusion blow moulding lines. After passing the final quality and leak-tightness tests and being fitted with new label plates, the IBCs are ready for a new life cycle as RECOBULKs or RECONTAINERs.

Separate material processing in the state-of-the-art recycling centre

The fully automatic IBC collection system also opens up new possibilities for us in targeted material recycling, as the system precisely records the container properties and the previous filling product. In the newly built, directly adjacent recycling centre, we can select and separately process the shredded plastic material to obtain pre-defined final qualities. By applying specially coordinated process steps in several refining stages, we obtain the optimum recycling result for the respective application. For example, an advanced process allows us to largely eliminate odours from the recycled material. The resulting recyclate, which is highly pure, homogeneous and colour-sorted, can be used in the middle layer of our eco-friendly GREEN LAYER IBCs and drums.





In line with the high service and quality standards, the finished reconditioned IBCs are stored exclusively under cover in the directly adjacent loading and logistics centre until they start their journey to the customer.

Adjacent loading and logistics centre

In line with the high service and quality standards, the finished reconditioned IBCs are stored exclusively under cover in the directly adjacent loading and logistics centre until they start their journey to the customer. This area has also been completely redesigned and optimised as part of the project. The new infrastructure allows us to achieve maximum perfor-

mance: SCHÜTZ now offers a full solution for the closed packaging cycle, combining maximum product safety, cost savings and resource conservation, which the new reconditioning centre in Selters takes to an even higher level.



Reconditioning to the highest quality standard



All packaging in our ECOBULK range is specifically designed for best recyclability. We clean and repair the steel grids and the high-quality steel and plastic pallets, meaning they can be used for multiple packaging cycles. By reusing these components, each cycle saves over 100 kg of CO₂ emissions compared with the production of a new container. We fit all reconditioned containers with brand-new, tested inner bottles. We recondition the SCHÜTZ

IBCs we collect in a globally standardised process using only original components to produce RECOBULKS, which fully correspond to new SCHÜTZ IBCs in terms of quality and safety and have the same standard specifications. Recyclable steel grids from third-party manufacturers are fitted with a specially developed, fit-optimised inner bottle and a new universal label plate to produce SCHÜTZ RECONTAINERs.

FAIRS



27 – 29 SEPTEMBER 2022
NUREMBERG
HALL 6 | BOOTH 6-237



4 – 7 OCTOBER 2022
SVENSKA MÄSSAN
GOTHENBURG
HALL C | BOOTH C02:44

NEW KLETT SYSTEMS FOR ALL APPLICA- TIONS



The new Fiberklett system panels with organic mineral insulation are non-flammable and offer very high impact sound insulation.

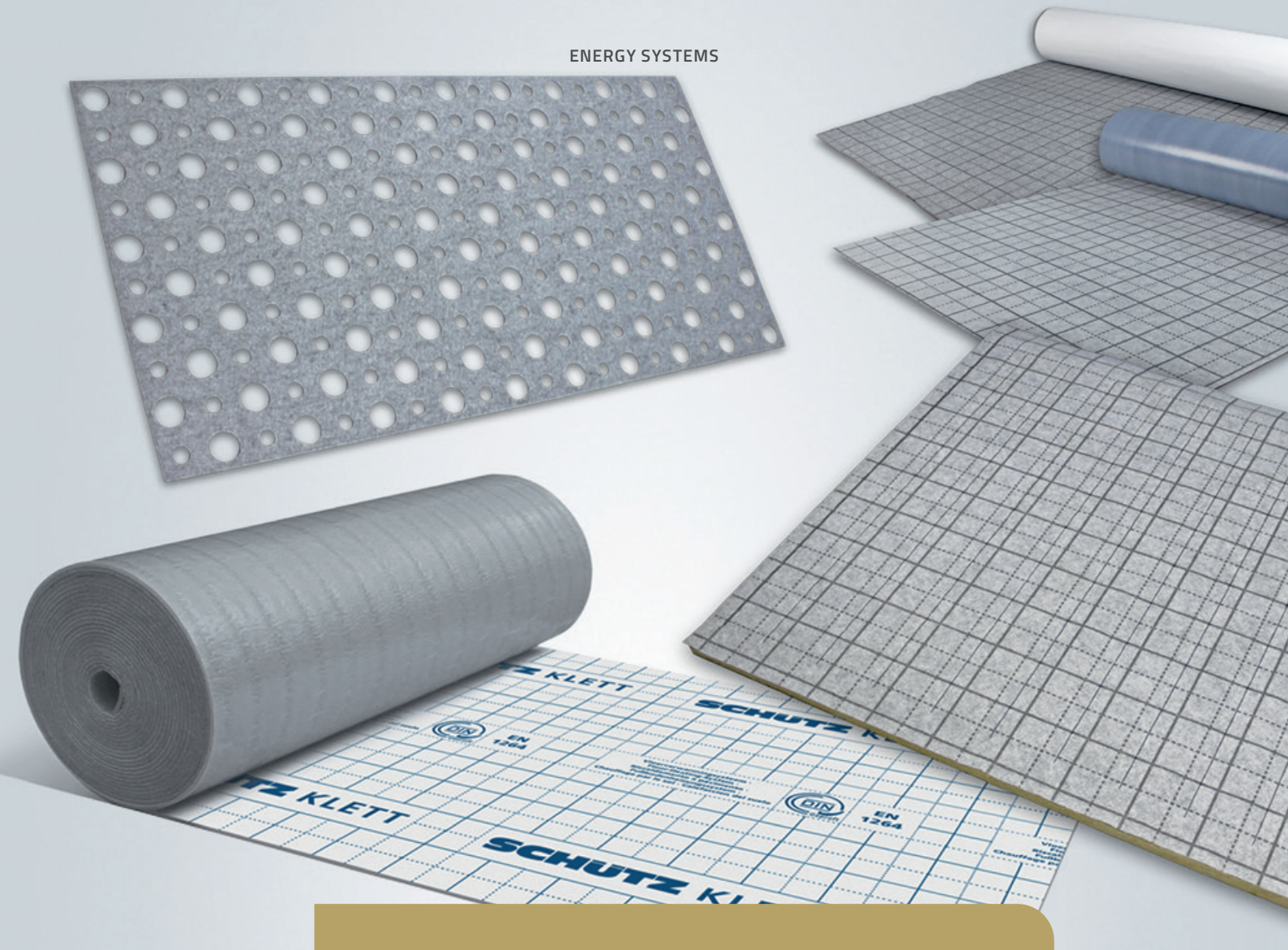
We have expanded our range of Klett systems:

Now includes new hook and loop fleece variants and a new Fiberklett system panel with organic mineral insulation. The SCHÜTZ Klett systems meet all requirements for the installation of underfloor heating in new buildings and renovations. Our products allow the realisation of construction projects with minimum installation heights and provide full compliance with higher fire protection and impact sound standards.

The renovation market in Germany is booming. In residential construction alone, the refurbishment of existing buildings accounts for more than two thirds of the total construction volume. At the same time, the energy efficiency of buildings is rapidly becoming a key consideration: as well as insulating the outside of the building, a new heating system and the installation of underfloor heating can significantly reduce energy consumption.

The floor structure in existing buildings can, however, be difficult to work with because there is usually only minimal space available for the installation of underfloor heating. Our range now includes new Klett fleece variants specifically for this purpose; their low material thickness makes them ideal for renovation projects. Our fleeces can even be applied directly to existing floors.

For example, the use of mineral insulation is recommended in projects where underfloor heating is installed on a wooden beam ceiling in an old building. Our new Fiberklett system board is made of organic mineral wool and is also suitable for new buildings: in housing development projects especially, higher fire and impact sound insulation standards are becoming increasingly relevant. Our Fiberklett system panels combine the proven advantages of the hook and loop system technology with the benefits of mineral wool.



In building projects with minimum installation heights or special fire protection and impact sound specifications: our new Klett system series meets all requirements.

Mineral wool consists almost exclusively of natural mineral materials and can be repeatedly recycled.

As an insulation material with fire class A1 according to DIN EN 13501-1, it is non-flammable and thus contributes to fire protection. Due to the open-pored structure of the mineral wool, our Fiberklett MW system panels offer very high impact sound insulation and thus reduce noise considerably. Thermal insulation is also guaranteed: the system panels provide optimum thermal insulation, minimise heat losses downwards and contribute to better energy efficiency.



SCHÜTZ Klett systems provide optimum thermal insulation, minimise heat loss downwards and thus contribute to better energy efficiency in the building.



Our Klett systems are quick and easy to install: the heating pipe and system insulation board interlock perfectly to ensure maximum grip.

Our SCHÜTZ hook and loop systems can be installed quickly and easily, both in new builds and in existing buildings. The heating pipe is attached to the fibre top layer by means of a hook tape in a one-man process. The heating pipe and system insulation board interlock perfectly to ensure maximum grip. To ensure that all pipes are correctly spaced and straight, the insulation boards offer a grid with a standardised laying template.

For more information, visit www.schuetz-energy.net.

JEC WORLD IN PARIS: SCHÜTZ COMPOSITES

presented the wide range of applications for the company's high-tech materials

JEC WORLD
2022 The Leading International
Composites Show
May 3-5, 2022 | PARIS-NORD
VILLEPINTE

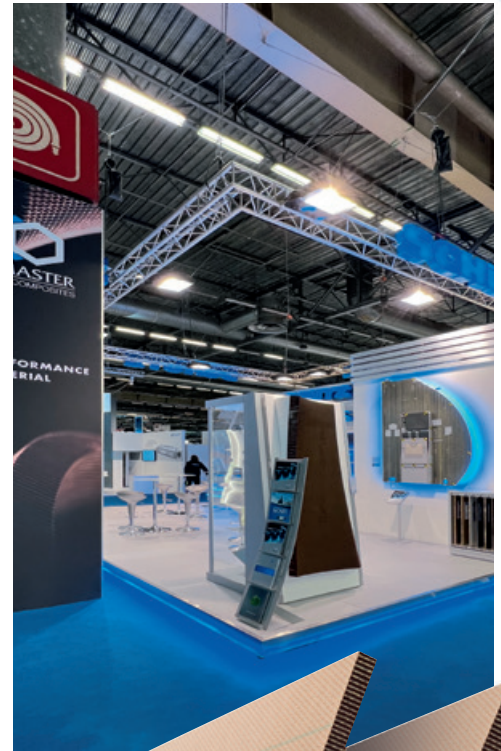
Vive la France! Finally, a major trade show could take place in the French capital. At JEC World in Paris, SCHÜTZ COMPOSITES presented state-of-the-art composite materials for high-tech and energy-efficient applications. Visitors to the booth learned all about the huge range of applications and many benefits that SCHÜTZ offers thanks to the optimum combination of in-house manufactured lightweight honeycomb materials and high-performance model and mould making.



After an interval of two years, JEC World opened its doors again at the exhibition centre in Paris.

This is the leading international trade fair for the composites industry – and visitor interest was correspondingly high. More than 1,300 exhibitors from 112 countries seized the opportunity to present their composite products and services.

The SCHÜTZ COMPOSITES team gave the trade visitors interesting insights into our cooperation with Team Malizia headed by professional racing sailor Boris Herrmann. The company not only shares a commitment to climate protection and sustainability with this world-class yachtsman, but also contributes technical expertise in the construction of high-performance racing yachts. For example, the deck mould for Herrmann's new boat, which will be unveiled around the middle of this year, was manufactured entirely at the SCHÜTZ COMPOSITES plant in Siershahn. SCHÜTZ also supplies CORMASTER® honeycomb materials for many components to the shipyard where the new yacht is being built. The "Malizia III" continues SCHÜTZ's successful tradition of building high-tech sailing yachts.



Lightweight honeycombs for a wide range of applications

Apart from racing, at our trade show booth the focus was on the wide range of applications for our high-tech composite materials in automotive construction and the aerospace industry.



As one of the most important trade fairs for composites, parts manufacturing and the associated supply chains, JEC World in Paris is the ideal platform for SCHÜTZ COMPOSITES to present our comprehensive expertise, and on the three days of the trade show, we welcomed many visitors who had come to the booth to see our exhibits.

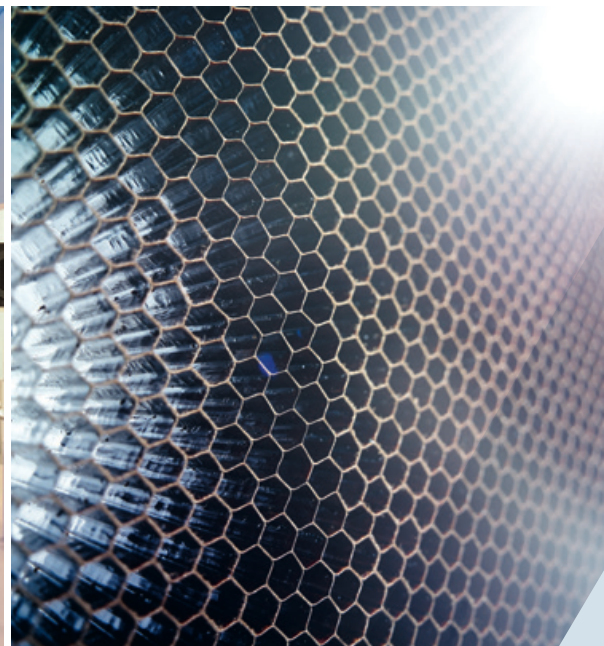
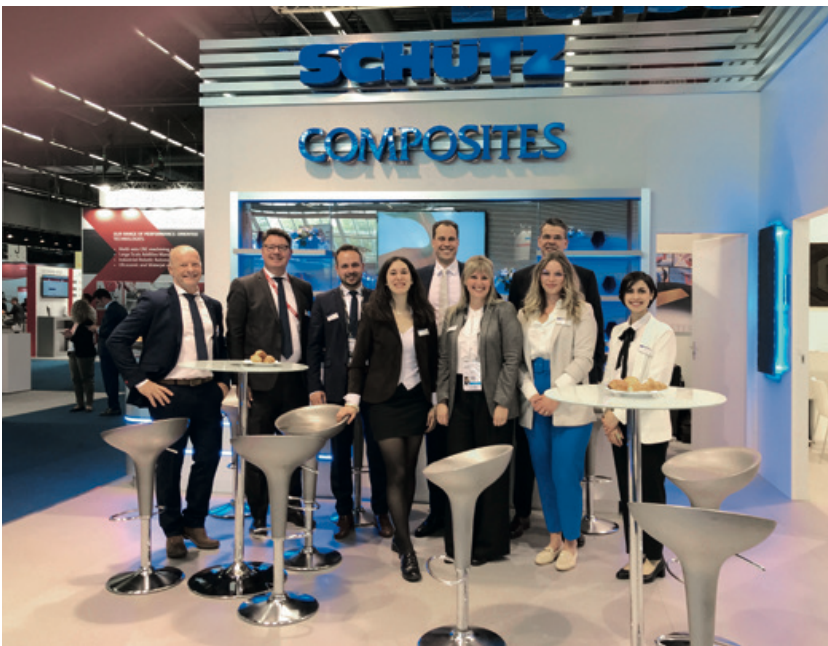
For over three decades, we have been producing CORMASTER®, a high-tech material that combines the highest mechanical strength and resistance with an extremely light weight thanks to its honeycomb design. The material is also resistant to extreme heat and humidity as well as to corrosion from oils, water and paraffin. The aramid paper-based material is used wherever low weight and maximum stability are required.



Maximum performance in the aerospace industry

The modern honeycomb material offers outstanding processability. We can mill CORMASTER® into all kinds of shapes using our state-of-the-art machinery. Whether used as sandwich or engineered panels, milled or formed parts or curved sandwich panels from the autoclave – our honeycombs are suitable both for load-bearing structural parts and for high-quality interior design. In modern aircraft construction, for example, they help to reduce fuel consumption and thus lower CO₂ emissions. An excellent example of our market expertise as well as our production technology know-how is a current project we have

implemented with Airbus and Satair, a leading global supplier of spare parts for civil aviation. The semi-finished floor panel ASFP (Airbus Semi-Finished Floor Panel) sets new standards in the field of PAX and cargo floor panels. Airbus operators worldwide benefit from excellent performance, weight savings and numerous other cost-reducing advantages. In order to guarantee a consistently high level of manufacturing, all process steps at SCHÜTZ COMPOSITES, from development to delivery, are certified according to EN ISO 9001 and EN 9100. This standard was developed specifically for the aerospace and defence industry and ensures a high level of production quality.

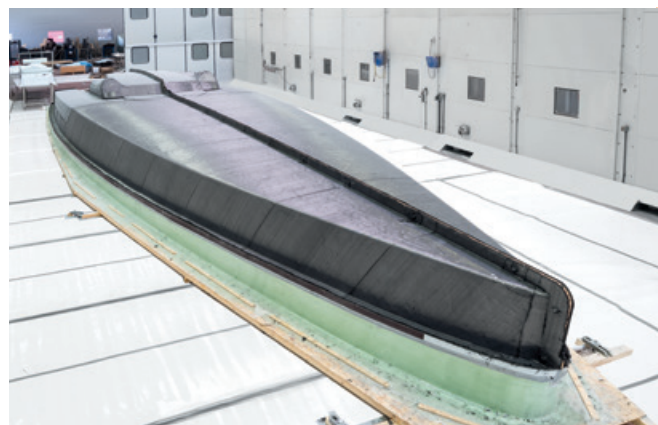


We would like to thank all our customers and visitors for the many productive and interesting meetings and talks at JEC World in Paris. Especially after such a long period without trade fairs, we were delighted to be able to see so many people and engage in personal exchange at a high professional level.

Model making at the most advanced technical level: The mould for the deck of Team Malizia's yacht

In a truly challenging and exciting project with a very short turn-around time, SCHÜTZ COMPOSITES produced the deck mould for the new boat for Boris Herrmann and his Team Malizia. Among other races, the world-class yachtsman will be competing in the Ocean Race 2022/2023 and the Vendée Globe 2024/2025 in this custom-built boat.

In their dream of staying a ship's length ahead of the competition in the most demanding international sailing races, Team Malizia will for the first time be competing in a custom-built racing yacht. With our deep passion for sailing, we are proud to support this ambitious project by contributing our construction expertise as Official Technical Partner and Official Supplier. The first phase of the project has been completed: the construction of the new, custom-designed deck mould, which SCHÜTZ COMPOSITES built in record speed with a team of 20 at the Siershahn site. Design work on the mould started in July 2021, and by August we had received approval to build the mould.



Design work on the mould started in July 2021, and by August we had received approval to build the mould.

Styrofoam blocks were placed on a wooden base and milled to the required shape. The team then applied epoxy resin





Malizia

With our deep passion for sailing, we are proud to support this ambitious project by contributing our construction expertise as Official Technical Partner and Official Supplier.



and glass fibre fabric to create a vacuum-tight layer, which was coated with an epoxy resin paste and milled to the final geometry. The model was covered with carbon fibre fabric and impregnated with resin in the subsequent vacuum infusion process. For this, experienced process engineers from SCHÜTZ developed a specific infusion strategy to evenly distribute the resin and ensure that the fibres were completely impregnated. To achieve an

ideal process and perfect curing of the material, special temperatures are required, which were generated in a tempering chamber set up in the hall.

To ensure the structural integrity of the mould, the SCHÜTZ team mounted a steel substructure built in the company's welding shop in Siershahn and laminated it to the back of the mould. Finally it was time for the moment of truth. Demoulding is always a tense time for the model and mould makers, as it reveals whether the work of three months had been successful. The mould lifted, and, even with the geometry-specific undercuts, detached effortlessly from the master model. To the relief of all involved, the mould was faultless and the boat deck was packed and loaded for transport to the shipyard in Vannes, France, where Team Malizia's new IMOCA boat will be built in the coming months and completed in time for the first regatta in the current campaign.



Over three decades of constant growth:

The success story of SCHÜTZ CONTAINER SYSTEMS in North America

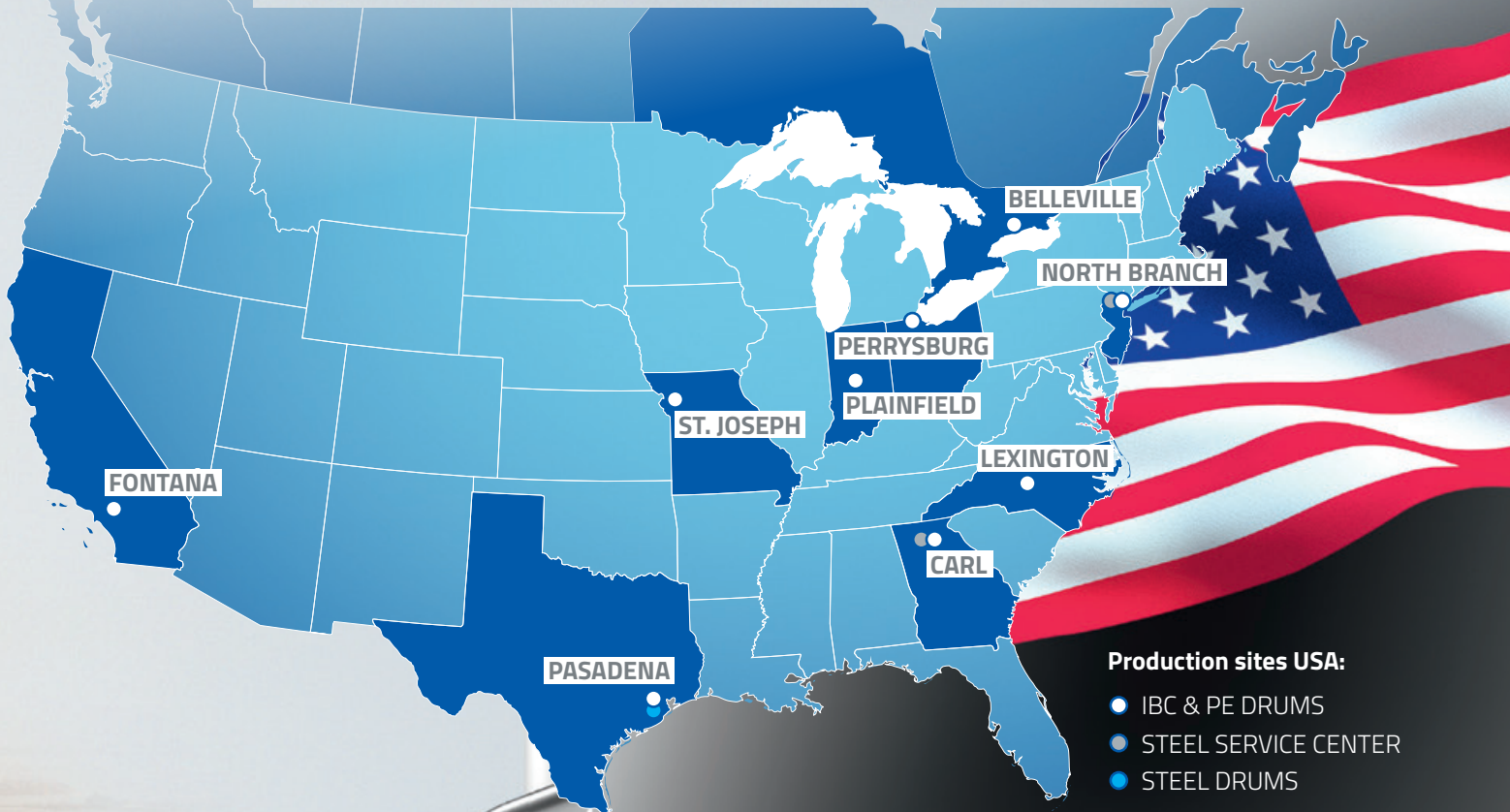
SCHÜTZ's entry into the North American market in 1991 marked the start of a true success story. The demand for our packaging solutions in the region remains as high as ever, even more than 30 years after the first factory in the United States opened. To meet this ongoing demand, SCHÜTZ CONTAINER SYSTEMS (SCS) continues to invest in the expansion and development of its manufacturing network.

Opening up the US market was a decisive step for SCHÜTZ on the path to becoming a global player in the packaging industry. However, entering this strategically crucial economic region also presented a number of challenges. From early on, we needed to establish basic coverage for the North American market, a huge geographical area. To achieve this, the newly founded company SCHÜTZ CONTAINER SYSTEMS opened three branches in its very first year. The sites in New Jersey, Ohio and



Georgia are still important strategic sites for SCS's further growth. Even more than three decades after opening, the plants are still equipped with state-of-the-art technology thanks to our continuous investment in personnel and machinery, modern equipment and infrastructure. We follow this same principle at all of our other production sites that have been opened

over the past years to meet the ever-growing demand for packaging solutions. Our subsidiary currently operates twelve production plants in North America alone. Individual plants back each other up when demand peaks. This means that customers can always rely on our remarkably high supply security, even in exceptional situations.



SCHÜTZ
 ECOBULK / REGOBULK



Safety and the best possible service were also the focus in 1996 when SCS introduced the "North America Ticket Program". The start of the collection and subsequent reconditioning of used IBCs was a milestone in the successful growth of SCS. We have gradually built up a comprehensive reconditioning network, unique in North America, ensuring the ecological reconditioning of reclaimed IBCs to the highest environmental standards in our own plants.



With our **FOODCERT** and **CLEANCERT** IBCs and drums, we comply with the highest packaging standards for foods and technically sensitive filling goods.



Packaging for a wide range of applications



The basis for the success story of SCHÜTZ CONTAINER SYSTEMS is deeply rooted in the company's DNA: SCS consistently develops state-of-the-art equipment and top-level technological expertise. Since the company was founded, we have continuously invested in the technical equipment at all its locations, allowing us to guarantee the uniform

quality of all products and processes across the board. All SCS production facilities are equipped with state-of-the-art 3-layer and 6-layer extrusion blow moulding lines, enabling us to produce IBCs and PE drums to meet customer needs for a wide range of applications, including the most sensitive ones. For example, the majority of SCHÜTZ plants in North America are certified according to FSSC 22000. With our FOODCERT and CLEANCERT IBCs and drums, we comply with the highest packaging standards for foods and technically sensitive filling goods.

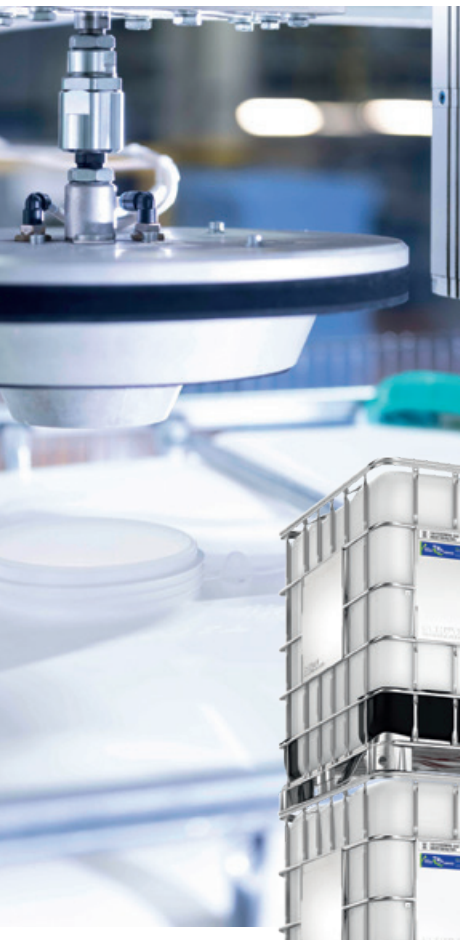
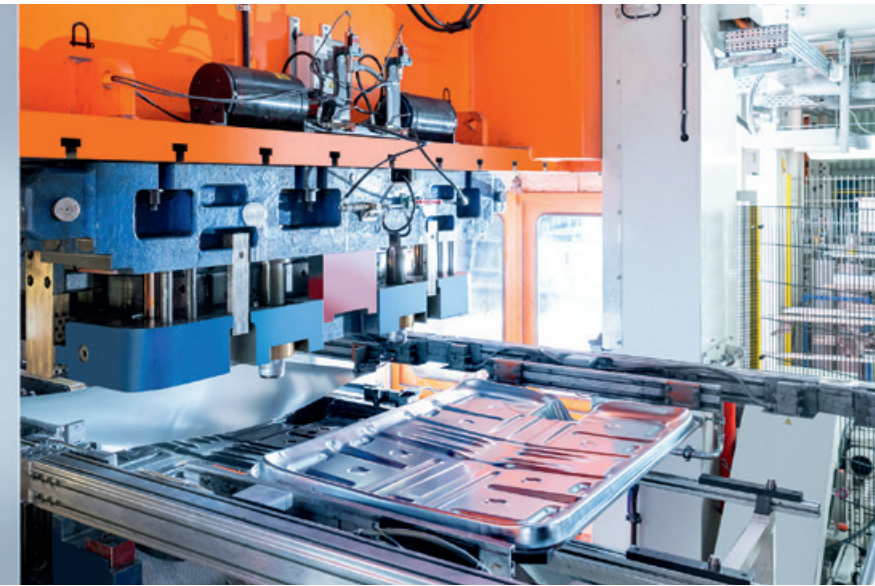
Investing in steel drum production

SCHÜTZ CONTAINER SYSTEMS is not only a pioneer when it comes to IBCs and plastic packaging: in 2016, SCS was the first company to open a new, purpose-built steel drum production facility in the United States in more than 20 years. At the Houston site, an additional state-of-the-art production line was installed at the beginning of this year to expand the steel drum portfolio. This gives customers in North America access to a fully comprehensive range of new and reconditioned IBCs, PE and steel drums.

SCHÜTZ CONTAINER SYSTEMS is renowned in the market for an exceptionally high level of vertical integration. To ensure the supply of steel components for our packaging, the company operates two steel service centres – one at the headquarters in North Branch and a second one in Carl, Georgia. All key IBC parts are manufactured here, including steel grids, pallets, bottom plates, and label plates.



A focus on supply security



Maximum vertical integration, a comprehensive range of products, extensive technical know-how and state-of-the-art technology in a unique network of production sites – all these factors helped SCHÜTZ CONTAINER SYSTEMS to establish itself in the North American market in record time. Supply security and maximum flexibility for customers remain the company's top priorities. In order to maintain this in the future and guarantee consistently high quality across all product ranges and manufacturing processes, SCS continues to invest in infrastructure. With fluctuations on the labour market increasingly posing a challenge for manufacturing, automation technology is becoming more important. The aim of SCS is to increase customer proximity even further, minimize transport time and optimise the closed packaging cycle even further, while achieving maximum environmental friendliness.



Current projects at SCHÜTZ CONTAINER SYSTEMS

In order to continue its growth, SCHÜTZ CONTAINER SYSTEMS places the highest value on state-of-the-art machinery and plant technology and we are committed to continually expanding the production network. These are some of our latest investments:



2021 Expansion of the factory in Missouri

Local production of the MX 560I has been expanded to supply agrochemical customers in the region. There is a high demand for this container due to its compact size and optional EVOH permeation and oxygen barrier.



2021 Expansion in Perrysburgh

The Perrysburg site has been expanded to include four new blow moulders and a 6-layer line for the production of IBCs equipped with an EVOH permeation barrier. This investment will further shorten delivery times for customers in the Midwest.



2021 New production plant in Belleville (Ontario)

The opening of the first production site in Canada is a clear commitment to all customers in this economic region, which has been growing for years. Short distances, service and contacts – SCHÜTZ CONTAINER SYSTEMS produces IBCs and PE drums in a wide variety of designs at this site.



2022 Reconditioning in the Canadian factory

SCHÜTZ CONTAINER SYSTEMS is enlarging its Canadian site in Belleville (Ontario) with a high-tech reconditioning plant which further expands the collection network in North America.



A RACE WE MUST WIN
CLIMATE ACTION NOW!



explorer

MUSO

MOCA
GLOBE SERIES

GORE-TEX
ADVANCED
OCEAN
TECHNOLOGY

 Boris

Malizia

PRINCE ALBERT II
OF MONACO
FOUNDATION

UNITED BY SHARED VALUES AND GOALS –

SCHÜTZ enters into a partnership with Boris Herrmann

A passion for technically superior solutions and protecting our planet's natural resources – these two shared convictions are the foundation for a new strategic partnership: SCHÜTZ is the Official Technical Partner and Official Supplier of the world-famous sailor Boris Herrmann and his Team Malizia. In this role we also bring to the cooperation our passion for sailing and our expertise and successful tradition in the construction of racing yachts: the lightweight material CORMASTER®, developed by SCHÜTZ, is a key component in Boris Herrmann's new racing yacht.

ARACE WE MUST WIN – CLIMATE ACTION NOW! This slogan is emblazoned on Boris Herrmann's yacht, the Seaexplorer. The motto stands for the sporting spirit and dedication to thrilling competitions as well as the urgent need to tackle one of the biggest and most pressing challenges of our time: protecting the climate and the environment. This mission, which SCHÜTZ supports on many levels, is one that Boris Herrmann and Team Malizia have been committed to for many years. **The Oldenburg-born sailor has worked ceaselessly to create awareness for the very fundamental role the ocean plays for climate protection and the continued existence of our planet as we know it.** He uses his broad media presence to share this message, as well as collecting data on the state of the ocean with measuring instruments installed on board his ship which is then shared with researchers and scientists. Boris Herrmann is convinced that only technical progress can help humanity to better understand causes and consequences, to recognise and avoid negative influences and hence successfully combat climate change.



A RACE WE MUST WIN NOW!

© Vincent Curutchet (Alea)



In all four corporate divisions, SCHÜTZ offers products and services that help users to become more efficient, save materials and energy, and so reduce their own CO₂ footprint.

Launch of the new SCHÜTZ CLIMATE BLOG

In all four corporate divisions, SCHÜTZ offers products and services that help users to become more efficient, save materials and energy, and so reduce their own CO₂ footprint. We are a pioneer of the circular economy with our resource-saving packaging systems, as a system provider for energy-efficient, comfortable homes, and as a trailblazer in the development and application of state-of-the-art lightweight materials. To communicate this with even greater focus, we have created a new section on our main corporate website: the SCHÜTZ CLIMATE BLOG.

In future, we will be publishing all environment-related activities from the world of SCHÜTZ in a dedicated section. The ever-expanding range of content will also include current race results and other activities and reports from Boris Herrmann and his mission. Each topic page will

examine in greater detail the corresponding contribution to environmental and climate protection and will provide in-depth links to the relevant product or service pages.

www.schuetz.net/climate-action





Sustainable messages for all our areas of activity

As a globally operating technology company, SCHÜTZ works in many different fields to make a positive contribution to environmental and climate protection. We have defined four main areas of action and created a slogan for each one that sums up our strategy while simultaneously incorporating and concretising our general motto "CLIMATE ACTION NOW!".

ECO-INNOVATION NOW!

We believe in the power of the technically superior solution. For our planet, our climate and our customers. That is why we are constantly developing our products, services, processes and facilities to become even more environmentally and economically efficient.

ADVANCED TECHNOLOGY NOW!

We use the latest manufacturing and environmental technology. With our systems and machinery, all developed in-house, we are leaders in many areas and are continuously investing in the further expansion of our worldwide production network.

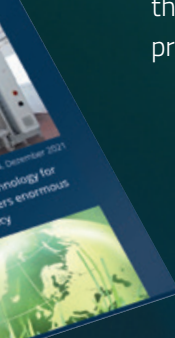


RESOURCE EFFICIENCY NOW!

We are committed to using our planet's natural resources responsibly. As a pioneer of the circular economy, we continue to minimise the input of materials and energy per manufactured unit and rely on reusing and recycling wherever possible.

GREEN COMPETENCE NOW!

We believe the best way to tackle great challenges is with comprehensive expertise. That is why we invest in expert research, in diverse and broad-based training measures and personal development to ensure that people and the environment benefit from tomorrow's knowledge.



The IBC – an example of how SCHÜTZ practices environmental and climate protection

In the SCHÜTZ Group, the products and services of the PACKAGING SYSTEMS division make a particularly substantial contribution to environmental and climate protection. Our production and service network is represented globally at more than 50 locations around the world, and our packaging is used millions of times a day. We are constantly optimising our IBC system, which has revolutionised the transport of liquid filling goods, to achieve maximum ecological and environmental efficiency:



Saving material

By using constantly improved manufacturing technologies and innovative design, we are reducing the amount of material required, while maintaining or increasing product safety.



Sustainable product design

Optimum preparation for reuse through modular design and exceptionally robust and durable key components.



Collection

Collection of used packaging by a worldwide network of our own factories: fast, free of charge and in small quantities starting from single containers.

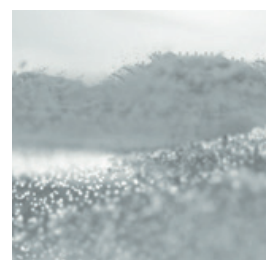


Reuse

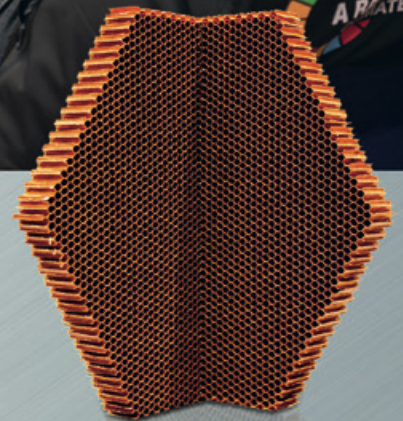
Globally standardised reconditioning process in accordance with the latest environmental and safety standards, including cleaning and reusing the steel grids.

Material recycling

Recovery of high-quality plastic material from the replaced inner bottles in keeping with the concept of the circular economy.



For more information about the cooperation with Boris Herrmann and other examples of sustainable solutions by SCHÜTZ visit: www.schuetz.net/climate-action



Tradition and future – with high-performance honeycombs

The SCHÜTZ COMPOSITES division develops and produces lightweight materials under the brand name CORMASTER®. These materials are used in the aerospace industry as well as in boat and vehicle construction. For example, the company’s own successful “Container” racing yachts were largely built using the composite material developed and produced in-house by SCHÜTZ. As Official Supplier, we use our honeycomb blocks to manufacture essential structural parts for Boris Herrmann’s new boat.

SCHÜTZ is especially proud to have contributed our decades of expertise as Official Technical Partner during the design and construction phases of the new yacht. For example, we were responsible for the production of the entire deck mould, and expertise and engineering services from Westerwald also flowed into the further development and construction of the foils, which give the boat its incredible speed.

Use of recyclate

100% of the recycled material flows back into the packaging in the form of plastic pallets and corner guards, IBC inner bottles and plastic drums with recycled content.



Perfect PROSPECTS for candidates:

A wide choice of career opportunities in a future-safe sector

State-of-the-art technologies, a global presence and security – these are things that SCHÜTZ and its currently more than 7,000 employees around the world stand for. As a dynamically developing company, we are continuously growing. As a result of this process we are creating new and versatile positions which we aim to fill with dedicated people who share our long-term vision – because we believe that vision counts, in every respect.

SCHÜTZ is one of the largest employers and training companies in Rhineland-Palatinate, Germany. With our three sites in Westerwald we have deep roots in the region. The headquarters in Selters, the largest site and the centre of competence, is the engine and heart that drives the development of the entire SCHÜTZ Group. This is where we produce key components, develop new products and build state-of-the-art production lines for our 55 sites worldwide.



As a family-owned company that has grown over decades, we focus on values and principles that we group together under the term sustainability. The responsible use of the earth's natural resources is deeply anchored in SCHÜTZ's corporate DNA. Our core competence is sustainable industrial packaging, and we are continuously working on optimising our products. In our research and development departments, over 100 engineers, designers and specialists work on improving products and processes. These skills and this dedication allows us to create forward-looking processes, time and again, making SCHÜTZ packaging truly unique worldwide.

Exciting development opportunities

To ensure our long-term success, we continuously invest in our own know-how and in advanced manufacturing and environmental technology. Our tools, machines and workplaces are state-of-the-art. Our company philosophy of doing things ourselves whenever possible creates the best development prospects and opens up an exceptionally wide range

In cinemas now: YOUR CAREER OPPORTUNITIES AT SCHÜTZ.



SCHÜTZ and its headquarters in Selters is synonymous with a broad spectrum of exciting tasks and career opportunities – in the Westerwald region and around the globe. **Join our team and launch your career at SCHÜTZ!**

**MORE INFORMATION AND OUR LATEST
CINEMA ADVERT CAN BE FOUND AT:
www.schuetz.net/en/CAREER**

of activities within the SCHÜTZ Group. This means that people who want to achieve something professionally will find the best conditions at SCHÜTZ. Whether in the technical, commercial or IT sector – in Selters alone we employ people in over 100 different professions.

The tasks throughout the company are complex and varied. For example, our Technical Service is responsible for the implementation and subsequent maintenance and servicing of the machines and systems at our plants around the world. Supported by our own computing centre and a high-performance server landscape, our IT department executes complex digitalisation, networking and automation projects. In tool, machine and plant construction, we use the latest technologies, such as augmented reality applications, in the implementation of intricate engineering projects.

Supporting employees in the long-term

We are great believers in actively supporting our employees and we offer a wide range of professional training courses, further education and language classes at our in-house training centre. By doing so, we are continuously creating opportunities for our staff to broaden their professional knowledge, both in Germany and around the world. We are committed to helping our employees achieve their own development goals. In addition, we offer attractive remuneration packages and profit-sharing. We do all this because we know just how important well qualified and highly motivated staff are for SCHÜTZ's innovative strength.

Interested in a career at SCHÜTZ?
You will find more information about working for our group and our current vacancies at

www.schuetz.net/en/CAREER



Electronic technicians at SCHÜTZ ensure the supply of power that brings our factories, plants and machines all over the world to life. The 1,000 square metre electrical workshop in Selters is fully equipped with technologically advanced machinery and includes integrated control cabinet construction.

The employees at SCHÜTZ play a major role in the sustainable success and performance of our company. HERE ARE SOME EXAMPLES:



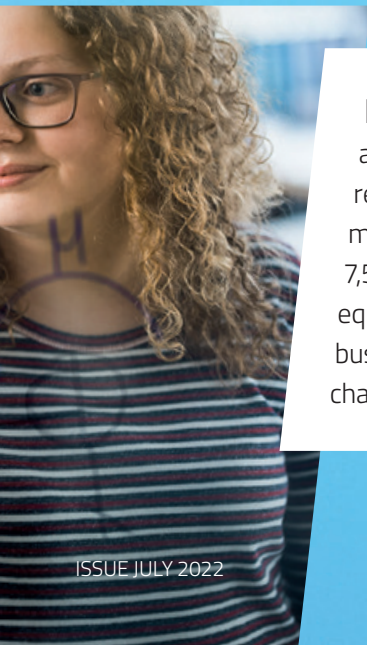
Trainees have a very wide range of opportunities to launch their career at SCHÜTZ. With options including technical, commercial and IT professions, our broad training programme has been awarded the IHK seal "Best trainees – trained by us" multiple times.



Industrial & plant mechanics are part of the technological backbone of our group of companies. Due to the high vertical range of manufacture in the construction and maintenance of our production facilities all over the world, the range of tasks in this segment is extremely diverse. The key factor for success here is the seamless interaction of all specialised skills.



IT specialists at SCHÜTZ ensure that all the necessary services and applications for global production and commercial processes function smoothly. The diversity of tasks and depth of expertise in our company is reflected in the SCHÜTZ IT department. More than 100 employees are committed to advancing the digitalisation of our processes – supported by our own computer centre and state-of-the-art server landscapes.



Machinists & Toolmakers ensure that we are perfectly equipped for everyday and project-related tasks. With a machine park comprising more than 45 different machining systems on 7,500 m² of hall space, the tool shop is ideally equipped to support the teams in all SCHÜTZ business divisions, and help them tackle challenges and implement ideas.





NEW!



- + Approved for filling products with flash point $\geq 37.8\text{ }^{\circ}\text{C}$ / $100\text{ }^{\circ}\text{F}$ according to FM 6020 test
- + UL-tested for flammable and combustible liquids
- + Double wall construction for the highest safety
- + Discharge through the dip-tube and/or a pump system
- + Suitable for use in ex-zones 1 and 2

SCHÜTZ ECOBULK SX-D – makes safe even safer!

Unique protection – the first “FM APPROVED” combination IBC for recognised risk minimisation during transport and storage: Our high quality HPDE inner bottle is enclosed in a leak-proof steel hull. This prevents leakage of your filling product, even under extreme conditions. In addition, the closed discharge system protects against direct contact with the product. The mobile IBC solution with integrated containment basin is our top choice for all filling products and applications with heightened safety requirements.

We welcome your questions and suggestions: tcs@schuetz.net



Schütz GmbH & Co. KGaA
Schützstraße 12
D-56242 Selters
Phone +49 2626 77 0
E-mail info1@schuetz.net
www.schuetz.net