

R·M·D  
KWIKFORM

Bringing  
structures  
to life



PRODUCT BROCHURE

# Aluminium Beams

RMD Kwikform United Kingdom

# Aluminium Beams versatile, lightweight and durable beams



## Product Overview

Aluminium Beams combine the benefits of strength, lightness and the ease of handling with consistency, versatility and exceptional durability. With an exceptional range of accessories, the beams form a complete system that can be used for virtually unlimited configurations and applications. RMD Kwikform has a portfolio of two Aluminium Beams: Albeam - 225mm deep heavy duty primary beam for slab support, with a very high bending and concentrated load capacity. Alform - 150mm deep beam designed for wall formwork and secondary bearer for soffit support applications.

### Faster

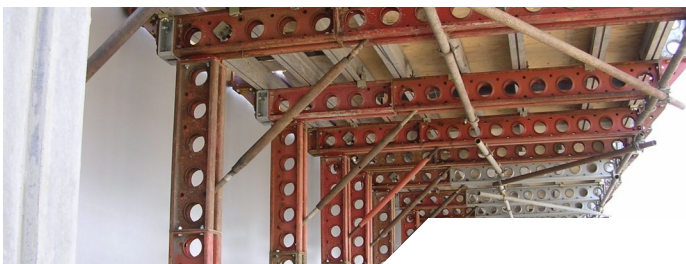
- Aluminium Beams are always straight, simplifying and speeding up assembly.
- They have a consistent cross-section, eliminating time and cost implications of selecting and hand-finishing timber.

### Safe

- They offer greatly increased bending and shear resistance than timber, which means they are safer. They also allow more weight to be supported over greater spans with less equipment, saving time and costs.

### Easier

- Aluminium Beams are lighter and easier to handle than timber, their unique profiles reduce damage. Alform Beams bevelled edges enable plywood sheeting to be stripped quickly and easily.
- Aluminium Beams can be re-used a number of times. When they finally reach the end of their useful life, their value is still around 25% of their original cost.



# Aluminium Beams versatile, lightweight and durable beams



## Applications

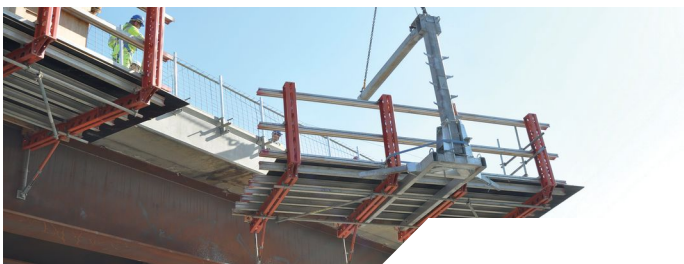
RMD Kwikform's Albeam and Alform Beam form a complete system capable of virtually unlimited configurations and applications including:

### Wall Formwork

Alform beams can be used in conjunction with our market leading Superslim Soldiers to assemble large wall formwork panels, circular formwork, climbing formwork or even column shutters. Stop ends and other complex configurations are also easily constructed due to the wide range of supporting accessories.

### Soffit Support

A specially designed wedge clamp allows primary and secondary beams to be fixed together at right angles in soffit support applications. The high bending and shear resistance of both the Albeam primaries and Alform Beam secondaries allow for longer spans, supporting greater loads with less equipment than when using timber beams.



# Aluminium Beams versatile, lightweight and durable beams



## Features and Benefits

RMD Kwikform has two innovative aluminium beams: Alform Beam and Albeam. They are both versatile, lightweight and durable beams with an extensive range of accessories.

- **Strength-to-weight ratio**  
Far lighter and easier to handle than comparable timber beams.
- **Unique profiles reduce damage**  
Alform Beam has bevelled edges, allowing plywood sheeting to be stripped quickly and easily.
- **Increased bending and shear resistance**  
Allows more weight to be supported across greater spans with less equipment, saving time and costs.
- **Uniformity**  
Unlike timber, aluminium beams are always straight, simplifying and speeding up assembly.
- **Consistent cross-section**  
Eliminates time and cost implications of selecting and hand-finishing timber.
- **Longevity and durability**  
Aluminium beams can be re-used a number of times and have a much longer life than timber beams.
- **Residual value**  
Even at the end of practical, usable life, RMDK's aluminium beams retain around 25% of their original cost.



# Aluminium Beams versatile, lightweight and durable beams



## In Detail



### Perfect Partner

Used along with Superslim soldiers to assemble large wall formwork panels.



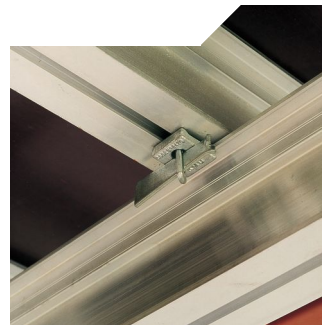
### Ease of Use

Complex configurations are easily constructed.



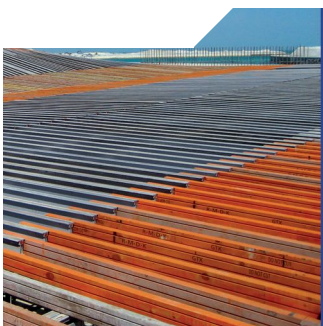
### Cost Reduction

Construction using aluminium ensures consistent alignment, accuracy and structural integrity, reducing wastage, assembly time and labour costs.



### Unique Integration

A unique wedge clamp allows primary and secondary beams to be fixed together at right-angles in soffit support applications.



### Less Equipment Needed

The high bending and shear resistance of the 150mm Alform beam - twice that of a 200mm deep timber beam - allows longer spans, supporting greater loads, to be built with less equipment.



### Lighter, Quicker, Easier

60% lighter than timber equivalent, so its easier and quicker to handle, saving time and costs.

# Aluminium Beams versatile, lightweight and durable beams

## Components

### Alform



Code	Description	Weight
AFX11200	Beam Alform 1200mm	6.8kg
AFX11500	Beam Alform 1500mm	8.5kg
AFX11800	Beam Alform 1800mm	10.2kg
AFX12100	Beam Alform 2100mm	11.9kg
AFX12400	Beam Alform 2400mm	13.6kg
AFX12700	Beam Alform 2700mm	15.2kg
AFX13000	Beam Alform 3000mm	16.9kg
AFX13300	Beam Alform 3300mm	18.6kg
AFX13600	Beam Alform 3600mm	20.3kg
AFX14200	Beam Alform 4200mm	23.7kg
AFX14800	Beam Alform 4800mm	27.1kg
AFX15400	Beam Alform 5400mm	30.5kg
AFX16000	Beam Alform 6000mm	33.9kg
AFX17200	Beam Alform 7200mm	40.7kg

### Albeam



Code	Description	Weight
ABX11200	Beam Albeam 1200mm	9.9kg
ABX11800	Beam Albeam 1800mm	14.8kg
ABX12400	Beam Albeam 2400mm	19.7kg
ABX12700	Beam Albeam 2700mm	22.3kg
ABX13000	Beam Albeam 3000mm	24.7kg
ABX13300	Beam Albeam 3300mm	27.2kg
ABX13600	Beam Albeam 3600mm	29.6kg
ABX14200	Beam Albeam 4200mm	34.6kg
ABX14800	Beam Albeam 4800mm	39.5kg
ABX15400	Beam Albeam 5400mm	44.5kg
ABX16000	Beam Albeam 6000mm	49.4kg
ABX17200	Beam Albeam 7200mm	59.3kg

### Universal Clamp



Code	Description	Weight
ALX10001	Universal Clamp	0.7kg

# Aluminium Beams versatile, lightweight and durable beams

## Components

### Alform Superslim Clamp



Code	Description	Weight
AFX20015	Clamp - Superslim	0.14kg
AFX20022	Bolt M12 Uni-fix	0.05kg
BNU12001	M12 Nut gr8.8 BZP	0.01kg
AFX20012	Clamp Assembly - Superslim	0.2kg

### Alform Wedge Clamp



Code	Description	Weight
AFX20017	Clamp Assembly Wedge	0.22kg

### Alform Internal Corner



Code	Description	Weight
AFX20007	Internal Corner	1.10kg
AFX20002	Alignment Angle	2.26kg

### Alform Internal Splice Unit



Code	Description	Weight
AFX20008	Internal Splice	3.22kg
AFX20014	Splice Unit - Arm 75mm	0.33kg
AFX20013	Clamp Block - Splice	0.09kg
AFX20019	Internal Splice Clamp	0.91kg

### Alform Light Duty Corner Strap



Code	Description	Weight
AFX20010	Outside Cornerstrap AWL = 20kN	6.18kg
BNX16001	M16 x 75 Bolt Gr8.8	0.16kg

### Alform Lok Clamp



Code	Description	Weight
AFX20009	Clamp - Lok C/W Pin AWL = 20 kN	1.17kg

# Aluminium Beams versatile, lightweight and durable beams

## Components

### Alform Adjustable Pivot



Code	Description	Weight
AFX20001	Adjustable Internal Corner	3.81kg
AFX20018	Pin - Fixing M16 dia	0.24kg
SSU10011	R-Clip	0.03kg

### Alform Clamp Plate



Code	Description	Weight
AFX20003	Alform Beam Clamp Plate	0.1kg

### Alform External Corner Bracket



Code	Description	Weight
AFX20005	External Corner Bracket	2.9kg

### Serrated Double Nut



Code	Description	Weight
AFA10015	Serrated Double Nut	0.11kg

### Alform Prop Bracket



Code	Description	Weight
AFA10020	Alform Prop Brkt	3.45kg

### Alform Lifting Bracket



Code	Description	Weight
AFA10050	Alform Lifting Bracket	3.27kg



# Aluminium Beams versatile, lightweight and durable beams

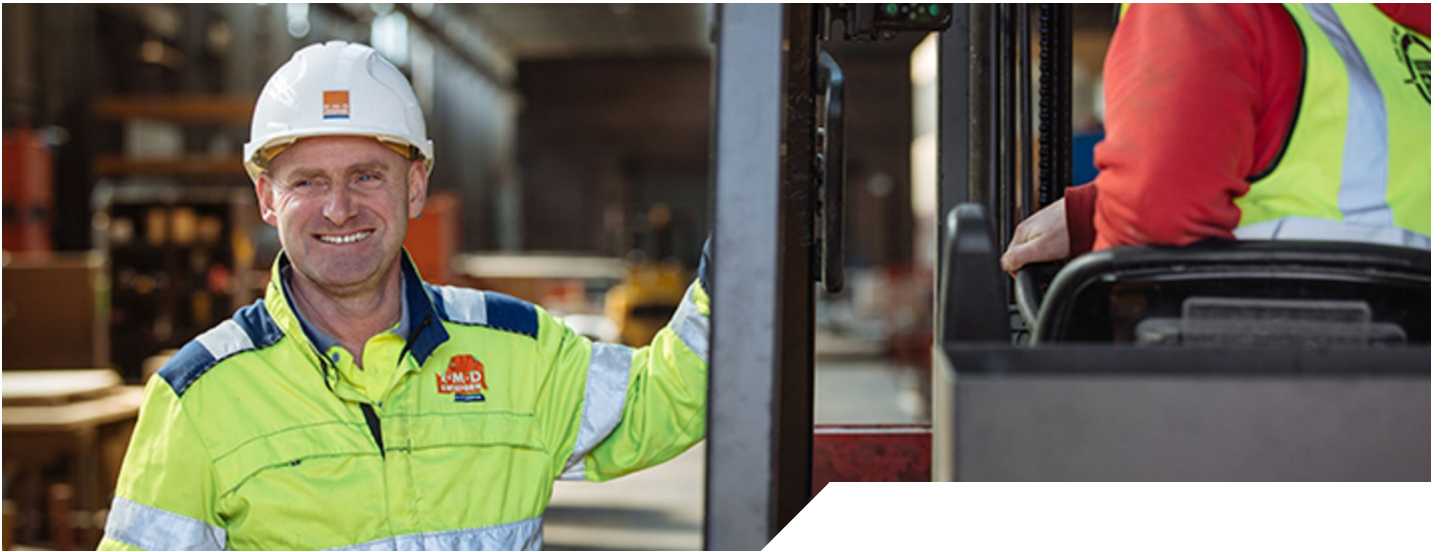
## Components

### Aluminium Beam Fixings



Code	Description	Weight
AFX20022	M12 Unifix Bolt	0.05kg
BNU12001	Nut - M12 Hex Gr8.8	0.01kg
BNX12009	M12x75 Set Pin Gr8.8 BZP	0.04kg

# Aluminium Beams versatile, lightweight and durable beams



## Services

### Our service sets us apart...

With over 85 years of experience in the temporary works industry we understand the many and varied challenges that our customers face, whatever the size of your project. Whilst our product range provides us with the capability of supporting your project, it is our people that will make the difference.

#### Sales Support

Our sales team comprises a vast wealth of experience in the sector, helping us to understand your challenges and the opportunities to save you time and money.

#### Engineered Drawings

You will be provided with technical recommendations and layout drawings showing a level of detail sufficient to enable straight forward on-site erection. For specifically fabricated items comprehensive operating instructions will be provided.

#### Customer Service

We work with customers on all scale of projects and as such recognise that your requirements are all different. We provide a level of customer service to suit your requirements ranging from on site training to simple reordering of replacement parts.

#### Technical Expertise

Every project, large or small, requires unique system design. Our highly skilled team of engineers and technical experts will understand first your requirements, and provide a solution designed to exceed these. We do this through approaching projects with an open mind and a desire to provide the most appropriate solution.

#### Safety

RMD Kwikform prides itself on the inherent safety of our products and the solutions that we design. The construction industry's greatest asset is its people and we design schemes and solutions with this in mind at all times.



## Contacts

### RMD KWIKFORM UNITED KINGDOM

#### HEAD OFFICE

RMD Kwikform, Brickyard Road,  
Aldridge, Walsall, WS9 8BW, UK  
Tel: +44 1922 743743  
Email: info@rmdkwikform.com

#### LONDON AND SOUTH EAST

24 River Road, Barking, Essex, IG11  
0DG  
Tel: +44 1708 552975  
Fax: +44 1708 557048  
Email: info@rmdkwikform.com

#### MIDLANDS

Midland Sales Centre, Stubbers  
Green Road, Aldridge, Walsall, WS9  
8BL  
Tel: +44 1922 450800  
Fax: +44 1922 450896  
Email: info@rmdkwikform.com

#### NORTH

8 Peel Road, Skelmersdale, WN8  
9PT  
Tel: +44 1942 273815  
Fax: +44 1942 273819  
Email: info@rmdkwikform.com

#### SCOTLAND

1650A London Road, Glasgow, G31  
4QG  
Tel: +44 141 554 7425  
Fax: +44 141 554 8392  
Email: info@rmdkwikform.com

#### WALES AND SOUTH WEST

Penarth Road, Cardiff, Glamorgan,  
CF11 8UP  
Tel: +44 29 2037 4521  
Fax: +44 29 2023 8703  
Email: info@rmdkwikform.com

#### WETHERBY

Unit 608, Thorpe Arch Estate,  
Wetherby, West Yorkshire  
Tel: +44 1937 229402  
Email: info@rmdkwikform.com

### WORLDWIDE CONTACTS

#### RMD AUSTRALIA

Tel: +61 (08) 8179 8200  
Fax: +61 (08) 8179 8201  
Email: rmd.australia@rmdformwork.com

#### RMD NEW ZEALAND

Tel: Tel: 9 259 0353  
Fax: Fax: 9 276 6732  
Email: rmd.auckland@rmdformwork.com

#### RMD KWIKFORM HONG KONG

Tel: +852 2415 4882  
Fax: +852 2745 0232  
Email: rmd.hongkong@rmdkwikform.com

#### RMD KWIKFORM ASIA PACIFIC

Tel: +63 917 5266760  
Email: hamish.bowden@rmdkwikform.com

#### RMD KWIKFORM PHILIPPINES

Tel: +632 696 7635  
Fax: +632 661 6456  
Email: rmd.manila@rmdkwikform.com

#### RMD KWIKFORM UAE

Tel: +971 6 553 4173  
Fax: +971 6 553 4327  
Email: rmd.uae@rmdkwikform.com

#### RMD KWIKFORM QATAR

Tel: +974 4465 3034  
Fax: +974 4465 3282  
Email: rmd.qatar@rmdkwikform.com

#### RMD KWIKFORM BAHRAIN

Tel: +973 1738 2724  
Fax: +973 1738 2624  
Email: rmd.bahrain@rmdkwikform.com

#### RMD KWIKFORM OMAN

Tel: +968 2413 7828  
Fax: +968 2413 7998  
Email: rmd.oman@rmdkwikform.com

#### RMD KWIKFORM SAUDI ARABIA

Tel: +966 13 896 8665  
Fax: +966 13 896 8664  
Email: rmd.ksa@rmdkwikform.com

#### RMD KWIKFORM INDIA

Tel: +91 44 6693 3300  
Email: rmd.india@rmdkwikform.com

#### RMD CHILE

Tel: +56227149800  
Email: rmd.chile@rmd.cl

#### RMD KWIKFORM USA

Tel: +1 303 252 7000  
Fax: +1 303 252 7319  
Email: usa@rmdkwikform.com

#### RMD KWIKFORM SOUTH AFRICA

Tel: +27 12 004 1000  
Email: info.sa@rmdkwikform.com

#### RMD KWIKFORM IRELAND

Tel: +353 (0)1 830 2500  
Fax: +353 (0)1 830 2741  
Email: info@rmdkwikform.com

#### RMD KWIKFORM ESPAÑA

Tel: +34 91 555 6104  
Fax: +34 91 555 4745  
Email: rmd.madrid@rmdkwikform.com

#### RMD KWIKFORM DBEME

Tel: +973 1738 2724  
Fax: +973 1738 2624  
Email: rmd.me@rmdkwikform.com

#### RMD KWIKFORM PANAMA

Tel: +507 280.0869  
Email: rmd.panama@rmdkwikform.com

#### RMD KWIKFORM COLOMBIA

Tel: +57 321 214 71 18  
Email: rmd.bogota@rmdkwikform.com

[www.rmdkwikform.com](http://www.rmdkwikform.com)

Our policy is one of continuous improvement and we reserve the right to change, alter or modify any detail, design, capacity, weight, dimension or code without prior notice being given.  
The arrangements of equipment shown in photographs may have been assembled by others and therefore not reflect current best working practices or legislation requirements.  
An Interserve Company