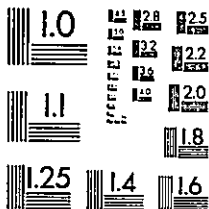
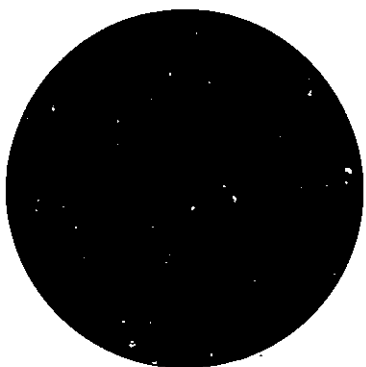
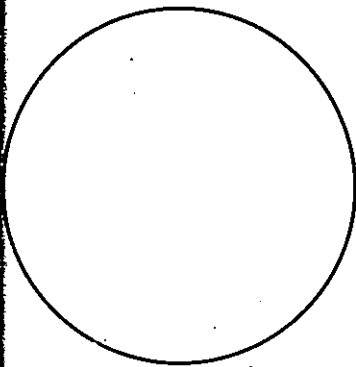
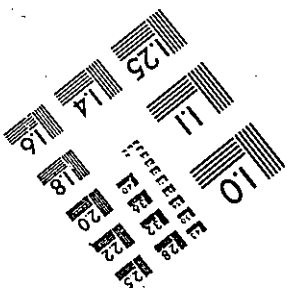
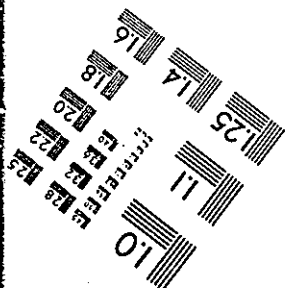


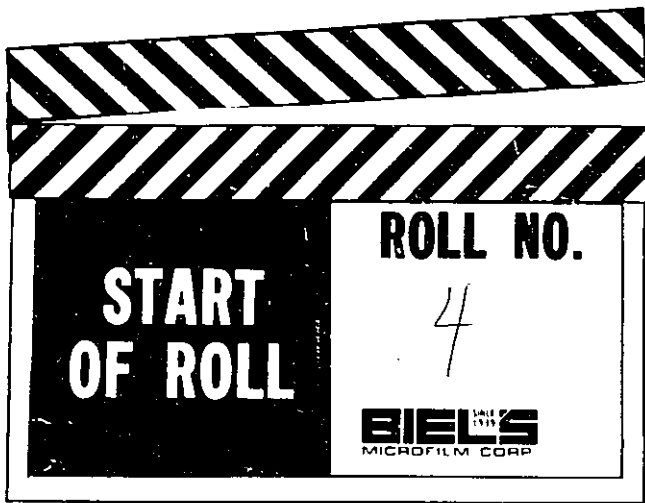
180MM

260MM



**BIELS** SINCE 1933  
MICROFILM CORP.  
1201 INDIAN CHURCH ROAD  
BUFFALO, NEW YORK 14224





CUSTOMER

U.S. District Court

MATERIAL

Index Cards



Deft.

LEVALLEY MCLEOD, INC.

Class# Civ-77-553

Dept.

Closed

Levan, Harold

Civ. 7057

Pfff.

Closed

Levandustein, Joseph A.

Civ. 3459

Deft.

LEVASSEUR, Joseph

Civ-80-149B

(E)

Wayne Guthrie

Pltf.

LEVE, A., M.D.

210506 Civ-77-372



Pltf.

LEVEE, Dorveed

Closed Civ-1973-191

Civ-1973-216

Closed Civ-1973-376

Closed Civ-1973-404

Petr.

LEVEE, JOMO Dorveed

Closed Civ-1974-54

DEFT

10500 CIVIL 81-0011C

LEVEILLE, Peter Wm

CR 80-16

USA

Deft.

LEVENE, GOULDIN & THOMPSON

Civ-78-243

Dept.

Leventhal, Harry

Civ. 1173

Deft.

---

Leventhal, Lizzie

Civ. 1173

Deft

\*LEVENTHAL, Ronald H,

CIV 79-1014

\*Benjamin Slobodin

Plff.

Closed

Leventhal, William J.

Civ. 7135



PLTF

CIVIL 82-48E  
82-49E

IN RE:

Grand Jury Subpoena dated  
December 8, 1981 to

ROBERT M. LeVEQUE  
17 Cumberland,  
Charlottesville, Va.

Deft.

Q. 232

Lever Bros. Co.

Civ. 4801

Plff.

Closed

LeVesque, Christine

Civ. 6561

Deft.

LEVESQUE, J. Louis

Case# Civ-77-643

Pltf.

LE VESQUE, Louis A.

Closed Civ. 10,877

Closed 11,073

PLIFF.

CLOSED

LeVesque, Louis Allen

Civ. 8084

Deft.

LEVESQUE, Pierre-Louis

Closed Civ-77-643

Deft.

LE VESQUE, Rodney Raymond

Closed Civ-1971-29



Closed

Deft.

Levi, Berthold

Div. 2200

Deft.

LEVI, Edward

Closed Civ-75-417

Closed Civ-76-338

Closed Civ-77-30

Deft.

LEVI, Edward H.

Civ-76-548

Dept.

Closed

Levi & Son, M. A.

Civ. 2200

Deft.

Closed 7

Levi, Moses A.

Div. 2200

Deft.

LEVICK, Irving

Closed civ-78-243 4/81

Deft.

LEVICK, Mildred

Civ-78-243

Deft.

LEVICK, Philip

Closed Civ-78-243 4/r/



Pltf.

LEVIN COMPUTER CORPORATION

MiscCiv 79-9

Pltf.

LEVIN, Howard S.

Misc.Civ. 79-9

Deft.

Levin, Isadore B.

Closed

Civ. 2641

Deft.

LEVIN, Jerry

Closed Civ-76-109

Deft.  
LEVIN, Lloyd P.

Closed Civ-74-271E

Deft.  
LEVINE, Abe

Closed Civ-1972-433  
Closed Civ-74-101  
Closed Civ-74-526  
Closed Civ-75-98

Pltf.

LEVINE, Adeline Gordon

Civ-79-585

Closed

Deft.

Closed

Levine, Daniel

Civ. 3156



Pltf.  
LEVINE, David

Closed Civ-1970-430

Deft.

Closed

Levine, Harry

Civ. 9506

Pltf.

LEVINE, Herbert

Closed

Civ-1970-406

Deft.

LEVINE, Judith

Civ-1967-399<sup>Closed</sup>

Deft.

LEVINE, Louis L.

Closed Civ-1971-306

Deft.

LEVINE, Louis L., Industrial  
Commissioner of the State  
of New York

Closea

Civ-75-104

Civ-75-472

Closed

Deft.

Levine, Margaret K.

Civ. 6458

Deft.

LEVINE, Marshall

ClosedCiv-74-151



Pltf.

LEVINE, Max

Closed Civ-1973-111

Closed

Deft.

Lovine, Morris Monk

Civ. 6458

Plff.

Levine, William J.

Closed

Civ. 7478

Pltf.

LEVINGER, Barbara L.

Civ-77-144

Pltf.

LEVINGER, David M.

Civ-77-144

Pltf.

LEVINGER, Donald A.

Civ-77-144

Plff.

Levinger, Ursula H.

Closed Civ. 3563

Closed 3574

Deft.

Closed

Levisohn, Arthur A.

Civ. 2297



Plff.

Levinson, Al

Closed

Civ. 9481

Plff.

Levinson, Alan

212-222  
Civ. 9481

Deft.  
LEVINSON, Diane

Closed Civ-79-491*l*

Deft.

LEVINSON, Maurice S.

Closed Civ-1970-387

Pltf.

LEVINSON, RALPH W.

Closed Civ-75-216

Deft.

LEVINSON, Robert A.

Closed Civ-1968-359

Pltf.

LEVINSON, RUTH L.

Closed Civ-75-216

Deft.

LEVINSON, Sanford

Close<sup>d</sup> Civ-79-491E



Pltf.  
LEVITE, Estelle

Closed Civ-1970-411

Plff.

Closed

Levite, Hyman

Civ. 3862

Plff.

Closed

H. Levite & Son

Civ. 3862

Pltf.

LEVITE, Samuel

Closed Civ-1970-411

Plff.

Closed

Levite, Samuel

Civ. 3862

Deft.  
LEVITT, Arthur

Closed Civ. 10,994

Closed Civ-1969-324

Closed Civ-1970-521

Shuhda Closed Civ-1971-576

Deft.

LEVITT, Arthur, Comptroller of  
the State of New York

Closed Civ-1973-222

Closed Civ-75-480

Closed Civ-77-235

Pltf.

LEVITZ, Ira

Closed Civ-1972-657



Pltf.

LEVITT, Dr. Irving

Misc. Civ-76-119

Deft.

LEVITT, Jack

Misc.Civ.77-114

Pltf.

LEVITZ, Margaret

Closed Civ-1972-657

Pltf.

LEVY, Agnes O. Griffin

Closed CIV-80-451B

Shearson Loeb Rhoades & 1

Plff.

Closed

Levy, Bernard D.

Civ. 9528

Pltf.

LEVY, Bernard S.

Civ-80-916B (e)

Thomas J. Coughlin III  
Harold J. Smith, Warden

Dept.

Class

Levy, Bert

Civ. 226

Doft.

Closed

Levy, Blanche B.

Civ. 4567



Plff.

Closed

Levy, Cecil E.

Div. 4329

Pltf.

LEVY, Chauncey F., Jr., M.D., P.C.

Civ-80-830B

Shearson Loeb Rhoades, Inc.  
Sheldon Hurwitz

Pltf.

LEVY, Chauncey F., as Trustee  
for the Chauncey F. Levy, Jr.,  
M.D., P.C. Employee Retirement  
Plan Trust

Civ-80-830B

Shearson Loeb Rhoades, Inc.  
Sheldon Hurwitz

Pltf.

LEVY, Chauncey F., Jr. as  
Trustee for the Chauncey  
F. Levy, Jr., M.D., P.C.  
Profit Sharing Plan

Civ-80-830B

Shearson Loeb Rhoades, Inc.  
Sheldon Hurwitz

Close

Plff.

Levy, David

Civ. 4399

Dept.

Levy, David

Civ. 7188

Closed

Plff.

Levy, Frank

Civ. 4399

Deft.

LEVY, Harold

Civ-79-894



Class

Plff.

Levy, Harold

Civ. 4399

6481

Deft.

Levy, Harry

Closed

Div. 2818

Plff.

Clas

.. Levy, Ida

Civ. 4399

Pltf  
LEVY, Leo

Civ-82-238B(E)

Deft Roch. Gas & Electric Corp. &  
Westinghouse Electric Corp.

DEFT

CIVIL 81-634C

LEVY, Leo

Ellis Clanton aka Clay Williams

Deft.  
LEVY, Leo S.

Civ-81-93E

Charles Culhane

Deft.

Levy, Mary

Civ. 6785

Deft.

Class

Levy, Max

01v. 375



Plff.

Levy, Mildred

Almond

Civ. 9528

Deft.

Levy, Nathan

Closed

iv. 2818

Deft.

LEVY, Robert M.

Close-Civ-77-103

Plff.

Closed

Levy, Samuel

Civ. 4705

Deft.

Closed

Lovy, Samuel

Civ. 3928

Edell

7188

336522

Class

Deft.

Levy, Sol J.

Civ. 4568

4567

Plff.

Closed

Lewandowska, Gertrude J.

Civ. 3373

Plff.

~~2~~ Closed

Lewandowski, Alfred

Civ. 3319



Plff.

Civ.

Lewandowski, Bronislaw

Civ. 5679

Def t.

LEWANDOWSKI, Chester

Closed civ-78-239C

Pltf

LEWANDOWSKI, Daniel,  
Revenue Officer

Misc. Civ-80-197E

Harold J. Geiger

Pltf.

LEWANDOWSKI, Daniel,  
Revenue Officer

Misc. Civ-80-195E

Wallace Rozewicz

Pltf.

LEWANDOWSKI, Daniel  
Revenue Officer

Misc. Civ-80-199E

Harold J. Geiger

*JTE*

Pltf.  
LEWANDOWSKI, Daniel,  
Revenue Officer

Misc. Civ-80-127

Thomas Panasci

Deft.

Lewandowski, Edwin

Cloned

Civ. 7070

Deft.  
LEWANDOWSKI, John

Closed Civ. 10,532



Flff.

02080d

Lewandowski, John J.

Civ. 7821

Plff.

Lewandowski, Joseph

Closed

Civ. 3373

and  
Closed 10,854

Closed

Plff.

Lewandowski, Max J., Sr.  
Jr.

Civ. 4088

4089

Pltf.  
LEWANDOWSKI, Monica ~~Closed~~ Civ-81-278

The Dow Chemical Company  
Monsanto Co.  
Hercules Incorporated  
Thompson-Hayward Chemical Company  
Diamond Shamrock Corporation  
Wm. T. Thompson, Inc.  
Hoffman-Taft, Inc.  
Uniroyal, Inc.  
Hooker Chemical Company

Deft.

LEWANDOWSKI, Raymond

Civ-1972-325

Closed Civ-75-2

Closed Civ-76-156

Pltf.  
LEWANDOWSKI, Richard <sup>Closed</sup> Civ-81-27B

The Dow Chemical Company  
Monsanto Co.  
Hercules Incorporated  
Thompson-Hayward Chemical Company  
Diamond Shamrock Corporation  
Wm. T. Thompson, Inc.  
Hoffman-Taft, Inc.  
Uniroyal, Inc.  
Hooker Chemical Company

Pltf.

LEWANDOWSKI, Stanley

Closed

Civ-1972-301

Deft.  
LEWANDOWSKI, Rosanne G.

Closed Civ-79-725



Deft.

LEWANDOWSKI, Stanley

Closed

Civ-1970-428

Plff.

Closed

Lewandowski, Stella

Civ. 5564

Plff.

Lewandowski, William V.

Civ. 3235

Dept.

~~Class~~

Lewansowski, Michael

Civ. 170

Deft.

LEWCZYK, Charles

~~Civ-77-340~~  
Civ-79-25

Deft

LEWELLYN, Anna Bell

Closed Civ-1973-284

Deft.

Closed

Lewellyn, Clarence

Civ. 9058

Deft.

LEWELLYN, Hubert Jr.

Closed Civ-1973-284



Deft.

LEWIN, Arthur

Closed Civ-76-445

Deft.

LeWIN, Edith

closed Civ-76-410

Pltf.

LEWIN, Henry H.

ClosedCiv-1973-19

Pltf.

LEWIN, Ruth

Closed Civ-1973-19

Closed

Deft.

Lewis, Ada

Civ. 8879

Deft.

LEWIS, Alan E.

Closed Civ-1973-396B(c)

Deft.

LEWIS, Albert B.

Closed Civ-79-301

Pltf.  
LEWIS, Alfred

Closed Civ-1969-331  
Closed Civ-1970-322  
Closed Civ-1970-380



pltf

LEWIS, Allen

Closed

Civ 79-316

Pltf.

LEWIS, Allan L.

ClosedCiv-75-148

Closed

Plff.

LEWIS, Amelia

Civ. 10,365

Deft.  
I. LEWIS, Andrea

Closed

CIV-79-767

Closed

Deft.

Lewis, Anna

Civ. 7839

Pltf.

Lewis, Arthur

Cloud Civ. 78-471

Dept.

Class

Lewis, Arthur

Civ. 6248

Plff.

Lewis, Carleton K.

Civ. 4094



Pltf.

LEWIS, Clarence, individually  
and on behalf of all others  
similarly situated

Civ-80-843E

Buffalo Municipal Housing Authority, et al.

Pltf.  
LEWIS, Clemmie

Closed Civ-1967-106

Closed Civ-1969-16

Closed Civ-1969-41

Closed Civ-1969-427

Deft.

LEWIS, Correctional Officer

Civ-81-231B(C)

Pltf: Teddy Lewis

Deft.  
LEWIS  
Correction Officer

Closed Civ-1971-174

Pltf.

LEWIS, Debbie

Closed Civ-1970-561

Closed Civ-1971-55

Pltf.

LEWIS, Donald E.

Closed

Civ-1973-396 B

(c)

Deft.

LEWIS, Edgar

Closed Civ-76-149

Deft.  
LEWIS, Edwin

Civ-80-1082E

Buffalo Pipe & Foundry Corp., etc. & 1



Pfff.

Lewis, Ernest

Civ. 6694

Closed

Deft.

LEWIS, Ernest Sr.

d/b/a C & E Contractors

Case Civ-77-497

PLTF

CIVIL 80-1135C

LEWIS, Frank

Frank Festa; Edward Rutkowski; Erie County

Pltf.  
Lewis G. Johnson, Inc.

Civ-80-167  
Civ-80-179

SEE: BK-73-1717  
Bankruptcy Appeal

James B. Doyle, as Trustee of Beverage  
Transport, Inc.

Pltf.  
Lewis G. Johnson, Inc.

Civ-80-177

James B. Doyle

Deft.

Lewis G. Johnson, Inc.

Civ-80-197

SEE: BK-73-1717

James B. Doyle, Trustee of Beverage Transport,  
Inc.

Pfff.

Closed

LEWIS GENERAL TIRES, INC.

Civ. 10,348

Deft.

LEWIS GENERAL TIRES,  
INCORPORATED

Closed Civ-76-541



Plff.

Closed

Lewis, Harold G.

Civ. 584

Deft.

LEWIS, Herbert J.

Civ-76-376

Deft.

LEWIS, James L. Jr.

Closed Div.-1966-20

Plff.

Closed

Lewis, John D.

Civ. 6246

Closed

Deft.

Lewis, John Sheldon

Civ. 7071

Deft.  
LEWIS, June P.

Closed

Civ-80-1076B

BK NO. 80-20551  
AP NO. 80-2116A

Marine Midland Bank, N.A.

Deft.  
LEWIS, Kenneth  
(Sec 8432-C)

Closed Civ. 10,823

Meyer Closed 11,565

Deft.

LEWIS, Leon E. Jr.

Closed Civ 1973-396 B  
(c)



Deft.

LEWIS, Leon E. Sr.

Closed Civ-1973-396

*B*  
*(c)*

DEFT

CIVIL 81-551E

LEWIS, Lucy

Camille Griffin

Closed

Plff.

Lewis, Mabel V.

Civ. 4095

Deft.

Lewis Machine Company

Civ-80-620C

John A. Smagner & 1

Deft.

LEWIS, Mark A.

*Closed* Civ-81-644B(C)

Pltf. U.S.A.

Deft.

LEWIS, Martin L.

Close Civ-78-257

Pltf.

Civ-81-393B(E)

(Case)

LEWIS, Marvin K., as spouse of Patricia A. Lewis  
jointly and severally

American Can Company  
William J. Colbert

Deft.  
LEWIS, Mary

Closed Civ-79-699E



Deft.

---

Mary A. Lewis Estate

Civ. 1048

Plff.

Closed

Lewis, Mary J.

Civ. 583

Plff.

Closed

Lewis, Merton E.

Civ. 3459

Pltf.

LEWIS, Michael

Closed Civ-1971-507

closed

Dept.

Lewis, Naron F.

Civ. 7081

Pltf.

LEWIS, Patricia A.

Civ-81-393B)E

*Gross*

American Cab Company  
William J. Colbert

Pltf,  
LEWIS, R. C.

Civ-1970-28Closed

Pltf.

LEWIS, Richard

Closed Civ-1970-561

Closed Civ-1971-55



Deft.  
LEWIS, Richard, Jr.

Closed

Civ-80-1076B

BK NO. 80-20551  
AP NO. 80-2116A

Marine Midland Bank, N.A.

Deft.

LEWIS, Richard E., Sr.

Closed Civ-1973-396

(e)

B

Deft.

LEWIS, Officer Richard J. Closed Civ-1969-110

Plff.

Class

Lewis, Robert C.

Civ. 4955

Pltf.

LEWIS, Robert Cass

Closed Civ-74-110

Deft

LEWIS, Robert H.

Closed Civ 79-285

Pltf.

Lewis, Sally (as administratrix  
of the estate of Henry Lewis)

Closed Civ. 78-412E

PLTF

CIVIL 81-175C

LEWIS, Sammie

Harold J. Smith



Deft.

LEWIS, Sandra

Closed Civ-75-451

Pltf.

LEWIS, Shirley, individually  
and on behalf of all others  
similarly situated

Civ-80-843E

Buffalo Municipal Housing Authority, et al.

Deft.

LEWIS, Stephen, Captain, <sup>Closed</sup> Civ-80-873C  
Commanding Officer, U.S.  
Army Recruiting

David E. Mack, etc.

Pltf.  
LEWIS, Teddy

Civ-81-231B (c)

Thomas A. Coughlin, III etc.  
John B. Wilmot, etc.  
R. Lofstrom, etc.  
Devlin, etc.

Pltf.  
LEWIS, Teddy Shabazz

Civ-81-728C

Thomas A. Coughlin, etc., etal.

Ptff.

LEWIS, Thomas

Closed Civ-1973-290

Pltf.

LEWIS, Tracy

Closed Civ-1970-561

Closed Civ-1971-55

Pltf.  
LEWIS, Thomas

Closed Civ-1971-192

Closed Civ-1971-237

Closed Civ-1970-539



Plt f.

LEWIS, Una Franklin

Closed

Civ-75-148

Deft.

THE LEWIS WELDING &  
ENGINEERING CORPORATION

Closed

Civ-1969-396

Deft.  
LEWIS, Wendell A.

Classified - 79-699 E

Deft.

217002

Lewis, William H.

Civ. 7839

Deft.  
LEWIS, Willie J.

Civ-81-937B(E)

Pltf. U.S.A.

Pltf.  
LEWIS, Zoe

Closed Civ-1970-561  
Closed Civ-1971-55

Deft.

(2)

Lewiston, N. Y., town of-1.2 acres land- Div. 1179

5.27 " Closed 7223

138356 " Closed 7934

Deft.

---

Lewiston, N. Y., town of -	Div. 977
Certain tracts land	Closed 992
	Closed 999
	1008
	1009
	1023
	Closed 1025
	1063
	1085
	Closed 1073



Deft.

Lewiston, N.Y. Village of

US

4356 Closed

US

4614 Closed

Pltf.

LEWISTON, Town of

Closed CIV-78-579

Deft.

Closed

Lewiston & Youngstown Frontier Ry. Co.

Closed

Div. 1063

1023

1273

1274

Plff.

Closed

Lewitz, Edward John

Civ. 4659

Plff.

Lewkuc, John

Civ. 3260

Pltf

MISC CIV 84-100

LEWMAN, CHARLES H.

Deft Shopsmith, Inc., et al

PLTF.

LEXICON MUSIC INC.

~~Class~~ CIV. 78-750

Pltf.  
LEYDA, Larry F.

Closed

Civ. 11,151

Closed 11,205



Closed

Plff.

Leydecker, Fred J.

Civ. 4051

Deft.

LEYDEN, J. Paul

Case# Civ-75-78

Dept.

Leyh, Henry Otto

Giv. 1359

Deft.

LEYLAND, George

Civ-80-171

B

(C)

C. H. Stuart, etc.

Deft.

LEYLEGIAN, George

Closed

Civ. 11,351

Deft.

LI, Dr. Johnny T.

ClosedCiv-77-663

Deft:  
LIANG, Shwu-Jian

Closed

Civ-81-992B (E)

Pltf: Xerox Corporation

Deft  
LIBBEY-OWENS-FORD COMPANY & 1

MISC CIV 83-51

Pltf Power Draulics-Nielsen, Inc.



Deft.

Libby, Jerald Mrs.

Civ. 4242

Deft.

LIBBY, McNEILL & LIBBY

Closed Civ-1967-362

Pltf.

LIBERANTE, Louis J.

Closed Civ-75-33

Deft.

Closed

Liberati, Giuseppe

Civ. 178

Pltf.

LIBERATOR, Victor

ClosedCiv-1973-540

Plff.

Closed

Liberatore, Angelo

Civ. 4598

Deft.

LIBERATORE, Carole

ClosedCiv-77-696

Deft.

LIBERATORE, Charles L.

Civ-81-847B(C)

Pltf: U.S.A.



Deft.

Liberatore, Daniel J.

Civ. 9245

Deft.

LIBERATORE, Ralph J.

Closed Civ-77-696

Deft.  
LIBERATORE, Victor

Closed Civ-80-337

Angel Wing Music, et al.

Deft.

LIBERMAN, Edgar & Irene

Civ-80-187

CLOSED

SEE: BK-77-2734

Rochester Midtown Pharmacy, Inc.

DEFT

CIVIL 80-188

LIBERMAN, Edgar & Irene

**CLOSED**

*1377-2733*

469 Monroe Pharmacy, Inc.

Deft.

LIBERTSON, Dr. William

Civ-77-135

Closed

Plff.

Liberty Bank of Buffalo

Civ. 5676

(2)

Deft.

Liberty Bank of Buffalo - Fischer

Civ. 9775



Deft.

Closed

Liberty Bank of Buffalo

Civ. 283

Lumbermen's Ons.-

3754

Ettoh

3790

"

Closed

3789

"

3791

"

3792

Miceli

3860

Deft.

---

Liberty Bank & Trust Co. -Citizens	Civ. 9674
"	9675
"	9676
"	9679
"	9680
"	9766

closed  
closed

Plff.

Liberty Broadcasting System, Inc. - Civ. 5055

Closed

Deft.

Liberty Clothing & Shoe Corp.

Civ. 1667

Deft.

Liberty Loan Co., Inc.

Closed Civ-79-456

Deft.

61089C

Liberty Mission Baptist Church

Civ. 6994

Deft.

LIBERTY MISSIONARY BAPTIST CHURCH

~~Closed~~

CIV-1966-162

Dept.

Liberty Motor Freight Lines, Inc. ~~910000~~ Civ. 8984  
9156



Deft.

Closed

Liberty Mutual Fire Insurance Co.

Civ. 8545

Deft.

Liberty Mutual Insurance Co.

Civ-81-55E

Regional Container Corp.

Deft.

LIBERTY MUTUAL INSURANCE COMPANY

Case# Civ-78-29

DEFT

MISC CIV 82-36E  
82-43E

Liberty National Bank, custodian of  
record per. Charles R. Anderson  
Matthew J. Anderson

USA + 1

LIBERTY National Bank  
and Evelyn M. Gibb

Misc.Civ. 81-225

U.S.A. & Revenue Ofcr Krysztof

LIBERTY National Bank & Misc.Civ. 81-188  
Trust Company  
(Richard M. Metschl)

U.S.A. & Revenue Ofcr Bloomquist

DEFT

MISC CIV 83-29-317C

LIBERTY NATIONAL BANK & TRUST CO. 83-317C  
(Custodian of records: Raymond  
Moreland)

USA + 1

Deft.

LIBERTY NATIONAL BANK AND ~~TRUST~~ CIV-81-588E  
TRUST COMPANY

Pltf. William E. Lawson etc.



Deft

Misc Civ 80-56

LIBERTY NATIONAL BANK  
(Custodian of records per to Robert & Karen  
Moser)

USA & IRS

Deft.

Liberty National Bank and  
Trust Company

Closed

Civ-80-1080E

United States of America

Pltf.

Misc.Civ. 81-98

LIBERTY NATIONAL BANK AND  
TRUST COMPANY

DEFT

Closed CIVIL 80-1058C

LIBERTY NATION BANK & TRUST CO.

Irving Becker, Jr.  
Robert A. Kay

Deft

Misc Civ 80-22

LIBERTY NATIONAL BANK & TRUST  
(custodian of records for Bruce & Beth Tubin)

USA & IRS

DEFT

Misc Civ 80-234C

Liberty National Bank & Trust  
& Richard Kawa

USA & Spec Agt James Otwell

Deft.

Liberty National Bank and **Closed** Civ-80-969E  
Trust Company

United States of America

Deft.

LIBERTY NATIONAL BANK & TRUST  
CO.

Civ-78-243

Misc.Civ-79-124



Deft.

LIBERTY NATIONAL BANK AND  
TRUST COMPANY

Closed

Civ-1968-225

Closed

U.S.

Civ-1971-293

Closed

U.S.

Civ-1971-435

Closed

Civ-1972-553

Closed

Civ-78-29

Misc.Civ.79-72

Misc.Civ-79-101

**Pltf.**

**LIBERTY NATIONAL BANK AND TRUST COMPANY**

**Closed Civ-1970-127**

**Closed Civ-75-465**

**Closed Civ-76-243**

Deft.

LIBERTY NATIONAL BANK & TRUST CO.

Closed

CIV-79-362

Deft.

LIBERTY MUTUAL INSURANCE COMPANY ~~ed~~ Civ-1967-308

~~Closed~~ Civ-1968-61

Closed Civ-1970-176

Civ-78-29

Deft.

LIBERTY PETROLEUM CORPORATION <sup>closed</sup> Civ-1973-182

Dept.

Class

Liberty Share Corp.

Div. 283

Deft.

Closed

LIBERTY STEEL CHEST CORPORATION      Civ. 10,944

Pltf.

LIBERTY TOOL & DIE CORP.

070800 Civ-1969-300



Deft.

LIB-MAC CONSTRUCTION COMPANY,  
INC.

Closed Civ-77-696

Deft.  
LIBORDI, Frank

C1050 Civ-1968-357

Deft.

Closed

LiBrize, Frances

Civ. 2597

Closed

Deft.

LiBrize, James

Civ. 2897

Deft.

Closed

LiBrize, James J.

Civ. 3907

Pitf.

LICATA, Frank

closed Civ-76-189

Plff.

Class

Licata, James

Civ. 6015

Deft.

LICATA, Thomas

Closed Civ-76-396



Deft.

LICENSED TUGMEN'S & PILOTS  
PROTECTIVE ASSOCIATION OF  
AMERICA

Closed

Civ-1968-8

PLTF

CIVIL 81-677C

LICHT, Donald A.

James Cunningham, Commissioner of Police  
Kenneth Kennedy, Chief, Vice Bureau  
Edward Cosgrove, D.A. Erie County  
Robert Abrams, Atty Gen, NYS

9  
Deft.

LICHTER, David S.

-----od  
Civ-75-534

Plff.

Closed

Lichter, Jacob

Civ. 8434

pltf

LICKERS Alice A

Closed Civ 79 - 120 E

pltf.

LICKERS, Howard L.Jr., Closed Civ 79 - 120 E

Plff.

closed

Lichters Jennie L.

Civ. 8434

Plff.

Closed

Liddell, Carl

Civ. 3373



DEFT

CIVIL 80-290

LIDDELL, Donald M.

M. Gever; T. Purdy; C. Schlemowitz;  
C. Tumber & D. Vail

Deft.

LIDDELL, Kenneth

Case# Civ-75-449

Deft.

LIDDELL, William C.

Closed Civ-74-112

Deft.

LIDDIE, Leonard A.

Closed Civ-80-610E

United States of America

972  
Deft.

LIDDY, Donald E.

Class Civ-75-91

Deft.

Closed

Liddy, Leonore S.

- Witmark  
Feist

Civ. 1127  
" 1128

Deft.  
LIDGE, Norman

Closed: Civ-80-468 E

United States of America

Pltf.

LIEBECK, Madeline Hall

Closed Civ-77-1



Deft.

Flora Civ. 78-393

Lieber, Peter D.

~~Civ. 450~~

Dept.

Lieberman, I.

Civ. 450

Pltf.

LIEBLER, Gerald

Closed Civ-1972-573

deft

LIEBNER, James P

Civ 79 - 124

Pltf.  
LIEBSCHER, Clarence

Civ-82-196C

Deft. Exchange Oil & Gas, Inc. & 1

Pitf.

LIEDTKE, Arthur F.

Closed Civ-75-327

Plff.

~~Closed~~

Liefer, Charles Edward

Civ. 3344

Deft

CIVIL 80-763C

LIEPPOLD, 'John' (1st name unk)

Harold Konigsberg



DEFT

~~Closed~~ CIVIL 81-349C

LIERMO, Gerardo

USA

Plff.

Letch, Donald P.

Calv. 3312

Pltf.

LIFE LINE AMBULANCE SERVICE, INC.

Civ-78-239

Deft.

Life O'Wood \*\*\* Polish

ClosedCiv-1973-254

Deft.

Closed

Life, Rosa Lea

Civ. 8980

Plff.

Closed

Lifetime Siding Inc.

Civ. 9278

USA

10,956 Closed

11,028 Closed

Pltf.

LIFFITON, Jack D.

Civ-80-940C

Closed

Nelson Blocher, etc. & 1

Deft.

LIFT PARTS MFG., INC.

closed

Civ-1969-477



Pltf.

LIFT PARTS OF BUFFALO, INC. <sup>Closed</sup>  
(now J.A.R. Liquidating Corp.)

Civ-1969-477

Deft.

LIGAMMARI, Alfred

Civ-74-546

Deft.

Closing

Lightcap, Sam

Civ. 5217

Plff.

Closed

Lightner, Joseph

Civ. 8175

Plff.

⌘ Closed

Ligiecki, John

Div. 745

Pltf.

LIGNOS, Dimitrious J.

Closed

Civ-1968-88

Pltf.  
LIGNOS, Evelyn

Closed Civ-1968-88

Plff.

Lignos, Kostas

Div. 645



Closed

Deft.

Lignos, Nicholas

Civ. 7829

Plff.

Closed

Lignos, Pantellis

Civ. 1414

Deft.  
LIL, Raymond

Closed Civ-1966-249

Deft.

LILAC TIME OF ROCHESTER, INC. Closed CIV-1973-46

Pltf.

LILIENTHAL, Robert C.

Closed Civ-1973-417

DEFT

CIVIL 82-297E

LILL, James

James J. Willis, Jr., et al

DEFT

CIVIL 82-297E

LILL, James M.

James J. Willis, Jr., et al

DEFT

CIVIL 82-297E

LILL, James M., Jr.

James J. Willism Jr., et al



DEFT

CIVIL 82-297E

LILL, Kevin L.

James J. Willis, Jr et al

~~Closed~~

Plff.

Lill, Ralph

Civ. 7665

Pltf.  
LILL, Ralph M.

Closed Civ-1969-13

Deft.  
LILL, Ray

Civ-77-135

DEFT

CIVIL 82-297E

LILL, William T.

James J. Willis, Jr., et al

Plff.

Lilley, Donald Thomas

Civ. 3235

Deft.

Closed

Lilley, Edna

Civ. 3357

Pltf.

Civ. 450

Lillien, I.

Civ. 450



Dept.

Class

Lillien, Isadore

Div. 450

Plff.

---

Lillion, George J.

Civ. 3257

Deft.  
LILLIS, Henry

Civ-81-1018B(C)

Pltf. Wilmac Business Equipment Company

Plff.

Closed

Lillis, James

Civ. 3812

pltf

LILLIS, Maurice P

Close@iv 79-184

Deft.  
LILLY, Viola

Closed Civ-1968-151

Deft.

Closed

Lilly, Viola B.

Civ. 6994

Deft.  
LILLY, William

028 - Civ-1968-151



Pltf.

LILY, Bob

Closed: Civ-78-194

Closed

Deft.

Lily, Helen

Civ. 1310

Plff.

Closed

Lima, Alice

Civ. 10.040

Deft.

Closed

Lima Beans, 127 bags

Civ. 8152

Flff.

~~Closed~~

Lima, Kenneth

Civ. 10,041

Deft.

Lima Locomotive Works, Inc.      Closed      Civ. 2704

Plff.

Lima, Marion

Civ. 10,040

10,041

Deft.

LIMAN, Arthur

Closed Civ-1971-576



Deft.

LIMBER ADVERTISING, LTD.

Misc.Civ.76-3

Dept.

Closed

Limbo, Inc.

Civ/ 5458

Deft.

Closed

Limburg, Betty

Civ. 9859

Deft.

Limburg, Elizabeth

Civ. 9676

9674

Deft.

Closed

Limburg, Walter

-Citizens

Civ. 9676

"

~~Closed~~ 9674

"

~~Closed~~ 9675

"

~~Closed~~ 9679

"

~~Closed~~ 9680

"

~~Closed~~ 9766

Deft.  
LIMCO IMPORTERS, INC.

Case No. Civ. 11,792

Deft.

Closed

F. Limeri & Son

Div. 2092

Deft.

Limeri, Frank

Closed

Civ. 2092



Deft.

Limeri, John

Closed Civ. 2875

Deft.

Limeri, Joseph

Closed

Closed Civ. 2875  
11,792

Deft.

Closed

Limeri, Joseph J.

Civ. 2092

Deft.

Closed

P. Limeri & Son

Civ. 2092

Deft.

---

Linner, Gertrude Bannen

Civ. 766

Deft.

LIMUTI, Albert J.

Closed

Civ. 10,404

Pltf.

LIN, Lillian L.

Closed Civ-77-619

Closed

Deft.

Linaker, John

Civ. 1049



Plff.

Closed

Lincoln-Alliance Bank & Trust Co.  
McGowan

Civ. 237  
321  
657

Class 4

Deft.

Lincoln Capri-Convertible, 1950, Motor # 55 WA 9651 H,  
NY State License 6E 7455 NY 1956 - Civ. 7099

Closed

Deft.

Lincoln Contracting Co.

Civ. 3025

Deft.

01000

Lincoln Courts Inc.

Civ. 7782

Deft

Misc Civ 82-82B(E)

LINCOLN FIRST BANK, N.A. & 1

Pltf

USA & 1

Deft

Misc Civ 82-27B(C)

LINCOLN FIRST BANK,  
Custodian of records pertaining  
to RITA D. BALCONI

Pltf USA & 1

Pltf.

LINCOLN FIRST BANK, N.A.

Civ-81-888B(E)

Deft: Albert Tomei

Deft.  
LINCOLN FIRST BANK

Closed Civ-80-1005B

U.S.A.



Deft.

Lincoln First Bank N.A.

Closed Civ-79-589

U.S.A.

Deft.

LINCOLN FIRST BANK OF ROCHESTER

Closed

Civ-79-34

Deft.

LINCOLN FIRST BANK

Misc.Civ. 80-134

Pltf:

U.S.A. & Joseph F. CHORAZAK,  
Special Agt of IRS

Deft.

LINCOLN FIRST BANK

Misc.Civ.78-117

Deft.  
Lincoln First Bank, N.A.

Closed Civ-80-489 E

United States of America

Deft

Civ-81-181B (f)

LINCOLN FIRST BANK - CENTRAL NATIONAL  
ASSOCIATION

Manufacturers Hanover Trust Co.

Deft.

LINCOLN FIRST BANKS INCORPORATED

Close

Civ-74-400

Pltf

LINCOLN FIRST BANK, N.A. Closed Civ-81-735B(C)

Deft: Louis A. Miraglia & 2



Deft.

LINCOLN FIRST BANK OF ROCHESTER

Misc.Civ. 81-119B(E)

Pltf: U.S.A. & 1

Deft. Closed  
LINCOLN FIRST BANK OF ROCHESTER Civ-80-1144B

U.S.A.

DEFT

Misc Civ 80-233C

Lincoln First Bank of Rochester  
& Beatrice Reyes

USA & Spec Agt James Otwell

Deft.

LINCOLN FIRST BANK OF  
ROCHESTER,

Civ-81-738B(E)

Pltf: U.S.A.

Deft.

Misc Civ-80-247B

LINCOLN FIRST BANK OF ROCHESTER

U.S.A. & William R. Schirmer, etc.

Deft.

LINCOLN FIRST BANK OF ROCHESTER

Closed Civ-79-251

Closed Civ-79-538

Misc. Civ. 79-<sup>157</sup>~~139~~

Closed CIV-79-136

Pltf.

LINCOLN FIRST BANK OF  
ROCHESTER

~~Civ-77-563~~

~~Civ 77-564~~

~~Civ-77-565~~

Deft.

LINCOLN FIRST BANK OF  
ROCHESTER

Closed Civ-77-553

Closed Civ-78-782



Deft.

Civ-81-431B(C)

LINCOLN FIRST BANK OF ROCHESTER

U.S.A.

DEFT

**CLOSED**

CIVIL 80-188

LINCOLN 1ST BANK OF ROCHESTER

*B 77-2733*

469 Monroe Pharmacy, Inc.

Pltf.

LINCOLN FIRST BANK-ROCHESTER

Closed Civ-1973-106

Closed Civ-1973-459

~~Civ-1978-579~~

Closed Civ-78-178

Closed Civ-78-598

Deft.

LINCOLN FIRST BANK OF ROCHESTER

~~Closed~~ Civ-1973-573 8

~~Closed~~ Civ-74-189

~~Closed~~ Civ-74-245

~~Closed~~ Civ-76-161

~~Closed~~ Civ-76-404

~~Closed~~ Civ-76-407

~~Closed~~ Civ-76-513

Civ-77-468

Civ-78-288

Closed Civ-77-478

Dept.

Lincoln Junk Co.

Div. 1777

Dept.

LINCOLN LEASING CORPORATION

Misc.Civ.76-3

Deft.

(ONE 1977) LINCOLN MARK V,

Closed CW-79-151

Plff.

Lincoln, Miles E.

Civ. 6859



Deft.

LINCOLN NATIONAL BANK

Closed Civ-1967-25

Closed Civ-1970-87

Deft  
THE LINCOLN NATIONAL LIFE  
INSURANCE COMPANY

Civ-81-1028B(E)

Plft THE COMMUNITY SAVINGS BANK

Deft.

LINCOLN NATIONAL BANK AND  
TRUST COMPANY OF CENTRAL  
NEW YORK

Closed

Civ. 11,842

Pltf.

LINCOLN, Niles

77-628  
Civ-77-628

Deft.

LINCOLN ROCHESTER BANK  
AMERICARD

Closed Civ-77-525

Deft. Closed  
LINCOLN ROCHESTER TRUST COMPANY Civ-80-1005B

U.S.A.

Deft.

LINCOLN ROCHESTER TRUST COMPANY

Closed Civ-74-378

Deft.

Closed

Lincoln Rochester Trust Co. Civ. 4536  
Closed Civ-1967-53  
Closed Civ. 10,730  
Closed Civ-1968-84  
Closed Civ-1969-406  
USAClosed Civ-1970-391  
Closed Civ-1970-499  
USA Closed Civ-1972-446  
USA Closed Civ-74-313



Plff.

Closed

Lincoln Rochester Trust Co.

Civ. 5170

McGowan

Closed 6097

U. S.

Closed

7510

Pltf.

LINCOLN ROCHESTER TRUST COMPANY

Civ-1973-106

Deft.

Closed

Lincoln Stpres, Inc.

Civ. 3852

Deft.

LINCOLN SUPPLY CO.

~~closed~~

Civ. 10,373

Deft.

LINCOLN THRIFT ASSOCIATION

Misc.Civ.76-3

Deft.

LINDAHL, Mrs. Thelma

010800 Civ. 10,792

3rd Party Deft.  
LINDAU, Philip

Civ-81-225E

John R. Burgess

Deft.  
LINDAUM, LTD.

Civ-81-1009C

Pltf. Savin Corporation



Pltf.

LINDBURG, Anne L.

..  
Closed Civ-77-624

Deft.

LINDBURG, Christopher K.

Closed Civ-77-624

Deft.

LINDBURG, Mary A.

ClosedCiv-77-624

Pltf.

LINDELL, R. Revenue Officer      Misc. Civ-80-232E

Louis S. Cannizzaro d/b/a Smugglers Inn

Deft.

LINDEN, Jack, United States Probation Officer

closed Civ-76-494

Deft.

Lindenbaum, Simon

Closed

Civ. 2782

Closed

Deft.

Lindenberg, H. C.

Civ. 1060

Pltf.

LINDER, Jeffrey Estate of

Civ-1973-509



Plff.

Linder, Leonard

Civ. 3235

Pltf.  
LINDER, Richard

Closed Civ-1970-293

Deft.

Crossed

Linder, Wardell

Civ. 8881

Deft.

Closed

Linderoth, Rodney C.

Civ. 8377

Dept.

Closed Y

Lindholm, Alric O.

Civ. 540

Deft.

Closed

Lindholm, Earl R.

Civ. 9704

Closed

Deft.

Lindie, Raymond

Civ. 922

Plff.

Lindner, Albert P.

Civ. 3235



Plff.

Closed

Lindner, George

Civ. 6816

Plff.

Closed

Lindner, Mary C.

Civ. 6816

Plff.

Closed

Lindner, Martin J.

Civ. 9112

Pltf.

LINDOW, Frances Lillian

Closed

Civ. 10,814

Deft.

8 Closed

Lindow Lumber Co., R. V.

Civ. 2841

Closed

Deft.

Lindow, Ray V.

Civ. 2841

Deft.

Lindquist, Alex.

Civ. 1354

Deft.

LINDQUIST, Ted

Closed

Civ-1970-347



Deft.

LINDQUIST, William C.

Civ-80-261

Kathleen M. Diggs

Defts

Misc Civ-82-70

LINDSAY, Daniel T. et al

Pltfs Pabst Brewing Co. & Wm F. Smith Jr.

Pltf.  
LINDSAY, George

Closed

Civ. 11,764

Pltf.

LINDSAY, James B.

Closed civ-1971-487C

Dept.

Class

Lindsay, Richard C.

Civ. 5603

Plff.

Closed

Lindsey, Ethel Inez

Civ. 3344

Plff.

LINDSEY, Joseph A.

Closed

Civ. 10,641

Deft.  
LINDSEY, Joseph W., Jr. *Closed* Civ-81-156B

U.S.A.



13  
Plff.

Closed

Lindsey, Judge W.

Civ. 8761

Deft.

LINDSEY, Norman C.

MiscCiv-76-111

Deft.

LINDSTROM, Frank A.

Closed<sup>d</sup>Civ-76-503

Deft.

LINDSTROM, Hazel J.

Closed Civ-76-503

Piff.

Closed

Line, Francis T.

Civ. 5281

Deft.

Closed

Linehan, Marian F.

Civ. 3865

Plff.

Closed

Linehan, Mary M.

Civ. 3865

Deft.

Linen Handkerchiefs, 991 doz. Closed Civ. 11,639

Linen Dinner & Luncheon Sets Closed 11,640

Linens, Embroidered, 53 bales Closed Civ-1968-242



Deft.

LINES, Bradley T., Member of the  
Board of Education, Individually  
and in his official capacity

Civ-80-1081B

(E)

Eleanor Belliotti

Dept.

Closed

Ling, George M.

Civ. 1935

PLTF

CIVIL 80-1089C

LING, James C; Shannon K; & James M.

Dow Chemical, etal

Deft.

LINGENFELTER, Gerald C.

Closed

Civ-1968-333

Deft.

Closed

Linger, Scott A.

Civ. 4611

Pltf.

LINKHORST, Barbara Jean

ClosedCiv-75-3

Dept.

Class

Linn Coach & Truck Division

Civ. 4641

Deft.

Closed

LINNE, George W.

Civ. 10,337



Deft.

Closed

Linquest, M.

01v. 2008

~~Closed~~

Deft.

Linscott, Arthur P.

Civ. 5449

5450

LINSCOTT, Ernest P.

Mag. 78 Misc. 37M

CIVIL re penal sentence of Canada,  
however, papers may be found in  
care of Criminal Deputy.

Deft.      Closed

Civ-78-722B(E)

LINTHICUM, Allan

Diane Villescaz, etc.

Deft.            Closed  
LINTHICUM, Lee, Jr.

Civ-78-722B(E)

Diane Villescaz, etc.

Deft.

Closed

Civ-78-722B(E)

LINTHICUM, Lee, Sr.

Diane Villescaz, etc.

Deft.

LINTON, John M.

Closed Cvi-79-887c

Pltf.

LINTON, Leomia R.

Closed Civ-79-349

SEE B-78-1435



CIVIL

Plff.

Linwood Nursing Home

Civ. 5312

Deft.

LINZA, Peter

Civ-1966-241

Deft.

Civ. 5964

Linzy, Devos C.

Civ. 5964

Dept.

Class

Linzy, Emily L.

Civ. 5964

Deft.

LIONEL LEISURE, INC.

Misc, Civ. 76-116

closed

Flff.

Lipari, John R.

Civ. 9647

Closed

Deft.

Lipford, Ethel M.

Civ. 4309

Deft.

Closed

Lipford, Harry B.

Civ. 4309



Pltf.

LIPFORD, Randall C.

Closed

Civ-1970-463

Pltf.

LIPINCZYK, Charles A.

a/k/a ROBERT GEORGE WERNER

02-1583  
Closed Civ. 10,834

Plff.

Closed

Lipinsky, Theophil

Civ. 8847

deft

KENNETH LIPKE

MISC CIV 78-6,7

Pltf.

LIPMAN, Dennis

Closed Civ-77-664E

Pltf.

LIPNIARSKI, Thaddeus A., Jr. Closed Civ-1972-324

Deft.

LIPOMI, Marietta Sue

Closed Civ-75-348

Pltf.

LIPOMI, Marietta Sue

Closed Civ-1973-228



Deft:

LIPP, Clarence J.

Closed Civ-1969-256

Deft.

LIPP, Nelson A.

Closed Civ-1969-256

Pltf.

LIPPA, Patrick V.

Closed Civ-78-698

Pltf.  
LIPPA, Joseph

*Closed*  
*12/81*

Civ-1972-555

Deft.  
LIPPERT, James

Misc.Civ.-81-209B(C)

Pltf: U.S.A. & 1

Daft.

Lippas Bakeries

Civ. 8952

Closed

Deft/

Hippes Bakeries Inc.

Civ. 8952

Deft.

Closed

Lippons, Ray

Div. 1608



Pltf.

LIPPES, Richard

Closed Civ-1971-439

Pltf.

LIPPES, Thomas

Closed Civ-1971-439

Pltf.

LIPPKE, Charles E.

Closed Civ-1970-407

Pltt.

LIPPKE, Elinor

Closed Civ-1970-407

DEFT

MISC CIV 81-24C

LIPPMAN, Lawrence G.

USA

DEFT

CIVIL 82-311E

LIPPOLD, A.

Donald Jermosen

Deft.

LIPPOLD, A., Lt. Adjustment  
Committee Chairman of A.C.F.

Civ-82-287QE

Pltf. Donald R. Jermosen

Def't  
LT. LIPPOLD

Civ-82-257B(E)

Pltf     Gaetano Flores



Deft  
LIPPOLD, etc

Civ-82-34B(C)

Pltf Johnny Muldrow & Michael Taylor

Deft

LIPPOLD, A. (Lieutenant)

Civ-82-27B(E)

Pltf: Larry Holmes

DEFT

CIVIL 81-974E

LIPPOLD, A., Chairman, Adjustment Committee,

Donald Jermosen

DEFT

CIVIL 82-10E

LIPPOLD, Lt. A.

Donald Jermosen

DEFT

CIVIL 81-359C

LIPPOLD, Lt., Adjustment Committee

Johnny Muldrow

DEFT

CIVIL 81-949E

LIPPOLD, A. Lt., Chairman of the Adjustment Comm.

Donald Jermosen

Deft.

LIPPOLD, Alfred, Lt.

Civ-81-435E

Ortez G. Rodriguez

Deft.

LIPPOLD, Lt., Adjustment  
Committee Chairman

Civ-81-172E

Donald R. Jermosen



DEFT

CIVIL 80-382

jtc

LIPPOLD, A., LT.

Angelo Hernandez

Deft.

LIPPOLD, A. Lt.

Close#Civ-77-262

Deft.  
LIPPOLD, A., LT

*JTE*  
Civ-80-373

George Arce

DEFT

CIVIL 80-358

JTC

LIPPOLD, A., Lt.

Abdul Yasin Salahuddin

DEFT

CIVIL 81-893C

LIPPOLD, Richard W., as Bflo Area Mgr,  
Region II, of U.S. Dept of HUD

Bills Riverway Realty, Inc., et. al.

Deft.

LIPPOLE, Lt.

Case Civ-75-545

Deft.

LIPPORD, Lt. of Attica  
Corr. Fac. of N.Y.

Civ-81-771C

Pltf.: Jesse Hammock  
Anthony Holliday

Deft.

LIPPORD, Lt. A.

Civ-81-664E

Pltf: Donald R. Jermosen



Deft.  
LIPPS, Paul

Closed Civ-1969-309

Deft.

Closed

Lipton, David

Civ. 5331

Plff.

Closed

Lipowitz, Rose

Civ. 4926

Deft.

~~Closed~~

Lippa, Concezio

Civ. 4199

Closed

Dept.

Lippman, Ann

Civ. 3014

Pltf.

LIPSCOMB, John H.

Civ-81-838B(E)

Deft: Sec. of Dept. of Health & Social Service

PLCC.

Closed

Lipscomb, Robert E.

Civ. 6633

-- Closed

Plff.

Lipsett, Margaret M.

Div. 2252



Deft.

LIPSHIE, Burton N.

Closed

Civ-1971-54

Dept.

Closed

Lipshultz, Jacob

Civ. 2867

DEFT

Misc Civ 82-195E

LIPSITZ, GREEN, FAHRINGER, ROLL, SCHULLER  
AND JAMES, A Partnership and  
PAUL J. CAMBRIA, JR., member of Firm

USA\* 1

Deft.

LIPSHUTZ, MACEY, ZUSMANN  
& Sikes, Attys.

Misc.Civ.76-37

Deft.

closed

Lipsitz, Barry

Civ. 8520

Pltf.  
LIPSITZ, Penny

Closed Civ-1970-120

Def't.

LIPSKI, Hon. P. Alex

Closed Civ-1969-42

Deft.

Closed

Archie Lipsky, Inc.

Civ. 1438



Deft.

LIQUID CARRIERS CORPORATION closed Civ-1970-276

Deft.

Closed

Liquor, 870 bottles assorted -

Div. 2644

Deft.

LIQUORI, Frank L.

Closed Civ-78-293

Deft.

Class

Liquori, James

Civ. 5483

Deft.

LIQUORI, Norma J.

Closed Civ-78-293

Deft.

Closed

Liquors, 17 cases assorted

Div. 2255

Plff.

Closed

Lis, Chester

Civ. 3285

Pltf

LIS, Leo J.

Closed

Civ. 11,300



Deft.

61223

Lis, William F.

Civ. 7481

Deft.

LISANTI, whole milde low ~~clon~~<sup>oc</sup> Civ-77-511  
mositure Mozzarella cheese etc

DEFT.

LISI, Jack Sheriff ~~Closed~~Civ 77-441c

Def't.

LISI, Sheriff Jack,  
Individually & as Sheriff  
of the Steuben County Jail

Civ-81-774B(C)

Pltf: Robert J. Enderle

Pltf.

LISI, William

Closed  
Civ. 11,064

Deft.

LISOWSKI, Michael

Closed Civ-78-239c

Deft.

LISS, Norbert

Closed Civ-74-43

Plff.

Closed

Liss, William R.

Civ. 10181

Closed 10,906

Closed 11,115



Deft.

Closed

Lissas, Marty

Div. 2125

Deft.

LISSOW, Betty

*Closed* Civ-76-140

Plff.

Diszka, Edward T.

Civ. 3235

Deft.

Closed

Liszka, Joseph

Civ, 6984

Deft.

Closed

Lithgow, John B.

Civ. 9524

Daft.

Closed

Lithgow, Mabel P.

Civ . 9524

Plff.

Closed

Litchard, Schultheis and Johnson Inc.

Civ. 5065

Pltf.

LITCHFIELD, Bruce T.

C10886 Civ-74-495



Pltf.

LITE-A-LOY CYLINDER CORP. Clonla Civ-77-84

(Bk-76-2513)

Dept.

LITHOGRAPHERS AND PHOTOENGRAVERS  
INTERNATIONAL UNION, LOCAL 11L,  
AFL-CIO

Closed

Civ. 11,485

Deft.

Closed

Little, Charles

Civ. 9379

Deft.

LITTLE, District Attorney Closed Civ-1968-407

Dept.

Closed

Little Harlem

Div. 2528

Deft.

Little, Ida C.

Civ. 5434

Pltf.

LITTLE, Joe

Closed Civ-74-483

15

Deft.

Little, John - Houseknecht

Civ. 9216

Banks

closed 9217

Teal

closed 9218



Deft.

LITTLE, John C.

Closed Civ-1969-286

Deft.

LITTLE, John C., Jr.

Closed

Civ-1969-51

Deft.

LITTLE, Hon. John C. Jr.

Closed Civ-1966-148

Deft.

LITTLEFIELD, Martin

closed Civ-77-677

~~Closed~~ CIV-78-176

Deft.  
LITTLEFORD BROTHERS, INC.

Civ-81-944C

Pltf. Robert J. Cook & 1

PLTF.

LITTLEJOHN, James See Cr 76-103

Civ 78-495

Deft.

Class

Littlejohn, Jessie Smart

Civ. 4889

Deft.

Closed

Little Joe's Inn

Div. 2545



Pltf.

LITTLE, Joseph

Closed Civ-1971-526  
Civ-75-132

Pltf.

LITTLE, Joseph P.

~~Closed~~ Civ-1971-101

Closed Civ-1971-536

Daft.

Little, Merton - Houseknecht

Civ. 9216

Banks

9217

Total

9218

Deft.

LITTLEFIELD, Martin

Civ-78-176

Deft.

Closed

Little's Esso Station -

Houseknecht

Civ. 9216

Banks

9217

Teal

9218

Plff.

CLOSED

Littleton, Alice

Civ. 8401

Plff.

Closed

Littleton, D'Arcy A.

Civ. 8401

Deft.

LITTLEWOOD, Douglas B.

Closed Civ-75-87



Pltf.

LITTO, John F.

Closed Civ-1972-189

Dept. AUTOMATED  
LITTON/BUSINESS SYSTEMS, INC. Closed Civ-75-559

Pltf

MISC CIV 84-83

LITTON INDUSTRIES, INC., et al

Deft Penn Central Corporation, et al

Pltf.

LITTON INDUSTRIES, INC.  
(a Delaware Corporation)

016966

Civ. 11,584

Deft.

LITTON INDUSTRIES, INC.  
(a New York Corporation)

~~Closed~~ Civ. 11,584

~~Closed~~ Civ-75-559

Pltf.

LITTON MEDICAL PRODUCTS INC.

ClosedCiv-74-99

Pltf.

LITTON SYSTEMS, INC.

Misc. Civ. 77-124  
Misc. Civ. 78-127

Def't.

LITWINSKI, J.

Closed Civ-76-298



Deft.

LIVADAS, Dennis J.

Misc. Civ. 78-119  
~~Closed~~ Civ-79-303

Pitt.

LIVADAS, SPIRO

Classified  
Civ-76-59

Pltf.

LIVECCHI, George S.

Closed

Civ-1969-420

Pltf.

LIVECCHI, George S.      Misc.Civ. 81-161

Pltf.  
LIVECCHI, George S.

Civ-81-552E

Joseph Foreman

Pltf.

LIVECCHI, George Steven

Civ-80-1092B

SEE: Cr-78-65

Deft.

Closed

Liver Injection N.F., 391 Vials

Civ. 11,291

Deft.

Closed

Liver Tablets, 23 bottles

Civ. 6559



Deft.

LIVINGSTON COUNTY DEPARTMENT OF HEALTH

01.02.74 Civ-77-54

Deft.

LIVINGSTON COUNTY DEPARTMENT OF  
SOCIAL SERVICES

Closed

CIV-80-136B

USA

Deft.

LIVINGSTON COUNTY, N.Y.

Closed Civ-1973-532

Pltf.

LIVINGSTON, Eddie

Closed Civ-1970-183

Pltf.

LIVINGSTON & EVANS, INC.

Case Civ-76-96

Plff.

Closed

Livingston, Lawrence

Civ. 4054

Deft.

LIVINGSTON, N.Y. Supreme Court  
Judge

Civ-77-135

Pltf.

LIVSEY, Carole

~~Closed~~ Civ-79-273



Pltf.

LIZAK, Bronislaus

Closed Civ-1969-344

Def't.  
LIZAK, Frank

Closed Civ-1972-223

Plff.

Llop, Manuel C.

Civ. 3745

Closed

Deft.

LLOP, Manuel C. T.

Civ-78-243

Dept.

LLOYD, Anna Mae

Closed

Civ. 9364

Deft.

LLOYD Clarke Burton

Misc.Civ79-68

Deft.

Closed

Lloyd Construction Co, Inc.

Civ. 9275

Deft.  
LLOYD DISTRIBUTORS

Civ-81-978C

Pltf. L. N. Hopkins & 1



Deft.

Closed

Lloyd, Edwin A.

Civ. 977

Pltf.

LLOYD, Jack

Closed Civ-1973-576

Deft.

Closed

Lloyd, Mary D.

Div. 977

PLTF

CIVIL 82-191E

LLOYAD, R.

T.A. Coughlin

H.J. Smith

Pltf.

LLOYD, Robert

Closer Civ-77-541

Deft.

Underwriters at Lloyds

Civ. 2139

Plff.

Lobe, Harry J.

Civ. 9803

Closed

Plff.

Closed

Loba, Linda B.

Civ. 9803



Pliff.

LoBello, Mayme

Closed

Civ. 3373

Deft.  
LOBENE, Frank

*Civ-80-869B* Civ-80-869B

U.S.A.

Pltf.

LOBENE & HAYES, INC.

Closed Civ-1970-249  
Civ-75-407

Deft.

LOBETT, Detective Melvin

Civ-76-310

Closed

Dept.

Loblaw Groceries, Inc. - Brown Div. 1396  
Porter Closed 3147  
Freeman Closed 5403

Plff.

Closed

Loblaw, Inc.

Civ. 7137

Deft.

LOBLAW, INC.

Closed Civ-75-327

~~11000~~ Civ-76-219

Civ-78-243

Dept.

~~File~~ Closed

Loblaw Inc.

Civ. 8240

Cross-Out

7831 ~~Closed~~

Graf ~~Closed~~ Civ-1966-242

Closed Civ-74-346



Deft.

Loblaw's

Closed

Civ. 3147

Deft.

FROZEN LOBSTER TAILS

24 Cartons

Closed Civ. 11,771

Closed

Deft.

Lobster Paste, 125 cartons. Civ. 4014

Deft.

Closed

Lo Bue, Pauline

Civ. 4321

Deft.

LO BUGLIO, John A.  
d/b/a LO BUGLIO BLOCK  
COMPANY

Closed Civ-1967-76

Pltf  
LOCAL 1 of the UNITED FOOD & COMMERCIAL  
WORKERS UNION, AFL-CIO

Civ-82-350B(C)

Deft Edward J. Jablonski, et al

Pltf.

LOCAL 1 OF THE UNITED FOOD  
AND COMMERCIAL WORKERS

Civ-81-548B(E)

Deft.: Heinrich Motors, Inc.

Deft.

LOCAL BOARD NO. 62

Civ-1967-191

~~Closed~~



Deft.

LOCAL BOARD NO. 73

Closed

Civ-1970-412

Deft.  
LOCAL BOARD NO. 78  
Batavia, New York

Closed - Civ-1971-523  
~~Civ-1972-531~~  
Civ-1972-531

Deft.

LOCAL BOARD NO. 84

SELECTIVE SERVICE SYSTEM

Closed

C1v-1969-180

Deft.

LOCAL BOARD NO. 88

Closed Civ-1969-419

Deft.

LOCAL BOARD NO. 89  
SELECTIVE SERVICE SYSTEM

Closed Civ-1969-22

Deft.

Local Board No. 92 Fredonia 01000 CIV-1972-618

Deft.

LOCAL BOARD NO. 92

Closed Civ-1972-316

Deft.

LOCAL DRAFT BOARD NO. 64

Closed Civ-1971-581



Deft.

LOCAL LODGE 1559 OF  
DISTRICT LODGE 65,  
INTERNATIONAL ASSOCIATION  
OF MACHINISTS AND AEROSPACE  
WORKERS

Closed Civ-1969-52

Pltf.

LOCAL LODGE 2144 BROTHERHOOD ~~closed~~ Civ-1969-53  
OF RAILWAY, AIRLINE AND STEAMSHIP  
CLERKS, FREIGHT HANDLERS,  
EXPRESS AND STATION EMPLOYEES

Ddft.

Closed

LOCAL 4, INTERNATIONAL ASSOCIATION  
OF HEAT AND FROST INSULATION AND  
ASBESTOS WORKERS

Civ.10352

ClosedCiv-1973-163

Deft.

LOCAL NO. 4, Licensed Tugmen'SclosedCiv-75-211  
& pilots' Protective  
Association of America

Deft.

Local 686, United Automobile  
Aerospace and Agricultural  
Implement Workers of America

Civ-80-771E

Carrie Walker, etc.

Deft.

Closed

LOCAL 6, INTERNATIONAL ASSOCIATION OF BRIDGE, STRUCTURAL AND ORNAMENTAL IRONWORKERS, AFL-CIO

Civ-1969-207

Closed Civ-1971-554

Deft.

LOCAL UNION NO. 6, OF THE  
INTERNATIONAL ASSOCIATION OF  
BRIDGE, STRUCTURAL AND  
ORNAMENTAL IRONWORKERS, AFL-CIO

Civ. 11,492

Closed Civ-1968-237

Deft.

LOCAL 7, INTERNATIONAL      Closed Civ-1970-115  
BROTHERHOOD OF BOILERMAKERS,  
IRON SHIPBUILDERS, BLACKSMITHS,  
FORGERS AND HELPERS, AFL-CIO



Deft.

LOCAL 8-215, OIL, CHEMICAL, and <sup>Closed</sup> CIV-1967-178  
ATOMIC WORKERS INTERNATIONAL UNION

Deft.

LOCAL UNION NO. 9  
INTERNATIONAL ASSOCIATION  
OF BRIDGE, STRUCTURAL  
AND ORNAMENTAL IRONWORKERS  
AFL CIO

Closed Civ-79-257

Deft.

LOCAL UNION NO. 774

Civ-79-528

Deft.

LOCAL 11, BRICKLAYERS, MASONS  
AND PLASTERERS' INTERNATIONAL  
UNION OF AMERICA, AFL-CIO

Closed Civ-1970-115

Deft.

LOCAL 11, BRICKLAYERS, PLASTERERS, TILE AND MARBLE MASONS' UNION

Case No. 1966-8

Pltf.

LOCAL 12 of the Office &  
Professional Employees  
International Union AFL CIO

Civ-79-405

Deft.

LOCAL 13, UNITED ASSOCIATION <sup>Closed</sup> Civ-1970-115  
OF JOURNEYMEN AND APPRENTICES <sup>Closed</sup> Civ-1970-249  
OF THE PLUMBING AND PIPE <sup>Closed</sup> Civ-1970-250  
FITTING INDUSTRY OF THE  
UNITED STATES AND CANADA <sup>Closed</sup> Civ-1972-373  
<sup>Closed</sup> Civ-76-392

Deft.

LOCAL 14, THE WOOD, WIRE AND METAL LATHERS INTERNATIONAL  
UNION, AFL-CIO

Closed Civ-1970-115



Deft.

LOCAL 14-A, ROCHESTER JOINT Closed Civ-1969-461  
BOARD AMALGAMATED CLOTHING  
WORKERS OF AMERICA

Pltf.

Local 17, International Union  
of Operating Engineers

Civ-74-92

Deft:

Local 17, International Union  
of Operating Engineers

Civ-1972-631

Deft.

LOCAL 17 INTERNATIONAL  
UNION OF OPERATING ENGINEERS

Closed Civ-1970-104

Deft.

LOCAL UNION 17, 17A, 17B, and  
17C, INTERNATIONAL UNION OF  
OPERATING ENGINEERS

Closed

Civ. 11,631

~~Closed~~

Civ-1968-214

Closed Civ-1969-32

Pltf.

LOCAL UNION NO. 188, United  
Rubber, Cork, Linoleum and ~~Closed~~  
Plastic Workers of America  
AFL-CIO

Civ-75-241 *C*

Deft.

LOCAL 22, UNITED SLATE, TILE AND COMPOSITION ROOFERS, DAMP  
AND WATERPROOF WORKERS  
ASSOCIATION, AFL-CIO

Close Civ-1970-115

Deft.

LOCAL 25, NATIONAL ASSOCIATION <sup>Closed</sup> Civ-1970-588  
OF BROADCAST EMPLOYEES &  
TECHNICIANS, AFL-CIO-CLC



Deft.

LOCAL 26, INTERNATIONAL  
ASSOCIATION OF HEAT AND  
FROST INSULATORS AND  
ASBESTOS WORKERS, AFL-CIO

Closed

Civ-1970-115

Pltf.

LOCAL #26, NATIONAL  
ASSOCIATION OF BROADCAST  
EMPLOYEES AND TECHNICIANS,  
AFL-CIO, CLC

Closed Civ-1971-156

Deft.

LOCAL 27, INTERNATIONAL UNION  
OF ELEVATOR CONSTRUCTORS, AFL-CIO

Closed Civ-1970-115

Deft.

LOCAL 32, WOOD, WIRE AND METAL  
LATHERS INTERNATIONAL UNION

Closed

Civ-1966-62

Deft.

LOCAL 33, INTERNATIONAL  
ASSOCIATION OF BRIDGE,  
STRUCTURAL AND ORNAMENTAL  
IRONWORKERS, AFL-CIO

Closed

Civ-1970-115

Plff.

Closed

Local Union No. 36

Civ. 5928

Deft.

LOCAL NO. 36, AMERICAN  
FEDERATION OF GRAIN MILLERS,  
AFL-CIO

Closed Civ-1972-223

Deft.

Local 36, United Association  
of Journeymen and Apprentices  
of the Plumbing and Pipe  
Fitting Industry of the United  
States and Canada, AFL-CIO

Closed

Civ. 11,094



Deft.

LOCAL 39, MILK, ICE CREAM <sup>Closed</sup> Civ. 10,765  
DRIVERS AND DAIRY EMPLOYEES  
UNION, INTERNATIONAL  
BROTHERHOOD OF TEAMSTERS,  
CHAUFFEURS, WAREHOUSEMEN  
AND HELPERS OF AMERICA,  
AND ITS AGENT LAWRENCE KORN

Deft.

LOCAL 46, SHEET METAL  
WORKERS' INTERNATIONAL  
ASSOCIATION, AFL-CIO

Closed

Civ-1970-115

Deft.

LOCAL 55 UNITED AUTO WORKERS ~~Closed~~ Civ-1972-441

Deft.

LOCAL UNION NO. 69, SHEET METAL	closed	Civ-1973-392
WORKERS INTERNATIONAL	closed	Civ-1973-422
ASSOCIATION, AFL-CIO	closed	Civ-1973-427
	closed	Civ-1973-453

Pltf.

LOCAL #72 UNITED BROTHERHOOD OF CAPRENTERS  
AND JOINERS OF AMERICA

Civ-75-164

Deft.

LOCAL 72, UNITED BROTHERHOOD <sup>Closed</sup> Civ. 11,680  
OF CARPENTERS AND JOINERS OF  
AMERICA, AFL-CIO

Pltf.

LOCAL 74, UNITED SLATE, TILE ~~C10560~~ Civ. 11,260

AND COMPOSITION ROOFERS, DAMP

AND WATERPROOF WORKERS ASSOCIATION

OF BUFFALO, NEW YORK

~~617x1888x188~~

Deft.

LOCAL 74, UNITED SLATE, TILE CLOS<sup>d</sup> CIV-1968-188  
AND COMPOSITION ROOFERS, DAMP  
AND WATERPROOF WORKERS ASSOCIATION  
OF BUFFALO, NEW YORK AND VICINITY  
(AFL-CIO)



Deft.

LOCAL 74, an affiliate of the ~~Closed~~ Civ-1970-249  
United Association of Journeymen  
and Apprentices of the Plumbing  
and Pipe Fitting Industry of the  
United States and Canada

Deft.

LOCAL 75, INTERNATIONAL Closed Civ-1970-115  
ASSOCIATION OF MARBLE, SLATE  
AND STONE POLISHERS, RUBBERS  
AND SAWYERS, TILE AND MARBLE  
SETTERS' HELPERS AND MARBLE  
MOSAIC AND TERRAZZO WORKERS'  
HELPERS, AFL-CIO

Deft.

LOCAL 85 OF THE UNITED  
BROTHERHOOD OF CARPENTERS  
AND JOINERS, PRESIDENT

Closed Civ-1971-3946

Deft.

LOCAL 86, INTERNATIONAL  
BROTHERHOOD OF ELECTRICAL  
WORKERS, AFL-CIO

Closed Civ-1970-115

Deft.

LOCAL 91, LABORERS INTERNATIONAL closed Civ-1970-580  
UNION OF NORTH AMERICA

Deft.

LOCAL 91, LABORERS  
INTERNATIONAL UNION OF  
NORTH AMERICA, AFL-CIO

Closed Civ-1970-582

Deft.

LOCAL 118 OF THE INTERNATIONAL  
BROTHERHOOD OF TEAMSTERS, a/k/a  
TEAMSTER FREIGHT DRIVERS &  
HELPERS LOCAL 118

Civ-77-52

Civ 79-380

Deft.

LOCAL 210, LABORERS INTERNATIONAL

UNION OF NORTH AMERICA

Closed Civ-76-128



Pltf.

Local 210, Laborers' International  
Union of North America,  
AFL-CIO

Closed Civ-1973-87

DEFT

CIVIL 82-204E

LOCAL UNION 135, of the United  
Rubber, Cork, Linoleum & Plastic  
Workers of America

Wanda O'Donnell

Pltf.

LOCAL UNION NO. 135 of the  
UNITED RUBBER, CORK, LINOLEUM  
AND PLASTIC WORKERS OF AMERICA,  
AFL-CIO

Closed Civ-1966-193

**Deft.**

**LOCAL 150, BROTHERHOOD OF Closed Civ-1970-115  
PAINTERS, DECORATORS AND  
PAPERHANGERS OF AMERICA,  
AFL-CIO**

Deft.

LOCAL 205, AMERICAN FEDERATION <sup>Closed</sup> Civ. 11,863

OF TECHNICAL ENGINEERS, AFL-CIO <sup>closed</sup> 11,883

PLTF

CIVIL 82-92E

LOCAL 210, LABORERS' INTERNATIONAL  
UNION OF NORTH AMERICA

Labor Relations Div Associated General  
Contractors of America, N.Y.S. Chapter, Inc.  
F.A. WELLINGTON CORP.

Deft.

LOCAL 210, LABORERS  
INTERNATIONAL UNION OF  
NORTH AMERICA, AFL-CIO

Closed

Civ-1970-581

Closed

Civ-1970-583

Pltf.

Closed Civ-79-405

Local 212 of the Office and Professional  
Employees International Union Afl Cio



Pltf.

LOCAL UNION NO. 222, United Closed Civ-1966-83  
Rubber, Cork, Linoleum and  
Plastic Workers of America,  
AFL-CIO

Deft.

LOCAL T-229, UNITED  
TRANSPORTATION UNION,  
AFL-CIO

Closed Civ-1970-199

Deft.

LOCAL 264, INTERNATIONAL  
BROTHERHOOD OF TEAMSTERS,  
CHAUFFEURS, WAREHOUSEMEN  
AND HELPERS OF AMERICA

Closed Civ-1970-362

Deft.

LOCAL 289, UNITED BROTHERHOOD  
OF CARPENTERS AND JOINERS OF  
AMERICA, AFL-CIO

Closed

Civ-1969-32

Deft.

LOCAL 313 OF THE INTERNATIONAL  
UNION OF ELECTRICAL, RADIO AND  
MACHINE WORKERS

Civ-79-693

Deft.

LOCAL 322, UNITED BROTHERHOOD  
OF CARPENTERS AND JOINERS OF  
AMERICA, DISTRICT COUNCIL,  
NIAGARA GENESEE DISTRICT  
CARPENTERS AND JOINERS

Closed

Civ-1967-365

Deft.

LOCAL 323 IUE

Case Civ-76-117

Deft.  
LOCAL DIVISION 1203,  
AMALGAMATED TRANSIT UNION,  
AFL-CIO, CLC

Civ-81-1019C

Pltf. Raymond J. Donovan, Secretary of  
Labor, U.S. Department of Labor



Deft.  
LOCAL UNION 346,  
UNITED TRANSPORTATION UNION  
AFL-CIO

Civ-1972-330

Deft.

LOCAL NO. 329 INTERNATIONAL  
UNION OF ELECTRICAL, RADIO  
AND MACHINE WORKERS, AFL-CIO

Civ-77-351

Deft.

LOCAL UNION NO. 375, INTERNATIONAL  
BROTHERHOOD OF TEAMSTERS, CHAUFFEURS,  
WAREHOUSEMENT AND HELPERS OF AMERICA

Closed Civ-1972-595

Deft.

LOCAL UNION #375, INTERNATIONAL	Closed	Civ. 11,297
BROTHERHOOD OF TEAMSTERS,	Closed	11,818
CHAUFFEURS, WAREHOUSEMEN &	Closed	Civ-1971-254
HELPERS OF AMERICA	Closed	Civ-1971-387
	Closed	Civ-1972-475

Pltf.

LOCAL UNION NO. 398 Teamsters

Civ-1973-562

Deft.

LOCAL 398, BUILDING AND MATERIALclosed  
DRIVERS, INTERNATIONAL BROTHERHOOD  
OF TEAMSTERS, CHAUFFEURS,  
WAREHOUSEMEN AND HELPERS OF AMERICA Civ-1970-115

Deft.

Local Lodge No. 421

Civ. 7417

No. 101

7417

Deft.

LOCAL UNION 424, jointly & ClosedCiv-79-443  
severally



Deft.

LOCAL 424 OF THE UNITED AUTOClosedCiv-77-541  
WORKERS

Deft.

LOCAL 429, BAKERY AND  
CONFECTIONERY WORKERS  
UNION

Closed Civ-77-433

Deft.

LOCAL 434, NATIONAL TRADE  
DIVISION, INTERNATIONAL  
BROTHERHOOD OF TEAMSTERS,  
CHAUFFEURS, WAREHOUSEMEN  
AND HELPERS OF AMERICA

Civ-1973-382

Deft.

LOCAL 434, UNITED PAPER AND  
ALLIED WORKERS DIVISION OF  
INTERNATIONAL BROTHERHOOD OF  
TEAMSTERS, CHAUFFEURS,  
WAREHOUSEMEN AND HELPERS

Closed Civ. 11,757

Deft.

THE LOCAL 435 OF THE LABORERS'  
INTERNATIONAL UNION OF NORTH  
AMERICA (INTERNATIONAL HOD  
CARRIERS' BUILDING AND COMMON  
LABORERS' UNION OF AMERICA,  
AFL\_CIO)

Civ-79-936

Deft.

LOCAL 435, LABORERS INTERNATIONAL ~~Closed~~ Civ-1970-115  
UNION OF NORTH AMERICA, AFL-CIO ~~Closed~~ Civ-78-763

Deft.  
TRUCK DRIVERS LOCAL  
No. 449

Steinman <sup>Closed</sup> Civ-1968-341

Deft.

LOCAL No. 375, Teamsters

Civ-74-172

Civ-75-133



PITT.

LOCAL 435 OF THE RETAIL STORE  
EMPLOYEES UNION

Civ-81-518B (E

Deft; Heinrich Motors, Inc.

Deft.

TEAMSTER LOCAL N O. 449

Closed Civ-1967-268

Closed Civ-1967-382

Closed Civ-1967-388

Closed Civ-1968-130

Civ-1968-172

Civ-75-133

Deft.

Local 450, UNITED PACKINGHOUSE, <sup>closed</sup> Civ. 11,158  
FOOD AND ALLIED WORKERS, AFL-CIO

Deft.

LOCAL 462, an affiliate of the ~~Closed~~ Civ-1970-250  
United Association of Journeymen  
and Apprentices of the Plumbing  
and Pipe Fitting Industry of the  
United States and Canada

Deft.

LOCAL 466 of the Hotel and  
Restaurant Employees and  
Bartenders International Union  
AFL CIO

Closed Civ-74-527

Deft.

LOCAL NO. 498

Civ-1968-201

DEFT

CIVIL 81-1073E

LOCAL 774, UNITED AUTOMOBILE AEROSPACE AND  
AGRICULTURAL IMPLEMENT WORKERS OF AMERICA,  
AFL-CIO

USA

Deft.

LOCAL UNION NO. 501  
INTERNATIONAL LADIES'  
GARMENT WORKERS' UNION,  
AFL-CIO

Clerk: Civ-1969-332



Deft.

LOCAL UNION #501,  
U.A.W., AFL-CIO

Closed Civ-1968-185

Pltf.

LOCAL 509, International Union  
of Electrical, Radio and Machine  
Workers, AFL-CIO-CLC      Closed Civ-1973-260

Deft.

LOCAL 509 International Union of  
of Electricians, Radio and  
Machine Workers AFL-CIO-CLC

Civ-1973-25

Deft.

LOCAL 516, INTERNATIONAL  
UNION, UNITED AUTOMOBILE,  
AEROSPACE AND AGRICULTURAL  
IMPLEMENT WORKERS OF  
AMERICA (UAW)

Closed Civ-1971-362

Deft.

LOCAL UNION NO. 532  
UNITED BROTHERHOOD OF  
CARPENTERS AND JOINERS OF  
AMERICA, AFL-CIO

Closed Civ-1970-473

closed Civ-1973-522

Closed Civ-1973-527

Dept.

C10E0d'

Local No. 558, Market Warehouse, Frozen Food, Cannery  
Worker

Civ. 7481

Closed

Deft.

10,334

Local 600, International Hod Carriers'  
Building and Common Laborers' Union  
of America, AFL-CIO

Deft.

LOCAL 621, LABORERS'  
INTERNATIONAL UNION  
OF NORTH AMERICA

Civ-1972-243



Deft.

TRUCK DRIVERS LOCAL 649,  
INTERNATIONAL BROTHERHOOD  
OF TEAMSTERS, CHAUFFEURS,  
WAREHOUSEMEN AND HELPERS  
OF AMERICA

Closed

Civ. 11,874  
Civ-1973-467

Deft.

GLAZIERS LOCAL 677, BROTHERHOOD OF  
OF PAINTERS, DECORATORS AND  
PAPERHANGERS OF AMERICA, AFL-CIO

105-1970-115

Deft.

LOCAL NO. 826

Closed

Civ-1967-30

Deft.  
LOCAL 832, INTERNATIONAL  
UNION OF OPERATING  
ENGINEERS, AFL-CIO

Civ-1970-115  
Civ-76-511

Deft.

LOCAL 832, INTERNATIONAL

Civ-1968-338

UNION OF OPERATING ENGINEERS, Closed Civ-1970-115

AFL-CIO

Deft.

LOCAL 928, INTERNATIONAL <sup>Closed</sup> Civ-1967-252  
LONGSHOREMEN'S ASSOCIATION,

AFL-CIO

Pltf.

LOCAL UNION NO. 969, United  
Brotherhood of Carpenters  
and Joiners of America

Closed Civ-77-458

Deft.

LOCAL UNION NO. 1034

Closed Civ-1970-32



Deft.

LOCAL 1122, COMMUNICATIONS closed Civ-1971-444  
WORKERS OF AMERICA

Deft.

LOCAL UNION NO. 375

Civ-75-217

Deft.

LOCAL UNION 1133 Brotherhood of  
Railway Carmen of the United States  
and Canada AFL-CIO

ClosedCiv-1973-221

Deft.

LOCAL DIVISION 1203,  
Amalgamated Transit  
Union, AFL-CIO

Closed Civ-74-23

Deft.

LOCAL 1690 INTERNATIONAL ~~Closed~~Civ-79-405  
BROTHERHOOD OF ELECTRICAL  
WORKERS AFL CIO

Deft.

LOCAL UNION NO. 1874 of the      Closed Civ-74-546  
United Steelworkers of America

Deft.

LOCAL UNION 2017, United  
Steelworkers of America

C10800Civ-74-43

Deft.

LOCAL LODGE 2112, INTERNATIONAL  
ASSOCIATION OF MACHINISTS AND  
AEROSPACE WORKERS, AFL-CIO

Closed

Civ-1967-223



Deft.

LOCAL 2248, UNITED  
STEELWORKERS OF AMERICA,  
AFL-CIO

Closed Civ-1971-373

Deft.

LOCAL 2268 UNITED  
STEELWORKERS OF AMERICA

Closed Civ-74-425

Deft.

Closed

Local #2497 USW of America

Civ. 10,335

Jackson Closed 10,961

Deft.  
LOCAL 2601, United  
Steelworkers of America

Closed Civ-1967-432

Closed Civ-1971-487C

Closed Civ-1967-247

Closed Civ-87-187

DEFT

CIVIL 79-40E

Local 2602 of the United Steel  
Workers of America

Donald C. Flowers  
King E. Jones

Deft.

LOCAL 2602, United  
Steelworkers of America

Closed Civ-1967-432

Closed Civ-1971-108

Closed Civ-1971-487C

Closed Civ-78-187

Deft.

LOCAL 2602

UNITED STEEL WORKERS OF AMERICA

AFL-CIO

C10800Civ 1970-609

Deft.

LOCAL 2603, United  
Steelworkers of America

~~Closed~~ Civ-1967-432

Closed Civ-1971-332

Closed Civ-1971-487C

Civ-76-298

Closed Civ-78-187



Deft.

LOCAL 2604, United

Steelworkers of America

Closed

Civ-1967-432

Closed Civ-1971-487C

Closed Civ-78-187

Closed Civ-79-40

Deft.

LOCAL 2613, OF THE UNITED  
STEELWORKERS OF AMERICA

Clasific-76-151

Deft.

LOCAL 3144, United  
Steelworkers of America

Closed

Civ-1967-432

Closed Civ-1971-487c

Closed Civ-78-187

Deft.

LOCAL UNION NO. 3264

Closed Civ-74-432

Deft.

LOCAL UNION NO. 3732 of the ~~Closed~~Civ-74-546  
United Steelworkers of America

Deft.

LOCAL UNION 418E

UNITED STEELWORKERS OF AMERICA

Closed Civ-1967-277

Deft.

LOCAL 5000 of INTERNATIONAL  
UNION OF UNITED STEELWORKERS  
OF AMERICA, MARINE DIVISION

Civ. 10,832

Deft.

LOCAL 7560 United Steelworkers of  
America Afl-Cio

Closed

Civ-79-678E



Deft.

Local 12230 of the United  
Steelworkers of America,  
AFL-CIO-CLC

Civ-81-80E

Carl L. Sabey

Deft.

LOCAL 12330 ALLIED AND TECHNICAL WORKERS OF U.S. AND CANADA,  
DISTRICT 50

Closed Civ-1970-294

Closed Civ-1970-451

Deft.

LOCAL UNION NUMBER 8-23516  
OIL, CHEMICAL AND ATOMIC  
WORKERS INTERNATIONAL UNION

Closed Civ-1970-476

Plff.

Class

Local Trademarks, Inc.

Civ. 5645

Pltf.  
LOCE, John P.

closed  
closed  
Closed

Civ: 11,178  
Civ-1967-445  
Civ-1970-315

Pltf.

LOCEY, Kenneth W., Jr.

Closed Civ-79-343

BEE B-78-933

Deft.

LOCICERO, Keith B.

Closed Civ 678-721

Deft.

Lociero, Allie

Civ. 8024



Deft.

02020

Lociero, Richard

Civ. 8024

D-11  
Dept.

Closed

Look, S. F.

01v/ 2322

Pltf.

LOCKER, John X.

~~Closed~~

Civ-74-205

Pltf.

Closed Civ-79-534 *E*

LOCKHART, John M.

Deft.

LOCKHART, Raymond

Civ-79-36

LOCKHEED Aircraft Corp.

Misc.Civ. 80-221

LOCKHEED AIRCRAFT CORP.

Misc.Civ. 81-6

Deft. & 3rd-Party Pltf.  
Lockheed Aircraft Corp.

Misc. Civ-80-117

Friends For All Children, Inc., etc.



Deft

LOCKLIN, Bruce

*Closed* Civ-81-562B(C)

Pltf: Louis A. Ryen, as Trustee in Bankruptcy  
of David J. Bullen & 1

Plff.

Locklin, David C., Jr.

Closed

Civ. 3344

Deft.  
LOCKLIN, Dolores

*Closed* Civ-81-562B(C)

Pltf: Louis A. Ryen, as Trustee in Bankruptcy  
of David J. Bullen & 1

Plff.

Closed

Locklin, Rosa Lee

Div. 3344

Pltf.

LOCKPORT CANNING COMPANY      Closed      Civ-1966-138

Daft.

Closed

Lockport Canning Co. Inc.

Civ. 8324

Deft.

LOCKPORT, City of

Closed

Civ-1967-189

Closed

Civ-1971-169

Deft.

City of Lockport, New York

Civ-80-189

Williams Brothers & Co.



Deft.

LOCKPORT LOCAL 85 of,  
and UNITED PAPER MAKERS  
AND PAPER WORKERS AFL-CIO

Closed

Civ. 11,368

Dept.

LOCKPORT MILLS, INC.

Civ. 11,378Closed

Pltf.

LOCKPORT NON FERROUS CASTING ~~010806~~ Civ-77-552  
INC.

Deft.

LOCKPORT PRODUCTS, INC.

Closed Civ-75-209

Closed

Plff.

Lockridge, H.R.

Civ. 3344

Deft.

Lookwood, Alfred

Civ. 1568

Closed

Pltf.

LOCKWOOD, James

010884Civ-77-221

Plff.

Closed

Lockwood, John

Civ. 3529



Plf f.

Lockwood, Lucille

Closed

Civ. 3530

Deft.

Closed

Lockwood, Lyman R.

Civ. 1658

Deft.

Closed

Lockwood, Nina

Civ. 1658

Deft:

Closed

Lookwood, William

Civ. 1568

Pltf.

LOCUS, James Joseph

Misc. Civ-80-103

Barry A. Ganzhorn ,etc.

Closed

Deft.

Locust Fruit Market

Div. 2115

Deft.

Locust Point Quarries, Inc.      Misc. Civ-80-83

RSE, Inc., etc.

Deft.

LODER, Joseph B. M.D.

Closed

Civ-1967-53



Plff.

Lodeski, Leo

Closed

Civ. 3459

Deft.

LODESTRO, Lucial

closed

Civ-1967-413

Pitf.

LODESTRO, Lucian L.

Closed Civ-1969-414

Deft.

LODGE 2106, INTERNATIONAL  
ASSOCIATION OF MACHINISTS &  
AEROSPACE WORKERS, AFL-CIO

Closed

Civ-1971-438

Deft.

LODER, Earl

Civ-78-239

Deft.

LODGE & SHIPLEY COLUMBIA, INC.

Closed Civ-76-39

Plff.

Lodick, George J.

Closed

Civ. 3278

Deft.

LOEB, Arthur

Class# Civ-76-603



Deft.

LOEB, John

Closed Civ-76-382

Deft  
LOEB RHOADES & CO., INC.

MISC CIV 83-70

Pltf Maryville Academy, et al

Deft.

LOEB, RHOADES & CO.

~~Closed~~ Civ-76-382

Closed Civ-76-595E

Deft.

LOEB RHOADES HORNBLLOWER & CO.

Civ-81-701B(C)

Pltf: Robert E. Lutz

Deft.

LOEBMANN, WILLIAM E.

Closed Civ-74-151

Pltf:  
LOEB, Roger C.

Closed Civ-76-605

JTH

Closed

Plff.

Loebs, Florence E.

Civ. 6737

Plff.

Closed

Losser, Frank

Civ. 7253



Plff.

Loewe, Frederick

Civ. 7652

31-0000 Civ-77-438

Plff.

Loewe, John P.

Civ. 3235

Deft.  
LOEWS CORPORATION

Closed Civ-1971-571 <sup>C</sup>  
Civ-74-132

Deft.  
LOEWS DOE CORPORATION

Classified Civ-1971-571d

Piff.

Closed

Loew's, Inc. - Martina

Div. 3113

(2)

Dept.  
Loew's

~~Loew's~~ Inc.

-Senate Theatre	Closed	Civ.	7436
Marlow "	Closed		7437
Regent #	Closed		7438
Circle "	Closed		7439
Michaels Plaza	Closed		7865

Deft.

Loew's Inc.	-U. S.	Closed	Div. 223
	Bordonaro Bros.	Closed	3052
	Dipson	Closed	3058
	Rivoli	Closed	3394
	Martina	<u>Closed</u>	5000
	"		5890
	Moore	Closed	6242

Deft.

LOEW'S TECK THEATRE

Close<sup>d</sup>

Civ-1973-56



Dept.

Closed

Loew's Theatres, Inc. - Michaels Plaza Civ. 7865

Dept.

Loew's Theatre & Realty Corp. - Michael Plaza -Civ. 7865

Civ-74-132

Deft.

LOFSTRAND, Kenneth

Close Civ-75-226

Deft.  
LOFSTROM, R., Employed as Captain at  
Elmira Correctional Facility

Civ-81-231B

(c)

Teddy Lewis

Deft.

LOFTON, Debra

Case# Civ-77-390

Pltf.  
LOFTON, Joe

*Closed*

CIV-80-664B

Sec. HEW

Deft.  
LOFTON, "John"

~~Case~~ Civ-77-390

Closed

Deft.

Lofton, Mattie

Civ. 7344



Closed

Deft.

Lofton, Robert

Civ. 7344

Closed

Plff.

Lofton, Robert L. - Boland

Civ. 9686

Bethlehem

Closed

9753

Deft.  
LOFTUS, Martin J.

Closed Civ-1967-5

Pltf.

LOGAN, Barbara A. et al

Misc. Civ-79-168

used

Deft.

Logan, Bertha M.

Civ. 1166

Closed

Deft.

Logan, Clifford Andrew

Civ. 4561

Pltf.  
LOGAN, Dewitt J.

Closed Civ-76-336

Deft.

Closed

Logan, E.

Civ. 1166



Deft.

Closed

Logan, Earl

Civ. 3431

Deft.  
LOGAN, Francis

Closed Civ. 10,751

Plff.

Closed

Logan, Frankie A.

Civ. 3344

Deft.

LOGAN, Ivan, Chief Marshall  
Cattaraugus Reservation

Close Civ-76-364

~~Close~~ Civ-76-368

Deft.

JACOB LOGAN CEMETERY

Closed

Civ. 10,888

Deft.

LOGAN, James, Lt.

Closed Civ-75-10

Pltf.

LOGAN, Joseph

Civ-1966-130 Closed

Civ-1967-119 Closed

Civ-1967-228 Closed

Civ-1967-282 Closed

Civ-1967-316 Closed

Pltf.  
LOGAN, Joseph David

Closed Civ-1968-310



Pltf.

LOGAN, Joseph David Jr.

Closed  
Closed

Civ-1968-349

Civ-1970-439

Deft.  
LOGAN, Richard W.  
d/b/a UHL, HALL &  
RICH

Closed Civ. 10,538  
Closed 11,242

PLTF

CIVIL 82-297E

LOGAN, Robert

Industrial Incineration et al

PLTF

CIVIL 81-589C

LOGAN, Robert R., Co-Chairman of Board of  
Trustees of the Bflo Carpenters Pension  
Fund, et. al.

J.E. Arnold Development Corp,

Plff.

Logeman, Edward F. -Gen. Electric Closed Civ. 9546  
U. S. closed 9571

Deft.

LOGEMANN BROTHERS COMPANY

Gloucester Civ-1970-269

Pltf.-Int.

LOGGIE, John

Closed Civ. - 1971-14

Def't.

LOGSDON, Donna

closed Civ-74-225



Deft.

LOGSDON, William

Close Div-74-225

Plff.

Class

Lohr, Mary Grace

Civ. 4332

4866

Deft.

Closed

Loiacono, Frank

Civ. 2680

Deft.

Loiacano, Mary

- Bowles-

"

Closed

4 Div. 2772

Closed

2636

Plff.

Closed

Loehinger, Mildred Paufler

Civ. 3373

P11f.

Loiconn, Angeline

Closed

Civ. 3373

Plff.

~~Closed~~

Lois Music Publishing Co.

Civ. 6006

Ptff.

LOISH, Cheryl L.

Closed Civ-1969-432



Pitf.  
LOISH, William

closed Civ-1969-432

Plff.

---

Lokay, Bronislaus J.

Civ. 867

Pltf.

LO-LIFT MANUFACTURING CORPORATION

Closed Civ-75-556

Closed Civ-76-294

Civ-78-115

Closed-

Deft.

LOLL, Geraldine H.

Closed Civ-77-553

DEFT

CIVIL 82-254B (E)

LOLL, Joy

USA

DEPT

CIVIL 82-2548 (E)

LOLL'S PHARMACY, INC.

USA

DEFT

CIVIL 82-2542 B(E)

LOLL, Richard C.

USA

Deft.

LOLL, Thomas G.

Closed Civ-77-553



Deft

Closed

CIV

80-110

LOLLA, James R.

USA

Ptff.

LOLLEY, Harold

Closed Civ-1969-72

Deft.

Lollipop Farms, Inc.

Closed Civ-80 1093E

United States of America

Deft.

Closed

Lomanto, Adelfia

- Berlin  
Harms

Civ. 1131  
1132

Deft.  
LOMBARD, William

Closed  
Civ-1969-286

Closed Civ-74-25  
Civ-74-245

Closed Civ-74-279  
Civ-76-508

Closed Civ-77-46

Civ 78-682  
Civ-79-62B(E)  
Civ-79-63B(E)  
Civ 79-66

Civ 79-67

Civ 79-68

Civ 79-69

Civ 79-70

Deft.

LOMBARD, William and Staff

Civ-77-135

Deft.

LOMBARD, William  
Monroe Cty. Sheriff

Closed Civ-74-576

Closed Civ-75-139

Closed Civ-75-236

Closed Civ-75-240

Closed Civ-75-251

Closed Civ-75-296

Closed Civ-75-424

Closed Civ-75-542

Closed Civ-77-633

Closed Civ-78-573

Deft.  
LOMBARD, William Sheriff  
Monroe County

Close Civ-79-788

Close Civ-79-790



Deft.

LOMBARD, William M., Sheriff of <sup>Closed</sup> Civ-79-736  
Monroe County

Deft.

LOMBARD, William M.

Civ-80-7

DEPT.

LOMBARD, William M.

~~Closed~~ Civ-1968-51

~~Closed~~ Civ-76-272

~~Closed~~ Civ-76-53-

~~Closed~~ Civ-76-177

~~Closed~~ Civ-76-231

~~Closed~~ Civ-76-232

~~Closed~~ Civ-76-250

~~Closed~~ Civ-76-251

~~Closed~~ Civ-77-481

~~Closed~~ *4/77* Civ-79-685

Deft.

LOMBARD, Sheriff William M. ~~Civ-78-778~~ Civ-78-778

Deft.

LOMBARD, William M.  
Monroe County Sheriff

Closed Civ-79-886

Pitt.

LOMBARDI, C. James, Jr.      Civ-1973-80

Pltf.  
LOMBARDI, C. James Jr.

Closed

Civ. 11,645

Closed 11,662

Closed 11,670

Pltf.  
LOMBARDO, Charles

Closed Civ-1972-287

Closed Civ-1972-467



Deft.

Class

Lombardo, Frank

Civ. 431

Deft.

Class

Lombardo, Giuseppe

Div. 270

Deft.

LOMBARDO, Joan M.

Case Civ-76-585

PLTF

CIVIL 80-712C

LOMBARDO, Joseph A.

USA

Deft.

LOMBARDO, Joseph A.

Closed Civ-1972-155

Closed Civ-76-585

Def't.

Lombardo, Joseph M.

Closed

Civ. 3468

Deft.

LOMENZO, John P., The Sec. of <sup>Closed</sup>  
State of The State of New York Civ-1973-222

Deft.

LOMENZO, John P.  
Secretary of State  
of the State of N.Y.

Civ-1968-224

Closed



pltf.

LOMEO, John

@lowe@Civ-77-16

Dept.

Lewis, Michael

Closed ?

Div. 2567

Deft

Closed

Lommer, Otto C.

Clv. 2950

Pltf.

Closed

LOMER, William H.

Civ. 7648

Deft.

LO MONACO, Mario B., Dr.

Civ-76-301B

Deft.

Lonberger, Price

Closed  
Civ. 4235

Daft.

Loncar, George V.

Closed Civ. 10,064

Deft.

Closed

London Gramophone, Corp.

Civ. 4494



Plff.

Closed

London & Lancashire Indemnity Co. of Am. -Civ. 7077

Deft.

Closed

London & Lancashire Indemnity Co. of Am .

Civ. 359

Plff.

London, Nathan

Closed

Civ. 6353

Pltf

LONE STAR STEEL COMPANY

MISC CIV 83-103

Deft National Union Fire Insurance Co. of  
Pittsburg, PA., et al

Plff.

Closed

London, Toby

Civ. 6353

Ptff.  
LONG, Albert

Closed Civ-1969-402

Closed

Deft.

Long, Alfred C.

Civ. 7851

Dept/

Closed

Long, Amos J.

Civ. 7473



Deft.

LONG, Barbara K.

Civ-75-546

Deft.

LONG, Charles Bruce

Classified Civ-75-306

Classified Civ-75-443

Classified Civ-75-444

Deft.

LONG, Charles B.

Case: Civ-76-100

Pltf.

LONG, Charles Bruce d/b/a  
Long's Taxi Service

Closed Civ-76-54

Plff.

Closed

Long, Mrs. B.J.

Civ. 3344

Plff.

Long, Charles A.

Civ. 4963

Pltf.

LONG, David S.

Civ-78-597

MISC CIV 85-71

IN RE LONG DISTANCE TELEPHONE  
SERVICE ANTITRUST LITIGATION

---

Notice to take deposition  
(Northern District of California)



MISC CIV 84-1

IN RE LONG DISTANCE TELEPHONE  
SERVICE ANTITRUST LITIGATION

MDL No 550 S.W.

DEFT

MISC CIV 82-74

LONG DISTANCE COMMUNICATIONS, INC.

Integrated Products

Plff.

Closed

Long, Dorthea M.

Civ. 1454

Deft.

Long, Earl

-Goldberg

C10505

Civ. 8963

U.S.

C10505

9181

Def't.  
LONG, Earle A.

Closed Civ-1971-418

Plff.

Long, Edward W.

Civ. 5740

Class

Plff.

Long, Emily

Div. 3373

Plff.

Crossg

Long, Emily F.

Div. 3373



Dept.

MARCH

Long, Ernest A.

Civ. 7877

Closed

Deft.

Long Fir Gutter Co.

Civ. 7851

Pltf.

LONG, Harold E

ClosedCiv-1973-206

Deft.

Closed,

Long, Helen Marie

Civ. 8837

Dept.

---

Long, Howard D.

Civ. 7029

Pltf.

LONG, James, Estate of

see LONG, Violet

Piff.

Closed.

Long, James

Civ. 5702

Plff.

Closed

Long, Jay W.

Div. 1454



Deft.

LONG, Kinzy

Closure, Civ-77-357

Deft.

LONG, Laura C.

Closed Civ-1971-418

Pltf.  
LONG-LOK CORPORATION

Closed Civ. 11,002

C108UC

Dept.

Long Mfg. Co.

Civ. 8963

Dept.

Long, Marion B.

Civ. 7473

Pltf.

LONG, Melvin B.

Closed Civ-1971-13

Deft.

Long Nails

Closed Civ-74-415  
Civ-74-416

Deft.

Class

Long, Patrick

Civ. 5702



Pltf.

LONG, Richard Y.

Civ-78-597

PIT.

LONG, Sumner A.

ClosedCiv-1970-26

Pltf.

LONG, Violet, as Administratrix  
of the Estate of JAMES LONG

010983 Civ-76-54

Deft.

LONG, Violet

Close#Civ-75-306

Close#Civ-76-100

Close#Civ-75-443

Close#Civ-75-444

Closed

Dept.

Long, Virginia S.

Civ. 7851

Pltf.

LONGALE, Gene A.

Closed Civ-1972-630

Closed Civ-1973-4

Pltf.

LONGALE, Otto Charles

*Closed*

Civ. 10,737

Plff.

Closed

Longano, John

Civ. 4626



Deft.

The Vessel LONGHORN,  
Her Engines, Tackle and Gear

Closed Civ-1970-352-A

Plff.

Closed

Longernecker, Raymond Wm.

Civ. 6395

Deft.

LONGHOUSE NO. 1 CEMETERY

~~Closed~~

Civ. 10,885

Deft.

LONGHOUSE NO. 2 CEMETERY

Closed

Civ. 10,885

Deft.

Closed

Longo, Agostino

Civ. 3895

Plff.

Closed

Longo, Philip J.

Civ. 7062

Deft.

Misc Civ-80-12

LONGRIDGE PROVISIONS CO., INC.

Dept.

63 0000

Longrod, Wilbur

Civ. 7316



2. 0000

Dept.

---

Longrod, William

Civ. 7316

Deft.

LONGWEAR PRODUCTS CORPORATION <sup>Closed</sup>Civ-1971-418

DEFT

Closed CIVIL 80-1121C

LONSBERRY, Marlin R.

USA

Plff.

Closed

Looby, Edward L.

Civ. 8181

In the matter of the tax  
indebtedness of:

MISC CIV 83-65

LOOK INN RESTAURANT, INC.

Deft.

LOOK NEVADA, INC.

Closed Civ-77-131

*HPC*

Deft.  
LOOK S.A. INC,

Closed Civ-77-131

*HPB*

Plff.

Cases

Lookatch, Thelma M.

Civ. 357



Pltf.

LOOKOUT LODGE - see TERRY, Allan and Norma

Deft.

C10804

Loomis, Robert J.

Civ. 10135

Plff.

LOONEY, Joseph A.

Closed

Civ. 10,360

Def.

LOONSKY, Herman P.

Close-Civ-1973-158

Deft  
LOOP, INC., et al

MISC CIV 84-13

Pltf Billy E. Ford, et al

Deft/

Closed

Loops & Smith, Inc.

Civ. 5336

Pltf.

LOOS, Gerald W.

Closed CIV-1972-611

Deft.

LOOS, HIRSCH, FITZGERALD    Closed    Civ-1972-198

Parole Commission



Deft.

LOPATIN, Albert

Civ-79-36

Deft.

Closed

Lopes, Helen DePaula

Civ. 988

Closed

Plff.

Lopez, Constantino

Civ. 112

PLTF

CIVIL 82-23E

LOPEZ, Leonor, on behalf of herself  
and her infant daughter MARIA LOPEZ

Fred J. Buscaglia  
Barbara Blum

Pltf.  
LOPEZ, Pedro

Closed Civ-1971-308

Dept.

Closed

Lopez, Pete

Civ. 4833

PLTF

CIVIL 81-684C

LOPEZ, William

Herriott Trucking Corp

Plff.

LoPresti, Philip

Civ. 3289



Deft.  
LOR, INC.

Misc.Civ.81-181B

Pltf. Tri-Collar, Inc. & 1

Deft.

LORAIN TRANSFER & STORAGE CO, <sup>10364</sup> Civ-78-313  
INC.

Deft  
LORANTY, Roandl E.

Civ-82-138B(E)

Pltf USA

Deft.

LORBER, Lawrence Z.

Close#Civ-76-492

Pltf.

LORBER, Stephen

Closed Civ-74-376

Deft.

LORD, Arthur

Civ-1970-96

Plff.

Closed

Lord, Doris

Civ. 5740

Plff.

~~Civ.~~

Lord, Edward W.

Civ. 5740



Pltf.  
LORD, Glen

Civ-81-1016C

Deft. Harold J. Smith & 1

DEFT

CIVIL 80-348

LORD, James Russell, Jr.

U.S.A.

pltf.

LORD, James Russel Jr.,  
See Cr# 1969-70 & 71

Closed Civ 78-638

Pltf.

LORD, James R., Jr.

Misc.Civ. 81-162

PltF  
LORD, Jr., James R.

Civ-82-339B(C)

Deft      Attorney Gneneral of State of NY

DEFT

CIVIL <sup>81</sup>~~82~~-525E

LORD, Gordon, Sr.

Raymond Leach  
Willie Maple Sr

DEFT

CIVIL 81-139C

LORD, James S.

USA

Deft.

Closed

Lord-Taber Co., Inc.

Civ. 3593



Deft.

Lord Jewelry Corp.

Glenn

Civ. 5131

Pltf.

LORD, Saladin

Closed Civ-76-120

Deft.  
LORDEN, Bernard

Closed  
Civ. 10,912

Deft.  
LORE<sup>1</sup>, John M., Jr.

Closed Civ-75-297E

Deft.

LOREE, William C., Principal for Civ-80-1081B(E)  
the Lincoln School, Individually  
and in his official capacity

Eleanor Belliotti

Deft.

Closed

Lorenz, Anton

Civ. 4969

Plff.

Closed

Lorenz, Earl A.

Civ. 5438

Deft.

Lorenz, John J.

010000

Civ. 7420



Plff.

Closed

Lorenz, Robert A.

Civ. 8165

Def't.

LORENZO, Leonard M. Sr.

Closed Civ-1968-2

Deft.

010888

Lorenzo, Victor L.

Civ. 9678

Pltf.  
LORET, Jean

Closed Civ-1972-152

pltf

LORETTO, Jeanette

civ 79-14e<sup>Class:</sup>

LORGLER, Frank C.

Closed Civ-1967-307

Closed

Dept.

Loria, Rose

Civ. 4116

Deft.

Closed

Loria, Sam

Civ. 4116



Pltf.  
LORICK, Bruce

Civ-81-1117C

Deft. Harold J. Smith, et al.

Deft.

---

Loring, Willard

Civ. 113

Pltf.

LORIOI, John

Close Civ-78-572

Closed

Plff.

Lorrens, Irene

Div. 3319

Dept.

CHARLES W. LORTSCHER, INC.

Civ. 9663

Q1050

Deft.

LORUSSO, Anthony P.

Closed Civ-75-454

Plff.

closed

Los Angeles Junction Ry. Co.

Div. 8871

Deft.

LOS, Rita L.

Misc.Civ-84-3C

Pltf.

U.S.A. and Revenue Officer Robert V. Jagodzinski



Pltf.

LOSCHAIVO, Augustine

Civ-80-349

Janice Cummings, etc. & 1

DEFT

CIVIL 81-489E

LOSCHIAVO, Gus

Ronald J. Ludemann, Jr.

Plff.

Class

Losensky, Bernard

Civ. 436

Plff.

LOSEY, Harold

Closed

Civ. 10,444

Deft.	Closed		
LOSEY, Harold	<del>Closed</del>	Smith	Civ. 10,350
		Mitchell	10,351

Plff.  
LOSEY, Margaret

Closed  
Civ. 10,444

Deft. ....

LOSEY, Margaret

010802

Smith Civ. 10,350

010801 Mitchell 10,351

Deft.

Closed

Losie, J. D.

Div. 1399



Deft.

LOSINGER, Glen Earl

~~Closed~~ Civ-76-31

Closed 76-32

Deft.

LOSINGER, W. Michael

Closed Civ-77-566

Pltf.

LOSTRITTO, Stephen J.

Closed Civ-76-146

Plff.

Loszka, Edward S.

Closed

Civ. 3373

Pltf.

LOTEMPPIO, Beverly

ClosedCiv-74-241

Deft.  
LOTEMPIO, Charles

Closed Civ-80-819E

United States of America

Deft.

LOTEMPPIO, Frank L

Closed Civ-80-819E

United States of America

Pltf.

LOTENPIO, Frank L. Jr.

Closed Civ-74-241



1  
Deft.

Closed

LoTempio, Frank

Div. 2643

Deft.

LOTEMPPIO, John V.

Closed Civ-80-819E

United States of America

Pltf.

LOTEMPPIO, Joseph A.

Civ-81-112E

Consolidated Rail Corporation, et al.

Deft.

Closed CIV. 79-161E

LOTEMPIO, JOSEPH & BEVERLEY

Deft.

Closed CIV. 79-161E

J.V. LOTEPIO INC.

Plff.

Closed

LoTempio, Russell

Div. 576

Deft.

LOTEMPPIO, Paul Carmen

Closed Civ-80-819E

United States of America

Plff.

Closed

Lott, Mary

Div. 3373



Deft.

LOTTER, Leon K.

Misc.Civ. 76-44

Deft.

*Class*

Lottery tickets, items of

Civ. 292

Deft.

LOU AWALD CHEVROLET INC.

Closed Civ-1969-322

Closed Civ-78-91

Deft.  
LOUCKS, Howard C.

Closed Civ-1968-325

Deft.

LOUCKS, Marie A.

Closed

Civ-1968-325

PLTF

MISC CIV 85-145

LOUDERBACK, Allan L., and  
AMERICAN HOSPITAL SUPPLY CORP.

DEPOSITION NOTICE  
(Central Dist. of California)

Deft Fisher Scientific Company

Pltf.

LOUGEE, John R.

Civ-81-291E

Bethlehem 1977 Salaried Pension Plan, et al.

Pltf.

LOUGHLIN, Eleanor

closed Civ-77-218



Deft.

LOUGHNEY, Patricia

Closed Civ-74-212

Pltf.

LOUGHNEY, Patricia

Closed

Civ-1973-238 *E*

*Left*

*Lawyers Cooperative  
Publishing Co.*

Deft

Closed---

Louis, Ann

Civ. 5858

DEFT

CIVIL 81-29C

LOUIS BERKMAN COMPANY

Bflo Forge Co.

PLTF

Closed CIVIL 81-695C

LOUIS, Carol J., Administratrix of personal  
estate of Jerome A. Louis, Decedent

Consolidated Rail Corp

Closed

Pltf.

LOUIS DEL PRINCE & SONS, INC.

Civ-1966-56

Dept.

Closed

Louis Grill

Div. 2430

Deft.

LOUIS J. DeCARLO & SON, INC. ~~Closed~~ Civ-76-254



Dept.

Louis, James

Civ. 5959

Pitf.

Civ-81-77B

LOUIS, James J.

John Aman  
Ronald Brown  
John A.R. Walsh

Pltf.

LOUIS, James J.

Closed Civ-77-230

Deft.

Cited

Louis, James J. Jr.

Civ. 5959

Deft  
LOUIS MARX & CO., INC., et al

MISC CIV 93-104

Pltf Stacy Marie Vincent, et al

Plff.

Cases

Louis, Phillip

Civ. 4232

Deft.

Louisians Pacific Corporation

Civ-79-893

Pltf.

LOUISIANA-PACIFIC CORPORATION

Closed Civ-1973-603



Deft.

Closed

Louisville Cement Co. of N. Y. Inc.

Div. 340

Deft.

Misc.Civ. 80-250

LOUISVILLE & Jefferson County  
Metropolitan Sewer District

Closed

Deft.

Louisville & Nashville RR. Co. Civ. 4333

Closed 10,530

Deft. Int.

LOUISVILLE AND NASHVILLE  
RAILROAD COMPANY

Closed Civ.-1971-542

Pltf.

LOUK, Thomas

Civ-75-132

Plff.

Closed

Lovaglia, Tony

Div. 2343

4443

~~83507~~

Pltf.

LOVALLO, Lee T.

Closed Civ-1972-26

Class

Dept.

Love, Donald

Civ. 5040



Pltf.

LOVE, Henry X

Closed Civ-74-573

Pltf.

LOVE, Henry 5X

Closed Civ-1972-636

Closed Civ-1973-78

Closed Civ-1973-95

Closed Civ-1973-266

Pltf.

LOVE, Nathaniel

Closed Civ-1966-92

Deft.

Closed

Love, Percy

Civ. 5971

Deft.

LOVE, Robert E.

Closed Civ-81-354E

United States of America

Deft.

LOVE, Robert E.

~~Closed~~ Civ-79-470

Pltf.

LOVE, Walter W.

Closed Civ-74-255

Pltf.

LOVE, Willie <sup>Mac</sup>~~Lee~~

Closed Civ-76-126



Closed

Deft.

Lovecchio, Francesco

Civ. 3398

Deft.

Closed

Lovejoy, Emery A.

Div. 1916

Plff.

Lovejoy, Frank

Closed

Civ. 3459

Deft.

Closed

Lovelace Co.

Civ. 4560

Pltf.

LOVELESS, James L.

ClosedCiv-1966-133

Deft.

LOVELL MANUFACTURING CO.

Closed Civ-1969-300

PLTF

CIVIL 82-224E

LOVERDI, Paul

Gordon Ambach, et. al.

Deft.

LOVERIC, Thomas J.

Civ-90-966E

Gary Michael Krug



Plff.

cl/57

LoVerso, Santo

Civ. 5854

Deft.  
LOVETRO, Samuel A.

Closed Civ-79-931E

Pltf.

LOVETT, Adeeb M.  
a/k/a N. Dockery

CLOSE PCiv-78-168

Plff.

Lovett, Bertha Mae

Closed

Civ. 3344

Pltf.  
LOVIG, Charles

Closed Civ-1970-484

Plff.

Closed

Lovingood, Lewis P., Jr.

Civ. 3344

Plff.

Lovingood, Mildred C.

Closed

Civ. 3344

Closed

Plff.

Lovingood, Selena H.

Civ. 3344



DEFT

CIVIL 81-634C

LOW, Richard

Ellis Clanton aka Clay Williams

DEFT

Closed CIVIL 80-270 4/15/81

LOW, Richard I.  
NYS Div. of Parole

William S. White

Deft.

LOWE, Alvin

Closed Civ-76-377

Plff.

Lowe, Annie Lee

Closed

Civ. 3344

Pltf:  
LOWE, Byron

Closed Civ-1969-176

Def't.

LOWE, Edwin R.

Closed Civ-1969-314

Pltf.

LOWE, Lula

~~Closed~~ Civ-1969-176

Deft.

LOWE, Maple L.

Closed Civ-76-277



Deft.

Closed

Lowenthal, Arthur E.

Civ. 6623

Deft.

Closed

Lowenthal, Arthur M.

Civ. 6623

Deft.

Class

Max Lowenthal & Sons

Civ. 6623

Deft.

Closed

Lowenthal, Robert L.

Civ. 6623

Deft.

Lower Niagara Boat Tours, LTD.

Civ-80-795E

Royal Hydrofoil Cruises, Inc. & 1

Closed 3

Deft.

Lowery, J. Fred

Civ. 1494

" 1495

DEFT

Closed CIVIL 80-693C

LOWERY, Kent C.

USA

Pltf.

LOWERY, Leon W.

~~Close~~Civ-76-214



Deft.

Civ-81-324C

LOWICKI, A. L., Officer

Robert Moates

Pltf  
LOWREY ORGAN CENTER, INC.

MISC CIV 83-34

Deft: Norlin Industries, Inc.

Plff.

Lowrey, Roland J.

Civ. 3235

Deft.  
LOYST, Leroy T.

Civ-81-970C

Pltf. Manufacturers and Traders Trust Company

Plff.

LOZANO, Eugene

Closed

Civ-1969-353

Deft.

Closed

Lozina, Ivan

Civ. 7902

Deft.

---

Lozina, Stanley

Civ. 7902

Plff.

LOZZI, Robert L.

Closed

Civ. 10,623



Plft  
LUBEY, Margaret

Civ-81-1124B(E)  
BK 80-21907

Deft Angela Weiland

Pltf  
LUBEY, Margaret

Civ-81-1126B(E)  
BK 80-31907

Def't    Angela Weiland

Deft.

LUBICK, Susan

Civ-76-354

Deft.

LUBIN, Isabella

Closed Civ-1969-197

Deft.

LUBIN, Estate of Maurice

Closed Civ-1969-197

Plff.

Closed

Lublow, Albert

Civ. 4284

So. Bflo. RR

Closed

9726

Closed

Plff.

Lucas, Alfonso

Civ. 3344

Deft.

Closed

Lucas, Clara M.

Civ. 1060



PLTF

CIVIL 82-154E

LUCASFILM LTD

Robert Hyatt  
Bob Hyatt's Stereo Center

Dept.

Closed

Lucas, James S.

Civ. 9867

Closed

Deft.

LUCAS, E. John

Div. 627

Pltf.  
LUCAS, Joyce Ann

Closed Civ-78-124

Pltf.  
LUCAS, Henry

Closed Civ-1972-298

Pltf.  
LUCAS, Kurt

Closed

Civ. 10,734

Pltf.

LUCAS, Lee L., Jr.

Closed Civ-1969-476

Deft.

Closed

Lucas, Terrill

Civ. 5633



Deft.

Closed

Lucci, Eugenio

Civ. 1724

Deft.

LUCCI, Pasquale

ClosedCiv-1973-615

Deft.

Closed

Luce, Darwin:

Civ. 5980

Czerepak Closed

6507

"

Closed

6508

Deft.

Luce, Ethel

Civ. 7500

Closed Civ-1967-394

Deft.  
LUCE, Gertrude

Closed Civ. 10,432  
Closed 10,779

Closed

Deft.

Luce, Homer

Civ. 7500

at Civ-1967-394

Plff.

Closed

Luce, William O.

Civ. 8583

Closed

Plff.

Lucente, Pasquale

Civ. 6421



Pltf.

LUCH, George R.

Closed Civ-1971-529

Deft.  
LUCHEY, Wilfred

Closed Civ-81-74E

United States of America

Plff.

closed

Luchey, William

Civ. 9822

~~closed~~ 10,528

Deft.

LUCHT, Allan

GL 0004 Civ-1973-369

Plff.

closed

Luciano, Jose

Civ. 8953

Deft.

LUCIANO, Michael, U.S.  
Parole Officer

ClosedCiv--79-168C

Burnie McCall

Deft.

LUCIDOL 60 Lbs. net

closed Civ-77-330

Civ-77-492

Deft.

Closed

Lucisani, Lawrence Rocco

Civ. 5424



Pltf.

LUCITT, Edna M.

Closed

Civ-1967-361

Deft.

LUCKMAN, Earnest C.

Closed Civ-79-672

Deft.

LUCKETT, Richard S.

Closed Civ-1971-89

310000

Deft.

Luckman, Joyce

Civ. 6260

Deft.

Luckman, William G.

Civ. 6260

Deft.

---

Lucky Seven Assortment, Net Count 120

Civ. 991

Plff.

Closed

Lucore, George

Civ. 7675

Closed

Deft.

Lucore, Sheridan J.

Civ. 9694



Deft.

Lucas Rule Co. Inc.

Closed  
Civ. 1971

Pltf.

LUCZAK, Edward J.

Civ-80-151

General Motor Acceptance Corp. & 1

Deft.  
LUCZAK, Paul W.

Closed Civ. 11,160

Closed

Plff.

Luczkowiak, Clemens

Giv. 826

Pltf.

LUDEMANN, Ronald J.

Civ-81\489F

Janice Cummings, etc.

LUDINGTON, H.F. INC.

(See H.F. LUDINGTON)

filed under H

Pltf.  
LUDLOW, Raymond L.

Cloned Civ-1967-227

Deft.

LUDWIG, Colonel Daniel D. Closed Civ-78-185

Closed Civ-78-628C



Pltf.

LUDWIG, George

Case # Civ-76-583

Deft.

Closed

Ludwig, George

Civ. 830

Pltf.

LUDWIG, Neil O.

Closed Civ-80-3E

Deft.

LUDWIG, Robert C.

Closed Civ-80-506E

Ray Marshall, etc.

closed

Deft.

Luffred, Peter Anthony

Civ. 6672 ...

Plff.

Closed

Lufkin, Merritt

Civ. 4300

Deft.

LUGER, Milton

Civ-75-14

PLTF

CIVIL 81-1008E

LUGO, Jose M.

NFTA

NFT Metro Inc



Pltf.  
LUGO, Nelson

Civ-79-1021

Deft.

LUIGI d'AMICO

Civ-1973-333

Pltf.

LUKASIEWICZ, Paul A.

closed Civ-75-123

Closed

Deft.

Lukasik, Charles Stanislaus

Div. 632

Plff.

Closed

Luke, Bernard

Civ. 3459

Deft.  
LUKE, Edith Griffin

Closed Civ. 10,769

570804

Deft.

Luke, Walter R.

Civ. 6472

<sup>DEPT.</sup>  
LUKEN, John J. , Member of  
the Town Board of Irondequoit

CIV-80-656B

Keith Red Elk



Pltf.

LUKOWSKI, Paul

Civ-80-349

Janice Cummings, etc. & 1

Plff.

Closed

Lukowski, Stella

Civ. 4847

Deft.

LULLO, Dan

Closed Civ-1973-532

Plff.

Closed

Lumbermen's Insurance Co.

Civ. 3754

Deft.

Lumbermen's Insurance Co. of Phil. et al

Ettoh Products Civ. 3792

Miceli Civ. 3860

pltf.

LUMBERMENS MUTUAL CASUALTY COMPANY  
INC., As suborgee of Dale Meseke

Closed  
Civ 78-790

Pltf.

LUMBERMENS MUTUAL CASUALTY ~~Closed~~ Civ-77-622

COMPANY Inc. as

Subrogee of Richard S.  
Northrup

Deft.

LUMBERMENS MUTUAL CASUALTY Closed Civ-1969-338  
COMPANY Closed Civ-77-553



Pltf.

LUMIA, ERIC

d/b/a V. J. Associates

Closed' civ. 74-486

Deft.  
LUMLEY, Robert

Civ-80-1082E

Buffalo Pipe & Foundry Corp., etc. & 1

Pltf.  
LUMPKIN, John Willie

Civ-81-417B(C)

Closed

J. B. Wilmont

Pltf.

LUMPKIN, Milton

Closed Civ-1970-521

Deft.  
LUNA, Charles

Civ. 11,822

~~Closed~~

So. Bflo Civ-1969-104

~~Closed~~

PLTF

CIVIL 81-427C

LUND, Richard

L&W Equipment; Harvey Weiss; Sidney Brown

Pltf.

LUNDBERG, HARRY F. SR.

Closed Civ-76-74

Deft.

LUNDBY, Harold F. Jr.

closed Civ-1971-13



Deft.

Closed

Lundell-Eckberg Mfg. Co., Inc.

Cty. 4799

Dept.

Closed

Lundgren, Fritz

Div. 2065

Deft.

Lundin, Paul H. Conklin Civ. 4597 Closed

Theal Closed 4595

Deft.

Closed

Lundquist, Marie Louise

Civ. 980

Pltf.

LUNDY, Litho

Civ-75-132

Deft.

LUNDY, Lorraine

Closed Civ-76-167

Deft.

Class

Lunetta, John

Civ. 209

DEFT

Closed CIVIL 80-216C

LUNGER, Dale C.

USA



Deft.

L'UNION DES ASSURANCES DE PARIS

-I.A.R.D.

Closed Civ-74-357

Deft.  
LUNN, Lillian M.

Closed  
Civ. 11,754

Deft.

LUNN, Truman W.

016390 Civ. 11,754

Pltf.

LUNQUIST, Timothy

Closed Civ-74-146

Deft.

LUNT, Samuel D.

Placed

Civ-1968-268

Pltf.

LUNZ, Joseph Edward Francis ~~vs~~ <sup>vs</sup> Civ-77-336

Deft.

LUONGO, Dominick N.

Closed Civ-1972-257

PLTF

Closed CIVIL 80-262

LUPER, James A.

Carl D. Mann & Mrs. Carl D. Mann



Pltf.  
LUPERCALIA MUSIC PUBLISHING CO.

Civ-81-294B(C)

Closed

AAA SOUND SERVICE, INC.  
RICHARD PETTY

Closed

Plff.

Lupica, Frank

Civ. 5063

Deft.

LUPINETTI, Dominic,  
individually and as Director  
and Chief Executive Officer  
of D.L. Dental Laboratories, Inc.

Civ-80-989B (c)

William Missert et al

Deft.

Lupo, John

Civ. 9506

010863

\*Lupold, Gary, Jailer  
(Ontario Cty Sheriff's Dept)

Civ 79-968

\*Gibeau, Jacques Pierre

Deft.

LUPOLD, Gary, Jailer

ClosedCiv-79-985

Closed

Deft.

Lupping, Rocco, Jr.

Civil 3698

Deft.  
LUPPO, Correction Officer

Civ-81-1011B(E)

Plf Eduardo Arias



Deft.

Closed

Luppo, Paul

Civ. 4560

Deft.

LURE CAMERA LTD.

Closed Civ-79-699 E

Plff.

Closed

Luria Brothers & Co. Inc.

Civ. 6566

Plff.

Closed

Lurie, Samuel

Civ. 6808

Plff.

Luscher, Emil

Civ. 3235

Plff.

Class

Lush, Reginald

Civ. 5674

Plff.

Cases.

Lush, Reginald G.

Civ. 4895

DEFT

CIVIL 82-115E

LUSS, Donald A.

USA



Pltf.

LUSTER, Charles

Closed CIV-1972-612

Pltf.

LUSTER, Edward L.

Closed

Civ. 11,136

Closed Civ-1967-276

Pltf.

LUSTER, Edward Lee

Closed

Civ-1966-51

Dept.

Closed

A. Lustig Inc.

Civ. 7292

CIVIL

Deft.

Lustig, Abraham , Mr. & Mrs.

Civ. 7282

Closed

Deft.

Lustig, Edward E.

civ. 3005

Deft.

Closed

Lustig Food Corp.

Civ. 7292

Deft.

LUSTIG FOODS, INC.

Closed Civ-1970-236



Deft.

LUTE, Robert H.

Closed

Civ-1971-549

Dept.

Closed

Lutgen, John R.

Civ. 9656

Closed

Deft.

Luther, Jr., Elmer M.

Civ. 9138

Deft.

Luther, Otto

1935  
73  
Closed

Div. 2420

Deft.

Otto Luther's Restaurant

Closed

Div. 2420

Pitf.

LUTHER, William F.

Closed Civ 1970-609

Deft  
LUTHERAN BROTHERHOOD

Civ-81-1028B(E)

Pltf THE COMMUNITY SAVINGS BANK

Closed

Deft.

Lutts, Richard H.

Div. 1025



Dept.

Lutts, Richard Harry

Civ. 977

Closed

Deft.

Lutz, Arnold

Civ. 3705

Plff.

Class

Lutz, Everett L.

Civ. 6631

Deft.

---

Lutz, Gertrude F.

Civ. 6691

Deft.

010806

N. R. Lutz General Contractors, Inc.- Malcuria-Civ.9148

Warren 9149

Cook's 9342

Pltf.

LUTZ, Robert E.

Civ-81-701B(C)

Deft: Loeb Rhoades Hornblower & Co. & 2

Pltf.

LUTZ, Robert G.

CloseoCiv-76-170

Deft.

LUTZ, Rollo D.

Closed Civ-76-203



Deft.

Closed

Lutz, Rowland R.

Civ. 9646

Plff.

11/10/53

Lutz, Patricia

Civ. 1140

Pltf.

LUX, Rose Theresa

Closed Civ-1972-433

Plff.

Closed

Luzana. Catherine

Div. 339  
3373

Misc.Civ.82-192

LYDON BROTHERS CORPORATION

Deft.

GEOTECH DEVELOPMENT CORP.

Pltf.

Deft.

LYELL RUTTER COMPLEX CORPORATION <sup>close</sup> Civ-1973-316

Pltf.  
LYELL THEATRE CORPORATION

Closed Civ-1971-571<sup>e</sup>  
Closed Civ-1972-136  
Civ-74-132

Deft.  
LYELS, James

Civ-80-1075E

Walter L. Jones Development Corp,



Closed

Plff.

Lyher, Lillian Grogan

Civ. 3344

Pltf.

LYKE, Ervin F.

Civ-77-646 B(E)

Pltf.

LYLE FOODS, INC.

Misc.Civ-78-4

Plff.

Closed

Lyman, Belle G.

Civ. 7692

Def't

Civ-92-350R(C)

LYMAN, Curtis, District Attorney of the  
County of Orleans

Plt'f LOCAL 1 of the United Food & Commercial  
Workers Union AFL CIO

Deft.

Closed

Lyman, Henry H.

Civ. 8425

Closed

Plff.

---

Lyman, James

Civ. 7272

Deft.  
LYN TRANSPORT, INC.

Civ-81-26B

Sea-Land Service, Inc. et al



Deft.

Closed

Lynaugh, John F.

Civ. 4157

Deft.  
LYNCH, Albert

Closed  
Civ-1969-121

Pltf.

LYNCH, Andrew

Closed Civ-1972-81

Closed

Plff.

Lynch, Caroline

Civ. 1778

Plff.

Lynch, Christopher J.

Closed

Civ/ 8644

Plff.

Lynch, Edward

Civ. 9090

Deft.

Civ-81-208B (E)

LYNCH COMMUNICATION SYSTEMS, INC.

R. G. Cook, Inc. d/b/a Cook Engineering

Plff.

Closed

Lynch, Edward

Civ. 9090



Deft.

LYNCH, Frank

Grand Civ-78-589

Closed

Plff.

---

Lynch, Gordon

Civ. 7291

Deft.

Closed

Lynch, Helen

Civ. 3622

Plff.

closed

Lynch, John J.

Civ. 7951

Deft.

Closed CIV. 79-162

LYNCH, JOSEPH

Closed

Deft.

Lynch, L. V.

Civ. 6994

Dept.

Closed

Lynch, Margaret

Civ. 802

Deft.

Closed Civ-79-534<sup>E</sup>

LYNCH, Merrill AND CO., INC.



Deft.

Closed

Civ-79-534<sup>E</sup>

LYNCH, Merrill, PIERCE, FENNER AND SMITH

Plff.

Closed

Lynch, Mrs. Minnie

Civ. 3344

Plff.

Lynch, Ruth

Closed

Civ. 9090

Plff.

Closed

Lynch, Stephen N.

Civ. 3344

Deft.

LYNCH, Thomas

Q3 on file Civ-78-553

Closed

Plff.

Lynd, Elizabeth S.

Civ. 8344

Deft.

Closed

Lynde, Victor

Civ. 61

Deft.

LYNG, Edward, Individually  
and as a police officer in  
the Police Bureau of the  
City of Rochester

Closed Civ-1971-24



Pltf.  
LYNGE, Earl

Closed Civ-1972-136  
Closed Civ-75-142

Deft.

LYNN, James T.

Closed Civ-74-280

Deft.

LYNN, James, Sec. of Housing &  
Urban Development

Closed Civ-1973-310

Deft.

LYNN, James T. as Sec. of Closed Civ-1973-113  
U.S. Dept of Housing & Urban  
Development

Close#Civ-1973-159

Closed

Plff.

Lynskey, Charles

Civ. 607

Plff.

Lyon, Dean A.

Bausch <sup>Closed</sup> Civ. 4168

Wollensak <sup>Closed</sup> 6135

Deft.

LYON, George W.

Civ-80-171 B

(C)

C. H. Stuart, etc.

Def't.

LYON METAL PRODUCTS, INCORPORATED ~~Loss~~ Civ-76-79



Deft.

Lyon Moving & Storage Company

Closed

Civ-80-665E

Franklin Traffic Services, Inc. & 1

Pltf.

LYONS, Alney

Close# Civ-77-324

Def't.

LYONS, Beverly

Closed

Civ-1969-406

PLTF

CIVIL 82-269E

LYONS, Charles G.

Frick Company

Deft.

LYONS, Gay B.

Classed Civ. 10,753

10,754

Plff.

Closed

Lyons, Grace Agnes

Civ. 4731

Plff.

Closed

Lyons, Helen

Civ. 3373

Plff.

Lyons, James

closed

closed

Civ. 7362

8256

Closed

Civ-1970-270

Closed

Civ-1970-348



Dept.

Class

Lyons, James E.

Civ. 5750

Plff.

Closed

Lyons, Jane Francis

Giv. 4731

PLTF

CIVIL 80-360

JTE

LYONS, Joan

City of Dunkirk, et. al.

Plff.

Closed

Lyons, John- H.C.

Civ. 6243

Closed

9172

Plff.

Closed

Lyons, John R.

Civ. 4731

Deft.  
LYONS, John W.

closed Civ-1972-441

Deft.

LYONS, K., Attica Correctional  
Officer

Closed

Civ-79-1005

DEFT

CIVIL 80-1011C

LYONS, K.L. C/O

Raymond Leach



DEFT

CIVIL 81-359C

LYONS, Kenneth, Corr. Officer

Johnny Muldrow

Deft.

LYONS NATIONAL BANK

Closed Civ-75-253

Deft.

LYONS NATIONAL BANK INC.

Closed Civ-78-861

Closed

Deft.

Lyons, Ray

Civ. 2231

Deft.

LYONS, Robert N.

Closed

Civ-1969-406

Deft.

LYONS, Timothy M.

Closed Civ-79-91

Deft.

Closed

Lyons Transportation Co..

Civ. 2938

Eaton Mfg Co

5660

" "

"Closed" 6408

Pltf.

LYONS TRANSPORTATION LINES, INC. <sup>Closed</sup> Civ-1967-388



Deft.

LYONS TRANSPORTATION LINES, INC. <sup>Closed</sup> Civ-1968-148

<sup>Closed</sup> Civ-1970-567

Closed Civ-75-133

Deft.

LYONS, Village of

Case Civ-77-562

Deft.  
LYONS, Vivian

Closed Civ. 10,532

Deft.

LYONS, William

gloses Civ-1973-379

Deft.

LYSIAK, Kenneth H.

Closed Civ-80-858E

United States of America

Deft.

LYTELL, Minnie George

Civ. 10,793

Pltf.  
LYTH, Alfred M.

Closed Civ-82-55C

Deft. R & L Morgan Corporation Profit-Sharing  
and Retirement Plan, et al.

Pltf.

LYTLE, Michael

Closure Civ-77-286



Pltf.  
LYTLE, Robert

Closed Civ-1970-107

Pltf.

LYTLE, William G.

d/b/a Florida Sunshine Properties

Closed Civ-1971-535

**M**

Pltf.

M.A. CANCELLA, INC.

Case Civ-76-229

Pltf.  
MCA, INC.

~~Class~~ Civ-81-252B(E)

PLTF

Closed CIVIL 81-148C

MCA, INC.

Charles L. Carr

Pltf.  
MCA, INC.

Civ-81-503B(E)

Deft: Astro Radio Communications Ltd. & 1

PLTF

CIVIL 80-679C

MCA, INC,

Pleasures & Pastimes



Pltf.

MCA INC.

Civ-1973-598

Closed Civ-74-5

Closed Civ-74-309

Pltf.

M. C. DARROW COMPANY INC

Closed Civ-74-4

Pltf.  
MCA, Inc.

~~Class~~ Civ-79-983 E

Deft.  
M-C International Inc.

*JTE*

Civ-80-372

Tzetzso Brothers Inc.

Deft

MISC CIV 83-102

M.C. MORGAN CONTRACTORS, INC.

Administrator, Wage & Hour Div. of Employment  
Standards Administration of US Dept. of  
Labor

Deft.

M.C. Morgan Contractors, Inc.

Civ-80-1027E

Ray Marshall, etc.

Deft

MISC CIV 83-71

MGM GRAND HOTEL - LAS VEGAS, INC.

Pltf American Protection Insurance Co.

Deft.

MHC AIRPORT INN, INC.

Civ-81-975B(E)

d/b/a Rochester Airport Holiday Inn

Pltf: C,H.K.R., Inc. etc.



Deft.

The M/V Niagara

Civ-80-795E

Royal Hydrofoil Cruises, Inc. & 1

Deft.  
The M/V Shiawassie

Civ-80-795E

Royal Hydrofoil Cruises, Inc. & 1

MISC CIV 85-17

M. BOHN & ASSOCIATES, LTD.

IN THE MATTER OF THE  
TAX INDEBTEDNESS OF

MISC CIV 85-18

M. BOHN & ASSOCIATES, LTD.

IN THE MATTER OF THE  
TAX INDEBTEDNESS OF

Deft.

M. W. Chase & Sons, Inc.

Civ-80-1026E

Closed

National Elevator Industry Welfare Plan, et al.

Deft.

Ma Barker's Garage & Speak  
Restaurant, LTD.

Closed Civ-78-786C

Fireman's Fund Insurance Co.

DEFT

CIVIL 80-766C

MACY, John, Director

Hoak's Restaurant

Deft.

M.C.J. CONSTRUCTION  
COMPANY, INC.

Closed Civ-74-92



Pltf.

M & C LEASING COMPANY, INC.

~~Closed~~ Civ-76-517

Deft.

M F B MUTUAL INSURANCE COMPANY closed Civ-1970-157

Deft.  
MFG BOAT

Closed Civ-75-292

Dept.

Closed

M & G Convoy Co.

Civ. 4644

7265

Deft.

M & C Concoys

Closed Civ. 78-524

Deft.

MGD GRAPHICS SYSTEMS, INC.

Closed Civ-1971-361

Closed Civ-1972-27

DEFT

CIVIL 81-332 *Closed*

MGM GRAND HOTELS, INC.

Maureen A. Mack

DEFT

CIVIL 81-333C Closed

MGM GRAND HOTELS, INC.

Frank J. Mack



deft.

M.J. FRENCH COMPANY, INC.

**Closed**

CIV-78-219

Pltf.

M. J. KELLEY CO.

Civ-74-210

Deft.

M.J.M. ASSOCIATES, INC.

MiscCiv.77-114

Pltf.

M M & K K INC.

Closed

Civ-78-190 *E*

Deft.

M. P. CLARK, INC.

Closed

Civ-1969-321

Pltf.

Civ-81-173B(E)

M.W., By her mother and next friend Mrs. W.

The Board of Education of the Rochester City  
School District

et al

Pltf.

MRI CONSTRUCTION and  
DIVING CORP.

Closed

Civ-1971-22

Deft.

Misc Civ 81-68E

M & T BANK - LOSS PREVENTION,  
Custodian of Records Pertaing to  
DONNA AND CHESTER ZUKOWSKI, JR.

U.S.A. & 1



Deft.  
M & T BANK

Closed 1V-79-889  
~~CIV 79-891~~

See: ~~BK-79-889~~

BK-79-2898

Pltf.

M & T CHIRICO, INC.

ClosedCiv-77-4

Deft.

M & T CHIRICO, INC.

Case# Civ-75-557

Pltf.

M & T Trust Company,  
See Dante Marasi

Closed Civ-80-83

Deft.

M & T TRUST CO.

Civ-78-243

Deft.

MT LIQUIDATING CORP.  
formerly Maley Thomas Corp.

Closed Civ-74-233

Deft.  
MTD PRODUCTS, INC.

*closed*  
Civ-81-226B (17)

Paula Morey, Individually *and* as Parent  
and Natural Guardian of Michael Morey,  
an infant

Deft.

M.V. JACQUELINE, her engines, closed  
tackle, apparel and furniture Civ-1969-226-A



DEFT

CIVIL 82-312E

M/V OTTERCLIFFE HALL, etc

Niagara Barge Corp & New England Petroleum  
Corp

Deft.

M/V "SPLIT" VESSEL  
JUGOSLAVIA

~~0108~~ 01v-1972-502

Deft.

MAAL, Eduardo S.

Closed Civ-77-500 E

*Robert M. Board*

Pltf.

MA BARKER'S GARAGE & SPEAK  
RESTAURANT, LTD.

closed Civ-76-454

Deft.

MAAS, Hyman

*MAAS, Hyman T.*

Civ-77-135

*Civ-80-9788(E)*

Deft.

MA BARKER'S GARAGE  
& SPEAK RESTAURANT, LTD.

Close/Civ-76-408

Deft.  
MABREY, Barbara

Closed Civ-79-1003

Pltf.

MACADAM, Lawrence D.

Closed

Civ-79-658



Dept.

MACALUSO FIRE REPAIRS, INC.

243  
Civ-78-243

Deft.

MACALUSO, Michael

Civ. 9663

Deft.

MACALUSO, Officer \_\_\_\_\_ closed Civ-1973-111

Deft.

MACAMEIA, Officer

Class# Civ-75-303

Deft.

Closed

Elbow Macaroni, 39 cases

Civ. 1867

Ribbon Macaroni, 116 cases, etc. ~~Closed~~ Civ-1972-224

Dept.

Closed

MacArthur, Henry C.

Civ. 4545

Deft.

MacARTHUR, Ronald

Closed Civ. 10,531

Deft.

MACARTHY, Correctiona officer      Civ-78-575C

Closed

Kenneth Bradley



Class

Plff.

Macaulay, Gordon

Civ. 5520

Closed

Plff.

MacAuley, Kenneth

Div. 1246

Deft.

MACAULEY, John C.

Closed

Civ-1969-425

Deft.  
MACAULY, Douglas

Closed  
Civ-1968-4-A

Deft.

MACAULY, Veronica D.

Closed Civ-1968-4-A

Deft.

MacBLANE, Thomas

Closed Civ-74-481

Plff.

Closed

Maccabees Mutual Life Insurance Co.

Civ. 9976

Deft.

MACCALLUM, F. H.

Closed Civ-1971-232



Deft.

MacCALLUM, Dr. James D.

Closed Civ-1969-4

Deft.

MACCARONE, John

Closed

Civ-1967-331

Pltf.

MacCAUD, Norman D.

Closed Civ-1972-476

Closed Civ-1972-543

Pltf.

MacCAUD, Norman Douglas

Closed Civ-1972-476

Closed Civ-1973-563

Deft.

MACCO M-505 STABILIZER

closed Civ-1968-115

Plff.

Closed

MacCullough, etc.

Benedict

Civ. 3232

Class

Dept.

MacDiarmid, Fannie

Civ. 5699

Deft.

Class

MacDiarmid, John

Civ. 5699



Closed

Deft.

MacDiarmid, John K.

Civ. 5699

Deft.

MacDonald, Colin Jr. & Sr. - Smith

Civ. 6684

Govt. Closed

6881

 Closed

Dept.

MacDonald, H. C.

Div. 2612

Plff.

Case

MacDonald, Irene P.

Civ. 4840

Plff.

Class

MacDonald, Kenneth Bruce

Civ. 4840

Deft.

MAC DONALD, Robert D.

Closed

Civ-1966-208

Deft.

MAC DONALD, Robert L.

Closed

Civ-81-693E

United States of America

Dept.

Glad

MacDonald Trucking Co.

Civ. 7687

7688



Deft.

MacDougal, Merle

Civ. 9942 closed

closed 9943

Deft.

closed

MacDougal, Morle J.

Civ. 9533

Pltf

Closed

MacDuffie, Cecil

Civil 80-10

Normay Corp.

Deft.

Closed

Nace, 8 cases

Civ. 5586

Deft.  
MACEDO, Roberta R.

Closed Civ-79-780

*JTC*

Deft.

~~Class~~

MacFadden, Robert

Civ. 5765

Deft.

MacFARLANE, Elizabeth

Closed

Civ-1967-361

Dept.

Closed

MacFarlane, Louise A.

Civ. 243



1963

Deft.

MacFarlane, Thomas J.

Civ. 243

Deft.

MacFAYDEN, Edward G.

Closed

Civ. 11,391

Deft.

MacGAMWELL, Allen H.

Closed Civ-1971-122

Deft.

MACGREGOR ATHLETIC PRODUCTS

**Closed** Civ-79-852

Deft.

MACH BEVERAGE COMPANY      Closed Civ-1973-332

Deft.

HACH, Edwin

Closed Civ-1972-290

Pltf.  
MACHADO, Richard

Closed Civ. 11,653

(2)

Plff.

Closed

Machado, Richard

Civ. 9986

Closed 10219

Closed 10266

Closed 10,608

Closed 10,661

Closed 10,788

Closed 11,079

Closed 11,163

Closed 11,164

Closed 11,634



Pltf.

MACHAN, John J.

Closed Civ-1970-427

Plff.

Macharski, Michael

Closed Div. 1155

C10866

Dept.

Machelor Maintenance & Supply Corp.

Civ. 9774

USA closed 10,535

Deft.

010901

Machelor Richard L.

Civ. 9774

Plff.

Closed

Machelski, B. J.

giv. 3373

Dept.

Class

Machen, Billy Tom

Civ. 5509

Deft.

MACHINENFABRICK, Walter Stadel ~~Closed~~ Civ-1969-268

Fleischman ~~Closed~~ Civ-1969-278

Closed

Pliff.

Machulis, John

Civ. 1883



Plff.

Closed

Machulis, John P.

Div. 602

Deft.

MACIEJEWSKI, (Long) Holly L.

Closed

Civ-81-16E

United States of America

Deft.

Closed

Maciejewski, Leo

Div. 1990

Plff.

Maciejewski, Anna

Closed

Div. 3373

Deft.

MACIKI, CORRECTION OFFICER

Civ-76-78

Deft.

MACIOROWSKI, Richard

Closed Civ-75-41

Pltf.

MACISCO, Michael

.losedCiv-76-116

PLTF

CIVIL 81-34C

MACIUSKA, Philip & Sadie

Proctor & Gamble



Pltf.

MAJCHRZAK, David E.

Closed Civ-80-873C

Alexander Clifford, etc. & 1

Deft.

MACK, Al, as Associate  
of Ruttenstein and  
Associates, Division of  
Tax Facts, Inc., Custodian  
of Records Pertaining to  
DEXTER PHARMACY, INC.

Misc.Civ-82-105C

Pltf. U.S.A. & William Haslinger of the  
Internal Revenue Service

Deft.

MACK, Al, as Associate of Misc.Civ-82-116C  
Ruttenstein and Associates,  
a Division of Tax Facts, Inc.  
Custodian of Records Pertaining  
to IRVING LEFF

Pltf. U.S.A. and William Haslinger of the  
Internal Revenue Service

Plff.

Hack, Austin

Closed

Civ. 3387

Pltf.

MACK, Carlene

Civ-76-22

Pltf.

MACK, Charles

ClosedCiv-78-9

DEft

MACK, Claude

Closed Civ-78-430

Pltf.

MACK, David E. a/k/a  
David E. Majchrzak

Closed Civ-80-873C

Alexander Clifford & 1



Deft.

MACK FINANCE CORPORATION

Closed Civ-79-999

PLTF

CIVIL 81-333C Closed

MACK, Frank J.

MGM Grand Hotels, Inc.

Plff.

Closed

Mack, Geneva E.

Civ. 3344

Deft.

Closed

Mack, James B.

Civ. 7709

Plff.

Closed

Mack, James E.

Civ. 3459

Deft.

MACK, John, Correction Officer Closed Civ-74-165

Attica

~~610899~~

Civ-76-608

Civ-77-344

Pliff.

Hack, Maude

Closed

Div. 3373

PLTF

CIVIL 81-3320 Closed

MACK, Maureen A.

MGM Grand Hotels, Inc.



Deft.

Closed

MACK OIL COMPANY

Civ. 10,365

Dept.

1957

Mack, Olive J.

Civ. 7709

Pltf.

MACK, Reginald

Closed Civ-1967-91

Closed Civ-1967-226

DEFT

CIVIL 80-914C  
915C

MACK, Richard

Joseph Johnston  
Ronald Johnson

PLTF

CIVIL 80-915C  
914C

RICHARD MACK

Joseph & Ronald Johnston

Class

Plff.

Mack, Steve

Div. 574

Deft.  
MACK TRUCKS, INC.

Closed Civ-1968-61

Deft.

---

Mack; Virginia C.

Civ..6676



Dept.

Mack, Walter

7188

Civ. 7188

Deft.

Mac, Kayn B ros. & Band Inc.

Civ. 7673

Plff.

Closed

MacKenzie, William H.

Civ. 7822

Dept.

Closed

Mackerel, 171 cases

Civ. 5727

1100 cases Cal.

2116

Closed

Deft.

Closed

Mackey, Argyle

Civ. 5843

Deft.

~~Class~~

Mackey, Henrietta

Civ. 4475

Plff.

Closed

Mackey, Howard E,

Civ. 3533

Closed

7965

Pltf.  
MACKEY, John W.

Closed Civ-1972-41  
Closed Civ-1972-541  
Closed Civ-1972-544  
Closed Civ-1973-37  
Closed Civ-1973-399



Pltf.  
MACKIE, Harold A.

Classified CIV-80-652B

Patricia Harris, sec HEW

Pltf.  
MACKIE, Janine

*Closed* CIV-80-652B

Patricia Harris, Sec. of HEW

Pltf.  
MACKIE, Jeffrey

*Closed* CIV-80-652B

Patricia Harris, Sec. of HEW

Pltf.  
MACKIE, Joseph

Class CIV-80-652B

Patricia Harris, Sec. of HEW

Pltf.  
MACKIE, Mary

*Class* CIV-80-652B

Patricia Harris, Sec. of HEW

Deft.

MACKIMER, Sheldon

Closed Civ-75-397

Deft.

MACKIN, William J.

Closed Civ-1973-233

7  
Deft.

MACKMER, Frederick W.

Closed Civ-1972-105



Closed

Plff.

Mackowsk, Joseph A.

Div. 3373

Deft.

MACKWORTH G. REES, INC.

Closed Civ--1968-147

Plff.

Closed

MacLachlan, Anna K.

Civ. 6196

010003

Plff.

MacLachlan, Thomas B.

Civ. 6196

Deft.

James MacLaren Co. Ltd.

Civ. 9319

Closed

Pltf.

MACLAREN, Owen Finlay

Closed Civ-1971-199

Deft.

Closed Civ-79-535

MACLAUGHLIN, Ronald

DEFT

CIVIL 81-634C

MacLENNAN, Colin

Ellis Clanton aka Clay Williams



Pltf.  
MACLIN, Robert

closed Civ-1972-343

Pltf.

MAC MILLAN, Doris M.

Civ-76-163

Off.

MacMillan, Robert Hugh

Post

Civ. 9221

Defy.

Closed

MacMullen, Charles

Civ. 7020

7021

PLTF

CIVIL 81-955E

MacNEIL, Dary (See: Paul D. MacNeil)

USA & US Postal Service

Pltf.  
MacNEIL, Daryl

Civ-81-279E

United States of America  
United States Postal Service

DEFT

CIVIL 81-955E

MacNEIL, Paul (also see: Dary MacNeil)

USA & US Postal Service

Pltf.  
MacNEIL, Paul

Civ-81-279E

United States of America  
United States Postal Service



Deft.

Closed

MacNetton, Fred

Div. 937

Deft.

MACOMBER, Esther M.

Closed

Civ-1969-4

Deft.

MACOMBER, Ralph L.

Closed Civ-1969-4

Closed

Plff.

Maacoff, Morris

Div. 3373

Class

Alff.

MacPhail, Donald

Civ. 5186

Deft.

Closed

MacPherson, Hugh G.

Civ. 6114

Deft.

Closed

MacPherson, Renton

Div. 323

Dept.

Closed

MacPherson, Mrs. Renton

Div. 323



DEFT

CIVIL 80-1163C

MacQUEEN, Paul, as an officer and Local  
Chairman of Lodge #66 of the Brotherhood  
of Maintenance of Way Employees

Stanley Mroz

deft

MacQueen, Paul

Closed Civ 780856

Deft.

closed

Macri, Francis M.

Civ. 8960

Plff.

Edward

Macsh, Jewel Inell

Div. 344

Deft.

MaCTURK, James

Closed Civ-76-298

Deft.

MACVITTIE, Robert

closed Civ-75-322

Deft.

MacVITTIE, Robert W.  
as President of the State  
University of New York,  
College of Arts and Science  
at Geneseo

Closed Civ-1971-31

Deft.

Closed

MacWilliams, Roger

Civ. 8823



Dept.

closed

MacWilliams, Virginia

Civ. 8823

Def't.

MACY, John W. Jr.

Closed Civ-1966-74

Deft.

MACY, John W., Jr., Director  
of the Federal Emergency  
Management Agency

Closed

Civ-78-190E

MM & KK, Inc.

Deft.

MADAR, Harold

Closed civ-1972-290

Pltf.

MADAR, Lawrence T.

Cl~~o~~sed Civ 1970-609

Closed

Dept.

Maday Body & Equipment Corp.

Civ. 9001

Deft.

Maday, Violet

Civ. 7952

Plff.

Closed

Madden, Francis T.

Civ. 5547



Deft.  
MADDEN, John

Closed

Civ-81-842C

Pltf. Ann Walters

Deft.

MADDEN, John T., Jr.

Civ-75-281

Closed Civ-75-425

Dept.

Madden, William M.

Civ. 9068

IN RE

MB 83-10E

MADDOX TABLE CO., INC.

BK 83-10456 M

Pltf.

MADDOX, Charles Edward, Sr.    Close#Civ-1972-632

Plff.

Maddox, Elsie H.

Closed

Civ. 3344

Plff.

Maddox, Eugene

Closed

Civ. 3344

Plff.

Closed

Maddox, John

Civ. 3344



Closed

Deft.

Maddox, Kale

Civ. 4496

Deft,

MADER CORPORATION

Closed Civ-1973-218  
Closed Civ-75-114

Deft.

The MADER CORPORATION  
EMPLOYEES PENSION SHARING  
TRUST

Closed Civ-75-114

Deft.

The MADER CORPORATION EMPLOYEES Closed Civ-75-114  
PROFIT SHARING TRUST

Def't.

THE MADER CORP.

Closed Civ-1970-81

Deft.  
MADER PLASTERING CORP.

Closed  
Civ. 11,716

Pltf.

MADER PLASTERING CORP.

Closed

Civ-1966-62

Closed

Deft.

Mader Realty Inc.

Div. 682



Deft.

MADIA, Louis

Closed <sup>Qiv-77-713</sup>

Dept.

Madigan, Gerald

Class

Civ. 5313

Plff.

Madigan, William W.

Closed

Giv. 7371

Deft.

MADISON EQUIPMENT CO, INC,

Misc Civ  
78-92

Deft.

MADISON SQUARE GARDEN CENTER, Closed Civ-77-32  
INC., A N.Y. Corporation

Deft.

MADISON SQUARE GARDEN CORP.

Civ-76-261

Ptlf.

MADISON TAXI OF BUFFALO, INC.

Closed CIV-78-152

Deft.

Closed

Madison Wire Co. Inc.

Civ. 3257



Pltf.

MADJESKI, Jan

Closed Civ-77-34

Deft.  
MADONIA, Anthony

Closed Civ-1971-342

Pltf.

MADONIA, Anthony S.

Civ-81-659E

Deft.: U.S.A.

deft

MADTINEZ, Edward C.

closed Civ 78-754

Piff.

Maeazita, Frederick

Closed

Civ. 3268

Closed

Plff.

Maeder, Arthur J.

Civ. 3519

Pltf.

MAERTEN, Douglas J

Closed Civ-1973-359

~~Closed~~Civ-74-36

Deft.

MAERZ, Robert P.

Closed Civ-30-946B

United States of America



Deft.

MAFFUCCI, Deputy Comm.

Civ-80-1097E

William Billups

Deft.

MAFFUCCI, Deputy Commissioner

Civ-80-618E

Cliften L. Crawford

Deft.

MAFFUCCI, Mr. . . .

ClosedCiv-78-595

Deft.

MAFI-TRENCH CORP., et al.

Misc.Civ. 80-270

Deft.

MAGAHA, Stephen A.  
a/k/a Mike Johnson

closed Civ-74-277

Deft.

MAGAVERN, Samuel D., Executor  
of the Estate of  
Thomas W. Doran

Civ-78-243

Pltf.

MAGAVERN, Samuel D., as Closed  
Executor of Estate of  
Margaret C. Duncan

Civ-74-405

Deft.

Closed

Magavero, Horace H.

Civ. 2187



Class:

DEFT

CIVIL 81-815E

MAGBY, Clarence D.

USA

Deft.

MAGEE, Alan Russell

Close# Civ-1972-662

Pltf.

MAGEE, Clara

~~Case~~ Civ-79-305 E

Plff.

Wages, Mildred

Civ. 3272

Deft.

MAGEE, Robert

Closed Civ-76-587

Deft.  
MAGEE, Robert

Closed  
Civ. 11,368

Deft.

Closed

Mager, Jr., Charles

Civ. 5899

Deft.

MAGES, Robert G.  
d/b/a AVENUE MUSIC CENTER

Closed

Civ. 10,807



Plff.

Closed

Magette, Joseph X.

-McGinnis

Civ. 9384

"

9454 ~~11384~~

"

9455 ~~11384~~

9395

Deft.

---

Maggio, E. Ruth

Civ. 7042

Deft.

MAGGIO, Fred

Civ-75-327

Deft.

Closed

Maggio, Jean Marie

Civ. 7042

Deft.  
MAGGIO, Jim, Nurse

Civ-81-39E

Richard Utley

Dept.

~~CLASS~~

Maggio, Maggie

Civ. 7041

Deft.

Closed

Maggio, Michael F.

Civ. 7041

Deft.  
MAGGIO, Rose

1967

Civ-1967-204



Deft.  
MAGGIO, Samuel

Case Civ-1967-204

Closed

Pltf.

MAGGIORE, Edward R.

Civ-1967-31

Pltf.  
MAGILL, James D.

Closed Civ-1967-158

Deft.

MAGLIARDITI, Frances

Closed Civ-1973-421

Deft.

MAGLIARDITI, Peter

Closed Civ-1973-421

Dept.

Class

Magliardito, Joe

Div. 314

Deft.

In the Matter of the Tax

Misc Civ-79-182

Indebtedness of MAGNA EXHIBITIONS, INC.

Deft.  
MAGNA EXHIBITION, INC.

Misc Civ-79-180



Misc Civ' 80-100

In the Matter of the Tax Indebtedness of:

MAGNA EXHIBITIONS, INC.

USA

IN THE MATTER OF TAX  
INDEBTNESS OF:

Misc. Civ-80-99

MAGNA EXHIBITIONS, INC.

IN THE MATTER OF THE TAX  
INDEBTNESS OF

Misc. Civ-80-59

MAGNA EXHIBITIONS, INC.

IN THE MATTER OF THE TAX  
INDEBTEDNESS OF:

Misc Civ 80-92

MAGNA EXHIBITIONS, INC.

deft

MAGNA EXHIBITIONS INC

MISC CIV 79-32

Magna Exhibitions Corp.

PICF.

Closed civ. 78-476 E

Deft.  
Magnano Brothers, Inc.

Closed Civ-80-403E

United States of America

Pitf.

MAGNANO BROS. INC.

ClosedCiv-74-17



Deft.  
MAGNANO, Louis

Closed Civ-80-403E

United States of America

Deft.

MAGNATHERM (Short Wave  
Therapy Equipment)

Class<sup>2</sup> Civ-1972-361

Deft.

C10864

Magnavox Co.

Civ. 7478

PLTF

CIVIL 81-34C

MAGNER, Michael & Barbara

Proctor & Gamble Co.

Plff.

Closed

Magro, Frank J.

Civ. 3841

Deft.  
Magtrol, Inc.

Closed Civ-80-1115E

Ernestine Farifax

Deft.

Closed Civ. 78---396

Maguire, Chauncey H.

Deft.

Closed

Maguire, Frank J.

Div. 1136



Deft.

MAGUIRE, John D.

Closed Civ-75-322

Maguire, Kevin Thomas

Misc.Civ. 80-221

Pitt.

\*MAGUIRE, TERESA ANN (P)

CIV 79-1002

\*Alvin Robinson

Pltf.  
MAGUIRE, Thomas

Closed Civ-77-518

Deft.

MAGUIRE, Thomas G.

~~Closed~~ CIV-80-458B

USA

Pltf.

MAGUIRE, Thomas G.

Civ-77-244

Plff.

Closed

Maguire, Thomas W.

Civ. 5976

Deft.

MAHALO CORPORATION.

Misc.Civ. 76-3



ptf.

MAHAN, Edward

Close Civ 78-784

Deft.

MAHAN, K., Correctional Officer

Civ-81-524E

Kevin James Goode

Deft.

Mahaney, Patrick E.

Civ. 9185

Closed

Deft.

Mahansy, Phyllis

Closed

Civ. 9185

Closed

Deft.

Mahany, Joseph

Civ. 6539

Pltf.

MAHANY, Patrick E.

Closed

Civ-1969-321

Pltf.  
MAHAR, Betty A.

Closed Civ-1972-394

Deft. ....

Mahar, Francis J.

Closed?

Civ. 7197



Closed

Plff.

Mahar, John W.

Civ. 2123

Pltf.

MAHAR. Maraget

210304 Civ-77-562

Deft.

Closed

Mahar, Mary

Div. 2006

Closed

Deft.

Maher, Eleanor M.

Civ. 1202

Pltf.  
MAHER, James Patrick

Closed  
Civ-1966-90

Plff.

Closed

Mahon, Gloria

Civ. 9776

Plff.

Mahon, Richard

Civ. 9776

~~Closed~~

Plff.

11028A

Mahoney, Bernard J.

Civ. 6535



Deft.  
MAHONEY, Edward J.

Closure Civ-81-842C

Pltf. Ann Walters & 1

Deft.

MAHONEY, Edward J., as

Civ-80-1021E

Commissioner of the Erie County  
Board of Elections

John Ziegler & 1

Plff.

Closed

Mahoney, Edward J.

Civ. 6535

Deft.

MAHONEY, Edward J.

Closed<sup>d</sup>Civ-74-455

ClosedCiv-75-468

Civ-75-475

Closed<sup>d</sup>

Def't.

MAHONEY, James

Civ-1973-368

Plff.

Closed

Mahoney, James

Civ. 7795

Deft.

Mahoney, James

Civ. 10,064 Closed

Pltf.

MAHONEY, John Kevin

*Closed* Civ-76-507

*Closed* Civ-78-182

*Closed* Civ-79-728

*Closed* Civ-79-729



Plff.

Closed

Mahoney, Joseph

Civ. 6540

Deft.

Closed

Mahoney, Joseph F. -So. Bflo.

Civ. 8733

Detroit

Closed 8889

So. BfloClosed Civ-1969-104

Pltf.

MAHONEY, Rosemary

~~Closed~~ Civ-76-507

~~Closed~~ Civ-78-182

~~Closed~~ Civ-79-728

~~Closed~~ Civ-79-729

Deft.

MAHONEY, Hon. Walter J.

ClosedCiv-75-242

ClosedCiv-75-100

Closed

Deft.

Mahoney, William

Civ. 3705

Civ-79-62

Civ-79-63

Deft  
MAHONEY, William

Civ - 79-62B(E)  
Civ - 79-65B(E)  
Civ 79-66  
Civ 79-67  
Civ 79-68  
Civ 79-69  
Civ 79-70

Deft.

MAHONEY, William B.

ClosedCiv-1972-82

Deft.  
MAHONEY, William C.

CIV-80-472B (E)

Delbert Wm. Ode



Deft.

MAHONEY, William C.

Closed Civ-75-424

Deft.

Closed

Mahoning Steamship Co.

Johnston Civ. 1147  
Closed 4716

Pltf.  
MAHSHIE, George

Closed Civ-1971-576

Dept.

Maid of the Mist Steamboat Co., Inc. Closed Civ. 7542

Closed 7557

Dept.

Class

Maida, Francesco

Div. 204

Deft.

MAIDA, Kenneth

Closed Civ-1973-247

PLTF

CIVIL 81-1067E

MAIDA, Marie B.

Twin Fair, Inc.  
Hens & Kelly, Inc.

Delt.

MAIDSTONE SHIPPING CORP.

closed Civ-75-510



Deft.

Closed

Maier, Paul

Civ. 2565

Deft.

Closed

Mailler, Lee B.

Civ. 8857

Deft.

Mailloux, Cecelia R

Closed

Civ. 6288

Closed

Deft.

Mailloux, George

Civ. 6288

Deft.  
MAILROOM SUPERVISOR  
(Individually and in Official  
Capacity) at Ossining  
Correctional Facility

Closed

Civ-82-9C

Pltf. Allan Grigsby

Def't.  
MAIMONE, Bart

see  
MAIMONE, Bartolo

Deft.

MAIMONE, Bartolo  
a/k/a BART MAIMONE and  
as BART MAIMORE, d/b/a  
METRO PETROLEUM  
DISTRIBUTING COMPANY

Closed

Civ. 10,559

Def't.

MAIMORE, Bart

see MAIMONE, Bartolo



PLTF.

MAIN -AMHERST BUSINESS ASSOCIATION <sup>Closed</sup> Civ 78-590  
Inc. on its own behalf and on behalf  
of all others similarly situated.

Plff.

---

Main Building Maintenance Co.

Civ. 6670 Closed  
Closed 6671

Deft.

Olson

Main Investment Co. -V.Wescott

Civ. 5342

J. "

5343

Deft.

MAIN LAFRENTZ & CO.

Civ-76-16  
Civ-79-36

Plff.

Main Street Book Shop Inc.

Closed

Civ. 10,064...

Deft.

22 West Main Street Inc.

Closed

Civ. 11,097

Dept.

Closed

Main St., 17,890 sq. ft. space

Civ. 1545

Deft.

MAIN-TRANSIT ENTERPRISES, INC.

Closed

Civ-1968-285



Closed

Dept.

Main Window Cleaning Co. Inc.

Civ. 8831

Deft. Int.

MAINE CENTRAL RAILROAD

Closed Civ. 11,055

Deft.

Closed

Maine Central Railroad Co.

Civ. 5490

Plff.

Mainelle, Michael

~~Person~~ ~~Class~~  
Civ. 4405

Closed

Deft.

Main St. Garage

Civ. 108

Pltf.

MAIN TRANSIT TAXI SERVICE, INC. Civ-82-217C

Deft. United States of America, et al.

Deft.

MAINE MARINERS

Case# Civ-77-544

Deft  
MAINE SAVINGS BANK

MISC CIV 85-23

Pltf Banc One Corporation



Deft.

MAINE SUGAR OF MONTEZUMA, INC.

Closed

Civ-1970-48

PLTF

Closed

CIVIL 81-688C

MAINTENANCE PAINTERS' UNION LOCAL No. 1581

Hotel Lafayette

Deft.

MAIORANA, Joanne M.

Closed Civ-1967-109

Pltf.  
MAIRA, George R.

Closed Civ-81-10E

Hooker Chemicals & Plastics Corp., etc.

Deft.

closed

Maischoss Tree Expert Co. Inc.

Civ. 8194

Deft.

MAISEL, Frederick J. Closed Civ-1967-277

Plff.

Maisel Furniture Co., Inc.

Closed

Civ. 3455

Pltf.

MAISEL, Harry W.

Closed Civ-75-548



Deft.

MAISLIN BROTHERS TRANSPORT *Closed* Civ-1968-241

Deft.

MAISLIN BROTHERS TRANSPORT, LTD

Closed Civ-1969-48

Civ-1970-10

Closed Civ-1969-343

Closed Civ-1969-330

Pltf

MISC CIV 85-77

MAISLIN TRANSPORT of DELAWARE, INC.

Judgment Registration  
(Eastern Dist. of Michigan)

Deft     Styer's Collision & Painting Inc.

Pltf

MISC CIV 85-76

MAISLIN TRANSPORT of DELAWARE, INC.

Judgment Registration  
(Eastern Dist. of Michigan)

Deft Casey Truck Sales, Inc.

Pltf

**Closed** CIVIL 80-158 (JTE)

MAISON, Howard

Harold J. Smith, Supt. of Attica

Pltf.

MAISONNADE, Robert L.

Closed

Civ-1969-465

Pltf.

MAITRE, Joseph H.

Civ-80-678E

Consolidated Rail Corporation

PLTF

CIVIL 80-399 jtc

MAJEEB, Leta Mahasin

March of Dimes-Birth Defect Foundation



Pltf.

MAJEED, Nasar

close Civ-77-342

pltf

MAJEREK, Henry

Cloned Civ 79-274 JTE

Plff.

Majeski, Frank

Civ. 3235

Deft.

Classed

Majestic, 34 gross

Div. 257

Deft.

MAJESTIC POOLS, INC.

Case Civ-76-121

Pltf.

MAJEWSKI, Richard

Closed

Civ-1967-306

Pltf.

MAJEWSKI, Richard S.

Closed

Civ-1969-455

Closed Civ-1970-18

Closed Civ-1970-22

Pltf.

MAJEWSKI, Thaddeus J.

Closed Civ-1971-42

Closed Civ-1971-273



Deft.

Closed

Hajlarz, Matthew

Civ. 10,013

Def't.

MAJIK-IRONERS, INC.

Misc.Civ-76-106

Plff.

Civ.

Majka, Joseph J.

Civ. 6104

Deft.

MAJKSZAK, Arthur J. *closed* Civ-79-410

Deft.

Closed

Major, Howard D.

Civ. 7968

Closed Civ-1968-422

closed

Deft.

Major, Leah

Civ. 7968

Closed Civ-1968-422

Deft.

MAJOR, Robert H.

Misc.Civ.81-100B(C)

Pltf. U.S.A.

Def't.

MAJOR, Robert H., as a Partner  
of Robert H. Major & Ronald F.  
Kane, Ptr., D.B.A.  
Hotel Sallen

Misc.Civ.81-101B(C)

Pltf: U.S.A.



Pltf.

MAJORS, John

closedCiv-74-25

Deft.

Majors, Mabel A.

Civ. 7524 Closed

Closed Civ-1967-391

Deft.

Majors, Taylor

Civ. 7524

Closed

Civ-1967-381

Closed

Plff.

Closed

Makawile, Paul J.

Civ. 3459

Plff.

Makely, Arthur K.

018904

Civ. 9900



DEFT.

MAKELY, Donald J.

Global Civ-77-399

Pltf,  
MAKER, Keith E.

~~Closed~~ Civ. 11,293

Deft.

MAKEY, George G.

Civ-77-135



Pltf.  
MAKEY, Robert

Closed Civ-1970-252

Deft.

MAKO COMPRESSORS, INC.

Civ-77-133

Plff.

Closed

Makowiec, Peter J.

Civ. 3459

Deft.

MAKOWSKI, Stanley J.

Closed Civ-75-24

Closed Civ-76-256

Deft.

MAKOWSKI, Stanley M.  
Mayor City of Bflo.

Close# Civ-1972-535  
Civ-1972-325  
Close# Civ-76-156  
Close# Civ-76-233

Deft.

Closed

MAKRIDES, George A.

Civ. 7306

Deft.

MAKRIDIS, Stamos

~~Class~~ Civ-79-412

HPB

01044

Deft.

Maksymik, John J.

Civ. 6591



Deft.

Makyes, Floyd

Civ. 3705

Closed

Resp.

Closed

Malabar Rauwolfia Root, 4 Drums

Civ. 6438

Deft.  
MALACH, Raymond J.

Misc.Civ-82-241C

Pltf. U.S.A. and Revenue Officer Samuel A.  
Messina

Plff.

Closed

Malachowski, Frances

Civ. 324

612000

Dept.

Malan Construction Co.	- Gizio	Civ.	8695
	Saia		8696
	Stopinski		8697
	McCowan	closed	8827

Closest

Dept.

Malan Plumbing Co. Inc. - Ric-Wil - Civ. 5274

Kaiser Closest - 5433

Deft.

Malaney, William H.

Closed

Div. 3050

closed

Plff.

---

Malanowski, Joseph H.

Civ. 7079



Plff.

Closed

Malast, Helene

Civ. 3319

Pltf.

MALAVSKY, Rhoda

Case: Civ-76-605

J.T.

Pltf.

MALCHOW, Fred James

Closed Civ-1969-180

Pltf.

MALCOM, Keith d/b/a  
Malcom Marine

Closed Civ-80-804E

THE VESSELS NOW KNOWN OR FORMERLY KNOWN AS THE  
J.P. MORGAN, JR., ET AL.

Pltf.

Malcom Marine

Closed Civ-80-804E

THE VESSELS NOW KNOWN OR FORMERLY KNOWN AS THE  
J.P. MORGAN, JR., ET AL.

Deft.-

MALCURIA BROS. INC.

Close&Civ-76-79

Plff.

Closed

Malcuria Bros. Inc.

Civ. 9148

Deft.

Closed

Male, George H.

Civ. 6291



Deft.

Closed

Male, PAggy

Civ. 4460

Plff.

Closed

Malecki, Charles A.

Civ. 3319

Deft.

Closed

Malecki, Joseph

"

"

Div. 1673  
Closed 2394

PLTF

CIVIL 81-318E

MALECKI, Stanley & Jennie

Pittsburgh Corning Corp, et. al.

Plff.

Closed

Males, Russell N.

Civ. 9578

Pltf.  
MALESCHUSKY, Paul

Closed Civ. 10,968

Plff.

Class

Maletta, Frank.

Civ. 5845

Deft.

MALEY, John P.

Case Civ-74-233



Deft.

MALIBU ENTERPRISES, INC.

Closed Civ-77-121

Deft.

MALICAN, William V. III

Closed Civ-1969-133

Dept.

Hall, Joe.

Div. 1712

Deft.

MALIBU ENTERPRISES, INC.

Closed Civ-75-329

PLTF

CIVIL 81-504C

MALIK, Abdul-Jabbar

Harold J. Smith, Warden, Attica

Pltf.

MALIK, Mustafa Abdul

See GUTKOWSKI, Eugene

Deft.  
MALIN, William N.

Closed

Civ-80-209

U.S.A

Pltf.

MALINISH, Evelyn

Closed Civ-1973-322



Pltf.

MALINISH, John A.

Closed Civ-1973-322

Deft.

MALINOWSKI, Arthur B

Closed Civ-1973-31

Pltf.

MALINOWSKI, Thomas A.

Closed civ-1971-545

Deft.

Mall's Fuel Inc.

Closed Civ. 2701

Deft.

MALKIN, Roger D.

Misc.Civ. 81-147

DEFT

CIVIL 80-1041C

MALLARD, Doris aka Doris Byron aka  
Dorothy Byron

Douglas Womble, et. al.

DEFT

CIVIL 80-1041C

MALLARD, John

Douglas Womble, et. al.

Deft.

MALLARD, John R.

Misc.Civ-77-43



Pldf.

Closed

Mallery, Frank L.

Civ. 3373

Plff.

Closed

Mallery, Margaret C.

Civ. 3373

Pltf.

MALLEY-DUFF & ASSOCIATES, INC.

MiscCiv-79-68

Plff.

Closed

Malley, John J, Jr.

Civ. 4416

Pltf.

MALLEY, William J.

Closed Civ-1969-454

Deft.

MALLEY, William J.

Closed Civ-1966-249

Pltf.

MALLORY, Donald

Closed Civ-1970-293

Plff.

Closed

Malloy, Edward

Civ. 324



PITF.

MALLY, Mary E.

Closed Civ-76-490

Plff.

Closed

Malmros, August

Civ. 372

1  
Pltf.

MALMROSE, Gary R.

Closed Civ-74-76

Pltf.  
MALOF, A. Paul

Closed Civ-1972-537

Deft.

Closed

Malone, Alton

Civ. 7957

Closed

Deft.

Malone, Bessie

Div. 1325

Deft.

MALONE, Brian

Closed Civ-74-483

Deft.

Malone

Malone, Dolores

Civ. 7957



Plff.

~~by~~ Closed

Malone, Emak

Civ. 3601

Deft.

MALONE, Frank

Closed Civ-75-78

Pltf.

MALONE, Frank

Closed Civ-1967-410

Closed Civ-1969-173

Pltf.  
MALONE, Frank K.

Civ-1966-115<sup>Closed</sup>

Deft.

MALONE, Kenneth

Closed Civ-1973-269

Pltf.

MALONE, Patricia A.

Closed Civ-79-219

Deft.

MALONE, Sam

Pages Civ-76-330

Deft.

MALONE, Samuel P.

Case Civ-1966-165



Pltf.

MALONE, Sister Joan F., O.S.F.

Closed

Civ-81-23F

Karl H. Hand, etc., et al.

Deft.

MALONE, Deputy Steve

-- ~~1977~~: Civ-77-234

Pltf.

Malone, Wilbert M.

Class. Civ. 78-488

Closed

Deft.

Malone, William A.

Civ. 3788

Deft.

Closed

Maloney, Clarence M.

Civ. 8071

Deft.

MALONEY, Edward F., S.J. as Closed Civ-75-317  
Vice-Pres. of Academic Affairs  
& as Acting Pres. of Canisius  
College

Deft.

MALONEY, Sgt. F.R.

Case Civ-76-112 C

DEFT

CIVIL 80-1043C

MALONEY, Florence

Gerald Nappa



Plff.

Closed<sup>1</sup>

Maloney, John

Civ. 10236

Flff.

Maloney, Joseph T.

~~Class~~

Civ. 6794

Pltf.

MALONEY, Robert E.

Cloned Civ-1972-640

Plff.

Closed

Maloney, Rose

Div. 962

Deft.

MALONEY, Sergeant

Civ-77-187

Deft.

MALONEY, Timothy

Clerk Civ-78-107

Deft.  
MALONEY, Timothy J.

Civ-81-948C

Pltf. United States of America

Closed

Deft.

Maloney, Williams J.

Civ. 1854

Civ. 1868



Deft.

MALONEY, William R.

Closed Civ-77-595

Plff.

Closed

Makosky, Narcissa L.

Civ. 3373

Closed

Beft.

Malouf, Jubert

Civ. 3421

Deft.

Closed

Malouf, Jubert G.

Civ. 3537

Deft.  
MALOY, Charles

Civ-77-135

Deft.  
MALOY, Charles

Closed Civ-79-494

Deft.

MALLOY, William J., Jr.

Closed Civ-77-135

Closed Civ-79-494

Deft.

MALSEGNA, Anthony

Civ-79-62

Civ-79-63

Civ 79-66

Civ 79-67

Civ 79-68

Civ 79-69

Civ 79-70



Closed

Deft.

Arrow Degerminated Malt Adjunct, 200 bags  
Civ. 1912

pltf.

MALTA, Kenneth J.

~~Closed~~ Civ 78-698

Plff.

016592t

Maltby, James H.

Civ. 6896

Pltf.

MALTESE, Maria V.

Closed Civ-1973-130

Closed Civ-1973-131

Closed Civ-1973-132

Closed Civ-1973-133

Closed Civ-1973-134

Closed Civ-1973-135

Closed Civ-1973-136

Closed Civ-1973-137

Closed Civ-1973-138

Misc. Civ. 75-23

Closed Civ-77-49

Deft  
MALVASO, James et al

Civ-82-194B(C)

Pltf Norman J. Wingerden

Plff.

Closed

Malvin, Daniel P.

Civ. 6265

DEFT

CIVIL 80-982C

MAMCO CORP.

Frank & Joseph Larotonda

Plff.

Closed.

Mameli, Filippo

Civ. 1015



Deft.

M & M Market

Closed

Civ. 3101

Deft.

Closed

Mamiye B ros.

Civ. 10,057

Closed

Deft.

Maniya, Celia

Civ. 10,057

Deft.

Closed

Mamiye, Ezra

Cit. 10,057

Deft.

Closed

Mamiye, Jack

Civ. 10,057

Deft.

Closed

Mamiye, Michael

Civ. 10,057

Deft.

closed

Mamiye, Nathan

Civ. 10,057

Pltf.  
MAMMOSER, Donald  
d/b/a Don's Auto

Civ-79-635



Plff.

Closed

Mamrod, Clara

Civ. 6236

Deft.  
MAMULA, B.

Closed Civ-1970-428

Deft.

MAMULA, Nicholas

Closed Civ-1972-290

Deft.

MANARINA OLDSMOBILE, INC.

Misc.Civ.78-56

Deft.

MANASEN, Benjamin

Closed Civ-1967-182

Closed Civ-1967-190

Plff.

Closed

Manca, Salvatore

Civ. 3459

Pltf.

MANCARI, Dennis

Close Civ-76-165

Pltf.

MANCARI, Paula

Closed Civ-76-165



Deft.  
MANCH, Joseph

~~Closed~~  
Civ. 11,546  
Closed Civ-1970-9  
Closed Civ-1971-117  
Closed Civ-1971-408  
Civ-1972-325  
Closed Civ-74-558  
~~Closed~~ Civ-78-245

Pltf.

MANCHESTER, Frank

Civ-79-913

Pltf.  
MANCHESTER, Shirley C.  
his wife

Civ-79-913

Deft.

MANCIK, Thomas J.

Civ-81502B(C)

Pltf: U.S.A.

Pltf.  
MANCINI, Anthony P.

Closed

Civ. 11,788

Closed Civ-1967-174

Closed Civ-1967-268

Closed Civ-1967-382

Civ-1968-130

Closed

Closed Civ-1968-172

Pltf.  
MANCINI, Edward L.

Closed Civ-1971-289

Pltf.

MANCINI, Helen

~~Closed~~ Civ-77-547  
~~Closed~~ Civ-78-157

Pltf.

MANCINI, Michael

Civ-77-493



Pltf.

MANCINI, Michael A.

Closed

Civ-77-384 E

Pltf.

MANCINI, Noreen

Close Civ-76-502

Pltf.  
MANCINI, Philip

Closed Civ-76-502

Deft.

(42)

MANCUSI, Vincent R.  
Supt., Attica, etc.

Brown	closed	Civ-1972-556
Catanzaro	closed	Civ-1972-583
Skinner	closed	Civ-1972-633
Frazier	closed	Civ-1973-126
Barnes		Civ-1973-442
	closed	Civ-74-21
	closed	Civ-74-174C
		Civ-75-132

Deft.

MANCUSI, Vincent R.  
Supt., Attica, etc.

(41)

	Closed	Civ-1972-167
	Closed	Civ-1972-170
Sadowy	Closed	Civ-1972-173
Ortiz	Closed	Civ-1972-178
Johns	Closed	Civ-1972-179
Bauer	Closed	Civ-1972-184
Walker	Closed	Civ-1972-198
Bryant	Closed	Civ-1972-214
Skinner	Closed	Civ-1972-342
Eaton	Closed	Civ-1972-450
Session	Closed	Civ-1972-505
Milburn	Closed	Civ-1972-532
Cannon	Closed	Civ-1972-534

Deft.

(40)

MANCUSI, Vincent R.  
Supt., Attica, etc.

Closed Civ-1972-43

Closed Civ-1972-46

Closed Civ-1972-48

Closed Civ-1972-54

Robinson Civ-1972-58

Swanson Closed Civ-1972-70

Mapp Closed Civ-1972-84

Closed Civ-1972-88

Cianciosi Closed Civ-1972-89

Closed Civ-1972-103

Gaynor Closed Civ-1972-104

Darling Closed Civ-1972-124

Closed Civ-1972-144

Burton Closed Civ-1972-148

Dalton Closed Civ-1972-165

(39)

Deft.

MANCUSI, Vincent R.

Sup't., Attica, etc.

Butler	Closed	Civ-1971-584
Wood	Closed	Civ-1971-586
Clark	Closed	Civ-1972-3
Stevenson	Closed	Civ-1972-1
	Closed	Civ-1972-5
Washington	Closed	Civ-1972-6
Catanzaro		Civ-1972-9
Thomas	Closed	Civ-1972-10
Martin	Closed	Civ-1972-17
Bilello	Closed	Civ-1972-24
Stroble	Closed	Civ-1972-28
Ross	Closed	Civ-1972-35
Pelow	Closed	Civ-1972-37
LeMon	Closed	Civ-1972-38

Deft.

MANCUSI, Vincent R.  
Warden, Attica Prison

(38)

Closed Civ-1971-473

Civ-1971-484

Closed Civ-1971-485

Closed Civ-1971-492

Closed Civ-1971-501

Closed Civ-1971-496

Closed Civ-1971-522

Nieves Closed Civ-1971-526

Presley ~~Closed~~ Civ-1971-486

Little ~~Closed~~ Civ-1971-536

Irons Closed Civ-1971-564

Wade Closed Civ-1971-565

Moore Closed Civ-1971-569

Bloeth Closed Civ-1971-583



Deft.

(37)

MANCUSI, Vincent R.

Closed Civ-1971-391

Warden, Attica Prison

Closed Civ-1971-410

Florence Closed Civ-1971-420

Alexander Closed Civ-1971-427

Pointer Closed Civ-1971-428

Candelaria Closed Civ-1971-431

Sturgis Closed Civ-1971-433

Brown Closed Civ-1971-436

Wooten Closed Civ-1971-446

Mancuso Closed Civ-1971-447

Rivers Closed Civ-1971-456

Bates ~~Closed~~ Civ-1971-460

Ouderkirk Closed Civ-1971-461

Smith Closed Civ-1971-464

Saldana Closed Civ-1971-466

(36)

Deft.

MANCUSI, Vincent R.  
Warden, Attica Prison

Cocco Closed Civ-1971-310  
Barbara Closed Civ-1971-330  
Gaines Closed Civ-1971-331  
Ryder Closed Civ-1971-333  
Sowards Closed Civ-1971-334  
Walston Closed Civ-1971-335  
Walston Closed Civ-1971-336  
Buster Closed Civ-1971-341  
McKay Closed Civ-1971-347  
Jackson Closed Civ-1971-346  
Fatta Closed Civ-1971-350  
Chiles Closed Civ-1971-351  
Pointer Closed Civ-1971-354  
Closed Civ-1971-388  
Closed Civ-1971-365  
Closed Civ-1971-364

Ryder  
Deveaux  
Wright

Deft.

(35)

MANCUSI, Vincent R.  
Warden, Attica Prison

Closed Civ-1971-261  
~~Closed~~ Civ-1971-264

Scaglia ~~Closed~~ Civ-1971-266  
Closed Civ-1971-269

Kennedy Closed Civ-1971-278

Elie Closed Civ-1971-283

Askew Closed Civ-1971-285

Baran Closed Civ-1971-288

Eldridge ~~Closed~~ Civ-1971-282

Foster Closed Civ-1971-284

Thibadoux Closed Civ-1971-286

Vaughn Closed Civ-1971-298

Gaynor Closed Civ-1971-299

Walker Closed Civ-1971-301

Deft.

(34)

MANCUSI, Vincent R.  
Warden, Attica Prison

Closed Civ-1971-176

Closed Civ-1971-179

Barbarito Closed Civ-1971-180

Reese Closed Civ-1971-181

Vaughn closed Civ-1971-184

Blackwell Closed Civ-1971-191

Lewis closed Civ-1971-192

Cataliotti closed Civ-1971-193

Thibadoux Closed Civ-1971-211

Thibadoux Closed Civ-1971-216

Collier Closed Civ-1971-235

Moore closed Civ-1971-251

Fumerelle Closed Civ-1971-256

Grant Closed Civ-1971-257

Noor Closed Civ-1971-260

Deft.

(33)

MANCUSI, Vincent R.  
Warden, Attica Prison

Robinson Civ-1970-593

Closed Civ-1971-142

Closed Civ-1971-145

Closed Civ-1971-146

Ford Closed Civ-1971-147

Scarberry ~~612388~~ Civ-1971-148

Miller Closed Civ-1971-158

Cadogan Closed Civ-1971-168

Candelaria Closed Civ-1971-170

Horton Closed Civ-1971-171

~~Closed~~ Thibadoux Civ-1971-173

Marshall Closed Civ-1971-174

● Pelow Closed Civ-1971-212

Deft.

(32)

MANCUSI, Vincent R.

Closed Civ-1971-58

Warden, Attica Prison

Closed Civ-1971-59

Walston Closed Civ-1971-69

Lake Closed Civ-1971-75

Thibadoux Closed Civ-1971-84

Tillery Closed Civ-1971-94

Giles Closed Civ-1971-96

Bates Closed Civ-1971-98

~~Closed~~ Civ-1971-101

Schmelzer Closed Civ-1971-114

Martinez Closed Civ-1971-115

Glover ~~Closed~~ Civ-1971-124

Johnson ~~Closed~~ Civ-1971-131

Burnham Closed Civ-1971-132

Dover Closed Civ-1971-129

Deft.

MANCUSI, Vincent R.

(31)

Closed Civ-1970-603

Yarrell Closed Civ-1970-606

Yarrell Closed Civ-1970-607

Walston Closed Civ-1970-608

Stevenson Closed Civ-1970-610

O'Connor Closed Civ-1970-611

Ambrosoli Closed Civ-1970-613

Thibadoux Closed Civ-1971-1

Cataliotti Closed Civ-1971-19

Glover Closed Civ-1971-26

Washington Closed Civ-1971-39

Rosenberg Closed Civ-1971-50

Deft.

(30)

MANCUSI, Vincent R.

	Closed	Civ-1970-568
Daloia	Closed	Civ-1970-570
Walker	Closed	Civ-1970-571
Washington	Closed	Civ-1970-574
Harper	Closed	Civ-1970-575
Dover	Closed	Civ-1970-576
Combs	Closed	Civ-1970-577
Bennett	Closed	Civ-1970-578
Jones	Closed	Civ-1970-579
Harrison	Closed	Civ-1970-589
Chiles	Closed	Civ-1970-592
Rovinson	Closed	Civ-1970-593
Nieves	Closed	Civ-1970-601



Deft.

MANCUSI, Vincent R.

Closed Civ-1970-501

Daloi Closed Civ-1970-504

Harris Closed Civ-1970-507

Farr Closed Civ-1970-522

Cannon Closed Civ-1970-535

Wilson Closed Civ-1970-536

Carter Closed Civ-1970-539

Harrel Closed Civ-1970-540

Pugach Closed Civ-1970-541

Broome Closed Civ-1970-548

Rucken Closed Civ-1970-550

Jones Closed Civ-1970-559

(28)

Deft.

MANCUSI, Vincent R.

Watson	Closed	Civ-1970-456
McCoy	Closed	Civ-1970-457
Kinney	Closed	Civ-1970-458
Nelson	Closed	Civ-1970-466
Lawrence	Closed	Civ-1970-478
Bruce	Closed	Civ-1970-479
Brown	Closed	Civ-1970-481
Harven	Closed	Civ-1970-483
Jones	Closed	Civ-1970-487
Bisordi	Closed	Civ-1970-489
Merkel	Closed	Civ-1970-490
Wallace	Closed	Civ-1970-490
Watson	Closed	Civ-1970-490
	Closed	Civ-1970-491

(27)

Deft.

MANCUSI, Vincent R.

Brown	Closed	Civ-1970-379
Doud	Closed	Civ-1970-402
Bieth	Closed	Civ-1970-404
Keyes	Closed	Civ-1970-405
Perdone	Closed	Civ-1970-409
Martinez	Closed	Civ-1970-413
Graves	Closed	Civ-1970-414
Sanders	Closed	Civ-1970-415
Bullock	Closed	Civ-1970-416
Wadsworth	Closed	Civ-1970-429
Gordon	Closed	Civ-1970-448
Howland	Closed	Civ-1970-449
Pugach	Closed	Civ-1970-454
Johnson	Closed	Civ-1970-455

Deft.

MANCUSI, Vincent R.

(26)

	Coyne	Closed	Civ-1970-314
	Loce	Closed	Civ-1970-315
	Trimmer	Closed	Civ-1970-318
	Bodiford	Closed	Civ-1970-319
	Washington	Closed	Civ-1970-321
	Lewis	Closed	Civ-1970-322
	Rodriguez	Closed	Civ-1970-323
	Thibadoux	Closed	Civ-1970-330
	Hoff	Closed	Civ-1970-342
	Thibadoux	Closed	Civ-1970-343
	Vaughn	Closed	Civ-1970-344
	Smoake	Closed	Civ-1970-354
	Jones	Closed	Civ-1970-355
	Wade	Closed	Civ-1970-364
Closed	Thompson		Civ-1970-365
Closed	Hubbard		Civ-1970-366
Closed	Slater	Closed	Civ-1970-378

Deft.

MANCUSI, Vincent R.

(25)

Thibadoux	Closed	Civ-1970-192
Fumelle	Closed	Civ-1970-202
Carter	Closed	Civ-1970-203
Weis	Closed	Civ-1970-222
Bonaparte	Closed	Civ-1970-224
Crawford	Closed	Civ-1970-230
Withey	Closed	Civ-1970-239
Thibadoux	Closed	Civ-1970-240
DeBerry	Closed	Civ-1970-246
Marchison	Closed	Civ-1970-251
Taylor	Closed	Civ-1970-257
Holcombe	Closed	Civ-1970-264
Cronan	Closed	Civ-1970-272
Gibson	Closed	Civ-1970-279
Simari	Closed	Civ-1970-281
James	Closed	Civ-1970-290

Deft.

(24)

MANCUSI, Vincent R.

Rucker	Closed	Civ-1970-66
Blyden	Closed	Civ-1970-75
DuBois	Closed	Civ-1970-86
Maselli	Closed	Civ-1970-92
Romanac	Closed	Civ-1970-95
Minor	Closed	Civ-1970-128
White	Closed	Civ-1970-153
Blake	Closed	Civ-1970-180
Kyle	Closed	Civ-1970-181
Bosco	Closed	Civ-1970-182
Livingston	Closed	Civ-1970-183
Dallas	Closed	Civ-1970-184
Armstrong	Closed	Civ-1970-185
"	Closed	Civ-1970-186
Omer	Closed	Civ-1970-187
Williams	Closed	Civ-1970-188

Deft.

MANCUSI, Vincent R.

(23)

Davis Closed Civ-1970-21  
Majewski Closed Civ-1970-22  
Dicker Closed Civ-1970-23  
Vaughn Closed Civ-1970-38  
Washington Closed Civ-1970-45  
Boddie Closed Civ-1970-46  
Johnson Closed Civ-1970-47  
Hoff Closed Civ-1970-52  
Kurz Civ-1970-54  
Gilbert Closed Civ-1970-57  
Bennett Closed Civ-1970-58  
Watson Closed Civ-1970-59  
Thibadoux Closed Civ-1970-60  
Romanac Civ-1970-61  
Burke Civ-1970-62  
Cunningham Closed Civ-1970-65

Dept.

MANCUSI, Vincent R.

(22)

Politanano <sup>Closed</sup> Civ-1969-469

Demming <sup>Closed</sup> Civ-1969-470

Highway <sup>Closed</sup> Civ-1969-471

Deslongchamp <sup>Closed</sup> Civ-1969-472

Solie <sup>Closed</sup> Civ-1969-473

James <sup>Closed</sup> Civ-1969-474

Lucas <sup>Closed</sup> Civ-1969-476

Hoff <sup>Closed</sup> Civ-1969-478

Isom <sup>Closed</sup> Civ-1969-487

Snyder <sup>Closed</sup> Civ-1970-1

Rodriguez <sup>Closed</sup> Civ-1970-2

Fields <sup>Closed</sup> Civ-1970-8

Sweet <sup>Closed</sup> Civ-1970-12

Swiatek <sup>Closed</sup> Civ-1970-13

Crispin <sup>Closed</sup> Civ-1970-15

Bardo <sup>Closed</sup> Civ-1970-19

Ambrosio <sup>Closed</sup> Civ-1970-20



Dert.

MANCUSI, Vincent R.

(21)

- Fogler <sup>Closed</sup> Civ-1969-409
- Hudson <sup>Closed</sup> Civ-1969-410
- O'Dell <sup>Closed</sup> Civ-1969-417
- Livecchi <sup>Closed</sup> Civ-1969-420
- Simari <sup>Closed</sup> Civ-1969-421
- Martinez <sup>Closed</sup> Civ-1969-426
- Kovner <sup>Closed</sup> Civ-1969-433
- Cherter <sup>Closed</sup> Civ-1969-434
- Jackson <sup>Closed</sup> Civ-1969-435
- Guyotta <sup>Closed</sup> Civ-1969-442
- Fumarello <sup>Closed</sup> Civ-1969-443
- Taylor <sup>Closed</sup> Civ-1969-446
- Morganti <sup>Closed</sup> Civ-1969-456
- Thomas <sup>Closed</sup> Civ-1969-464
- Maisonnade <sup>Closed</sup> Civ-1969-465
- Black <sup>Closed</sup> Civ-1969-466
- Knapp <sup>Closed</sup> Civ-1969-467
- Cronin <sup>Closed</sup> Civ-1969-468

Deft.

MANCUSI, Vincent R.

(20)

Arthur Closed Civ-1969-336  
Walls Closed Civ-1969-337  
Furtak Closed Civ-1969-340  
Howland Closed Civ-1969-342  
Dennis Closed Civ-1969-351  
Brumfield Closed Civ-1969-354  
Cole Closed Civ-1969-355  
Cholmondeley Closed Civ-1969-357  
Lee Closed Civ-1969-358  
Carter Closed Civ-1969-372  
Carter Closed Civ-1969-373  
Holcombe Closed Civ-1969-382  
Oswald Closed Civ-1969-389  
Scarberry Closed Civ-1969-400  
Watson Closed Civ-1969-401  
Wright Closed Civ-1969-404  
Coleman Closed Civ-1969-407

Deft.  
MANCUSI, Vincent R.

- Stevenson Closed Civ-1969-239
- Stevenson Closed Civ-1969-240
- Stevenson Closed Civ-1969-241
- Stevenson Closed Civ-1969-242
- Newton Closed Civ-1969-245
- Quagliana Closed Civ-1969-250
- Holcombe Closed Civ-1969-279
- Cole Closed Civ-1969-280
- Horton Closed Civ-1969-282
- Blake Closed Civ-1969-289
- Mault Closed Civ-1969-293
- Mieczko Closed Civ-1969-295
- Bardo Closed Civ-1969-297
- Funn Closed Civ-1969-303
- Davis Closed Civ-1969-306
- Pugach Closed Civ-1969-311
- Dycha closed Civ-1969-310

Deft.

(18)

MANCUSI, Vincent R.

Bennett Closed Civ-1969-171

White Closed Civ-1969-172

Beasley Closed Civ-1969-185

Walker Closed Civ-1969-190

Johnson Closed Civ-1969-193

Torres & Rivera Closed Civ-1969-196

Waller Closed Civ-1969-211

Newell Closed Civ-1969-212

Thibadoux Closed Civ-1969-218

Vaughn Closed Civ-1969-219

Stroble Closed Civ-1969-220

D'Auria Civ-1969-221

Hernandez Closed Civ-1969-222

Plunkett Closed Civ-1969-232

Plunkett Closed Civ-1969-233

Pearson Closed Civ-1969-235

Moore Closed Civ-1969-236

Deft.

MANCUSI, Vincent R.

(17)

Pugach Closed Civ-1969-119  
Pugach Closed Civ-1969-120  
Jefferies Civ-1969-135  
Stubbs Closed Civ-1969-136  
Cole Closed Civ-1969-137  
Goodman Civ-1969-138  
Phillips Closed Civ-1969-141  
Izzard Closed Civ-1969-142  
Fogler Closed Civ-1969-143  
Fogler Closed Civ-1969-145  
Ketwig Closed Civ-1969-146  
Andrews Civ-1969-150  
Coleman Civ-1969-151  
Milburn Closed Civ-1969-156  
Ramos Civ-1969-157  
Gaskin Civ-1969-159  
Gaskin Closed Civ-1969-166

Deft.

MANCUSI, Vincent R.

(16)

Irons Closed Civ-1969-18  
Pellicone Closed Civ-1969-30  
White Closed Civ-1969-33  
Blyden Closed Civ-1969-38  
Wright Closed Civ-1969-39  
Ely Closed Civ-1969-49  
Mancuso Closed Civ-1969-63  
Jackson Closed Civ-1969-76  
Tortorice Civ-1969-77  
Rutledge Closed Civ-1969-78  
Farr Closed Civ-1969-90  
Joseph Closed Civ-1969-91  
Plunkett Closed Civ-1969-101  
Hithy Closed Civ-1969-102  
Holcombe Civ-1969-108  
Blyden Closed Civ-1969-113

Deft.  
 MANCUSI, Vincent R.

Tribote	Closed	Civ-1968-355
Panebianco	Closed	Civ-1968-356
McGaughy	Closed	Civ-1968-368
Brooks		Civ-1968-369
Furtak		Civ-1968-395
Richmond		Civ-1968-396
Brown	Closed	Civ-1968-397
Tribote	Closed	Civ-1968-404
Pellicone	Closed	Civ-1968-405
Toliver		Civ-1968-406
Thibadoux		Civ-1969-5
Milton		Civ-1969-9
Boddie		Civ-1969-10
Fields		Civ-1969-11
Baker		Civ-1969-15
Lewis	Closed	Civ-1969-16
Burke		Civ-1969-17

Deft.  
MANCUSI, Vincent R.

(14)

Gilbert <sup>Cl</sup> Civ-1968-248  
Shuford <sup>Cl</sup> Civ-1968-249  
Perdone <sup>Cl</sup> Civ-1968-274  
Griffin <sup>Cl</sup> Civ-1968-275  
Moore <sup>Closed</sup> Civ-1968-276  
Sweeney <sup>Cl</sup> Civ-1968-286  
Williams <sup>Cl</sup> Civ-1968-287  
Balkum <sup>Cl</sup> Civ-1968-288  
Washington <sup>Cl</sup> Civ-1968-293  
Brennan <sup>Closed</sup> Civ-1968-317  
Rodriguez <sup>Cl</sup> Civ-1968-318  
Marshall <sup>Closed</sup> Civ-1968-320  
Ward <sup>Cl</sup> Civ-1968-321  
Wolton <sup>Closed</sup> Civ-1968-322  
Tomkins <sup>Cl</sup> Civ-1968-331  
Pinckney <sup>Cl</sup> Civ-1968-352



Deft.

MANCUSI, Vincent R.

(13)

Flores Closed Civ-1968-186  
Perry Closed Civ-1968-194  
Mancuso Closed Civ-1968-198  
Pugach Closed Civ-1968-199  
Williams Civ-1968-207  
Torres Closed Civ-1968-208  
Stanley Closed Civ-1968-211  
Furtak Civ-1968-215  
Finn Civ-1968-218  
Deas Civ-1968-219  
Schmeizen Closed Civ-1968-220  
Herrington Closed Civ-1968-221  
Torres Closed Civ-1968-222  
Hibbitt Closed Civ-1968-230  
World Closed Civ-1968-231  
Peterson Closed Civ-1968-238  
Bardo Closed Civ-1968-247

Deft.

MANCUSI, Vincent R.

closed (12)

Walls<sup>closed</sup> Civ-1968-131  
Taylor<sup>closed</sup> Civ-1968-132  
Hale<sup>closed</sup> Civ-1968-145  
Glover<sup>closed</sup> Civ-1968-149  
Burke<sup>closed</sup> Civ-1968-150  
Williams<sup>closed</sup> Civ-1968-158  
Williams<sup>closed</sup> Civ-1968-160  
Espy<sup>closed</sup> Civ-1968-161  
Harrington<sup>closed</sup> Civ-1968-162  
Pasciolla<sup>closed</sup> Civ-1968-163  
Beasley<sup>closed</sup> Civ-1968-166  
Haney<sup>closed</sup> Civ-1968-168  
Hale<sup>closed</sup> Civ-1968-169  
Davis<sup>closed</sup> Civ-1968-170  
Marshall<sup>closed</sup> Civ-1968-181  
Mason<sup>closed</sup> Civ-1968-182

Deft.  
MANCUSI, Vincent R.

(11)

Rosenberg	Civ-1967-384
Caster	Civ-1967-385
Lambert	Civ-1967-406
Malone	Civ-1967-410
Vazquez	Civ-1967-411
Williams	Civ-1967-438
Williams	Civ-1967-439
Loce	Civ-1967-445
Bass	Civ-1968-7
Solomon	Civ-1968-10
Jackson	Civ-1968-51
Rule	Civ-1968-53
Kirk	Civ-1968-81
Beasley	Civ-1968-91
Bariloff	Civ-1968-98
Scott	Civ-1968-113
Chennault	Civ-1968-125

Deft.  
MANCUSI, Vincent R.

(10)

Catanzaro Closed Civ-1967-295  
Elliott Closed Civ-1967-296  
Bianchi Closed Civ-1967-305  
Majewski Closed Civ-1967-306  
Evans Closed Civ-1967-345  
Gloe Closed Civ-1967-328  
Newton Closed Civ-1967-349  
Fluellyn Closed Civ-1967-350  
Phillips Closed Civ-1967-355  
McDuffie Closed Civ-1967-356  
Bianchi Civ-1967-358  
Clemons Closed Civ-1967-359  
Bwynne Closed Civ-1967-370  
Thibadeaux Closed Civ-1967-371  
Brown Closed Civ-1967-372  
Agoglia Closed Civ-1967-381

Deft.  
MANCUSI, Vincent R.

(9)

Zielinski Closed Civ-1967-233  
Dennis Closed Civ-1967-234  
Darling Closed Civ-1967-235  
Donahue Closed Civ-1967-239  
Herrington Closed Civ-1967-238  
Glover Closed Civ-1967-240  
Evans Closed Civ-1967-263  
Scott Closed Civ-1967-265  
Luster Closed Civ-1967-276  
Nadile Closed Civ-1967-278  
Coleman Closed Civ-1967-288  
Anderson Closed Civ-1967-289  
Mercuri Closed Civ-1967-290  
● Davis Closed Civ-1967-291  
Parker Closed Civ-1967-292  
Sparks Closed Civ-1967-293

Deft.  
MANCUSI, Vincent R.

(8)

Darling Closed Civ-1967-135  
Nailor Closed Civ-1967-136  
Webster Closed Civ-1967-137  
Curtis Closed Civ-1967-142  
Harris Closed Civ-1967-146  
Walker Closed Civ-1967-148  
Prince Closed Civ-1967-166  
Davis Closed Civ-1967-172  
Savini Closed Civ-1967-187  
Dennis Closed Civ-1967-197  
Farr Closed Civ-1967-211  
Orr Closed Civ-1967-217  
Fields Closed Civ-1967-219  
Molley Closed Civ-1967-220  
Bryant Closed Civ-1967-222  
Bilbo Closed Civ-1967-225  
Hurst Closed Civ-1967-228

Deft.

(7)

MANCUSI, Vincent R.

DeFlumer <sup>Closed</sup> Civ-1967-15  
Sharkey <sup>Closed</sup> Civ-1967-20  
Jackson <sup>Closed</sup> Civ-1967-41  
Hocking <sup>Closed</sup> Civ-1967-58  
Alston <sup>Closed</sup> Civ-1967-67  
Cowan <sup>Closed</sup> Civ-1967-70  
Pellicone Civ-1967-84  
Edwards <sup>Closed</sup> Civ-1967-86  
Albini <sup>Closed</sup> Civ-1967-95  
Lee Civ-1967-97  
Smith <sup>Closed</sup> Civ-1967-100  
Stevenson <sup>Closed</sup> Civ-1967-110  
Hoage <sup>Closed</sup> Civ-1967-132  
Slater <sup>Closed</sup> Civ-1967-133  
Cole <sup>Closed</sup> Civ-1967-134

Deft.

MANCUSI, Vincent R.	Closed	Bailey	Civ-1966-172
	Closed	Blasetti	Civ-1966-190
		Rosas	Civ-1966-194
	Closed	Fields	Civ-1966-225
	Closed	Cole	Civ-1966-228
	Closed	Benjamin "	1966-229
		Clemons	Civ-1966-230
	Closed	Kulis	Civ-1966-243
	Closed	Ward	Civ-1966-248
		Shaw	Civ-1966-251
		Richey	Civ-1966-252
		Searfoss	Civ-1967-6
		Catanzaro	Civ-1967-9
		Hale	Closed Civ-1967-10
		Duff	Closed Civ-1967-11



Deft.		(5)
MANCUSI, Vincent R.	Closed Hawkins	Civ-1966-96
	Closed Furtak	Civ-1966-113
	Closed Stone	Civ-1966-114
	Closed Malone	Civ-1966-115
	Closed Kincaid	Civ-1966-126
	Giaccaglia	Civ-1966-127
	Woods	Civ-1966-129
	Logan	Civ-1966-130
	Closed DeSantis	Civ-1966-136
	Closed Benjamin	Civ-1966-139
	Closed Deslongchamp	Civ-1966-143
	Closed Sgroi	Civ-1966-153
	Simms	Civ-1966-154
	Closed Gibbs	Civ-1966-164

Deft.

MANCUSI, Vincent R.

(4)

Paulding Closed Civ-1966-3  
Williams Closed Civ-1966-6  
Topping Closed Civ-1966-15  
World Closed Civ-1966-17  
Morton Closed Civ-1966-18  
Clemons Closed Civ-1966-22  
Estrada Closed Civ-1966-24  
Sepos Closed Civ-1966-30  
Walls Closed Civ-1966-39  
Clemons Closed Civ-1966-41  
Caster Closed Civ-1966-42  
Price Closed Civ-1966-61  
Joyner Closed Civ-1966-72  
Love Closed Civ-1966-92  
Gillespie Closed Civ-1966-93  
Church Closed Civ-1966-94  
Clemons Closed Civ-1966-95

Deft.  
MANCUSI, Vincent R.

(3)

Boyer	Closed	Civ.	11,768
DeForte	Closed		11,812
Furtak	Closed		11,813
Headley	Closed		11,824
Bennett	Closed		11,829
Satz			11,839
Peck	Closed		11,843
Fields	Closed		11,844
Ward	Closed		11,872
Jameison	Closed		11,876
Tyson	Closed		11,878
Funn	Closed		11,879
Tyson	Closed		11,880
Kenyon	Closed		11,881
Swansbrough	Closed		11,889

Deft.

MANCUSI, Vincent R.

(2)

DeBerry	Cross Civ.	11,704
Rucker	Closed	11,706
Freeman	Closed	11,707
Whitfield	Closed	11,717
Senatore	Closed	11,718
Gillespie	Closed	11,721
Marcucci	Closed	11,740
Soto		11,753
Moore	Closed	11,755
Bell	Closed	11,761
Ross	Closed	11,762
Kelly	Closed	11,763
Lindsay	Closed	11,764
Dicker	Closed	11,765
Fields	Closed	11,766
LaBelle	Closed	11,767

Deft.

MANCUSI, Vincent R.  
Warden, Attica  
State Prison

Stevenson (Civ)	11,618
Mieczko	11,620
Pfeffer closed	11,624
Kirk closed	11,626
Ward closed	11,630
Robinson closed	11,632
Lombardi closed	11,645
Brabson closed	11,667
Lee closed	11,674
Williams	11,677
Diaz closed	11,678
Senatore closed	11,681
Bogan closed	11,695

Pltf.  
MANCUSO, Alfred

Closed  
Civ-1968-198

Pltf.  
MANCUSO, Alfred R.

Closed

Civ. 10,897

Closed 11,338

Closed 11,347

Closed Civ-1971-447

Closed Civ-1972-51

Pltf.

MANCUSO, Alfred Richard

Closed

Civ. 11,290

Closed Civ-1969-63



Plff.

Closed

Charles Mancuso & Son, Inc.

Civ. 7537

pltf

MANCUSO, Deborah Peters  
See BK # 78-1349

Closed Civ 79-348

Deft.

Closed

Mancuso, Gerald J.

Civ. 6367

Deft.

Closed

Mancuso, Helen

Civ. 6367

Deft.  
MANCUSO, John

CIV-80-360

JTE

NAACP, et al

~~019804~~

Deft.

Mancuso, Robert J.

Civ. 9584

Closed

Dept.

MANCUSO, RUSSELL

Civ. 498

Plff.

Clasif

Mandarino, Michael P.

Civ. 5603



Pitt.

MANDEL, Seymour M.  
as Trustee in Bankruptcy  
of Roger W. Wilber,  
Bankrupt

Closed Civ-1968-225

Pltf.

MANDELKERN, Bernard

CLOBUC

Civ. 10,579

Plff.  
MANDELKERN, Bernard N.

closed  
Civ. 10,579

Deft.

---

Mandell, Hyman

Civ. 9916

Plff.

Closed

Mandoki, Charles

Civ. 6831

Deft.

MANDY, J.

Closed Civ-76-298

Deft.

MANEIRO, William

~~Closed~~ Civ-79-465B

Pltf.

MANFER, Patrick

Misc.Civ.77-46



Deft.

MANFER, Theresa

Misc.Civ.77-46

DEFT

MANGAN, John F., J .,

Civ 79-96

Deft.

Mangel Stores, Inc.

Civ. 7373

Dept.

Closed

Manenty

Civ. 4947

Deft.

Closed

Manenty, Guido

Civ. 4947

Deft.

Closed

Manenty, Harold

Civ. 4947

Dept.

Class

Manenty, Max

Civ. 4947

Deft.

MANG, Raymond

Closed Civ-74-487



Deft.  
MANGAN, John

Closed

Civ-81-842C

Pltf. Ann Walters & 1

Plff.

Manganiello Biagio B.

Civ. 3235

Pltf.

MANGANO, Anthony

Closed Civ-1971-161

Pltf.

MANGENE, James

Closed

Civ-1970-293

Deft.  
MANGER ROCHESTER CORPORATION

Closed  
Civ. 11, 196

Pltf.  
MANGHAM, Fern

Closed  
Civ-81-194E

Cosmo Musoletto & 1

Pltf.

MANGIALINO, Thomas C. Jr.

Closed

Civ-1970-293

Deft.  
MANGIN, Nancy, R.N.

Closed Civ-80-2516

Yash Pal Gupta



Dest.

Closed

Mangine, Anthony

Civ. 4005

Dept.

Closed

Mangine, Antonio A.

Civ. 7197

Pltf,  
MANGIONE, Anthony

Civ. 11,572 ~~Closed~~

Deft.  
MANGIONE, Anthony F.

Closed Civ-80-496 E

United States of America

ptf

MANGIONE , Chuck

losed Civ 79-260

Pltf.  
MANGIONE, Jean

Closed  
Civ. 11,572

Pltf.

MANGIRELLI, Gerry

closed Civ-75-322

Deft.

Closed

Mangone, Edward

Div. 2128



Deft.

Closed

Mangone, Lucia

Civ. 3996

Def.

MANGUM, Robert J.

Closed Civ-1970-521

Pltf.

MANGURIAN, Harry T. Jr. Closed Civ. 11,279

Deft.

MANGUSO, Anthony

Closed Civ-1969-335

Closed Civ-75-24

Deft.

MANHARDT-ALEXANDER, INC.

Misc.Civ.79-59

Deft.

Closed

Manhardt, Arthur F.

Div. 1938

Closed

Deft.

Manhattan Pickle Co., Inc. Civ. 3862

Deft.

MANHATTAN STREET EMPLOYEES ~~closed~~ Civ-1972-252  
INDEPENDENT UNION



Closed

Deft.

Manheim, George

Civ. 9620

Deft.

Closed

Manino, Leo F.

Civ. 5962

Dept.

Civ. 596B

Manino, Marie

Civ. 596B

Deft.  
MANIOCI, Gerald

Civ-77-135

Plff.

17090d

Manion, Albert

Civ. 8235

Plff.

C10980

Manion, Jessie M.

Civ. 8234

Deft.

MANITOWOC-FORSYTHE CORP.

Misc.Civ.78-19

Deft  
MANJEROVIC, Mary & 1

Misc Civ 82-80B(E)

Pltf USA & 1



Deft.

MANKIUSKYJ, Stephen

Closed Civ-1967-277

Plff.

Closed

Mankowski, Regina

Div. 3373

Pfff.

Closed

Mankowski, Rose

Civ. 3373

Deft.

MANLEY, Bennett

Civ-79-36

Deft.

MANLEY, BANNETT, McDONALD & CO.

Civ-76-16

Pltf.

MANLEY, Charles Edward

Closed Civ-1969-79  
Closed Civ-1969-148

Deft. .

MANLEY, Gerald

Close Civ-77-54

Closed

Deft.

Manley, L.

Civ. 3698



Closed

Deft.

Manley, Leslie

Civ. 3698

Deft.

MANLEY, Milton A. Jr.

Civ-76-16  
Civ-79-36

Closed

Plff.

Manley, Thomas

Civ. 8015

Plff.

Clerk

Manley, Wayne

Civ. 545

Plff.

Closed

Mann, Antoinette Theresa

Div. 3373

Plff.

Closed

Mann, Anton

Div. 3554

Dept.

Closed

Mann, Bernice M.

Civ. 8835

Deft.

closed

Mann, Brian

Civ. 10,024



DEFT

Closed CIVIL 80-262

MANN, Carl D.

James A. Luper

DEFT

*Closed* CIVIL 80-262

MANN, Mrs. Carl D.

James Luper

DEFT

CIVIL 82-105C

MANN, Correctional Officer

Richard Kinder

Deft.

MANN, Floyd E.

Misc. Civ - 77-79

Pltf,  
MANN, George

Closed Civ. 11,024

Deft.

MANN, Harry

Civ-76-459

Plff.

Mann, J.T.

Closed

Civ. 3344

Deft  
MANN, James

Civ-81-1059BC

Deft Norman R. Mitchell



DEFT

~~Closed~~CIVIL 80-893C

MANN, John R.

USA

Plff.

Closed

Mann, Jr., Kellogg

Civ. 8943

Plff.

Closed

Mann, Laruth

Civ. 3344

Deft.

"closed"

Mann, Lloyd R.

Civ. 8835

Plff.

Closed

Mann, Mary Jane

Civ. 8943

Closed

Plff.

Mann, Mattie F.

Civ. 3344

Deft.

MANN, Prison Guard

10/10/76

Civ-76-112 C

DEFT

Closed:

CIVIL 81-285C

MANN, Steven A.

USA



Plff.

W. Closed

Mann, Theodore

Civ. 3553

PLTF,

MANNA MUSIC INC.

Closed CIV. 78-750

Pltf.

MANNEY, James M.

Closed Civ-1970-218

Plff.

Manning, Francis W.

Closed

Civ. 3425

Deft.

Class

Manning, Harry

Civ. 5171

Ptff.

MANNING, Richard

closed Civ-1973-305

Plt.f.

MANNING, Robert

Closed

Civ-79-323

Pltf.

MANNING, Vernon

Closed Civ-1971-58



Closed

Deft.

Manno, Charles

Div. 640

Pltf.  
MANNO, Lawrence

Closed Civ-1970-252

Deft.  
MANNO, Lawrence

Closed Civ-1970-42

Deft.

Closed

Manno, Lucy

Civ. 4361

Closed

Dept.

Manno,, Nicholas P.

Div. 640

Closed

Deft.

Manno, Vincenzo

Civ. 4361

Deft.

Civ-81-431B(C)

MANON, Frederico

U.S.A.

Deft.

Civ-81-431B(C)

MANON, Maria Del Carmen

U.S.A.



Deft.

Manor House Associates, LTD.

Civ-81-36E

Mark Penta

Doft.

---

Manpower Corp.

Civ. 9681 Closed

Closed

Deft.

Manquen, Anna K.

Civ. 464,

Plff.

Closed

Mans, Mary Ella

Gl v. 3344

Deft.

Manse Builders

Closed Civ. 2154

Plff.

Closed

Mansell, John H.

Civ. 9854.

4  
Pltf.

MANSFIELD, Arthur H. Jr.

Closed Civ-1972-359

**Deft.**

**MANSFIELD, Arthur H. Jr.**

Closed **Civ-1969-378**

Closed **Civ-1970-35**

Closed **Civ-1970-36**

Closed **Civ-1970-82**

Closed **Civ-1970-401**

Closed **Civ-1969-451**

Closed **Civ-1972-360**



Deft.

MANSFIELD EQUIPMENT CO.

Closed Civ-76-500

Deft.

Closed

Mansfield, Jean

Civ. 9214

Closed

Deft.

Mansfield, Jennie M.

Civ. 9214

Dept.

Closed

Mansfield, Mary M.

Civ. 9600

Plff.

Closed

Mansfield, William

Civ. 8350

Dept.

Closed

Mansfield, William H.

Civ. 9600

Deft.

S/S FRED A. MANSKE

*Closed*

Civ. 11,841

Deft.  
MANSON CONSTRUCTION  
CORPORATION

Closed Civ-1968-373



Plff.

Class

Manson, Freda

Civ. 5215

Deft.

HANSON, Wayne A.

Closed Civ-1972-564

Plff.

Manson, Harry

Class:

Civ. 5215

Deft.

MANSOUR, John

Civ-76-376

DEFT.

civ. 79-162

MANTANLE, REITH

Deft.

MANTELL, J. William

Closed Civ-81-216E

SEE: BK-79-00197 C

William E. Lawson, etc.

Plff.

Closed

Mantione, Angeline

Civ. 3373

"Closed"

Plff.

Mantione, Russell

Civ. 7064



Pltf.

MANUEL, Lucile

Civ-77-533

Deft.  
MANUFACTURED HOMES & LUMBER  
CORP.

Civ-1967-28 <sup>Closed</sup>

Plff.

Closed

Manufacturer's Agents

Civ. 4326

Plff.

Closed

Manufacturers' Casualty Insurance Co.

Civ. 1445

Deft.

MANUFACTURERS HANOVER

CL0500 CIV-77-701

MANUFACTURERS Hanover  
Trust Co.  
(Richard Metschl)

Misc.Civ. 81-189

U.S.A. & Revenue Ofcr Bloomquist

Pltf.

MANUFACTURERS HANOVER  
TRUST COMPANY

Closed Civ-1970-424

Misc. Civ. 76-64

Closed Civ-78-42

Pltf.

MANUFACTURERS HANOVER TRUST COMPANY Civ-81-181B

(E)

Fire Relief Association of Wayne County et al



Pltf

MANUFACTURERS HANOVER TRUST  
COMPANY/CENTRAL NEW YORK

Civ-81-857B(E)

Deft. Donald L. Harvey

B-81-20140

Deft.

MANUFACTURERS HANOVER TRUST COMPANY <sup>Closed</sup>

Civ. 11,845

Misc. Civ 79-74

Deft.

Manufacturers Hanover Trust Co.

*Closed*

Civ-80-1153B

United States of America

Deft.

MANUFACTURERS HANOVER  
Trust Company, Western  
N.A.

Misc.Civ. 81-22  
Misc.Civ. 81-23

U.S.A. & Rev.Agt. John DeArmitt

Deft.

Misc Civ-80-245B

MANUFACTURERS HANOVER TRUST COMPANY

U.S.A. & William R. Schirmer, etc.

DEFT

MISC CIV 80-255C

Manufacturers Hanover Trust Co.  
& Marion J. Acker

USA + 1

Deft.

Misc Civ 81-66C

MANUFACTURERS HANOVER TRUST COMPANY  
Custodian of Records Pertaining to  
ERNEST A. SAPIO

U.S.A. & 1

DEFT

Closed CIVIL 80-326

MANUFACTURERS HANOVER TRUST CO.  
(Western, N.Y.)

Carrie Walker



Deft.

The MANUFACTURERS LIFE  
INSURANCE COMPANY

Misc.Civ.77-41

Deft.

MANUFACTURERS & TRADERS  
TRUST COMPANY, Custodian  
of Records Pertaining to  
PAUL K. GERRING

Misc. Civ-82-186C

Pltf. U.S.A. & Michael A. Del Valle, of the  
Internal Revenue Service

Deft.

MANUFACTURERS & TRADERS

Misc.Civ-82-113C

TRUST CO.,

Custodian of Records

Pertaining to

IRVING LEFF

Pltf. U.S.A. & William Haslinger of the  
Internal Revenue Service

Deft.

MANUFACTURERS & TRADERS  
TRUST CO., Custodian  
of Records Pertaining  
to SEYMOUR BERNSTEIN

Misc.Civ-82-106C

Pltf. U.S.A. & William Haslinger of the  
Internal Revenue Service

Deft.  
MANUFACTURERS & TRADERS  
TRUST CO.,  
Custodian of Records  
Pertaining to Dexter  
Pharmacy

Misc.Civ-82-104C

Pltf. U.S.A. & William Haslinger of the  
Internal Revenue Service



Pltf.  
MANUFACTURERS AND TRADERS  
TRUST COMPANY

Civ-81-970C

Deft. Leroy T. Loyst

MANUFACTURERS & Traders  
Trust Co.  
(Richard M. Metschl)

Misc.Civ. 81-190

U.S.A. & Revenue Ofcr Bloomquist



Manufacturers & Traders  
Trust Company

Misc.Civ. 81-204

USA & Revenue Ofcr Krysztof

MANUFACTURERS & TRADERS  
Trust Company, Custodian  
of Records Pertaining to  
Richard J. Cino

Misc.Civ.81-170

USA & James F. Otwell, IRS

Deft.

Misc Civ 81-64C

MANUFACTURERS AND TRADERS TRUST COMPANY  
Custodian of Records Pertaining to  
ERNEST A. SAPIO

U.S.A. & 1

Deft.

Misc Civ-81-65C

MANUFACTURERS AND TRADERS TRUST COMPANY

Custodian of Records Pertaining to

ERNEST A. SAPIO

U.S.A. & 1

Deft.

MANUFACTURERS AND TRADERS TRUST CO

Closed Civ-80-1144B

U.S.A.

Pltf.

Manufacturers & Traders  
Trust Company

Civ-80-655E

SEE: BK-75-2338C

Harold P. Bulan, Trustee in Banruptcy of  
H. J. Otten Co., Inc, et al.

DEFT

CIVIL 80-581C

MANUFACTURERS & TRADERS TRUST

John & Annie Adams

PLTF

CIVIL 80-381

jtc

MANUFACTURERS & TRADERS TRUST

B.W. LANDSTREET, III

(a/k/a Beverly W. Landstreet, III)



Deft.  
Manufacturers & Traders  
Trust Company

JTC  
Closed Civ-80-396

United States of America

Deft.

Closed

Manufacturers & Traders Trust Co.-Schultz - Civ. 182

Dolcater Closed 312

Commander Closed 2139

U.S. Closed 6288

Johnston Closed 6436

U.S. Closed 7782

Cook Closed 9137

Fischer 9775

Grays Run Club Closed 10,708

Plff.

Closed

Manufacturers & Traders Trust Co. Civ. 1516

McGowan - 4435

Jordan<sup>closed</sup> Civ-1969-195

Closed Civ-1973-614

Closed Civ-76-179

Closed Civ-76-334

Civ-76-544

Closed Civ-79-75

Deft.

closed

M & T Trust Company

Civ. 6436

Manufacturers & Traders Trust  
Co., a corporation

Civ-81-197E

Richard S. Truesdale

## Deft.

Manufacturers & Traders Trust Co. - Area	Civ.	9817
Rethig		9694
Closed U. S.		10,023
Closed U.S.		10,638
Closed DeFerrari		10,827
Closed Sepielli		10,999
USA, closed	Civ-1967-109	
USA, closed	Civ-1968-233	
Van Aernam	Civ-1968-	259

Deft.

**Q10808**

Manufacturers & Traders Trust Co. of Western N. Y.

Civ. 9906

Deft.  
MANUFACTURERS AND TRADERS  
TRUST COMPANY

USA

(3).

Closed Civ-1971-83  
Closed Civ-1971-106  
Closed Civ-1972-77  
Closed Civ-1972-155  
Closed Civ-1973-164  
Closed Civ-75-227  
Closed Civ-76-241  
Closed Civ-76-318  
Closed Civ-76-550  
Closed Civ-77-87  
Closed Civ-77-186  
Closed Civ-77-201  
MISC CIV-78-14  
Misc civ 79-6



Deft.

MANUFACTURERS & TRADERS TRUST CO. Civ-77-76  
(Bk-73-1068)

Closed

Closed Civ-77-556 HPG

Closed 11-25-81

Deft.

MANUFACTURERS AND TRADERS  
TRUST COMPANY

Civ-78-116

Misc. Civ. 78-69

Misc. Civ. 78-70

Civ-79-97

Misc. Civ. 79-243

Misc. Civ. 79-73

~~Closed~~ Civ-79-487

~~Closed~~ Civ-79-515E

~~Closed~~ Civ-78-822

~~Closed~~ Civ-79-18

Deft.

MANUFACTURERS AND TRADERS  
TRUST CO.

Misc Civ-79-102

Deft.  
MANUFACTURERS AND TRADERS TRUST COMPANY

Misc Civ-79-150

150

Deft.  
Manufacturers and Traders  
Trust

Misc. Civ-79-167

Pltf.

Manufacturers and Traders  
Trust Company

~~Closed~~ Civ-79-945

SEE: BK-76-111

DEFT

~~Closed~~ CIVIL 80-1065C

MANUFACTURERS & TRADERS TRUST CO.

USA

Deft.

Manufacturers & Traders

Misc. Civ-80-225E

Trust Company, Custodian

of Records Pertaining to Paul K.

Gerring.

U.S.A. and Michael DelValle



Deft.

MANUFACTURERS & TRADERS TRUST COMPANY,  
a New York Corp.

CIV-80-360

COMPANY,

JTE

NAACP, et al

DEFT

MISC CIV 80-258C

MANUFACTURERS & TRADERS TRUST CO and  
Dante Marasi, Bank Officer

USA + 1

DEFT

Misc Civ 80-236C

Manufacturers & Traders Trust Co. &  
Dante Marasi

USA & Spec Agt James Otwell

Deft.

Manufacturers and Traders  
Trust Company

Misc. Civ-80-5

Robert S. wawrzyniak

Deft.

Manufacturers & Traders  
Trust Company

Civ-80-301

Missad Ali Ahmed & 1

Deft.

Marine Midland Bank,

Misc. Civ-80-162E

Custodian of Records

Pertaining to William E. Follendorf

U.S.A. and Robert S. Wawrzyniak

Deft.

Manufacuters & Traders                      Misc. Civ-80-161E  
Trust Co., Custodian of  
Records Pertaining to William  
E. Follendorf

U.S.A. and Robert S. Wawrzyniak

Deft

Misc Civ 80-20

MANUFACTURERS & TRADES TRUST  
(custodian of records for Bruce & Beth Tubin)

USA & IRS



Deft.

Manufacturers & Traders

Misc. Civ-80-27

Trust Company

(Rec. per to Clarence & Alice Perry)

U.S.A. & David P. Ciesla

Deft

Misc Civ 80-36

MANUFACTURERS & TRADERS TRUST CO.  
(custodian of records: C. Perry's Nurseries &  
Garden Center, Inc.)

USA & IRS

Deft.

Manufacturers & Traders  
Trust Co.

Misc. Civ-80-51

(Custodian of Records Pertaining to  
Robert S. Moser and Karen M. Moser)

U.S.A. and Michael R. Wilton

Deft.

Manufacturers & Traders  
Trust Co.

Misc. Civ-80-141

U.S.A. & John C. Coppola

DEFT

Closed CIVIL 80465C

MANUFACTURERS & TRADERS TRUST CO.

U.S.A.

Deft.

MANUFACTURING AND TRADERS TRUST  
COMPANY

Closed Civ-1973-90

Closed Civ-1973-105

Closed Civ-1973-253

Closed Civ-74-203

Closed Civ-74-568

Deft.

MANUSZEWSKI, Thomas A.

Misc.Civ-82-216C

Pltf. U.S.A. and Richard Vogel, Revenue Officer

Closed

Deft.

Mantolan, Primo

Div. 2520



Closed

Plff.

Manupello, Joan

Civ. 4234

Deft.

MANWARING, Darwin D.

PHOTOCiv-78-134

Deft.

MANWARING, Debra L.

Closed Civ-78-134

Deft.

Manwaring, Harold L.

Closed

Civ. 502

Deft.  
MANZ, Michael J.

Closed Civ-81-189E

United States of America

Pltf.

MANZANERES, Hiram

Closed Civ-1972-51

Deft.

Closed

Manzel, Nellie

Civ. 6288

Deft.

Class

Manzella, Andrea

Civ. 6036



Pltf.

MANZELLA, Carol

~~Closed~~ Civ-80-131 B

Delco Products Division/GMC

Pltf.

MANZELLA, Charles etc.

~~Closed~~ Civ-79-37

Closed

Plff.

Manzella, Joseph S.

Civ. 4706

Deft.

Closed

Manzella, Nate C.

Civ. 5312

Closed

Plff.

Manzella, Rose F.

Civ. 4707

Plff.

Closed

Manzella, Rose J.

Civ. 3373

Deft.

closed

Manzella, Vincent C.

Civ. 6785

Class

Doft.

Manzelli, Andrew

Civ. 6036



Deft.

Manzo, John

Closed v Civ. 4192

Closed v 4240

\*MANZO, Mary B.

Civil 79-982

\*Court of Common Pleas

Deft.

Closed

Ma Perkins Pies Inc.

Civ. 627

✓  
Closed

Deft.

Mapes, Betty Hane

Civ. 8215

Donor?

Dept.

Mapes, Hugh Lerpy

Civ. 8215

Dept.

Closet

MAPES WOODWORKING COMPANY, INC.

Civ. 7621

Plff.

Maphis, William H.

Closed

Civ. 3459

Deft.

Maple City Homes, Inc.

Civ. 9824



Deft

~~MMR~~

MAPLEHURST INDUSTRIES

~~Closed~~

Civ 78-852

Plff.

Maple Leaf Distributors, Inc.

Civ. 7990

MISC CIV 85-94

MAPLE SHADE HOTEL, INC.

IN THE MATTER OF THE  
TAX INDEBTEDNESS OF

Deft.

Closed

Maple Syrup, 18 one gal. cans

Div. 203

PLTF

CIVIL <sup>81</sup>82-525E

MAPLE, Willie Sr,

Thomas Coughlin, et. al.

Pltf.  
MAPP, Charles

Closed Civ-1972-84

Plff.

Mapp, James E.

Closed

Civ. 3344



# END OF ROLL

**BIELLS**  
1933  
MICROFILM CORP.

1201 INDIAN CHURCH ROAD  
BUFFALO, NEW YORK 14224  
AC (716) 676-2121