

2023

Maine Fuel Board

Code Update

Fuel Board Inspectors

Dale Hersey, Senior Inspector (207) 592-5864
(Waldo, Piscataquis, Penobscot south of Lincoln)

Cecil Hafford (207) 592-5043
(Aroostook, Washington, Hancock, Penobscot north of Lincoln)

Bruce Bristow (207) 592-4516
(Franklin, Kennebec, Androscoggin, Oxford, Somerset)

Paul Moody (207) 446-2826
(Knox, Lincoln, Sagadahoc, Cumberland, York)

Fuel Board Staff

Matthew Fournier

fuel.board@maine.gov

Testing

All Fuel Board testing is now open book.

Refer to the Candidate Information Packet located on the Maine Fuel Board webpage to find which books are allowed when taking a test.

Q Maine Fuel Board



- Q maine fuel board
- Q maine fuel board **laws and rules**
- Q maine fuel board **license search**
- Q maine fuel board **license**
- Q maine fuel board **contact**
- Q maine fuel board **email**
- Q maine fuel board **rules**

Google Search

I'm Feeling Lucky

Report inappropriate predictions

Search Maine Fuel Board



Maine Fuel Board



All

Images

Shopping

News

Videos

More

Tools

About 21,400,000 results (0.28 seconds)

**Click On
Link**



Maine.gov

<http://www.maine.gov> > pfr > professions > maine-fue... ⋮

[Maine Fuel Board | Office of Professional and Occupational ...](#) ✓

The **Maine Fuel Board** was established to oversee and protect the public through the regulation of propane and natural gas, oil and solid fuel burner ...

[Licensing](#) ✓

Maine Fuel Board - Licensing · A copy of your DD Form 214 ...

[Contact Us](#) ✓

Dale Hersey, 207-592-5864, Inspector - Covering Waldo ...

[Individual Licenses](#) ✓

Apprentice Oil Burner and/or Solid Fuel Technician · License fee of ...

[Online Services](#) ✓

You have the ability to look up information pertaining to many ...

[More results from maine.gov](#) » ✓

Maine Fuel Board | Office of Profi x +

maine.gov/pfr/professionallicensing/professions/maine-fuel-board

Maine.gov Agencies | Online Services | Help | Search Maine.gov Select Language

STATE OF MAINE
PROFESSIONAL & FINANCIAL REGULATION

Contact Us | File a Complaint | Sitemap

Search PFR SEARCH

PFR Home Consumer Credit Consumer Publications Financial Institutions Insurance Professional Licensing Securities Who We Regulate

Home → Professions and Occupations → Maine Fuel Board

Maine Fuel Board

Welcome to the website of the Office of Professional and Occupational Regulation, an agency within the Department of Professional and Financial Regulation. We appreciate your visit to our homepage and we look forward to assisting you.

Although our building in Gardiner, Maine is not open to the public due to the COVID-19 health emergency, our staff remains available to resolve your complaints, answer your questions, and continue to deliver high-quality services to consumers and regulated industries.

Please [contact us](#) by email or by phone or through our other online services, and we will assist you.

You may [follow this link to the Secretary of State's office](#) to view a list of board members. Members of the public should not contact board members with questions or comments. All questions, comments or any other board-related matters must be directed to the Board's manager. (Matthew.S.Kaply@maine.gov 207-624-8605)

GET NOTIFIED

Enter your email below for the latest Maine Fuel Board news, information and updates.

Go

ONLINE SERVICES

- [File a Complaint](#)
- [Renew a License](#)
- [Apply for a License](#)
- [Apply to take an Exam](#)
- [Apply for a Permit](#)
- [Request a Duplicate License](#)
- [Update Contact Information](#)

Maine Fuel Board Home
Board Meeting Information
Contact Us
Laws & Rules
News & Publications
File a Complaint
Licensing
Online Services
Examinations
Applications & Forms
Frequently Asked Questions

Scroll Down Page ↓

Information and Resources

Examination Information

The Maine Fuel Board has contracted with PROV, Inc. to provide its examinations for approved candidates. The [Candidate Information Bulletin \(PDF\)](#) helps explain the rules and processes candidates will need to undertake to complete the testing requirements for their professional licenses.

CETP Certification and Examination Requirements

All applications for examination as a propane and natural gas technician must be accompanied with the appropriate certificates and transcript. Please view the following curriculum map for certificate requisites for each authority: [CETP CERTIFICATION INFORMATION \(PDF\)](#)

PHCC Maine Fuel Board PowerPoint Presentations

[2022 Code Review \(PDF\)](#)

Code Editions

2023 Maine Laws & Rules

- 2020 NFPA 31
- 2021 NFPA 54
- 2020 NFPA 58
- 2019 NFPA 211
- 2020 NFPA 70

Heat Pumps

Heat Pumps

Who can install heat pumps?



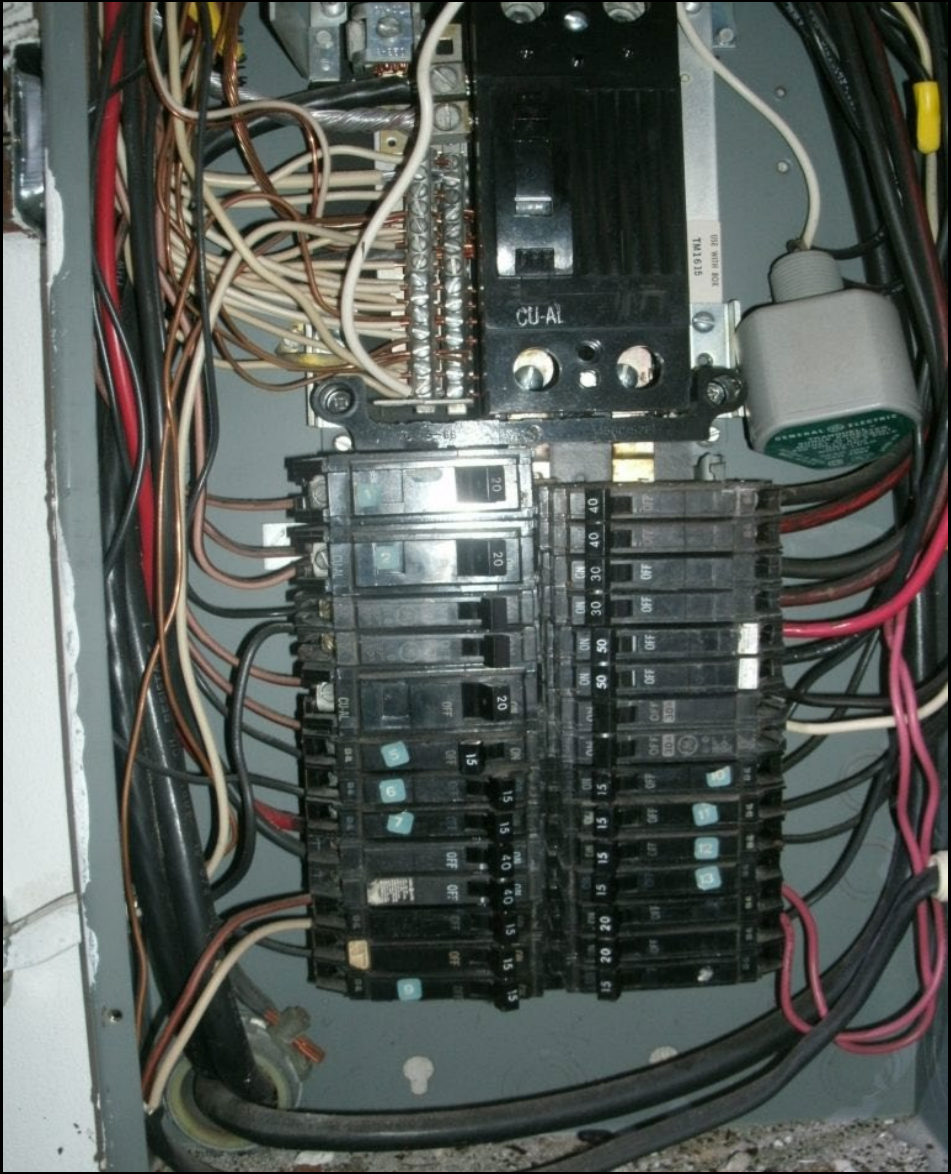
You Can!

Heat Pumps

Which license allows you to wire a heat pump?

Restrictions

- There must be space & capacity in electrical panel
- Unit size must not exceed 36k BTU/h
- Must be located in a one or two family home
- Cannot install a service receptacle
- Must not install closer than 10' to a propane tank









Heat Loss/Load Calculations

Heat Loss

When is a heat loss evaluation required to be done?

How long must *YOU*, the installer, keep those calculations in your files?

Condensate Removal

Condensate Removal

Whenever a fuel-fired condensing appliance is installed, the condensate must be disposed of in the following manner...

Condensate Removal

- **An approved neutralizer must be installed**
- **Condensate must enter the sanitary system through an open receptor**
- **Vinyl tubing from condensate pump must only be utilized vertically from the pump**
- **Pump must be interlocked electrically with appliance to stop operation in case of pump failure**



Condensate Removal

These rules must be followed in all municipalities, despite what a local plumbing inspector may tell you...

Domestic Water Piping

Domestic Water Piping

A properly licensed technician may connect hot & cold water piping to a fuel-fired appliance and/or indirect-fired water heater as long as the existing piping is located in the same room as the appliance is being installed.



Press Fittings

Press Fittings

Press fittings are allowed on all piping, including oil tank fill and vent piping, as long as the fitting is listed for such use

Oil Tank Removal

Oil Tank Removal

When removing an oil system permanently and transitioning to another fuel source,

You must...

Oil Tank Removal

- Remove all fill, vent and burner supply piping
- Remove and clean all oil, sludge and residuals from tank
- Remove tank from property and dispose of in accordance with local requirements
- Have a Journeyman or Master oil license



Wiring

Wiring

Each fuel-fired Central Heating Appliance must be on its own circuit and must include the following....

- An emergency switch, located outside of / adjacent to entry to appliance room
- A thermal switch, located at the highest point above the front of the appliance
- A service switch, located within 3' of the burner

Chimneys

Chimney Cleanouts

Chimney cleanouts must be installed with the lower edge 16" off the floor.

If lining a chimney with a liner that is listed as having the base tee used as the cleanout, the existing chimney cleanout must be mortared closed.



Chimney Clearance

If a solid fuel appliance is being added to an interior masonry chimney, the chimney requires 2" of clearance to combustibles





Chimney Firestop

All masonry chimneys must have a firestop installed at each level of the home that the chimney passes through.

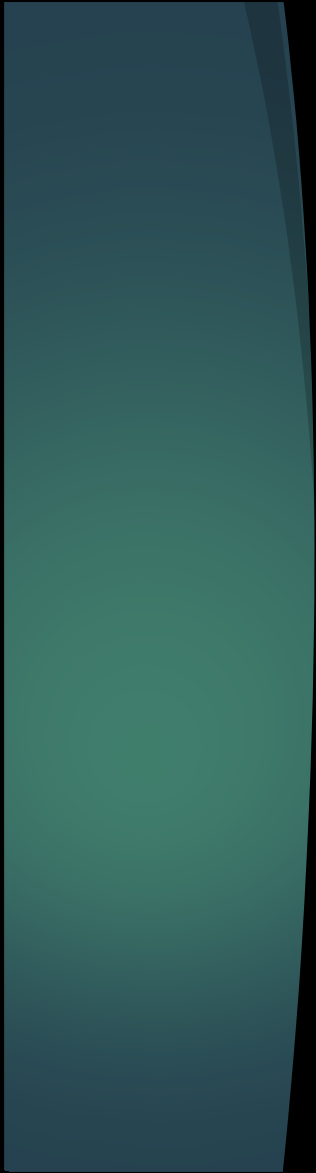


Propane Containers

Container Location

Propane containers may be located under an opening into the building as long as the opening is not lower than the relief valve discharge point





Gas Piping

All gas outlets, including valves, shall be closed gastight with a threaded plug or cap immediately after installation and until an appliance is connected to the outlet.

If an appliance is disconnected, the outlet must be capped or plugged gastight.









2023 Rule Changes

Rule Changes

Any code violations viewed by an oil -
solid fuel - gas licensee must be
reported to the owner...

In Writing

Rule Changes

Regardless of amount spilled...

Oil spills must be reported to the DEP
within 2 hours of identifying the spill.

1-800-482-0777



Rule Changes

All PEX tubing and fittings used in heating systems must be listed by the manufacturer for use on heating systems and be manufactured with an oxygen barrier.



Rule Changes

When installing a solid-fuel burning appliance, the licensee must provide a copy of the heat loss / load calculation and manufacturers instructions to the owner

Rule Changes

Gas piping systems $\frac{1}{2}$ " ID or larger and located inside buildings must now be permanently identified using one of the following methods ...

Rule Changes

With a sticker having a yellow background with black lettering identifying the pipe as containing “flammable gas.” There must be at least one sticker per room, a sticker every 8’ of pipe length and must be visible



NATURAL GAS



PROPANE GAS

Rule Changes

A continuous stripe of yellow paint or manufacturer provided yellow covering may be utilized. The paint or covering must be continuous along the entire length of piping and must be visible from floor level.



Rule Changes

The installation of unvented heaters is prohibited in bedrooms, bathrooms and manufactured homes



Rule Changes

Where any type of motorized vehicle traffic is expected, cylinder exchange systems must be provided with vehicle protection.

Additionally, cylinder cages must be located a minimum of 10' away from any opening into the building



2020 NFPA 31

Secondary Containment

Outside oil tanks that either have a side-outlet or is set up with a top draw must have secondary containment equal to 110% of the tank capacity





Firomatic Valves

Where an oil filter and the inlet connection of the oil pump are within 18" of each other, only one firomatic valve, located at the inlet of the filter, is required



Service Receptacle

A single AFCI/GFCI protected service receptacle may be installed in the safety circuit in the same location as the service switch

2021 NFPA 54

Outside Piping

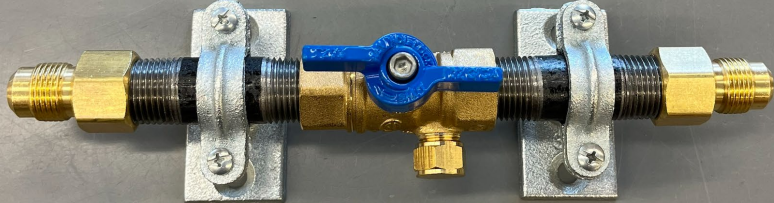
All piping installed outside must be a minimum of 3 ½” above the ground/surface/roof





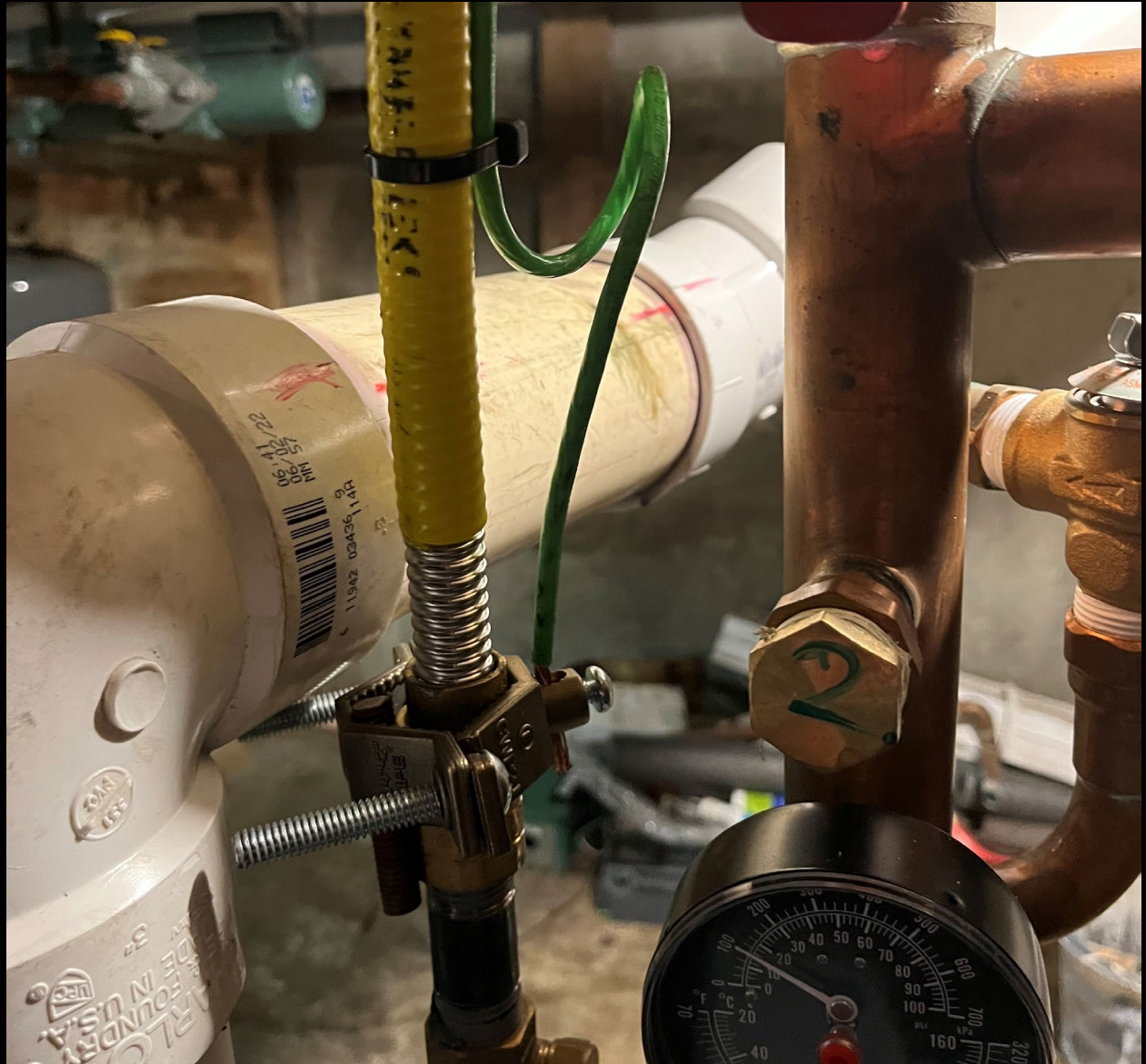
Shutoff Valves

Shutoff valves in tubing systems that are installed in concealed locations must be rigidly & securely supported independently of tubing



Bonding CSST

Bonding can now take place anywhere in the system but must be connected at a steel pipe, steel fitting or a CSST fitting.



Bonding CSST

Bonding wire is limited to 75' lengths.

Bonding CSST

If you use arc-resistant jacketed CSST and it is connected to an appliance that is connected to the ground system circuit, it shall be considered bonded.



Bonding CSST

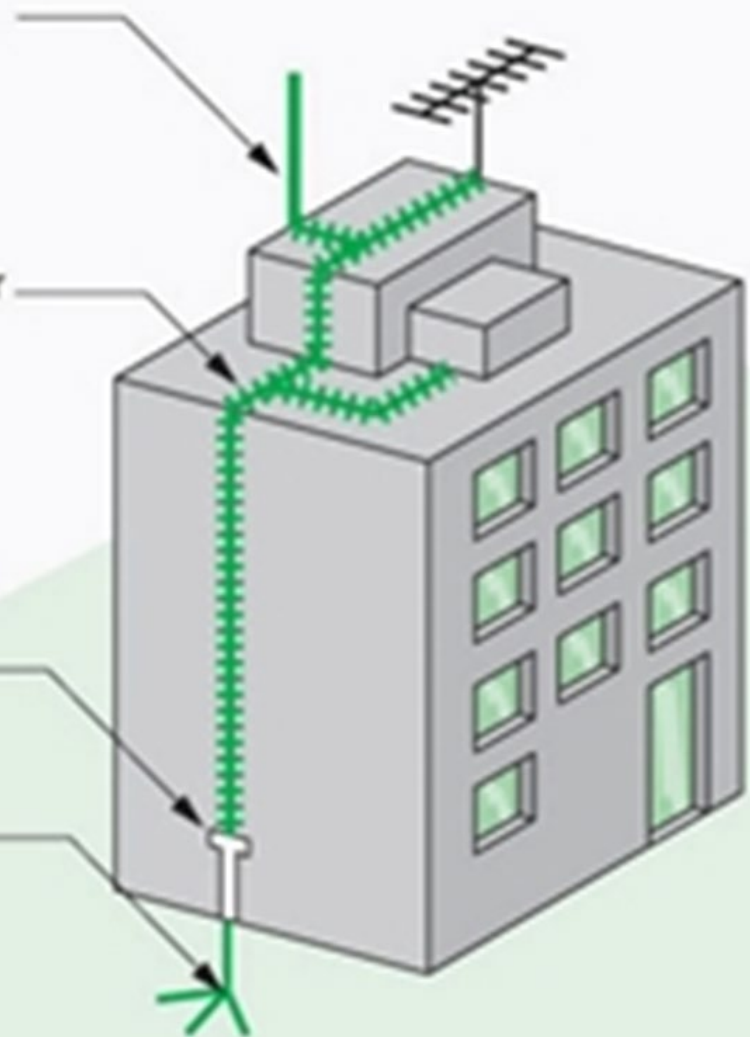
If a lightning protection grounding electrode system is available, CSST may be bonded to that

Simple lightning rod

Earth down-conductor (copper strip)

Check terminal

"Crow's foot" earth lead



Appliance Vent Termination

Vent Termination

Clearances for direct vent and non-direct vent vent terminations shall be in accordance with the following slides..

Vent Termination

Clearance above ground, porch, deck, etc. -

12"

Vent Termination

Clearance to openings into building

- 10k Btu/h or less 6”
- 10k Btu/h – 50k Btu/h 9”
- 50k Btu/h – 150k Btu/h 12”
- Over 150k Btu/h – In compliance with manufacturer’s instructions but not less than 4’ below or to side and 1’ above the opening



Vent Termination

Clearance to underside of porch, deck,
balcony -

12"

As long as the area is open on at least two
sides



Vent Termination

Clearance to mechanical air supply inlet -

10' horizontally

and/or

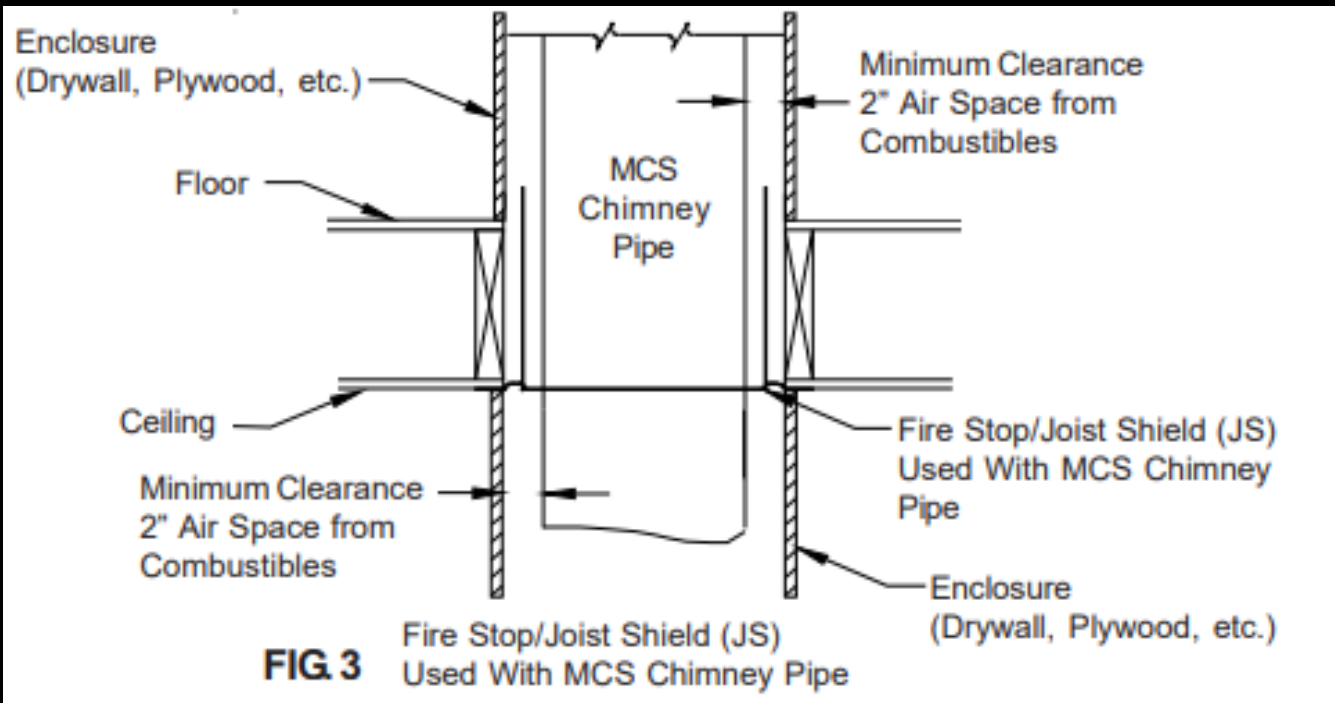
3' above

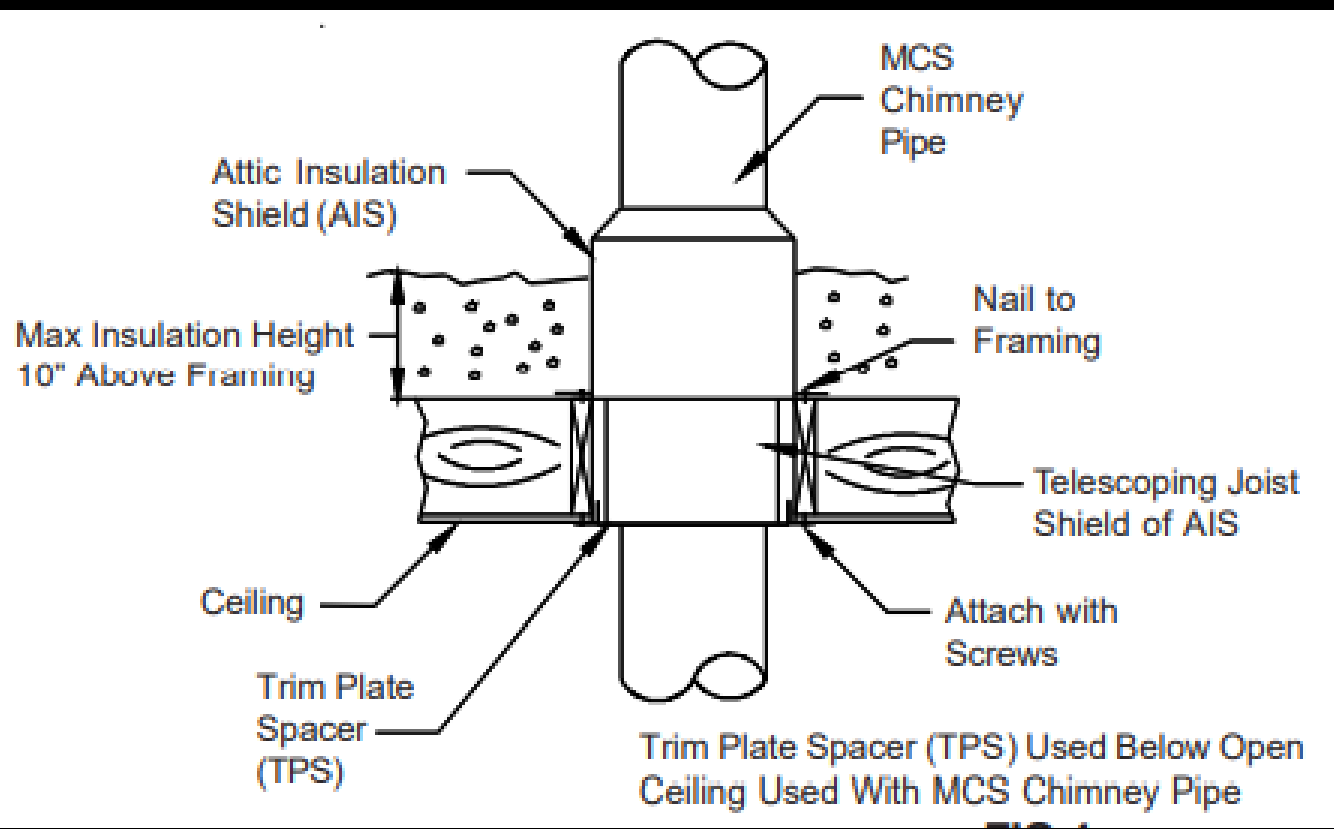


Insulation Shield

When installing a factory-built chimney and the chimney passes through an insulated partition, a 26-gauge shield must be installed to maintain the required clearance to combustibles.

In attics, the shield must terminate 2" above the insulation and be fixed in place.





2020 NFPA 58

Important Buildings

What is an important building?



Important Buildings

NFPA defines an important building as

**“Any building that is considered to not
be expendable in a fire”**





LP Gas Systems

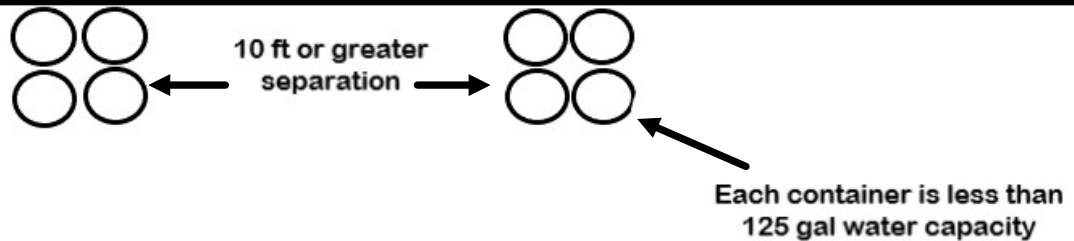
LP Gas Systems

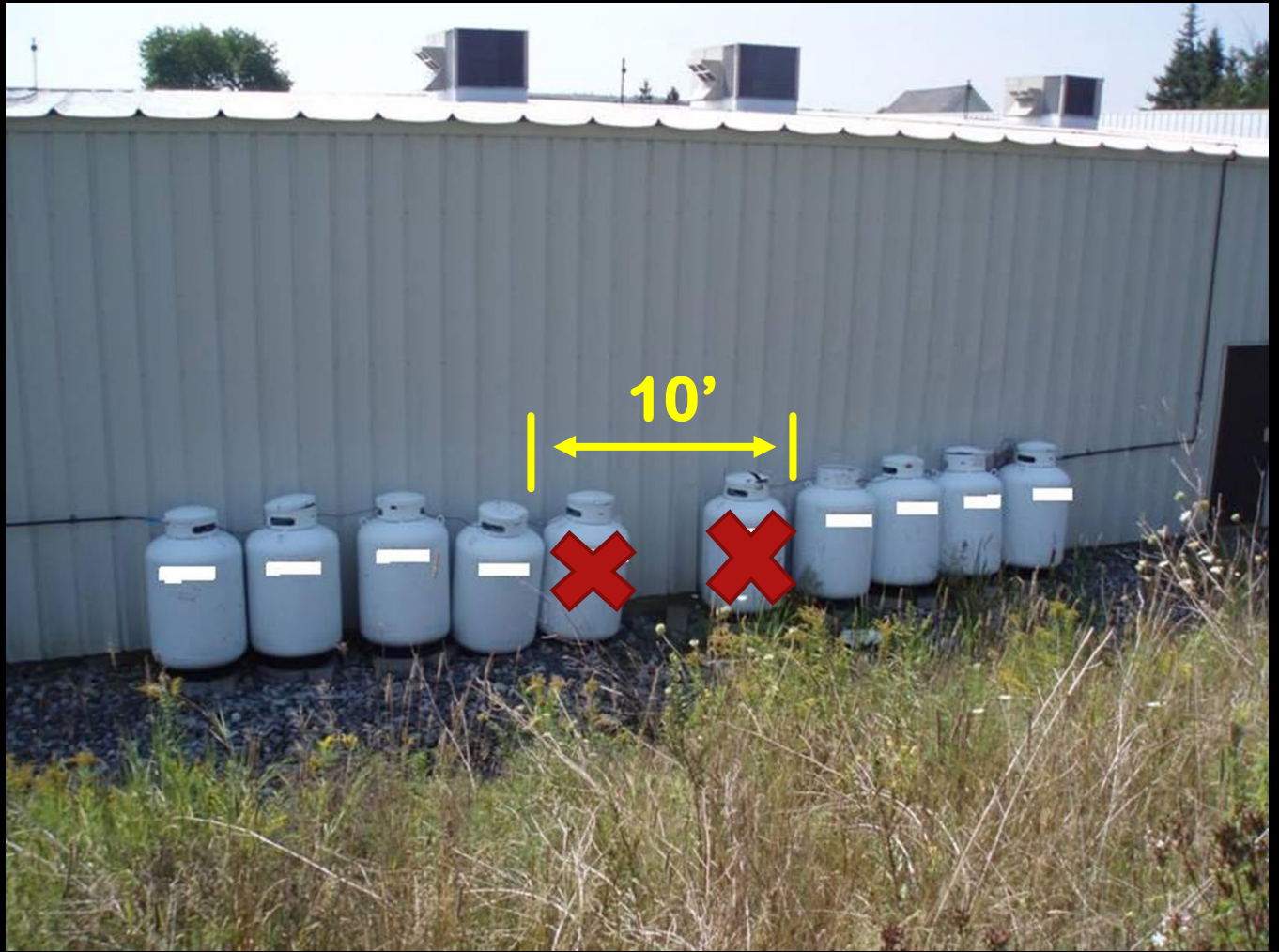
When installing a group of containers with less than 125 gallons water capacity each, and with 500 gallons or less combined capacity, the distance required to another group of such containers will be a minimum of 10'

Building

Case 1: Two groups of 120 gal water capacity containers 10 ft or more from each other, making the aggregate capacity 480 gal

6.4.3(1) requires zero separation from the building for an aggregate capacity less than 500 gal in each group





LP Gas Systems

LP Gas containers located within 10' of a public way must be have vehicle protection



LP Gas Systems

All aboveground gas piping, fittings and equipment must be protected from corrosion



LP Gas Systems

**Aboveground piping shall
be protected from vehicle damage**



Questions?