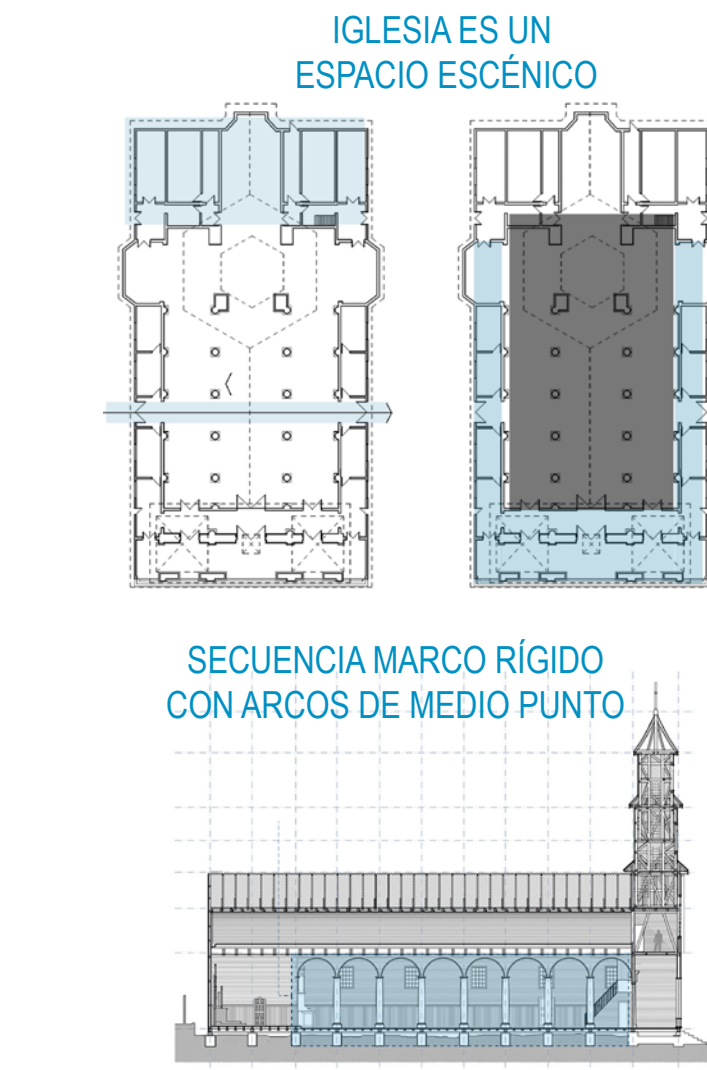
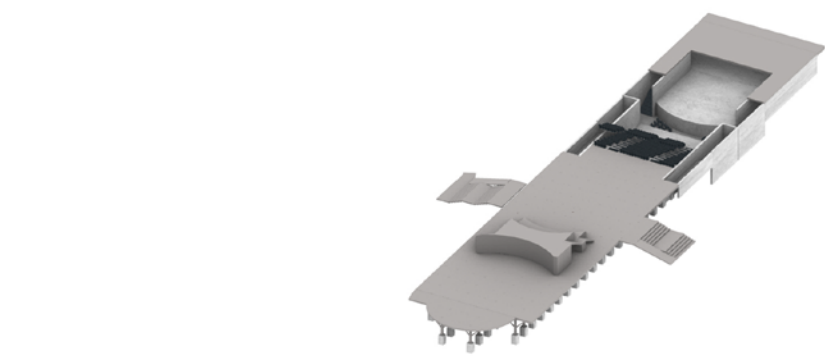


ANÁLISIS SISTEMAS CONSTRUCTIVOS LOCALES

ESCUELA DE ARQUITECTURA RELIGIOSA
-Similitud distribución espacial con teatros
-Uniones de ensambles y empalmes



ESTRATEGIA FORMAL Y ESTRUCTURAL

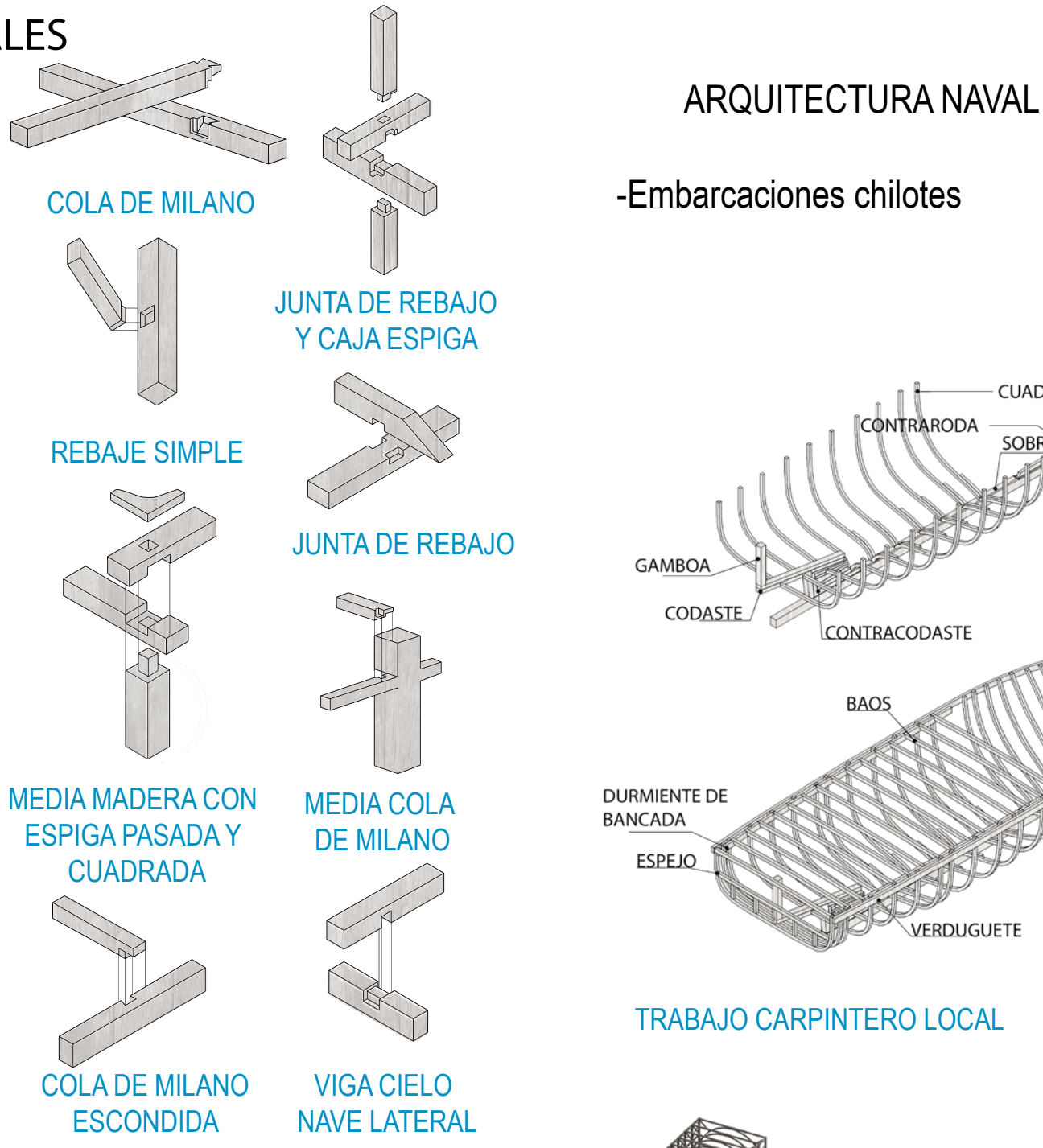


SE CREAN DOS ÁREAS TEATRALES Y UN ESPACIO COLECTIVO CENTRAL QUE RESCATAN EL SISTEMA CONSTRUCTIVO DE LAS IGLESIAS DE CHILOÉ SI, SIENDO ESTOS AUTOESTRUCTURANTES

SECUENCIA DE MARCOS RÍGIDOS CON ARCOS DE MEDIO PUNTO DE PILARES COMPUESTOS

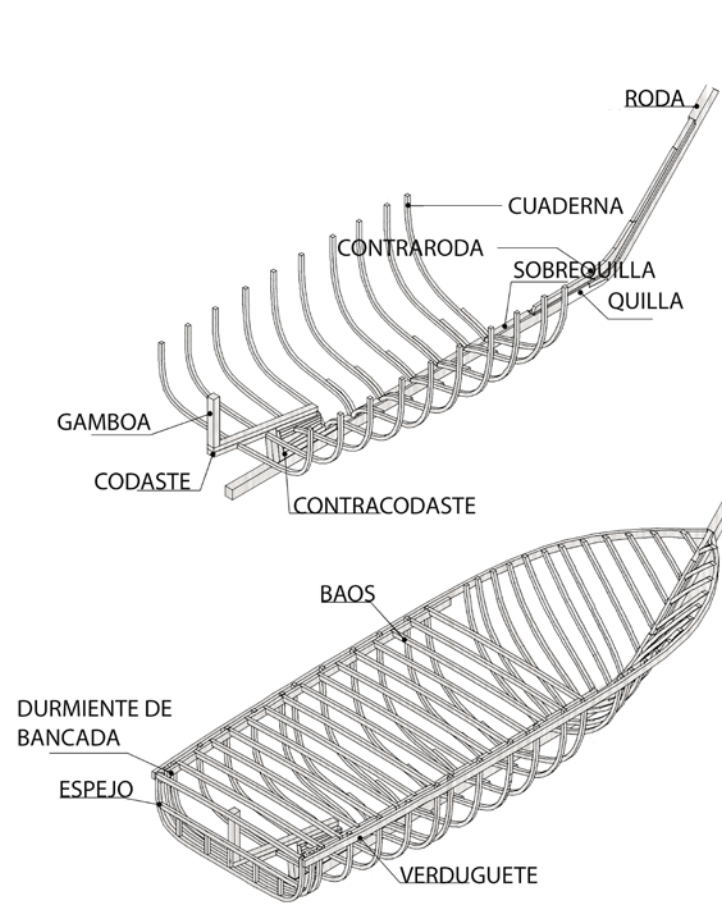
CIRCULACIONES LATERALES QUE SE ABALCONANA AL ESPACIO CENTRAL

REVESTIMIENTO SKIN ON FRAME EN TODAS LAS FACHADAS Y EN TECHO

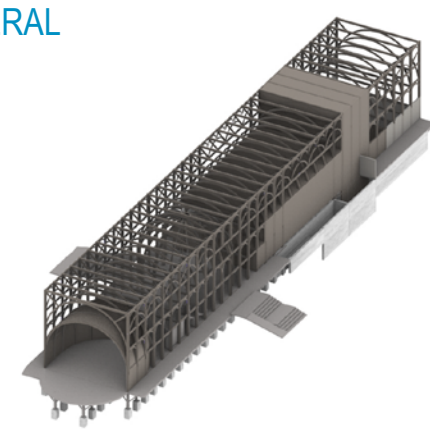


ARQUITECTURA NAVAL

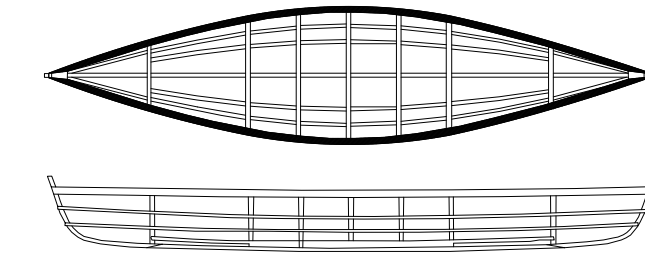
-Embarcaciones chilotas



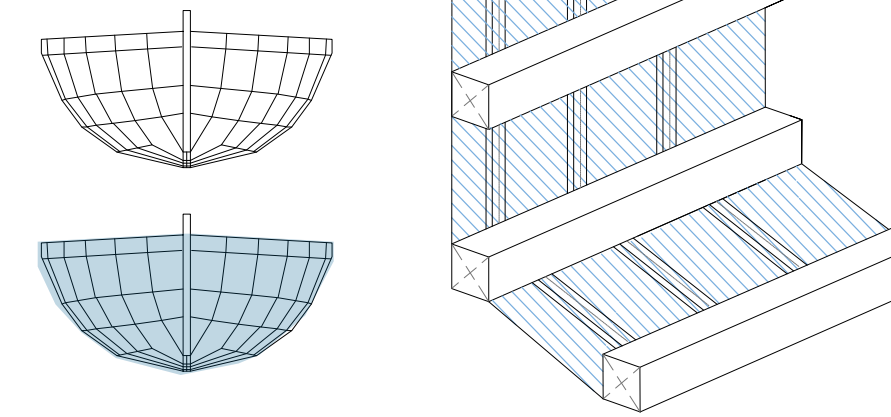
TRABAJO CARPINTERO LOCAL



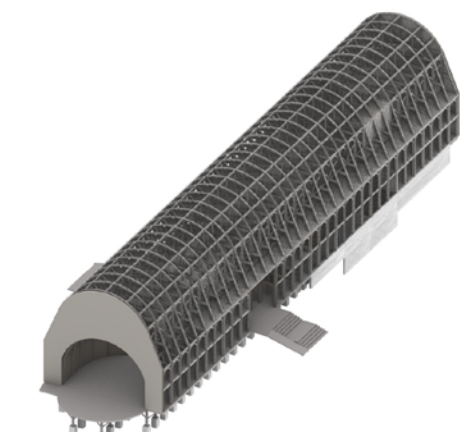
-Técnica skin on frame



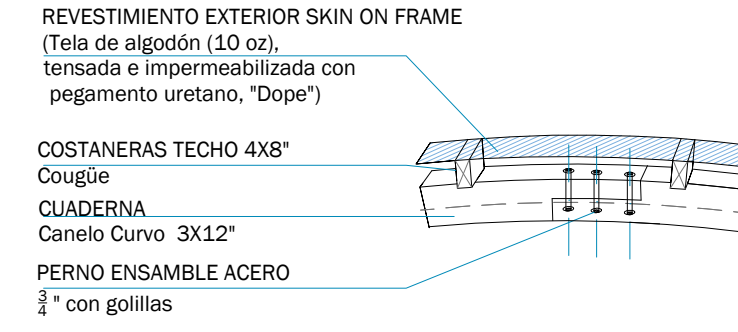
ESQUELETO DE MADERA



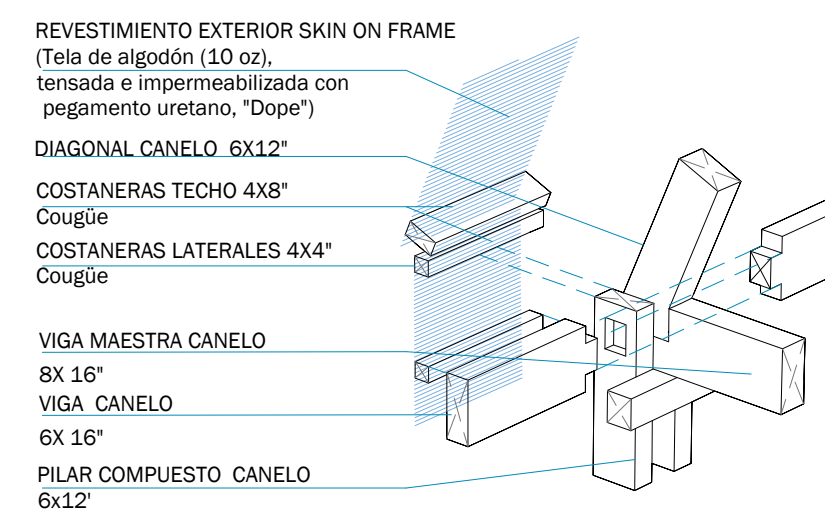
REVESTIMIENTO DE TELA TENSADA IMPERMEABILIZADA CON UREIATANO



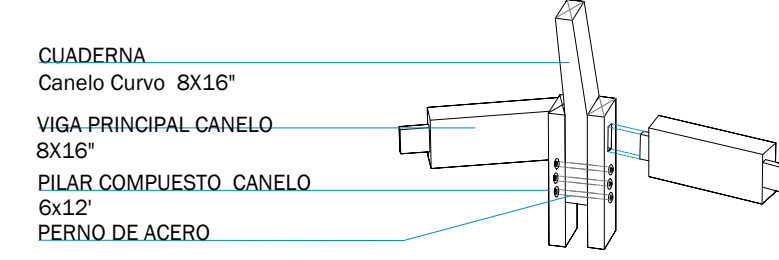
DETALLE 1- UNIÓN TRADICIONAL CUADERNAS



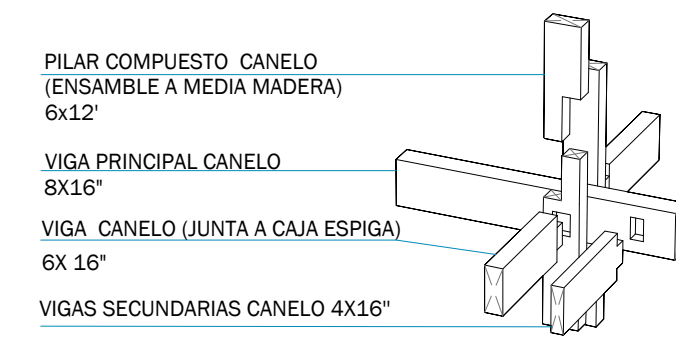
DETALLE 2: PILAR COMPUESTO - VIGA MAESTRA



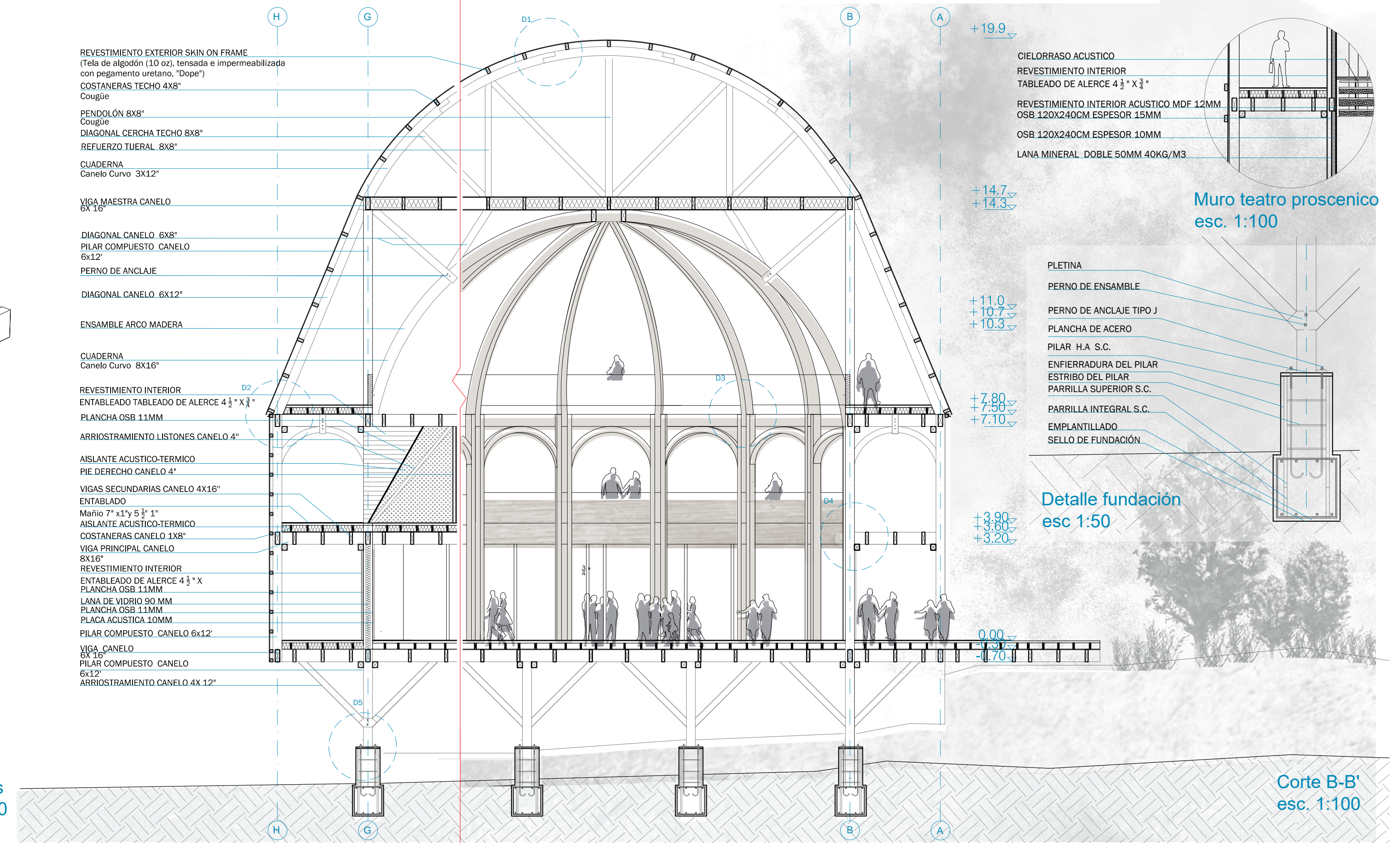
DETALLE 3: UNIÓN PILARES CÚPULA



DETALLE 4: PILAR - VIGA PRINCIPAL-COSTILLAS



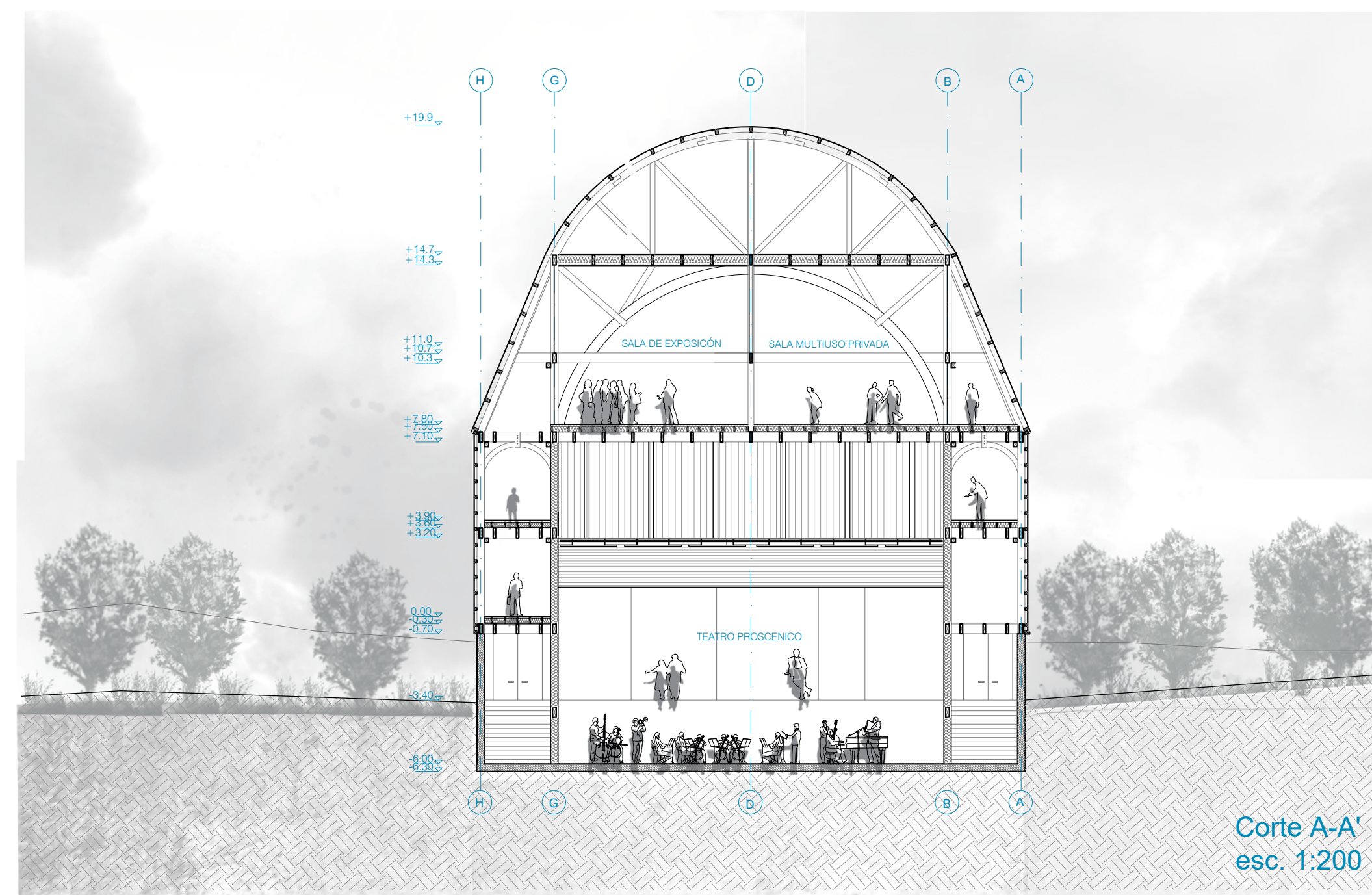
Detalles esc 1:50



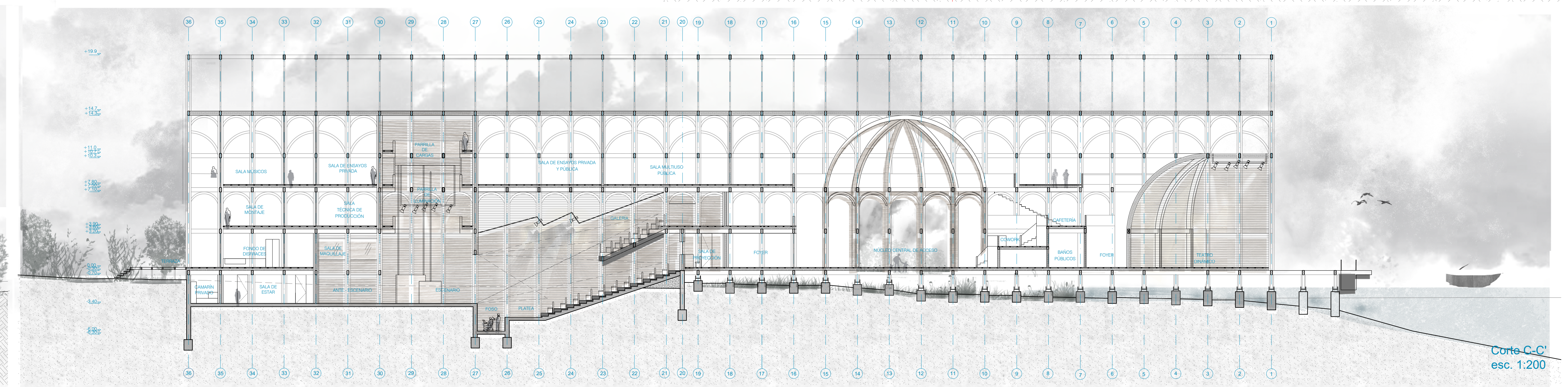
Muro teatro proscenico esc. 1:100

Detalle fundación esc 1:50

Corte B-B' esc. 1:100



Corte A-A' esc. 1:200



Corte C-C' esc. 1:200