



FEBRUARY • MARCH 1951

ROCHESTER

ALUMNI • ALUMNAE

REVIEW



IN THIS ISSUE

Challenge
To Education PAGE 3

Giving Funds
Campaign Set PAGE 5

University Role
In Re-Arming PAGE 7

Alumni Bequest
Committee Acts PAGE 9

“Centennial Ode”
Records Offered PAGE 9

University Costs
More Than Doubled PAGE 11

Freshmen of the second century: Jim Armstrong and Sally Johnson. (See Page 2.)

The Rochester Alumni-Alumnae Review

DISTRIBUTED AMONG THE GRADUATES AND UNDER-GRADUATES OF THE UNIVERSITY OF ROCHESTER

Vol. XII, No. 2

Published quarterly, in February, May, August and November by the University of Rochester for the Associated Alumni and the Alumnae Association at the Cayuga Press, Ithaca, N. Y. Editorial Office, 15 Prince St., Rochester 3, N. Y. *Co-editors:* Charles F. Cole, '25, and Warren Phillips, '37. Application for second class reentry pending at Ithaca, N. Y.

FEBRUARY-MARCH
1951

Time of Crisis . . . An Editorial

THE national emergency has engendered anxiety, uncertainty, and reluctance among college students of this country. It also has created serious problems for the University of Rochester and other educational institutions everywhere—problems of a large but as yet undetermined enrollment decrease, of finances, and maintaining staff and programs.

Most of all, the University seeks to make the best possible use of its physical and human resources for the nation's defense. That, as Provost Gilbert points out in an article in this issue, must have first priority, for, as he says, universities and colleges are among the nation's "greatest sinews of war."

The administration and faculty are giving their most careful thought and judgment to determining the ways in which the University can best serve the nation's needs, both military and civilian. Articles in this *Review* by President-elect de Kiewiet and Provost Gilbert describe some of the critical decisions which must be made, and the considerations, both practical and intangible, involved.

Obviously, a reduced enrollment poses the companion problem of lowered operating income. The annual report of the University Treasurer, summarized herein, gives hard facts on the tremendous increase in costs in recent years without proportional gains in endowment to offset that rise. With the prospect of

further reduction in normal income, this situation becomes even more difficult. It will require a detailed reappraisal of all of the University's activities to determine which are most and least essential.

Already, Rochester alumni are gathering their forces and mustering their energies to take their part in meeting the crisis. A bequest committee has presented a forthright program to attract bequests to our University so as to add substantially to endowment, in order to maintain the gains it has made and to increase the effectiveness of its teaching and research programs.

The annual alumni-alumnae fund drive is announced as opening on February 28 to provide that annual contributions to operating expenses that has become more necessary and valuable each year.

Alumni and undergraduates are aiding in the recruiting of students under the direction of the Admissions Office so that Rochester can meet the competition for students.

It will require the devoted and united efforts of alumni, faculty, administration, and undergraduates to help the University meet its responsibilities both in the national crisis and in the future. We are confident that the articles by Dr. de Kiewiet and Provost Gilbert will help to make clear the issues involved, and to inspire that loyalty and unity of purpose.

OUR COVER PHOTO

Representative of the first freshman class of the University's second century are our cover subjects—Jim Armstrong, who comes from Oak Park, Ill., and Sally Johnson, of Binghamton, N.Y. Good-looking, intelligent, undismayed by the uncertainties of the future but alert to the problems which they will have to help solve, they are typical of the new college generation. Arm-

strong is a blond, strapping six-footer who was a star tackle on the frosh football team and is center on the frosh basketball team. He holds a Welles Scholarship. Sally, also a blonde, is a graduate of Dana Hall, where she was senior class president, member of the drama and glee clubs, class hockey, basketball and lacrosse teams, and a participant in many other activities.

Challenge to Education: Arm and Fortify the Spirit

By PRESIDENT-ELECT CORNELIS W. DE KIEWIET

ANY writing at this hour is done in the shadow of national emergency. A year ago there seemed to be more people with us than against us. Today if there were a major outbreak of hostilities those against us might be greater in number than those upon whom we can surely count.

We are about ready to deploy our forces. The decision to increase our armed strength has been made. A great debate has been joined on the proper foreign policy for our country to follow. Mr. Hoover has performed the proper role of a senior statesman in offering a drastically revised foreign policy for our consideration.

Many people, including myself, do not agree with Mr. Hoover. Yet he has stated the main issues. He believes that we have misjudged our power, our enemies, and maybe our friends. If we add his words to those of other senior statesmen we recognize that we face the worst crisis of American history.

As an historian I agree with this somber judgment. It is our obligation as citizens to continue the debate which Mr. Hoover has begun. His personal conclusions are less impressive than the process of review and reconsideration which he has begun. To a host of questions we must find adequate answers. Have we been living too much on the margin of the present? Should we cling to all of our strategic positions? Withdraw from some? Which? Why? Who are our friends? How can we support them? Should we fight a war, seeking it where our chances of success are greatest? Or should we avoid war, feeling that democracies can win more easily in the field than hold the peace? Will we be so exhausted after a war that, even as victors, we shall have to embrace the ways of the vanquished?

Of all the questions which we should ask ourselves, the most meaningful in my judgment is this: What can be done to enkindle and keep nobly aflame the spirit of hope and courage in the young men and women of our country? The awful burdens which confront America bear with especial weight on their minds and bodies.

An hour spent with any student group reveals the anxiety in their minds and the reluctance in their souls. Why, they ask, should this great affliction descend upon their generation? Can they, by making great sacrifices, transcend it, and finally achieve a better world with guarantees that two world wars have failed to produce? In our universities there are generals who should not try to be college presidents, and college presidents who should not try to be generals. So far they have developed plans for mobilizing students, but few convincing thoughts on why it is necessary to be mobilized.

Since hope and confidence and resoluteness are a greater armament than guns and bombs, we must work to produce them in our young men and women. We need guns and bombs, and the power of defense beyond anything we could have conceived 10 years ago. But the great task of education is still to arm and fortify the spirit. We must evolve a national and foreign policy in which we can have faith. We must give our students an aspiration towards the future that will shine through the present gloom. Above all we must relieve their minds of feelings of exposure and loneliness.

In all the present plans for mobilization, military training, and war effort, there is too much emphasis on what the young people are going to have to do. This is morally wrong and psychologically dangerous. The senior generation — alumni, teachers, parents, workers, industrialists, politicians — can render no greater service than to express in tangible shape their utter solidarity with the young people. I am sure that the senior generation means this, but it must express it unambiguously. Otherwise there is a real danger of a split in our society, at the worst even a revolt of new generations against the old.

Total involvement is the only doctrine worthy of the adult citizen. Mr. Conant's much publicized plan for military training may be technically expedient. Yet he lost a great opportunity when he did not speak from that great platform which he enjoys, in words that men might remember and quote for their com-

fort, that behind the 18-year-old were closing the firm ranks of those who were twice and thrice 18 years old. Anything less deepens the sense of anxiety and reluctance which darkens these months.

Teachers, parents, and no doubt alumni as well, are advising students to go about their work as normally and calmly as possible. This is wise and proper counsel. Perhaps the danger will be averted. In any event education and training are needed in war as well as in peace. Yet I hope that somewhere in this country a college may be found daring and imaginative enough to suspend its normal life for a few days. Instead of classes and laboratories let there be conference and discussion and talk, organized or free, in small groups or large, with free opportunity for many people and many points of view. On such an unusual occasion men of national repute might be happy and proud to play a part. The purpose? Not, I would say, to solve any major problems about Pacific strategy, the number of divisions to be sent to Europe, or the best propaganda techniques to be used against the

Soviet Union. The purpose would be to reveal the common concern of young and old, to bring into view the solidarity of the generations, to perform a symbolic and memorable act of involvement in the greatest crisis of all our history.

The adult generation, with power and influence in its hand, needs courage and honesty, to declare itself wrong where it has been wrong, to yield those things now that are necessary in order that another generation may acquire more richly in the future. As a country we have called many good and beautiful things into being. Happily we can call even better things into being.

The better things to which we aspire are not in the first place material. They are the assurance that men can exercise their talents in the full span of years allotted them. They are peace, justice and health. Above all of these I would set an expanding spirit of human charity. The great admonition to faith, hope and charity is still new and indispensable in our age of crisis.

—R—

Inauguration of Dr. de Kiewiet Scheduled for Monday, June 11

THE Board of Trustees has set Monday evening, June 11, for the inauguration of Dr. de Kiewiet as Rochester's fifth president. Details of the program will be announced later.

Dr. de Kiewiet will take part in Cornell University's commencement that morning, making his final official appearance as Cornell's acting president.

Tuesday morning, June 12, he will preside at Rochester's 101st annual commencement program. The UR commencement date was originally scheduled for June 11, but was changed to enable Dr. de Kiewiet to be present as president of the University.

In the latter part of January, Dr. de Kiewiet left on a special mission to East Africa, on leave from Cornell, to direct a study on economic and racial problems there, under a grant from the Carnegie Corporation and administered through the Institute of International Education. He plans to return to Cornell about June 5. He will direct a team of five distinguished American scholars in the fields of psychology, anthropology, economics, history, sociology and

geography in the African study, which is planned to enrich the knowledge and understanding of East Africa in this country.

Alumni-Alumnae Annual Giving 1950 Summary

(Where the donor is a matriculate of two schools, credit for his or her contribution has been given to both schools unless otherwise designated by the donor.)

Alumnae Fund	\$10,980.80
Alumni Fund	26,138.98
Medical School Alumni Scholarship and Loan Fund	3,585.00
Eastman School Alumni Student Loan Fund	3,268.50
	\$43,973.28

Analysis of gifts to the several alumni-alumnae giving funds by classes may be found on Pages 17-30.

Margaret Coyne Klem, '18, Addresses Annual Alumni-Alumnae Dinner Meeting

IF the nation is to meet its all-out production program both for defense and civilian needs, the health of not only its industrial workers but all citizens is of paramount importance, in the opinion of Margaret

Coyne Klem, '18, chief of the Medical Program Branch, Industrial Hygiene Division of the U. S. Public Health Service.

Miss Klem was the principal speaker at the annual Alumni-Alumnae dinner held on January 23 in Cutler Union. Her subject was "Fit for What?"

In the present national crisis, the need for greatly increased production of goods and equipment of every kind is urgent, she said. To prevent delays

and shortages through time lost by workers from illness, their health must be closely safeguarded. Additional problems of keeping workers well and on the job will be encountered with the employment of retired persons, the elderly and the handicapped to augment industrial output, she declared. The program concerns not only unskilled workers, but professional people, housewives, and all segments of the public, Miss Klem pointed out.

One of 13 distinguished alumni and alumnae to receive special citations at the University's Centennial Alumni-Alumnae Convocation last June, Miss Klem has served as technical adviser and on medical care programs to the chief of the Division of Industrial Hygiene, the Surgeon General of the Public Health Service and other officials of the Federal Security Agency since August, 1949. Previously she was chief of the Medical Economics Studies, Bureau of Research and Statistics, Social Security Administration.

Co-chairmen of the dinner were Helen Hagood Van de Vate, '26, Daniel Metzendorf, '38, and Peter Braal, '31. Serving on the committee were Geraldine Rayment, '49, Jessie Woodams Barry and Evelyn Crouch Menzie, both '18, Ruth A. Swanker, '50, and Marie LeMay Woodams, '24.



Margaret Coyne Klem

1951 Giving Funds Campaign Set For Launching on February 28

TODD Union will be the place, and February 28 the date of the "kick-off" dinner for decade and class fund agents of the 1951 Alumni-Alumnae Giving Funds campaign.

Though the 1950 fund drive fell short of its \$50,000 goal, the 1951 committee again aims at \$50,000. Emphasis in the drive will be placed on the University's real need for these funds as an aid to meeting current expenses out of income seriously reduced by a lower anticipated enrollment. A particular aim will be to increase the average gift which last year was \$9, a figure much below the national average which stood at \$27.93 in 1949. In percentage of contributors Rochester stands well up on the list of colleges and universities with 55% contributing and only Dartmouth and Vassar showing higher percentages.

An innovation of the 1951 campaign will be the introduction of geographical fund agents for regional alumni associations. All regional groups will not be solicited, but tests will be instituted in several areas.

As in recent years the 1951 fund campaign is under the supervision of a co-ordinating committee representing various divisions of the University. Ezra A. Hale, '16, heads this joint committee aided by Nicholas E. Brown, '28 as vice-chairman. Committee members include Howard Henderson, '17, president of the Associated Alumni; Violet Jackling Somers, '23, president of the Alumnae Association; Raymond Hasenauer, '29, president of the Eastman Alumni Association; Doris Johns Cherry, '43, Fund Drive chairman, College for Women; Jerome Smith, '32, Fund Drive chairman for Eastman School; Dr. Fletcher McAmmond, '31, and Dr. Priscilla Cummings, '43, Fund Drive co-chairmen for the Medical School; Provost co-chairmen for the Medical School; Provost Donald W. Gilbert, '22; Raymond L. Thompson, '17; Ann Bayer Birmingham, Jane Dibble, '48, and George McKelvey, '50.

For a complete report on the 1950 Alumni-Alumnae Annual Giving Fund Campaign, see Pages 17 through 32.

Alumni, Faculty, Students Collaborate in Stagers' Production

AS the final social and cultural campus event of the Centennial celebration, the University Stagers' production of "The Madwoman of Chaillot" was a luminous example of inter-campus collaboration by faculty, students, members of the college staffs in many departments, alumni and alumnae.

An artistic and financial triumph, the delightful fantastic comedy by Jean Giraudoux played to full houses for three nights running. Nearly 200 persons took part in the production as players, members of technical, publicity, scene design and stage crews, and other capacities. The presentation was one of the first in the country by an amateur group following the play's highly successful New York run.

The cast of 40 was pretty well divided between faculty and students. In the title role, Wilma Lord Perkins, '18, scored a great personal success, and her husband, Dr. Dexter Perkins, as King of the Sewermen, added luster to the laurels he won for his memorable playing of Caesar in "Androcles and the Lion," the hit faculty play of a few seasons back.

Another of the madwomen roles was played by Merle Spurrier, while Roman Speegle won plaudits as a Paris gendarme. Others from the faculty and staff who had prominent parts were Professors Willson Coates, Martin Greenman and Allan Wendt, Charles Cole, '25, Charles R. Dalton, '20, and the Rev. William D. Geoghegan, college chaplain. Professor Robert Hopkins of the Institute of Optics was in charge of lighting, and Elsa Jordan directed dancing. Miss Lisa Rauschenbusch, dramatics coach, won high critical praise for her sensitive directing of the play, which with its whimsy and subtle humor, could easily have missed fire under less expert hands.

Excellent performances in leading roles also were



Dr. Dexter Perkins, who has delved into many muddied international waters in his historical studies is shown (left) in his role as King of the Sewer Men in the student-faculty Centennial play, "The Madwoman of Chaillot."

Below is his wife, Wilma Lord Perkins, '18, who had the title role, shown with Roman Speegle, swimming coach.



turned in by the many student members of the cast, and the entire production was a skillful blending of many elements.

—R—

Phi Beta Kappa Chapter Holds Series of Cutler Coffee Hours

Under the continued leadership of Caro Fitz-Simons Spencer, '27, president, and Dr. Willard R. Line, '12, vice-president, who were re-elected last June, the Iota Chapter of Phi Beta Kappa is again holding a popular series of Sunday afternoon coffee hours in Cutler Union.

Dr. Kathrine Koller, who with Dr. Howard Hanson was elected an honorary member of Phi Beta

Kappa last June, addressed the group on November 19. Dr. W. Alfred Noyes Jr., spoke on January 21. Further coffee hours are planned this spring.

New officers of the organization are Dr. Alfreda Hill, secretary, and Alice Peck Hess, '28. Other board members are Susan Vogt Bender and Ruth Goodman Rand, both '37; Frederick Miller Jr., '34, and Goodman A. Sarachan, '18.

Role of the University in Re-Arming Democracy

By Provost DONALD W. GILBERT

AMONG the nation's greatest sinews of war are its universities and colleges. In every war we have fought they have supplied the core of trained, imaginative and self-reliant leaders. As wars have become more and more mechanized and technological, the institutions of higher education have provided the research facilities from which have come new knowledge, techniques and implements. Their campuses have been taken over by military agencies for training purposes. Their staffs have been drafted for national service in many critical areas of war production, regulation, research and military service.

From them, too, have come year after year a new generation of young people keenly aware of their democratic liberties, devoted to a free society and morally prepared to preserve our western ideals of human dignity. The universities have prepared for peace as they have fought for victory.

Today, as always before, education is determined that the nation's defense shall have first priority on its human and physical resources. No educator would for a moment consider the selfish interest of any institution before that of his country. As patriots, moreover, the leaders of our universities and colleges must assume full responsibility for the role which higher education is permitted to fill in the nation's defense. They cannot stand aside silently while the fate of higher education is decided by military and governmental personnel. It is their sacred duty to see that an indispensable resource is wisely used.

Our conviction is axiomatic. We must not interrupt now or later an adequate flow of trained specialists from our class rooms and laboratories. To do this may be to invite national disaster. If we must fight a war, we cannot carry on to victory by throwing masses of manpower into battle but by applying science, technology and superior management to the enemy's defeat. In World War II, the fundamental sciences which made possible the atom bomb, radar, the photographic and reconnaissance equipment for night-flying, and proximity fuses, came largely from university laboratories. The men and women who produced the new knowledge were university-trained scientists, chemists, physicists, engineers, mathematicians, bacteri-

ologists, psychologists and others. They were often men and women in their twenties and early thirties. The same was true of those who administered our governmental agencies: economists, political scientists, statisticians, accountants, historians. It was true also of many of our outstanding military leaders. They were young men trained in our colleges and universities for leadership in doing an indispensable war-time job. Without their services, victory would have been longer delayed and much more expensive.

Consider a few names well-known at this University: Dr. Lee A. DuBridge, only 40 when called to M.I.T. to head up the famous Radiation Laboratory. Under him was 28-year-old Dr. Joseph B. Platt, now on leave from the department of physics to serve the Atomic Energy Commission. Professor Robert Marshak at 28, and other young physicists served at Oak Ridge or Los Alamos. In OPA at 42 was Professor William E. Dunkman and in the Special Audits Division of the Army Air Force, Lt. Col. (now Graduate Dean) Frank P. Smith, then 38. Among a more mature group at the very forefront of research for war were Professor W. Albert Noyes Jr., Professor Wallace O. Fenn, Professor Brian O'Brien and many other members of the University staff. Suppose at an earlier time the university training of these men had been stopped to enable them to put on a uniform and carry a bazooka.

Another principle upon which educators must insist is that after their training has been completed, all our youth who are physically and mentally equipped for some productive service shall be fitted into the national effort in ways which utilize their special training and abilities. This allocation of manpower should be directed by a civilian agency directly responsible to the President. We cannot depend upon the military agencies, including Selective Service, to perform this task. We cannot afford in this crisis to assign a specialist in tropical diseases to a post in Alaska nor to attach an expert in metallurgy to a paratrooper unit. Manpower is too scarce to misuse.

If these principles are sound, the so-called Conant Plan must stand discredited. As the reader will recall, President Conant of Harvard University has proposed

that all of the nation's young men upon attaining age 18, shall, without exception or deferment, be immediately inducted for two years of training and military service.

Under such a plan the nation would gain a relatively small number of trained fighting men (the equivalent of present freshmen and sophomore classes) but ultimately lose a large part of two generations of college-trained specialists. Let us waive the obvious and questionable implication of the Conant Plan, namely, that we must or could successfully confront the enemy in Europe and Asia with adequate masses of manpower in the immediate future. Rather, we must decide whether 100,000 to 200,000 young men out of approximately 1,000,000 in each age group will determine the military outcome as effectively if immediately inducted, trained and sent to the fighting front as if permitted to complete college level and graduate training before being allocated to national service.

It is true that manpower is scarce and that a three or three and one-half million man military force will be difficult to assemble. Whatever those difficulties, they can be surmounted by appropriate changes in the Selective Service law which will still permit the intellectually qualified youth, selected by a nationally applied aptitude test and regardless of financial ability, to serve the nation *after* receiving further training rather than *before*.

The proposals of the six scientific advisory committees to General Hershey and those of the Association of American Universities and the Association of Colleges and Universities of the State of New York all recognize the importance of ultimate national service for all young men. The first two, however, leave entirely to the military agencies the selection of those who will be inducted at once and those who will be permitted to complete a post-secondary school course in training. Left to the military also is the determination of the service which each shall perform.

Only the New York State Association proposal includes the creation of a top-level civilian manpower allocation agency responsible for insuring the most efficient use of our scarce and precious manpower resources. This plan alone flatly and without equivocation permits national service after completion of an educational program at the level for which a youth's intellectual capacity fits him.

Much has been said concerning the democratic methods with an indiscriminate immediate induction for military service of all our youth whatever their potential capacities may be. But democracy is not self-destructive. The common mold is a feature of totalitarianism, not democracy. Let our educational leaders stand to their principles and as long as discussion is possible, press for the preservation of technically trained manpower as the nation's first resource in its critical hour.

—R—

Program Sponsored on "Our Society in the Atomic Era"

AN outstanding public lecture program of interest to all UR alumni and alumnae in Rochester and vicinity will be presented by the University on February 16 and 23 on the central theme, "Our Society in the Atomic Era."

Four nationally-known speakers will take part in the series, which will combine the annual Cutler and Rosenberger lectures. The first two addresses will be given in Strong Auditorium, River Campus. William L. Laurence, famed science writer for the *New York Times*, who won the Pulitzer Prize in 1946 for his eye-witness account of the atom-bombing of Nagasaki and subsequent 10 articles on the development, production and significance of the atom bomb, will speak at 3 p.m. on February 16 on "The Atomic Era."

At 8 o'clock that evening, Sumner Pike, one of the

original members of the Atomic Energy Commission, who was acting chairman following the resignation of David Lilienthal and was reappointed a commissioner last November, will speak on "The Impact of the Atomic Era on the American Economic System."

Second part of the series will be held in Cutler Union on February 23. Dr. Quincy Wright, professor of international law at the University of Chicago, and Dr. Margaret Mead, one of the world's leading anthropologists and associate curator of the American Museum of Natural History, will be the speaker. Dr. Wright's lecture will be at 3 p.m. on "World Government and the American Constitution," and Dr. Mead's at 8 p.m. on "The Individual in the Atomic Era."

The lectures are free and no tickets are required.

Alumni Bequest Committee Brings Objectives Before Community

AFTER functioning quietly over a period of several months the alumni committee studying a program for encouraging bequests to the University brought its objectives before the community on January 30. Following a dinner meeting at the University Club for attorneys and bank trust officers, Co-chairmen Cornelius R. Wright, '09, and John W. Remington, '17, explained briefly the University's need for additional endowment funds and outlined the way in which bequests may be made to the university.

Bequests are sought particularly as additions to the General Endowment Fund from which the trustees may assign funds whenever and wherever most needed within the University. In addition, bequests are

sought for the endowment of specific colleges and schools within the university, for special purposes including scholarships and fellowships, additions to buildings, endowed chairs, research, and other projects.

In a specially-prepared booklet now being distributed, these needs are enumerated, estimates are given, and examples of past bequests and their use detailed. In order better to acquaint non-alumni with the University, several pages of concise facts concerning enrollment, services, and budget are included.

The result is a concisely-presented explanation of the University's operation, its specific needs, and its financial position, together with bequest examples.

—R—

"Centennial Ode" Recordings Available to Alumni, Alumnae

IN response to enthusiastic demand from alumni and alumnae, students, faculty and others, the University is making available to them Columbia recordings of the magnificent "Centennial Ode" with score by Dr. Howard Hanson and narrative by Dr. John R. Slater.

Performed by the Eastman-Rochester Symphony Orchestra and the Eastman School Chorus, with Leonard Treash as narrator and David Meyers, baritone soloist, the recording is of the highest quality. Made by Columbia Transcriptions, the records are "33" long-playing 12-inch size. They may be obtained from the University by filling out the order form below and mailing it to Mrs. Barbara Bullock, 15 Prince St., Rochester 3.

The cost is \$4.85 per record, plus mailing charges, or a total of \$5. They also may be purchased at the University book stores about March 1. Any profits from sale of the records will be turned over to the University's scholarship funds. Those who heard the "Ode" performed at the Centennial convocations need no urging to obtain the recording. It is more than a souvenir of the Centennial. It is ageless, and future generations will turn to it for its inspiring music and message. As a Rochester *Democrat and Chronicle* editorial described the composition, "it expresses in measured words and a dramatic, frequently impassioned score, an outlook and a perspective that have nothing to do with time.

"In a special sense this is a Rochester possession. No other university in the land could have furnished the composer, the script writer, the musicians to play the score and the chorus to sing it. The combined fruit is an honor to the University and its rich resources. Dr. Hanson has written one of his most noteworthy scores . . . It has freshness and color and drama. Many hearings would be needed to explore all the lights and shadows."

Only 1,000 of the records are available. Order yours now by filling out the following form:

.....
Enclosed is my (check) (money order) for \$.....
for record(s) of the "Centennial Ode."
Name
(please print)
School or college you attended
Your street address
City Zone No. State

(Mail completed order form to: Mrs. Barbara Bullock, 15 Prince St., Rochester 3, N.Y.)



Alumni and alumnae daughters in the Class of 1954 among the freshmen and transfer students entering the Women's College last fall are shown in this photo (seated, from left): Faith Wright, Pittsford; Elizabeth Bean, Arlington, Va.; Austine Dougherty, Rockaway Beach, N.Y.; (standing): Joan Alaimo, Adair Bartholomew, Patricia Matthews, Joanne Gates, all of Rochester; Mary Griscom, Somerville, N.J.; and Avadna Seward Coghill, Rochester.

10 Sons, 9 Daughters of Alumni, Alumnae Enter UR

AS is only to be expected, one of the best-looking and most intelligent groups among the freshmen at the Men's and Women's Colleges this year consists of sons and daughters of UR graduates.

This year, the number of such freshmen is quite a bit smaller than in past years, a direct illustration of cause and effect, for they are the children of the depression of the early '30's, when many families postponed having offspring until economic conditions improved.

At the River Campus, there are 10 sons of alumni or alumnae, just half as many as in last year's freshman class, and at the Prince Street Campus there are nine daughters of graduates, including two transfers with advanced standing.

The Women's College freshman group includes Elizabeth W. Bean of Arlington, Va., daughter of Dorothy Wile Bean, '23, and Louis H. Bean, '19; Austine Dougherty, step-daughter of Arthur R. Hutchinson, '20, Rockaway Beach, N. Y.; Joan Alaimo, daughter of Michaline Corsica Alaimo, '30; Adair Bartholomew, daughter of Donald Bartholomew, '23; Joanne Gates, daughter of Alfred Gates, '29; Patricia Matthews, daughter of

Adelaide Geraghty Matthews, '33, all of Rochester; and Faith Wright, daughter of Cynthia Gay Wright, '28, of Pittsford. Entering with advanced standing are Avadna Seward Coghill, who transferred from Michigan State College, daughter of Avadna Loomis Seward, '13, and Mary Griscom, of Somerville, N. J., daughter of Katharine Obourn Griscome, ESM, '28, who transferred to the Women's College from Eastman School.

Freshmen UR scions are William C. Anderson, Linwood, N. Y., son of Clare A. Anderson, '16; John A. Dietz of Rochester, son of Dr. Wallace W. Dietz, '24; Marland C. Gale, Staten Island, N. Y., son of F. Marland Gale, '22, and grandson of former Dean Arthur S. Gale, professor emeritus of mathematics; James Gordon, Rochester, son of Edwin A. Gordon, ex-'22; John C. Robinson, Tucson, Ariz., step-son of George W. Willis, '17; Paul Lyddon, Rochester, son of Paul W. Lyddon, '22; Edward Mehrhof, Highland Park, N. J., son of Thalia Gates Mehrhof, '18; John J. Saeli, Rochester, son of Francisca Barone Saeli, '18; and Richard H. Wendt, West Henrietta, son of Louise Gelli Wendt, '28.



Sons of UR graduates in this year's freshman class at the Men's College include the following (seated, from left): Paul Lyddon, John J. Saeli, of Rochester; Marland C. Gale, Staten Island, N.Y., and Richard H. Wendt, West Henrietta; (standing): William C. Anderson, Linwood, N.Y., and Edward G. Mehrof, Highland Park, N.J. Missing from the picture are John A. Dietz and James Gordon, of Rochester, and John C. Robinson, Tuscon, Ariz.

—R—

UR Operating Costs More Than Doubled in Past Five Years

NET cost of operating the University's educational and auxiliary services during the past fiscal year rose to \$12,339,261, as compared with a total of \$5,467,752 five years ago.

This was shown in the annual report of Raymond L. Thompson, vice-president and treasurer, for the 1949-50 year ended last June 30. The figures revealed that while annual expenses rose nearly \$7,000,000 over the amount spent five years ago, additions to the University's endowment funds have totaled only \$3,478,201 in the five-year period.

Non-recurring expenses for capital purposes amounting to \$1,191,688 brought total University costs for 1949-50 to \$13,530,950. These costs included the construction of the new Atomic Energy Project building and the cancer research wing at the Medical Center, financed by the Atomic Energy Commission and the U. S. Public Health Service, respectively, and the completion of the chemistry research wing of Lattimore Hall and the Psychiatric Clinic at Strong Memorial Hospital.

Net cost of conducting educational and auxiliary services for the year, \$12,339,261, was \$875,820 more than for the preceding year.

Sharply rising costs without comparable additions

to endowment confront the University with a serious financial problem, Thompson said, calling attention to "the necessity for securing additional income." The greatest need, he stated, is for gifts or bequests to endowment for unrestricted purposes.

The expenditures included \$3,030,543 for fundamental research supported in large part by the U. S. Government, New York State, foundations, and industry. This figure illustrates the great expansion of the University's research activities. Ten years ago the amount spent for these purposes was less than \$200,000.

Student tuition and fees paid only \$2,321,275, or 18.8 per cent of the total net expense of operating the University last year. Other income was as follows:

From endowment funds, \$2,478,257, or 20 per cent of the cost; from patients in Strong Memorial Hospital and from the operation of the Municipal Hospital for the City of Rochester, \$3,300,809, or 26.7 per cent; grants-in-aid and sponsored research, \$3,008,774, or 24.3 per cent; dormitories and dining facilities, \$555,554, or 4.5 per cent; auxiliary enterprises, such as the University bookstores, student unions and student activities, \$445,546, or 3.6 per cent; gifts, \$181,436, including \$43,434 contributed by alumni

and alumnae in their annual fund drive, or 1.5 per cent; miscellaneous sources, \$76,814, or .6 per cent.

Income from all these sources for the year aggregated \$12,368,490, exceeding expenditures by \$29,228. The gifts of \$181,436 balanced the budgets and provided this small margin of net income, Thompson's report states.

Against this slim margin is the prospect of greatly decreased income from tuition next year with the expectation that enrollment of both men and women students will decrease considerably as the national mobilization program progresses.

All income from the Medical School's endowment plus an appropriation of \$61,482 from unrestricted endowment fund income was used to meet the loss resulting from the combined operations of the School and Strong Memorial Hospital. The Hospital showed a deficit for the year of \$43,165, which was met by an appropriation from the University's unrestricted endowment fund income.

With all schools and departments operating near capacity throughout the year, total enrollment was 9,444, including attendance at the Summer Session. Of these 4,284 were full-time students, and 5,160

part-time or special students, principally in University School and in the preparatory department of the Eastman School of Music.

The University continues to hold fixed income investments of only the highest quality and the proportion of endowment funds invested in equity securities and in short-term maturities remained virtually stationary, Thompson's report stated. The rate of return from these investments was slightly over 4.25 per cent, and the market value of endowment assets, as of June 30, 1950, equalled 114 per cent of the book value. Investments were diversified as follows: Bonds, 44.1 per cent; preferred stocks, 15.6 per cent; common stocks, 32.9 per cent; real estate mortgages, .7 per cent; income-producing real estate, 1 per cent, and income-producing leaseholds, 5.7 per cent.

Copies of the annual President's and Treasurer's Reports for the 1949-50 fiscal year may be obtained on request from the office of Raymond L. Thompson, 15 Prince Street, Rochester 3, New York.

—R—

Chemistry Fellowships Established; Heuman Scholarships Awarded

Four major fellowships for advanced study have been provided to the Chemistry Department by the Camille and Henry Dreyfuss Foundation, Inc., and the Du Pont Company.

The Dreyfuss Foundation awarded a \$10,000 annual gift to be used for postdoctoral fellowships, of which three will be available during the 1951-52 academic year. Purpose of the Foundation is "to advance the science of chemistry, chemical engineering and related sciences as a means of improving human relations and circumstances throughout the world."

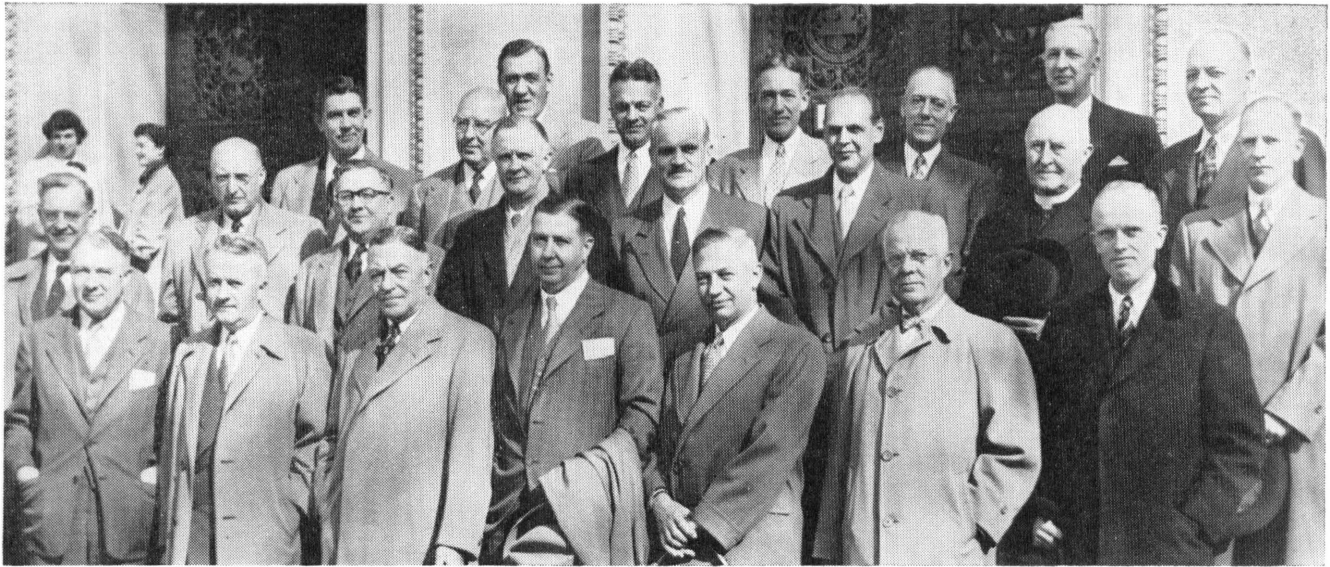
The Du Pont fellowship is for postgraduate study, and the recipient will be named some time this spring. It provides \$1,400 for a single person or \$2,100 for a married person, together with an award of \$1,200 to the University, for the next academic year.

First award of the new Sol Heuman Scholarships, which have a maximum value of \$600 a year each, recently was announced by the University. They were endowed by the late Sol Heuman, Rochester clothing manufacturer, who died in 1949. His will specified that income from the bequest was to be used for three

annual scholarships to be given to worthy recipients from each of the three faiths—Protestant, Jewish, and Roman Catholic. The first recipients are Theodore Schulman, of Kenmore, N. Y., a freshman at the Men's College; Robert H. Leahy of Elizabeth, N. J., second-year student at the Medical School, and Donald Johanos, of Cedar Rapids, Iowa, a graduate student at the Eastman School of Music.

Twenty graduate students are receiving training at the University under the Atomic Energy Commission's special fellowship program in radiological physics for the 1950-51 academic year. The field includes health physics, radiation monitoring and control, radioisotope measurements, hospital physics, etc., and the training centers at the Atomic Energy Project at the Medical School.

The 20 students selected to receive training at Rochester are graduates of 18 universities in many parts of the country. Radiological physicists are in demand not only for AEC plants and laboratories having health physics divisions, but also in schools, hospitals, and laboratories using radioisotopes.



This glittering array of heads of leading American universities met at the River Campus October 26-28, at the 51st annual meeting of the Association of American Universities: (front row, from left, all presidents unless otherwise noted): Virgil M. Hancher, State University of Iowa; J. Roscoe Miller, Northwestern University; Alexander G. Ruthven, University of Michigan; James R. Killian Jr., Massachusetts Institute of Technology; Lee A. DuBridge, California Institute of Technology; Raymond L. Thompson, vice-president, UR; A. Whitney Griswold, Yale University. Second row: Raymond B. Allen, University of Washington; Frederick A. Middlebush, University of Missouri; Paul H. Buck, provost, Harvard University; Colgate Whitehead Darden Jr., University of Virginia; Arthur H. Compton, chancellor, Washington University; Howard B. Jefferson, Clark University; Msgr. Patrick J. McCormick, Catholic University of America; Gordon Gray, University of North Carolina. Back row: Arthur H. Edens, Duke University; Henry Wriston, Brown University; J. E. Wallace Sterling, Stanford University; Robert M. Hutchins, chancellor, University of Chicago; Deane W. Malott, chancellor, University of Kansas; Detlev W. Bronk, Johns Hopkins University; Donald W. Gilbert, provost, UR; Harold E. Stassen, University of Pennsylvania.

Leaders of American Thought, Education Meet at University

ROCHESTER'S campus has been the mecca for scores of leaders of American thought and higher education this winter, drawn to the University by meetings and conferences of university administrators, scientists, scholars and writers.

Chancellor Robert M. Hutchins of the University of Chicago, Presidents J. Roscoe Miller of Northwestern; James R. Killian Jr., M.I.T.; A. Whitney Griswold, Yale; Gordon Gray, University of North Carolina; Harold E. Stassen, University of Pennsylvania; Detlev W. Bronk, of Johns Hopkins; Lee A. DuBridge, Cal. Tech, and Chancellor Arthur H. Compton, Washington University, all names to conjure with, were only a few of the dozens of university heads and Graduate School deans who gathered at the River Campus October 26-28 for the 51st annual meeting of the Association of American Universities and the Association of Graduate Schools.

Another assemblage of brilliant minds took place on December 16 when the University was host to nearly 100 of the nation's top men in the field of atomic energy at a national conference on high energy physics, including such famed personalities as Dr. J.

Robert Oppenheimer, wartime head of the atomic bomb project, Hideki Yukawa, leading Japanese physicist who received the Nobel Prize last year and recently was appointed professor of physics at Columbia University, Professors Hans Bethe of Cornell, Bruno Rossi of M.I.T., Eugene Booth of Columbia, Norman F. Ramsey of Harvard, and Donald P. Kerst, University of Illinois, inventor of the betatron, and Wolfgang K. H. Panofsky, University of California.

This conference, together with a program of visiting lecturers in physics, was initiated in large part by Joseph C. Wilson, '31, UR trustee and youthful Rochester industrial leader. The conference was made possible through funds contributed to the University's Physics Department by a group of Rochester industries, which also have underwritten the department's new visiting lecturers program, in which Professor Panofsky was the first speaker. It was arranged by Dr. Robert E. Marshak, chairman of the department and internationally known for his work in theoretical physics. The conference was the first of its kind in the United States made possible by non-government funds. It also marked the first reports on experiments

being carried out on the new high energy atom smashing machines at Columbia, Harvard, Illinois and Cornell.

Thirteen of the atomic scientists were guests of the University and some 80 others prominently engaged in the field of high energies produced by the large cyclotrons, betatrons, cosmotrons and other accelerators attended the meetings from all parts of the country.

In the field of the humanities, the English Department's third annual conference series brought distinguished authors, scholars and critics to the University on December 1 and 2 and again on February 9. The

general theme was the novel and its place in the culture of the past and present. At the opening session, James T. Farrell, author of "Studs Lonigan" and other novels and short stories, Dr. Mark Schorer, professor of English at the University of California, critic and short story writer, were the speakers on the respective subjects, "The Novelist as Reporter" and "The Novelist as Interpreter." Scheduled for the February 9 meeting were another well-known novelist, Katherine Anne Porter, William Tindall, professor of English at Columbia University, authority on James Joyce and the modern school, and Joseph Warren Beach, professor emeritus of the history of the novel, University of Minnesota.

—R—

Alumnae Career Clinics Aid Students in Selecting Life Work

"WHERE do we go from here?" How many of you as graduating seniors found yourselves asking that very question? Perhaps you were interested in law, in some type of social work, in teaching, or perhaps in advertising. These are varied fields, certainly, and they require far different types of preparation and far different kinds of interest in those who wish to enter them. It is an attempt to tell the undergraduate something of the field and of the types of work to be found in it that the alumnae sponsor a program of five or six career coffee hours each year.

At each of the coffee hours two or three related fields are discussed, and outstanding Rochester area women in those fields are asked to present the facts and figures to the undergraduates who attend. There have been three such meetings thus far this year. The first, on law and government, was held on October 10 with Cecile Genhart Dutcher, '46, and Rosemary Fay Loomis, '47, as the speakers. On November 13, Miss Catherine Meisenzahl spoke on medical social work and Miss Birdell Jackson on group social work. The third, on radio, advertising and journalism, was held on December 4 with Ann Houlihan Keefe, '46, and Mrs. Clara C. Lawler, from the women's department of the *Democrat and Chronicle*, as the speakers.

Invitations are sent to those students who are concentrating in subjects which might lead to work in these fields, and posters are placed in strategic spots about the campus.

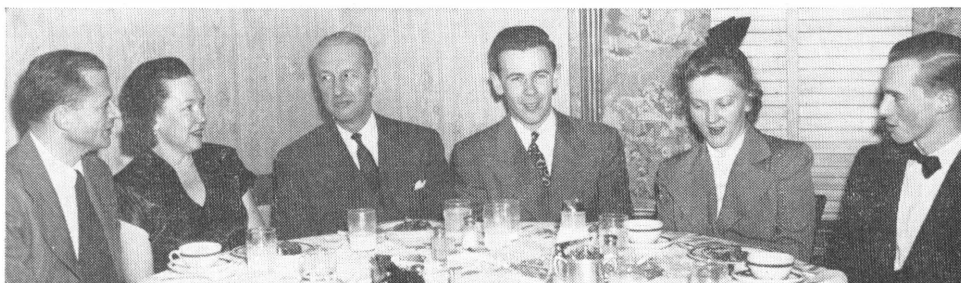
The coffee hours are made possible by a committee under the able co-chairmanship of Nancy Levy Cohen, '47, and Louise Gelli Wendt, '28. Special

thanks go to the women who give so freely of their time to address the groups and to Dr. Isabel K. Wallace, '16, whose original assistance in setting up the series this year and whose continued aid throughout has been invaluable.

Such a program is, in the minds of many alumnae, an indispensable part of their work as graduates of a college of liberal arts and sciences. They realize, perhaps more than anyone else, how important it is for the undergraduate to have some ideas regarding the fields of work which are open to them. Those who concentrate in science have a fairly clear picture of what they want to do, but those in the so-called "arts" fields have a far wider scope of opportunity and a far wider variety of careers to choose from. A liberal arts college aims to turn out a well-rounded individual and in these times of international strife, it is to be hoped, a humanistic one as well, but humanism is too general a thing to be anything other than a basic philosophy or point of view. When supplemented by the courses of special interest leading to work in specific fields it gives the individual the equipment to take her most active part in society.

It is the aim of the career coffee hours to aid the student in selecting her courses so they will prepare her for the field in which her primary interest lies and to tell her about those fields so that she may choose wisely on the basis of her own interest and abilities. Here the Alumnae Association is joining hands with the vocational counselor and the placement secretary of the College for Women to help the students fit themselves for the society in which they live.

REGIONAL ASSOCIATIONS



At the meeting of the Washington Alumni Association on November 30 which drew a record attendance (from left): Myron Glaser, association president; Mrs. Glaser, Provost Donald W. Gilbert, Alumni Secretary George McKelvey, Alumnae Secretary Jane Dibble, Frank J. Dowd Jr., counselor on admissions, Men's College.

Almost without exception the news from the alumni and alumnae regional groups is that of a series of successful meetings held in late November and early December.

Taking the University's Centennial Celebration as the theme, the program was identical for all meetings with only a change in speakers from one location to the next. In most instances the attendance exceeded both previous records and current expectations.

Attending alumni had the opportunity to catch up on Rochester news and developments from Provost Donald W. Gilbert, Dean J. Edward Hoffmeister, and Professor Glyndon G. Van Deusen. Charles R. Dalton and Frank Dowd spoke briefly on admissions problems and how they are being combatted. Jane Dibble and George McKelvey outlined the plans and current accomplishments of the Alumnae Association and the Associated Alumni. In each instance the meetings were closed with a showing of the centennial film, "A Century Toward Tomorrow."

NEW YORK

Members of the class of 1954 and new alumnae in the New York area were entertained at tea at the home of Denise Hirshfield, '48, in Pelham Manor in September by the New York Board of Directors. Guests from the class of '50 were Roberta Klein, Barbara Smith, Janet Price, Jean Poole, and Mary Lou Scanlon.

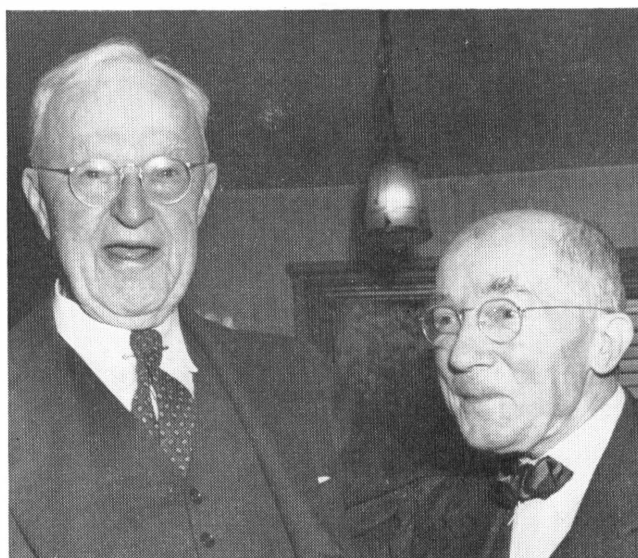
Marian Lucius, '32, showed colored slides of the University and took the guests via slides and delightful personal anecdotes over the route of her trip to Europe last spring.

The scholarship benefit party was held December 9 in Wanamaker's Club Rooms. Virginia Dwyer, '43, was chairman. Home parties were also held for this benefit.

Ruth Groves Garnish, '27, is chairman of the "sectional meetings committee" which is planning infor-

mal gatherings among the 500 alumnae dwelling in 165 towns in the New York area.

Other appointments for the chapter were: Alumnae Council Representative, Virginia Cole Schley, '42; Kay Miller Kreag, '29, alternate; nominating committee chairman, Helen Poffenberger Wilkens, '35; membership co-chairmen, Mary Kay Ault Morris, '45, and Jean Boleracki Liske, '49.



Among those who enjoyed the Washington meeting were George F. Bowerman, '92 (left) and Joseph M. Young, '01. Mr. Bowerman was librarian of the Washington Public Library from 1904 until his retirement a few years ago after President Roosevelt twice extended his tenure. Mr. Young is a veteran member of the Internal Revenue Bureau.

CHICAGO

The Chicago Alumnae Chapter, in an action to honor the memory of Mary Adams Bickel, '39, has voted to donate a sum of \$50 annually to the Dean's Fund for the next ten years, at which time the action may be renewed.

Mary E. Adams, an English major, graduated in

the class of 1939. She was a member of Iota Chapter, Phi Beta Kappa and a member of Alpha Sigma Sorority. After graduation she returned to her home in Cuba, N. Y., where she served for a time as associate editor of the Cuba Patriot, of which her father was publisher. In December, 1939, she became engaged to Edward E. Bickel, '39, and after her marriage moved to the Chicago area. She was very active in Alumnae affairs and was secretary of the Oak Park Branch of the Alumnae Association in 1942. Her death occurred in March, 1949.

—R—

Alumnae Association Charts Program Of Suppers, Musicales, Receptions

With the coming of the first of January the Alumnae Association turned its thoughts to the new year which was opened at the first board meeting of 1951 held in Cutler Union on January 9. Gertrude Broadwell Briggs, '27, played the piano at the close of the meeting and featured a group of selections by American composers including Howard Hanson, Jose Iturbi, and Herbert Inch.

This meeting was followed on January 23 by the Alumni-Alumnae Dinner. The next big event will be the Susan B. Anthony College Supper planned for February 13. Lillian Gilbraith whose story is told in "Cheaper by the Dozen" and "Bells on Their Toes" will be the guest speaker. April will be bonus month with two events scheduled: a special concert-ballet program at the Eastman and the Senior Reception to be held at the Art Gallery. A tour of homes and gardens is being planned for May and the usual class reunions at graduation time will complete the year's program in June.

Annual Christmas Buffet, Concert Attracts Alumnae to Cutler Union

IT WAS the "night before Christmas" spirit that prevailed when the doors of Cutler Union were opened for the annual Alumnae Christmas Buffet and Glee Club Concert on December 10. Festivity was the theme of the evening as some 230 alumnae and their guests lunched on turkey salad and mince tarts and then listened to the combined Glee Clubs of the College for Women and the College for Men in a special program of Christmas music.

The evening began at the heavily laden buffet table in Cutler dining room where pine branches and the soft glow of lighted candles carried out the holiday motif. Informal group singing of well-loved Christmas carols followed the supper and then the guests adjourned to Cutler Auditorium for the Glee Club Concert. The Women's Glee Club, directed by Dora Lee Ruth Clowes, and the Men's Glee Club, under the direction of Paul W. Allen, presented a program which included a collection of European carols, some American folk carols, and selections from Benjamin Britton's "A Ceremony of Carols." The auditorium, decorated by two Christmas trees lighted in blue, was filled to overflowing with alumnae, guests, and students.

Credit for such a very enjoyable evening goes to the co-chairmen of the affair: Della Allen Somers, '19, and Frances Barber Starr, '21, and to their assistants, Janet Bagley Williamson, '48; Phyllis Kroemer, '49; Lucille Butler Carroll, '44; Katherine Carroll Shady, '44; Cora Warrant, '11, and Helen Jane Ladd, '42.



Flattering attention is given to Norman M. Howden '30, *Democrat and Chronicle* writer, by three distinguished scientists at the national conference on high energy physics at the River Campus in December. Shown with him are (from left), Dr. Hideki Yukawa, Nobel Prize-winning Japanese physicist; Dr. Sidney W. Barnes, administrator of the UR's cyclotron laboratory, and Dr. Robert E. Marshak, chairman of the Physics Department. Howden received George Westinghouse Science Award of \$1,000 in December for the "best newspaper science writing of 1950."

1950 CENTURY CLUB

(Annual Givers of \$100 or more)

†Henry Strong '54
 James Watson '81
 Edward Gilmore '89
 Smith Sheldon '91
 Charles Hutchison '98
 George Gordon '99
 Herbert Weet '99
 Farley Withington '00
 Eugene Roeser '01
 Raymond D. Havens '02
 Ernest White '02
 William Love '03
 Frederick Wiedman '03
 Joseph R. Wilson '03
 Arthur Stewart '05
 Albert Bowen '06
 Martin Tiernan '06
 Herman Cohn '07
 Matthew Lawless '09
 Cornelius Wright '09
 E. Willard Dennis '10
 Harold Field '10
 William Levis '10
 Ernest Paviour '10
 Macdonald Newcomb '11
 A. J. Parkin '11
 George Smith '11
 Raymond N. Ball '13
 G. C. Ludolph '14
 Edwin Appel '16
 John Lanni '16
 John Remington '17
 Edwin H. Whitney '17
 James McGhee '19
 Frank D'Amanda '20
 Dwight Paul '20
 Wadsworth Sykes '20
 Ralph Gosnell '21
 James S. Schoff '21
 C. John Kuhn '22
 Charles L. Rumrill '22
 Donald Saunders '22
 G. Alfred Sproat '22
 Grandison Hoyt '24
 Anonymous '25
 E. Blakeney Gleason '25
 Vincent Fagan '26
 Felix Ottaviano '29
 Ernest Underwood '31
 Joseph C. Wilson '31
 Knight Thornton '32
 Arthur Ticknor '34
 William Lell '31 Med.
 Donald Grover '35 Med.

†In Memoriam

1950 ALUMNI ANNUAL GIVING FUND CONTRIBUTORS

Fund Manager, Amount, Number of Givers
 And Per Cent Contributing Shown by Classes

MEN'S COLLEGE		1895—Joseph Humphrey
\$100	1854	\$90 8 57%
	1	Pe er A. Blossom
†Henry Strong		Prof. Victor J. Chambers
	1881	*R. Andrew Hamilton
\$100	1	*Joseph Humphrey
James S. Watson		R. E. Rogers
	1883	Rev. Arthur H. Simpson
\$7	2	George W. VanIngen
Rev. T. Vassar Caulkins		Norman G. VanVoorhis
George L. Munn		1896—Thurlow Buxton
	1884	\$30 4 67%
\$5	1	Rev. Carl F. W. Betz
Dr. George A. Coe		Thurlow W. Buxton
	1885	George H. Leffler
\$50	1	Arthur L. Vedder
Joseph H. Hill		1897—Albert Stearns
	1886	\$116 9 60%
\$40	3	Arthur R. Anderson
Prof. Lewis E. Akeley		Cur is W. Barker
*Mitchell Bronk		Albert Gubelman
William M. Northrup		William L. Hutchinson
	1888	Herbert R. Lewis
\$5	1	Hon. Clarence MacGregor
Prof. Warren S. Gordis		Henry A. Smith
	1889—Kendall Castle	Albert H. Stearns
\$250	5	R. A. Witherspoon
Kendall Castle		1898—Ralph Webster
E. R. Gilmore		\$336 8 62%
John B. Howe		William Betz
Prof. Henry E. Lawrence		Edward F. Davison
George H. Parmelee		Clinton M. Flint
	1891—Smith Sheldon	Dr. William F. Frasch
\$165	4	Charles F. Hutchison
Charles Butler		Edwin O. Terrill
William A. Ferrin		Colonel Edward Vedder
Smith Sheldon		Ralph P. Webster
	1892—John S. Wright	1899—Herbert Weet
\$77	6	\$426 23 144%
Nelson T. Barrett		Rev. Brewster Adams
George F. Bowerman		Charles E. Adams
Dr. Irving E. Harris		Calvin P. Bascom
Montgomery E. Leary		Charles W. Coit
J. B. Warren		Arthur W. Collard
John S. Wright		A. F. Dillman
	1893	James B. Forbes
\$95	5	O. A. Gage
Clarence S. Bissell		E. G. Galusha
H. W. Clough		George C. Gordon
Hon. John Knight		Nelson Hanford
George R. Raynor		C. N. Jameson
*Horace Taylor		W. Martin Jones
	1894	Thomas P. McCarrick
\$82	5	Harry R. Moulthrop
Irving N. Depuy		Rev. Robert Pat erson
Emil Landsberg		Arthur Simmons
Rev. Willard S. Richardson		Charles C. Stone
Rev. Rufus M. Traver		Dr. Herbert Walker Taylor
Dr. Charles R. Witherspoon		William Tompkins
		Fred K. Townsend
		Clark J. Twinn
		Dr. Herbert S. Weet
		1900—Clinton Lyddon
		\$236 9 75%
		Edwin W. Fiske
		Alfred P. Fletcher
		Clinton R. Lyddon
		Walter G. Parkes
		A. M. Stewar
		George W. Stone
		Fred Stuerwald
		Lewis H. Weld
		Farley Withington

*Life Member

1950 ALUMNI ANNUAL GIVING FUND CONTRIBUTORS

Fund Manager, Amount, Number of Givers and Per Cent Contributing Shown by Classes

1901—Eugene Roeser
\$350 17 71%

Dr. Herbert R. Brown
Frederick W. Coit
William P. Cross
Floyd C. Fairbanks
Charles A. Higbie
G. A. Lawrence
Charles F. Macon
Frederick Morse
H. M. Ramsay
Eugene Roeser
Dean Lee Simpson
Rev. H. W. Vodra
Prof. C. W. Watkeys
Ray H. White
Rev. John Whiteman
Joseph M. Young
R. E. Zachert

1902—Ernest White
\$235 7 28%

D. Walter Brown
Bailey B. Burritt
Herbert W. Davison
Edward F. Feely
Raymond D. Havens
Dr. Charles W. Hennington
Ernest L. White

1903—Joseph R. Wilson
\$458 16 124%

†Sidney I. Adams
Robert J. Barker
I. Brooks Clark
Burlaw Hill
Frederick S. Holbrook
†Louis W. Howell
Herbert A. Lotee
Judge William F. Love
George Marble
Alfred Martins
Clyde Franklin Mason
†Hiram Sibley Shumacher
Azariah B. Sias
Arthur Tucker
Frederick Wiedman
Joseph R. Wilson

1904
\$50 2 22%

George H. Chadwick
George Fuller

1905
\$292 10 63%

Louis J. Bailey
Trafton M. Crandall
Raymond C. Keople
Avery M. Meech
Edward E. Morris
Arthur Raynsford
Arthur L. Stewart
Judge Marsh N. Taylor
Frederick Weik
Theodore A. Zornow

1906—Embry Macdowell
\$319.50 14 40%

Harry W. Bosworth
Col. Albert Bowen, Ret.
William C. Clark
Professor Edgar J. Fisher
William H. Higbie
Charles Holzwarth
Professor Howard W. Lyman
Jacque L. Meyers
Walter S. Meyers
Charles P. Oliver
Arthur Rathjen
Charles A. Simpson
Robert O. Saunders
Martin F. Tiernan

1907—George Sullivan
\$255 13 57%

Herman M. Cohn
Benjamin Goldstein
Ralph E. Harmon
Carl F. W. Kaelber
William E. Kinney
Floyd O. Reed
Harold O. Stewart
George T. Sullivan
Earl W. Taylor
Dr. Edgar G. Thomssen
Edgar F. Van Buskirk
Albert Vosburg
Nathaniel G. West

1908—Harold Akerly
\$209 19 79%

Harold Akerly
Arthur H. Allen
Roy D. Anthony
Prof. Ernest F. Barker
Hiram L. Barker
Edwin H. Brooks
Walter H. Cassebeer
Raymond Eddy
Dr. John D. Fowler
Arthur S. Hamilton
Curtis D. Hart
Charles D. Marsh
Charles E. Meulendyke
Samuel Porter
Dean T. Pryor
Professor Norman H. Stewart
Maurice A. Wilder
Harry C. Taylor
Rev. L. Foster Wood

1909—Cornelius Wright
\$705 30 92%

Sydney Alling
Carlton F. Bown
Harvard Castle
Kash R. Chase
Harold Crafts
Edgar M. Flint
Lemuel H. Foote
Raymond J. Fowler
Professor Albert W. Giles
E. Harry Gilman
Wilbur Graves
Herbert E. Hanford
William C. Hanford
S. Park Harman
Roy E. Hills
A. Barton Holcombe
Dr. Albert D. Kaiser
Dr. Jacob S. Kominz
Matthew Lawless
Fred Maecherlein
Harry A. May
Frank H. Mc Chesney
Charles H. Miller
G. W. Ramaker
Joseph J. Rosedale
Edmund P. Schermerhorn
Raymond A. Taylor
Walter L. Todd
Fred E. Van Vechten
Cornelius R. Wright

1910—E. Willard Dennis
\$785 23 92%

Hiram W. Barnes
Earl J. Bullis
Francis E. Cassidy
Edward W. Conklin
T. Arthur Connor
Frank S. Dana
E. Willard Dennis
Harold L. Field
Leopold Gucker
Corydon B. Ireland, Jr.
Raymond J. Kirchmaier
William H. Lewis
Donald M. Lewis
Raymond B. Lewis
Raymond McKinney
Ernest A. Paviour
Benjamin A. Ramaker
Ray Robinson

Israel Schoenberg
William F. Skuse
Louis J. Summerhays
*George Taylor

1911
Macdonald Newcomb
Harry Ruppert
\$1025 24 52%

Dr. Walter C. Allen
Dr. Hiram Amiral
Wilmot V. Castle
William J. Clancy
Dr. Walter D. Edwards
Rev. Harvey W. Funk
Dr. Ernest Little
Dr. Donald J. MacPherson
Macdonald G. Newcomb
Frank Osborne
Charles M. Otis
A. J. Parkin
Richard R. Powell
Harry Ruppert
Oscar F. Schaefer
George G. Smith
Hamlet A. Smyth
George W. Spaine
Edward W. Spry
Rev. Hugh Stewart
H. Carlisle Taylor
Kenneth C. Townson
Frederick L. Warner
Lester O. Wilder

1912—C. Storrs Barrows
\$320 19 66%

Samuel D. Adams
C. Storrs Barrows
Rev. Albert Bretschneider
Allen M. Brewer
William D. Conklin
Albert H. Covell
Dr. Harry M. Damon
Charles E. Dorkey
Oscar L. Kaiser
Harry N. Kenyon
Dr. Henry E. Marks
Coy A. Riggs
Milton K. Robinson
William A. Schell
Arthur L. Schoen
Arthur See
Charles F. Starr
Charles R. Stephens
Maj. Gen. Albert W. Waldron

1913—James M. Spinning
\$741 44 96%

Dr. Harold Alling
William M. Anderson
W. R. Austin
Howard E. Bacon
Raymond Ball
Anonymous
Dr. Paul W. Beaven
H. Dwight Bliss
Harry W. Bloss
Milton E. Bond
John Carey
E. Dana Caulkins
F. Teal Cox
Floyd W. Elliott
Joseph L. Ernst
Charles K. Eves
Hamilton J. Foulds
Azel Gay
Ellis Gay
Swayne P. Goodenough
J. Jenner Hennessy
Roy H. Hendrickson
Walter H. Hughes
Julius C. Kaelber
Carlyle Kennell
Henry F. Kurtz
Bayne C. Leet
Willis P. Martin
John L. Merrill
Edmund W. Moore
Jay Moskowitz
Leo P. Redding
Francis M. Skivington
Harold W. Soule
James M. Spinning

Dr. Arthur M. Stokes
Edward C. Straucher
Frederick Vossler
Franklin W. Wells
Floyd A. Wheeler
William C. Wolgast
Ivan R. Wood
W. Bert Woodams
W. Raymond Yorkey

1914—Richard Wellington
\$740 34 97%

Homer G. Anderson
Fred B. Arentz
Avery Ashdown
Halton Bly
William W. Bouton
Bryant J. Brooks
F. J. Buffington
J. Arthur Connors
Frederick J. Converse
Leo F. Dwyer
Raymond C. Fisher
Walter S. Forsyth
Carl Gilt
Louis Gottlieb
Colba F. Gucker
Clarence Heer
*Walter J. Helmkamp
J. L. Hilton, Jr.
N. David Hubbell
George F. Hutchison
Julius Kuhnert
Dr. Joseph A. Lazarus
Sidney P. LeBoutillier
Dr. Howard F. Lewis
George C. Ludolph
Alvin A. Miller
G. Kibby Munson
Dr. Ira M. Olsan
E. Potter Remington
Irvin J. Schoen
Lloyd D. Somers
Harold S. Swarthout
Richard L. Wellington
Dr. Mac Naughton Wilkinson

1915—Fred Ratcliffe
\$250 17 50%

Robert F. Barry
Gordon C. Baird
C. Willard Burt
Frederick M. Chesbro
Leslie E. Freeman
Charles Fuller
Dr. Gordon H. Gliddon
Dr. Anthony J. Guzzetta
Alfred A. Johns
Clement G. Lanni
Dr. Stewart Nash
Fred Ratcliffe
Robert E. Ross
Rudolph L. Schmidt
Harold Shantz
Horace G. Swan
C. Frederick Wolters

1916—Sidney Adsit
\$636.50 36 67%

Sidney C. Adsit
Earl Allen
Clare Anderson
Dr. John D. Anderson
Edwin J. Appel
Frederick W. Armbruster, Jr.
Walter R. Attridge
Joshua Bernhardt
Edward S. Cross
Kenneth H. Field
Nathaniel Gold
Isadore Goldstein
Ezra Hale
Col. Dale C. Hall
Charles H. Hawks, Jr.
Paul L. Hill
John A. Lanni
Dr. Martin B. Lehnen
Clarence T. Leighton
Lawrence C. Lovejoy
Walter E. Miller
Charles R. Mowris
C. Harold Munson
Dr. Norman Pfaff
Elton Punnett

*Life Member

†Deceased

1950 ALUMNI ANNUAL GIVING FUND CONTRIBUTORS

Fund Manager, Amount, Number of Givers and Per Cent Contributing Shown by Classes

Walter J. Schiebel
Jacob Schooler
J. Carl Schulz
Delno G. Sisson
Elmer K. Smith
Paul J. Smith
Dr. Herbert C. Soule
Lewis M. Sunderlin
John A. Turney
Osmond G. Wall
Herbert Williamson

J. Gerald Mc Lean
Dr. Isadore Messinger
Elmer B. Milliman
David W. Moody
George D. Newton
William C. O'Keefe
Otto M. Ostendorf
James H. Snyder
Arthur J. Stevens
Leo D. Welch

John F. Bush, Jr.
J. Frederick Colson
John M. Dodson
Dr. Maurice Davidson
Dr. Ralph A. Eckhardt
O. Roland Fleming
Marland Gale
Dr. Erwin L. Gienke
Frederick W. Haines
John T. Harbison
James D. Havens
Floyd F. Hovey
George H. Janes
Dr. Charles Kaufman
Richard H. Kerbs
Victor E. Kimmel
Dr. Karl A. Kream
C. John Kuhn
Paul Lyddon
Dr. James M. Markin
Oscar Marth
Donald E. Mason
J. H. Miller
Walter F. Mylacraire
Dr. Raymond Reuter
Charles L. Rumrill
Donald N. Saunders
Walter L. Schneck
Donald C. Silver
G. Alfred Sproat
John T. Sullivan
Angus M. Turner
Richard D. VandeCarr
Walter V. Wiard
John J. Zeeb

C. Grandison Hoyt
Dr. Le Moyne Copeland Kelly
William M. Lauman
Dr. P. Frederic Metildi
Dr. Saul Mores
Adrian J. O'Kane
John Palmos
Charles R. Salit
Anthony Septinelli
Clarence J. Stady
Edward W. Vick
Claude L. Wallace
Ernest D. Ward
Donald B. Warren
Myron R. White
Isadore Wilinsky
Donald L. Wood

1917—Howard Henderson
\$816 24 68%

Samuel Berger
Edwin D. Claudius
Albert F. Fisher
Howard J. Henderson
Earl C. Karker
William F. Holmes
Floyd S. Lear
Dr. Richard Leonardo
Dr. David Mendelson
Ellsworth Nichols
Harvey F. Remington, Jr.
John W. Remington
E. Dwight Salmon
Herman A. Sarachan
Frank G. Silvermail
Roy R. Snyder
Dr. Roland P. Soule
Raymond L. Thompson
Gerritt Weston
Rodney L. Williams
Russell B. Williams
George W. Willis
Edwin H. Witney
Wilbur G. Woodams

1920—M. Stuart Hyland
\$810 38 88%

William G. Arldige
Louis H. Bean
Monroe A. Blumenstiel
Trafton Boulls
Frederick O. Brooks
Bernard R. Brown
Herbert R. Childs
J. R. Cominsky
Otto W. Cook
Charles R. Dalton
F. J. D'Amanda
E. La Rue Ely
Franklin J. Enos
John T. Ferner
Herbert M. Gosnell
Milton Hallauer
Dr. Cecil B. Hert
Fox D. Holden
Arthur R. Hutchinson
M. Stuart Hyland
†T. R. Long
C. Irving Lusink
Luigi Mauro
Paul S. McFarland
Carlyle B. Newcomb
Dwight C. Paul
Robert Reilly
E. Baird Robinson
Dr. M. George Scheck
Dr. John C. Slater
David L. Steidlitz
C. Shelton Sullivan
Wadsworth C. Sykes
Alfred T. Veness
De Mille L. Wallace
Joseph H. Williams
Edward T. Winslow
Henry E. Wondergem

1918—Harold Cowles
\$433 32 65%

H. Emmett Brown
Dr. Kenneth I. Brown
William E. Brown
L. Ring Coleman
Harold E. Cowles
Verne G. Edgcumbe
David L. Ellerman
Charles L. Gillette
Ward L. Gerber
Harold F. Gosnell
Alfred P. Harmon
A. Gould Hatch
Henry W. Hays
Leonard H. Henderson
Frank K. Hummel
John J. Klein
Hugh D. Mac Intyre
Donald Marks
Fred E. Mc Kelvey
Louis E. Meinhardt
Arthur A. Melville
Harold J. Peet
H. Dean Quinby
Dwight L. Riegel
Harold W. Rauber
Henry M. Rogers
Goodman A. Sarachan
Dr. Clarence C. Stoughton
Earl B. Strouger
A. Seldon Thomas
Milton R. Whitmore
L. Wayne Woodard

1919
Paul Krag
Dwight Moody
\$397 19 76%

Col. Stephen E. Bullock
Bloss D. Chace
Dr. John Detoro
Lyle K. Doane
James A. Jackson
H. F. Jennings
Hon. Kenneth B. Keating
Paul S. Krag
James E. McGhee

1921—Basil Weston
\$716 33 76%

Dorland J. Allen
John W. Baybutt
Dr. Henry Bloom
Holmes Bloomer
Michael V. Brindisi
Harry R. Brightman
William H. Campbell
Richard P. Curtiss
R. Reed George
Donald Wood Gilbert
Ralph W. Gosnell
William E. Hawley
Charles Hedley
William C. Jennings
Nathaniel C. Kendrick
Professor Dwight E. Lee
Harold H. Levin
Paul A. McGhee
M. Hugh Merson
Lazear Murphy
Frederick W. Orr
H. DeWitt Reed
George F. Rugar
Ellwood H. Snider
James S. Schoff
E. P. Sickels
H. Easl Spencer
Earl A. Uebel
Dwight VandeVate
Basil Weston
William J. Youden
P. J. Alvin Zeller

1922—Floyd Hovey
\$847 38 79%

Joseph T. Adams
Rev. Herbert N. Baird
Raymond Bookout

1923—Hoyt Armstrong
\$356 37 49%

Ralph Allen
H. S. Armstrong
Nelson W. Barrett
Donald H. Bartholomew
Walter M. Bennett
Fred Bittner
Angelo Brindisi
Clayton H. Brown
William A. Burdick
George S. Carhart
T. Joseph Carney
J. Leslie Chilson
R. B. De Mallie
Newell A. Ferris
Alfred Gates
Willard M. Green
Eaton Hammond
Rev. Harry J. Kreider
Dr. Shimo Kuimjian
George A. Lang
Dr. Louis L. Lapi
Commander O. E. Loeser
Charles A. Morrison
Dr. Paul R. Noetling
Edward W. Olver
Thomas W. Oliver
Carl D. Ott
Lloyd C. Patchin
Edward M. Pickard
Kenneth B. Popp
Dr. Clarence Shepard
Sanford G. Slocum
Dr. William Sullivan
Raymond J. Walter
George Weber, Jr.
Harlow B. Wheeler
Ira M. Wilder

1924—C. Elihu Hedges
\$462.50 35 64%

Warren W. Allen
Harvey Edward Bennett
R. Mervyn Briggs
Dr. William Wallace Dietz
Leo Herbert East
William H. Ewell
Charles L. Fairman
Walter W. Fischer
J. Feehan Fitzpatrick
Dr. Nathan Francis
Myron Glaser
Francis E. Green
G. Dwight Greenfield
Merlin L. Groff
Elihu Hedges
Arnold Hecklen
Richard D. Hickox
Elmer J. Hoare

1925—Austin C. Tait
\$1220.50 62 83%

Dr. Jacob Abramow
Anthony J. Betten
Mercer Brugler
Charles W. Burgess
John G. Callaghan
George S. Coburn
Charles F. Cole
Dr. Jerome Cowen
Laurence O. De Voll
Daniel L. Dole
Henry Elferink
David Francis
Rufus E. Fulreader
Dr. R. A. Gallagher
Dr. Thomas Bond Garlick
William B. Gelb
Max Gideonse
E. Blakeney Gleason
James W. Gray
Edmund T. Grosselfinger
Ralph Hallauer
Harris B. Hammond
Herbert R. Hanson
Dr. Albert Hegnauer
Clarence J. Henry
*Arthur J. Herbert
Earl Hilfiker
Dr. John W. Jameson
Mitchell C. Jossem
Carl Lauterbach
Dr. George R. Lavine
Dr. Joseph Leone
J. Lloyd Lill
Dr. Robert F. Lewis
Carl W. Luther
Emmet E. Lynn
Albert H. Makin
Elliot Maynard
James A. McConnell
Ralph H. McCumber
Benedict Miller
Clarke W. O'Brien
Lawrence Ogden
Dr. George H. O'Kane
Dr. William J. O'Neil
Maurice B. Pendleton
E. William Place, Jr.
Frank A. Saunders
William P. Schulz
John G. Shaw
John K. Shuster
Harold H. Stone
Austin C. Tait
Walter T. Taylor
Frank C. Valenza
Eric C. Vance
Dr. Glynndon G. Van Deusen
Frederic Wellington
Claude T. Westburg
Valentine H. Zahn
Anonymous

1926—Fred Metzinger
\$375 29 44%

Dr. Benjamin H. Balsar
Phillip J. Barnes
Eugene G. Biel
Harry W. Cleveland
Le Roy Brown Conklin
Glen E. Curtis
Dr. H. Raymond Drysdale
Alexander D. Dunbar
Clyde H. Erwin
Vincent Fagan
Henry F. Foote

*Life Member

†Deceased

1950 ALUMNI ANNUAL GIVING FUND CONTRIBUTORS

Fund Manager, Amount, Number of Givers and Per Cent Contributing Shown by Classes

R. M. Gordon
Kenneth C. Hausauer
Rufus Hedges
James D. Hendryx
Charles W. Joyce
Philip M. Linfoot
Alfred T. Loeffler
Herbert Marth
William Mc Ouat
Frederick Metzinger
Louis M. Nourse
Wilbur W. O'Brien
Laurence O. Richens
Charles R. Rudolf
Norman Stevenson
Harold E. Truscott
William Uhlen
Judge G. Robert Witmer

1927—John Thorne
\$438 35 50%

Dr. Harold V. Ackert
Seymour Bernstein
Dr. Robert H. Cardew
James Crombie
Bernard H. Dollen
Justin J. Doyle
Paul Emerson
Ogden Fitzsimmons
Dr. Clifford D. Ford
Dr. Fred J. Fumia
J. Howard Garnish
Dr. Orrin Greenberg
Dr. Karl W. Gruppe
George T. Hart
Harry R. Henrickson
J. Lawrence Hill, Jr.
Ellison G. Hillengas
Walter Koch
Jacob Kokis
Gerald A. Lux
Malcolm Mc Bride
H. Sylvester Partridge
Watson C. Patte
Dr. Alexander Petrilli
Richard F. Roda
Abraham Schtulberg
Dr. John Shannon
Eric D. Sitzenstatter
E. Payson Smith
Anastase Statius
Walter H. Taylor
Palmer H. Teller
John W. Thorne
Rev. George H. Tolley
James S. Wishart

1928—Nicholas Brown
\$270.50 30 42%

Francis Abercrombie
Eugene G. Alhart
M. Selig Apperman
Wesley F. Ashman
Edward Rupert Becker
Nicholas Elmer Brown
Donald Robert Clark
David Walter Densmore
Paul C. Durkee
J. Donald Fewster
Kenneth C. Fisher
Donald A. Garman
Dr. Gerard Joseph Grassi
Charles H. Green
Willis Truman Jensen
Mark A. Kreag
Claude Kulp
Charles T. Lake
Edward P. Loeser
Lowell MacMillan
Rev. W. O. Macoskey
Howard Marshall Madden
Dr. Gordon Meade
Robert E. Platt
Dr. John L. Pulvino
Ralph E. Steele
Dr. A. J. Tattelbaum
Dr. Raymond L. Warn
W. Howard West
Dr. William M. Witherspoon

1929—Fred Zimmer
\$510.50 47 52%

Dr. Carl B. Alden
Dr. Wesley Ashton
Clark Baker
Gerald R. Barrett
Robert Walter Biccum
P. Austin Bleyler
Dr. Earl P. Bowerman
Meyer Braiman
Hubert Winslow Brown
George William Buchan
Elton John Burgett
John Deyo Chipp
Dr. Clark H. Dale
Harold Albert Decker
Dr. Raymond Warren De Snaat
Jacob B. DeWeerd
Edward Parke Doyle
Herbert A. Eby
Dr. David Eichen
Philip Emerson
Forest Alton Frasch
James Hamilton Galloway
Raymond N. Gupp
Richard Harley Hamil
Frank S. Haugh
W. K. Heydweiller
Earl John Howard
Kenneth Mullie Ingison
Matthew Anthony Jackson
Richard Carlisle Jackson
Thomas J. Jackson
Roy Joseph Lingg
F. Lamont Mc Nail
Lewis Michelsen
Dr. Felix Ottaviano
Allen H. Ottman
Warren Pierson
Lucius L. Powell
David P. Richardson
Bernard Schneider
William A. Smith
Leo J. Tanghe
Hugo F. Teute
Ernest C. Whitbeck, Jr.
Chester M. White
Frederick W. Zimmer
Theodore J. Zornow

1930—Norman Howden
\$361 38 45%

James K. Albright
Joseph T. Anderson
J. Willis Barrett
Isadore G. Berger
William F. Bristol
Dr. Matthew E. Fairbank
Dr. Alan M. Glover
Charles Gosnell
Paul R. Guggenheim
Robert M. Hennessy
Justin Herman
Norman Howden
Milton Jacobstein
Dr. Joseph J. Kaufman
Lester C. Kelley
Gilbert H. Kirby
Dr. John Kraai
Kenneth G. Kugler
Elmer Francis Lalonde
Saul C. Lapidus
Dr. Paul Lembeke
Gordon L. Matthews
Graham C. Mees
Gregg J. Merrell
Rev. Grant S. Miller
Herman J. Norton
Gifford P. Orwen
Gilbert J. Pedersen
Louis Rappaport
Charles L. Resler
Dr. Richard O. Roblin, Jr.
Angelo J. Syracuse
Rev. George E. Ulp
Bert Van Horn
Rev. Alfred B. Wangman
Dr. Fred H. Willkens
Leon Winans
Eugene G. Zacher, Jr.

1931—Peter Braal
\$619 53 61%

David M. Allyn
A. Ralph Barker
Eugene H. BeHage
Dr. Karl Burton Benkwith
Peter J. Braal
David B. Brady
Henry E. Brayer
Joseph Buff
William J. Burbridge
Robert S. Burrows
Maurice Cameros
Dr. John Clair Chamberlin
Arthur B. Clappell, Jr.
George W. Coomber
Lawrence L. Culliano
John E. Deming
Robert E. DeRight
Herbert Dietz
Dr. William G. H. Dobbs
Dr. Michael J. Gerbasi
Dr. Andrew J. Giambrone
Wilbur L. Hanks
Jack Harrison
Edwin W. Hart
Dr. F. Milton Hathaway
Dr. George P. Heckel
Dr. Alfred J. Henderson
Lt. Comdr. Henry A. Imus
Dr. Brownell Jamison
Dr. Lewis A. Klein
Herbert A. Lauterbach
Ralph H. Lewis
Dr. Neils G. Madsen
Dr. C. Hamilton Mehrhof
Irving L. Mix
Dr. Robert Moehlman
George R. Morley
Robert G. Oorr
Charles W. Pritchard
Joseph S. Rippey
Dr. Fred V. Rockwell
David S. Rubin
Lloyd A. Schermerhorn
Dr. George M. Suter
Milton Tattelbaum
Ernest J. Underwood
John G. Urbanik
Jack Weiner
Lot S. Wilder
Alan R. Wile
Joseph C. Wilson, II
George A. Wishart
Robert J. Zimmerman

1932—Albert Thomas
\$523.50 41 46%

Paul W. Aradine
Dr. Ralph A. Arnold
D. Thomas Atterbury
Dr. George F. Bantleon
George B. Beam
John O. Benz
Louis Briskin
Chester F. Burmaster
William R. Clarke
James W. Collins
Ruben A. Dankoff
Roy S. Dementint
Jerome E. Doyle
Edward W. Fisher, Jr.
Fred H. Gowen
Dr. Leigh S. Greenfield
J. Elwood Hart
Herbert Heesch
Kenneth Bevin Kellogg
Allen L. King
C. B. King
Frank H. Lines
John Martin
Michael Mavrides
Donald N. Mills
Joseph E. Morrissey
Fred R. Myers
Commander Carl Paul, Jr.
Melbourne J. Porter
Dr. Max H. Presberg
Frazier D. Punnett
Harold S. Rappoport
Phillip Reed
Julius Rock
Emmett J. Schnepf

Arthur W. Schwartz
Norman H. Selke
Albert Thomas
Dr. Herbert Thompson
Knight Thornton
Paul F. Valerio

1933—Lewis Schauman
\$508.50 61 62%

Arthur W. Allen
Wesley H. Bahler
Armin N. Bender
J. Nelson Bettner
Julius Bland
L. Gordon Booth
Dr. Samuel Brim
Elmer L. Brown
Ralph N. J. Brown
Donald Christie
Weld Conley
Mortimer Copeland
C. L. Darling
Joseph DiFede
Robert DuBois
William J. Eckert
Charles E. Erdle
J. Robert Fagan
Dr. Thomas R. Forbes
Richard Gardner
Dr. Charles Gay
Morris Hamburg
Willard E. Hardies
Charles Hendershot
Dr. Robert A. Hettig
Leland E. Hildreth
Willard W. Holbrook
Rev. Robert I. Howland
Hyman J. Kaplan
Dr. Max Kaplan
Allan E. Kappelman
Milton Karz
Harold A. Ketchum
Charles G. Kirby
Carl Lang
George Leader
George E. Leadley
Alden H. Livingston
G. Carroll Madden
Dr. Elias J. Margaretter
Dr. William J. Messinger
Dr. Robert Metzdorf
Oscar E. Minor
Howard B. Mouatt
Truman O. Murrell
Vernon H. Patterson
Charles A. Phillips, Jr.
Porter M. Ramsay
Dr. Francis C. Regan
Arnold Rubenfeld
Joseph Scarlett
Lewis E. Schauman
Arthur Schiller
Bernard P. Soehner
Eli Sokol
Theodore H. Solomon
Rev. Gilbert Swenson
John L. Tupper
John Walter
E. Biden Whitney
Caesar N. Youtchas

1934—Joseph Noble
\$681 72 73%

George H. Alexander
Dr. Herman S. Alpert
Nathaniel D. Arnot
Elton Atwater
C. McCrea Bader
William E. Beel
Judd H. Black
Homer J. Bliss
A. Bernard Blonsky
Ralph Boyink
Grover C. Bradstreet
Henry C. Brunner
Phillip L. Carey
Lewis D. Conta
Frederick Charles Cook
Dr. Whitney R. Cross
Milton F. Cummings
George Darling
Ward Clifton Davis
Richard A. Deane
Edward W. De Aoun

1950 ALUMNI ANNUAL GIVING FUND CONTRIBUTORS

Fund Manager, Amount, Number of Givers and Per Cent Contributing Shown by Classes

Anthony L. Dividio
 Charles H. Foster
 Dr. Charles M. Furthrer
 Wesley M. Grant
 Mack D. Griswold
 John Christopher Kendall
 Maurie F. King
 Hugh J. Knapp
 Rev. Robert L. Kress
 Dr. Karls F. Lagler
 Henry S. Marshall
 Lewis H. Mc Glashan
 Paul E. McNamara
 Karl H. Meng
 Francis W. Miller
 Frederick S. Miller, Jr.
 Francis Milligan
 Roland C. Moore
 Grantier L. Neville
 Robert C. Nixon
 Joseph L. Noble
 Paul E. Norton
 Jeremiah P. O'Connor
 William R. Orwen, Jr.
 J. Dewey Powers
 Leo H. Query
 Harold Rand
 Charles M. Reed
 John J. Reed
 Edward R. Renshaw
 Edward Rosenberg
 George G. Roth
 Eli Rudin
 Martin Salo
 Robert F. Schneider
 Dr. L. Gordon-Shepler
 Samuel C. Shoolman
 Benjamin T. Simmons
 Dr. Pincus Sobie
 Howard A. Splitt
 Howard A. Sprout
 Dr. Udell B. Stone
 Dr. Charles T. Sullivan
 Kenneth L. Tanager
 Louis J. Teall
 Arthur P. Ticknor
 Robert J. Trayhern
 Dr. Leonard Weisler
 Richard U. Wilson
 Dr. Russell Witherspoon, Jr.

1935—Gordon Waasdrop
\$782 81 70%

Arthur C. Austin
 Howard W. Bartlett
 James R. Benford
 David Berger
 William P. Blackmon
 J. Harper Bushfield
 J. Francis Canny
 Halsey S. Carey
 James P. Conti
 M. Sherman Cotton
 Charles S. Craig, Jr.
 Russell E. Craytor, Jr.
 Dr. Peter P. Dale
 Homer S. Davey
 E. Paul Dean
 Ira Sutphen Deyo
 John Francis Dobbins
 Neil H. Duffy
 John P. Erdle
 Robert J. Exter
 Joseph Farbo
 Donald B. Fischer
 Theodore E. Fitch
 Dr. John Paul Frazer
 George B. Gardner
 Henry E. Goebel
 Dr. John B. Goetsch
 Robert B. Gordon
 Tom Gorham
 Dr. David S. Grace
 David L. Gundry
 Irving Guttenberg
 Robert E. Harris, Jr.
 Dr. James C. Hart
 Howard H. Hennington
 Neil J. Hickey
 Charles E. Hilton
 H. Orlo Hoadley
 Allen E. Hurwood
 Franklyn C. Hutchings
 Eric B. Insley
 William Carroll Johnston
 Martin M. Josephs

Charles B. Kenyon
 Elwin Kneale
 George Lapham
 Paul K. Lemassena
 Lawrence F. Luescher
 Dr. Charles A. Manuele
 Donald E. McConville
 Rev. William H. Merwin
 Millard J. Noonan
 Mort Nusbaum
 Charles J. Parnell
 Dr. Charles E. Passage
 Dr. Abram Pinsky
 Dr. Ronald E. Prindle
 Dr. Ellis Ring
 Dr. Anthony F. Rizzo
 Alfred G. Scheible
 Irving Senzel
 Charles B. Skinner
 Jacque E. Sloan
 Richard W. Snow
 Raymond V. Spare
 Dr. Howard A. Spindler
 John A. Stahlbrodt
 Charles W. Sutton
 Lawrence E. Unger
 Charles E. Vaughn
 Gordon L. Waasdrop
 Dr. W. C. Walzer
 Robert F. Weller
 Raymond J. White
 Thomas B. White
 Ralph Wickins
 Rabbi Herbert J. Wilner
 Robert E. Witherspoon
 Sherry K. Wood
 William H. Zimmerli
 Charles G. Zutes

1936—William Lacey
\$485 63 45%

Carl Backus
 Rollin E. Baker
 John W. Bareham
 John H. Brinker, Jr.
 Charles N. Clark
 J. Fred Coake
 Roger Coakley
 Gordon A. Coleman
 Richard E. Contryman
 Joseph B. Cramer
 George C. Dick, Jr.
 Dr. Richard O. Edgerton
 Frank A. Ferrari
 John F. Flagg
 John Q. Flint
 Dr. Gilbert B. Forbes
 T. Paul Ford
 Dr. Henry H. Forsyth, Jr.
 Dr. Harold A. Friedman
 Donald A. Gaudion
 Lee Jay Geismar
 L. H. Goodhue
 Charles N. Griffiths
 Arthur W. Haas
 Everett P. Hall
 James Harper
 Dr. Rupert A. Havill
 Rev. Alanson Higbie
 W. Kenneth Hovey
 Richard J. Hughes
 Henry E. Ireland
 Robert M. Jacobs
 Curtis L. Kaufelt
 George J. Knapp
 Robert J. Kochenthal
 William F. Lacey
 Dr. Howard B. Leve
 Walter Litten
 Joseph LoCicero
 Henry G. Lyon
 Mortimer H. Maier
 Milton C. Matthews
 Donald MacDonald
 Stuart Meech
 John B. Munson
 Dr. W. B. Nixdorf
 Herbert A. Norton
 Dr. Michael Pulcino
 H. J. Putnam
 Lt. Col. C. J. Quilter
 Wilfred V. Robertson
 Howard F. Rogers
 Otto Schaefer
 Willard C. Smith
 Donald T. Street

Dr. W. George Swalbach
 Philip H. Tierney
 Dr. Herbert L. Tindall, Jr.
 J. Emmett Tune
 William O. Wagoner
 Dr. A. L. Whittemore, Jr.
 Maurice A. Wilder, Jr.
 Frederick A. Wright

1937—Robert Weingartner
\$698 77 57%

Robert V. Adair
 Russel J. Anderson
 George A. Bachers
 Donald R. Barber
 Joseph E. Barnes
 Benjamin J. Beach
 Dr. Robert J. Bloor
 W. Stanley Bloss
 Richard E. Border
 Dr. Ivan W. Brown, Jr.
 Dr. Frederick E. Bryart, Jr.
 Leonard C. Buyse
 George R. Clark
 John H. Craft, Jr.
 Charles T. Crandall
 W. B. Daly
 Konrad L. Engel
 Darwin G. Erdle, Jr.
 Cameron Estes
 Dr. Michael Ferraro
 Dr. Arthur F. Fisher
 Everett L. Gardner
 James S. Glasgow
 Morton S. Goldstein
 Robert J. Grabenstetter
 Dr. John H. Grossman
 Joseph T. Hochstein
 Abe A. Hollander
 Frank M. Jenner
 Elmer Keller
 Ralph A. Kelly
 Jack Kerridge
 Charles O. King
 Noel H. Kuhn
 Richard S. Lee
 Edward H. Leighton
 S. B. Licata
 Mortimer A. London
 Anthony Loria
 Robert Maher
 John E. Mason
 Alfred Maurer
 Donald S. Meech
 Garson Merimsky
 William H. Moll
 Domenic Morabito
 Neil C. Mulcoch
 Elmer W. Myers
 William S. Nordburg, Jr.
 Dr. Edward J. Palmer
 Dr. Edward M. Parkin
 Donald Pearlman
 Col. Frank S. Perego
 Harold C. Perry
 James W. Phillips
 Warren W. Phillips
 Joseph B. Platt
 Peter J. Prozeller, Jr.
 Alexander Rakus
 Dr. J. Shelton Reed
 Charles D. Robeson
 Eli Rock
 Dr. Charles O. Sahler
 Morris Schmidman
 Albert L. Scrantom
 Leo F. Simpson, Jr.
 Paul Smith
 Edward O. Stephany
 Samuel Stratton
 Leonard W. Swett
 Frank B. Tracy
 Arnold N. Wick
 James F. Walters
 E. H. Walworth, Jr.
 William H. Webb
 Robert F. Weingartner
 David L. Williams

1938—Philetus Chamberlain
\$464 60 54%

Dr. Frederick L. Agnew, Jr.
 Dr. John L. Alhart
 C. J. Aronson

Franklin O. Baer
 Dr. Felix J. Balonek
 Elmer E. Batzell
 Raymond L. Beeler
 Carl Behrnt
 Capt. William P. Buxton
 Joseph L. Caliri
 Scott Callister
 Philetus M. Chamberlain
 Chester C. Champion, Jr.
 Joseph Christ
 Edwin W. Cissel
 Jay R. Clark
 Leonard E. Cogger
 Robert E. Dickinson
 William F. Dolke, III
 Randall M. Du Bois
 Carl E. Eksten, Jr.
 Harwood R. Ellis
 Louis J. Fortmiller
 William B. Freer
 Albert Gilbert
 David Goldstein
 Edward R. Hendrickson
 Dr. William M. Jackson
 Robert Kaley
 Harold M. Kentner
 Morton S. Kircher
 John G. MacNaughton
 William L. Maier
 Reed H. McBain
 Charles K. McGurk
 Paul H. Menig
 Daniel Metzdorf
 Kenneth R. Miller
 Hugh S. Mosher
 Wilbur K. Neuman
 Everett L. Perry
 Harmon S. Potter
 Frederick I. Price
 Angelo J. Rallo
 Robert Rice
 Wylie S. Robson
 Frank Roney
 G. Robert Schermerhorn
 George H. Schreiner
 Edgar M. Shantz
 Dr. Fred Sherwood
 Nelson Spies
 Harold Steve
 Harmon V. Strong
 Major Clyde T. Sutton, Jr.
 Frank Taylor
 Robert B. Taylor
 Dr. Allan P. Turner
 Ross G. Weller
 Roy A. Wemett

1939—Donald McCowan
\$391 63 55%

Myron T. Bantrell
 Gordon D. Brady
 Orson J. Britton
 Keirn Brown
 Richard K. Burrell
 Dr. Robert W. Cordwell
 Gordon R. Crauer
 Dr. Sheldon G. Edgerton
 Dr. Victor R. Ells
 Walter D. Erskine
 John C. Evans
 Morton W. Finch
 Bernard L. Frawley
 Max Geldin
 Myron W. Green
 Richard C. Hendrickson
 Richard E. Herbrand
 Kenneth J. Hoesterey
 Dr. Robert E. Hopkins
 Vere E. Howard
 Robert J. Hudak
 Dr. Robert L. Hull
 Robert M. Jackson
 A. David Kaiser, Jr.
 William J. Kennedy
 Joseph Kline
 Dr. Jacob Koomen, Jr.
 John Robert Ladd
 G. Prescott Lane
 Dean H. Lapp
 Robert Larson
 William L. Madden
 Donald D. McCowan, Jr.
 Lansing W. McDowell
 William R. McEnroe
 Peter G. Meade

1950 ALUMNI ANNUAL GIVING FUND CONTRIBUTORS

Fund Manager, Amount, Number of Givers and Per Cent Contributing Shown by Classes

Allan F. Mock
Theodore J. Neubert
Arthur E. Neumer
C. Burton Newman
Herman C. Nowack, Jr.
Frederick A. Nuessle
Carroll W. Potter
Neil T. Regan
G. Earl Rich
Edward S. Roat
Robert W. Rugg
Herbert Scheuer
Paul H. Schubmehl
Sherry C. Simmons
Craig M. Smith
Walter C. Stugis
Donald J. Sullivan
William Summerhays
Leo Summermatter
Raymond A. Taylor
Norman J. Timmons
Earl J. Van Lare
Robert L. Wells
H. Elwood White
Walter Williams
Fred L. Witt
Harvey A. Wolff

1940
Robert Tucker
Robert Paviour

\$365.50 49 43%

L. Franklin Alderman
Dr. David W. Alling
August J. Bardo, Jr.
Robert L. Barrus
Myron Bernhardt
Allen M. Brewer
Norman R. Cole
Robert Dahler
Rodger E. Davis
V. Ethan Davis
S. Samuel DePalma
Dr. Ray Dern
Dr. Frank P. DiMarsico
Richard M. Drake
Dr. Robert F. Edgerton
Richard W. Gysel
David C. Harper
William E. Hawley
William J. Hoot
Dr. Ralph H. Kellogg
David Kelsey
Hamilton H. Mabre
William A. MacDonald
Alan H. Martin
Dr. Frederick J. Martin
Albert A. Mattera
James E. Minges
Edward J. Nagy
Reginald Oliver
Norman Parkhill
Walter C. Paul
Robert F. Paviour
Charles C. Perry
Donald Phillips
Dr. Harry S. Phillips
J. Douglas Sinclair
William T. Sherwood
Donald L. Smith
Harold J. Stiles, Jr.
Paul Suter
Sherwin H. Terry
Robert Tucker
Dr. Charles T. Tuke
J. Donald Urquhart
Frederick R. Waingrow
John L. Wehle
J. Wescott Wright
Wilbur H. Wright
Raymond W. Yaw

1941—**Guy Bondi**

\$264 45 39%

Mortimer L. Alderman
Guy Bondi
Kenneth B. Bowen
James F. Bradely
L. M. Brechbuhl
John A. Buyck
Dr. Charles W. Caccamise, Jr.
Emerson Chapin
Richard Conyne

Fordyce V. Cowing
Roger E. Drexel
Roger W. Erskine
Edward Flint, Jr.
Ivin R. Forman
Dr. Thomas Frawley
Dr. John Richard Geary
Harry J. Hart
William B. Harison
L. J. E. Hofer
Michael A. Insalaco
William Junker
James Keighley
Richard T. Kennedy
Sumner P. Lapp
Nicholas Marchese
Thomas McCleary
George C. Monroe, Jr.
George M. Mullen
Fred Newhall, Jr.
W. B. Munson
Wayne Norton
Robert H. Riggs
Dr. Robert R. Rothfus
Benjamin Shimberg
Dr. William H. Smith
Richard W. Spears
Frederick W. Steul
Peter Stranges
Arthur W. Taff
William H. Tew
Dr. Richard E. Walker
Willard A. West
Dr. John R. Williams
Frederick J. Wolff, Jr.
Richard S. Woods

1942—**Frank Phillips**

\$241.60 46 41%

Alexander D. Angelidis
George A. Agoston
Edmund J. Baas, Jr.
Robert W. Barker
Alfred D. Becker
Donald R. Behrens
Floyd E. Bliven, Jr.
Dr. Franklin T. Brayer
James H. Brown, Jr.
William Bruckel
Charles F. Coit
George Darcy
Douglas L. Emond
James G. Englert
William L. Ginkel
Robert William Gribben
Robert S. Gurney
Douglas F. Jones
Alvin D. Keene
Robert W. King
Wilbur Kirchgessner
Dr. William B. Mason
Walter J. Moore
Robert M. Murphy
John M. Newell
John L. O'Brien
Robert F. O'Brien
Frank A. Okey
Theodore H. Peck
Frank Phillips
Dr. Charles F. Post
Philip Price
Charles C. Ransom
William T. Rudman
Robert P. Smith
Malcolm D. Strong
James B. Terry
Victor P. Totah
John P. Vaeth
Edward L. Valentine
H. Corbin Van Cott
David D. Van Horn
Robert Weinberg
John C. Wellington
Richard J. Wilson
Robert A. Woods

1943—**Otto Layer**

\$294.75 57 56%

Dr. George H. Allison
Clarence E. Avery, Jr.
Dr. D. S. Baldwin
Victor M. Becker

Harry Barrett
Stuart B. Bolger
Severn P. Brown
Lowell T. Burke
Edward H. Clark
Richard N. Close
Robert W. Coyle
John E. Cranch
Richard E. Fang
John F. Faulkner
Robert J. Feeney
Donald A. Forsyth
Robert W. Gurnee
Lawrence C. Harris
Arthur M. Holtzman
Robert B. Houck
Dr. Clare W. Johnson
Francis M. Kelly, Jr.
Dr. Robert E. Kennedy
Gordon Kester
Richard Kramer
Warren Kunz
Dr. Herbert Lautz
Otto Layer
Walter H. May
Gerald D. Meyer
Elwyn M. Montfort
Thomas B. Mooney
John F. Murphy
Thomas C. Murray
Dr. Donald A. Norris
Dr. Robert Pekarsky
Robert H. Plass
William J. Raab
George Rentoumis
David D. Robinson
Jack H. Rutz
William J. Scheerens
Robert J. Schier
Edward R. Schongalla
Richard B. Secrest
Eugene T. Skelly
Howard W. Smith
Rodney T. Swain
John W. Tarbox
Lt. Norman C. Thomas
Dr. George Charles Trombetta
Douglas R. Vair
Mario Ventura
Robert H. Weiser
William A. Wheeler
Harry C. Wiersdorfer
James L. Wood

1944—**John Handy**

\$500 89 58%

Mark E. Amdursky
Ralph Ameele
Howard E. Bacon
John E. Barber
David W. Bareis
James R. Beall
Charles A. Bergerson
William L. Brice
James W. Brown
Robert E. Brunner
Dr. William C. Caccamise
Daniel Campbell
William J. Carnahan, Jr.
Robert B. Carson
Arthur B. Chapin
Carlos A. Chapman, Jr.
John B. Cherry
Franklin Clapper
Carl J. Claus
Donald Clough
Dr. James Monroe Cole
Richard T. Cook
Donald N. Curtis
Dr. Albert O. Daniels
Patrick J. De Cillis
Peter J. Drago
Richard F. Eisenberg
Dr. Wallace Font
Dr. William B. Forsyth
Jacob Gair
Jacob Gaudino
William Gavett
Jerome J. Gillette
Alfred Ginkel
Robert C. Gray
Richard R. Haig
Dr. Frederick J. Halik
Dr. John G. Hamilton
John W. Handy

Warren T. Heard
Robert Hoe
Jack Keil
Jack W. Kennedy
G. Edwin Kindig
Dr. John A. King
Dr. Donald R. Koerner
Richard F. Kruger
August A. Kuhn
Cyril O. Langlois, Jr.
Jack W. Leet
Eric Linhof
Joe Lipper
†Ormin Livermore
Jerold S. Marks
Robert E. Marks
Edward L. Matthews
Gordon C. McCowan
Donald B. Miller
James J. Murphy
Adin Allen Nellis, Jr.
Donald E. Newnham
Victor A. Noel, Jr.
William R. Nolan
Dr. Richard J. Nowak
Dean H. Parker
John G. Phillips
Leland Rayson
James Foster Rex
Mark R. Rosenzweig
Richard C. Saunders
John F. Schnacky
Irving Siller
John W. Simpson
Dr. F. Miles Skultety
Warren J. Smith
Raymond E. Speth
Gardner Stacy, Jr.
Joseph F. Stauffer
William D. Stewart
Charles W. Taylor
Dr. A. Harold Tishkoff
Jack Tishkoff
Maurice L. Townsend
Arthur Underwood
Donald G. Warner
Frederick A. Wiedman
Herbert C. Williamson
Samuel S. Young, Jr.
Stanley Zolnier

1945—**Robert Koch**

\$182 28 23%

Dr. Irving J. Baybutt
James Beach
William R. Boyle
Vernon A. Breitenbach
Jerald Bullock
John Robert Conway
John R. Corcoran
William L. Engan
Alfred Feinman
David T. Fitzelle
Dr. Edward D. Fuoco
Robert Koch
Dr. Ralph R. Lobene
Anthony Malgieri
Dr. Edward A. Mason
Alexander L. Mazzia
Richard G. Parker
Wallace L. Pensgen
C. D. Rambert
James P. Rizzo
†Norbert Schulz
Henry C. Senke
Walter P. Siegmund
Richard B. Smith
William F. Smith
Herman H. J. Stoll
Peter Togailas
Hendrick C. Van Ness

1946—**Myron DeWolf**

\$203.50 41 28%

Earl A. Abel
Dr. Frank Allen
H. Curtis Barber
Howard Beatty
Gorman L. D. Burnett
Earl S. Christman, Jr.
Joseph M. Culotta
Robert E. Curtis
Horace Denton

†Deceased

1950 ALUMNI ANNUAL GIVING FUND CONTRIBUTORS

Fund Manager, Amount, Number of Givers and Per Cent Contributing Shown by Classes

Myron F. DeWolf
Thomas Dinsmore
Albert J. Elias
Frank A. Faulkner
Dr. Seymour Friedman
Gordon S. Fyfe
Henry H. Gage
Dwight E. Gardner
Dr. Donald Gaylor
Dr. Donald Hasset
James T. Henderson
Frederick H. Hoffman
Floyd Inda
Robert R. Jones
John W. Krosse
Bruce M. Lansdale
John H. McKeenan
Robert A. Meyer
John E. Morris
Dr. William O. Robertson
Roy C. Ryen
Hugh F. Schaefer
Charles G. Schoenherr
Sidney O. Shashinka
James G. Sloman
David M. Smith
John D. States
Mark E. Steidlitz
Lincoln D. Stoughton
Dura W. Sweeney
Dr. James A. Sylvester
Dr. R. M. Tilly, Jr.

1947—Jack Dunlap
\$180 38 14%

Francis J. Alberts
William A. Alexander
Arthur G. Bailey
Joseph E. Bare, Jr.
David C. Barton
Robert D. Billett
Edward Dowling
Warren Duerr
Everett L. Dunbar
Robert Eastman
Karl W. Engstrom
Lt. J. G. Michael Esposito
Vincent Fantauzzo
Robert W. Forrester
A. R. Frackenpohl
Joshua N. Goldberg
Peter Gleason
Charles Harrington
George F. Harris
Warren M. Haussler
James R. Hays
Robert E. Heilbrunn
Stephen Jones
Thomas A. Keenan
James Kinney
Peter R. Lyman
Joseph G. Mack
Noel T. Maxson
Charles F. Moreland, Jr.
Donald S. Nash
Nicholas T. Parente
John S. Phillipson
Martin S. Reider
Karl F. Schoch
Franklyn H. Taylor
Dr. Bruce L. Till
Warren Gerald Urlaub
Laurence Young

1948—Donald Fisher
\$399.11 67 30%

Burton G. Andreas
James K. Avery
Graydon Bailey
*Thomas W. Barry
*Glenn C. Bassett
Marcus Battle
*Neal S. Bellos
Paul M. Benham
*Curtis J. Berger
*Richard Bowlan
Robert L. Brent
George A. Brown
Arthur Lloyd Bunn
Robert E. Cook
Robert A. Corbitt
*Robert D. Cowing
*William Coyne
Robert Currie, Jr.

Harold L. Dillenbeck
*William L. Doerr
*Frank J. Dowd, Jr.
James Ernest DuBois
Robert Paul Fedder
Donald Castle Fisher
*George M. Gelsner, Jr.
David C. Gilkeson
*David Thomas Gleason
Peter Lyall Gucker
David A. Haller, Jr.
*George G. Hart
*Arnold G. Hebb, Jr.
Joseph D. Helwig
John Richard Hoff
John Janos Hoffman
C. David Hollenbeck
John D. Hopkins
Walton Livingston Howes
*Norman Levin
*Donald P. Lincoln
*Anthony Liotta
Henry Andrus Martin
Weston McKane
Robert E. Moore
*Gene Moscaret
Edward John O'Grady
*Jack O'Neill
*Philip F. Peterson
Sheldon Phillips
*Robert Rosenthal
H. William Saffran
Donald Sand
Ross C. Scott, Jr.
Raymond T. Shafer, Jr.
Theodore Sippel
Donald K. Smith
*James Louis Stafford, Jr.
Richard Dale Sweigart
Ralph D. Tanz
John J. VanRosendael
Vance B. Van Alstyne
David Whalen
*George Edward Whitwell
James B. Williams
*Peter Michael Woodams
Walter E. Woods
William W. Young
Roger W. Zaenglein
*Insurance Policy Holders, Class of '48 Gift Fund

1949
Harry Nickles
Richard Scott
\$223.52 68 22%

Hugh S. Adams
Andrew N. Baker, Jr.
Zygmund Bara
Lewis V. Barker
William H. Beach
Leonard G. Bein
J. R. Brady
Robert J. Branigan
John W. Cannard
Warren S. Clapp
Saul Z. Cohen
Donald P. Dise
John W. Donnan
Thomas E. Doughty
William C. Douglass, Jr.
Robert J. DuPlessis
Robert H. Eisenberg
Paul J. Elsenheimer
Robert John Ferris
Joseph W. Fisher
Wallace Forman
Alfred J. Freeman
Jay Marc Friedman
Dwight E. Gardner
Howard F. Hoestery
Howard William Jennings
John H. Krieger
Leo John Krolak
Carl F. Leavens
Bruce LeMessurier
Austin R. Leve
Joe Liska
Martin E. Messinger
Robert Miles
John W. Mills
Samuel P. Moore
Paul J. Mutter
Perry H. Myers
Robert Neel

Angelo G. Nicchitta
Harry R. Nickles
Frederick C. Ostendorf
Pvt. James Pelton
Robert Pollard
Charlton I. Prince
Edward M. Rex
Samuel Rolick
Charles E. Rowley
William B. J. Sabey
Daniel B. Sass
Bernard J. Schnacky
Richard C. Scott
Richard T. Stern
Donald B. Tatlock
Steven F. Terris
Donald Terry
George S. Terry, Jr.
Lawrence A. Van Dam
Robert E. Veigel
Robert Wakefield
Richard Wallace
Robert J. Weiss
Charles E. Wheten
Grosvenor S. Wich
Roger Williamson
Paul Wittig
Theodore Richard Young
Hans Zweig

SPECIAL GIFTS
Quilting Club \$250.00
Senior Class \$539.86
Edward Sabel, non-alumnus
\$5.00

MEDICAL SCHOOL ALUMNI SCHOLARSHIP AND LOAN FUND

Total \$3,610 from 344

\$228.50 1929 8

Dr. Jerome Cowen
Dr. Jacob D. Goldstein
Dr. Florence S. Hassett
Dr. A. R. Hillman
Dr. Joseph Leone
Dr. P. F. Metildi
Dr. Donald D. Posson
†Dr. Doran Stephens

\$162.50 1930 7

Dr. Harold C. Carpenter
Dr. Karl W. Gruppe
Dr. Einar Lie
Dr. Donald Martin
Dr. Thomas R. Nichols
Dr. Luther W. F. Oehlbeck
Dr. John M. Scott

\$248.50 1931 9

Dr. Fred B. Davies
Dr. Girard Grassi
Dr. William A. Lell
Dr. Edward B. Nugent
Dr. Moses S. Shiling
Dr. Robert J. Thomas
Dr. Herbert F. VanEpps
Dr. Willard VanGraafeiland
Dr. Raymond L. Warn

\$162 1932 7

Dr. Bernard S. Epstein
Dr. Paul A. Ferrara
Dr. Louis A. Goldstein
Dr. Donald R. Inslay
Dr. John A. Lichty, Jr.
Dr. Anthony J. Morreale
Dr. A. J. Tatelbaum

\$208.50 1933 12

Dr. Carl B. Alden
Dr. Rudolph Angell
Dr. Earl P. Bowerman
Dr. Peter Cohen
Dr. William M. Davidson
Dr. David I. Fertig
Dr. John Kraai
Dr. Chester H. Lauterbach
Dr. Alexander Petrilli
Dr. John R. Phillips
Dr. Abou D. Pollack
Dr. Russell E. Sangston

\$388 1934 22

Dr. Sidney Beck
Dr. Karl B. Benkwith
Dr. George D. Brown
Dr. George Dacks
Dr. Elbert Dalton
Dr. William G. Dobbs
Dr. William Duesselmann
Dr. Percival A. Duff
Dr. Forest Mansel Dunn
Dr. Harry S. Good
Dr. George P. Heckel
Dr. Michael J. Lepore
Dr. Lewis Klein
Dr. Earle B. Mahoney
Dr. C. Hamilton Mehrhof
Dr. Frank Meola
Dr. Lawrence J. Radice
Dr. George M. Suter
Dr. Philip Wasserman
Dr. John S. Wolff, Jr.
Dr. Frank Wood
Dr. Ralph C. Yeaw

\$373.50 1935 20

Dr. Donald W. Bovet
Dr. S. Calthrop Bump
Dr. Francis B. Carroll
Dr. James F. Conner
Dr. Norman Egel
Dr. Matthew E. Fairbanks
Dr. John Paul Frazer
Dr. Edson H. Fuller
Dr. Michael J. Gerbasi
Dr. David S. Grice
Dr. Donald S. Grover
Dr. Arthur E. Martin
Dr. Gordon Meade
Dr. Stanley B. Peters
Dr. Barney Puglisi
Dr. Paul E. Rekers
Dr. Richard H. Sloan
Dr. Robert I. Walter
Dr. John R. Williams, Jr.
Dr. John H. Zimmerman

\$268 1936 20

Dr. Ralph W. Alexander
Dr. Achsa M. Bean
Dr. Robert A. Burns
Dr. Lynn R. Callin
Dr. William L. Dorr
Dr. Sidney Feyder
Dr. Dudley B. Fitz-Gerald
Dr. Charles F. Gay
Dr. Andrew M. Henderson
Dr. Donald H. Kariher
Dr. John W. Karr
Dr. Chris P. Katsampes
Dr. Charles H. Kosmaler
Dr. S. Arthur Localio
Dr. Edwin J. Medden
Dr. Allen A. Parry
Dr. Max H. Presberg
Dr. Julius Rock
Dr. Fred V. Rockwell
Dr. Lewis J. Schloss

\$142 1937 12

Dr. George F. Bantleon
Dr. Joseph K. Bradford
Dr. Arthur S. Coriale
Dr. Proctor P. Disbro
Dr. Carl Goetsch
Dr. David M. Keedy
Dr. John A. Olivett
Dr. George N. Pratt Jr.
Dr. Monroe J. Romansky
Dr. Roland E. Stevens
Dr. Joseph I. Thaler
Dr. Stanley W. Widger

1950 ALUMNI ANNUAL GIVING FUND CONTRIBUTORS

Fund Manager, Amount, Number of Givers and Per Cent Contributing Shown by Classes

\$155	1938	13	Dr. Howard P. Haswell Dr. Oliver R. McCoy Dr. Theodore H. Noehren Dr. Anson Perina Dr. Paul Ronniger Dr. Albert P. Rowe Dr. Charles C. Shepard Dr. S. Willard Smith	Dr. Hugh S. Richards, Jr. Dr. Franklin H. Schaefer Dr. David I. Seibel Dr. Richard T. Snowman Dr. Wellington B. Stewart Dr. Alvin Ureles		1935 Lowell O. Randall
						1936 Fred Perrin Roswell Bruce Peters
			\$249.50	1943	36	1937 Samuel Bojar Ernest P. Dean
						1938 Samuel W. Bloom
\$182	1939	19	Dr. Martin S. Barnes Capt. Theodore L. Bartelmez Dr. Raymond G. Benjamin Dr. Leslie R. Bennett Dr. David Blanchet Dr. William F. Boucher Dr. John R. Carter Dr. Robert A. Bruce Dr. B. Otis Cobb Dr. Sidney H. Cohen Dr. Norman S. Cooper Dr. Royal S. Cutler Dr. Robert M. Dumm Dr. Gregory K. Dwyer Dr. W. M. Edmonstone Dr. William W. Howe Dr. Ralph H. Kellogg Dr. Thomas R. Kirk Dr. Roland B. Laury Dr. James C. MacDermott, Jr. Dr. Theodore Glenn Martens Dr. Frederick J. Martin Dr. Frank W. McKee Dr. Harry S. Phillips Dr. Donald C. Phillips Dr. Martin F. Randolph Dr. Edwin A. Robinson Charles A. Rogers Dr. Charles A. Rowe Dr. John A. Segerson Dr. Raymond J. Simmons Dr. W. George Swalbach Dr. David C. Thurber Dr. Charles E. Weber Dr. Edward B. Wells Dr. Earl Witenberg			1940 Morton W. Finch Eli Allan Lipman John William Zaber
						1941 Edward F. Flint, Jr. George M. Gantz
						1942 Herbert Scoville, Jr.
						1943 Jerome J. Howland, Jr.
\$178	1940	22				1944 Erwin Klingsberg James R. Vaughan, Jr.
						1945 Robert E. Hopkins Eddie G. Lindstrom Lewis V. McCarty Joseph D. Overman
			\$128	1944	19	1946 Paul E. Fanta Alfred Ginkel Robert Melvin Murphy David K. Fukushima Robert J. Thompson, Jr. Hendrick C. Van Ness
						1947 Vernon A. Breitenbach Jerald D. Bullock Robert E. Curtis William L. Engan Arvo John Juhola
\$110.50	1941	15	Dr. Franklin Brayer Dr. David R. Bryan Dr. Preston J. Burnham Dr. Henry T. Clark Dr. Robert W. Coon Dr. John E. Edwards Dr. Dean Fisher Dr. Richard Fowler Dr. James F. Gardner Dr. Sawyer A. Glidden Dr. Stuart W. McLeod Dr. James G. Parke Dr. Charles F. Post Dr. William H. Smith Dr. Roger Terry Dr. H. B. Van Dusen Dr. Paul E. Wasson Dr. William D. Welton, Jr. Dr. Richard S. Wilson			1947 David W. Alling Dr. Richard S. Blacher Dr. Burton M. Cohen Dr. Gordon Davenport Dr. Philip Hugh Dickinson Dr. Alexander E. Dodds Dr. Philip Rogers Dodge Dr. Marvin Epstein Dr. Edward D. Fuoco Dr. Joseph R. Gladue Dr. Robert A. Graves Dr. Arthur L. Gropper Dr. John R. Jaenike Dr. Glenn Eugene Jones Dr. Thomas William Moir Dr. Ralph C. Monroe Dr. Charles S. Ness Dr. Charles M. Ross Dr. James Sylvester Dr. Raymond K. Wess
						1948 David C. Barton James R. Beall Harry Butler The Reverend E. Robert Cable Edward Henry Dowling William R. Nolan David Farrar Mitchell Harold E. Paddock Seymour Rothchild Stanton B. Smith
			\$111	1945	24	1949 Gordon A. Allen Charles Emerson Boddie James Ernest DuBois J. E. Gilda Donald Nash Richard N. Pugh Frank Joseph Schantz Kermit K. Schooler Jack Tishkoff
						GRADUATE SCHOOL
\$104	1942	14	Dr. David S. Baldwin Lt. Robert L. Burdick Dr. Floyd E. Bliven, Jr. Dr. Lewis Hogg, Jr. Dr. Michael T. Di Roberto Dr. William M. Jackson Dr. Howard Joos Dr. Charles Kennedy, II Dr. Jacob Koomen, Jr. Dr. Herbert Lutz Dr. Dickinson Lippard Dr. Francis W. Masters Dr. Rudolph C. Matfield Dr. Marion E. McDowell Dr. Jay B. Moses Dr. Bernard R. Nebel Dr. Ysidore R. Perez Dr. Menderson W. Phillips			\$319
						47
						Chairman: Harold Paddock
						1933
						Fred H. Lines Stanley B. Peters

HOW DID YOUR CLASS DO?

Annual Giving by Classes, College for Men, 1950 Alumni Fund

Class	Class Fund Manager	Amount		No. of Con- % Con- tributors tributing			Class	Class Fund Manager	Amount		No. of Con- % Con- tributors tributing						
		1950	1949	1950	1949	1950			1950	1949	1950	1949	1950				
'54		\$ 100.00	\$100.00	1	1	—	'21	Basil Weston.....	716.00	373.50	33	27	76				
'81		100.00	100.00	1	1	50	'22	Floyd Hovey.....	847.00	883.00	38	30	79				
'83		7.00	7.00	2	2	66	'23	Hoyt S. Armstrong.....	356.00	402.00	37	47	49				
'84		5.00	5.00	1	1	100	'24	C. Elihu Hedges.....	462.50	455.00	35	42	64				
'85		50.00	30.00	1	5	25	'25	Austin C. Tait.....	1,220.50	1,101.50	62	64	83				
'86		40.00	13.00	3	3	50	'26	Fred Metzinger.....	375.00	420.00	29	31	44				
'88		5.00	3.00	1	1	33	'27	John W. Thorne.....	438.00	379.00	35	41	50				
'89	Kendall Castle.....	250.00	275.00	5	5	63	'28	Nicholas E. Brown.....	270.50	298.00	30	36	42				
'91	Smith Sheldon.....	165.00	215.00	4	3	80	'29	Fred Zimmer.....	510.50	392.00	47	52	52				
'92	John S. Wright.....	77.00	100.00	6	6	60	'30	Norman M. Howden.....	361.00	347.50	38	49	45				
'93		95.00	40.00	5	4	50	'31	Peter J. Braal.....	619.00	561.00	53	57	61				
'94		82.00	39.00	5	6	50	'32	Albert Thomas.....	523.50	388.00	41	39	46				
'95	Joseph Humphrey.....	90.00	70.00	8	10	57	'33	Lewis Schauman.....	508.50	366.00	61	52	62				
'96	ThurLOW W. Buxton.....	30.00	28.00	4	5	67	'34	Joseph Noble.....	681.00	398.50	72	59	73				
'97	Albert Stearns.....	116.00	100.00	9	14	60	'35	Gordon Waasdorp.....	782.00	544.50	81	64	70				
'98	Ralph Webster.....	336.00	218.00	8	12	62	'36	William Lacey.....	485.00	443.50	63	69	45				
'99	Herbert S. Weet.....	426.00	400.00	23	25	144	'37	Robert Weingartner.....	698.00	638.00	77	91	57				
'00	Clinton R. Lyddon.....	236.00	145.00	9	8	75	'38	Philetus Chamberlain.....	464.00	545.00	60	76	54				
'01	Eugene Roeser.....	350.00	390.00	17	20	71	'39	Donald McCowan.....	391.00	422.00	63	60	55				
'02	Ernest L. White.....	235.00	222.00	7	16	28	'40	Robert Paviour and Robert Tucker	365.50	324.50	49	48	43				
'03	Joseph R. Wilson.....	458.00	384.00	16	13	124	'41	Guy Bondi.....	264.00	307.00	45	55	39				
'04		50.00	26.00	2	4	22	'42	Frank Phillips.....	241.60	305.00	46	60	41				
'05	Arthur L. Stewart.....	292.00	255.00	10	10	63	'43	Otto Layer.....	294.75	344.00	57	69	56				
'06	Embry C. MacDowell.....	319.50	308.50	14	23	40	'44	John Handy.....	500.00	469.00	89	90	58				
'07	George T. Sullivan.....	255.00	230.00	13	14	57	'45	Robert Koch.....	182.00	250.00	28	45	23				
'08	Harold E. Akerly.....	209.00	220.00	19	22	79	'46	Myron DeWolf.....	203.50	163.50	41	35	28				
'09	Cornelius Wright.....	705.00	730.00	30	34	92	'47	Jack Dunlap.....	180.00	287.00	38	48	14				
'10	E. Willard Dennis.....	785.00	568.00	23	20	92	†'48	Donald Fisher.....	399.11	355.00	67	53	30				
'11	Macdonald Newcomb and Harry Ruppert.....	1,025.00	787.00	24	33	52	'49	Harry Nickles and Richard Scott ..	223.52	353.00	68	118	22				
'12	C. Storrs Barrows.....	320.00	378.00	19	31	66	'50		539.00	—	265	—	70				
'13	James M. Spinning.....	741.00	618.50	44	44	96	TOTALS:.....						\$26,138.98	\$23,134.00	2,281	2,208	60
'14	Richard Wellington.....	740.00	525.00	34	35	97											
'15	Fred A. Ratcliffe.....	250.00	191.00	17	16	50											
'16	Sidney Adsit.....	636.50	608.00	36	38	67											
'17	Howard Henderson.....	816.00	660.00	24	24	68											
'18	Harold Cowles.....	433.00	534.00	32	43	65											
'19	David Moody and Paul Kreag.....	397.00	518.00	19	23	76											
'20	M. Stuart Hyland.....	810.00	577.00	38	26	88											

*In Memoriam

†Includes Insurance Premiums, Class of 1948 Gift Fund

‡Includes \$843.98 received after July 1, 1950

1950 ALUMNAE ANNUAL GIVING FUND CONTRIBUTORS

Fund Manager, Amount, Number of Givers and Per Cent Contributing Shown by Classes

1902—Miriam Seligman
\$30 **3** **100%**
 Mary DeLand
 Mary Gillette
 *Miriam Seligman

1903—Eleanor Gleason
\$65 **4** **67%**
 Ruth Dennis Burritt
 Eleanor Gleason
 Evelyn O'Connor
 *Julia Seligman

1904—May Lawler Cole
\$93 **8** **62%**
 Miriam Bagley Carpenter
 *Alice Colby
 May Lawler Cole
 *Emma Lotz Huff
 Gertrude Minnie Jones
 *Lulu Covey Keople
 Eleanor Lattimore
 Annie Rosenberg Lipsky

1905—Helen Rogers Cross
\$78 **7** **64%**
 *Helen Rogers Cross
 Mayme Smith Ederly
 *Florence Levis Fisher
 Gertrude Bancroft Miller
 Lavanita Dimick Miller
 *Avalyn Woodward
 *Jane Crowe Maxfield

1906—Ethel Kates
\$116 **8** **73%**
 *Lilian Crafts
 *Blanche King Egner
 *Charlotte Stone Hooley
 *Ethel McKay Kates
 *Helen Thomas Kates
 Eleanor Lawless
 Herma Harkness Shurtz
 *Leah McParlin Uebel

1907—Emaline Haap
\$32 **7** **87%**
 Effie H. Esson
 *Emaline Haap
 Ethel Rogers
 Lucy Higbie Ross
 *Florence Russell
 *Bessie Pettis West
 Clara Vogel Young

1908—Dorothy Dennis
\$147 **21** **87%**
 Edith Briggs Andrews
 *Marian Salisbury Anthony
 Sue Taylor Barker
 Carolyn M. Bolger
 Mary Lane Brewer
 Francoise Klein Courtney
 Grace Fowler Cropsey
 Dorothy Dennis
 *Clara Abbott Duncan
 *Beulah E. Fuller
 Alicia Morey Graham
 *Jessie Olney Gurney
 *Justine Tiffany Hickok
 Ruth T. Miller
 *Marion D. Mosher
 Grace Hall Pratt
 Blanche Griffith Savage
 *Lillian J. Stoneberg
 *Ethel Turner
 *Ollie Braggins Watkeys
 *Ethel Bills Wickens

1909—Mary Moulthrop
\$71 **11** **85%**
 Laura Lawless Braisted
 Frances Henderson Cross
 Ruth Jennings Hodge
 Isla Slocum Judson

Ruth Maddock
 Grace B. McCartney
 *Mary Moulthrop
 *Edna Parker
 *Esther Sheridan Smallwood
 Frederica Warner
 Arley Rider Whitmore

1910—Katharine Bowen Gale
\$265.50 **21** **81%**
 Maude A. Allen
 Hazel Bascom Aprile
 *Elizabeth Farber Barry
 *Marion Taylor Bohacket
 *Anna L. Colcord
 *Katharine Bowen Gale
 *Ruth Gilmore Hattersley
 *Corabelle Palmer Hutchison
 Edith Jackson
 *Frances Angevine Keef
 *Lucia Hewitt Lee
 Frances Slayton Marble
 Hazel Chapman Meriman
 *Louise Munson Parkin
 Olive F. Pye
 Helen Richards
 Frances Somers Riggs
 Alice Challice Robinson
 Martha Kingston Schoonmaker
 Beatrice R. Tripp
 *Lois Turner

1911
Myrtle Cheesman Keith
\$77 **14** **78%**
 *Margaret F. Barss
 Julia Carman Barton
 Ina Eldridge Beach
 Francis Brady Davis
 Lois Merrell Dinse
 Marie Crahan Donnelly
 *Jessie D. Holloway
 Una Hutchinson
 *Myrtle Cheesman Keith
 A. Leila Martin
 Marion MacLean Newhall
 *Jennie Fenner Stolbrand
 *Marian Maguire Sullivan
 *Cora Warrant

1912—Marguerite Castle
\$99 **15** **50%**
 *Katharine Halsted Anderson
 Martha Betz
 *Florence E. Carman
 *Marguerite Castle
 *Agnes Thistlethwaite Gay
 *Edna Haggith
 Marian Laley
 Adelaide Dodds Larkin
 *Dora Neun
 Edna Fardee
 Blanche Corcoran Randall
 Helen Marsh Rowe
 *Frances Glotzbach Steve
 *Edith Barker Swigart
 Zetta Doolittle Thatcher

1913—Madeline Madigan
\$151.50 **22** **59%**
 Margaret Neary Bakker
 *Edna E. Bayer
 *Ruth Wooster Brown
 *Ruth Brownell Brainerd
 *Carolyn M. Castle
 Annie L. Craigie
 *Edith Allen Haglund
 *Alice Booth Holmes
 *Carolyn Kintz
 Anna Seely Hunt
 *Margaret Weaver Little
 *Madeline Madigan
 Marguerite Uebel May
 Louise Haines Riggs
 *Irene Larzelere Schouton
 *Avadna Loomis Seward
 Helen Parker Smith
 *Alice M. Stevenson
 *Judith Ogden Taylor
 Lorna Carpenter White
 *Elizabeth Dunbar Wright
 *Bessie Schooler Yalowich

1914—Laura Battams Davis
\$138 **23** **60%**
 *Corinne Kintz Blair
 Gladys J. Bullard
 *Marjorie Hatch Creal
 *Bertha Cudebec
 Laura Battams Davis
 *Muriel Day
 Madelyn Walker Denise
 *Pamela Matthews Fields
 Lillian Blakeslee French
 Ruth Surgenor Gallup
 *Ruth Becker Hanna
 Henrietta Bancroft Henderson
 Grace Harper Johns
 *Emily Kingston
 *E. Virginia Martin
 *Mildred E. Murenberg
 *Maude Lambert Peterson
 Alice Mills Reeves
 *Eulalie Richardson
 *Helen Hartung Robinson
 *Julia L. Sauer
 Ethel Shields
 *Helen Seifert Wolgast

1915—Ruth Sargent Miller
\$140 **17** **74%**
 Josephine Delays Bassett
 *Vina Biggart Bezzant
 *Ethel L. Bloomingdale
 *Florence M. Broxholm
 *Winifred Edwards Cleland
 Jean Goldstein Cohen
 Florence M. Farlow
 Velma Hallauer Hand
 *Wilhelmina Horn
 Doris Hawks Kennell
 Rose Curtis Lapham
 Ruth Sargent Miller
 *Jeannette Kies Moore
 Alethea Keys Perry
 Isabel Griswold Schrader
 *Mabel M. Truesdell
 Mary Weaver

1916
Mabel Hewlett Gianniny
\$145 **18** **58%**
 *Mary Edwards Bacon
 Katherine Smith Connell
 Emma Collyer Donlon
 *Mabel Hewlett Gianniny
 Clara Hoffman Gilt
 Ruth Glasier
 Clara A. Kaiser
 Eleanor Merz Keenan
 Emily Cutler Kruger
 Florence Laley
 Mildred M. Laley
 Adele Smith May
 Amy Treman Milliman
 *Elsie G. Neun
 *Linda Schneider Thurston
 *Isabel K. Wallace
 *Susie Marie Williams
 *Gladys White Wise

1917
Mabel Hager Ellsworth
\$328 **24** **70%**
 *Mildred Bowen Bodette
 Pauline Claffey
 Nan McGlennon Comstock
 *Lorena M. Cooper
 Christine DeZutter Covert
 *Olive J. Crocker
 Ruth McKie Cross
 *Mabel Hager Ellsworth
 *Esther Hale Gosnell
 *Josephine Booth Hale
 Esther Olsan Hyman
 *Jessie Taylor Isles
 *Johanna Ramsbeck Kall
 Verna King Meng
 Marie Maier Mitchell
 *Rube Bagny Morrison
 *Flora Crombie Pease
 *Elberta Hudson Reeve
 *Clara Bowen Sage
 Jane K. Salter

Isabel Hollister Tuttle
 *Sadie Rose Weilerstein
 *Helen E. Weston
 *Mildred D. Wilcox

1918—Ruth Gentles
\$359 **31** **66%**
 Anna L. Ball
 Lois Richmond Braggins
 Muriel Handy Brown
 *Dorothy W. Curtiss
 *Esther Hurley de Weerd
 Marion L. Flowers
 Elsa Dossenbach Foulds
 Ruth Gentles
 *Ruth Otis Gillette
 Elizabeth Grover
 Edna Hixson
 *Elizabeth Mullan Keil
 *Margaret C. Klem
 *Dorothy Dobbin Loveland
 Augusta McCoord
 Mabel McCoord
 *Florence DuFour McNair
 Evelyn Crouch Menzie
 *Gertrude Herdle Moore
 Clara Harvie Morris
 *Ruth Gliddon Ostendorf
 *Alice M. Paddock
 *Wilma Lord Perkins
 *Ernestine Krieger Sasse
 Alice D. Saxton
 *Elizabeth Wagner Slater
 Dorothy Alexander Smith
 *Norma Storey Spinning
 *Marie Stone
 Leslie Somers Watt
 *Florence Wolff

1919—Thelma Sager Smith
\$218 **36** **72%**
 *Helen Lawrence Ashbery
 *Mildred Benedict Bond
 *Florence Lookup Butts
 Edna De Nio Carter
 Ruth Chamberlain
 Ruth M. Christler
 *Minerva Thistlethwaite Durfee
 Jessie Guinan Eppinger
 *Mary C. Foley
 Elizabeth Filkins Gessler
 Eleanor Garbutt Gilbert
 *Helen K. Goosen
 Lucia Gridley
 *Beatrice Kaiser
 Helene Tierney Kelley
 *Margaret Lieber Kirsch
 Mabel Ross Kulp
 Esther Bentley LeMessurier
 *Marion Henckell Levering
 Mary White Macauley
 *Honora Miller
 Pauline V. Moore
 *Virginia Moscrip
 *Dorothy Ovenburg
 *Esther Henckell Ratcliffe
 *Helen Roblin Roblin
 *Ottile Graeper Rupert
 *Aurelia Hillman Sanders
 Gertrude M. Scott
 *Thelma Sager Smith
 Alice Morse Snider
 Della Allen Somers
 *Katharine Van de Carr
 *Florence Van Hoesen
 *Lois Walker
 Elizabeth Whalen

1920
Eleanor Gregg Kingston
\$191 **29** **58%**
 Elizabeth Gay Agnew
 Bertha Kannevischer Arlidge
 Alta Howard Burrows
 Minnie Cleaver
 *Helen Kennedy Crino
 Emily Oemisch Dalton
 Margaret Fraser
 *Ethel French
 Gladys Tozier Greene
 Elizabeth Babcock Gruppe
 *Irene Hess
 *Esther A. Horn

*Life Member

†Deceased

1950 ALUMNAE ANNUAL GIVING FUND CONTRIBUTORS

Fund Manager, Amount, Number of Givers and Per Cent Contributing Shown by Classes

*Ida Thurston Kilgus
*Eleanor Gregg Kingston
Neva Smy Kroha
Doris J. Lamoree
Ruth Rowland Lee
May Barnes Leuty
Emily Sauer Morford
Doris Andrew Ogden
Beatrice MacCargo Padelford
Jane Latimer Reitz
*Mildred Long Reitz
Alta Eastman Rizer
Alice Hall Schermerhorn
*Helen Foulkes Sykes
*Emily Otto Trimby
Beulah M. Watkins
Miriam Goldblatt Wershub

1921

Belmont Thompson Cook

\$189.50 32 59%

*Merle Kolb Alling
*Helen Upham Bartlett
Marie Hartung Binkley
Esther Callahan
Belmont Thompson Cook
Helen Smith Detwiler
*Eleanor Hicks Edwards
Pauline Fritz
Winifred C. Genung
Frieda A. Gillette
Mabel Graham Green
*Ruth A. Hahn
*Lois Paddock Hicks
Thelma Benedict Hyland
Eleanor George Jennings
Ruth Kenyon
Constance Strassenburg O'Keefe
Edith Nusbickel Oviatt
Cecile Mills Palmer
Alice O'Reilly Parker
Monica Quinlivan
Marjorie Sheffer Schaeffer
Elizabeth Schleyer
Vernette Sickles
*Frances Barber Starr
*Marjory B. Storey
Erwinie L. Van Dyne
Mildred E. Walter
Laura Hewlett Warren
*Gladys Welch
Hannah Spencer Welton
Helen Spinning Werner

1922—Olive Flint Cornwell

\$149.50 29 56%

Doris Gillette Anthony
Josephine Sherburne Bassage
Alice Egan Benjamin
Edith Sheldon Brayer
Edna Butterfield
Olive Flint Cornwell
Constance Pratt Dailey
Delora Hopkins Engert
Mary Fillmore Gardner
*Sabra Twitchell Harris
Ruth Blaesi Hathorn
Sabra J. Hook
Charlotte Westcott Johnson
Cornelia Grenelle Kerslake
Ethel Brightman Klee
Minna Clifton Lee
*Clara Lee Lockwood
Roberta Peters McFarland
*Margaret Tracey Noonan
Janette Parmele
Elessa Prien
Emma Kittredge Quinn
Carrie Sanford Schulze
*Sara Sedita
Stella Sherman Stolley
Ruth Loomis Wager
*Dorothy O. Widner
Elizabeth Esley Winchip
Roberta Jennings Winslow

1923

Frances Greene Wilcox

\$221 33 61%

*Mae Lauterbach Bailey
Margaret Benedict Baker
*Elizabeth Kennedy Benedict
Dorothy Wile Bean

Frances Crombie Brouwer
Marjorie Swarts Brown
H. Marjorie Burnett
Beulah Brusie Compton
Bernice Adwen Cronan
Frances Hahn Donovan
*Louise Olmsted Ewell
Mildred Hall Gleichauf
Olga Graeper
Miriam K. Haag
*Gladys VonDeben Hammond
Ethelyne Gillette Hazen
Claudia Goldstein Hyman
Maude E. Kahler
Muriel Huff Keith
Juliet Schooler Levin
Loretta McCarty
Berenice Tropy Meckfessel
Avis Johnson Oehlbeck
Lois Patchen
Laura O'Neil Quinlavin
*Eve Weil Ripperger
Miriam Davis Rohl
Marjorie Mandeville Seward
Belle London Sherman
Violet Jackling Somers
Helen Kies Weston
Dorothy Wetmore
Frances Greene Wilcox

1924

Dorothy Dumont Schumann

\$319.50 45 69%

Martha Spinning Ashton
Laura Hockins Bacon
Marion Clark Bailey
Adair Wellington Bartholomew
Margaret Jewell Bennett
Dorothy Lobbett Burdick
Dolores Kellogg Carver
Florence Bradstreet Cooksley
Hazel Kolb Cowles
Alice Kreag DeMallie
Catherine Smith Gibbons
Helen Berman Greenstone
Janice B. Harrington
Ruth Vanderpool Hubbard
Alice Teute Justice
Adelaide Kaiser
Katharine L. Kerrigan
Esther McGowan Low
Margaret McCormack
Lillian Scott Miller
Florence Gunson Morse
Elizabeth Holman Paddock
Jennie Page
Eleanor Rand Place
Ruth Warren Porter
Louella Stacy Posey
Gladys E. Reed
*Emily L. Rowe
Helen Gosnell Sayres
Dorothy DuMont Schumann
Marion Weaver Soule
*Katharine Barber Swift
Kate Hale Trahey
Elizabeth Turner
Rose Van Geyt
Phoebe Day Van Riper
Helen Westcott Watson
Margaret Weston
Rosemary White
Marian Booth Wiard
Doris Barnes Wignall
Lucille Rohr Williams
Vera B. Wilson
*Lydia M. Wuensch

1925—Florence Stein Rubens

\$352 52 57%

Charlotte Garland Alexander
Marian Allen
*Marjorie L. Bickford
Bernice Whitham Brugler
Mildred R. Burton
Naomi Hull Carman
Mary Channell
Martha Cobb
Jean Masters Cole
Ruth Snider Crossland
*Marian Cummings
Margaret O'Shea Delbridge
Marian Boddy Englert
Edna Fairman

Harriet R. Feary
Dorothy Edwards Fraser
Helen Fairman Freeland
Hazel M. Ganiard
Irene Downs Gendreau
*Dorothy Fillingham Greenfield
Lura Schanck Hanley
Eleanor Hattersley Hanson
Ruth Tuthill Hoffmeister
Gertrude J. Howe
Christine Filkins Jolley
Jane Mutchler Jones
Frances Kenyon
Virginia Mansfield Kuhn
Gladys Adams Kykendall
Virginia Patchen Lauterbach
Grace Green L'Esperance
Ida Watt Lynch
Dorothy Bissell Martin
Mary Alvord Mathewson
Margaret O. Meier
Marian Webster Olney
Mary Louise O'Reilly
Ruth Page
Dorothy Brown Redding
Florence Stein Rubens
Mildred E. Scribner
Elsie M. Seward
Helen Frankenfeld Slater
*Pauline Meader Stalker
Marcella A. Statt
Irene Bush Steinbock
Marion Craig Steinmann
*Marion Forristal Sweeney
Mabel Hastings Van de Mar
Leonora Granata Willett
Sally Wile Wissman
Martha Pratt Wood

1926—Emma C. Donk
\$266 44 68%

Jennie L. Alessi
Iris Elizabeth Almy
Virginia Monaghan Attridge
Frances DeWitt Babcock
Julia E. Bishop
Clara Gienke Bode
Catharin W. Brown
Julia Zuck Brown
Marjorie Brownell
Margaret Butterfield
Elizabeth Roberts Cooper
Ruth O. Denio
Merle Derrenbacher
Jessie Ramsay deWitt
Emma C. Donk
Dorothy Atkin Duckworth
Esther Torpy Dutton
Veronica Fanning
Mildred Forster
Julia McMillen Goodwin
Lois Dildine Harrison
Lucretia Colby Hicks
Ruth Hollander Hill
Elizabeth Wolters Kennedy
Florence Kenyon
*Margaret E. Lang
Marjorie Sidam Lowden
Margaret Foley Madigan
Mabel Esley Matthews
Juanita Erwood Maynard
Elizabeth Sullivan McGill
Edna Hewes McMurtry
Margaret Merrell
*Flora Miller
Berenice E. Miller
Irene Muntz
Sallie Metzgar Nagle
Barbara Haslip Robinson
Marion Gell Roller
Doris Dapson Scott
Dorothy Marples Seuffert
Ruth Beecher Wendt
Marion Winkleman
Orrilla Wright

1927—Edith Savage Durfee
\$253.50 44 51%

Mabel E. Brockway
Marion Houlihan Brown
Helena Burke
Bertha Taylor Crothers
Helen Higgins Davis
Harriet Neun Ferris

Mary Fischer
Mildred Gleichauf Gordon
Clara Hamel
Irene Sergeant Hatfield
Helen Allen Hayes
Jeannette Hoefler
Ruth Asmus Howard
Jennie Jacques
Ruth Greene Linfoot
Myrtice Splitt Mault
Mary Shedd Miller
Elizabeth Bitter Mitchell
Dorothy Abert Morsheimer
Helen Blackburne Power
Clara Husted Present
Annette O'Neil Reed
Gertrude Blensinger Sandvik
Mary Meagher Schifferli
Catherine A. Sheehan
Jessie Geddes Silberstein
Elizabeth Broadbridge Sinclair
Mabel Martens Snell
Caro Fitz-Simons Spencer
Elizabeth Genung Steadman
Jane Dye Stirling
Helen Tanger
Adelaide Treman Thomson
Vera Tweddell
Eva Haines Ulp
Deilah Van Blaricum
*Lucile Miller Van Delinder
*Marian Maggs Vicinus
H. Janet Weir
Hazel Wilbraham
Leone Bush Winchell
Evelyn Newman Wishart
Margaret Young
Elizabeth A. Roblin

1928—Mary Ascroft McNall
\$314.50 47 61%

Rose Abramow
Dorothy Andrews
Ruth Armstrong
Inez D'Amanda Barnell
Elizabeth H. Beam
Marjorie Koninsky Braiman
Virginia Whipple Brooke
Margaret Burdick Burroughs
Alice Purssell Campbell
Lois Chadsey
Marion Kellogg Christie
Antoinette Syracuse Deni
Adelaide Dorn
Ruth Schwolsky Dworski
Jessie Cook Estes
Henrietta Spencer Feeser
Helen Fremd
Mabel Teute Gardner
Agnes Geddes
Marie Mooney Green
*Marian B. Halstead
Lelia M. Haughwout
Alice Peck Hess
Esther H. Holyer
Kathryn Foulkes Jensen
Laura Kellogg
Jessie Hoskam Kneisel
Alice Bark Knubel
Hazel Hilfiker Lalonde
Alta Poze Lapidis
Mary Leader Lewis
Grace Elma Madden
Mary Ascroft McNall
Annette St. Helens Norris
Mary E. Oemisch
Marian H. Phillips
Dorothy Thayer Pullen
Rose Riwkin
Adelyn Bareis Spitz-Nagel
Geraldyn Baker Storaand
Jessie E. Tinsman
Ruth Wentz Van Ostrand
Elizabeth Harvey Waldock
Louise Gelli Wendt
Helen Scott Wight
Cynthia Gay Wright

1929
Dorothea Michelsen deZafra
\$303.50 60 63%

Dorothy Forster Abercrombie
Marion Phillips Armstrong
Beatrice Knapp Bassette
Eunice Betten

*Life Member

1950 ALUMNAE ANNUAL GIVING FUND CONTRIBUTORS

Fund Manager, Amount, Number of Givers and Per Cent Contributing Shown by Classes

Gertrude Wait Bisbee
 Marian Richardson Bleyler
 Martha J. Church
 Jessie M. Cole
 Jean MacMicken Coleman
 Esther J. Corwin
 Catherine Weggate Dale
 Ines deCaleta
 Dorothea Michelsen deZafra
 Florence Sweetnam Dickson
 Pluma Babcock Emerson
 Mildred Worthington Falsion
 Veronica Dollen Geoltz
 Mildred Messinger Goldstein
 Eva Gurnee
 Margaret Ball Hallock
 Margaret Easton Hamlin
 Dorothy Fox Heydweiller
 Lois Speares Howe
 Helen Phillips Johnson
 Mary Davison Koenig
 Kathryn Miller Kreag
 Elsie East Kyser
 Helen Trahan Lent
 Ruth Maxwell Loomis
 Jean MacLeod
 Laurette Siebold Magin
 Alice Morrissey McDiarmid
 Dorothy Wellington McIlroy
 Virginia Pierpont Miller
 Mary Page Norris
 Doris Creighton Odell
 Carmen Odgen Pedersen
 Marian Clarke Powell
 Ruth Haines Richardson
 Elsie Lisser Rockowitz
 Gertrude Zisser Rosenthal
 Margot Schuetze
 Teresa DiMiceli Sloan
 Marion Leffler Stalker
 Helen Williams Stevensen
 Hilda M. Sullivan
 Esther Beckler Tattelbaum
 Helen K. Tobin
 Beulah Stottle Travis
 Edythe Kraatz Tumulay
 Charlotte S. VanAlstine
 Marjorie Van Ryne
 Anna Rose Victor
 Geraldine Klix Walch
 Agnes Jordan Walter
 Marion C. Warner
 Lolita M. Wilcox
 Lorene Karleskind Zimmerman
 Margaret Hutchinson Zornow
 Dorothy L. Zwink

1930—Helen Marks Marth
\$239.05 43 44%

Michaline Corsica Alaimo
 Marian Barton
 Beatrice Boardman Bibby
 Abrona Batz
 Ethel St. Clair Baumann
 Guinevere Clarkon Curtis
 Wilma Ehrlich
 Lois Clark Fontaine
 Lela Brooks Fennell
 Edith Fishbaugh
 Miriam Fuhrman
 Mary Bott Greenfield
 Mable A. Hicks
 Elizabeth Thulin Hoelscher
 Amelia H. Hood
 Helen Taylor Howe
 Jeannette Berger Howlett
 M. Claire Irmie
 Dorothea Van Eenwyk Ingison
 Esther Newman Jenkins
 Frances Kersner
 Mary Ottaviano LaRaia
 Mildred Karweick Lauer
 Adeline Kaman Levine
 Mary Williams McAmmond
 Mabel Golden McCleary
 Helen Geraghty McNally
 Helen Marks Marth
 Josephine Raepel
 Gertrude Jones Reber
 Lillian Hallman Remmel
 Beatrice Poulton Rogers
 Harriett Roupp Rowe
 Helma Cirotzki Straub
 Dorothea Kellner Schwartz
 Irma L. Suess
 Ruth C. Thulin

Helen E. Van Alstine
 Margaret Hitchcock Walker
 Helen Zorsch White
 Evelyn Hooper Wilder
 True Wilson
 Mary E. Wintish

1931—Mildred Cramer
\$210 47 42%

Alberta Tupper Aradine
 Zilpha Bliss Bishop
 Helen Brandt Bloom
 Alice Cohen Cameros
 Dorothy B. Champney
 Mildred Cramer
 Ruth Kershaw Cuskey
 Marian M. Day
 Marion Flaherty DeRight
 Patricia Dodge
 Evelyn DuBois
 Ruth Harmon Fairbank
 Ernestine Giles
 Holliss Kemp Gunnison
 Beatrice Howard Hall
 Ethel Gage Heckel
 Beulah Albiker Hilfiker
 Kathryn J. Ihrig
 Hildegard Petri Jamison
 Elizabeth Scheible Killip
 Edith Bork King
 Louise Kaplan Kokis
 Hannah C. Kraus
 Dorothea Kaiser Lortcher
 Gladys Grattan Mahler
 Erma Noetling Marsh
 Jane Havill Mehrhof
 Geraldine Jullian Mergamen
 Katherine LeFevre Miller
 Helen Marshall Mix
 Helen Schlegel Moretz
 Dora Myers Player
 Marie Freer Porter
 Florence Briggs Robin
 Miriam Rotkowitz Rudin
 Margaret Sharar
 Mildred Hetzke Sidler
 Phyllis Smith
 Ruth Ries Smith
 Clara W. Spear
 Adelaide Steedman
 Helen Fuller Steenrod
 Ann Turula
 Edith Reed Van Horn
 Onnalee Durkee Vaughn
 Anne Aab Weingart
 Phyllis Fulton Young

1932
Helen Cromwell Curtis
\$174 37 44%

Doris M. Adkins
 Beth Manning Anderson
 Helen Snearing Baker
 Betty Rosenberg Berman
 Olga Petrie Burmaster
 Frieda M. Chapin
 Ida S. Cramer
 Beulah Woods Deming
 Helen Dildine DeWolfe
 Margaret Kenyon Dieckman
 Jean Minges Duffield
 Janet Brown Fisher
 Jean Watkeys Gardner
 Gertrude Stiller Goldberg
 Dorothy Coffeen Hill
 Pearl Whited Howland
 Dorothy Erlich Kanwischer
 Grace C. Kimball
 Elizabeth Mears Lauchlan
 Charlotte Hockins Longman
 Dorothy Karr Markham
 Marjorie Sherman Mather
 Dorothy Sheldon McLean
 Bessie Posner Miller
 Adelaide M. Morrison
 Marian Weston Neun
 Anna Marie Rauber
 Helen Kurlansky Rukin
 Peggy Fisher Shultz
 Helen Bonner Taft
 Dorothy Bachers Tonkin
 Doris Brown Topping
 C. Jane Viall

Helen Cromwell Curtis
 Marian Lucius
 Elizabeth Burr Nixon
 Marion Johnson Remick

1933—Dorothy Cripps Salo
\$177 36 46%

H. Virginia Allen
 Carolyn Jeffery Barden
 Mary Heydwiller Benson
 Jane Clapp Catalfano
 Alice Brown Cesare
 Janet Champney
 Katherine Drum Coddington
 Eleanor Long Corlett
 Charlotte Schantz Creighton
 Ruth E. Cripps
 Grace DeSmit Dobbins
 Mary Fisher
 Margaret Goold Frey
 Mildred Grant Gariss
 B. Jane Gordon
 Helen Hess
 Emma J. Hughes
 Anna Bullis Koch
 Jane Harper Larson
 Jeannette Peterson Lathrop
 Marion Ludwig
 Marian LeFevre Manly
 Adelaide Geraghty Mathews
 Marion A. McCarthy
 Gladys Little McGuire
 Edna Muntz
 Dorothea Loysen Nolan
 Lois Welker Poelma
 Marjorie Reichart
 Dorothy Cripps Salo
 F. Eugenia Smith
 Mildred Randall Stalker
 Virginia Pierson Thornton
 Ruth Coxford Wilfe
 Adele Lefkowitz Herz
 Harriet B. Rippey

1934—Molly B. Taylor
\$184 31 37%

Frances Clark Beard
 Dorothy Pearlman Bohm
 Lois Wing Bulterman
 Jean Holton Clarke
 Dorothy VanGraafeiland Connelly
 Ruth Wilcox Emerson
 Helen Haven Ewell
 Marjorie A. Freer
 Juanita Border Gardner
 Grace Tuttle Hanks
 Alice Fletcher Harris
 Eunice Vass Harris
 Elizabeth Hahn Hayes
 Frances Smith Leadley
 Helen McTarnaghan Lyon
 Emily S. Madden
 Bertha Milbrandt Marsh
 Atelia Picciotti Melaville
 Mary Boughton Nugent
 Aurora Palleschi
 Elizabeth Connelly Pearce
 Harriet Decker Reynolds
 Meredith Dadswell Russell
 Ruth Sparr
 Mary Jane Stephenson
 Molly B. Taylor
 Dorothy Tozier
 Marian Redfern Ulp
 Esther French Wilson
 Elizabeth Bonner Wood
 Margaret R. Wright

1935—Florence H. Jacobs
\$306.50 52 54%

Laura Murphy Auburn
 Luella Marsh Babcock
 Roberta Wilder Brockway
 Marian Chamberlain Bruins
 Dorothy Schoenheit Chase
 Ruth Naditz Dankoff
 Mary Lay Davis
 Susanne Bogorod Dworkin
 Alice L. Ester
 Angelina Polsinelli Ferrari
 Marion Glidden
 Mary Burns Grice
 Lois Goehring Hill

Florence Hoffman Jacobs
 Elinor Snyder Kappelman
 Nancy Form King
 Elizabeth Harris Kraai
 Edith Harman Lapi
 Claire Meyer Leopold
 Edythe Telford Levitsky
 Elizabeth Mangan
 Monica Mason McConville
 Virginia Luehm Medden
 Virginia Townsend Miller
 Harriet J. Naylor
 Mabel Gleason Olney
 Grace Poelma
 Hanna Bargmeyer Pool
 Marion Berger Poze
 Virginia Pammenter Redfern
 Edith Mason Rice
 Kay Leiter Roeder
 Ruth Yalovich Rosenberg
 Edna Baschnagel Schaubman
 Dorothy Seaman
 Kathryn Becker Smith
 Kathryn Albrecht Smith
 Ruth O'Grady Smith
 Pauline Paulson Spare
 Helen Holley Stiefel
 Marion Sullivan
 Janet Surdam
 Mildred Talluto
 Dorothy Hettig Waldeis
 Susan Glover Wantman
 Emily Cockett Warwick
 Chalice Ingelow Weiss
 Helen Poffenberger Wilkens
 Clara D. Crump
 Catherine A. Forster
 Betty Shaefer Noonan
 Elizabeth White Schaeffer

1936
Margaret Johnston Birrell
\$340.50 52 59%

Ruth Miller Ames
 Irma Goldstein Angell
 Julia D. Bailey
 Margaret Bailly Benford
 Margaret Johnston Birrell
 Wilma Doughty Brady
 Mary E. Cashman
 Mary Jane Winter Clark
 Sylvia Anas Commins
 Ruth Macomber Connor
 Mary Madden Conway
 Esther Allen Cotton
 Ruth Whipple Cross
 Clara Doshcer Crump
 Myrtle W. Dalgety
 Dorothy Owen Davis
 Marion Jones Dick
 Virginia Ester
 Grace Hochlman Forbes
 Margaret Glynn Foster
 Elizabeth Collins Frisinger
 Marjorie Gilles
 Marion Ogilvie Hamilton
 Louise Hendryx
 Alice Ramsay Hill
 Grace Storaandt James
 Anne B. Johanson
 Ruth Nadel Lempert
 Sylvia Gray Lipton
 Ruth Waugh Lloyd
 Suzanne Trimble Lovejoy
 Edith G. Lyon
 Frances Ensign Marks
 Helen J. Martin
 Jean Wallace Meyerhoff
 Barbara Ruth Olsan
 Ruth Seebach Parker
 Helen Sage Platt
 Marjorie East Quinn
 Marguerite Smith Robertson
 Charlotte Egbert Schaefer
 Helen Hewitt Servis
 Ruth Graves Stahlbrodt
 Harriet Frank Tattelbaum
 Helen Hatch Taylor
 Betsy Conant Thacher
 Helen Wishart Thorne
 Maime J. DiPasquale Turchetti
 Ellenmae Vierviger
 Evelyn Hunter White
 Rhea Cook White
 Stella Strzeciwiak

1950 ALUMNAE ANNUAL GIVING FUND CONTRIBUTORS

Fund Manager, Amount, Number of Givers and Per Cent Contributing Shown by Classes

1937—Florence E. Lyddon
\$299 45 44%

Elizabeth Von Wiegen Anderson
Helene Berman Angevine
Susan Vogt Bender
Shirley Cohn Brodows
Dorothy B. Burton
Mary Romig Clement
Miriam Klonick Corris
Doris Bohachet Cox
Eleanor Collier Cray
Elizabeth Werner Cull
Marianne Curtin
Eleanor Alexander Drake
Elizabeth Winship Drisko
Norval Kramer Dwyer
Eleanor Bauernschmidt Franks
Harriet Cross Gale
Leona Edelstein Germanow
Margaret McGurk Hamilton
Helen Quigley Kalwas
Elizabeth Ward Kariher
Katherine Nowack Kentner
Doris Fellows Kimball
Eunice Mostkov Kroll
Gertrude Morley Lines
Ruth Schlosburg Lowy
Florence E. Lyddon
Justine M. Lynes
Helen Martin
Eleanor Ven Deusen Merrill
Helen Schlegel Moretz
Kathleen M. Morrissey
Ruth P. Oakley
Ruth Goodman Rand
Eugenia Scheid
Myra Mostkov Schwartz
Helen M. Shaddock
Mary Selden Short
Jané Stevens
Eleanor M. Martin Van Cassele
Mary Puffer VanKestern
Charlotte Aldridge Villnow
Margaret Doerffel Waasdorp
Lois Bean Welke
Annette Briggs Young
Jean Harding Porrato-Doria

1938—Jane Carhart O'Brien
\$221 37 40%

Josephine Hagstrom Agnew
Marjorie Mathes Ashe
Hazel S. Bastian
Louise Sweetnam Baxter
Helen Ancona Bergeson
Ione Hinman Buysse
Helen Harris Campbell
Rosemary Cherry Carlson
Shirley Bertolette Carpenter
Ruth Langer Coakley
Josephine DeStefanis Douty
Mary Dick
Mary I. Dwyer
Sally Pike Farnham
R. Elizabeth Forquer
Mildred Louise Ginther
Elizabeth Lusk Griswold
Jeanette Ewell Johnson
Ann Shepard Kelly
Jean Obdyke Kinney
Marjorie Knopf
Margaret Willers Mabie
Jean Griswold Mead
Shirley Duteuple Morabito
Martha Hulek Morlock
Elsa Reith O'Brien
Jane Carhart O'Brien
Mary Bosworth O'Sullivan
Jean Graves Scheible
Joann Guggenheimer Schreiner
Rosemary Seiler Terry
Eugenia Sheridan Smith
Ethel Klein Snapper
Margaret Graham Toeppen
Edith Chapman Wemett
Lucy M. White
Betty Bullen Kendall

1939
Patricia Palmer Jackson
\$406.50 78 59%

Kathryn Steele Abendschein
Edna Bennett Arnold
Jane Gregg Arnoldy

Ruth H. Asman
Mary Garrison Barnes
Ruth Levis Berner
Ruth Clifton Brenner
Betty Bass Britton
Betty Worner Brown
Jane Schuhl Brown
Betty Dennis Burt
Lois E. Clark
Wilma Cooney
Jane Holland Cooper
Lois Swart Crauer
Clemence Stephen Curry
Lois E. Davison
Harriet Brodhead Dowdy
Ruth Kavasch du Pont
Eleanor Courtney Eksten
Rose Engelman
Margaret Stebbins Farris
Mary Jane Jungklas Feahr
Dorothy Fergusson Foland
Onolee House Fortmiller
Emily Clapp Gillispie
Nathalie Levey Goldberg
Jeanne Hanson Goodhue
Marian Sage Grant
Ruth C. Graves
Doris Ulp Gregor
Beatrice Brown Haggas
Eleanor Robertson Hamill
Anne Schumacher Hammond
Josephine Sutton Harby
Bertha Peterson Harper
Jane Dibble Hildreth
Barbara Barnes Hopkins
Pollee Phipps Hruby
Patricia Palmer Jackson
Marian Woodside Kaley
Katherine Polowy Kowba
Frances R. Ladd
Dorothy I. Long
Dorothy Brandhorst McManus
Eloine Miller McWilliams
Norma Doell Miller
Eleanor J. Moon
Lois F. A. Mueller
Dorothy Copeland Mullen
Bertha Stevens Pierce
Laura Dick Pinney
Millicent Prenner
Margaret L. Rathbun
Ruth Jenks Rauscher
Gene Robbins Reich
Maysie Calder Rich
Florence Dunn Richardson
Helen Tefft Rothfus
Elizabeth Kilmer Saunders
Rosalie Scinta
Elizabeth Pierce Schwab
Dorothy McHenry Searle
Ida Jane Spies
Jane Wolcott Steinhausen
Helen Baybutt Summermatter
Josephine Szinkunas Hooley
Marguerite Thape Tierney
Ethel Davie Tripp
Bertha Hendryx Trueheart
Marion Devendorf Van Laak
Elizabeth Becker Villnow
Frances Bingeman Wagner
Margaret Hewins Waldo
Eileen Anne Welch
Frances M. Wood
Anna Weaver
Faith Niles Hart

1940
Winifred Courtney Hudak
\$238.50 51 52%

Doris Prouty Benard
Sylvia Gray Bloom
Eleanor Stewart Bloss
Catherine West Bryant
Marion Shoemaker Coburn
Nancy Billingham Countryman
Lillian Altman Courtheoux
Molly Raubacher Cowing
Margaret Keller Daniel
Thelma J. Ford
Jean Hamm Forman
Mary Margaret Gazley
Helen R. Gordon
Janet McCord Gordon
Marion Natapono Greeson
Eleanor Hammill

Eleanor Costlich Hammond
Margaret Darcy Heyer
Sheila O'Brien Holler
Doris Erskine Hoot
Jean Livingston Horst
Margaret A. Howland
Winifred Courtney Hudak
Sallie Shafer Jackson
Janet Webster Keyser
Marcella Neuman Kiger
Elsa Lapp
Ruth Anderson Lauterbach
Ada May Rayton Neary
Ann Olson Neuman
Frances Stevenson Newberg
Pauline Parce Parks
Janet E. Phillips
Margaret McCarthy Pickett
Rachel Foulkes Playford
Ruth Blake Rear
Eleanor Scheible Ries
Jeanne Brennan Sargeant
Josephine M. Scalzo
Bertha Field Schellberg
Margaretta Steele Scrantom
Anne Johnston Skivington
Lorraine O. Smith
Marjory Meng Smith
Mary Sutton Smith
Esther Teller Swamer
Elizabeth Gay Terry
Verna Claire Volz
Elizabeth Lanning Wilson
Marjorie Hall Winchell
Alveira Andrews Zelter

1941
Margaret Stevens Riggs
\$314 62 68%

Clara Bates Allen
Frances White Angevine
Constance Merwin Anthonson
Florence Blake Bauer
June Moffatt Buckley
Rosemary Wood Christ
Hetty Barth Crapsey
Beatrice Corn Crawford
Lorraine Hazen Crider
Jane Corp Coyle
Mollye Hoffman Edelstein
Elizabeth M. Fisher
Marjorie Van Ryne Fisher
Virginia Ward Forbush
Mary A. Fortin
Dorothy Neracker Gabel
June Heydon Galton
Suzanne Saney Good
Betty Anne Van Arsdale Hale
Ruth Harrington Harvey
Nancy Colgan Kennedy
Marjorie Somers Kleinberg
Doris Byington Lee
Patricia Fahrer MacLeod
Jane Maloney Maher
Jane Marvin
Grace McCormack
Katherine Lapham McCrossen
Doris Willey Milliman
Alice Stevenson Mohr
Eleanor Bettys Munson
Elizabeth Whitney Nicholl
Frances Hill Noonan
Lydia Reeh Parker
Gretchen Frizzell Pavour
Fay Muxworthy Peck
Ann Wellington Phreaner
Martha Morrison Pickelner
Carol McGregor
Janet Steve Prostko
Margaret Stevens Riggs
Barbara Bourgeois Rositzke
E. Anita Rusk
Ruth Schmidt Schalin
Doris Lindsay Schaubman
B. Jane Seemann
Rhoda Gardner Sherwood
Marjorie Mercure Sinclair
Helen Harper Skinner
Jean Rissberger Slaymaker
Emma Mueller Spielman
Hyla Hadley Strieby
Alice Taylor Sutton
Mary Kelly Taylor
Jean Prozeller Terry
Virginia Bettys Tobutt

Alice Hall Todd
Jannette Rausch VanPatton
Betty Jones Weingartner
Rita Weingartner Williams
Edith Rosenow Wyden
Catherine Zaenglein

1942
Virginia Corcoran Buycy
\$224 58 52%

Ruth Liddle Adriance
Barbara Schultz Allen
Elsie Siegl Ashenburg
Marie Better Baumer
Charlotte Willey Bergman
Angelina Boella
Patricia Brayer Brunson
Vivian Cranch Burke
Virginia Corcoran Buycy
Elizabeth A. Corbett
Mary Burdick Crandall
Madlyn Horacek Evans
Marlene Falkenheim
Betty Sharpe Foertsch
Winifred Martin Fowler
Verna I. Frasch
Jean Stewart Friar
Mary Garson Garner
Virginia Cardinale Giambrome
Suzanne Gordon Goodrich
Marjorie R. Graham
Harriet Davis Hamilton
Justine Furman Harris
Jean Lincoln Hart
Lenore Bond Harvey
Virginia Biret Herbrand
Janet Stone Holmes
Lorna Davis Howley
Harriet Gallup Jones
Ruth Chapin Koomen
Helen Jane Ladd
Adeleine Sears LaPlante
Jane Beale Lee
Jean Adkins Leferts
Mary Hawley McCauley
Ruth Meyer McCleary
Helen Nyquist Monroe
Gertrude Scott Nicholson
Laura Baker Palmer
Mildred Stanbro Pammenter
Catherine M. Quinn
Hortense Bassett Remein
Barbara Stevens Robeson
Helen Lamb Rosbook
Virginia Cole Schley
Doris Miller Schmitt
Doris Ermine Smith
Phyllis Craft Smith
Mary Helen Sneek
Jessie Church Spies
Alicia Fry Stewart
Mary Ann Pierce Sunderlin
Florence Brown Swain
Jean McNeill Sweeney
Lillian Parkin Vass
Juanita Jane Warner
Virginia Forquer Worner
Helen McDonald Wyland

1943—Doris Johns Cherry
\$225 58 52%

Miriam Nelson Aldridge
Anne David Allen
Alma L. Anderson
Jean McCune Andrews
Shirley E. Ashton
Ellen M. Baist
Elinor Kaufman Baker
Eleanor Beach Barker
Mary Dawson Bausch
Margaret Raynsford Benedict
Charlotte Tropman Bower
Eleanor Rehili Bradley
Doris Johns Cherry
Mary S. Cooper
Blossom Lackritz Cramer
Mathilde Weig Desmond
Ann Logan Dickinson
Virginia A. Dwyer
Betty Bostwick Evans
Betty Lasher Ewald
Betsy Phillips Fisher
Louise Blamire Fowler

1950 ALUMNAE ANNUAL GIVING FUND CONTRIBUTORS

Fund Manager, Amount, Number of Givers and Per Cent Contributing Shown by Classes

Carol Mantinband Ginsburg
Jessie Dyott Godsey
Ruth L. Goodland
Louise Heilbrunn
Helena Brewer Hilfiker
Gladys Greenwood Holtzman
Althea Haass Houck
Barbara Hopkins Jones
Catherine D. Jones
Naomi Kruger Kennedy
Beverly Marks Koval
Lois Mildahn Ley
Gloria Licastro
Mildred Newhall
Muriel Bullinger Newcomb
Carolyn Pierce Paddock
Norma Meyer Reckhow
Jane Gratz Schless
Jane Schmitt
Millicent Boyd Schongalla
Priscilla Schmidt Shettles
Barbara E. Smith
Mary Lou Head Sottong
Elizabeth Christ Stevens
June Bleyler Terry
Bethyne Pink Thomas
Helen Rose Towner
Marjorie Troesch
Betty Datthyn Walker
Margaret Kershner Weber
Janet Elam Weedon
Elizabeth Hanna Weiss
Janice Aikman Whitcomb
Lenora Page Ade
Claire Gale
Eleanor Rambart Trombetta

1944—Jean Dinse
\$191.50 53 60%

Marian Wert Aemele
Thais Levberg Ashkenas
Madeleine Spitz August
Halee Morris Baldwin
Agnes Blamer Boucher
Jeanne Schlitzer Carson
Helen McCord Chapman
Nancy Norris Crawford
Norma Crittenden
Elizabeth Dale
Robin Lucile Dennis
Jean M. Dinse
Ruth H. Donoghue
Anne Slater Dunlap
Marjorie Cook Faulkner
Barbara Fisher
Doris Woehr Fitze
Betty Exner Flesch
Mary Babcock Fyles
Betty Ann Giles
Ruth Burritt Greenbaum
Jane Richardson Groth
Margot Heilbrunn
Winifred Christ Hines
Doris Greeno Jones
Mildred Ferraro Kowalski
Marjorie Sullivan Lowentha
Sally Murphy
Dorothy E. Kuhnert
Anita Manning Little
Celestine Greenwell Malchalf
Lucile Julia Mason
Winifred White Morrissey
Lillian Kircher Neill
Jane Robertson Pettay
Marjorie Cora Pfaudler
Margaret Gilligan Phillips
June Anderson Porubek
Jane Post
Winifred Atchison Robinson
Sally Ingalls Rohrdanz
Katherine Carroll Shady
Nancy Shakespeare
Betty Sieger
Mary Kirchmaier Smith
Agnes Lin Sze
Jane Taylor
Betty Rosenthal Wile
Ruth Dillen Woods
Lucille Butter Carroll
Kathryn May Guncheon
Sally Murphy
Marian Maher Vaeth

1945—Ruth Keene Forsyth
\$204.50 43 38%

Shirley Dunn Aroesty
Elizabeth Gillette Baker
Julia Butts Barnes
Dorothy W. Barry
Betty Pearson Baybutt
Edith R. Beck
Margaret Contant Blaker
Jane Berggren Blizard
Virginia Sharp Carpenter
Ruth Hudak Chapin
Helen Thomas Coleman
Clairelouise Corriveau
Evelyn Meyers Currie
Jane Curtiss
Elizabeth Lockard Davis
Ruth Keene Forsyth
Emma Metz Haar
Ruth Evelyn Hagger
Roslyn Greenberg Kaiser
Margaret Ramsey Keck
Margaret Kranz
Jean M. Hamilton
Virginia Brayer Mack
Virginia Marks
Marjorie Jean McGregor
Janet Quinn Meyers
Mary-Kay Ault Morris
Eileen A. Murphy
Dorothy F. Pardi
Ruth Bently Parker
Barbara Chandler Rayson
Judith Rebasz
Eunice Lissom Robbins
Beatrice Fox Robenstein
Alice Yasko Rothing
Elizabeth M. Rowe
Betty Bebb Sager
Gloria Perryman Shambroom
Phyllis Wood Shear
Jane Thompson
Jean Anthony Tischer
Marion Kirch Young
Corrine Rosenkrantz Ziman

1946
Dorothy Murphy Meade
\$245 53 51%

Betty-Lu Widmer Adams
Jane Barhite
Barbara Bishop Bullock
Marie Meisel Cedars
Esther Spencer Clark
Jane Taylor Duerr
Cecile Genhart Dutcher
Shirley Mallett Ebert
Phyllis M. Egbert
Hope Harshaw Evans
Marilyn Gorin Feldman
Beverly Field
Doris Atanesian Foster
Hazel E. Fyfe
Emily Gilbert Gleason
Linda Denning Gosner
Jean Rodgers Havill
Helen Waasdorp Henion
Mary Jane Izzo
Rosa Drake Julstrom
Evelyn Willey Keene
Janet Keller
Doris Hawks Kennell
Dorothy Cohen Landsman
Marian Erickson Lappin
Judith Taylor Lehman
Ina T. Lombardo
Jean Hofferbert Marshall
Margaret S. Mattinson
Dorothy Constantine McCarty
Dorothy Murphy Meade
Jean Hoyt Melville
Nellie E. Northrup
Monique Tinlot O'Neal
Ruth Sobel Oppenheimer
Nada Blake Phillips
Marian Elaine Ragan
Alice Reber
Elizabeth Hoch Reese
Phyllis Renckens
Patricia Robinson
Joanne Bradford Sakrison
Lois M. Schramm
Barbara Happold Sherman
Sheila Smith

Thelma Smith
Anne Richards Thompson
Ina Skuse Thompson
Muriel Ehrich VanDeusen
Sonya Lyman VerLaine
Eleanor Kirch Wabnitz
Marie Anna Wegman
Janet Mann Wingard

1947
Ernestine Blauw White
\$274 69 53%

Marjorie Cohen Abrams
Nancy Wickson Adair
June Gilbert Alexander
Suzanne Axworthy
Jean Nichols Barber
Stephanie Henoch Barch
Nancy Bartlett
Gloria Knickerbocker Basye
Eileen O'Hara Blauw
Martha Mary Bolles
Margaret Bond
Jean Gibbin Burnett
Eleanor Cartwright
Nancy Levy Cohen
Marjorie Schreib Combs
Jean Helmkamp Cripps
Mary Emily Dalton
Polly Pierce Daniel
Jane Worden Dise
Janet Van Niel Drexler
Dorothy Anne Wallace Droser
Betty French Engan
Joan P. Ernst
Carol Farnum
Jean Conner Ferris
Mary Jean Finnegan
Elaine M. Fischer
Margaret Kall Gugel
Julia Page Hafner
Louise Hediger
Helen Aude Hightower
Jeanette Riley Hunt
Joyce Mann Hursh
Doris Robinson Jones
Nancy Summerhays Jones
Mary Jane Kaiser
Margaret Greene Kindig
Joan Lane
Elizabeth Krihak Lansdale
Elizabeth Jean Larson
Catharine M. Linehan
Theresa Marotta Livingstone
Esther Levering MacMullin
Joan MacLean Mahoney
Mary L. Mitchell
Irene Nowak Nowak
Nancy Farnum O'Dea
Marjorie J. Park
Jane Roberts Pastel
Jean E. Ross
Ruth Bergman Sandler
Emily Reynolds Saunderson
Barbara Winebrenner Shepard
Barbara Stevens Shirey
Shirley Stein Sigel
Margaret Faulkner Sindelar
Irene Schopler Solomon
Elva Yawger Smith
Joy Cohn Starr
Jane Stellwagen
Jean Ross Stonebraker
Patricia A. Spencer
Patricia Kelley Summers
Mildred A. Tausch
Barbara Groth Vasselli
Ernestine Blauw White
Arabelle S. Williams
Phyllis Ludwig Zillman
Joan Taylor Kanwisher

1948—Lily Howland Shalvoy
\$227 56 34%

Margaret Brant Adams
Jean Hall Apetz
Joanne Bailey
Barbara L. Barnett
Estella M. Bassett
Beth Bishop
Bernice Selma Boyarsky
Catherine Bentley Browning
Alice Nemetz Castner

Gloria Oskola Cohen
Lois Cook
Elizabeth G. Costich
Kathryn Sanney Cotner
Mornilva E. Coultts
Ellen Peirce DeWolf
Jane Dibble
Gertrude Neill DuPlessis
Lilian Dyott
Honora North Fairman
Audrey McKissick Fernandez
Joan Fitzgerald
Vera Semanko Grant
Mary Ellen Haller
Pauline Faulkner Handy
Gertrude Melville Hart
Denise E. Hirschfield
Shirley Woodams Hoesterey
Louise A. Hohener
Jean Hunter
Virginia M. King
Sarah Louann Kline
Shirley Knoeckel
Florence Kremer
Joanne Landers
Rose Velie Lanni
Eleanor Lofthouse
Perol J. Montgomery
Beatrice Sayuri Nakahata
Suzanne K. Naruse
Hope N. Ohashi
Edythe Parker Woodruff
Helen M. Parry
Dorothy Rosenberg Passer
Mary K. Proctor
Ruth Ann Rickers
Jean Parsons Ross
Sally R. Seils
Barbara Sites
Jean Rockwell Stanley
Gretchen Thomas
Joan Thurston
Carolyn E. Whitney
Carol L. Wenzel
Janet Bagley Williamson
Gene L. Young
Carolyn Zellner

1949
Jane Mosbrugger Gillem
\$161.75 71 45%

Dorothy Aeschliman
Iva R. Allan
Laura M. Ball
Virginia L. Barrett
Susanne Behrendt
Lois Bennett
Jean Boleracki
Doris Brandt
Louise Madden Brown
Althea Blodgett
Gwen Ingersoll Bush
Nancy Carlyon
Ruth B. Carroll
Kwang Tsung Chou
Margaret Zacheiss Cook
Catherine B. Cowles
Neva Boeckler Curren
Gertrude Ferguson Dunbar
Mona Gray Feinein
Jacqueline Quist Firth
Barbara J. Forbes
June Friedman
Jane Mosbrugger Gillem
Gloria Gerber Goldberg
Irmabeth Good
Muriel E. Guntert
Miriam Harnish
Ruth A. Haswell
Margaret B. Hoff
Marion Levering Hubbard
Beatrice E. Hyman
Catherine Johnson
Joyce Kaiser
Phyllis M. Kroemer
Margery E. Leet
Marietta A. Lombardo
Elsie Shakeshaft Lowney
Margaret A. Luke
Patricia Anne Lynch
Shirley Stevens Miller
Rose Moukous
Shirley Gott Neel
Millicent Price Neese
Jane L. Nelson
Betty J. Neracker

1950 ALUMNAE ANNUAL GIVING FUND CONTRIBUTORS

Fund Manager, Amount, Number of Givers and Per Cent Contributing Shown by Classes

Muriel Nixon
Joan Henner Nolan
Rosemary Drumm O'Neil
Gloria E. Patchen
Arlene E. Peterson
Lynette Relyea
Mary A. Russell
Betty McFadden Schulte
Barbara S. Shear
Gertrude Saperstone Sheinfeld
Rose Mary Shevchuk
Patricia R. Smith
Margaret E. Steinbeck
Elinor S. Stone
Evelyn Vock Sturge
Juliet P. Tillema
Phyllis Van de Walle
Jean Somers Walter
Ruth I. Weaver
Elizabeth Evans Wheeler
Jean G. White
Carol Lendrim Willems
Lois Kuchman Williams
Jean Wright
Delores J. Zackheim
Arlene M. Zimmer

SPECIAL GIFTS

\$105 3
Buffalo Chapter
Emma B. Sweet
Augusta Laney Hoeing

MEDICAL SCHOOL ALUMNAE

\$285 36
Chairman: Dr. Ruth Oakley

1929

Edith E. Emerson

1930

Jane F. O'Neil

1931

Norma Bloor Bowles
Grace Loveland

1934

Frieda S. Robbins

1935

Antoinette Rose Parry

1936

Jean Watkeys Gardner

1938

Jean C. Sabine

1939

Janet B. Davies
Mary Steichen

1940

Mary G. Ritchey

1941

Eleanor Nicholson Humphrey
Valeska Rosiskey Klitgord
Ruth P. Oakley

1942

Rachel Rice Sandrock
E. Margaret Sullivan

1943

Priscilla Cummings
Helen E. Van Alstine

1944

Mary Jane Bird
Patricia M. Clark

1945

Muriel Relman Benton
Anne Fayerweather Emmel
Priscilla Foote Oliver

1946

Eleanor A. Woodbury

1947

Marylou Ingram Mason
Louise Huston Ormond
Edith Searles Porter

1948

Lucille McMahon Heggeness
Jean B. Peters
Ruth Titsworth Rogers

1949

Lillian Baum Tenney
Hendrika B. Cantwell
Evelyn Eddy
Virginia M. Edwards Till
Alma K. Leong
Ruth S. Gosselin

GRADUATE SCHOOL
\$69 15
Chairman: Lucile Bowen

1936

Lucile Bowen

1938

Mary A. Sheehan

1943

Eleanor Page Bowen
Virginia Hoyt Jones

1944

Isabel H. Dill
Helen Rydquest Moseley
Dorothy Rathmann

1946

Julia Lobotsky
Agnes G. Adam

1949

Hattie Gottlieb Bradlow
Margaret Jane King
Christine K. Schamel
Helen P. Thompson
Mary H. Zeller

1950

Catherine Schantz

UNIVERSITY EXTENSION SCHOOL
\$516 122
Chairman: Jane Cameron

1922

Eva Rudman Sherman

1923

Rose E. Sutter

1924

E. Helen MacLachlan
Ethel M. Manchester
Maude I. West

1925

Ethel Humphrey

1926

Ethel L. Newman
Mary Lutz Ordway
Bessie Walbridge

1927

Ethel M. Dunn
Franc Abbey Ebray

1928

Irene Meyn
Bertha R. Owen
Irene Quinn
Jessie H. Sickels
Grace J. Tanner
Dorothy Voss

1929

Lelia H. Ashley
Marie Ball
Mabel Beach Banning
Elizabeth M. Brown
Jane Cameron
Mary Caragher
Florence B. Cook
Truby L. Henry
Hazel Johnson
Elizabeth Middaugh
Anna G. Schafer
Gertrude Frey Brown

1930

Ruth Young Bentley
Ruth Dixon
Luella Hovey Gann
Villa J. Hopkins
Ida Kierzrock
Martha Middaugh
Irene Murphy

1931

Ida Campbell
Helen Donnellan
Elma Gormel Garlock
Emma O'Keefe
Mary Quinn
Florence M. Redding
Kathleen B. Rudolf
Carrie Sonderman
Minerva Warner Tellier
Cora Weeks

1932

Helen C. Addicott
Emma DeLaney
Clara Leeper
Anna Morrow
Mabel B. Pooler
Margaret Powell
Marian Smith
Marguerite L. Tyler
Mary Ella Wright

1933

Julia Arnott
Mabel Crellin
Bertha Cuyler
Gertrude Wright

1934

Minnie A. Booth
Helen Cashman
Ethel M. Collier
Hazel Cox
Grace Line
Emily W. McKibbin
Helen Pettengill
Florence Clark Pitts
Lucille Reuschle
Helen Corbett Ritz
Helene Clark Robinson
Anna Thompson
Florence Metz Wuerges

1935

Esther A. Dunn
Mildred Ehaney
Catherine Mathews Frank
Elsie Greffrath
Mildred L. Potter
Florence Beal Ramph
Edna Schaich
Lorette C. Schefinger

1936

Clara G. Albert
Edith B. Colman
Nellie McLane
Elizabeth Schwartz

1937

Esther Leah Averill
Frieda B. Hanf
Ruth Clark Huntington
Florence Wood Lawton
Lucile Soule Sherwood
Frances M. Smith
Corothea Small Taylor
Dlara G. Walker
Madeline M. Weaver
Mary A. Westbrook
Jennie Evershed Zuck

1938

Marjorie Bent Bald
Kathryn Parker Harvey

1939

C. Lucile Carter
Elizabeth MacGovern Santee

1940

S. Lina Bateman
Ruth Andrews Harmer

1941

Alma Eudora Haessig
Anna Forsay Mohan
Regine Seidler

1942

Laura M. Brown
Irene L. Follette

1943

Marguerite G. Colgan
Sophia W. Greffrath

1944

Clotida M. Cerasani

1946

Josephine Kelly Craytor
Frances Q. Pollard

1947

Margaret L. Geyer
Anna McCulloch

1948

Norma Di Lauro
Marion L. Paduano

1949

Sofia M. D'Andreano
Florence Kunes
Charlotte McKeon
Florence McKerrow
Mary E. Miller
Harriette Lord Paddleford
Dorothy Tripp

YOUR CLASSMATES

College for Men

1888

Professor Emeritus *Warren Stone Gordis* wrote a very interesting letter regretting that he could not attend Homecoming. He said, "Let me tell you about the joke fate played on me last summer. At the Centennial Celebration, it was reported that the earliest graduate present was of the Class of '89. I graduated in '88 and was in Rochester at the time of the celebration, but was a patient in Highland Hospital! Since 1946 my status has been Professor Emeritus (John B. Stetson University) of Greek, although much of my work has been in the field of English. The alumni seem to consider me a sort of museum specimen since I joined the faculty in 1888 immediately upon graduation only five years after its beginning—with one teacher." Professor Gordis resides at 642 N. Hayden Ave., DeLand, Florida.

1894

The Rev. Irving N. DePuy, D.D. retired from the active pastorate of Linden Avenue Baptist Church, Dayton, Ohio, in September, 1949, after 53 years as a Baptist pastor. He is now engaged in supply work and conducting Bible classes. He has just written the history of Ohio Baptists for the State Convention. The Rev. Mr. DePuy lives at 1100 Carlisle Ave., Dayton, Ohio.

1913

James M. Spinning, superintendent of Rochester public schools, has been appointed to a three-year term on the advisory council of the American Association of School Administrators, it was announced in Washington, D.C. He will represent New York State on the council.

1916

After many years of government service, *Joshua Bernhardt* is now self-employed as a consultant in Washington, D.C. He was chief, Sugar Branch, War Food Administration during the war and U.S. member of the Combined Food Board Sugar Committee and successor organizations from 1943 until the end of the war and post-war adjustment

(1947). His home is in Chevy Chase, Md., at 2800 Brookville Rd. He has a son, Max, a junior at the UR.

1921

Charles Hedley is "the hardest working man for miles around" in the summer in Indianapolis according to a "typewriter portrait" by Corbin Patrick in the *Indianapolis Sunday Star*. Charles is producer-director of the Starlight Musicals of the Indianapolis Theatre Association, where in the summer he has the job of putting a new show on the stage of the State Fairgrounds each Tuesday night of the four-week season. He produced "The Great Waltz" to finish last season's program. After graduating from the UR, Charles taught English at West High before joining the American Opera Co. He had tenor leads in many productions including *Madame Butterfly* and *The Student Prince*. The prospects of a more settled life drew him back to teaching and he became chairman of the voice faculty at the Kansas City Conservatory, before going to the Arthur Jordan Conservatory in Indianapolis in 1939, where he remained until last year when he opened his own voice studio. The stage had always interested him, and he was not long in combining his interests by his affiliation with the Starlight Musicals. Charles lives in the Meadowbrook Apartments in Indianapolis with his wife, Sally, and their four-year old son, Dean.

1922

Charles Potter is the new general manager of the Indiana Bell Telephone Company in Indianapolis, Ind. He resides at 240 North Meridian St., Indianapolis.

1924

Dr. Lemoyne C. Kelly was one of the official representatives of the United States at the International Congress of Internal Medicine which convened in September in the Facultie de Median in Paris. There were delegates from 37 countries in attendance.

1925

Earl Hilfiker has an interesting vocation in making personal appearances with his color motion pictures on "The World Of The Out-of-Doors". After graduating from the UR, he was a science teacher for several years, then held a position with the Rochester

Museum for two years before returning to teaching, this time at Monticello, N.Y. From there he went to Albany where he was motion picture photographer with the New York State Conservation Department. For the past five years he has been "talking the world out of a living" by showing his films. The titles of some of his films sound as if they would make fascinating topics, for example: "Saga of the Swamplands", "The Rabbit that Runs on Snowshoes" and "Quebec Wilderness Country".

1926

Bob Gordon, who spent many years in the Far East writes from Switzerland that "Scotland was wonderful, England is drab, and uninspired". Before he sailed, he met his fraternity brother, Hal Suttle, also UR '26, ex-star athlete, who served in World War II as a full colonel in the Air Force and may rejoin soon.

1927

Eric Sitzenstatter has a new position as assistant manager for sales in the Dallas, Tex., branch of Eastman Kodak Company. He had been in Manila, Tokyo, and Shanghai for the years between graduation and 1948, when he came back to San Francisco. His address is now 6300 Cedar Springs Ave., Dallas, Tex.

1930

Dr. Richard Roblin Jr., director of the chemotherapy division of the American Cyanamid Co., Stamford, Conn., has been elected 1951 chairman of the American Chemical Society's Division of Medicinal Chemistry. After graduating from the University of Rochester, he obtained his M.A. degree in 1931 and his Ph.D. in 1934 from Columbia University. He also studied at the University of Munich, Germany, and at M.I.T. He joined American Cyanamid Co. as research chemist in 1934 and was named to his present position in 1942. Dr. Roblin is associate editor of the "Journal of Immunology, Virus Diseases, and Chemotherapy." He served as a civilian with the Office of Scientific Research and Development during the war.

1931

The Rev. Renato G. Alden is now pastor of West Avenue Presbyterian Church, 104 West Ferry St., Buffalo, N.Y.

Robert Kazmayer, political and economic observer, recently completed a lecture tour, his subject being "The Challenge That Is America". After finishing at the UR, Robert studied for the ministry at the Colgate-Rochester Divinity School. He is a former president of the Commerce Club of the Rochester Chamber of Commerce and for two years was moderator of the Rochester "Town Hall of the Air". He initiated his annual Kazmayer European Seminar Tours in 1947 in company with publishers and businessmen from all over the United States. He was studying political and economic conditions in Europe at the outbreak of World War II and returned to Europe at the end of the war. Since 1945 he has made five fact-finding trips abroad to gain knowledge of world affairs. He has lectured in England, Canada, France, Mexico, as well as in the United States, and is the author of "Out of the Clouds", a book dealing with the postwar world.

1932

Michael Mavrides writes from Greece that he is in better health now and expects to go to Salonika soon, "where with the assistance of Bruce Lansdale, '46, I hope to secure a position." Mickey's address is 58 Skra Street, Drama, Greece, and he would like to hear from his old friends.

1933

Donald S. Frost has resigned as assistant advertising manager of Bristol-Myers Co. to join the Compton Advertising Agency, New York, as account executive.

Jack Houseknecht recently joined the William Esty Advertising Agency in New York, in the television stations relations department. He was formerly with the Compton Advertising Agency and vice-president of Station WVET in Rochester.

The Rev. Robert I. Howland has been appointed to serve the Church of Christ, Congregational Christian, at Millis, Mass., where his address is 151 Exchange Street. He was formerly with the Essex Parish Cooperating Churches at Essex, N.Y.

1934

Whitney R. Cross is assistant professor of history at West Virginia University, Morgantown, W. Va. His book "The Burned-over District: The Social

and Intellectual History of Enthusiastic Religion in Western New York, 1800-1850" was published in October by Cornell University Press. Whitney received his M.A. at the UR in 1936 and his Ph.D. at Harvard in 1945 before joining the faculty at West Virginia in 1949.

Everett J. Mann has accepted a position on the Duke University faculty as associate professor in the economic and accounting department. After receiving his A.B. from the UR, Everett studied for his M.B.A. degree at the University of Michigan. He is a certified public accountant in New York State where he has his own professional accounting practice. He is a member of the American Institute of Public Accountants and the National Honorary Fraternity, Beta Alpha Psi. Before going to Duke University in September, he taught for five years at the University of Rochester.

Robert Trayhern, assistant to the Dean of the College for Men, UR, and Mrs. Trayhern announce the birth of a daughter, Laurie, on September 18. The Trayherns reside at 7 Appleton St., Rochester.

1935

Kenneth McConnell is associated with the University of Texas this year, in the Medical School, Department of Biochemistry and Nutrition.

1936

Dr. Gilbert Forbes has been appointed professor of pediatrics at Southwestern Medical College in Dallas, Texas. He was formerly associate professor of pediatrics at Washington University School of Medicine and a member of the St. Louis Children's Hospital staff, having joined the faculty there in 1942. Dr. Forbes received his M.D. from the University of Rochester School of Medicine and Dentistry in 1940.

1937

Robert Babcock was elected last fall to the State Senate of Vermont. He writes, "I did it only because I was distressed by the fact that Sam Stratton was getting ahead of me. Some of my radical friends may be surprised to learn that I ran on the Republican ticket. Please tell them that Vermont is 49% Republican and 51% cows. In a losing race to catch up with Shelly and Pinky Reed, we expect number four

this winter. Our others now refer to me as "your honorable"; my wife has different sentiments, leaving her here alone in the country while I go to the high life of Montpelier." The Babcocks' address is RD 1, Five Acres, Burlington, Vt.

1938

William Buxton, recalled to active duty by the Army Reserve and stationed in Washington, D.C., has moved his family to Arlington, Va., where they reside at 1717 S. Taylor St. Mrs. Buxton is the former Anne Taylor, an alumna of the Women's College. They have two children, a boy and a girl. Bill was a space salesman for the *New Yorker* magazine and lived in Evanston, Ill., before he re-donned his captain's uniform November 1.

Robert B. Cantrick has just been named South Carolina state chairman of the American Symphony Orchestra League. He is a composer and assistant professor of music at Furman University and also the founder and conductor of the Greenville (S. C.) Symphony Orchestra. In his new position, Bob will serve as advisor and consultant to community and college orchestras throughout South Carolina. After graduating cum laude from the UR, he served as a bandleader in General Patton's Third Army during World War II. He received his master's degree from the UR in 1946 and has also taken graduate work at Harvard and Julliard School. During the past summer, Bob studied with the famous composer, Jacques Ibert. Bob's Sonata for Flute and Piano was performed during the annual composer's conference at the Berkshire Music Center.

Dudley Cornish has been appointed assistant professor in the social science department at Kansas State Teachers College, Pittsburgh, Kan. He received his master's and doctor of philosophy degrees from the University of Colorado. He has taught at the UR and was graduate assistant at the University of Colorado before receiving his present appointment.

1939

John Forbes recently completed the final requirements for his doctor's degree. He is professor of political science at Blackburn College, Carlinville, Ill. His degree is in the field of American civilization and was awarded by the University of Pennsylvania.

Leo Summermater and Mrs. Summermater, the former Helen Baybutt, Women's College, announce the birth of a son, Richard, on November 14, 1950. The Summermaters live at 70 Goodwill St., Rochester.

1940

Dr. John E. Baybutt and Mrs. Baybutt have a new daughter, Betsy Ann, born in May 1950. John is a pediatrician practicing in Easton, Md. He received his medical school training at Syracuse and Johns Hopkins.

Bob Frazer is vice-president and chief engineer of the Pacific Universal Products Corporation in Pasadena, Calif. His address is 168 Vista Avenue, Pasadena. The firm does high vacuum coating.

1941

Emerson Chapin is spending a year at University College, London. He and Mrs. Chapin, (Ruth Hudak '45) have a "very satisfactory house" just outside London. Their address is Beechcroft, Woodmansterne Lane, Barnstead, Surrey, England. Emerson writes: "I think our little daughter, Ruth, can lay claim to being the most travelled future Rochesterian of her age group. Born in Tokyo, she now at 14 months has crossed both the Atlantic and Pacific and has lived in or just outside each of the three largest cities in the world."

1942

John M. Newell married Mary Constance Marshall of Falls Village, Conn., in September. The bride attended Simmons College and the Columbia University School of Occupational Therapy. The couple spent their honeymoon in Nantucket and are now residing in Rochester. John is in the accounting department of Rochester Gas and Electric.

1943

Richard N. Close is associated with the Radar Section at Airborne Instruments Laboratory, Mineola, N. Y., as assistant supervisor. He was formerly a project engineer for the same company before receiving his new appointment. His address is 39 Beatrice Court, Hempstead, L. I.

Two members of the class were admitted to the New York State Bar recently: *John Fiorca* of 231 Child St., and *Richard Secrest* of 103 Landon Pkwy. Dick is associated with Strang,

Bodine, Wright and Combs in Rochester. He received his law degree at Michigan Law School and is a Navy veteran. John received his L.L.D. at Buffalo Law School and is associated with Attorney Julius H. Michaels.

1944

Dr. Wallace Font married Miss Jean E. Quirk in October. The bride is a graduate of St. Mary's Hospital school of Nursing. Dr. Font received his M.D. from Marquette University Medical School and is now resident pediatrician at St. Vincent's Hospital, Staten Island.

J. William Gavett is taking eight hours of academic work at Cornell working for his master's degree and possibly will tackle a Ph.D. He is also carrying a full teaching load in industrial engineering, teaching Sunday School and doing some methods engineering for a local hospital, all of which seems somehow to keep Bill pretty busy.

Jack Keil married Miss Barbara Louise Miller in Norwood, N. J., in September. They honeymooned in Bermuda and now live at 240 West 4th St., New York City. Jack is with the Wendell P. Colton Advertising Agency.

Another wedding for the class was on November 11 when *Robert Marks* married Barbara Wickenden, a UR alumna. After a wedding trip to New York City, the couple is at home at the Elmwood Apartments, Rochester. Bob is assistant plant manager at the Superba Cravats Company in Rochester.

Marshall Waingrow married in July, his bride being the former Sara Hope Graff of Kittanning, Pa. The wedding took place in New Haven, Conn. Sara is an alumna of Cornell and was a graduate assistant at the Pennsylvania State College in the English Department, where she is a candidate for the master of arts. Marshall is on leave from the faculty of Penn State, where he is an instructor in English literature. He is completing his doctoral dissertation at Yale University.

1945

Henry VanNess and Virginia Crider were married in October in Rochester. Mrs. VanNess is an alumna of Tarkio College and Henry is a graduate student at Yale University. They spent their honeymoon at Williamsburg, Va., and now reside at 11 Lake Pl., New Haven, Conn.

1946

John Phillips and Mrs. Phillips, the former Alice Holmes, '48, announce the birth of a son, Robert, born Thanksgiving Day. The Phillips live at 70 Madker Dr., Rochester. John is employed by Rochester Products along with many other recent UR graduates, including C. I. Prince, Jack Fleckenstein, Bars Nally, Don Beach, Kirk Howland and Frank Phillips.

The marriage of Resha Levine and *Lenoard Sayles* took place in October. Mrs. Sayles, who attended Alfred University, is a member of the teaching staff of Memorial Art Gallery, Rochester. Leonard received his Ph.D. from MIT. He is on the faculty of Cornell University.

1947

Michael J. Esposito wrote in October from the Far East where he is on duty aboard the hospital ship *Consolation*. Michael is a Lt. j.g. (MC). He attended Boston University School of Medicine and received his M.D. in 1949. Shortly thereafter he married Miss Pauline Chivarine of Framingham, Mass. Last July he completed a rotating internship at St. Albans Naval Hospital, St. Albans, N. Y.

Robert Kaman married Miss Judith Rappaport of Whitney Point, N. Y., on October 1. The bride was graduated from The Holmquist School, New Hope, Pa., and attended Wells College. Robert is a graduate of Cornell Law School, having received his LL.D. in 1950.

Miss Constance Lucia was married on Thanksgiving Day to *Sam Pozzanghera*. The bride is a graduate of St. Mary's Commercial School.

1948

Norm Levin is in the engineering department of Burke Steel Co., Rochester, N. Y.

Phil Peterson and Mrs. Peterson have announced the birth of a son, Phil Jr., born November 27. Phil Sr. is in the technical service, Medical Division of Eastman Kodak Company in Schenectady. The Petersons' address is Apt. B-12, Sheridan Village, Schenectady, N. Y.

Robert Rosborough was married in November. The bride was Miss Eleanor Ide and the wedding took place in the chapel of the Colgate-Rochester Divinity School, with a reception at the Delta Upsilon house. The bride attended

Lebanon Valley College, Annville, Pa. The Rosboroughs reside at 296 Clay Ave., Rochester. Bob is a quality control engineer at Eastman Kodak Co.

Another '48 wedding this fall was that of *Thomas M. Springer* and Joan McGrath, in September. Tom is studying for his master's degree at the University of Buffalo.

Roger Thielking is employed at the General Electric, Electronic Park Plant in Syracuse, and so is Al Cooper, '50. Recent UR graduates working for GE in Schenectady are *Jim Stafford*, '49; *Dick Saunders*, '47; *Bob Currie*, '48; *Hal Baxter*, '50, and *Dean Arlidge*, '50.

Roland Wheele married Miss Arlene Geiger of Akron, Ohio in October. The wedding took place in Akron, where the couple now live.

1949

E. Payson Clark Jr. graduated from Cornell Law School in June and is now associated with law firm of Mudge, Stern, Williams and Tucker, 40 Wall St., New York City.

Martyn Cominsky married Lois Joseph in October. The couple spent their honeymoon in the Catskills and now reside in Niagara Falls.

Five sisters of the bride were her attendants when Gemma Donatelli was married in September to *Edward Corsetti*. After graduating with a B.S. in mechanical engineering, Edward was a project engineer with The National Advisory Committee for Aeronautics at the Cleveland Airport, Cleveland, Ohio.

John Cannard is doing graduate work at the University of North Carolina.

George Dischinger and his wife, Bette, announce the birth of a daughter, Susan, on October 6. The Dischingers have been living on a beautiful peach farm in Youngstown, N. Y., but George has his orders to return to active duty with the USMC on January 2. After that date, Bette and Susan will be at 56 Meigs St., Rochester, and George will be at Quantico, Va.

Mr. and Mrs. Richard Eden announce the birth of a son, Dick Jr., born November 26. Dick Sr. is a member of the faculty and coach at Spencerport High School. The Edens live at 279 S. Union St., Spencerport, N. Y.

Jack Fleckenstein and Ann Marie Dertinger were married in October at St. Thomas Church in Rochester, with a reception at the DKE House on the River Campus. The bride is a graduate of Cazenovia Junior College.

Alan J. Frick married Mary Eva Marshall, '48, in October. After a motor trip to Washington, and Virginia, the couple reside at 126 Plymouth Ave. S., Rochester.

Jim Gosnell Jr. was born December 14 to *Mr. and Mrs. Arthur James Gosnell* of Hartford, Conn. Jim Sr. works for Miles, Dement and Pond, a branch of Pratt and Whitney there.

Stan Hamilton writes from Kansas City, Mo. that that he is taking graduate work at the University of Kansas City at night, majoring in economics. He thinks Kansas City is the most beautiful city he has seen yet, "with lots of parks and boulevards laid out by America's outstanding city planner, J. C. Nichols." The only regret Stan has is the lack of any college football in Kansas City. He and *Don Beattie*, now located in St. Louis plan to get together out there. Stan's address is 8231 Forest Ave., Kansas City, Mo.

Francis J. Hone was one of eleven Brighton men in the First Draft from Board 76. After graduating from the UR, Francis was employed by Eastman Kodak as a physicist in the Research Laboratory at Kodak Park. His address was 43 Kent Pk., Rochester, before he left in September for Fort Devens to receive further assignment. Another member of the class now in service is *James Pelton*, whose current address is Fort Dix, N. J. He was formerly a salesman for Liberty Mutual Insurance Co. in New York City and lived at 160 Summit Ave., Summit, N. J., but in October he became Pvt. James Pelton, US 51024594, Service Btry., 84th FA Bn. Fort Dix, N. J.

Welton McDonald is studying for his Ph.D. in sociology at the University of North Carolina. His address is 95A Pittsboro Rd., Tr. Ct., Chapel Hill, N. C.

Gus Miale is working for a master of science degree at Brown University and has been accepted at the Medical School at the University of Rochester. He has been teaching in the Department of Biology at Brown.

Marge and *Howie Rupert* announce the birth of a daughter, Sandra Colette, on November 14. Howie is assistant purchasing agent for Wright Manufacturing Co., Houston, Tex. The Ruperts live at 3420 Purdue Street, Apt. 1, Houston.

David Nast and Mary Jane Cappelino were married in September in the Lutheran Church of the Reformation,

Rochester, with a reception at the DAR Chapter House. The bride is a graduate of the Albright Art School and Buffalo State Teachers College and is supervisor of art at Homer Central School. David is now doing graduate work at Cornell.

Herb Wood now has a position with Home Life Insurance Co., Rochester, N. Y., as a field underwriter. Herb has been with the same company as a planning manager for the past year. He has three sons, Herb II, 5; Allan, 2; and John I. The Woods live in Pittsford, N. Y.

1950

Mr. and Mrs. Hugh Albee announced the birth of their son, David Charles, born November 5. Mrs. Albee is the former Jane Harding, '48. The Albees live at 45 Meadowbrook Rd., Rochester.

Richard Ballarian is assistant navigator aboard the USS Roanoke (CL-145), c/o FPO New York City. Dick also has charge of the ship's photography.

Clark Barrett writes that he is standing up under the strain of Harvard Law School "though to put it mildly, the work is quite a bit heavier than at the good ol UR."

Edward S. Brown is working for General Railway Signal Company in Rochester and lives at 130 Lattimore Rd. Ed and *Nick Lazar* spent the summer working on the cyclotron at the UR. Nick is now employed by Corning Glass Company, Corning, N. Y.

John W. Clark is in concert management in New York City. He resides at 40 East 64th St., New York, N. Y.

Robert DeLelyes has accepted a position with General Electric Company in Schenectady, N. Y. The DeLelys's have a new son, born in September. They reside at 1021 Argo Blvd., Schenectady.

Bill Dodenhoff is now in New York as a management trainee in the Pepsodent Division of Lever Bros. He and Shirley have got together with the Glen Bassetts, and Bill has also run into Fritz Ostendorf, who is located in Harrisburg, Pa. Also Jerry and Jinx Crouch visited them while on their honeymoon. Bill's address is 35-71 89th St., Jackson Heights, N. Y.

Homer Figler is now a graduate student at the University of Maryland where he is doing work for his M.A. and Ph.D. in psychology. His address is 4550 Wells Pkwy., Riverdale, Md.

Bob Greenfield has been recalled to active duty by the Army Reserve and

after having spent some weeks at Fort Hood, Texas, is now overseas. His address is ER 42026958, Prov. Co., 187, APO 613, C/O Postmaster, San Francisco.

Charles Handy wrote from aboard the USS Worcester in Tokyo Bay in October. Chuck is in the engineering department and in training for officer of the watch in main engine control and B division junior officer. His ship provided anti-aircraft coverage in the landing on Inchon and later rescued the destroyer Brush which had been hit by a mine and provided her with enough damage-control equipment to save the ship. Chuck hoped to be home by December 10 and had a very important reason — Barbara Horton, whom he plans to marry when he gets home. Barbara attended the School of Nursing at Strong Memorial and is now working in the Veterans Hospital, Bath, N. Y.

Richard Harris and Helen Lewis were wed in September at the home of the bride in Rochester. Helen is a graduate of Penn Hall Junior College.

Robert Madden married Ingrid Persson in September in a ceremony held at the Alpha Delta Phi House on the River Campus. The couple live in Baltimore where the bride is attending Goucher College and Bob is attending Johns Hopkins Graduate School of Physics.

Martie Messinger is now working for Messinger Co., Rochester, after having spent the summer in Europe. Martie traveled through England, France, Italy, Holland and Austria. He spent some time with *Eugene Kurtz*, '47, who is composing in Paris. Gene's address is c/o Verdier, 43 Rue Blanche, Paris, France. In Holland, Martie visited *Arnie Van der Lande*, '50. Arnie is working for his family in a pharmaceutical company. He is putting his business ad training to good effect by aiding in the establishment of a sales office of the corporation in Brussels, Belgium. Martie received his master's degree in business administration at Columbia in June and is currently awaiting a call from the US Army.

Arthur Principe has a position with Westinghouse Electric Supply Company in Rochester, N. Y. He resides at 223 Linden St.

Russell Reed Jr. and Jean Caroline Strobridge were married in October in Genesee Baptist Church, Rochester, followed by a reception in the church parlors. Jean attended Rochester School of

Commerce. The Reeds live at 224 Elliott St.

Robert Schwind is studying at the University of Munich, working toward a doctor's degree with concentration in modern European history. His address is Munchen 27 Poschingerstr 5, Bayern, West Germany.

John W. Sherwood is employed by Carter Carburetor Corporation in St. Louis, Mo. He is in the production engineering department. His address is 3821 Lawler Dr., St. Louis 20, Mo.

George Tully is a medical student at the UR School of Medicine and Dentistry. He lives at 145 Crittenden Blvd.

Jack Welter has a position with the National Broadcasting Company in New York City. He resides at 45 W. 47th St., Bayonne, N. J.

LETTERS TO THE EDITOR

To the Editor:

The new President looks good. I like his stress on the humanities. That includes football and basketball. During the season, my 72-year-old eyes and ears strain to get the weekend reports on Rochester's scores. Here in the sticks and far away I am not always rewarded. When the voice of radio does say "Rochester", or the finest print in the newspaper carries that name I am thrilled.

Yours,
R. E. Zachert, '01
Cuthbert, Georgia

YOUR CLASSMATES

Alumnae

1905

Gertrude Salisbury Craigie is living with her sister, *Marian Salisbury Anthony*, '08, at 125 Hillcrest Ave., State College, Pa.

Florence Levis Fisher spent a week in Philadelphia as the guest of her daughter, *Peggy Fisher Schultz*, '32, enroute to Sarasota, Fla., where she spent several winter months.

Hallie I. Shearer is the director of Webster Medical Library in Evanston Hospital, Evanston, Ill.

1906

Lillian Crafts is spending the winter in Jacksonville, Fla.

Also enjoying the Florida sun this winter is *Elinor Lawless*.

1907

After years of helpful service to hundreds of girls, *Ethel Rogers* has retired as counselor from the William Penn High School of Philadelphia and is now spending some time with her sister, *Helen Rogers Cross*, '05, of Audubon St., Rochester.

1910

The class extends its sympathy to *Frances Slayton Marble* in the loss of her husband, George M. Marble, who died on Sept. 21, 1950.

1912

On her way to California this past summer, *Adelaide Dodds Larkin* visited many of the national parks and other places of interest.

Edith Barker Swigert and her husband traveled through the Canadian Rockies last summer and on their way east, stopped to see the Toronto Exhibition.

The class sends its sympathy to *Zetta Doolittle Thatcher* whose husband, Richard P. Thatcher, died in October.

Annual Christmas luncheon of the class was held December 30 at the home of *Marguerite Castle*.

1915

Members of the class extend their sympathy to *Winifred Edwards Cleland*, whose mother died recently.

1919

Marion Henckell Levering became a grandmother when her daughter, *Marion Levering Hubbard*, '49, gave birth to Barbara Louise on October 24 in Burlingame, Calif.

1923

Avis Johnson Oelhbeck visited Rochester this fall from her home in Morgantown, N. C.

Violet Jackling Somers' daughter, Ann Jackling, was married in October to Bernard Weiss. Ann is a senior at the UR, while her husband is working for his doctorate in psychology at the University.

1924

Catherine Klem Martin attended the White House Mid-century Conference on Children and Youth, December 3-7.

The class had a very successful booth at the Fall Festival in October which netted \$27.40. Potholders and other handmade articles were featured.

1928

Sympathy of the class is extended to *Mabel McOuat Mann* on the death of her father last fall.

Ines D' Amanda Barnell moved into her new home on Highland Avenue the first of the year.

1929

In December, *Evelyn Sheehan Kaul* and her husband enjoyed a trip to Bermuda and Nassau which her husband won through a sales contest held by his company.

1931

Bertha Brewer Ferguson, her husband and small son came east as far as Washington, D. C. last summer from their home in Dallas, Tex.

Gene Patterson Tanner is living in Silver Springs, Md., with her husband and two small sons, Donny, 7, and Freddy, 3. Gene is very active in the Washington Alumnae Chapter.

The class extends its sympathy to *Marie Freer Porter* whose mother died recently.

Edith Bork King of Los Alamos has become interested in painting and writes that she had her first and very successful "one-man show" at the State Art Gallery in Sante Fe last spring.

1937

Elizabeth von Wiegand Anderson was hostess to 14 members of the class in October at her new Swiss chalet-type home on Fairport Road.

Louise Morgan Burke and her husband have built a new home in Silver Springs, Md.

Sally Bascom was married on October 11 to Norman B. Terhune.

Eleanor Martin Van Cassele and her husband welcomed a new member into their home in Webster on June 21. Their son's name is Charles Raymond.

After spending several years working in Washington, D. C. and New York City, *Sylvia Black* has returned to Rochester to do research in the county historian's office.

1938

Announcement has been made of the marriage of *Lucinda Hazen* to Henry Norris Whitney of Glen Cove, L. I. The wedding took place December 22 at Delray Beach, Fla. Lucinda is executive director of the Citizens Committee for United Nations Reform, New York City.

The marriage of *Rosemary Seiler* to Jack Irving Terry took place October 21 in the Chapel of Colgate-Rochester Divinity School.

1939

Rosalie Scinta's engagement to Joseph A. Gioia has been announced. Her fiance is a graduate of Cornell.

Helen Baybutt Summermatter and her husband, Leo, have a new son, Richard, born November 14. The Summermatters are living at 70 Goodwill St., Rochester.

1940

Anna Sinclair Mehdevi, who has been in Paris and Vienna for the past two years, is going back to France for study.

Fred and *Esther Teller Swamer* have announced the birth of their daughter, Lynne Adelle, born in September in Durham, N. C., where Fred is a research chemist for DuPont.

John Freeman Skivington, born in November, has made it a total of four boys for George and *Jane Hughes Skivington*, of Burrell Road, Scottsville.

Doris Prouty Benard of Winton Rd. South, Rochester, has a second daughter, born in November.

Phyllis Probst Johnson recently moved into her new home on Inwood Drive, Rochester.

Sheila O'Brien Holler has moved back to Rochester from Bradford, Pa. and is living in her new home on Shoreham Drive.

1941

Helen Shakeshaft Togailas and Pete spent eight months in Bergen, Norway, last year, while Pete was on a business trip for Distillation Products. While there, they took a month's vacation, visiting Paris, Nice, Amsterdam, Hamburg, Geneva, Copenhagen, and Stockholm.

Ruth Schmidt Schalin announced the arrival of a son, Keith Alan, on October 20.

The class entertained their children at a very successful Christmas party on December 16. *Mary Esmond Taylor* and *Carol McGregor Plass* were co-chairmen.

1942

Mary Cameron Vogt is studying at the University of Glasgow, Scotland, this year.

Ruth Chapin Koomen's new address is Beechcroft, Woodmansterne Lane, Brnstead, Surrey, England.

Robert and *Charlotte Willey Bergman* of North Syracuse have announced the birth of their son Robert Alan on October 2. Robert has an older sister, Janet.

Two daughters were born to members of the class an hour apart. On November 15, Margaret Emma was born to Russell and *Marcella Pugh Matheus* and Karen Elizabeth to John and *Madlyn Horacek Evans*. Marcella and Madlyn shared the same room at Strong Memorial Hospital.

1944

Richard and *Anne Salter Dunlap* have announced that their son, John, 3½, has a new baby sister, Hope, born November 22 at Newport Hospital, Rhode Island.

Alice Reilly became the bride of Frederick Jerome McGarry a graduate of Middlebury College and M.I.T., on October 7 in Rochester. The McGarrys are making their home in Rutland, Vt.

The engagement of *Jane Post* to Courtland Wald Young has been announced. Mr. Young is a graduate of Dartmouth College and received master's degrees from Tuck School of Business and Thayer School of Engineering. Jane has been employed by the Welcome Wagon in Rochester.

The wedding of *Betty Ann Giles* to Irwin Booth took place December 27 in Colgate-Rochester Divinity School. *Barbara Schreib Schick*, '43, was Betty's matron of honor.

1945

Margaret Wynn has resigned her position with United Press in Buffalo to work for the Buffalo Evening News.

Paul Rohrdanz, Jr. was born to *Sally Ingalls Rohrdanz* and her husband, August 17. They are living in East Aurora.

David and *Madge Rowe Raab* have a new daughter, Deborah, born September 16 in Brooklyn.

Roslyn Greenberg Kaiser and her husband, Jerome, have announced the birth of their daughter, Sarah Elizabeth on November 4. The Kaisers are living in New York City.

Gloria Perryman Shambroom and Bill of Teaneck, N. J., are the parents of a son, Donald Henry, born December 1. Don's brother, David, is 2.

1946

Marian Ragan has been appointed to the faculty of Wheaton College, Norton, Mass. as an instructor in art. Marian has received her master's degree from Radcliffe College and has been secretary, assistant to the curator, and lecturer at the Albright Art Gallery, Buffalo.

Jean Banta Gohr announces the birth of her son, Jeffrey, on October 6. Jean and her husband Bob are stationed in California.

Mickey Murphy Meade and Pete have a daughter Kathryn, born in September in Rochester. The class extends its sympathy to Mickey on the death of her father.

1947

Dottie Cochran became engaged in October to Robert Shaw, a former Broadway musical comedy star. They will be married this spring. Dottie has been singing with the Angelus Singers of Buffalo who broadcast every Sunday afternoon. She has also had her own women's commentary radio program for two years.

Another engagement is that of *Anne Hall* to Peter Baxter, an engineering student at Tufts College. They will be married when he graduates. Anne is living in South Glastonbury, Conn., where she is in business with her father, distributing household appliances.

Joan Hosking was married in November to James Robert Starkweather of Rush, N. Y.

Rosemarie Fay was married to Ralph W. Loomis on November 26 in Rochester. *Arabelle Williams* and *Bette Larson* were her bridesmaids. Rosemarie's husband is a graduate of the University of Michigan.

Jay Riley Hunt now has two children, William Edward, 2½ years, and Deborah Culver, 7 months. Her husband, Roy, who obtained his Ph.D. in chemistry from the UR in June, '47, is now

assistant manager of the Technical Personnel Division of General Electric.

Esther Levering MacMullin and her husband are living in Houston, Tex., where Bob is flying B-47 jet bombers.

Elaine Burk is working in the dental research laboratory of the University of Illinois.

Betty Adam Mason and her husband are living in Rome, N. Y., where George, a U. S. Army captain, was transferred.

Nern Blaww White's husband, Charles, is back in the Navy and is on sea duty out of Long Beach, Calif.

Percy and *Helen Aude Hightower* announced the arrival of their daughter, Jane Elizabeth, in Rochester on September 7. Jane's sister, Doris, was 2 in August.

It's a girl, too, for Curtis and *Jean Nichols Barber*. Frances was born on August 31 in Austin, Tex.

Susan Moore Pope and Bill had a son in October in Troy, N. Y.

Toni-Ann, daughter of *Shirley Owens Palmer* and Jim, was born in October in Lyons, N. Y. Toni-Ann has an older brother, Jimmy, and sister, Barbara.

Marjorie Schreib Combs and her two daughters, Susan, born November 3, and Mary Katherine, 15 months old, have left for North Carolina to join Marjorie's husband who is stationed there.

Margie Greene Kindig and Ed have another son, Mark Griswold, born November 16.

Married last summer, Alan and *Jackie Hitchcock Wright* are living in Greenwich Village, New York City.

Also in the Village are *Pat Hawker Ginna* and Bob, who is curator of modern art in Newark, N. J.

Josephine de Frank Kramer and Richard became the parents of a son, Marcus Neil, July 5 in Bloomington, Ind.

1948

The engagement of *Mary Anne Kennedy* to Robert C. Angell, a senior at the UR, was announced recently. Mary Anne received her A.M. in zoology from Columbia University and spent a year in psychosomatic medical research at Cornell University Medical College. She is now working with the Atomic Energy Project.

Nilva Coultts became engaged in November to Frederick Viken, a graduate of the University of Wisconsin and the Art Center School, Los Angeles.

The marriage of *Dorothy Rosenberg*

to Dr. Moses Passer took place in December. Dorothy's husband, a graduate of the UR, received his Ph.D. from Cornell and is a member of the faculty of the University of Minnesota. They live in Duluth at 723 E. Seventh St.

Carolyn Zellner is enrolled in the Smith College School for Social Work and doing field work at the Family and Children's Service Agency in Fort Wayne, Ind.

Ginny King is in Charlottesville, Va., where she is a part-time teacher of remedial reading at St. Anne's School for Girls. She is studying for her Master of Education degree in the field of reading at the McGuffey Reading Clinic, University of Virginia, where she has been awarded a service fellowship.

Ruth Ann Rickers, now a lieutenant, has completed her year of clinical training in the Occupational Therapy Subsection, Women's Medical Specialist Corps of the U. S. Army. After attending the Philadelphia School of Occupational Therapy, Ruth accepted a commission in the Medical Corps for clinical training. Then followed intensive schooling in neuropsychiatric and orthopedic training and in tuberculosis, general medicine and surgery. At the Army's largest hospital, Fitzsimons Army Hospital in Denver, Ruth treated Korean casualties. She has now been assigned to Madigan General Hospital in Tacoma, Wash.

Trudy Murphy Croghan and her husband are living in San Clemente, Calif., where Harold has been called to active duty with the Marine Corps. He has been studying at Cornell Law School and hopes to return to finish his law training.

Catherine Bentley Browning and George have reported from the U. S. Navy Recruiting Station in Birmingham, Ala., the attachment of new personnel. Their release reads "Robert Lynn Browning reported for duty at 1020 this date (September 22), weighing seven pounds, 12 ounces, fully fit for active duty.

1949

Joan Epstein is engaged to Marvin Shulman, a graduate of Cornell, now attending Columbia University Graduate School.

On her European tour, *Bobbe Sykes* ran into *Robin Narramore Tenney '48* and her husband in Vienna. Bobbe attended the Salzburg Music Festival. In Berlin, she paid a visit to the Russian

sector, where she said conditions were much worse than in other occupied countries.

Skipper Good is doing survey work in the Barometer Division of the Psychological Corporation in New York City. The oldest firm of its kind in the country, it takes public opinion pollings, does advertising and market research and tests nursing school applicants.

Evelyn Vock is now Mrs. Robert Sturge. Married in July, she was attended by *Catherine Cowles*. Evelyn is employed in the Technical Personnel Division of General Electric, while Bob is a trainee for Sears Roebuck.

Catherine Cowles is engaged to Harold McKenzie, who will graduate from Syracuse University this year.

Gini Barrett spent last summer at Brockport State Teacher's College and is now employed as a teacher at Greece Central School. She is enjoying very much her work with the third-graders.

1950

Tody Soble's engagement to Bernard Eissenstat has been announced. Tody has been employed by the Lawyer's Co-operative Publishing Company in Rochester.

Betty Pratt became engaged to Bill Stewart, '44, in November. Their plans for a late winter honeymoon of two weeks of skiing went awry when Betty broke her leg while skiing just before Christmas.

Beverly Goebel is in Philadelphia working toward her master's degree in library science at Drexel Institute.

Sally Williams is at Catholic University in Washington, D. C., working for her M.A. in English.

Another member of the class doing graduate work is *Mary Jean Sullivan*, who is at the Physical Therapy School of Duke University School of Medicine.

Ruth Swanker is employed in Rochester by Case-Hoyt Corporation, Printers.

Jinx Baker, who married Jerry Crouch in October, is employed at the Todd Company in Rochester. Jerry is working at Sibley, Lindsay and Curr.

Mary Lou Keck was married to Frank Eckert in September in Dallas, Tex. They are now living in Triumph, La., where Frank is an engineer with Gulf Oil Corporation.

Marg Sauerbrey became Mrs. Robert Quade in November. The wedding took place in Binghamton and Marge was at-

tended by *Martha Dowd*. Bob is a senior at the UR.

Ken Button, '50, and *Jane Wells* were married December 21 in Rochester. Jane is a research assistant in nuclear physics at the UR, while Ken is doing graduate work in physics.

Another December bride was *Charmian Werley*, who married John Cardwell Wright in Rochester. *Phyllis Adams*, '51 and *Jane Colahan Mullin* were among her attendants.

IN MEMORIAM

The Rev. Dr. Mitchell Bronk, '86, member of Delta Kappa Epsilon, died October 31 at his home in Germantown, Pa. He was 87. A native of Manchester, N.Y., Dr. Bronk received both his A.B. and D.D. from the UR and his M.A. from New York University. He also studied at the universities of Leipzig, Jena, Berlin and Geneva. He received his theological training at Crozier Theological Seminary, graduating in 1892. He served pastorates in New York City, Bayonne, N.J., and Stoneham, Mass. From 1924 to 1939 he was editor of the adult Sunday school publications of the American Baptist Publications Society. From 1931 to 1940 he was book editor of the society. Dr. Bronk was an authority on Baptist history and the author of many articles, short stories and books. Surviving are his son, Dr. Detley W. Bronk, president of Johns Hopkins University, and a daughter, Miss Isabelle Bronk, with whom he lived.

Neil Burgess Jr., '39, member of Theta Delta Chi, died last March 11. After receiving his M.S. from M.I.T., he was with General Electric's gas turbine division and lived in Melrose, Mass. His wife and two daughters survive.

Charles W. Butler, '91, died last November 16. Graduate of Albany Law School, he had practiced law in his home town of Fairport and served as town clerk, village president, village attorney and supervisor of the town of Perinton.

George B. Carpenter, '11, died at his home, North Brookfield, Mass., on October 5.

Joseph L. Humphrey, '95, member of Psi Upsilon and Phi Beta Kappa, died last November. He was an attorney, practicing in Rochester.

Robert E. Rogers, '95, died November 11 in Buffalo. He was 78. Until his

retirement two years ago he was assistant secretary-treasurer of Spencer-Kellogg & Sons, Inc., with which he had been associated since 1902.

George H. Taylor, '10, member of Alpha Delta Phi, died last September 30. He was an executive of the Taylor Instrument Company for many years.

Horace F. Taylor, '93, member of Alpha Delta Phi, and trustee of the University until last year, died last October 5 in Buffalo where he had been a civic leader for many years. He was president of Taylor and Crate, Inc., wholesale lumber firm, until it was liquidated a few years ago and a former president of the Buffalo Chamber of Commerce. He also had been president of the Buffalo Lumber Exchange and the National Wholesale Lumber Association, then the largest trade association in the United States. His son F. Chase Taylor, known to the radio world as "Col. Stoopnagle", also a UR graduate, died last May and his wife, the former Sara Chase, died in 1927. Surviving are another son, Horace Jr., a daughter, two brothers and a sister.

George B. Marble, '03, member of Delta Upsilon, died last September 21 in his home in Syracuse. He was 71. From 1903 to 1905 he was principal of Parish High School, and from 1905 to 1915 served as principal of Spencerport High School. He married the former Miss Frances Julia Slayton, '10, of Spencerport. In 1918 he moved to Syracuse and became associated with the Cloverland Dairy and was one of the first to advocate pasteurizing milk. In 1922 he started his own business and at his death was president of The Marble Farms Dairy, Inc.

He was a member and former elder of First and Fourth Presbyterian Church of which his wife is now an elder. He is survived also by two daughters, Mrs. LaVerne M. Brister of Owego, and Miss Beatrice N. Marble of Rochester; four sons, James W., Quentin G., Louis S., and Frederic M. Marble; five grandchildren.

College for Women

Rae Wyland McIntyre, '36, died December 10. She was employed as an optical designer at Projection Optics Company in Rochester. She is survived by her husband, Laverne S. McIntyre and three small sons, Daniel, Dennis, and Douglas.



The
UNIVERSITY OF ROCHESTER
ALUMNAE ASSOCIATION

offers a series of

Wedgwood Dinner Plates

with campus scenes in commemoration of
THE UNIVERSITY CENTENNIAL

Historic Anderson Hall

Other center views include:

SIBLEY LIBRARY, CUTLER UNION
AND RUSH RHEES LIBRARY.



Plates will be made by Josiah Wedgwood and Sons in England and delivery will be made next year.



Ideal for Graduation, Wedding and Anniversary Gifts.

THE traditional Wellesley pattern has been chosen. It is an embossed border of clusters of fruit on a rich creamy glaze. The Center views will be in Wedgwood blue. This is an open stock pattern. To complete your luncheon or dinner service, cups, saucers and other matching pieces may be obtained from any fine china store.



It is IMPORTANT to get your order in early. Orders are now being taken.

Set of four 10¾" dinner plates \$12.00
Individual plates 3.00

ALL ORDERS FOR SETS OF FOUR WILL BE FILLED BEFORE SINGLE PLATES ARE SOLD.

DETACH AND RETURN THIS ORDER BLANK TO THE UNIVERSITY OF ROCHESTER ALUMNAE ASSOCIATION
204 CUTLER UNION ROCHESTER 3, NEW YORK

Please order me..... set(s) of four center views of The University of Rochester Wedgewood plates at \$12.00 a set.

Please order me the following University of Rochester Wedgewood plates at \$3.00 per plate.
Indicate number of each

Anderson Hall..... Sibley Library..... Cutler Union Rush Rhees Library Total plates

Enclosed is my check for..... (Make checks payable to The University of Rochester.)

Please bill me when plates are delivered.....

NAME..... CLASS.....

ADDRESS..... CITY AND STATE.....