

Kansas Hay Market Report

Ground alfalfa movement: Southwest/South Central Tonnage: 11,754/4,397 Last week: 11,317/4,434 Last year: 12,243/3,729 Hay trade is moderate. Demand is strong for dairy and grinding alfalfa, moderate for alfalfa pellets, prairie hay and stock cow quality hay.

Southwest Kansas: Dairy and grinding alfalfa steady. Movement moderate. Alfalfa: Horse, small square, 180.00-240.00; Dairy, Supreme 175.00-200.00, Premium 170.00-185.00, Good 150.00-175.00. Utility-Fair grinding alfalfa shipped in or at the edge of the field, 130.00-140.00, an instance 150.00, contracts to 150.00. Ground and delivered locally to feedlots and dairies, 150.00-160.00, contracts to 165.00. The week of 8/4-9, 11,754T grinding alfalfa and 2,121T of dairy alfalfa were delivered. Straw, good large bales 55.00-60.00, or 65.00-72.00 delivered, some 85.00 ground and delivered.

South Central Kansas: Dairy and grinding alfalfa and alfalfa pellets steady. Movement moderate. Alfalfa:

Horse, small square 200.00-220.00, mid or large square 185.00; Dairy, Supreme 170.00-195.00; Premium, 160.00-180.00, Good 145.00-170.00. Utility-Fair grinding alfalfa at the edge of the field 100.00-120.00, 110.00-125.00 delivered. Ground and delivered locally to feedlots 120.00-135.00. The week of 8/4-9, 4,397T of grinding alfalfa and 1,416T of dairy alfalfa were delivered.

Southeast Kansas: Alfalfa, brome and prairie hay steady. Movement moderate. Alfalfa: Horse and goat, small square 180.00-200.00, mid square 220.00. Dairy alfalfa, Supreme 185.00, Premium 175.00, Good 130.00-150.00.

Northwest Kansas: Dairy and grinding alfalfa steady. Movement moderate. Alfalfa: Horse, small square 175.00-200.00. Dairy, Premium-Supreme 175.00-185.00, Good 165.00. Utility-Fair grinding alfalfa at the edge of the field 90.00-110.00; Ground and delivered to feedlots and dairies 120.00-140.00.

North Central-Northeast Kansas: Dairy and grinding alfalfa, prairie

hay and brome steady. Movement moderate. Alfalfa: Horse small square 185.00-200.00, Mid square 165.00-185.00; Dairy, Supreme 170.00-200.00, Premium 140.00-170.00. Utility-Fair grinding alfalfa at the edge of the field, 70.00-80.00, contracts to 90.00, alfalfa ground-on-the-truck 90.00-100.00. Grass hay: Bluestem small square, Good 100.00, Mid square 80.00-90.00, large rounds 50.00-80.00. Brome: Good, small square, 100.00-120.00, a little 4.00-4.50/bale, Mid squares, 90.00-120.00, large round, 50.00-75.00, some horse quality 45.00/large round bale delivered, stock cow 36.00/bale delivered. Straw small square 3.00-3.50/bale, large bales 50.00-55.00/T, some ground and delivered 92.00.

The Kansas Hay Market Report is provided by the Kansas Department of Agriculture with technical oversight from the USDA Agricultural Marketing Service.

CONSTRUCTION, FARM OR RANCH — TOUGH TRUCK BEDS MADE FOR THE LONG HAUL

Standard Features

- 1/8" Tread Plate Floor
- 3" Structural Channel Crossmembers
- Heavy Duty Tapered Header
- 4" Structural Channel Long Sills
- Pockets & Rub Rails — 2 Sides
- Back Step
- 6 1/2" Sq. Tail light holes w/exp. metal
- Length — 7' thru 14' • Width — 72" thru 96"
- Color — Black

Options

- Square Header • Sun Shade
- Gooseneck Compartment • Back Pockets
- Light Packages • Other Accessories Available



Ginder Hydraulic, L.C.
1218 N. 9th Street • Salina, KS • 1-800-800-1909

Tell us what you think about:

The Kansas Wheat Assessment

The Kansas Wheat Commission has approved an increase in the wheat assessment to 1.5 cents per bushel, effective Jan. 1, 2009. It is the first such increase since 1996.

Why is the assessment increase being sought?

In recent years, Kansas Wheat Commission reserves have diminished due to short crops and reduced wheat acreage.

How will wheat producers benefit?

Assessment collections are used for research, promotion and education. An in-depth survey of producers in 2007 shows:

- widespread support of the wheat assessment, and
- priority investments to be in research.



Although not required by law, the Kansas Wheat Commission seeks all comments on the assessment increase.

Please write to:
Kansas Wheat Commission
217 Southwind Place
Manhattan, KS 66503;
call 1-866-75-WHEAT, fax 785-539-8946
or e-mail: kswheat@kswheat.com

MANHATTAN COMM. CO. INC. CATTLE AUCTION EVERY FRIDAY

1-800-834-1029 Toll-Free
STARTING 10:00 A.M. ON CULL COWS FOLLOWED BY STOCKER FEEDERS — 11:00 A.M.
OFFICE PHONE 785-776-4815 • OWNERS MERVIN SEXTON & JOHN CLINE

For our sale Friday, Aug. 15 we had a good attendance of local and out-of-state buyers bidding on a good run of cattle. The bulk of the run was feeder heifers and they were selling at fully steady to stronger prices. Feeder steers and light calves were in very good demand and were selling \$2 to \$3 higher. Cull cows and bulls sold at steady prices on the kind offered. Following is a partial listing.

STEER CALVES — 375-550 LBS.				BULLS — 1,500-2,175 LBS.			
Dean Blanka	Wamego	3 blk str	423 @ 132.00	Ben Freeman	Abilene	1 simm bull	2015 @ 78.25
Dean Blanka	Wamego	5 bwf str	484 @ 127.00	Jeff & Sally Miller	Onaga	1 blk bull	1790 @ 77.25
Eldon & Dorothy Zabel	Wheaton	2 blk str	375 @ 123.50	Craig Johnson	Council Grove	1 blk bull	2100 @ 75.75
Linda Clough	Alta Vista	7 blk str	497 @ 120.00	Leroy Fechner	Alta Vista	1 blk bull	2090 @ 73.75
Dean Blanka	Wamego	3 herf str	520 @ 118.25	Jean Tessorndorf	Wamego	1 blk bull	1750 @ 73.25
Chris & John Stiner	Vermillion	3 herf str	543 @ 110.00	Lyle & Jay Kufahl	Wheaton	1 blk bull	2155 @ 72.25
FEEDER STEERS — 550-900 LBS.				Glen Dressman	Frankfort	1 blk bull	2090 @ 70.00
Ron & Lynn Anderson	Dwight	6 blk str	550 @ 127.00	Norman Brackenbury	Wamego	1 blk bull	1505 @ 69.75
Ron & Lynn Anderson	Dwight	13 blk str	655 @ 122.50	Steve Carr	Junction City	1 blk bull	1755 @ 69.00
Gary & E.A. Schellhorn	Junction City	29 bwf str	694 @ 121.85	EARLY CONSIGNMENTS FOR AUG. 22			
Ron & Lynn Anderson	Dwight	11 bwf str	710 @ 121.00	99 choice rep. Angus feeder str, 800-900 lbs.			
Ron Blanka	Wamego	11 blk str	662 @ 120.75	90 choice rep. blk & bwf str & hfrs, 650-800 lbs.			
Gary & E.A. Schellhorn	Junction City	11 bwf str	582 @ 119.25	64 blk str, EID tags, 2 rds shots, weaned July 8, 650-800 lbs.			
Berges Ranch	Onaga	17 blk str	789 @ 118.60	47 choice blk & bwf str & hfrs, weaned, shots, 555-650 lbs.			
Linda Clough	Alta Vista	14 blk str	600 @ 118.00	40 fancy blk str & hfrs, 700-800 lbs.			
Berges Ranch	Onaga	15 blk str	879 @ 111.00	30 blk Simm-x str & hfrs, weaned 60 days, 2 rds shots, bunk broke, 600-700 lbs.			
HEIFER CALVES — 400-550 LBS.				30 choice blk str, longtime weaned, 2 rds shots, 750-825 lbs.			
Dean Blank	Wamego	6 blk hfr	433 @ 118.50	30 High Choice blk & Red Angus str & hfrs, weaned, 750-850 lbs.			
Ron Deters	Goff	2 blk hfr	357 @ 115.00	25 choice blk & bwf str, weaned, 700-800 lbs.			
Shannon Flowers	Havensville	2 blk hfr	460 @ 115.00	20 blk & blk baldy mostly str & hfrs, 600-650 lbs.			
Dean Blanka	Wamego	2 blk hfr	502 @ 114.50	13 blk & bwf str & heifers, 700-800 lbs.			
Randy McWilliams	Milford	3 cross hfr	453 @ 111.50	9 homeraised blk Simm cows, 3-8 yrs old, bred to homozygous blk Simm bull for Sept. 1 calving			
Linda Clough	Alta Vista	8 blk hfr	533 @ 111.00	EARLY CONSIGNMENTS FOR AUG. 29			
Randy McWilliams	Milford	3 blk hfr	541 @ 110.25	Complete Dispersal of 107 fancy blk OCV fall calving cows and 1st calf hfrs, consisting of 37 home-raised 1st calf hfrs of which 25 plus will have late July and Aug. calves with the balance heavy springers. The hfrs are bred to a LBW Ohlde Angus bull. 60 blk cows, 4 years old and 10 blk bwf cows, 5 years & older, all are bred to Moser 1/2 Blk Simm 1/2 Angus, and a Ohlde 1/2 Angus 1/2 Amerifax bulls and should start calving Sept. 1. These cows are 100% OCV vaccinated, they have had preg guard 10 shots and have all been homeraised or bought as weaning heifers. This will be an excellent opportunity to purchase high quality young fall calving cows.			
Linda Clough	Alta Vista	4 blk hfr	395 @ 109.75	75 choice rep. str & hfrs, 2 rds shots, weaned July 4, 500-600 lbs.			
Ron & Lynn Anderson	Dwight	2 blk hfr	510 @ 107.50	60 choice blk & bwf str & hfrs, 2 rds shots, weaned July 12, 600-700 lbs.			
Eldon & Dorothy Zabel	Wheaton	2 blk hfr	492 @ 106.00	52 blk & bwf str & hfrs, 600-700 lbs.			
Patty Chestnut	Clay Center	2 blk hfr	507 @ 105.50	12 choice blk bwf and 3 Red Angus cows, 2-4 years old with June-July blk bwf calves. Cows have been running with Angus bull - all the time.			
Berges Ranch	Onaga	2 blk hfr	492 @ 101.00				
FEEDER HEIFERS — 550-900 LBS.							
Gary & E.A. Schellhorn	Junction City	25 bwf hfr	652 @ 112.75				
Ron Blanka	Wamego	18 blk hfr	651 @ 111.60				
Ron & Lynn Anderson	Dwight	9 blk hfr	578 @ 111.60				

FIELD REPRESENTATIVES — Visit Us On The Web — www.mcclivestock.com

JOHN CLINE ONAGA 785-889-4775 Cell: 785-532-8381	SAM GRIFFIN BURNS 620-726-5877 Cell: 620-382-7502	BRENT MILLER ALMA 785-765-3467 Cell: 785-587-7824	ALAN HUBBARD OLSBURG 785-468-3552 Cell: 785-410-5011	MERVIN SEXTON MANHATTAN 785-537-7295 Cell: 785-770-2622	BILL RAINE MAPLE HILL 785-256-4439	TOM TAUL MANHATTAN 785-537-0036	JEFF BROOKS BEATTIE 785-353-2263 Cell: 785-562-6807	BRYCE HECK LINN 785-348-5448 Cell: 785-447-0456
--	---	---	--	---	---	--	---	---

Kansas Wheat Commission elects new officers at Hutchinson meeting

At its annual meeting in Hutchinson Aug. 6, the Kansas Wheat Commission elected Mike Brown, Colby, chairman. Rounding out the 2008-09 officer team is Doug Keesling, Chase, vice-chairman, and Richard Randall, Scott City, is secretary-treasurer.

Brown and his wife, Jeanene, grow dryland wheat, grain sorghum and corn. A commissioner since 2002, he has served on a number of the commission's committees and has played an integral part of the KWC's joint operating agreement with the Kansas Association of Wheat Growers. Brown represents the KWC's first district.

"I look forward to continuing to represent the best interests of the state's wheat

producers. The Kansas Wheat Commission continues to move forward, building on its strong history," he said.

Keesling is the fifth generation to operate Keesling Seeds, a certified seed business. In addition, he grows wheat, corn, soybeans, grain sorghum and has a cow-calf operation. He has been an at-large commissioner since 2003 and has served on a number of state and regional KWC committees, including the advisory board of the International Grains Pro-

gram and vice president of Plains Grain, Inc. He has two young children.

Randall and his wife, Glenda, have a diversified crop farm near Scott City, growing dryland and irrigated wheat and corn and dryland grain sorghum. An at-large commissioner since 2005, Randall has served on a number of state KWC committees. The Randalls' have two grown children.

The KWC also gave recognition to Dean Stoskopf, outgoing chairman of the organization. For six years,

Stoskopf has spent countless hours working on behalf of Kansas wheat producers.

Also during the annual meeting, Commissioners discussed the U.S. Department of Agriculture's Hard White Wheat Development Program, a provision of the 2008 Farm Bill. Providing the funds are available, the USDA will devote about \$35

million earmarked for the program from 2009-2012. The HWWDP program is designed to boost production to 240 million bushels by 2012. The program includes incentives of 20 cents-per-bushel incentive and \$2 per acre.

Kansas leads the nation with more than 233,000 acres planted to Hard White Wheat from 2005-07; most of

which is planted in western Kansas. Millers and bakers in many countries prefer hard white wheat to hard red wheat, but supplies of hard white wheat are often inconsistent. Kansas Wheat believes the program should be targeted to seed and production, to ensure that ample supplies of wheat get into the marketing chain.

Since 1954

GRASS & GRAIN

Subscribe today at
785-539-7558
or online at
grassandgrain.com

- Classifieds
- The Learning Post
- Our Daily Bread
- Rural Life
- The Sage of the Flint Hills
- Horsin' Around
- Baxter Black
- This Side of 60
- Yard & Garden Tips
- Auction Listings
- Over the Barn Gate
- Special Issues

WANTED!

CONSIGNMENTS WANTED!

For our next equipment consignment auction on **SEPTEMBER 6, 2008** at Forbes Field in Topeka. Get equipment you are not using signed up today to take advantage of our national marketing campaign.

www.simmittauction.com

Darrell Simnitt 785-231-0374	Ralph McLeod 785-249-5916
---------------------------------	------------------------------

AUCTIONS BY:
SIMNITT BROS.

"We Will Go Anywhere for Your Auction!"

REAL ESTATE AUCTION

TUESDAY, AUGUST 26 — 6:00 PM
MANHATTAN, KANSAS
4 HOMES IN MANHATTAN

<p>6:00 PM - 1517 PIPHER LANE Ready to move into. 3 bedroom ranch style home with newer kitchen, bath, large living room, utility room & attached garage. This home has new carpet, fresh paint and low traffic neighborhood. Great opportunity to purchase well kept home at Auction. Call for appointment Vern Gannon Broker/Auctioneer 785-539-2316 or 785-770-0066, Gannon Real Estate & Auctions 785-537-9003 or Landmark Real Estate Listing Agent 785-776-2222.</p> <p>6:30 PM - 1520 PIPHER LANE 3 Bedroom home has large living room, very nice kitchen, living room, bath, utility area & attached garage. The home is ready for immediate occupancy with new paint & carpet. Great location for family or rental. Call for appointment Vern Gannon Broker/Auctioneer 785-539-2316 or 785-770-0066, Gannon Real Estate & Auctions 785-537-9003 or Landmark Real Estate Listing Agent 785-776-2222.</p> <p>7:15 PM - 2133 SLOAN Cute well kept 2-bedroom home on corner lot. This home has been well kept and ready to</p>	<p>move into as a home or rental. Many updates have been made and this home has many possibilities! Call for appointment Gannon Real Estate and Auctions, 785-537-9003 or 785-770-0066.</p> <p>7:45 PM - 2217 SLOAN Great rental or starter home, 2 bedrooms, kitchen, bath, living room. Well kept clean home that is awaiting new occupant. Call for appointment Gannon Real Estate and Auctions, 785-537-9003 or 785-770-0066.</p> <p>TERMS: Buyers to pay 10% down day of Auction with balance due on or before September 16, 2008. Buyer and Seller to divide Cost of Title Insurance equally. All inspections including lead base paint inspection to be completed prior to Auction at Buyers expense if requested. Taxes prorated to closing. STATEMENTS MADE DAY OF AUCTION TAKES PRECEDENCE OVER ANY OTHER INFORMATION. Don't miss this opportunity. Contact Vern Gannon Broker/Auctioneer 785-539-2316 or 785-770-0066, Gannon Real Estate and Auctions 785-537-9003.</p>
--	---

AUCTION

THURSDAY, AUGUST 21 — 5:00 PM

To be held at the National Guard Armory located on #81 Hwy. at the South edge of CONCORDIA, KANSAS
A large auction w/nice items.

<p>DOLLS, ANTIQUES & COLLECTIBLES COINS: 5 silver dollars; 9-Kennedy halves; 5 Buffalo nickels; Indian Head penny. Dolls: approx. 75 dolls; Shirley Temple Ideal w/box; American Classic Althen Porcelain; American Classic Porcelain Wendy; Boy & Girl composition dolls; comp. bride doll; 4 porc. bride dolls; porc. Sweetheart; Crissy doll w/box; Shirley Temple porc. w/box; Bisque w/box; 3 Caroline Taylor; 2 Noble Heritage porc. w/ boxes; 2 Cabbage Patch; Camelot by Doll Crafter; Ashton Drake Camelot; doll chest w/Ballerina; porc. doll; 1966 Barbie; 1962 Midge; porc. doll head Christmas decoration; Troll doll; porc. Camelot; 20 composition dolls; 10" porc. 16 collector dolls in boxes; Ig. comp. doll; 20 assorted porc. dolls; doll tea sets; doll shoes; very nice assort. of dolls, like new; WW II scarves; Velvet tobacco tin; Union Leader tobacco tin; bolo ties; Lions belt buckle; men's watches; lg. button collection, some unique; McCoy wishing well vase; Shawnee deer vase; 3 crocks; painted bowls; cookie cutter collection; Elvis Presley record; assort. of records; set of 6 hardback Zane Grey</p>	<p>books; miniature farm wagon & tricycle; Ruby Red kerosene lamp w/white globe; Jewell Tea Halls pie plate & bowl; painted plates; 4 pink depression glasses; juice pitcher; 4 amber depression plates; 3 pcs. coin glass; clear glass berry set; alum pitcher & glasses; meat grinder; quilting books; RCA Victor radio celluloid; book shelf; assort. of embroidered tea towels, pillow cases & fancy work; iron miniature beer wagon w/8 horse hitch; 4 oak pattern back chairs; pine sewing rocker; wicker 1/4 pc. patio set; parlor table; painted commode; pine drop leaf table.</p> <p>MISCELLANEOUS Haier 5 cu. ft. chest deep freezer; West Bend bread machine & dough maker; Lowery Trak II Rhythm elec. organ w/bench; Brother VX-940 portable sewing machine; Lazy Boy recliner w/heat & massage; Quasar 27i console t.v. w/remote; sewing cutting table; 2 green velvet swivel rockers, like new; 6 shelf bookcase; wood coffee table; casseroles; 12 plc. set sterling; china dish-ware; set of Reed & Barton stainless silverware; Corning ware; Fire King; pressed glassware; toaster oven; skillet set; assort. of kitchen ware, elec. ice</p>	<p>cream freezer; Bunn coffee maker; Santa cookie jar; household items & utensils; paper shredder; ice tea pot; assort. of figurines; 8 track tapes & tape holder; craft items; rubber stamp collection; assort. of household & miscellaneous items.</p> <p>TOOLS Craftsman wet & dry vacc.; Skil scroll saw; Saw table; 1/2" elec. drill press; 10" band saw; Craftsman 1 1/2 hp. router w/table & bits; 8 1/4" compound miter saw; cordless drill; elec. portable air compressor; 10" Delco table saw; Edison wood lathe w/table 6"x24"; Skil 3/8" elec. drill; Makita elec. hammer drill; Skil elec. hammer drill; lg. Power Kraft tap & die set; pipe wrenches; elec. staple gun; draw knife; drill bits; wood clamps & corner clamps; vibrating sander; levels; bench grinder; 2 wheel cart; 2 tubs; wood planes; snow blower; wood working tools; wire crimper & cutter; tin snips & cutters; trowels; screw drives; 1/4" & 3/8" sockets; sledge; Hatchet; punches; chisels; vise grips; "C" clamps; hammers; wood working books; assort. of tools & other misc.</p>
---	---	---

TERMS: Cash or ck. w/proper ID: LUNCH: On Grounds

JOAN DEMANETTE — SELLER

AUCTION CONDUCTED BY LARRY LAGASSE AUCTION & REAL ESTATE
CONCORDIA, KS. • PH: 785-243-3270
Web Site: www.llagasseauction-re.com

LARRY LAGASSE Ph: 785-243-3270	AUCTIONEERS: Lance Lagasse Ph: 785-262-1185	Joe Odette Ph: 785-243-4416
-----------------------------------	---	--------------------------------

THE LEGEND ROLLS ON

FOR 42 MONTHS
ON ALL FARMALL® MODELS.

PLUS, GET A \$650
FUEL CARD!*

*See your Case IH dealer for complete details.

INTEREST FREE AND FREE FUEL TOO!

Farmall® tractors are back. The tractor that shaped farming history is forming its future. With a full line of 20 versatile new models ranging from 31-105 hp, Farmall tractors are perfectly powered for the jobs you need to get done. Buy now and get a \$650 fuel card to push your productivity even further. With 0% financing for 42 months, it's the perfect time to talk to your Case IH dealer. CASE IH. FOR THOSE WHO DEMAND MORE.™

Hurry! Offer ends soon.

KanEquip.com
Wamego • (888)456-2041

*For commercial use only-not intended for personal, family or household use. Customer participation subject to credit qualification and approval by CNH Capital America LLC. See your Case IH dealer for details and eligibility requirements. Down payment may be required. Offer good through September 30, 2008. Not all customers or applicants may qualify for this rate or term. CNH Capital America LLC standard terms and conditions will apply. Taxes, freight, setup, delivery, additional options or attachments not included in suggested retail price. Offer subject to change or cancellation without notice.

©2008 CNH America LLC. All rights reserved. Case IH and CNH Capital are registered trademarks of CNH America LLC. www.caseih.com

Commission approves assessment increase

The Kansas Wheat Commission has approved an increase to the wheat assessment, meaning that beginning Jan. 1, 2009, farmers will have a 1.5-cent per-bushel wheat "assessment" at the first point of sale. This is an increase of one-half-cent per bushel over the one-cent per bushel assessment, in place since 1996.

Although not required by state statute, the KWC is providing a comment period until Sept. 7, 2008. Wheat producers may call the KWC office at 1-866-75-WHEAT or e-mail kswheat@kswheat.com or send comments by mail to the Kansas Wheat Office at 217 Southwind Place, Manhattan, KS 66503.

The Kansas legislature approved an assessment authority increase - from 10 mills, to 20 mills - during the 2008 Legislative Session. The actual assessment increase will be from 10 mills to 15 mills - or from one penny, to one-and-a-half pennies, per bushel.

The assessment could generate an additional \$1.2-1.4 million per year, depending upon the size of the annual wheat crop. The Kansas Wheat Commission is charged by state statute to use assessment investments for research, promotion and educational efforts.

"This money will primarily be used to enhance research and development for

wheat," said Dusti Fritz, chief executive officer for Kansas Wheat. "Research, including developing new varieties and incorporating new traits into wheat varieties, gives farmers more bang for their buck."

For the past year, the Kansas Wheat Commission and Kansas Association of Wheat Growers have solicited input from farmers on the potential assessment authority increase. In a survey conducted last fall, farmers indicated that research was a top priority for their investment.

Kansas Wheat Commission chairman Dean Stoskopf, Hoisington, said the wheat assessment has not changed in 12 years; however, the KWC's costs have increased dramatically. Meanwhile, state and federal support for wheat research have diminished drastically.

"Our state's farmers stand ready to make the necessary commitment to ensure our research efforts continue and that they are innovative," Stoskopf said.

At its annual meeting last week, the Kansas Association of Wheat Growers membership passed a resolution supporting the assessment increase.

In 1988, the Kansas Wheat Commission voted to raise the assessment collected to 7 mills; in 1996, the Commission voted to raise the collection to 10 mills.

COUNTRYWIDE TRACTOR AND AUCTION

WEDNESDAY, AUGUST 27 — 9:30 AM

191st St. & 169 Hwy. — SPRING HILL, KANSAS

TRACTORS

John Deere
 JD 2140 FWA CHA
 JD 4430, rough
 8630 3pt PTO Good Rubber / 1010G w/LDR
 '06 3120FWA, 3pt, Joystick, 60"deck 690hrs - NICE!
 '03 790 FWA w/419 Ldr, 360hrs / 2010D
 4010D / 430Rough / 2 - 3010G's / 2510D
 4600 Hydro Slvg / 2150D Remotes
 / 770 GearDrive / 2010 Slvg / A w 3pt

Case IH
 1086 CHA New Paint 89hrs on OH Nice
 756D 3pt Nice / 504G Ldr / 656D Ldr
 574G w/ 2250Ldr / 140 w/Cult / 3 H Farmalls
 Case 885D / Farmall M / IH 2544 w/Ldr

Oliver, Kubota and Others
 Oliver 1550 and 1650 both 3pt Gas, Restored used on hay, both in ex. Cond!
 Kubota B6100D FWA / L175D 3pt
 MF 245D / 235G / Ferguson TO20
 AC, C / WD45NF / D17G / Allis 160D
 White Field Boss FWA D 30hp
 Several Ford 8ns & 9ns / 901 Ford

Expecting More by Sale Day!

HAY EQUIPMENT

Balers & Processors
 '01 JD 567 Baler / JD 97 566 Net Wrap
 2 IH 3650s / JD 535 Net / JD 530
 JD 530 / Several JD 510s / JD 336 Twine
 Hesston 565 / 550 / 5800
 NH 654 / 855 / 2 - 850 balers
 Vermeer 605F / IH 430 Twine / NH 276 Wire
 Bale King Vortex 3100 Processor
 Hesston BP20 Processor W/Conveyor
 Dew-Eze Super Slicer Processor

Mowers, Rakes, Hay Wagons
 NH 258 and 256 Dolly Rakes
 NH 55 / 56 Rakes several others
 JD 275 and 260 Disk Mowers
 NH 469 Haybine / 2 JD 350 Sickle Mowers
 NH 1044 Bale Wagon / Pop Up Hay Loader

More Arriving by Sale Day!

TILLAGE & PLANTING
 IH 4500 Field Cult 24' / IH 45 Field Cult 12ft
 Krause 12' Disk Nice / JD 220 Disk 20ft
 Several 6-12 Disks
 IH 5100 Drill Press Wheels Grass Seed Nice
 IH 510 12ft w/Fert Nice Drill! / Svrl 6-12 Disks
 JD 8200 Drill / JD 1600 Chisel 13 Shank
 JD 3 Btm Plow Semi Mount / 3pt Cultivator
 Several Others More Coming etc etc

MISC. EQUIPMENT

Kubota 4' Tiller/ IH & JD Manure Spreaders
 20.8 x 38 Tract Tires & Wheels off JD 4630
 Rainflow Mulchlayer and Transplanter
 New BH Post Hole Digger / Log Splitter
 Swisher 60" 18hp Cutter New / JD #50 Ldr
 Pull Type Bale Mover/ Post Hole Diggers
 Squeeze Chute / Fuel Tanks / Box Blades
 Boom Poles / Oliver Cab / Skid Tires

Several Sprayers, Gravity Flows and Blades,
 Tractor Weights/18.4x38 Duals/JD Frnt Whts

TRUCKS & TRAILERS

2000 Freightliner UniCab 463 Detroit 13 Spd, New Tires
 '90 KW 425 Cat 13spd w/ Wetkit
 '93 Ford Aeromax TA 13spd Cummins Asphalt Bed
 '82 Ford LTL9000 425 Cat 13spd Asph Bed
 '77 KW TA 13spd 425 Cat Asph Bed
 '80 IH S2275 13spd Asph Bed Ford L9000, Barrel Bed
 '84 KW Conventional Cat 13spd Nice Wetkit
 '82 Ford L9000 SA / '65 Chevy TA 4+2
 '92 Ford F900 TA Dump Allison Auto Diesel
 '94 Ford F800 D Flat Bed 110k Nice
 '82 GMC 7000 366 4+2 Flatbed
 '80 C6000 366 4+2 16' Bed & Hoist w/ Auger
 '02 SLT 1500 Quad Cab 4x4 94k Loaded
 '99 Ford F-350 Flatbed D 4x4 120k Auto Nice
 '96 Ford F-250 4x4 460/ '79 Chevy 4x4 Lift Kit
 '97 Ford F-350 Service Bed
 '97 F-150 4x4 Auto Flat Bed Utility Boxes
 93 Ford F250 D 110K 5spd / '90 Ford F-250 D
 '95 Ford F-250 4x4 Ext Cab 14' TA Truck Bed and Hoist
 '07 Frameless 20ft Barrel Bed Trailer- New!
 Ford F700 SA Rock Truck
 48' Enclosed Trailer/ 5x14 Cat-tle Trailer
 24' GN Enclosed Trailer
 Tri Axle Trailer Pindle Hitch 6x14
 2 Float Trailers 24' and 48'
 32' Coose Stock Trailer Needs Floor
 Several other trucks and trailers arriving daily

MINI TRUCKS/4-WHEELERS MOWERS

'95 Suzuki Mini Truck 4x4 CAH 30k
 '01 Mini Truck CHA 4x4 68k / Dirt Bike
 Several Golf Carts - Late Model and Older
 Honda Foreman 4 Wlr/ Baja 250 Dune Buggy
 90cc 50cc 4-Wheelers / Ez-Go Dump Cart
 Toro 3000D 84" Deck / JD Mwr Decks
 Several Front Deck Mowers
 Snapper 0-turn Mower/ Kubota Lawn Tractor
 JD 180 w/Snow Blower Atch
Several parts and Others not listed

FEED, CUTTERS & LOADERS

Lilliston 15' Mower / Swarts Feed Wagon
 Hesston BP20 w/Conveyor/ JD 148 Loader
 04 Deweze SuperSlicer II / JD 1508 Cutter
 Landpride 12' Finish Cutter / D19 Ldr
 Several 90 Bushel Grinder Mixers
 BH 82in 3pt Cutter / JD 460Ldr off JD4600
 Bale King Vortex 3100 Processor
 BushHog TD1100 12' Finish Mower
 Kubota 1150 Ldr w/ Joystick/5 Grav Wagons
 Bushhog 10' and 6' Pull / Finish Mowers
 Westendorf WL29 Ldr JD Mounts
 Several Cutters and Ldrs Not listed

NOW AVAILABLE

Bid on line with Proxibid, go to www.proxibid.com and register today.

AUCTIONEER'S NOTE: There will be lots of MISC!!! We will start on tools at approximately 9:30 am. At 10:30 am we will start two rings selling Tractors & Farm Equipment.

APPROXIMATE SALE SCHEDULE: Tools & Misc. - 9:30 a.m. Tractors/ Farm Equip.- 10:30 a.m. Sod/Landscape/Const. - 1:00 p.m. Trucks & Trailers - 2:00 p.m.

TERMS: Cash or check with proper ID day of sale. All items must be paid for day of sale and prior to removal. No exceptions. No retail sales after Aug. 10. This is a partial listing. Flyer printed 2 weeks in advance. Lunch served on premises.

TAKING CONSIGNMENTS DAILY

www.countrywidetractor.com

OFFICE: 913-592-2004 • FAX: 913-592-2043

Date, 913-285-2053

Jack, 913-526-1133

AG PRODUCERS MEETING

YOU'RE INVITED... to an afternoon with

Mark Gold of Top Third Ag Marketing who will be addressing issues concerning risk management strategies to protect your bottom dollar.

Don't miss this unique opportunity to hear the latest farm trends and predictions.

Thursday, September 4, 2008 - 1:00 pm

JUNCTION CITY CAMPUS OF
 CLOUD COUNTY COMMUNITY COLLEGE
 631 Caroline St, Junction City, KS

RSVP:

877-479-7222

townsendjim@sbcglobal.net



Meeting Hosted By: Copeland Insurance Agency
 Offices located in Riley, Abilene, Manhattan and Wamego

AUCTION

SATURDAY, AUGUST 30 — 9:00 AM

Northwest Corner — DELIA, KANSAS

Furniture, Guns, Coins, Household, Appliances, Tools, Misc.

Oak 4-section stack bookcase; Maple hutch; 2 lift chairs (blue); Maple bed, chest & dresser; Oak 5-drawer chest-of-drawers; glass door bookcase; refrigerator; cedar chest; wood framed rocker; magazine rack table; Oak dropleaf table; bookcase desk unit; 2 small 4-drawer chests; 3-drawer chest; Singer sewing machine; bookcases; night stand; chairs; fern stand; office chair; wheelchair; invalid equipment.

GUNS & COINS

Colt 38 Special revolver; Marlin 22 rifle; Stevens model 85 22 rifle; Mossberg 410 shotgun. Various coins-Buffalo nickels, halves, many state quarters; lots wheat pennies & more.

Emerson TV/VCR; Rascal 600 mobility cart/chair; Kitchen Aid mixer; pots; pans;

dishes; cookbooks; vacuum; pictures; 50 pcs Jewel Tea including water pitcher, casseroles, bud vase, teapots, salt & peppers, cups & saucers and plates; Pedal tractor; 2 Red Wing stoneware canning jars; Red Wing poultry feeder; 2 gallon Western crock; cast iron Boxer dog doorstop; baseball cards; kerosene lamp; washboard; cast iron horse, rabbit, elephant & trick dog banks; cast iron tea kettle; horse head hitching post; blow torch; cast iron implement seat; ice tongs; license plates; cherry pitters; cow kickers; rug beaters; miniature cast iron cook stove; glass duck; JD tractor lamp; JD clock; oil cans; brass items; Aunt Jemima bank; Carnival piggy bank; wood planes; drawknife; wrenches; old

kitchen utensils; kraut cutter; Texaco bank; **various collector cars, trucks & tractors;** cookie jars; blue jar; salad sets; Coke glasses; fruit bowl; silver trim china; cruets; egg plates; stemware; glasses; animal figurines; books; bread box; canning jars; ping pong table; quilting & sewing notions & books; thimbles; quilts; fabric; bedding; rugs; jewelry box; costume jewelry; Lone Wolf & other pictures; bread machine; baskets; casseroles; cake & pie carriers; dishes; electric ice cream freezer; toolbox; electric chain saw; skill saw; tarps; child's wagon; bolts; kerosene heater; pitch forks; cross-cut saw; roof jacks; rods & reels; boomers; grinder; bars; many other items.

NOTE: This is a very partial list! Charlie & Julia attended hundreds of Auctions, many items to be discovered.

CHARLES & JULIA KELLER ESTATE

GANNON REAL ESTATE AND AUCTIONS

VERN GANNON, AUCTIONEER

785-539-2316 • MANHATTAN, KANSAS • www.gannonauctions.com



Annual KHA Tour in Northeast Kansas this weekend

The Kansas Hereford Association summer tour will have something for everyone and is on the calendar for Aug. 23-24.

This is a Saturday-Sunday tour which should give the weekenders a chance to participate in the whole tour. It is also not going to be a real fast paced tour, so everyone should be able to relax and really enjoy the event according to Tom Granzow, association secretary.

Saturday evening will be an "on your own" event. Topeka has many options for dining and entertainment for all to enjoy.

The headquarters hotel for the tour is the Days Inn at 1510 SW Wanamaker in Topeka. The number is (785) 272-8538. A block of rooms have been set aside under the Kansas Hereford Association for \$69.99 plus tax. Just mention the Kansas Hereford Association or my name and reserve your own room.

The tour will begin on Saturday at Lane Herefords 38295 Rockville

Road, LaCygne from 8-9:30 a.m. The ranch is located north of LaCygne on 69 highway to the Drexel exit, 1 1/2 miles east and three miles south. The second stop will be at Flory Polled Herefords at Lawrence from 10:30 before moving on to Bradley Herefords at noon for lunch. This stop is located at 1372 N 1000 Road. Afternoon stops include the Triple R Herefords at Valley Falls and Shumaker Polled Herefords at Wetmore from 4:30-5:30 p.m.

Sunday morning begins at the Frank Hug and Sons operation at Scranton from 8-10 a.m. Breakfast will be served at this stop. They are located at 2556 W 125th. street in Scranton. Shepherd Herefords, Burlingame will have cattle on display.

The next stops include Davis Herefords, Maple Hill and Mill Creek Ranch at Alma.

For more information on the tour contact Tom Granzow, association secretary at (785) 466-2247 or email kansashereford@tctelco.net.

Feddema and Jackson to speak at KRC summer board meeting

The Kansas Rural Center announces the program for its annual summer board meeting. The meeting, which focuses on Climate Change and Renewable Energy with a specific emphasis on those issues in Kansas, is at 1 p.m. on Saturday, August 23, at Lawrence Public Library, 707 Vermont Street, Lawrence.

Dr. Johannes Feddema and Nancy Jackson are the speakers on Climate Change and Renewable Energy followed by a walking tour of the Bowersock Dam, located on the Kansas River.

Feddema, a professor of geography at the University of Kansas, focuses his research on how humans impact the Earth's surface. Currently, he collaborates with researchers at the National Center for Atmospheric Research (NCAR) to develop an urban model in the center's Community Land Model.

Jackson, in addition to her position as executive director of the Climate and Energy Project, she is a participant in the Kansas Wind Working Group; serves on the advisory group for the Midwestern Greenhouse Gas Accord, and to the Presidential Climate Action Plan. Jackson has a Master of Arts in Environmental History from the University of Kansas.

Following the presenta-

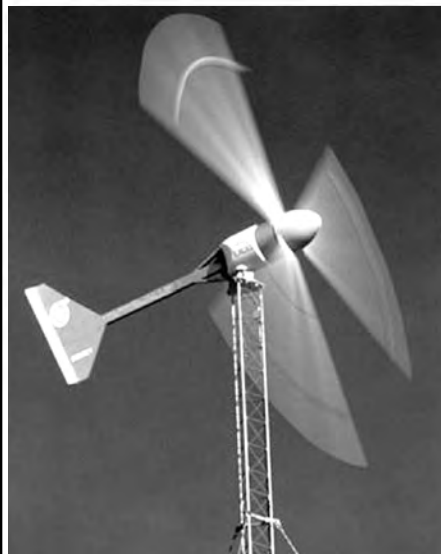
tions by Feddema and Jackson, Sarah Hill-Nelson leads a walking tour of the Bowersock Dam, one of the few hydroelectric power facilities in this part of the world. Hill-Nelson is the principle in Zephyr Energy which teams with Bowersock and the

Bonneville Environmental Foundation to support renewable energy through the sale of Green Tags or Renewable Energy Certificates.

For more information on the Bowersock Dam, please see the website at www.bowersockpower.com

For more information on KRC's annual meeting, please contact Dan Nagengast, KRC executive director, at (785) 748-0959; email him nagengast@earthlink.net, or consult KRC's website at www.kansasruralcenter.org.

Join The Kansas Energy Plan



Bergey Turbines
Tornado-Tuff
Designed, Built, and Proven
in America's Tornado Alley

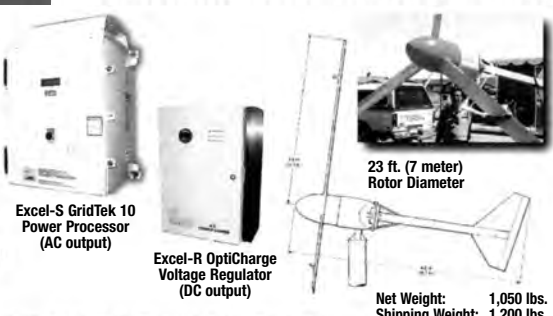


BWC EXCEL 10KW CLASS WIND TURBINE

- 5-YEAR WARRANTY
- AMERICA'S BEST SELLING RESIDENTIAL SYSTEM
- CERTIFIED BY CALIFORNIA ENERGY COMMISSION
- SIMPLE DESIGN - 3 MOVING PARTS
- PATENTED POWERFLEX® ROTOR SYSTEM
- AUTOFURL® AUTOMATIC STORM PROTECTION
- DIRECT-DRIVE PM ALTERNATOR
- NO SCHEDULED MAINTENANCE REQUIRED
- HEAVY-DUTY CONSTRUCTION
- DESIGNED FOR 30+ YEARS
- POLYURETHANE AIRCRAFT-QUALITY PAINT
- PROVEN, OVER 50 MILLION OPERATIONAL HOUR

The Bergey BWC Excel is a rugged and reliable small wind turbine that has been proven in hundreds of installations around the world. It comes from the world's leading manufacturer of small wind turbines and is backed by the longest warranty in the industry. Whether you want to reduce the electric bills at your home or power a critical load far from the power grid, the BWC Excel will deliver years of "worry-free" power.

- Excel-S: Grid-Intertie Applications (10kW)
- Excel-R: Battery Charging Applications (7.5kW)
- Excel-PD: Pumping Applications (10kW)



Excel-S GridTek 10 Power Processor (AC output)

Excel-R OptiCharge Voltage Regulator (DC output)

23 ft. (7 meter) Rotor Diameter
Net Weight: 1,050 lbs.
Shipping Weight: 1,200 lbs.

THE ONLY MOVING PARTS ARE THE PARTS YOU SEE MOVING



OAK GROVE
FABRICATION
15221 Schmedemann Rd.
Alta Vista, Kansas 66834
1-785-499-5311
dsam@tctelco.net

* EVERYONE KNOWS WE HAVE THE LOWEST PRICES *

GoBob Pipe & Steel Sales

SPECIAL
2" .220 wall pipe
GREAT FOR
POSTS-\$1.32 ft
While It Lasts!



HAY CONSERVER FEEDERS



PIPE & STEEL



PIPE BUNKS & SUPER BUNKS



CATTLEGUARDS



CONTINUOUS FENCE



GATES



THE BEST TRAILERS BUILT, PERIOD.



1-877-851-2365

www.gobobpipe.com

Thanks to Premium Auction Buyers 2008 — Morris County Fair — Council Grove, Kansas



Part of the supporters of the 2008 Morris County 4-H/FFA Livestock Premium Sale. Thanks to everyone who supported the Livestock Premium Sale

2008 HONOR ROLL OF BUYERS

- | | |
|---|-----------------------------------|
| Ace Hardware | Karen Meyers and family |
| ADM Alliance Nutrition - Mary Ann Kniebel | Kniebel Cattle Co. |
| All Around Veterinary Service | Lyons Ranch |
| Alta Vista Locker | Mashed O Ranch |
| Andres Farms | Max Brown |
| Bill Stephenson | Midway Motors Supercenter- |
| Black Diamond Cattle Company | Kris Hanschu |
| Bluestem Farm and Ranch | Morris County Farm |
| Blythe Angus | Bureau Association |
| Central National Bank | North Central Kansas Co-op |
| Central National Bank of White City | Oleen Brothers |
| CH White and Sons | Patry Farms |
| Clay Center Sheep and Goat Auction | R&D, White City |
| Concordia Tractor and Implement | Ralph Peterson |
| Council Grove Rotary | Rex Materials |
| Dairy Queen | Richard Lindgren |
| Dan Peterson | Santa Fe Ag Services |
| Diamond L Supply | Schrader Ranch |
| Emprise Bank | SSG Kirk A. Waymire, Jr., |
| Farmers and Drovers | 1st Armored Division, |
| Farmers Co-op Alta Vista | Baghdad, Iraq |
| Farmers State Bank | Tiffany Cattle Co |
| First Choice Meats | Tiffany, Inc. (Silage Harvesting) |
| Flint Hills REA | Tom Moxley for State |
| Hays House Restaurant | Representative |
| Herington Livestock | Tyner Insurance Group |
| Holm and Burton | US Premium Beef |
| JC Livestock | Valerie's Gifts and Such |
| Johnson Farms | Vernon and Beverly Bohn |
| | Wolf Creek Cattle Co. |
| | Zeller and Sons Farms |

We salute those businesses who have supported the 4-H youth of Morris County.

Thanks to the Auctioneers:
Carey Macy,
Steve Patterson,
Don Day,
Greg Hallgren and
Byron Bina

K-State brush management day set

Shrubs and trees are natural competitors with grasses and forbs on pasture and rangelands in Kansas. It is not practical nor recommended to control all woody vegetation. Woody plants have value to cattle and wildlife around streambanks and ravines, but excessive amounts of woody vegetation on grazing lands will reduce the livestock carrying capacity and should be controlled. Proper grazing will slow down woody plant invasion, but cattle do not consume large amounts of browse. Fire, chemical and mechanical control combined may be your best option.

On August 28, producers in East Central Kansas are invited to attend a Pasture Management Field Day to get a unique opportunity to see chemical and mechanical brush control options applied to trees in a pasture. The pasture is located 1 1/2 miles east of I-35 on K68 highway, near Ottawa. Registration will begin at

3:00 p.m. and the event will conclude at dark. An free evening meal will be served at 5:30 p.m. Brush control will be discussed and plots to be viewed will include basal bark, foliar, cut stump and soil applied treatments. Brush control equipment (shears, saws, etc.) will be demonstrated after the evening meal. For more information, contact Rod Schaub at the Osage County Extension Office, (785) 828-4438.

Prescribed burning is the primary means of woody

plant control on Flint Hills bluestem range. Burning native pastures late in the spring is best for controlling most brush species.

The amount of control is directly related to the size of the brush species, the amount of fuel on location (old grass), the weather, and the amount of stored energy in the brush species root. Red Cedar seedling are easily controlled with fire. However, burning three consecutive years or more

may be required to control species that re-sprout.

This field day near Ottawa will highlight 21 chemical and mechanical control plots. There are 7 cedar control plots, 6 cut stump plots, 4 basal bark applications and 4 foliar plots. If brush control is an interest or a need, you should mark your calendar and plan to attend. If you have questions feel free to call Rod Schaub, Osage County Extension Agent, at (785) 828-4438.



GSI
GRAIN BINS
ALL SIZES AVAILABLE
Hopper Bins Available
FINANCING AVAILABLE
Harder AG PRODUCTS
West Highway 50
PEABODY, KANSAS 66866
Phone 620-983-2158
www.grainbinsusa.com

The Buck Stops Here!

Remember, Farmers National Company is your one-stop-resource for land brokerage, auctions, appraisals, and real estate consulting services.

For all your real estate needs, call:
Monty Meusch, Area Sales Manager
(402) 496-3276 or (402) 679-6361
mmeusch@farmersnational.com

www.fincoutdoors.com
www.farmersnational.com

Farm Management • Real Estate Sales • Appraisal • Insurance
Consultation • Oil & Gas Management • Conservation & Recreation

STOP

Water from coming in your Basement or Grain Elevators

I will pump gel (Oilfield gel) under your floors and/or behind your wall to fill any space or crevice where water can creep into your basement or grain elevators. All work guaranteed.

DON'T WAIT.
CALL BILL NICHOLS WATERPROOFING NOW
1-800-215-0537
8 a.m.-6 p.m. Monday thru Saturday
*Free Estimates-No Excavating * Don't wait until it floods again *

and INJECTION

- DIESEL FUEL INJECTION
- TURBO CHARGERS
- SALES & SERVICE

THE DIESEL SPECIALISTS

901 N.E. HWY. 24, SUITE 101, TOPEKA, KS 66617
785-233-4535/800-234-0719
FAX 785-233-6943

LAND AUCTION

3 WASHINGTON COUNTY FARMS

SATURDAY, SEPTEMBER 6 — 10:00 AM

Mayberry's Restaurant
WASHINGTON, KANSAS

TRACT 1
166 acres, the SE 1/4 21-2-4 and that part of the SW 1/4 21-2-4 lying east of Mill Creek. Mill Creek bottom, upland cropland, native grass CRP, timber and wildlife habitat. Located between Hanover and Washington, in Charleston Township.

THE FERRELL FAMILY TRUST

TRACT 2
75 acres, the W 1/2 SW 1/4 18-3-5, 65 acres good upland cropland, the rest being waterways and farmstead. Located northwest of Barnes, in Little Blue Township.

THE FRUH LIVING TRUST

TRACT 3
84 acres, the part of the W 1/2 SE 1/4 20-2-2 lying south of the township road and the west 70 acres of the NE 1/4 29-2-2. Good native grass, very good fences, deep draws and excellent wildlife habitat. Located northwest of Morrowville, in Mill Creek Township.

TODD & TRACEY CROME

Terms on all 3 farms: Ten (10) percent down, the balance due in 30 days.

Real Estate Auction by Raymond Bott Realty & Auction
Auctioneers: Raymond Bott, Lee Holtmeier and Luke Bott
Washington, Kansas • 785-325-2734 or 747-8017
www.bottrealtyauction.com
Call or check our website for more details.

AUCTION

SATURDAY, AUGUST 23 — 10:00 AM

Herington Community Building
HERINGTON, KANSAS
10:00 AM SHOP, MISC. TOOLS

ANTIQUES/COLLECTIBLES; BB GUNS; JEWELRY AND WATCHES AFTER SHOP TOOLS.

See last week's Grass & Grain for complete listing.

Lunch by Burdick Relay for Life Cancer Crusade

SELLERS: IRVIN & AUDINE STRAND & WARREN & DODIE DIX

AUCTIONEERS: BOB KICKHAEFER
785-258-2880 OR 785-258-4188
DAVE BURES, 402-766-3743
Clerk/Cashier Bob's Auction Service

HERINGTON LIVESTOCK MARKET INC.

SALES EVERY WEDNESDAY HOGS AT 9:30 AM — CATTLE AT 10:30 AM

Results from Wednesday, August 13

FAT HOGS

Burlingame, 3 mix	268@59.00	Newton, blk	1285@56.75
Council Gr., 14 mix	244@58.00	Newton, blk	1285@56.75
Woodbine, 15 mix	249@58.00	Tampa, hol	1395@56.50
Burlingame, 10 mix	259@57.50	Lincolnville, bmf	1550@56.50
Emporia, 9 mix	282@57.50		
Eskridge, 2 mix	265@56.50		

Butcher bulls weighing 1065-2090 were selling \$69.75-\$80.25 per cwt.

Sows weighing 360-500 were selling \$34.00-\$44.00 per cwt.

Feeder pigs brought \$10.50-\$17.50 a head.

COWS

Marion, blk	955@92.00	Council Gr., 4 m	334@117.50
Council Grove, blk	1140@62.25	Council Gr., 4 b	379@116.50
White City, blk	1305@62.00	Alta Vista, 9 blk	482@115.75
Council Grove, blk	1285@61.00	L. Springs, 11 b	445@113.00
Enterprise, e rwf	1260@60.75	Marion, 14 mix	480@112.75
Hope, red	1340@60.75	Council Gr., 12 b	561@112.75
White City, blk	1470@60.50	Herington, 13 m	530@112.00
Marion, rwf	1275@60.25	Lincolnville, 15 m	576@112.00
Alta Vista, char	1400@60.25	Herington, 11 b	545@111.75
Marion, blk	1155@59.25	Woodbine, 93 blk	752@111.25
Hope, red	1245@58.75	Marion, 35 mix	572@109.75
Hope, red	1245@58.75	Herington, 10 blk	654@109.75
Hope, bmf	1675@58.25	Peabody, 4 mix	613@109.00
Hope, bwf	1675@58.25	Herington, 17 mix	661@108.00
Peabody, red	1070@58.00	Lincolnville, 13 mix	647@107.50
Peabody, wf	1220@57.75	Wilsey, 11 mix	637@107.25
Hope, red	1445@57.25	Herington, 20 blk	791@106.00
Carlton, hol	1465@57.00	Marion, 10 blk	727@105.50
		Wilsey, 7 blk	688@105.00
		White City, 5 blk	759@104.00
		Hillsboro, 6 mix	826@104.00
		Salina, 17 mix	734@100.00
		Reading, 9 blk	872@100.00

HEIFERS

STEERS

Alta Vista, 7 blk	495@128.00	Marion, 9 blk	741@117.50
Marion, 18 mix	532@124.50	Herington, 72 mix	780@117.00
Lincolnville, 5 mix	502@123.00	Wilsey, 10 mix	664@116.75
Herington, 4 mix	535@123.00	Hillsboro, 25 blk	777@116.50
Herington, 8 blk	619@123.00	Lincolnville, 6 char	742@115.85
Lincolnville, 5 mix	503@122.75	Hillsboro, 7 blk	814@115.35
Marion, 24 mix	653@122.35	Herington, 11 mix	682@115.25
Council Gr., 18 b	613@121.00	Burdick, 31 blk	787@115.00
White City, 8 blk	652@120.50	White City, 9 blk	814@115.00
Lincolnville, 9 char	622@119.25	Lincolnville, 17 mix	694@114.50
Lincolnville, 4 mix	693@119.25	Herington, 21 mix	700@113.75
Lincolnville, 11 blk	585@119.00	Herington, 16 red	817@113.75
Herington, 17 mix	711@119.00	Herington, 34 blk	810@112.75
Herington, 28 blk	739@118.50	Reading, 15 mix	885@111.75
Burdick, 13 blk	673@117.50	Reading, 15 mix	885@111.75
		Burdick, 62 mix	905@110.35

SPECIAL EARLY CONSIGNMENTS FOR WEDNESDAY, AUGUST 20

- 125 mixed steers & heifers, 725-850 lbs.
- 120 steers, 825-850 lbs.
- 52 mixed steers, 750 lbs.
- 60 mixed steers, 825 lbs.
- 65 mixed heifers, 825 lbs.
- 60 mixed steers, 850 lbs.
- 50 mixed steers, 750 lbs.
- 42 black heifers, 600-750 lbs.
- 17 mixed steers & heifers, 400-500 lbs.
- 29 mixed steers, 825 lbs.

Many more consignments by sale time.

Beginning September 3rd we will only have one hog sale each month. It will be the 1st Wednesday of each month at 10:30 AM

NEED PART TIME HELPER • MUST HAVE SOME KNOWLEDGE OF LIVESTOCK
APPLY AT OR CALL HERINGTON LIVESTOCK MARKET
785-258-2205 • 785-258-0226

TRACTORS

NH TM130, FWD, 295 hrs.	Bobcat 607 Backhoe
NH TS115A, C&A, FWD	Bobcat T190, Track
NH TS110, FWD, Cab	Bobcat 430 Mini. Ex, cab
NH TN65, 4WD, Open	Scat Track 1700C
NH TC21D	JD 325 Skid Steer
Ford 7700/Ldr.	JD CT332 CTL
Ford 7710, Cab, 2WD	Case 450
Ford 641	COMBINES & WAGONS
Ford 901/Ldr.	NH TR98, FWD
Ford 5000, Diesel	NH TR89, FWD
Ford 4000	Case 2388, FWD, 2004
Ford 3000	Case 2388, FWD, 1998
Ford Jubilee	Case 1660
Ford 8N	Brent 420 Cart
Case IH MXU130, MFD	PLANTERS & TILLAGE
Case MX115	Great Plains, NT
Case JX95, FWD, Ldr.	2 - IH 5100 Drills w/Hitch
Case 1030	Case IH 530B Ecolo Tiger
Case 1370	Kewanee 1020
Case 1690	JD 331 Disc
Allis Chalmers 200	Krause 41' field cultivator
JD 4320/Ldr	HAY TOOLS
JD 2640	NH BR780 R. Baler
JD 4630	NH 456 9' Sickle
MF 1135	JD 285 10' Discmower
IH H	JD 704 14Wh
IH 350U, Ldr.	Vicon 8Wh
Cat MT745	Case 8530 Sq. Baler
	Vermeer WR20 Rake
Bobcat S250	Vermeer WR22 Rake
Bobcat S185	Vermeer WR220 Rebel
Bobcat S175	Gehl 1710 Baler
Bobcat 773	Hesston 3982 12Wh

Emergency After Hours Parts

Planting, Haying & Combining
Call 816-724-1573

There will be a \$10.00 Service Charge for Fuel and Time

Visit us at: **www.earleytractor.com**
816-632-7277

Listen to Radio Market Reports on WIBW AM 580, KFRM AM 550, Every Wed., 8:00 a.m.
Barn Phone 785-258-2205 *Fax No. 785-258-3766

IF YOU HAVE LIVESTOCK FOR SALE OR APPRAISAL, CALL COLLECT.
Scott Miesse, Manager • 785-258-0226
Eugene Just - 620-382-3583 home • 620-382-6152 Cell
Gene Schafer - 620-732-3670 • 620-381-1292 Cell

Bob Kickhaefer - 785-258-2880
Dave Bures - 402-766-3743

EARLEY TRACTOR
Cameron, MO



Yard & Garden Tips

By Gregg Eystone

Back to gardening program

Labor Day typically means the end of summer. It also could mean the beginning of some landscape improvement. The first part of September is a great time to over-seed or plant a new lawn. Plant a new tree, divide perennials, identify beds for planting fall bulbs, plan a fruit garden, soil preparation and end of the season rose care are a few gardening considerations.

To assist you with your wanted fall gardening, the Riley County office of K-State Research and Extension

is hosting a "Back to Gardening" event on Wednesday, August 27. It will be from 6 p.m. to 9 p.m. in Pottorf Hall in CiCo Park. The Riley County Extension Master Gardeners are hosting this free learning opportunity with garden item giveaways and snacks being provided for the evening.

There will be three concurrent sessions every hour. At 6 p.m. you will need to decide if you need to learn about seeding a lawn, rose care or fruit gardening. Food prices are leading many to growing their own fruit and

the time to plan for spring planting is now. The rose is our national flower and many of our preferred roses need care going into the fall. Tall fescue is our preferred grass and seeding is typically the method used for planting.

Beginning at 7 p.m., there will be three new topics. In the Clover room will be information on soil preparation to ensure plant growth. Planting for the spring display of tulips, daffodils, hyacinths and more will be in the Wheat room. Continuing with the lawn

theme in the Konza room will be fall fertilizing and weed care.

The final programs at 8 p.m. include dividing perennials, trees for planting and mowing and watering to a healthy lawn. Participants are welcome to go and come as it fits their needs. Speakers include K-State Research and Extension staff, Riley County Extension Master Gardeners and industry professionals.

More information on this program and the topics can be found at www.riley.ksu.edu or call (785) 537-6350.

If you would like additional information on a horticulture topic, please contact Gregg Eystone at the Riley County office of K-State Research and Extension. Gregg may be contacted by calling (785) 537-6350 or stopping by 110 Courthouse Plaza in Manhattan or e-mail: geyeston@ksu.edu

Annual meeting in Council Grove

The Morris County Farm Bureau annual meeting will be held on Monday, August 25, at the Community Building at the fairgrounds located one mile east of Council Grove, starting at 6:30 p.m. There will be a BBQ Brisket Dinner prior to the meeting.

The meeting will be called to order by president Lisa Wainwright. Election of directors, presentation of awards, and drawing for door prizes will be the business of the evening. Milo Yield will be the featured speaker.

A baby sitting service will be provided during the meeting for small children. Morris County Farm Bureau Association members should contact Don Day at (620) 767-3004 for reservations.

MOT KAN VIDEO AUCTION

SELLING LOAD LOTS WEEKLY

SELLING COMMISSION: \$10.00 PER HEAD

FOR MORE INFO. CALL

OWNER JIM HERTZOG: 816-289-3011

REP. - BUCK ASHBY: 417-448-7912

56TH ANNUAL ESKRIDGE LABOR DAY RODEO

SUNDAY, AUGUST 31 — 7:00 PM

MONDAY, SEPTEMBER 1 — 2:00 PM

ENTRIES OPEN:
Monday, August 25
6 pm - 9 pm at 816-331-1792

MUGGIN' ENTRIES:
Anytime at 785-589-2572
\$50.00 per Team

Calf Scramble (12 & under)

Mutton Bustin

Starts at 6:00 PM on Sunday and 1:00 PM on Monday • Sign up half hour before start (70 lbs. & under \$10 per child)

Payback first four places • Up to 40 children per performance

ADVANCE TICKETS AVAILABLE AT:
RUSH-IN AND SOLOMON'S PORCH IN ESKRIDGE

ADULTS \$7.00 • CHILDREN UNDER 12: \$5.00

FAMILY PACKS AVAILABLE.

GATE: Adults, \$8.00 • Children under 12, \$6.00

STOCK PROVIDED BY C-R McKellips Rodeo Co.

We specialize in Trucks and Sport U's!

MILLER MOTORS

785-584-5850

OPEN Monday-Friday 9-8 Saturday: 9-6

REMEMBER! At Miller Motors No Reasonable Offer is Refused!

<p>'02 CHEVY SILVERADO Crew Cab HD, LT, 6.0 Vortec, AT, Leather, Loaded. \$8,988</p>	<p>'95 FORD F-250 Reg. Cab 4x4, XLT, V-8, AT, Loaded. \$3,995</p>	<p>'03 DODGE RAM 3500 4 dr., 4x4, SLT, Cummins Turbo Diesel, Fully Equipped! \$15,995</p>
<p>'06 CHEVY SILVERADO 2500 Reg. Cab 4x4, 6.0 Vortec, AT, Loaded. LOW MILES!</p>	<p>'92 GMC KODIAC EQUIPMENT HAULER! Great bed Low Miles! CALL TODAY!</p>	<p>'98 CHEVY 2500 SILVERADO Ext. Cab, 4x4, 350 Vortec, AT, LOADED! \$5,988</p>
<p>'05 CHEVY SILVERADO 2500 Reg. Cab 4x4, 6.0 Vortec, AT, Loaded. \$4,995</p>	<p>'04 DODGE RAM 2500 Reg. Cab, 4x4, SLT, only 50,000 miles, LOCAL ONE OWNER TRADE! \$15,988</p>	<p>'04 DODGE RAM 2500 4 Dr., 4x4, SLT, Cummins Turbo, Diesel, Completely Loaded, Low Miles! \$22,988</p>
<p>'05 CHEVY SILVERADO 1500 Crew Cab 4x4, LS, 5.3 Vortec, AT, Loaded, Low Miles! \$15,995 \$14,995</p>	<p>'01 CHEVY SILVERADO 2500 Quad Cab, 4x4, LS, Duramax Diesel, Allison AT, Loaded, Good Miles! \$16,995</p>	<p>'00 CHEVY SILVERADO 2500 Quad Cab 4x4, LS, 6.0 Vortec, AT, Loaded Up! Like New! \$11,988</p>
<p>'00 CHEVY SILVERADO 1500 Reg. Cab 4x4, LS, 5.3 Vortec, AT, Fully Equipped! Clean! \$8,988</p>	<p>'99 CHEVY SILVERADO 2500 Quad Cab, 4x4, LS, 6.0 Vortec, AT, Fully Equipped! \$8,995 \$5,995</p>	<p>'03 CHEVY SILVERADO 2500 Quad Cab 4x4, LS, Duramax Diesel, Allison AT, Fully Loaded, Clean! \$16,995 \$14,995</p>

"OVER 60 TRUCKS IN STOCK"

"NOW AVAILABLE!" New Flatbeds & Trailers

Visit our website: www.millermotors.biz

MILLER MOTORS - 225 W. Hwy. 24, Rossville, Kansas

For Sales Call: 785-584-5850

53rd ANNUAL LONGFORD PRCA RODEO

LONGFORD, KANSAS

SPONSORED BY: THE LONGFORD RODEO CLUB & LIONS CLUB, INC. AND THE LONGFORD COMMUNITY

FRIDAY & SATURDAY

Aug. 29 & 30, 2008

GRAND ENTRY 7:30 PM

Friday & Saturday WILD STEER SCRAMBLE

6 Standard PRCA Events

Saddle bronc * Bareback * Calf Roping * Steer Wrestling * Bull Riding * Team Roping * WPRO Barrel Racing

BACK BY POPULAR DEMAND: One Armed Bandit & Company

KIDS CALF SCRAMBLE, 1st, 2nd and 3rd Prizes
Friday Night, age limit, 9 years & under
Saturday Night, age limit, 12 years & under

BOYS & GIRLS BE SURE AND BRING YOUR ROPES AND BE READY WHEN CALLED

MUTTON BUSTIN' - BOTH NIGHTS
4-10 Years Old, maximum 60-lb. limit • Limit 15 each night

Friday Night - FREE BARBECUE
Serving begins at 6:00 p.m. w/price of Admission

Family Fun Day on Saturday
Kids Pedal Pull, Craft Show, Bake Sale, Kids Rodeo, Turtle Race, Kids Games & More

PARADE SATURDAY - 5:30 p.m.
sponsored by Lions Club

Saturday Night Dance With The Powder River Band
(Admission will be charged)

TICKET OUTLETS: ABILENE: Rittel's; CLAY CENTER: Ray's Apple Market, Mayo's, UAP; CONCORDIA: Concordia Auto Mart; LONGFORD: Coachlight Restaurant, Reed's Service; MILTONVALE: Citizens State Bank; MINNEAPOLIS: City Pharmacy, D & G Oil; SALINA: Horseman Headquarters, Vanderbilts; SOLOMON: Bush's Market; WAKEFIELD: Farmers & Merchants State Bank; MANHATTAN: Tractor Supply.

ADMISSIONS: High School & Adults - \$10; Children 12 & Under - \$5; All Children Under Grade School Age Admitted Free

Advance Tickets: High School & Adults \$8 - Children 12 & Under - \$3

WE ASSUME NO RESPONSIBILITY FOR ACCIDENTS

STOCK CONTRACTOR - RUMFORD RODEO CO., Abbyville, KS

Ag marketing sessions to be held across Kansas

The Kansas Department of Commerce, in conjunction with Kansas Resource Conservation & Development, will host four informational sessions to provide agriculture-based entrepreneurs, economic developers and business leaders an overview of assistance available from the Department's Agriculture Marketing Division.

The sessions will summarize the financial and technical assistance available through the Division, including grants, loans and educational opportunities, as well as value-added topics like niche marketing, specialty livestock production and agritourism. Specific Commerce programs to be discussed include: Simply Kansas Agritourism Attraction Development Loan Program Diversified Farm and Specialty Production Loan Program Agriculture Value Added Loan Program

The sessions are free and open to the public. Registration is not required. Snacks and beverages will be served.

"It's crucial that Kansas producers find new ways to process and market their

products," said Carole Jordan, Agriculture Marketing Division Director. "That's what value-added agriculture is all about."

The schedule for the four sessions is as follows: Monday, August 25: Memorial Building, 101 S. Lincoln, Chanute, 10 a.m.

Wednesday, August 27: Jackson County 4-H Building, 5th and Dakota, Holton, 10 a.m.

Thursday, August 28: American Legion Building, 2921 W. 12th Avenue, Emporia, 10 a.m.

Thursday, September 18: Location TBD, Concordia.

For more information, contact the Agriculture Marketing Division at (785) 296-3737 or agprod@kansascommerce.com.

REM Grain Vacs

BaleMax Bale Processors

Steiner Implement

SABETHA, KANSAS
785-284-2181

Why Settle for Less Than A WESTENDORF

Others Westendorf

- Patented Power Mount mounts itself while you stay on tractor.
- Patented Custom Adjust Bracket System
- Low Profile provides greater visibility on both 2 w.d. & 4 w.d. from 10 to 325 HP.
- Patented Snap Attach Quick Coupler hook up attachments from the seat of your tractor.
- Low Price and Superior Quality on tractors from 10 - 325 HP.
- Resale Value Westendorf quality often means \$1,000 plus in resale value over other loaders.

Don't allow yourself to settle for less than the best. Only WESTENDORF Loaders offer all these "superior features" at a low cost.

30 to 120 H.P.

LOW PROFILE
TA - 28



NORTONVILLE PARTS-SERVICE
Nortonville, KS 66060 • 913-886-2960

HOME & REAL ESTATE AUCTION

SATURDAY, SEPTEMBER 6 — 2:00 PM

AUCTION LOCATION: BURNS COMMUNITY BUILDING
BURNS, KANSAS

PROPERTY TO BE OFFERED IN 2 TRACTS

PROPERTY LOCATION: North of Burns, at 30th Road and 77 Highway then 3 miles East.

TRACT NO. 1: 16 acres m/l in NW corner of NE 1/4 of 26-22-5 consisting of a farmstead and outbuildings with 11.08 acres of brome pasture that can be grazed or hayed. House is 1176 sq. ft. living space at ground level. Has an 816 sq. ft. basement, unfinished.

Home has 2 bedrooms, large kitchen and dining area, one bathroom and living room. Home has central heat and air and all weather siding.

Taxes are approximately \$696.54. The exact legal description will be on the deed.

OTHER BUILDINGS: Property includes a very nice 40'x30' horse barn with 2 stalls and outside pens. Also an older shop and garage and other small buildings.

TRACT NO. 2: 144 acres m/l of native pasture in NE 1/4 of 26-22-5. Exact legal will be on the deed. The grass is all bluestem. Has a very good pond. No trees. Has good access on all weather road. A large grain bin in pasture, needs work. Mineral rights in tact.

Taxes are approximately \$460.62.

Sam Griffin Auction and Cline Realty & Auction are representing the seller. All financing arrangements must be made prior to auction. All statements made day of auction take precedence over printed material.

Call Sam Griffin at 620-382-7502 for showing or for more information.

For more information and photos, go to:
www.KansasAuctions.net

PROPERTY OF LAURA ROSE

SAM GRIFFIN AUCTION
SAM GRIFFIN AUCTION
RR 1, Box 145, Burns, KS 66840
Toll Free: 1-888-252-5603
Cell: 620-382-7502 • Home: 620-726-5877
Selling the Heartland
CLINE REALTY & AUCTION - JOHN CLINE, BROKER

Plan to attend the KPHA tour

Cattle producers are invited to attend the 2008 Kansas Polled Hereford Tour, Aug. 30-31 in Western Kansas. The first tour stop will be Sandhill Farms, owned by Kevin Schultz near Haviland at 10 a.m. on Aug 30.

At 1:30 pm, after lunch, the tour will arrive at Umberger Polled Herefords, owned by Greg Umberger of Rozel. Then at 3:15 p.m. at the tour will stop at Brannan and Reinhardt Polled Herefords, owned by Kent Reinhardt near Otis.

Participants will meet at 6:30 p.m. at the Hays VFW Hall for the evening. At 7 p.m. the 2008 KPHA Annual Meeting and Banquet will feature Hereford steak and dinner along with special speakers.

The tour will resume on Aug 31 at 8:30 a.m. visiting the Virgil J. Staab & Sons operation north of Hays. After viewing cattle and breakfast the tour will proceed to Pieper Polled Herefords at Palco. H-Bar Ranch, owned by Charlie and Darla Moore, will also have cattle on display. Participants can enjoy cattle and a meal during this stop.

To make your reservations contact Kim Schmidt, KPHA secretary/treasurer, at kansaspolledherefords@yahoo.com or (785) 363-7557.

purple wave auction®

UPCOMING AUCTIONS

THURSDAY, AUGUST 21 | 5 P.M.
MANHATTAN AREA CONSIGNMENT AUCTION
MANHATTAN, KANSAS

antiques, appliances, automobiles & automotive, boats, clocks, coins, electronics, framed prints, furniture, home improvements, household items, industrial, knives, lawn & garden, motorcycle apparel & helmets, music equipment, office supplies, powersports, retail displays, sporting goods, sports collectibles, tools, toys, trailers, and more

TUESDAY, AUGUST 26 | 10 A.M. MDT
EASTERN COLORADO MULTIPLE LOCATION INTERNET ONLY AUCTION

automobiles, car audio and automotive, computers, farm equipment and supplies, furniture, industrial, irrigation system and supplies, office supplies, powersports, tools and trailers

THURSDAY, AUGUST 28 | 10 A.M.
FARM/INDUSTRIAL SPRAYER/APPLICATOR INTERNET ONLY AUCTION

2001 Rogator 854 row crop sprayer, 2001 Rogator 854 row crop sprayer, 1999 Rogator 854, 2000 Terra Gator 8104 with air max material box, 2001 Terra Gator 8104 dry chemical applicator, 1988 Aggator Model 2004 Sludge Haul/Injector Field Applicator

WED., SEPTEMBER 10 | 4 P.M.
REAL ESTATE AUCTION

825 LEVEE DRIVE
MANHATTAN, KANSAS

2435 Edge Hill Road, Salina, Kan.
4 bedrooms, 2 1/2 baths on large wooded lot
Open House: Sun. Aug. 24, 1-4 p.m.

46 acres +/-, Flush Road, St. Gorege, Kan.

CENTRAL KANSAS AG AVIATION
STEVE DONOVAN
Cellular 785-366-0513 or Office 785-258-3649
P.O. Box 246
Herington, KS 67449
Located east of Herington at the Former Military Airfield

AUCTION

SATURDAY, AUGUST 23 — 10:00 AM

Franklin Co. Fairgrounds, CB Hall, 17th & Elm
OTTAWA, KANSAS

Guns, Indian Artifacts, Fishing, Canoe, Antiques & Collectibles

GUNS & BOWS: Browning 22 auto rifle #36650T47, unused in box, grade 1; Ithaca Model 72 .22 cal. Saddle gun # 72045708, in original box, looks to be unused; Winchester Model 70 30-06 Springfield #G1206957; Ithaca Model 37-12 ga. 2 3/4"; Ruger Model 10-12 carbine .22 LR #116-13179; Savage Arms .22 LR bolt action; Harrington Richardson Topper Model 158 #Ah226455, .410 3" full; WWII Japanese Nambu automatic pistol; Mossberg Model 835 Uti-Mag 12 ga, 28" barrel, 2 3/4", 3 1/2" w/3 chokes, fired maybe 5 times; Browning Nomad 541 bow; Browning Compound bow; American Archery Compound bow; Ben Pearson Compound bow; Friends of the NRA Trout fishing print 87/150 by Brett Smith; Remington Arms wood cartridge box.

CANOE: 15' American Fiberlite, fiberglass canoe.

FISHING: Trot line w/ over 100 hooks in box; fishing rods; fishing reels, South Bend, Pflueger, Shakespeare, Ambassador; fishing lures & tackle boxes, Heddon, Arbogast, Foss, South Bend, Clark, Pflueger; Shakespeare Wonder Rod fishing rod holder.

INDIAN ARTIFACTS: Indian artifacts; Indian baskets; Indian drums; Indian beads; Indian rug.

ANTIQUES/COLLECTIBLES: Brass & glass bank teller window dividers; 1934 Ford Pickup promo car; 1969 Plymouth Barracuda promo car; Amethyst glass Soda Fountain straw holder; "Boss" cow windmill weight, repaired; Rolls razor 1927 demo model razor strop in orig. metal case; Old condom tins; 6 Schoolhouse light fixture globes; tall amber glass light shades in orig. boxes; old lamps including Mission style, stained glass & marquetry; light shades & globes; old brass light fixtures & many pieces & parts; Mail Pouch Tobacco advertising thermometer; Minneapolis Moline adv. thermometer from Greeley; Old brass numbered cow ear tags; 40+ Bennett's Ice Cream flavor paper signs; 2 metal Bennett's Ice Cream signs; "Peepers" the clown stained glass window; group of crocks, Red Wing & advertising; Red Wing crock blue/grey band w/lid and bail; A. Moll Grocer Co. St. Louis MO. Advertising jug; 4 gal. Stoneware water cooler, no lid; 4 gal. Buckeye Churn; Monmouth Pottery 4 gal. crock; 2 gal Ruckels stoneware jug; misc. clock pieces & parts; Art Deco store shoe display table; Western saddle w/lots of tooling; English saddle; saddle rack; Great Old Horseshoe shaped mirror in carved frame; horn ashtray; collection of old horse curry combs; large group of old horse bits; 12 sets of long horns; calf weaners; Buffalo Dental MFG. receptacle horse muzzle; buggy steps; large box of old collector barbed wire, some rare; great old primitive sled; lots of old vintage paper items; old Hal-lowe-en witch pinata; primitive wood "Ashley Grain" scoop; Gulf oil display rack; Old Phillips 66 5 gal. oil can; Phillips 66, Quaker, Derby grease cans; old wood black & white whiskey crate; old hand painted tiles from France; Gopher trap "California Rocket"; Old "Drink Vess" beverage advertising clock; rock samples & crystals; Kaleidoscope w/Crystals & Dragon; trade tokens; S&P shakers; English Tinker ware lamp; duck decoys; Dun-Hot Jiffy Pop corn burner, works great; 5 scrapbooks full of hundreds of old advertising match covers; scrap book of old cattle info brochures & catalogs; bottle stoppers; beaded light bulb covers; Old "The Ball Jar" patent Nov. 30, 1858; 8 Old Celluloid advertising bill hooks from the 50's; lots of old picture frames; group of oil paintings by "Naddelle"; John Deere wind chime, license plate & sign; Old John Deere wrenches; Roosevelt posters; movie posters, Squad Car, Manhandles, Do Not Disturb; WWII dough boy helmet; early embroidered Chenille bird wall hanging; Cast Iron "Safe" bank; cast iron German Shepherd doorstep; cast iron doll furniture couch; cast iron bath tub feet; Wagner cast iron cornbread pans; cast iron hand water pump; cast iron cannon ball; cast iron Eagle Salesman's Sample stove utensils; cast iron "Arcade" toy car w/one for parts; cast iron "Jaeger" toy cement mixer, needs tile; cast iron table top vise & jack; Old levels & tools; Great old A.W. Miller patent cast iron mortise tool; misc. old cast iron pieces; King Craftsman Coronet in case; old brass fans, 1 Westinghouse Octagonal cage; 3 Art Deco "Advance" pattern adv. pieces; corkscrew/bottle cork set made of antler; USMC shoe stretcher; Wrights adv. tape display; Cyclone hand grass trimmers; RC Cola tin sign; 3' Birch bark canoe; bundle holder for thrashing; Cedar strip/oak canoe boat 4'; 2 prong bundle fork; old glass fire extinguishers; cow bells; old oak humidor w/slat shelves & beveled glass doors; Nuzman Lumber sign Ottawa KS; Duling Optical sign; Lots of misc. signs; Old costume jewelry; leather whips; Amana Freezers & refrigerators lighted sign; Karen Labarge Devil face jug-Dunning Green face jug & Rare 2002 Jamie Kale face jug, all from North Carolina; Copper Stearns coffee urn, 31 tall; 3 old RR lights, working; lots of old soda bottles, Dads, Coke, Hi-Q, Kravemor; old shooting gallery targets; 2 North Wind Face shelf brackets; group of old hardware and door knobs; wood chairs; 3 glass jars, made in Canada w/glass lids & marbles; scrap brass & copper; boxes of Amethyst glass tile pieces; old wood adv. crate Manewal Lange Crackers.

NOTE: Another Auction from an area estate. Partial listing, still sorting. Auction held inside AC building. Check website www.kansasauctions.net/griffin for full listing & pictures. Refreshments by Happy Trails Chuckwagon.

Terms: Cash or Check w/Positive ID. Not Responsible for Accidents or Loss.

GRIFFIN AUCTIONS
Ottawa, KS • 785-242-7891
BUDDY GRIFFIN AUCTIONEER **ALLEN CAMPBELL AUCTIONEER**
www.griffinauctions.net/griffin

BID NOW AT
www.purplewave.com

BENNETT AUTOPLEX INC.

651 S. OHIO - SALINA, KS
800-569-5653
 WE ARE PROFESSIONAL GRADE. www.bennettautoplex.com



2008 GMC SIERRA
 4x4, PS, PL SLE Trim
 MSRP: \$33,865 **NOW: \$26,995 OR 0% FINANCING***

QUALITY PRE-OWNED TRUCKS

- 2006 Chevrolet Z-71 35K
- 2006 Dodge Ram Diesel 26K
- 2005 GMC Sierra Diesel 9K
- 2005 Chevrolet Crew LT 41K
- 2005 Dodge Ram Reg. 17K
- 2005 Chevy 2500HD Diesel
- 2004 GMC 3500HD Diesel

*Rebates to dealer. Financing with approved credit. Not all customers may qualify for all rebates. Rebates may vary by make and model. See dealer for details. Offer ends 8-19-2008

2008 CHEVROLET SILVERADO
 4x4, PW, PL, 5.3 V8, Z-71
 MSRP: \$35,630 **NOW: \$28,395***
SAVE OVER \$7000! OR 0%*

2008 CHEVROLET 2500HD
 4x4 Duramax, Trailer Package
 MSRP: \$39,889 **NOW: \$32,995***

GREAT SELECTION OF USED TRUCKS
 2001 CHEVROLET 3500HD ... ONLY 39,000 MILES ... CHECK THIS OUT
WON'T LAST LONG! **CALL TODAY!**

- 2007 Chevy 2500HD Reg. 17K
- 2007 Chevy 1500 EXT 41K
- 2006 Chevy 2500HD Crew Duramax
- 2006 Chevy 1500 Crew 32K
- 2005 Chevy 3500HD Crew ... \$18,495
- 2005 Chevy 1500 Crew
- 2004 Chevy 2500HD Reg. 63K
- 2004 Chevy 2500HD Crew 62K
- 2004 Ford F150 EXT 42K
- 2004 Chevy 2500HD EXT 70K
- 2003 Ford F150 Reg. 70K
- 2002 GMC 1500 Reg. 89K

*Rebates to dealer. Financing with approved credit. Not all customers may qualify for all rebates. Rebates may vary by make and model. See dealer for details. Offer ends 8-19-2008

BENNETT AUTOPLEX-MINNEAPOLIS
 107 NORTH SHERIDAN, MINNEAPOLIS, KS
800-750-8282
 Chevrolet-Buick-Pontiac AN AMERICAN REVOLUTION www.bennettautoplex.com

Farmers & Ranchers

AUCTIONS EVERY MONDAY & THURSDAY

Selling Hogs & Cattle every Monday & Stocker-Feeder Cattle every Thursday

IN STOCK TODAY: Call 785-825-0211

- 1 - 7'x20' Metal Top Gooseneck Trailer
- 1 - 6'8"x24' Canvas Top Gooseneck Trailer
- 1 - 25' Contractor Flatbed Trailer with 5' Self Clean Dovetail • 1 - 750 lb. Trip Hopper Feeder

Receipts for the week totaled 4,336 cattle and 275 hogs. Butcher hog top on Monday was \$62.00. Compared with last week: Steers 650-750 lbs., \$1-\$2 lower; 750-800 lbs. \$1 higher; 800-950 lbs. \$1 lower. Heifers, 500-750 lbs. \$2-\$3 higher; 750-1,000 lbs. \$1-\$2 higher.

Livestock Commission Co., Inc. SALINA, KANSAS

SALE BARN PHONE: 785-825-0211

MONDAY — HOGS & CATTLE
 Hogs sell at 9:30 a.m. Cattle at 12:00 Noon. Selling calves and yearlings first, followed by Packer cows and bulls.

THURSDAY — CATTLE ONLY
 Selling starts at 10:00 a.m. Consign your cattle as early as possible so we can get them highly advertised.

— AUCTIONEERS —
 KYLE ELWOOD, GARREN WALROD & RUSTY TAYLOR

5 red, Lincoln 847 @ 107.25 15 mix, Durham 858 @ 106.75 8 mix, Minneapolis 954 @ 106.25 11 bkmx, Lincoln 960 @ 106.00 7 bkmx, Clyde 947 @ 105.25 4 mix, Durham 913 @ 104.00 2 blk, Beloit 960 @ 100.00	2 blk, Scandia 225 @ 310.00 1 bkmx, Wilson 210 @ 310.00 1 bwf, Assaria 220 @ 300.00
--	---

FALL BRED COWS

15 bkmx running age, Abbyville @ 1385.00 15 bwf running age, Abbyville @ 1385.00 3 bkmx running age, Solomon @ 1350.00 1 bwf running age, Abbyville @ 1325.00 pairs 5 bwf running age, Abbyville @ 1275.00 pairs 2 bwf running age, Randolph @ 1275.00 13 red running age, Randolph @ 1185.00 9 bkmx running age, Randolph @ 1150.00 2 bwf running age, Abbyville @ 1100.00 11 blk running age, Randolph @ 1085.00 1 bwf running age, Abbyville @ 1075.00 3 red running age, Randolph @ 1050.00	13 red, Scandia 1398 @ 65.50 13 blk, Scandia 1342 @ 63.75 1 blk, Randolph 1545 @ 63.50 1 bwf, Randolph 1245 @ 62.00 1 blk, Ellsworth 1355 @ 62.00 2 bwf, Wilson 1308 @ 61.50 1 blk, Hillsboro 1460 @ 61.50
--	--

HOLSTEINS

2 hol, Beverly 590 @ 90.00 5 hol, Inman 391 @ 85.00 13 hol, Minneapolis 437 @ 84.00 11 hol, Inman 476 @ 84.00 13 hol, Minneapolis 508 @ 83.75 6 hol, Hillsboro 448 @ 81.00 21 hol, Solomon 493 @ 80.50 12 hol, Solomon 418 @ 52.00	37 mix, Glasco 251 @ 62.00 16 wht, Manchester 234 @ 61.50 8 mix, Moundridge 262 @ 61.00 14 mix, Haven 259 @ 61.00 16 mix, Inman 243 @ 60.50 11 mix, Delphos 269 @ 60.00
---	--

BABY CALVES

2 bkmx, Wilson 260 @ 330.00 1 bkmx, Wilson 250 @ 330.00 1 blk, Scandia 235 @ 320.00	1 blk, Hutchinson 2050 @ 83.25 1 blk, Ellsworth 2070 @ 82.50 1 wfh, Minneapolis 2060 @ 82.25 1 blk, Geneseo 1985 @ 82.00 1 blk, Longford 1970 @ 82.00 1 blk, Geneseo 1975 @ 81.00
---	--

SOWS

1 wht, Miltonvale 665 @ 45.00 1 wht, Clay Center 640 @ 45.00 4 wht, Clay Center 583 @ 43.00 1 wht, Clay Center 545 @ 43.00 3 wht, Lehigh 600 @ 42.50 1 mix, Newton 560 @ 42.50	12 bkmx, Claflin 397 @ 139.50 9 bkmx, Claflin 463 @ 134.50 3 blk, Lincoln 415 @ 134.00 2 blk, Tescott 483 @ 130.75 3 blk, Brookville 458 @ 128.50 6 blk, Tescott 440 @ 128.00 1 red, Hillsboro 400 @ 127.00 6 bkmx, Longford 511 @ 126.00 3 blk, Russell 563 @ 125.50 6 blk, Tescott 513 @ 125.00 4 blk, Lincoln 516 @ 125.00 6 blk, Tescott 539 @ 124.00 59 mix, Marquette 627 @ 124.00 1 red, Brookville 510 @ 124.00 12 mix, Brookville 605 @ 123.50 11 mix, Ellsworth 610 @ 122.75 7 bkmx, Longford 634 @ 122.50 3 mix, Ellsworth 613 @ 121.00 7 mix, Wilson 631 @ 120.75 5 mix, Salina 603 @ 120.75 2 mix, Lincoln 620 @ 120.50 3 blk, Hoisington 702 @ 120.00 7 bkmx, Abilene 704 @ 119.50 73 mix, Marquette 703 @ 119.35 19 bkmx, Longford 711 @ 119.00 2 blk, Carlton 723 @ 118.50 19 mix, Emporia 725 @ 118.50 29 mix, Ellsworth 733 @ 118.50 72 bkmx, Salina 825 @ 115.00	72 bkmx, Salina 820 @ 115.00 15 mix, Ellsworth 820 @ 114.85 124 bkmx, Bison 803 @ 114.25 20 bkmx, Concordia 809 @ 114.10 68 rdmx, Salina 808 @ 114.00 10 blk, Carlton 847 @ 113.50 115 mix, Bison 836 @ 113.35 56 bkmx, Enterprise 933 @ 112.25 55 mix, Bison 919 @ 112.00 58 mix, Hope 928 @ 111.25 1 blk, Canton 935 @ 108.50 1 blk, Randolph 910 @ 108.00 1 red, Carlton 975 @ 108.00 5 mix, Randolph 944 @ 107.50
---	---	--

HEIFERS

2 bkmx, Wells 478 @ 117.50 5 blk, McPherson 482 @ 117.50 4 bkmx, Little River 508 @ 117.25 2 mix, Ellsworth 508 @ 117.00 3 mix, Salina 435 @ 117.00 17 mix, Hillsboro 559 @ 116.75 8 mix, Brookville 525 @ 116.50 4 blk, Salina 490 @ 116.00 2 char, Brookville 378 @ 116.00 3 bkmx, Canton 548 @ 115.75 24 mix, Lincoln 542 @ 115.50 8 blk, Longford 536 @ 115.50 3 blk, Russell 568 @ 115.50 24 blk, Hillsboro 601 @ 115.25 18 blk, Longford 632 @ 114.25 9 mix, Clyde 628 @ 113.85 2 bkmx, Assaria 655 @ 113.50 6 bkmx, Assaria 668 @ 112.25 10 mix, Carlton 719 @ 112.25 11 mix, Ellsworth 628 @ 112.00 25 mix, Burns 769 @ 111.50 64 bkmx, Salina 777 @ 111.10 116 bkmx, Sterling 778 @ 111.00 63 rdmx, Sterling 774 @ 110.75 24 bkmx, Durham 765 @ 110.50 9 mix, Ellsworth 719 @ 110.25 13 mix, Salina 744 @ 110.25 53 bkmx, Claflin 822 @ 108.75 25 bkmx, Salina 826 @ 108.50 190 mix, Durham 812 @ 108.50 64 mix, Sterling 843 @ 108.10 2 blk, Canton 813 @ 108.00	2 blk, Scandia 225 @ 310.00 1 bkmx, Wilson 210 @ 310.00 1 bwf, Assaria 220 @ 300.00
---	---

Early Consignments for Thursday, August 21st

220 black steers; 194 steers; 35 steers & heifers, 450-600 lbs.; 525 heifers, 725 lbs.; 171 heifers, 700-800 lbs.; 80 steers & heifers, 600-750 lbs.; 140 heifers, 750 lbs.; 24 steers, 750 lbs.; 64 steers, 825 lbs.; 130 steers, 800-825 lbs; 60 heifers, 725 lbs.; 15 steers, 900 lbs.

TO SELL AT 12:00 NOON

125 black fall bred cows, bred Sitz Alliance Angus bulls. 3 to 5 years old, start 8-27-08 for 53 days. 25 black fullbred cows, bred Power Genetics Angus bulls, start Sept. 5th, 3-5 years old

Many more consignments by sale time.

MONDAY, AUGUST 25TH

Doyle Land & Cattle: 100 black fall bred cows bred to Fink Angus bulls. Start Sept. 15th for 60 days, 6 to 10 year olds.

For Information or estimates, contact:

Mike Samples, Sale Mgr., Cell Phone 785-826-7884
Kyle Elwood, Asst. Sale Mgr., Home Phone 785-825-1598, Cell Phone 785-493-2901

Jim Crowther 785-254-7385 Roxbury, KS	Don Long 785-472-3927 Ellsworth, KS	Ron Bearnes 785-283-4757 Tescott, KS	Kenny Briscoe 785-524-4048 Lincoln, KS
---	---	--	--

1150 KSAL, Salina 6:45 AM - MON-FRI
 880 KRNV 8:40 AM - WED-THURS.
 550AM KFRM - 8:00 am, Wed.-Thurs.

LISTEN TO OUR MARKET BROADCAST

Check our listings each week on our website at www.farmersandrancherslivestock.com



Katie Gillmore exhibited the grand champion market hog at the McPherson County Fair. Michelle Schrag, left, won the breeding show. Gillmore was also the champion senior swine showman.



Janae Perkins, Miltonvale drove the champion market hog during the 2008 RVD-Cloud County Fair. Linda Richard of Citizens State Bank is also pictured who purchased the animal along with Ayres Insurance Agency, Miltonvale in the premium sale.

SWIHART Sales Company - Mist Sprayers

We offer a complete line of low volume mist blowers. Excellent for spraying: cattle, livestock, dairies, feedlots, flies & mosquitoes, as well as vegetables, vineyards, orchards, etc.

Large Selection High Performance American Made

Call for free brochure 785-754-3513 or 800-864-4595 • www.swihart-sales.com • 1240 County Road AA, Quinter, KS 67752

Free Shipping



Chandler Ladner, Argonia, was selected as the junior herdsman at the national junior Gelbvieh show held earlier this summer in North Carolina.

TARPS

Protect that valuable grain from wind and rain!

- Vinyl coated polyester tarps protect better and last 5 times longer than poly tarps.
- Get the size you need: custom sizes, shapes and colors.
- We also make replacement tarps for roll-over systems.

Give us a call: 1-888-825-5280
We also have sun shades and awnings

ASH ENTERPRISES, INC • SALINA, KS
1-888-825-5280

The Original Flatbed Bale Handler

HYDRABED
BY TRIPLE C. INC.

OPTIONS:

- ✓ Post Hole Digger
- ✓ Tool Boxes
- ✓ 3 Spool Valve
- ✓ Cake Feeder

Also: Flatbeds & Bale Spear Beds - **New & Used**

BEDS IN STOCK - INSTALLATION AVAILABLE

Boot Hill Sales

785-388-2245 Clay Center, KS 785-632-2632

ABSOLUTE LAND AUCTION

160 Acres — Farmland, Grass, Hunting Prospect
TUESDAY SEPTEMBER 2 — 7:00 PM
Auction will be held at the Ada Community Center

DIRECTIONS: From Ada, KS go approx. 6 miles north to the corner of 15th and Rifle.

LEGAL: E/2 of SE/4 and NW/4 of SE/4 and SE/4 of NE/4 of S. 32 T9 R5 West of the 6th principal meridian. Less road Right of Way.

TAXES: \$590.14 2008 Taxes will be prorated to the date of closing.

MINERAL RIGHTS: Intact and sell with the land.

DESCRIPTION: Tract contains approximately 160± acres w/ 61.6± acres of tilled ground with the balance in meadows pasture, and farm stead. There are several outbuildings on the property including a trailer house and old home. Power is accessible to the property; however, is currently disconnected at the meter. Property has a well which needs work. There is a pond on the property. The property is considered highly erodible and has little to no conservation work done. Currently the property is not in any government programs. Well suited for a hunting property.

POSSESSION: Property sells subject to tenants rights. Farmland is rented on 1/3 landlord share 2/3 tenant share. Tenant will put out the 2009 Wheat Crop with buyer to receive landlord share. Buyer will receive grass in 2009.

TERMS: \$10,000.00 down day of auction, sign a purchase agreement, and balance due on or before October 2, 2008. Title Insurance shared equally between Buyer and Seller. Property sold "as is", no warranties written or implied. All acreages deemed reliable but not guaranteed by Auction Company, Seller or FSA.

Eric Blomquist
Associate Broker / Auctioneer
785-820-1568 (cell) • 785-827-4799 (office)
eric@mweservices.com
715 N. 9th St. Ste 108, Salina, KS 67401
www.ucmweservices.com

United Country
Mid West Services, Inc.

AUCTION

SATURDAY, AUGUST 30 — 10:00 AM

Herington Community Building
HERINGTON, KANSAS
10:00 AM TOOLS & MISC. GARDEN

10-12 tables full of misc. tools, wrenches, hammers, files and tool boxes; 2 tables full of electric drills and saws, diff. sizes and makes, work; misc. group of motors; assorted containers of nails; ext. cords; old blow torches and metal shelving; Coleman lamp; lots of long handle garden and farm tools; grinders; lots of old drill bits and saw blades; caulking guns and cleanout snakes; table, box and floor fans; 220 window air cond.; 6500 amp portable 10 hp. generator; riding mowers and 10 or more push mowers, all work; pallet jacks; garden cart; wheel barrow; shop vacs; dollies; bicycle; plastic milk crates, many; large plastic storage containers; stepladders and creepers; weed eaters; fireplace utensils; humidifier; 1997 - 53 gal. water heater; several tables full of kitchen items and glassware; floor and table lamps; nice oak office desk; metal office desk; office chairs; several bedroom and living room sets; coffee and end tables; pictures and frames; 2 entertainment centers; 10 different makes and sizes of TV's, work; 7 microwaves; 3 fridges; 2 stoves; washers and gas/electric dryers and lots of other misc. items; hide-a-bed, sofa and other furniture.

All of these items and more from liquidation of thrift store. Seller living in another town asked to have his name withheld.

NOTE: All electric items and mowers do work unless stated otherwise day of auction. Lunch by Relay for Life Cancer Crusade.

AUCTIONEERS: BOB KICKHAEFER
785-258-2880 OR 785-258-4188
DAVE BURES, 402-766-3743
Clerk/Cashier Bob's Auction Service

Home of Marands Angus

McCurry

Angus Ranch

Don't miss your chance to own females like these!



McCurry Royal Lady 7122



McCurry Blackcapette 8031



Falcon Henrietta Pride 349R

Selling 60 lots out of donors like these!



For more information visit:
www.mccurryangus.com

To request a sale book call
The Angus Hall of Fame
(816) 532-0811

FEMALE PRODUCTION SALE

August 31, 2008 ★ 1 pm ★ Burrton, KS

McCurry Angus Ranch
11913 Illinois Avenue - Burrton, Kansas 67020
Phone: (620) 463-7752 John: (620) 727-5197 Email: mccurryangus@pixius.net

Gehl E-Series Skid Loaders

High Performance Farming.

- Innovative acoustical materials to reduce interior cab sound levels
- New higher operating load ratings—up to 2900 lbs. with optional counterweights
- Advanced, high-horsepower Deutz engines with in-cylinder glow plugs to improve cold weather starts, and auto-shutdown systems
- Exceptional hydraulic power for high breakout forces and outstanding attachment performance

DOVER
Schwant Tractor, Inc.
SW K-4 Hwy.
785-256-6242

MARYSVILLE
Bruna Implement Co.
Hwy. 36 E.
785-562-5304

SENECA
Seneca Implement Co.
Hwy. 36 West
785-336-2621

LINN
Kuhlman Implement
Main Street
785-348-5547

Continued from page 35

The soybeans had far and away the most bullish report on Tuesday, and the beans were up for the week, but they seemed to struggle even while the wheat and corn were higher. The November beans were 38 1/2 cents higher for the week, but were also 88 cents off of Thursday overnight session high.

Soybeans have a very bullish fundamental set up and it could get much more bullish down the road. In future crop reports it is very likely that we see a higher export estimate and possibly higher crush as well.

USDA is planning on and hoping for quite a bit of demand rationing this year and there is really no indication it will happen. Also, the big cut in yield may be a warning from USDA that the crop is not in that good of shape. An early freeze would be extremely bullish. Traders will take freeze scares very seriously, because we really can't stand the national average yield to be much lower.

We gained over \$2.00 in the choice boxed beef, but that wasn't enough to get \$101 for cattle this week. Futures sold off on Friday, which ate up all of the

week's gains plus 60 cents in the October LC. It is hard to say exactly whether it was the futures that held the cash market back or vice-versa, but either way it was disappointing.

The October LC went back to test the resistance at the 50-day moving average and failed, which could lead to a move back below \$104. Right now I would plan on a weak start on Monday.

Feeder cattle reversed lower after a strong start on Friday. Blame the weakness on the live cattle, because corn was nearly limit lower. We are starting to trade

below the 50-day moving average in the October feeders, but there is still trend line support below us. A failure of the trend line means we have to own put options again. The feeders need to see some strength in the deferred live cattle in order to move higher.

Schwieterman Marketing, L.L.C. specializes in risk management and cash grain and livestock marketing plans. For information on the markets or

our marketing service you can contact Bret Crofts at 888-437-9131 or bret@swebell.net.

The information contained herein is based on data obtained from recognized statistical services and other sources believed to be reliable. However, we have not verified such information and we do not make any representations as to the accuracy or completeness. Past results are not necessarily indicative of future results. All statements

contained herein are current opinions, which are subject to change. The risk of loss in trading commodity future contracts can be substantial. You should therefore carefully consider whether such trading is suitable for you in light of your financial condition, nor any opinion expressed shall be construed as an offer to buy or sell any futures or options on futures contracts



HUSQVARNA

- MOWERS
- CHAIN SAWS
- TRIMMERS
- BLOWERS

Call Us Now For The BEST DEALS!



THE RUSH IS ON.

OUTFIT YOUR RANGER AND RANGER RZR WITH PURE ACCESSORIES.

POLARIS SEASON TO RIDE

Vehicles depicted in action photography are ridden by professional riders in designated off-road areas. Polaris® RANGER RZR and RANGER general-purpose off-road utility vehicles are not intended for on-road use, public roads, or paved surfaces. Driver must be 16 years old or older with a valid driver's license. Passenger must be at least 12 years old and tall enough to safely grasp handholds and plant feet firmly on the floor. Always use seat belts and wear seat belt, helmet, eye protection, and protective clothing. Never carry more than one passenger or ride on public roads. Avoid excessive speeds/sharp turns, and be particularly careful on dirt terrain. Riding and alcohol/drugs don't mix. Follow all warnings/instructions in owner's manual and on product. ©2007 Polaris Industries Inc.

USED EQUIPMENT:

'97 Kawasaki 220 Bayou, grey \$1,000 (Duffer's)	'05 Polaris Sportsman 90, red/blk \$1,800 (Duffer's)
'04 Polaris Magnum 330 4x4, grey \$2,800 (Duffer's)	'07 Polaris Sportsman 800 EFI 4x4, msy oak camo, 26 mi. \$7,000 (Flint Hills Location)
'07 Polaris Sportsman 450 4x4, red/blk, 4406 mi. ... \$5,000 (Duffer's)	
'06 Polaris Sportsman 800 EFI, msy oak camo, 1700 mi. . \$7,500 (Duffer's)	

DUFFER'S
Repair & Supply
BERN, KANSAS
785-336-3901

www.duffersrepair.com



FLINT HILLS POWERSPORTS
7985 E. Hwy. 24, MANHATTAN, KS
785-539-6500



National Bio & Agro-Defense Facility

The Government Accountability Office (GAO) has stated that the NBAF should not be built on the US Mainland (May 2008).

Call the Department of Homeland Security (DHS) 1-866-501-NBAF (6223) and tell them you do not want it in Kansas. Calls are toll free and can be anonymous.

CALL NOW - TIME IS SHORT DEADLINE AUG. 25TH Don't Bring FMD to Kansas



Superior yields...season after season.

AGSECO Varieties Available Through These Associates:

Tom Pauly Farm
Conway Springs, KS
620-456-2832

Arrow Seed Co, Inc.
Broken Bow, NE
308-872-6826

Muddy Creek Seed Farms
Johnson, NE
402-868-6775

May Family Farms
Oberlin, KS
785-475-3606

Miller Seed Farms
Partridge, KS
620-567-3125

Paoli Farmers Coop
Paoli, CO
970-774-7234

F & J Farms
Goodland, KS
785-899-6467

Rezac Seed
Valaraiso, NE
402-784-3875

Anderson Seed
Odell, NE
402-766-3790

Ediger Farms
Meade, KS
620-873-2023

E & H Farms
Weskan, KS
785-943-5386

Ray Enterprises
Winfield, KS
620-221-3541

Maschmann Mills
Deshler, NE
402-365-4369

Hartter Feed & Seed
Sabetha, KS
785-284-2220

GG Freeman & Son
Texhoma, OK
580-423-7340

Baer & Nichepor Farms
Ness City, KS
785-798-2575

Ed Junior Farm
Bison, KS
785-356-2773

Wheatridge Farms
Edson, KS
785-890-2639

Every season AGSECO researches and produces the highest yielding wheat seed varieties on the High Plains. Count on AGSECO for disease-resistant, hardy wheat varieties adapted specifically to your growing region.

SANTA FE

- Good resistance to leaf rust
- Resistant to soil-borne mosaic
- Consistent Top Yield Variety
- High Protein

SHOCKER

- Good resistance to leaf rust
- Resistant to soil-borne mosaic
- High Protein
- Early maturity

WINTER HAWK

- Very good drought tolerance
- Good foliar disease resistance
- High yields, good test weight

PROTECTION

- Good drought tolerance
- Early maturity
- Very good yield potential
- A CLEARFIELD® Variety

AGSECO

Produced and Distributed By:

DeLange Seed House
Girard, KS • 620-724-6223
Sedgwick, KS • 316-772-5388

Johnston Seed
Enid, OK • 580-233-5800

Ohlde Seed Farm
Palmer, KS • 785-692-4555

Phillips Seed Farms, Inc.
Hope, KS • 785-949-2204

Sharp Brothers Seed
Healy, KS • 620-398-2231

Sipes Seed Sales
Manter, KS • 620-493-4693

Star Seed, Inc.
Osborne, KS • 785-346-5447

Taylor Seed Farms
White Cloud, KS • 785-595-3236

AUCTION

SATURDAY, AUGUST 23 — 9:31 AM

Sterl Hall, 619 N. Rogers — ABILENE, KANSAS

FURNITURE, COLLECTIBLES & MISCELLANEOUS ITEMS

Butcher block table with 4 chairs; side by side refrigerator; smooth top 30" black kitchen stove; microwaves; Maytag washer and dryer; drafting table; oak glass front hutch; large 2 door glass hutch; La-Z-Boy recliners; end tables; TV in cabinet; metal desks; filing cabinets; swivel chairs; small deep freeze; wash stand; dry bar cabinet; antique rocker; table with 4 upholstered chairs on rollers with leaf; coffee tables; chest of drawers; antique blanket chest; armoire; small desk; antique straight chair; sleeper sofa; VCR with remote; gun cabinet with keys; new electric skillet; many kitchen utility items; oak wall shelf; oak cedar chest; cedar chest; Corningware set; copper bottom pan set; baking dishes; ironing board & irons; walker; bed pan; stool riser; collectible whiskey bottles, Jayhawk; clothes; white

table linens; blankets; pillows; Singer sewing machines; typewriter; old trunks; electric ice cream freezer; card tables; radios; stereos; 8 track tapes; CD's in nice cabinet; floor lamp; table lamps; flower pots; magazine racks; phones; suitcases; step stool; metal shelves; trash cans; air purifier; water purifier; fans; cigarette lighters; new Coleman lantern; Kirby sweeper with attachments; humidifier; cassettes; VHS case holder; AM/FM cassette player; digital alarm clocks; **MANY, MANY MORE ITEMS TOO NUMEROUS TO MENTION.**

YARD, SHOP & FARM MISCELLANEOUS ITEMS

1982 Ford pickup; lawn chairs; sprinklers; garden hoses; garden tools; barbecue grill; rakes; shovels; car creepers; step ladders; 20 ft. fiberglass extension ladder; metal shelves; car trailer with steel floor; snow blower; weed eater; new 15 gallon air compressor; 3/8 ratchets; socket sets; many

grinders; buffers; sanders; Skill saws; bench grinders; service grinders; tool box on rollers; 16" tires; 2x4's, various sizes; Handyman jack; assorted bolt bins; 4" bench vises; electric drills and bits; many pipe wrenches; crescents; screw drivers; old barbed wire; pickup tool box; truck mirrors; 4 way wrenches; clay stones; 1 box shells; 2 boxes deer shells; tub of valve gasket covers; push lawn mower; lawn furniture; 6 rims for car or truck; riding mower tires; propane grill; Wobble box 750 MF; assortment of chains; rod weeder teeth & brackets; 16 JD header sprockets with 9 springs; fertilizer tubes, 4 groups of 6; header stopper for 750 MF; 3 header cyl for 750 MF; pulleys for 750 MF header; Speed King bump jack; V pulleys; hyd cyl's for machinery; 2 arms MF 750; packing wheel; 8 feeder house sieves 7720 JD; **MANY, MANY MORE ITEMS TOO NUMEROUS TO MENTION.**

Clerk/Cashier: Auction Company. Announcements made day of sale take precedence over printed material. Lunch served.

SELLER: CW WOODMAN

"Be Wise"...Select



ALLYN THOMPSON & RON SHIVERS AUCTION CO.

120 NE 14TH ST., P.O. BOX 356, ABILENE, KS 67410

PHONE: (785) 263-7488 • FAX: (785) 263-1973

EMAIL: rsrealty@ikansas.com

Visit our website: www.rsrealtyandauction.com



135 years of Angus heritage celebrated at Kansas Angus field day

The Kansas Angus Association will host its 2008 field day Sept. 27 in Victoria, in conjunction with a day of celebration of the heritage of Angus cattle and the 125th Anniversary of the American Angus Association. A daylong program is planned, and will include a historical perspective, featured speakers and a Certified Angus Beef® (CAB®) lunch. Area Angus breeders will also display cattle around the Grant Cemetery monument, which is located at 1st Street & Angus Drive.

The field day begins at 10 a.m., with cattle viewing. A formal program, along with the unveiling of the monument renovations, will follow lunch. The American Angus Association has been working closely to revitalize the monument that honors Grant and those first Angus bulls during this year ~ the 125th anniversary of the Association.

"In order to look to the future, we must study and celebrate the past," says Jim Shirley, vice president of industry relations, who spearheaded the project to

restore the monument and the cemetery where Grant is buried. "It is important to commemorate the beginning of our breed and to keep future generations of beef producers informed on how Angus in the U.S. got its humble start."

Historical tours are tentatively planned. The field day will conclude in late afternoon, allowing historians to visit more of the German settlement or attend Saturday evening

mass at Saint Fidelis Church, also known as the "Cathedral of the Plains," and one of the eight wonders of Kansas.

There is no registration fee to attend the tour, but preregistrations are appreciated to accurately plan for the meal. To preregister or for more information, contact Anne Lampe, Kansas Angus Association secretary, at (620) 872-3915 or e-mail her at kansasangus@wbsnet.org.

Using complementary forages has some advantages over range-only grazing

Kansas State University rangeland scientist Bob Gillen knows ranchers are looking at ways to be as efficient as possible.

Gillen, who is the head of K-State's Western Agricultural Research Centers, said one of the things beef producers should consider is to make complementary forages, as well as their native forages, available to their cattle.

He cited a study that looked at net returns, comparing the use of complementary forages with range-only grazing. It showed higher average costs of pro-

duction per cow at \$628 for animals that were grazed on complementary forages, versus \$504 per cow for animals grazed on range only. However, the gross income per cow grazed on complementary forages was \$757, compared with the range-only grazed cow's at \$566. The net return using complementary forages was \$9.50 per acre, versus \$3.08 when using range only.

In the study, the average costs of production were 77 cents per pound with complementary forages and 83 cents per pound with range-only grazing.

HR Home Resource, LLC

Commercial & Agricultural Building Packages

- | | |
|--|--------------------|
| - Roof Trusses | - Framing Packages |
| - Roof and Wall Metal Systems | |
| - 29 gauge PTD | \$92/sq |
| - 29 gauge Galvanized | \$79/sq |
| - 29 gauge PTD - 20-year Warranty | \$85/sq |
| - 29 gauge liner tin | \$80/sq |
| - 26 gauge PTD | \$102/sq |
| - Job-site delivery at no extra charge | |

Residential Projects from Remodels to New Construction

- | | |
|--------------------------|--------------------|
| - Roof and Floor Trusses | - Framing Packages |
| - Windows & Doors | - Roofing Packages |
| - Insulation | - Deck supplies |

555 Pony Express Hwy
Marysville, KS 66508
(3 miles west of Marysville on U.S. 36)

Call us for a free quote today!
(785) 562-1800

grassandgrain.com

Tree & Brush Free Ranch MULTI-LEVER LOPPER

WOLF Garten
Ideal for cutting cedar trees in pastures



• Coated blade • Lightweight aluminum handles — 28 1/4 inches long for long reach. Weight 4.1 lbs. • Slicing cutting action • Special leverage for effortless cutting • Cuts branches and trees up to 2 inches thick.

DICK'S RANCH SUPPLY

5562 Kiowa County Ave. 57, Belvidere, KS 67028
1-800-201-2351

Corral Plans - \$5 + \$2.98 P&H
Phone Orders Welcome
ALL MAJOR CREDIT CARDS WELCOMED!
Prices and Specifications subject to change without notice.

WESTFIELD Portable Grain Augers



Low Maintenance High Efficiency

GRAIN AUGERS NEW - IN STOCK

- Lo-pro Swing - Hopper**
10x71.....\$8,350.00
13x71.....\$12,750.00

- Load Out Augers**
8x36 EMD.....\$2,750.00

- Grain Cart**
510 Bu. w/roll tarp.....\$9,800.00

- Header Trailers**
20'.....\$2,275.00
26'.....\$2,600.00
26' tricycle front.....\$2,695.00
30'.....\$3,300.00

SPECIAL PRICE
TA45 Westendorf Loader

D & K Agri Sales

ODELL, NEBRASKA
Office: 402-766-3824 • Cell: 402-223-9297

RED SUNDAY

Open House/Cattle Sales Begin
August 31st 1:00 pm
BBQ 6:30 pm



JKC Strawberry 710 Grand Champion Red Angus Female Houston Stock Show 2008 Congratulations to the Jorgenson Family!

Red Angus, Shorthorn, Red Durham Steer, Heifer, and Bull Prospects



JK Cathy 708 Reserve Grand Champion Heifer Butler Co. Fair Congratulations Trent Wilkerson!

JK Emma Jane 702 Reserve Grand Champion Heifer Ottawa Co. Fair Congratulations Daryl Simmons! Purchased at Red Sunday 2007



Kurt and Paula Schwarz
20418 KS Hwy 7 LaCygne, KS
660-424-3422
913-757-2162
Jack and Karen Lindstrom
1/2 mile South of Hwy 7/Hwy 152 Jct. on Hwy 7

ESTATE LAND AUCTION

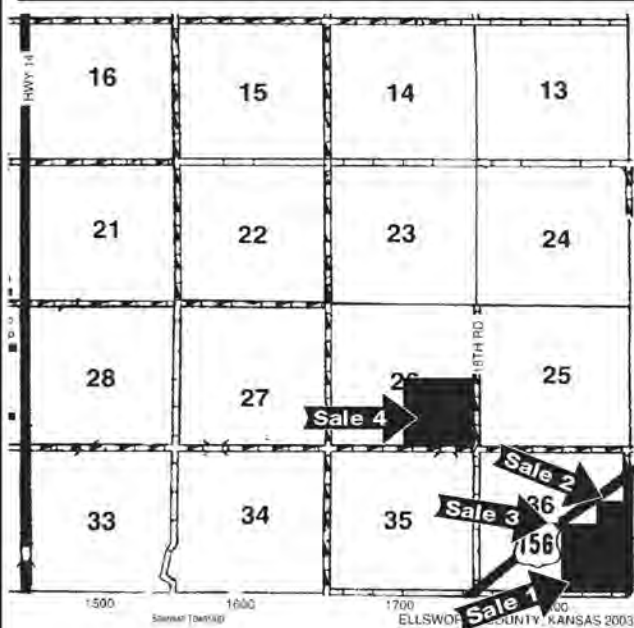
SHERMAN TOWNSHIP • ELLSWORTH CO, KS

342 ± ACRES PASTURE & CROPLAND AND DEVELOPMENT LAND

FRIDAY, AUGUST 29, 2008 • 10:00 AM SHARP

LOIS STROEDE ESTATE - SELLER

AUCTION LOCATION: Ellsworth American Legion Hall, E. Hwy 40, Ellsworth, KS



GS base, 37 bu. GS yield, 4 acre soybean base, 13 bu. soybean yield, 63.08 acres pasture, 4.66 acres brome, 3.2 acre abandoned farm yard with 42x60 Morton shed, storage shed, well with submersible pump, hydrants and small livestock corral with the balance being R/RW. Excellent access as Ave. F runs along the South side and 18th Rd. runs along the East side. Approx 7-1/2 mile NE of Ellsworth at the intersection of Ave. F & 18th Rd. There are approx. 79 acres planted to milo on this tract at the present time.

TAXES: for 2007 on Tract I, II & III were 768.36. Taxes on Tract IV were 797.96. Taxes for 2008 will be buyers responsibility.

MINERALS: Sellers interest is selling with Real Estate.

POSSESSION: Tract I will be on day of sale. Tract II & III will be on closing. Possession on Tract IV will be subject to tenants rights. Land planted to milo will be after milo is harvested with the tenant and Lois Stroede Estate retaining all the crop. All other land, pasture, farmstead and improvements will be on day of sale.

TERMS: 10% down day of sale. Balance due with certified funds when title insurance commitment showing Marketable Title is furnished. Purchaser to have 10 days to examine title insurance commitment. Expense of title insurance and escrow closing fees to be split between buyer and seller. Escrow agent will be Smoky Hill Title Co, Ellsworth, Kansas. Closing to be on or before September 26, 2008 at the law office of Sherman, Hoffman & Hipp in Ellsworth, Kansas. Purchaser will be required to sign purchaser's contract day of sale. All acreages were computed to the best of our knowledge. No guarantee of acreage is given by the F.S.A. office, Seller or by Victor Bros. Auction & Realty Inc.

INSPECTION: Each potential bidder is responsible for conducting their own independent inspection and due diligence concerning pertinent facts about the property. **Take a look for yourself or call Frank Princ at 785-658-7003 for showing.** Remember the auction is at the Ellsworth American Hall, E. Hwy 40, Ellsworth, KS at 10:00 am (sharp). Victor Bros. Auction & Realty Inc. are Seller's agent only. Any statement day of sale takes precedence over any oral or printed matter.

www.victorbros.com or www.GrassandGrain.com/victor

Victor Bros. Auction & Realty, Inc.

2505 Avenue E Box 5, Wilson, KS 67490
Phone (785) 658-2254 or 2255

FRANK L. PRINC, Auctioneer / Owner / Broker & Certified Appraiser
785-658-2254 or 2255

AUCTIONEERS • BROKERS • APPRAISERS

John Hlaus Associate Auctioneer
Shelly Whitmer Real Estate/Licensed Appraiser PH 785/658-5525
Vicki Kaiser Real Estate PH 620/587-2326
J.L. Kasper Associate Auctioneer

LAND LOCATIONS: All Tracts are located approx. 6 miles NE/4 of Ellsworth, KS on and near Hwy 156.

TRACT I: 168 ± acres - 6 mi NE of Ellsworth on Hwy 156
LEGAL DESCRIPTION: Fr SE/4 & SE/4 NE/4 36-14-8 lying South of Hwy 156 and West of Hwy 111, Ellsworth Co., KS

F.S.A. INFORMATION: 168 acres Farmland, 90.67 cropland, 5.43 acre WW, 96.85 acres wheatbase, 29 bu. wheat yield, .1 acres soybean base, 13 bu yield, 66.24 acres pasture with the balance being abandoned farm yard & RR/W. The pasture is watered by a natural spring. There is also a well located on the farm yard. Excellent access from Hwy 156 & Hwy 111.

TRACT II: 11.81 ± acres - 6 mi NE of Ellsworth on Hwy 156
LEGAL DESCRIPTION: Fr SE/4 NE/4 36-14-8 lying North of Hwy 156. This tract is all grassland with a small creek running through the East part. This tract would make an ideal homesite or small pasture with excellent access.

TRACT III: 5 ± acres - 5-3/4 mi NE of Ellsworth on Hwy 156.
LEGAL DESCRIPTION: Fr NW/4 SE/4 36-14-8 lying North of Hwy 156. This tract is mostly cropland with a small amount of grassland.
F.S.A. INFORMATION: 5.22 acres. farmland, 4.65 acres cropland, 3.55 acres wheat base, 29 bu. wheat yield, balance grassland & RR/W. This would make an ideal homesite. Rural water runs along the west side of this small tract. Excellent access from Hwy 156.

TRACT IV: 158 ± acres
LEGAL DESCRIPTION: SE/4 26-14-8
F.S.A. INFORMATION: 158 acres farmland, 79.32 acres cropland, 8.41 acres WW'S, 57.6 acres wheat base, 29 bu. wheat yield, 8.1 acre

WRAPS field days coming next week

August 26 and 27 have been set as the dates for the Rangeland and Pond Management workshops in Geary and Marion County. The tours are being organized by area Watershed Restoration and Protection Strategy (WRAPS) Projects including, Twin Lakes, Clarks Creek Melvern, Marion and Fall River and is sponsored by the Flint Hills RC&D. Both workshops will be identical in their content and will be provided free to the attendees.

The workshops will begin at 9:30 with registration followed by an impressive line up of speakers including: David Kraft, NRCS Area Rangeland Specialist, Dale Kirkham, Kansas Rural Center, and Dr. Harold Klaassen, retired KSU fisheries biologist. These experts will cover such topics as range improvements after a burn, gen-

eral range management tips and techniques, and managing ponds for livestock and wildlife benefits. Dr. Klaassen's book on Pond management will be provided to all attendees.

Contractors will have displays on site and there will be time for producers to visit with them and wander around the pasture. A free meal, compliments of the sponsor, will be provided at noon and door prizes will be awarded throughout the events.

The rangeland sites that have been chosen are some of the best examples of good management techniques in the area. The pasture owners will be available to answer any questions that you have regarding the history of the pastures and the management techniques that they have used to improve quality of their grazing lands.

Please contact the Clarks Creek WRAPS office at (785) 238-4251, the Twin Lakes WRAPS office at (620) 767-5111 or the Marion Lake WRAPS at (620) 382-2541 to make your reservations and get directions to the locations of the meetings. Reservations need to be in by August 22 to ensure that there are enough materials and food for everyone attending. Everyone is asked to bring a lawnchair as we will

be out in the pasture for the event.

These workshops will be excellent sources of information given by leading experts in their field as well and working cattlemen. Grass managers, livestock producers and fish and wildlife enthusiasts will all gain valuable insight into the best methods for managing their natural resources and everyone will get to enjoy a day in the Flint Hills.

Fall crops tour in Saline County

Central Kansas Extension District will host a Fall Crops Tour in Saline County on Tuesday, August 26 starting at 5 p.m. The tour features stops at plots of Roundup Ready soybean varieties, grain sorghum hybrids and dryland corn hybrids. Discussion will focus on agronomic practices for row crops, 2008 insect concerns, ALS herbicide resistant grain sorghum, and soybean population effects on yield. A sponsored meal will be served following the tour at St. Patrick's Catholic Hall in Gypsum. Please RSVP to the Central Kansas Extension District-Salina office at (785) 309-5850.

The first stop is at 5 p.m. at the Roundup Ready soybean variety and grain sorghum hybrid plots on the Clayton Short farm located 1 mile south of the Hwy K-4/Ohio St. intersection or 1 mile north of Assaria on Ohio St. Last stop will be at 6:30 p.m. at the dryland corn hybrid plot on ground farmed by Paul Karber located 1/4 mile south of Gypsum on Gypsum Valley Rd.

JC LIVESTOCK SALES INC.

Now All Wednesday Sales, Hogs 10 AM • Cattle 12 Noon

Representative sales for last week, August 14.

STEERS			HEIFERS		
4	293	130.00	12	487	118.50
14	560	125.50	9	478	115.25
3	645	122.50	23	537	114.00
16	628	122.00	13	702	112.75
16	635	121.75	16	748	112.00
8	690	118.75	16	713	111.00
26	675	117.75	15	697	110.75
15	748	117.25	6	739	109.75
66	789	114.75	14	658	109.00
63	859	114.50	16	699	108.75
36	783	114.00	Fat hog top was \$60.25		
55	919	114.00	PIGS		
62	854	114.00	23	60	29.50
60	931	112.75	42	63	29.00
14	935	112.00	60	46	26.75

SPECIAL EARLY CONSIGNMENTS FOR THIS WEDNESDAY, AUGUST 20

35 blk, bwf steers & heifers, 650-700 Buchman Ranch
 143 mixed steers, 875-925 L. Reich
 137 blk, bwf heifers, 750-775 R. Ryff
More consignments by sale time.

CLAY CENTER LIVESTOCK SALES INC.

Cattle sales Tuesday, 12:00 PM.

Results from Tuesday, August 12

STEERS			HEIFERS		
5	351	132.00	2	303	124.00
6	453	129.00	8	361	117.00
4	355	126.00	4	423	115.50
2	423	125.00	11	609	110.75
2	623	113.50	11	732	107.00
6	778	111.25	20	710	104.85
2	738	110.00	15	801	104.50

EARLY CONSIGNMENTS FOR TODAY, TUESDAY, AUGUST 19

25 black steers, 825-900
 35 mixed steers, 775-800 R. Kulp
More consignments by sale time.

EARLY CONSIGNMENTS FOR NEXT TUESDAY, AUGUST 26

15 black cross heifers, 700-800 lbs.; 20 Angus cows bred to Lyons Angus bulls, fall calves, start calving anytime, 5 years old to older cows.
More consignments by sale time.

CONSIGNMENTS FOR SEPT. 9TH SPECIAL APPRECIATION & ANNIVERSARY SALE

200 crossbred steers, 825-900 lbs.; 100 black steers, 850-900 lbs.; 50 black steers, 475-550 lbs., pre-vac.; 80 black cross steers, 800-850 lbs.; 20 crossbred steers & heifers, 500-600 lbs., weaned; 120 black cross steers & heifers, 450-550 lbs.; 100 black cross heifers, 775-850 lbs.
More consignments by sale time.

JUNCTION CITY, KANSAS • Barn Phone 785-238-1471

Junction City Field Reps: Jim Heine 785-765-3480, Alma
 Seth Lauer 785-949-2285, Abilene



HOWARD LANGVARDT KARL LANGVARDT
 785-238-8212 785-499-5434
 Cell: 785-761-5812 Cell: 785-499-2945

Clay Center, Ks • Barn Phone 785-632-5566

Clay Center Field Representatives: Lee Holtmeier 785-348-5468
 Tom Koch, 785-243-5124 Bruce Rogge, 785-692-4214
 Lance Lagasse, 785-262-1185

MITCH LANGVARDT
 785-238-1858
 Cell: 785-761-5814

LYNN LANGVARDT
 785-461-5143
 Cell: 785-761-5813



FEED **FEEDS**

"The Key To Successful Feeding"

How do you like your steak?
 Well done, rare, medium?
 Everybody has a personal choice.

How about your livestock feed?
 Same deal, everybody's situation is different, and we do cater to what you need and want.

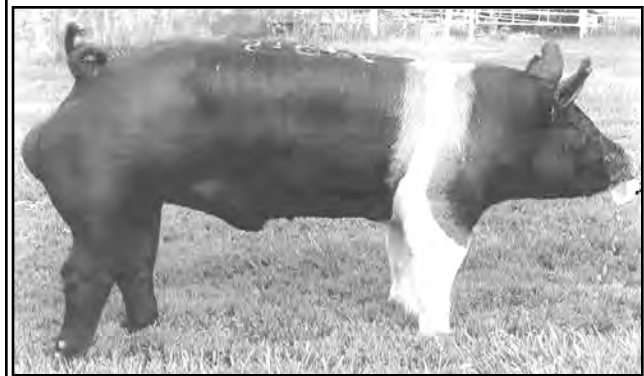
We will blend the supplements to complement your feedstuffs ... you name it, we can balance your ration.

Call Us Now so we can help you maximize your feedstuffs, livestock productivity and greenbacks in your pocketbook!

FOURTH & POMEROY ASSOCIATES, INC.
 Joseph Ebert, General Manager
 P.O. Box 516, Clay Center, KS 67432
 785-632-2141 • WATS 1-800-432-7423

Kansas Purebred Swine Breeders Show & Sale
 Saturday, August 23, 2008
 Saline County Fairgrounds, Salina, Kansas
 Show 4:00 pm • Sale 6:00 pm

14 Boars and 30 Gilts Consigned
 DUROCS, HAMPSHIREs, SPOTS, YORKSHIREs
 AND SHOW PIG MAMAS



Auctioneer: Craig Heinen

Consignors:

- Mike & Debbie Bond.....785-456-7955
- Robert Fink.....785-456-7955
- Leonard Frantz.....620-947-5915
- Ron Holling.....785-346-2429
- John Menefee.....913-849-3252
- Casey Olson.....785-539-4955
- PrairieLand Genetics.....785-539-5268
- Wehner Farms.....785-771-2579
- Cletus Young.....785-494-2791

For additional information, call Robert Hines
 785-539-5268 or Shirley Olson, 785-539-4955
 Not responsible for accidents.

Get on board with **SIMS** for the lowest prices around!

We can teach you all about saving money on farm chemicals and fertilizer!

Delivery Available * On-Staff Agronomist

Now offering discounts on semi loads of Glyphosate * Limited Supply*

Priced to Move: Pyrethroids

Don't Forget to let us bid on your seed needs.

Come see our newly expanded offices!

SIMS Fertilizer & Chemical Company
 Osborne, KS • 800-821-4289
 visit us at www.simsfarm.com

