

## AL PLUS™ Series UHF Television Antennas Low and Medium Power

### Features/Benefits

- Light weight, low wind load
- Side mounted antenna configuration
- Slot covered for environmental protection: long life, low maintenance, and reliability
- Optional fully enclosed and pressurized radome available for severe environments
- Horizontally, elliptically, and circularly polarized models available
- Quick, low-cost installation
- Omnidirectional and five (5) standard directional azimuth pattern available
- Up to 10 kW DTV input power rating
- 8- and 12-bay models
- Multi-channel versions available



The AL PLUS™ Series antennas are available in eight and twelve bay models and in a variety of azimuth patterns. The antenna is a coaxial slotted array design that yields excellent azimuth and elevation pattern performance. Models are available with horizontal, circular, and elliptical polarization. The AL PLUS™ UHF television antenna line satisfies the antenna requirements of many Part 74 television translators, low power and Class A television stations and single frequency networks. The antenna is a compact, end fed, design that includes a radome slot cover for icing and moisture protection. The AL PLUS™ is available in 8 and 12 bay model and versions have been developed for low and medium power applications. The antenna is suitable for either analog or digital broadcast applications.

All AL PLUS™ Series UHF television antennas are shipped with 15-inch (381 mm) standoff brackets for mounting on poles or tower legs from 1.5-inches (35 mm) to 7.5-inches (191 mm) OD. Standoff support pipes, face mount brackets, and mounts for larger diameter poles are available from ERI as optional items. Please contact ERI for a proposal for these requirements.

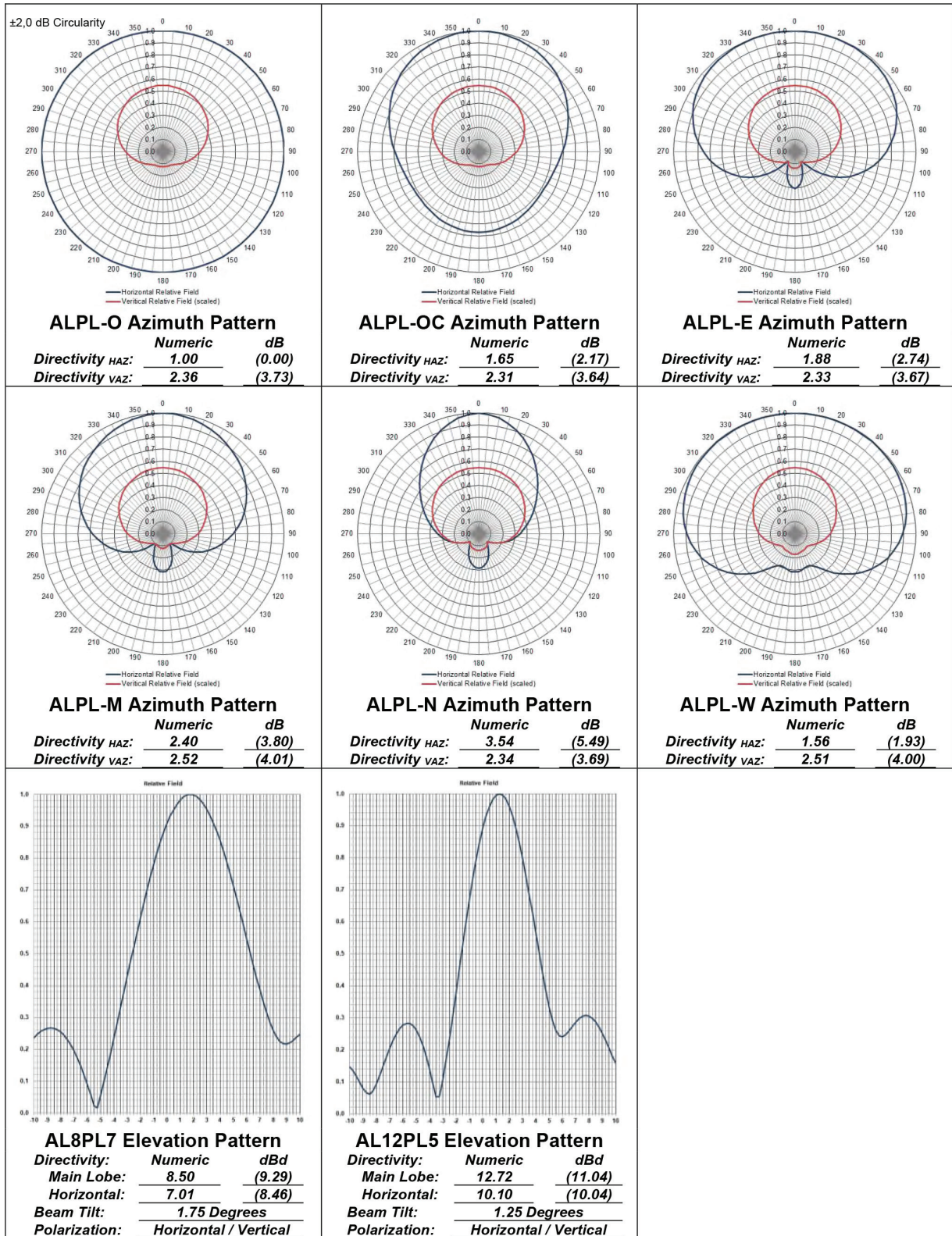
### Part Number Definition for AL PLUS™ Series Antennas

		<u>AL" a " " b " - " c " - P " d " " e "</u>	
a =	Number of Bays	8	8-Bay (AL8L7)
		12	12-Bay (AL12L5)
b =	Azimuth pattern	Blank	Omnioid (AL8-P)
		E	Extended Cardioid (AL8E-P)
		M	Medium Cardioid (AL8M-P)
		N	Narrow Cardioid (AL8N-P)
		O	Omnidirectional (AL8O-P)
		W	Wide Cardioid (AL8W-P)
c =	Channel Number	US Channels = 14 to 51	
		European Channels = 14E to 49E	
		Australian Channels = 14A to 52A	
d =	Power Handling	L = 6-kW Average Power	
		M = 10-kW Average Power	
e =	Polarization	Blank	Horizontal
		C	Circular
		E	Elliptical

# AL PLUS™ Series UHF Television Antennas

## Low and Medium Power

### AL PLUS™ Series Circularly/Elliptically Polarized Antenna Patterns



# AL PLUS™ Series UHF Television Antennas

## Low and Medium Power

### AL PLUS™ Circularly and Elliptically Polarized UHF Television Antenna Specifications

		AL8 PLUS	AL12 PLUS	
<b>General Specifications</b>				
Mount:			Side	
Number of Bays:		8	12	
Slot Cover Height:		3.5 in. (89 mm)		
Slot Cover Color:		Gray		
Ingress Protection Rating (IEC EN 60529):		IP56		
<b>Electrical Specifications</b>				
Band:		UHF		
Polarization:		Elliptical		
<b>Azimuth Pattern</b>				
<b>Peak Gain (Elliptically Polarized, Vertically Polarized ERP equals 30% Horizontally Polarized ERP):</b>	E	Horizontal	12.87 numeric (11.09 dBd)	19.25 numeric (12.85 dBd)
		Vertical	3.86 numeric (5.87 dBd)	5.78 numeric (7.62 dBd)
	M	Horizontal	15.87 numeric (12.00 dBd)	23.74 numeric (13.76 dBd)
		Vertical	4.76 numeric (6.78 dBd)	7.12 numeric (8.53 dBd)
	N	Horizontal	20.70 numeric (13.16 dBd)	30.97 numeric (14.91 dBd)
		Vertical	6.21 numeric (7.93 dBd)	9.29 numeric (9.68 dBd)
	O	Horizontal	7.54 numeric (8.77 dBd)	11.29 numeric (10.53 dBd)
		Vertical	2.26 numeric (3.55 dBd)	3.39 numeric (5.30 dBd)
	OC	Horizontal	11.55 numeric (10.63 dBd)	17.28 numeric (12.38 dBd)
		Vertical	3.47 numeric (5.40 dBd)	5.19 numeric (7.15 dBd)
	W	Horizontal	11.30 numeric (10.53 dBd)	16.91 numeric (12.28 dBd)
		Vertical	3.39 numeric (5.30 dBd)	5.07 numeric (7.05 dBd)
Beam Tilt, Degrees:		1.75-degrees	1.25-degrees	
Feed Configuration:		End		
Antenna VSWR, Maximum:		1.10 over 6 MHz channel		
RF Input:	Low Power	1-5/8-inch 50-ohm EIA Male		
	Medium Power	3-1/8-inch 50-ohm EIA Male		
Power Rating,	Low Power	6.0 kW		
	Medium Power	10.0 kW		
RF Channel:		14 to 36		
Average:				

Average power rating for DVB-T, DVB-M, and ATSC operation up to 608 MHz (RF Channel36). Contact ERI for other digital television systems and if operation at higher RF channels is required.

All AL PLUS™ Series UHF television antennas are shipped with 15-inch (381 mm) standoff brackets for mounting on poles or tower legs from 1.5-inches (35 mm) to 7.5-inches (191 mm) OD. Standoff support pipes, face mount brackets, and mounts for larger diameter poles are available from ERI as optional items. Please contact ERI for a proposal for these requirements.

The IEC Test Standard EN 60529 outlines an international classification system for the sealing effectiveness of enclosures of electrical equipment against the intrusion into the equipment of foreign objects (i.e. tools, dust, fingers) and moisture. This classification system uses the letters "IP" ("Ingress Protection") followed by two digits. The first digit of the IP code indicates the degree that persons are protected against contact with moving parts (other than smooth rotating shafts, etc.) and the degree that equipment is protected against solid foreign bodies intruding into an enclosure. The second digit indicates the degree of protection of the equipment inside the enclosure against the harmful entry of various forms of moisture (e.g. dripping, spraying, submersion, etc.)

# AL PLUS™ Series UHF Television Antennas

## Low and Medium Power

### AL PLUS™ UHF Television Circularly and Elliptically Polarized Antenna

#### Mechanical Specifications - Weight

RF Channel	AL8 PLUS Weight				AL12 PLUS Weight			
	Antenna Only		1/2-inch Radial Ice		Antenna Only		1/2-inch Radial Ice	
	<b>O and OC Azimuth Pattern</b>							
14	192 lbm	(87.1 kg)	292 lbm	(132.6 kg)	253 lbm	(114.6 kg)	384 lbm	(174.2 kg)
15	192 lbm	(87.1 kg)	292 lbm	(132.3 kg)	253 lbm	(114.6 kg)	383 lbm	(173.9 kg)
16	192 lbm	(87.1 kg)	291 lbm	(132.1 kg)	253 lbm	(114.6 kg)	383 lbm	(173.6 kg)
17	192 lbm	(87.1 kg)	291 lbm	(131.9 kg)	253 lbm	(114.6 kg)	382 lbm	(173.3 kg)
18	192 lbm	(87.1 kg)	290 lbm	(131.7 kg)	253 lbm	(114.6 kg)	381 lbm	(172.9 kg)
19	192 lbm	(87.1 kg)	290 lbm	(131.5 kg)	253 lbm	(114.6 kg)	381 lbm	(172.6 kg)
20	192 lbm	(87.1 kg)	289 lbm	(131.3 kg)	253 lbm	(114.6 kg)	380 lbm	(172.3 kg)
21	192 lbm	(87.1 kg)	289 lbm	(131.0 kg)	253 lbm	(114.6 kg)	379 lbm	(172.0 kg)
22	192 lbm	(87.1 kg)	288 lbm	(130.8 kg)	253 lbm	(114.6 kg)	378 lbm	(171.7 kg)
23	192 lbm	(87.1 kg)	288 lbm	(130.6 kg)	253 lbm	(114.6 kg)	378 lbm	(171.4 kg)
24	192 lbm	(87.1 kg)	287 lbm	(130.4 kg)	253 lbm	(114.6 kg)	377 lbm	(171.0 kg)
25	192 lbm	(87.1 kg)	287 lbm	(130.2 kg)	253 lbm	(114.6 kg)	376 lbm	(170.7 kg)
26	192 lbm	(87.1 kg)	287 lbm	(130.0 kg)	253 lbm	(114.6 kg)	376 lbm	(170.4 kg)
27	192 lbm	(87.1 kg)	286 lbm	(129.8 kg)	253 lbm	(114.6 kg)	375 lbm	(170.1 kg)
28	192 lbm	(87.1 kg)	286 lbm	(129.5 kg)	253 lbm	(114.6 kg)	374 lbm	(169.8 kg)
29	192 lbm	(87.1 kg)	285 lbm	(129.3 kg)	253 lbm	(114.6 kg)	374 lbm	(169.4 kg)
30	192 lbm	(87.1 kg)	285 lbm	(129.1 kg)	253 lbm	(114.6 kg)	373 lbm	(169.1 kg)
31	192 lbm	(87.1 kg)	284 lbm	(128.9 kg)	247 lbm	(112.1 kg)	367 lbm	(166.3 kg)
32	192 lbm	(87.1 kg)	284 lbm	(128.7 kg)	247 lbm	(112.1 kg)	366 lbm	(166.0 kg)
33	192 lbm	(87.1 kg)	283 lbm	(128.5 kg)	247 lbm	(112.1 kg)	365 lbm	(165.7 kg)
34	192 lbm	(87.1 kg)	283 lbm	(128.3 kg)	247 lbm	(112.1 kg)	365 lbm	(165.4 kg)
35	192 lbm	(87.1 kg)	282 lbm	(128.0 kg)	247 lbm	(112.1 kg)	364 lbm	(165.0 kg)
36	192 lbm	(87.1 kg)	282 lbm	(127.8 kg)	247 lbm	(112.1 kg)	363 lbm	(164.7 kg)
	<b>E, M, and N Azimuth Pattern</b>							
14	215 lbm	(97.4 kg)	330 lbm	(149.8 kg)	286 lbm	(129.9 kg)	441 lbm	(200.0 kg)
15	215 lbm	(97.4 kg)	330 lbm	(149.5 kg)	286 lbm	(129.9 kg)	440 lbm	(199.7 kg)
16	215 lbm	(97.4 kg)	329 lbm	(149.3 kg)	286 lbm	(129.9 kg)	440 lbm	(199.4 kg)
17	215 lbm	(97.4 kg)	329 lbm	(149.1 kg)	286 lbm	(129.9 kg)	439 lbm	(199.1 kg)
18	215 lbm	(97.4 kg)	328 lbm	(148.9 kg)	286 lbm	(129.9 kg)	438 lbm	(198.7 kg)
19	215 lbm	(97.4 kg)	328 lbm	(148.7 kg)	286 lbm	(129.9 kg)	437 lbm	(198.4 kg)
20	215 lbm	(97.4 kg)	327 lbm	(148.5 kg)	286 lbm	(129.9 kg)	437 lbm	(198.1 kg)
21	215 lbm	(97.4 kg)	327 lbm	(148.2 kg)	286 lbm	(129.9 kg)	436 lbm	(197.8 kg)
22	215 lbm	(97.4 kg)	326 lbm	(148.0 kg)	286 lbm	(129.9 kg)	435 lbm	(197.5 kg)
23	215 lbm	(97.4 kg)	326 lbm	(147.8 kg)	286 lbm	(129.9 kg)	435 lbm	(197.1 kg)
24	215 lbm	(97.4 kg)	325 lbm	(147.6 kg)	286 lbm	(129.9 kg)	434 lbm	(196.8 kg)
25	215 lbm	(97.4 kg)	325 lbm	(147.4 kg)	286 lbm	(129.9 kg)	433 lbm	(196.5 kg)
26	215 lbm	(97.4 kg)	324 lbm	(147.2 kg)	286 lbm	(129.9 kg)	433 lbm	(196.2 kg)
27	215 lbm	(97.4 kg)	324 lbm	(147.0 kg)	286 lbm	(129.9 kg)	432 lbm	(195.9 kg)
28	215 lbm	(97.4 kg)	324 lbm	(146.7 kg)	286 lbm	(129.9 kg)	431 lbm	(195.6 kg)
29	215 lbm	(97.4 kg)	323 lbm	(146.5 kg)	286 lbm	(129.9 kg)	430 lbm	(195.2 kg)
30	215 lbm	(97.4 kg)	323 lbm	(146.3 kg)	286 lbm	(129.9 kg)	430 lbm	(194.9 kg)
31	215 lbm	(97.4 kg)	322 lbm	(146.1 kg)	281 lbm	(127.5 kg)	424 lbm	(192.1 kg)
32	215 lbm	(97.4 kg)	322 lbm	(145.9 kg)	281 lbm	(127.5 kg)	423 lbm	(191.8 kg)
33	215 lbm	(97.4 kg)	321 lbm	(145.7 kg)	281 lbm	(127.5 kg)	422 lbm	(191.5 kg)
34	215 lbm	(97.4 kg)	321 lbm	(145.5 kg)	281 lbm	(127.5 kg)	421 lbm	(191.2 kg)
35	215 lbm	(97.4 kg)	320 lbm	(145.2 kg)	281 lbm	(127.5 kg)	421 lbm	(190.8 kg)
36	215 lbm	(97.4 kg)	320 lbm	(145.0 kg)	281 lbm	(127.5 kg)	420 lbm	(190.5 kg)

# AL PLUS™ Series UHF Television Antennas

## Low and Medium Power

### AL PLUS™ UHF Television Circularly and Elliptically Polarized Antenna Mechanical Specifications -

RF Channel	Antenna Only W Azimuth Pattern		AL8 PLUS Weight		AL12 PLUS Weight			
			1/2-inch Radial Ice		Antenna Only	1/2-inch Radial Ice		
14	215 lbm	(97.4 kg)	338 lbm	(153.1 kg)	286 lbm	(129.9 kg)	452 lbm	(205.1 kg)
15	215 lbm	(97.4 kg)	337 lbm	(152.9 kg)	286 lbm	(129.9 kg)	451 lbm	(204.8 kg)
16	215 lbm	(97.4 kg)	337 lbm	(152.7 kg)	286 lbm	(129.9 kg)	451 lbm	(204.5 kg)
17	215 lbm	(97.4 kg)	336 lbm	(152.5 kg)	286 lbm	(129.9 kg)	450 lbm	(204.1 kg)
18	215 lbm	(97.4 kg)	336 lbm	(152.3 kg)	286 lbm	(129.9 kg)	449 lbm	(203.8 kg)
19	215 lbm	(97.4 kg)	335 lbm	(152.1 kg)	286 lbm	(129.9 kg)	449 lbm	(203.5 kg)
20	215 lbm	(97.4 kg)	335 lbm	(151.8 kg)	286 lbm	(129.9 kg)	448 lbm	(203.2 kg)
21	215 lbm	(97.4 kg)	334 lbm	(151.6 kg)	286 lbm	(129.9 kg)	447 lbm	(202.9 kg)
22	215 lbm	(97.4 kg)	334 lbm	(151.4 kg)	286 lbm	(129.9 kg)	447 lbm	(202.5 kg)
23	215 lbm	(97.4 kg)	333 lbm	(151.2 kg)	286 lbm	(129.9 kg)	446 lbm	(202.2 kg)
24	215 lbm	(97.4 kg)	333 lbm	(151.0 kg)	286 lbm	(129.9 kg)	445 lbm	(201.9 kg)
25	215 lbm	(97.4 kg)	332 lbm	(150.8 kg)	286 lbm	(129.9 kg)	444 lbm	(201.6 kg)
26	215 lbm	(97.4 kg)	332 lbm	(150.6 kg)	286 lbm	(129.9 kg)	444 lbm	(201.3 kg)
27	215 lbm	(97.4 kg)	331 lbm	(150.3 kg)	286 lbm	(129.9 kg)	443 lbm	(201.0 kg)
28	215 lbm	(97.4 kg)	331 lbm	(150.1 kg)	286 lbm	(129.9 kg)	442 lbm	(200.6 kg)
29	215 lbm	(97.4 kg)	330 lbm	(149.9 kg)	286 lbm	(129.9 kg)	442 lbm	(200.3 kg)
30	215 lbm	(97.4 kg)	330 lbm	(149.7 kg)	286 lbm	(129.9 kg)	441 lbm	(200.0 kg)
31	215 lbm	(97.4 kg)	330 lbm	(149.5 kg)	281 lbm	(127.5 kg)	435 lbm	(197.2 kg)
32	215 lbm	(97.4 kg)	329 lbm	(149.3 kg)	281 lbm	(127.5 kg)	434 lbm	(196.9 kg)
33	215 lbm	(97.4 kg)	329 lbm	(149.1 kg)	281 lbm	(127.5 kg)	433 lbm	(196.5 kg)
34	215 lbm	(97.4 kg)	328 lbm	(148.8 kg)	281 lbm	(127.5 kg)	433 lbm	(196.2 kg)
35	215 lbm	(97.4 kg)	328 lbm	(148.6 kg)	281 lbm	(127.5 kg)	432 lbm	(195.9 kg)
36	215 lbm	(97.4 kg)	327 lbm	(148.4 kg)	281 lbm	(127.5 kg)	431 lbm	(195.6 kg)

### AL PLUS™ UHF Television Circularly and Elliptically Polarized Antenna Mechanical Specifications -

RF Channel	Antenna Only O and OC Azimuth Pattern		AL8 PLUS Effective Projected Area (EPA)		AL12 PLUS Effective Projected Area (EPA)			
			1/2-inch Radial Ice		Antenna Only	1/2-inch Radial Ice		
14	11.55 ft <sup>2</sup>	(1.07 m <sup>2</sup> )	14.40 ft <sup>2</sup>	(1.34 m <sup>2</sup> )	15.87 ft <sup>2</sup>	(1.47 m <sup>2</sup> )	19.73 ft <sup>2</sup>	(1.83 m <sup>2</sup> )
15	11.48 ft <sup>2</sup>	(1.07 m <sup>2</sup> )	14.32 ft <sup>2</sup>	(1.33 m <sup>2</sup> )	15.77 ft <sup>2</sup>	(1.47 m <sup>2</sup> )	19.61 ft <sup>2</sup>	(1.82 m <sup>2</sup> )
16	11.42 ft <sup>2</sup>	(1.06 m <sup>2</sup> )	14.24 ft <sup>2</sup>	(1.32 m <sup>2</sup> )	15.67 ft <sup>2</sup>	(1.46 m <sup>2</sup> )	19.49 ft <sup>2</sup>	(1.81 m <sup>2</sup> )
17	11.35 ft <sup>2</sup>	(1.06 m <sup>2</sup> )	14.16 ft <sup>2</sup>	(1.32 m <sup>2</sup> )	15.58 ft <sup>2</sup>	(1.45 m <sup>2</sup> )	19.37 ft <sup>2</sup>	(1.80 m <sup>2</sup> )
18	11.29 ft <sup>2</sup>	(1.05 m <sup>2</sup> )	14.08 ft <sup>2</sup>	(1.31 m <sup>2</sup> )	15.48 ft <sup>2</sup>	(1.44 m <sup>2</sup> )	19.25 ft <sup>2</sup>	(1.79 m <sup>2</sup> )
19	11.23 ft <sup>2</sup>	(1.04 m <sup>2</sup> )	14.00 ft <sup>2</sup>	(1.30 m <sup>2</sup> )	15.39 ft <sup>2</sup>	(1.43 m <sup>2</sup> )	19.13 ft <sup>2</sup>	(1.78 m <sup>2</sup> )
20	11.16 ft <sup>2</sup>	(1.04 m <sup>2</sup> )	13.92 ft <sup>2</sup>	(1.29 m <sup>2</sup> )	15.29 ft <sup>2</sup>	(1.42 m <sup>2</sup> )	19.01 ft <sup>2</sup>	(1.77 m <sup>2</sup> )
21	11.10 ft <sup>2</sup>	(1.03 m <sup>2</sup> )	13.84 ft <sup>2</sup>	(1.29 m <sup>2</sup> )	15.19 ft <sup>2</sup>	(1.41 m <sup>2</sup> )	18.89 ft <sup>2</sup>	(1.76 m <sup>2</sup> )
22	11.03 ft <sup>2</sup>	(1.03 m <sup>2</sup> )	13.76 ft <sup>2</sup>	(1.28 m <sup>2</sup> )	15.10 ft <sup>2</sup>	(1.40 m <sup>2</sup> )	18.77 ft <sup>2</sup>	(1.74 m <sup>2</sup> )
23	10.97 ft <sup>2</sup>	(1.02 m <sup>2</sup> )	13.68 ft <sup>2</sup>	(1.27 m <sup>2</sup> )	15.00 ft <sup>2</sup>	(1.39 m <sup>2</sup> )	18.66 ft <sup>2</sup>	(1.73 m <sup>2</sup> )
24	10.90 ft <sup>2</sup>	(1.01 m <sup>2</sup> )	13.60 ft <sup>2</sup>	(1.26 m <sup>2</sup> )	14.90 ft <sup>2</sup>	(1.39 m <sup>2</sup> )	18.54 ft <sup>2</sup>	(1.72 m <sup>2</sup> )
25	10.84 ft <sup>2</sup>	(1.01 m <sup>2</sup> )	13.52 ft <sup>2</sup>	(1.26 m <sup>2</sup> )	14.81 ft <sup>2</sup>	(1.38 m <sup>2</sup> )	18.42 ft <sup>2</sup>	(1.71 m <sup>2</sup> )
26	10.77 ft <sup>2</sup>	(1.00 m <sup>2</sup> )	13.44 ft <sup>2</sup>	(1.25 m <sup>2</sup> )	14.71 ft <sup>2</sup>	(1.37 m <sup>2</sup> )	18.30 ft <sup>2</sup>	(1.70 m <sup>2</sup> )
27	10.71 ft <sup>2</sup>	(1.00 m <sup>2</sup> )	13.36 ft <sup>2</sup>	(1.24 m <sup>2</sup> )	14.62 ft <sup>2</sup>	(1.36 m <sup>2</sup> )	18.18 ft <sup>2</sup>	(1.69 m <sup>2</sup> )
28	10.64 ft <sup>2</sup>	(0.99 m <sup>2</sup> )	13.28 ft <sup>2</sup>	(1.23 m <sup>2</sup> )	14.52 ft <sup>2</sup>	(1.35 m <sup>2</sup> )	18.06 ft <sup>2</sup>	(1.68 m <sup>2</sup> )
29	10.58 ft <sup>2</sup>	(0.98 m <sup>2</sup> )	13.20 ft <sup>2</sup>	(1.23 m <sup>2</sup> )	14.42 ft <sup>2</sup>	(1.34 m <sup>2</sup> )	17.94 ft <sup>2</sup>	(1.67 m <sup>2</sup> )
30	10.51 ft <sup>2</sup>	(0.98 m <sup>2</sup> )	13.12 ft <sup>2</sup>	(1.22 m <sup>2</sup> )	14.33 ft <sup>2</sup>	(1.33 m <sup>2</sup> )	17.82 ft <sup>2</sup>	(1.66 m <sup>2</sup> )
31	10.45 ft <sup>2</sup>	(0.97 m <sup>2</sup> )	13.04 ft <sup>2</sup>	(1.21 m <sup>2</sup> )	14.23 ft <sup>2</sup>	(1.32 m <sup>2</sup> )	17.70 ft <sup>2</sup>	(1.65 m <sup>2</sup> )
32	10.38 ft <sup>2</sup>	(0.97 m <sup>2</sup> )	12.96 ft <sup>2</sup>	(1.20 m <sup>2</sup> )	14.13 ft <sup>2</sup>	(1.31 m <sup>2</sup> )	17.59 ft <sup>2</sup>	(1.63 m <sup>2</sup> )
33	10.32 ft <sup>2</sup>	(0.96 m <sup>2</sup> )	12.88 ft <sup>2</sup>	(1.20 m <sup>2</sup> )	14.04 ft <sup>2</sup>	(1.30 m <sup>2</sup> )	17.47 ft <sup>2</sup>	(1.62 m <sup>2</sup> )
34	10.25 ft <sup>2</sup>	(0.95 m <sup>2</sup> )	12.80 ft <sup>2</sup>	(1.19 m <sup>2</sup> )	13.94 ft <sup>2</sup>	(1.30 m <sup>2</sup> )	17.35 ft <sup>2</sup>	(1.61 m <sup>2</sup> )
35	10.19 ft <sup>2</sup>	(0.95 m <sup>2</sup> )	12.72 ft <sup>2</sup>	(1.18 m <sup>2</sup> )	13.85 ft <sup>2</sup>	(1.29 m <sup>2</sup> )	17.23 ft <sup>2</sup>	(1.60 m <sup>2</sup> )
36	10.13 ft <sup>2</sup>	(0.94 m <sup>2</sup> )	12.64 ft <sup>2</sup>	(1.18 m <sup>2</sup> )	13.75 ft <sup>2</sup>	(1.28 m <sup>2</sup> )	17.11 ft <sup>2</sup>	(1.59 m <sup>2</sup> )

Electronics Research, Inc. • 7777 Gardner Road • Chandler, IN 47610-9219 • USA | +1 812 925-6000 (tel) • +1 812 925-4030 (fax)

Your Single Source for Broadcast Solutions™ • Call Toll-free at 877 ERI-LINE • Visit Online at [www.eriinc.com](http://www.eriinc.com)

# AL PLUS™ Series UHF Television Antennas

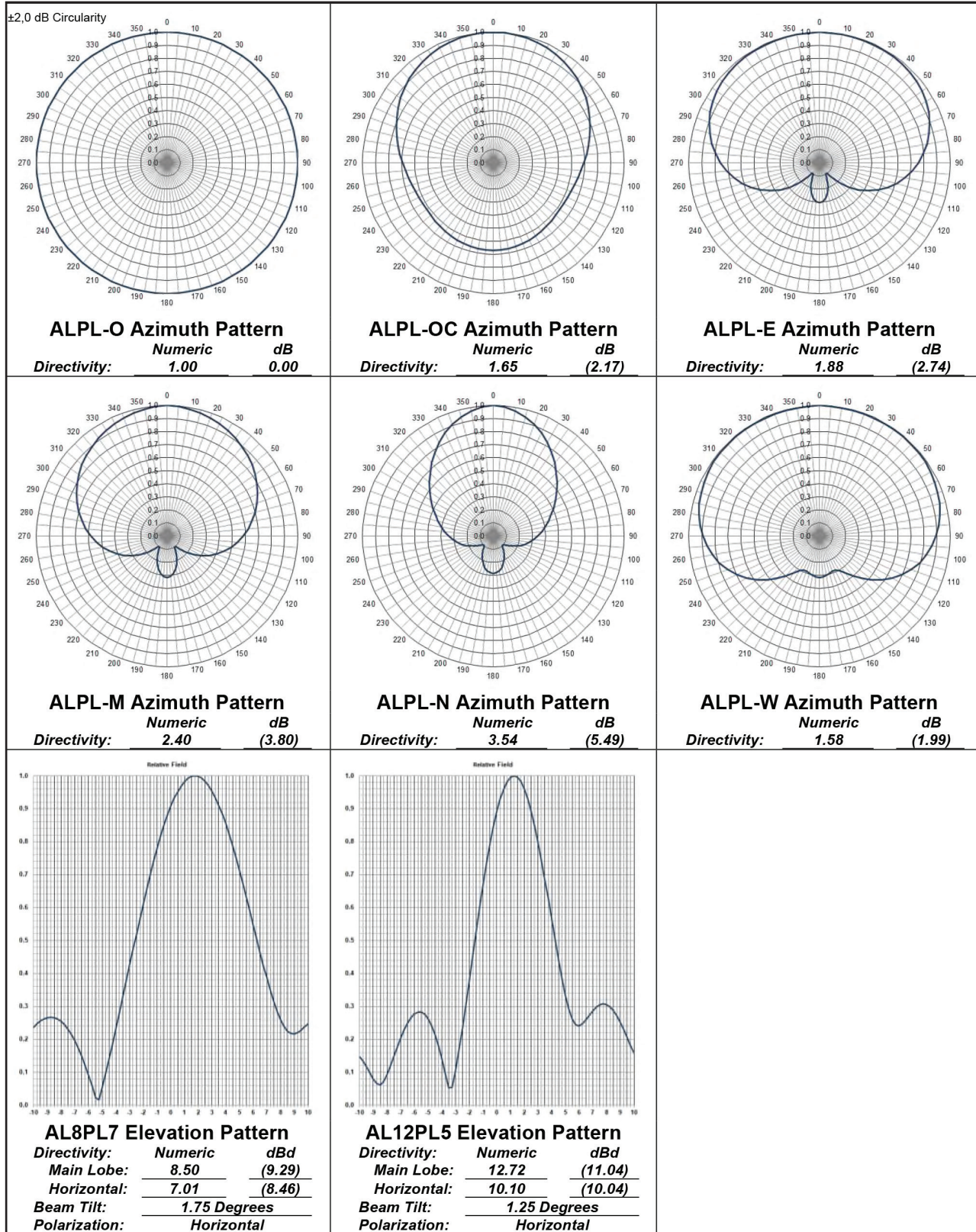
## Low and Medium Power

### AL PLUS™ UHF Television Circularly and Elliptically Polarized Antenna Mechanical Specifications -EPA

RF Channel	AL8 PLUS Effective Projected Area (EPA)				AL12 PLUS Effective Projected Area (EPA)			
	Antenna Only		1/2-inch Radial Ice		Antenna Only		1/2-inch Radial Ice	
	<b>E, M, and N Azimuth Pattern</b>							
14	17.92 ft <sup>2</sup>	(1.67 m <sup>2</sup> )	21.93 ft <sup>2</sup>	(2.04 m <sup>2</sup> )	25.40 ft <sup>2</sup>	(2.36 m <sup>2</sup> )	31.00 ft <sup>2</sup>	(2.88 m <sup>2</sup> )
15	17.87 ft <sup>2</sup>	(1.66 m <sup>2</sup> )	21.87 ft <sup>2</sup>	(2.03 m <sup>2</sup> )	25.33 ft <sup>2</sup>	(2.35 m <sup>2</sup> )	30.92 ft <sup>2</sup>	(2.87 m <sup>2</sup> )
16	17.83 ft <sup>2</sup>	(1.66 m <sup>2</sup> )	21.81 ft <sup>2</sup>	(2.03 m <sup>2</sup> )	25.26 ft <sup>2</sup>	(2.35 m <sup>2</sup> )	30.83 ft <sup>2</sup>	(2.86 m <sup>2</sup> )
17	17.78 ft <sup>2</sup>	(1.65 m <sup>2</sup> )	21.75 ft <sup>2</sup>	(2.02 m <sup>2</sup> )	25.20 ft <sup>2</sup>	(2.34 m <sup>2</sup> )	30.74 ft <sup>2</sup>	(2.86 m <sup>2</sup> )
18	17.73 ft <sup>2</sup>	(1.65 m <sup>2</sup> )	21.69 ft <sup>2</sup>	(2.02 m <sup>2</sup> )	25.13 ft <sup>2</sup>	(2.34 m <sup>2</sup> )	30.65 ft <sup>2</sup>	(2.85 m <sup>2</sup> )
19	17.69 ft <sup>2</sup>	(1.64 m <sup>2</sup> )	21.63 ft <sup>2</sup>	(2.01 m <sup>2</sup> )	25.06 ft <sup>2</sup>	(2.33 m <sup>2</sup> )	30.56 ft <sup>2</sup>	(2.84 m <sup>2</sup> )
20	17.64 ft <sup>2</sup>	(1.64 m <sup>2</sup> )	21.57 ft <sup>2</sup>	(2.01 m <sup>2</sup> )	25.00 ft <sup>2</sup>	(2.32 m <sup>2</sup> )	30.47 ft <sup>2</sup>	(2.83 m <sup>2</sup> )
21	17.60 ft <sup>2</sup>	(1.64 m <sup>2</sup> )	21.51 ft <sup>2</sup>	(2.00 m <sup>2</sup> )	24.93 ft <sup>2</sup>	(2.32 m <sup>2</sup> )	30.38 ft <sup>2</sup>	(2.82 m <sup>2</sup> )
22	17.55 ft <sup>2</sup>	(1.63 m <sup>2</sup> )	21.45 ft <sup>2</sup>	(1.99 m <sup>2</sup> )	24.86 ft <sup>2</sup>	(2.31 m <sup>2</sup> )	30.29 ft <sup>2</sup>	(2.82 m <sup>2</sup> )
23	17.51 ft <sup>2</sup>	(1.63 m <sup>2</sup> )	21.39 ft <sup>2</sup>	(1.99 m <sup>2</sup> )	24.79 ft <sup>2</sup>	(2.30 m <sup>2</sup> )	30.20 ft <sup>2</sup>	(2.81 m <sup>2</sup> )
24	17.46 ft <sup>2</sup>	(1.62 m <sup>2</sup> )	21.33 ft <sup>2</sup>	(1.98 m <sup>2</sup> )	24.73 ft <sup>2</sup>	(2.30 m <sup>2</sup> )	30.11 ft <sup>2</sup>	(2.80 m <sup>2</sup> )
25	17.42 ft <sup>2</sup>	(1.62 m <sup>2</sup> )	21.27 ft <sup>2</sup>	(1.98 m <sup>2</sup> )	24.66 ft <sup>2</sup>	(2.29 m <sup>2</sup> )	30.03 ft <sup>2</sup>	(2.79 m <sup>2</sup> )
26	17.37 ft <sup>2</sup>	(1.61 m <sup>2</sup> )	21.21 ft <sup>2</sup>	(1.97 m <sup>2</sup> )	24.59 ft <sup>2</sup>	(2.29 m <sup>2</sup> )	29.94 ft <sup>2</sup>	(2.78 m <sup>2</sup> )
27	17.33 ft <sup>2</sup>	(1.61 m <sup>2</sup> )	21.15 ft <sup>2</sup>	(1.97 m <sup>2</sup> )	24.52 ft <sup>2</sup>	(2.28 m <sup>2</sup> )	29.85 ft <sup>2</sup>	(2.77 m <sup>2</sup> )
28	17.28 ft <sup>2</sup>	(1.61 m <sup>2</sup> )	21.09 ft <sup>2</sup>	(1.96 m <sup>2</sup> )	24.46 ft <sup>2</sup>	(2.27 m <sup>2</sup> )	29.76 ft <sup>2</sup>	(2.77 m <sup>2</sup> )
29	17.24 ft <sup>2</sup>	(1.60 m <sup>2</sup> )	21.03 ft <sup>2</sup>	(1.95 m <sup>2</sup> )	24.39 ft <sup>2</sup>	(2.27 m <sup>2</sup> )	29.67 ft <sup>2</sup>	(2.76 m <sup>2</sup> )
30	17.19 ft <sup>2</sup>	(1.60 m <sup>2</sup> )	20.97 ft <sup>2</sup>	(1.95 m <sup>2</sup> )	24.32 ft <sup>2</sup>	(2.26 m <sup>2</sup> )	29.58 ft <sup>2</sup>	(2.75 m <sup>2</sup> )
31	17.15 ft <sup>2</sup>	(1.59 m <sup>2</sup> )	20.91 ft <sup>2</sup>	(1.94 m <sup>2</sup> )	24.26 ft <sup>2</sup>	(2.25 m <sup>2</sup> )	29.49 ft <sup>2</sup>	(2.74 m <sup>2</sup> )
32	17.10 ft <sup>2</sup>	(1.59 m <sup>2</sup> )	20.85 ft <sup>2</sup>	(1.94 m <sup>2</sup> )	24.19 ft <sup>2</sup>	(2.25 m <sup>2</sup> )	29.40 ft <sup>2</sup>	(2.73 m <sup>2</sup> )
33	17.05 ft <sup>2</sup>	(1.58 m <sup>2</sup> )	20.79 ft <sup>2</sup>	(1.93 m <sup>2</sup> )	24.12 ft <sup>2</sup>	(2.24 m <sup>2</sup> )	29.31 ft <sup>2</sup>	(2.72 m <sup>2</sup> )
34	17.01 ft <sup>2</sup>	(1.58 m <sup>2</sup> )	20.73 ft <sup>2</sup>	(1.93 m <sup>2</sup> )	24.05 ft <sup>2</sup>	(2.24 m <sup>2</sup> )	29.23 ft <sup>2</sup>	(2.72 m <sup>2</sup> )
35	16.96 ft <sup>2</sup>	(1.58 m <sup>2</sup> )	20.67 ft <sup>2</sup>	(1.92 m <sup>2</sup> )	23.99 ft <sup>2</sup>	(2.23 m <sup>2</sup> )	29.14 ft <sup>2</sup>	(2.71 m <sup>2</sup> )
36	16.92 ft <sup>2</sup>	(1.57 m <sup>2</sup> )	20.61 ft <sup>2</sup>	(1.92 m <sup>2</sup> )	23.92 ft <sup>2</sup>	(2.22 m <sup>2</sup> )	29.05 ft <sup>2</sup>	(2.70 m <sup>2</sup> )
	<b>W Azimuth Pattern</b>							
14	19.58 ft <sup>2</sup>	(1.82 m <sup>2</sup> )	23.65 ft <sup>2</sup>	(2.20 m <sup>2</sup> )	27.90 ft <sup>2</sup>	(2.59 m <sup>2</sup> )	33.57 ft <sup>2</sup>	(3.12 m <sup>2</sup> )
15	19.54 ft <sup>2</sup>	(1.82 m <sup>2</sup> )	23.59 ft <sup>2</sup>	(2.19 m <sup>2</sup> )	27.83 ft <sup>2</sup>	(2.59 m <sup>2</sup> )	33.48 ft <sup>2</sup>	(3.11 m <sup>2</sup> )
16	19.49 ft <sup>2</sup>	(1.81 m <sup>2</sup> )	23.53 ft <sup>2</sup>	(2.19 m <sup>2</sup> )	27.76 ft <sup>2</sup>	(2.58 m <sup>2</sup> )	33.39 ft <sup>2</sup>	(3.10 m <sup>2</sup> )
17	19.44 ft <sup>2</sup>	(1.81 m <sup>2</sup> )	23.47 ft <sup>2</sup>	(2.18 m <sup>2</sup> )	27.69 ft <sup>2</sup>	(2.57 m <sup>2</sup> )	33.31 ft <sup>2</sup>	(3.10 m <sup>2</sup> )
18	19.40 ft <sup>2</sup>	(1.80 m <sup>2</sup> )	23.41 ft <sup>2</sup>	(2.18 m <sup>2</sup> )	27.63 ft <sup>2</sup>	(2.57 m <sup>2</sup> )	33.22 ft <sup>2</sup>	(3.09 m <sup>2</sup> )
19	19.35 ft <sup>2</sup>	(1.80 m <sup>2</sup> )	23.35 ft <sup>2</sup>	(2.17 m <sup>2</sup> )	27.56 ft <sup>2</sup>	(2.56 m <sup>2</sup> )	33.13 ft <sup>2</sup>	(3.08 m <sup>2</sup> )
20	19.31 ft <sup>2</sup>	(1.79 m <sup>2</sup> )	23.29 ft <sup>2</sup>	(2.16 m <sup>2</sup> )	27.49 ft <sup>2</sup>	(2.56 m <sup>2</sup> )	33.04 ft <sup>2</sup>	(3.07 m <sup>2</sup> )
21	19.26 ft <sup>2</sup>	(1.79 m <sup>2</sup> )	23.23 ft <sup>2</sup>	(2.16 m <sup>2</sup> )	27.43 ft <sup>2</sup>	(2.55 m <sup>2</sup> )	32.95 ft <sup>2</sup>	(3.06 m <sup>2</sup> )
22	19.22 ft <sup>2</sup>	(1.79 m <sup>2</sup> )	23.17 ft <sup>2</sup>	(2.15 m <sup>2</sup> )	27.36 ft <sup>2</sup>	(2.54 m <sup>2</sup> )	32.86 ft <sup>2</sup>	(3.05 m <sup>2</sup> )
23	19.17 ft <sup>2</sup>	(1.78 m <sup>2</sup> )	23.11 ft <sup>2</sup>	(2.15 m <sup>2</sup> )	27.29 ft <sup>2</sup>	(2.54 m <sup>2</sup> )	32.77 ft <sup>2</sup>	(3.05 m <sup>2</sup> )
24	19.13 ft <sup>2</sup>	(1.78 m <sup>2</sup> )	23.05 ft <sup>2</sup>	(2.14 m <sup>2</sup> )	27.22 ft <sup>2</sup>	(2.53 m <sup>2</sup> )	32.68 ft <sup>2</sup>	(3.04 m <sup>2</sup> )
25	19.08 ft <sup>2</sup>	(1.77 m <sup>2</sup> )	22.99 ft <sup>2</sup>	(2.14 m <sup>2</sup> )	27.16 ft <sup>2</sup>	(2.52 m <sup>2</sup> )	32.59 ft <sup>2</sup>	(3.03 m <sup>2</sup> )
26	19.04 ft <sup>2</sup>	(1.77 m <sup>2</sup> )	22.93 ft <sup>2</sup>	(2.13 m <sup>2</sup> )	27.09 ft <sup>2</sup>	(2.52 m <sup>2</sup> )	32.51 ft <sup>2</sup>	(3.02 m <sup>2</sup> )
27	18.99 ft <sup>2</sup>	(1.76 m <sup>2</sup> )	22.87 ft <sup>2</sup>	(2.13 m <sup>2</sup> )	27.02 ft <sup>2</sup>	(2.51 m <sup>2</sup> )	32.42 ft <sup>2</sup>	(3.01 m <sup>2</sup> )
28	18.95 ft <sup>2</sup>	(1.76 m <sup>2</sup> )	22.81 ft <sup>2</sup>	(2.12 m <sup>2</sup> )	26.95 ft <sup>2</sup>	(2.51 m <sup>2</sup> )	32.33 ft <sup>2</sup>	(3.00 m <sup>2</sup> )
29	18.90 ft <sup>2</sup>	(1.76 m <sup>2</sup> )	22.75 ft <sup>2</sup>	(2.11 m <sup>2</sup> )	26.89 ft <sup>2</sup>	(2.50 m <sup>2</sup> )	32.24 ft <sup>2</sup>	(3.00 m <sup>2</sup> )
30	18.85 ft <sup>2</sup>	(1.75 m <sup>2</sup> )	22.69 ft <sup>2</sup>	(2.11 m <sup>2</sup> )	26.82 ft <sup>2</sup>	(2.49 m <sup>2</sup> )	32.15 ft <sup>2</sup>	(2.99 m <sup>2</sup> )
31	18.81 ft <sup>2</sup>	(1.75 m <sup>2</sup> )	22.63 ft <sup>2</sup>	(2.10 m <sup>2</sup> )	26.75 ft <sup>2</sup>	(2.49 m <sup>2</sup> )	32.06 ft <sup>2</sup>	(2.98 m <sup>2</sup> )
32	18.76 ft <sup>2</sup>	(1.74 m <sup>2</sup> )	22.57 ft <sup>2</sup>	(2.10 m <sup>2</sup> )	26.69 ft <sup>2</sup>	(2.48 m <sup>2</sup> )	31.97 ft <sup>2</sup>	(2.97 m <sup>2</sup> )
33	18.72 ft <sup>2</sup>	(1.74 m <sup>2</sup> )	22.51 ft <sup>2</sup>	(2.09 m <sup>2</sup> )	26.62 ft <sup>2</sup>	(2.47 m <sup>2</sup> )	31.88 ft <sup>2</sup>	(2.96 m <sup>2</sup> )
34	18.67 ft <sup>2</sup>	(1.74 m <sup>2</sup> )	22.45 ft <sup>2</sup>	(2.09 m <sup>2</sup> )	26.55 ft <sup>2</sup>	(2.47 m <sup>2</sup> )	31.79 ft <sup>2</sup>	(2.95 m <sup>2</sup> )
35	18.63 ft <sup>2</sup>	(1.73 m <sup>2</sup> )	22.39 ft <sup>2</sup>	(2.08 m <sup>2</sup> )	26.48 ft <sup>2</sup>	(2.46 m <sup>2</sup> )	31.70 ft <sup>2</sup>	(2.95 m <sup>2</sup> )
36	18.58 ft <sup>2</sup>	(1.73 m <sup>2</sup> )	22.33 ft <sup>2</sup>	(2.08 m <sup>2</sup> )	26.42 ft <sup>2</sup>	(2.46 m <sup>2</sup> )	31.62 ft <sup>2</sup>	(2.94 m <sup>2</sup> )

## AL PLUS™ Series UHF Television Antennas Low and Medium Power

### AL PLUS™ Series Horizontally Polarized Antenna Patterns



# AL PLUS™ Series UHF Television Antennas

## Low and Medium Power

### AL PLUS™ Horizontally Polarized UHF Television Antenna Specifications

		AL8 PLUS		AL12 PLUS	
<b>General Specifications</b>					
Mount:			Side		
Number of Bays:		8		12	
Slot Cover Height:			1.5 in. (38 mm)		
Slot Cover Color:			Gray		
Ingress Protection Rating (IEC EN 60529):			IP56		
<b>Electrical Specifications</b>					
Polarization:			Horizontal		
Band:			UHF		
Peak Gain:	<b>Azimuth Pattern</b>				
	E	15.98 numeric	(12.04 dBd)	23.91 numeric	(13.79 dBd)
	M	20.40 numeric	(13.10 dBd)	30.53 numeric	(14.85 dBd)
	N	30.09 numeric	(14.78 dBd)	45.03 numeric	(16.53 dBd)
	O	8.50 numeric	(9.29 dBd)	12.72 numeric	(11.04 dBd)
	O	14.03 numeric	(11.47 dBd)	20.99 numeric	(13.22 dBd)
	W	13.43 numeric	(11.28 dBd)	20.10 numeric	(13.03 dBd)
Beam Tilt, Degrees:		1.75-degrees		1.25-degrees	
Antenna VSWR, Maximum:			1.10 over 6 MHz channel		
Feed Configuration:			End		
RF Input:	Low Power		1-5/8-inch 50-ohm EIA Male		
	Medium Power		3-1/8-inch 50-ohm EIA Male		
Power Rating, Average:	Low Power		6.0 kW		
	Medium Power		10.0 kW		
RF Channel:			14 to 36		

Average power rating for DVB-T, DVB-M, and ATSC operation up to 608 MHz (RF Channel36). Contact ERI for other digital television systems and if operation at higher RF channels is required.

All AL PLUS Series UHF television antennas are shipped with 15-inch (381 mm) standoff brackets for mounting on poles or tower legs from 1.5-inches (38 mm) to 7.5-inches (191 mm) OD. Standoff support pipes, face mount brackets, and mounts for larger diameter poles are available from ERI as optional items. Please contact ERI for a proposal for these requirements.

The IEC Test Standard EN 60529 outlines an international classification system for the sealing effectiveness of enclosures of electrical equipment against the intrusion into the equipment of foreign objects (i.e. tools, dust, fingers) and moisture. This classification system uses the letters "IP" ("Ingress Protection") followed by two digits. The first digit of the IP code indicates the degree that persons are protected against contact with moving parts (other than smooth rotating shafts, etc.) and the degree that equipment is protected against solid foreign bodies intruding into an enclosure. The second digit indicates the degree of protection of the equipment inside the enclosure against the harmful entry of various forms of moisture (e.g. dripping, spraying, submersion, etc.)

### AL PLUS™ UHF Television Horizontally Polarized Antenna Mechanical Specifications - Weight

RF Channel	AL8 PLUS Weight		AL12 PLUS Weight	
	Antenna Only	1/2-inch Radial Ice	Antenna Only	1/2-inch Radial Ice
	<b>O and OC Azimuth Pattern</b>			
14	175 lbm (79.2 kg)	266 lbm (120.5 kg)	230 lbm (104.2 kg)	349 lbm (158.4 kg)
15	175 lbm (79.2 kg)	265 lbm (120.3 kg)	230 lbm (104.2 kg)	349 lbm (158.1 kg)
16	175 lbm (79.2 kg)	265 lbm (120.1 kg)	230 lbm (104.2 kg)	348 lbm (157.8 kg)
17	175 lbm (79.2 kg)	264 lbm (119.9 kg)	230 lbm (104.2 kg)	347 lbm (157.5 kg)
18	175 lbm (79.2 kg)	264 lbm (119.7 kg)	230 lbm (104.2 kg)	347 lbm (157.2 kg)
19	175 lbm (79.2 kg)	264 lbm (119.5 kg)	230 lbm (104.2 kg)	346 lbm (156.9 kg)
20	175 lbm (79.2 kg)	263 lbm (119.3 kg)	230 lbm (104.2 kg)	345 lbm (156.6 kg)
21	175 lbm (79.2 kg)	263 lbm (119.1 kg)	230 lbm (104.2 kg)	345 lbm (156.4 kg)
22	175 lbm (79.2 kg)	262 lbm (118.9 kg)	230 lbm (104.2 kg)	344 lbm (156.1 kg)
23	175 lbm (79.2 kg)	262 lbm (118.7 kg)	230 lbm (104.2 kg)	343 lbm (155.8 kg)
24	175 lbm (79.2 kg)	261 lbm (118.5 kg)	230 lbm (104.2 kg)	343 lbm (155.5 kg)
25	175 lbm (79.2 kg)	261 lbm (118.4 kg)	230 lbm (104.2 kg)	342 lbm (155.2 kg)
26	175 lbm (79.2 kg)	260 lbm (118.2 kg)	230 lbm (104.2 kg)	342 lbm (154.9 kg)
27	175 lbm (79.2 kg)	260 lbm (118.0 kg)	230 lbm (104.2 kg)	341 lbm (154.6 kg)

Electronics Research, Inc. • 7777 Gardner Road • Chandler, IN 47610-9219 • USA | +1 812 925-6000 (tel) • +1 812 925-4030 (fax)

Your Single Source for Broadcast Solutions™ • Call Toll-free at 877 ERI-LINE • Visit Online at [www.eriinc.com](http://www.eriinc.com)



## AL PLUS™ Series UHF Television Antennas Low and Medium Power

### AL PLUS™ UHF Television Horizontally Polarized Antenna Mechanical Specifications - Weight

RF Channel	AL8 PLUS Weight		1/2-inch Radial Ice		AL12 PLUS Weight		1/2-inch Radial Ice	
	Antenna Only		Antenna Only		Antenna Only		Antenna Only	
28	175 lbm	(79.2 kg)	260 lbm	(117.8 kg)	230 lbm	(104.2 kg)	340 lbm	(154.3 kg)
29	175 lbm	(79.2 kg)	259 lbm	(117.6 kg)	230 lbm	(104.2 kg)	340 lbm	(154.0 kg)
30	175 lbm	(79.2 kg)	259 lbm	(117.4 kg)	230 lbm	(104.2 kg)	339 lbm	(153.7 kg)
31	175 lbm	(79.2 kg)	258 lbm	(117.2 kg)	225 lbm	(101.9 kg)	333 lbm	(151.2 kg)
32	175 lbm	(79.2 kg)	258 lbm	(117.0 kg)	225 lbm	(101.9 kg)	333 lbm	(150.9 kg)
33	175 lbm	(79.2 kg)	257 lbm	(116.8 kg)	225 lbm	(101.9 kg)	332 lbm	(150.6 kg)
34	175 lbm	(79.2 kg)	257 lbm	(116.6 kg)	225 lbm	(101.9 kg)	331 lbm	(150.3 kg)
35	175 lbm	(79.2 kg)	257 lbm	(116.4 kg)	225 lbm	(101.9 kg)	331 lbm	(150.0 kg)
36	175 lbm	(79.2 kg)	256 lbm	(116.2 kg)	225 lbm	(101.9 kg)	330 lbm	(149.7 kg)
<b>E, M, and N Azimuth Pattern</b>								
14	195 lbm	(88.5 kg)	300 lbm	(136.1 kg)	260 lbm	(118.1 kg)	401 lbm	(181.8 kg)
15	195 lbm	(88.5 kg)	300 lbm	(135.9 kg)	260 lbm	(118.1 kg)	400 lbm	(181.5 kg)
16	195 lbm	(88.5 kg)	299 lbm	(135.7 kg)	260 lbm	(118.1 kg)	400 lbm	(181.3 kg)
17	195 lbm	(88.5 kg)	299 lbm	(135.6 kg)	260 lbm	(118.1 kg)	399 lbm	(181.0 kg)
18	195 lbm	(88.5 kg)	298 lbm	(135.4 kg)	260 lbm	(118.1 kg)	398 lbm	(180.7 kg)
19	195 lbm	(88.5 kg)	298 lbm	(135.2 kg)	260 lbm	(118.1 kg)	398 lbm	(180.4 kg)
20	195 lbm	(88.5 kg)	298 lbm	(135.0 kg)	260 lbm	(118.1 kg)	397 lbm	(180.1 kg)
21	195 lbm	(88.5 kg)	297 lbm	(134.8 kg)	260 lbm	(118.1 kg)	396 lbm	(179.8 kg)
22	195 lbm	(88.5 kg)	297 lbm	(134.6 kg)	260 lbm	(118.1 kg)	396 lbm	(179.5 kg)
23	195 lbm	(88.5 kg)	296 lbm	(134.4 kg)	260 lbm	(118.1 kg)	395 lbm	(179.2 kg)
24	195 lbm	(88.5 kg)	296 lbm	(134.2 kg)	260 lbm	(118.1 kg)	394 lbm	(178.9 kg)
25	195 lbm	(88.5 kg)	295 lbm	(134.0 kg)	260 lbm	(118.1 kg)	394 lbm	(178.6 kg)
26	195 lbm	(88.5 kg)	295 lbm	(133.8 kg)	260 lbm	(118.1 kg)	393 lbm	(178.4 kg)
27	195 lbm	(88.5 kg)	295 lbm	(133.6 kg)	260 lbm	(118.1 kg)	393 lbm	(178.1 kg)
28	195 lbm	(88.5 kg)	294 lbm	(133.4 kg)	260 lbm	(118.1 kg)	392 lbm	(177.8 kg)
29	195 lbm	(88.5 kg)	294 lbm	(133.2 kg)	260 lbm	(118.1 kg)	391 lbm	(177.5 kg)
30	195 lbm	(88.5 kg)	293 lbm	(133.0 kg)	260 lbm	(118.1 kg)	391 lbm	(177.2 kg)
31	195 lbm	(88.5 kg)	293 lbm	(132.8 kg)	255 lbm	(115.9 kg)	385 lbm	(174.6 kg)
32	195 lbm	(88.5 kg)	292 lbm	(132.6 kg)	255 lbm	(115.9 kg)	384 lbm	(174.4 kg)
33	195 lbm	(88.5 kg)	292 lbm	(132.4 kg)	255 lbm	(115.9 kg)	384 lbm	(174.1 kg)
34	195 lbm	(88.5 kg)	292 lbm	(132.2 kg)	255 lbm	(115.9 kg)	383 lbm	(173.8 kg)
35	195 lbm	(88.5 kg)	291 lbm	(132.0 kg)	255 lbm	(115.9 kg)	382 lbm	(173.5 kg)
36	195 lbm	(88.5 kg)	291 lbm	(131.8 kg)	255 lbm	(115.9 kg)	382 lbm	(173.2 kg)
<b>W Azimuth Pattern</b>								
14	195 lbm	(88.5 kg)	307 lbm	(139.2 kg)	260 lbm	(118.1 kg)	411 lbm	(186.4 kg)
15	195 lbm	(88.5 kg)	306 lbm	(139.0 kg)	260 lbm	(118.1 kg)	410 lbm	(186.2 kg)
16	195 lbm	(88.5 kg)	306 lbm	(138.8 kg)	260 lbm	(118.1 kg)	410 lbm	(185.9 kg)
17	195 lbm	(88.5 kg)	306 lbm	(138.6 kg)	260 lbm	(118.1 kg)	409 lbm	(185.6 kg)
18	195 lbm	(88.5 kg)	305 lbm	(138.4 kg)	260 lbm	(118.1 kg)	408 lbm	(185.3 kg)
19	195 lbm	(88.5 kg)	305 lbm	(138.2 kg)	260 lbm	(118.1 kg)	408 lbm	(185.0 kg)
20	195 lbm	(88.5 kg)	304 lbm	(138.0 kg)	260 lbm	(118.1 kg)	407 lbm	(184.7 kg)
21	195 lbm	(88.5 kg)	304 lbm	(137.8 kg)	260 lbm	(118.1 kg)	407 lbm	(184.4 kg)
22	195 lbm	(88.5 kg)	303 lbm	(137.7 kg)	260 lbm	(118.1 kg)	406 lbm	(184.1 kg)
23	195 lbm	(88.5 kg)	303 lbm	(137.5 kg)	260 lbm	(118.1 kg)	405 lbm	(183.8 kg)
24	195 lbm	(88.5 kg)	303 lbm	(137.3 kg)	260 lbm	(118.1 kg)	405 lbm	(183.6 kg)
25	195 lbm	(88.5 kg)	302 lbm	(137.1 kg)	260 lbm	(118.1 kg)	404 lbm	(183.3 kg)
26	195 lbm	(88.5 kg)	302 lbm	(136.9 kg)	260 lbm	(118.1 kg)	403 lbm	(183.0 kg)
27	195 lbm	(88.5 kg)	301 lbm	(136.7 kg)	260 lbm	(118.1 kg)	403 lbm	(182.7 kg)
28	195 lbm	(88.5 kg)	301 lbm	(136.5 kg)	260 lbm	(118.1 kg)	402 lbm	(182.4 kg)
29	195 lbm	(88.5 kg)	300 lbm	(136.3 kg)	260 lbm	(118.1 kg)	401 lbm	(182.1 kg)
30	195 lbm	(88.5 kg)	300 lbm	(136.1 kg)	260 lbm	(118.1 kg)	401 lbm	(181.8 kg)
31	195 lbm	(88.5 kg)	300 lbm	(135.9 kg)	255 lbm	(115.9 kg)	395 lbm	(179.3 kg)
32	195 lbm	(88.5 kg)	300 lbm	(135.9 kg)	255 lbm	(115.9 kg)	395 lbm	(179.3 kg)
33	195 lbm	(88.5 kg)	299 lbm	(135.5 kg)	255 lbm	(115.9 kg)	394 lbm	(178.7 kg)
34	195 lbm	(88.5 kg)	298 lbm	(135.3 kg)	255 lbm	(115.9 kg)	393 lbm	(178.4 kg)
35	195 lbm	(88.5 kg)	298 lbm	(135.1 kg)	255 lbm	(115.9 kg)	393 lbm	(178.1 kg)
36	195 lbm	(88.5 kg)	297 lbm	(134.9 kg)	255 lbm	(115.9 kg)	392 lbm	(177.8 kg)

Electronics Research, Inc. • 7777 Gardner Road • Chandler, IN 47610-9219 • USA | +1 812 925-6000 (tel) • +1 812 925-4030 (fax)

Your Single Source for Broadcast Solutions™ • Call Toll-free at 877 ERI-LINE • Visit Online at [www.eriinc.com](http://www.eriinc.com)

# AL PLUS™ Series UHF Television Antennas

## Low and Medium Power

### AL PLUS™ UHF Television Horizontally Polarized Antenna Mechanical Specifications - EPA

RF Channel	AL8 PLUS Effective Projected Area (EPA)				AL12 PLUS Effective Projected Area (EPA)			
	Antenna Only		1/2-inch Radial Ice		Antenna Only		1/2-inch Radial Ice	
	0 and OC Azimuth Pattern							
14	11.00 ft <sup>2</sup>	(1.02 m <sup>2</sup> )	13.34 ft <sup>2</sup>	(1.24 m <sup>2</sup> )	15.11 ft <sup>2</sup>	(1.40 m <sup>2</sup> )	18.26 ft <sup>2</sup>	(1.70 m <sup>2</sup> )
15	10.94 ft <sup>2</sup>	(1.02 m <sup>2</sup> )	13.26 ft <sup>2</sup>	(1.23 m <sup>2</sup> )	15.02 ft <sup>2</sup>	(1.40 m <sup>2</sup> )	18.15 ft <sup>2</sup>	(1.69 m <sup>2</sup> )
16	10.88 ft <sup>2</sup>	(1.01 m <sup>2</sup> )	13.19 ft <sup>2</sup>	(1.23 m <sup>2</sup> )	14.93 ft <sup>2</sup>	(1.39 m <sup>2</sup> )	18.04 ft <sup>2</sup>	(1.68 m <sup>2</sup> )
17	10.81 ft <sup>2</sup>	(1.01 m <sup>2</sup> )	13.11 ft <sup>2</sup>	(1.22 m <sup>2</sup> )	14.84 ft <sup>2</sup>	(1.38 m <sup>2</sup> )	17.93 ft <sup>2</sup>	(1.67 m <sup>2</sup> )
18	10.75 ft <sup>2</sup>	(1.00 m <sup>2</sup> )	13.04 ft <sup>2</sup>	(1.21 m <sup>2</sup> )	14.75 ft <sup>2</sup>	(1.37 m <sup>2</sup> )	17.82 ft <sup>2</sup>	(1.66 m <sup>2</sup> )
19	10.69 ft <sup>2</sup>	(0.99 m <sup>2</sup> )	12.97 ft <sup>2</sup>	(1.20 m <sup>2</sup> )	14.65 ft <sup>2</sup>	(1.36 m <sup>2</sup> )	17.71 ft <sup>2</sup>	(1.65 m <sup>2</sup> )
20	10.63 ft <sup>2</sup>	(0.99 m <sup>2</sup> )	12.89 ft <sup>2</sup>	(1.20 m <sup>2</sup> )	14.56 ft <sup>2</sup>	(1.35 m <sup>2</sup> )	17.60 ft <sup>2</sup>	(1.64 m <sup>2</sup> )
21	10.57 ft <sup>2</sup>	(0.98 m <sup>2</sup> )	12.82 ft <sup>2</sup>	(1.19 m <sup>2</sup> )	14.47 ft <sup>2</sup>	(1.34 m <sup>2</sup> )	17.49 ft <sup>2</sup>	(1.63 m <sup>2</sup> )
22	10.51 ft <sup>2</sup>	(0.98 m <sup>2</sup> )	12.74 ft <sup>2</sup>	(1.18 m <sup>2</sup> )	14.38 ft <sup>2</sup>	(1.34 m <sup>2</sup> )	17.38 ft <sup>2</sup>	(1.62 m <sup>2</sup> )
23	10.44 ft <sup>2</sup>	(0.97 m <sup>2</sup> )	12.67 ft <sup>2</sup>	(1.18 m <sup>2</sup> )	14.29 ft <sup>2</sup>	(1.33 m <sup>2</sup> )	17.27 ft <sup>2</sup>	(1.61 m <sup>2</sup> )
24	10.38 ft <sup>2</sup>	(0.96 m <sup>2</sup> )	12.60 ft <sup>2</sup>	(1.17 m <sup>2</sup> )	14.19 ft <sup>2</sup>	(1.32 m <sup>2</sup> )	17.16 ft <sup>2</sup>	(1.60 m <sup>2</sup> )
25	10.32 ft <sup>2</sup>	(0.96 m <sup>2</sup> )	12.52 ft <sup>2</sup>	(1.16 m <sup>2</sup> )	14.10 ft <sup>2</sup>	(1.31 m <sup>2</sup> )	17.05 ft <sup>2</sup>	(1.58 m <sup>2</sup> )
26	10.26 ft <sup>2</sup>	(0.95 m <sup>2</sup> )	12.45 ft <sup>2</sup>	(1.16 m <sup>2</sup> )	14.01 ft <sup>2</sup>	(1.30 m <sup>2</sup> )	16.94 ft <sup>2</sup>	(1.57 m <sup>2</sup> )
27	10.20 ft <sup>2</sup>	(0.95 m <sup>2</sup> )	12.37 ft <sup>2</sup>	(1.15 m <sup>2</sup> )	13.92 ft <sup>2</sup>	(1.29 m <sup>2</sup> )	16.83 ft <sup>2</sup>	(1.56 m <sup>2</sup> )
28	10.14 ft <sup>2</sup>	(0.94 m <sup>2</sup> )	12.30 ft <sup>2</sup>	(1.14 m <sup>2</sup> )	13.83 ft <sup>2</sup>	(1.29 m <sup>2</sup> )	16.72 ft <sup>2</sup>	(1.55 m <sup>2</sup> )
29	10.07 ft <sup>2</sup>	(0.94 m <sup>2</sup> )	12.23 ft <sup>2</sup>	(1.14 m <sup>2</sup> )	13.74 ft <sup>2</sup>	(1.28 m <sup>2</sup> )	16.61 ft <sup>2</sup>	(1.54 m <sup>2</sup> )
30	10.01 ft <sup>2</sup>	(0.93 m <sup>2</sup> )	12.15 ft <sup>2</sup>	(1.13 m <sup>2</sup> )	13.64 ft <sup>2</sup>	(1.27 m <sup>2</sup> )	16.50 ft <sup>2</sup>	(1.53 m <sup>2</sup> )
31	9.95 ft <sup>2</sup>	(0.92 m <sup>2</sup> )	12.08 ft <sup>2</sup>	(1.12 m <sup>2</sup> )	13.55 ft <sup>2</sup>	(1.26 m <sup>2</sup> )	16.39 ft <sup>2</sup>	(1.52 m <sup>2</sup> )
32	9.89 ft <sup>2</sup>	(0.92 m <sup>2</sup> )	12.00 ft <sup>2</sup>	(1.12 m <sup>2</sup> )	13.46 ft <sup>2</sup>	(1.25 m <sup>2</sup> )	16.28 ft <sup>2</sup>	(1.51 m <sup>2</sup> )
33	9.83 ft <sup>2</sup>	(0.91 m <sup>2</sup> )	11.93 ft <sup>2</sup>	(1.11 m <sup>2</sup> )	13.37 ft <sup>2</sup>	(1.24 m <sup>2</sup> )	16.17 ft <sup>2</sup>	(1.50 m <sup>2</sup> )
34	9.77 ft <sup>2</sup>	(0.91 m <sup>2</sup> )	11.86 ft <sup>2</sup>	(1.10 m <sup>2</sup> )	13.28 ft <sup>2</sup>	(1.23 m <sup>2</sup> )	16.06 ft <sup>2</sup>	(1.49 m <sup>2</sup> )
35	9.70 ft <sup>2</sup>	(0.90 m <sup>2</sup> )	11.78 ft <sup>2</sup>	(1.09 m <sup>2</sup> )	13.19 ft <sup>2</sup>	(1.23 m <sup>2</sup> )	15.95 ft <sup>2</sup>	(1.48 m <sup>2</sup> )
36	9.64 ft <sup>2</sup>	(0.90 m <sup>2</sup> )	11.71 ft <sup>2</sup>	(1.09 m <sup>2</sup> )	13.09 ft <sup>2</sup>	(1.22 m <sup>2</sup> )	15.84 ft <sup>2</sup>	(1.47 m <sup>2</sup> )
	<b>E, M, and N Azimuth Pattern</b>							
14	17.06 ft <sup>2</sup>	(1.59 m <sup>2</sup> )	20.31 ft <sup>2</sup>	(1.89 m <sup>2</sup> )	24.19 ft <sup>2</sup>	(2.25 m <sup>2</sup> )	28.71 ft <sup>2</sup>	(2.67 m <sup>2</sup> )
15	17.02 ft <sup>2</sup>	(1.58 m <sup>2</sup> )	20.25 ft <sup>2</sup>	(1.88 m <sup>2</sup> )	24.13 ft <sup>2</sup>	(2.24 m <sup>2</sup> )	28.63 ft <sup>2</sup>	(2.66 m <sup>2</sup> )
16	16.98 ft <sup>2</sup>	(1.58 m <sup>2</sup> )	20.20 ft <sup>2</sup>	(1.88 m <sup>2</sup> )	24.06 ft <sup>2</sup>	(2.24 m <sup>2</sup> )	28.54 ft <sup>2</sup>	(2.65 m <sup>2</sup> )
17	16.93 ft <sup>2</sup>	(1.57 m <sup>2</sup> )	20.14 ft <sup>2</sup>	(1.87 m <sup>2</sup> )	24.00 ft <sup>2</sup>	(2.23 m <sup>2</sup> )	28.46 ft <sup>2</sup>	(2.65 m <sup>2</sup> )
18	16.89 ft <sup>2</sup>	(1.57 m <sup>2</sup> )	20.09 ft <sup>2</sup>	(1.87 m <sup>2</sup> )	23.93 ft <sup>2</sup>	(2.22 m <sup>2</sup> )	28.38 ft <sup>2</sup>	(2.64 m <sup>2</sup> )
19	16.85 ft <sup>2</sup>	(1.57 m <sup>2</sup> )	20.03 ft <sup>2</sup>	(1.86 m <sup>2</sup> )	23.87 ft <sup>2</sup>	(2.22 m <sup>2</sup> )	28.30 ft <sup>2</sup>	(2.63 m <sup>2</sup> )
20	16.80 ft <sup>2</sup>	(1.56 m <sup>2</sup> )	19.98 ft <sup>2</sup>	(1.86 m <sup>2</sup> )	23.81 ft <sup>2</sup>	(2.21 m <sup>2</sup> )	28.21 ft <sup>2</sup>	(2.62 m <sup>2</sup> )
21	16.76 ft <sup>2</sup>	(1.56 m <sup>2</sup> )	19.92 ft <sup>2</sup>	(1.85 m <sup>2</sup> )	23.74 ft <sup>2</sup>	(2.21 m <sup>2</sup> )	28.13 ft <sup>2</sup>	(2.61 m <sup>2</sup> )
22	16.72 ft <sup>2</sup>	(1.55 m <sup>2</sup> )	19.86 ft <sup>2</sup>	(1.85 m <sup>2</sup> )	23.68 ft <sup>2</sup>	(2.20 m <sup>2</sup> )	28.05 ft <sup>2</sup>	(2.61 m <sup>2</sup> )
23	16.67 ft <sup>2</sup>	(1.55 m <sup>2</sup> )	19.81 ft <sup>2</sup>	(1.84 m <sup>2</sup> )	23.61 ft <sup>2</sup>	(2.19 m <sup>2</sup> )	27.97 ft <sup>2</sup>	(2.60 m <sup>2</sup> )
24	16.63 ft <sup>2</sup>	(1.55 m <sup>2</sup> )	19.75 ft <sup>2</sup>	(1.84 m <sup>2</sup> )	23.55 ft <sup>2</sup>	(2.19 m <sup>2</sup> )	27.88 ft <sup>2</sup>	(2.59 m <sup>2</sup> )
25	16.59 ft <sup>2</sup>	(1.54 m <sup>2</sup> )	19.70 ft <sup>2</sup>	(1.83 m <sup>2</sup> )	23.49 ft <sup>2</sup>	(2.18 m <sup>2</sup> )	27.80 ft <sup>2</sup>	(2.58 m <sup>2</sup> )
26	16.54 ft <sup>2</sup>	(1.54 m <sup>2</sup> )	19.64 ft <sup>2</sup>	(1.83 m <sup>2</sup> )	23.42 ft <sup>2</sup>	(2.18 m <sup>2</sup> )	27.72 ft <sup>2</sup>	(2.58 m <sup>2</sup> )
27	16.50 ft <sup>2</sup>	(1.53 m <sup>2</sup> )	19.59 ft <sup>2</sup>	(1.82 m <sup>2</sup> )	23.36 ft <sup>2</sup>	(2.17 m <sup>2</sup> )	27.64 ft <sup>2</sup>	(2.57 m <sup>2</sup> )
28	16.46 ft <sup>2</sup>	(1.53 m <sup>2</sup> )	19.53 ft <sup>2</sup>	(1.82 m <sup>2</sup> )	23.29 ft <sup>2</sup>	(2.16 m <sup>2</sup> )	27.55 ft <sup>2</sup>	(2.56 m <sup>2</sup> )
29	16.42 ft <sup>2</sup>	(1.53 m <sup>2</sup> )	19.48 ft <sup>2</sup>	(1.81 m <sup>2</sup> )	23.23 ft <sup>2</sup>	(2.16 m <sup>2</sup> )	27.47 ft <sup>2</sup>	(2.55 m <sup>2</sup> )
30	16.37 ft <sup>2</sup>	(1.52 m <sup>2</sup> )	19.42 ft <sup>2</sup>	(1.80 m <sup>2</sup> )	23.16 ft <sup>2</sup>	(2.15 m <sup>2</sup> )	27.39 ft <sup>2</sup>	(2.55 m <sup>2</sup> )
31	16.33 ft <sup>2</sup>	(1.52 m <sup>2</sup> )	19.37 ft <sup>2</sup>	(1.80 m <sup>2</sup> )	23.10 ft <sup>2</sup>	(2.15 m <sup>2</sup> )	27.31 ft <sup>2</sup>	(2.54 m <sup>2</sup> )
32	16.29 ft <sup>2</sup>	(1.51 m <sup>2</sup> )	19.31 ft <sup>2</sup>	(1.79 m <sup>2</sup> )	23.04 ft <sup>2</sup>	(2.14 m <sup>2</sup> )	27.23 ft <sup>2</sup>	(2.53 m <sup>2</sup> )
33	16.24 ft <sup>2</sup>	(1.51 m <sup>2</sup> )	19.25 ft <sup>2</sup>	(1.79 m <sup>2</sup> )	22.97 ft <sup>2</sup>	(2.13 m <sup>2</sup> )	27.14 ft <sup>2</sup>	(2.52 m <sup>2</sup> )
34	16.20 ft <sup>2</sup>	(1.51 m <sup>2</sup> )	19.20 ft <sup>2</sup>	(1.78 m <sup>2</sup> )	22.91 ft <sup>2</sup>	(2.13 m <sup>2</sup> )	27.06 ft <sup>2</sup>	(2.51 m <sup>2</sup> )
35	16.16 ft <sup>2</sup>	(1.50 m <sup>2</sup> )	19.14 ft <sup>2</sup>	(1.78 m <sup>2</sup> )	22.84 ft <sup>2</sup>	(2.12 m <sup>2</sup> )	26.98 ft <sup>2</sup>	(2.51 m <sup>2</sup> )
36	16.11 ft <sup>2</sup>	(1.50 m <sup>2</sup> )	19.09 ft <sup>2</sup>	(1.77 m <sup>2</sup> )	22.78 ft <sup>2</sup>	(2.12 m <sup>2</sup> )	26.90 ft <sup>2</sup>	(2.50 m <sup>2</sup> )
	<b>W Azimuth Pattern</b>							
14	18.65 ft <sup>2</sup>	(1.73 m <sup>2</sup> )	21.90 ft <sup>2</sup>	(2.03 m <sup>2</sup> )	26.57 ft <sup>2</sup>	(2.47 m <sup>2</sup> )	31.09 ft <sup>2</sup>	(2.89 m <sup>2</sup> )
15	18.60 ft <sup>2</sup>	(1.73 m <sup>2</sup> )	21.84 ft <sup>2</sup>	(2.03 m <sup>2</sup> )	26.50 ft <sup>2</sup>	(2.46 m <sup>2</sup> )	31.00 ft <sup>2</sup>	(2.88 m <sup>2</sup> )
16	18.56 ft <sup>2</sup>	(1.73 m <sup>2</sup> )	21.78 ft <sup>2</sup>	(2.02 m <sup>2</sup> )	26.44 ft <sup>2</sup>	(2.46 m <sup>2</sup> )	30.92 ft <sup>2</sup>	(2.87 m <sup>2</sup> )
17	18.52 ft <sup>2</sup>	(1.72 m <sup>2</sup> )	21.73 ft <sup>2</sup>	(2.02 m <sup>2</sup> )	26.38 ft <sup>2</sup>	(2.45 m <sup>2</sup> )	30.84 ft <sup>2</sup>	(2.87 m <sup>2</sup> )
18	18.48 ft <sup>2</sup>	(1.72 m <sup>2</sup> )	21.67 ft <sup>2</sup>	(2.01 m <sup>2</sup> )	26.31 ft <sup>2</sup>	(2.45 m <sup>2</sup> )	30.76 ft <sup>2</sup>	(2.86 m <sup>2</sup> )
19	18.43 ft <sup>2</sup>	(1.71 m <sup>2</sup> )	21.62 ft <sup>2</sup>	(2.01 m <sup>2</sup> )	26.25 ft <sup>2</sup>	(2.44 m <sup>2</sup> )	30.67 ft <sup>2</sup>	(2.85 m <sup>2</sup> )
20	18.39 ft <sup>2</sup>	(1.71 m <sup>2</sup> )	21.56 ft <sup>2</sup>	(2.00 m <sup>2</sup> )	26.18 ft <sup>2</sup>	(2.43 m <sup>2</sup> )	30.59 ft <sup>2</sup>	(2.84 m <sup>2</sup> )
21	18.35 ft <sup>2</sup>	(1.70 m <sup>2</sup> )	21.51 ft <sup>2</sup>	(2.00 m <sup>2</sup> )	26.12 ft <sup>2</sup>	(2.43 m <sup>2</sup> )	30.51 ft <sup>2</sup>	(2.84 m <sup>2</sup> )
22	18.30 ft <sup>2</sup>	(1.70 m <sup>2</sup> )	21.45 ft <sup>2</sup>	(1.99 m <sup>2</sup> )	26.06 ft <sup>2</sup>	(2.42 m <sup>2</sup> )	30.43 ft <sup>2</sup>	(2.83 m <sup>2</sup> )
23	18.26 ft <sup>2</sup>	(1.70 m <sup>2</sup> )	21.40 ft <sup>2</sup>	(1.99 m <sup>2</sup> )	25.99 ft <sup>2</sup>	(2.42 m <sup>2</sup> )	30.34 ft <sup>2</sup>	(2.82 m <sup>2</sup> )
24	18.22 ft <sup>2</sup>	(1.69 m <sup>2</sup> )	21.34 ft <sup>2</sup>	(1.98 m <sup>2</sup> )	25.93 ft <sup>2</sup>	(2.41 m <sup>2</sup> )	30.26 ft <sup>2</sup>	(2.81 m <sup>2</sup> )

## AL PLUS™ Series UHF Television Antennas Low and Medium Power

### AL PLUS™ UHF Television Horizontally Polarized Antenna Mechanical Specifications - EPA

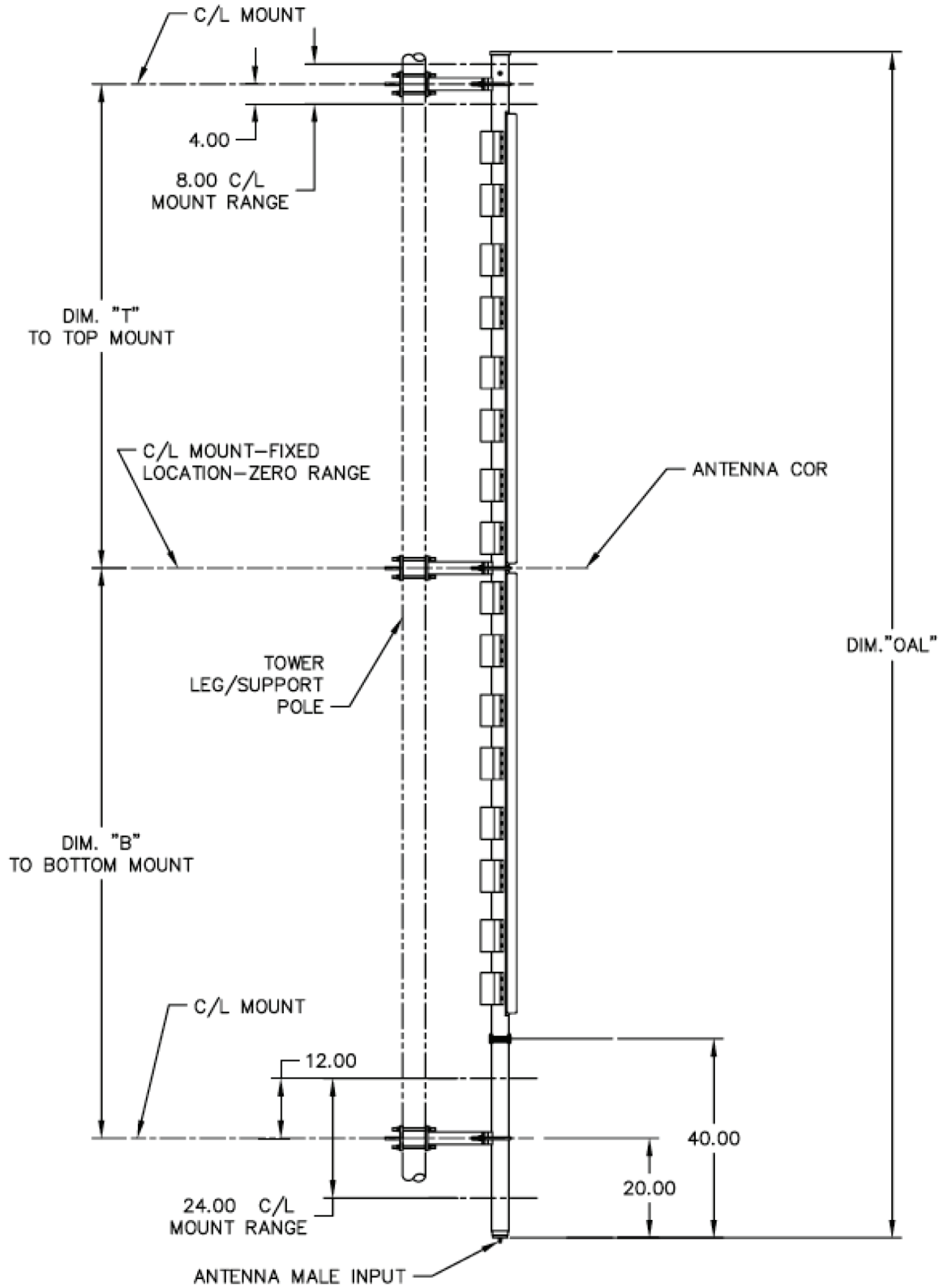
RF Channel	AL8 PLUS Effective Projected Area (EPA)				AL12 PLUS Effective Projected Area (EPA)			
	Antenna Only		1/2-inch Radial Ice		Antenna Only		1/2-inch Radial Ice	
25	18.17 ft <sup>2</sup>	(1.69 m <sup>2</sup> )	21.28 ft <sup>2</sup>	(1.98 m <sup>2</sup> )	25.86 ft <sup>2</sup>	(2.40 m <sup>2</sup> )	30.18 ft <sup>2</sup>	(2.80 m <sup>2</sup> )
26	18.13 ft <sup>2</sup>	(1.68 m <sup>2</sup> )	21.23 ft <sup>2</sup>	(1.97 m <sup>2</sup> )	25.80 ft <sup>2</sup>	(2.40 m <sup>2</sup> )	30.10 ft <sup>2</sup>	(2.80 m <sup>2</sup> )
27	18.09 ft <sup>2</sup>	(1.68 m <sup>2</sup> )	21.17 ft <sup>2</sup>	(1.97 m <sup>2</sup> )	25.73 ft <sup>2</sup>	(2.39 m <sup>2</sup> )	30.02 ft <sup>2</sup>	(2.79 m <sup>2</sup> )
28	18.04 ft <sup>2</sup>	(1.68 m <sup>2</sup> )	21.12 ft <sup>2</sup>	(1.96 m <sup>2</sup> )	25.67 ft <sup>2</sup>	(2.39 m <sup>2</sup> )	29.93 ft <sup>2</sup>	(2.78 m <sup>2</sup> )
29	18.00 ft <sup>2</sup>	(1.67 m <sup>2</sup> )	21.06 ft <sup>2</sup>	(1.96 m <sup>2</sup> )	25.61 ft <sup>2</sup>	(2.38 m <sup>2</sup> )	29.85 ft <sup>2</sup>	(2.77 m <sup>2</sup> )
30	17.96 ft <sup>2</sup>	(1.67 m <sup>2</sup> )	21.01 ft <sup>2</sup>	(1.95 m <sup>2</sup> )	25.54 ft <sup>2</sup>	(2.37 m <sup>2</sup> )	29.77 ft <sup>2</sup>	(2.77 m <sup>2</sup> )
31	17.91 ft <sup>2</sup>	(1.66 m <sup>2</sup> )	20.95 ft <sup>2</sup>	(1.95 m <sup>2</sup> )	25.48 ft <sup>2</sup>	(2.37 m <sup>2</sup> )	29.69 ft <sup>2</sup>	(2.76 m <sup>2</sup> )
32	17.87 ft <sup>2</sup>	(1.66 m <sup>2</sup> )	20.90 ft <sup>2</sup>	(1.94 m <sup>2</sup> )	25.41 ft <sup>2</sup>	(2.36 m <sup>2</sup> )	29.60 ft <sup>2</sup>	(2.75 m <sup>2</sup> )
33	17.83 ft <sup>2</sup>	(1.66 m <sup>2</sup> )	20.84 ft <sup>2</sup>	(1.94 m <sup>2</sup> )	25.35 ft <sup>2</sup>	(2.36 m <sup>2</sup> )	29.52 ft <sup>2</sup>	(2.74 m <sup>2</sup> )
34	17.78 ft <sup>2</sup>	(1.65 m <sup>2</sup> )	20.78 ft <sup>2</sup>	(1.93 m <sup>2</sup> )	25.29 ft <sup>2</sup>	(2.35 m <sup>2</sup> )	29.44 ft <sup>2</sup>	(2.74 m <sup>2</sup> )
35	17.74 ft <sup>2</sup>	(1.65 m <sup>2</sup> )	20.73 ft <sup>2</sup>	(1.93 m <sup>2</sup> )	25.22 ft <sup>2</sup>	(2.34 m <sup>2</sup> )	29.36 ft <sup>2</sup>	(2.73 m <sup>2</sup> )
36	17.70 ft <sup>2</sup>	(1.64 m <sup>2</sup> )	20.67 ft <sup>2</sup>	(1.92 m <sup>2</sup> )	25.16 ft <sup>2</sup>	(2.34 m <sup>2</sup> )	29.27 ft <sup>2</sup>	(2.72 m <sup>2</sup> )

### AL PLUS™ UHF Television Antenna Length

RF Channel	AL8 PLUS		AL12 PLUS		RF Channel	AL8 PLUS		AL12 PLUS	
	Length	Length	Length	Length		Length	Length	Length	Length
14	20.80-feet	(6.34-meters)	30.80-feet	(9.39-meters)	26	19.30-feet	(5.88-meters)	28.55-feet	(8.70-meters)
15	20.68-feet	(6.30-meters)	30.61-feet	(9.33-meters)	27	19.18-feet	(5.84-meters)	28.36-feet	(8.64-meters)
16	20.55-feet	(6.26-meters)	30.43-feet	(9.27-meters)	28	19.05-feet	(5.81-meters)	28.18-feet	(8.59-meters)
17	20.43-feet	(6.23-meters)	30.24-feet	(9.22-meters)	29	18.93-feet	(5.77-meters)	27.99-feet	(8.53-meters)
18	20.30-feet	(6.19-meters)	30.05-feet	(9.16-meters)	30	18.80-feet	(5.73-meters)	27.80-feet	(8.47-meters)
19	20.18-feet	(6.15-meters)	29.86-feet	(9.10-meters)	31	18.68-feet	(5.69-meters)	27.61-feet	(8.42-meters)
20	20.05-feet	(6.11-meters)	29.68-feet	(9.04-meters)	32	18.55-feet	(5.65-meters)	27.43-feet	(8.36-meters)
21	19.93-feet	(6.07-meters)	29.49-feet	(8.99-meters)	33	18.43-feet	(5.62-meters)	27.24-feet	(8.30-meters)
22	19.80-feet	(6.04-meters)	29.30-feet	(8.93-meters)	34	18.30-feet	(5.58-meters)	27.05-feet	(8.24-meters)
23	19.68-feet	(6.00-meters)	29.11-feet	(8.87-meters)	35	18.18-feet	(5.54-meters)	26.86-feet	(8.19-meters)
24	19.55-feet	(5.96-meters)	28.93-feet	(8.82-meters)	36	18.05-feet	(5.50-meters)	26.68-feet	(8.13-meters)
25	19.43-feet	(5.92-meters)	28.74-feet	(8.76-meters)					

# AL PLUS™ Series UHF Television Antennas

Low and Medium Power



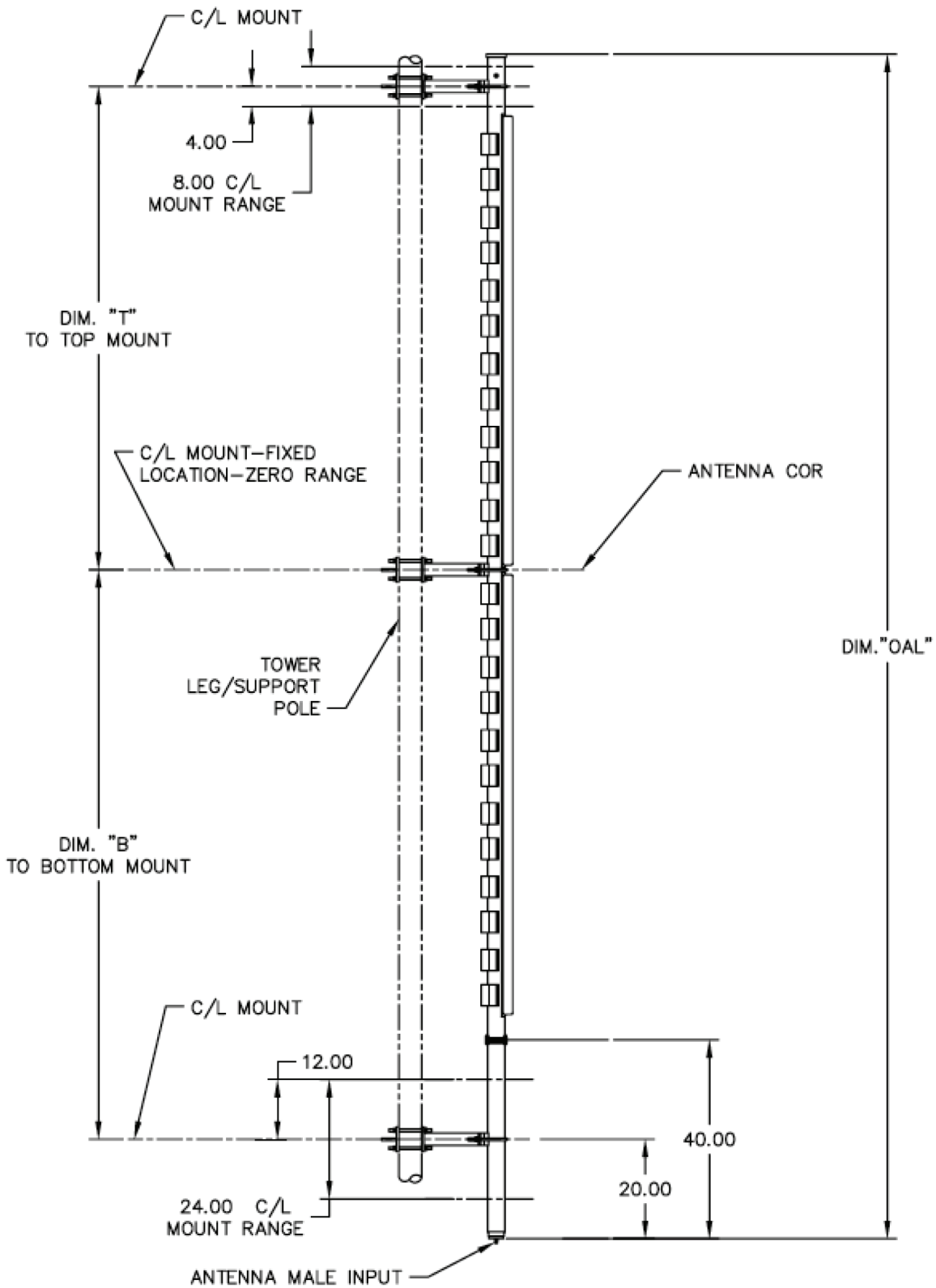
**AL8 Plus Typical Mounting Diagram**

Electronics Research, Inc. • 7777 Gardner Road • Chandler, IN 47610-9219 • USA | +1 812 925-6000 (tel) • +1 812 925-4030 (fax)

Your Single Source for Broadcast Solutions™ • Call Toll-free at 877 ERI-LINE • Visit Online at [www.eriinc.com](http://www.eriinc.com)

# AL PLUS™ Series UHF Television Antennas

Low and Medium Power



**AL12 Plus Typical Mounting Diagram**

Electronics Research, Inc. • 7777 Gardner Road • Chandler, IN 47610-9219 • USA | +1 812 925-6000 (tel) • +1 812 925-4030 (fax)

Your Single Source for Broadcast Solutions™ • Call Toll-free at 877 ERI-LINE • Visit Online at [www.eriinc.com](http://www.eriinc.com)