

# CoperSurgical

## Ally UPS Adapter Drape for Advincula Delineator™ Instructions for Use

---

**REF** AU-AD-DLNTR



## Table of Contents

Caution	1
Indications for Use	1
Contraindications	1
Precautions and Warnings	1
Device Description	2
Instructions for Use	2
Before Attaching the Adapter Drape	2
Attaching Adapter and Draping the Ally UPS Arm	2
Attaching the Advincula Delineator to the Adapter Drape	4
Removing the Manipulator from the Adapter	5
Removing the Adapter Drape from the Ally UPS	5
Disposal of Adapter Drape	6
Explanation of Symbols	6

## **CAUTION**

U.S. Federal law restricts this device to sale by or on the order of a physician.

## **INDICATIONS FOR USE**

This Advincula Delineator™ Adapter Drape for the Ally Uterine Positioning System™ (UPS) is intended to assist the surgical staff in mounting, positioning and holding the uterine manipulator during gynecological laparoscopic surgical procedures. It is intended for use by trained operating room personnel in an operating room environment.

## **CONTRAINDICATIONS**

CooperSurgical Manipulator Devices should not be used in patients who are pregnant or who are suspected of being pregnant, planned gamete intrafallopian transfer procedures, in patients who have an IUD in place, in patients with suspected pelvic infections and in cases where the surgeon deems it inadvisable or finds it difficult to insert the silicone tip into the cervix or uterus.

## **WARNINGS**

- Failure to properly follow instructions for the Adapter Drape (Adapter), including instructions supplied with the Ally Uterine Positioning System (Ally UPS) and the Advincula Delineator manipulator handle may lead to injury and result in improper functioning of the system. The Advincula Delineator configurations include the following part numbers: The Advincula Delineator with Ultem® Koh-Efficients® (AD750-KE30, AD750-KE35, AD750-KE40 and the Advincula Delineator with Stainless Steel Koh-Efficients (AD750-KES30, AD750-KES35 and AD750-KES40)
- The Advincula Adapter Drape is only intended for use with the Advincula Delineator and the Ally UPS. Use of this device with any other Manipulator is not recommended, and could lead to injury and improper functioning of the device.
- This device was designed, tested and manufactured for single patient use only. Reuse or reprocessing of this device may lead to its failure and subsequent patient injury. Reprocessing and/or resterilization of this device may create the risk of contamination and patient infection. Do not reuse, reprocess or resterilize this device.
- ALWAYS position the patient, the OR table, and the Ally UPS prior to attaching the Ally UPS' Flexible Arm/Adapter to the Manipulator Handle.
- ALWAYS have the patient under general endotracheal anesthesia when the Ally UPS is attached to the Manipulator Handle.

## DEVICE DESCRIPTION

The Ally UPS Adapter Drape for the Advincula Delineator™ (Part Number AU-AD-DLNTR) is a sterile, single-use disposable device that is used to attach the Advincula Delineator to the Ally Uterine Positioning System™ (UPS) exclusively.



**Photo 1** Advincula Delineator™ Connected to the Ally UPS Adapter Drape

## INSTRUCTIONS FOR USE

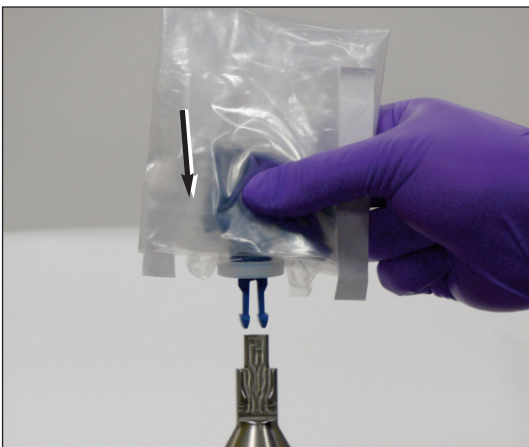
### Before Attaching the Adapter Drape

1. Be familiar with the Ally UPS Instructions for moving and locking the Arm in position.
2. Prior to attaching the Adapter Drape to the Ally UPS Flexible Arm, make sure the patient is positioned and prepped.
3. Position the Flexible Arm so that the distal end is vertical.

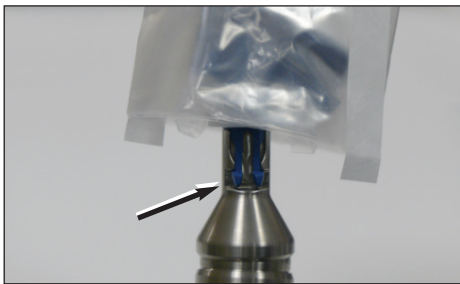
### Attaching Adapter and Draping Ally UPS Arm

1. Remove the Adapter Drape from the package. DO NOT pull apart the drape.
2. Locate the two Pinch Clips inside. Align and press them into the corresponding metal interface at the distal end of the flexible arm and confirm that it locks in place.

Photos 2a-b show the connection of the adapter onto the top of the Ally UPS' Flexible Arm. (Pictures for reference only)



**Photo 2a** Installing the Adapter Drape with the Pinch Clips



**Photo 2b** Pinch Clips in the Seated Position

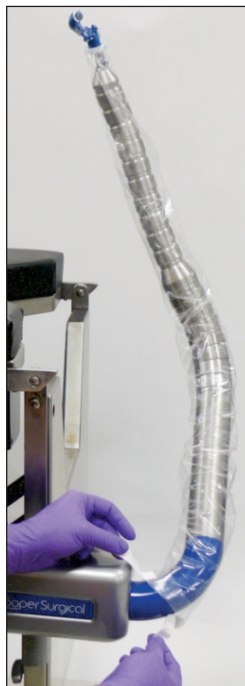
3. Once the Adapter is locked in place (after the instructions in Step #2), use the white Pull Tabs to slide the sterile Drape all the way down the Ally UPS' Flexible Arm until it reaches the Main Unit. The Ally UPS is now fully draped (See Photos 3a-c).



**Photo 3a** Pulling on the Tabs



**Photo 3b**  
Drape partially pulled down



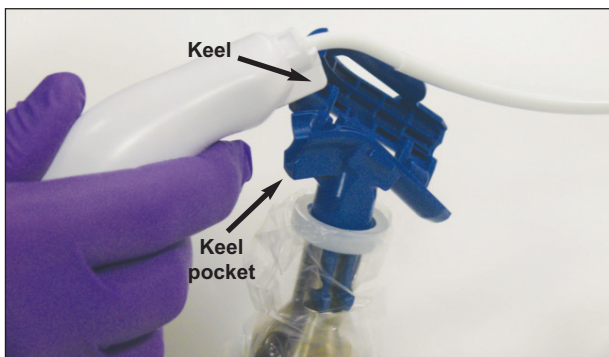
**Photo 3**  
Bottom of the Drape  
fully extended on the Ally  
UPS Arm

4. Ensure that the Adapter is securely in place on the arm.

## Attaching the Advincula Delineator to the Adapter Drape

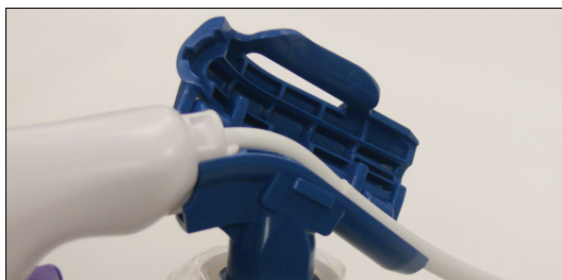
Ensure that:

1. The manipulator is inserted into the patient.
2. The draped Ally UPS Arm and Adapter are placed in approximate position for attachment near the proximal end of the Manipulator Handle.
3. Identify the mating features for handle (Keel) and adapter (Keel Pocket). Align the Keel over the Keel Pocket. (See Photo 4).



**Photo 4** Keel Feature on the handle lined up with the Keel pocket on the Adapter Cradle

4. With one hand hold the Manipulator Handle, hold the Adapter with the other hand, and bring the two together. Take care to minimize the movement of the Manipulator within the patient.



**Photo 5**

5. Close and lock the Latch. Ensure that the Manipulator is securely attached to the Adapter Drape. (See Photo 6)
6. Remove pressure on the Foot Pedal to lock the Flexible Arm in this position.



**Photo 6**



**Photo 7** Closed Position

### **Removing the Manipulator from the Adapter**

To remove the Advincula Delineator from the Adapter Drape, place your fingers under the latch and pry the mechanism outward while pulling up on the cover.



**Photo 8** Apply outward pressure while lifting.

### **Removing the Adapter Drape from the Ally UPS**

To detach the Adapter from the Ally UPS Flexible Arm after the procedure is complete, squeeze the two Pinch Clips together with one hand (Refer to Photo 15) while lifting the Adapter upward with the other hand without twisting. Then pull the Adapter Drape up off of the Flexible Arm. Refer to the Ally UPS Instructions for Use for cleaning instructions.



**Photo 9** Removing the Adapter Drape from the Ally UPS Arm

# DISPOSAL OF ADAPTER DRAPE

Dispose of in accordance with all applicable Federal, State and local Medical / Hazardous waste practices once the procedure is completed.

## EXPLANATION OF SYMBOLS



Reorder number



Lot number



Use-by date



Sterilized using ethylene oxide



Do not re-use



Do not re-sterilize



Consult instructions for use



Caution



Do not use if package is damaged

**R<sub>x</sub> Only**

**Caution:** U.S. Federal law restricts this device to sale by or on the order of a physician.



Not made with natural rubber latex

Advincula Arch™, and Uterine Positioning System™ are trademarks of CooperSurgical, Inc.

Koh-Efficient® is a registered trademark of CooperSurgical, Inc.

Ultem® is a registered trademark of SABIC Global Technologies B.V.

CooperSurgical is a registered trademark of CooperSurgical, Inc.

© 2015 CooperSurgical, Inc.



## NOTES

---

# NOTES

---

# NOTES

---

**CooperSurgical**

Made in the USA

---

95 Corporate Drive  
Trumbull, CT 06611 USA  
Phone: (800) 243-2974  
Fax: (800) 262-0105  
[www.coopersurgical.com](http://www.coopersurgical.com)

International  
Phone: (203) 601-9818  
Fax: (203) 601-4747

38308 • Rev. A • 9/15