

ALV ALL Stainless Steel In-Line Solenoid Valve

ALV610P1C4 is 5/2 solenoid pilot operated valve. Armed with the stainless steel(304 or 316) body and enclosure of coil, this one is excellent for use in corrosive and hazardous atmospheres. Working pressure from 2 bar to 8 bar and the working voltage from 12-48VDC, 110-240VAC.



SPECIFICATIONS AND TECHNICAL DATA

SPOOL BODY

- **Spool valve Body:** Stainless Steel (316 or 316L)
- **Seal:** Buna N
- **Materials in contact with fluid:** Stainless Steel (316 or 316L) Glass-filled PA, POM, Buna N
- **Function:** 5/2, CV =1.1 (19.63mm²), Monostable
- **Air Ports:** Air ports 1/4" BSPP or NPT
- **Assembly and Connection:** in-line, Manual override on body
- **Fasteners:** Stainless steel (304 or 316)
- **Environment:** Type 4, 4X (indoor and outdoor)
- **Area Classification:** II2 G EEx d IIC T6
- **Medium Temperature:** -25°C~80°C
- **Working Pressure:** 2~8 bar
- **Working Medium:** less than 40µm filtered and dried air
- **Bistable(ALV620P2C4):** available on requiring
- **Working life:** more than 1000,000 cycle (On the normal working condition)

SOLENOID COIL

- **Model No:** C4 (Flameproof Coil)
- **Operating Voltage:** 12/24/48VDC-3.5W, 24VDC-1.5W 110/210/220/240VAC-4VA(50/60HZ)
- **Coil Enclosure:** stainless steel (316)
- **Wiring Connector:** M20-1.5, 1/2" NPT on request, Terminal Strip
- **Insulation Protection:** F Class Coil
- **Insulated voltage:** 1000V
- **Duty factor:** 100% ED
- **Weather Proof:** IP66
- **Area Classification:** Ex d IIC T6
- **Operating Temp:** -20°C~60°C



QA Notification No: SIRA 12 ATEX M526
Notified Body No: 0518 for Annexes IV and VII



EC-Type Examination Certificate Number: DNV 12 ATEX 13733X
Notified Body No: 0575

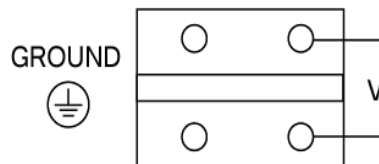
APPROVED BY:   IP66

HIGH QUALITY | EXCELLENT PRICE | WHERE QUALITY COUNTS

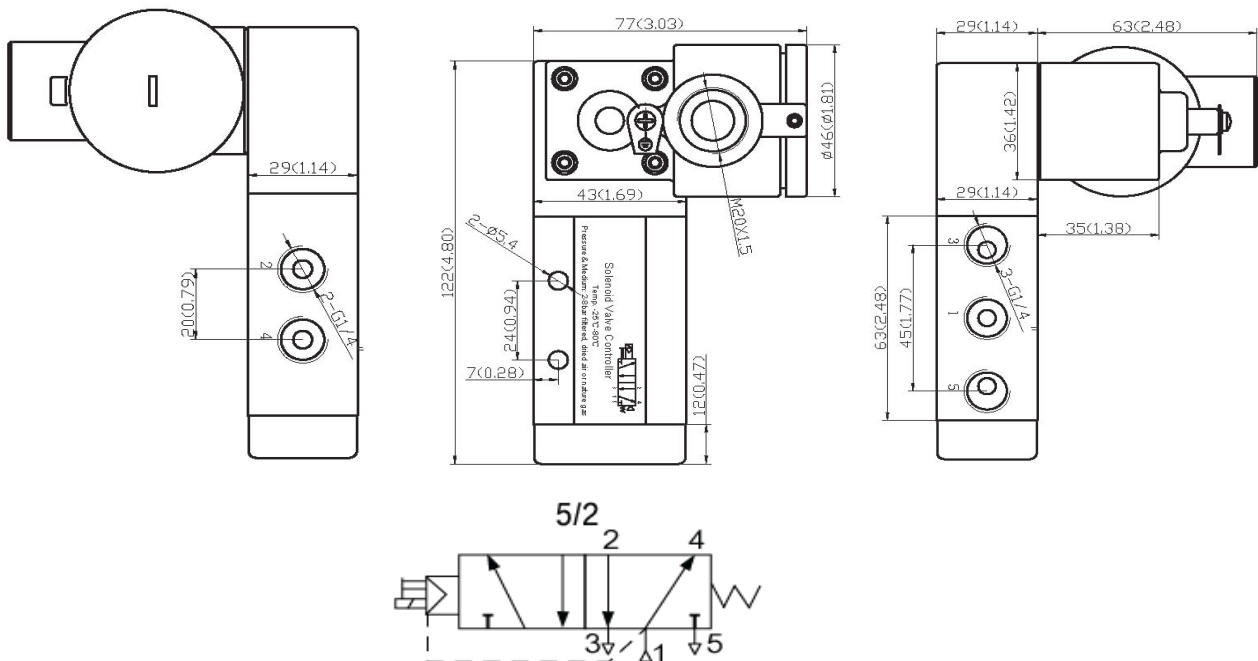
ADVANCED FEATURES

- 1, All the exhaust ports of this spool valve are connectable, providing better environmental protection.
- 2, The valves armed with "environmentally-protected structure" offer environmental protection against the ingress of liquids, dusts or other foreign matter.

WIRING DIAGRAM



DRAWING & DIMENSION



***For continuous improvement of the product, we reserve the right to alter the dimensions, technical data and information included in this data sheet.

HIGH QUALITY | EXCELLENT PRICE | WHERE QUALITY COUNTS

Alpha Controls Ltd Alpha House, 1 Ormside Close, Hindley Industrial Estate, Hindley Green, Wigan. WN2 4HR. | Tel: +44 (0)1942 525833 | E-mail: technicalsales@alphacontrols.co.uk
www.alphacontrols.co.uk | www.alphacontrolssystem.com

