

1964 26' D INTERNATIONAL



*Bambi II...  
shortest distance between  
you and adventure!*

When you own a Bambi II nothing stands between you and high adventure. Just roll your luxuriously appointed beach cabana right alongside the sandy shore. Playful waves will show off for you all day and lull you into sound sleep at night. Here you can lose all the cares and pressures of everyday life. Toss them into the deep... set them adrift like castaways and leave them to the wind and the sea. They'll not come back. Let your paintbrush capture inspiring seascapes... bring them back on film... or just fill your eyes with beauty and lock it in your heart forever! The Bambi II is the first travel trailer propor-



tioned to the small car concept of American motoring. It's both light and lithe and follows your compact car as if it was its shadow. But don't let its pint size fool you, it is every inch an Airstream. This remarkable 17-foot miniature Land Yacht provides sleeping accommodations for *four*, complete bathroom with roomy shower, gas water heater, forced air heat, lights and refrigeration . . . all totally independent of outside sources! The popular Bambi II is a limited production model, so order early. Your friendly Airstream dealer will be glad to let you test-tow it yourself. Come in soon . . . how about today?

**FREE! BIG, NEW CATALOG IN LIVING COLOR.  
THRILLING AS A WORLD CRUISE. WRITE TODAY!**

**AIRSTREAM** INC.

*write nearest factory:*

160 CHURCH STREET, JACKSON CENTER, OHIO  
12804 E. FIRESTONE BLVD., SANTA FE SPRINGS 3, CALIF.



your once-a-year opportunity to save!

AIRSTREAM MID-YEAR  
**SALES FAIR**

Limited time only... July 1st-31st, 1964

Hurry, hurry, hurry... your lucky days are here! Airstream's Mid-Summer Sales Fair is your chance to buy an Airstream travel trailer at an unbeatable price. A chance that comes but once a year! In cooperation with the factory, your Airstream dealer is authorized to offer you sensational values on the Airstream of your choice. Bambi II, Globe Trotter, Sovereign of the Road... any one of the 13 exciting '64 models you've had your eye on is yours for *less* during this fabulous Sales Fair. We're making it easier than ever for you to stop dreaming and start *doing*... to make all those wonderful travel dreams come true! Go out and discover America... explore nearby friendly Mexico... share in the fun, friendship and adventure of a Wally Byam Caravan. Whatever your travel plans, *now* is the time to buy... while you can save so much! You won't have another chance like this for another year so see your Airstream dealer right away. Sales Fair ends July 31st, 1964, hurry!



FREE! BIG, NEW CATALOG  
IN LIVING COLOR.  
THRILLING AS A WORLD CRUISE.  
WRITE TODAY!

write nearest factory

AIRSTREAM, INC., 130 CHURCH STREET, JACKSON CENTER, OHIO • 12804 EAST FIRESTONE BOULEVARD, SANTA FE SPRINGS 9, CALIFORNIA  
CIRCLE 1 IN LITERATURE LIBRARY



your once-a-year opportunity to save!

AIRSTREAM MID-YEAR  
**SALES FAIR**

Limited time only... July 1st - 31st, 1964

Hurry, hurry, hurry... your lucky days are here! Airstream's Mid-Summer Sales Fair is your chance to buy an Airstream travel trailer at an unbeatable price. A chance that comes but once a year! In cooperation with the factory, your Airstream dealer is authorized to offer you sensational values on the Airstream of your choice. Bambi II, Globe Trotter, Sovereign of the Road... any one of the 13 exciting '64 models you've had your eye on is yours for less during this fabulous Sales Fair. We're making it easier than ever for you to stop dreaming and start *doing*... to make all those wonderful travel dreams come true! Go out and discover America... explore nearby friendly Mexico... share in the fun, friendship and adventure of a Wally Byam Caravan. Whatever your travel plans, *now* is the time to buy... while you can save so much! You won't have another chance like this for another year so see your Airstream dealer right away. Sales Fair ends July 31st, 1964, hurry!



FREE! BIG, NEW CATALOG  
IN LIVING COLOR.  
THRILLING AS A WORLD CRUISE,  
WRITE TODAY!

write nearest factory

AIRSTREAM, INC., 130 CHURCH STREET, JACKSON CENTER, OHIO • 12804 EAST FIRESTONE BOULEVARD, SANTA FE SPRINGS 9, CALIFORNIA  
CIRCLE 1 IN LITERATURE LIBRARY









**A TRAVEL DREAM AND AN AIRSTREAM  
ARE ALL YOU NEED TO GO AROUND THE COUNTRY  
OR AROUND THE WORLD!**

*no other means of travel . . . no other travel trailer  
let's you see so much, do so much, live so much!*

There are many ways to travel; some are faster, some are more expensive but none are more *luxurious* nor more *rewarding* than Airstreaming. More luxurious, because an Airstream is your first class stateroom anywhere your heart desires. It becomes your elegant villa in France, your private chalet in Switzerland, your lodge among the giant Redwoods of California. More rewarding, because only with an Airstream can you really absorb the very *essence* of the places you visit. While others are herded through the usual tourist high spots, you can barter for silks with a camel driver on the road to ancient Kabul...talk at length with the tattooed snake charmer in a Madras village...casually make the friendship of a craggy-faced fisherman on our own New England coast. People to people and day by day...*that's* the way to get the most out of traveling! And no other means of travel...no other travel trailer lets you see so much, do so much, live so much! Choose from 13 exciting models from the 17-foot Bambi II to the 30-foot Sovereign of the Road. Each is built to go anywhere your car can go; each is engineered to provide more self-contained luxuries than any other travel trailer...even more than previous Airstreams! Whether you decide to stay a day in the middle of town or a month in the middle of nowhere, you can enjoy your own comfortable bed, complete bathroom with toilet, tub and shower, hot and cold water under constant pressure, heat, Uni-Volt lighting and refrigeration completely independent of outside connections. See and try the magnificent 1964 Airstream at your nearest dealer. Come in soon... there are so many wonderful things for you to see, so many things to do...and a whole life to live!

*Free! Big, new catalog in living color.  
Thrilling as a world cruise. Write today!*

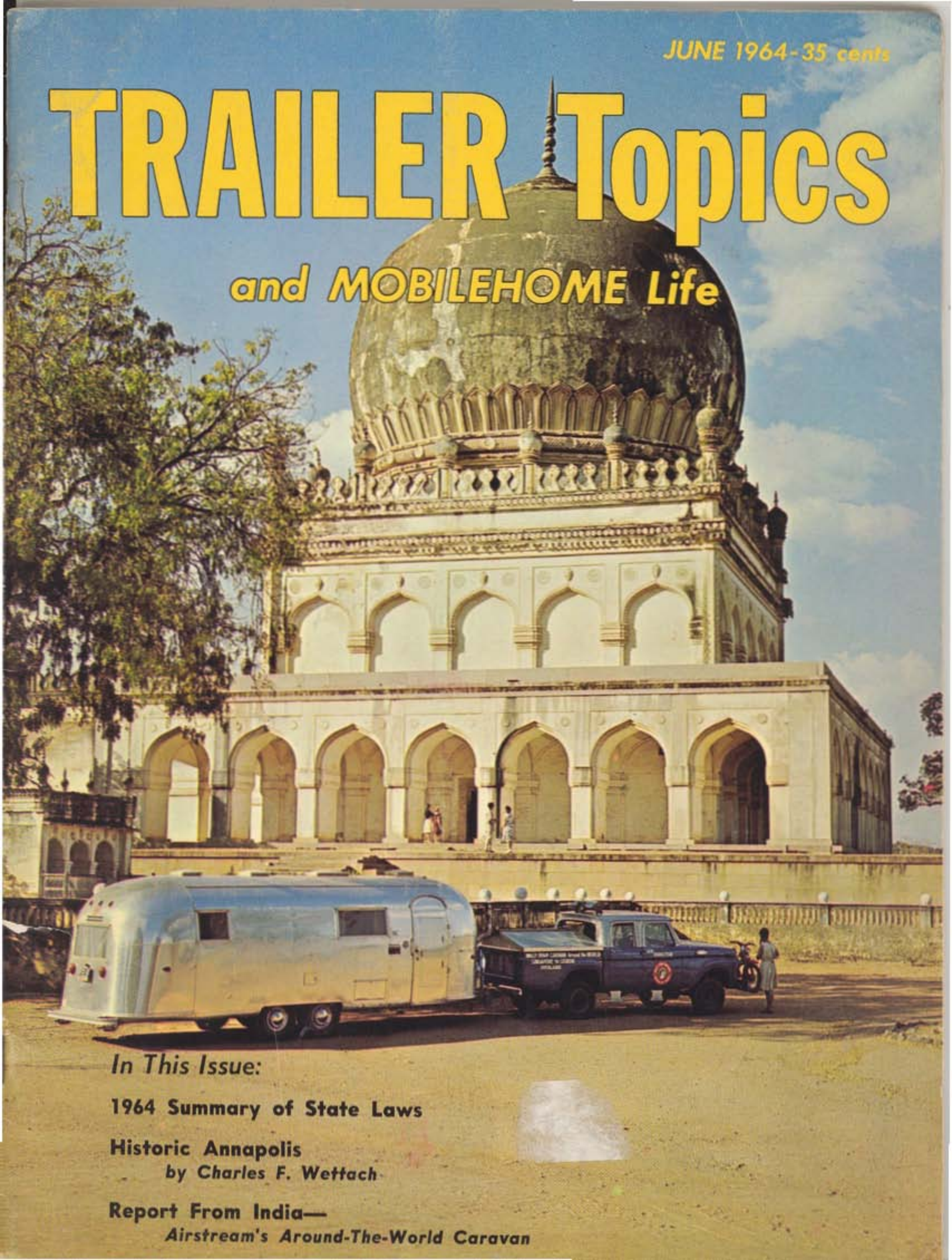
**AIRSTREAM** INC.

Write nearest factory: 140 Church St., Jackson Center, Ohio • 12804 E. Firestone Blvd., Santa Fe Springs 1, Calif.

JUNE 1964-35 cents

# TRAILER Topics

*and MOBILEHOME Life*



*In This Issue:*

**1964 Summary of State Laws**

**Historic Annapolis**

*by Charles F. Wettach*

**Report From India—**

*Airstream's Around-The-World Caravan*

## AIRSTREAM'S BAMBI GROWS



**A**IRSTREAM's popular little Bambi travel trailer has grown a foot in length this year to become a 17-footer with the designation "Bambi II."

Like its predecessor, the 17-foot Airstream continues to be regarded as a limited production model. It replaces the 16-footer in this year's model line and is presently on Airstream dealer lots throughout the country.

Except for its size the new Bambi II is a full-fledged member of Airstream's quality travel trailer line. It shares with the larger (19, 22, 24, 26 and 30 feet) Airstreams all the accustomed qualities of light, easy towing and luxurious comfort features. Like them it is fully self-contained in its standard form.

Externally, the Bambi II is 17 feet in overall length and seven feet wide. Its smooth rounded ends are formed by five close-riveted segments of pre-stressed aluminum—Airstream's famous super light "monocoque" construction. Underneath, the all aluminum under surface completes the Bambi II's streamlining and protects against water, mud and road grime.

Airstream's exclusive Dura-Torque axle, independent wheel suspension, oversized shock absorbers, Aero-Stress steel chassis and electric braking system are all

standard equipment on the diminutive travel trailer.

The new Bambi sleeps four adults in complete comfort, as compared with three for the original model. Additional galley and storage space and a new window on the curb side of the trailer also are other direct benefits of the added foot in length.

Like its popular predecessor, the Bambi II is one of the very few small trailers providing full bathroom facilities, including a shower bath. The new model has its own separate lavatory, shaving mirror and cosmetic setup and flush toilet. As with all Airstreams produced in recent years, sewage can be retained in the Bambi II's holding tank.

Write the manufacturer, Airstream, Inc., Jackson Center, Ohio 45334 for colorful literature and complete information. **X**

# TAKE A FREE AIRSTREAM DEMONSTRATION RIDE!

*If you've never pulled a trailer...if you've never towed a high spirited, lightweight Airstream...here's a wonderful opportunity for you to find out for yourself, just exactly what it's really like. And we'll provide the Airstream!*

We've been telling everyone that the 1964 Airstream is the finest, most advanced travel trailer in the history of trailer-making...that of all travel trailers, it is the lightest, strongest, easiest towing; that the new 1964 Airstream includes many advanced features no other travel trailer can give you for years to come...and now we'd like to prove it! We're inviting you to come in to your nearest Airstream dealer and discover a wonderful travel experience for yourself.

We know a lot of people have some qualms about pulling anything behind their car. This is understandable, we've seen plenty of people struggling with a heavy, boxy, cumbersome and unwilling trailer. But here's something you should know...towing an Airstream doesn't compare to pulling an ordinary trailer any more than driving your car compares to driving a huge diesel truck! That's because only an Airstream is designed to respond instantly to even the slightest forward motion. Airstream promises a revelation ride and that's exactly what we want to prove!

We want you to take an Airstream out on the road. Now you're in for the surprise of your life; soon after you pull out, you'll realize you're at full cruising speed with only the slightest trailing sensation! That's because you're towing the world's lightest travel trailer. We want you to take an Airstream across the roughest roads

you can find...notice how it remains level as it glides easily over the deepest bumps. Then take to the curves...now watch your Airstream follow your every move without slipping or sliding. That *extra* lateral stability comes from Airstream's exclusive Dura-Torque axle...you're actually riding on rubber torsion bars with many times the strength of steel. They require no attention and you'll never have to replace them for as long as you own your Airstream! Now try a steep hill...the Airstream leaps right up eagerly. Down the hill...the Airstream is so light, you descend slowly, brake normally. And now you've discovered what thousands of Airstream owners already know...on America's superhighways...backwood roads...or across the tortuous jungle trails in darkest Africa...you just can't out-manuever an Airstream!

While you're about it, step inside and try the heavenly rubber foam mattresses...turn on a faucet and notice the constant water pressure...try the lights and inspect the refrigerator. By the time you pull back onto your dealer's lot, you'll be as enthusiastic as we are. We think you'll agree that the 1964 Airstream is *the* easiest-towing travel trailer in the world!

Your Airstream dealer is expecting you. He has both, trailer and car ready for you. Come in soon as there is so much in life to do...so much to see...so much to live!

*Free! Big, new catalog in living color.  
Thrilling as a world cruise. Write today!*

**AIRSTREAM** INC.

Write nearest factory: 130 Church St., Jackson Center, Ohio • 12804 E. Firestone Blvd., Santa Fe Springs 9, Calif.

CIRCLE 1 IN LITERATURE LIBRARY





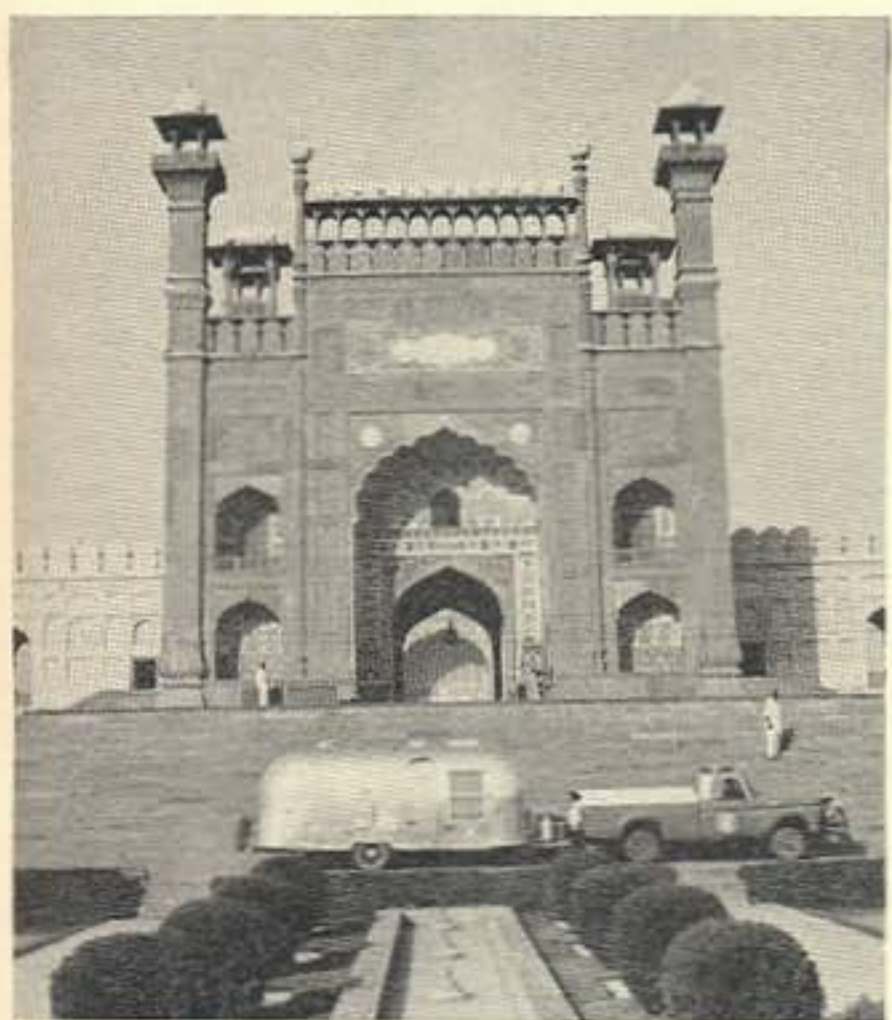
# AIRSTREAM FIRST AROUND THE WORLD!

Never before has any travel trailer been tested around the world — never before has any travel trailer incorporated so many travel tested features as the new 1965 Airstream!

*"We promise to refine and perfect our product by continuous travel testing over the highways and byways of the world!"*

*—Wally Byam Creed*

The travel testing never stops at Airstream. This is why Airstream is invariably first with every significant improvement. Airstream was first through Central America... first across the African continent... and now first to circle the earth. 102 Caravanners — men, women and children of all ages — lived a legendary adventure story that without an Airstream would have remained only an idle dream. Together they followed the fabled route of early explorers around the Orient... through what was once mighty Babylonia... and across Europe. Some of the Caravanners brought back exqui-



site marble from Afghanistan, priceless silks and ivory from the bazaars of the world. Others had the thrill of riding through a village perched high atop an elephant like a maharajah. Still others were entertained by royalty and made lasting friendships. One thing they all brought back... a heart filled with golden moments that will live forever. Isn't this the kind of travel adventure you want? When you go Airstream, you don't pass up what you came to see; you become a living part of it. You may share your lunch with a shepherd boy in Pakistan or you may just as likely be the honored guest at the rajah's palace. An Airstream is travel tested to go anywhere your car can go and provide you with first class accommodations wherever you choose to stop. Every year the tests get tougher; every year the Airstream gets better. As a result, the 1965 Airstream is the ulti-

mate in travel trailer technology... the ultimate in travel luxury. See your friendly Airstream dealer for a free demonstration and a revelation ride. A travel dream and a 1965 Airstream are all you need to go around the country or around the world!

*Free! Big, new catalog in living color.  
Thrilling as a trip around the world. Write today!*

**AIRSTREAM** INC.

Write nearest factory:  
130 Church St., Jackson Center, Ohio  
12804 E. Firestone Blvd., Santa Fe Springs 9, California

CIRCLE 1 IN LITERATURE LIBRARY





## **AIRSTREAM 1965**

more features, more improvements,  
more travel pleasure!

The new 1965 Airstream is here... ready to make all your travel dreams come true with more luxury, more convenience than ever before! The new Uni-Volt system for 1965 means 12-volt or 110-volt power anytime, anywhere — automatically. No switches to flick... just turn on whatever you want... hooked up or not the Uni-Volt makes it work. And the Uni-Volt will automatically recharge your battery to a safe level. Drawers convert to shelves; shelves convert to open storage for big, bulky



items. A new credenza table accommodates four persons or more, yet disappears into the wall when not in use. Everything has been convenience-engineered! The highly contemporary interiors are decorator styled; hand-rubbed black walnut or African mahogany woods are exquisitely harmonized with luxury fabrics in exciting new colors and textures. This year, we've even improved on the famous Aerostress chassis. Inspired by day-to-day experiences on the Wally Byam Around the World Caravan,

the new **Super-Aerostress** chassis is still lighter, still stronger; Airstream now tows even easier than ever! Take off for misty mountains or sunny beaches... share in the fun, friendship and adventure of a Wally Byam Caravan. Whatever your travel dreams, only a 1965 Airstream will make them all come true. You just couldn't pick a better year to buy an Airstream. See your nearby Airstream dealer for a free demonstration ride... then go out and discover real travel adventure!

SEND FOR FREE FULL COLOR CATALOG

**AIRSTREAM** INC.

Write nearest factory:

160 Church Street, Jackson Center, Ohio  
12804 E. Firestone Blvd., Santa Fe Springs 3, Calif.

## AIRSTREAM 1965

# ONLY ONE TRAVEL TRAILER WILL HAVE ALL THESE IMPORTANT CONVENIENCE FEATURES

*Whether you're buying your very first travel trailer or whether you want to trade up to the most exciting travel trailer ever built...you'll discover the 1965 Airstream gives you everything you ever wanted. See it, try it, prove it to yourself!*

Many of the "luxury features" first introduced by Airstream are considered necessities years later. The fully equipped bathroom, the septic tank and pressurized water system are a few good examples of Airstream's years-ahead engineering. Today, you wouldn't be caught without them. In 1965 Airstream again introduces many important new luxury features... features you haven't even seen yet. In a few years these too will be considered necessities... but you can enjoy them all *right now* in a 1965 Airstream! Let's begin with the new Uni-Volt system. This remarkable mechanical "brain" automatically provides either 110 volt or 12 volt power. No switches to flick — nothing to think about. Just turn on whatever you need — lights, appliances, even the vent and range fan — and the Uni-Volt makes them work whether you are hooked up or not! When you are hooked up, the Uni-Volt recharges your battery to a safe level. The new and exclusive variable storage feature lets you convert all storage areas to meet your needs. The lightweight, styrene drawers slip out to leave plenty of shelves; the shelves slide out to create huge open storage for suitcases and other big, bulky items. The new credenza table offers ample eating area for six adults and yet doesn't take up priceless living area; it simply disappears into the wall when not in use! The new water pump now delivers

3 gallons of water per minute, silently and efficiently, under constant pressure. We've even improved on the exclusive one-stop service center. Now, all services, including the water inlet, are in one handy compartment where they remain clean and protected from the elements. Interiors are more luxurious too with the lavish use of hand-rubbed African mahogany and black walnut woods. On International models, interior walls are decorative vinyl fabric same as the new jetliners. Scratches, spills, road grime and hand prints simply wipe away! The list of new features for 1965 is almost endless. These are just a few of the major changes that will make travel adventure even more luxurious than ever for Airstream owners. And, in 1965, we've added three new Airstreams to the line... the new 17-foot Caravel with the same standard width and height as other Airstreams and the enlarged 20-foot Globe Trotter now in both twin bed and double bed models for the first time. If you don't own an Airstream, you're missing out on years of added convenience and luxury. If your Airstream is getting on in years, you're in for a big surprise... the 1965 model is the most advanced Airstream we've ever offered the trailering public. See your Airstream dealer right away for a free demonstration ride... there's a whole world out there just waiting to be explored!

*Free! Big, new catalog in living color.  
Thrilling as a world cruise. Write today!*

**AIRSTREAM** INC.

Write to nearest factory: 130 Church Street, Jackson Center, Ohio — 12804 E. Firestone Boulevard, Santa Fe Springs 9, California



New credenza table disappears into wall



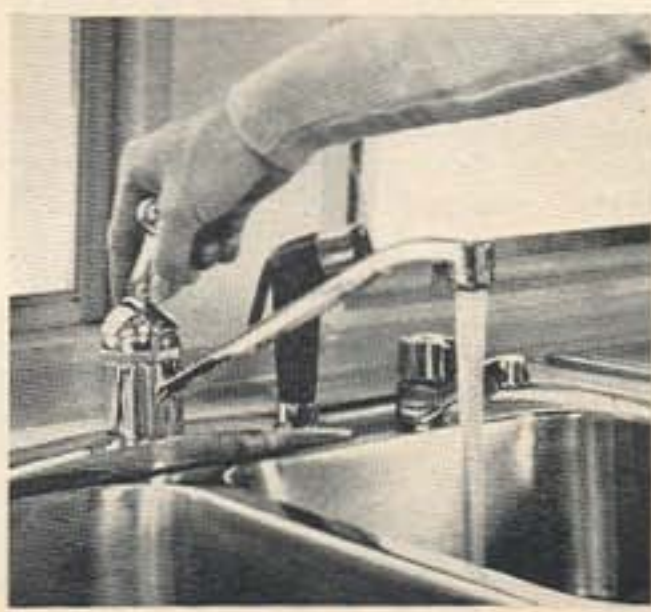
Discover real travel adventure — go Airstream!



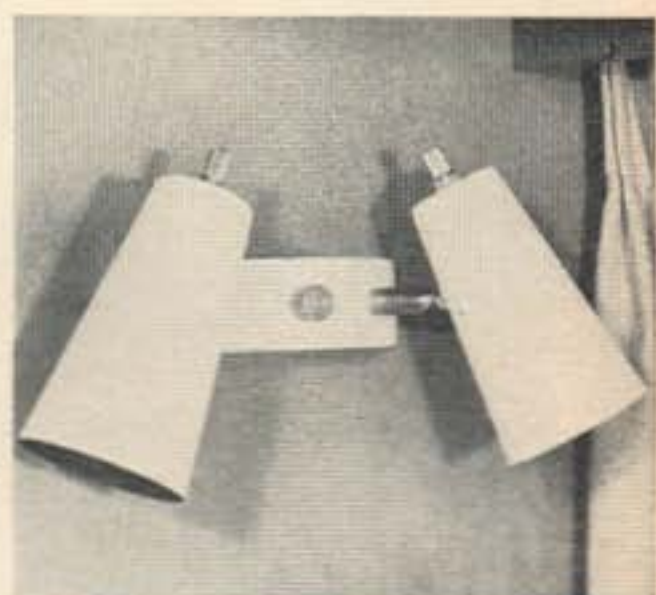
New variable storage means room for more



Airline bathroom will always stay beautiful



Pump delivers water under constant pressure

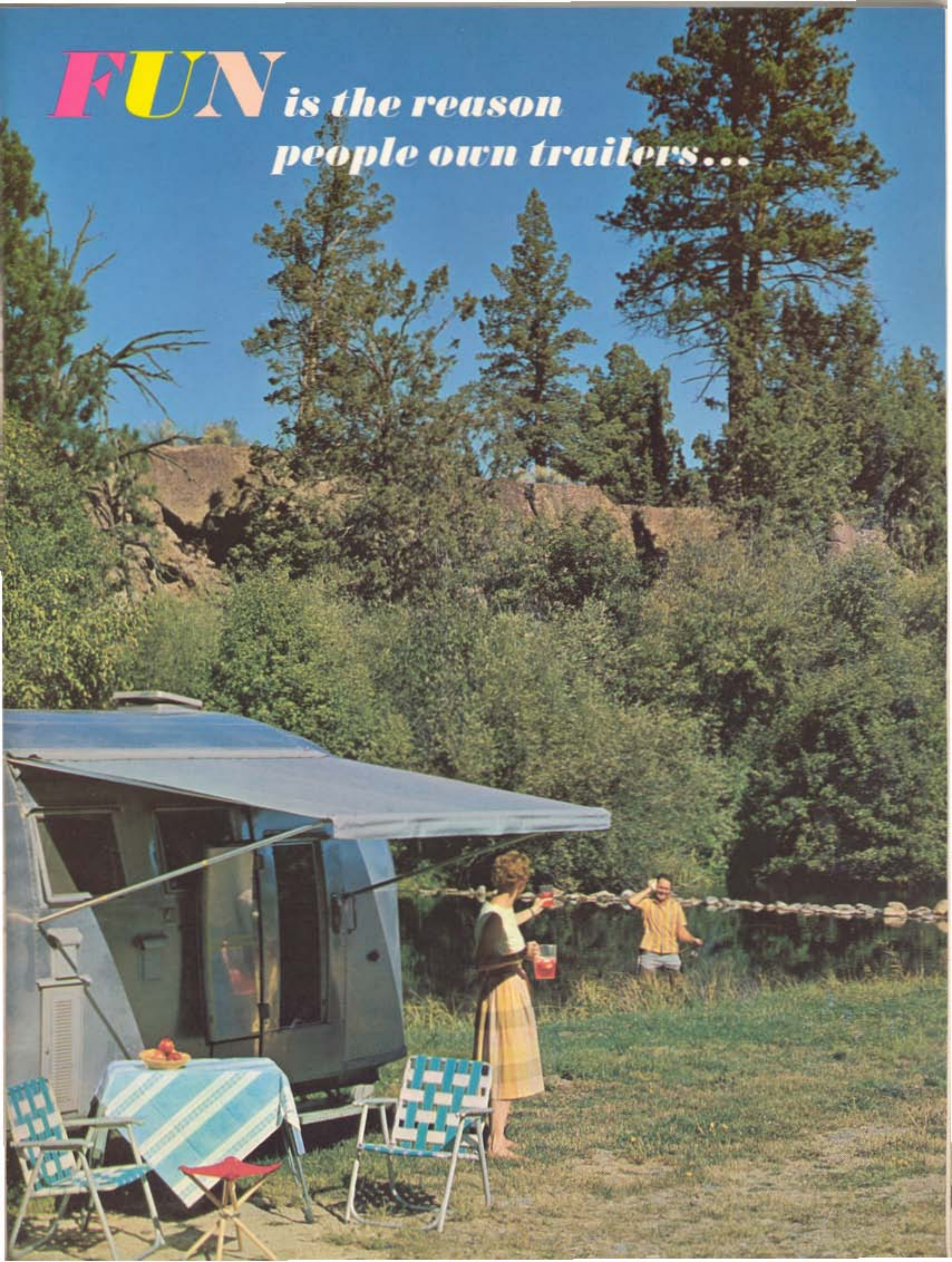


Uni-Volt — automatic power hooked up or not



All utilities in one convenient place

**FUN** is the reason  
people own trailers...



# AIRSTREAM, INC.

SANTA FE SPRINGS, CALIFORNIA

1964

EFFECTIVE AUGUST 1963

SERIAL NUMBER BY DOOR.

AIRSTREAM TRAVEL TRAILER--6-9 WIDE

BAMBI T6S S-C

41-S-1001

3095

1950

17

AIRSTREAM TRAVEL TRAILER--7-4 WIDES

GLOBETROTTER TS&B S-C

41-S-2004

4095

2890

19

SAFARI LAND YACHT TS&B S-C

042-S-3006

5075

3100

22

SAFARI INTL. TS&B S-C

042-S-3006

5780

3100

22

TRADEWIND LAND YACHT TS&B S-C

042-S-4005

5405

3480

24

TRADEWING INTL. TS&B S-C

042-S-4005

6165

3480

24

OVERLANDER LAND YACHT TS&B S-C

041-S-5004

6095

3930

26

OVERLANDER INTL. TS&B S-C

041-S-5004

6840

3930

26

AMBASSADOR LAND YACHT TS&B S-C

042-S-6005

6565

4280

28

AMBASSADOR INTL. TS&B S-C

042-S-6005

7275

4280

28

SOVEREIGN LAND YACHT TS&B S-C

142-S-7002

6945

4500

30

SOVEREIGN INTL. TS&B S-C

142-S-7002

7608

4500

30

| MODEL OR NAME AND DESCRIPTION | SERIAL NUMBER | S.R.P. | WEIGHT | LENGTH |
|-------------------------------|---------------|--------|--------|--------|
|-------------------------------|---------------|--------|--------|--------|

## JACKSON CENTER, OHIO

1964

EFFECTIVE AUGUST 1963

SERIAL NUMBER BY DCOR.

AIRSTREAM TRAVEL TRAILER--6-9 WIDE

BAMBI T&amp;S S-C

S-017410001

3095

1950

17

AIRSTREAM TRAVEL TRAILER--7-4 WIDES

GLOBETROTTER TS&amp;B S-C

S-019410001

4095

2890

19

SAFARI LAND YACHT TS&amp;B S-C

S-022420001

5075

3100

22

SAFARI INTL. TS&amp;B S-C

S-122410001

5780

3100

22

TRADEWIND LAND YACHT TS&amp;B S-C

S-024420001

5405

3480

24

TRADEWIND INTL. TS&amp;B S-C

S-124420008

6165

3480

24

OVERLANDER LAND YACHT TS&amp;B S-C

S-026420003

5095

3930

26

OVERLANDER INTL. TS&amp;B S-C

S-126420001

6840

3930

26

AMBASSADOR LAND YACHT TS&amp;B S-C

S-028410033

6565

4280

28

AMBASSADOR INTL. TS&amp;B S-C

S-128420001

7275

4280

28

SOVEREIGN LAND YACHT TS&amp;B S-C

S-030410021

6945

4500

30

SOVEREIGN INTL. TS&amp;B S-C

S-130420001

7608

4500

30









*Bambi II...  
shortest distance between  
you and adventure!*

When you own a Bambi II nothing stands between you and high adventure. Just roll your luxuriously appointed beach cabana right alongside the sandy shore. Playful waves will show off for you all day and lull you into sound sleep at night. Here you can lose all the cares and pressures of everyday life. Toss them into the deep... set them adrift like castaways and leave them to the wind and the sea. They'll not come back. Let your paintbrush capture inspiring seascapes... bring them back on film... or just fill your eyes with beauty and lock it in your heart forever! The Bambi II is the first travel trailer propor-



tioned to the small car concept of American motoring. It's both light and lithe and follows your compact car as if it was its shadow. But don't let its pint size fool you, it is every inch an Airstream. This remarkable 17-foot miniature Land Yacht provides sleeping accommodations for *four*, complete bathroom with roomy shower, gas water heater, forced air heat, lights and refrigeration . . . all totally independent of outside sources! The popular Bambi II is a limited production model, so order early. Your friendly Airstream dealer will be glad to let you test-tow it yourself. Come in soon . . . how about today?

**FREE! BIG, NEW CATALOG IN LIVING COLOR.  
THRILLING AS A WORLD CRUISE. WRITE TODAY!**

**AIRSTREAM INC.**

*write nearest factory:*

130 CHURCH STREET, JACKSON CENTER, OHIO  
12804 E. FIRESTONE BLVD., SANTA FE SPRINGS 9, CALIF.

CIRCLE 1 IN LITERATURE LIBRARY