

# TRP INTERNATIONAL, LLC.

## AGRICULTURAL DIVISION



Agricultural Division





# TRP International, LLC.

Throughout this catalog a TRP Service Mark appears next to those products manufactured by TRP.



## CONTENTS

<b>TRP International, LLC</b> .....	3
<b>Products</b>	
AG Hub Glossary .....	4
AG Hubs .....	5-13
4 Bolt AG Hub (10-4, 12-4, 669, 633) .....	5
5 Bolt AG Hub (20-5, 736, 511, 25-5, 719).....	6
6 Bolt AG Hub (20-6, 25-6, 30-6, 35-6, 888, 611, 887B, 890, 783, 803, 660).....	7-9
8 Bolt AG Hub (45-5, 778, 813B, 819B, 821, 60-8B, 75-8B, 80-8B).....	10-11
10 Bolt AG Hub (871B, 873B, 881, 981).....	12-13
AG Brake Drums / Brakes.....	14-15
AG Spindles .....	16-19
Tapered Roller Bearings .....	20
AG Grease Seals .....	21
AG Dust Caps .....	22
Spindle Fasteners .....	23
Fasteners / U-Bolts .....	24
Notes.....	25
Custom Manufactured Components .....	26-27
<b>High Speed Products</b>	
Axle & Suspension Component .....	28
Terms and Conditions .....	29



# TRP Agricultural Division



TRP Agricultural Division is a supplier of spindles, hubs, drums, brakes, bearings, grease seals, dust caps and other related components to the Agricultural market. While we are committed to carrying an extensive inventory of the most popular items, we have the resources in place to work with customer designed products as well.

By utilizing our domestic manufacturing capabilities we provide a broad range of high quality, competitively priced components to the agricultural market. Providing products manufactured to specific customer requirements.



The above images are representative of the products available through TRP Agricultural Division.





# TRP International, LLC



Formed in 1992, TRP International, Inc. is a diversified manufacturing and distribution corporation. At TRP we talk about “filling in the white space” as a way of growing the company. This strategy allows us to expand our product offerings, participate in new market segments, and maintain a competitive position while staying close to the things we know. We accomplish this by introducing new products, enhancing current product lines, partnering with other companies or by making acquisitions. Whatever path we take, our goal is to provide our customers with an expansive line of quality products distributed on schedule at competitive prices with responsive and professional service.

Through the TRP group of companies and global partners we provide products to a variety of ground transportation equipment industries. By leveraging our expertise in the areas of Engineering, Manufacturing, International Trade and Distribution combined with a commitment to ongoing investments in technology and people, our objective is to share in the success of our customers by helping them maximize their efficiency while minimizing costs.



**Engineering** – Our engineering staff has experience in various design and manufacturing environments including leaf springs, tapered roller bearings, closed-die forgings, metal stampings, and CNC machining. Our resources include professional mechanical, quality, and metallurgical engineers. With these skills we are striving every day to improve the overall cost and quality of the products we offer. TRP has a focus on continuous improvement that is reflected in investments in computer aided design (CAD) software, and a coordinate measuring machine (CMM). These tools help our engineers assist you in making the right choice for your components.

**Manufacturing** – The TRP companies take pride in the capabilities and efficiency of each piece of equipment used to manufacture our products. Recent investments in a new Programmable CMM, three new Live Tool Lathes, a 400mm Horizontal Machining Center, a 500mm Horizontal Machining Center, as well as a new Drill and Tap Machining Center are just a sampling of the investments made for the improvement of manufacturing. We strive to incorporate lean principles to keep costs down in our production facilities. Our charter is to “find waste and eliminate it”. Each facility takes pride in shipping quality products and maintains a quality system that builds the framework for verifying that we meet customer specifications.



**International Trade** – With over 28 years of international trade experience and qualified TRP personnel working through liaison offices in Italy and China we have the expertise necessary to communicate, consult, coordinate and execute the many facets of importing products to North America from abroad.

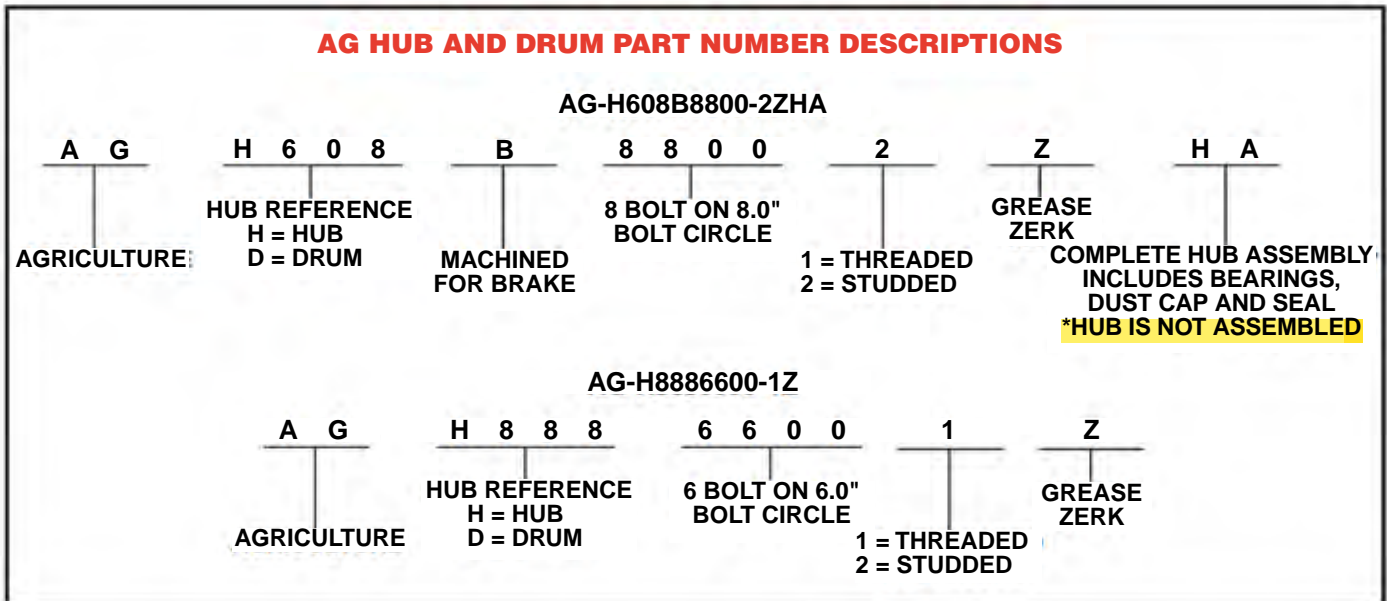
**Distribution** – With state of the art technology for order processing and fulfillment combined with strategically located distribution centers, we can effectively serve the requirements of customers from coast to coast in the U.S., as well as Canada and Mexico. Our constant attention to logistics and evaluation of carrier performance and pricing, assures the most efficient, cost effective shipping methods resulting in faster delivery and lower total product costs.





# AG HUB GLOSSARY

- Bolt Circle** Normal diameter which bolt holes are located.
- Capacity** Load rating given to a hub based on 20 m.p.h. maximum speed, using recommended wheel offset.
- Pilot** Normal diameter center hole that fits over hub or axle.
- Wheel Offset**
  - Negative offset, or outset, is when the center line of the wheel is located outboard or away from the face of the hub.
  - Positive offset, or inset, is when the center line of the wheel is located inboard or behind the face of the hub.
  - Zero offset is when the center line of the wheel is located directly in line with the face of the hub.



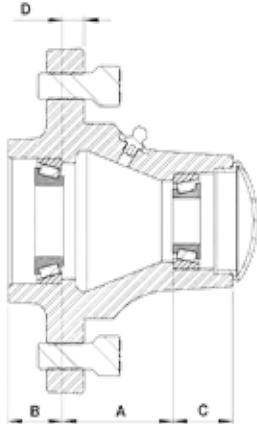
• The specifications and dimensions above are for reference only.



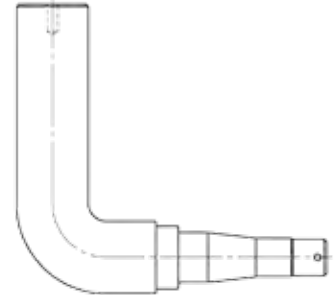
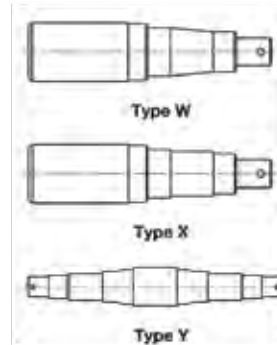
# AG HUB 4 BOLT



**5.00" BOLT CIRCLE 3.62" PILOT**



633 Shown



Type Z

HUB REFERENCE	10-4*	12-4	669	633
Capacity Rating	1000#	1250#	1250#	1500#
Wheel Offset	0.38" negative	0.38" negative	0.38" negative	0.38" negative
Hub - Part #	AG-H1044500-1Z	AG-H1244500-1Z	AG-H6694500-1Z	AG-H6334500-1Z
Inner Cup - Part #	L-44610	LM-67010	LM-67010	LM-67010
Outer Cup - Part #	L-44610	LM-11910	LM-11910	LM-11910
Wheel Stud - Part #	NA	NA	NA	NA
Hub Assy. - Part #	AG-H1044500-1ZHA	AG-H1244500-1ZHA	AG-H6694500-1ZHA	AG-H6334500-1ZHA
Hub - Part #	AG-H1044500-1Z	AG-H1244500-1Z	AG-H6694500-1Z	AG-H6334500-1Z
Inner Cone - Part #	L-44643	LM-67048	LM-67048	LM-67048
Outer Cone - Part #	L-44643	LM-11949	LM-11949	LM-11949
Dust Cap - Part #	AG-DC-198Z	AG-DC-195Z	AG-DC-195Z	AG-DC-196ALTZ
Wheel Bolt - Part #	AG-WB1000Z	AG-WB1000Z	AG-WB1000Z	AG-WB1000Z
Wheel Nut - Part #	NA	NA	NA	NA
Grease Seal - Part #	AG-GS-19871250SL	AG-GS-23321625SL	AG-GS-23321500SL	AG-GS-23321500SL
SPINDLE				
Spindle - Part #	SP-104125-085	SP-124163-100	SP-669163-100	SP-633163-105
Spindle No. (see pg. 18-19)	1	2	3	4
Nut - Part #	AG-FA-SN0750	AG-FA-SN0625	AG-FA-SN0625	AG-FA-SN0750
Washer - Part #	AG-FA-SW0750	AG-FA-SW0625	AG-FA-SW0625	AG-FA-SW0750
Cotter Pin - Part #	AG-FA-CP175	AG-FA-CP175	AG-FA-CP175	AG-FA-CP175
Types Available	W,X,Y	W,X,Y	W,X,Y	W,X,Y
HUB DIMENSION REFERENCE				
A	2.53"	1.16"	1.16"	2.05"
B	0.85"	0.94"	0.94"	1.00"
C	1.00"	0.96"	0.88"	1.10"
D	1.25"	0.38"	0.38"	0.38"

- All spindle part numbers noted above are based on Type W Spindle. Additional spindles manufactured to customer specifications.
- All AG hubs include grease zerk.
- The specifications and dimensions above are for reference only.
- \* Non-stock items. Minimum order requirements and longer lead time will apply.

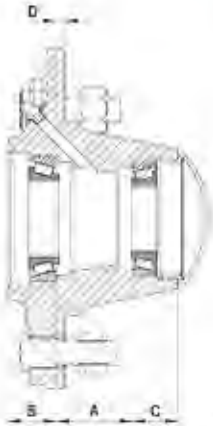




# AG HUB 5 BOLT



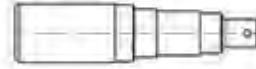
**5.50" BOLT CIRCLE 4.00" PILOT**



736 Shown



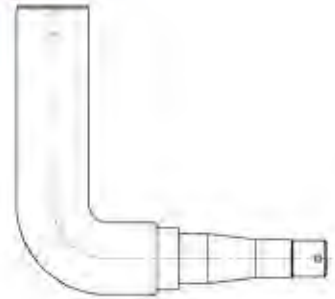
Type W



Type X



Type Y



Type Z

HUB REFERENCE	20-5	736	511*	25-5	719
Capacity Rating	2000#	2000#	2000#	2500#	2760#
Wheel Offset	0.25" negative	0.25" negative	0.25" negative	0.25" negative	0.25" negative
Hub - Part #	AG-H2055550-2Z	AG-H7365550-2Z	AG-H5115550-1Z	AG-H2555550-2Z	AG-H7195550-2Z
Inner Cup - Part #	LM-67010	LM-67010	LM-67010	LM-48510	LM-48510
Outer Cup - Part #	LM-11910	LM-11910	LM-11910	LM-67010	LM-67010
Wheel Stud - Part #	AG-WS1280Z	AG-WS1280Z	NA	AG-WS1280Z	AG-WS1280Z
Hub Assy. - Part #	AG-H2055550-2ZHA	AG-H7365550-2ZHA	AG-H5115550-1ZHA	AG-H2555550-2ZHA	AG-H7195550-2ZHA
Hub - Part #	AG-H2055550-2Z	AG-H7365550-2Z	AG-H5115550-1Z	AG-H2555550-2Z	AG-H7195550-2Z
Inner Cone - Part #	LM-67048	LM-67048	LM-67048	LM-48548	LM-48548
Outer Cone - Part #	LM-11949	LM-11949	LM-11949	LM-67048	LM-67048
Dust Cap - Part #	AG-DC-195Z	AG-DC-195Z	AG-DC-195Z	AG-DC-244Z	AG-DC-244Z
Wheel Bolt - Part #	NA	NA	AG-WB1250Z	NA	NA
Wheel Nut - Part #	AG-WN1220Z	AG-WN1220Z	NA	AG-WN1220Z	AG-WN1220Z
Grease Seal - Part #	AG-GS-23321625SL	AG-GS-23321500SL	AG-GS-23321500SL	AG-GS-27221750SL	AG-GS-26271500DL
SPINDLE					
Spindle - Part #	SP-205163-100	SP-736163-105	SP-736163-105	SP-255175-125	SP-719175-115
Spindle No. (see pg. 18-19)	5	6	6	7	8
Nut - Part #	AG-FA-SN0625	AG-FA-SN0750	AG-FA-SN0750	AG-FA-SN0750	AG-FA-SN0875
Washer - Part #	AG-FA-SW0625	AG-FA-SW0750	AG-FA-SW0750	AG-FA-SW0750-H	AG-FA-SW0875
Cotter Pin - Part #	AG-FA-CP175	AG-FA-CP175	AG-FA-CP175	AG-FA-CP175	AG-FA-CP175
Types Available	W,X,Y	W,X,Y	W,X,Y	W,X,Y	W,X,Y
HUB DIMENSION REFERENCE					
A	2.00"	2.00"	2.00"	1.56"	1.56"
B	1.00"	1.00"	1.00"	1.03"	1.00"
C	0.94"	0.94"	0.94"	0.94"	1.06"
D	0.63"	0.62"	0.63"	0.19"	0.22"

- All spindle part numbers noted above are based on Type W Spindle. Additional spindles manufactured to customer specifications.
- All AG hubs include grease zerk.
- The specifications and dimensions above are for reference only.
- \* Non-stock items. Minimum order requirements and longer lead time will apply.



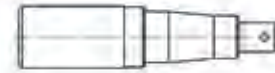
# AG HUB 6 BOLT



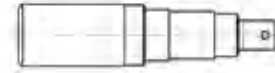
**6.00" BOLT CIRCLE 4.62" PILOT**



30-6 Shown



Type W



Type X



Type Y

HUB REFERENCE	20-6*	25-6*	30-6	35-6	35-6
Capacity Rating	DISCONTINUED 2000#	DISCONTINUED 2500#	3000#	3500#	3500#
Wheel Offset	1.12" positive	1.12" positive	1.12" positive	1.12" positive	1.12" positive
Hub - Part #	AG-H2066600-2Z	AG-H2566600-2Z	AG-H3066600-2Z	AG-H3566600-1Z	AG-H3566600-2Z
Inner Cup - Part #	LM-67010	LM-48510	LM-29710	LM-501310	LM-501310
Outer Cup - Part #	LM-11910	LM-67010	LM-67010	LM-67010	LM-67010
Wheel Stud - Part #	AG-WS1280Z	AG-WS1280Z	AG-WS1280Z	NA	AG-WS1400Z
Hub Assy. - Part #	AG-H2066600-2ZHA	AG-H2566600-2ZHA	AG-H3066600-2ZHA	AG-H3566600-1ZHA	AG-H3566600-2ZHA
Hub - Part #	AG-H2066600-2Z	AG-H2566600-2Z	AG-H3066600-2Z	AG-H3566600-1Z	AG-H3566600-2Z
Inner Cone - Part #	LM-67048	LM-48548	LM-29749	LM-501349	LM-501349
Outer Cone - Part #	LM-11949	LM-67048	LM-67048	LM-67048	LM-67048
Dust Cap - Part #	AG-DC-195Z	AG-DC-244Z	AG-DC-244Z	AG-DC-244Z	AG-DC-244Z
Wheel Bolt - Part #	NA	NA	NA	AG-WB1125Z	NA
Wheel Nut - Part #	AG-WN1220Z	AG-WN1220Z	AG-WN1220Z	NA	AG-WN91618Z
Grease Seal - Part #	AG-GS-23321625SL	AG-GS-27221750SL	AG-GS-27221750SL	AG-GS-30662000SL	AG-GS-30662000SL
SPINDLE					
Spindle - Part #	SP-205163-100	SP-255175-125	SP-306175-120	SP-356200-130	SP-356200-130
Spindle No. (see pg. 18-19)	5	7	9	10	11
Nut - Part #	AG-FA-SN0625	AG-FA-SN0750	AG-FA-SN0750	AG-FA-SN0750	AG-FA-SN0750
Washer - Part #	AG-FA-SW0625	AG-FA-SW0750-H	AG-FA-SW0875	AG-FA-SW0750-H	AG-FA-SW0750-H
Cotter Pin - Part #	AG-FA-CP175	AG-FA-CP175	AG-FA-CP175	AG-FA-CP175	AG-FA-CP175
Types Available	W,X,Y	W,X,Y	W,X,Y	W,X,Y	W,X,Y
HUB DIMENSION REFERENCE					
A	2.00"	1.56"	2.19"	2.84"	2.84"
B	1.00"	1.03"	1.00"	1.44"	1.44"
C	0.94"	0.94"	0.94"	0.97"	0.97"
D	1.94"	1.44"	1.94"	1.56"	1.56"

- All spindle part numbers noted above are based on Type W Spindle. Additional spindles manufactured to customer specifications.
- All AG hubs include grease zerk.
- The specifications and dimensions above are for reference only.
- \* Non-stock items. Minimum order requirements and longer lead time will apply.

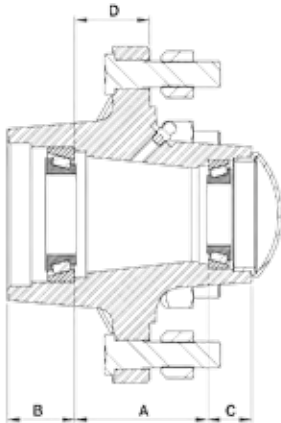




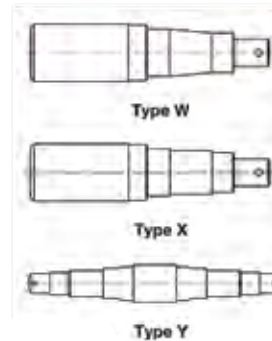
# AG HUB 6 BOLT



**6.00" BOLT CIRCLE 4.62" PILOT**



888 Shown



HUB REFERENCE	888	888	611	<del>887B</del> 4370# <b>DISCONTINUED</b>
Capacity Rating	3560#	3560#	3600#	
Wheel Offset	1.12" positive	1.12" positive	1.12" positive	1.12" positive
Hub - Part #	AG-H8886600-1Z	AG-H8886600-2Z	AG-H6116600-1Z	AG-H887B6600-2Z
Inner Cup - Part #	JL-69310	JL-69310	LM-29710	LM-501310
Outer Cup - Part #	LM-67010	LM-67010	LM-67010	LM-67010
Wheel Stud - Part #	NA	AG-WS1280Z	NA	AG-WS1060Z
Hub Assy. - Part #	AG-H8886600-1ZHA	AG-H8886600-2ZHA	AG-H6116600-1ZHA	AG-H887B6600-2ZHA
Hub - Part #	AG-H8886600-1Z	AG-H8886600-2Z	AG-H6116600-1Z	AG-H887B6600-2Z
Inner Cone - Part #	JL-69349	JL-69349	LM-29749	LM-501349
Outer Cone - Part #	LM-67048	LM-67048	LM-67048	LM-67048
Dust Cap - Part #	AG-DC-244Z	AG-DC-244Z	AG-DC-244Z	AG-DC-244Z
Wheel Bolt - Part #	AG-WB1250Z	NA	AG-WB1250Z	NA
Wheel Nut - Part #	NA	AG-WN1220Z	NA	AG-WN1220Z
Grease Seal - Part #	AG-GS-25661625SL	AG-GS-25661625SL	AG-GS-27221750SL	AG-GS-30052250SL
<b>SPINDLE</b>				
Spindle - Part #	SP-888175-105	SP-888200-125	SP-611175-140	SP-887248-150
Spindle No. (see pg. 18-19)	11, 12, 12A	11, 12, 12A	13	14
Nut - Part #	AG-FA-SN0875	AG-FA-SN0875	AG-FA-SN1000	AG-FA-SN0875
Washer - Part #	AG-FA-SW0875	AG-FA-SW0875	AG-FA-SW1000	AG-FA-SW0875
Cotter Pin - Part #	AG-FA-CP175	AG-FA-CP175	AG-FA-CP205	AG-FA-CP175
Types Available	W,X,Y	W,X,Y	W,X,Y	W,X,Y
<b>HUB DIMENSION REFERENCE</b>				
A	1.55"	1.55"	1.57"	2.00"
B	1.06"	1.06"	1.06"	1.12"
C	1.06"	1.06"	1.00"	1.06"
D	1.50"	1.50"	1.62"	1.68"
Brake Bolt Pattern	NA	NA	NA	6-5.5" / 4.375" Pilot

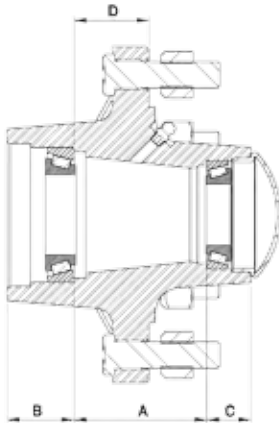
- All spindle part numbers noted above are based on Type W Spindle. Additional spindles manufactured to customer specifications.
- All AG hubs include grease zerk.
- The letter "B" in AG hub part numbers indicates hub is machined for brake.
- The specifications and dimensions above are for reference only.
- ★ *Non-stock items. Minimum order requirements and longer lead time will apply.*



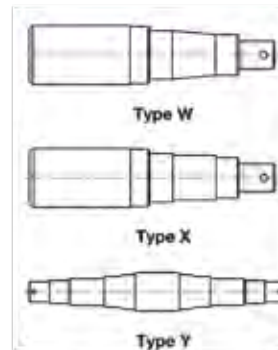
# AG HUB 6 BOLT



**6.00" BOLT CIRCLE 4.62" PILOT**



803 Shown



HUB REFERENCE	890*	783*	803	660
Capacity Rating	DISCONTINUED 4570#	DISCONTINUED 4570#	4910#	3500#
Wheel Offset	1.12" positive	1.12" positive	1.12" positive	1.12" positive
Hub - Part #	AG-H8906600-2Z	AG-H7836600-1Z	AG-H8036600-1Z	AG-H660-42-2
Inner Cup - Part #	LM-501310	LM-501310	25520	25520
Outer Cup - Part #	LM-67010	LM-67010	25821	14276
Wheel Stud - Part #	AG-WS1060Z	NA	NA	AG-WS-2310
Hub Assy. - Part #	AG-H8906600-2ZHA	AG-H7836600-1ZHA	AG-H8036600-1ZHA	AG-H660-42-2HA
Hub - Part #	AG-H8906600-2Z	AG-H7836600-1Z	AG-H8036600-1Z	AG-H660-42-2
Inner Cone - Part #	LM-501349	LM-501349	25590	25580
Outer Cone - Part #	LM-67048	LM-67048	25877	14125A
Dust Cap - Part #	AG-DC-244Z	AG-DC-244Z	AG-DC-315Z	AG-DC-275
Wheel Bolt - Part #	NA	AG-WB1250Z	AG-WB1125Z	NA
Wheel Nut - Part #	AG-WN1220Z	NA	NA	AG-WN91618Z
Grease Seal - Part #	AG-GS-30052250SL	AG-GS-30051875SL	AG-GS-36282000SL	GS-2250DL
SPINDLE				
Spindle - Part #	SP-887248-150	SP-783200-130	SP-803213-155	SP-22542NW
Spindle No. (see pg. 18-19)	14	15	16	26
Nut - Part #	AG-FA-SN0875	AG-FA-SN0875	AG-FA-SN0875	AG-FA-SN100R
Washer - Part #	AG-FA-SW0875	AG-FA-SW0875	AG-FA-SW0875-2	AG-FA-SW100R
Cotter Pin - Part #	AG-FA-CP175	AG-FA-CP175	AG-FA-CP175	AG-FA-CP213
Types Available	W,X,Y	W,X,Y	W,X,Y	W,X,Y
HUB DIMENSION REFERENCE				
A	2.00"	2.00"	2.50"	1.86"
B	1.31"	1.13"	1.38"	1.47"
C	1.03"	1.06"	1.13"	1.24"
D	1.62"	1.62"	1.75"	0.57"
Brake Bolt Pattern	NA	NA	NA	NA

- All spindle part numbers noted above are based on Type W Spindle. Additional spindles manufactured to customer specifications.
- All AG hubs include grease zerk, optional on AG-H660-42-2.
- The specifications and dimensions above are for reference only.
- \* Non-stock items. Minimum order requirements and longer lead time will apply.

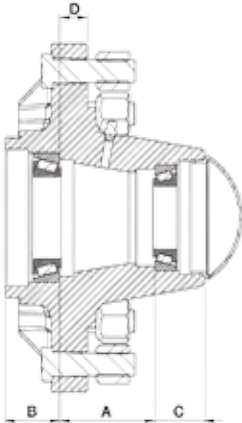




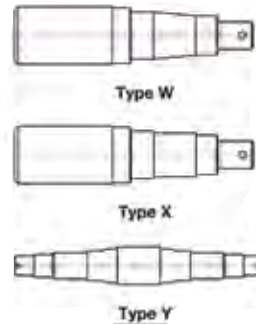
# AG HUB 8 BOLT



**8.00" BOLT CIRCLE 6.00" PILOT**



778 Shown



HUB REFERENCE	45-8	778	813B	819B
Capacity Rating	4500#	4910#	4910#	5790#
Wheel Offset	1.12" positive	1.50" negative	1.50" negative	1.50" negative
Hub - Part #	AG-H4588800-2Z	AG-H7788800-1Z	AG-H813B8800-2Z	AG-H819B8800-2Z
Inner Cup - Part #	LM-603011	25520	25520	3720
Outer Cup - Part #	LM-67010	25821	25821	2720
Wheel Stud - Part #	AG-WS1625Z	NA	AG-WS2310Z	AG-WS2310Z
Hub Assy. - Part #	AG-H4588800-2ZHA	AG-H7788800-1ZHA	AG-H813B8800-2ZHA	AG-H819B8800-2ZHA
Hub - Part #	AG-H4588800-2Z	AG-H7788800-1Z	AG-H813B8800-2Z	AG-H819B8800-2Z
Inner Cone - Part #	LM-603049	25590	25590	3780
Outer Cone - Part #	LM-67048	25877	25877	2790
Dust Cap - Part #	AG-DC-244Z	AG-DC-315Z	AG-DC-315Z	AG-DC-315Z
Wheel Bolt - Part #	NA	AG-WB1125Z	NA	NA
Wheel Nut - Part #	AG-WN5818Z	NA	AG-WN91618Z	AG-WN91618Z
Grease Seal - Part #	AG-GS-30662250SL	AG-GS-36282000SL	AG-GS-36282000SL	AG-GS-37562500SL
SPINDLE				
Spindle - Part #	SP-458225-140	SP-778213-155	SP-778213-155	SP-819275-145
Spindle No. (see pg. 18-19)	17	18	18	19
Nut - Part #	AG-FA-SN0750	AG-FA-SN0875	AG-FA-SN0875	AG-FA-SN0875
Washer - Part #	AG-FA-SW0750-H	AG-FA-SW0875-2	AG-FA-SW0875-2	AG-FA-SW0875-2
Cotter Pin - Part #	AG-FA-CP175	AG-FA-CP175	AG-FA-CP175	AG-FA-CP175
Types Available	W,X,Y	W,X,Y	W,X,Y	W,X,Y
HUB DIMENSION REFERENCE				
A	2.83"	2.50"	2.50"	2.44"
B	1.26"	1.75"	1.75"	2.41"
C	0.97"	1.12"	1.12"	1.25"
D	1.38"	0.88"	0.88"	1.25"
Brake Bolt Pattern	NA	NA	8-8.0" / 5.75" Pilot	8-8.0" / 5.75" pilot

- All spindle part numbers noted above are based on Type W Spindle. Additional spindles manufactured to customer specifications.
- All AG hubs include grease zerk.
- The letter "B" in AG hub part numbers indicates hub is machined for brake.
- The specifications and dimensions above are for reference only.
- ★ *Non-stock items. Minimum order requirements and longer lead time will apply.*

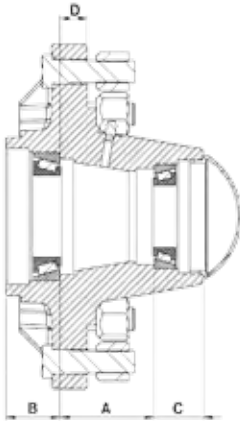




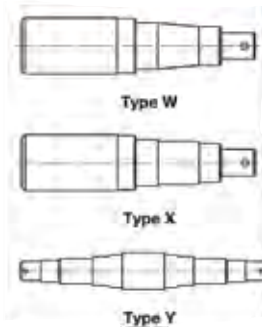
# AG HUB 8 BOLT



**8.00" BOLT CIRCLE 6.00" PILOT**



75-8 Shown



HUB REFERENCE	821	60-8B	75-8B	80-8B
Capacity Rating	5790#	6000#	7500#	8000#
Wheel Offset	1.50" negative	0.38" positive	0.38" negative	0.38" positive
Hub - Part #	AG-H8218800-1Z	AG-H608B8800-2Z	AG-H758B8800-2Z	AG-H808B8800-2Z
Inner Cup - Part #	3720	JLM-506810	382A	JLM-506810
Outer Cup - Part #	2720	LM-501310	LM-501310	LM-501310
Wheel Stud - Part #	NA	AG-WS1625Z	AG-WS1625Z	AG-WS1500Z
Hub Assy. - Part #	AG-H8218800-1ZHA	AG-H608B8800-2ZHA	AG-H758B8800-2ZHA	AG-H808B8800-2ZHA
Hub - Part #	AG-H8218800-1Z	AG-H608B8800-2Z	AG-H758B8800-2Z	AG-H808B8800-2Z
Inner Cone - Part #	3780	JLM-506849	387AS	JLM-506849
Outer Cone - Part #	2790	LM-501349	LM-501349	LM-501349
Dust Cap - Part #	AG-DC-315Z	AG-DC-313Z	AG-DC-313Z	AG-DC-313Z
Wheel Bolt - Part #	AG-WB1500Z	NA	NA	NA
Wheel Nut - Part #	NA	AG-WN5818Z	AG-WN5818Z	AG-WN5818Z
Grease Seal - Part #	AG-GS-37562500SL	AG-GS-37562750SL	AG-GS-40083000SL	AG-GS-37562750SL
SPINDLE				
Spindle - Part #	SP-819275-145	SP-608275-140	SP-758300-160	SP-808300-160
Spindle No. (see pg. 18-19)	19	20	21	22
Nut - Part #	AG-FA-SN0875	AG-FA-SN1000	AG-FA-SN1000	AG-FA-SN1000
Washer - Part #	AG-FA-SW0875-2	AG-FA-SW1055-H	AG-FA-SW1055-H	AG-FA-SW1055-H
Cotter Pin - Part #	AG-FA-CP175	AG-FA-CP205	AG-FA-CP205	AG-FA-CP205
Types Available	W,X,Y	W,X,Y	W,X,Y	W,X,Y
HUB DIMENSION REFERENCE				
A	2.44"	2.56"	3.77"	2.72"
B	2.41"	1.50"	1.52"	1.50"
C	1.25"	1.37"	1.39"	1.37"
D	1.34"	0.75"	1.66"	0.86"
Brake Bolt Pattern	NA	8-5.5" / 4.375" Pilot	8-5.5" / 4.50" Pilot	8-5.5" / 4.375" Pilot

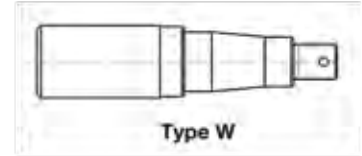
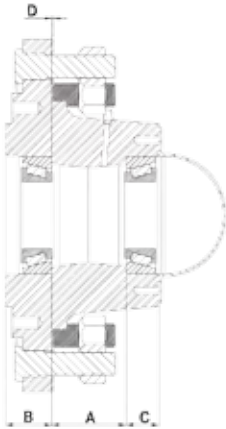
- All spindle part numbers noted above are based on Type W Spindle. Additional spindles manufactured to customer specifications.
- All AG hubs include grease zerk.
- The letter "B" in AG hub part numbers indicates hub is machined for brake.
- The specifications and dimensions above are for reference only.
- \* Non-stock items. Minimum order requirements and longer lead time will apply.



# AG HUB 10 BOLT



**11.25" BOLT CIRCLE 8.69" PILOT**



871 Shown

HUB REFERENCE	871B	873B
Capacity Rating	12,000	15,000
Wheel Offset	0.00"	0.00"
Hub - Part #	AG-H871B101125-2Z	AG-H873B101125-2Z
Inner Cup - Part #	39520	33462
Outer Cup - Part #	453A	453A
Wheel Stud - Part #	AG-WS1813Z	AG-WS1813Z
Hub Assy. - Part #	AG-H871B101125-2ZHA	AG-H873B101125-2ZHA
Hub - Part #	AG-H871B101125-2Z	AG-H873B101125-2Z
Inner Cone - Part #	39585	33275
Outer Cone - Part #	460	460
Dust Cap - Part #	AG-DC-575Z <b>***(W SCREWS)</b>	AG-DC-575Z <b>***(W SCREWS)</b>
Wheel Bolt - Part #	NA	NA
Wheel Nut - Part #	AG-WNF3416Z	AG-WNF3416Z
Grease Seal - Part #	AG-GS-45053000SL	AG-GS-46313375SL
SPINDLE		
Spindle - Part #	SP-871313-175	SP-873338-175
Spindle No. (see pg. 18-19)	23	24, 24A
Nut - Part #	AG-FA-SN1250	AG-FA-SN1250
Washer - Part #	AG-FA-SW1375	AG-FA-SW1375
Cotter Pin - Part #	AG-FA-CP200	AG-FA-CP200
Types Available	W	W
HUB DIMENSION REFERENCE		
A	2.81"	2.81"
B	1.75"	1.75"
C	1.25"	1.25"
D	0.06"	0.06"
Brake Bolt Pattern	6-8.25"	6-8.25"

**\*\*\*WHEN ORDERING THE COMPLETE ASSEMBLY, THE DUST CAP INCLUDES 4 each AG-FA-DC516 DUST CAP SCREWS**

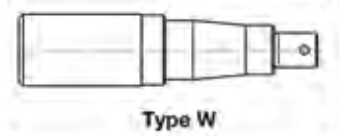
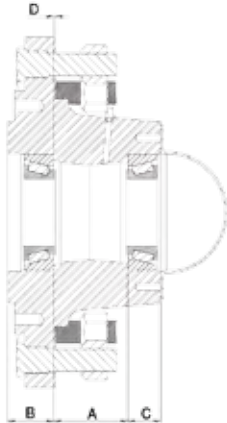
- All spindle part numbers noted above are based on Type W Spindle. Additional spindles manufactured to customer specifications.
- All AG hubs include grease zerk.
- The letter "B" in AG hub part numbers indicates hub is machined for brake.
- The specifications and dimensions above are for reference only.
- *\* Non-stock items. Minimum order requirements and longer lead time will apply.*



# AG HUB 10 BOLT



**13.19" BOLT CIRCLE 11.007" PILOT**



881 Shown

HUB REFERENCE	881	882*	981*
Capacity Rating	20,000	22,500	25,000
Wheel Offset	1.50" positive	1.50" positive	1.50" positive
Hub - Part #	AG-H881101319-2Z	AG-H882101319-2Z	AG-H981101319-2Z
Inner Cup - Part #	HM-218210	HM-218210	HM-218210
Outer Cup - Part #	HM-212011	HM-212011	HM-212011
Wheel Stud - Part #	AG-WS1813Z	AG-WS1813Z	AG-WS1813Z
Hub Assy. - Part #	AG-H881101319-2ZHA	AG-H882101319-2ZHA	AG-H981101319-2ZHA
Hub - Part #	AG-H881101319-2Z	AG-H882101319-2Z	AG-H981101319-2Z
Inner Cone - Part #	HM-218248	HM-218248	HM-218248
Outer Cone - Part #	HM-212049	HM-212049	HM-212049
Dust Cap - Part #	AG-DC-613Z *(W SCREWS)	AG-DC-613Z *(W SCREWS)	AG-DC-613Z *(W SCREWS)
Wheel Bolt - Part #	NA	NA	NA
Wheel Nut - Part #	AG-WNF3416Z	AG-WNF3416Z	AG-WNF3416Z
Grease Seal - Part #	AG-GS-60074375SL	AG-GS-60074375SL	AG-GS-60074375SL
SPINDLE			
Spindle - Part #	SP-881450-265	SP-881450-265	SP-881450-265
Spindle No. (see pg. 18-19)	25	25	25
Nut - Part #	AG-FA-SN2000	AG-FA-SN2000	AG-FA-SN2000
Washer - Part #	AG-FA-SW2125	AG-FA-SW2125	AG-FA-SW2125
Cotter Pin - Part #	AG-FA-CP350	AG-FA-CP350	AG-FA-CP350
Types Available	W	W	W
HUB DIMENSION REFERENCE			
A	3.25"	3.25"	3.25"
B	2.28"	2.28"	2.28"
C	1.72"	1.72"	1.72"
D	1.66"	1.66"	1.66"
Brake Bolt Pattern	NA	NA	NA

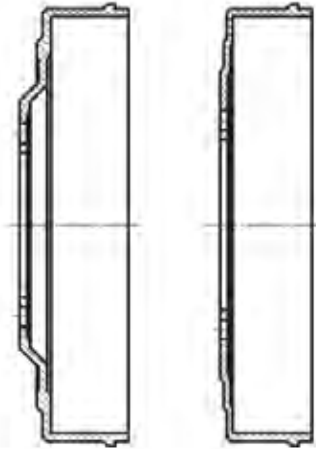
\*\*\*WHEN ORDERING THE COMPLETE ASSEMBLY, THE DUST CAP INCLUDES 4 each AG-FA-DC516 DUST CAP SCREWS

- All spindle part numbers noted above are based on Type W Spindle. Additional spindles manufactured to customer specifications.
- All AG hubs include grease zerk.
- The specifications and dimensions above are for reference only.
- \* Non-stock items. Minimum order requirements and longer lead time will apply.





# AG BRAKE DRUMS



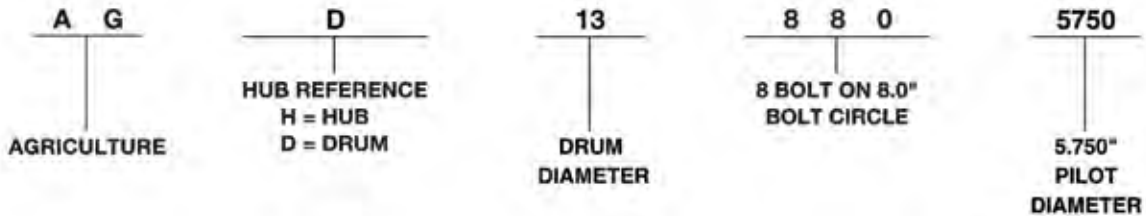
**Type A**

**Type B**

DRUM REFERENCE	AG-D13-6554375*	AG-D13-8554375	AG-D13-8554500	AG-D13-8805750
<i>Drum Size</i>	13"	13"	13"	13"
<i>Type</i>	A	A	A	B
<i>Bolt Circle</i>	6-5.5"	8-5.5"	8-5.5"	8-8.0"
<i>Bolt Holes</i>	6	8	8	8
<i>Bolt Hole Diameter</i>	.531"	.531"	.531"	.625"
<i>Pilot</i>	4.375"	4.375"	4.500"	5.750"
<i>Weight</i>	24#	24#	24#	22#

## AG HUB AND DRUM PART NUMBER DESCRIPTIONS

### AG-D13-8805750



- AG hub capacities are based on tractor speeds up to 20 mph and using recommended wheel offset.
- The specifications and dimensions above are for reference only.
- \* Non-stock items. Minimum order requirements and longer lead time will apply.



13" x 2-1/2" Free Backing shown



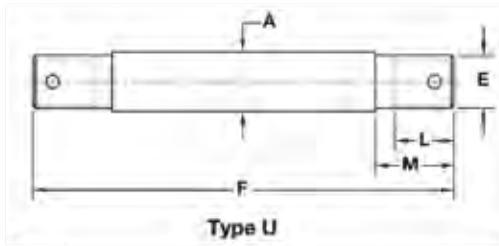
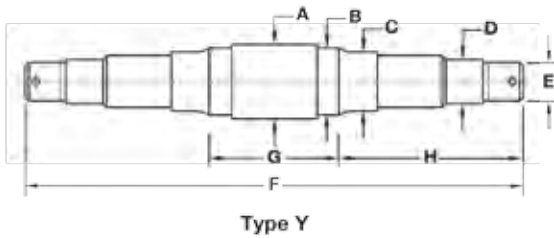
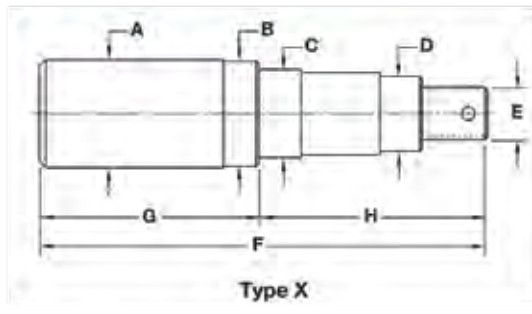
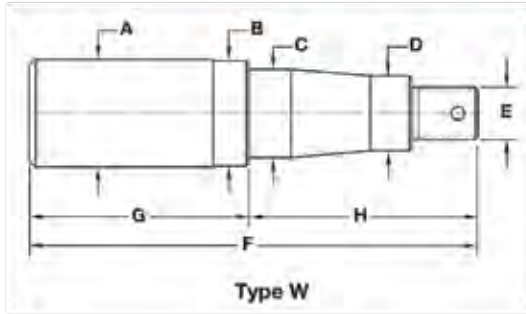
12" x 2" Uni-Servo shown

PART NUMBER	DISCRIPTION	FLANGE BOLT
AG-BK-13HFB-RH	Hydraulic brake, 13" x 2-1/2" Free Backing, E-coat, RH	4
AG-BK-13HFB-LH	Hydraulic brake, 13" x 2-1/2" Free Backing, E-coat, LH	4
BK-23510	Hydraulic brake, 12" x 2" Uni-Servo, E-coat, RH	5
BK-23511	Hydraulic brake, 12" x 2" Uni-Servo, E-coat, LH	5
BK-42028	Hydraulic brake, 12" x 2" Free Backing, E-coat, RH	5
BK-42029	Hydraulic brake, 12" x 2" Free Backing, E-coat, LH	5
BK-42028X	Hydraulic brake, 12" x 2" Free Backing, Dacromet, RH	5
BK-42029X	Hydraulic brake, 12" x 2" Free Backing, Dacromet, LH	5

\*Brake flanges are customized to your requirements.

- AG hub capacities are based on tractor speeds up to 20 mph and using recommended wheel offset.
- The specifications and dimensions above are for reference only.
- \* *Non-stock items. Minimum order requirements and longer lead time will apply.*

## SPINDLE TYPES

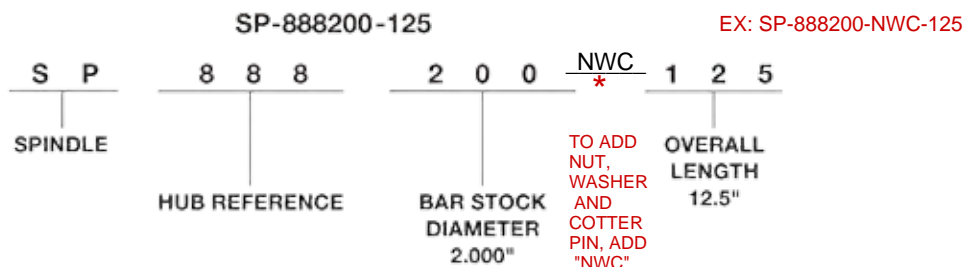


TRP offers a large selection of machined spindles in straight, bent, double ended or fork to meet your requirements. For special applications, we offer machining capabilities of bar stock up to 4.5" O.D. through the spindle. Other capabilities include milling, drilling, tapping, and keyways.

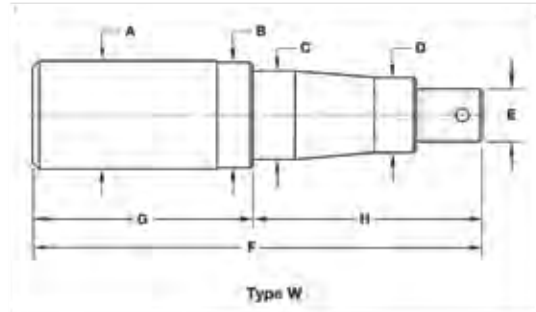
If you would like additional information regarding our machining capabilities, contact your sales representative.

\*\*\* AG SPINDLES WILL BE CD1045 MATERIAL UNLESS SPECIFIED OTHERWISE.  
EXCEPTION IS SP-22542, WHICH IS HR1045 MATERIAL.

### AG SPINDLE PART NUMBER DESCRIPTIONS

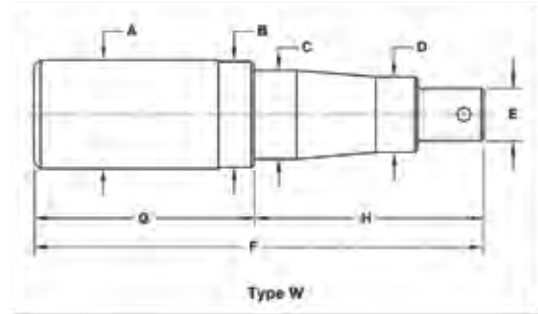






PART NUMBER	NO.	DIMENSIONS								FITS HUBS
		A	B	C	D	E	F	G	H	
<i>SP-104125-085</i>	1	1.250"	1.250"	1.000"	1.000"	3/4-16	8.50"	4.03"	4.47"	10-4
<i>SP-124163-100</i>	2	1.625"	1.625"	1.250"	0.750"	5/8-18	10.00"	6.88"	3.12"	12-4
<i>SP-669163-100</i>	3	1.625"	1.500"	1.250"	0.750"	5/8-18	10.00"	5.34"	4.66"	669
<i>SP-633163-105</i>	4	1.625"	1.500"	1.250"	0.750"	3/4-16	10.50"	5.84"	4.66"	633
<i>SP-205163-100</i>	5	1.625"	1.625"	1.250"	0.750"	5/8-18	10.00"	6.00"	4.00"	20-5, 20-6
<i>SP-736163-105</i>	6	1.625"	1.500"	1.250"	0.750"	3/4-16	10.50"	5.84"	4.66"	736, 511
<i>SP-255175-125</i>	7	1.750"	1.750"	1.375"	1.250"	3/4-16	12.50"	8.66"	3.84"	25-5, 25-6
<i>SP-719175-115</i>	8	1.750"	1.500"	1.375"	1.250"	7/8-14	11.50"	7.13"	4.38"	719
<i>SP-306175-120</i>	9	1.750"	1.750"	1.500"	1.250"	3/4-16	12.00"	7.53"	4.47"	30-6
<i>SP-356200-130</i>	10	2.000"	2.000"	1.625"	1.250"	3/4-16	13.00"	7.81"	5.19"	35-6
<i>SP-888175-105</i>	11	1.750"	1.625"	1.500"	1.250"	7/8-14	10.50"	6.66"	3.84"	888
<i>SP-888200-125</i>	12	2.000"	1.625"	1.500"	1.250"	7/8-14	12.50"	8.66"	3.84"	888
<i>SP-888200-140</i>	12A	2.000"	1.625"	1.500"	1.250"	7/8-14	14.00"	10.66"	3.84"	888
<i>SP-611175-140</i>	13	1.750"	1.750"	1.500"	1.250"	1-14	14.00"	10.00"	4.00"	611

- Specify CD for cold roll and HR for hot roll when ordering.
- All spindle part numbers noted above are based on Type W Spindle.
- To add nut, washer and cotter pin to any spindle add "NWC" to the end of the spindle part number.
- Additional spindles manufactured to customer specifications.
- The specifications and dimensions above are for reference only.



PART NUMBER	NO.	DIMENSIONS								FITS HUBS
		A	B	C	D	E	F	G	H	
<i>SP-887248-150</i>	14	2.438"	2.250"	1.625"	1.250"	7/8-14	15.00"	—	—	887, 890
<i>SP-783200-150</i>	15	2.000"	1.875"	1.625"	1.250"	7/8-14	13.00"	8.62"	4.38"	783
<i>SP-803213-155</i>	16	2.125"	2.000"	1.790"	1.375"	7/8-14	15.50"	9.39"	6.11"	778, 803, 813
<i>SP-458225-140</i>	17	2.250"	2.250"	1.780"	1.250"	3/4-16	14.00"	8.98"	5.02"	45-8
<i>SP-778213-155</i>	18	2.125"	2.000"	1.790"	1.375"	7/8-14	15.50"	9.39"	6.11"	778, 803, 813
<i>SP-819275-145</i>	19	2.750"	2.500"	2.000"	1.313"	7/8-14	14.50"	7.99"	6.50"	819, 821
<i>SP-608275-140</i>	20	2.750"	2.750"	2.165"	1.625"	1-14	14.00"	8.53"	5.47"	60-8
<i>SP-758300-160</i>	21	3.000"	3.000"	2.250"	1.625"	1-14	16.00"	9.41"	6.59"	75-8
<i>SP-808300-160</i>	22	3.000"	2.750"	2.165"	1.625"	1-14	16.00"	9.50"	6.50"	80-8
<i>SP-871313-175</i>	23	3.125"	3.000"	2.500"	1.750"	1 1/4-12	17.50"	10.88"	6.63"	871
<i>SP-873338-175</i>	24	3.375"	3.375"	2.750"	1.750"	1 1/4-12	17.50"	10.77"	6.73"	873
<i>SP-873350-175</i>	24A	3.500"	3.375"	2.750"	1.750"	1 1/4-12	17.50"	10.77"	6.73"	873
<i>SP-881450-265</i>	25	4.500"	4.375"	3.540"	2.625"	2-12	26.50"	18.50"	8.00"	881, 882, 981
<i>SP-22542</i>	26	2.250"	2.230"	1.749"	1.249"	1-14	11.00"	6.00"	5.00"	660

- Specify CD for cold roll and HR for hot roll when ordering.
- All spindle part numbers noted above are based on Type W Spindle.
- To add nut, washer and cotter pin to any spindle add "NWC" to the end of the spindle part number.
- Additional spindles manufactured to customer specifications.
- The specifications and dimensions above are for reference only.





# TAPERED ROLLER BEARINGS



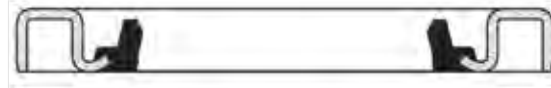
PART NUMBER	DESCRIPTION	CONE ID.	CUP OD.	BOX QTY.	BOX WT.	CASE QTY.	CASE WT.
L-44643	Cone	1.0000"	—	297 pc.	59 lb.	10,692 pc.	2,124 lb.
L-44610	Cup	—	1.9800"	297	27	10,692	972
LM-67048	Cone	1.2500"	—	184	49	6,624	1,764
LM-67010	Cup	—	2.3280"	184	25	6,624	900
25590	Cone	1.7960"	—	60	45	2,160	1,630
25520	Cup	—	3.2650"	55	26	1,980	936
LM-11949	Cone	0.7500"	—	360	65	12,960	2,365
LM-11910	Cup	—	1.7810"	360	36	12,960	1,320
LM-48548	Cone	1.3750"	—	128	53	4,608	1,908
LM-48510	Cup	—	2.5625"	192	38	6,912	1,368
LM-501349	Cone	1.6250"	—	130	60	4,680	2,160
LM-501310	Cup	—	2.8910"	150	39	5,400	1,404
JL-69349	Cone	1.4961"	—	175	53	6,300	1,908
JL-69310	Cup	—	2.4803"	192	32	6,912	1,152
33275	Cone	2.7500"	—	—	—	—	—
33462	Cup	—	4.6250"	—	—	—	—
HM-218248	Cone	3.5423"	—	10 pc.	40	360	1,440
HM-218210	Cup	—	5.7864"	10	20	360	720
HM-212049	Cone	2.6250"	—	14 pc.	45	504	1,620
HM-212011	Cup	—	4.8125"	24	34	864	1,224
LM-29749	Cone	1.5000"	—	120 pc.	42 lb.	4,320 pc.	1,520 lb.
LM-29710	Cup	—	2.5625"	256	44	9,216	1,602
LM-603049	Cone	1.7812"	—	84	46	3,024	1,656
LM-603011	Cup	—	3.0625"	192	50	6,912	1,808
25877	Cone	1.3750"	—	84 pc.	57	3,024	2,052
25821	Cup	—	2.8750"	168	62	6,048	2,232
3780	Cone	2.0000"	—	45 pc.	56	1,620	2,016
3720	Cup	—	3.6718"	96	62	3,456	2,232
2790	Cone	1.3125"	—	84 pc.	59	3,024	2,130
2720	Cup	—	3.0000"	168	69	6,048	2,486
387AS	Cone	2.5000"	—	84 pc.	77	3,024	2,794
382A	Cup	—	3.8125"	144	57	5,184	2,052
39585	Cone	2.5000"	—	14 pc.	28	504	1,008
39520	Cup	—	4.4375"	40	32	1,440	1,152
JLM-506849	Cone	2.1654"	—	84	70	3,024	2,520
JLM-506810	Cup	—	3.5433"	144	59	5,184	2,124
460	Cone	1.7500"	—	pc 32	65	1,152	2,350
453A	Cup	—	4.2500"	72	66	2,592	2,400
14125A	Cone	1.2500"	—	108	40	3,888	1,440
14276	Cup	—	2.7170"	108	19	3,888	684

- Other tapered roller bearings are available upon request.
- The specifications and dimensions above are for reference only.
- \* Non-stock items. Minimum order requirements and longer lead time will apply.





# AG GREASE SEALS



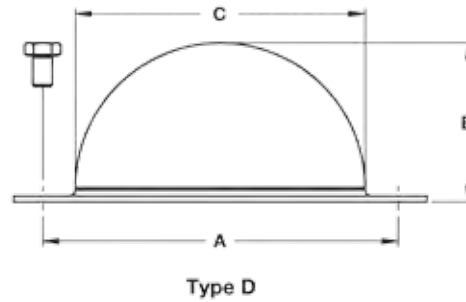
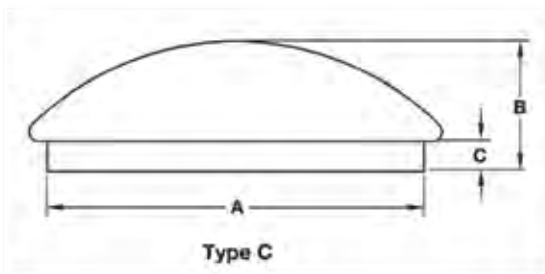
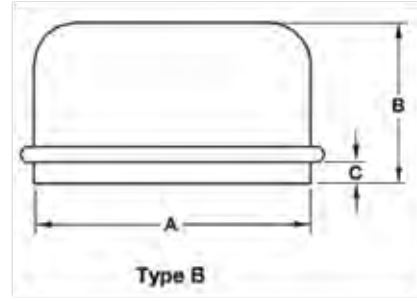
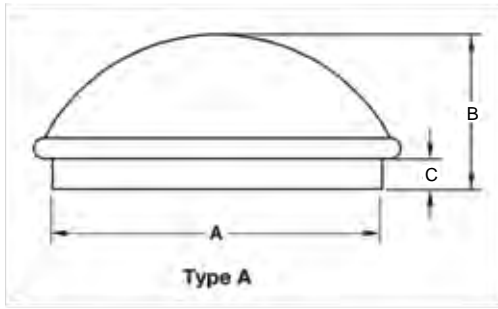
PART NUMBER	SHAFT DIAMETER	BORE DIAMETER	SEAL OD.	SEAL WIDTH	REF. NUMBER	BOX QTY.	BOX WT.
AG-GS-19871250SL	1.250"	1.983"	1.987"	0.250"	12437	300 pc.	16 lb.
AG-GS-23321500SL	1.500"	2.328"	2.332"	0.390"	14975	300	16
AG-GS-26271500DL	1.500"	2.623"	2.627"	0.250"	15190	300	19
AG-GS-23321625SL	1.625"	2.328"	2.332"	0.438"	16069	300	18
AG-GS-25661625SL	1.625"	2.562"	2.566"	0.438"	16289	300	23
AG-GS-27221750SL	1.750"	2.718"	2.722"	0.359"	17617	300	23
AG-GS-30051875SL	1.875"	3.000"	3.005"	0.250"	18823	300	31
AG-GS-30662000SL	2.000"	3.061"	3.066"	0.250"	20044	300	25
AG-GS-36282000SL	2.000"	3.623"	3.628"	0.250"	20148	200	25
AG-GS-30052250SL	2.250"	3.000"	3.005"	0.250"	22368	300	25
AG-GS-30662250SL	2.250"	3.061"	3.066"	0.250"	22392	300	34
AG-GS-37562500SL	2.500"	3.751"	3.756"	0.438"	25091	200	34
AG-GS-37562750SL	2.750"	3.751"	3.756"	0.250"	27394	200	34
AG-GS-40083000SL	3.000"	4.003"	4.008"	0.250"	29968	200	34
AG-GS-45053000SL	3.000"	4.500"	4.505"	0.438"	30087	150	31
AG-GS-46313375SL	3.375"	4.626"	4.631"	0.438"	33772	150	31
AG-GS-60074375SL	4.375"	6.001"	6.007"	0.500"	43771	70	36
AG-GS-2250DL	2.250"	3.371"	3.376"	0.375"	22333TB	300	31

- Material: Rubber = Nitrile Buna - 70 durometer compound.
- The specifications and dimensions above are for reference only.
- \* Non-stock items. Minimum order requirements and longer lead time will apply.

DOUBLE OR TRIPLE LIP  
ARE SPECIAL ORDER



# AG DUST CAPS


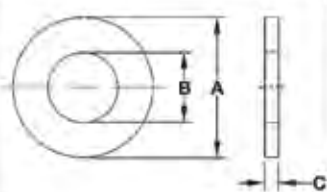


PART NUMBER	HUBS USING DUST CAP	DIMENSIONS			TYPE	BOX QTY.	BOX WT.
		A	B	C			
AG-DC-195Z	12-4, 669, 20-5, 736, 511, 20-6	1.95"	1.38"	0.34"	A	1000 pc.	88 lb.
AG-DC-196ALTZ	633 SAME AS PART AG-DC-2030Z	1.96"	0.95"	0.33"	C	1000	85
*AG-DC-198Z	10-4	1.99"	1.20"	0.37"	B	1000 pc.	80
AG-DC-244Z	25-5, 719, 25-6, 30-6, 35-6, 888, 611, 887, 783, 45-8, 890	2.44"	1.25"	0.31"	A	500	89
AG-DC-275Z	660	2.72"	1.28"	0.33"	C	430	69
AG-DC-313Z	60-8, 75-8, 80-8	3.13"	1.31"	0.31"	C	250	75
AG-DC-315Z	803, 778, 819, 821	3.16"	1.38"	0.30"	C	250	78
*** AG-DC-575Z	871, 873	5.00"	1.75"	3.69"	D	100	195
*** AG-DC-613Z	881, 882, 981	5.75"	2.25"	4.50"	D	100	100


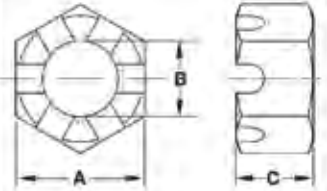
\*\*\*WHEN ORDERING THE COMPLETE ASSEMBLY, THE DUST CAP INCLUDES 4 each AG-FA-DC516 DUST CAP SCREWS  
IF ORDERING AG-DC-575Z OR AG-DC-613Z DOES NOT INCLUDE THE AG-FA-DC516 SCREW, MUST ORDER 4 PER DUST CAP

PART NUMBER	DESCRIPTION
*** AG-FA-DC516	Dust Cap Screw 5/16"-18" x 1/2" Grade 5 (MAY BE USED WITH AG-DC-575Z & AG-DC-613Z)


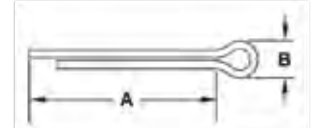
- Material: Zinc coated steel Material thickness 16 gauge, except for **AG-DC-198Z** which is 22 gauge.
- The specifications and dimensions above are for reference only.
- \* Non-stock items. Minimum order quantities and longer lead time will apply.

		<b>FLAT ROUND SPINDLE WASHER</b>						
			DIMENSIONS			BOX QTY.	BOX WT.	
			A	B	C			
			AG-FA-SW0750	1.47"	0.812"	0.134"	1120 pc.	46 lb.
			AG-FA-SW100R	1.67"	1.000"	0.130"	1000	35
			AG-FA-SW0625	1.75"	0.688"	0.134"	650	45
			AG-FA-SW0875	1.75"	0.938"	0.134"	800	53
			AG-FA-SW0750-H	2.00"	0.812"	0.148"	500	46
			AG-FA-SW1000	2.00"	1.062"	0.134"	550	40
			AG-FA-SW0875-2	2.25"	0.875"	0.165"	350	50
			AG-FA-SW1055-H	2.50"	1.055"	0.185"	100	48
			AG-FA-SW1375	3.00"	1.375"	0.165"	100	23
			AG-FA-SW2125	3.75"	2.125"	0.185"	100	59

		<b>SPINDLE NUTS</b>							
			PART NUMBER	THREAD	DIMENSIONS			BOX QTY.	BOX WT.
					A	B	C		
			AG-FA-SN0750	3/4"-16	1.11"	0.75"	0.64"	500 pc.	52 lb.
			AG-FA-SN0875	7/8"-14"	1.29"	0.88"	0.75"	300	47
			AG-FA-SN0625	5/8"-18"	0.93"	0.63"	0.54"	800	44
			AG-FA-SN100R	1"-14"	1.46"	1.00"	0.55"	300	42
			AG-FA-SN1000	1"-14"	1.50"	1.00"	0.83"	200	49
			AG-FA-SN1250	1 1/4"-12"	1.85"	1.25"	1.06"	100	48
			AG-FA-SN2000	2"-12"	2.90"	2.00"	1.25"	25	48

		<b>COTTER PIN</b>						
			PART NUMBER	SIZE	DIMENSIONS		BOX QTY.	BOX WT.
					A	B		
			AG-FA-CP175	5/32"	1.750"	0.31"	1000 pc.	11 lb.
			AG-FA-CP205	7/32"	2.000"	0.44"	250	8
			AG-FA-CP200	1/4"	2.000"	0.50"	1000	16
			AG-FA-CP213	1/8"	2.125"	0.25"	2000	12
			AG-FA-CP350	5/16"	3.500"	0.62"	1000	20

• The specifications and dimensions above are for reference only.



	<p style="text-align: center;"><b>WHEEL BOLTS</b></p> <table border="1"> <thead> <tr> <th>PART NUMBER</th> <th>DESCRIPTION</th> <th>DIMENSIONS</th> </tr> </thead> <tbody> <tr> <td><i>AG-WB1000Z</i></td> <td>Wheel Bolt, Hex Head, 90 Degree</td> <td>1.50" x 1/2" – 20</td> </tr> <tr> <td><i>AG-WB1125Z</i></td> <td>Wheel Bolt, Hex Head, 90 Degree</td> <td>1.63" x 9/16" – 18</td> </tr> <tr> <td><i>AG-WB1250Z</i></td> <td>Wheel Bolt, Hex Head, 90 Degree</td> <td>1.75" x 1/2" – 20</td> </tr> <tr> <td><i>AG-WB1500Z</i></td> <td>Wheel Bolt, Hex Head, 90 Degree</td> <td>1.50" x 9/16" – 18</td> </tr> </tbody> </table>	PART NUMBER	DESCRIPTION	DIMENSIONS	<i>AG-WB1000Z</i>	Wheel Bolt, Hex Head, 90 Degree	1.50" x 1/2" – 20	<i>AG-WB1125Z</i>	Wheel Bolt, Hex Head, 90 Degree	1.63" x 9/16" – 18	<i>AG-WB1250Z</i>	Wheel Bolt, Hex Head, 90 Degree	1.75" x 1/2" – 20	<i>AG-WB1500Z</i>	Wheel Bolt, Hex Head, 90 Degree	1.50" x 9/16" – 18						
PART NUMBER	DESCRIPTION	DIMENSIONS																				
<i>AG-WB1000Z</i>	Wheel Bolt, Hex Head, 90 Degree	1.50" x 1/2" – 20																				
<i>AG-WB1125Z</i>	Wheel Bolt, Hex Head, 90 Degree	1.63" x 9/16" – 18																				
<i>AG-WB1250Z</i>	Wheel Bolt, Hex Head, 90 Degree	1.75" x 1/2" – 20																				
<i>AG-WB1500Z</i>	Wheel Bolt, Hex Head, 90 Degree	1.50" x 9/16" – 18																				
	<p style="text-align: center;"><b>WHEEL STUDS</b></p> <table border="1"> <thead> <tr> <th>PART NUMBER</th> <th>DESCRIPTION</th> <th>DIMENSIONS</th> </tr> </thead> <tbody> <tr> <td><i>AG-WS1625Z</i></td> <td>Wheel Stud, GR8, Zinc</td> <td>2.53" x 5/8" – 18</td> </tr> <tr> <td><i>AG-WS1280Z</i></td> <td>Wheel Stud, GR8, Zinc</td> <td>2.06" x 1/2" – 20</td> </tr> <tr> <td><i>AG-WS1400Z</i></td> <td>Wheel Stud, GR8, Zinc</td> <td>2.46" x 9/16" – 18</td> </tr> <tr> <td><i>AG-WS1813Z</i></td> <td>Wheel Stud, GR8, Zinc</td> <td>1.81" x 3/4" – 16</td> </tr> <tr> <td><i>AG-WS1750Z</i></td> <td>Wheel Stud, GR8, Zinc</td> <td>1.75" x 9/16" – 18</td> </tr> <tr> <td>FA-WS-2310</td> <td>Wheel Stud, GR8, Zinc</td> <td>2.31" x 9/16" – 18</td> </tr> </tbody> </table>	PART NUMBER	DESCRIPTION	DIMENSIONS	<i>AG-WS1625Z</i>	Wheel Stud, GR8, Zinc	2.53" x 5/8" – 18	<i>AG-WS1280Z</i>	Wheel Stud, GR8, Zinc	2.06" x 1/2" – 20	<i>AG-WS1400Z</i>	Wheel Stud, GR8, Zinc	2.46" x 9/16" – 18	<i>AG-WS1813Z</i>	Wheel Stud, GR8, Zinc	1.81" x 3/4" – 16	<i>AG-WS1750Z</i>	Wheel Stud, GR8, Zinc	1.75" x 9/16" – 18	FA-WS-2310	Wheel Stud, GR8, Zinc	2.31" x 9/16" – 18
PART NUMBER	DESCRIPTION	DIMENSIONS																				
<i>AG-WS1625Z</i>	Wheel Stud, GR8, Zinc	2.53" x 5/8" – 18																				
<i>AG-WS1280Z</i>	Wheel Stud, GR8, Zinc	2.06" x 1/2" – 20																				
<i>AG-WS1400Z</i>	Wheel Stud, GR8, Zinc	2.46" x 9/16" – 18																				
<i>AG-WS1813Z</i>	Wheel Stud, GR8, Zinc	1.81" x 3/4" – 16																				
<i>AG-WS1750Z</i>	Wheel Stud, GR8, Zinc	1.75" x 9/16" – 18																				
FA-WS-2310	Wheel Stud, GR8, Zinc	2.31" x 9/16" – 18																				
	<p style="text-align: center;"><b>WHEEL NUTS</b></p> <table border="1"> <thead> <tr> <th>PART NUMBER</th> <th>DESCRIPTION</th> <th>DIMENSIONS</th> </tr> </thead> <tbody> <tr> <td><i>*AG-WNF5818Z</i></td> <td>Wheel Nut, Flanged GR5, Zinc</td> <td>5/8" – 16</td> </tr> <tr> <td><i>AG-WN1220Z</i></td> <td>Wheel Nut, 90 Degrees, GR5, Zinc</td> <td>1/2" – 20</td> </tr> <tr> <td><i>AG-WN91618Z</i></td> <td>Wheel Nut, 90 Degrees, GR5, Zinc</td> <td>9/16" – 18</td> </tr> <tr> <td>FA-6-109</td> <td>Wheel Nut, 90 Degrees, GR5, Zinc</td> <td>5/8" – 16</td> </tr> </tbody> </table>	PART NUMBER	DESCRIPTION	DIMENSIONS	<i>*AG-WNF5818Z</i>	Wheel Nut, Flanged GR5, Zinc	5/8" – 16	<i>AG-WN1220Z</i>	Wheel Nut, 90 Degrees, GR5, Zinc	1/2" – 20	<i>AG-WN91618Z</i>	Wheel Nut, 90 Degrees, GR5, Zinc	9/16" – 18	FA-6-109	Wheel Nut, 90 Degrees, GR5, Zinc	5/8" – 16						
PART NUMBER	DESCRIPTION	DIMENSIONS																				
<i>*AG-WNF5818Z</i>	Wheel Nut, Flanged GR5, Zinc	5/8" – 16																				
<i>AG-WN1220Z</i>	Wheel Nut, 90 Degrees, GR5, Zinc	1/2" – 20																				
<i>AG-WN91618Z</i>	Wheel Nut, 90 Degrees, GR5, Zinc	9/16" – 18																				
FA-6-109	Wheel Nut, 90 Degrees, GR5, Zinc	5/8" – 16																				
	<p style="text-align: center;"><b>U-BOLTS</b></p> <p>Custom <b>U-Bolts</b> are available upon request. Contact your GVS Sales Representative with dimensions <b>A</b>, <b>B</b> and <b>C</b>. Specify <b>course</b> or <b>fine</b> thread size, plain, white zinc or yellow zinc.</p>																					

• The specifications and dimensions above are for reference only.  
 \* Non-stock items. Minimum order requirements and longer lead time will apply.



**GENERATOR SHAFTS**



**KINGPINS**



**PLANTER CLEVIS**



**BENT SPINDLES**



**FORGED TORSION  
ARMS**



**FORGED BRAKE  
SPIDERS**



**SPECIALTY SHAFT**



**SUSPENSION BLOCKS**



**SLIDE-OUT CLEVIS**



**DAMPENING  
FLANGE**



**STAINLESS  
STEEL VALVE**



**PULLEY SHAFT**



**COG**



**ELECTRICAL SOCKET**



**INNER BAR**



**DE EQUALIZER  
MACHINED**



**HINGE FOR X-RAY  
LAB**



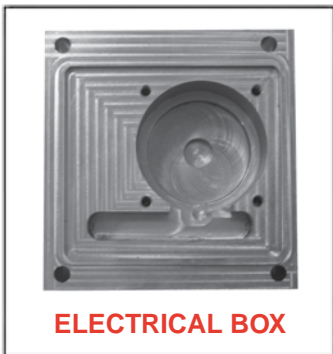
**OVEN LIGHT TORQUE  
SOCKET**



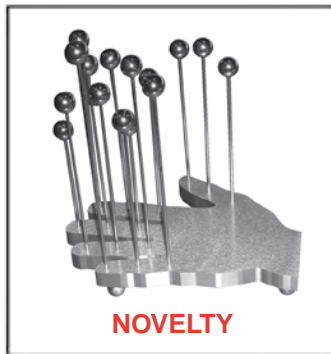
**DOME FOR TRAIN BELL**



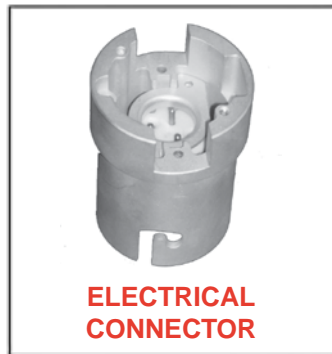
**MILITARY**



**ELECTRICAL BOX**



**NOVELTY**



**ELECTRICAL  
CONNECTOR**



**MOLD PLATE**





# TRP DISTRIBUTION – HIGH SPEED PRODUCTS

## AXLE & SUSPENSION COMPONENTS



**TruRyde®**

HIGH SPEED AVAILABLE UPON REQUEST



**TERMS:**

All orders are subject to credit approval by our credit department. Net 30 days from date of shipment, unless specified otherwise in writing by TRP International. All past due accounts shall accrue interest at a rate of 1.5% per month based upon the outstanding balance at the end of the month plus any additional fees incurred in the collection process, including attorney fees.

**PRICES:**

All shipments will be at the prices in effect at order acceptance, including any possible raw material surcharges that may be implemented. Prices and specifications are subject to change without notice. Minimum order of \$100.00 is required. Any order less than \$100.00 will be subject to a \$25.00 handling charge.

**ORDERS:**

TRP International's acceptance of customer orders, whether verbal or written does not include an acknowledgment or acceptance on behalf of TRP of any terms or conditions of customers purchase order, whether stated expressly or implied.

**CANCELLATION AND CHANGES:**

Due to immediate production of manufactured products, orders containing these items are considered firm and are not subject to cancellation or change without approval. Any approved cancellations or changes are subject to additional charges at TRP International's discretion.

**FREIGHT:**

All shipments are F.O.B. TRP International and are shipped "Freight Collect" unless specified otherwise in writing by TRP. Products are carefully inspected and packed to assure that they will arrive in good condition. In case of shortage or damage, purchaser should promptly file a claim with the delivering carrier. TRP is not liable for damage or loss of merchandise after it has left our facilities, we will however assist you in filing a claim.

**RETURNS:**

Return requests must be made within 30 days of shipment. Return authorization is required before the items are returned for any reason. We will consider issuing a return authorization for the following reasons; manufacturing defect, order processing error, shipping error, mismarked cartons, or duplicated shipments. Returns for any other reason, and no fault of TRP, are subject to a 20% restocking charge and when authorized, must be returned freight prepaid. Return merchandise will be subject to inspection. Any discrepancies, additional damage, signs of use, or missing parts will result in an adjustment to the amount of credit issued.

**LIMITED WARRANTY:**

The products listed in this catalog are warranted by the manufacturers to be free from defects in materials and workmanship for a period of one year from the date of original purchase. This warranty is in lieu of all other warranties expressed or implied. This warranty covers normal use and application and does not cover damage or defect which results from alteration, accident, neglect, improper installation, operation or maintenance.

TRP International's obligation under this warranty is limited to the repair or replacement of the defective part, and in no event shall TRP be liable for reimbursement of consequential, indirect or incidental damages of any kind.

## **CORPORATE OFFICE**

### **TRP Corporate**

22420 Challenger Drive  
Elkhart, IN 46514  
Phone: 574.970.1680  
Fax: 574.970.1681  
Email: [trpintl@trpintl.com](mailto:trpintl@trpintl.com)  
[www.trpintl.com](http://www.trpintl.com)

## **TRP LIAISON OFFICES**

### **TRP CHINA**

Hefei, China

### **TRP ITALY**

Erba, Italy

## **TRP DISTRIBUTION CENTERS**

### **Indiana**

22420 Challenger Drive  
Elkhart, IN 46514  
Phone: 574.389.9941  
Fax: 574.389.9944  
[www.trpintl.com](http://www.trpintl.com)

### **Texas**

324 S. Town East Blvd.  
Mesquite, TX 75149  
Phone: 972.279.9863  
Fax: 972.279.9864  
[www.trpintl.com](http://www.trpintl.com)



## **AGRICULTURAL DIVISION**

22420 Challenger Drive  
Elkhart, Indiana 46514 U.S.A.  
Phone 574.293.0974 Fax 574.293.0551

[www.trpintl.com](http://www.trpintl.com)

