



Advanced Simulation Technology inc.
500 A Huntmar Park Drive
Herndon, Virginia 20170 U.S.A.
Tel. (703)471-2104 • Fax. (703)471-2108
www.asti-usa.com

ASTi

Telestra 4

Quick Start Guide

Document: DOC-01-TEL4-QSG-1

Product Name: Telestra 4 Target and ACE Studio

ASTi Telestra 4 Quick Start Guide

© Copyright ASTi 2011. ASTi documents are continuously updated, see www.asti-usa.com/support/document.

Restricted Rights: Use, duplication, or disclosure by the Government is subject to restrictions as set forth in subparagraph (c)(1)(ii) of the Rights in Technical Data and Computer Software clause at DFARS 252.227-7013.

This material may be reproduced by or for the U.S. Government pursuant to the copyright license under the clause at DFARS 252.227-7013 (1994).

ASTi

500-A Huntmar Park Drive

Herndon, VA 20170

Table of Contents

- 1.0. Purpose 1**
 - 1.1. Top Level Hardware Layout 1**
 - 1.2. Target Ethernet Port Connections 2**
 - 1.3. Studio and Target Networking 3**
 - 1.3.1. Basic Requirements 3
 - 1.3.2. Basic Network Debugging 5
- 2.0. Setting up the ACE Studio Development Workstation 6**
- 3.0. Setting up the Telestra 4 Target 8**
- 4.0. Setting up the Audio Distribution Hardware 11**
- 5.0. Setting up the ACENet 13**
- 6.0. Starting a New Project 14**

1.0. Purpose

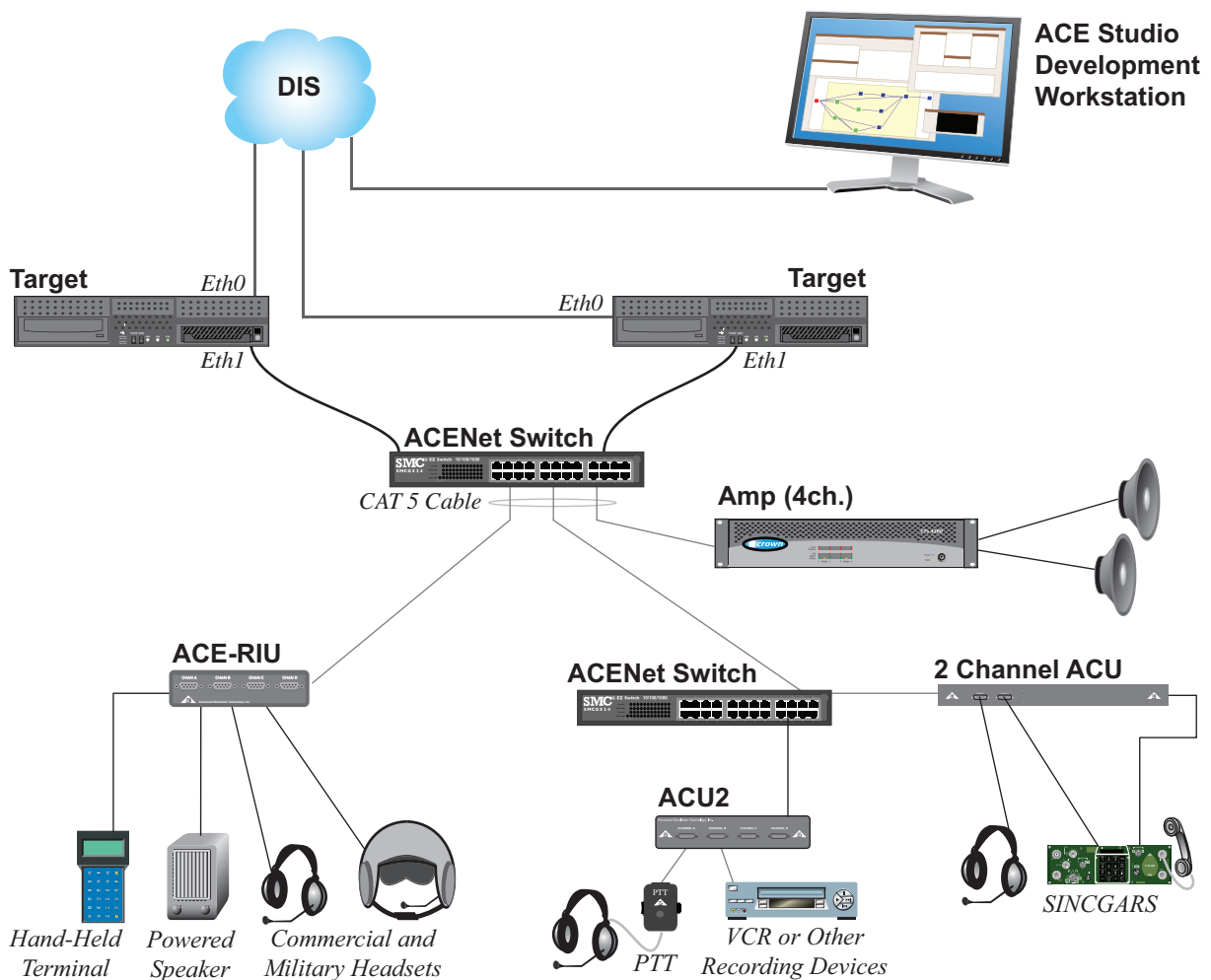
The purpose of the Telestra 4 Quick Start Guide is to instruct new users from unpacking their Telestra 4 equipment, to setup, to selecting and starting a new project.

Note: This document is a high-level “quick start” to using ASTi’s Telestra 4 equipment. Please refer to each product’s individual guide for a comprehensive understanding of the equipment.

For essential Telestra 4 documentation, please see ASTi’s web site:

<http://www.asti-usa.com/support/document/telestra4.html>

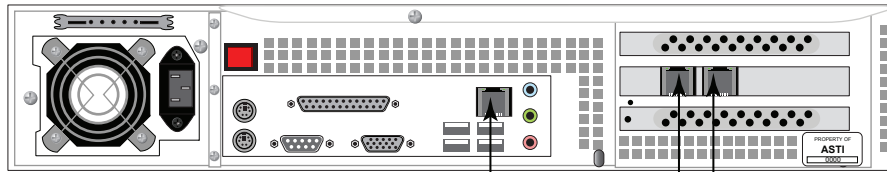
1.1. Top Level Hardware Layout



Please note not all hardware configurations are the same. The system setup will vary with customer applications.

1.2. Target Ethernet Port Connections

Port	Connection
eth0	ASTiNet (network with Development Workstation)
eth1	ACENet (network with ACENet devices)
eth2	Host Connection



Network Ports

*See chassis labels for ethernet assignment
Ethernet labels will be **Eth0**, **Eth1**, and **Eth2***

Please read the Ethernet labels on your system to verify Ethernet locations.

For more information on the Ethernet Network Ports please see Chapter 3: System Installation - Network Ports in the Target Operation and Maintenance Manual (DOC-01-TEL4-TUG-1).

1.3. Studio and Target Networking

1.3.1. Basic Requirements

When setting up the Target and Studio network configuration there are several requirements to keep in mind in order for the Target and Studio to communicate over the network.

The following requirements are for the Studio and Target when they have the same subnet.

Target Networking Requirements

- Set basic IPv4 settings including valid IP address, netmask and gateway. If the network does not have a gateway enter the IP address in the gateway field. See section “3.0. Setting up the Telestra 4 Target” for step-by-step instructions.
- Set a valid unique hostname. This is set in RMS Configuration > Networking.
- Multiple Ethernet interfaces cannot be on the same subnet.
- Verify that there is a valid IPv6 link-local address. To view the IPv6 address in RMS navigate to the Configuration > Networking Devices page.

Studio Networking Requirements

- Set basic IPv4 settings including valid IP address, netmask and gateway. See section “2.0. Setting up the ACE Studio Development Workstation” for step-by-step instructions.
- Multiple Ethernet interfaces cannot be on the same subnet.
- Verify that there is a valid IPv6 link-local address. To verify this type the following in a Studio terminal:

```
ifconfig
```

Studio Running on a Virtual Machine

- Set up the networking for the Host OS and the Guest OS.
- Do not use NAT mode. NAT mode is not supported by ASTi.

Target and Studio on Different Subnets

The following instructions are for Studio and Target when they have different subnets or when the Studio is connected over a WAN. In Studio, the Project will not populate in the list automatically, you must follow the instructions below to open a Project. To open a Project in Studio, you must know the Project name and Target name or use the RMS Project Management page to find the URL.

1. In Project Manager under the Project menu select “Open URL...”
2. You are prompted to “Enter Project URL”.
3. Studio is expecting a URL in the following format:

`https://x.x.x.x/projects/<ProjectName>`

where `x.x.x.x` is the IP address. Do not use `hostname.local`.

4. In addition to typing in the URL, the links can also be copied from the Project Management section under RMS. You can copy the URL by right clicking on the Project links (don't forget to add the 'https://').

1.3.2. Basic Network Debugging

If possible, disable your firewall for debugging purposes.

Log into your Studio and open a terminal.

1. Try to ping the Target. Allow ping to run for a full 30 seconds to make sure there isn't an intermittent networking problem. Type the following:

```
ping x.x.x.x
```

where `x.x.x.x` is the IP address.

2. Then type:

```
ping hostname.local
```

If this doesn't work, there is something wrong with your basic IPv4 settings. Check your IPv4 settings. This also verifies that Avahi mDNS is running on the Target.

3. You can also verify mDNS by typing the following in a terminal:

```
netstat -gn
```

You should see “224.0.0.251” and the following string:

```
ff18:6e87:5466:0016:cba9:773f:4571:aced
```

Both of these need to appear on the interface (i.e. Eth0) you are using.

4. Type the following command:

```
ping6 -I <interface> ff18:6e87:5466:0016:cba9:773f:4571:aced
```

where `<interface>` is your interface i.e. eth0. This checks to see if Studio can see Target's ANZAC information.

Log into your Target from a terminal and repeat the debugging steps above.

2.0. Setting up the ACE Studio Development Workstation

To complete the set up you will need the following hardware:

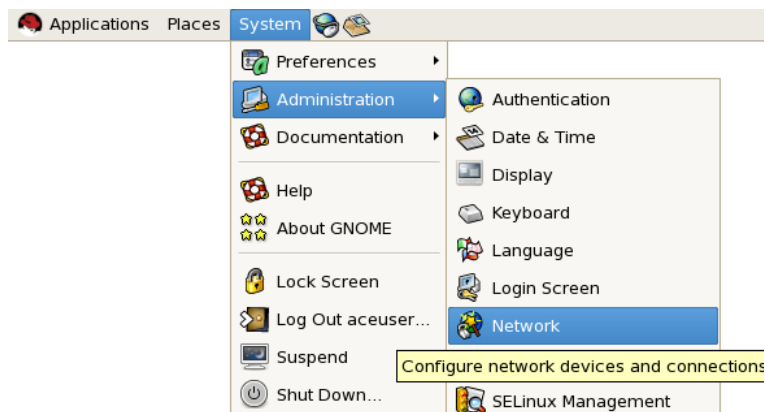
- monitor
- keyboard
- mouse
- power supply (if using a small footprint computer system)
- ACE Studio Development Workstation
- Category 5e cable or better
- Network connection from ACE Studio to Target

Follow the steps below to setup the ACE Studio Development Workstation and assign an IP address to the system. The ACE Studio Development Workstation will not have an IP address without a DHCP network connection.

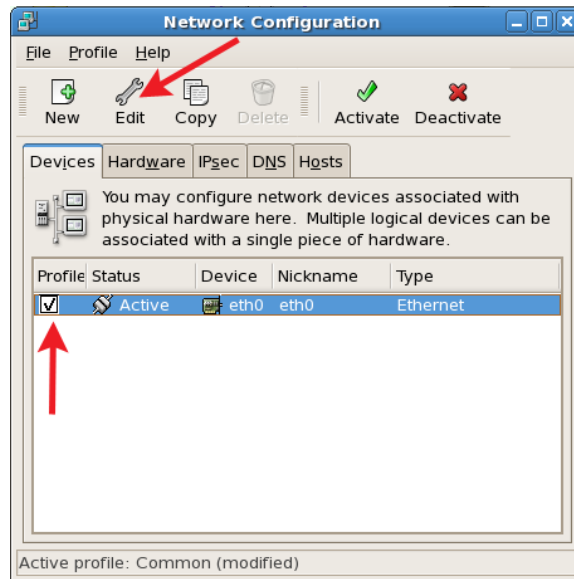
1. Connect the monitor, keyboard, mouse, and power supply to the development workstation.
2. Connect the development workstation to the same network as the Target.
3. Power on the development workstation and allow it to boot.

The development workstation will not have an IP address without a DHCP network connection.

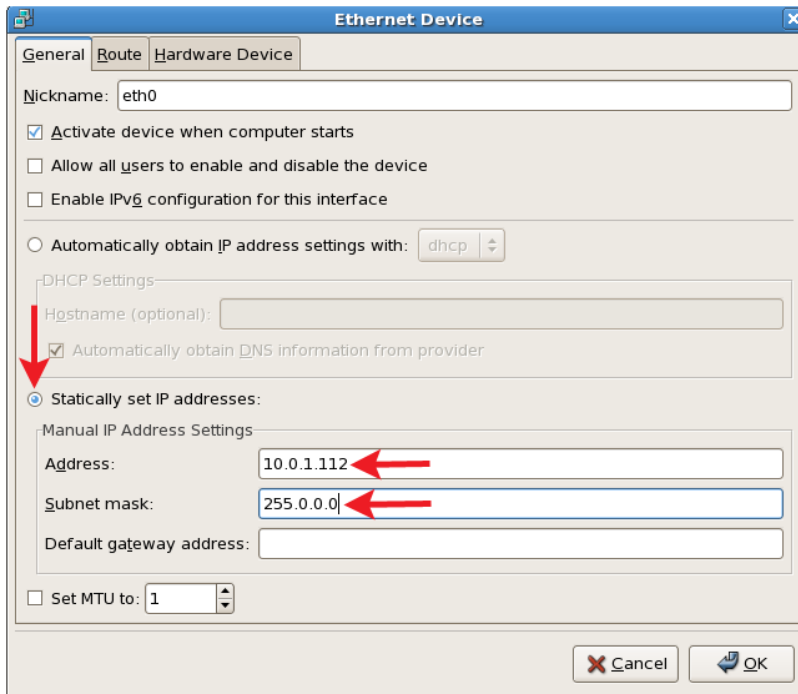
4. In the top left corner select **System > Administration > Network**.



5. Check the **‘Profile’** box and then select **‘Edit.’**



6. Select the **‘Statically set IP addresses’** button.
7. Enter the IP address and Subnet mask.



Ask your network administrator for valid IP addresses and subnet masks for the network(s) where the Target and ACE Studio Development Workstation will be integrated.

8. Enter the default gateway. If the network does not have a gateway, enter the IP address in this field.
9. Reboot the Studio platform.

3.0. Setting up the Telestra 4 Target

To complete the set up you will need the following hardware:

- monitor
- keyboard
- ACE Studio Development Workstation
- Category 5e cable or better
- Target

Follow the steps below to setup the Target and assign an IP address.

1. Connect the monitor and keyboard to the Target.
2. Using a Category 5e cable, connect the Target to the ASTiNet/DIS network using **Eth0**. See “Top Level Hardware Layout” on page 1.
3. Power on the Target and allow it to boot.
4. Login with the following:

```
Username: root Password: abcd1234
```

5. The Target will not have an IP address without a DHCP network connection. To set an IP address, type:

```
ace-net-config -a xxx.xxx.xxx.xxx -n yyy.yyy.yyy.yyy
```

where ‘x.x.x.x’ is the IP address and ‘y.y.y.y’ is the subnet mask.

This sets the IP address and netmask for **Eth0** which is used to access the Remote Management System (RMS) via a web browser.

6. *Optional:* For more network setup options type:

```
ace-net-config -h
```

7. Once you have configured Eth0, you can use RMS to make additional changes to the network settings.
8. On the development workstation or any computer on the network with a web browser, open a browser and in the address bar type in the IP address to open the Remote Management System (RMS).

Note: Depending on your web browser and browser version, the browser may show a failed connection due to a self signed security certificate. Bypass the warning by following the prompts to add a security exception.

- In RMS, navigate to the **Configuration > Network Devices** page to set the remaining network interfaces.

To access the network interfaces you are required to log in to RMS. Enter the default username and password.

Username: **admin** Password: **astirules**

ASTi Remote Management System
Current System: training-telestra4 [Login](#)

training-telestra4 System Networking

Interface	IP Address	Mode	Subnet Mask
Interface eth0	10.2.131.125	fixed	255.255.0.0
Interface eth1	192.168.177.253	fixed	255.255.255.0
Interface eth2	20.1.1.1	fixed	255.0.0.0

General Networking
 Default Route: eth0
 Domain: asti-usa.com
 Gateway IP: 10.2.0.254
 Hostname: see-target
 Nameserver: 10.1.1.1

Time Server
[Edit NTP Config.](#)

Network Tools
Ping Utility
 Enter IP address:

ASTi · support@asti-usa.com · www.asti-usa.com 13:54:59 up 2:46

IP Address
 (e.g. 192.168.10.10)

Mode

Subnet Mask
 (e.g. 255.255.255.0)

10. Navigate to the **Configuration > Networking** page and verify the following is set for your system networking:

Default Route

Gateway IP

Domain (optional, leave blank if none)

Hostname

Nameserver (optional, leave blank if none)

11. Navigate to the '**System Actions**' page (System > Reset/Power) and select '**System Reboot.**' The reboot process will take approximately 2 minutes, select the '**Reboot Telestra System Now**' button.



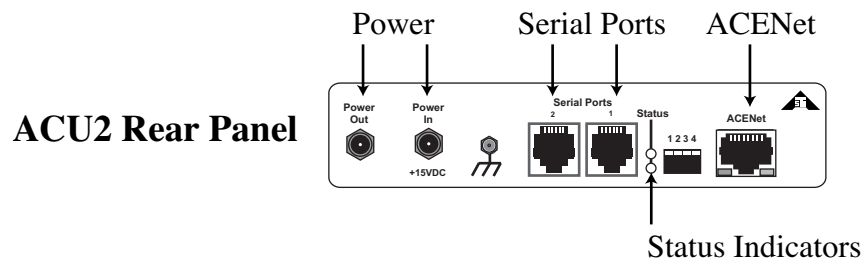
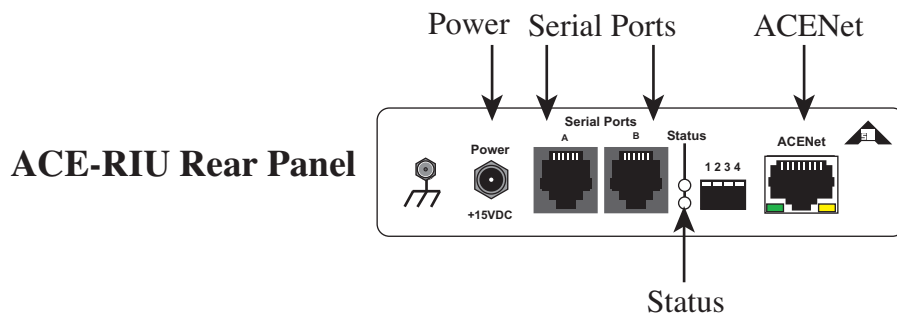
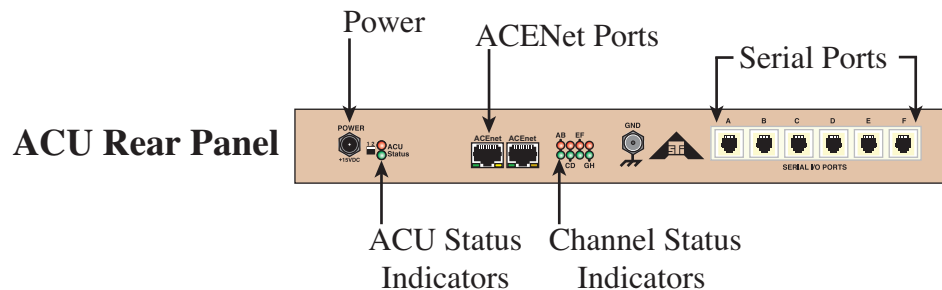
4.0. Setting up the Audio Distribution Hardware

To complete the set up you will need the following hardware:

- ACU2, ACU, or ACE-RIU
- Power supply
- ACE Studio Development Workstation
- Category 5e cable or better
- ACENet switch

Follow the steps below to set up the ACENet audio distribution device.

1. Using a Category 5 cable connect the ACENet switch to the Ethernet port on the device.
Note there are two Ethernet ports on the ACU, select either one.



2. Power on the device.
3. Using a Category 5 cable connect the ACENet switch to **eth1** on the Target. See Top Level Hardware Layout on page 1.

- On the development station or a computer on the network with a web browser, open the browser and in the address bar type the IP address of **eth0** on the Target into the browser.

Note: Depending on your web browser and browser version, the browser may show a failed connection due to a self signed security certificate. Bypass the warning by following the prompts to add a security exception.

- The main RMS page will open in the browser.
- Select **Network > ACUs, ACU2s, or ACE-RIU** and the device(s) connected to the ACENet switch should appear on the main device(s) page, as shown below.

ASTi Remote Management System

Current System: training-telestra4 Logged in as admin · [Manage Users](#) · [Logout](#)

training-telestra4 ACU List

[Update ACU Firmware](#)

Device Name	In Layout	F/W Version	Status	Message
ACU_02:F1:AF	☑	1.14	✓	OK, MAC=00:60:2b:02:f1:af
ACU_02:F1:B4	☑	1.14	✓	OK, MAC=00:60:2b:02:f1:b4
ACU_02:FE:86	☑	1.14	✓	OK, MAC=00:60:2b:02:fe:86
ACU_02:FE:8B	☑	1.14	✓	OK, MAC=00:60:2b:02:fe:8b
ACU_02:FE:92	☑	1.14	✓	OK, MAC=00:60:2b:02:fe:92
ACU_02:FF:75	☑	1.14	✓	OK, MAC=00:60:2b:02:ff:75
ACU_02:FF:B4	☑	1.14	✓	OK, MAC=00:60:2b:02:ff:b4
ACU_02:FF:C3	❌	1.14	✗	Unknown error
ACU_02:FF:DA	☑	1.14	✓	OK, MAC=00:60:2b:02:ff:da
ACU_02:FF:EF	☑	1.14	✓	OK, MAC=00:60:2b:02:ff:ef

10:46:14 up 19:16

ASTI · support@asti-usa.com · www.asti-usa.com

5.0. Setting up the ACENet

The ACENet infrastructure requires a closed network with only Telestra 4 equipment connected including Targets, audio distribution devices and ACENet compatible equipment. All ACENet switches must be gigabit capable and all cabling connections must be Category 5e grade or better.

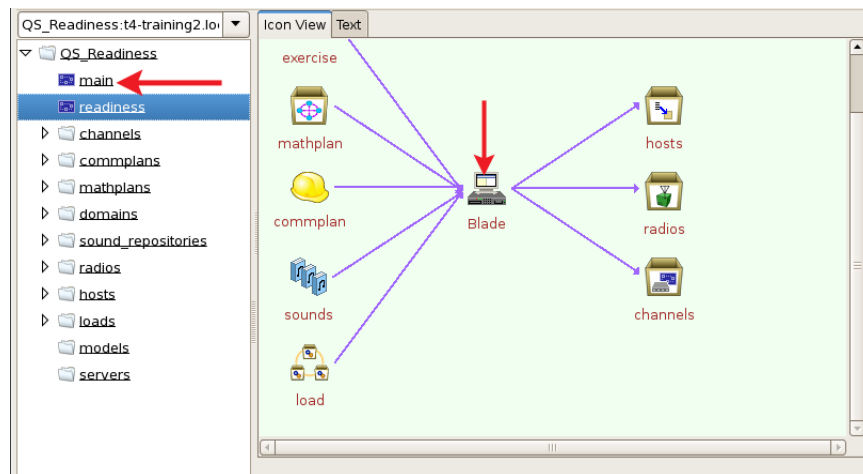
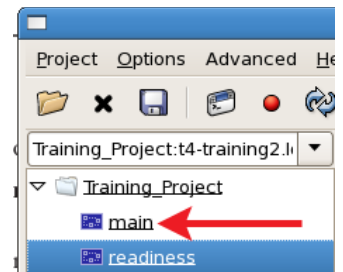
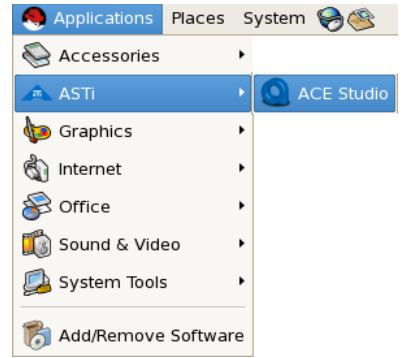
Please refer to the Top Level Hardware Layout for an ACENet setup example with peripherals.

Please refer to the ACENet User Guide (DOC-01-TELS4-AN-UG-1) for complete requirements, recommended switches, and frequently asked questions.

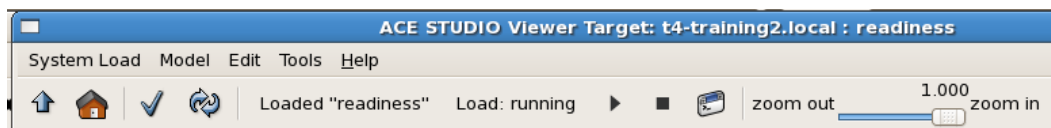
6.0. Starting a New Project

Follow the steps below to start a new Project on the ACE Studio Development Workstation.

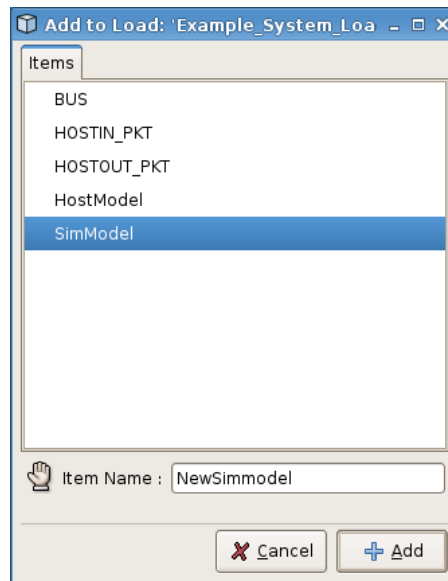
1. On the development workstation, select ‘**Applications**’ from the top left tool bar.
2. Select ‘**ASTi**’ and then select ‘**ACE Studio.**’ The Project Manager will open.
3. In the top left tool bar select **Project > Open**.
4. Open the Project dialogue box, select your local Target’s name, and press the ‘+’ symbol to add a new Project.
5. ACE Studio Project Manager opens and on the left side of the screen is the new Project and below that is ‘**Main.**’
6. Click ‘**Main**’ to open the graphical view of the Project, as shown below.



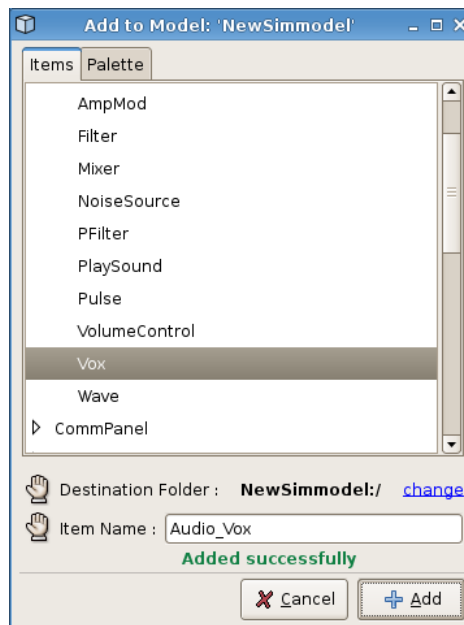
7. Select the install layout icon.
8. Right-click on the Target icon and select ‘**Open,**’ this will open ACE Studio Load Viewer.



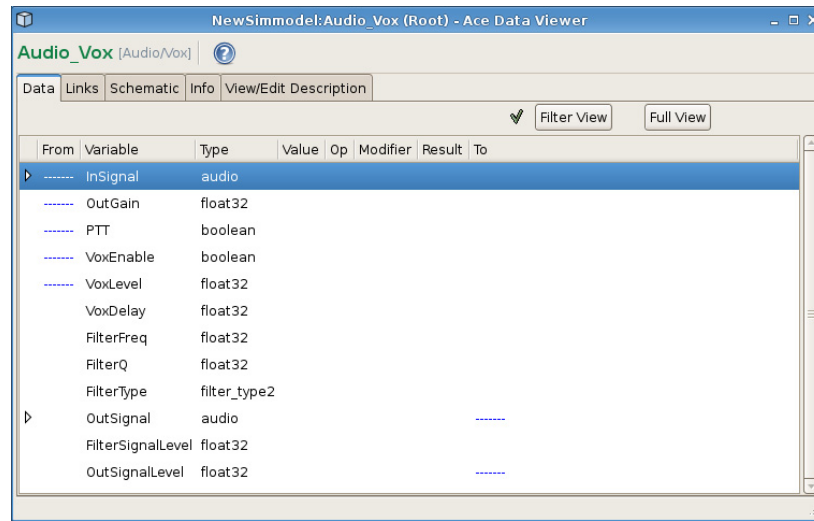
9. Right-click in the window titled 'Main' and add SimModel (for example). After selecting an item, the screen will display 'Added Successfully.' Then select 'cancel' to close the window.



10. Double-click on the Sim Model icon inserted in the previous step. In the **External Connections Box**, right-click and select 'Add,' to pick an item such as Audio > Vox. This will add the audio_vox component to the model.



11. At the top right, the `audio_vox` component is listed under components. Click **'view'** and a screen with the variables for the Vox object will appear.



After becoming familiar with ACE Studio software, the user can continue to add objects and create models to meet their requirements¹.

¹ASTi recommends a three-day training course which includes intensive hardware and software familiarization, and Model Building assistance oriented to the customer's application.

Please see the ACE Studio User Guide (DOC-01-TELAS-UG-4) to test the setup with the ACE Readiness Test. The Readiness Test is a simple model available on the system to test each channel of the audio distribution devices. The Readiness Test is also useful when troubleshooting.