

WIFI TRAIL CAMERA

WIFI810



USER MANUAL



1080P full
hd

0.3s

Fast trigger
time

120°

Detection angle



Rugged
waterproof

SPECIFICATIONS

Photo recording

Photo resolution	20MP /16 MP /12MP
File format	.JPG
Time lapse mode	5min / 10min / 30min / 60min
Multi-shot mode	Up to 9 photos per detection
Stamp (photos and video)	Date, time, temperature (°C/°F) and moon phase
Capture mode	Camera/Video/Camera&video/Time lapse

Video recording

Video resolution	1080p / 720p / WVGA(480p)
File format	.MP4 / H.264
Video length	10 s / 30s / 60s / 90 s

Capture mode	Colorful mode at daytime, black and white mode at night
--------------	--

WiFi

App Connection	App ID: WiFi Camera SUN (iOS and Android Devices)
Remote Control	WiFi On / Off

Memory storage

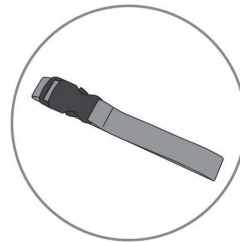
Support	•Internal memory: none •External memory : Micro SD card (up to 64GB)
---------	--

PACKING INCLUDES



◀ Camera

Manual ▶



◀ Mounting Strap

USB Cable ▶



Viewing

Built-in screen	TFT 2.0"
-----------------	----------

Power source

Alkaline Battery	4xAA or 8xAA
Lithium Battery	Rechargeable lithium AA battery
External Power Jack	DC 6~12V 1A (3.5X1.3mm)

Detection system

Motion Sensor	3xPIR
Detection Angle	120°
Detection Range	Adjustable from 1 to 20 meters
Trigger Speed	0.3 second
Delay between each detection	1/5/10/30 seconds, 1/5/10/30 minutes

Night time illumination system

Infra LEDs	44pcs LEDs
Flash Range	< 20 meters
Exposure	Auto / 100 / 200 / 400

Optical field of view

120°

Dimensions

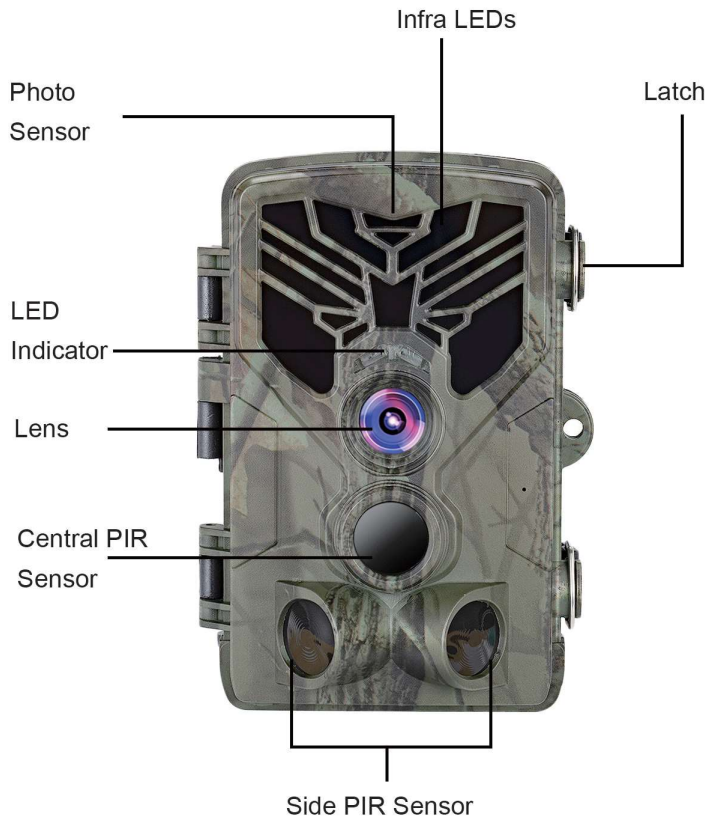
135mm X 90mm X 76mm

Recommendations

Operating temperature	(-20 °C to +70 °C) (-4 °F to +158 °F)
-----------------------	---------------------------------------

waterproof level

IP 65



04



05

INSTALLING BATTERIES



IF USING AA - ALKALINE BATTERIES

1. Pull the gap lightly and open battery compartment.
2. Reference the battery icons located on the inside of the battery compartment. Insert the batteries according to the positive and negative battery icons.
3. Close the battery compartment to resist water and dust.

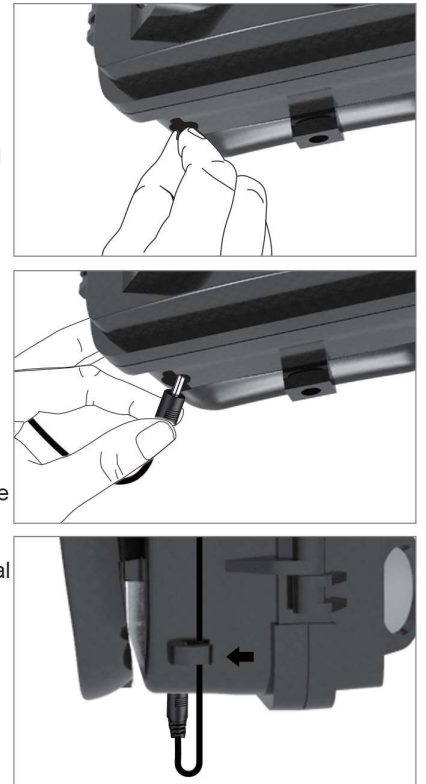
NOTE: Installing any of the 8-AA batteries in the wrong direction may cause the batteries to leak acid and could possibly explode, causing camera failure and damage to the battery compartment.

06

BATTERIES CONT.....

IF USING 6V DC POWER SOURCE

1. Remove the rubber port cap at the bottom of the camera. Using a universal 6V DC cord, plug in to the bottom port option.
2. Run the cord to the side of the camera where there is a hook provided behind the hinge of the camera door. This will support the power cord and take pressure off of the connection point.
3. When not in use, replace the rubber port cap at the bottom of the camera to protect the 6V DC universal plug-in port.

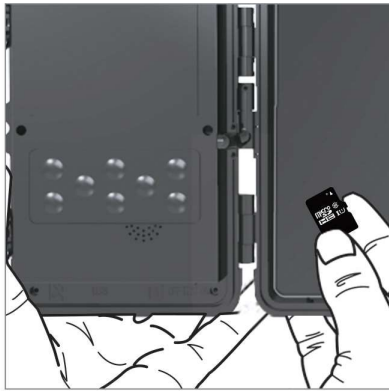


07

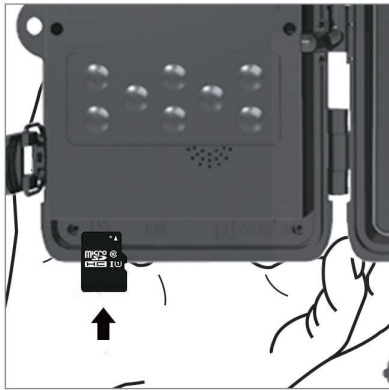
MEMORY CARD INSTALL

INSTALL MICRO-SD CARD

1. Insert the Micro SD card with the contacts facing away. The Micro SD card should slide in freely with little resistance. Continue pressing the card inward until you hear a click. This means the Micro SD card is locked in place and ready for use.



2. To remove Micro SD card, press the card inwards to release.

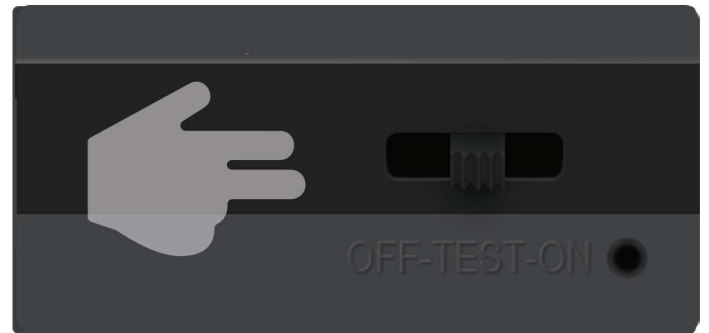


08

QUICK START

Enter to TEST mode

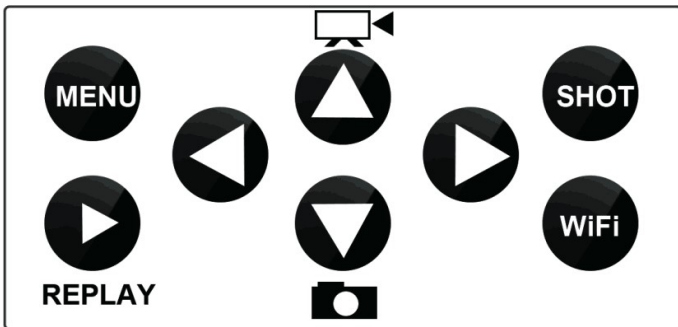
Slide the mode switch from OFF to TEST position to activate the camera and view the user setup screen.



There is a control panel with 8 keys when you open the camera.

09

OPERATING BUTTONS



MENU: Open the Settings menu using the MENU button

REPLAY: Press this button to start the replay mode

: Change to the manual recording mode for video recordings

: Change to the manual recording mode for taking photos

SHOT: Manually take a video or photo depending on the set recording mode. Video recordings are ended by pressing the SHOT button

WiFi : Press it to start WiFi , press it again to stop

10

Wi-Fi Setting

3 Steps to use your Wi-Fi Trail Camera

1. Connect the remote control to camera.

There is a small remote control key in the box, which is used to turn on / turn off camera's Wi-Fi.



1). Move the power switch to "TEST" to turn on the camera, press the camera's Wi-Fi switch, there will be red flash.



11

2). press "ON" of remote control key, its red light and camera's red light go out at the same time, that means the remote control key has connected to your camera successfully.



2.) In your camera's WLAN, you will find this SSID

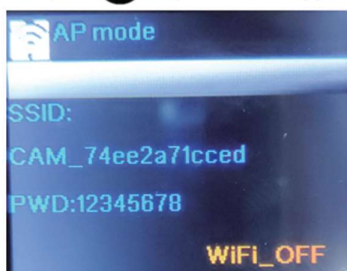


2. Connect the camera to App

You can search Denver... to download App from Google play and Apple Store.

3.) Fill in the password 12345678, then Wi-Fi connected

1.) On "TEST" mode, press **WiFi** to open camera's App mode.



12



13

4.) press **WiFi** to return to system menu, then move power switch to ON model.

3.) open your App, you can preview and download the pictures and videos from camera memory card.

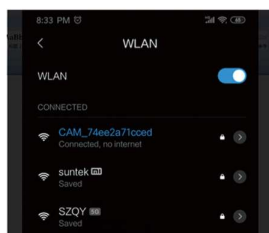
3. Open the App to preview and download pictures.

1).press "ON" of remote control, there will be blue flash, it means camera's App has turned on,



4.) press OFF of remote control to Turn off camera's Wi-Fi

2.) In your camera's WLAN, you will find this SSID , add this hot point .



14



15



Setup	Sub menu	Description
Mode	Camera, video, camera& video, Timelapse	Taking picture, video, picture and video, taking picture regular
Resolution	1080P, 720P, WVGA(480P)	Video Resolution
Video Length	10/30/60/90 Seconds	Each Video max 90 sec, default 10sec
Record Audio	Off, On	Video With Sound

16

Setup	Sub Menu	Description
Image Size	20MP/16MP/12MP	Image resolution
Interval	1/5/10/30sec, 1/5/10/30Min	Max 30 minutes delay
Time Lapse	5/10/30/60 minutes	Take pic every 5min
Sequence	1/3/6/9 pictures	Max 9 pics one shot
IOS	Auto/100/200/400	Exposure level
PIR Sensitivity	High/Medium/Low	Adjust PIR sensitivity
Language	UK/FR/ES/RU/POR/IT/DE	7 languages
Frequency	50Hz /60Hz	Screen refresh rate
Camera ID	CAM000	6 numbers or letters
Password	Off /On	4 numbers
Working Timer	00:00:00 to 23:59:59	N/L
Date /Time	DD/MM/YY	N/L
Format	Cancel / OK	Format memory card
Default Setting	Cancel / OK	Back to default
Version	V2.0	Firmware Version

17

WARRANTY

With great pride and full confidence in products, we always keep our words which are given to our customers as specified warranty terms and services below. Based on a strict QC system, we initially offer all our customers one-year long time limited warranty.

Our products are warranted against defects in materials and workmanship for a period of one year from the date of original purchase. If a defect exists, we will, at our option and to extent permitted by law will

- (1) repair the product at no charge using new or refurbished parts;
- (2) exchange the product with a functionally equivalent product that is new or refurbished.

This warranty excludes damage from abuse, accident, modifications or others that are not defects in materials and workmanship. This warranty only covers failures due to defects in materials or workmanship under normal usage. To obtain warranty service, please contact us to determine the nature of problem before return the product under this warranty (with a written description of the problem and print samples) for repairing or exchanging.

18