

Superfund Records Center
SITE: Cannon, S
BREAK: 7.8
OTHER: 212310

FINAL

REMOVAL ACTION SUMMARY REPORT

Cannons Engineering Corporation
Plymouth Site
Plymouth, MA

Prepared by:

Inland Pollution Control
a Division of Chemical Waste Management, Inc.

Submitted to:

Responsible Party Project Managers
Cannons Engineering Corp. - Plymouth Site
Plymouth, MA

February 2, 1989



IPC Project Manager



TABLE OF CONTENTS

- 1.0 Narrative Summary and Chronology of Soil Removal Operation
- 2.0 Identification of On-Site Personnel/Responsibilities
- 3.0 Summary of Field Program
 - 3.1 Site Preparation Activities
 - 3.1.1 Results of Baseline Monitoring
 - 3.1.2 Documentation of Site Conditions
 - 3.1.3 Description of Designated Site Access/Egress, Decontamination Areas
 - 3.2 Description of Soil Excavation
 - 3.2.1 Volume of Soil Excavated
 - 3.2.2 Areal Extent of Soil Removal
 - 3.2.3 Summary of Subsurface Conditions (Including VOC Concentrations in Soil Measured in the Field)
 - 3.3 Results of Continuous Air Monitoring
 - 3.3.1 Ambient Air in Berm of Tank #1
 - 3.3.2 Site Perimeter
 - 3.4 Description of Decontaminations Procedures
 - 3.5 Summary of Vehicle Dispatch Records/Manifests
 - 3.6 Soil Transportation and Disposal Summary
 - 3.7 Results of Soil Sampling
 - 3.8 Summary of Site Restoration Activities
 - 3.8.1 Raking of Diked Area
 - 3.8.2 Dismantling of Decontamination Areas
 - 3.8.3 Filling of Excavation Area
 - 3.8.4 Documentation of Post Removal Conditions
 - 3.9 Summary of Health and Safety Procedures
 - 3.10 Summary of Contingency Actions
- 4.0 Equipment Calibration Records
- 5.0 Data Sample Analysis Validation Summary

PLANS/FIGURES

Figure 1 **Site Plan Showing Approximate Air Monitoring Locations**

Figure 2 **Site Plan Showing Areal Extent of Soil Excavation**

APPENDICES

- A Air Monitoring Records
- B Vehicle Dispatch Records
- C Waste Manifests and Disposal Facility Confirmation
- D Soil Excavation Records
- E Equipment Calibration Log
- F Photographs and Photologs

1.0 NARRATIVE SUMMARY AND CHRONOLOGY OF SOIL REMOVAL OPERATION

The following is a narrative summary and chronology of the soil removal operation which took place at the Cannons Engineering Site, Plymouth, MA on Monday, September 12, and Tuesday, September 13, 1988. This project was done in accordance with Section 4.1, Field Program of the Quality Assurance Project Plan prepared by GEI Consultants, Inc., Winchester, MA, and dated September 8, 1988.

The removal action consisted of the excavation of soil in the bermed area of Tank 1 to the visual extent determined by the EPA Regional Project Manager (EPA-RPM), Gregory A. Roscoe. All of the excavated soil was transported to Adams Center Sanitary Landfill, Inc., 4636 Adams Center Road, Fort Wayne, Indiana. In addition, all residual plastic and hardened oil and tar were removed from the ground surface of all of the tank berm areas. The excavation area was backfilled with clean sand, compacted, and graded.

The Removal Action at the Cannons Engineering Site, Plymouth, MA was completed in accordance with Section 4.1, Field Program of the Quality Assurance Project Plan written by GEI Consultants, Inc., Winchester, MA.

After the project was completed, the site was secured and all areas were left in a clean, safe, debris free condition to the satisfaction of the PRP Site Managers and USEPA-RPM.

Monday, September 12, 1988

The IPC crew arrived on site in Plymouth, MA at 6:30 a.m. and set up the site area in preparation for the soil removal operation. At this time, all Baseline Air Monitoring was conducted at monitoring points around the site. The approximate location of air monitoring stations are shown on Figure 1. All dump trailers were parked south of the site on Court Street, as shown in Figure 2. Dump trailers were prepared for loading by the installation of polysheeting within each trailer.

Once the site was prepared, the excavation of soil from the bermed area of Dike No. 1 and the loading of trailers began.

After approximately 200 tons of soil were excavated from the ground in Dike No. 1, the removal was determined to be complete by the EPA RPM.

At this point in time, eleven trailers had been loaded with excavated soil and removed from the site. Three additional trailers were removed from the bermed area of tank #1 following the EPA RPM's decision to cease further excavation.

In summary, five (5) Chemical Waste Management, Inc. (CWM) dump trailers were loaded in the morning and left the site at 1:00 p.m. Five additional CWM dump trailers were loaded in the early afternoon and departed the site at 3:00 p.m. In the late afternoon, four (4) IPC dump trailers were loaded and two of these trailers left the site at 5:00 p.m. The remaining two IPC dump trailers remained on site overnight until conclusion of the project on Tuesday.

All fourteen of the dump trailers used by IPC were properly licensed to transport hazardous waste. All fourteen trailers left with the appropriate hazardous waste manifests. A total of 264 tons of soil was removed from the site in these fourteen dump trailers.

Air monitoring was provided throughout the day each half hour at each of the eight monitoring stations. During the actual excavation, each load of soil was monitored on a periodic basis with the HNu Photoionization Device.

The excavation remained open until the following day.

All personnel had left the site by 6:00 p.m.

Tuesday, September 13, 1988

The IPC crew arrived on site in Plymouth, MA at 7:00 a.m. and opened up the site area which had been secured the evening before in preparation for completion of the project. The completion of the project entailed the backfilling of all excavated areas.

It rained on this second day of the project and for this reason, continuous air monitoring with the HNu could not be conducted. This was confirmed with M. Margaret Hanley, Quality Assurance Officer, GEI Consultants, Inc., who was on site.

The PRP Site Managers directed IPC to regrade unexcavated portions of the diked areas, which were disturbed during the soil removal operation. A misunderstanding between the PRP Site Manager and IPC's equipment contractor resulted in some of the soil excavation area being filled in during the regrading operation. The original excavation area was re-excavated under the supervision of the EPA-RPM.

Soil sampling of the excavation, and the bermed areas was performed by GEI staff between 8:00 am and 12:00 noon.

Following the sampling, the berm areas of Tank 2 and Tank 3 were covered with six inches (6") of clean fill. The berm area surrounding Tank 1 was filled to grade with clean fill and then capped with six inches (6") of additional clean fill.

6-12"

A total of nineteen (19) loads of clean fill were delivered to the site from Plympton Sand and Gravel, Plympton, MA. The total quantity of clean fill was 542.6 tons.

Once all areas had been properly backfilled and capped, all areas were once again secured.

2.0 IDENTIFICATION OF ON-SITE PERSONNEL/RESPONSIBILITIES

<u>Name</u>	<u>Company</u>	<u>Responsibility</u>
Paul C. Connors	IPC	General Manager
R.A. Young	CWM-ENRAC	Site Safety Officer
Stephen Marland	IPC	Project Coordinator
Robert Sirois	IPC	Project Foreman
Pamela Carnicelli	IPC	Environmental Mgr.
Amy Driscoll	IPC	Environmental Asst.
M. Margaret Hanley	GEI Consultants, Inc.	Quality Assurance Officer
Denah Lohmann	GEI Consultants, Inc.	Sampling/Health & Safety
Tim Snay	GEI Consultants, Inc.	Sample Program Manager
Gregory A. Roscoe	USEPA	EPA RPM
Harish Panchal	MADEQE	DEQE - Site Manager
Robert Taggart	American Cyanamid	PRP - Site Manager
Michael Walters	Polaroid Corporation	PRP - Site Manager
Francis Rogerson	Salt Water Trust	Property Owner
Chris Pompeo	L.T. Pompeo & Son	Heavy Equip. Operator
Jim McLaughlin	L.T. Pompeo & Son	Heavy Equip. Operator
Michael Connors	IPC	Field Technician
Michael Pretti	IPC	Field Technician
Roger Tavares	IPC	Driver/Transporation Coord.
David Borofski	IPC	Driver
Byron S. Long	IPC	Driver
Robert Simmons	IPC	Driver
Garth Wilson	CWM	Driver
Wm. Schimschack	CWM	Driver
James A. Hiam	CWM	Driver
David A. Marble	CWM	Driver
Ricky A. Winkleman	CWM	Driver
Tim Quarantillo	CWM	Driver
Donald W. Dixon	CWM	Driver
Nelson Landers	CWM	Driver
Dennis Gaughan	CWM	Driver
J. Kenneth Ryan	CWM	Driver

3.0 SUMMARY OF FIELD PROGRAM

3.1 SITE PREPARATION ACTIVITIES

3.1.1 RESULTS OF BASELINE AIR MONITORING

Baseline Air Monitoring for Volatile Organic Compounds (VOC's) was conducted at the site as outlined within Section 4.1.1. of the Quality Assurance Project Plan (QAPP). Specifically, a south east wind direction was established prior to initiating soil excavation activities by the placement of a windsock upwind of the soil excavation area, at the entrance. This windsock was left up and continuously monitored for wind direction during the period that the field work was being conducted.

Eight additional air monitoring stations were established at equidistant coordinates around the perimeter of the site, as shown in Figure 1. Please see Appendix A for actual Air Monitoring Logs. These logs were completed during the period that the air monitoring was being conducted. Due to rain on second day of the project, IPC personnel were unable to conduct air monitoring. This was confirmed and agreed to by M. Margaret Hanley, the GEI Consultants, Inc. On-site Representative.

IPC personnel monitored ambient air with an HNU systems photoionization device. This screening device is capable of detecting compounds with ionization potentials (IP) of less than 10.6 eV. The instrument is calibrated to a benzene standard, and all subsequent readings are reported in parts per million benzene. During the removal action, no ambient readings above background were detected. Monitoring of ambient air indicates that during the removal action air quality at the site did not pose a threat to public health.

3.1.2 DOCUMENTATION OF SITE CONDITIONS

Site Conditions were documented via photographs taken during the project. Please see Appendix K for photographs and photolog. Photographs 1 through 11 document site conditions prior to excavation. The approximate dimensions of the soil excavation area prior to back-filling on September 15, 1988 were 30 feet by 30 feet.

3.1.3 DESCRIPTION OF DESIGNATED SITE ACCESS/EGRESS, DECONTAMINATION AREAS

The entire site is surrounded by a chain link fence. Vehicle and personnel access and egress areas were limited to the openings in the fence on the east and west sides of the site, as shown in Figure 2. All vehicles involved in actual transportation of the contaminated soil were confined to access from the south entrance and egress from the south entrance, along Court Street.

Decontamination of vehicles and equipment leaving the berm area of Tank 1 was completed on the existing concrete pad on the west egress point on the site.

3.2 DESCRIPTION OF SOIL EXCAVATION

3.2.1 VOLUME OF SOIL EXCAVATED

The total volume of soil removed from the site was 203 cubic yards based on 264 tons of soil at 1.3 tons/yard. This volume included soil removed from the bermed area of tank #1 and soil raked from the ground surface in the bermed areas of tanks #2 and #3. A total of 14 dump trailers were removed from the site. Copies of all hazardous waste manifests used in the transportation of this material are presented in Appendix C.

3.2.2 AREAL EXTENT OF SOIL REMOVAL

See Figure 2 - Site Plan Showing Areal Extent of Soil Excavation.

3.2.3 SUMMARY OF SUBSURFACE CONDITIONS

Soil and fill excavated from the bermed area of tank #1 was composed of a sand, ash and brick. Some stratification in the fill was noted. Surficial soils (0 - 2') were principally composed of a medium sand which was stained black. Fill between 2' and 5' consisted of a mixture of brick, ash and sand. Between 5' and 7' a distinct layer of brick and ash was observed. The brick - ash material was saturated with water. No measurements over background were recorded during field screening of excavated material as measured with an HNu Systems photoionization device. No oily residues were observed in the sub-surface brick - ash material.

3.3 RESULTS OF CONTINUOUS AIR MONITORING

3.3.1 AMBIENT AIR IN BERM OF TANK #1

The results of air monitoring performed during soil excavation are summarized in soil excavation logs which are presented in Appendix D of this report. No measurements over background were recorded during field screening.

3.3.2 SITE PERIMETER

Ambient air at selected locations around the perimeter of the site was monitored with an HNu systems photoionization device on a periodic basis during the first day of the removal action. The results of HNu monitoring at the site perimeter during the first day of the soil removal action are presented in the Air Monitoring Logs presented in Appendix A of this report. No measurements over background were recorded during field screening.

3.4 DESCRIPTION OF DECONTAMINATION PROCEDURES

Decontamination of vehicles and equipment leaving the berm area of Tank 1 was completed on the existing concrete pad on the west egress point on the site. Decontamination was provided by Hazardous Materials Technicians on the concrete pad. Hand brushes were utilized to remove contaminated soil from the tires of the vehicles. All hand brushes were then disposed of with the soil in the dump trailers.

3.5 SUMMARY OF VEHICLE DISPATCH RECORDS/MANIFESTS

Vehicle Dispatch Records and Hazardous Waste Manifests are presented in Appendices B and C respectively.

3.6 SOIL TRANSPORTATION AND DISPOSAL SUMMARY (INCLUDING DATES AND DISPOSAL ACTION)

All of the soil excavated from this site was transported via 14 dump trailer units to the Adams Center Sanitary Landfill, 4636 Adams Center Road, Fort Wayne, Indiana. The following licensed Class 1 drivers employed by Chemical Waste Management, Inc. transported the material to its destination:

Roger Tavares
David Borofski
Byron S. Long
Robert Simmons
Garth Wilson
Wm. Schimschack
James A. Hiam
David A. Marble
Ricky A. Winkleman
Tim Quarantillo
Donald W. Dixon
Nelson Landers
Dennis Gaughan
J. Kenneth Ryan

3.7 RESULTS OF SOIL SAMPLING

A summary of the soil sampling program performed by GEI is presented in the report entitled Soil Sampling Report, Soil Removal Action, Cannons Engineering Corp. Site, Plymouth, MA dated December 12, 1988.

3.8 SUMMARY OF SITE RESTORATION ACTIVITIES

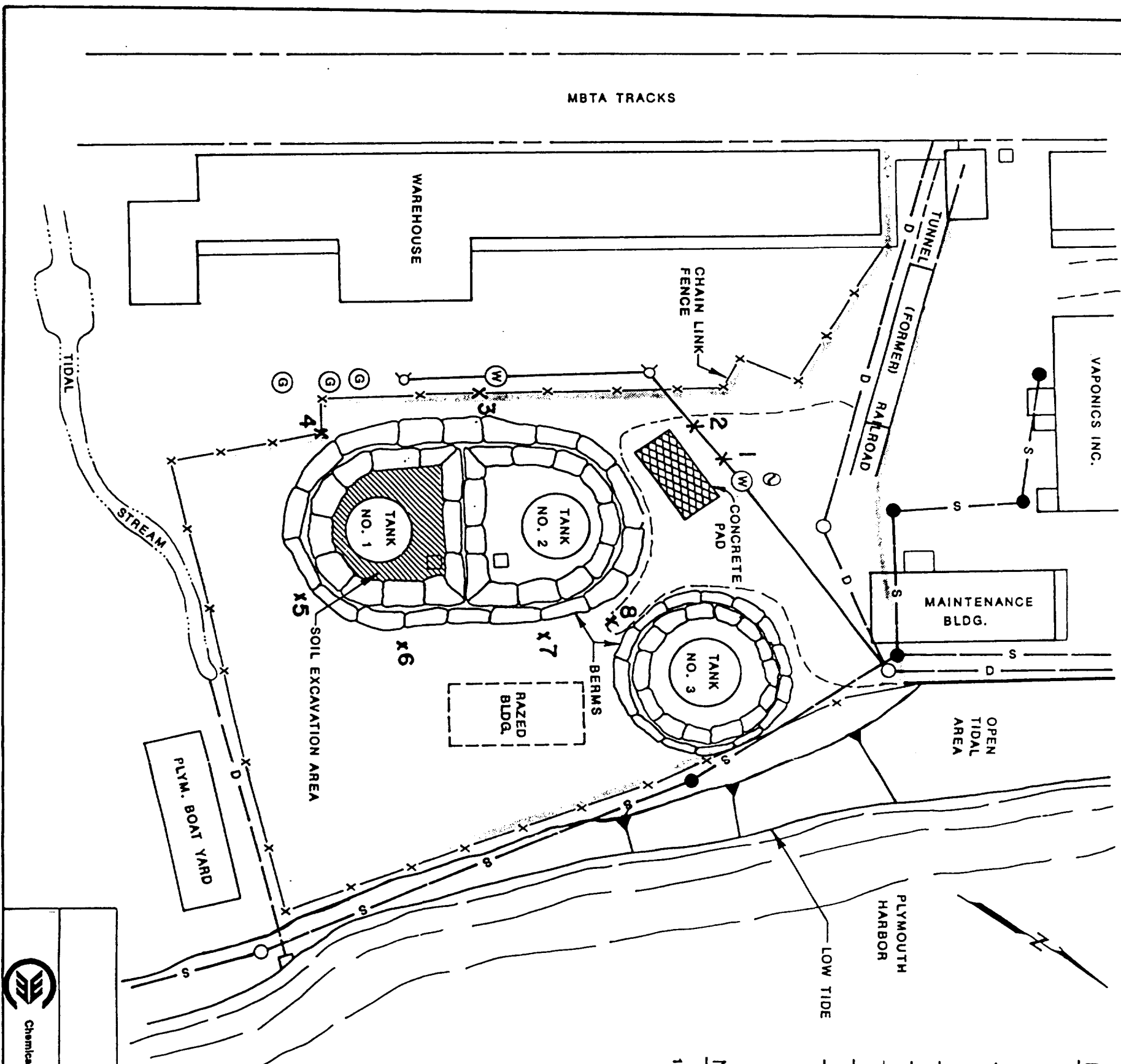
3.8.1 RAKING OF DIKED AREA

Following excavation and sampling, the remaining dike area of Tank 1, and all areas in the dikes of Tanks 2 and 3 were raked to a depth of 6-12 inches utilizing a front end loader. All materials generated as a result of this raking were placed into dump trailers and manifested for transportation. About 50 yards of raked debris and soil was removed from the site.

3.8.2 DISMANTLING OF DECONTAMINATION AREAS

All disposable equipment was gathered together and placed into the dump trailers with the excavated soil prior to decontamination and removed from the site.

Φ



- LEGEND**
- D HYDRANT
 - ⊙ GAS TANK
 - ⊙ WATER LINE
 - ⊙ SITE PERIMETER
 - D DRAIN
 - - - SEWER
 - X FENCE
 - STORM MANHOLE
 - SEWER MANHOLE
- NOTES**
- 1 WIND SOCK
 - 2 - 3 AIR MONITORING STATIONS
 - ⊙ BACKGROUND AIR MONITORING
1. PLAN TAKEN FROM NUS CORP. REMEDIAL INVESTIGATION 1985.


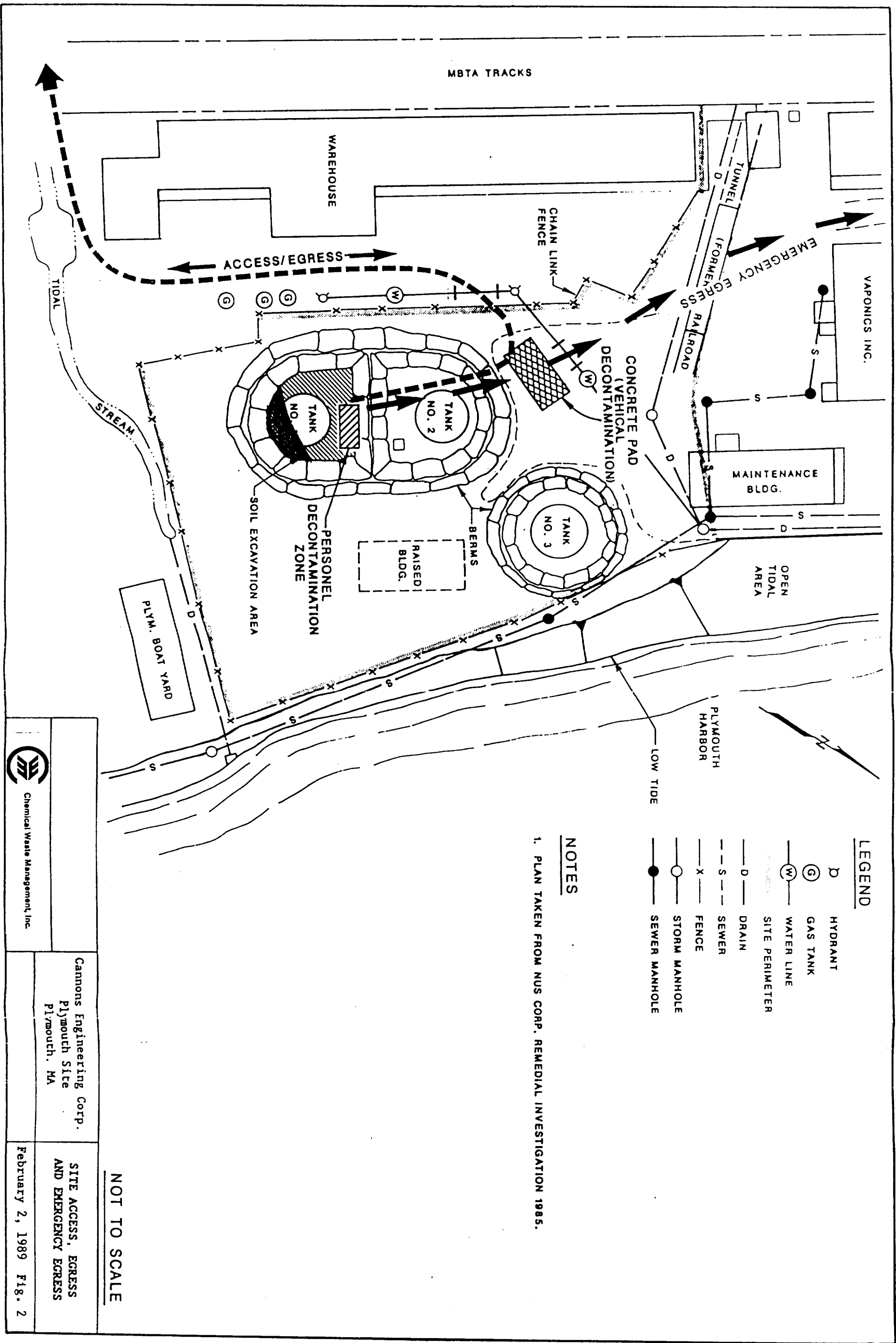
 Chemical Waste Management, Inc.	Cannons Engineering Corp. Plymouth Site Plymouth, MA	SITE PLAN February 2, 1989 FIG. 1
	NOT TO SCALE	

FIGURE 1

SITE PLAN SHOWING APPROXIMATE AIR MONITORING LOCATIONS




LEGEND

- D — HYDRANT
- ⊙ — GAS TANK
- ⊙ — WATER LINE
- ⊙ — SITE PERIMETER
- D — DRAIN
- - - S — SEWER
- X — FENCE
- — STORM MANHOLE
- — SEWER MANHOLE

NOTES

1. PLAN TAKEN FROM NUS CORP. REMEDIAL INVESTIGATION 1985.

 Chemical Waste Management, Inc.	Cannons Engineering Corp. Plymouth Site Plymouth, MA	SITE ACCESS, EGRESS AND EMERGENCY EGRESS
	February 2, 1989 Fig. 2	

NOT TO SCALE

APPENDIX A

AIR MONITORING RECORDS

AIR MONITORING LOG - VOLATILE ORGANIC COMPOUNDS (VOCs)

Site CANNONS ENG.
 Location Plymouth MA
 Air Monitoring Personnel Stephen L. Marland, Bob Young
 Company T.P.C. & CWM

Date 9/12/88 Completed by Stephen Marland
 Air Temperature 75°F Date 9/12/88
 Weather Sunny, Cool QAO signature [Signature]
 Air Monitoring Device (type) HNU Date 12/7/88
 Instrument Serial Number 41240

Time	Station	Wind Direction	VOC (ppm)	QA
8:40 Am	1	South	0.4 ppm	
	2		0.4 ppm	
8:45 Am	3		0.4 ppm	
	4		0.4 ppm	
8:46 Am	5		0.2 ppm	
	6		0.2 ppm	
	7		0.2 ppm	
	8		0.4 ppm	
9:15 Am	1	Background	0.2 ppm	
	2		0.2 ppm	
	3		0.2 ppm	
	4		0.4 ppm	
	5		0.4 ppm	
	6		0.4 ppm	
	7		0.2 ppm	
	8		0.2 ppm	

AIR MONITORING LOG - VOLATILE ORGANIC COMPOUNDS (VOCs)

Site Cannons Ferry
 Location Plymouth MA
 Air Monitoring Personnel Stephen Markel, Bob Young
 Company T.P.C. of W.M.

Date 9/13/88 Completed by Stephen Markel
 Air Temperature 75°F Date 9/13/88
 Weather Sunny + cool QAO signature [Signature]
 Air Monitoring Device (type) HNU Date 9/17/88
 Instrument Serial Number 41240

Time	Station	Wind Direction	VOC (ppm)	QA
9:40 Am	1 Background	South	0.2 ppm	
	2		0.2 ppm	
	3		0.2 ppm	
	4		0.2 ppm	
	5		0.2 ppm	
	6		0.2 ppm	
	7		0.2 ppm	
	8		0.2 ppm	
10:10 Am	1 Background		0.2 ppm	
	2		0.2 ppm	
	3		0.2 ppm	
	4		0.4 ppm	
	5		0.5 ppm	
	6		0.4 ppm	
	7		0.2 ppm	
	8		0.2 ppm	

AIR MONITORING LOG - VOLATILE ORGANIC COMPOUNDS (VOCs)

Site Cannons Eng
Location Plymouth MA
Air Monitoring Personnel Stephen Marland, Bob Yarny
Company E.P.C./G.M.

Date 9/12/88
Air Temperature 25°F
Weather Sunny and Cool
Air Monitoring Device (type) HNU
Instrument Serial Number 41240

Completed by Stephen Marland
Date 9/12/88
QAO signature [Signature]
Date 12/7/88

Time	Station	Wind Direction	VOC (ppm)	QA
10:40A	1 Background	South (Calm)	0.2 ppm	
	2		0.2 ppm	
	3		0.2 ppm	
	4		0.2 ppm	
	5		0.4 ppm	
	6		0.4 ppm	
	7		0.2 ppm	
	8		0.2 ppm	
11:10A	1 Background		0.2 ppm	
	2		0.2 ppm	
	3		0.2 ppm	
	4		0.2 ppm	
	5		0.4 ppm	
	6		0.4 ppm	
	7		0.4 ppm	
	8		0.2 ppm	

AIR MONITORING LOG - VOLATILE ORGANIC COMPOUNDS (VOCs)

Site Cannons Eng.
 Location Plymouth AFB
 Air Monitoring Personnel Stephen Marland, LWM
 Company T.P.C. and LWM

Date 9/12/88 Completed by Stephen Marland
 Air Temperature 75°F Date 9/12/88
 Weather 75°F QAO signature [Signature]
 Air Monitoring Device (type) HNU Date 12/7/88
 Instrument Serial Number 41240

Time	Station	Wind Direction	VOC (ppm)	QA
11:40 AM	1 Background	north (calm)	0.2 ppm	
↓	2	↓	0.2 ppm	
	3		0.2 ppm	
	4		0.2 ppm	
	5		0.8 ppm	
	6		0.4 ppm	
	7		0.2 ppm	
	8		0.2 ppm	
1:15	8 Background	north	0.2 ppm	
↓	2	↓	0.2 ppm	
	3		0.2 ppm	
	4		0.4 ppm	
	5		0.4 ppm	
	6		0.2 ppm	
	7		0.2 ppm	
	8		0.2 ppm	

AIR MONITORING LOG - VOLATILE ORGANIC COMPOUNDS (VOCs)

Site Cannons Ferry
 Location Plymouth MA
 Air Monitoring Personnel Stephen Murland, Bob Young
 Company T.P.C., CWM

Date 9/12/88 Completed by Stephen Murland
 Air Temperature 75°F Date 9/12/88
 Weather Sunny and Cool QAO signature [Signature]
 Air Monitoring Device (type) ~~41250~~ HNU Date 12/7/88
 Instrument Serial Number 41250

Time	Station	Wind Direction	VOC (ppm)	QA
1:45	1 Background	North	0.4 ppm	
	2		0.4 ppm	
	3		1.0	
	4		1.0 ppm	
	5		1.0 ppm	
	6		1.0 ppm	
	7		1.0 ppm	
	8		1.0 ppm	
2:15	1 Background	north	0.2 ppm	
	2		0.4 ppm	
	3		0.4 ppm	
	4		0.4 ppm	
	5		0.4 ppm	
	6		0.4 ppm	
	7		0.4 ppm	
	8		0.4 ppm	

AIR MONITORING LOG - VOLATILE ORGANIC COMPOUNDS (VOCs)

Site Cannons Eng
 Location Plymouth MA
 Air Monitoring Personnel Stephan Marbach, Bob Young
 Company I.P.C., CWM

Date 9/12/88
 Air Temperature 75°F
 Weather Sunny + Cool
 Air Monitoring Device (type) HNU
 Instrument Serial Number 41840

Completed by Stephan Marbach
 Date 9/12/88
 QAO signature [Signature]
 Date 12/7/88

Time	Station	Wind Direction	VOC (ppm)	QA
2:45	1 Background	north	0.2 ppm	
	2		0.2 ppm	
	3		0.2 ppm	
	4		0.4 ppm	
	5		0.4 ppm	
	6		0.4 ppm	
	7		0.2 ppm	
	8		0.2 ppm	
3:15	1 Background	north	0.2 ppm	
	2		0.2 ppm	
	3		0.2 ppm	
	4		0.4 ppm	
	5		0.4 ppm	
	6		0.2 ppm	
	7		0.2 ppm	
	8		0.2 ppm	

AIR MONITORING LOG - VOLATILE ORGANIC COMPOUNDS (VOCs)

Site Cannons Eng
 Location Plymouth MA
 Air Monitoring Personnel Stephen Markel, Bob Young
 Company T.P.C., CWM

Date 9/12/84
 Air Temperature 75°F
 Weather Sunny with Cool
 Air Monitoring Device (type) HNU
 Instrument Serial Number 41240

Completed by Stephen Markel
 Date 9/12/84
 QAO signature [Signature]
 Date 12/7/87

Time	Station	Wind Direction	VOC (ppm)	QA
3:45	1 (Background)	north	0.2 ppm	
}	2	}	0.2 ppm	
	3		0.2 ppm	
	4		0.3 ppm	
	5		0.3 ppm	
	6		0.3 ppm	
	7		0.2 ppm	
	8		0.2 ppm	
	4:15		1 (Background)	north
}	2	}	0.2 ppm	
	3		0.2 ppm	
	4		0.2 ppm	
	5		0.4 ppm	
	6		0.2 ppm	
	7		0.2 ppm	
	8		0.2 ppm	

APPENDIX B

VEHICLE DISPATCH RECORDS

VEHICLE DISPATCH LOG

Site CANNON ENG.
Location Plymouth MA.

Completed by ROGER JAVARES
Signature Roger Javares
Date 9-12-88

QAO signature [Signature]
Date 12/1/88

Vehicle Registration # 86409Z NY
Vehicle Type Dump TRAILER
Vehicle Size 30 yds

Decontamination Method BRUSH

Approximate size of load (cubic yards) 18 yds EST.
40,600 lbs

Name of Driver Ricky A Winkelmann
Employer CWM

Driver's License No. WD9313 00216 280712 59

Manifest # MA C496158 / Bill of Lading 9364A
Time of Departure 11:20 AM

Comments _____

VEHICLE DISPATCH LOG

Site CANNON ENQ.
Location PLYMOUTH MA.

Completed by ROGER TAVARES
Signature Roger Tavares
Date 8-12-88

QAO signature [Signature]
Date 12/7/88

Vehicle Registration #	<u>86416Z NY</u>
Vehicle Type	<u>Dump TRAILER</u>
Vehicle Size	<u>25 yd.</u>
Decontamination Method	<u>BRUSHING</u>
Approximate size of load (cubic yards)	<u>18 yds. EST.</u>
	<u>38,500 lbs</u>
Name of Driver	<u>DAVE MARBLE</u>
Employer	<u>CWMA</u>
Driver's License No.	<u>MO16353384511783-59</u>
Manifest #	<u>MA C496159 / Bill # Ladings #6364B</u>
Time of Departure	<u>11:35 AM</u>
Comments	<u>_____</u> <u>_____</u> <u>_____</u> <u>_____</u>

VEHICLE DISPATCH LOG

Site CANNON ENCL
Location PLYMOUTH KIA.

Completed by ROGER TAVARES
Signature Roger Tavares
Date 8/12/88

QAO signature Ji. Magued/Hon
Date 8/7/88

Vehicle Registration #	<u>864357 NY</u>
Vehicle Type	<u>DUMP TRAILER</u>
Vehicle Size	<u>25 yd</u>
Decontamination Method	<u>DRUSH</u>
Approximate size of load (cubic yards)	<u>18 yds EST.</u>
	<u>35620 lbs</u>
Name of Driver	<u>GARTH WILSON</u>
Employer	<u>CWM</u>
Driver's License No.	<u>ND9450 20633 392416 53</u>
Manifest #	<u>MA C496160 / Bill of Lading 9364C</u>
Time of Departure	<u>1:30pm</u>
Comments	

VEHICLE DISPATCH LOG

Site CANNON ENG.
Location PLYMOUTH MA

Completed by ROGER JAVARES
Signature Roger Javares
Date 9-2-88

QA0 signature [Signature]
Date 12/7/88

Vehicle Registration # 75764 B NY
 Vehicle Type Dump TRAILER
 Vehicle Size 25 yd.

Decontamination Method BRUSH

Approximate size of load (cubic yards) 18 yds. EST
35,300 lbs

Name of Driver Wm Schimschaek
 Employer C.W.M.
 Driver's License No. 50327708563 833264 48

Manifest # MA C49161 / Bill of lading 93640
 Time of Departure 1:15 PM

Comments _____

VEHICLE DISPATCH LOG

Site CANNON BNS
Location plymouth MA

Completed by ROGER TAUVARES
Signature Roger Tauvares
Date 9-12-88

QAO signature W. Mayr
Date 10/7/88

Vehicle Registration #	<u>NY 86426Z</u>
Vehicle Type	<u>DUMP TRAILER</u>
Vehicle Size	<u>30 yds</u>
Decontamination Method	<u>BRUSHING</u>
Approximate size of load (cubic yards)	<u>18 yds EST</u>
	<u>39,740 lbs</u>
Name of Driver	<u>Nelson E Sanders</u>
Employer	<u>CWM</u>
Driver's License No.	<u>201489 14166 528021 43</u>
Manifest #	<u>MA C496162 / Bill of Lading #364E</u>
Time of Departure	<u>11:05 AM</u>
Comments	<u> </u>
	<u> </u>
	<u> </u>
	<u> </u>

VEHICLE DISPATCH LOG

Site CAUNON ENG.
Location Plymouth MA

Completed by ROGER TAVARES
Signature Roger Tavares
Date 9-12-88

QAO signature [Signature]
Date 10/7/88

Vehicle Registration # NY 86431Z
Vehicle Type Dump TRAILER
Vehicle Size 25 yds.

Decontamination Method BRUSHING
Approximate size of load (cubic yards) 18 yds Est.
37,660 lbs

Name of Driver JAMES A. HIAM
Employer C.W.M.
Driver's License No. HO9032-48664 721365 44

Manifest # MA C496163 / Bill of Lading 9364F
Time of Departure 11:20 AM

Comments _____

VEHICLE DISPATCH LOG

Site CANNON EN9.
Location Plymouth MA

Completed by ROGER TAVARES
Signature Roger Tavares
Date 9-12-88

QA0 signature [Signature]
Date 12/7/88

Vehicle Registration # NY 44580C
Vehicle Type Dump Trailer
Vehicle Size 30 yds
Decontamination Method BRUSHING
Approximate size of load (cubic yards) 18 yds EST.
41,300 lbs
Name of Driver TIM QUARANTILLO
Employer C.W.M.
Driver's License No. Q2106075770356565-53
Manifest # MA C496174 / Bill of Lading 9364G
Time of Departure 11:50 AM
Comments _____

VEHICLE DISPATCH LOG

Site CANNON ENG.
Location PLYMOUTH MA.

Completed by ROGER TAVARES
Signature Roger Tavares
Date 9-12-88

QA0 signature [Signature]
Date 12/7/88

Vehicle Registration # X17 86430Z
Vehicle Type Dump TRAILER
Vehicle Size _____

Decontamination Method BRUSHING

Approximate size of load (cubic yards) 18 yds EST.
42,100 lbs

Name of Driver D.M. GAUGHAN
Employer CWM IAC
Driver's License No. 60125348590512586-47

Manifest # MA C496103/Bill of lading 9364H
Time of Departure 1:45 PM

Comments _____

VEHICLE DISPATCH LOG

Site CANNON ENGR
Location Plymouth MA

Completed by ROGER JAVARES
Signature Roger Javares
Date 9-12-88

QA0 signature J. Marget H.
Date 12/17/88

Vehicle Registration # NY 44561C
 Vehicle Type Dump Trailer
 Vehicle Size 30 yds

Decontamination Method BRUSHING

Approximate size of load (cubic yards) 18 yds EST.
43,860 lbs

Name of Driver J. KENNETH RYAN
 Employer CW/M
 Driver's License No. R25062-27893-067664-51

Manifest # MA 496154 / Dillox / Adins 9364 I
 Time of Departure 1:45 PM

Comments _____

VEHICLE DISPATCH LOG

Site CANNON FNS
Location PLYMOUTH MA

Completed by ROGER TAVARES
Signature Roger Tavares
Date 9-12-88

QAO signature [Signature]
Date 12/7/89

Vehicle Registration #	<u>44562C</u>
Vehicle Type	<u>Dump TRAILER</u>
Vehicle Size	<u>30 yds</u>
Decontamination Method	<u>BRUSHING</u>
Approximate size of load (cubic yards)	<u>18 yds est.</u> <u>42,300 lbs</u>
Name of Driver	<u>Donald C. Dixon</u>
Employer	<u>[Signature]</u>
Driver's License No.	<u>009890 48970 685466 55</u>
Manifest #	<u>MA C496155 / Bill of lading 9364 J</u>
Time of Departure	<u>2:25 PM</u>
Comments	<u>_____</u> <u>_____</u> <u>_____</u> <u>_____</u>

VEHICLE DISPATCH LOG

Site Cannons Eng
Location Plymouth MA

Completed by Stephen L. Marshall
Signature Stephen Marshall
Date 9/12/88

QAO signature J. Mayset/Hol
Date 10/7/88

Vehicle Registration # 8951 MA
Vehicle Type Dump Trailer
Vehicle Size _____

Decontamination Method Brushing

Approximate size of load (cubic yards) 18 cubic yards

Name of Driver Bryon Long
Employer Upland Pollution Control
Driver's License No. 287409551 MA

^{Est.}
36,360 lbs.

Manifest # MAC496165 / BL# 93646
Time of Departure 5:50 pm

Comments _____

VEHICLE DISPATCH LOG

Site CANNONS ENG.
Location Plymouth MA.

Completed by Stephen L. Marland QAO signature [Signature]
Signature [Signature] Date 12/7/80
Date 5/12/88

Vehicle Registration #	<u>8935</u>
Vehicle Type	<u>Dump Trailer</u>
Vehicle Size	<u></u>
Decontamination Method	<u>Brushing</u>
Approximate size of load (cubic yards)	<u>18 cubic yards Est</u> <u>37960 lbs</u>
Name of Driver	<u>Roger Travares.</u>
Employer	<u>J.P.C.</u>
Driver's License No.	<u>032305804 MA</u>
Manifest #	<u>MA C496166 / B.L. 9364K</u>
Time of Departure	<u>500 pm</u>
Comments	<u></u> <u></u> <u></u> <u></u>

VEHICLE DISPATCH LOG

Site CANNONS ENDS
Location Plymouth MA

Completed by Stephen L. Marland
Signature Stephen L. Marland
Date 9/12/88

QAO signature M. J. Hanley
Date 12/7/88

Vehicle Registration # 89 S 3 MA
Vehicle Type ARK Truck
Vehicle Size _____

Decontamination Method Brushing

Approximate size of load (cubic yards) 18 cubic yards Est
23,260 lbs

Name of Driver David Borofski
Employer R.P.C.
Driver's License No. 029583003

Manifest # MAC 496172 / B.L. 93644
Time of Departure 10:00 AM 9/13/88

Comments _____

VEHICLE DISPATCH LOG

Site CANNONS Fms.
Location Plymouth MA

Completed by Stephen L. Marland QAO signature [Signature]
Signature [Signature] Date 12/7/88
Date 9/12/88

Vehicle Registration #	<u>8937 MA</u>
Vehicle Type	<u>Dump Trailer</u>
Vehicle Size	<u></u>
Decontamination Method	<u>Brushing</u>
Approximate size of load (cubic yards)	<u>18 cubic yards Est.</u>
	<u>25,960 lbs</u>
Name of Driver	<u>Robert Simmons</u>
Employer	<u>T.P.C.</u>
Driver's License No.	<u>01B447965</u>
Manifest #	<u>MAC496171 / B.L. 9364M</u>
Time of Departure	<u>10AM 9/13/88</u>
Comments	<u></u>
	<u></u>
	<u></u>
	<u></u>

APPENDIX C

WASTE MANIFESTS AND DISPOSAL FACILITY CONFIRMATION



COMMONWEALTH OF MASSACHUSETTS
 DEPARTMENT OF ENVIRONMENTAL QUALITY ENGINEERING
 DIVISION OF SOLID AND HAZARDOUS WASTE
 One Winter Street
 Boston, Massachusetts 02108

Please print or type. (Form designed for use on elite (12-pitch) typewriter.)

UNIFORM HAZARDOUS WASTE MANIFEST		1. Generator US EPA ID No. MAA1P1010101357108		Manifest Document No. C61158		2. Page 1 of 1		Information in the shaded areas is not required by Federal law.					
3. Generator's Name and Mailing Address Cannons Sites Group c/o Laurie Burt One Post Office Square, Boston, MA 02109						A. State Manifest Document Number MA C496158							
4. Generator's Phone (617) 482-1390						B. State Gen. ID Plymouth, MA Gordage Park							
5. Transporter 1 Company Name Chemical Waste Management, Inc.				6. US EPA ID Number IND099202681		C. State Trans. ID 86410971-NY							
7. Transporter 2 Company Name						8. US EPA ID Number							
9. Designated Facility Name and Site Address Adams Center Sanitary Landfill, Inc. 4636 Adams Center Road Fort Wayne, IN 46806						10. US EPA ID Number IND078911146							
11. US DOT Description (Including Proper Shipping Name, Hazard Class, and ID Number)						12. Containers No. Type		13. Total Quantity		14. Unit Wt/Vol		15. Waste No.	
a. Hazardous Waste Solid H.O.S. ORM-E NA 9189						9 9 1 D T		40600		P		NA101	
b.													
c.													
d.													
J. Additional Descriptions for Materials Listed Above (include physical state and hazard code.) a. oil contaminated soil						K. Handling Codes for Wastes Listed Above							
b.						c.							
c.						d.							
15. Special Handling Instructions and Additional Information In the event of accident or spill, please contact Paul Connors at Inland Pollution Control, Inc @ (617) 843-7110 IPC job#9364A Profile #H35622 H.O.# 72271						41240# det							
16. GENERATOR'S CERTIFICATION: I hereby declare that the contents of this consignment are fully and accurately described above by proper shipping name and are classified, packed, marked, and labeled, and are in all respects in proper condition for transport by highway according to applicable international and national government regulations. If I am a large quantity generator, I certify that I have a program in place to reduce the volume and toxicity of waste generated to the degree I have determined to be economically practicable and that I have selected the practicable method of treatment, storage, or disposal currently available to me which minimizes the present and future threat to human health and the environment; OR, if I am a small quantity generator, I have made a good faith effort to minimize my waste generation and select the best waste management method that is available to me and that I can afford.													
Printed/Typed Name Robert Tognoli				Signature On behalf of the Robert Tognoli				Date 9/12/88					
17. Transporter 1 Acknowledgment of Receipt of Materials						Printed/Typed Name Ricky A. Winkler		Signature Ricky Winkler		Date 09/12/88			
18. Transporter 2 Acknowledgment of Receipt of Materials						Printed/Typed Name		Signature		Date			
19. Discrepancy Indication Space													
20. Facility Owner or Operator: Certification of receipt of hazardous materials covered by this manifest except as noted in Item 19.						Printed/Typed Name T. V. Williams		Signature T. V. Williams		Date 09/11/88			

In case of emergency or spill, immediately call the National Response Center (800) 424-8802.



ADAMS CENTER LANDFILL

4636 ADAMS CENTER ROAD
FORT WAYNE, INDIANA 46806
TELEPHONE (219) 447-5585
IND 078911146

**DISPOSAL
MEMO**

59608
CONTROL NUMBER

CUSTOMER COPY

WEIGHT

TIME

DATE

TRUCK
LD #

1ST WT 72600 LB

07:41 AM 09/14/88

1112

RECALL 72600 LB

KEYBOARD REENTRY
08:40 AM 09/14/88

1112

2ND WT 31260 LB

MEMORY

SER #

GROSS 72600 LB

TARE 31260 LB

NET 41340 LB

TONS 20.62

S

HAUL #

TOTAL

1
R
2

WORK ORDER NO. _____

GENERATOR _____

WASTE _____

PROFILE NO. _____

HOUR/DATE _____

SAMPLER _____

QUANTITY _____

PURCHASE ORDER NO. _____

TRANSPORTER _____

SHIP DATE _____

MANIFEST NO. 43614

REC. BY TL

ADD'L NOTIF FORM(S) ATTACHED:

YES NO

FORM # _____

FINGERPRINT ANALYSIS REPORT

SAMPLE NO. 88-10615

PHYSICAL CHARACTERISTICS:

STATE: SOLID SEMI-SOLID
 LIQUID SOLID/LIQUID

LAYERS: 1 COLOR: Brown

NOT APPLICABLE

ODOR: STRONG MILD NONE

WATER MIX:

	YES	NO
GENERATION OF GASES	<input type="checkbox"/>	<input checked="" type="checkbox"/> -
TEMPERATURE CHANGE	<input type="checkbox"/>	<input checked="" type="checkbox"/> ΔT
GENERATION OF EMULSION	<input type="checkbox"/>	<input checked="" type="checkbox"/>
GENERATION OF PRECIPITATE	<input type="checkbox"/>	<input checked="" type="checkbox"/>
<input type="checkbox"/> SOLUBLE <input type="checkbox"/> INSOLUBLE <input checked="" type="checkbox"/> SLIGHTLY SOLUBLE		

HEAVY METAL SCREEN:

PASSES TEST (NON-DETECTABLE)
 FAILS TEST (DETECTABLE)
 NOT APPLICABLE

RADIOACTIVITY SCREEN:

BACKGROUND
 > BACKGROUND

PAINT FILTER TEST:

PASSES TEST (NO LIQUIDS DETECTED)
 FAILS TEST (FREE LIQUIDS DETECTED)
 NOT APPLICABLE

ACTIVE CYANIDE SCREEN:

< 100 PPM
 > 100 PPM
 NOT APPLICABLE

FLAMMABILITY POTENTIAL

POSITIVE
 NEGATIVE

BULK DENSITY

1.2 g/cm³

PENETROMETER

pH:

6

ACCEPTANCE STATUS:

CONFORMING
 NON-CONFORMING
 ACCEPTED FOR DISPOSAL
 REJECTED

REASON(S) FOR REJECTION:

OFF SPEC
 SEE SCREENS ABOVE
 OTHER

COMMENTS:

Kim
LABORATORY SIGN OFF

MANAGEMENT METHOD

SPECIAL HANDLING INSTRUCTIONS _____

DESTINATION:

LANDFILL (D80) 020/BASIC
 DRUM BUILDING (S01)
 STABILIZATION (T21)

COORDINATES _____ OPERATOR _____

COMMENTS _____

COMMONWEALTH OF MASSACHUSETTS
 DEPARTMENT OF ENVIRONMENTAL QUALITY ENGINEERING
 DIVISION OF SOLID AND HAZARDOUS WASTE
 One Winter Street
 Boston, Massachusetts 02108

Please print or type. (Form designed for use on elite (12-pitch) typewriter.)

In case of emergency or spill, immediately call the National Response Center (800) 424-8802.

UNIFORM HAZARDOUS WASTE MANIFEST		1. Generator US EPA ID No. MAIP000003570806159		Manifest Document No. MA C496159		2. Page 1 of 1		Information in the shaded areas is not required by Federal law.			
3. Generator's Name and Mailing Address Cannons Sites Group C/O Laurie Burt One Post Office Square Boston, MA 02109				A. State Manifest Document Number MA C496159		B. State Gen. ID Cordage Park Plymouth, Ma					
4. Generator's Phone (617) 482-1390				6. US EPA ID Number ILLD099202681		C. State Trans. ID 864162-NY					
5. Transporter 1 Company Name Chemical Waste Management, Inc.				8. US EPA ID Number		D. Transporter's Phone (716) 754-8231					
7. Transporter 2 Company Name				10. US EPA ID Number		E. State Trans. ID					
9. Designated Facility Name and Site Address Adams Senior Sanitary Landfill, Inc. 4636 Adams Center Road Fort Wayne, IN 46806				10. US EPA ID Number IND0718191111416		F. Transporter's Phone ()					
11. US DOT Description (Including Proper Shipping Name, Hazard Class, and ID Number)				12. Containers No. Type		13. Total Quantity		14. Unit Wt/Vol		Waste No.	
a. Hazardous Waste Solid H.O.S. ORM-E NA 9189				9 10 11 12 13 14 15 16		8 500		P		MA 0	
b.											
c.											
d.											
J. Additional Descriptions for Materials Listed Above (include physical state and hazard code.)						K. Handling Codes for Wastes Listed Above					
a. oil contaminated soil						a.					
b.						b.					
15. Special Handling Instructions and Additional Information In the event of spill or accident, please contact Paul Connors at Inland Pollution Control, Inc @ (617) 843-7110 IPC job #93648 Profile #135622 HQ #12272						39 080 # Net					
16. GENERATOR'S CERTIFICATION: I hereby declare that the contents of this manifest and the materials described above by proper shipping name and are classified, packed, marked, and labeled, and are in all respects in proper condition for transport by highway according to applicable international and national government regulations.										Date	
I, if I am a large quantity generator, I certify that I have a program in place to reduce the volume and toxicity of waste generated to the degree I have determined to be economically practicable and that I have selected the practicable method of treatment, storage, or disposal currently available to me which minimizes the present and future threat to human health and the environment; OR, if I am a small quantity generator, I have made a good faith effort to minimize my waste generation and select the best waste management method that is available to me and that I can afford.										Date	
Printed/Typed Name Robert Toggart				Signature <i>Robert Toggart</i>				Date 9/12/81			
17. Transporter 1 Acknowledgment of Receipt of Materials				Signature <i>David A Marble</i>				Date 09/12/81			
Printed/Typed Name DAVID A MARBLE				Signature				Date			
18. Transporter 2 Acknowledgment of Receipt of Materials				Signature				Date			
Printed/Typed Name				Signature				Date			
19. Discrepancy Indication Space											
20. Facility Owner or Operator: Certification of receipt of hazardous materials covered by this manifest except as noted in Item 19.										Date	
Printed/Typed Name SANDY K MATCHEW				Signature <i>Sandy K Mat Chew</i>				Date 8/9/11			



ADAMS CENTER LANDFILL

4636 ADAMS CENTER ROAD
FORT WAYNE, INDIANA 46806
TELEPHONE (219) 447-5585
IND 078911146

**DISPOSAL
MEMO**

59610
CONTROL NUMBER

WEIGHT TIME DATE TRUCK ID #

CUSTOMER COPY

1ST WT. 74560 LB 07:46 AM 09/14/88 1654
RECALL 74560 LB KEYBOARD REENTRY 1654
2ND WT. 35480 LB 08:12 AM 09/14/88
MEMORY

GROSS 74560 LB
TARE 35480 LB
NET 39080 LB HALL #

TONS 19.54 \$ TOTAL

SER #
1
R
2

WORK ORDER NO. _____
GENERATOR _____
WASTE _____
PROFILE NO _____
HOUR/DATE _____
SAMPLER _____

QUANTITY _____
PURCHASE ORDER NO. _____
TRANSPORTER 11/11
SHIP DATE 9/14/88 MANIFEST NO. 630415

ADD'L NOTIF. FORM(S) ATTACHED:
 YES NO

REC. BY JW FORM # _____

FINGERPRINT ANALYSIS REPORT

SAMPLE NO. 31-1615

PHYSICAL CHARACTERISTICS:

STATE: SOLID SEMI-SOLID
 LIQUID SOLID/LIQUID
LAYERS: _____ COLOR _____
 NOT APPLICABLE
ODOR: STRONG MILD NONE

WATER MIX:

GENERATION OF GASES YES NO
TEMPERATURE CHANGE YES NO ΔT
GENERATION OF EMULSION YES NO
GENERATION OF PRECIPITATE YES NO
 SOLUBLE INSOLUBLE SLIGHTLY SOLUBLE

EACTIVE SULFIDE SCREEN:
 PASSES TEST (NON-DETECTABLE)
 FAILS TEST (DETECTABLE)
 NOT APPLICABLE

RADIOACTIVITY SCREEN:
 BACKGROUND
 > BACKGROUND

PAINT FILTER TEST:
 PASSES TEST (NO LIQUIDS DETECTED)
 FAILS TEST (FREE LIQUIDS DETECTED)
 NOT APPLICABLE

EACTIVE CYANIDE SCREEN:
 < 100 PPM
 > 100 PPM
 NOT APPLICABLE

FLAMMABILITY POTENTIAL
 POSITIVE
 NEGATIVE

BULK DENSITY **PENETROMETER** **pH:**
1.2 g/cm³ _____ 6

ACCEPTANCE STATUS:
 CONFORMING
 NON-CONFORMING
 ACCEPTED FOR DISPOSAL
 REJECTED

REASON(S) FOR REJECTION:
 OFF SPEC
 SEE SCREENS ABOVE
 OTHER

COMMENTS:

LABORATORY SIGN OFF K...

MANAGEMENT METHOD

SPECIAL HANDLING INSTRUCTIONS _____

DESTINATION: landfill
 LANDFILL (D80) COORDINATES 3-1 OPERATOR _____
 DRUM BUILDING (S01) COMMENTS _____
 STABILIZATION (T21)

DEPARTMENT OF ENVIRONMENTAL QUALITY ENGINEERING
DIVISION OF SOLID AND HAZARDOUS WASTE

One Winter Street
Boston, Massachusetts 02108

Please print or type. (Form designed for use on elite (12-pitch) typewriter.)

UNIFORM HAZARDOUS WASTE MANIFEST		1. Generator US EPA ID No. MA P 0 0 0 0 0 3 5 7 0 8 C 6 1 6 0		Manifest Document No.		2. Page 1 of 1		Information in the shaded areas is not required by Federal law.					
3. Generator's Name and Mailing Address Cannons Sites Group c/o Laurie Burt One Post Office Square Boston, Ma 02109						A. State Manifest Document Number MA: C496160							
4. Generator's Phone (617) 482-1390						B. State Gen. ID Cordage Park							
5. Transporter 1 Company Name Chemical Waste Mgt., Inc.				6. US EPA ID Number I L D 0 1 9 1 9 2 0 2 6 8 1		C. State Trans. ID MA 8641357							
7. Transporter 2 Company Name						D. Transporter's Phone (716) 754-8231							
9. Designated Facility Name and Site Address Adams Center Sanitary Landfill, Inc. 4636 Adams Center Road Fort Wayne, IN 46806						E. State Trans. ID							
10. US EPA ID Number I N D 0 7 8 9 1 1 1 1 6						F. Transporter's Phone ()							
11. US DOT Description (Including Proper Shipping Name, Hazard Class, and ID Number)						12. Containers		13. Total Quantity		14. Unit Wt/Vol		15. Waste No.	
a. Hazardous Waste Solid N.O.S. ORN-K NA 9189						0 0 1 D T		3 5 6 2 0		P		MA 10 11	
b.													
c.													
d.													
J. Additional Descriptions for Materials Listed Above (include physical state and hazard code.) oil contaminated soil						K. Handling Codes for Wastes Listed Above							
a.						b.							
c.						d.							
15. Special Handling Instructions and Additional Information In the event of accident or spill, please contact Paul Connors at Inland Pollution Control, Inc @ (617) 843-7110 36320 #NA IPC job #9634C Profial # H35622 H.O. #72272													
16. GENERATOR'S CERTIFICATION: I hereby declare that the contents of this consignment are fully and accurately described above by proper shipping name and are classified, packed, marked, and labeled, and are in all respects in proper condition for transport by highway according to applicable international and national government regulations.													
If I am a large quantity generator, I certify that I have a program in place to reduce the volume and toxicity of waste generated to the degree I have determined to be economically practicable and that I have selected the practicable method of treatment, storage, or disposal currently available to me which minimizes the present and future threat to human health and the environment. OR, if I am a small quantity generator, I have made a good faith effort to minimize my waste generation and select the best waste management method that is available to me and that I can afford.													
Printed/Typed Name Robert Tarrant										Signature <i>Robert Tarrant</i>		Date 09/12/89	
17. Transporter 1 Acknowledgement of Receipt of Materials													
Printed/Typed Name GARTH WILSON										Signature <i>Garth Wilson</i>		Date 09/12/89	
18. Transporter 2 Acknowledgement of Receipt of Materials													
Printed/Typed Name										Signature		Date	
19. Discrepancy Indication Space													
20. Facility Owner or Operator: Certification of receipt of hazardous materials covered by this manifest except as noted in Item 19.													
Printed/Typed Name <i>John A. ...</i>										Signature <i>John A. ...</i>		Date 09/14/89	

In case of emergency or spill, immediately call the National Response Center (800) 424-8802.



ADAMS CENTER LANDFILL

4636 ADAMS CENTER ROAD
FORT WAYNE, INDIANA 46806
TELEPHONE (219) 447-5585
IND 078911146

DISPOSAL
MEMO

59611
CONTROL NUMBER

WEIGHT TIME DATE TRUCK I.D.#

CUSTOMER COPY

WORK ORDER NO. _____
GENERATOR _____
WASTE _____
PROFILE NO. _____
HOUR/DATE _____
SAMPLER _____

1ST WT. 73860 LB
RECALL 73860 LB
2ND WT. 37480 LB
GROSS 73860 LB
TARE 37480 LB
NET 36380 LB
TONS 18.19

07:48 AM 09/14/88
KEYBOARD REENTRY
08:17 AM 09/14/88

1728
1328

MEMORY

SER #

HAUL #

TOTAL

QUANTITY _____
PURCHASE ORDER NO. _____
TRANSPORTER Phm
SHIP DATE 9/14/88 MANIFEST NO. 0364C

ADD'L NOTIF. FORM(S) ATTACHED:
 YES NO

REC. BY TW FORM #:

FINGERPRINT ANALYSIS REPORT

SAMPLE NO. 28-10115

PHYSICAL CHARACTERISTICS:

STATE: SOLID SEMI-SOLID
 LIQUID SOLID/LIQUID

LAYERS: _____ COLOR _____
 NOT APPLICABLE

ODOR: STRONG MILD NONE

WATER MIX:

GENERATION OF GASES YES NO
TEMPERATURE CHANGE YES NO ΔT
GENERATION OF EMULSION YES NO
GENERATION OF PRECIPITATE YES NO
 SOLUBLE INSOLUBLE SLIGHTLY SOLUBLE

REACTIVE SULFIDE SCREEN:

PASSES TEST (NON-DETECTABLE)
 FAILS TEST (DETECTABLE)
 NOT APPLICABLE

RADIOACTIVITY SCREEN:

BACKGROUND
 > BACKGROUND

PAINT FILTER TEST:

PASSES TEST (NO LIQUIDS DETECTED)
 FAILS TEST (FREE LIQUIDS DETECTED)
 NOT APPLICABLE

REACTIVE CYANIDE SCREEN:

< 100 PPM
 > 100 PPM _____
 NOT APPLICABLE

FLAMMABILITY POTENTIAL

POSITIVE
 NEGATIVE

BULK DENSITY

1.2 g/cm³

PENETROMETER

pH:

6

ACCEPTANCE STATUS:

CONFORMING
 NON-CONFORMING
 ACCEPTED FOR DISPOSAL
 REJECTED

REASON(S) FOR REJECTION:

OFF SPEC
 SEE SCREENS ABOVE
 OTHER

COMMENTS:

Kim
LABORATORY SIGN OFF

MANAGEMENT METHOD

SPECIAL HANDLING INSTRUCTIONS _____

DESTINATION:

LANDFILL (D80) CR-11111C
 DRUM BUILDING (S01)
 STABILIZATION (T21)

COORDINATES: 41° 11' N OPERATOR: JH

COMMENTS _____

COMMONWEALTH OF MASSACHUSETTS
 DEPARTMENT OF ENVIRONMENTAL QUALITY ENGINEERING
 DIVISION OF SOLID AND HAZARDOUS WASTE
 One Winter Street
 Boston, Massachusetts 02108

Please print or type. (Form designed for use on elite (12-pitch) typewriter.)

UNIFORM HAZARDOUS WASTE MANIFEST		1. Generator US EPA ID No. MA P 0 0 0 0 3 5 7 0 8 C 6 1 6 1		Manifest Document No.		2. Page 1 of 1		Information in the shaded areas is not required by Federal law.					
3. Generator's Name and Mailing Address Cannons Sites Group C/O Laurie Burt One Post Office Square Boston, Ma 02109						A. State Manifest Document Number MA C496161							
4. Generator's Phone (617) 482-1390						B. State Gen. ID Cordage Park							
5. Transporter 1 Company Name Chemical Waste Mgt., Inc.						C. State Trans. ID Plymouth, Ma NY 75764A							
6. US EPA ID Number ILD099202681						D. Transporter's Phone (716) 754-8231							
7. Transporter 2 Company Name						E. State Trans. ID							
8. US EPA ID Number						F. Transporter's Phone ()							
9. Designated Facility Name and Site Address Adams Center Sanitary Landfill 4636 Adams Center Road Fort Wayne, IN 46806						G. State Facility's ID Not Required							
10. US EPA ID Number ILD0789111166						H. Facility's Phone (219) 447-5585							
11. US DOT Description (Including Proper Shipping Name, Hazard Class, and ID Number)						12. Containers		13. Total Quantity		14. Unit Wt/Vol		15. Waste No.	
a. Hazardous Waste Solid H.O.S. ORM-K NA 9189						No. Type		35300		P		MA 01	
b.													
c.													
d.													
J. Additional Descriptions for Materials Listed Above (include physical state and hazard code.) oil contaminated soil						K. Handling Codes for Wastes Listed Above.							
b.													
15. Special Handling Instructions and Additional Information In the event of accident or spill, please contact Paul Connors at Inland Pollution Control, Inc @ (617) 843-7110 IPC job #96340 Profile #15622 H.O. # 72274						Date 09/12/88							
16. GENERATOR'S CERTIFICATION: I hereby certify that the waste described above by proper shipping name and are classified, packed, marked, and labeled, and are in all respects in proper condition for transport by highway according to applicable international and national government regulations. If I am a large quantity generator, I certify that I have a program in place to reduce the volume and toxicity of waste generated to the degree I have determined to be economically practicable and that I have selected the practicable method of treatment, storage, or disposal currently available to me which minimizes the present and future threat to human health and the environment. OR, if I am a small quantity generator, I have made a good faith effort to minimize my waste generation and select the best waste management method that is available to me and that I can afford.						Signature On behalf of the Robert Tuzgok Cannons Sites Group							
17. Transporter 1 Acknowledgement of Receipt of Materials						Date 09/12/88							
Printed/Typed Name Wm Schimschack						Signature Wm Schimschack							
18. Transporter 2 Acknowledgement of Receipt of Materials						Date							
Printed/Typed Name						Signature							
19. Discrepancy Indication Space						Date							
20. Facility Owner or Operator: Certification of receipt of hazardous materials covered by this manifest except as noted in Item 19.						Date							
Printed/Typed Name SANOH H. MATHER						Signature SANOH H. MATHER							

In case of emergency or spill, immediately call the National Response Center (800) 424-8802.



ADAMS CENTER LANDFILL

4636 ADAMS CENTER ROAD
FORT WAYNE, INDIANA 46806
TELEPHONE (219) 447-5585
IND 078911146

**DISPOSAL
MEMO**

59609
CONTROL NUMBER

WEIGHT TIME DATE TRUCK
ID #

CUSTOMER COPY

WORK ORDER NO. _____

GENERATOR _____

WASTE _____

PROFILE NO. _____

HOUR/DATE _____

SAMPLER _____

1ST WT 71980 LB
RECALL 71980 LB
2ND WT 76380 LB

07:44 AM 09/14/88
REBOARD CENTER
08:01 AM 09/14/88

1656

GROSS 71980 LB
TARE 56280 LB
NET 15700 LB

MEMORY

SER #

HAUL #

TONS 17.50

S

TOTAL

1
R
2

QUANTITY _____

PURCHASE ORDER NO. _____

TRANSPORTER Chm Wm J. ...

SHIP DATE 9/14/88 MANIFEST NO. ...

ADD'L NOTIF. FORM(S) ATTACHED:
 YES NO

REC. BY TW

FORM # _____

FINGERPRINT ANALYSIS REPORT

SAMPLE NO. 88-10615

PHYSICAL CHARACTERISTICS:

STATE: SOLID SEMI-SOLID
 LIQUID SOLID/LIQUID

LAYERS: _____ COLOR _____

NOT APPLICABLE

ODOR: STRONG MILD NONE

WATER MIX:

	YES	NO
GENERATION OF GASES	<input type="checkbox"/>	<input type="checkbox"/>
TEMPERATURE CHANGE	<input type="checkbox"/>	<input checked="" type="checkbox"/> <u>ΔT</u>
GENERATION OF EMULSION	<input type="checkbox"/>	<input type="checkbox"/>
GENERATION OF PRECIPITATE	<input type="checkbox"/>	<input type="checkbox"/>
<input type="checkbox"/> SOLUBLE <input type="checkbox"/> INSOLUBLE <input type="checkbox"/> SLIGHTLY SOLUBLE		

ACTIVE SULFIDE SCREEN:

PASSES TEST (NON-DETECTABLE)
 FAILS TEST (DETECTABLE)
 NOT APPLICABLE

RADIOACTIVITY SCREEN:

BACKGROUND
 > BACKGROUND

PAINT FILTER TEST:

PASSES TEST (NO LIQUIDS DETECTED)
 FAILS TEST (FREE LIQUIDS DETECTED)
 NOT APPLICABLE

ACTIVE CYANIDE SCREEN:

< 100 PPM
 > 100 PPM
 NOT APPLICABLE

FLAMMABILITY POTENTIAL

POSITIVE
 NEGATIVE

BULK DENSITY	PENETROMETER	pH:
<u>1.2</u> g/cm ³		<u>6</u>

ACCEPTANCE STATUS:

CONFORMING
 NON-CONFORMING
 ACCEPTED FOR DISPOSAL
 REJECTED

REASON(S) FOR REJECTION:

OFF SPEC
 SEE SCREENS ABOVE
 OTHER

COMMENTS: _____

LABORATORY SIGN OFF

MANAGEMENT METHOD

SPECIAL HANDLING INSTRUCTIONS _____

ORIGIN: _____

- LANDFILL (D80)
- DRUM BUILDING (S01)
- STABILIZATION (T21)

COORDINATES _____ OPERATOR _____

COMMENTS _____

COMMONWEALTH OF MASSACHUSETTS
 DEPARTMENT OF ENVIRONMENTAL QUALITY ENGINEERING
 DIVISION OF SOLID AND HAZARDOUS WASTE
 One Winter Street
 Boston, Massachusetts 02108

Use print or type. (Form designed for use on elite (12-pitch) typewriter.)

UNIFORM HAZARDOUS WASTE MANIFEST		1. Generator US EPA ID No. MA P 0 0 0 0 3 5 7 0 8 C 6 1 6 2		Manifest Document No.	2. Page 1 of 1	Information in the shaded areas is not required by Federal law.	
3. Generator's Name and Mailing Address Cannons Sites Group c/o Laurie Burt One Post Office Square Boston, Ma 02109				A. State Manifest Document Number MA 496162		B. State Gen. ID Cordage Park Plymouth, MA	
4. Generator's Phone (617) 482-1390				C. State Trans. ID MY 15161262		D. Transporter's Phone (716) 754-8231	
5. Transporter 1 Company Name Chemical Waste Mgt., Inc.		6. US EPA ID Number ILLD 0 9 9 2 0 2 6 8 1		E. State Trans. ID		F. Transporter's Phone	
7. Transporter 2 Company Name		8. US EPA ID Number		G. State Facility's ID		H. Facility's Phone (219) 447-5503	
9. Designated Facility Name and Site Address Adams Center Sanitary Landfill, Inc. 4636 Adams Ctr. Road Fort Wayne, IN 40806				10. US EPA ID Number IND 0 7 8 9 1 1 1 4 6		G. State Facility's ID Not Required	
11. US DOT Description (Including Proper Shipping Name, Hazard Class, and ID Number)				12. Containers No.	13. Total Quantity	14. Unit Wt/Vol	15. Waste No.
a. Hazardous Waste Solid N.O.S. ORN-E NA 9189				0 0 1	D T 39740	P	MA 01
b.							
c.							
d.							
J. Additional Descriptions for Materials Listed Above (include physical state and hazard code.) oil contaminated soil				K. Handling Codes for Wastes Listed Above			
a.				b.			
b.				c.			
c.				d.			
15. Special Handling Instructions and Additional Information In the event of accident or spill, please contact Paul Connors at Inland Pollution Control, Inc @ (617) 843-7110 IPC Job # 96345 Profile # H35622 H.O. # 72275							
16. GENERATOR'S CERTIFICATION: This by certifying that the contents of this container are fully and accurately described above by proper shipping name and are classified, packed, marked, and labeled, and are in all respects in proper condition for transport by highway according to applicable international and national government regulations. If I am a large quantity generator, I certify that I have a program in place to reduce the volume and toxicity of waste generated to the degree I have determined to be economically practicable and that I have selected the practicable method of treatment, storage, or disposal currently available to me which minimizes the present and future threat to human health and the environment, OR, if I am a small quantity generator, I have made a good faith effort to minimize my waste generation and select the best waste management method that is available to me and that I can afford.							
Printed/Typed Name Robert Toppert				Signature <i>Robert Toppert</i>		Date 09/12/88	
17. Transporter 1 Acknowledgment of Receipt of Materials				Signature <i>Nelson E Landers</i>		Date 09/12/88	
Printed/Typed Name NELSON E LANDERS				Signature		Date	
18. Transporter 2 Acknowledgment of Receipt of Materials				Signature		Date	
Printed/Typed Name				Signature		Date	
19. Discrepancy Indication Space							
20. Facility Owner or Operator: Certification of receipt of hazardous materials covered by this manifest except as noted in item 19.							
Printed/Typed Name Tracy Williams				Signature <i>Tracy Williams</i>		Date 09/15/88	

Form Approved OMB No. 2050-0039 Expires 9-30-91
 EPA Form 8700-22 (Rev. 9-88) Previous editions are obsolete.



ADAMS CENTER LANDFILL

4636 ADAMS CENTER ROAD
FORT WAYNE, INDIANA 46806
TELEPHONE (219) 447-5585
IND 078911146

DISPOSAL
MEMO

58624
CONTROL NUMBER

WEIGHT TIME DATE TRUCK ID #

CUSTOMER COPY

1ST WT. 72100 LB 10:10 PM 09/14/88 1677

WORK ORDER NO. _____

RECALL

GENERATOR _____

2ND WT. 32700 LB KEYBOARD REENTRY 1677

WASTE _____

72080 LB 10:10 PM 09/14/88

PROFILE NO. _____

GROSS

HOUR/DATE _____

TARE 72080 LB

SAMPLER _____

NET 32700 LB

39380 LB

TONS \$ TOTAL

19.69

QUANTITY 204

PURCHASE ORDER NO. _____

ADD'L NOTIF. FORM(S) ATTACHED:

TRANSPORTER W/M

YES NO

SHIP DATE 9/15/88 MANIFEST NO. 4364 E REC. BY TW FORM #:

FINGERPRINT ANALYSIS REPORT

SAMPLE NO. 88-10700

PHYSICAL CHARACTERISTICS:

STATE: SOLID SEMI-SOLID
 LIQUID SOLID/LIQUID

LAYERS: 1 COLOR Brown

NOT APPLICABLE

ODOR: STRONG MILD NONE

WATER MIX:

GENERATION OF GASES YES NO
TEMPERATURE CHANGE YES NO ΔT
GENERATION OF EMULSION YES NO
GENERATION OF PRECIPITATE YES NO
 SOLUBLE INSOLUBLE SLIGHTLY SOLUBLE

REACTIVE SULFIDE SCREEN:

PASSES TEST (NON-DETECTABLE)
 FAILS TEST (DETECTABLE)
 NOT APPLICABLE

RADIOACTIVITY SCREEN:

BACKGROUND
 > BACKGROUND

PAINT FILTER TEST:

PASSES TEST (NO LIQUIDS DETECTED)
 FAILS TEST (FREE LIQUIDS DETECTED)
 NOT APPLICABLE

ACTIVE CYANIDE SCREEN:

< 100 PPM
 > 100 PPM
 NOT APPLICABLE

FLAMMABILITY POTENTIAL

POSITIVE
 NEGATIVE

BULK DENSITY

1.2 g/cm³

PENETROMETER

pH:

6

ACCEPTANCE STATUS:

CONFORMING
 NON-CONFORMING
 ACCEPTED FOR DISPOSAL
 REJECTED

REASON(S) FOR REJECTION:

OFF SPEC
 SEE SCREENS ABOVE
 OTHER

COMMENTS:

K. M.
LABORATORY SIGN OFF

MANAGEMENT METHOD

SPECIAL HANDLING INSTRUCTIONS _____

DESTINATION

LANDFILL (D80) DL-1/BASIC
 DRUM BUILDING (S01)
 STABILIZATION (T21)

COORDINATES 3-D1-20

OPERATOR: SDM

COMMENTS _____



COMMONWEALTH OF MASSACHUSETTS
DEPARTMENT OF ENVIRONMENTAL QUALITY ENGINEERING
DIVISION OF SOLID AND HAZARDOUS WASTE

One Winter Street
Boston, Massachusetts 02108

Please print or type. (Form designed for use on elite (12-pitch) typewriter.)

UNIFORM HAZARDOUS WASTE MANIFEST		1. Generator US EPA ID No. MAA P 0 0 0 0 3 5 7 0 8		Manifest Document No. 0 6 1 1 6 3		2. Page 1 of 1		Information in the shaded areas is not required by Federal law.					
3. Generator's Name and Mailing Address Cannons Sites Gropp c/o Laurie Burt One Post Office Square Boston, Ma 02109						A. State Manifest Document Number MA C496163							
4. Generator's Phone (617) 482-1390						B. State Gen. ID Cordage Park Plymouth, MA							
5. Transporter 1 Company Name Chemical Waste Mgt., Inc.				6. US-EPA ID Number ILD 0 9 9 2 0 2 6 8 1		C. State Trans. ID My 86431Z							
7. Transporter 2 Company Name				8. US EPA ID Number		D. Transporter's Phone (716) 754-823							
9. Designated Facility Name and Site Address Adams Center Sanitary Landfill, Inc. 4636 Adams Center Road Fort Wayne, IN 46806						10. US EPA ID Number TND 0 7 8 9 1 1 1 6 6							
11. US DOT Description (Including Proper Shipping Name, Hazard Class, and ID Number)						12. Containers		13. Total Quantity		14. Unit Wt/Vol		15. Waste No.	
a. Hazardous Waste Solid N.O.S. ORM-E NA 9189						No. 9 0 1 D		Type 37660		P		MA 01	
b.													
c.													
d.													
J. Additional Descriptions for Materials Listed Above (include physical state and hazard code.) a. oil contaminated soil						K. Handling Codes for Wastes Listed Above							
b.						c.							
d.						e.							
15. Special Handling Instructions and Additional Information IPC job #9634F Profile #H35622 In the event of accident of spill, please contact Paul Connors at Inland Pollution Control, Inc @ (617) 843-711										U.O. 37800# 472276			
16. GENERATOR'S CERTIFICATION: I hereby declare that the contents of this consignment are fully and accurately described above by proper shipping name and are classified, packed, marked, and labeled, and are in all respects in proper condition for transport by highway according to applicable international and national government regulations.													
If I am a large quantity generator, I certify that I have a program in place to reduce the volume and toxicity of waste generated to the degree I have determined to be economically practicable and that I have selected the practicable method of treatment, storage, or disposal currently available to me which minimizes the present and future threat to human health and the environment; OR, if I am a small quantity generator, I have made a good faith effort to minimize my waste generation and select the best waste management method that is available to me and that I can afford.													
Printed/Typed Name Robert Taggart										Signature <i>Robert Taggart</i>		Date 19/12/88	
17. Transporter 1 Acknowledgement of Receipt of Materials													
Printed/Typed Name James A. Hiam										Signature <i>James A. Hiam</i>		Date 019/12/88	
18. Transporter 2 Acknowledgement of Receipt of Materials													
Printed/Typed Name										Signature		Date	
19. Discrepancy Indication Space													
20. Facility Owner or Operator: Certification of receipt of hazardous materials covered by this manifest except as noted in Item 19.													
Printed/Typed Name <i>[Signature]</i>										Signature <i>[Signature]</i>		Date 19/12/88	

In case of emergency or spill, immediately call the National Response Center (800) 424-8802.



ADAMS CENTER LANDFILL

4636 ADAMS CENTER ROAD
FORT WAYNE, INDIANA 46806
TELEPHONE (219) 447-5585
IND 078911146

DISPOSAL
MEMO

59812
CONTROL NUMBER

WEIGHT TIME DATE TRUCK ID #

CUSTOMER COPY

WORK ORDER NO. 11

1ST WT 73900 LB 07:51 AM 09/14/88 1665
RECALL 73900 LB KEYBOARD REENTRY 1665
2ND WT 36100 LB 08:21 AM 09/14/88

GENERATOR _____

GROSS 73900 LB MEMORY SER #

WASTE _____

TARE 36100 LB

PROFILE NO. _____

NET 37800 LB HAUL #

HOUR/DATE _____

TONS 18.90 \$ TOTAL

SAMPLER _____

QUANTITY _____

PURCHASE ORDER NO. _____

ADD'L NOTIF. FORM(S) ATTACHED:

TRANSPORTER W.M. Green - a person

YES NO

SHIP DATE 9/14/88 MANIFEST NO. 0504 F

REC. BY TW FORM # _____

FINGERPRINT ANALYSIS REPORT

SAMPLE NO. 88-10615

PHYSICAL CHARACTERISTICS:

STATE: SOLID SEMI-SOLID
 LIQUID SOLID/LIQUID

LAYERS: _____ COLOR _____

NOT APPLICABLE

ODOR: STRONG MILD NONE

WATER MIX:

GENERATION OF GASES YES NO
TEMPERATURE CHANGE YES NO ΔT
GENERATION OF EMULSION YES NO
GENERATION OF PRECIPITATE YES NO
 SOLUBLE INSOLUBLE SLIGHTLY SOLUBLE

REACTIVE SULFIDE SCREEN:

PASSES TEST (NON-DETECTABLE)
 FAILS TEST (DETECTABLE)
 NOT APPLICABLE

RADIOACTIVITY SCREEN:

BACKGROUND
 > BACKGROUND

PAINT FILTER TEST:

PASSES TEST (NO LIQUIDS DETECTED)
 FAILS TEST (FREE LIQUIDS DETECTED)
 NOT APPLICABLE

REACTIVE CYANIDE SCREEN:

< 100 PPM
 > 100 PPM
 NOT APPLICABLE

FLAMMABILITY POTENTIAL

POSITIVE
 NEGATIVE

BULK DENSITY

1.2 g/cm³

PENETROMETER

pH:

6

ACCEPTANCE STATUS:

CONFORMING
 NON-CONFORMING
 ACCEPTED FOR DISPOSAL
 REJECTED

REASON(S) FOR REJECTION:

OFF SPEC
 SEE SCREENS ABOVE
 OTHER

COMMENTS:

K. M.
LABORATORY SIGN OFF

MANAGEMENT METHOD

SPECIAL HANDLING INSTRUCTIONS _____

DESTINATION

LANDFILL (D80) C.M. HARRIS
 DRUM BUILDING (S01)
 STABILIZATION (T21)

COORDINATES 31-1 OPERATOR SW

COMMENTS _____



COMMONWEALTH OF MASSACHUSETTS
DEPARTMENT OF ENVIRONMENTAL QUALITY ENGINEERING
DIVISION OF SOLID AND HAZARDOUS WASTE

One Winter Street
Boston, Massachusetts 02108

Please print or type. (Form designed for use on elite (12-pitch) typewriter.)

UNIFORM HAZARDOUS WASTE MANIFEST		1. Generator US EPA ID No. MA P 0 0 0 0 0 3 5 1 7 0 1 8 C 6 1 1 7 A		Manifest Document No. 1		2. Page 1 of 1		Information in the shaded areas is not required by Federal law.					
3. Generator's Name and Mailing Address Cannous Sites Group c/o Laurie Burt One Post Office Square, Boston, MA 02109						A. State Manifest Document Number MA C496174							
4. Generator's Phone (617) 482-1390						B. State Gen. ID Cordage Fk, Plymouth, MA							
5. Transporter 1 Company Name Chemical Waste Management, Inc.				6. US EPA ID Number I L D 0 9 9 2 0 2 6 8 1		C. State Trans. ID NY 445800							
7. Transporter 2 Company Name						D. Transporter's Phone (-716) 754-8231							
9. Designated Facility Name and Site Address Adams Center Sanitary Landfill, Inc. 4636 Adams Center Road Fort Wayne, IN 46806						E. State Trans. ID							
10. US EPA ID Number I N D 0 1 7 8 9 1 1 1 1 6 6						F. Transporter's Phone ()							
11. US DOT Description (Including Proper Shipping Name, Hazard Class, and ID Number)						12. Containers		13. Total Quantity		14. Unit Wt/Vol		Waste No.	
a. Hazardous Waste Solid, H.O.S. ORM-E NA 9189						0 0 1 1 D T 4 1 3 0 0		P		MA 0 1			
b.													
c.													
d.													
J. Additional Descriptions for Materials Listed Above (include physical state and hazard code.)						K. Handling Codes for Wastes Listed Above							
a. Oil contaminated soil						a.							
b.						b.							
15. Special Handling Instructions and Additional Information W.O. # 72277 In the event of accident or spill, please contact Paul Connors at Inland Pollution Control (617) 843-7110. IPC job #9364C Profile #35622													
16. GENERATOR'S CERTIFICATION: I hereby declare that the contents of this consignment are fully and accurately described above by proper shipping name and are classified, packed, marked, and labeled, and are in all respects in proper condition for transport by highway according to applicable international and national government regulations. If I am a large quantity generator, I certify that I have a program in place to reduce the volume and toxicity of waste generated to the degree I have determined to be economically practicable and that I have selected the practicable method of treatment, storage, or disposal currently available to me which minimizes the present and future threat to human health and the environment. OR, if I am a small quantity generator, I have made a good faith effort to minimize my waste generation and select the best waste management method that is available to me and that I can afford.						Net 41700 lbs							
Printed/Typed Name Robert Taggart						Signature <i>Robert Taggart</i>		Date 09/15/88					
17. Transporter 1 Acknowledgement of Receipt of Materials						Printed/Typed Name TIA QUARANTILLO		Signature <i>Tia Quarantillo</i>		Date 09/12/88			
18. Transporter 2 Acknowledgement of Receipt of Materials						Printed/Typed Name		Signature		Date			
19. Discrepancy Indication Space													
20. Facility Owner or Operator: Certification of receipt of hazardous materials covered by this manifest except as noted in Item 19.						Printed/Typed Name SOMBY		Signature <i>Somy</i>		Date 09/14/88			

In case of emergency or spill, immediately call the National Response Center (800) 424-8802.

Form Approved (OMB No. 7050-0039, Expires 7-30-91)

EPA Form 8700-22 (Rev. 9-86) Previous editions are obsolete.



ADAMS CENTER LANDFILL

4636 ADAMS CENTER ROAD
FORT WAYNE, INDIANA 46806
TELEPHONE (219) 447-5585
IND 078911146

DISPOSAL
MEMO

59681
CONTROL NUMBER

WEIGHT TIME DATE TRUCK ID #

CUSTOMER COPY

WORK ORDER NO. _____

1ST WT 73820 LB 11:33 AM 09/14/88 1674

GENERATOR _____

RECALL 73820 LB KEYBOARD REENTRY 1674

WASTE _____

2ND WT 72120 LB 12:47 PM 09/14/88

PROFILE NO. _____

GROSS 73820 LB

HOUR/DATE _____

TARE 72120 LB

SAMPLER _____

NET 4700 LB

QUANTITY _____

TONS 10.85 \$ TOTAL

PURCHASE ORDER NO. _____

ADD'L NOTIF. FORM(S) ATTACHED:

TRANSPORTER _____

YES NO

SHIP DATE _____

MANIFEST NO. _____

REC. BY _____

FORM # _____

FINGERPRINT ANALYSIS REPORT

SAMPLE NO. _____

PHYSICAL CHARACTERISTICS:

STATE: SOLID SEMI-SOLID
 LIQUID SOLID/LIQUID

LAYERS: _____ COLOR _____

NOT APPLICABLE

ODOR: STRONG MILD NONE

WATER MIX:

GENERATION OF GASES YES NO
TEMPERATURE CHANGE YES NO ΔT
GENERATION OF EMULSION YES NO
GENERATION OF PRECIPITATE YES NO
 SOLUBLE INSOLUBLE SLIGHTLY SOLUBLE

REACTIVE SULFIDE SCREEN:

PASSES TEST (NON-DETECTABLE)
 FAILS TEST (DETECTABLE)
 NOT APPLICABLE

RADIOACTIVITY SCREEN:

BACKGROUND
 > BACKGROUND

PAINT FILTER TEST:

PASSES TEST (NO LIQUIDS DETECTED)
 FAILS TEST (FREE LIQUIDS DETECTED)
 NOT APPLICABLE

ACTIVE CYANIDE SCREEN:

< 100 PPM
 > 100 PPM _____
 NOT APPLICABLE

FLAMMABILITY POTENTIAL

POSITIVE
 NEGATIVE

BULK DENSITY

g/cm³

PENETROMETER

pH:

ACCEPTANCE STATUS:

CONFORMING
 NON-CONFORMING
 ACCEPTED FOR DISPOSAL
 REJECTED

REASON(S) FOR REJECTION:

OFF SPEC
 SEE SCREENS ABOVE
 OTHER

COMMENTS:

LABORATORY SIGN OFF _____

MANAGEMENT METHOD

SPECIAL HANDLING INSTRUCTIONS: _____

DESTINATION: _____

LANDFILL (D80) _____
 DRUM BUILDING (S01) _____
 STABILIZATION (T21) _____

COORDINATES: _____ OPERATOR: _____

COMMENTS: _____

COMMONWEALTH OF MASSACHUSETTS
 DEPARTMENT OF ENVIRONMENTAL QUALITY ENGINEERING
 DIVISION OF SOLID AND HAZARDOUS WASTE
 One Winter Street
 Boston, Massachusetts 02108

Please print or type. (Form designed for use on elite (12-pitch) typewriter.)

If you are a generator, immediately call the National Response Center (800) 424-8802.

UNIFORM HAZARDOUS WASTE MANIFEST		1. Generator US EPA ID No. MA P 00003 579	Manifest Document No. 61153	2. Page 1 of 1	Information in the shaded areas is not required by Federal law.	
3. Generator's Name and Mailing Address Cannons Sites Group c/o Laurie Burt One Post Office Square, Boston, MA 02109			A. State Manifest Document Number MA C496153		B. State Gen. ID	
4. Generator's Phone (617) 482-1390			C. State Trans. ID MA 86430Z		D. Transporter's Phone ()	
5. Transporter 1 Company Name Chemical Waste Management, Inc.		6. US EPA ID Number IL 099929268	E. State Trans. ID		F. Transporter's Phone (716 754-8231)	
7. Transporter 2 Company Name		8. US EPA ID Number	G. State Facility's ID Not Required		H. Facility's Phone (219 447-5585)	
9. Designated Facility Name and Site Address Adams Center Sanitary Landfill, Inc. 4636 Adams Center Road Fort Wayne, IN 46806			10. US EPA ID Number IND 078911146			
11. US DOT Description (Including Proper Shipping Name, Hazard Class, and ID Number)			12. Containers No.	13. Total Quantity	14. Unit Wt/Vol	15. Waste No.
a. Hazardous Waste Solid, N.O.S. ORM-E NA 9189				001 DT 42100	P	MA 01
b.						
c.						
d.						
Additional Descriptions for Materials Listed Above (include physical state and hazard code.)			K. Handling Codes for Wastes Listed Above			
a. Oil-contaminated soil			a.			
b.			b.			
c.			c.			
d.			d.			
15. Special Handling Instructions and Additional Information W.O. 472278 In the event of accident or spill, please contact Paul Connors at Inland Pollution Control (617) 843-7110. IPC Job #9364R Profile #H35622						
16. GENERATOR'S CERTIFICATION: I hereby declare that the contents of this consignment are fully and accurately described above by proper shipping name and are classified, packed, marked, and labeled, and are in all respects in proper condition for transport by highway according to applicable international and national government regulations. If I am a large quantity generator, I certify that I have a program in place to reduce the volume and toxicity of waste generated to the degree I have determined to be economically practicable and that I have selected the practicable method of treatment, storage, or disposal currently available to me which minimizes the present and future threat to human health and the environment. OR, if I am a small quantity generator, I have made a good faith effort to minimize my waste generation and select the best waste management method that is available to me and that I can afford. Not 43020thoup						
Printed/Typed Name Robert T. Tappan			Signature <i>Robert T. Tappan</i>		Date 09/12/88	
17. Transporter 1 Acknowledgement of Receipt of Materials			Signature <i>Dennis M. Gaughan</i>		Date 09/12/88	
Printed/Typed Name DENNIS M. GAUGHAN			Signature		Date	
18. Transporter 2 Acknowledgement of Receipt of Materials			Signature		Date	
Printed/Typed Name			Signature		Date	
19. Discrepancy Indication Space						
20. Facility Owner or Operator: Certification of receipt of hazardous materials covered by this manifest except as noted in item 19.						
Printed/Typed Name SANDY			Signature <i>Sandy</i>		Date 09/12/88	

Form Approved OMB No. 2050-0049, Expires 9-30-81
 EPA Form 8700-22 (Rev. 9-86) Previous editions are obsolete.

COPY > 4: TSDf-RETAINED BY TSDf



ADAMS CENTER LANDFILL

4636 ADAMS CENTER ROAD
FORT WAYNE, INDIANA 46806
TELEPHONE (219) 447-5585
IND 078911146

DISPOSAL
MEMO

59683
CONTROL NUMBER

CUSTOMER COPY

WORK ORDER NO. _____

GENERATOR _____

WASTE _____

PROFILE NO. _____

HOUR/DATE _____

SAMPLER _____

	WEIGHT	TIME	DATE	TRUCK ID #
1ST WT	73440 LB	11:36 AM	09/14/88	1657
RECALL	73440 LB	KEYBOARD REENTRY		1657
2ND WT	30420 LB	12:59 PM	09/14/88	
GROSS	73440 LB	MEMORY		SER #
TARE	30420 LB			
NET	43020 LB			
TONS	31.51	\$	HAUL #	TOTAL

QUANTITY _____

PURCHASE ORDER NO. _____

TRANSPORTER Ch...

SHIP DATE 9/14/88 MANIFEST NO. 97244 REC. BY [Signature]

ADD'L NOTIF. FORM(S) ATTACHED:
 YES NO

FINGERPRINT ANALYSIS REPORT

SAMPLE NO. _____

PHYSICAL CHARACTERISTICS:

STATE: SOLID SEMI-SOLID
 LIQUID SOLID/LIQUID

LAYERS: _____ COLOR _____

NOT APPLICABLE

ODOR: STRONG MILD NONE

WATER MIX:

	YES	NO
GENERATION OF GASES	<input type="checkbox"/>	<input type="checkbox"/>
TEMPERATURE CHANGE	<input type="checkbox"/>	<input checked="" type="checkbox"/> ΔT
GENERATION OF EMULSION	<input type="checkbox"/>	<input type="checkbox"/>
GENERATION OF PRECIPITATE	<input type="checkbox"/>	<input type="checkbox"/>
<input type="checkbox"/> SOLUBLE <input type="checkbox"/> INSOLUBLE <input type="checkbox"/> SLIGHTLY SOLUBLE		

ACTIVE SULFIDE SCREEN:

PASSES TEST (NON-DETECTABLE)
 FAILS TEST (DETECTABLE)
 NOT APPLICABLE

RADIOACTIVITY SCREEN:

BACKGROUND
 > BACKGROUND

PAINT FILTER TEST:

PASSES TEST (NO LIQUIDS DETECTED)
 FAILS TEST (FREE LIQUIDS DETECTED)
 NOT APPLICABLE

ACTIVE CYANIDE SCREEN:

< 100 PPM
 > 100 PPM _____
 NOT APPLICABLE

FLAMMABILITY POTENTIAL

POSITIVE
 NEGATIVE

BULK DENSITY

g/cm³

PENETROMETER

pH: _____

ACCEPTANCE STATUS:

CONFORMING
 NON-CONFORMING
 ACCEPTED FOR DISPOSAL
 REJECTED

REASON(S) FOR REJECTION:

OFF SPEC
 SEE SCREENS ABOVE
 OTHER

COMMENTS:

LABORATORY SIGN OFF

MANAGEMENT METHOD

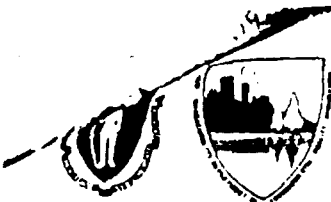
SPECIAL HANDLING INSTRUCTIONS: _____

CONTAINER: _____

LANDFILL (D80) _____
 DRUM BUILDING (S01)
 STABILIZATION (T21)

COORDINATES: 2 11 OPERATOR _____

COMMENTS: _____



**COMMONWEALTH OF MASSACHUSETTS
DEPARTMENT OF ENVIRONMENTAL QUALITY ENGINEERING
DIVISION OF SOLID AND HAZARDOUS WASTE
One Winter Street
Boston, Massachusetts 02108**

Please print or type (Form designed for use on elite (12 pitch) typewriter.)

UNIFORM HAZARDOUS WASTE MANIFEST		1. Generator US EPA ID No MA P 0 0 0 0 3 5 7 0 8		Manifest Document No. C 6 1 5 4	2. Page 1 of 1	Information in the shaded areas is not required by Federal law	
3. Generator's Name and Mailing Address Cannone Sites Group c/o Laurie Burt One Post Office Square, Boston, MA 02109					A. State Manifest Document Number MA C 4 9 6 1 5 4		
4. Generator's Phone (617) 482-1390					B. State Gen. ID Cordage Pk., Blymouth, MA		
5. Transporter 1 - Company Name Chemical Waste Management, Inc.					C. State Trans. ID MY 44 561 C		
6. US EPA ID Number IL ID 0 9 1 9 1 2 1 0 1 2 1 6 1 8 1 1					D. Transporter's Phone (716) 754-8231		
7. Transporter 2 - Company Name					E. State Trans. ID		
9. Designated Facility Name and Site Address Adams Center Sanitary Landfill, Inc. 4636 Adams Center Road Fort Wayne, IN 46806					F. Transporter's Phone ()		
10. US EPA ID Number IN D 0 7 8 9 1 1 1 1 4 1 6					G. State Facility's ID Not Required		
11. US DOT Description (including Proper Shipping Name, Hazard Class, and ID Number)					12. Containers		13. Total Quantity
					No.	Type	14. Unit Wt/Vol
a. Hazardous Waste Solid, N.O.S. ORM-B NA 9189					0	0	1
						D	I
							43860
							P
							M/A 01
J. Additional Descriptions for Materials Listed Above (include physical state and hazard code.)					K. Handling Codes for Wastes Listed Above		
a. Oil contaminated soil					a.	b.	c.
b.					d.		
15. Special Handling Instructions and Additional Information W.O. #72279 In case of accident or spill please contact Paul Connors at Island Pollution Control (617) 843-7110 IPC Job #93641 Profile #H35622 NCF 4/2/88							
I certify that the contents of this assignment are fully and accurately described above by proper shipping name and are classified, packed, marked, and labeled, and are in all respects in proper condition for transport by highway according to applicable international and national government regulations.							
If I am a large quantity generator, I certify that I have a program in place to reduce the volume and toxicity of waste generated to the degree I have determined to be economically practicable and that I have selected the practicable method of treatment, storage, or disposal currently available to me which minimizes the present and future threat to human health and the environment. If I am a small quantity generator, I have made a good faith effort to minimize my waste generation and select the best waste management method that is available to me and that I can afford.							
Printed/Typed Name Robert T. ...					Signature <i>Robert T. ...</i>		Date 09/12/89
17. Transporter 1 Acknowledgment of Receipt of Materials					Signature <i>J. Kenneth Ryan</i>		Date 09/12/89
Printed/Typed Name J. KENNETH RYAN					Signature <i>J. Kenneth Ryan</i>		Date 09/12/89
18. Transporter 2 Acknowledgment of Receipt of Materials					Signature		Date
Printed/Typed Name					Signature		Date
19. Discrepancy Indication Space							
20. Facility Owner or Operator: Certification of receipt of hazardous materials covered by this manifest except as noted in item 19.							
Printed/Typed Name <i>Stanley ...</i>					Signature <i>Stanley ...</i>		Date 09/12/89

GENERATOR

TRANSPORTER

FACILITY

Form 8700-22 (Rev. 9-86) Previous editions are obsolete.



ADAMS CENTER LANDFILL

4636 ADAMS CENTER ROAD
FORT WAYNE, INDIANA 46806
TELEPHONE (219) 447-5585
IND 078911146

**DISPOSAL
MEMO**

58626
CONTROL NUMBER

CUSTOMER COPY

WORK ORDER NO. _____

GENERATOR _____

WASTE _____

PROFILE NO. _____

HOUR/DATE _____

SAMPLER _____

QUANTITY 2000

PURCHASE ORDER NO. _____

TRANSPORTER Dell...

SHIP DATE 11/15/88

WEIGHT TIME DATE TRUCK ID #

1ST WT 75280 LB 10:22 PM 09/14/88 1655

RECALL 31900 LB KEYBOARD REENTRY 1655

2ND WT 75280 LB 10:22 PM 09/14/88

GROSS 75280 LB MEMORY SER #

TARE 31900 LB

NET 43380 LB HAIL #

TONS 21.69 \$ TOTAL

1
R
2

ADD'L NOTIF. FORM(S) ATTACHED:

YES NO

FINGERPRINT ANALYSIS REPORT

SAMPLE NO. 88-15700

PHYSICAL CHARACTERISTICS:
STATE: SOLID SEMI-SOLID
 LIQUID SOLID/LIQUID
LAYERS: _____ COLOR: _____
 NOT APPLICABLE
ODOR: STRONG MILD NONE

WATER MIX:
GENERATION OF GASES YES NO
TEMPERATURE CHANGE YES NO ΔT _____
GENERATION OF EMULSION YES NO
GENERATION OF PRECIPITATE YES NO
 SOLUBLE INSOLUBLE SLIGHTLY SOLUBLE

INACTIVE SULFIDE SCREEN:
 PASSES TEST (NON-DETECTABLE)
 FAILS TEST (DETECTABLE)
 NOT APPLICABLE

RADIOACTIVITY SCREEN:
 BACKGROUND
 > BACKGROUND

PAINT FILTER TEST:
 PASSES TEST (NO LIQUIDS DETECTED)
 FAILS TEST (FREE LIQUIDS DETECTED)
 NOT APPLICABLE

ACTIVE CYANIDE SCREEN:
 < 100 PPM
 > 100 PPM
 NOT APPLICABLE

FLAMMABILITY POTENTIAL
 POSITIVE
 NEGATIVE

BULK DENSITY
1.2 g/cm³

PENETROMETER

pH:
6

ACCEPTANCE STATUS:
 CONFORMING
 NON-CONFORMING
 ACCEPTED FOR DISPOSAL
 REJECTED

REASON(S) FOR REJECTION:
 OFF SPEC
 SEE SCREENS ABOVE
 OTHER

COMMENTS:

K...
LABORATORY SIGN OFF

MANAGEMENT METHOD

SPECIAL HANDLING INSTRUCTIONS _____

DESTINATION: _____ COORDINATES 39-14-18 OPERATOR [Signature]

- LANDFILL (D80) [Signature]
- DRUM BUILDING (S01)
- STABILIZATION (T21)

COMMENTS _____

COMMONWEALTH OF MASSACHUSETTS
 DEPARTMENT OF ENVIRONMENTAL QUALITY ENGINEERING
 DIVISION OF SOLID AND HAZARDOUS WASTE
 One Winter Street
 Boston, Massachusetts 02108

Please print or type. (Form designed for use on elite (12 pitch) typewriter.)

In case of emergency or spill, immediately call the National Response Center (800) 424-8802.

UNIFORM HAZARDOUS WASTE MANIFEST		1. Generator US EPA ID No. MA P 0 0 0 0 3 5 7 0 8 0 6 1 5 5		Manifest Document No. MA P 0 0 0 0 3 5 7 0 8 0 6 1 5 5		2. Page 1 of 1		Information in the shaded areas is not required by Federal law.			
3. Generator's Name and Mailing Address Cannons Sites Group c/o Laurie Burt One Post Office Square, Boston, MA 02109						A. State Manifest Document Number MA C496155					
4. Generator's Phone (617) 482-1390						B. State Gen. ID Cordage Pk., Plymouth, MA					
5. Transporter 1 Company Name Chemical Waste Management, Inc.			6. US EPA ID Number IL D 0 9 9 2 0 2 6 8 1			C. State Trans. ID NY 14562C					
7. Transporter 2 Company Name			8. US EPA ID Number			D. Transporter's Phone (716) 754-8231					
9. Designated Facility Name and Site Address Adams Center Sanitary Landfill, Inc. 4636 Adams Center Road Fort Wayne, IN 46806			10. US EPA ID Number IN D 0 7 8 9 1 1 1 4 6			E. State Trans. ID					
11. US DOT Description (Including Proper Shipping Name, Hazard Class, and ID Number) Hazardous Waste Solid, N.O.S. ORM-H NA 9189						12. Containers No. Type 0 0 1 D 142300		13. Total Quantity P		14. Unit Wt/Vol MA P 1	
J. Additional Descriptions for Materials Listed Above (Include physical state and hazard code.) a. Oil contaminated soil						K. Handling Codes for Wastes Listed Above					
15. Special Handling Instructions and Additional Information W.O. #72280 In case of accident or spill please contact Paul Connors at Inland Pollution Control (617) 843-7110 Profile #E35622 & IPC Job #9364J						16. GENERATOR'S CERTIFICATION: I hereby declare that the contents of this consignment are fully and accurately described above by proper shipping name and are classified, packed, marked, and labeled, and are in all respects in proper condition for transport by highway according to applicable international and national government regulations.					
17. Transporter 1 Acknowledgment of Receipt of Materials Printed/Typed Name: Robert Tregiant Signature: <i>Robert Tregiant</i> Date: 9/12/88						18. Transporter 2 Acknowledgment of Receipt of Materials Printed/Typed Name: Donald C. Dwyer Signature: <i>Donald C. Dwyer</i> Date: 9/12/88					
19. Discrepancy Indication Space						20. Facility Owner or Operator: Certification of receipt of hazardous materials covered by this manifest except as noted in Item 19. Printed/Typed Name: Paul Connors Signature: <i>Paul Connors</i> Date: 9/12/88					

Form Approved OMB No. 2050-0039, Expires 9-30-91

EPA Form 8700-22 (Rev. 9-86) Previous editions are obsolete.

COPY>4:

TSDf-RETAINED BY TSDf



ADAMS CENTER LANDFILL

4636 ADAMS CENTER ROAD
FORT WAYNE, INDIANA 46806
TELEPHONE (219) 447-5585
IND 078911146

DISPOSAL
MEMO

59882
CONTROL NUMBER

CUSTOMER COPY

WEIGHT	TIME	DATE	TRUCK ID #
1ST WT. 75460 LB	11:42 AM	09/14/88	1675
RECALL 75460 LB	KEYBOARD REENTRY		1675
2ND WT 31860 LB	12:34 PM	09/14/88	
GROSS 75460 LB	MEMORY		
TARE 31860 LB			
NET 43600 LB			
TONS 21.80			

WORK ORDER NO: _____
 GENERATOR _____
 WASTE _____
 PROFILE NO. _____
 HOUR/DATE _____
 SAMPLER _____

QUANTITY _____
 PURCHASE ORDER NO. _____
 TRANSPORTER W. C. D. Y.
 SHIP DATE 9/14/88 MANIFEST NO. 73617

ADD'L NOTIF. FORM(S) ATTACHED:
 YES NO
 REC. BY 41 FORM #:

FINGERPRINT ANALYSIS REPORT

SAMPLE NO. _____

PHYSICAL CHARACTERISTICS:

STATE: SOLID SEMI-SOLID
 LIQUID SOLID/LIQUID

LAYERS: _____ COLOR _____

NOT APPLICABLE

ODOR: STRONG MILD NONE

WATER MIX:

	YES	NO
GENERATION OF GASES	<input type="checkbox"/>	<input type="checkbox"/>
TEMPERATURE CHANGE	<input type="checkbox"/>	<input type="checkbox"/> ΔT
GENERATION OF EMULSION	<input type="checkbox"/>	<input type="checkbox"/>
GENERATION OF PRECIPITATE	<input type="checkbox"/>	<input type="checkbox"/>
<input type="checkbox"/> SOLUBLE <input type="checkbox"/> INSOLUBLE <input type="checkbox"/> SLIGHTLY SOLUBLE		

EACTIVE SULFIDE SCREEN:

PASSES TEST (NON-DETECTABLE)
 FAILS TEST (DETECTABLE)
 NOT APPLICABLE

RADIOACTIVITY SCREEN:

BACKGROUND
 > BACKGROUND

PAINT FILTER TEST:

PASSES TEST (NO LIQUIDS DETECTED)
 FAILS TEST (FREE LIQUIDS DETECTED)
 NOT APPLICABLE

REACTIVE CYANIDE SCREEN:

< 100 PPM
 > 100 PPM
 NOT APPLICABLE

FLAMMABILITY POTENTIAL

POSITIVE
 NEGATIVE

BULK DENSITY

g/cm³

PENETROMETER

pH:

ACCEPTANCE STATUS:

CONFORMING
 NON-CONFORMING
 ACCEPTED FOR DISPOSAL
 REJECTED

REASON(S) FOR REJECTION:

OFF SPEC
 SEE SCREENS ABOVE
 OTHER

COMMENTS:

LABORATORY SIGN OFF

MANAGEMENT METHOD

SPECIAL HANDLING INSTRUCTIONS _____

DESTINATION _____

LANDFILL (D80) _____
 DRUM BUILDING (S01) _____
 STABILIZATION (T21) _____

COORDINATES 3-2 OPERATOR _____

COMMENTS _____

1
R
2



DEPARTMENT OF ENVIRONMENTAL QUALITY ENGINEERING
 DIVISION OF SOLID AND HAZARDOUS WASTE
 One Winter Street
 Boston, Massachusetts 02108

Please print or type. Form designed for use on elite (12 pitch) typewriter.

In case of emergency or spill, immediately call the National Response Center (800) 424-8802

UNIFORM HAZARDOUS WASTE MANIFEST		1. Generator US EPA ID No MA P 0 0 0 0 3 5 7 0 8 C 6 1 6 6	Manifest Document No. 6 1 6 6	2. Page 1 of 1	Information in the shaded areas is not required by Federal law	
3. Generator's Name and Mailing Address Cannons Sites Group c/o Lauréa Burt One Post Office Square, Boston, MA 02109			A. State Manifest Document Number MA C496166		B. State Gen. ID	
4. Generator's Phone (617) 482-1390			6. US EPA ID Number MA D 9 8 2 1 9 1 3 1 4		C. State Waste ID MA 8935	
5. Transporter 1 Company Name Inland Pollution Control			7. Transporter 2 Company Name		D. Transporter's Phone (667) 843-7110	
9. Designated Facility Name and Site Address Adams Center Sanitary Landfill, Inc. 4636 Adams Center Road Fort Payne, TN 46806			8. US EPA ID Number IN D 0 7 8 9 1 1 1 4 6		E. State Trans. ID	
11. US DOT Description (Including Proper Shipping Name, Hazard Class, and ID Number) Hazardous Waste Solid, H.O.S. OSM-E MA 9189			12. Containers No.	13. Total Quantity	14. Unit Wt/Vol	15. Waste No.
				0 0 1 D T 3 7 9 6 0	P	MA 0 1
J. Additional Descriptions for Materials Listed Above (include physical state and hazard code.) Oil contaminated soil			K. Handling Codes for Wastes Listed Above			
b.			a.			
c.			b.			
d.			c.			
15. Special Handling Instructions and Additional Information W.O. #72282 In the event of accident or spill, please contact Paul Connors at Inland Connors at Inland Pollution Control (617)843-7110 Profile #M39622 IPC Job #9364K						
16. GENERATOR'S CERTIFICATION: I hereby declare that the contents of this consignment are fully and accurately described above by proper shipping name and are classified, packed, marked, and labeled, and are in all respects in proper condition for transport by highway according to applicable international and national government regulations.						
If I am a large quantity generator, I certify that I have a program in place to reduce the volume and toxicity of waste generated to the degree I have determined to be economically practicable and that I have selected the practicable method of treatment, storage, or disposal currently available to me, which minimizes the present and future threat to human health and the environment. OR: If I am a small quantity generator, I have made a good faith effort to minimize my waste generation and select the best waste management method that is available to me and that I can afford.						
Printed/Typed Name			Signature		Date	
Roger Tavares			<i>Roger Tavares</i>		09/12/88	
17. Transporter 1 Acknowledgement of Receipt of Materials			Signature		Date	
Printed/Typed Name ROGER TAVARES 229			<i>Roger Tavares</i>		09/12/88	
18. Transporter 2 Acknowledgement of Receipt of Materials			Signature		Date	
Printed/Typed Name			Signature		Date	
19. Discrepancy Indication Space						
20. Facility Owner or Operator. Certification of receipt of hazardous materials covered by this manifest except as noted in Item 19.						
Printed/Typed Name Tracy Williams			Signature <i>Tracy Williams</i>		Date 10/11/88	



ADAMS CENTER LANDFILL

4636 ADAMS CENTER ROAD
FORT WAYNE, INDIANA 46806
TELEPHONE (219) 447-5585
IND 078911146

**DISPOSAL
MEMO**

59637
CONTROL NUMBER

CUSTOMER COPY

WORK ORDER NO. _____

GENERATOR _____

WASTE _____

PROFILE NO. _____

HOUR/DATE _____

SAMPLER _____

QUANTITY _____

PURCHASE ORDER NO. _____

TRANSPORTER: Waste Management

SHIP DATE: 09/14/88 MANIFEST NO. 4501R

WEIGHT	TIME	DATE	TRUCK I.D. #
1ST WT. 74920 LB	10:02 AM	09/14/88	4
RECALL 74920 LB	KEYBOARD REENTRY		4
2ND WT. 36960 LB	10:39 AM	09/14/88	
GROSS 74920 LB	MEMORY		SER #
TARE 36960 LB			
NET 37960 LB			
TONS 18.98	\$		TOTAL

ADD'L NOTIF. FORM(S) ATTACHED:

YES NO

REC. BY: FW FORM #:

FINGERPRINT ANALYSIS REPORT

SAMPLE NO. 88-10615

PHYSICAL CHARACTERISTICS:

STATE: SOLID SEMI-SOLID
 LIQUID SOLID/LIQUID

LAYERS: _____ COLOR: _____

NOT APPLICABLE

ODOR: STRONG MILD NONE

WATER MIX:

	YES	NO
GENERATION OF GASES	<input type="checkbox"/>	<input type="checkbox"/>
TEMPERATURE CHANGE	<input type="checkbox"/>	<input type="checkbox"/> ΔT
GENERATION OF EMULSION	<input type="checkbox"/>	<input type="checkbox"/>
GENERATION OF PRECIPITATE	<input type="checkbox"/>	<input type="checkbox"/>
<input type="checkbox"/> SOLUBLE <input type="checkbox"/> INSOLUBLE <input type="checkbox"/> SLIGHTLY SOLUBLE		

REACTIVE SULFIDE SCREEN:

- PASSES TEST (NON-DETECTABLE)
- FAILS TEST (DETECTABLE)
- NOT APPLICABLE

RADIOACTIVITY SCREEN:

- BACKGROUND
- > BACKGROUND

PAINT FILTER TEST:

- PASSES TEST (NO LIQUIDS DETECTED)
- FAILS TEST (FREE LIQUIDS DETECTED)
- NOT APPLICABLE

REACTIVE CYANIDE SCREEN:

- < 100 PPM
- > 100 PPM _____
- NOT APPLICABLE

FLAMMABILITY POTENTIAL

- POSITIVE
- NEGATIVE

BULK DENSITY

1.2 g/cm³

PENETROMETER

pH:

1

ACCEPTANCE STATUS:

- CONFORMING
- NON-CONFORMING
- ACCEPTED FOR DISPOSAL
- REJECTED

REASON(S) FOR REJECTION:

- OFF SPEC
- SEE SCREENS ABOVE
- OTHER

COMMENTS:

K. L. ...
LABORATORY SIGN OFF

MANAGEMENT METHOD

SPECIAL HANDLING INSTRUCTIONS _____

DESTINATION

- LANDFILL (D80) Waste Management
- DRUM BUILDING (S01)
- STABILIZATION (T21)

COORDINATES: 33-2-30 OPERATOR: ...

COMMENTS: _____



DIVISION OF SOLID AND HAZARDOUS WASTE
One Winter Street
Boston, Massachusetts 02108

Please print or type (Form designed for use on eight 12 pitch) typewriter.

UNIFORM HAZARDOUS WASTE MANIFEST		1 Generator US EPA ID No MA P 0 0 0 0 3 5 7 0 8 C 6 1 6 5		Manifest Document No MA 89 51		2 Page 1 of 1		Information in the shaded areas is not required by Federal law					
3 Generator's Name and Mailing Address Cannons Sites Group c/o Laurie Bart One Post Office Square, Boston, MA 02109						A. State Manifest Document Number MA C496265							
4 Generator's Phone (617) 482-1390						B. State Gen. ID Cardage Park, Plymouth, MA							
5 Transporter 1 Company Name Inland Pollution Control				7 US EPA ID Number MA D 9 8 2 1 9 1 1 3 1 4		C. State Trans. ID MA 89 51							
7 Transporter 2 Company Name						8 US EPA ID Number							
9 Designated Facility Name and Site Address Adams Center Sanitary Landfill, Inc. 4636 Adams Center Road Fore Hayes, IN 46006						10 US EPA ID Number IN D 0 7 8 9 1 1 1 4 6							
11 US DOT Description (Including Proper Shipping Name, Hazard Class, and ID Number)						12. Containers		13. Total Quantity		14. Unit Wt/Vol		15. Waste No.	
a. Hazardous Waste Solid, N.O.S. ORM-E NA 9189						No. 0 0 1 D T		Quantity 36360		Unit P		Waste No. MA 0	
b.													
c.													
d.													
J. Additional Descriptions for Materials Listed Above (include physical state and hazard code)						K. Handling Codes for Wastes Listed Above							
a. Oil contaminated soil						a.							
b.						b.							
c.						c.							
d.						d.							
15. Special Handling Instructions and Additional Information W.B. # 72282 In the event of accident or spill please contact Paul Connors at Inland Pollution Control (617) 843-7110 Profile #M35622 IPC Job #9364L													
16. GENERATOR'S CERTIFICATION: I hereby declare that the contents of this consignment are fully and accurately described above by proper shipping name and are classified, packed, marked and labeled, and are in all respects in proper condition for transport by highway according to applicable international and national government regulations.													
I have a large quantity of waste for which I have a program in place to reduce the volume and toxicity of waste generated to the degree I have determined to be economically practicable and that I have selected the practical method of treatment, storage, or disposal currently available to me which minimizes the present and future threat to human health and the environment. I will, in an equitable manner, have made a good faith effort to minimize my waste generation and select the best waste management method that is available to me and that is safe.													
Printed/Typed Name Paul Connors						Signature <i>Paul Connors</i>			Date 11/11/89				
17. Transporter 1 Acknowledgement of Receipt of Materials						Signature <i>Paul Connors</i>			Date 11/11/89				
Printed/Typed Name Paul Connors						Signature <i>Paul Connors</i>			Date 11/11/89				
18. Transporter 2 Acknowledgement of Receipt of Materials						Signature <i>Paul Connors</i>			Date 11/11/89				
Printed/Typed Name						Signature			Date				
19. Discrepancy Indication Space													
20. Facility Owner or Operator: Certification of receipt of hazardous materials covered by this manifest except as noted in Item 19													
Printed/Typed Name T. W. Williams						Signature <i>T. W. Williams</i>			Date 11/11/89				

In case of emergency or spill, immediately call the National Response Center (800) 424-8802.

GENERATOR

TRANSPORTER

FACILITY



ADAMS CENTER LANDFILL

4636 ADAMS CENTER ROAD
FORT WAYNE, INDIANA 46806
TELEPHONE (219) 447-5585
IND 078911146

**DISPOSAL
MEMO**

59536
CONTROL NUMBER

CUSTOMER COPY

WEIGHT
72020 LB

TIME DATE
09:58 AM 09/14/88

TRUCK
ID # 14

WORK ORDER NO. _____

1ST WT 72020 LB
RECALL 72020 LB
2ND WT 33860 LB

KEYBOARD REENTRY 14
10:34 AM 09/14/88

GENERATOR _____

GROSS 72020 LB
TARE 33860 LB
NET 38160 LB

MEMORY

SER #

WASTE _____

PROFILE NO. _____

HOUR/DATE _____

SAMPLER _____

TONS 19.00

HAUL #

TOTAL

QUANTITY _____

PURCHASE ORDER NO. _____

TRANSPORTER W. J. Brown & Sons Co. 224

SHIP DATE 9/14/88 MANIFEST NO. 3041

REC. BY TW

ADD'L NOTIF. FORM(S) ATTACHED:

YES NO

1
R
2

FINGERPRINT ANALYSIS REPORT

SAMPLE NO. 58-10105

PHYSICAL CHARACTERISTICS:

STATE: SOLID SEMI-SOLID
 LIQUID SOLID/LIQUID

LAYERS: _____ COLOR _____

NOT APPLICABLE

ODOR: STRONG MILD NONE

WATER MIX:

	YES	NO
GENERATION OF GASES	<input type="checkbox"/>	<input type="checkbox"/>
TEMPERATURE CHANGE	<input type="checkbox"/>	<input type="checkbox"/> <u>ΔT</u>
GENERATION OF EMULSION	<input type="checkbox"/>	<input type="checkbox"/>
GENERATION OF PRECIPITATE	<input type="checkbox"/>	<input type="checkbox"/>
<input type="checkbox"/> SOLUBLE <input type="checkbox"/> INSOLUBLE <input type="checkbox"/> SLIGHTLY SOLUBLE		

REACTIVE SULFIDE SCREEN:

PASSES TEST (NON-DETECTABLE)
 FAILS TEST (DETECTABLE)
 NOT APPLICABLE

RADIOACTIVITY SCREEN:

BACKGROUND
 > BACKGROUND

PAINT FILTER TEST:

PASSES TEST (NO LIQUIDS DETECTED)
 FAILS TEST (FREE LIQUIDS DETECTED)
 NOT APPLICABLE

REACTIVE CYANIDE SCREEN:

< 100 PPM
 > 100 PPM _____
 NOT APPLICABLE

FLAMMABILITY POTENTIAL

POSITIVE
 NEGATIVE

BULK DENSITY

1.2 g/cm³

PENETROMETER

pH: 6

ACCEPTANCE STATUS:

CONFORMING
 NON-CONFORMING
 ACCEPTED FOR DISPOSAL
 REJECTED

REASON(S) FOR REJECTION:

OFF SPEC
 SEE SCREENS ABOVE
 OTHER

COMMENTS:

KIM
LABORATORY SIGN OFF

MANAGEMENT METHOD

SPECIAL HANDLING INSTRUCTIONS _____

ESTIMATION:

LANDFILL (D80) W. J. Brown & Sons Co.
 DRUM BUILDING (S01)
 STABILIZATION (T21)

COORDINATES 3-10-

OPERATOR TW

COMMENTS _____



COMMONWEALTH OF MASSACHUSETTS
 DEPARTMENT OF ENVIRONMENTAL QUALITY ENGINEERING
 DIVISION OF SOLID AND HAZARDOUS WASTE
 One Winter Street
 Boston, Massachusetts 02108

Please print or type. (Form designed for use on elite (12 pitch) typewriter.)

UNIFORM HAZARDOUS WASTE MANIFEST		1. Generator US EPA ID No MA90000035708C6171		Manifest Document No. 6171		2. Page 1 of 1		Information in the shaded areas is not required by Federal law.						
3. Generator's Name and Mailing Address CANNON SITES GROUP C/O LAURIE BURT ONE POST OFFICE SQUARE, BOSTON, MA 02109						A. State Manifest Document Number MA C496171								
4. Generator's Phone: 617 482-1390						B. State Gen. ID CORDAGE PK., PLYMOUTH, MA								
5. Transporter 1 Company Name INLAND POLLUTION CONTROL			6. US EPA ID Number MAAD982191314			C. State Trans. ID MAK937000000								
7. Transporter 2 Company Name						D. Transporter's Phone: 617 843-7110								
9. Designated Facility Name and Site Address ADAMS CENTER SANITARY LANDFILL, INC. 4636 ADAMS CENTER ROAD FORT WAYNE, IN 46806						E. State Trans. ID								
10. US EPA ID Number IND078911146						F. Transporter's Phone ()								
11. US DOT Description (Including Proper Shipping Name, Hazard Class, and ID Number)						12. Containers No. Type		13. Total Quantity		14. Unit Wt/Vol		15. Waste No.		
a. HAZARDOUS WASTE SOLID, N.O.S. NA 9189						0 0 1 DIT		25960		P		MA101		
b.														
c.														
d.														
J. Additional Descriptions for Materials Listed Above (include physical state and hazard code.)						K. Handling Codes for Wastes Listed Above								
a. OIL CONTAMINATED SOIL						c.								
b.						d.								
15. Special Handling Instructions and Additional Information IN THE EVENT OF ACCIDENT OR SPILL, PLEASE CONTACT PAUL CONNORS @ INLAND POLLUTION CONTROL, INC. @ (617)843-7110. IPC JOB#9364M PROFILE# H35622 W.O.# 72283														
16. GENERATOR'S CERTIFICATION: I hereby declare that the contents of this consignment are fully and accurately described above by proper shipping name and are classified, packed, marked, and labeled, and are in all respects in proper condition for transport by highway according to applicable international and national government regulations.														
If I am a large quantity generator, I certify that I have a program in place to reduce the volume and toxicity of waste generated to the degree I have determined to be economically practicable and that I have selected the practicable method of treatment, storage, or disposal currently available to me which minimizes the present and future threat to human health and the environment. OR, if I am a small quantity generator, I have made a good faith effort to minimize my waste generation and select the best waste management method that is available to me and that I can afford.														
Printed/Typed Name Robert T. ...					Signature <i>Robert T. ...</i>					Date 1/7/84				
17. Transporter 1 Acknowledgement of Receipt of Materials														
Printed/Typed Name Robert ...					Signature <i>Robert ...</i>					Date 1/7/84				
18. Transporter 2 Acknowledgement of Receipt of Materials														
Printed/Typed Name					Signature					Date				
19. Discrepancy Indication Space														
20. Facility Owner or Operator Certification of receipt of hazardous materials covered by this manifest except as noted in Item 19.														
Printed/Typed Name ...					Signature <i>...</i>					Date 1/7/84				

In case of emergency or spill, immediately call the National Response Center (800) 424-8802.



ADAMS CENTER LANDFILL

4636 ADAMS CENTER ROAD
FORT WAYNE, INDIANA 46806
TELEPHONE (219) 447-5585
IND 078911146

**DISPOSAL
MEMO**

59690

CONTROL NUMBER

WEIGHT TIME DATE TRUCK ID #

CUSTOMER COPY

1ST WT 68120 LB 12:27 PM 09/14/88 11

WORK ORDER NO. _____

RECALL 68120 LB KEYBOARD REENTRY
2ND WT 40290 LB 01:12 PM 09/14/88 MEMORY SER #

GENERATOR _____

WASTE _____

GROSS 68120 LB
TARE 40290 LB
NET 27840 LB

PROFILE NO. _____

HOUR/DATE _____

SAMPLER _____

TONS 13.92 \$ HAUL # TOTAL 1
R
2

QUANTITY _____

PURCHASE ORDER NO. _____

ADD'L NOTIF. FORM(S) ATTACHED:
 YES NO

TRANSPORTER _____

SHIP DATE _____ MANIFEST NO. _____

REC. BY _____ FORM # _____

FINGERPRINT ANALYSIS REPORT

SAMPLE NO. 88-10615

PHYSICAL CHARACTERISTICS:

STATE: SOLID SEMI-SOLID
 LIQUID SOLID/LIQUID

LAYERS: _____ COLOR _____

NOT APPLICABLE

ODOR: STRONG MILD NONE

WATER MIX:

GENERATION OF GASES YES NO
TEMPERATURE CHANGE YES NO ΔT
GENERATION OF EMULSION YES NO
GENERATION OF PRECIPITATE YES NO
 SOLUBLE INSOLUBLE SLIGHTLY SOLUBLE

ACTIVE SULFIDE SCREEN:

PASSES TEST (NON-DETECTABLE)
 FAILS TEST (DETECTABLE)
 NOT APPLICABLE

RADIOACTIVITY SCREEN:

BACKGROUND
 > BACKGROUND

PAINT FILTER TEST:

PASSES TEST (NO LIQUIDS DETECTED)
 FAILS TEST (FREE LIQUIDS DETECTED)
 NOT APPLICABLE

ACTIVE CYANIDE SCREEN:

< 100 PPM
 > 100 PPM _____
 NOT APPLICABLE

FLAMMABILITY POTENTIAL

POSITIVE
 NEGATIVE

BULK DENSITY

1.2 g/cm³

PENETROMETER

pH:

ACCEPTANCE STATUS:

CONFORMING
 NON-CONFORMING
 ACCEPTED FOR DISPOSAL
 REJECTED

REASON(S) FOR REJECTION:

OFF SPEC
 SEE SCREENS ABOVE
 OTHER

COMMENTS:

K. J.
LABORATORY SIGN OFF

MANAGEMENT METHOD

SPECIAL HANDLING INSTRUCTIONS _____

DIRECTION:

LANDFILL (D80) *landfill*
 DRUM BUILDING (S01)
 STABILIZATION (T21)

COORDINATES: _____ OPERATOR: _____

COMMENTS _____



COMMONWEALTH OF MASSACHUSETTS
 DEPARTMENT OF ENVIRONMENTAL QUALITY ENGINEERING
 DIVISION OF SOLID AND HAZARDOUS WASTE
 One Winter Street
 Boston, Massachusetts 02108

Please print or type. (Form designed for use on elite 12 pin (hi) typewriter.)

In case of emergency or spill, immediately call the National Response Center (800) 424-8802

UNIFORM HAZARDOUS WASTE MANIFEST		1. Generator US EPA ID No MA P 0 0 0 0 3 5 7 0 8 0 6 1 7 2		2. Page 1 of 1		Information in the shaded areas is not required by Federal law	
3. Generator's Name and Mailing Address CANNONS SITES GROUP C/O LAURIE BURT ONE POST OFFICE SQUARE, BOSTON, MA 02109				A. State Manifest Document Number MA C496172		B. State Gen. ID CORDAGE PK., PLYMOUTH, MA	
4. Generator's Phone 617 482-1390		5. Transporter 1 Company Name INLAND POLLUTION CONTROL, INC		6. US EPA ID Number MA ID 9 8 2 1 9 1 3 1 4		C. State Trans. ID MA 89531000000	
7. Transporter 2 Company Name		8. US EPA ID Number		D. Transporter's Phone (617) 843-7110		E. State Trans. ID	
9. Designated Facility Name and Site Address ADAMS CENTER SANITARY LANDFILL, INC 4636 ADAMS CENTER ROAD FORT WAYNE, IN 46806				10. US EPA ID Number IND 0 7 8 9 1 1 1 4 6		F. Transporter's Phone	
				G. State Facility's ID Not Required		H. Facility's Phone (219) 447-5585	
11. US DOT Description (Including Proper Shipping Name, Hazard Class, and ID Number)				12. Containers		13. Total Quantity	
a. HAZARDOUS WASTE SOLID, N.O.S. ORN-E				No. Type		Unit Wt/Vol	
MA 9189				0 0 1 C M		23200 P	
b.							
c.							
d.							
J. Additional Descriptions for Materials Listed Above (include physical state and hazard code.)				K. Handling Codes for Wastes Listed Above			
a. OIL CONTAMINATED SOIL				a.			
b.				b.			
c.				c.			
d.				d.			
15. Special Handling Instructions and Additional Information IN THE EVENT OF ACCIDENT OR SPILL, PLEASE CONTACT PAUL CONNORS @ INLAND POLLUTION CONTROL, INC. @ (617)843-7110. IPC JOB#936AN PROFILE# MS5622 W.O.# 7228A							
16. GENERATOR'S CERTIFICATION: I hereby declare that the contents of this consignment are fully and accurately described above by proper shipping name and are classified, packed, marked, and labeled, and are in all respects in proper condition for transport by highway according to applicable international and national government regulations.							
If I am a large quantity generator, I certify that I have a program in place to reduce the volume and toxicity of waste generated to the degree I have determined to be economically practicable and that I have selected the practicable method of treatment, storage, or disposal currently available to me which minimizes the present and future threat to human health and the environment. OR, if I am a small quantity generator, I have made a good faith effort to minimize my waste generation and select the best waste management method that is available to me and that I can afford.							
Printed/Typed Name R. T. Taylor				Signature <i>[Signature]</i>		Date 9/14/88	
17. Transporter 1 Acknowledgment of Receipt of Materials				Signature David Broofski		Date 09/14/88	
Printed/Typed Name David Broofski				Signature <i>[Signature]</i>		Date 09/14/88	
18. Transporter 2 Acknowledgment of Receipt of Materials				Signature		Date	
Printed/Typed Name				Signature		Date	
19. Discrepancy Indication Space							
20. Facility Owner or Operator: Certification of receipt of hazardous materials covered by this manifest except as noted in Item 19.							
Printed/Typed Name W. O. J. T...				Signature <i>[Signature]</i>		Date 09/14/88	



ADAMS CENTER LANDFILL
 4636 ADAMS CENTER ROAD
 FORT WAYNE, INDIANA 46806
 TELEPHONE (219) 447-5585
 IND 078911146

**DISPOSAL
MEMO**

**03003
CONTROL NUMBER**

CUSTOMER COPY

WEIGHT

TIME

DATE

TRUCK
LD #

73360 LB

12:23 PM 09/14/88

9

WORK ORDER NO. _____

1ST WT

RECALL

2ND WT

73360 LB

43540 LB

GROSS

TARE

NET

73360 LB

43540 LB

TONS

33820 LB

11.91

KEYBOARD REENTRY
01:07 PM 09/14/88

SER #

HAUL #

TOTAL

1
R
2

QUANTITY _____

PURCHASE ORDER NO. _____

TRANSPORTER _____

SHIP DATE _____ MANIFEST NO. _____

ADD'L NOTIF. FORM(S) ATTACHED:

YES NO

REC. BY _____ FORM # _____

FINGERPRINT ANALYSIS REPORT

SAMPLE NO. 88-10615

PHYSICAL CHARACTERISTICS:

STATE: SOLID SEMI-SOLID
 LIQUID SOLID/LIQUID

LAYERS: _____ COLOR _____

NOT APPLICABLE

ODOR: STRONG MILD NONE

WATER MIX:

	YES	NO
GENERATION OF GASES	<input type="checkbox"/>	<input type="checkbox"/>
TEMPERATURE CHANGE	<input type="checkbox"/>	<input checked="" type="checkbox"/> ΔT
GENERATION OF EMULSION	<input type="checkbox"/>	<input type="checkbox"/>
GENERATION OF PRECIPITATE	<input type="checkbox"/>	<input type="checkbox"/>
<input type="checkbox"/> SOLUBLE <input type="checkbox"/> INSOLUBLE <input type="checkbox"/> SLIGHTLY SOLUBLE		

EACTIVE SULFIDE SCREEN:

PASSES TEST (NON-DETECTABLE)
 FAILS TEST (DETECTABLE)
 NOT APPLICABLE

RADIOACTIVITY SCREEN:

BACKGROUND
 > BACKGROUND

PAINT FILTER TEST:

PASSES TEST (NO LIQUIDS DETECTED)
 FAILS TEST (FREE LIQUIDS DETECTED)
 NOT APPLICABLE

REACTIVE CYANIDE SCREEN:

< 100 PPM
 > 100 PPM _____
 NOT APPLICABLE

FLAMMABILITY POTENTIAL

POSITIVE
 NEGATIVE

BULK DENSITY

1.2 g/cm³

PENETROMETER

pH:

6.0

ACCEPTANCE STATUS:

CONFORMING
 NON-CONFORMING
 ACCEPTED FOR DISPOSAL
 REJECTED

REASON(S) FOR REJECTION:

OFF SPEC
 SEE SCREENS ABOVE
 OTHER

COMMENTS:

LABORATORY SIGN OFF

MANAGEMENT METHOD

SPECIAL HANDLING INSTRUCTIONS: _____

DESTINATION:

LANDFILL (D80) ADAMS CENTER
 DRUM BUILDING (S01)
 STABILIZATION (T21)

COORDINATES _____ OPERATOR GM

COMMENTS _____

APPENDIX D

SOIL EXCAVATION RECORDS

SOIL EXCAVATION LOG
 for soil containing
 Volatile Organic Compounds (VOCs)

Site Name CANNONS ENGINEERING Date 9-12-88
 Location _____ Completed by R.A. YOUNG
 Weather COOL & CLEAR Signature R.A. Young
 Date _____
 QAO Signature M.M. Young
 Date 12/2/88

Air Monitoring Device HNU
 Serial No. 41240
 Instrument Standard 10.67
 Instrument Sensitivity _____

Time	VOC (ppm)	Receiving Vehicle Registration	Observations	QA
LOAD #1 1 9:05	1-2	86409Z	MATERIAL FULL	
2. 9:06	.2		OF BLACKTOP	
3.	1.4		+ SAND. AS OF 9:10	
4.	1.2		NO DISTINCT ODOR	
5.	.6			

CONTINUOUS MONITORING AROUND EXCAVATION

TIME	Voc (ppm)	LOCATION;
9:00-9:15	0-1	SOUTH SIDE OF EXCAV.
	1.2	
	.2	
	.2	
	.4	

M.M. Young 9/12/88

2

SOIL EXCAVATION LOG
for soil containing
Volatile Organic Compounds (VOCs)

Site Name CANNON ENGINEERING Date 9-12-88
 Location _____ Completed by R.A. Young
 Weather GOOD Signature R.A. Young
 Date _____
 QAO Signature [Signature]
 Date 12/2/88

Air Monitoring Device HNU
 Serial No. 41240
 Instrument Standard 10.67
 Instrument Sensitivity _____

Time	VOC (ppm)	Receiving Vehicle Registration	Observations	QA
1 9:26	.8	86416Z	MATERIAL SANDY	
2 9:29	.6		W/LARGE PIECES	
3 9:31	1.0		OF BLACKTOP.	
4 9:33	.8			
5 9:33	1.0			

CONTINUOUS MONITORING;

9:26 - TIME	VOC (PPM)	LOCATION:
	.6	SOUTH END OF
	.4	EXCAVATION
	.4	
	.4	
	.8	

MNH 9/12/88

#3

SOIL EXCAVATION LOG
for soil containing
Volatile Organic Compounds (VOCs)

Site Name CANNON ENGINEERING Date 9-12-88
 Location _____ Completed by R.A. YOUNG
 Weather FAIR Signature [Signature]
 Date _____
 Air Monitoring Device HNU QAO Signature [Signature]
 Serial No. _____ Date 12/7/88
 Instrument Standard _____
 Instrument Sensitivity _____

Time	VOC (ppm)	Receiving Vehicle Registration	Observations	QA
1. 9:45	.6	86435Z	SOIL REMAINS SAME	
2. 9:48	.6		APPROX. DEPTH 4'	
3. 9:50	.8			
4. 9:54	4			
5. 10:01	.2			

CONTINUOUS MONITORING;

9:45 .2 LOCATION: SOUTH END
 .2 OF TANK 1
 .4
 .2
 .2

MAH 9/2/88

#4

SOIL EXCAVATION LOG
for soil containing
Volatile Organic Compounds (VOCs)

Site Name CANNON ENG.
Location _____
Weather FAIR

Date 9-12-88
Completed by R.A. YOUNG
Signature _____

Date _____
QA0 Signature [Signature]
Date 12/7/88

Air Monitoring Device HNU
Serial No. _____
Instrument Standard _____
Instrument Sensitivity _____

Time	VOC (ppm)	Receiving Vehicle Registration	Observations	QA
		75764B	DIGGING WILL	
10:16	1.2		STOP ONCE WE	
10:18	1.6		REACH (SLAG)	
10:20	1.0		THE CRUSHED BRICK	
10:21			AREA PER EPA	
			RPM	

[Signature]

CONTINUOUS MONITORING

9:20	.2			
	.2			
	.2			
	.2			

#5

SOIL EXCAVATION LOG
for soil containing
Volatile Organic Compounds (VOCs)

Site Name CANNON ENGINEERING Date 9-12-88
 Location _____ Completed by R.S. YOUNG
 Weather _____ Signature [Signature]
 Date _____
 QAO Signature [Signature]
 Date 12/7/88

Air Monitoring Device HNU
 Serial No. 41240
 Instrument Standard _____
 Instrument Sensitivity _____

Time	VOC (ppm)	Receiving Vehicle Registration	Observations	QA
10:29	.4	86431Z	MATERIAL VERY	
10:30	1.0		BONEY (CONTAINS	
10:32	1.8		BRICK, WHOLE E	
10:34	.2		CRUSHED, STONE	
10:36	1.0		& BLACKTOP)	

CONTINUOUS MONITORING;
 TIME 10:29-9 .2
 0.0
 .2
 .2
 0.0

[Signature] 9/12/88

#6

SOIL EXCAVATION LOG
for soil containing
Volatile Organic Compounds (VOCs)

Site Name CANNON ENGINEERING
Location _____
Weather FAIR

Date 9-12-88
Completed by R.A. Young
Signature _____

Air Monitoring Device HNU
Serial No. _____
Instrument Standard _____
Instrument Sensitivity _____

QAO Signature [Signature]
Date 12/7/87

Time	VOC (ppm)	Receiving Vehicle Registration	Observations	QA
			MATERIAL SEEMS	
10:51	3	86426Z	TO CHANGE AS	
10:54	1.0		WE PROGRESS	
10:56	1.2		NORTH. IT CHANGES	
11:00	.2		TO SAND + MHA ⁹¹	
11:01	.2		GRAVEL	

CONTINUOUS MONITORING;

Time	PPM
10:45	1.0
	.8
	1.7
	1.0
	.2

#7

SOIL EXCAVATION LOG
for soil containing
Volatile Organic Compounds (VOCs)

Site Name CANNON ENGINEERING
Location _____
Weather Good

Date 9-12-88
Completed by R. Young
Signature [Signature]
Date _____

Air Monitoring Device HNU
Serial No. 41240
Instrument Standard _____
Instrument Sensitivity _____

QAO Signature [Signature]
Date 12/7/89

Time	VOC (ppm)	Receiving Vehicle Registration	Observations	QA
1. 11:40	3	44580C	SAME MATERIAL	
2. 11:41	1.4			
3. 11:41	6			
4. 11:42	4			
5. 11:42	5			
CONTINUOUS MONITORING:				
11:24	.4		same area	
11:40	.2			
11:43	.4			
11:50	4.0			

MWA 9/12/88

#8

SOIL EXCAVATION LOG
for soil containing
Volatile Organic Compounds (VOCs)

Site Name CANNON ENGINEERING
Location _____
Weather FAIR

Date 9-12-88
Completed by R.A. Young
Signature R.A. Young

QAO Signature [Signature]
Date 10/7/88

Air Monitoring Device HNU
Serial No. 41240
Instrument Standard _____
Instrument Sensitivity _____

Time	VOC (ppm)	Receiving Vehicle Registration	Observations	QA
13:29	1.0	44561C	SAME MAT'L	
13:36	1.0			
13:37	2.0			
13:40	2.2			
13:42				

CONTINUOUS MONITORING

TIME	VOC
13:29	0 PPM
	.8
	.6
	.2

#9

SOIL EXCAVATION LOG
for soil containing
Volatile Organic Compounds (VOCs)

Site Name CANNON ENG.
Location _____
Weather FAIR

Date 9-12-88
Completed by R.A. Young
Signature [Signature]
Date _____

Air Monitoring Device HNU
Serial No. 41240
Instrument Standard _____
Instrument Sensitivity _____

QAO Signature [Signature]
Date 12/2/88

Time	VOC (ppm)	Receiving Vehicle Registration	Observations	QA
13:40	0	86430Z	FILLED WITH SAND AREA	
13:41	.8		N. OF TANK 1	
13:42	.6			
13:45	.4			
13:46	.2			

Continuous Monitoring;
 TIME: 13:40 VOC (ppm)
 .2
 .4
 .4
 .4

#10

SOIL EXCAVATION LOG
for soil containing
Volatile Organic Compounds (VOCs)

Site Name CANNON ENG.
Location _____
Weather FAIR

Date 9-12-88
Completed by R.A. YOUNG
Signature [Signature]

QAO Signature [Signature]
Date 12/1/88

Air Monitoring Device HNU
Serial No. 41240
Instrument Standard _____
Instrument Sensitivity _____

Time	VOC (ppm)	Receiving Vehicle Registration	Observations	QA
13:55	.2	44562C	MATERIAL IS	
14:12	0		DRYING OUT DUE	
14:16	.4		TO HIGH TEMP.	
14:18	0			
14:19	.2			

CONTINUOUS MONITORING

TIME	VOC	Observations
13:55	.2	loading is being done, atop of the hill, due to truck inability to maneuver in pits
	0	
	0	
	.2	

#11

SOIL EXCAVATION LOG
for soil containing
Volatile Organic Compounds (VOCs)

Site Name CAUNON ENG.
Location _____
Weather FAIR

Date 9-17-88
Completed by R.A. YOUNG
Signature [Signature]
Date _____
QAO Signature [Signature]
Date 10/7/88

Air Monitoring Device _____
Serial No. _____
Instrument Standard _____
Instrument Sensitivity _____

Time	VOC (ppm)	Receiving Vehicle Registration	Observations	QA
14:30	2.0	8951 MA	SAME	
14:32	.2			
14:32	.4			
14:33	.2			
14:36	.2			

Continuous Monitoring

TIME	VOC	
14:30	—	AS THE JOB NEARS
#	.2	COMPLETION THE VOC'S
	—	ARE DECLINING
	—	
	.2	

#12

SOIL EXCAVATION LOG
for soil containing
Volatile Organic Compounds (VOCs)

Site Name CANNON ENGINEERING Date 9-12-88
 Location _____ Completed by R.A. Young
 Weather SUNNY Signature RAJ
 Date _____
 QAO Signature M. J. Hardy
 Date 10/9/88

Air Monitoring Device HNU
 Serial No. 41240
 Instrument Standard _____
 Instrument Sensitivity _____

Time	VOC (ppm)	Receiving Vehicle Registration	Observations	QA
15:05	.2	8935 MA	THE AREA IS	
15:10	.4		TOTALLY DUG	
15:11	.2		AND STOCKPILED	
15:12	.2			
15:15	.2			
CONTINUOUS MONITORING;				
TIME				
15:05	—		NO SIGNIFICANT	
	.2		READINGS	
	—			
	—			
	—			
	—			

#13

SOIL EXCAVATION LOG
for soil containing
Volatile Organic Compounds (VOCs)

Site Name CAUNON ENGINEERING
Location _____
Weather WARM

Date 9-12-88
Completed by R.A. YOUNG
Signature [Signature]

Date _____
QAO Signature [Signature]
Date 12/9/88

Air Monitoring Device HANU
Serial No. 41240
Instrument Standard _____
Instrument Sensitivity _____

Time	VOC (ppm)	Receiving Vehicle Registration	Observations	QA
15:53	0	8953 MA	NO READINGS	
15:55	0		REGISTERING	
15:56	0			
16:00	0			
16:01	0			

CONTINUOUS MONIT.

15:53 NO READINGS
AROUND WORK
AREA

#14

SOIL EXCAVATION LOG
for soil containing
Volatile Organic Compounds (VOCs)

Site Name CANNON ENGINEERING
Location _____
Weather _____

Date 9-12-88
Completed by R.A. YOUNG
Signature [Signature]
Date _____
QAO Signature [Signature]
Date 9/17/88

Air Monitoring Device HNU
Serial No. 41240
Instrument Standard _____
Instrument Sensitivity _____

Time	VOC (ppm)	Receiving Vehicle Registration	Observations	QA
16:15	0	8937 MA	LAST LOAD	
16:16	0			
16:17	0			
16:18	.4			
16:20	.6			

CONTINUOUS MONIT:
NO READINGS IN AREA

APPENDIX E

EQUIPMENT CALIBRATION LOG

CALIBRATION LOG
HNU Photoionization Device, Model P1-101

Document No. CEC/PH-FL5
Page 1 of 2

Instrument HNU
Serial No. 41240

Lamp 10.2
Span Setting 9.8
Calibration Temperature 70°

Date 9-~~12~~¹¹-88
Time 7:00
User R.A. YOUNG

Standard Introduced 10.67
Meter Response (parts per million [ppm]) 11.2

Comments (See Summary of Calibration procedures, attached)

User Signature R.A. Young Date 9-11-88
QAO Signature [Signature] Date 12/15/88

See Deficiency Report -01

APPENDIX F

PHOTOGRAPHS AND PHOTOLOGS

PHOTOGRAPH LOG

Project Name: Cannon's Engineering, Plymouth, MA
 Project No.: 9364

FILM Roll	Frame	DATE	TIME (hours)	PHOTOGRAPHER	PHOTO NUMBER	DESCRIPTION
1	12	9/12/88	8:45 am	S.L. Marland	12	Windsock
"	13	"	8:55 am	"	13	Windsock, Byron Long
"	14	"	9:56 am	"	14	Loading third dump trailer
"	15	"	"	"	15	"
"	16	"	10:00 am	"	16	Digging in Tank 1 area
"	17	"	"	"	17	Hitachi Excavator and Operator
"	18	"	"	"	18	Bob Young inspecting soil
"	19	"	10:06 am	"	19	Decon 3rd load
"	20	"	"	"	20	"
"	21	"	11:25 am	"	21	House keep Berm 3
"	22	"	"	"	22	"
"	23	"	"	"	23	Load house keeping
"	24	"	2:15 pm	"	24	Backhoe and Operator

PHOTOGRAPH LOG

Project Name: Cannon's Engineering, Plymouth, MA
 Project No.: 9364

FILM Roll	Frame	DATE	TIME (hours)	PHOTOGRAPHER	PHOTO NUMBER	DESCRIPTION
1	1	9/12/88	8:35 am	S.L. Marland	1	Inside Tank 1 berm from west to east facing south
"	2	"	"	"	2	"
"	3	"	"	"	3	"
"	4	"	"	"	4	"
"	5	"	"	"	5	On top of Tank 1 berm facing west. Shots from north to south access road from north into Tank 2 berm dike between berms.
"	6	"	"	"	6	"
"	7	"	"	"	7	"
"	8	"	"	"	8	"
"	9	"	"	"	9	"
"	10	"	"	"	10	"
"	11	"	8:45 am	"	11	"

PHOTOGRAPH LOG

Project Name: Cannon's Engineering, Plymouth, MA
 Project No.: 9364

FILM Roll	Frame	DATE	TIME (hours)	PHOTOGRAPHER	PHOTO NUMBER	DESCRIPTION
1	25	9/12/88	2:15 pm	S.L. Marland	25	Inside berm 1
2	1	"	2:40 pm	"	1	llth load exiting Berm 2
"	2	"	"	"	2	"
"	3	"	"	"	3	llth load on decon pad
"	4	9/13/88	9:15 am	"	4	Berm 3 after house cleaning
"	5	"	"	"	5	"
"	6	"	"	"	6	Berm 2 after house cleaning
"	7	"	"	"	7	Berm 1 sampling of excavated area
"	8	"	10:00 am	"	8	Clean fill begin
"	9	"	"	"	9	Add to Berm 3

PHOTOGRAPH LOG

Project Name: Cannon's Engineering, Plymouth, MA
 Project No.: 9364

FILM Roll	Frame	DATE	TIME (hours)	PHOTOGRAPHER	PHOTO NUMBER	DESCRIPTION
2	11	9/12/88	2:15 pm	S.L. Marland	11	Fill put in place Berm 3
"	12	"	"	"	12	Piles of fill for Berm 1
"	13	9/13/88	1:30 pm	"	13	Berm 3 completely filled
"	14	"	"	"	14	"
"	15	"	"	"	15	Fill in excavation area of berm 1
"	16	"	"	"	16	"
"	17	"	1:50 pm	"	17	Fill in berm 1 being put in place
"	18	"	"	"	18	Berm 1 completely filled
"	19	"	"	"	19	"
"	20	"	3:00 pm	"	20	"
"	21	"	3:15 pm	"	21	Fill in berm 2 being placed

PHOTOGRAPH LOG

Project Name: Cannon's Engineering, Plymouth, MA
Project No.: 9364

FILM Roll	Frame	DATE	TIME (hours)	PHOTOGRAPHER	PHOTO NUMBER	DESCRIPTION
2	22	9/13/88	3:15 pm	S.L. Marland	22	Fill in berm 2 being spread
"	23	"	4:10 pm	"	23	Placing fill in berm 2
"	24	"	"	"	24	Berm 2 all done
"	25	"	4:10 pm	"	25	"

24

Roll 1

1

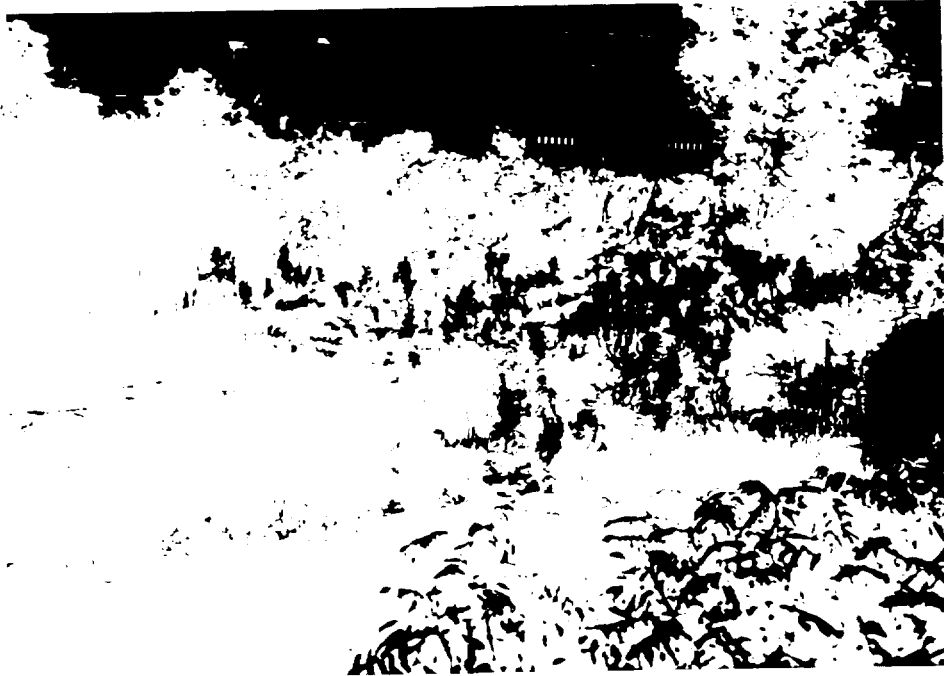


2



3





5

6

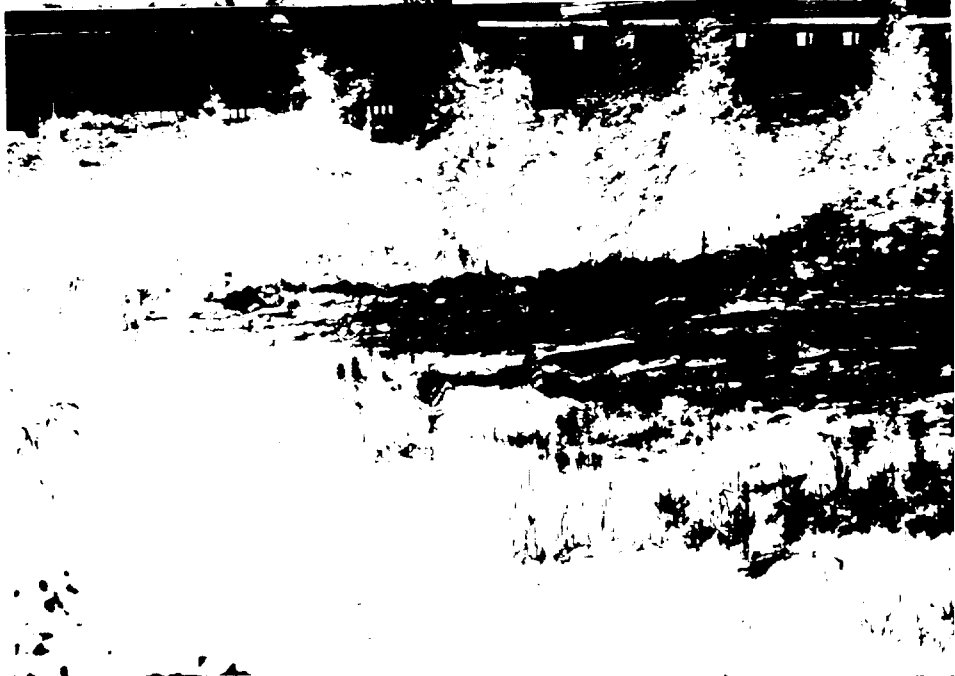


7

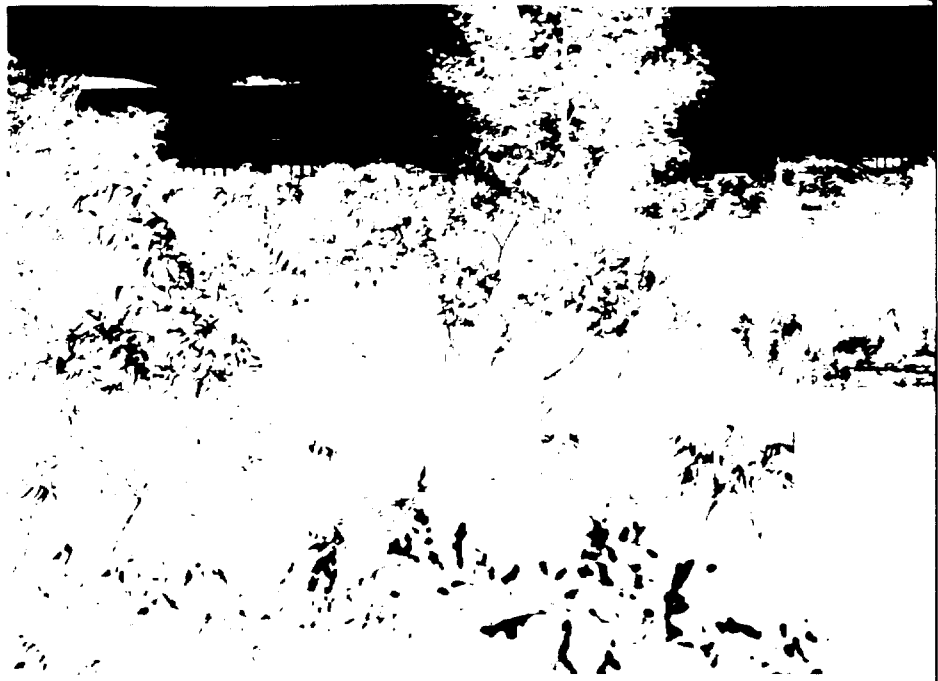


8

9



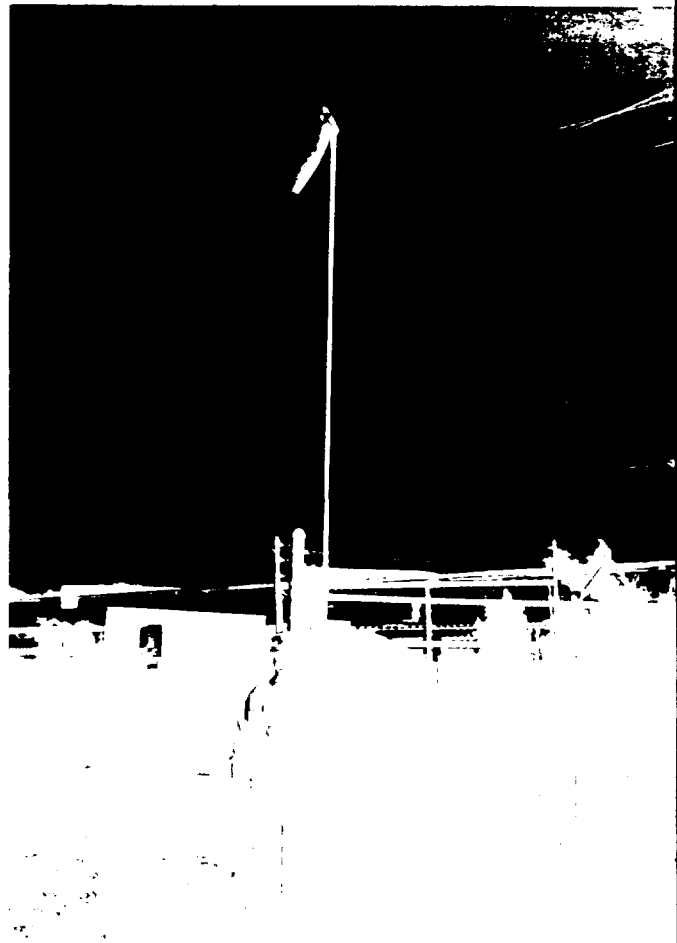
10



12



13



14



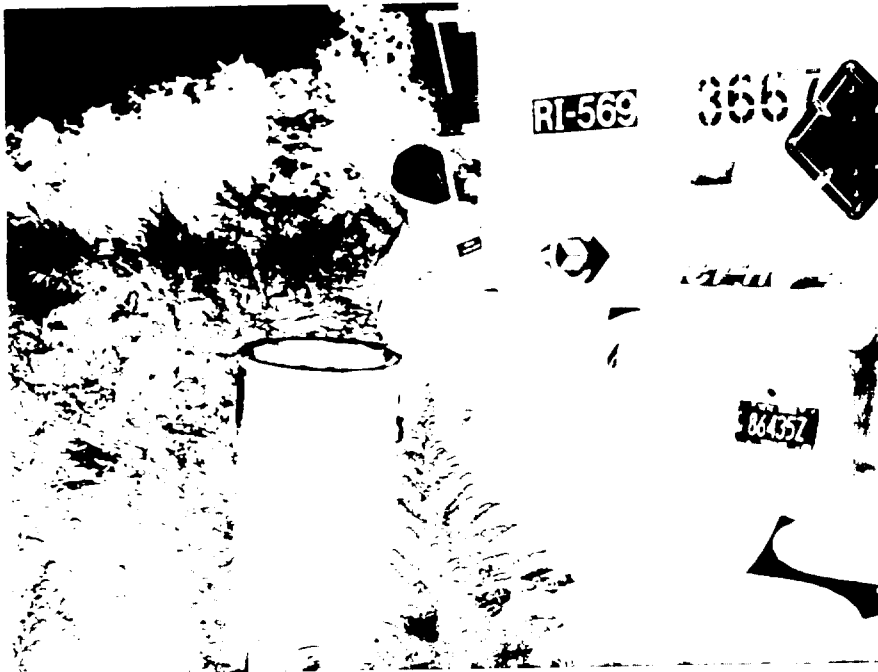
15



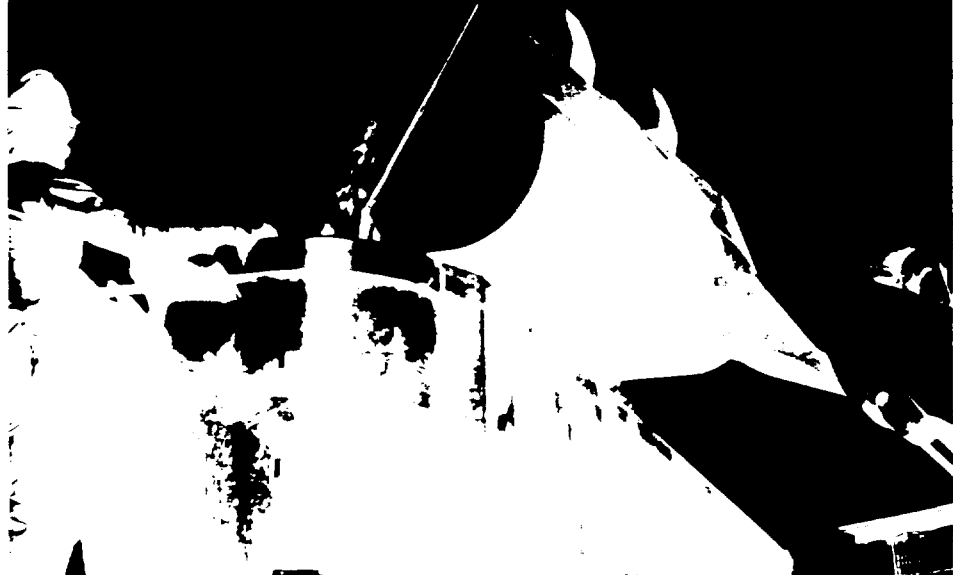
16



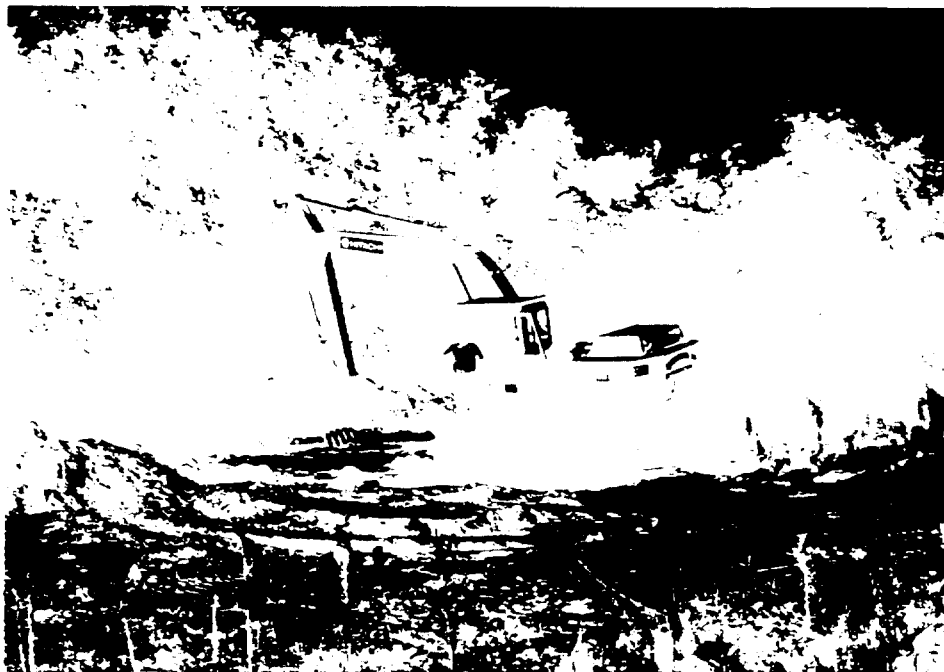




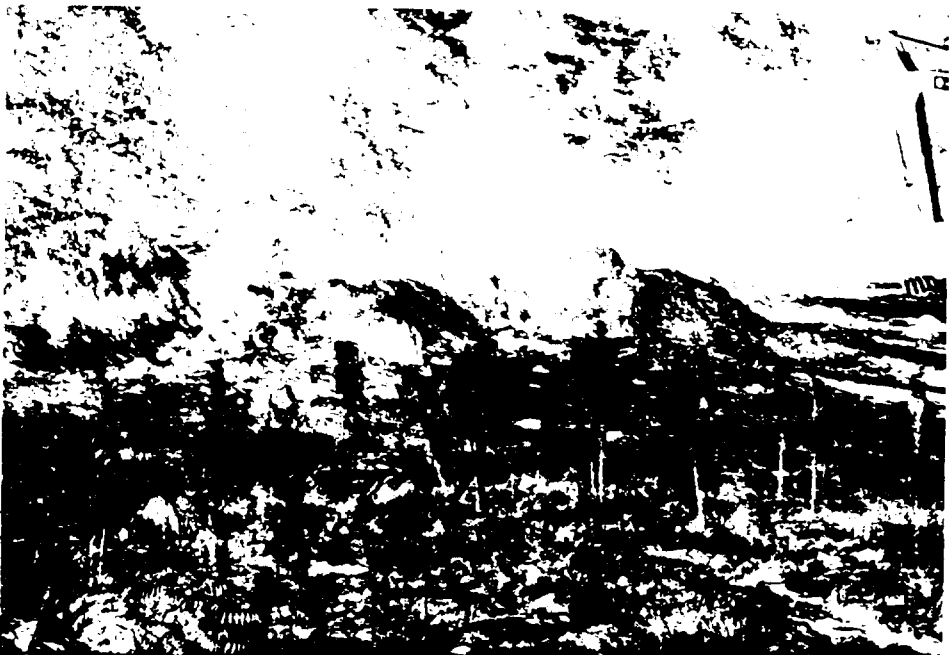
23



24



25





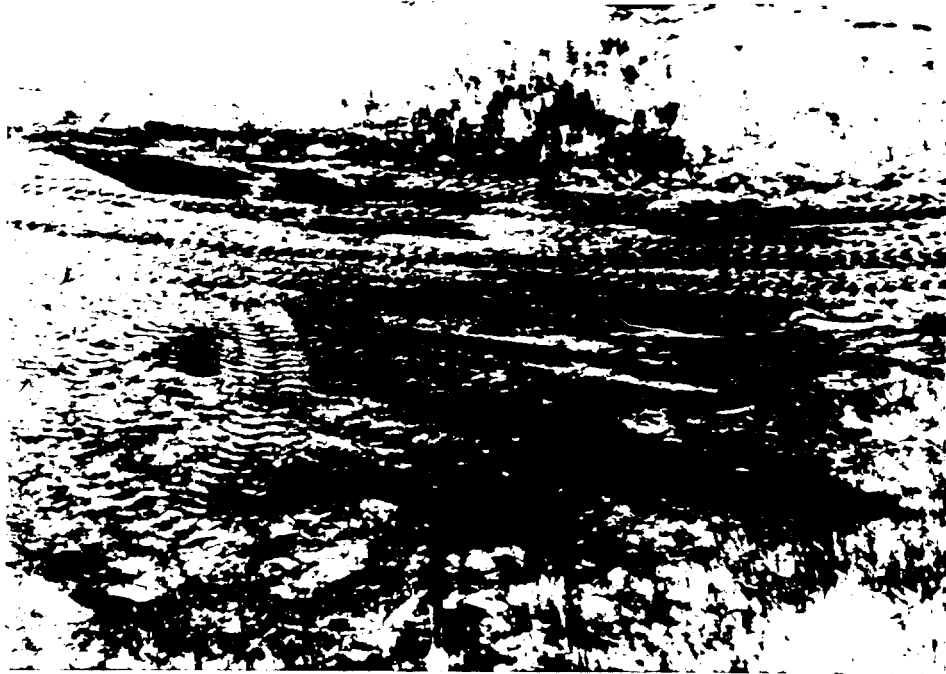
3

Roll 2

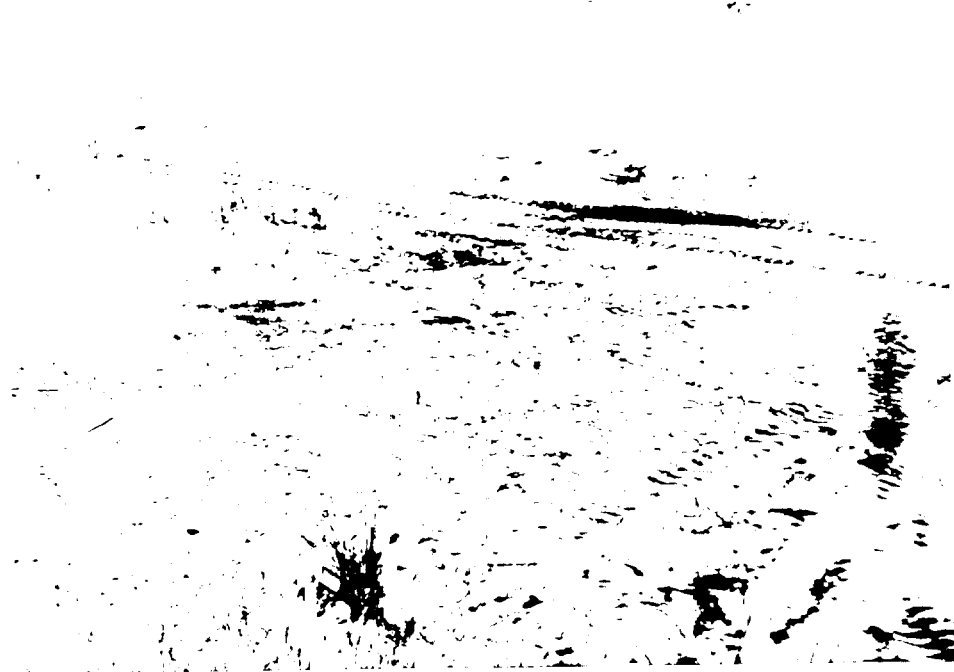
4



5



6

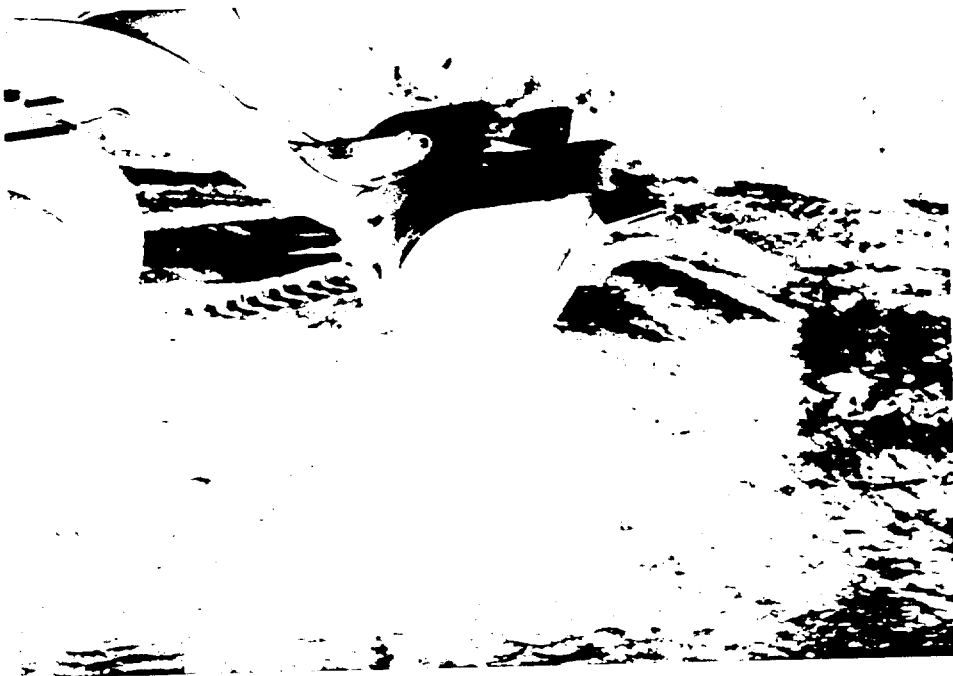


6





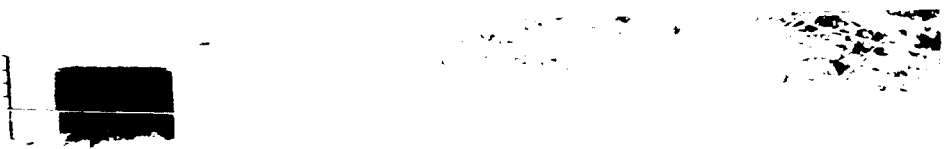
8



9



13



11



12



15



16



17



18



19



20





21

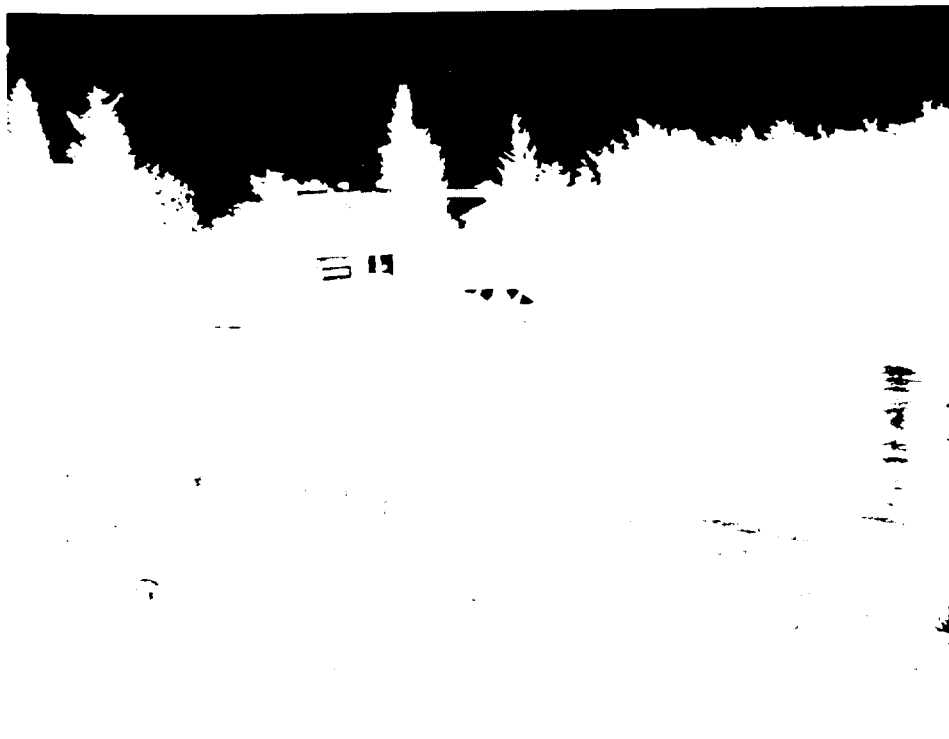
22



23



22



24

