



**PESTANA**  
**PORTO COVO**  
VILLAGE  
PORTUGAL



**In the heart of the Alentejo Coast.**



**Pestana Porto Covo Village**

## **A charming bridge between the countryside and the sea.**

The picturesque village of Porto Covo is located in the South West Alentejo region and Costa Vicentina natural park.

It is an increasingly sought after destination, known for its authenticity, its history and nature and is considered a gold standard of sustainability.





Pestana Porto Covo Village lies in the heart of the village, 400m from the beach. It is very close to the local market and the lively Largo Marquês de Pombal.

With a huge variety of beautiful and pristine beaches along the Alentejo Coast, this is the perfect getaway destination for anyone looking to live in a typical Alentejo village, bathed by the sea.



## Pestana Porto Covo Village

A village inside the charming Village of Porto Covo. The complex consists of a set of tourist apartments and is part of a private condominium.

**Prices from: 450.000€**



'This set of apartments was designed in order to integrate perfectly into the context of this Alentejo fishing village - with low volume, white walls and large glass planes that incorporate the private gardens, common to the houses.

The interiors favor natural materials, such as wood and natural elements, typical of the beach experience on the Alentejo coast.'

- Located in the heart of Porto Covo, just 400m from the beach.
- 174 tourist accommodation units, each with a private pool.
- Different property typologies.

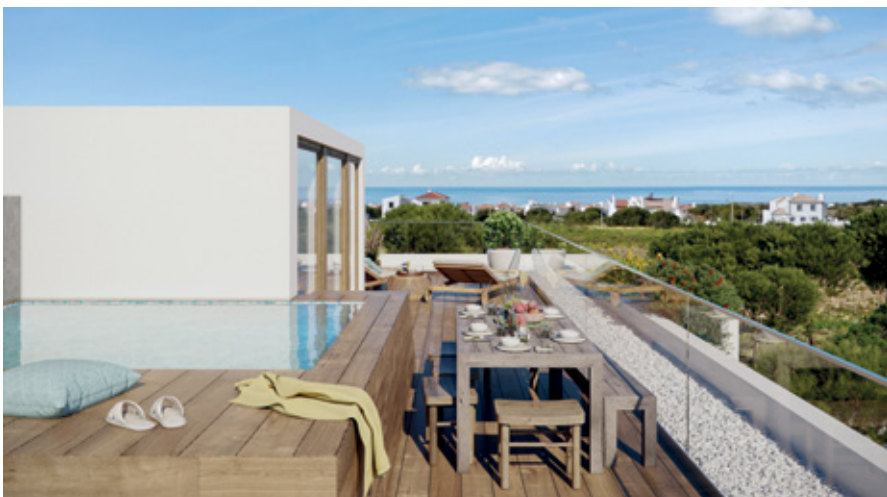


# Architecture

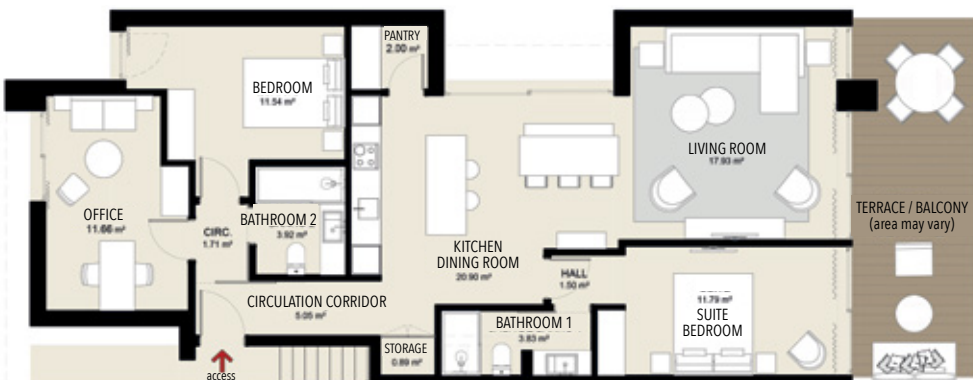
- The exteriors remain consistent with the small scale local architecture.
- The interiors: each building houses four apartments (two per floor).
- Each unit has a pool and garden, or a private terrace with a pool.



'There is a strong focus on the gardens at the center of the development, where we reduced the number of houses and created a central nucleus 'oasis type' garden at the centre of where the units converge.' *Jaime Morais (Architect)*



## STANDARD FLOOR PLAN EXAMPLE (BUILDING AREA: 110m<sup>2</sup>)



Non-contractual information. 3D images and plans are indicative only and do not represent a contractual guarantee and may include items that are considered to be extras.

## Services

- Rental Services, concierge / reception, all managed by Grupo Pestana.
- Clubhouse and gym.
- Security, housekeeping, maintenance and condominium management.



### Location map

Between *Sines* and *Vila Nova de Mil Fontes*,  
170Km from *Lisbon*.



**MASTER PLAN**

Property typology (number of rooms), plans, configurations, areas and prices are subject to change without notice.

## **Experience the local history and culture.**

- In the historic heart of the village of Porto Covo, in Largo Marquês de Pombal and surrounding streets, there are several regional restaurants, cafes and craft shops.
- Pessegueiro Island is an iconic and historic landmark in Porto Covo - here you will find the 16th century Santo Alberto do Pessegueiro fort; the ruins of an ancient Roman port; and a fishing center which, according to legend, was also a refuge for pirates.
- To visit the Pessegueiro Island: you can set out by boat to discover this place which is full of stories and legends.

## **All roads lead to the sea.**

- Pestana Porto Covo Village is surrounded by a coastal area with a wide range of over twenty beaches that can only be described as paradise.
- Walking along the Rota Vicentina's Fishermen's Trail you will have the best views over Porto Covo's cliffs and bays, along with its secret secluded beaches.
- Throughout the year, the beaches of Porto Covo are frequented by surfing lovers and other water sports enthusiasts.



**Reservations and sales contacts:**

**Tel: +351 934 409 283 / 967 197 234 (whatsapp)**

**Email: [pestanacostaalentejana@pestana.com](mailto:pestanacostaalentejana@pestana.com)**

**[www.pestanaportocovo.com](http://www.pestanaportocovo.com)**

Follow us on instagram

