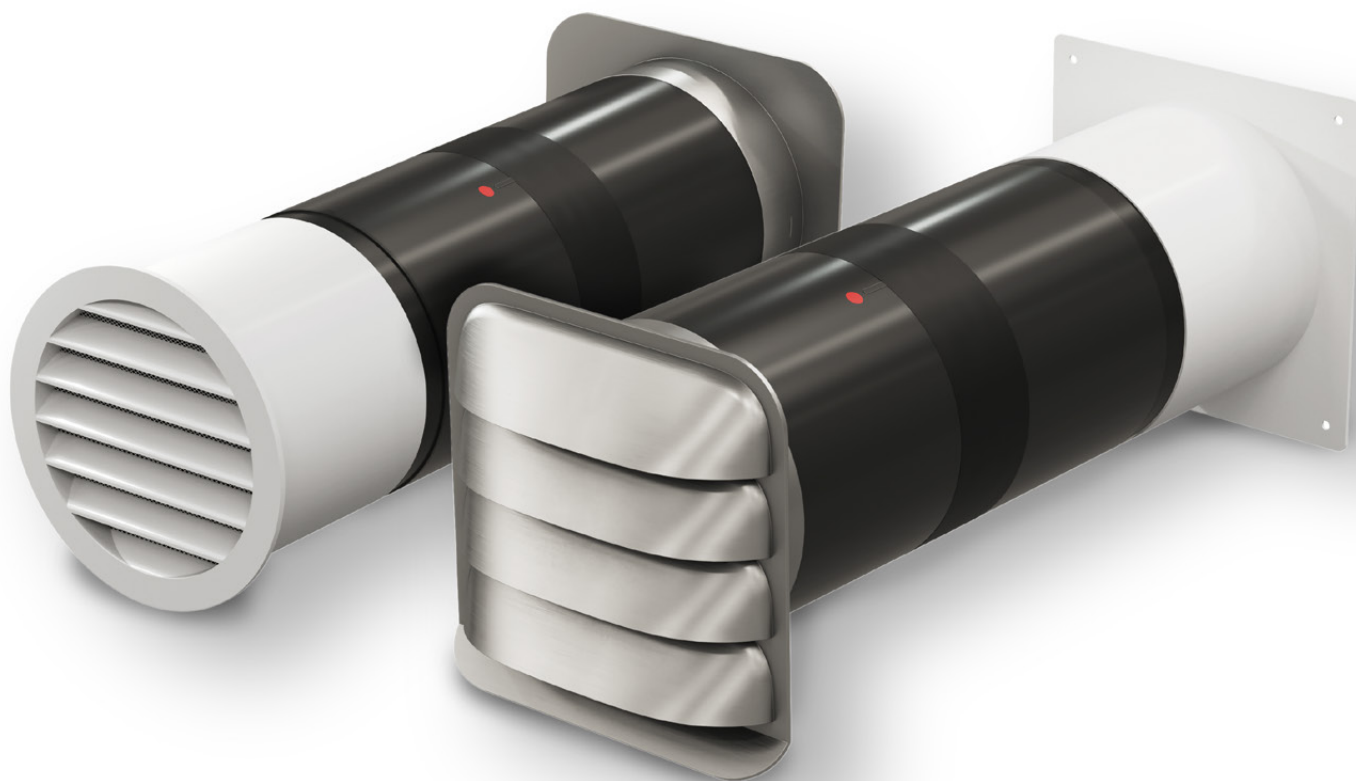


COMPAIR® Ventilation technology

COMPAIR® BIXO & BIXO Balance®



Naber
...inspires!



Ventilation technology

COMPAIR® BIXO
COMPAIR BIXO Balance®

The powerful
exhaust air/inlet air solution
for passive houses and
high-quality efficient houses

COMPAIR® Ventilation technology

COMPAIR® BIXO
COMPAIR BIXO Balance®

The powerful
exhaust air/inlet air solution
for passive houses and
high-quality efficient houses

A kitchen extractor with exhaust air ducting is often considered to be incompatible with the planning principles for low-energy buildings due to potential negative pressures. At the same time, the low rates of air exchange of systems for Controlled Ventilation of Living Space (CVLS) are not designed to quickly and effectively remove cooking fumes. Grease, odors and moisture remain in the room for too long thereby impacting the room climate and the CVLS system.

An independent study* has disproved the assumption that high-efficiency houses generally need to be equipped with circulating air kitchen extractors. The authors only recommend an air circulation solution for small apartments in passive or efficient buildings 40 with less than 90 m² of living space and efficient buildings 40. Nevertheless, the study states that circulating air has clear disadvantages in the capture of cooking steam and when it comes to removing moisture, reducing odors, energy efficiency and operating noise. **COMPAIR® BIXO/Bixo Balance®** is the answer.



* **Guide to extractor systems for kitchens— Recommendations for planners, consultants and users**, information and free download available at www.compair-flow.com/correct-and-safe-planning-of-extractor-systems/



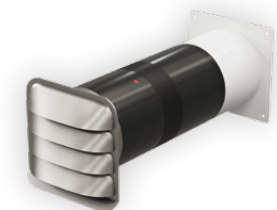
Unprecedented low U-value



Certified passive house component*



Exhaust air controls inlet air



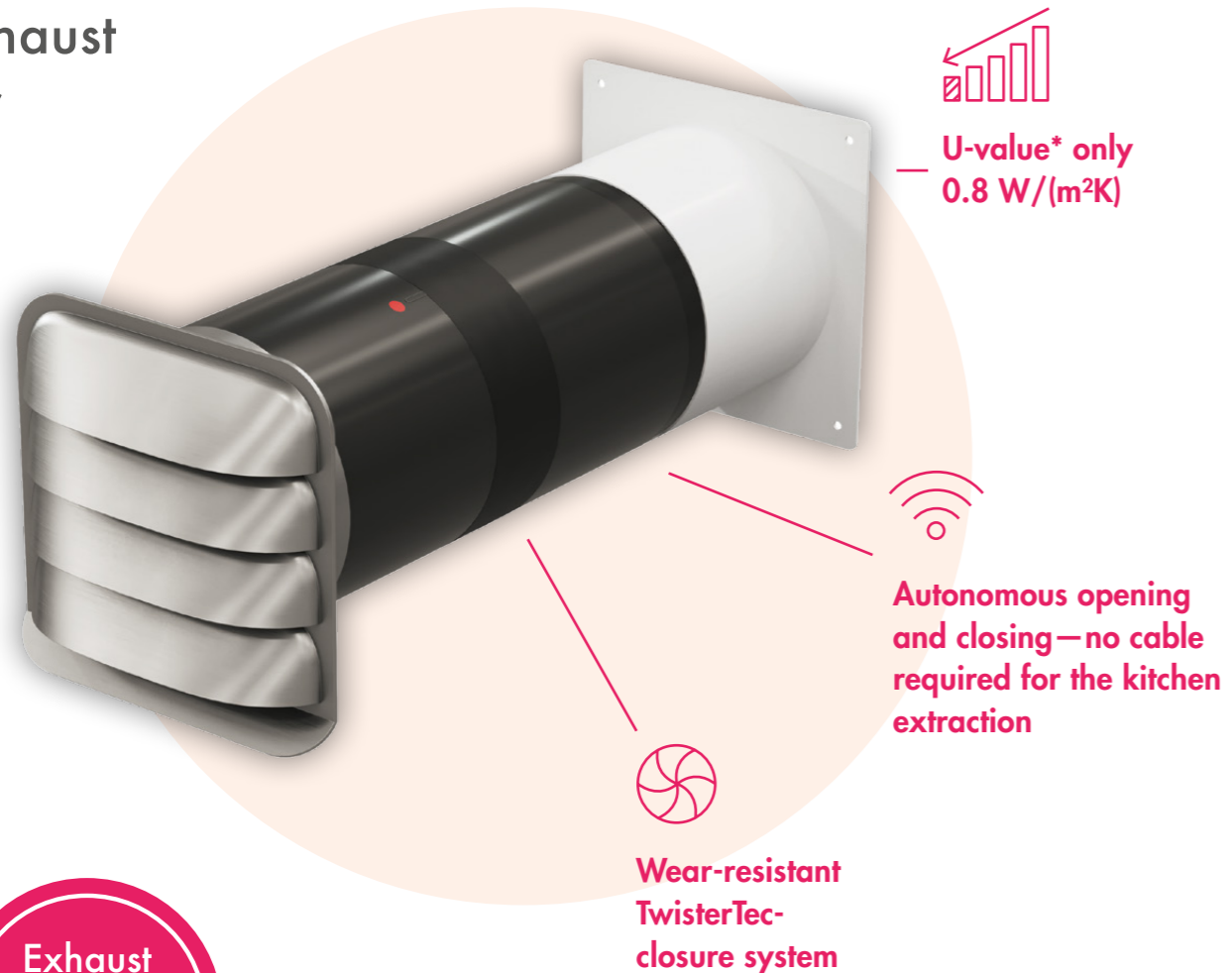
BIXO exhaust wall box



BIXO Balance®

* only exhaust air

Exhaust Air



Exhaust air needs supply air!

A kitchen hood system with a beneficial exhaust air solution in a low-energy house requires competent planning and innovative technology. **COMPAIR® BIXO** and **BIXO Balance®** are the key components for such a project. When closed, their U-value* of only 0.8 W/(m²K) corresponds to that of a triple-glazed window.

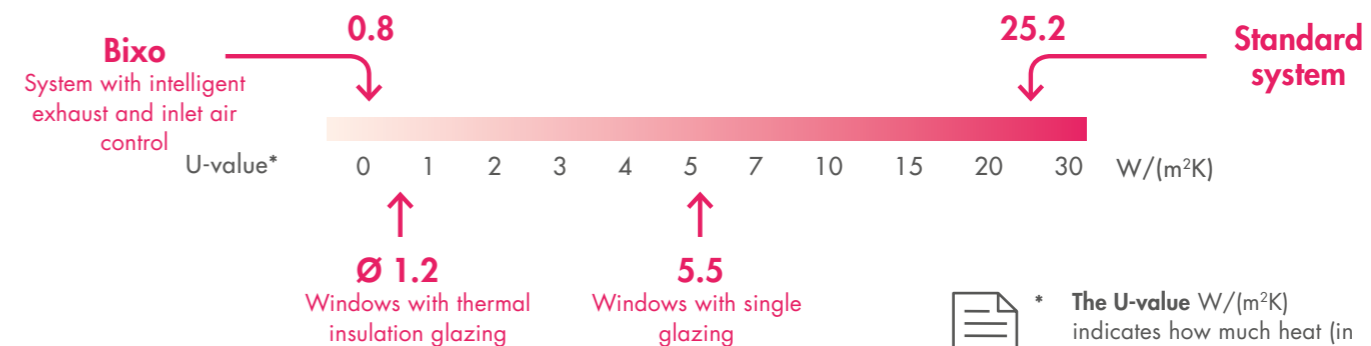
- Barrier-free air flow**
- BlowerDoor certified**

COMPAIR® BIXO and **BIXO Balance®** combine the highest degree of energy efficiency with the maximum amount of cooking pleasure



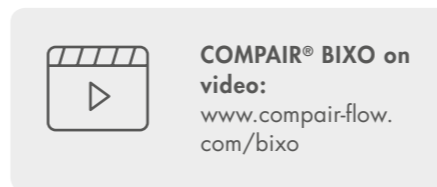
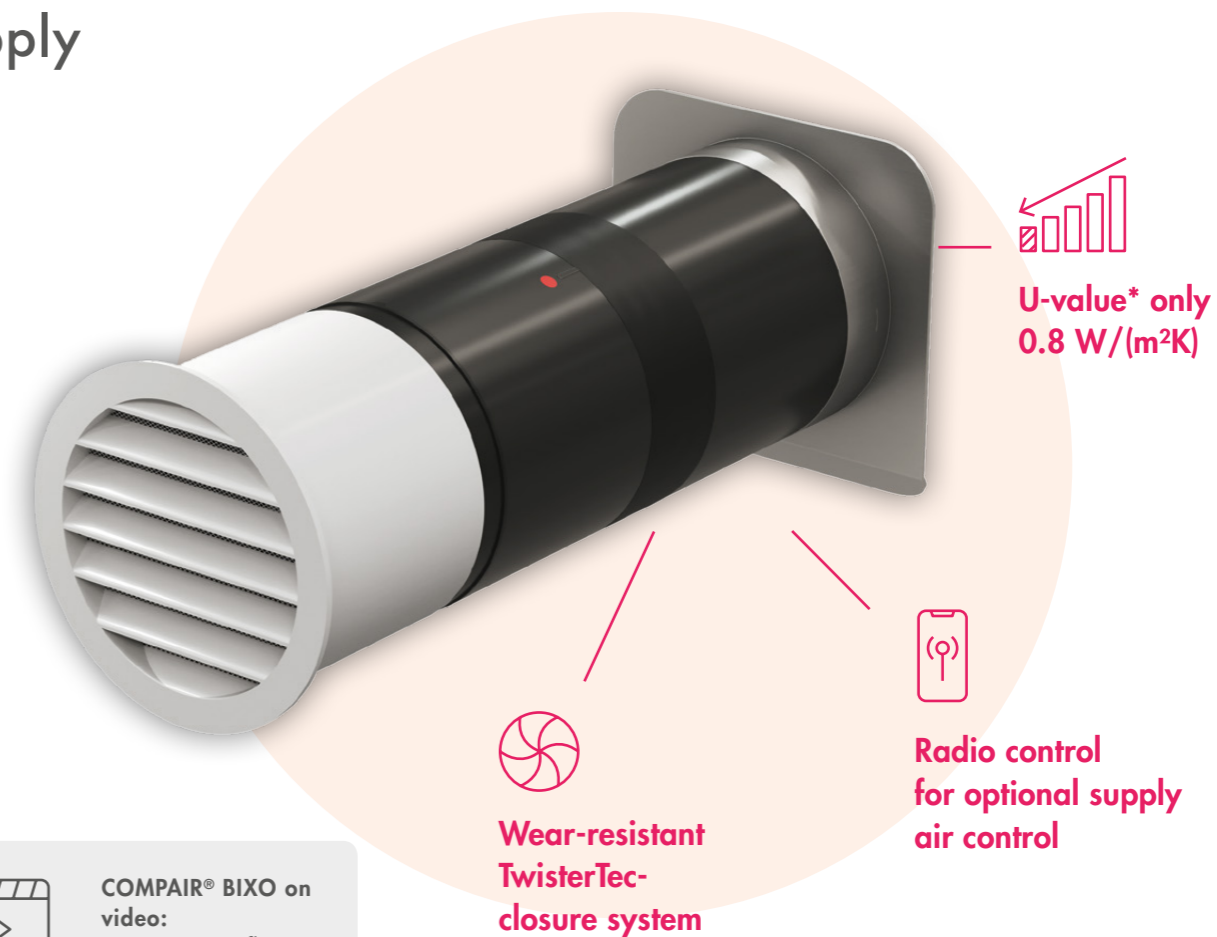
Nearly airtight building shells require sufficient inlet air to be provided. **COMPAIR® BIXO** offers unique comfort and safety for the perfect exchange of air thanks to its intelligent control system.

COMPAIR® BIXO was developed together with Werner Sobek, Professor at the University of Stuttgart and one of the founders of the German Sustainable Building Council (DGNB).



* The U-value W/(m²K) indicates how much heat (in Watt=W) per square meter of space (m²) per degree of temperature difference (in Kelvin=K) flows through a building component between the inside and outside

Supply Air



The TwisterTec technology



1. Ingeniously simple

The airtight textile membrane is twisted by an electric motor. The diffuser thus closes and opens continuously. When closed, the BIXO is hermetically sealed. Three insulating air chambers are formed.

2. Flow-optimized

As there are no flaps, there are no obstacles. The air flowing in or out passes through the smooth high-tech textile membrane almost without any barriers.

3. Intelligent control

The electronics integrated in the unit registers the exhaust air flow of the kitchen extractor and opens the diffuser completely even at low volume flows. Thus even low and medium output levels exhibit high efficiency.

4. Exhaust air controls supply air If one or more **BIXO Balance®** supply air wall boxes are installed, the control unit sends an open signal to up to three devices.



Naber—solutions competence in a system

BIXO Exhaust air



Innovative exhaust air wall box for efficiency and passive houses

- Passive-house-certified component
- BlowerDoor certified
- Especially low U-value* at 0.8 W/(m²K)
- Hermetically sealed TwisterTec closure system
- Autonomous operation, only 230 V connection required
- Flow-optimized, barrier-free design
- No rattling noises

BIXO Balance® set



Innovative exhaust and inlet air wall box for efficiency and passive houses in a set

- Comprising: 1 BIXO exhaust air unit, 1 BIXO supply air unit
- Decentralized exhaust/supply air system
- BlowerDoor certified
- Especially low U-value* at 0.8 W/(m²K)
- Hermetically sealed TwisterTec closure system
- Flow-optimized, barrier-free design
- Autonomous operation, only 230 V connection required
- Wireless, bi-directional communication
- Great flexibility in the arrangement of the inlet and exhaust air elements
- Up to three BIXO Balance® supply air wall boxes can be connected
- Safe and energy-efficient control of the inlet air volume flow
- No rattling noises

BIXO Balance® supply air



Innovative inlet air wall box for efficient and passive houses

- Expansion module for BIXO Balance® Set
- BlowerDoor certified
- Especially low U-value* at 0.8 W/(m²K)
- Hermetically sealed TwisterTec closure system
- Autonomous operation, only 230 V connection required
- Opens the exhaust air box via remote signal
- Up to three inlet air wall boxes can be integrated
- Safe and energy-efficient control of the inlet air volume flow
- No rattling noises
- Flow-optimized, barrier-free design



The world of innovative kitchen ventilation:
compair-flow.com

* U-value is a measure of thermal insulation. The lower the U-value, the better the insulation.



Naber GmbH
Development · Production · Distribution

Enschedestraße 24
48529 Nordhorn
Germany

Phone +49 5921 704-0
Fax +49 5921 704-140

naber@naber.com
www.naber.com

09/2019 E

Naber – the original

All the major manufacturers of extractor systems worldwide rely on Naber ventilation systems and components. With Naber, kitchen professionals find solutions for almost every planning and installation task. The in-house development department regularly devises technically and creatively ground-breaking products that make kitchens the world over a little better, more comfortable and more efficient.