



Réf :	Emetteur : MB	Date : 12/01/2016	REV : 0	Page 1 / 18
-------	---------------	-------------------	---------	-------------

Step 1 :

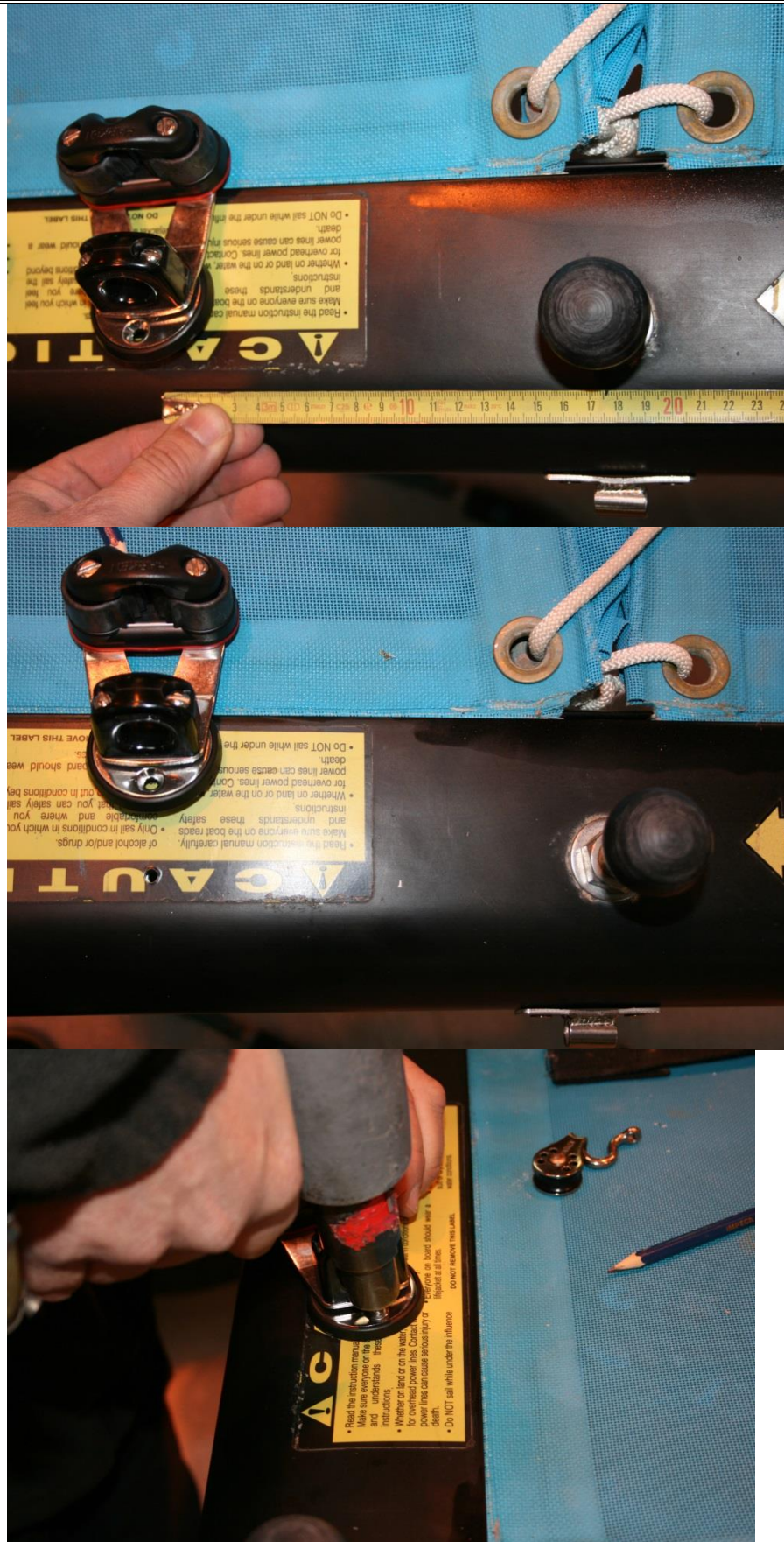
Place the pad-eye fixation on the middle of the front crossbar. Drill $\varnothing 4.9$ and fix it with the pops.



Réf :	Emetteur : MB	Date : 12/01/2016	REV : 0	Page 2 / 18
-------	---------------	-------------------	---------	-------------

Step 2 :
Place the swivel on the starboard side to 17cm / 6.69inches from the axis of the transom.

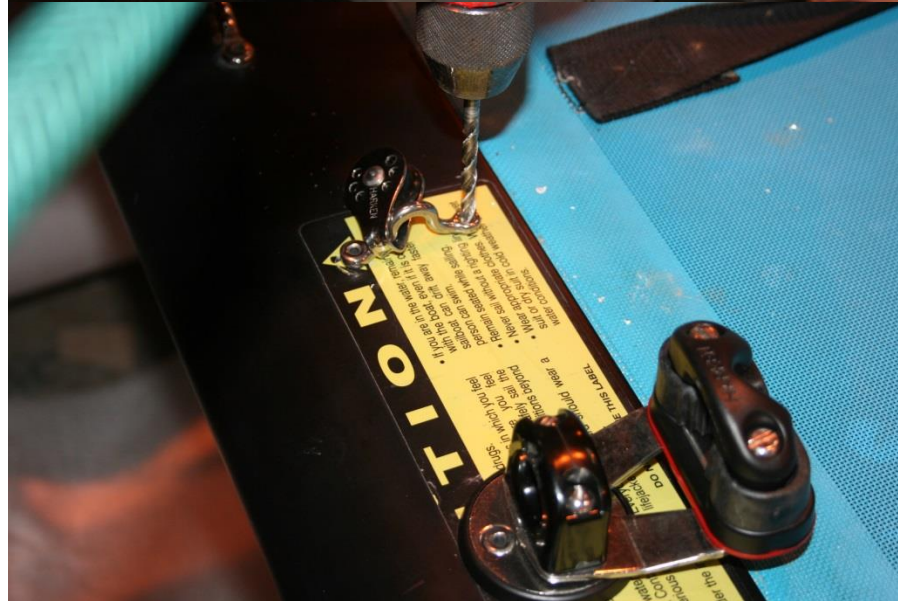
Drill $\varnothing 4.9$.
Fixe the swivel with the 4.8x11 pops.



Réf :	Emetteur : MB	Date : 12/01/2016	REV : 0	Page 3 / 18
-------	---------------	-------------------	---------	-------------

Step 3 :

Fix the pad-eye on the starboard side at 30cm / 11.81inches from the axis of the crossbar. Don't forget the single block on the pad-eye. Drill $\varnothing 4.9$.



General view of the front crossbar.





Réf :	Emetteur : MB	Date : 12/01/2016	REV : 0	Page 4 / 18
-------	---------------	-------------------	---------	-------------

Step 4 :

Phase 1 :

Take the mast tang and position it at 62.5cm / 24.6inches from the top of the mast with the big hoel of the tang down the mast. Work the shape of the tang so it although the shape of the mast.



Phase 2 :

Degrease the surface where will be the tang. Apply sika over the entire inner surface of the tan, then position it. Be careful that there is sika across the surface when the tang is on the mast.





Réf :	Emetteur : MB	Date : 12/01/2016	REV : 0	Page 5 / 18
-------	---------------	-------------------	---------	-------------



Phase 3 :
Drill $\varnothing 5.3$ one hole and put the cap of the pop and the pop.





Hobie Cat® Europe

Spinnaker assembly manual Getaway

Réf :	Emetteur : MB	Date : 12/01/2016	REV : 0	Page 6 / 18
-------	---------------	-------------------	---------	-------------



Phase 4 :
Drill all the
other holes
and rivet in the
same way.





Réf :	Emetteur : MB	Date : 12/01/2016	REV : 0	Page 7 / 18
-------	---------------	-------------------	---------	-------------

Phase 5 :
Clean all the parts.



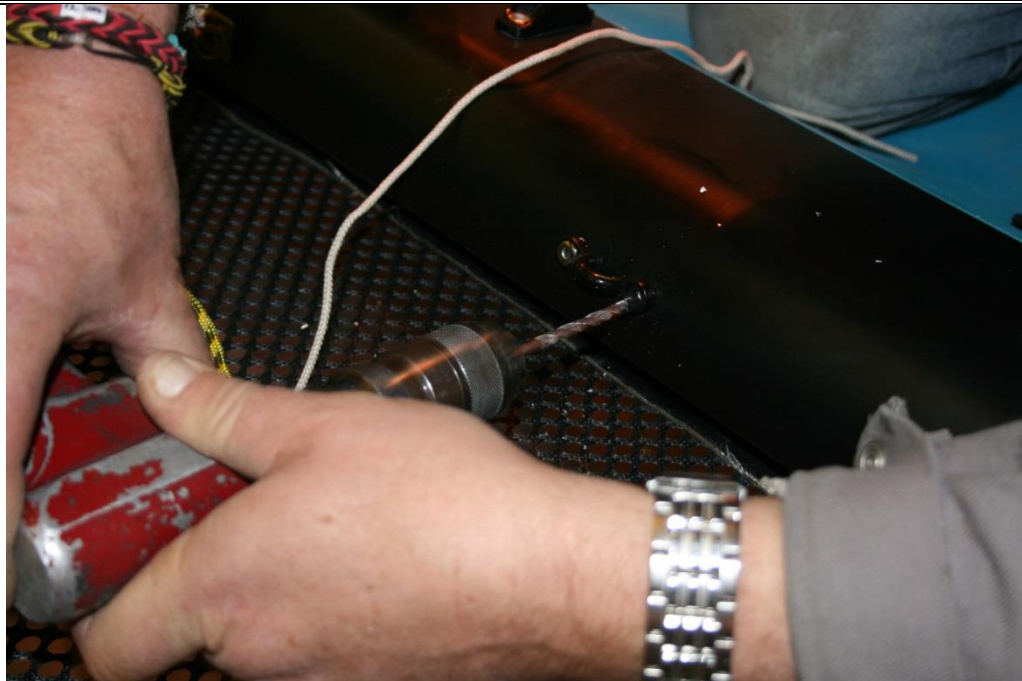
Step 5 :
Spinnaker pad-eye fixation
Position on each side of the crossbar over the front the two pad-eye. Position them at 2cm / 0.78inches from the hull. Drill $\varnothing 4.9$ and fix the pad-eye with pops 4.8x11. Do the same for the second pad-eye.





Réf :	Emetteur : MB	Date : 12/01/2016	REV : 0	Page 8 / 18
-------	---------------	-------------------	---------	-------------

Step 6 :
On the front crossbar, position at 25cm / 9.84inches from the center, on port side, the pad-eye for the fixation of the trumpet spinnaker bag. Drill $\varnothing 4.9$ and fix it with pops 4.8x11.



Step 7 :
On each side of the crossbar, at 67cm / 26.37inches more or less ; fix the pad-eye





Réf :	Emetteur : MB	Date : 12/01/2016	REV : 0	Page 9 / 18
-------	---------------	-------------------	---------	-------------



Step 8 :
Put the spi pole on the pad-eye fixation.
Fix the bridles on the pad-eye of the front beam with help of the shackles.





Réf :	Emetteur : MB	Date : 12/01/2016	REV : 0	Page 10 / 18
-------	---------------	-------------------	---------	--------------

Step 9 :
Put the spinnaker trumpet approximately at 113.5cm / 44.48inches ahead of the spi pole. Put the bag on to make sure it's a few centimeters from the front crossbar.



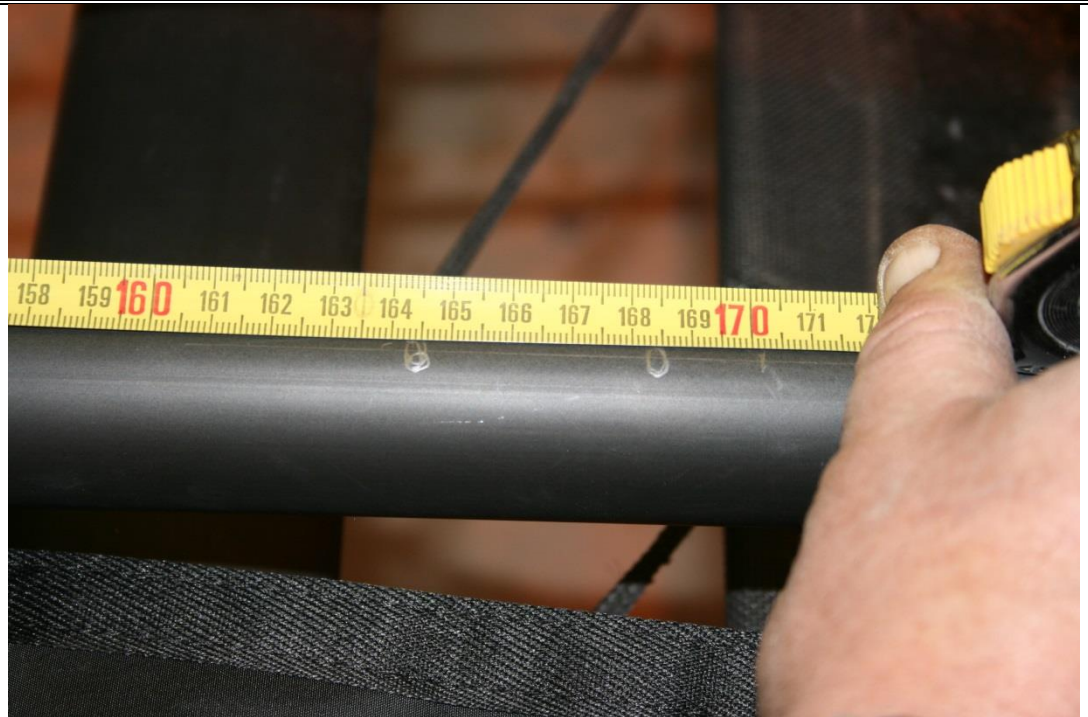
Step 10 :
Position the spinnaker trumpet to the horizontal, then drill at $\varnothing 4.9$ and fix it with pops.





Réf :	Emetteur : MB	Date : 12/01/2016	REV : 0	Page 11 / 18
-------	---------------	-------------------	---------	--------------

Step 11 :
Position the pad-eye at 164.5cm / 64.56inches about the front of the pole. Drill at Ø4.9.



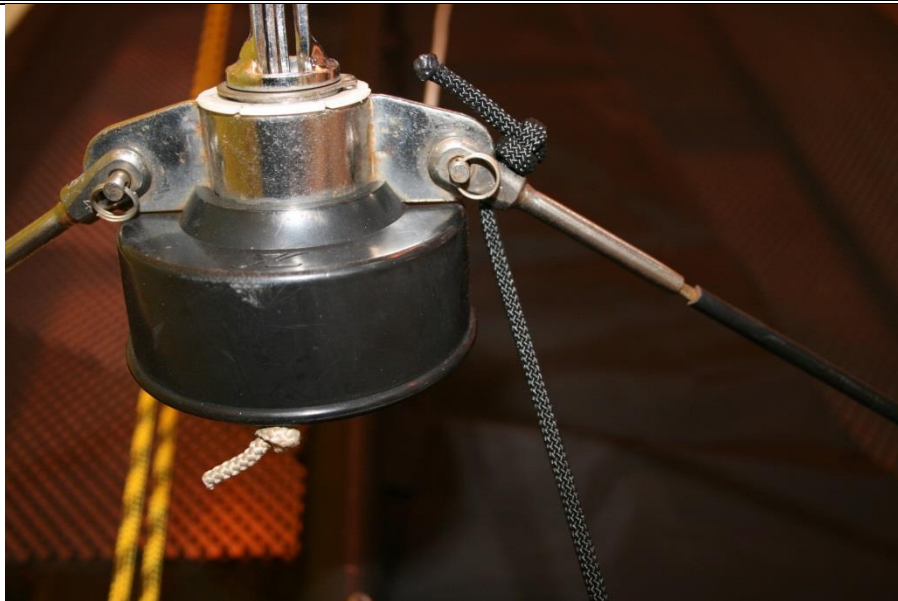
Step 12 :
Fix the pad-eye on the spinnaker pole.



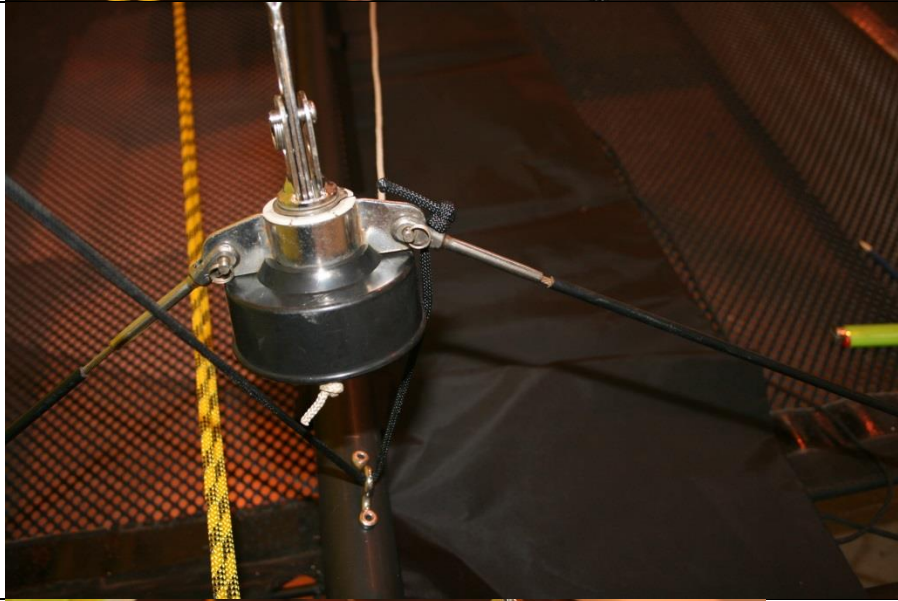


Réf :	Emetteur : MB	Date : 12/01/2016	REV : 0	Page 12 / 18
-------	---------------	-------------------	---------	--------------

Step 13 :
Phase 1 : Run the rope for the spi pole inside one side the fearler. Make a stop knot.



Phase 2 :
Run the rope on the pad-eye of the spinnaker pole.



Phase 3 :
Finish on the other side of the furler.



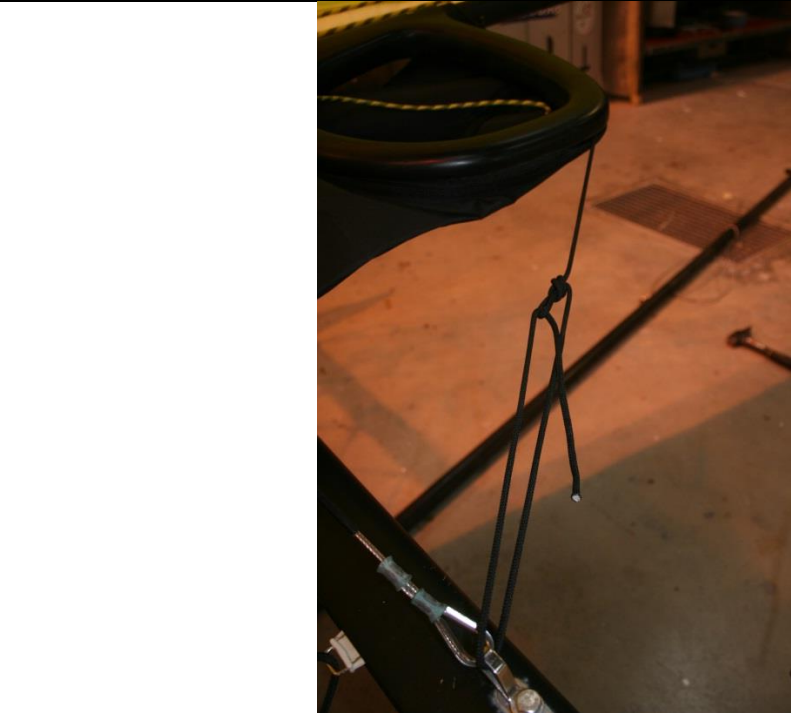


Réf :	Emetteur : MB	Date : 12/01/2016	REV : 0	Page 13 / 18
-------	---------------	-------------------	---------	--------------

Phase 4 :
Then go back on the pad-ey of the spi pole. Tight the rope well, pole bridle have to be in a good tension. Make some knots.



Step 14 :
Rope to maintaining spinnaker trumpet. Make a knot on the tube. Run inside the trumpet to the padeye on the port side of the beam. Tight the rope then make a knot.





Réf :	Emetteur : MB	Date : 12/01/2016	REV : 0	Page 14 / 18
-------	---------------	-------------------	---------	--------------

Step 15 :
Install the block for the spinnaker halyard in back of the trampoline.



Step 16 :
Run the spinnaker halyard on the block fix on the mast with the twisted shackle. You can now put the mast on the boat. Then fix the halyard to the head of the spinnaker.





Réf :	Emetteur : MB	Date : 12/01/2016	REV : 0	Page 15 / 18
-------	---------------	-------------------	---------	--------------

Step 17 :

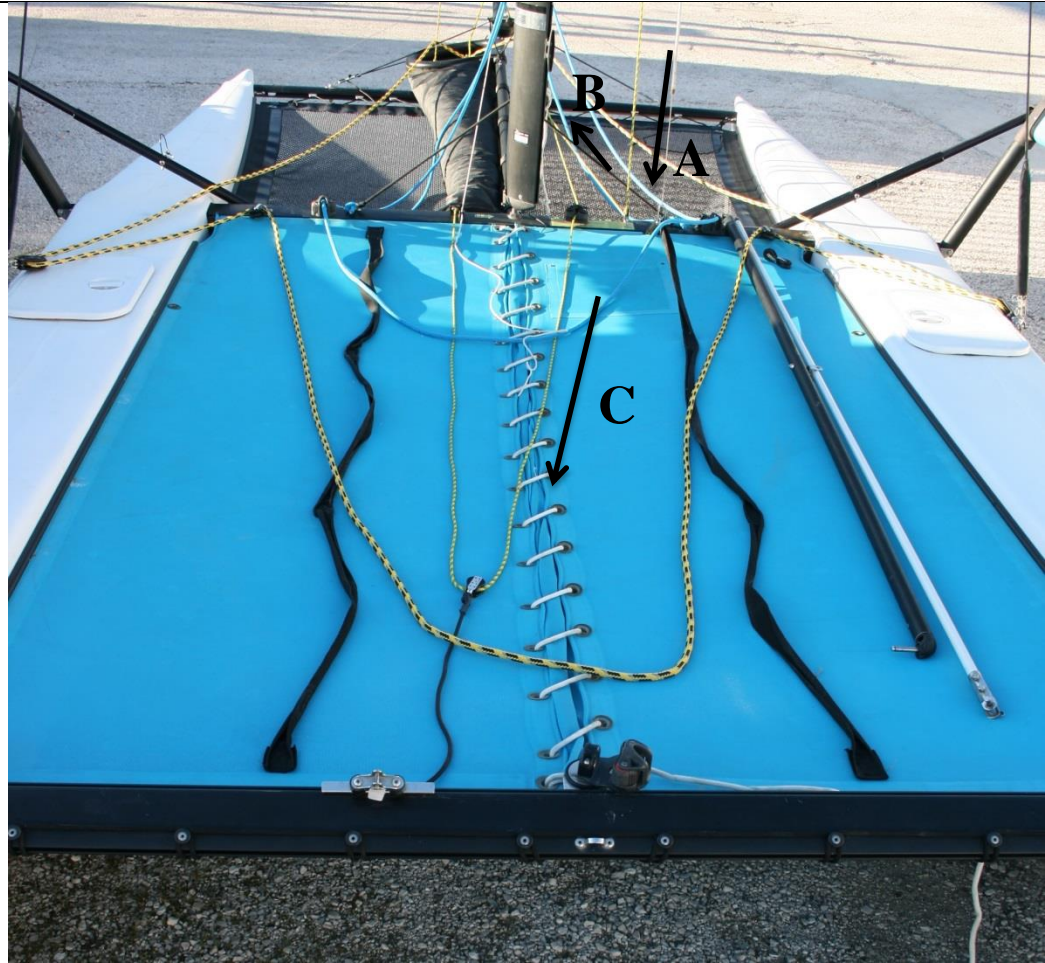
Preparation of the tack rope: one of the extremities has to be fixing on the pad-eye in the front of the spi pole. Then run the rope inside one of the block of the double-block, get back on the block in front of the spi pole. Then fix the rope on the tack point of the spinnaker.





Réf :	Emetteur : MB	Date : 12/01/2016	REV : 0	Page 16 / 18
-------	---------------	-------------------	---------	--------------

Step 18 :
Run the spinnaker halyard down long the mast. Pass through the pulley on the rear spring forward (A to B). Then in the double pulley along the spi pole from the left to the right (B to C). Then on the cleat on the crossbar.

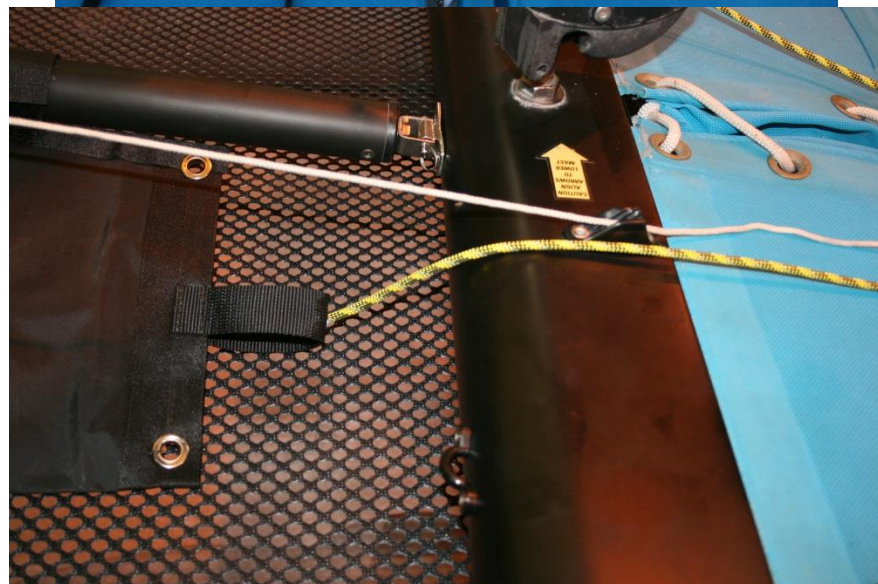
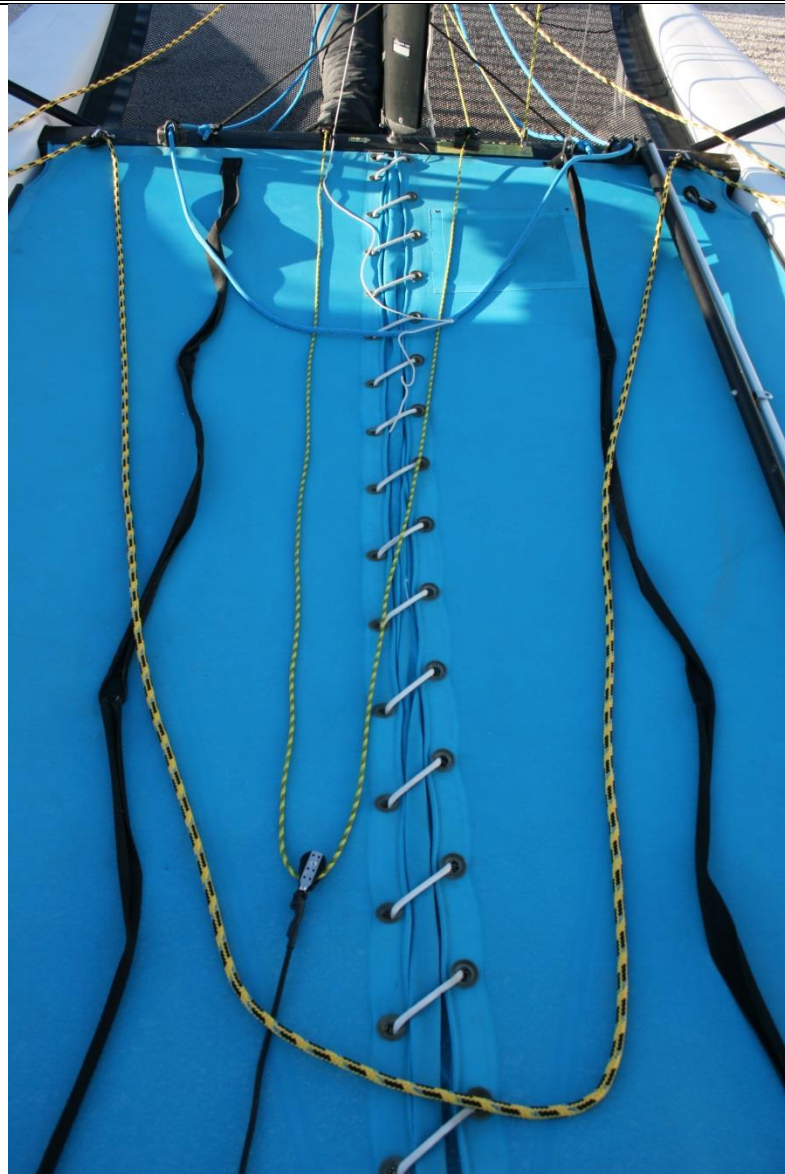




Réf :	Emetteur : MB	Date : 12/01/2016	REV : 0	Page 17 / 18
-------	---------------	-------------------	---------	--------------

Step 19 :

Run the halyard on the block to the rear of the trampoline, return to the port bow of the boat and go through the trumpet bag.





Réf :	Emetteur : MB	Date : 12/01/2016	REV : 0	Page 18 / 18
-------	---------------	-------------------	---------	--------------

Step 20 :
Fix the spinnaker bag to the front cross bar.



Step 21 :
Run de spi sheet on the grommet of the spinnaker and make a knot. Then go on the port winch block then on the little block on the front crossbar. To the same way on the other side of the boat and finish with a knot.

