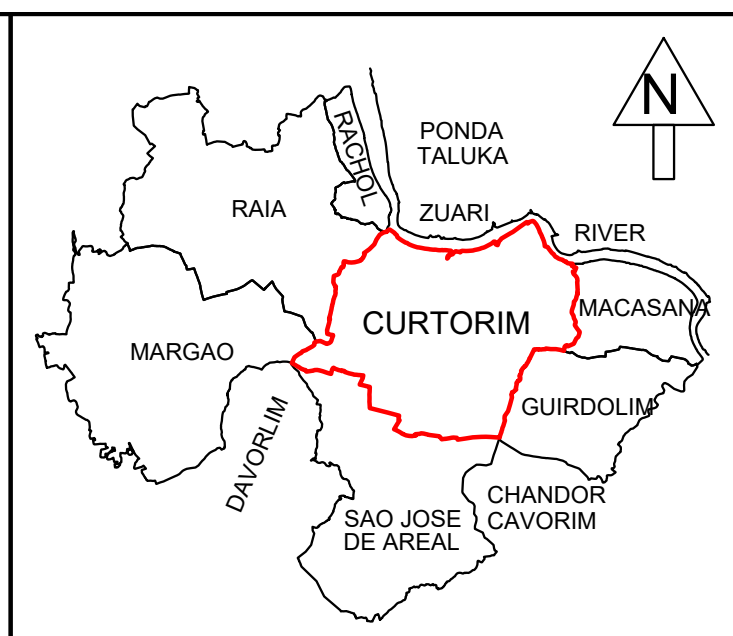


**IMPORTANT FEATURES & BHS CURTORIM AREAS
PROPOSED RALLOI TOLLEM-VAINGNODDI ADDI-ANGDI TOLLEM-SIRGE
ADDI-CHOUK(DYKE)-COTTAMBO-POI / FIELD CHANNELS UPTO RIVER ZUARI
(AGRO BIO-DIVERSITY / HERITAGE SITES)**

BY
SHRI. J. SANTANO RODRIGUES
CHAIRMAN
CURTORIM BIO-DIVERSITY MANAGEMENT COMMITTEE
CONVENAR OF GOA PRIs UNION
AS ON 19-05-2020



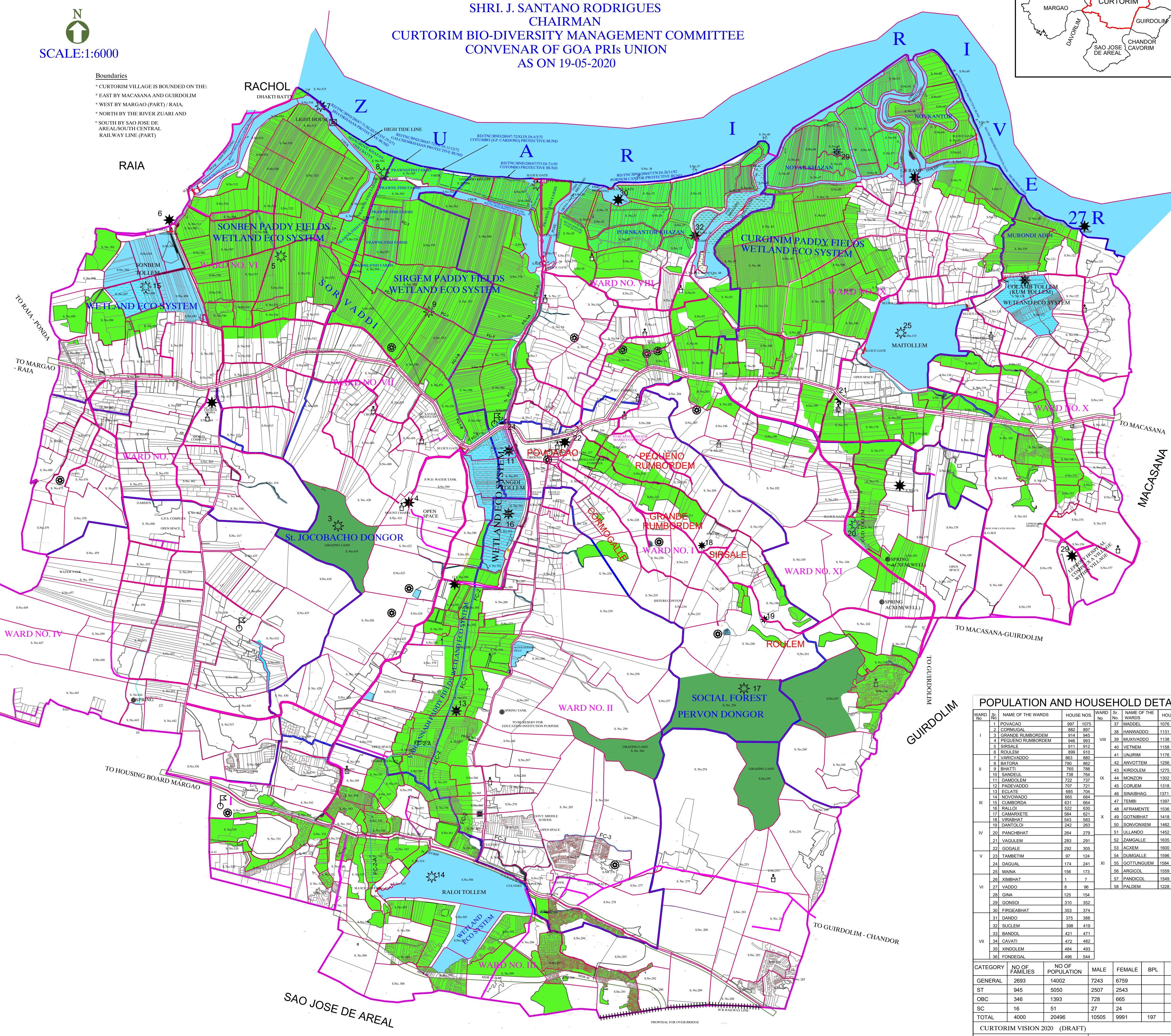
N
↑
SCALE:1:6000

Boundaries
* CURTORIM VILLAGE IS BOUNDED ON THE:
* EAST BY MACASANA AND GUIRDOLIM
* WEST BY MARGAO (PART) / RAIA,
* NORTH BY THE RIVER ZUARI AND
* SOUTH BY SAO JOSE DE AREAL/SOUTH CENTRAL RAILWAY LINE (PART)

EXISTING VILLAGE ASSETS	NOS
CHURCHES	2
CHAPELS	4
CROSS/MINI CHAPLES	35
TEMPLES	4
SCHOOL (HSS)	1
HIGH SCHOOLS	3
GOVT. MIDDLE SCHOOL	1
GOVT. PRIMARY SCHOOLS	4
PRIVATE PRIMARY SCHOOLS	2
KG SCHOOL	1
ANGANWADI / BALWADIS	10
BANKS / ATMs	7 / 5
POST OFFICE	1
TELEPHONE EXCHANGE	1
GOVT. PHC	1
VETERINARY SUB CENTER	1
PRIVATE HOSPITAL	1
MEDICAL CLINICS	7
PHARMACIES	4
RICE MILLS	4
THRASHING YARDS	4
BUS STOPS	12
ELECTRICITY POLES	2300
ELECTRICITY TRANSFORMERS	42
CLUBS / TENANTS ASSOCIATION	3 / 5
LAKES	6
NULLAHS	92
SPRINGS	15
WELLS (INCL. 7 PAULINE WELLS)	250
TANKS	12
ROADS TARRED	95 Km
ROADS KACCHA	25 Km
PATHWAYS	6 Km
LIGHT HOUSE	1 NO
CONVENTS	
SHOPS AND ESTABLISHMENTS	575 NOS
LEPROSARY HOSPITAL COMPLEX (A VILLAGE WITHIN A VILLAGE)	
OPEN SPACES	24 NOS
GARDENS	06 NOS
PROPOSE HIGH TIDE LINE	01 NO
SCR RAILWAY LINE (PART)	01 NO

LEGEND

- PADDY FIELDS / KHAZANS = 494.9695 Ha
- ORCHARDS / GRAZING LAND CUM SOCIAL FOREST = 177.0190 Ha
- WATER BODIES / RIVER = 89.5250 Ha
- TRIBAL AREA
- FIELD CHANNELS
- PANCHAYAT WARDS BOUNDARY LINES
- PLAY GROUND
- SLUICE GATE
- SCR RAILWAY LINE (PART)
- PROPOSE HIGH TIDE LINE
- MUXIWADO-VETNEM-CORJEM OF PROPOSED WATER SPORTS/ECO TOURISM
- AGRO ECO TOURISM & HERITAGE / WATER SHED SITES
- SPRINGS & WELLS
- TEMPLE
- CHURCH / CHAPEL



POPULATION AND HOUSEHOLD DETAILS

WARD NO.	NAME OF THE WARDS	HOUSE NOS.	WARD NO.	NAME OF THE WARDS	HOUSE NOS.
I	POVACAO	997 1075	IX	MADELO	1076 1130
II	CORMOGAL	882 927	X	HANWADDO	1131 1137
III	GRANDE RUMBORDEM	914 945	XI	MAUVASDO	1138 1157
IV	PEQUENO RUMBORDEM	946 993	XII	VETNEM	1158 1175
V	SIRSALE	911 912			
VI	ROLLEM	899 910			
VII	VARCIBANCO	931 964			
VIII	BATORA	290 892			
IX	IBHATTI	785 788			
X	SANDES	778 784			
XI	DAMODIM	772 777			
XII	PAVILVADO	707 711			
	EGILATE	485 704			
	NOVOVADO	893 894			
	CURBORIA	431 664			
	RALLOI	232 630			
	CAMARANTE	594 611			
	VIRABHAT	543 583			
	DANTOLIA	242 263			
	PANCHBHAT	284 279			
	VAGUEM	283 291			
	SOGALE	292 305			
	TAMBETIM	97 124			
	DAGUAL	174 241			
	MANA	156 173			
	XIMBHAT	1 7			
	VADDO	8 96			
	GINA	125 154			
	CONSOI	319 352			
	FRESEBHAT	353 374			
	DANEO	375 388			
	SUCLEM	398 419			
	BANDOL	421 471			
	CAVATI	472 482			
	XINDOLEM	484 493			
	FOSSIGAL	1 96 344			

CATEGORY	NO OF FAMILIES	NO OF POPULATION	MALE	FEMALE	BPL	APL
GENERAL	2693	14002	7243	6759		
ST	945	5050	2507	2543		
OBC	346	1393	728	665		
SC	16	51	27	24		
TOTAL	4000	20496	10505	9991	197	3793

CURTORIM VISION 2020 (DRAFT)

POPULATION BELOW 18 YEARS 7200
POPULATION ABOVE 18 YEARS 11396
POPULATION ABOVE 60 YEARS 1901

PREPARED BY
J. SANTANO RODRIGUES
CHAIRMAN OF WARD
DEVELOPMENT COMMITTEE
AND BIO-DIVERSITY
MANAGEMENT COMMITTEE
V.P. CURTORIM