

From S. F.:  
Sierra, Feb. 3.  
Per S. F.:  
Honolulu, Feb. 4.  
From Vancouver:  
Marama, Feb. 2.  
Per Vancouver:  
Zealandia, Feb. 25.

# Honolulu Star-Bulletin

3:30 Edition

Evening Bulletin, Est. 1882, No. 5479  
Hawaiian Star, Vol. XX, No. 6599

22 PAGES—HONOLULU, TERRITORY OF HAWAII, SATURDAY, FEB. 4, 1916. 22 PAGES

PRICE FIVE CENTS.

## SCHWERIN TALKS OF SHIPPING COMBINE

### WOMAN ON LINER IS WANTED IN THE WAKE OF THE FLAMES: FIRST PICTURES OF GREAT PAHOA MILL FIRE U. S. TRIED FORCE HE SAYS

#### WOMAN ON LINER IS WANTED

##### Stewardess of Mongolia Believed Central Figure in the Startling Opium Smuggling Case

Mrs. M. S. Taylor, stewardess on the Pacific Mail liner Mongolia, well known in Honolulu, San Francisco and the Orient, friend of hundreds of trans-Pacific travelers, is a central figure in an sensational opium-smuggling case as has been unearthed here, for years.

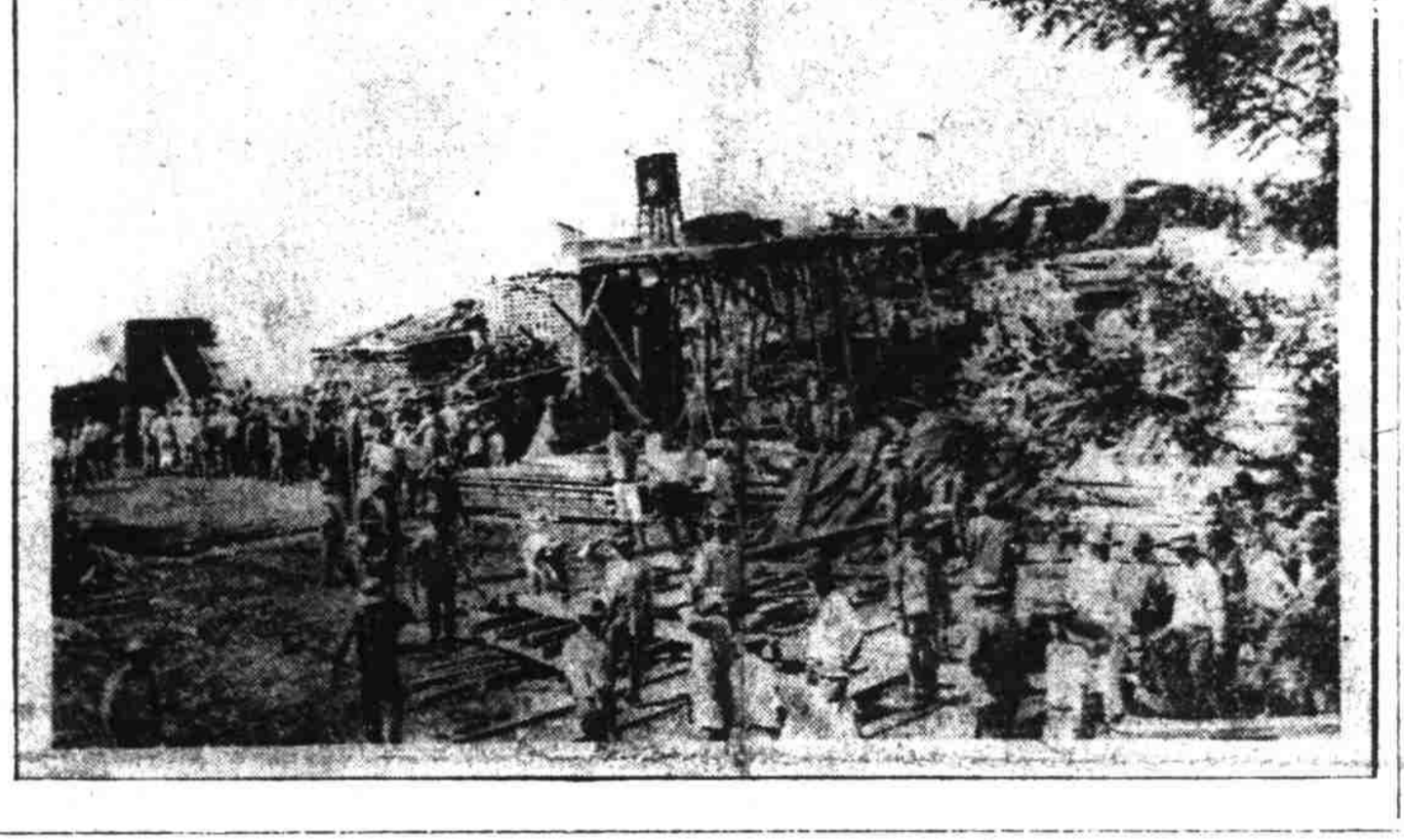
The aftermath of the arrest yesterday of Lee Wah Chung, Chinese merchant, is the returning of a secret indictment by the federal grand jury yesterday morning and rapid but guarded preparations made by the federal authorities to take the "woman in the case" into detention when the Mongolia reaches San Francisco next Tuesday.

#### DEEP Sorrow in Halls of City Hall

The city hall halls were ankle deep in tears this morning, and last night there in its passage through that historic edifice had brought around that fatal moment that separated from the mortal trow a den or more of the faithful retainers of the G. O. P. who had been laboring in the vineyard of the commonwealth for many months. They were sad, not of them so say they wept inward if not outwardly.



DESTRUCTION OF THE PAHOA MILL. The photograph above, on the left, shows the scene of ravage looking west where the big mill once stood. The right is a picture of the last pile of lumber to burn, already half decayed. Below is a later photograph showing practically all that is unburned at Pahoa. The pile at the extreme left is in full blaze on all three sides shown, and propped up to prevent falling toward the unburned section. In smaller photograph Col. Sam Johnson, manager of the mill, is shown at the fire trying to get lumber out of the pile of the flames. The photographs show a vivid idea of the extent of the damage wrought by the fire and the foolishness of human attempts to stop the onward march of the flames. The pictures were taken under difficult conditions in the midst of smoke and fire.



James B. Castle Returns from the Scene of Fire—Unable to Predict When Work Will Be Resumed at Burned Mill

"We cannot tell when work will be resumed until the extent of the damage to the machinery has been determined," said Jas. B. Castle, president of the Hawaiian Development Company, on his return this morning from the fire which consumed the big hardwood mill at Pahoa.

#### BRETT NAMES MANY NEW MEN

Harry Clark, who for some months has served with the police department as court officer for the circuit court, is today promoted by Sheriff Jarrett to fill the vacancy left about the central position, caused by the retirement of J. C. Parish.

Mr. Jarrett has accepted a clerical position with the city and county and the police department inspector's duty will be associated with the police department.

Another well known officer to leave the department, because of better opportunity outside the service, is Officer O'Hara, a foot police officer who left for his part of January took up work in the garbage department.

#### Engineers To Stick, Is Now The Report

The local association of marine engineers is declared by those competent to express an opinion to be against any participation in the present controversy existing between the Inter-Island Steam Navigation Company and its dissatisfied masters and mates.

The new Carnegie library will be formally opened this afternoon, the program having been published yesterday. The band plays from three to four o'clock, and there will be a short program of addresses by President Lewis and a number of trustees and Prof. M. M. Scott, Governor Peary will be given the first registration card and the first book and the library will be opened to visitors and registration of members until six o'clock. Registration will also be made early next week at hours to be announced later.

#### KAM AND DE RUSSY GET FUNDS

The war department is waking up to the urgent needs of the troops recently sent to Okla. A few days ago authorization was given for barracks and quarters for the Twenty-fifth Infantry, and now comes cable authority to purchase tent flooring for the coast artillery companies at Kamoharua and De Russy.

#### SOLONS VOTE TO LIMIT TERM OF THE PRESIDENT

WASHINGTON, Feb. 1.—The senate today voted, 47 to 23, to limit the term of the president of the United States to six years, without reelection. The vote came as a surprise, although it was known that President Taft and a number of the older leaders of the senate favored the plan as a protection against the third term idea.

#### SAYS FIRE BUG SET THE BLAZE AT WILEI

According to Chief Thurston, two fires in the old U. S. court in Wilei which called out the department yesterday afternoon, were the result of the activity of a fire bug.

#### SUFFRAGETTE SMASHES CASE IN THE VERY TOWER OF LONDON

LONDON, Feb. 1.—One of the militant suffragettes who have been existing to riot here for several days, this morning entered the tower and smashed the glass of the show case containing replicas of the famous crown jewels of Great Britain.

#### U. S. TRIED FORCE HE SAYS

Head of the Pacific Mail Line Tells Solons That Government Wanted to Compel Pact Between His Company and the American-Hawaiian Corporation, but Failed in Its Attempt—Latter Line Now Operates Under Official Tariffs, He Adds

WASHINGTON, Feb. 1.—R. P. Schwerin, vice-president and general manager of the Pacific Mail Steamship Company took the stand in the congressional investigation of the shipping conditions of this and other countries and made some astonishing statements to the committee. He told that body that the government had, at some time in the past, attempted to force a pool between the American-Hawaiian steamers and those of the Pacific Mail line, but had failed in its effort. He added that the American-Hawaiian line now operates its steamers under tariffs fixed by government officials through the Panama Steamship Company.

#### FEDERAL INCOME TAX SEEMS SURE

SANTA FE, N. M., Feb. 1.—What advocates of the federal income tax amendment to the United States constitution declare to be a decisive victory was won in the New Mexico legislature today, when the senate voted in favor of the tax. If the house ratifies the plan on Monday, as is expected, the federal amendment to the constitution carries.

#### WAR PANIC GRIPS BANKS OF FRANCE

PARIS, Feb. 1.—The fear of war becoming general throughout Europe has again seized the banks of France and today it is almost impossible to secure any gold. The precious metal seems to have disappeared from circulation, and the banks are refusing to disburse it.

#### REAL RATS AND MICE FOR THE SUFFRAGETTES

WASHINGTON, Feb. 1.—The students at the colleges here have organized a stampede of the suffragette parade at the inauguration of President Wilson. It is planned to elect Wilson. It is planned to elect Wilson.

(Continued Page 2)

(Continued Page 2)

(Continued Page 3)

(Continued Page 3)

(Continued Page 3)

Furniture Set FREE



DEEP SORROW

(Continued from Page 1)

Before received by Carl Wideman, Ed Hopkins, Thomas P. Cummings and A. E. Lloyd, depressed but confident that some where in this great city there is room for men of their ability... As they passed down the stairway for the last time as public officials they met and joined in silent communion with A. S. Kabelea, one-time clerk of the plumbing and building inspector, A. St. C. Puanani, who once held a position of honor, profit (not large) and trust in the garbage department. On the street Jim Boyd and John Holt, whose former dominion over the fish market had slipped from them, encountered the process-

DANCERS AT YE LIBERTY TONIGHT

Reverting to the original policy of the Legislature and the Liberty Theater will offer a program of educational interest tonight, and although the feature of the bill is advertised as Hamlin and Mack dancing, another feature that is unusual will be the showing of the United States Senate and President and his cabinet in actual session. This is said to be the first and only moving picture ever taken of these two notable organizations, and is extremely interesting.

A large shipment of flour, feed, beer and general cargo from the west coast of the United States is reported will be brought to the islands in the Matson Navigation steamer Hiloman which sailed from San Francisco for Honolulu yesterday by the way of Seattle.

TARGET PRACTICE DATES ARE FIXED

An order setting the dates for small arms target practice for the various organizations here is soon to be issued from department headquarters. With another regiment of infantry at Schofield, a full regiment instead of a battalion at Shafter, and new troops at Fort Kamehameha and Fort De Russy, the problem of giving every soldier the required amount of rifle and pistol practice requires some careful study.

A rifle range is to be constructed at Kamehameha within the next few months, and the men of Uncle Sam's newest post will do their shooting at home. The coast artillerymen at De Russy will use the Fort Rager range, inside the crater at Diamond Head. The artillerymen do not shoot the full course, their range being 300 yards.

Following is the schedule as given in the order: Schofield Barracks: April 1 to October 31; Fort Shafter: Infantry, April 1 to June 30; Engineers, April 1 to October 31. Fort Ruger: 10th and 150th companies, month of November; 10th company, October 15 to October 31. Fort Kamehameha: Month of November.

**Motorcycle Spill.** Lieutenant Hoffman of the Second Infantry, mounted on his motorcycle at 11 a. m., with an automobile on King street yesterday afternoon, getting a spill and a serious shock as a result. He was taken to the Fort Shafter hospital and is reported as doing nicely, his injuries being painful but not serious.

**General Back Soon.** The board of general officers which convened recently in Washington to consider a plan for army reorganization, adjourned January 15. General Macomb, commanding this department, who was a member of the board, is expected to arrive here on the transport sailing from San Francisco in a few days.

Undoubtedly matters of great interest to Oahu were discussed, but it is understood that the report of the board is mostly confidential.

There will be no transport from Manila to San Francisco this month, the Thomas being delayed at Manila for refitting a propeller blade which dropped off near Guam on the outward voyage.

SOLDIERS PRESSING SUIT AGAINST HORNE

That the members of the military garrison of Oahu are determined not to let their case against Percy Horne, president of the Kamehameha schools go by default is evidenced in the statement of their attorney this morning that steps are being taken to carry the matter to Washington, in an effort to have the military officer now assigned to the schools withdrawn.

Initial steps have already been taken to get the authorities at Washington to take up the statement made by Mr. Horne at a public meeting and later repeated by him for publication, that "the soldiers here are unfit to associate with Hawaiian girls, as they regard local girls as legitimate prey."

"The members of the local garrisons," added Andrews, "are determined not to let this case go by default. It is not that they wish to punish Mr. Horne for his uncalculated insult, but as a protective measure and to defend their own manhood from unjust aspersion from people who in the nature of things should be careful to be accurate in statements made for the public."

FIRST BUILDING OF ROARING CAMP STARTED

Work was this morning begun on the first building to be erected on the site of "Roaring Camp," the reproduction of the "days of '49 in a mining camp" to be presented by the Elks on the Bishop lot on the evenings of February 21 and 22. This building is on King street, at the end of the greensward and is designed to house the automobile that, as one of the features of the Carnival stunt, will be given away by Eugene Bufandeau to some lucky man or woman.

This building goes up first for the reason that opportunity must be given the crowds to get a good look at the fine machine before they try their luck for its possession during carnival week.

PERSONALITIES

F. W. DOHRMANN, the San Francisco merchant, will probably leave for the coast on the next Sierra. ATTORNEY W. T. RAWLINS has been confined to his home for the past week by a severe illness and is still unable to be at his office, though he hopes to be about again in a few days.

LITTLE INTERVIEWS

L. M. STRAUS—Judge Robinson did not approve but disapproved of newspaper comments on cases on trial, particularly where the penalty is death.

AT THE HOTELS

Alexander Young. Mr. and Mrs. Joseph Black, Los Angeles; T. B. Lyons, Walluku, Maui; Mrs. H. W. Carr, Kahului, Maui; Miss Hensley, Kahului, Maui; Mr. and Mrs. Malini, Edmonton, Alb.; Signor Matteo Sandona, San Francisco; E. Bowers, San Francisco; E. W. Cane, Bozota, N. J.; Mrs. J. W. Gibbs, Maywood, N. J.; Miss Edna S. Rice, Los Angeles; Mrs. H. S. Rawlins, Los Angeles; Mr. and Mrs. Frank B. Harbert, Los Angeles; Mrs. Caroline McMillan, Minneapolis; Miss Edith McMillan, Minneapolis; Miss A. V. Martin, Chicago; Miss Beatrice Collins, Seattle.

AT THE ROYAL HAWAIIAN

Mr. and Mrs. H. L. Hall, San Francisco; Mr. and Mrs. T. M. Decker, Sanger, Cal.; C. R. Rock, Mexico City; Mrs. Edith Symonds, San Anselmo; Mrs. C. M. Symonds, San Anselmo; Mr. and Mrs. Herman Ortel, Chicago; Archie Irwin, Hakalau; Mr. and Mrs. J. H. Edwards, Denver; Lloyd Wyatt, Long Beach, Cal.; Miss May E. Moore, Long Beach, Cal.; J. G. Schaefer, Pomona, Cal.

VISITING CLUBWOMAN CONTINUES HER TOUR

After having spent six months in Honolulu, Mrs. Alice A. H. Grawn is leaving on the S. S. Marana, Sunday, for Sydney, Australia. She says the people of Honolulu have been very gracious, and her visit to the islands one round of pleasure. "I will ever hold in remembrance" she says, "the smiling happy Hawaiian people, and carry away much of the romance. The music of the sweet ukulele as it accompanies the native songs puts the stranger into dreamland. I also hold in sweet remembrance Washington Place, the home of Queen Lilioukalanui, and the privilege I had of attending, in company with friends, and other clubwomen from the Coast her birthday anniversary. The two boys, with the royal yellow capes about them, standing behind her chair, and the royal kahilis, with their feathery gorgeousness, standing about her throne, presented a quaint custom, but the sweet face of the Queen, with love for all humanity, beaming with love for us, proved to us all, that her long suffering had made her still more beautiful." May the civic beauty of her ground, prevail throughout all Honolulu, which does, to a great extent, but all element should learn this beautiful lesson of cleanliness, then this city can truthfully be called, one continuous park.

SAYS FIREBUG SET

(Continued from Page 1)

the same house and turned in an alarm. Before apparatus could respond, however, the crew of the combination wagon had killed the flames with the chemical attachment of their rig. The man who was seen creeping out of the house was caught and locked up.

FRESH CASE OF PLAGUE

Another case of plague has been found at Kukuihaele, Hawaii, where one or two victims of the malady were discovered some weeks ago. A w. reless from Health Inspector D. S. Bowman of Hilo, conveying this information to Dr. J. S. B. Pratt, president of the board of health, states that all necessary precautions to safeguard the patient and prevent the spread of the disease have been taken. The situation is not regarded as serious.

ARGUMENTS WILL BE HEARD IN SUPREME COURT

Arguments will be heard in the supreme court next Monday, February 3, on the appeal of the defendants in the case of the Kapolei Estate vs. Mary H. Atcherley et al. Thompson, Wilder, Watson & Lymer and Lyle A. Dickey represent the defendants and S. W. Ashford and Castle and Withington the plaintiff.

There Is An

Exclusive feeling of satisfaction which comes from wearing the class of furnishings that this store offers to the well-dresser.



Our Spring stock is now on display, all equally high quality and standard goods.

BATHROBES, SILK HOSE, and NECKWEAR are immediate specialties

THE CLARION

Phone 2295 Reaches Hustace-Peck Co., Ltd. ALL KINDS OF ROCK AND SAND FOR CONCRETE WORK. FIREWOOD AND COAL. 68 QUEEN STREET. P. O. BOX 219

YOU HAVE TO PAY FOR YOUR BREAD

SO YOU MIGHT AS WELL GET THE BEST LOVE'S BAKERY

For Sale at a Bargain

- No. 1. Rooming house for \$1,100. On car line, near town; 5-minute walk from postoffice. Long Lease. All rooms at present occupied. Furniture in good condition. The income at least \$200 per month.
- No. 2. House and lot 50x100 - O. K. No. 1 yard and location near car line. Reduced from \$2,500 to \$2,000.
- No. 3. 15-year lease. 60x75 stores and lot at Kalia, on car line.
- No. 4. New 5-room cottage 75x150. Hot and cold water, electric light and gas, etc. Price reduced from \$5,500 to \$4,800.

These bargains for a few days only and we have many others. If you call and see us we will put you wise.

HURRY AND BUY DON'T MISS THE CHANCE

CRESSATY'S

Phone 4147 79, Merchant St.

Look Who's Here Spalding & Co. KAIMUKI LOCATORS Phone 4266 For results, list your property with "LIVE ONES;" Thats us.



Hot or Cold Water unless than ten seconds from the same faucet. The K. D. Electric Heater

Patented Dec. 12, 1911. Absolutely guaranteed. Just the sip of a salt-water can.

"K-D" IS JUST WHAT THE DOCTOR ORDERED. He was invented and thought out by a genius because everybody was yelling for him, yelling for hot water just when the fires were all black, because when hot water is needed it is NEEDED right then and there, not a half hour after the need comes for it. The small amount of electric "juice" required to heat water with "K-D" is much cheaper than coal or wood or gas, or gasoline. Then you save time, you save dirtying up the kitchen, you save scratching matches all over the furniture and on those new trousers, you save your bin bones from a crack in the dark in the basement or cellar, and best of all, it is that "K-D" does what we claim he will do. If he don't we will send him back where he came from, and he won't cost you a dime. That's fair, isn't it? Honolulu Branch National Supplies Co. Telephone 4385 Hotel and Union Sts.

YOU! See that Square It may get you a Six-Piece Set of ARE FURNITURE FREE Come to the Green Stamp Store and tell us how many stamps fit in the space. We'll tell you the rest

YOU! Cover this square with Green Stamps WE! want to know the exact number it will hold

YOU! get Green Stamps at nearly all stores Dry Goods YAT LOY, King and Nuuanu SING FAT, Nuuanu at King CANTON DRY GOODS CO., Hotel Anyway tell us the number of Stamps the square holds, and we will tell you how to get the Six - Piece Furniture Set FREE

Honolulu Star-Bulletin

RILEY H. ALLEN

EDITOR

SATURDAY, FEBRUARY 1, 1913

Every country is carved out of the ranks of the unknown, and out of the ranks of those already famous and powerful and in control.

TO THE BUSINESSMAN

The hotels are full. Promotion pays. The automobile men say they are doing the biggest winter business in their history.

SHORT-BALLOT PROGRESS

The general committee which is taking up revision of the city charter made the right move last night toward a safeguarded "recall" plan.

Untermyer, counsel for the committee, engaged in a conversation with Mr. Morgan that is not only interesting to the students of great men, but strikingly significant as an indication of character.

I know lots of men, businessmen, too, who can borrow any amount, whose credit is unquestioned. Is that not because it is believed that they have the money back of them?

The greatest financier of America, if not the greatest financier of the world, has put truth, and honor, and fair dealing, before cleverness, shrewd maneuvering or resort to special privilege.

NEED FOR POLICE SUPERVISION

The Hochi, the new Japanese paper, is taking up a good cause in urging young Japanese men not to loiter around the tea-houses.

As a preventive measure, the city ought to extend its police supervision to these and other gathering-places where drinks may be secured sub-rosa, or else they should be as definitely placed under the watchfulness of a specially-appointed officer as the saloons now are under the license commissioner.

"KNOWLEDGE IS POWER"

The Staffordshire education committee proposes establishing a farm institute with 100 to 200 acres for advanced agricultural education, taking advantage of British board of agriculture grants.

Education is just as valuable in back-to-the-soil as in up-to-the-city movements.

Andrew Carnegie talks against military and naval increases. He talked the same way ten years ago when he was selling his steel for big guns and battleships.

Some day there will be a man here with nerve enough to put his money in cottages instead of sugar. And in two years he will be referred to as a great financier and a capitalist.

CHARACTER AS MORGAN SEES IT

J. Pierpont Morgan is authority for a statement that is a sort of corollary to the old axiom, "A good name is rather to be chosen than great riches."

LETTERS ON TIMELY TOPICS

[The Star-Bulletin invites free and frank discussion in this column on all legitimate subjects of current interest. Communications are published only if they are pertinent and if they do not contain any personal attacks.]

THE VIEW OF A UNION MAN ON THE INTER-ISLAND CONTROVERSY

Editor Honolulu Star-Bulletin: I have read your issue of the 27th with interest and sympathy in the view of a union man on the inter-island controversy.

ANOTHER VIEW OF THE QUESTION

Editor Honolulu Star-Bulletin: In regard to the threatened trouble between the local steamship company and the masters and mates organization, I think that every means should be exhausted to settle the trouble before there is an open rupture.

PROTECT THE CHILDREN

Editor Honolulu Star-Bulletin: The story in the Star-Bulletin last night regarding the little Saunders boy who was badly hurt in some manner in connection with jumping on or off one of the cars of the Rapid Transit is a story that may be repeated any day in the year.

WANTS BETTER BOAT-CREWS

Honolulu, T. H., Jan. 31st, 1913. Editor Honolulu Star-Bulletin: Upon reading Capt. Tillet's article in the Star-Bulletin of Wednesday, the 29th inst., it brought to my recollection an affair which nearly proved disastrous to myself and six other passengers and twenty-one bags of United States mail.

FOR SALE

- COLLEGE HILLS—2 choice residence lots 12,700 sq. ft. each \$1250
OCEAN VIEW—Modern home with all conveniences \$8500
New Bungalow, excellent view \$7000
WILHELMINA RISE—3-room Bungalow \$3000
KAIMUKI—Modern 4-room house, large grounds \$4500
WAIKIKI—Choice building lot, 72x90 ft. \$1750
PAWAA—Modern 1 1/2 story house \$4000
PUNAHOU—6-room house and cottage \$6000
PACIFIC HEIGHTS—3-story modern cottage \$4500
PALAMA—3-bedroom house and lot \$1750
WAIKIKI TRACT—Several choice lots and acreage \$9000

SALE OF CUT GLASS

Consists of a fine assortment of Tumblers, Goblets, High-Ball, Oyster Cocktail, Wine, Sherry and other Glasses

Prices will prove tempting

WICHMAN & CO., Leading Jewelers

that shore near Pukoo. It was not then adequate wages, there could be until the men passengers took the obtained Hawaiian sailors of known capability, instead of the riff-raff which I know are employed on the different vessels of that company.

When You Travel

Affairs involving financial interests and matters requiring expert attention must be left behind.

TRENT TRUST CO., LTD.

Sterling Silver Flat Ware

Will Last a Lifetime. See Our New Patterns. Vieira Jewelry Co., Ltd. The Popular Jewelers, 113 Hotel Street

Henry Waterhouse Trust Co., Limited.

What Is Doing at Kaimuki

THIS IS SOME OF THE WORK MR. ELLSWORTH IS DOING: Graveling and grading 1200 feet on Eleventh Avenue.

SALE OF CUT GLASS. Consists of a fine assortment of Tumblers, Goblets, High-Ball, Oyster Cocktail, Wine, Sherry and other Glasses. Prices will prove tempting. WICHMAN & CO., Leading Jewelers.

When You Travel. Affairs involving financial interests and matters requiring expert attention must be left behind. This company will be pleased to act as your agent and will handle all matters with wisdom and economy. TRENT TRUST CO., LTD.

Sterling Silver Flat Ware. Will Last a Lifetime. See Our New Patterns. Vieira Jewelry Co., Ltd. The Popular Jewelers, 113 Hotel Street.

Henry Waterhouse Trust Co., Limited. What Is Doing at Kaimuki. THIS IS SOME OF THE WORK MR. ELLSWORTH IS DOING: Graveling and grading 1200 feet on Eleventh Avenue.

Henry Waterhouse Trust Co., Limited. CORNER FORT AND MERCHANT STREETS. WE HAVE FOR SALE IN THIS VICINITY: House and lot, Park Avenue, Kaimuki \$2750

GUARDIAN TRUST CO., Ltd., SECOND FLOOR, JUDD BUILDING



FIRE LIFE MARINE AUTOMOBILE Tourist Baggage and Accident Insurance

Castle & Cooke, Ltd. Agents Honolulu

Alexander & Baldwin Limited Sugar Factors Commission Merchants and Insurance Agents

C. Brewer & Co. Limited SUGAR FACTORS, SHIPPING AND COMMISSION MERCHANTS, FIRE & MARINE INSURANCE

Fire Insurance THE B. E. Dillingham Co. LIMITED

FIRE! If Honolulu were again swept by a conflagration, could you collect your insurance? C. Brewer & Co., Ltd.

The Man Who Wants To Be Married

but feels that he "hasn't the price" is a man to be pitied. Happy the man who, in his youth was wise enough to look forward to the needs of manhood, to start a savings bank account and to acquire the saving habit.

Bank of Hawaii, Ltd. Capital-Surplus \$1,200,000

Established in 1858 BISHOP & CO. BANKERS

Commercial and Travelers' Letters of Credit issued on the Bank of California and The London Joint Stock Bank, Ltd., London.

Correspondents for the American Express Company and Thos. Cook & Son.

Interest allowed on Term and Savings Bank Deposits.

We have sold our 20 per cent investment advertised last week and now offer a FURNISHED Five-Room Bungalow on Waiialea Road

\$3000 Bishop Trust Co., Ltd. 924 Bethel Street

BANK of HONOLULU LIMITED

Issue K. N. & K. Letters of Credit and Travelers' Checks available throughout the world.

Cable Transfers at Lowest Rates

THE YOKOHAMA SPECIE BANK, LIMITED. Head Office: Yokohama Honolulu Office: Bethel and Merchant Sts.

Capital Subscribed... 48,000,000 Capital Paid Up... 30,000,000 Reserve Fund... 17,850,000

"The Everyday Article" in Furniture at BAILEY'S

Victor Records BERGSTROM MUSIC CO. Odd Fellows' Block Fort St.

Honolulu Stock Exchange

Table with columns: NAME OF STOCK, Bid, Asked. Includes Mercantile, Sugar, and Miscellaneous sections.

SALES. Between Boards—10 Pioneer 26 1/2, 100 Oiaa 4 1/2, 5 Hon. B. & M. Co. 24 1/2

Dividends. Feb. 3—Haiku 50, Paia 50, Pioneer 20, Kekaha 1.00.

Note. Kekaha dividend listed yesterday, Jan. 31, by error.

Sugar 3.48cts Beets 9s 6d

MENRY WATERHOUSE TRUST CO Exchange. Members Honolulu Stock and Bond

J. F. Morgan Co., Ltd. STOCK BROKERS Information Furnished and Loans Made

Giffard & Roth STOCK AND BOND BROKERS

Members Honolulu Stock and Bond Exchange

E. G. Duisenberg STOCKS BONDS REAL ESTATE INSURANCE

For GENERAL OFFICE STATIONERY and FILING SYSTEMS call or write to us and we will fill your wants.

Jesse K. Kane and others were yesterday made defendants in an action filed in the circuit court by Thomas J. Carter and others.

Individual drinking cups are recommended for children everywhere.

LOCAL AND GENERAL

Have you tried Radium Spray this morning. Advertisement.

Dickerson, The Leading Milliner, 1148 Fort. New Spring Shapes. Advertisement.

Visit Blom's store, corner Fort and Hotel, and note the tremendous clearance bargains. Advertisement.

Valentines in great variety at A. B. Arleigh & Co.'s. Advertisement.

Blom's great clearance sale began at 8 o'clock this morning. Advertisement.

Wanted—Two more passengers for around - the - Island at \$6.00. Advertisement.

If you require show cases of any description, see George V. Jakins, 75 Beretania street. Advertisement.

The latest Spring models in millinery are being shown by Milton & Parsons. Advertisement.

Crushed algaroba protein makes chickens lay more eggs, also makes cows give more milk. Advertisement.

The Hawaiian Band will play this afternoon at the opening of the new library. Advertisement.

Collectors of Green Stamps are entitled to a chance free on a whole room full of furniture. Advertisement.

Genuine Kryptok bifocal lenses furnished promptly. Advertisement.

All members of the Kamehameha Alumni Association are requested to attend the funeral of their late brother Alexander K. Lewis. Advertisement.

Mary Aki Lee Wing yesterday was granted a divorce from Lee Wing by Judge Whitney. Advertisement.

Hawi Mill & Plantation Co., Ltd., has become the owner of within fifty shares of half the capital stock of the Hawaii Railroad Co., Ltd.

The DENIO SYSTEM, in case of a fire, does all the following things for you in less than ten seconds.

BE IT RESOLVED by the Board of Supervisors of the City and County of Honolulu, Territory of Hawaii.

BE IT RESOLVED by the Board of Supervisors of the City and County of Honolulu, Territory of Hawaii.

BE IT RESOLVED by the Board of Supervisors of the City and County of Honolulu, Territory of Hawaii.

BE IT RESOLVED by the Board of Supervisors of the City and County of Honolulu, Territory of Hawaii.

BE IT RESOLVED by the Board of Supervisors of the City and County of Honolulu, Territory of Hawaii.

BE IT RESOLVED by the Board of Supervisors of the City and County of Honolulu, Territory of Hawaii.

BE IT RESOLVED by the Board of Supervisors of the City and County of Honolulu, Territory of Hawaii.

BE IT RESOLVED by the Board of Supervisors of the City and County of Honolulu, Territory of Hawaii.

BE IT RESOLVED by the Board of Supervisors of the City and County of Honolulu, Territory of Hawaii.

BE IT RESOLVED by the Board of Supervisors of the City and County of Honolulu, Territory of Hawaii.

BE IT RESOLVED by the Board of Supervisors of the City and County of Honolulu, Territory of Hawaii.

BE IT RESOLVED by the Board of Supervisors of the City and County of Honolulu, Territory of Hawaii.

HOW IS YOUR HEALTH? Feel poorly most of the time—stomach bad—appetite poor—all rundown? You should try

Hosletter's Stomach Bitters at once. It has helped thousands who suffered from SOUR STOMACH INDIGESTION DYSPEPSIA MALARIAL DISORDERS

For sale by Benson, Smith & Co., Ltd., Chambers Drug Co., Ltd., Hilo Drug Co. and at all wholesale liquor

BY AUTHORITY SEALED TENDERS.

Sealed tenders will be received by the Superintendent of Public Works up until 12 noon of Monday, March 3, 1913.

Plans, specifications and blank forms for proposal are on file in the office of the Superintendent of Public Works, Capitol Building.

The Superintendent of Public Works reserves the right to reject any or all tenders.

H. K. BISHOP, Superintendent of Public Works. Honolulu, February 1, 1913. 5459-10t.

SEALED TENDERS.

Sealed tenders will be received by the Superintendent of Public Works up until 12 noon of Wednesday, February 12, 1913.

Plans, specifications and blank forms for proposal are on file in the office of the Superintendent of Public Works, Capitol Building.

The Superintendent of Public Works reserves the right to reject any or all tenders.

H. K. BISHOP, Superintendent of Public Works. Honolulu, February 1, 1913. 5459-10t.

RESOLUTION NO. 8.

BE IT RESOLVED by the Board of Supervisors of the City and County of Honolulu, Territory of Hawaii, that the following sums amounting to Twenty-seven Hundred and Twenty-five and 57/100 (\$2725.57) Dollars be and the same is hereby appropriated out of the General Fund of the Treasury of the City and County of Honolulu for the following accounts:

Table with columns: Account Name, Amount. Includes Maintenance of Roads Honolulu District (Repairs Parker Lane), Maintenance of Roads Honolulu District (Repairs Pua Lane), etc.

Approved this 30th day of January A. D. 1913. JOSEPH J. FERN, Mayor.

RESOLUTION NO. 7.

BE IT RESOLVED by the Board of Supervisors of the City and County of Honolulu, Territory of Hawaii, that the sum of Six Hundred and Twenty Dollars and Ten Cents (\$620.10) be and the same is hereby appropriated out of all moneys in the General Fund of the Treasury for an account known as "Treasurer, Material and Supplies."

Approved this 30th day of January A. D. 1913. JOSEPH J. FERN, Mayor.

FOR SALE.

5-room house, close to car, Kaimuki, furnished, handsome interior finish, bargain for \$3,000.

Waldeyer & Whitaker, Cor. Hotel & Union Tel. 4385

W. C. ACHI, ATTORNEY AT LAW Kapiolani Building Honolulu, T. H. P. O. Box 606.

Everything in the printing line at Star-Bulletin, Alakea street; branch, Merchant street.

WALL & DOUGHERTY. Valentine and Easter Cards and Stationery. Hand Painted Dinner and Place Cards. Eaton, Crane and Pike's STATIONERY for Personal Correspondence. Dies correctly designed and Executed.

Exclusively for Ladies Shoe Repairing Works. In connection with our up-to-date Shoe Repairing Works we have an attractive shoe-shining parlor exclusively for ladies where the best of shines will be given by courteous attendants. HAWAII SHOE REPAIRING WORKS UNION ST. NEARLY OPPOSITE YOUNG HOTEL.

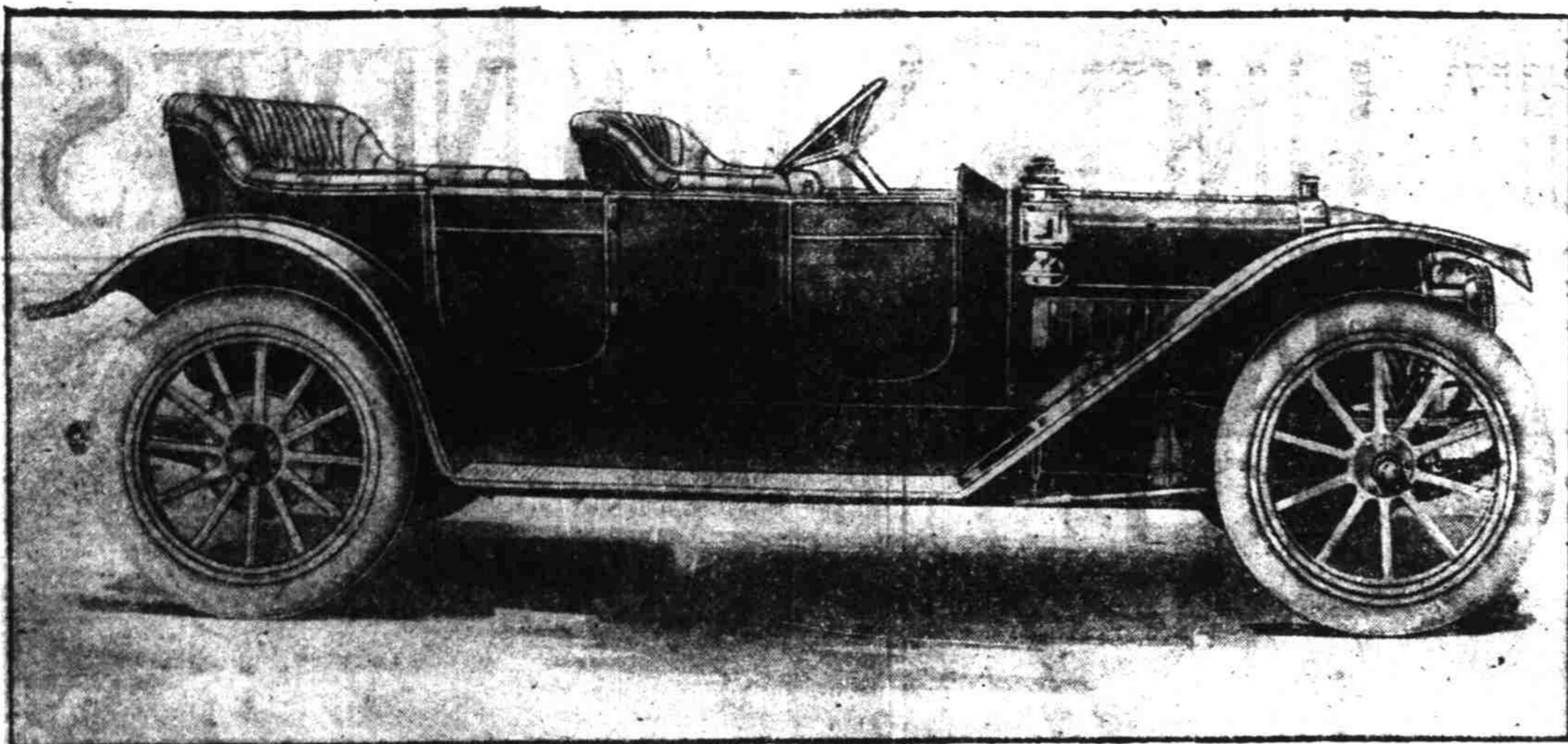
Union-Pacific Transfer Co. Limited. This ad is kapakahi but when your furniture is handled by the

Australian Butter. WE HAVE A SUPPLY OF THIS GREAT BUTTER AND CAN OFFER YOU SOMETHING CHOICE IN STEAKS AND JOINTS.

Metropolitan Meat Market HEILBRON & LOUIS, Props. TELEPHONE 3448

NEW ARRIVALS WOOLEN SHIRTS, PAJAMAS AND SWEATER COATS. CANTON DRY GOODS CO., HOTEL ST. OPPOSITE EMPIRE THEATRE

STAR-BULLETIN \$ .75 PER MONTH



# THE 1913 Regal Under Slung

FULLY EQUIPPED

Stood the test of a climb on a 50 per cent grade

Call and Inspect Our Stock

## H. E. HENDRICK, LTD.,

Exclusive Island Distributors.

Corner Merchant and Alakea Streets.

# MOTOR REPAIRING

A little care regularly will keep your motor in first-class order.

We have a motor expert whose sole business is looking after motors.

Let us inspect your motor regularly, instead of waiting for a breakdown. Our fee is reasonable and we will save you time, worry and money.

We are the best-equipped shop for handling motor trouble and doing motor work of all kind.

## Honolulu Electric Co.,

COR. BISHOP AND KING STS.

FOR SALE  
**A & A**  
83  
MERCHANT ST.

Let us know where you want your home. A sale today means a friend tomorrow.

BEST LAUNDRY WORK AND DRY CLEANING

### FRENCH LAUNDRY

J. ABADIE, Prop.

777 King Street.

Phone 1491

STAR-BULLETIN \$ .75 PER MONTH

## CHARTER COMMITTEE CHANGES PLAN OF RECALL; WILL BE HARDER

Proposed Features Vigorously Discussed at Meeting Last Night

Materially increasing the difficulty of the recall and making other important changes in the preliminary draft of the proposed city and county charter, the general committee of thirty-three now working on a plan for short-ballot government held a lengthy meeting last night in the senate chamber, executive building.

A variety of opinions on every important point was presented and the discussion ran to such lengths that finally the committee adjourned until Friday evening, after having gone over less than one-third of the preliminary draft as printed and submitted for discussion.

Governor Frear called the meeting to order and the committee shortly went into committee of the whole with Mayor Joe Fern in the chair. John Effinger was secretary. Judge W. L. Whitney, chairman of the sub-committee on drafting, was kept busy explaining what the committee had done until finally the members got warmed up to the discussion, and after that the judge sat back and let them talk it out.

Four general features of the proposed charter were all that the committee was able to take up last night, and the last was not finished. Several matters of detail were specifically settled, such as the name—City and County of Honolulu—and the usual powers inhering in municipalities.

The first bit of discussion came over the definite enumerating of the various public utilities that the city would have power to condemn and take over. Finally water and sewer works, electric light plants and gas works, telephone, street railroad systems, power plants and other public utilities were included by name.

**Preferential System Liked.** Next came the proposed plan of election, and here a wide diversity of opinion on detail existed, although practically everyone spoke for some direct primary plan. Dr. Scudder, W. A. Bryan, T. M. Church and others favored the plan of a preferential election system, doing away with the old-time primaries and making every vote count. Under this plan, the voter casts a ballot directly for the candidate he favors, for his next choice for the same office and for his third choice, and in making up the returns, if the first-choice votes do not elect a certain man, his votes as a second choice are added and possibly also as a third choice. This is one of the several preferential systems, and the committee last night did not decide upon any one, though favoring some preferential system and leaving the details up to the drafting committee to work out and present again.

**New Recall Plan.** Next the committee tackled the recall and here there was wider difference of opinion than on anything else. However, from the first it was plain that the drafting committee's proposal of twenty per cent of the vote for election in operation was not going to stand. Mr. Church even moved for fifty per cent, and W. R. Farrington amended to make the figure forty per cent. Several members declared that the recall should not be made easy, and finally a compromise was adopted. This compromise calls for a plan under which thirty per cent of the vote for any candidate sought to be called must be signed to petitions for a recall election. The petitions must be individual documents and not "blanket petitions" and must be signed in the office of the city and county clerk. It is held that the necessity of going to the office of the city and county clerk and signing the petition there will prove a limitation on the use of the recall and check hasty action of the work of a small, factional minority.

Having settled this, the committee then got to a point where it quickly made little progress except in the frank discussion. This was as to the matter of electing commissioners. Under the plan proposed by the sub-committee, there are to be five commissioners, each elected to a specific office. Thus, one is to be elected head

of public affairs and as ex-officio mayor, one for the department of finance and supplies, one for highways, one for health and one for water and sewers.

Governor Frear opposed this plan flatly. He argued, and in support of his argument, quoted from municipal authorities to show that what was needed was a commission of all around men and that they should choose the experts to handle the technical details while they were left free to determine broad policies.

Mr. Church also vigorously opposed the plan as submitted. He told the committee that he was one of a little group of "nineteen hard-headed-business men" who have been studying municipal government recently, and that they favor the city manager plan. Mr. Church inclined to the Grand Junction, Col., idea of organization.

**Whitney Takes Issue.** Judge Whitney here got back into the discussion with a rush.

"With due respect to the governor," he said, "I am first, last and all the time against his plan of commissioners elected without reference to specific duties. The very essence of success in the short-ballot plan of government is being able to put your finger on your public official and hold him absolutely and finally responsible for neglect of duty. To do this, we want to elect men to perform specific functions. We don't want to name men generally, let them divide up the work and then throw all the blame of some one else when things go wrong."

Judge Whitney's ideas were quickly followed by those of other members and the debate became general and prolonged. Several motions and amendments were offered and finally the committee adjourned at 10:30 o'clock without having settled this important point.

Chairman R. W. Shingle of the Republican territorial central committee, also a member of the charter committee, declared himself heartily in favor of the commission or short-ballot plan, but he pointed out to the members last night that to load down the charter with too many "model" ideas will inevitably cause its rejection by the legislature or the electorate. S. P. Correa, Chairman Pacheco of the Democratic territorial committee and others also opposed trying to make sweeping changes without a campaign of education among the voters.

Secretary John Effinger heartily advocated submitting the whole plan to the people after a thorough educational campaign, a point that seemed well taken.

One of the matters taken up last night was that of giving representation to the Democratic county committee, a point which had hitherto been overlooked because, as the governor says, several Democrats who were consulted prior to the organization of the committee thought the territorial party should be represented.

Mr. Pacheco brought the matter up and it was promptly decided to give the county committee a representation also.

Several interested citizens occupied chairs in the rear of the room, among them being Supervisor Lester Petrie and William Thompson. Mr. Thompson asked leave to speak when the recall was under discussion, and talked against an easy way of getting a recall election. He hardly favors the recall now, he said, but if the recall was adopted as a feature, certainly it should be well safeguarded.

Physical Directress Margaret Christy Tupper has announced that on February 15 a water carnival will be held at the Castle tanks at Waikiki. There will be swimming races, exhibition swimming and diving, and other water sports which will be taken part in by about sixty members of the association. Prizes will be awarded the winners and there will also be a musical program and refreshments. Each member of the association will be privileged to invite two friends.

The foreclosure sale of the Middle-ditch property, advertised for 12 o'clock today, has been postponed for two weeks.

# Crystal White

THE "BILLION-BUBBLE"

## LAUNDRY SOAP



It makes the clothes so much whiter

For Sale at All Grocers

# Honolulu Invited To Our Opening To-Day

10 a. m. to 9.30 p. m.

MUSIC 2 to 5 and 7 to 9 o'clock

A Trial Bottle of the Celebrated

## Mary Garden Perfume

will be given

Free to Lady Customers

# Hollister Drug Co.,

Limited.

Management of A. W. Myer and A. J. Gignoux

# FORT KAMEHAMEHA, UNCLE SAM'S NEWEST

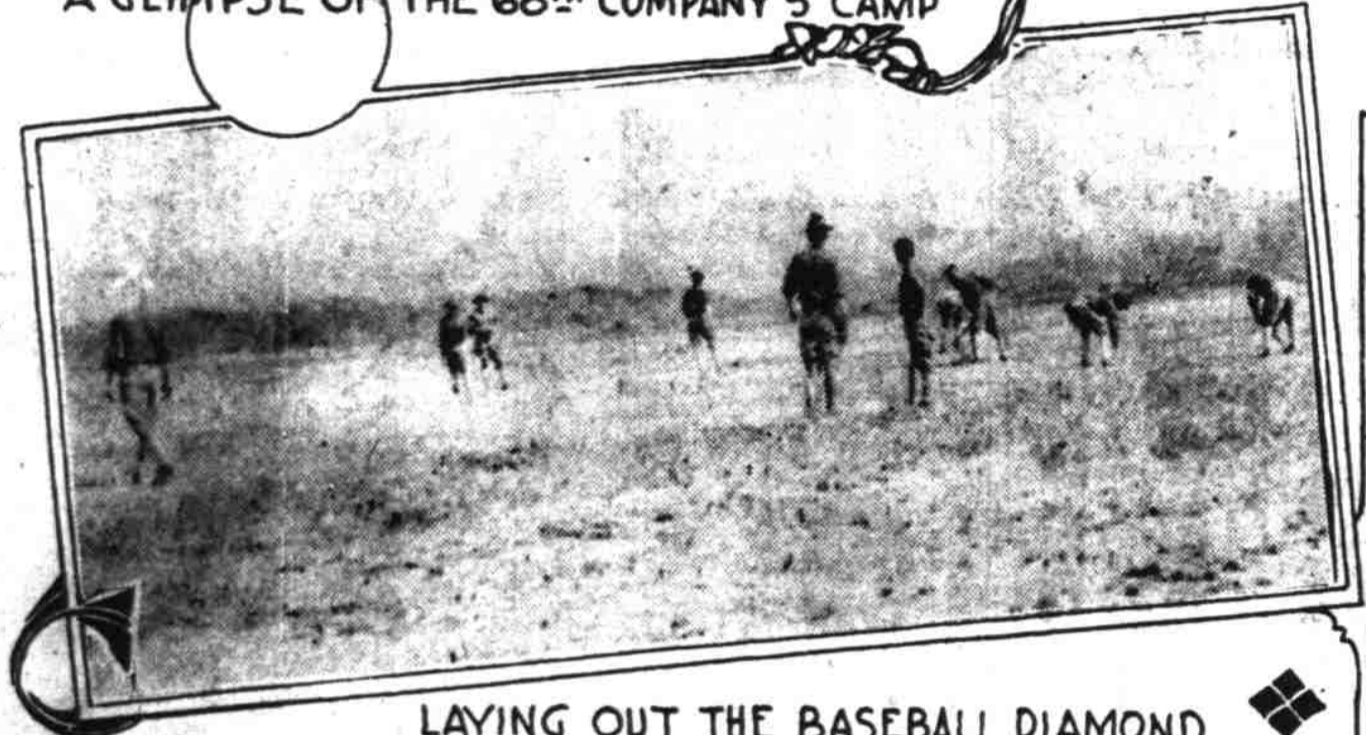
## PERMANENT POST



A GLIMPSE OF THE 68TH COMPANY'S CAMP



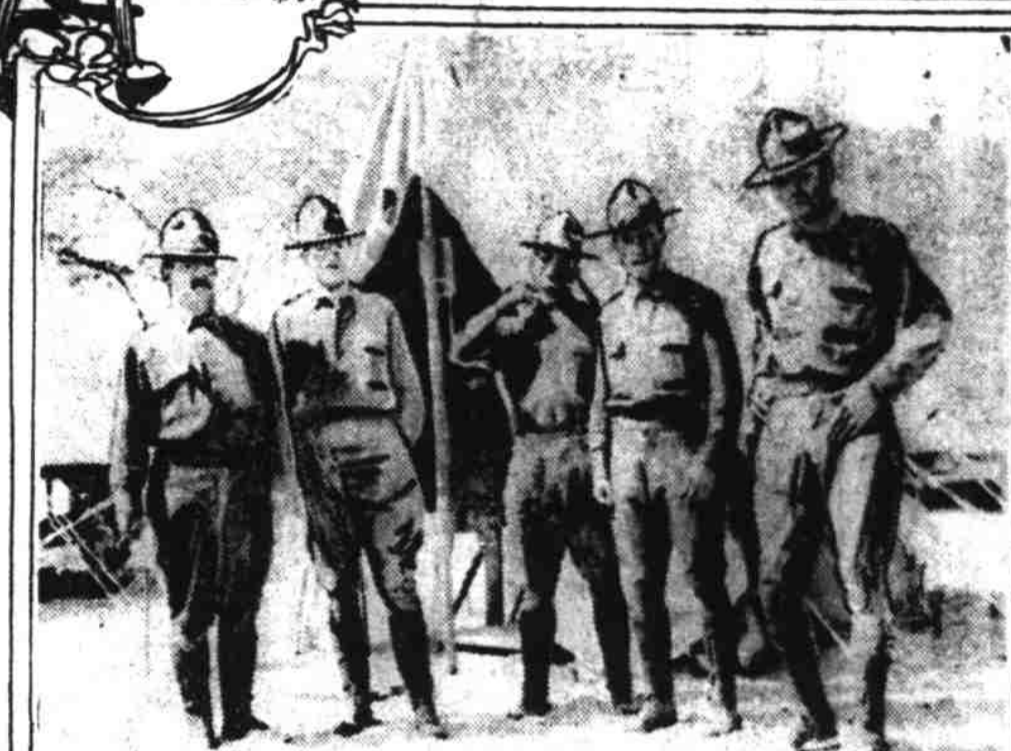
CAMP OF THE 75TH COMPANY



LAYING OUT THE BASEBALL DIAMOND



CAPT. G. A. TAYLOR—POST COMMANDER.



OFFICERS OF THE NEW POST



CHANGING THE GUARD AT KAMEHAMEHA

IF ANYONE who had visited Fort Kamehameha on the first day of January, took another trip to the Pearl Harbor post today, he would have to rub his eyes and look for familiar landmarks to make sure that he was in the same place. In one short month the place has been transformed from a waste of sandy scrub to a model camp site, with two miniature towns of canvas, located about a mile apart. Post headquarters and the tents of all the officers are located at the camp of the 68th company, on the Watertown side of the reservation, while the camp of the 75th is in the general direction of the ocean, some distance removed. Between the two is a parade ground and baseball diamond, now in course of construction. All in all, Fort Kamehameha is far from being the uninviting spot where the coast artillery men were dumped, bag and baggage, three weeks ago.

Fort Kamehameha just at present has the distinction of being the most recently garrisoned permanent post in the service. Old Fort McHenry, in Baltimore, during the bombardment of which Key wrote the Star Spangled Banner, has recently been given up as a garrisoned post, and Kam steps into the vacancy.

The 68th and 75th companies of coast artillery compose the present garrison, the former being from Fort Baker, Cal., and the latter from Fort Moseley, Ala. The 75th was formerly at old Fort Preble, Me. The voyage to Honolulu was the first trip on a transport for some time, for the 68th company. In fact, it has not crossed the ocean since September, 1901, nearly twelve years ago, when as a battery, of the old Sixth Artillery, it returned from the Philippines on the transport Meade. The 68th company is now commanded by Captain G. A. Taylor, C. A. C., who is also in command of the post, and the 75th company by Captain Clifford Jones, C. A. C. Both captains joined their commands just prior to sailing from San Francisco. Captain Taylor being "Mancru" as adjutant of the artillery district of Baltimore, and Captain Jones as an instructor at West Point.

The first night at Kamehameha was spent in "pup" tents and the mosquitoes and fleas vied with one another in extending a welcome, according to all accounts. However, it did not take long to shake down after the camp equipment arrived, and the command is now busy in the usual routine of garrison duty, officers' schools, gunners' instruction, etc. Everyone is looking for news of the Kamehameha barracks and quarters appropriation, and when congress passes it, the last recruit will have reason for rejoicing.

Everyone seems to have a good word for Honolulu, and in the completion of the road, the fine new road, and carline, there will be a new show piece on the island of Oahu. A commitment of trees from the experimental station has already been received and before long a little landscape gardening will be begun.

First Lieutenant V. E. Clark is adjutant and quartermaster; First Lieutenant Edward L. Kelly, ordnance officer and artillery engineer; Second Lieutenant Charles R. Baxter, post exchange officer; First Lieutenant Robert C. McDonald, M. C., surgeon. Second Lieutenant H. E. Ellis is on duty with the 75th company, completing the commissioned performed of the post.

The post hopes to make a creditable showing in the big military field day at Kapiolani Park on Washington's Birthday, and the contestants are being looked after by Lieutenant Clark and Captain Taylor, the former of whom is a former Naval Academy football player, and the latter of whom took part in athletics at Brown University.

The house committee has unanimously decided to recommend a government appropriation of \$2,000,000 for building an equipage a government building at the world's fair in 1915.

The officers in the group picture, reading from left to right, are Captain Taylor, Captain Jones, Lieutenant Clark, Lieutenant Kelly and Lieutenant Ellis.

The house committee has unanimously decided to recommend a government appropriation of \$2,000,000 for building an equipage a government building at the world's fair in 1915.

Lieutenant Sheridan is at present at Fort Huachuca, where the Fifth Cavalry arrived last week and the time of his return to Honolulu is not yet known but it is likely that the young officer will return in a very short time and that the home of Colonel McGunagle, which was formerly King Kalakaua's hunting lodge will be the scene of a double military wedding in the very near future.

Captain Thomas' quarters were beautifully decorated with fragrant American beauty roses for the affair yesterday afternoon and during the receiving hours the First Infantry Band rendered a well selected program. Mrs. Thomas and her mother, Mrs. White, received the callers and made the announcements while Mrs. Alfred Aioe and Mrs. Phillipson received with Miss McGunagle and Miss Smith.

Mrs. W. C. Hobby entertains. On Friday Mrs. W. C. Hobby entertained at a prettily appointed luncheon for her mother, Mrs. Evan T. Warner. Covers were laid for ten, including Mrs. Evan T. Warner, Mrs. B. F. Dillingham, Mrs. W. O. Smith, Mrs. J. B. Aikman, Mrs. Frederick J. Lowrey, Mrs. C. H. Dickey, Miss Mary Alexander, Mrs. H. P. Baldwin, Mrs. E. I. Shepherd and Mrs. W. C. Hobby.

Parties having rooms to let in private homes, either with or without board, will please communicate with the Hawaii Promotion Committee—advertisement.

### Bijou Theatre

**Extraordinary Announcement!**

OWING TO UNUSUAL PREPARATIONS NECESSARY TO THE PRODUCTION OF "ALIAS JIMMY VALENTINE," THE BIJOU THEATRE WILL BE CLOSED MONDAY AND TUESDAY.

**Opening Wednesday, Feb. 5th,**

WITH

## Alias Jimmy Valentine

THE GREATEST PLAY

ADVANCE SALE OF SEATS AT BIJOU & THEATRE.

Prices for This Engagement Only:

**\$1.00, 75c, 50c and 25c**

### Ye Liberty Theatre

**VAUDEVILLE TONIGHT**

ALL NEW SHOW

**Hamlin & Mack**

SEE THE PICTURES OF THE

**U. S. Senate**

AND

**Taft's Cabinet**

IN ACTUAL SESSION

PRICES 5c, 10c, 15c, 25c, and 30c

### SOCIETY

**Double Engagement Announced At Schofield; Will be Followed in a Short Time by Double Wedding**

A delightful surprise was given the military folk of Schofield Barracks Tuesday afternoon when at the reception at the quarters of Captain and Mrs. John R. Thomas, Jr., the engagement of the belles of the garrison were announced to two of the most popular of the army officers stationed on Oahu. The engagement of Miss Isabel Ray McGunagle, daughter of Colonel George McGunagle, First Infantry and department commander, to Lieutenant Phil Sheridan, Fifth Cavalry, was announced, and also that of Miss McGunagle's guest, Miss Josephine Smith, to Lieutenant Joseph Andrews, First Field Artillery. The announcements created quite a stir in the post and the officers and ladies from the post as well as many of those from Honolulu called during the afternoon and showered congratulations upon the happy young bride-to-be.

Miss McGunagle arrived at Schofield in the early part of last summer and since that time has been one of the leaders among the younger folk at the garrison. Miss Smith who accompanied the Colonel's daughter is also one of the most popular young ladies at Schofield.

Lieutenant Sheridan is at present at Fort Huachuca, where the Fifth Cavalry arrived last week and the time of his return to Honolulu is not yet known but it is likely that the young officer will return in a very short time and that the home of Colonel McGunagle, which was formerly King Kalakaua's hunting lodge will be the scene of a double military wedding in the very near future.

Captain Thomas' quarters were beautifully decorated with fragrant American beauty roses for the affair yesterday afternoon and during the receiving hours the First Infantry Band rendered a well selected program. Mrs. Thomas and her mother, Mrs. White, received the callers and made the announcements while Mrs. Alfred Aioe and Mrs. Phillipson received with Miss McGunagle and Miss Smith.

### FERNANDEZ BABES IN DANGER OF WANT

The three children of Manuel Mascoto Fernandez, murderer and would-be suicide, who now lies in the Queen's hospital on a fair way to recovery, are likely to be deprived of the death benefit in case their father is convicted and serves the penalty for his crime.

The question of the fate of Fernandez is being discussed at the present time by the two beneficial societies in which he holds membership benefits. In case Fernandez dies, which is not now likely, from wounds which he inflicted upon himself, it is said that these societies would at once pay the death benefits to the children, one of \$1500 and the other \$1700, making a total of \$3200 to be divided among the three children. On the other hand, it is said that if Fernandez lives to be tried for his crime, he would be expelled by the societies under their laws relating to felons, thus depriving the children of the death benefits in case that he is executed for his crime.

The three children—George, aged three; Mabel, ten, and Mary, six, are now being cared for at the home of their grandparents, and there is a deep sympathy in the societies for them. It is thought that even though their father be expelled from the societies, that some provision will be made for them through the general assemblies of the organizations to whom the case will probably be referred.

On account of the illness of W. T. Rawlins, founder of the Waikiki regatta for the Mid-Winter Carnival, John Wise has been chosen by the Carnival officials to take charge of this feature, which will be the most interesting spectacle of the entire week. It is expected that Mr. Wise will work in cooperation with the committee that was appointed by Mr. Rawlins.

**BORN.**  
McGUIRE—In Honolulu (Kapiolani Park), January 31, 1913, to Mr. and Mrs. Jas. W. L. McGuire, a daughter.

# WOODLAWN

IS THE MOST DESIRABLE OF ALL MANOA SECTIONS

An unusually attractive spot on which to build a home.

You have water piped to an elevation of 450 feet; you have an unobstructed view of the ocean and you are on the slope of a hill that suggests a Swiss Chalet for a home.

We can think of no more pleasurable spot; none that compares with it as

## A PARADISE FOR HEALTH

and where one may live in the full enjoyment of absolutely pure air.

The means of getting there are excellent because the roads are good and the walk to the street-cars is a short one.

You are invited to inspect the lots. One acre each, \$1000. Payable a third cash, a third in twelve months and balance in two years.

### Chas. S. Desky,

Fort near Merchant Street



NEWS OF EVERY FIELD FULLY COVERED

SPORTS

THE TRUTH ABOUT SPORT IS NEVER A KNOCK

ALL-DAHUS TAKE ON CHINESE TOMORROW

'Bill' Desha's Picked Team Will Make Last Effort to Break Winning Streak of Manager Ho's Charges—Game Should Draw a Big Crowd

Considering the thrilling engagement between the All-Oahu and All-Chinese ball teams last Sunday, in which the Chinese pulled the game out of the fire in the final frame, in sensational style, the second meeting between the two aggregations tomorrow should bring the crowd.

The game will be called at 3 o'clock, at Athletic Park, and if the weather holds good, some attendance records are likely to be shattered.

Barney Joy will be in the box for the Pinks, while Apau Kau will hurl his famous spitter in the general direction of the plate. A pitching duel between these big fellows promises entertainment.

The line up of the teams will be as follows: All-Oahu—Schuman, c; Barney Joy, p; Alek. Desha, 1b; Franco, 2b; Markham, 3b; Bushnell, ss; D. Desha, rf; Bill Desha, (captain), cf; Hampton, lf.

All-Chinese—Kan Yen, c; Apau Kau or Luck Yee, p; Al. Akana, (captain), 1b; Ah Lee or Asam, 2b; Lai Tin, 3b; Y. Ayan, ss; Sing Hung, rf; En Sue, cf; L. Akana, lf.

FORECASTS.

If the two beefy fellers show up as they did last Sunday, the fans will have no kick to register.

At Athletic Park tomorrow afternoon, Captain Heine Berger and the Hawaiian band will be the whole show between acts.

If Big Barney Joy should take an avianch by, it's a cinch that Bushnell will step in the box for the All-Oahus.

'Chief' Akana, the Chinese outfielder and slugger, is being hard pressed for batting honors by two of his colleagues.

Captain Bill Desha of the All-Oahus promised to give the All-Chinese team a good run for their money.

Umpire Bert Bowers will call the game tomorrow at three o'clock.

Watch the beauties in all their glory on the grandstand.

Since last Sunday's game, three players have not caught a single ball. Thus are Henry Chillingworth, Outfielders En Sue and Sing Hung, and here's hoping that their injuries will be healed soon.

BOATMEN BEAT BILLIARDISTS

Table with columns: P., W., L., Pct. for Myrtle's Bowling League.

After dropping the first game the Myrtles came back and took the next two from the Brunswick-Balkes. The second string was won by a single pin, and it took a deal of figuring on the score sheet to determine which side of the fence the advantage lay.

Table with columns: Name, P., W., L., Pct. for Myrtle's Bowling League.

Watch the Myrtles!!!

What with cripples, dummies, and 'blind' bowlers, that was sure some match last night.

'That one pin.'—The Goat.

'I sure was lucky last night.'—Harris.

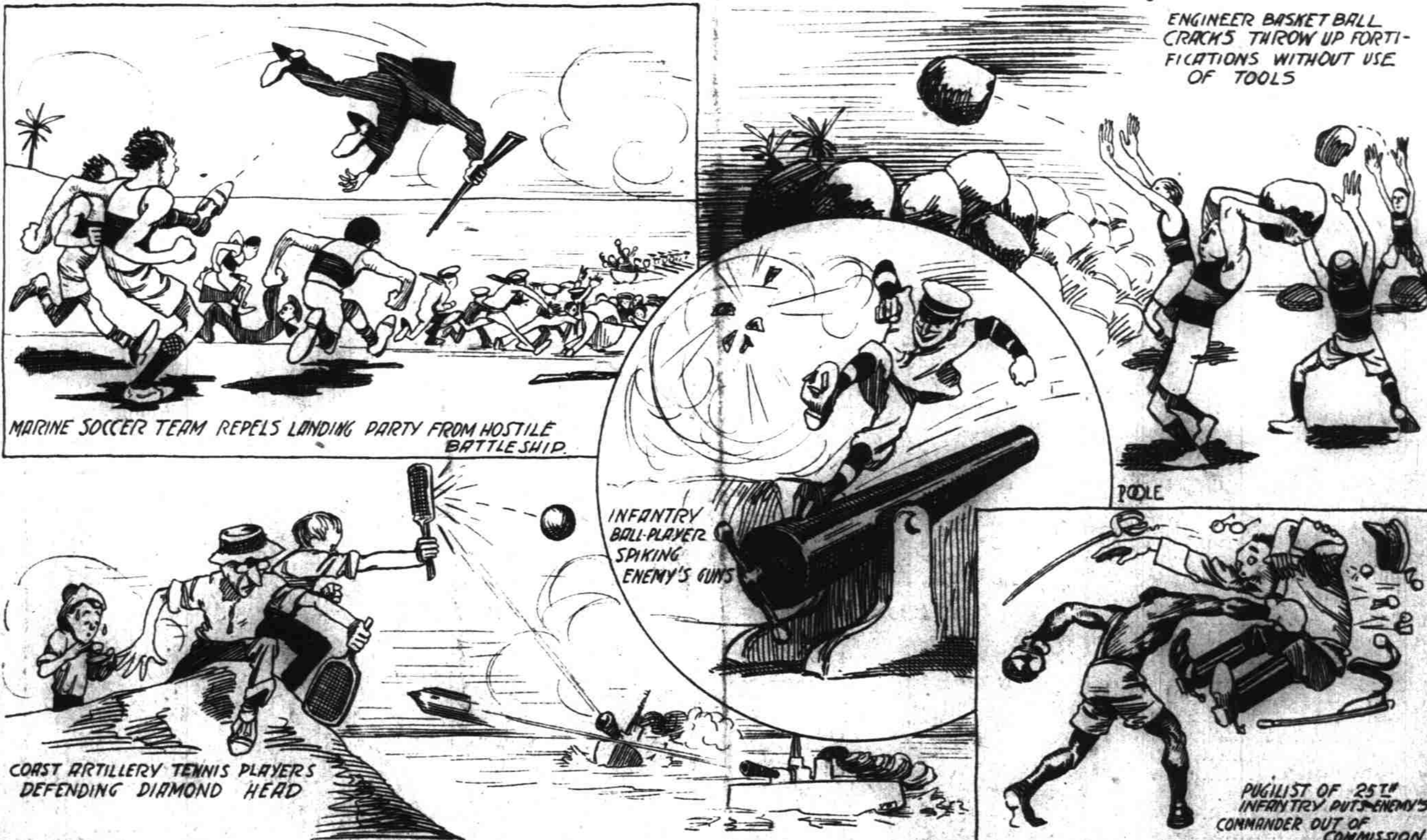
'You don't think our fellows will bowl like that all the time, do you?'—Franklin.

Kinslea had both high score and average for the Myrtles 210 and 188.

'We've THEE team, I tell you.'—Edgecomb.

'We got you on total pin-fall any how.'—Honey.

Why Not This If Oahu Is Invaded?-----By Poole



MARINE SOCCER TEAM REPELS LANDING PARTY FROM HOSTILE BATTLESHIP

INFANTRY BALL-PLAYER SPARKING ENEMY'S GUNS

COAST ARTILLERY TENNIS PLAYERS DEFENDING DIAMOND HEAD

ENGINEER BASKET BALL CRACKS THROW UP FORTIFICATIONS WITHOUT USE OF TOOLS

POOLE

PUGILIST OF 25TH INFANTRY PUTS ENEMY'S COMMANDER OUT OF COMMISSION

KENTUCKIAN SAYS RACER BEST SIRE FOR CAVALRY REMOUNTS

BY JOHN E. MADDEN. In breeding the horse for the army remount and artillery service there appears to be a vast difference of opinion in selecting a class of mares most suitable for the purpose. Some of the views are good in theory but not practical. In the main we must depend on the farmers throughout the country to furnish the number that will be required, and the mares available are those now in the possession of the farmers, for in time of war there will be for thousands. The government alone cannot supply them, therefore it will be well for the government to be liberal in fixing the price that it will be willing to pay for horses in order to make it an inducement to the farmer to raise them.

We must trust to a judicious selection of the stallions. It was a wise man who once said that "size is no more a criterion of strength than waste is of speed." It is through the stallions, placed in the various districts for the use of the farmer, that we must hope to accomplish the desired end. Through the good offices of the New York Jockey Club the State of New York enjoys an advantage in having had placed among the farmers the service of thoroughbred stallions free of charge, resulting in the production of many half bred mares which would prove most valuable for the purpose of breeding the class of horse required by the army.

For the army remount the thoroughbred stallion is undoubtedly the horse to use as a sire. This horse should

be of medium size and of powerful mould, one whose size should be gauged by the scales rather than by the eye line. This type of stallion, bred to the mares that are available, be they trotters, hackneys, Morgans, saddlers or half breeders, should give good results. For artillery purposes my selection of a stallion would be the standard bred trotter of powerful conformation, if possible, a big horse on short legs. This type of stallion will cross well on mares of various breeds and especially on the many half bred Percheron mares to be found in the possession of farmers nearly everywhere. In selecting the thoroughbred and standard bred trotting stallions I have been guided by the fact that racing has given to these breeds a power of endurance and gameness unattainable to others that have not been put to the same supreme test.

TRUE TEST OF MERIT. You judge a man not by what he promises to do, but by what he has done. That is the only true test. Chamberlain's Cough Remedy judged by this standard has no superior. People everywhere speak of it in the highest terms of praise. For sale by all dealers. Benson, Smith & Co., Ltd., agents for Hawaii—advertisement.

Advertisement for California Farm Lands, Charles A. Stanton & Co., Inc., San Francisco, California.

Advertisement for Hawaiian Trust Co., Ltd., 923 Fort St., Agents in the Hawaiian Islands for Liability Insurance.

NO YALE ARMY FOOTBALL SCHEDULED FOR 1913. For the first time since 1894 Yale's football team will not play the Army at West Point next fall, according to the schedule of games announced at New Haven on Jan. 16. Reasons given for the change are that the army game came too early in the season, necessitated a long trip, and was too severe a strain on the players in view of the championship contests with Princeton and Harvard.

GRAM. SCHOOLS READY FOR TRACK

The first step toward opening the track season in Honolulu has been made by the completion of the arrangements governing the Grammar School Athletic League track and field meet, which is to be held on Alexander Field on March 1, beginning at one o'clock in the afternoon. The entries this year will be divided into two classes, the first being made up of participants weighing above one hundred pounds, and the second for those under one hundred pounds. These two divisions will be known as class A and class B respectively, and a banner will be awarded to each winning class. The rules governing the entries are somewhat more rigid than in former years, it being required that there be five entries in each event, with three for a starter. First place will count five points, second, three points, and third one point. The weighing-in for all events will take place in the physical director's office at the Young Men's Christian Association on February 14, 15 and 17. It has been requested that all participants be on hand on one of these days. The schools composing the Grammar School Athletic League which will enter into the meet this year are Mills School, Iolani, Punahou, Central Grammar, Kailua, Kamehameha and St. Louis, and for the benefit of the coaches of the teams of these different schools, as well as those students who intend to enter the events, Secretary W. L. Johnson announces the following schedule of events, complete to date: Track Events. Class A—100 yard dash—trials: 880 yard run; 220 yard trials; 100 yards finals; 440 yard trials; 220 yard finals; 880 yard relay (4 on team). Class B—50 yard dash—trials: 220 yard trials; 50 yard finals; 100 yard trials; 220 yard finals; 100 yard finals; 400 yard military relay. Field Events. Class A—Shot put; broad jump; high jump; pole vault. Class B—Broad jump, high jump.

Fifty Ute Indians, enraged by the killing of one of their number by a Mexican sheep herder, have armed themselves and gone on the warpath in the Colorado mountains.

KAMEHAMEHA FIGURES TO ANNEX INTERSCHOLASTIC SOCCER TITLE

The scheduled soccer game between Kamehameha and High School did not come off yesterday afternoon, and as the result the championship of the interscholastic League is still undecided. McKinley was producing a school play last night, and as several of the soccer players appeared in the cast, they did not wish to run the risk of having their stage presence marred, and asked for a postponement, which the Kams granted. High School is in the position of a stumbling block between Kam and the pennant. The Kams are one point behind St. Louis, which has already completed its schedule, and a win over the Highs will mean the championship. A drawn game will mean a tie for first place, in which event St. Louis would take first honors on goals scored, having now a lead of seven goals over Kam. The postponed game will be played this afternoon, and unless the dope goes very far wrong, Kamehameha should win. The McKinley soccer team hasn't been up to the mark this season, and has been easy for Kam and St. Louis, although the latter school could get nothing better than a draw in one game.



KAMEHAMEHA SCHOOL SOCCER ELEVEN. Standing—Left to right: Hussey, Desha, Bush, Kaoni, Correa, Shipman, Makana. Kneeling—left to right: Opunui, Kauhine, Hipa and Kalaialii.

A physicians bill in Colorado prohibits anyone but the licensed practitioner from diagnosing or treating cases. Those shut out retaliated by introducing an amendment providing a jail sentence and fine for any physician who operates on healthy organs. In other words the physician must produce a defective appendix if he dares to operate for appendicitis.

Advertisement for Japanese Bazaar, Fort Street below Convent, featuring new arrivals like Pina Cloth and Silk and Cotton Embroidered Dress Patterns.

CLASSY CARD FOR CARIVAL RACES

Committee Announces List of Events and Purses for Meeting to Be Held at Kapiolani Park Feb. 21—Horses and Autos Will Be Looked After

Judging from the list of events, and the generous purses hung up, the next racing meet at Kapiolani Park should be a classy affair. Thirty-one hundred dollars in purses is offered as an incentive to horsemen, and this should bring out the best that the islands can produce in the way of runners and trotters. Nor are the autos overlooked on the program, two races being arranged for the Gasoline Row contingent.

Following is the program, which was made public yesterday afternoon by the committee which has charge of the meeting February 21:

- 1. Half-mile race; Hawaiian bred. Purse, \$300.
2. One-mile race; Hawaiian bred, trotting and pacing; best 3 out of 5. Purse, \$180.
3. Half-mile race; 14.3 ponies. Purse, \$100.
4. Three-eighths mile race; 2-year olds. Cup.
5. Five-eighths mile race; free-for-all. Purse, \$300.
6. Three-quarter mile race; Hawaiian bred. Purse, \$300.
7. One-mile race; Mid-Pacific Carnival Sweepstakes, trotting and pacing, free-for-all; best 3 out of 5; three to enter and two to start. Purse, \$1000.
8. One-mile race; free-for-all, five to enter; if less than five the delinquent entrance fees to be deducted from the purse; three or more to start. Purse, \$700.
9. One-mile race; 2:15 class; best 3 out of 5, trotting and pacing. Purse, \$350.
10. Three-quarter mile race; free-for-all. Purse, \$100.
11. Half-mile race; gentlemen's riding race. Cup.
12. Half-mile race; 14.3 Hawaiian bred. Purse, \$100.
Entrance fee 10 per cent of purse. Conditions: Three to enter, two to start in all races except the eighth. Entries to close February 17, 1913, at noon, at office of the Volcano Stables and Transportation Company. Note: With the exception of the Mid-Pacific Carnival Sweepstakes, the above purses are all subject to the gate receipts.
ROBERT HORNER, Chairman, Race Committee; J. E. O'CONNOR, Secretary.

Auto Races. Two hundred and seventy-five dollars will be given in purses to the winners of the two automobile races, which will start at 4 p. m. sharp, according to the following program: First race, ten miles, small cars. Purse, \$100. Second race, twenty miles, free-for-all. Purse, \$175.

LEGISLATORS KNOCK POLO

WASHINGTON. — An amendment to the army appropriation bill to prohibit the transportation at government expense of army horses to participate in polo games and races, offered by Representative Burke of South Dakota recently, precipitated a heated debate and resulted in an adjournment of the house on the point of no quorum. Representatives Burke and Madden of Illinois and others advocated the adoption of the amendment. Representative Hay of Virginia, chairman of the committee; Republican Leader Mann and Representative Kahn of California opposed it, insisting that army men were permitted to enter their horses in games and races because the practice tended to aid the movement for the improvement in mounts. An amendment to the bill to restore the army canteen, offered by Representative Bartholdt of Missouri, was ruled out on a point of order.

Advertisement for Crossroads Bookshop, Limited, Alexander Young Building, 'Everything in Books'.

# HOPP'S ANNUAL FEBRUARY CLEARANCE SALE

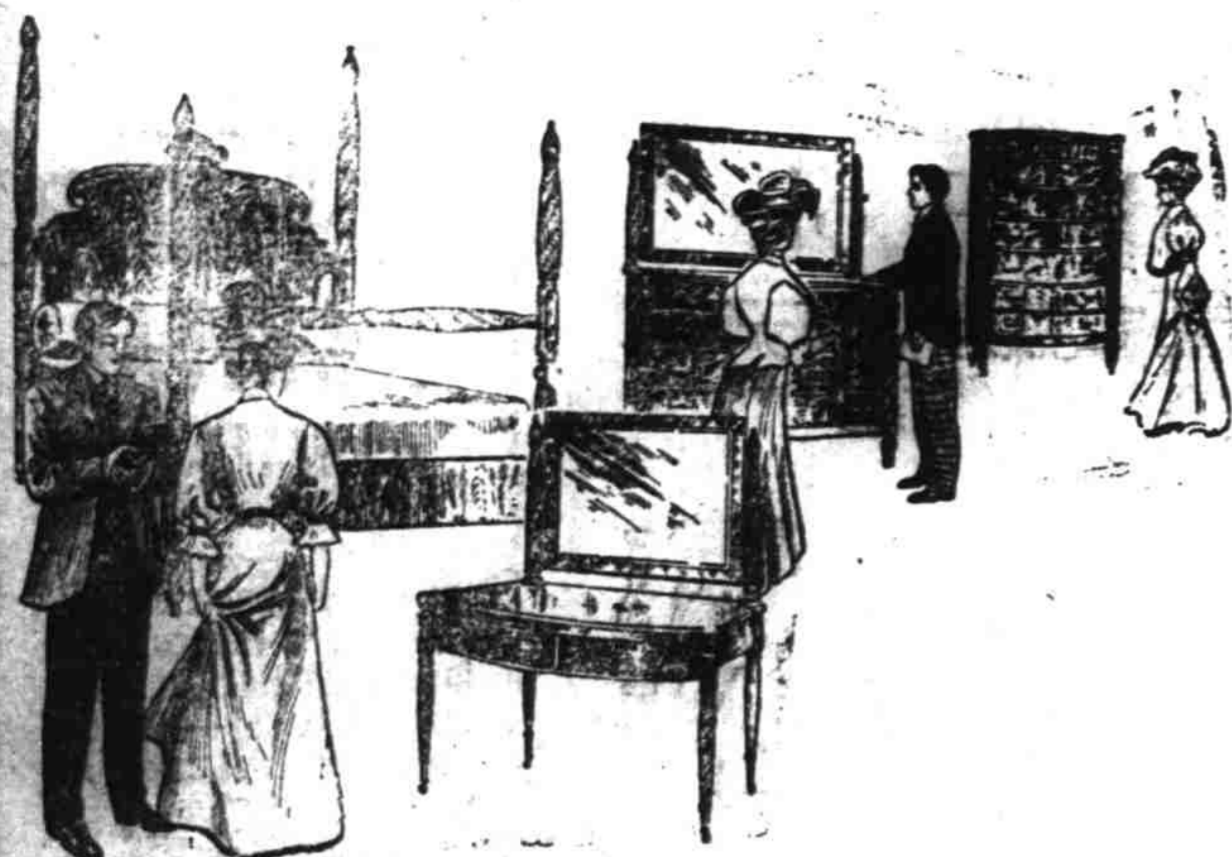
## THE BIGGEST AND BEST WE HAVE EVER HELD

## THE GREATEST SALE YET

COMMENCING MONDAY, THE 3D, AND CONTINUING UNTIL SATURDAY, THE 15TH

NOT ONLY is it a clearance sale of odd pieces, samples, and overstocked patterns, but also includes many pieces of new goods, goods that were purchased for the Xmas trade, but were late in arriving and must be cleared out to make room for our heavy purchases of spring goods. There is nothing in this great stock of High Grade Furniture and Furnishings that is held in reserve—every article included in this sale. The discounts range from 10% to 40%. The general average saving will be 25%. We assure you that you will never be able to buy furniture any cheaper.

Scan this list of bargains. It will give you some idea of the great reductions. Then come to the store to inspect the goods, and then the values will be more apparent.



### The Largest Line of Arm Chairs and Rockers And the Lowest Prices Ever Offered

Former Price	Sale Price
\$ 9.00 MAHOGANY ROCKER, RATTAN UPHOLSTERED	\$ 6.75
\$12.00 MAHOGANY ROCKER, RATTAN UPHOLSTERED	\$ 9.00
\$20.00 MAHOGANY SETTEE, RATTAN UPHOLSTERED	\$14.00
\$12.00 MAHOGANY CHAIR, RATTAN UPHOLSTERED	\$ 8.50
\$15.00 MAHOGANY ROCKER, CANE SEAT AND BACK	\$11.00
\$18.00 MAHOGANY ROCKER, CANE SEAT AND BACK	\$13.00
\$10.00 MAHOGANY ROCKER, WOOD SEAT	\$ 7.50
\$18.00 MAHOGANY ROCKER, WOOD SEAT	\$13.50
\$88.00 MAHOGANY SETTEE, WOOD SEAT	\$62.00
\$22.00 MAHOGANY CHAIR, RUSH SEAT	\$16.00
\$15.00 MAHOGANY ROCKER, RUSH SEAT	\$11.00
\$50.00 MAHOGANY SETTEE, LEATHER UPHOLSTERED	\$38.00
\$88.00 MAHOGANY ROCKER, LINEN VELOUR UPHOLSTERED	\$68.00
\$78.00 MAHOGANY ROCKER, HAIR CLOTH UPHOLSTERED	\$58.75
\$45.00 MAHOGANY SETTEE, WOOD SEAT	\$33.00
\$24.00 MAHOGANY CHAIR, WOOD SEAT	\$19.00
\$ 6.75 FUMED OAK ROCKER, LEATHER UPHOLSTERED	\$ 5.00
\$12.00 FUMED OAK CHAIR, LEATHER UPHOLSTERED	\$ 9.00
\$11.50 FUMED OAK ROCKER, LEATHER UPHOLSTERED	\$ 9.00
\$14.00 FUMED OAK ROCKER, LEATHER UPHOLSTERED	\$10.75
\$16.00 FUMED OAK ROCKER, LEATHER UPHOLSTERED	\$12.75
\$18.00 FUMED OAK CHAIR, LEATHER UPHOLSTERED	\$13.00
\$20.00 FUMED OAK ROCKER, LEATHER UPHOLSTERED	\$15.00
\$20.00 FUMED OAK ROCKER, LEATHER UPHOLSTERED	\$15.00
\$18.00 GOLDEN OAK MORRIS CHAIR	\$13.50
\$25.00 FUMED OAK MORRIS CHAIR	\$19.00
\$30.00 FUMED OAK MORRIS CHAIR	\$24.00
\$40.00 FUMED OAK MORRIS CHAIR	\$30.00
\$18.00 MAHOGANY MORRIS CHAIR	\$14.00
\$31.00 MAHOGANY MORRIS CHAIR	\$23.00
\$38.00 MAHOGANY MORRIS CHAIR	\$28.00

Former Price	Sale Price	Former Price	Sale Price
\$ 8.75 Reed Rockers	\$ 4.50	\$30.00 Reed Chair	\$20.00
\$ 8.00 Reed Rockers	\$ 4.00	\$11.00 Willow Chair	\$ 8.25
\$ 7.50 Reed Chair	\$ 5.00	\$14.00 Willow Chair	\$10.50
\$12.00 Reed Rocker	\$ 8.00	\$15.00 Willow Rocker	\$11.25
\$15.00 Reed Rocker	\$10.00	\$18.00 Willow Chair	\$13.50
\$18.00 Reed Chair	\$14.00	\$25.00 Willow Settee	\$18.75
\$18.00 Reed Chair	\$10.00		

### Exceptional Values In Dining-Room Furniture

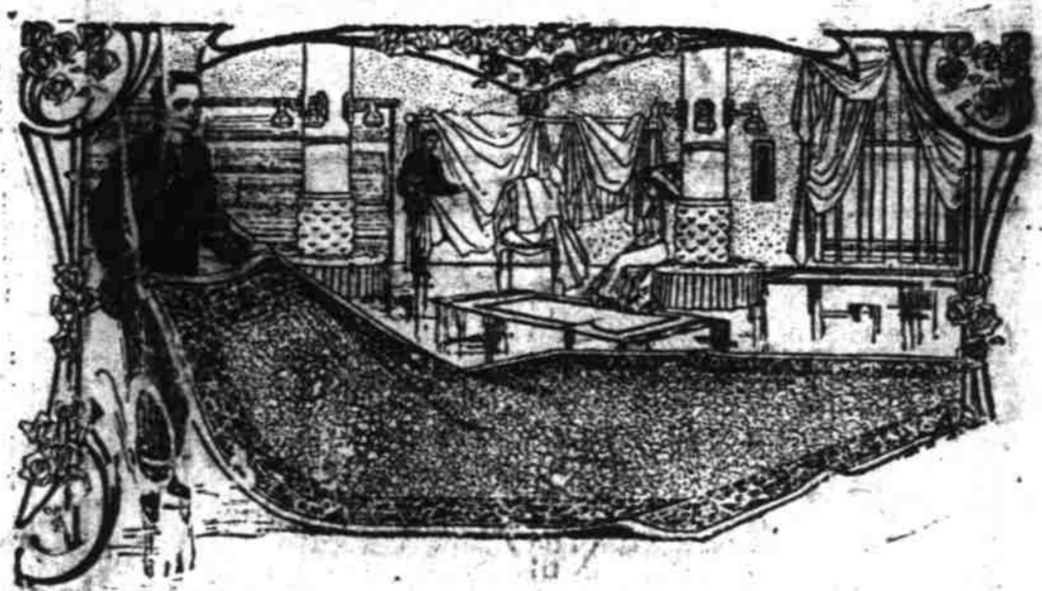
BUFFETS		CHINA CLOSETS	
Former Price	Sale Price	Former Price	Sale Price
\$30.00 Fumed Oak	\$23.00	\$ 24.00 Fumed Oak	\$19.00
\$38.00 Fumed Oak	\$29.00	\$ 28.00 Fumed Oak	\$21.00
\$42.00 Fumed Oak	\$33.00	\$ 33.00 Fumed Oak	\$25.00
\$58.00 Fumed Oak	\$46.00	\$100.00 Mahogany	\$80.00
\$65.00 Fumed Oak	\$51.00	\$125.00 Mahogany	\$75.00
\$80.00 Early English	\$55.00	\$ 43.00 Golden Oak	\$32.00
\$75.00 Mahogany	\$60.00	\$ 54.00 Golden Oak	\$40.00
\$135.00 Mahogany	\$108.00	\$ 80.00 Golden Oak	\$45.00
\$ 28.00 Golden Oak	\$ 21.00	\$ 85.00 Golden Oak	\$60.00
\$ 44.00 Golden Oak	\$ 33.00	\$ 87.00 Golden Oak	\$ 65.00
\$135.00 Golden Oak	\$100.00		

### Library, Parlor and Bedroom Tables

Former Price	Sale Price	Former Price	Sale Price
\$12.00 Fumed Oak Library Table	\$ 8.50	\$10.00 Fumed Oak Parlor Table	\$ 6.00
\$18.00 Fumed Oak Library Table	\$12.00	\$19.00 Fumed Oak Parlor Table	\$15.00
\$18.00 Fumed Oak Library Table	\$16.00	\$ 4.75 Mahogany Parlor Table	\$ 3.75
\$21.00 Fumed Oak Library Table	\$16.00	\$12.00 Mahogany Parlor Table	\$ 9.50
\$30.00 Fumed Oak Library Table	\$23.00	\$16.50 Mahogany Parlor Table	\$13.00
\$40.00 Fumed Oak Library Table	\$32.00	\$23.00 Mahogany Parlor Table	\$18.00
\$46.00 Fumed Oak Library Table	\$36.00	\$ 4.00 Golden Oak Parlor Table	\$ 3.00
\$ 3.75 Fumed Oak Parlor Table	\$ 2.85	\$ 8.00 Golden Oak Parlor Table	\$ 6.00
\$ 6.00 Fumed Oak Parlor Table	\$ 4.75	\$11.00 Golden Oak Parlor Table	\$ 7.00

### Our Rug and Drapery Department

Offers a Large Assortment of Styles and Sizes at Greatly Reduced Prices



CREX RUGS, PLAIN			TAPESTRY BRUSSELS RUGS		
Former Price	Size	Sale Price	Former Price	Size	Sale Price
\$ .50	18x36	\$ .35	\$ 8.00	6x9	\$ 5.75
\$ .75	21x48	\$ .55	\$15.00	9x12	\$11.00
\$ 1.25	30x60	\$ .85	\$10.00	6x9	\$ 7.00
\$ 1.50	36x72	\$ 1.10	\$15.00	8.3x10.6	\$11.00
\$ 3.00	54x90	\$ 2.40	\$18.00	9x12	\$13.00
\$ 4.75	6x9	\$ 3.75			
\$ 7.50	8x10	\$ 6.00			
\$10.00	9x12	\$ 7.50			

EXTRA SPECIAL 100 27-in. Axminster Rugs, 100 Regular Price \$2.75 CHOICE \$1.95.

WILTON RUGS			BODY BRUSSELS RUGS		
Former Price	Size	Sale Price	Former Price	Size	Sale Price
\$ 5.00	27x34	\$ 4.00	\$15.00	4.6x7.6	\$11.00
\$10.00	36x72	\$ 8.00	\$25.00	6x9	\$19.00
\$18.00	4.6x7.6	\$13.50	\$37.00	9x12	\$29.00
\$30.00	6x9	\$24.00			
\$50.00	9x12	\$40.00			

HALL AND STAIR CARPET		
Grade	Width	Price
\$1.00	Grade 3-4	\$ .75 A YD.
\$1.75	Grade 4-4	\$1.35 A YD.
\$1.25	Grade 3-4	\$ .95 A YD.
\$1.50	Grade 3-4	\$1.15 A YD.
\$2.25	Grade 3-4	\$1.75 A YD.



### Rare Values In Bedroom Furniture

BRASS BEDS		DRESSERS	
Former Price	Sale Price	Former Price	Sale Price
\$28.00 Satin Brass	\$21.00	\$10.00 Golden Oak	\$ 7.50
\$40.00 Satin Brass	\$30.00	\$18.00 Golden Oak	\$14.00
\$45.00 Satin Brass	\$38.00	\$23.00 Golden Oak	\$18.00
\$50.00 Satin Brass	\$38.00	\$25.00 Golden Oak	\$22.00
\$55.00 Satin Brass	\$44.00	\$38.00 Golden Oak	\$30.00
\$65.00 Satin Brass	\$40.00	\$42.00 Golden Oak	\$33.00
\$70.00 Satin Brass	\$55.00	\$24.00 Golden Oak	\$19.00
		\$24.00 White Maple	\$19.00
		\$28.00 Birdseye Maple	\$22.00
		\$45.00 Birdseye Maple	\$36.00
		\$40.00 Mahogany	\$32.00
		\$48.00 Mahogany	\$38.00
		\$65.00 Mahogany	\$52.00
		\$90.00 Mahogany	\$68.00
		\$125.00 Mahogany	\$100.00
		\$28.00 Circassian Walnut	\$22.00
		\$52.00 Circassian Walnut	\$41.50
		\$29.00 Fumed Oak	\$23.00
		\$35.00 Fumed Oak	\$28.00
		\$24.00 White Enamel	\$19.00
		\$32.00 White Enamel	\$25.00
		\$45.00 White Enamel	\$36.00
		\$56.00 French Grey	\$44.00

### NOVELTY FURNITURE

of the HIGHEST QUALITY, at extreme discounts. These are brand new goods bought for the Christmas trade, but did not arrive in time, and rather than carry them over until next season we make these unusual prices.

Former Price	Sale Price	Former Price	Sale Price
\$ 7.00 Fibre Sewing Stand	\$ 4.50	\$14.00 Fumed Oak Flower Stand	\$ 8.50
\$ 5.00 Fibre Muffin Stand	\$ 3.50	\$ 8.00 Fiber Book Stand	\$ 5.00
\$10.00 Fumed Oak Magazine Stand	\$ 6.00	\$18.00 Fiber Tea Cart	\$12.00
\$ 5.00 Fumed Oak Umbrella Stand	\$ 3.50	\$16.00 Golden Oak Sewing Cabinet	\$11.00
\$ 4.50 Fumed Oak Waste Basket	\$ 3.00	\$25.00 Mahogany Sewing Cabinet	\$17.00
\$ 6.00 Fumed Oak Waste Basket	\$ 4.00	\$55.00 Mahogany Sewing Cabinet	\$40.00
\$15.00 Fumed Oak Smoking Stand	\$10.50	\$15.00 Mahogany Muffin Stand	\$10.00
\$16.50 Fumed Oak Smoking Stand	\$12.00	\$11.00 Mahogany Tilted Table	\$ 8.00
\$20.00 Fumed Oak Cellairette	\$15.00	\$20.00 Mahogany Tilted Table	\$14.00
\$20.00 Fumed Oak Humidore	\$14.00	\$30.00 Mahogany Shaving Stand	\$21.00
\$17.00 Fumed Oak Bookwagon	\$12.00	\$22.00 Fumed Oak Shaving Stand	\$15.00

### ELECTRIC PORTABLES

IN WOOD, REED AND POTTERY AT CLEARANCE PRICES.

Former Price	Sale Price	Former Price	Sale Price
\$ 6.50 Fumed Oak Portable	\$ 4.25	\$30.00 Mahogany Portable	\$22.50
\$12.00 Fumed Oak Portable	\$ 9.00	\$45.00 Mahogany Portable	\$32.00
\$14.00 Mahogany Portable	\$10.50	\$65.00 Mahogany Portable	\$48.00
\$23.00 Fumed Oak Portable	\$17.50	\$40.00 Fumed Oak Piano Lamp	\$29.00
		\$45.00 Mahogany Piano Lamp	\$33.00

Fulper Art Pottery - 25 p.c. discount  
Framed Pictures 33 1-3 p.c. discount

# PROPOSES SINGLE TAX SYSTEM FOR NEW CITY GOVERNMENT UNDER COMMISSION OR SHORT-BALLOT

Interesting Suggestions Made by W. A. Bryan in Talk Before Massmeeting

The following paper by Prof. W. A. Bryan was read before a gathering of citizens at a mass meeting in the public library on Tuesday evening, January 14. The mass meeting was called by the Civic Federation to discuss the proposed short-ballot charter for Honolulu. Prof. Bryan's paper is a comment on his plan of organization already outlined as well as containing some further suggestions. Among these are the "single tax."

If the city and county of Honolulu is to have a new charter at all, it is a very important matter that all of our citizens should have a hand in its making and an interest in its ultimate success as an instrument for local self-government. No such time and thought cannot be bestowed on the consideration of the features which such a document should include as well as exclude. The people generally who will ultimately be governed by it should know in advance what the nature of the new charter will be and should be in a position to inform the recently formed charter committee for its guidance. Some main features they will expect to find in the charter when it comes back to them for ratification should a charter bill be passed by our legislature.

It is with a view to securing an open, free expression of opinion on this important subject that the Civic Federation, in accordance with its well-known policy, has held this open meeting which is in every sense a town meeting of citizens for the consideration of this matter.

As a member of the Civic Federation's charter committee and as a member of the general committee called together by Governor Frear, I have been asked by a number of members of the Federation committee to review the outline charter recently ordered printed by the organization for circulation as a basis for discussion. To the brief sketch there outlined, I am asked to add notes and such other pertinent matter as have led me to favor the particular form of charter there in sketch for this community over any other of the many other forms that have been adopted elsewhere. It is hoped that the discussion which may follow will be helpful in formulating a plan and serve as a guide to Mr. McKay, Mr. McChesney and myself to what particular features our constituency expects us to stand for in any part we may have in formulating the new draft which will go before the legislature.

call initiated by a petition stating the reason for the demand and signed by at least twenty-five per cent of the citizens voting at the last preceding election.

The council should be given all the powers now enjoyed by the board of supervisors and the charter should be drawn so as to make it possible to take over additional powers from time to time, or in the future, may be induced to transfer them to the city to the end that Honolulu may become, what it should be, a normal city with jurisdiction over its sewer system, school and public buildings and equipment, its water works, jails, streets and all similar matters as well as provided with reasonable taxing and bond voting powers.

Five councilmen commissioners with the mayor one of their members has met with favor in the great majority of mainland cities and towns Election for four years is favored a two years in office is not long enough time for an efficient official to demonstrate his full worth to the city nor to initiate and consummate any important public work he may have been elected to perform. If he should prove inefficient or incompetent or unworthy of the confidence of the majority of the voters he would be subject to the recall before much harm could be accomplished. By returning the commissioner selected by his associates as mayor to stand for reelection at the end of two years—the result of majority rule in the council—the policy of the body as a whole is as completely under the control of the voters, as though an entire new council was elected every two years as at present. But by the rotation principle public business would not be subjected to the disorganization and turmoil through which our municipal affairs are now passing owing to the exit of the "outs" and entrance of the "ins" in every city office.

Right of Recall Essential.

The right of recall in popular government, and especially where great power is given to officials, is almost as important to the proper working out of government by the will of the people as the right to elect in the first place. That such a recall should be initiated by a considerable body of the electorate is also important. In the charter under consideration the number is fixed at twenty-five per cent as being high enough to indicate widespread dissatisfaction, and yet low enough to be effective in the hands of interested citizens—rather than as an instrument of persecution in the hands of a defeated candidate of a designing clique. Except an open petition kept on file at the office of the city registrar, I would favor each petition being limited to say two hundred names secured by any one voter. The person filing such a list should be required to make affidavit that the names were bona fide signatures secured without compensation or coercion on the part of the voters or the calculator of the petition. This would prevent professional trouble makers from trafficking this feature and insure its use only as an emergency measure. To be specific it would mean in our local election that there were at least a hundred active citizens interested enough in the removal of a commissioner to take steps to bring it about.

Part of that education exists in studying, formulating, accepting and directing the form of government under which one must live. Honolulu is to have a new charter, I believe it will, it must be one that will be acceptable to the majority—and that means to the Hawaiian people, since this is their native country and as a group they outnumber all other groups of our highly-complex citizenship. This is Hawaii and in matters of local government the native people still have the final say. The reason of their numbers, they control the electorate. Upon them as a group rests the responsibility for government not only in Honolulu but Hawaii, though the burden of government may fall elsewhere.

Any improvement in our city charter will be traceable to them a for failures and shortcomings—their will be held accountable both at home and on the mainland. For these reasons favor the return of any charter that may be adopted to the electorate for final ratification, preferring as I do to rely on the approval of a majority of the voters in important matters to their elected representatives, however competent they may be. The charter we are to consider was, therefore, drawn with a view to its being virtually adopted by the people. If the plan had sufficient merit to come to it over any other that might be offered.

Press Has Great Power

To my mind the short ballot form of government confers peculiar and remarkable powers upon the daily press. An unscrupulous newspaper with its powers for creating and speaking news if supplied with a few effective runners could set an effective recall in operation through the press. The press should be more particular in its effect than any thing a boss ridden party could accomplish if not checked in some such way as I have suggested.

As to the property all seem to agree that the city should be given possession of the roads, streets and parks of the city as well as the school property, waterworks, markets, sewer systems, garbage disposal, public buildings and equipment and all other public property not territorial in use or nature. Whether this can be done by the legislature in every case, without the power to do so being granted by Congress, is somewhat doubtful. However, the charter should be so drawn that the city can take over city property at any future time.

As to taxing and bonding powers, the city should have the customary power to levy taxes on real and personal property, to collect specific taxes on the various vehicles and on animals, etc.; to levy special taxes for various improvements (as sidewalks, for opening and grading streets, extending the sewer and water systems and so on) and especially to provide for the frontage tax for street improvements in which the depth of the abutting lot should be defined as not exceeding two hundred and fifty feet. All back lots and undivided property within a definite radius from the capital building, which limits should be gradually extended, should be subject to a frontage tax based on the nearest street frontage. Such a law would automatically have the desired effect of opening up streets, providing for sewers and bringing about the gradual development of the city and would prevent such property longer being withheld from its legitimate uses for residence and business purposes.

Single Tax is Suggested

The general rate of taxation, within limits, should be fixed from year to year by the commissioners. But in addition to the foregoing taxing powers, the commissioners should be given power, on demand by a majority of the voters of the city and county, to gradually abolish the present unequal and unsatisfactory form of taxation and substitute in its stead a single tax on land values.

This system of taxation suggested by James Mill, the economist, after a study of economic conditions in India almost a century ago, has received attention around the world. Such thinkers and leaders as David Ricardo, Thomas Carlyle, John Stewart Mill and latter the American Henry George have urged the fixing of taxes on the value of the land and removing it from the improvements. At last I am happy to say the single tax is winning some and considered for adoption in many other commission governed cities as being the logical and just way in which to raise the revenue for the support of the city. I regard the ultimate adoption of the system here as inevitable if commission government is established and would therefore prepare for it in the charter.

The change from one system to the other should be made so that the assessment, levy and collection of taxes on real and personal property for all corporate or municipal purposes of the city and county and to provide for the debts and expenses of the city should be uniform with respect to persons and property on the land. It should be provided that such change in the method of taxation should not become effective for two years after its approval by the voters and that for two years thereafter there shall be exempt from such taxation 25 per cent, for the third year 50 per cent and thereafter for the fourth year 75 per cent and thereafter 100 per cent of the value of all buildings, structures and improvements and other fixtures of whatsoever kind upon the land within the city, but, of course, nothing in the charter should affect property in the city exempt from taxation by the laws of the territory or nation.

# CASTORIA

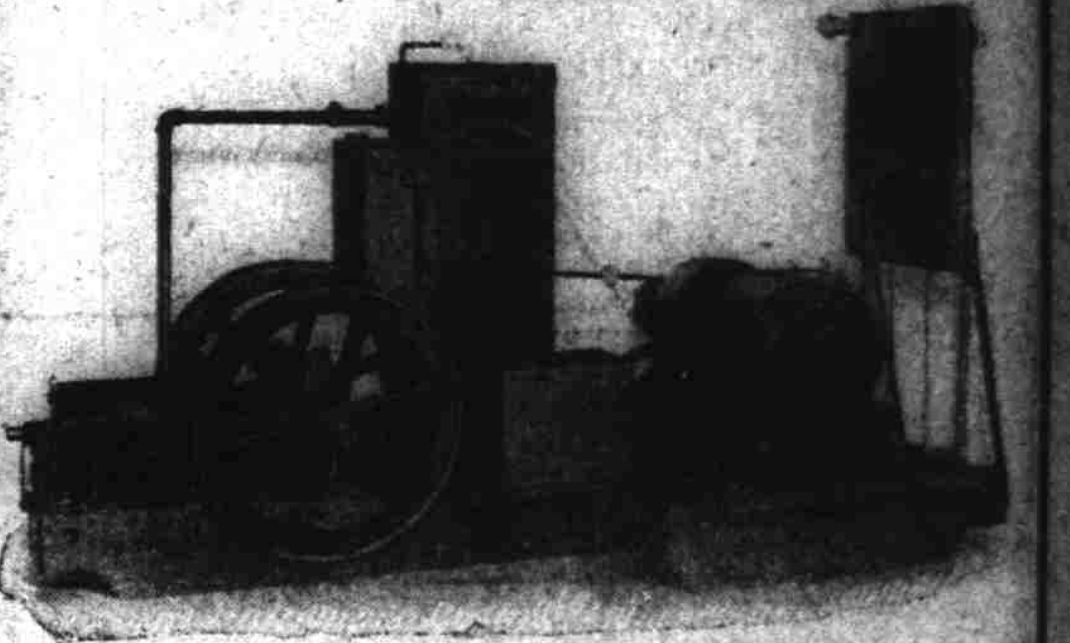
for Infants and Children.  
**What is Castoria?**  
**CASTORIA** is a harmless substitute for Castor Oil, Paregoric, Drops and Soothing Syrups. It is pleasant. It contains neither Opium, Morphine nor other Narcotic substance (Narcotics stupefy). Its age is its guarantee. It destroys Worms and allays Feverishness. It cures Diarrhea and Wind Colic. It relieves Teething Troubles, cures Constipation and Flatulency. It assimilates the Food, regulates the Stomach and Bowels, giving healthy and natural sleep. **The Children's Panacea—The Mother's Friend.**

The signature of *Dr. J. C. Hatcher* is on every wrapper of genuine **Castoria**.  
**Physicians Recommend Castoria.**  
 "My patients invariably praise the action of your Castoria."  
 W. W. TAYLOR, M. D., Buffalo, N. Y.  
 "I use your Castoria and advise it to all families where there are children."  
 J. W. DUNN, M. D., Chicago, Ill.  
 "Your Castoria is the best remedy in the world for children and the only one I use and recommend."  
 ASHLEY V. SWENLAND, M. D., Omaha, Neb.  
 "Your Castoria is certainly the greatest remedy for children I know of. I know no other proprietary preparation which is its equal."  
 E. S. SCHWARTZ, M. D., Kansas City, Mo.  
 "I have used your Castoria as a purgative in the case of children for years past with most happy effect, and fully endorse it as a safe remedy."  
 H. D. BROWN, M. D., Philadelphia, Pa.

**Children Cry for Fletcher's Castoria.**  
 In Use For Over 30 Years.

# NEILL'S WORKSHOP

125 Merchant Street



**A Complete Self-Contained Electric Lighting Portable Outfit**

For Private House or Contractor's Work Outside Lighting. Capable of supplying twenty 16-candlepower lights. INSPECTION INVITED.

## The "Peer" of All League Balls

# Goldsmith Official League Ball

Is made in strict accordance with the requirements and specifications of The National and American Leagues and is official for use in any game played under the National Agreement Rules.

**THE FIRST AND ONLY EIGHTEEN INNING GUARANTEED BALL.**  
 Adopted by the Oahu League.  
 Full line of Goldsmith Athletic Goods.

# H. HACKFELD & CO., Ltd.

Agents.

## War Declared on Rats, Mice and Roaches

It has been scientifically demonstrated that rats are directly responsible for the spread of Bubonic Plague and other dreadful diseases, and it is the imperative duty of everyone to exterminate these pests by using **Stearns' Electric Rat and Roach Paste**.

Used successfully during the past 35 years throughout the entire civilized world. It is ready for use, better than traps, and cannot blow into food like exterminators in powder form.

Government Departments and Boards of Public Health repeat their orders for thousands of boxes. Money back if it fails. Be sure to get the genuine.

2oz. Box 25c. 16oz. Box \$1.00.  
 Sold by druggists everywhere.  
**STEARNS' ELECTRIC PASTE CO.**



**You'll Feel Delightfully Free In B. V. D.**

**THESE** Cost Cut Underhirts, Knee Length Drawers and Union Suits are *loose fitting*, so that you're never skin-chafed or muscle-bound. You perspire *fast* and feel *coolest* in B. V. D.

This Red Woven Label

MADE FOR THE **BYD** SPECIAL TRADE

B. V. D. Cost Cut Under-shirts and Knee Length Drawers, 56c. 75c. 21.00 and 31.00 a garment.

(Trade Mark Reg. U.S. Pat. Off. and Foreign Countries)  
 is sewed on every B. V. D. Undergarment. Take no undergarment without this label.

**The B. V. D. Company, New York.**



**For Sewing and Reading** The Rayo is recognized as the best lamp made. It gives a clear, steady light, soft and mellow; the ideal lamp, according to best authorities, for all work requiring close attention of the eyes (far superior to gas and electricity).

**The Rayo Lamp**

Lighted without removing chimney or shade. Easy to clean and rewick. Inexpensive. Economical. Made in various styles, and for all purposes.

At Dealers Everywhere

**STANDARD OIL COMPANY**  
 (California) San Francisco

# KRYPTOK LENSES



**Why Look Older Than You Are?**

The gentleman to the right of the reader (sketched from life) is wearing old style or panted double-vision lenses. The lines of the reading waters are noticeably prominent and he has difficulty in adjusting his eyes to the lenses. The cement used to join the two lenses has become clouded and has made his glasses misty.

The two figures to the left (sketched from life) are wearing Kryptok double-vision lenses. There are no seams on these glasses, because the reading lenses are fused invisibly within the distance lenses. These latter two persons are at ease, look dignified and comfortable.

**Alfred D. Fairweather**  
 Manufacturing Optician  
 FORT STREET, HARRISON BLOCK

**FIVE MILLION MEN Wear Shirley President Suspenders**

Try them yourself and you will realize why. They are supremely comfortable, they adapt themselves instantly to every motion, they are cool, light, strong, durable and every pair is *absolutely guaranteed to give satisfaction.*

Buy a pair to-day and test these qualities for yourself. Make sure that the words "SHIRLEY PRESIDENT" are stamped on the buckles and that the guarantee ticket is affixed to the back. These protect you fully. Made and guaranteed by

**The C. A. Edgerton Mfg. Co.**  
 Shirley, Mass., U. S. A.

# Society



Miss Bernice Halstead, whose picture appears in today's paper, is the eldest daughter of Mr. and Mrs. Frank Halstead. Miss Halstead is popular with the members of the younger set. One of the most successful of the week's entertainments was the dance at which she was hostess last evening.

**SOCIETY IN HONOLULU** seems to be an every-other-week matter. If there are a number of entertainments one week, the following week is pretty sure to be one of rest. The society folk motor to their out-of-town homes and remain in semi-seclusion. In almost every other society center in the United States folks are kept so busy every season prior to Lent that the world seems to whirl from morning till night. The tropical climate of Honolulu may be too suggestive of rest to permit such gay life or, perhaps, the society women are too much interested in philanthropic work to devote every day to social functions. Another phase of Honolulu life which makes entertaining easier is the lack of formality that reigns at the majority of the functions. With few exceptions the people move in sets and there is a spirit of congeniality that is noticeable to everyone. In many instances the society folk have known each other since childhood and have watched the growth of the home town together.

**Mr. and Mrs. A. J. Campbell Entertain.**  
One of the most elaborate dinner parties of the week was that at which Mr. and Mrs. A. J. Campbell entertained on Thursday evening in company with Mr. and Mrs. Wilhoit at Stockton, Cal., who are visiting in Honolulu. Mrs. Wilhoit and Mrs. Campbell were arduous friends, having attended Mills College together. The color scheme chosen by Mrs. Campbell combined the colors of Mills College and yellow and white. The table was decorated with the same color scheme. The table was draped with white, and the chairs were decorated with yellow and white. The table was decorated with the same color scheme. The table was draped with white, and the chairs were decorated with yellow and white. The table was decorated with the same color scheme. The table was draped with white, and the chairs were decorated with yellow and white.

- CALLING DAYS FOR HONOLULU**
- Mondays**—Punahou, Makiki.
- Tuesdays**—Waikiki, Kapiolani Park, Kaimuki, Palolo. First Tuesday, Fort Ruger.
- Wednesdays**—Nuuanu, Paunoi, Pacific Heights. First and third Wednesdays, above Nuuanu bridge; second and fourth Wednesdays, below bridge; fourth Wednesday, Pacific Heights; first and third Wednesdays, Alewa Heights.
- Thursdays**—The Plains.
- Fridays**—Hotels and town.
- Fourth Friday**, Fort Shafter; first Friday.
- Manoa, College Hills**, First and third Friday.
- Saturdays**—Kalihi. Third and fourth Saturdays, Kanehameha Schools.
- Society Editor**—Telephone 2799.

**Mrs. A. G. M. Robertson Entertains**  
The week's largest affair was the tea at which Mrs. A. G. M. Robertson entertained on Monday afternoon in compliment to Mrs. Robert Hair and her daughter, Mrs. Hillend, who are visiting in Honolulu. For her decorations Mrs. Robertson chose pink-shaded hibiscus flowers and baskets and vases of the pretty blossoms were arranged throughout the house. During the afternoon Mrs. Charles Hall, Miss Mary Marshall and Miss Nellie Marshall and the hostess rendered a very pleasing musical program. Mr. Carlos Caceres also played several piano selections.

**Mrs. Robert Shingle, Mrs. Robert Hair and Mrs. Hillend** received with the hostess, Mrs. Charles Childing, worth served punch. Mrs. Arthur Wall poured tea and Mrs. Carlos Long presided over the coffee table. Miss Ruth Johnson, Miss Sybil Robertson and Miss Alexandrina Strauch, three of Mrs. Robertson's younger friends, assisted in serving refreshments. Some among those who called during the afternoon to meet Mrs. Hair and Mrs. Hillend were Mrs. W. F. Frear, Mrs. S. B. Dole, Mrs. James T. Wayson, Mrs. W. C. Hobdy, Mrs. E. I. Shepherd, Mrs. Thomas Wall, Mrs. James D. Dougherty, Mrs. E. A. Mott-Smith, Mrs. G. P. Wilder, Mrs. George C. Beckley, Mrs. St. C. Sayre, Mrs. Wallace R. Farrington, Miss Mitchell, Mrs. G. P. Peterson of Seattle, Miss Dietz, Mrs. George Curry, Mrs. Isidor Rubenstein, Miss Werthmueller, Mrs. George W. Smith, Mrs. A. N. Campbell, Mrs. Arthur Wilder, Mrs. Lackland, Mrs. J. M. Dowsett, Mrs. A. Constable, Mrs. Percy Cleghorn, Mrs. Antonio Perry, Miss Bernice Cooke, Mrs. Frank Cleghorn, Mrs. William Cambell, Miss Marjorie Freeth, Mrs. Arthur Brown, Miss Stone, Mrs. Robert R. McEldowney, Miss Lucy Dimond, Mrs. Andrew Brown, Miss Phillips, Mrs. Hough, Mrs. W. N. Jamieson, Mrs. George Smith, Mrs. A. T. Wirtz, Mrs. John Walker, Mrs. L. Whitehouse, Mrs. S. N. Castle, Mrs. Hurd, Miss Lena Bliss, Miss Jennie Biles, Mrs. S. G. Wilder, Mrs. A. M. Brown, Mrs. W. D. McCallum, Mrs. Vera McCallum, Mrs. Malcolm McIntyre, Miss Ethel Whiting, Mrs. Charles Weicht, Mrs. Hodgins, Mrs. Guild, Mrs. Withington, Mrs. Hoffman, Mrs. E. E. Steers, Mrs. Charles Brown, Mrs. E. A. Douthitt, Mrs. Herbert Dowsett, Mrs. A. P. Taylor, Mrs. Chester Hunn, Mrs. L. Tenney Peck, Miss Josephine Soper, Miss Blanche Soper and others.

**Mrs. Ross Kingsbury Entertains.**  
On Thursday afternoon Mrs. Ross Kingsbury entertained an informal card party for Mrs. Fred Kingsbury and Miss Roma Love who are visiting here. The first prize was taken by Mrs. Lemuel Stevens the second by Mrs. Kirby Smith and the consolation was given to Mrs. Harold Pratt. Among those present were Mrs. Fred Kingsbury, Miss Roma Love, Mrs. W. P. Wood, Mrs. W. C. Neville, Mrs. E. J. Huberlake, Mrs. John Stuart Johnson, Walter C. Cowley, Mrs. Gerald Johnson, Miss Edith Cowley, Mrs. David Pratt, Mrs. Kirby Smith, Mrs. M. L. Whitney, Mrs. Harry Wilder, Mrs. F. B. McStocker, Miss Juli McStocker and the hostess.

**Miss Fanny Hoogs Entertains.**  
Miss Gertrude Jones, who accompanied Mrs. F. J. Patterson to Honolulu, is the guest of honor at a Five Hundred party this afternoon at which Miss Fanny Hoogs is hostess at her home at Makiki street. The color scheme for the decorations is pink, developed with lacy pink begonias. The hand-painted score cards are also decorated with pink begonias. The invited guests are Miss Gertrude Jones, Miss Marjorie Gilman, Miss Laura Atherton, Miss Violet Atherton, Miss Juliet Atherton, Miss Marie Howatt, Miss Ruth McClesney, Miss Martha McClesney, Miss Carrie McLane, Miss Callie Lucas, Mrs. Frank Hoogs, Miss Belle McCarrison, Miss Helen Gravin, Miss Ruth Anderson, Miss Ruth Soper, Miss Myrtle Schuman, Miss Margaret Restarick, Miss Marie Lann, Miss Elora Sturgeon, Miss Alice Cooke, Mrs. Jack Young, Miss Sarah Lucas, Miss May Marshall, Miss Nellie Marshall, Miss Rose Herbert, Miss Hazel Buckland, Miss Louise McCarthy, Miss Beatrice White, Miss Esther White, Miss Dorothy Guild, Miss Helen Coulter, Miss Marguerite Creighton, Miss Gemma Wadman, Miss Marguerite Wadman, Miss Norma Adams, Miss Dora Ambrose, Miss Dorothy Wood, Miss Jessie Kennedy, Miss Mary Lucas, Mrs. F. J. Patterson and Miss Alice Hoogs.

**Miss Beth Woods Entertains.**  
One of the prettiest affairs of the week is the Five Hundred party at which Miss Beth Woods is hostess this afternoon in compliment to Miss Margaret Restarick, whose engagement to Mr. Reynold McGrew was announced a short time ago. The first hint of the color to be carried out in the decorations was on the invitations, which were ornamented with violets, and the young ladies entered a bower of violets when they gathered at Miss Wood's home this afternoon. The flowers were arranged in bowls in all parts of the house. When the refreshments were served the violet scheme was further developed in the lavender-tinted ice cream and cake. The consolation prize, too, was a basket filled with violets. The first prize was a silver picture frame. Miss Wood's guests included Miss Margaret Restarick, Miss Ruth Soper, Miss Ruth Anderson, Miss Myrtle Schuman, Miss Dorothy Wood, Miss Dorothy Guild, Miss Helen Coulter, Miss Kate Lidgate, Miss Carrie McLain, Miss Milwood Deas, Miss Maye Biven, Miss Marguerite Wadman, Miss Daphne Damon, Miss Glenna McCracken, Miss Thelma Murphy, Miss Helen Spalding, Miss Eloise Wichman, Miss Bernice Halstead, Miss Iwaland Ripley, Miss Sybil Robertson and Miss Marian Peacock.

**More Interest Taken in "The Tourist"**  
The society folk who are taking part in "The Tourist," the society opera to be produced during Carnival week, are becoming more interested in the affair as the rehearsals are progressing. The members of the sextette are meeting at the homes of the members and are combining pleasure with work. Last Wednesday evening they rehearsed at the home of Miss Rose Herbert and after rehearsal was over the young folks devoted the evening to pleasure. Next Wednesday the sextette will be entertained at the home of Mr. Guy Macfarlane, where they will be guests at a dinner party to be followed by a rehearsal. The rehearsals come here often now and the pleasure taken in the work is such that the work seems less hard.

**Mr. and Mrs. George R. Carter Entertain.**  
Mr. and Mrs. George R. Carter entertained last evening for Mrs. H. D. Quincy who returned to Honolulu the guest of Mrs. Carter. The affair was most enjoyable as Mrs. Carter provided a novel entertainment for her guests. Much the fun-maker, amused his audience and Karl's quintet club furnished the sweet, quaint Hawaiian music for the dancing which followed.

**Mrs. Frederic Klamp Entertains.**  
Mrs. Albert Klamp was the complimentary guest at a dinner party on Monday evening at which Mr. and Mrs. Frederic Klamp entertained at their home at Aiea.

**Mrs. Andrew Fuller Entertains.**  
On Tuesday evening, Mrs. Andrew Fuller entertained at a prettily appointed dinner for Mrs. Stubbs who was formerly Miss Waterhouse of this city.

**Reception at St. Andrews.**  
On Thursday afternoon the ladies of St. Andrews Guild entertained the members of the other church societies at a reception at Guild Hall. The affair is a decided success and it is hoped that more such entertainments will follow. A musical and literary program was arranged, those taking part being Mrs. Ernest Ross, Miss We Mrs. Crosby Howard, and Miss Ges. Mrs. Charles Hall delighted the gathering by singing "My Laddie." Among those present were Mrs. M. von Holt, Mrs. John Waterhouse, Mrs. L. Tenney Peck, Mrs. Newtocke, Miss Mary von Holt, Mrs. Chess Hall, Mrs. A. W. T. Bottom, Mrs. E. W. Jordan, Miss Mary

**Marshall, Miss Nellie Marshall, Mrs. Herselle, Mrs. Doremus Soudner, Mrs. H. B. Restarick, Miss Restarick, Mrs. Robbins B. Anderson, Mrs. Alexander Lindsay, Jr., Mrs. Crosby Howard, Mrs. Ernest Ross, Miss Bertha Kopke, Miss Esther Kopke, Mrs. Burbank, Miss Hopper, Mrs. C. P. Cooper and others.**

**The Golf Tournament.**  
The golf tournament at the Cahu Country Club this week was very successful, though all of the ladies did not play. This is called the "climber" tournament and will be continued until the winner is crowned. It is hoped that more of the ladies will turn out for the next tournament.

**Mr. and Mrs. Hosman Entertain.**  
On Monday evening, in honor of the birthday of Kaiser Wilhelm, Mr. and Mrs. Hosman, who arrived in Honolulu by the Cleveland, entertained a number of friends at dinner at the Moana Hotel. The guests included some of the host's fellow passengers on the Cleveland who remained in Honolulu. Covers were laid for Dr. and Mrs. Hoerman, the Misses Hoerman, Dr. and Mrs. Wernicke, Mr. and Mrs. Harbers, Miss Marucha Hosman and the host and hostess.

**Mrs. F. B. McStocker Entertains.**  
On Wednesday afternoon Mrs. F. B. McStocker entertained informally for Mrs. C. A. Brown, who is visiting in Honolulu this winter.

**Mrs. C. S. Holloway Entertains.**  
Mrs. C. S. Holloway is entertaining at dinner this evening for Mr. and Mrs. George R. Carter and Mr. and Mrs. John R. Galt.

## DINNERWARE

HOUSE OF HONOLULU.

Quality, value and proper and courteous treatment have been the factors which have made us "The Dinnerware House of Honolulu." The careful selection of patterns and shapes of our open-stock dinnerware has added materially to the success of our China Department. Herewith few exceptional values:

- \$7.50 for a 50-piece set, American semi-porcelain, white with gold spray and edging.
- \$11.50 for a 50-piece set English semi-porcelain, famous Blue Willow design.
- \$25.00 for a 100-piece set, German China, pink spray decoration with gold edging.

**W. W. DIMOND & CO., LTD.,**  
53-57 KING STREET

Everybody Admires a Beautiful Complexion.

**DR. T. FELIX GOURAUD'S Oriental Cream**  
OR MAGICAL BEAUTIFIER

An Indispensable and Delightful Toilet Requisite for Fashionable Women.

A daily necessity for the ladies' toilet whether at home or while traveling. It protects the skin from injurious effects of the elements, gives a wonderfully effective beauty to the complexion. It is a perfect non-greasy Toilet Cream and positively will not cause or encourage the growth of hair which all ladies should guard against when selecting a toilet preparation. When dancing, bowling or other exertions heat the skin, it prevents a greasy appearance.

Gouraud's Oriental Cream has been highly recommended by physicians, actresses, singers and women of fashion for over half a century and cannot be surpassed when preparing for daily or evening attire.

Gouraud's Oriental Cream cures Skin Diseases and relieves Sunburn, Itching, Pimples, Rash, Freckles and various eruptions. It restores the skin to its natural beauty, giving a soft, clear and refined complexion which every woman desires.

For sale by Druggists and Fancy Goods Dealers.

**Ferd. T. Hopkins, Prop., 37 Great Jones Street, New York.**

## Public Drinking Cups Are Tabu

If your children use them they are exposing themselves unnecessarily to the danger of contracting disease.

Individual drinking cups are recommended by the Board of Health for school children.

### The Only Safe Plan for Your Child

We have the ideal cup, made of aluminum collapsible, light weight and sanitary.

15 CENTS EACH—2 FOR 25 CENTS.

## Benson, Smith & Co.,

Limited.  
Fort and Hotel.

# REMINANT SALE

An enormous quantity of Fresh Merchandise in serviceable lengths at **HALF THE REGULAR PRICE**

Sale will continue on Monday, Feb. 3rd

# N. S. Sachs Dry Goods Company, Ltd.

# SOCIETY

ONE of the delightful affairs of the week was the dance at which Miss Bernice Halstead entertained her friends at the Oahu Country Club last evening. The color scheme for the decorations was yellow and was carried out with yellow cosmos. Electric lights shaded with Japanese lanterns made a very attractive setting for the lovely frocks worn by the young ladies. The evening was a scene of much gaiety and laughter and the young people danced to the music of Knuts Glee Club till early morning. The guests included:

The Misses Ruth Anderson, Catherine Ashley, Catharine Blake, Cecelia Broadhoff, Geraldine Be. 3, Maud Ballentyne, Hazel Beckford, Frances Cochran, Mildred Chavin, Daphne Damon, Ellen Dowsett, Mac Bliven, Ina Ferguson, Marjorie Gilman, Dorothy Guild, Hazel Geer, Helen Coulter, Alice and Fanny Hoogs, Gladys Har'edd, Rosie Herbert, Florence Hoffman, Muriel Howat, Beryl Jones, Crigton Jones, Catherine Jones, Margaret and Helen Jones, Ruth Johnstone, Mabelle Krumann, Jessie Kennedy, Clara Low, Laura Low, Miss La Bern, Carrie McLean, G. McCrocker, Lahoma Morgan, Thelma Murphy, Miss Martin, Catharine Paris, Dorothy Peterson, Marjorie Peterson, Carol, Pearl, Margaret Restarick, Ruth Epper, Fern Spalding, Janet Shaw, Myrtle Steinman, Violet Steyer, Margaret Thurston, Wilhelmina Tenney, Margaret Wadman, Gertrude Wadman, Pett Woods, Dorothy Woods, Eloise Wichman.

Messrs. John Ashley, Dwight Beldwin, Mr. Burdick, Albert Bush, Shirley Bush, Mr. Brown, Gustave Ballew, Marston Campbell, Francis Cooper, Reginald Carter, Bernard Damon, Lewlyn Dowsett, Walter Dusenber, Mr. Borden, Alfred Eames, Oscar Emory, Edmund Heisterman, Mr. Barter, Charles Foster, Theodore Cooper, Mr. Cooke, Mr. Fitz, Arthur Gilman, John Galt, John Gifford, Harold Gear, Harold Hustace, Cyril Hoogs, W. Hoogs, Charles Herbert, Harry Homan, James Hind, William Harris, Stanley Kennedy, Woods Low, Blakeley McStocker, B. McCracken, Harold Morgan, J. N. Morgan, James Morgan, Guy Macfarlane, Dixon, Not, Peter Nottage, John O'Dowd, James Peterson, Roy Patten, Will Paff, Allan Reinton, Kenneth Reifford, Mr. Ricker, Irwin Spalding, Elsie Stamp, Willie Schuman, Oswald Stevens, Edward Schenkel, Elmer Tattle, Malcolm Tate, Wren Timberlake, Vernon Tenney, Yarrak Turner, Mr. Hicks, Walter Spalding, Robert Von Tempisky, Carl Broadhoff, Frank Winter, Parker Woods, Fred Wichman, Mr. Wine, Leslie Wishard, R. McGrew.

**Country Club to Entertain.**  
The Oahu Country Club has arranged an unusual and delightful program for an informal evening at the beautiful clubhouse next Friday. Melini, the wonderful slight-of-hand performer, and entertainer who has arrived here after a successful season on the mainland will furnish a unique attraction in a series of exhibitions that will show his great skill and ready wit. Following this there will be an informal dance. The event is looked forward to with much interest.



Mrs. Mark A. Robinson, who is married to Mr. Robinson was one of the society affairs of October. She returned to Honolulu last week from a wedding tour in New York. Mrs. Robinson will make their home at Puukoa.

**Entertain.**  
Mrs. Frederick J. Lowrey was hostess at a prettily appointed dinner on Thursday evening at her home on Lunalilo street. The color scheme for the decorations was yellow and was carried out with exquisite yellow chrysanthemums. Covers were laid for ten, including Governor and Mrs. Walter F. Frear, Mr. and Mrs. H. K. Bishop, Mr. and Mrs. Albert Horner, Mr. and Mrs. George Sherman and Mr. and Mrs. Frederick J. Lowrey.

**Song Recital Unusual Success.**  
The lower pavilion of the Young Hotel roof garden was filled to capacity last evening for the song recital by Mrs. F. G. Williams. The affair was a decided success and Mrs. Williams was the recipient of a great deal of applause and a large number of flowers. Her enunciation is splendid and her high notes very sweet. Her technique was notable, showing the benefits of thorough training. This was Mrs. Williams' first appearance before a Honolulu audience but she displayed no nervousness.

Mr. John Gifford, the youthful violinist, who ably assisted Mrs. Williams, may well be called a boy wonder. His first selection, Danciel's "Resignation" was excellent and those who never heard the young man have expressed a great deal of surprise at the skill he displayed. Those who heard Maud Powell play Beethoven's "Minuet" and who heard Mr. Gifford play the piece last night, compared the work of the two and the comparisons were not at all unfavorable to Mr. Gifford. The grace and ease with which the young man handles the violin is rather that of a mature years man of a sixteen year old boy. Mrs. W. L. Gifford played a pathetic accompaniment for her son. Mrs. Poivine accompanied the singer. Several obligatos were beautifully played by Mrs. A. E. Ingham.

Following program was rendered:  
"Oh, I Jubal's Lyre".....Handel  
a. Oration.....de Fontenailles  
b. Aetere grossen Schmerzen  
c. Do Pure.....Scudere  
Resignation.....Danciel  
Mr. Gifford  
"Come, With Me and Be My Love"  
Doris obligato by Mrs. Ingham  
a. My is in the Highlands  
b. My is Like the Red, Red Rose  
a. Minuet.....Schumann  
b. L'Abbe.....Schubert  
Mr. Gifford  
"With a Soft Wind"  
a. "Soft Wind"  
b. Spring  
c. with cello  
Mrs. Cutts  
Mrs. Stoll  
Mrs. R. R. Goodell.

who have been for the past few weeks visiting in Honolulu, were the guests of honor at an informal bridge whist party on Monday afternoon at which Mrs. Cutts, wife of Captain Cutts, was hostess, at her home on Pihoko street. Vases of yellow flowers were attractively arranged throughout the house. The prizes were baskets of violets and were given to Mrs. R. R. Goodell and Mrs. William P. Wooten. Among those present were Mrs. R. R. Goodell, Mrs. Stoner, Mrs. C. B. Cooper, Mrs. Cheatham, Mrs. Denman, Mrs. Walter C. Cowles, Mrs. Neville, Mrs. William C. Wooten and Mrs. Cutts.

**Miss Louise Effinger Entertains.**  
Miss Louise Effinger is hostess at a Five Hundred party this afternoon at the Oahu Country Club. The club house is simply but effectively decorated with palms for the occasion. The guests include Miss Dorothy Hoogs, Miss Stella Hoogs, Miss Maud Margaret Thurston, Miss Florence Balfour, Miss Frances Neville, Miss Dorothy Peterson, Miss Dorothy Wood, Miss Lillian McChesney, Miss Heister Pratt, Miss Hilda von Holt, Miss Junie Yawborough, Miss Alice Yawborough, Miss Maybelle Kiumann, Miss Ellen Williams, Miss Mary Smith, Miss Genevieve Taggart, Miss Laura Cassidy, Miss Dorothy Guild, Miss Helen Coulter, Miss Maud Ballentyne, Miss Rhoda Ballentyne, Miss Charlotte Lallo, Miss Eleanor Gartley, Miss Jane Singlehurst and Miss Alice Effinger.

**Mrs. P. S. Simpson Entertains.**  
On Tuesday afternoon Mrs. H. S. Simpson was hostess at a bridge party at her bungalow on Anapuni street. The guests of honor for the occasion were Mrs. L. Hurd and Miss Dorothy Hurd, who are spending the winter months in Honolulu. Mrs. Simpson's home was prettily decorated with red carnations and maiden-hair ferns. The first prize, a mettack vase, was given to Mrs. Edwin Bennett, and the consolation, a basket of violets, was carried off by Mrs. Otto Bierbach. Among those present were: Mrs. L. Hurd, Miss Dorothy Hurd, Mrs. Lewis Underwood, Mrs. George Henderson, Mrs. F. L. Waldron, Mrs. A. N. Sinclair, Mrs. A. Prescott, Mrs. T. O'Brien, Mrs. F. J. Lineman, Mrs. William Goetz, Mrs. Charles Bon.

**The Service Bridge.**  
The Service Bridge Club was entertained on Wednesday afternoon by Mrs. Cutts at her home on Pihoko street. The prizes were taken by Mrs. Jameson, Mrs. Neville and Mrs. Kirby Smith. Among those present were Mrs. W. P. Wooten, Mrs. W. C. Neville, Mrs. Raymond, Mrs. Cheatham, Mrs. Denman, Mrs. George E. Turner, Mrs. Harold Pratt, Mrs. F. B. Edwards, Mrs. Watkins and Mrs. Cutts.

**Mr. and Mrs. George Wilhoit to Entertain.**  
Mr. and Mrs. George Wilhoit of Stockton, California, are entertaining at dinner at the Moana Hotel tomorrow evening.

**Mr. Harry A. White Weds Fresno Girl.**  
A marriage of unusual interest to friends all over Hawaii is that of Mr. Harry A. White, of this city, and Miss Ruth M. Ford of Fresno and formerly of Wisconsin. The marriage was solemnized at high noon on Monday, January 20, at Fresno, Cal.

Although the bride is not personally known here, report speaks of her as an exceedingly attractive and accomplished young lady.

Mr. Harry White is the son of Mr. and Mrs. E. O. White of this city and has friends all over the islands. He was born in Honolulu and received his grammar and high school education here, graduating from the high school when it was on Emma street. He then went to Stanford University, graduating in 1910 and at once taking up a business career, where he has made rapid progress. Entering the employ of the Pacific Telephone and Telegraph Company, he rose step by step, until last July he was advanced to the position of traffic superintendent of a large section of the southern part of California, with headquarters at Fresno, where he met Miss Ford.

Miss Ford is from Wisconsin, the daughter of Mrs. J. C. Ford of Fargo. She has been living in Fresno for several years. After the marriage on January 20 the young couple left Fresno to spend part of their honeymoon in San Francisco, and word from them at the latter city was received Tuesday.

The following account of the arrangements for the wedding published in a Fresno paper, will be of interest to the friends here:  
"The marriage of Miss Ruth M. Ford and Harry A. White, which will be an event of Monday, is absorbing much interest from the friends of the popular young couple. The ceremony is to take place at high noon at the home of Mr. and Mrs. Don Pardee Eggs, Rev. Thomas Boyd officiating. A pink and white color scheme is to be observed, roses being the blossoms and a supplement of greenery lending a pretty effect to the attractive rooms.

Miss Ford is to be gown in a lovely model of crepe tencor, made entraine with white chiffon overdrapery and ornamented with pearl pessenmenterie. A bertha and sleeve ornamentation of Venetian lace will lend richness to the costume. She will carry lilacs of the valley.

Miss Zoe Glasgow who is to be her only attendant will be attired in white crepe de chine with panteres of pink striped chiffon. With it she will wear a head dress of pearls in bandeau effect, with a bird of paradise at the side. She will carry a shower of pink bride's maid roses.

Little Margaret Cosgrave and Kenneth Platt will serve as ribbon bearers. Among the out of town guests who will be in attendance are the bride's mother, Mrs. J. C. Ford, who arrived several days ago from Fargo, Wisconsin, and Ralph Sanborn, of San Francisco, who is to serve as best man.

The wedding breakfast will follow the ceremony the color scheme being pink and white.

**Little Daughter of Mr. and Mrs. George W. Wallace Christened.**  
On Sunday the little daughter of Mr. and Mrs. George W. Wallace of Wailua was christened. The tiny girl was given the name of her grandmother, Caroline Georgia. Mrs. John Kindred stood sponsor for the child. Mrs. Wallace was formerly Miss Lillian Robertson, the daughter of Mr. and Mrs. George H. Robertson.

**Mrs. A. G. M. Robertson Entertained.**  
One of the prettiest teas of the week was that at which Mrs. A. G. M. Robertson entertained on Monday in compliment to Mrs. Robert Hair, who is visiting at the Colonial. Mrs. Robertson chose the delicate pink hibiscus for her decorations and baskets of the tropical blossoms were arranged throughout the house. Mrs. Robertson was assisted during the afternoon by a number of her friends and by a bevy of attractive young girls. An enjoyable musical program was arranged and several ladies, including the hostess sang and rendered selections on the piano.

**SOCIETY PERSONALS**  
Mrs. D. E. Metzger, of Hilo, will arrive in Honolulu in a few weeks and Mr. and Mrs. Metzger will occupy the Fairweather cottage on Kinau for the next three months. Mr. Metzger is a senator-elect from Hawaii.

Mrs. S. G. O. King, who has been in Honolulu for several months as the guest of the Princess Kalamanaoale and other relatives left in the Mongolia Wednesday with her son, Ralph King.

Mr. A. T. Henderson leaves by the Honolulu for San Francisco, to be gone a couple of months or more. She is called away by her mother's illness, which is said to be quite critical.

Bishop Fallows and Colonel Fallows, who were through passengers in the Manchuria Wednesday, were guests of Mr. and Mrs. Arthur B. Ingalls during the time they were in Honolulu.

Miss Lydia McStocker, who has been visiting in the east for the past few months, writes from Philadelphia that she expects to return to Honolulu some time in March.

Mrs. Edward Blanchard made a flying trip to this city this week. She arrived in Honolulu on Sunday and returned to Hamakuapoko, Maul, on Monday evening.

Mr. and Mrs. Arthur L. Loomis, who have been at the Moana for the past few weeks, were outgoing passengers in the Mongolia Wednesday.

Dr. and Mrs. Stoner, who have been visiting here for the past few weeks, were outgoing passengers in the Mongolia Wednesday.

Mrs. George Wallace of Wailua is spending a short time with her mother, Mrs. George Robertson, on Artesian street.

Mr. and Mrs. S. A. Baldwin were departing passengers in the Mongolia Wednesday.

Mr. and Mrs. C. Hedemann were outgoing passengers in the Mongolia on Wednesday.

Miss Mary Alexander was an outgoing passenger in the Mongolia on Wednesday. (Additional society today on page 8.)

**BLOM'S**  
**Clearance Sale**  
Is  
**On the Way**  
Are You  
**On the Way**  
To  
**BLOM'S**  
**Fort and Hotel**

W. P. FULLER & CO'S  
**PURE REPAIRED PAINT**  
Is made of pure white lead, pure oxide of zinc, pure linseed oil and coloring pigment, and without an adulterant. A PAINT FOR BEAUTY AND FOR WEAR.  
Ask for color card.  
**Lewers & Cooke, Ltd.**  
177 So. King Street

For  
**SUN-HEATERS**  
and  
**FENCE**  
See  
**J. C. AXTELL**  
Alakea Street.

STAR-BULLETIN \$ .75 PER MONTH

**FURNITURE SALE**  
**Feb. 1st to 15th**

**Red Tag Furniture Sale**  
—AT—  
**Coyne's**  
YOUNG BILDING BISHOP STREET

**FURNITURE SALE**  
**Feb. 1st to 15th**

# Locomobile 5-Ton Truck

## The Most Practical Truck in the Market Today Especially Adapted for Work in These Islands

### FEATURES

- Every part designed for Heavy Duty Truck.
- Standards of Workmanship.
- Quality of Material.
- Powerful Motor
- Five Bearing Crank Shaft.
- Liberal Tire Equipment.
- Four Speed Transmission.
- Wide Faced Gears.
- Governor Control.
- Interchangeable Demountable Tires.
- Large Front Wheels.
- Strongest obtainable Driving Chains.
- Chain Cases.
- Differential Lock.
- Steel Wheels.
- Dry Disc Clutch.
- Sprag.
- Accessibility of Units.
- Ignition and Oiling System not subject to driver's control.

### DESCRIPTION

**T**HE body is rigidly attached to the platform at the sides and front end, the baseboard presenting no opening at the floor level.

The sides have five slats, with a flareboard on top; the top slat having extra depth to provide added strength.

The rear end is provided with four removable stakes, which are joined to the sides by means of two chains. The top is made integral with the body, and is equipped with front rear and side storm curtains, with large celluloid lights giving an unobstructed view in all directions.

Signboards, 38 x 60 inches, are carried on each side of the body.

The driver's seat is detachable, and has a tufted leather cushion and back.

The body is constructed of the best materials, and is well braced with iron in all parts.

### ACCESSIBILITY

This Truck was designed to make all parts easily accessible.

The engine, clutch and transmission can be removed individually without disturbing other units.

The crankshaft, transmission and clutch are accessible from below, doing away with the necessity of removing either the body or the load when making such inspections as proper maintenance may require.

The front seat can be tilted so as to swing out of the way, or it can be readily removed.

The whole seat super-structure can be taken off by removing eight bolts.

## ROYAL HAWAIIAN GARAGE,

Geo. S. Wells, Manager      Limited      Exclusive Agents

## In Business Circles--News and Review

EDITED BY DANIEL LOGAN

### BUSINESS FOR SIX DAYS GAINS NEARLY \$80,000

In That Time Seven Out of Sixteen Stocks Have Risen in Price

**ALL TRANSACTIONS AMOUNT TO OVER \$150,000**

Statement of Exchange Business for Last Month — Dividends in January Aggregate More Than Half a Million Dollars

Transactions of the Honolulu stock and bond exchange show a very substantial gain in volume for the six days ended at noon yesterday as compared with those for the corresponding period ended last week. Prices have also improved, increases having a large plurality over declines, while stocks holding their own are just double those that have lost ground.

Sales of stocks have amounted to \$150,043.87 1/2, against \$1,262.50 last week, an increase of \$179,181.37 1/2, while the par value of bonds sold is \$5300, against \$21,000 last week, a decrease of \$16,700. The totals are respectively \$155,743.87 1/2 and \$102,262.50, the net gain of all transactions being \$53,481.37 1/2.

Of ten sugar stocks changing hands, four have gained in price, four remained stationary and two declined, as between the first and the last day of the period. Six non-sugar stocks show increases in three, no change in two and decline in one. Last sale records on Saturday last and yesterday were respectively as follows:

**Opening and Closing**

Ewa Plantation Co., 26.25 and 26.50.  
 Haiku Sugar Co., 28.50 and 28.50.  
 Hawaiian Commercial & Sugar Co., 33.27 1/2 and 34.  
 Hawaiian Pineapple Co., 44.50 and 45.  
 Honokaa Sugar Co., 7.62 1/2 and 7.02 1/2.  
 Honolulu Brewing & Malting Co., 24 and 24.  
 Hilo Railroad Co., 107 and 107.

Haw. Com. & S. Co.	1,437	34	32 1/2	\$348,632.
Haw. Sug. Co.	220	35 1/2	35	
Honokaa Sug. Co.	750	7 1/2	7 1/2	
Haiku Sug. Co.	30	12 1/2	12 1/2	
McBryde S. Co. Ltd.	300	4 1/2	4 1/2	
Oahu Sug. Co.	2,042	23 1/2	23 1/2	
Onomea Sug. Co.	1,325	33	32	
Olaa Sug. Co. Ltd.	307	4 1/4	4	
Paanahu S. P. Co.	1,000	16 1/4	16 1/4	
Pioneer M. Co.	1,960	27	26 3/4	
Waialua Ag. Co.	47	95	90 1/2	
Mut. Tel. Co.	150	28 1/4	28 1/4	
O. R. & L. Co.	230	140	135	
Hilo R. Co., Com.	475	7	6 3/4	
Hon. B. & M. Co.	977	24	22	
Haw. Pine. Co.	1,368	45	44	
Fahang Rub. Co.	560	20 1/4	19 1/2	
Cal. B.S. & Ref. Co.	9,000	100	100	
Hon. Gas Co. Ltd.	5	1,500	100	
Hilo R.R. 1901 Cs.	4,000	99	99	
Hilo R.R. R.&E. 6s.	320,000	94 1/2	94	
Kaula Ry. Co. 6s.	5,000	100	100	
McBryde S. Co. 5s.	3,300	97 1/4	97 1/4	
Mut. Tel. 6s.	4,000	103 1/2	103 1/2	

Details of transactions for the six days were as follows:

**Stocks**

Ewa Plantation Co., 300 shares for \$7950; price, 26.50.  
 Haiku Sugar Co., 10r shares for \$1285; price, 128.50.  
 Hawaiian Commercial & Sugar Co., 397 shares for \$13,490.50; high, 34; low, 33.75.  
 Hawaiian Pineapple Co., 988 shares for \$43,956.50; high, 45; low, 44.25.  
 Mutual Telephone Co., 50 shares for \$1412.50; price, 28.25.  
 Oahu Railway & Land Co., 60 shares for \$8400; price, 140.  
 Oahu Sugar Co., 645 shares for \$14,838.125; high, 23.125; low, 23.  
 Olaa Sugar Co., 70 shares for \$295; high, 4.25; low, 4.125.  
 Onomea Sugar Co., 495 shares for \$16,125; high, 33; low, 32.50.  
 Pahang Rubber Co., 220 shares for \$4412.50; high, 20.125; low, 20.  
 Pioneer Mill Co., 993 shares for \$26,753.75; high, 27; low, 26.875.  
 Waialua Agricultural Co., 10 shares for \$950; price, 95.  
**Bonds.**  
 McBryde Sugar Co. fives, \$3900 at 97.75.  
 Mutual Telephone Co. sixes, \$2900 at 104.  
**Transactions for January.**  
 Following is a statement of transactions for January, with high and low respectively:

No.	Shares	High	Low
Ewa Plan. Co.	500	26 1/2	24 1/2

**BUSINESS ITEMS**

An industrial disaster of large proportions happened this week in the burning of the Hawaiian Development Co.'s lumber mill at Pahoa, Hawaii, together with four million feet of fine hardwood lumber. The loss is estimated at half a million dollars and there was no insurance on the property.

According to the report of the president and manager, J. B. Dole, the pack of the Hawaiian Pineapple Co. for last year amounted to nearly eleven million cans. Undivided profits of the company were increased by about \$56,000, bringing the amount up to

### MANY SHARES CHANGE HAND

Oahu sold rather freely at a decline of 1-8th point between the 1st and 10th of January, the 10th of 70, 64, 120 and 25 at 23 being reported. Onomea has made a bid one point to 33 for 55 shares. Her sold unchanged in repress at for 100 and 60 shares, but advance eighth on the board for 65 shares for three unequal lots, although common price was still reported for 100 shares reported. Hilo road common remains at the low price, 6.75, for a block of 20 shares. Pahang Rubber was scaled in an eighth in recess to 29 for 100 shares. In a reported sale on the board, besides Pioneer all shares of the only sale was one of 45. Pineapple advanced a half point to \$148,200, namely: C. B. & Co., 150, or \$45,000; Ewa, 15, or \$37,500; Waialua, \$2, or \$40; Hawaiian Electric, 75 cents, or \$225; Honolulu Brewing & Malting, 20 cents, or \$2000; I. I. S. N. Co., 10 cents, or \$10,000; Kahuku, 10 cents, or \$1,000; Waimea, \$2, or \$2000; Kekahe, \$1, or \$15,000.

Hollister Drug Co. is today celebrating with music the distribution of gifts to customers and of its renovated store and with the ace cream stand, topped by Meyer and cession to control of the Harbor naval A. J. Gignoux, president and vice president respectively of the corporation. The business is of 15 years' standing.

Property owner, Kalihii are figuring on a boom requirement on the development of the well as steam station, with electric communication through Kalihii.

O. G. Trapnell architect, is coming in the San Francisco due on Monday, to advise the trustee of the Big Street relative to a building on Big Street opposite the Young Hotel.

Bull influence prevailed on the New York stock exchange yesterday, with the department largely to dividend pay announcement that of 2 1/2, per cent of the stock of \$15,000,000 of 100,000 shares.

Hawaii as in San Francisco as follows: Hawaiian Commercial 12 bid, 26 1/2 ask; Hilo 36 5/8 bid; Honolulu 7.75 bid; Hutchinson, 16.37 1/2 bid; Kilauea, 12 bid; Onomea, 32.75 bid, 33 ask; Paanahu, 16.37 1/2 bid; Union, 23 bid, 32 ask; Honolulu Plantation, 39.25 sold; Honolulu Oil, 130 ask.

## HAWAIIAN TRUST CO.

Limited.

STATEMENT OF RESOURCES AND LIABILITIES, DECEMBER 31, 1912.

ASSETS		LIABILITIES	
Cash on hand and checks..	\$ 10,655.90	Capital fully paid up.....	\$200,000.00
Cash in bank .....	37,074.99	Employees' pension fund....	10,000.00
Due from Agents .....	41,664.17	Trust and agency accts....	211,063.09
Bonds in other corporations	142,285.75	Liabilities other than those specified above .....	595.00
Loans demand and time....	223,747.39	Undivided profits .....	141,418.89
Real estate .....	7,058.35		
Office furniture and fixtures	5,311.17		
Accounts due us at interest.	6,398.17		
General accounts due us ..	21,383.83		
Assets other than those specified above .....	3,736.97		
Employees' pension fund and investment account .....	10,000.00		
	\$563,076.89		\$563,076.89

Territory of Hawaii )  
 ) ss  
 City and County of Honolulu )  
 I, John R. Galt, Treasurer of the Hawaiian Trust Company, Limited, do solemnly swear that the above statement is true to the best of my knowledge and belief.

JOHN R. GALT,  
Treasurer.

Subscribed and sworn to before me this 11th day of January, A. D. 1913.  
 J. E. O'CONNOR,  
Notary Public, First Judicial Circuit, Territory of Hawaii.  
 5447—Jan. 18, 22, 25, Feb. 1.

## ELECTRICITY

### The Key To Power Economy

Wherever electricity supersedes steam or gasoline engine drive there is effected a great saving of money.

**MOST CONVENIENT, SANITARY AND RELIABLE POWER**

We are prepared to make recommendations and furnish prices for the installation of motors for industrial application.

**The Hawaiian Electric Co., Ltd.**

BAR GAIN

Special Sale of

BAR GAIN

Slightly Used Automobiles

Including such well-known makes as

Packard, Buick, Cadillac, Overland, Stevens-Duryea, Hupmobile, Kissel Kar and others

Each car is thoroughly overhauled and put into first-class condition.

List of cars:

Table listing various car models and their prices, including Cadillac Runabout, Buick Touring, and Packard Roadster.

You are invited to call in and see these cars, every one of which is a bargain at the price asked.

The von Hamm-Young Co., Ltd.

Honolulu, T. H.

MOTOR CAR GOSSIP



SEASON DEVELOPS SOMETHING REALLY NEW IN AUTOMOBILES

This season has developed something really new in motor cars—the first novelty for several years. It is not an experiment, but a permanent advance in design and construction...

are rounded and flowing, and everything that would break them—like the usual boxes on the running board, for instance—has been taken care of in the same way. An absolute innovation in spring suspension, and an adjustable rear seat, which also is a complete novelty, are important features of the car...

FORDS BECOMING POPULAR OVER TERRITORY

This year more than ever before in the history of automobiling in this territory, are the Fords becoming popular as a pleasure car. The ability, strength and flexibility of the Ford is forcing it to the front until now the little car stands alone—in a class by itself, acknowledged by all as the best car ever produced for the money.

INDIAN PRINCES BUY MANY HUDSONS

Blonded East Indian sovereign princes, despite the many automobiles which are made in England, are flocking to the American car. They are fast abandoning their gorgeous formal equipages of state for the motor car made in the United States...

ed form of motor car on runners instead of wheels, has no power of its own, being drawn through the water and along the bottom of the sea by a power boat on the surface to which it is connected by wire cables, and with whose driver the diver is in communication by telephone...

THE FORD

IS the Car for the man who must get there. It goes farther on a set of tires, costs less to operate, and is always ready for the road.

- Best for the Doctor
Best for the Business Man
Best for the Army Officer
Best for the Money

The FORD has won every hill-climbing contest it has ever entered.

Come in and look them over and take a ride.

Schuman Carriage Co., Limited. Agents















# Put Up For Handy Reference

STEAMERS IN  
*This Type*  
LEAVE FOR THE COAST.

## Honolulu Star-Bulletin STEAMER DAY REMINDER

STEAMERS IN  
*This Type*  
ARRIVE FROM THE COAST.

STAR-BULLETIN Want Ads get quick results

FEBRUARY, 1913

Send your Printing to the STAR-BULLETIN

SUNDAY	MONDAY	TUESDAY	WEDNESDAY	THURSDAY	FRIDAY	SATURDAY
--------	--------	---------	-----------	----------	--------	----------

Let your advertising so shine that the people of the City will be attracted thereby and become your patrons. Help them to discover that you are in business to fill their wants. Thousands of dollars are to be spent each week when people know where they can get what they want. Are you getting your share of the trade? STAR-BULLETIN ADS DELIVER RESULTS.

1

2	Sierra 3	Transport 4 Honolulan	5	6	Chiyo Maru 7	8 Sierra Tenyo Maru
9	10	Lurline 11	Transport 12	13	Nile 14	15
16	Sonoma 17	Wilhelmina 18 Persia Lurline	19	20 Ventura	Mongolia 21	22
23	24	Honolulan 25 Korea Zealandia	Makura 26 Wilhelmina	Nippon Maru 27	28	Give Us Your 1913 ORDER For Good Printing

Follow the Crowd to Star-Bulletin Want Columns