

It is the Advertising Store that is the Flourishing Store

# EVENING BULLETIN

3:30 O'CLOCK ALL HONOLULU'S SUCCESSFUL STORES ARE BULLETIN PATRONS EDITION

One of the most prosperous of merchants has boiled his experience down to this maxim: "Advertising is the Staff of Business Life." Now, no man in trade who has his eyes open needs proofs of these truths, because advertising creates custom, and custom is the vitalizing element in all commerce. The EVENING BULLETIN is a daily example of the wisdom which makes a prosperous merchant!

### STEAMER TABLE

From San Francisco:	Mar. 12
Mongolia	Mar. 15
For San Francisco:	Mar. 9
Doric	Mar. 9
From Vancouver:	Mar. 8
Miowera	Mar. 8
For Vancouver:	Mar. 6
Aorangi	Mar. 6

Vol. IX No. 3635

HONOLULU TERRITORY OF HAWAII, FRIDAY, MARCH 8, 1907

PRICE 5 CENTS

## HAWAII'S IMMIGRANTS MAY BE LANDED

Honolulu, March 7, 1907

McClellan, Washington.

### Does Bonaparte immigration ruling bar Hawaii European immigrants now on way? BULLETIN

### Uncle Sam Will Do The Work

The enforcement of the provisions of the Federal Pure Food Law, and the conduct of all examinations and analyses under it fall upon the Federal officials and not upon the Territory, according to a cablegram received this morning by Governor Carter from Secretary of Agriculture Wilson.

The cable comes in response to a letter written by the Governor to the Secretary asking for information on the subject. The Governor did not know whether the Federal or the Territorial Government was responsible for the carrying out of the provisions of the Pure Food Act, and he wrote to Secretary Wilson to find out.

The Secretary replied by letter to the effect that Congress had not then made any appropriation for carrying out the provisions of the law, and he was unable to state at that time whether the enforcement would devolve on the Federal officials or the Territory.

Governor Carter was making up his estimates of needed appropriations, to be submitted to the Legislature, and did not know whether to include appropriations for this work or not. He finally sent in his estimates without the item, but wrote to the Secretary again, explaining the situation and asking him to cable whether or not Congress made appropriation for the pure food work.

The cable received this morning makes it unnecessary for the Territory to appropriate money for the work, but as no details were given it cannot be stated yet whether the Federal Government will furnish its own men and laboratories in the Territory to collect samples, make analyses, etc., or whether some arrangement will be made with the Territory whereby some combination can be effected. In his letter the Governor inquired concerning these matters. He wanted to know whether the Federal and Territorial work would be done in combination, as is the arrangement at present in regard to the work of the Bureau of Agriculture, and whether the Territorial laboratories would be used by the Federal officials, or new ones built and equipped. The Governor states that he wanted, if possible, to put in a good word for Food Inspector Duncan.

However, all such matters will be in abeyance until more details regarding the plans of the Department are received from Washington.

The new lighthouse to be erected at Makapuu Point will be built by day-labor and not by contract. This decision has been made by the Government and as the result the lighthouse will be completed some months before it would have been finished under other circumstances. The calling for bids, subsequent advertising and the delay, incident to the opening of bids and the other formalities, will be avoided by the manner of procedure which has been selected.

C. V. E. Dove's new insurance map of this city has been received from the mainland. It gives much detail which was lacking in the old maps, and is far more comprehensive, taking in the entire area from Kahauiki to Diamond Head. Insurance men who have seen it, pronounce it an excellent map. An erroneous report had it this morning that D. H. Kellian, the veteran police officer, was dead. Kellian is still among the living, although he is quite sick.

Waikiki Inn is now owned by W. C. Bergin. Accommodations, supplies and attendance absolutely first class. Finest bathing on the beach.

### SENATE WANTS TO KNOW ABOUT LOANS

#### Woods Prepares Questions For Treasurer To Answer

FOURTEENTH DAY.

Forenoon Session. A message was read from the Governor referring to his appointments of Queen's Hospital trustees, which he had submitted for the confirmation of the Senate. He had since discovered that this class of appointments did not need to be confirmed, and he therefore asked to withdraw the names. The request was granted.

The House notified the Senate of the appointment of a conference committee on Senate Bill 23, relating to forestry. The Senate members had already been appointed.

WANT BILL AMENDED. Smith reported for the Judiciary Committee on House Bill 32, in part as follows:

"The object of the bill is to permit qualified electors to vote who failed to register before the Board of Registration because of sickness or absence from the Territory during the registration period.

"We approve of the object sought to be obtained by the bill but do not approve of the provisions that such electors may qualify before the inspectors of election, but believe that they should appear before the members of the Board of Registration."

Hayselden reported for the Lands Committee on Senate petition No. 9, relating to the claim of W. A. Keolis of Kipahulu for \$50.40 for damages for land used for road purposes, recommending that it be tabled. Adopted.

POSESSORS FOR CAMPBELL.

Woods offered the following resolution:

Resolved that the Treasurer of the Territory of Hawaii be and he is hereby requested to forthwith furnish the Senate with the following information:

1. By what officer or officers of the Territory each of its three (3) loans were negotiated?

2. The amount of commission, if any, paid to any person, firm or corporation for services rendered in and about any or all of such loans?

3. Whether or not there is any person, firm or corporation, which is now acting or has heretofore acted as a Financial Agent or Agents, or in a similar capacity, for the Territory, and if so, the name, residence or place of business of the same, together with his, their or its authority as such agent or agents, and by whom granted, and his, their or its compensation, if any, for so having acted or acting?

4. Has any payment for commission, brokerage, or otherwise, for services in floating or negotiating any or all of the loans of the Territory of Hawaii ever been promised by the Territory through its agent or agents? If so, to whom? By whom? And what amount?

5. Has any person, firm or corporation made any claim or claims, demand or demands, for brokerage or commission in connection with any (Continued on Page 2)

Do not get your dates mixed for Saturday evening as you can hardly afford to miss the dance at Odd Fellows Hall, given by the Diamond Head Athletic Club. Good music is assured, and you know the boys.

A bright boy is wanted to learn an AI trade. See ad this issue.

### Furniture

LARGEST AND FINEST STOCK IN THE ISLANDS.  
J. Hopp & Co.,  
YOUNG BUILDING.

### Good News For Territory

Secretary McClellan's response to the special cablegram sent to him yesterday by the Bulletin was good news indeed to the members of the Immigration Board to whom it was communicated this forenoon.

Early yesterday the Bulletin sent a cable query to the secretary of Delegate Kahio asking if the ruling of Attorney General Bonaparte would shut out the immigrants which had already been recruited in Spain and Portugal and their passage to Hawaii arranged.

The matter is of vast importance to this Territory, for refusal to allow these immigrants to enter would mean a complete loss of nearly \$200,000.

The Cabinet decision means that from 3000 to 4000 immigrants will be allowed to come to Hawaii by the steamers Hopolis and Kumeric now under charter. This will help some and at least guarantee the Immigration Board against heavy loss.

"That is mighty good news," said E. D. Tenner, Superintendent of Immigration, when the Bulletin conveyed to him the substance of its cable. Up to that time the Immigration Board had not received an answer to its cables sent yesterday. The presumption is that the status of Hawaii's immigration work was discussed at the meeting of the President and Cabinet this morning, and a decision reached in favor of the Territory.

### Inspector Gets Order

WASHINGTON, D. C., March 8, '07.

To BROWN, Immigration Inspector.

Immigrants on two ships mentioned will be admitted subject to same regulations as those previously issued.

(Signed) STRAUSS.

The foregoing cablegram to Immigration Inspector Brown from Secretary Strauss of the Department of Commerce and Labor tells its own story. The immigrants mentioned are those intending to come on the Hopolis and Kumeric, already under charter.

### FIRE

is not particular, but to burglars your silverware and other valuables are alone desirable. They do not care about yourself. Provide, therefore, a home for these valuables in one of our safe deposit boxes, the rent of which is 50 cents a month.

### Hawaiian Trust Company, Ltd.

Fort St. Honolulu

Bulletin, Honolulu.

### Cabinet decision these two shiploads admissable same conditions as Suveric. McCLELLAN

### HOUSE CONSIDERS THE LEPROSY BILLS

#### Passes Measure For Kalihi Receiving Hospital

FOURTEENTH DAY.

Forenoon Session. Kaniho, the kicker from Kohala, was, as usual, the chief orator of this morning. He always speaks on all subjects, and usually speaks to register a kick. No measure that is not designed to benefit his constituents and nobody else can have his approval, except in rare instances.

The principal subject for debate this morning was the leprosy question. There were two bills before the House, which both came up on third reading. One provides a hospital to be built at the Kalihi Receiving Station, and for the treatment of leprosy suspects, or those known to have leprosy. The other bill would make it the duty of all officers, deputy sheriffs and physicians to report to an agent of the Board of Health all cases of suspected leprosy.

The attitude of the members of the House on the leprosy subject was very clearly shown by their vote on the two bills. The first carried with no opposition, and the second was unanimously tabled.

President Pinkham asked for the re-approval of \$52,459 of the loan fund, which had lapsed, and for the changing of the former recommendation for Injane Asylum appropriations to read as follows: Salaries, pay rolls, \$26,760; maintenance, \$15,000.

The Lands Committee reported on House Resolution 81, providing \$50,000 for three roads on Maui. It stated that two of them had been provided for by the 1905 bill, but recommended the insertion of the third item, \$15,000 for a belt road from Kukuia, Kipahulu, to Mokuiau, Kapo, Hana.

The same committee reported on House Resolution 74, appropriating \$10,000 for repairs of the road from Honolulu Gulch to Kapue Gulch, Hilo. The Department of Public Works has recommended a relocation of the road through Honolulu Gulch, the estimated cost of which is \$23,000, and the committee recommended that the latter item be inserted instead of that contained in the resolution.

The Lands Committee reported on House Petition 14 from Molokai, asking for an \$8,000 item to be inserted in the appropriation bill, to complete the second section of the Halawa, Panohaku road. It reported that it had received an opinion on the subject from the Attorney General, finding that the work came under the Territory, having been begun (Continued on Page 5)

An excellent program, including songs, recitations, flag drills and a patriotic musical sketch, has been prepared for the entertainment which is to take place at the Susannah Wesley Home tonight at 7:30 o'clock.

Ehlers hats are THE hats this year.

### DON'T FORGET YOUR FRIENDS

Leave an order for a box of choice Pineapples or a bunch of selected Bananas at WELLS-FARGO OFFICE KING ST.

Washington, D.C., March 8, 1907

### Bonaparte's Decision Does Not Affect Us

WASHINGTON, D. C., March 8.—It has been authoritatively stated that the recent opinion of Attorney General Bonaparte in regard to assisted immigration does not apply to Hawaii.

SPANIARDS DISAPPROVE

MADRID, Spain, March 8.—The agitation here against emigration is very active.

LOUISIANA DESPONDENT

NEW ORLEANS, La., March 8.—The opinion is being expressed that Attorney General Bonaparte's decision will interfere with the plans to induce white immigrants to come to Louisiana.

SONOMA CREW FREE

SYDNEY, Aus., March 8.—The striking members of the crew of the steamship Sonoma have been released. They are destitute.

ENGLAND BUYS BONDS

LONDON, Eng., March 8.—There is a big bid here for the new Japanese four-per-cent. bonds.

SAN FRANCISCO, Cal., March 8. Abe Ruef has not yet been found. Attorney Shortridge has been ordered by Judge Dunne to imprisonment for contempt of court. Habeas corpus proceedings have been invoked. The hearing will take place next Monday.

SAN FRANCISCO, Cal., March 7. SUGAR: 96 degrees Centrifugals, 3.51 cents or \$70.20 per ton. Previous quotation, 3.435 cents.

The little schooner Kaiwalani is ashore in Waianai Bay, according to reports received here this morning. The Kaiwalani went in to pick up a load of rice and got stranded in the mud. Her crew is waiting for an extra high tide and should not have any great difficulty in pulling their boat off.

Captain Hugh Rodney, who is well known here, has finished his cruise through the Orient and is expected to be a passenger for Honolulu on either the Hongkong Maru or the Korea.

A notice to the stockholders of the Oloa Sugar Company states a meeting has been called for March 16.

### CAPT. RITCHIE IS A VERY SICK MAN

#### Commander Of The Loch Garve Unable To Leave Bed

The Loch Garve arrived in the harbor this afternoon at 2 o'clock and was anchored in the stream at the foot of Fort Street. Capt. Haglund, the Island superintendent, is still in command as Capt. Ritchie is so ill that he cannot leave his bed. This ship is in quarantine and will remain so till she has been fumigated, for which she will have to wait till the German steamer Solosan has left the quarantine dock. From the appearance of the Loch Garve one would never imagine that she had been aground at all. She looks to be in the very best of condition.

The Loch Garve was towed in by the Likelike, the Manning remaining to pick up some cables and anchors which she slipped while at work on the salvage of the stranded vessel. It is understood that the matter of salvage will be settled without going into the courts and that the owners of the Loch Garve are willing to pay handsomely for the assistance received.

The House spent the time this afternoon in Committee of the Whole, discussing the primary law.

BULLETIN ADS. PAY

**HOLLISTER DRUG CO.**  
ESTABLISHED 1879



### It's Not The Price

you pay for your Spring Suit that is of so much importance to you. The main trouble is getting one that pleases you, one that you know is absolutely right as to style and fit. These troubles disappear the moment you put on one of our suits. You don't have to have someone tell you it is becoming and that it fits you perfectly—you know it. No matter what price a man pays for a suit he is perfectly satisfied if he gets his money's worth.

### THE KASH CO., Limited,

TEL. MAIN 25.  
COR. FORT AND HOTEL STS.

Correct Clothes for Men  
MADE IN NEW YORK  
Alfred Benjamin & Co. NEW YORK

### The Ricky

A FINE SHOE

OXFORD, \$4.50—BALMORAL, \$5.00

One of Thompson's recent creations,

PATENT COLT BLUCHER,  
LATEST STYLE,  
LATEST LAST,  
VERY DRESSY,  
EASY FITTING.

### Manufacturers' Shoe Co., Ltd.,

1051 Fort Street Phone Main 282



MASONIC TEMPLE WEEKLY CALENDAR
MONDAY: Hawaiian - Stated.
TUESDAY:
WEDNESDAY:
THURSDAY:
FRIDAY:
SATURDAY:
Lei Aloha No. 2—Regular.

ARMONY LODGE, No. 8, I. O. O. F.
Meets every Monday evening at 7:30
I. O. O. F. Hall, Fort street.
E. H. HENDRY, Secretary.
C. A. SIMPSON, N. G.
All visiting brothers very cordially invited.

MYSTIC LODGE, No. 2, K. of P.
Meets every Tuesday evening at 7:30 o'clock in K. of P. Hall, King street. Visiting brothers cordially invited to attend.

OAHU LODGE, No. 1, K. of P.
Meets every Friday evening at 7:30 o'clock in K. of P. Hall, King street.

HONOLULU LODGE 618, S. P. O. E.
Honolulu Lodge No. 618, S. P. O. E. will meet in their hall on King near Fort street every Friday evening.

Wm. M'KINLEY LODGE No. 8, K. of P.
Meets every Saturday evening at 7:30 o'clock in K. of P. Hall, King street.

HAWAIIAN TRIBE No. 1, I. O. R. M.
Meets every second and fourth Friday of each month in I. O. O. F. Hall.

DAMIEN COUNCIL No. 563, Y. M. I.
Meets every second and fourth Wednesday of each month at San Antonio Hall.

Some Storekeepers
think the only way to increase profits is to increase gross sales. Some try to do it by cutting down running expenses.

Hawaiian Office Specialty Co.
TOURISTS
Call and inspect our complete line of CURIOS

WOMAN'S EXCHANGE
HOTEL NEAR FORT.
ICE
manufactured from pure distilled water.

OAHU ICE AND ELECTRIC CO., Kewalo. Telephone Blue 3151.
Phone MAIN 147 FOR THE
Honolulu Clothes
Cleaning Co.

Baby Carriages Go-Carts Folding Carts
Koffschlaeger Co., Limited,
King and Bethel Sts.

Beautiful Your House
Make your floors, your woodwork and your furniture harmonize by using Johnson's Wood Dyes, and then give them a rich gloss with Johnson's Prepared Wax.

Cramer Plates
Isochromatic and ordinary.
With a complete stock both of these plates and of our famous Hammer Plates, we are in a position to satisfy the individual taste of every one of our customers.

HONOLULU PHOTO SUPPLY CO.
FORT STREET
"Everything Photographic"

Milk That Is Handled From 5 to 20 Times
Before it reaches you, is subject to many kinds of contamination. Milk that is sealed in air-tight cans is secure against germs of bacteria of any sort.

Carnation Cream
Our Pacific Coast cows are well-fed and well-kept and consequently give rich, pure milk. We remove two-thirds of the water by evaporation, sterilize the milk and cream and immediately seal it in germ-proof, air-proof and dirt-proof cans.

LOCAL AND GENERAL
Parsons here cleaned the tables.
Crossed Outside committee for sale of all army bands.
Best cup of coffee in the city. New England Bakery
Avenue B. Cook will follow his brother-in-law to the United States next month.
Walter Weaver, a business man of San Francisco, is spending a month in the Islands.
These new carriage or automobile to Hawaiian Carriage Manuf. Co. for up-to-date repairs.
Have your house painted by Stanley Brown. He uses the kind of paint that will not warp.



Quality Quality Quality
has always been one of our chief aims. Lowering the price by lowering the quality, and substituting, is not our policy. The cut in quality is always greater than the cut in price, and the spectacle weaver is the loser. There's mental satisfaction for you in high quality of our goods.
A. N. SANFORD, GRADUATE OPTICIAN
BOSTON BUILDING, FORT STREET
Over May & Co.

IMITATION IS THE HIGHEST FORM OF FLATTERY—
THE OUTER FORM OF THE "H. C."
Hawaiian enameled souvenir jewelry has been copied by all other jewelers: the high standard of the workmanship has been attained by none.
Buy the Best
and thus get the greatest value for your money.
H. Culman, 1064 Fort St.
FINE HAWAIIAN CURIOS AND JEWELRY.

Three Castle Cigarettes
are imported from England in a circular tin case that keeps them fresh in any climate. Every one has the true CASTLE flavor, which is of real tobacco. Why not try them?
FITZPATRICK BROS.,
HOTEL AND FORT STREETS.
Bowling Tournament
FIVE VALUABLE PRIZES OFFERED FOR HIGHEST SCORES MADE FROM MARCH 1ST TO APRIL 1ST.
Hotel Baths Bowling Alleys

Additional Cable News on Page 1.
RUEF APPEALS TO HIGHEST COURT
San Francisco, March 7.—Albe Ruef has appealed to the Supreme Court of the United States.
PRESIDENT'S SON STILL SUFFERING
Washington, March 7.—Archibald Roosevelt, the President's son, is seriously ill of diphtheria.
PERKINS DISGORGES FIFTY THOUSAND
New York, March 7.—Ex-Vice President Perkins, of the New York Life Insurance Co., has refunded that corporation the \$50,000 contribution which he made to the Republican campaign fund in 1906.
THAW'S DEFENSE IS ALL SUBMITTED
New York, March 7.—The Thaw defense has concluded and Jerome will not request a commission in lunacy to examine the defendant.
GOVERNMENT AND HARRIMAN TO CO-OPERATE
New York, March 7.—E. H. Harriman has announced his readiness to cooperate with the government for a better understanding in regard to railroads.
HILL WILL NOT REBUILD
St. Paul, March 7.—J. J. Hill says he will not rebuild the lost steamer Dakota.
ADAMS JURY DISAGREES
Wallace, Idaho, March 7.—The Adams jury has disagreed.
Easter's Coming
Why not come out, then, in a stylish spring suit? We have a remarkably fine assortment of spring suitings for you to choose from. Jealous as we are of our reputation, you are sure to secure correct styles and a good fit.
W. W. Ahana & Co., MERCHANT TAILORS
62 King St. PHONE BLUE 2741. P. O. Box 989

THE Oriental Series
A Mine of Rich Knowledge about the history and art and literature of China and Japan is given you in these books by Capt. Brinkley. The books, leather and board bound, are handsomely illustrated.
Sold on easy pay'ts.
Wm. C. Lyon Co., Ltd, HOTEL STREET opp. UNION.
The Weekly Edition of the Evening Bulletin gives a complete summary of the news of the day.

Judiciary Committee.
Makela moved to pass the bill without the amendments. He objected to the recommendation that the person who had failed to register should appear before the Board of Registration, as it would be very inconvenient on Hawaii.
Coelho said that the passage of the bill as proposed by the committee would make the hardships suffered in the past still worse. The only way to remedy the present defects was to pass the law in its original form. Coelho said that the amendment made by Makela also applied to Maui, Molokai and Lanai.
Howitt also fought the committee's amendments.
Chillingworth said that he would agree with the members from the outside districts, but they had evidently ignored the fact that affidavits could be sent to the Board of Registration, which would cover the matter. In Honolulu the election inspectors were too busy to waste time in registering voters. The committee's recommendation was a fair one and the only just one.
Chillingworth said that under the Organic Act the last day of registration should be October 10. Therefore both bill and amendment were unconstitutional.
That rather flabbergasted the Senate and Howitt's motion to defer action until tomorrow was carried with alacrity. Smith, however, soon moved to reconsider the vote. This was done, and Howitt moved to refer the bill back to the committee to report on March 22. Carried.
Senate Bill 49, establishing the rights and liabilities of innkeepers in respect to their guests' baggage, was referred to the Miscellaneous Committee.
A recess was taken until 2 p. m.

Judge Robinson excused the jury in his court until Monday on account of the illness of Counsel Gear, who has most of the cases on the calendar.

SOZODONT Tooth Powder
is of proven value. Sixty years is a pretty good test. No acid, no grit. Ask your dentist.

NOTICE TO STOCKHOLDERS.
Olaa Sugar Co., Ltd.
The annual meeting of the stockholders of the Olaa Sugar Company, Limited, has been called by the directors for Saturday, March 16, A. D. 1907, and will be held at the rooms of the Chamber of Commerce, third floor Stangenwald Building, in Honolulu, at 10 o'clock a. m. on that date.

ELECTION OF OFFICERS.
Sugar Factors Co., Ltd.
At the annual meeting of the stockholders of the Sugar Factors Co., Ltd., held in Honolulu on Monday, March 4, 1907, the following Directors were elected to serve for the ensuing year:
S. M. Cooke, F. A. Schaefer, S. M. Damon, J. P. Cooke, W. F. Pfotenhauer, E. D. Tenney, F. M. Swanzy.
Auditor
At a meeting of the Board of Directors of the Company held on the same date, the following officers were elected to serve for the same period:
C. F. Cooke, President
F. A. Schaefer, 1st Vice President
S. M. Damon, 2nd Vice President
E. F. Bishop, Treasurer
E. E. Paxton, Secty. & Manager

HONOLULU WEATHER
March 8.
Temperatures—6 a. m., 68; 8 a. m., 72; 10 a. m., 76; noon, 76; morning minimum, 67.
Barometer, 8 a. m., 29.88; absolute humidity, 8 a. m., 7.317 grains per cubic foot; relative humidity, 8 a. m., 86 per cent; dew point, 8 a. m., 68.
Wind—6 a. m., velocity 4, direction N. E.; 8 a. m., velocity 2, direction N. E.; 10 a. m., velocity 9, direction W.; noon, velocity 8, direction S. W.
Rainfall during 24 hours ended 8 a. m., .25 inch.
Total wind movement during 24 hours ended at noon, 122 miles.
W. M. B. STOCKMAN, Section Director, U. S. Weather Bureau.

SHIPPING INTELLIGENCE
ARRIVED.
Friday, March 8.
S. S. Doric, Gankroger, from Orient, 1 1/2 p. m.
S. S. Aorangi, Phillips, from Columbia, 1 1/2 p. m.
Ger. S. S. Tolson, Johnson, in distress, 12 15 a. m.
Br. Kikiha, Culler, from Puget Sound, off Diamond Head at 11 a. m.
Sp. Loch Garve, from Kamala, in tow of atur. Lakelike, 1 1/2 p. m.

DEPARTED.
Friday, March 8.
U. S. A. T. Sherman, Bruger, for San Francisco, 11 a. m.
A. H. S. S. Alaskan, Nichols, for Kahului, 5 a. m.

SAILING TODAY.
S. S. Aorangi, Phillips, for Victoria and Vancouver, 9 p. m.
Star. Claudine, Parker, for Maui and Hawaii ports, 5 p. m.
S. S. Doric, Gankroger, for San Francisco, 10 p. m.

SAILING TOMORROW.
M. N. S. S. Hawaiian, Johnson, for Hilo and San Francisco.

DUKE TOMORROW.
Star. Kihau, Freeman, from Hilo only way ports, in forenoon.
PASSENGERS
Arrived
Per U. S. A. T. Sherman, from Manila and Nagasaki through for San Francisco.—J. L. Hayden, Capt. Arts. Corps; E. F. McLaughlin, Capt. Arts. Corps; R. H. Van Deeman, Capt. Gen. Staff; F. A. Cooke, Capt. Sub. Dept.; E. P. Rockhill, Capt. Med. Dept.; W. M. Parker, Capt. 24th Inf.; A. E. Waldron, Capt. Engr. Corps; C. N. Purdy, Ret'd. Capt. 1st Inf.; O. Latrobe, 1st Lt. 8th Cavy.; W. S. Mages, 1st Lt. 8th Inf.; F. E. Sidman, 1st Lt. 2nd Cavy.; W. G. Motlow, 2nd Lt. 1st Inf.; A. W. Barry, 2nd Lt. Phil. Sec.; D. D. Brown, Con. Surg.; G. J. Ganecek, Con. D. Surg.; S. M. Long, Con. Surg.; F. B. Edwards, 1st Lt. 4th Cavy.; L. W. Moseley, 2nd Lt. 2nd Inf.; A. R. Miller, Con. Surg.; N. M. Smith, Mid. Ship'n. U. S. Navy; H. H. Richards, Boat'n. U. S. Navy; M. A. Appelman, C. H. Larabee, W. Stratton, Roy G. Soudley, J. P. Malone, Mrs. J. Canby and infant, Mrs. Cunningham, Mrs. H. C. Dady and infant, Mrs. M. A. Elliott, Mrs. C. G. W. Foose, Miss A. Gardner, Mrs. J. L. Hayden, 2 children and nurse, Miss Alice Hiller, Mrs. O. Latrobe and 3 children, Mrs. A. L. Miller and infant, Mrs. L. W. Moseley, Mrs. W. S. Mages and son, Mrs. W. K. Naylor and infant, Mrs. W. M. Parker, Mrs. E. P. Rockhill, Mrs. R. H. Van Deeman, Mrs. G. W. Van Deusen, Mrs. M. G. Vannan, Mrs. Whitman and 2 daughters, Mrs. E. S. Wolfe, Mrs. Appelman and 2 infants, L. M. Lang and wife, Mrs. H. H. Richards and infant, Mrs. M. Bordner, Mrs. C. M. Cotterman and daughter, P. A. Clements and Mrs. R. Fox, W. H. Hills, wife and 3 children, Mrs. C. L. McCaskey and wife, F. R. Millos and wife, F. A. McCallan and mother, Mrs. W. T. Nolting, Mrs. P. C. H. Parker and son, Mrs. M. L. Platt, W. W. Pettit, Miss M. H. Smith, Mrs. M. C. Walker, Miss Anne Orr, F. M. Price and wife, Miss B. Purcell, Annie M. Shea, 21 second class passengers and 177 steerage.

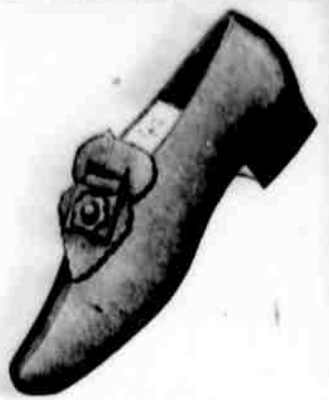
Per S. S. Doric.—For Honolulu, E. R. Shine. For San Francisco: A. A. Alfred, W. M. Page, F. A. H. Anker, A. W. Walter.
Per C.-A. S. S. Aorangi.—For Honolulu: E. Kelly, Mrs. H. M. Wicks, Miss W. Wicks, Bruce Mackay.

Per C. A. S. S. Aorangi, to Vancouver and Victoria, Mar. 8.—Mr. and Mrs. F. L. Waldron, W. A. B. Lindsay, James L. Cockburn, Mr. and Mrs. H. C. Mohr, Mrs. Fannie Loos, James H. Loos, Miss Mary L. Stroud, Mrs. R. Swinton, C. H. Ziegler, S. Matsumoto, Dr. Pollard and wife, Miss G. A. Jones, Mr. and Mrs. J. B. Johnson, H. Erickson, C. H. Sweetser and wife, B. C. Hill, Mr. and Mrs. J. W. Glover, Supt. Lehigh, H. F. Wichman, G. A. Wright, L. J. Trotman, W. H. Harrison, C. H. Clapp, F. H. Kennedy, Mr. and Mrs. J. E. Miller, H. J. Wood, Mrs. D. W. Durant, S. S. Ripley, J. McLean, J. R. Galt.



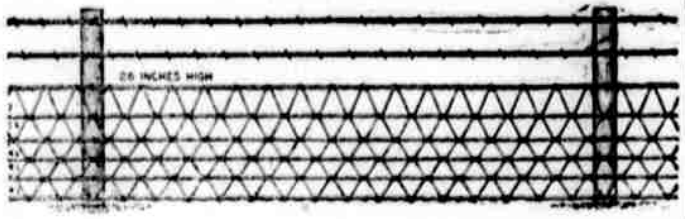


\$1.50



Old Ladies' Comfort; Light Black Serge; Elastic Vamp

McInerney Shoe Store



The HAWAIIAN COILED SPRING FENCE, one of the hundred styles made by the Duplex Automatic Ball-Bearing Wire Fence Machine. Sold by

J. C. AXTELL & CO.,

1048-50 ALAKEA ST. HONOLULU, T. H. PHONE BLUE 1801. P. O. BOX 642.

Fine Nickel Goods

To Finish off the Bathroom or Household Requirements: SERVING TRAYS; SPONGE and SOAP HOLDERS; TOILET PAPER HOLDERS; SOAP DISHES; BON BON TRAYS; CALL BELLS; JULEP STRAINERS; SYRUP JUGS; COCKTAIL SHAKERS; TEA and COFFEE POTS; WATER PITCHERS; CHAFING DISHES; TOWEL RACKS and BARS; TOOTH BRUSH RACKS.

Lewis & Co., Ltd., HOUSEHOLD EMPORIUM, 169 King St. Phone Main 240

Just In

The Alameda brought us a complete assortment of good things including Poultry. May we have your orders?

Metropolitan Meat Co. Limited.

MAIN 71



That's the number to ring up, if you want soda water that is PURE AND WHOLESOME. Try our KOLA MINT, PEACH MELLOW and GINGER ALE—the purest goods manufactured in town.

Consolidated Soda Water Works Co Telephone Main 71 G. S. LEITHEAD MANAGER

Monuments, Safes, Iron Fence

Hawaiian Iron Fence and Monument Works NEXT TO YOUNG BLDG., 176-180 KING STREET. PHONE 287.

HOUSE CONSIDERS

(Continued from Page 1) under the 1905 appropriation bill, and recommended the insertion of the item. The Lands Committee reported on Kanoho's bill to appropriate \$5,000 to repair the roads in Hawaii which were destroyed by the lava flow. The committee stated that it had received an opinion from the Attorney General showing that the matter came properly under the County, and it therefore turned down the bill. Kanoho proceeded to violently jump on the committee. He was answered by Rawlins, one of the members of the committee, who stated that Kanoho was evidently laboring under the impression that everyone was down on him. The committee had spent much time on the bill and given it mature deliberation before turning it down. Kalelopa said that Kanoho had insinuated that members of the committee had done politics in the matter. This he denied was the case. Kanoho Makes Charges The report of the Public Lands Committee on Kanoho's resolution to appropriate \$5,000 for the opening up of the road which was closed by the volcanic eruption caused an exchange of compliments between Kanoho and Rawlins. The committee recommended that the resolution be tabled. Rawlins said the action of the committee had been taken on advice of the Attorney General. Kanoho intimated pretty strongly that the committee wanted the resolution tabled because his name was attached to it. The committee always opposes all my bills, he said. Rawlins informed Kanoho that if he thought there was any politics in the action of the committee he was badly mistaken. Mahoe broke away from Kanoho, with whom he usually sides, and supported the motion to table. Rice took Kanoho's part. "It is strange," he said, "that the Territory can't appropriate money for repair of damage caused by a public calamity like this. If the big Nuuanu dam should break some day and wash away half the streets of Honolulu, would the Territory not appropriate money to help the city? Rice asked Kanoho whether Hawaii had any money stored up for such emergencies. Kanoho replied in the negative. Inefficient Management Rice said the vote should be on whether or not the Territory should appropriate money to help the Counties after the roads, etc., had been torn over to them. "It seems to

HONOLULU STOCK EXCHANGE

Table with columns: NAME OF STOCK, PAID UP, etc. Includes entries for Mercantile, Hawaiian Electric, and various sugar companies.

Sales—Between Boards: \$1000 Pioneer 68, \$109; \$500 Haku 68, \$102.75; \$500 Haku 68, \$102.75; 20 Pioneer, 133; 250 Oahu Sug. Co., \$24; 275 Oahu Sug. Co., \$24; 50 Waiuku, \$75; 90 Waiuku, \$75.

Latest sugar quotation, 3.51 cents or \$70.20 per ton.

LONDON BEETS, 9s 0 3-4d SUGAR, . . . . . 3.51

Henry Waterhouse Trust Co., Stock and Bond Department Members Honolulu Stock and Bond Exchange. WILLIAM WILLIAMSON, Manager, FORT AND MERCHANT STS. TEL. PRIVATE EXCHANGE 4.

LOCAL AND GENERAL

Tullyhos, ivory, auto, strays, RIDE. No fancy prices at the New England Bakery. A stable and carriage house is for rent. See ad this issue. Just in—fine assortment National Biscuit Co.'s crackers. Day & Co. W. H. Crawford has sold his interest in the firm of Wing Wo Chong to Kong Fook. A list of the officers elected to serve for the ensuing year in Castle & Cooke, Ltd., is published in this issue. Expert Hat Cleaners, Fort St., opp. Club Stables—best work in Panama—straw and felt hats. Work guaranteed. A cement floor is being laid throughout the brick warehouse on Queen street, and windows are being put in at either end in preparation for the new garage. The work is being done under the immediate supervision of President Isenberg.

COMMITTEES REPORT

The Committee on Education reported on House Resolution 68, appropriating money for a teacher's cottage at Hanalei, South Kona, recommending that it be tabled. Adopted. House Resolution 70, providing \$500 for a teacher's cottage at Hanalei, North Kona, was reported on by the Committee on Education, which recommended that it be tabled for consideration with the appropriation bill. A similar recommendation was made in regard to House Resolution 77, providing for a teacher's cottage at Hilo, Kau, and on Resolution 62, providing for teachers' cottages at Ala-e. The Miscellaneous Committee recommended that Resolution 116, appropriating \$4000 for buildings on Maui, be adopted. The same committee reported on Resolution 114, asking that the Judiciary Committee be requested to draft a law making county police officers also transient officers. The recommendation of the committee that the resolution be referred to the Judiciary Committee for the purpose named was adopted. PLAY BALL. A communication from Senator Chillingworth for the Senate was read, challenging the House to a game of baseball to be played at the baseball park on March 16, the proceeds, less expenses, to go to the Leper Settlement. To which the following reply was sent by the Speaker: Hon. Chas. Chillingworth: Dear Sir:—Your esteemed note of even date conveying challenge to play baseball March 16, 1907, is to hand. On the proper motion being made, the same was referred to the junior and chaplain, who will act as the House conferees on the subject. Yours respectfully, H. L. HOLSTEIN.

SECOND READING OF BILLS.

The following bills passed second reading and were referred to the proper committees: House Bill 87, making the attendance of school children obligatory. Referred to the Education Committee. House Bill 48, an Act to establish a law uniform with the laws of other States and Territories. Referred to Judiciary Committee. House Bill 86, to regulate and prescribe police and sanitary regulation. Referred to Judiciary Committee. House Bill 79, relating to the issuance of certificates of Hawaiian birth. House Bill 83, making additional appropriations for the third, fourth and fifth Circuit Courts, and the Court of Land Registration. Tabled. NEW BILLS. A resolution was introduced by Williams, appropriating money for roads on Hawaii. Referred to Lands Committee. Sheldon introduced a bill to authorize the election of road supervisors. The Committee of the Whole reported on Senate Bill 36, an Act making additional appropriations for the Departmental use of the Territory of Hawaii, recommending the passage of the bill with some amendments. ATTORNEY GENERAL'S WORK. Henry Smith, clerk of the Judiciary Department, sent a communication showing the amount of work done by the Attorney General's Department since January 1, 1905. The list showed that Peters has appeared in Judge DeBout's court in 12 cases, Prosser in 1; in Judge Lindsay's Court: Peters in 9 cases, Prosser in 1, Fleming in 2, Weaver in 5, Douthitt in 1; in Judge Robinson's court: Peters in 5 cases, Fleming in 1; in the Supreme Court: Peters 2, Milverton 2, Weaver 5, Fleming 2, Prosser 1, Douthitt 1. HOSPITAL FOR LEPEERS. The leprosy question came up again over the third reading of House Bill 34, the leprosy bill. The bill provides for a hospital for the treatment of leper suspects, in which they shall be confined until cured or pronounced incurable. The bill also prescribes penalties for the sending of lepers. It is provided that within six months a hospital shall be erected at the Kailih Receiving Station, where an attempt shall be made to cure those declared lepers, the attempt to continue for a year. Sheldon, Rawlins, Hughes and others all spoke on the bill. Sheldon said it ought by all means to pass. He did not think lepers ought to be treated as convicts, and they ought to be given every chance before being sent to Molokai to their doom. The bill carried by 26 yeas. LEPER SUSPECTS. House Bill 90, making it the duty of the police and physicians to report to the Board of Health any cases of suspected leprosy brought forth the opposition of Kanoho. He thought the wording of the bill gave too much latitude to the word "suspect" view. Leiwai took the same view. He thought it not right that a person having a sore or swelling of the hand should be taken into custody. As it stands today, he said, a person may be taken into custody as a suspect without any strong proof. If this bill passes, the act we have just passed, Bill 34, will be nullified and rendered inoperative. Hughes moved that the bill be indefinitely postponed. Carried unanimously.

Drinking Beer

is not an expensive luxury nor a diseased appetite. It is simply a healthy desire to repair the waste of the body. And this is accomplished every day by many men who drink the pure beer—

PRIMO

A Delicious "Sparkle"

IS GIVEN TO YOUR FOOD, OYSTERS, FISH, GAME, MEAT, AND ALL BY THE USE OF

Alvord's Old Virginia Corn Relish

This most piquant and original relish makes the "BEST MEAL BETTER."

J. M. Levy & Co., FAMILY GROCERS.

Phone Main 149.—King St next to Metropolitan Meat Co.

me," he said, "that the County of Hawaii has not been conducting its finances in the way it should, or it would have money saved for such emergencies. The County of Kauai had \$15,000 worth of damage done to its roads by the recent rains, but we had saved up money to repair them. God Responsible Moanani took a hand in the debate. He said the damage to the road had been caused by an act of God. He moved that the report of the committee be adopted. The previous question was moved and carried. Kanoho had to kick some more. He thought it strange that Mahoe was not a supporter of his bill. The Territory, he said, ought to give his County some aid in the matter. The County of Hawaii is in debt. Kanoho told how hungry the County of Hawaii is and said there is no one to fill its stomach but the Legislature. "A good deal of benefit was derived from the lava flow. Steamship loads of people came to Hawaii to see the flow. We gave them a good exhibition for their money, and now the Territory ought to help us out. "You all know the old County Supervisors left the county in debt, and when the new board came in they found no money in the treasury." A vote was taken on the motion to table the committee's report. The motion was lost by a vote of 17 to 10. A motion to adopt the report was

NATURE PROVIDES FOR SICK WOMEN



A more potent remedy in the roots and herbs of the field than was ever produced from drugs. In the good old-fashioned days of our grandmothers few drugs were used in medicines and Lydia E. Pinkham, of Lynn, Mass., in her study of roots and herbs and their power over disease discovered and gave to the women of the world a remedy for their peculiar ills more potent and efficacious than any combination of drugs.

Lydia E. Pinkham's Vegetable Compound

is an honest, tried and true remedy of unquestionable therapeutic value. During its record of more than thirty years, its long list of actual cures of those serious ills peculiar to women, entitles Lydia E. Pinkham's Vegetable Compound to the respect and confidence of every fair minded person and every thinking woman. When women are troubled with irregular or painful functions, weakness, displacements, ulceration or inflammation, backache, flatulency, general debility, indigestion or nervous prostration, they should remember there is one tried and true remedy, Lydia E. Pinkham's Vegetable Compound. No other remedy in the country has such a record of cures of female ills, and thousands of women residing in every part of the United States bear willing testimony to the wonderful virtue of Lydia E. Pinkham's Vegetable Compound and what it has done for them. Mrs. Pinkham invites all sick women to write her for advice. She has guided thousands to health. For twenty-five years she has been advising sick women free of charge. She is the daughter-in-law of Lydia E. Pinkham and as her assistant for years before her decease advised under her immediate direction. Address, Lynn, Mass.

A Rainier "Tip" To The Panama Commission



There's a lot of perturbation At the Isthmus excavation. Over work and sanitation, Till the 'tarnal Yankee nation Is in plenty piikika. If you'd stop the sad confusion, Bring the fuss to quick conclusion, To Mount Rainier, O Commission! Send for cargoes in condition, Of wholesome, foamy beer, Then here's to the Panama ditch! We'll dig it without further hitch.

Rainier Beer

"New Vigor and Strength in every drop."

C. A. Nelson, Agt. Phone Main 1331

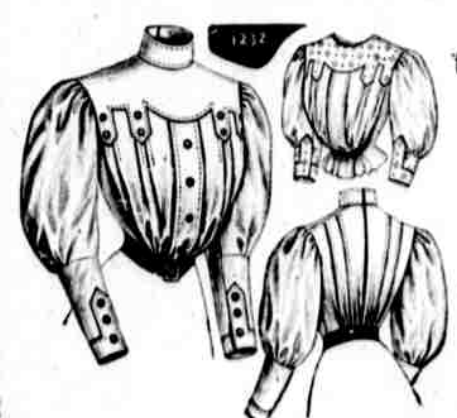
Honolulu's Leading Society Caterer Says:

"Your ice cream and confections always give satisfaction; my customers are well pleased when the refreshments for a social event come from the Palm." This proves our claim that our goods are the best made. They are pure and wholesome and never vary in quality.

The Palm,

116 HOTEL STREET PHONE MAIN 311

J. LANDO'S HAS A NEW LINE OF Collegian Clothes AND THE DEPOT FOR BOSS OF THE ROAD OVERALLS. Hotel Street Store



M'Call Patterns Are The Best

Curiosity often leads woman to experiment with new things, but don't try it with paper patterns. A garment spoiled exceeds the cost of a hundred patterns.

at E. W. Jordan & Co., Ltd.

Oceanic Steamship Company TIME TABLE

Table with columns for destination (FROM SAN FRANCISCO, FOR SAN FRANCISCO) and ship names (ALAMEDA, BUREHA, etc.) with dates.

In connection with the sailing of the above steamers, the agents are prepared to issue to intending passengers, coupon through tickets, by any road from San Francisco to all points in the United States, and from New York by any steamship line to all European ports.

Wm. G. Irwin & Co., Ltd OCEANIC S. S. CO., GENERAL AGENTS.

Pacific Mail Steamship Co. Occidental and Oriental Steamship Co., and Toyo Kisen Kaisha

Steamers of the above companies will call at Honolulu and leave this port on or about the dates below mentioned:

Table with columns for destination (FOR JAPAN AND CHINA, FOR SAN FRANCISCO) and ship names (CHINA, MONSIEUR, etc.) with dates.

H. Hackfeld & Co., Ltd, Agents

AMERICAN-HAWAIIAN S. S. CO

Direct Service between New York and Hawaiian Islands, Via Pacific

From New York to Honolulu Weekly sailings via Tehuantepec. Freight received at all times at the Company's Wharf, 41st Street, South Brooklyn.

Canadian-Australian Royal Mail Steamship Company.

Steamers of the above line, running in connection with the CANADIAN PACIFIC RAILWAY CO. between Vancouver, B. C., and Sydney, N. S. W., and calling at Victoria, B. C., Honolulu and Suva, Fiji, and Brisbane, are DUE AT HONOLULU on or about the dates below stated, viz:

Table with columns for destination (From Vancouver and Victoria, B. C., From Sydney and Brisbane, etc.) and ship names (MOWERA, AORANGI, etc.) with dates.

Through Tickets issued from Honolulu to Canada, United States and Europe. For Freight and Passage and all general information, apply to Theo. H. Davies & Co., Ltd. General Agents.

Hustace-Peck Co., Ltd. DRAYMEN, 63 QUEEN ST.

DEALERS IN Firewood, Stove and Steam Coal. ALSO WHITE AND BLACK SAND. TELEPHONE MAIN 295.

Oahu Railway Time Table.

For Waianae, Waialua, Kahuku and Way Stations—7:15 a. m., \*8:20 p. m. For Pearl City, Ewa Mill and Way Stations—7:30 a. m., \*9:15 a. m., \*11:05 a. m., \*2:15 p. m., \*3:20 p. m., \*5:15 p. m., 12:30 p. m., 11:00 p. m., \*8:15 p. m.

Fast Schooner CONCORD

Calling for K. PUNA, HONOIPU, KAILUA and HOOKENA. From Sorenson's Wharf. Apply on Board or to HAWAIIAN BALLASTING CO., Agt Telephone Main 396, Maunakea St., low King. P. O. Box 820.



Headquarters for Automobiles with a Splendidly Equipped Fireproof Garage. VON HAMM-YOUNG COMPANY, Ltd M. Phillips & Co. Wholesale Importers and Jobbers EUROPEAN AND AMERICAN DRY GOODS FORT and QUEEN STS

Bishop & Co. BANKERS.

Commercial and Travelers' Letters of Credit issued on the Bank of California and The London Joint Stock Bank, Ltd., London.

Correspondents for the American Express Company and Thos. Cook & Son. Interest allowed on term and Savings Bank Deposits.

Claus Spreckels, Wm. G. Irwin

Claus Spreckels & Co. BANKERS.

HONOLULU, : : : T. H. San Francisco Agents—The Nevada National Bank of San Francisco Draw Exchange on the Nevada National Bank of San Francisco. London—The Union of London and Smith's Bank, Ltd. New York—American Exchange National Bank. Chicago—Corn Exchange National Bank.

The First AMERICAN SAVINGS AND TRUST CO

OF HAWAII, LTD. SUBSCRIBED CAPITAL, \$200,000.00 PAID UP CAPITAL, \$100,000.00 President, Cecil Brown Vice President, M. P. Robinson Cashier, L. T. Peck

The Yokohama Specie Bank, Ltd

ESTABLISHED 1860. Capital Subscribed, Yen 24,000,000. Paid Up, Yen 11,000,000. Reserve Fund, Yen 13,700,000. HEAD OFFICE, YOKOHAMA.

REAL ESTATE FOR SALE.

5 Building lots in Manoa Valley, 1-2 acre each, \$1000 a lot. Beautiful site, bracing air, magnificent view.

SATO & OZAWA JAPANESE LABOR BUREAU

SUPPLIES PLANTATIONS, FAMILIES, SHIPPERS AND STORE KEEPERS. A Christian Japanese, first-class cook, desires position; good references. All kinds of contract work done at reasonable prices. Phone White 2576. River nr. Hotel St

William T. Paty CONTRACTOR AND BUILDER ALAKEA STREET.

Corporation Notices.

ELECTION OF OFFICERS. Oahu Railway & Land Company. Notice is hereby given that at the annual meeting of the stockholders of the Oahu Railway & Land Company held in Honolulu on Wednesday, February 27, 1907, the following Officers and Directors were elected to serve during the ensuing year, viz:

Alexander & Baldwin LIMITED. H. P. COOKE, Manager OFFICERS: T. H. PETERIE, President; J. B. Castle, 1st Vice President; W. M. Alexander, 2nd Vice Pres; T. Peck, 3rd Vice Pres; J. E. Paxton, Treasurer; E. E. Paxton, Secretary; V. O. Smith, Auditor.

SUGAR FACTORS, COMMISSION MERCHANTS and INSURANCE AGENTS. Agents for Hawaiian Commercial & Sugar Co., Haiku Sugar Company, Paia Plantation, Maui Agricultural Company, Kihai Plantation Company, Hawaiian Sugar Company, Kahuku Plantation Company, Manuwaia Ranch Company, etc.

Castle & Cooke, Ltd

Commission Merchants and Sugar Factor. AGENTS FOR: The Ewa Plantation Co., The Waialua Agricultural Co., The Kohala Sugar Co., The Waimea Sugar Mill Co., The Fulton Iron Works, St. Louis, The Waialua Water Co., Ltd., The Geo. F. Blake Steam Pumps, Weston's Centrifugals, The New England Life Insurance Co. of Boston, The Aetna Fire Ins. Co. of Hartford, Conn., National Fire Insurance Co. of Hartford, The American Steam Pump Co.

Wm. G. Irwin & Co., Ltd

WM. G. IRWIN, President and Mgr; JNO. D. SPRECKELS, 1st Vice Pres; W. M. GIFFARD, 2nd Vice Pres; H. M. WHITNEY, Treasurer; RICHARD IVERS, Secretary; W. F. WILSON, Auditor.

SUGAR FACTORS and COMMISSION AGENTS

Agents for Oceanic Steamship Co., San Francisco, Cal.; Western Sugar Refining Co., San Francisco, Cal.; Salwin Locomotive Works, Philadelphia, Pa.; Newall Universal Mill Co. (Manufacturers of National Cone Shredder), New York, N. Y.; Pacific Oil Transportation Co., San Francisco, Cal.

C. Brewer & Co., Ltd.

AGENTS FOR: Hawaiian Agricultural Co., Ooaka Sugar Plant Co., Or-mea Sugar Co., Honomu Sugar Co., Waikuku Sugar Co., Pepeekeo Sugar Co., The Planters Line of San Francisco Packets. LIST OF OFFICERS: C. M. Cooke, President; George Robertson, Vice President and Manager; E. F. Fishop, Treasurer and Secretary; F. W. Macfarlane, Auditor; P. C. Jones, C. M. Cooke and J. R. Galt, Directors.

FIRE INSURANCE THE B. F. DILLINGHAM CO LIMITED.

General Agent for Hawaii: Atlas Assurance Company of London New York Underwriters' Agency. Providence Washington Insurance Co 1th FLOOR, STANGENWALD BLDG. Office Phone Blue 1801. Residence Phone Blue 2232.

Corporation Notices.

ELECTION OF OFFICERS. Castle & Cooke, Ltd. At the Annual Meeting of the stockholders of Castle & Cooke, Ltd., held in Honolulu on Thursday, May 7, 1907, the following officers were elected to serve for the ensuing year:

ELECTION OF OFFICERS. Kailua Plantation Co., Ltd. At the adjourned annual meeting of the stockholders of the Kailua Plantation Co., Ltd., held at the office and principal place of business of the corporation, Stangenwald building, Honolulu, on Monday, Mar. 4, 1907, the following officers and directors were elected to serve for the ensuing year:

ELECTION OF OFFICERS. Kailua Plantation Co., Ltd. At the adjourned annual meeting of the stockholders of the Kailua Plantation Co., Ltd., held at the office and principal place of business of the corporation, Stangenwald building, Honolulu, on Monday, Mar. 4, 1907, the following officers and directors were elected to serve for the ensuing year:

ELECTION OF OFFICERS. Kailua Plantation Co., Ltd. At the adjourned annual meeting of the stockholders of the Kailua Plantation Co., Ltd., held at the office and principal place of business of the corporation, Stangenwald building, Honolulu, on Monday, Mar. 4, 1907, the following officers and directors were elected to serve for the ensuing year:

Castle & Cooke, Ltd

ELECTION OF OFFICERS. Pulehu Plantation Co., Ltd. At the adjourned annual meeting of the stockholders of the Pulehu Plantation Co., Ltd., held at the office and principal place of business of the corporation, Stangenwald building, Honolulu, on Monday, Mar. 4, 1907, the following officers and directors were elected to serve for the ensuing year:

Wm. G. Irwin & Co., Ltd

Alexander & Baldwin, Ltd. At the annual meeting of the stockholders of Alexander & Baldwin, Ltd., held at the office and principal place of business of the corporation, Stangenwald building, Honolulu, on Monday, Feb. 25, 1907, the following Directors were elected to serve for the ensuing year:

SUGAR FACTORS and COMMISSION AGENTS

Agents for Oceanic Steamship Co., San Francisco, Cal.; Western Sugar Refining Co., San Francisco, Cal.; Salwin Locomotive Works, Philadelphia, Pa.; Newall Universal Mill Co. (Manufacturers of National Cone Shredder), New York, N. Y.; Pacific Oil Transportation Co., San Francisco, Cal.

C. Brewer & Co., Ltd.

AGENTS FOR: Hawaiian Agricultural Co., Ooaka Sugar Plant Co., Or-mea Sugar Co., Honomu Sugar Co., Waikuku Sugar Co., Pepeekeo Sugar Co., The Planters Line of San Francisco Packets. LIST OF OFFICERS: C. M. Cooke, President; George Robertson, Vice President and Manager; E. F. Fishop, Treasurer and Secretary; F. W. Macfarlane, Auditor; P. C. Jones, C. M. Cooke and J. R. Galt, Directors.

FIRE INSURANCE THE B. F. DILLINGHAM CO LIMITED.

General Agent for Hawaii: Atlas Assurance Company of London New York Underwriters' Agency. Providence Washington Insurance Co 1th FLOOR, STANGENWALD BLDG. Office Phone Blue 1801. Residence Phone Blue 2232.

Corporation Notices.

ELECTION OF OFFICERS. Maui Agricultural Co. At the adjourned annual meeting of the Maui Agricultural Co. held at the office and principal place of business of the corporation, Stangenwald building, Honolulu, on Monday, Mar. 4, 1907, the following Board of Managers were elected to serve for the ensuing year:

ELECTION OF OFFICERS. Paia Plantation. At the adjourned meeting of the stockholders of the Paia Plantation held at the office and principal place of business of the corporation, Stangenwald building, Honolulu, on Monday, Mar. 4, 1907, the following Directors were elected to serve for the ensuing year:

ELECTION OF OFFICERS. Paia Plantation. At the adjourned meeting of the stockholders of the Paia Plantation held at the office and principal place of business of the corporation, Stangenwald building, Honolulu, on Monday, Mar. 4, 1907, the following Directors were elected to serve for the ensuing year:

ELECTION OF OFFICERS. Haiku Sugar Co. At the adjourned meeting of the stockholders of the Haiku Sugar Co. held at the office and principal place of business of the corporation, Stangenwald building, Honolulu, on Monday, Mar. 4, 1907, the following Directors were elected to serve for the ensuing year:

Castle & Cooke, Ltd

ELECTION OF OFFICERS. Kahuku Plantation Co. At the annual meeting of the stockholders of the Kahuku Plantation Co. held at the office and principal place of business of the corporation, Stangenwald building, Honolulu, on Tuesday, Feb. 26, 1907, the following Directors were elected to serve for the ensuing year:

Wm. G. Irwin & Co., Ltd

Alexander & Baldwin, Ltd. At the annual meeting of the stockholders of Alexander & Baldwin, Ltd., held at the office and principal place of business of the corporation, Stangenwald building, Honolulu, on Monday, Feb. 25, 1907, the following Directors were elected to serve for the ensuing year:

SUGAR FACTORS and COMMISSION AGENTS

Agents for Oceanic Steamship Co., San Francisco, Cal.; Western Sugar Refining Co., San Francisco, Cal.; Salwin Locomotive Works, Philadelphia, Pa.; Newall Universal Mill Co. (Manufacturers of National Cone Shredder), New York, N. Y.; Pacific Oil Transportation Co., San Francisco, Cal.

C. Brewer & Co., Ltd.

AGENTS FOR: Hawaiian Agricultural Co., Ooaka Sugar Plant Co., Or-mea Sugar Co., Honomu Sugar Co., Waikuku Sugar Co., Pepeekeo Sugar Co., The Planters Line of San Francisco Packets. LIST OF OFFICERS: C. M. Cooke, President; George Robertson, Vice President and Manager; E. F. Fishop, Treasurer and Secretary; F. W. Macfarlane, Auditor; P. C. Jones, C. M. Cooke and J. R. Galt, Directors.

FIRE INSURANCE THE B. F. DILLINGHAM CO LIMITED.

General Agent for Hawaii: Atlas Assurance Company of London New York Underwriters' Agency. Providence Washington Insurance Co 1th FLOOR, STANGENWALD BLDG. Office Phone Blue 1801. Residence Phone Blue 2232.

Corporation Notices.

ELECTION OF OFFICERS. PAHANG RUBBER CO., LTD. At the annual meeting of the stockholders of the Pahang Rubber Co., Ltd., held at the office of the Waterhouse Co., Honolulu, Feb. 21, 1907, the following Directors were elected to serve for the following year:

ELECTION OF OFFICERS. The Waimea Sugar Mill Co. At the Annual Meeting of the Shareholders of THE WAIMEA SUGAR MILL CO., held in Honolulu on Thursday, Feb. 28, 1907, the following Officers and Directors were elected to serve for the ensuing year:

ELECTION OF OFFICERS. Apokaa Sugar Co., Ltd. At the Annual Meeting of the Shareholders of the APOKAA SUGAR CO., LTD., held in Honolulu on Wednesday, Feb. 27, 1907, the following officers were elected to serve for the ensuing year:

ELECTION OF OFFICERS. Ewa Plantation Company. At the Annual Meeting of the Shareholders of the EWA PLANTATION COMPANY, held in Honolulu on Wednesday, Feb. 27, 1907, the following Directors were elected to serve for the ensuing year:

Wm. G. Irwin & Co., Ltd

ELECTION OF OFFICERS. Waialua Agricultural Co., Ltd. At the Annual Meeting of the Shareholders of the WAIALUA AGRICULTURAL CO., LTD., held in Honolulu on Thursday, Feb. 28, 1907, the following Directors were elected to serve for the ensuing year:

Wm. G. Irwin & Co., Ltd

Alexander & Baldwin, Ltd. At the annual meeting of the stockholders of Alexander & Baldwin, Ltd., held at the office and principal place of business of the corporation, Stangenwald building, Honolulu, on Monday, Feb. 25, 1907, the following Directors were elected to serve for the ensuing year:

SUGAR FACTORS and COMMISSION AGENTS

Agents for Oceanic Steamship Co., San Francisco, Cal.; Western Sugar Refining Co., San Francisco, Cal.; Salwin Locomotive Works, Philadelphia, Pa.; Newall Universal Mill Co. (Manufacturers of National Cone Shredder), New York, N. Y.; Pacific Oil Transportation Co., San Francisco, Cal.

C. Brewer & Co., Ltd.

AGENTS FOR: Hawaiian Agricultural Co., Ooaka Sugar Plant Co., Or-mea Sugar Co., Honomu Sugar Co., Waikuku Sugar Co., Pepeekeo Sugar Co., The Planters Line of San Francisco Packets. LIST OF OFFICERS: C. M. Cooke, President; George Robertson, Vice President and Manager; E. F. Fishop, Treasurer and Secretary; F. W. Macfarlane, Auditor; P. C. Jones, C. M. Cooke and J. R. Galt, Directors.

FIRE INSURANCE THE B. F. DILLINGHAM CO LIMITED.

General Agent for Hawaii: Atlas Assurance Company of London New York Underwriters' Agency. Providence Washington Insurance Co 1th FLOOR, STANGENWALD BLDG. Office Phone Blue 1801. Residence Phone Blue 2232.



