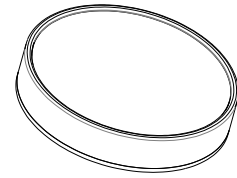


CIRCULUX



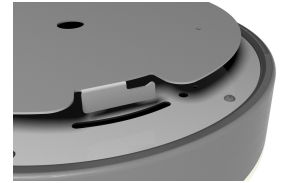
A new innovative LED lighting fixture for flat panel application has made its first step to bring the unique design to life. Cutting edge, laser-cut engineered clear lenses with diffusers deliver natural light from the source while creating a floating look when installed.

Specification	Description		
Lamp Type	Direct Lit		
Color Temperature (CCT: K)	3,000K	3,500K	4,000K
Lumen output	12" round 1,800lm, 18" round 3,000lm, 24" round 5,000lm		
Efficiency (lm/w)	110lm/W		
Color Consistency	Proprietary binning for uniform color		
Lumen Maintenance (L70)	50,000 hours		
Power Factor	0.9 ↑		
Input Voltage	100-277VAC, 50/60 Hz		
Power Consumption	12" round 16W, 18" round 28W, 24" round 45W		
Dimming control	0~10V dimming, DALI		
CRI (Ra.)	85 (Typ.), 90 (Optional)		
Fixture Size	12" round, 18" round, 24" round		
Weight	12" round 7.5lbs, 18" round 17.5lbs, 24" round 21.5lbs		
Optics	Light Refraction / Acrylic Diffusion		
Beam Angle	120°		
Application	Pendant, Gyp board recessed/surface mounted installation		
Operating Temperature	-4F ~122F		
Humidity	20% - 85% RH, Non condensing		
Certification	ETL Certificate		
Material Usage	RoHS compliant, No mercury		
Environment	Dry location, Indoor Use		
LED Class	L70 rated to 50,000 hours		

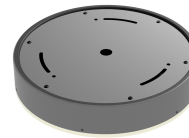
GYP. BOARD SURFACE MTG' BRACKET



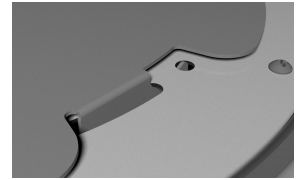
MOUNTING BRACKET



STEP 1



CIRCULUX LIGHT FIXTURE

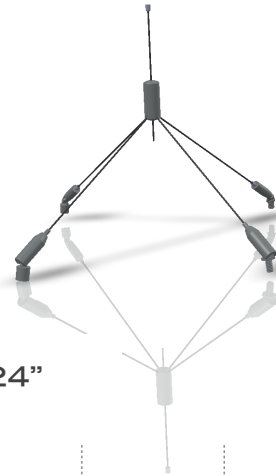
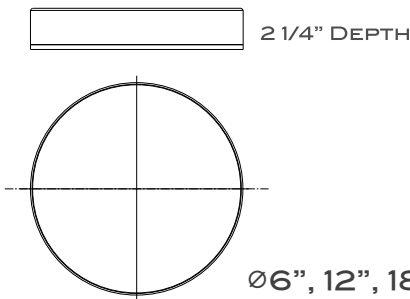


STEP 2

PENDANT INSTALLATION

Cordless suspension system / A clean, floating modern look
Class 2 LED lighting fixture - 100W, max. 60VDC,

DIMENSION



Rincon's powered suspension systems both power and suspend Class 2 LED lighting fixtures with a thin cable, providing a clean, modern and elegant look without the need for a separate power cord.

Height adjustable
Standard 48", 120", 180" OR custom length
1/16" Cable 40lbs
3/32" Cable 100lbs



CATALOG NO.

C								K			
A	B	C	D	E	F	G	H	I	J	K	
Model	Dimension	Optic	Wattage	Color	CRI	Finish		Dimming			
C = CircuLux	6R = 6" Diameter 12R = 12" Diameter 18R = 18" Diameter 24R = 24" Diameter	D = Direct-Lit	8 = 8 Watt 16 = 16Watt 28 = 28Watt 40 = 40Watt	30 = 3000 35 = 3500 40 = 4000 C = Custom	H = >90 M = >85	ACAR = AL Color Anodizing Red ACAB = AL Color Anodizing Blue ACAG = AL Color Anodizing Gold ACABK = AL Color Anodizing Black ACAC = AL Color Anodizing Custom		A=0~10v			
I Driver				J Emergency			K Installation				
RP5 = Remote PSU, 5Ft RP10 = Remote PSU, 10Ft RP15 = Remote PSU, 15Ft				EM = Philips BSL 17C, 90 min.			RSS = Rincon suspension system SMK = Gyp. Board Surface Mounting Kit				