

# DECINA

DISCOVER INDULGENCE

## ELINEA LUXE COUNTER TOP BASIN INSTALLATION & OWNER GUIDE

Thank you for purchasing a Decina ELINEA LUXE Counter Top Basin. Manufactured from premium vitreous China & finished with a protective Nano Glaze coating, this sparkling white basin is the perfect addition to any bathroom.

This manual provides the correct steps & care advice for a safe & long lasting installation.



**THIS PRODUCT MUST BE INSTALLED BY A QUALIFIED TRADESMAN**



- ❶ Unpack & check the item is correct & not damaged.
- ❷ If there are any visible defects do not proceed with the installation & contact the place of purchase immediately. **CLAIMS FOR DAMAGE WILL NOT BE ACCEPTED AFTER INSTALLATION.**
- ❸ Ensure you have access to all plumbing & drain fittings, door clearance & other obstructions.
- ❹ We recommend having your selected basin tap ware with you during the basin installation, to ensure adequate space is allocated for the overall installation of the basin & taps.

**PLEASE LEAVE THIS MANUAL WITH THE END USER**

## ADDITIONAL TOOLS REQUIRED FOR INSTALLATION

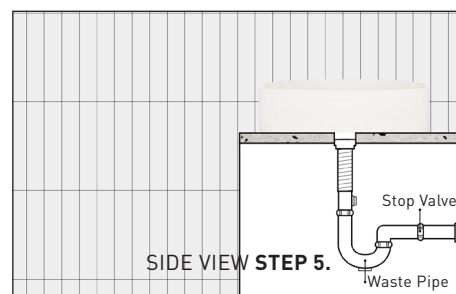
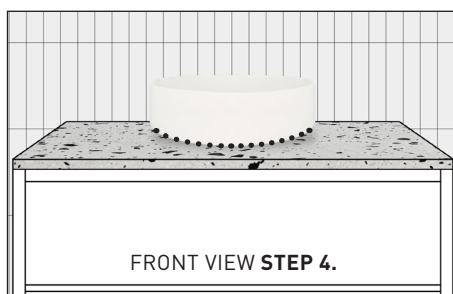
ENSURE YOU HAVE ALL TOOLS & ADDITIONAL PARTS REQUIRED FOR THE COMPLETE INSTALLATION OF YOUR BASIN BEFORE COMMENCING.

- 100mm Hole saw
- Pencil
- Tape measure
- Your basin tap ware
- Adjustable Wrench
- Level
- Silicone Gun
- Drill
- Warm soapy water and a soft cloth for cleaning

## INSTALLATION STEPS

### PLEASE NOTE

- IF USING WALL MOUNTED TAP WARE, CONSIDER THE LENGTH OF THE OUTLET TO THE BASIN ON THE BENCH TOP
  - IF THE TAP WARE IS BENCH MOUNTED, ALLOW SUFFICIENT WIDTH ON THE BENCH TOP FOR FITTING THE TAP WARE
1. Prior to installation remove the basin from the box and inspect for any transport damage or visible defects.
  2. Use the basin as a guide to line up the position of the basin on the bench top. Mark the centre point of the waste hole. Mark the position of the tap ware at this point too, to ensure;
    - THERE IS ADEQUATE SPACE BEHIND THE BASIN & TAP WARE
    - THE BASIN FITS ON THE BENCH TOP & DOESN'T HANG OVER THE FRONT
  3. Re-check the final position of your basin. Ensure there are no obstacles below the bench top which might impact the cutting of this hole. Use the 100mm hole saw to drill a hole for the waste to sit in.
  4. Place the basin in position, ensuring it is level & fix it into place in the bench top using a bead of silicone right the way around the basin base (allow the silicone to set for a minimum of 24 hours). Be sure to clean any excess silicone from around the basin base and bench top.
  5. Under the bench top connect the basin to the plumbing. Connect the plug and waste to the waste pipe using an approved waste trap.
  6. Install and connect your tap ware as per its separate installation instructions.
  7. Ensure there are no leaks and the water drains fully and correctly from the basin.



## CARING FOR YOUR BASIN

Decina uses premium vitreous china, finished with a protective Nano Glaze coating which is resistant to most things it may come into contact with. However naked flames, cigarettes or strong chemicals should be avoided and removed immediately. To preserve the white, high gloss surface Decina recommends the following:

- CLEAN USING A SOFT MOIST CLOTH, WARM SOAPY WATER & MILD LIQUID DETERGENTS ONLY
- DO NOT USE STRONG BLEACHING AGENTS, POWDERS, PASTES, CREAMS, CHEMICALS, WINDOW CLEANING SPRAYS, ABRASIVE CLEANERS & ABRASIVE/HARD CLOTHES
- IN CASE ACID LIQUIDS PENETRATE ON THE SURFACE REMOVE THEM IMMEDIATELY WITH A SOFT CLOTH

## WARRANTY TERMS & CONDITIONS

All Decina products are manufactured to the highest standards and guaranteed to be free of defects, subject to T&C's. In addition to the statutory rights given under Australian Consumer Law, Decina offers the following extended warranty periods from the date of purchase or handover:

PRODUCT	WARRANTY	TERMS
ELINEA LUXE Counter Top Basin - Premium Vitreous China	10 YEARS	Replacement Products or Parts

To view Decina's full warranty & returns policies or to make a warranty claim, please visit the Decina website [decina.com.au/warranty-claim/](https://decina.com.au/warranty-claim/)

**DECINA**  
DISCOVER INDULGENCE

**DECINA.COM.AU** 1300 DECINA   

All dimensions are nominal & subject to manufacturing tolerances & may vary +/-5mm, therefore we strongly recommend installation does not occur until after delivery. Decina reserves the right to modify or change models without notice. For further information and for warranty T&C's, please visit [decina.com.au](https://decina.com.au) or call 1300 332 462.

Copyright Oct 2019. Decina Bathroomware Pty Ltd. ABN 39845 084 033