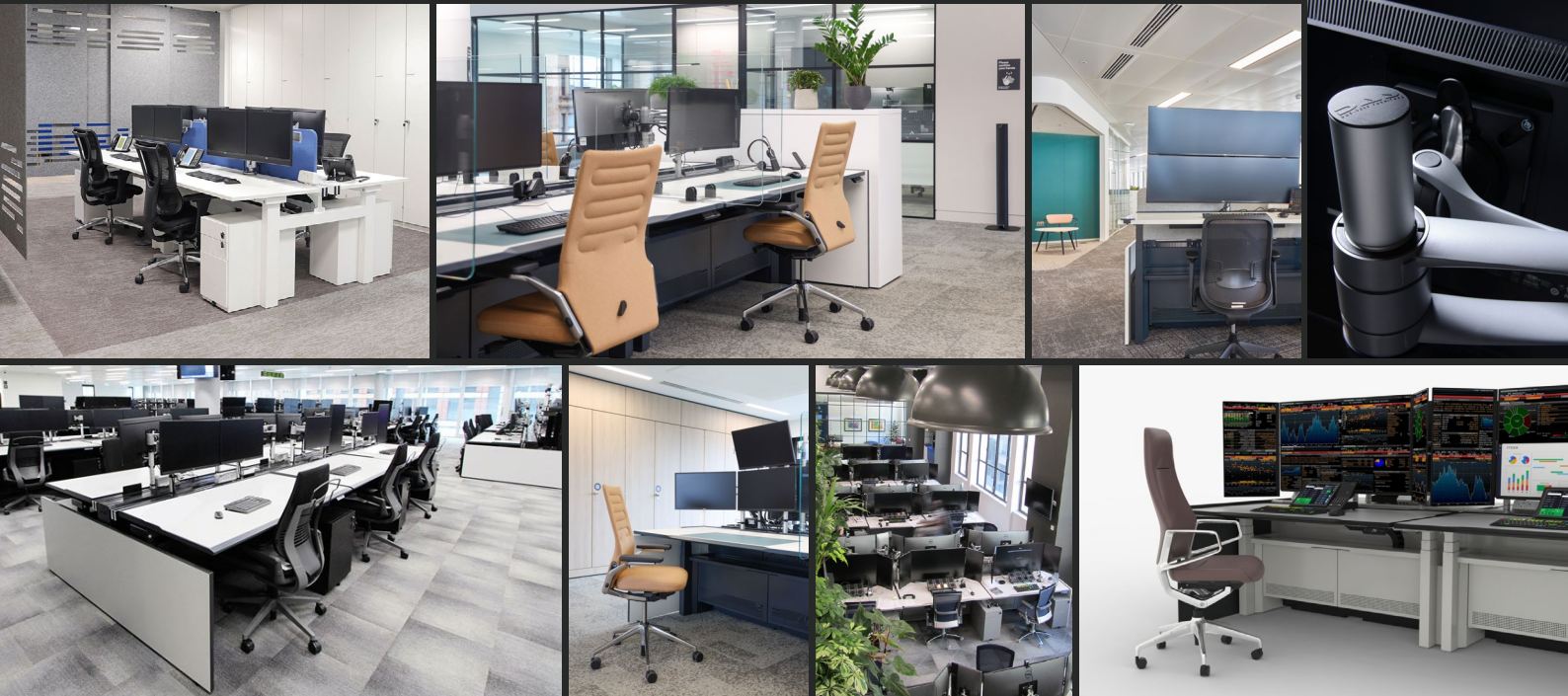


TRADING AND FINANCIAL



FROM

DAS

TRADINGANDFINANCIAL 

*"The ultimate connection of people and technology
through ergonomic furniture."*

- DAS



DAS HERITAGE

DAS have been working within the trading room and wider office interiors market since the mid-1980's. The workplace today is almost unrecognisable from the early days of space-hungry corner workstations and oversized desktop monitors in all areas of the office.

However, it's not just the equipment that has evolved; attitudes towards productivity, creativity and the overall well-being of employees has come on leaps and bounds during this time. DAS have worked continuously to adapt and overcome the technological and social issues that come with this new, agile way of working.

After over more than 35 years of successfully delivering complex and "tech-heavy" trading projects, both in the UK and worldwide, we have not ignored how the office environment evolved in recent years, particularly, since March 2020, and what it means to "Return to work" in 2021.

This document, and our accompanying Agile Working overview, demonstrates DAS' ability to provide a total interior solution, not just in the trading room and open-plan desking environment, but across all aspects of the modern office where softer, more agile furniture is now recognised as the norm.



Mid 1980's

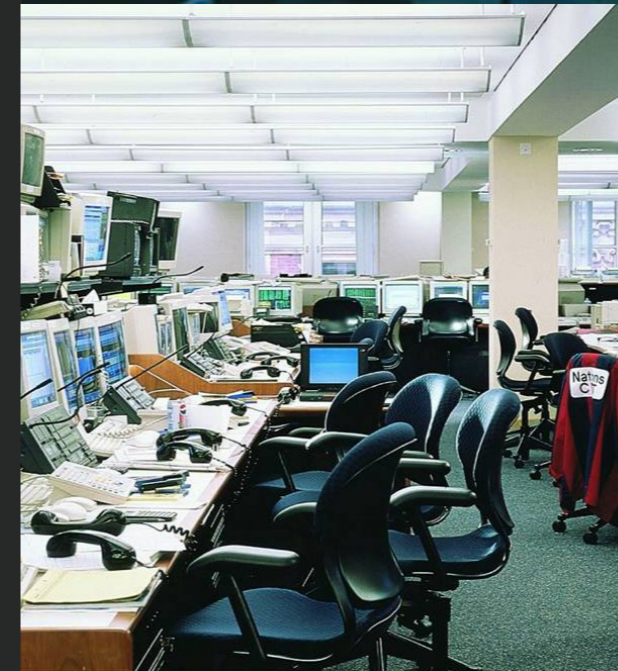
DAS enters the trading desk market the year after the 'Big Bang' and deregulation of the UK Stock Market.

Design & manufacture of wood-based trading desks

DAS Linear Trading Desk begins.

Dealer boards, with multiple handsets, were often recessed into the desk work surface.

Key customers include: Cantor Fitzgerald; EBRD; Midland Bank



1990's

DAS introduce 'Multi-task', a fixed-height modular trading desk with metal chassis, sliding quick release work surface & management rail to support the introduction of flat screen technology.

Desk depth decreases to 1000mm due to reduced depth of thinner flat screens.

Key customers: Commerz Bank; Kleinwort Benson;



2000-2002

First iteration of the OPTIMA fixed height trading desk system was introduced, shortly followed in 2002 by OPTIMA o2, the world's first gas-lift height-adjustable modular trading desk.

Key customers include: ABN Amro in Sydney, Australia.



1999

DAS collaborate with designers Colebrook Bosson Saunders to develop revolutionary future 'Design Classic' product 'Wishbone', the world's first monitor post & arm system designed for use with thinner 'flat' screens, first used on a new project for Citibank in London.



2005-2007

OPTIMA o5 with 'classic' bolt-on twin beam management rail introduced.

Key customers include: Standard Chartered Bank; State Street; Lehman Brothers; Merrill Lynch; Dresdner Kleinwort Wasserstein



2008-11

OPTIMA o8 electrically height-adjustable trading desk is introduced

Key customers include: Citigroup; Nomura; Investec; Royal Bank of Canada; Standard Chartered Bank



2012-18

OPTIMA o12 is introduced to fully comply with EN 527-1 latest ergonomic standard for sit-stand desks

Fully integrated 'combined' top frame with management rail is introduced.

Key customers include: Double Negative; Bank of America Merrill Lynch; JP Morgan Chase; PIMCO; Lloyds of London; Royal Bank of Scotland



2018-Present

OPTIMA 'Mk2' introduced with modular, interchangeable technology enclosures.

New style ergonomic PU-edged work surfaces

Key Customers: Royal Bank of Canada; HSBC



THE EVOLUTION OF THE TRADING FLOOR

Trading floors have always been at the forefront of technological change in the workplace. DAS have continually updated and improved their trading desk range to meet evolving technology requirements.

Many IT teams still look to the reliability and security of using multiple CPUs housed within the trading desk, while others have begun to adopt server-based processing systems using smaller 'blade' hardware. Screen configurations are also changing, with more users favouring fewer, larger screens.

DAS provides exceptional workstations, with various levels of technology, power and data-handling capabilities to meet the requirements of each client we work with.



OPTIMA T4

OPTIMA T4 is far and away our most widely used trading desk system, capable of accommodating up to 6 CPUs and supporting up to 12 screens. Ergonomic doors provide a capacious CPU enclosure, within which trolleys are included to make the removal of technology as straightforward as possible. T4 has been used on hundreds of trading floors across the world, for good reason.



OPTIMA T3 / T2 / T1

OPTIMA T3 (image top right)

A lighter aesthetic is created by using side-opening doors and technology enclosures that are raised further from the floor. The OPTIMA T3 system has the capability to house 4 mid-sized CPU's in a horizontal orientation, with all of the same smart cable management features as T4.

OPTIMA T2 (image below)

Designed with the 'thin-client' user in mind, OPTIMA T2 features a sleek front-opening enclosure with interchangeable shelves to support lighter technology, without compromising the robustness of the trading desk.

OPTIMA T1 (image bottom right)

T1 is the most 'stripped down' product in the OPTIMA range, and is best suited to thin-client and server-based technology, while still allowing a CPU to be supported from a leg riser or placed on a visible trolley.



OPTIMA ASCEND

Traditionally, CPUs and other bulky technology items have been accommodated at low-level within a trading desk, and concealed behind doors on trolleys or shelves, while providing straightforward accessibility for IT personnel.

However, in more recent times, with the advent of lighter, and often smaller, CPUs and other technology, an increasing preference has been for this equipment to rise and fall with the desk in either the standing or sitting mode. The Optima Ascend meets this requirement perfectly. The interchangeable technology enclosure, with drop-down hinged door, provides straightforward access to all items of technology and cables. Sockets can either be accessed from the front, or the top of the enclosure, via the sliding worksurface, which is a common feature on all DAS trading desks.

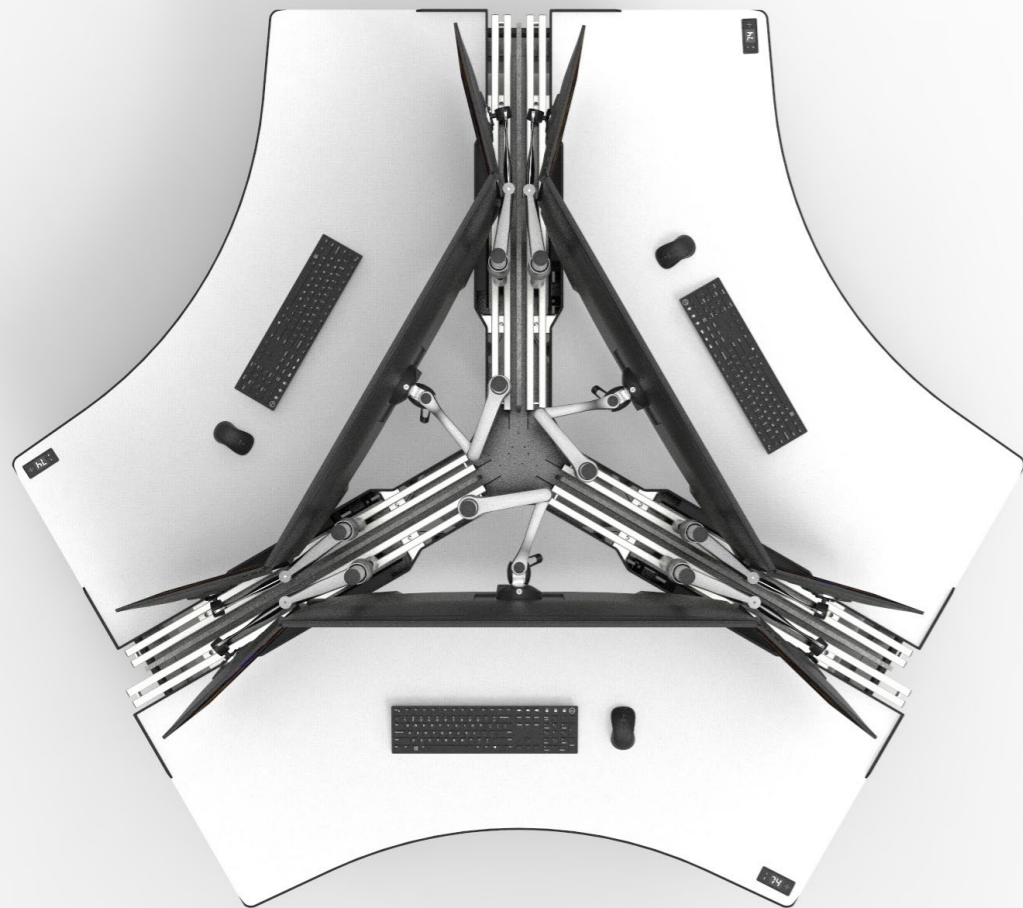
Due to the modular nature of the Optima product range, the dimensions of the Ascend technology enclosure can also be adapted to meet specific project requirements and to 'future proof' it as technology changes.

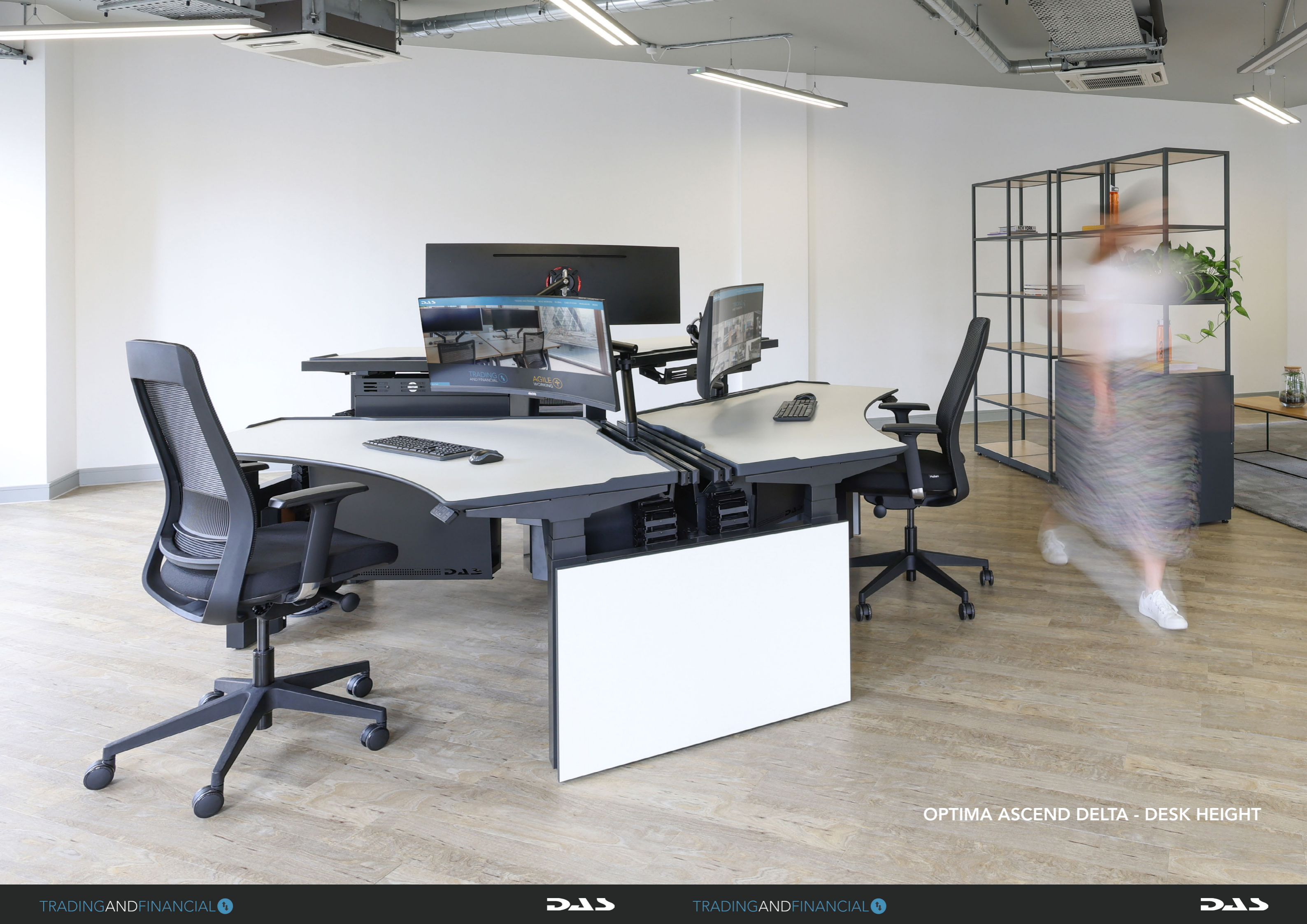


OPTIMA ASCEND DELTA

While possessing all the same features as the linear Ascend desk, the Delta version offers a different aesthetic and also the opportunity to have either a single, 2 matching, or 2 varying sizes of technology enclosure, to meet specific requirements.

All desks can be fed with services either from separate end risers or a single central riser to feed all desks in a cluster of 3 positions. The 120° ergonomic desk shape lends itself perfectly to the increasing trend for ultra-wide curved screens or configurations with a large central landscape format screen with portrait format side screens.





OPTIMA ASCEND DELTA - DESK HEIGHT



OPTIMA ASCEND DELTA - STANDING HEIGHT

DATUM LIGHT TRADER

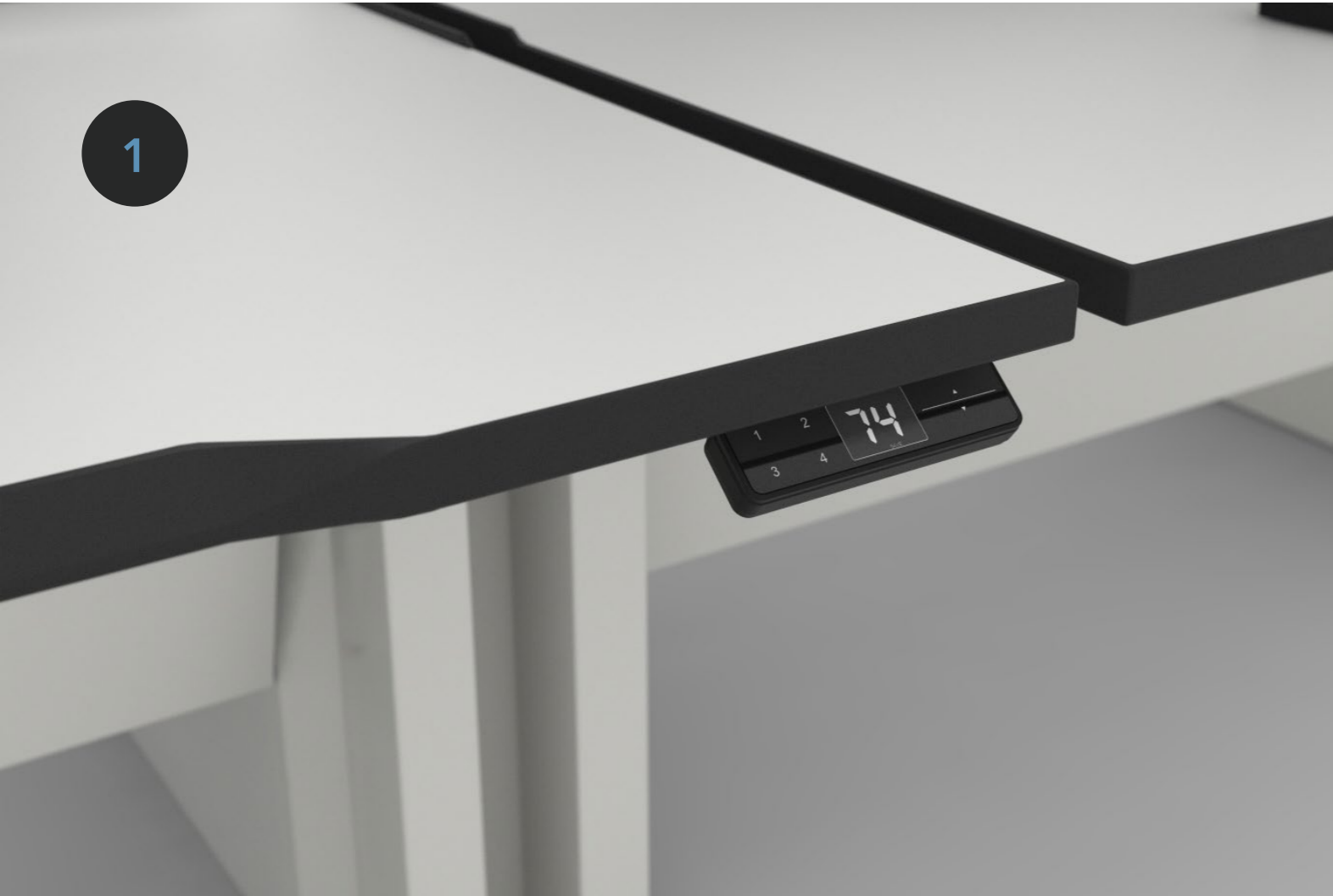
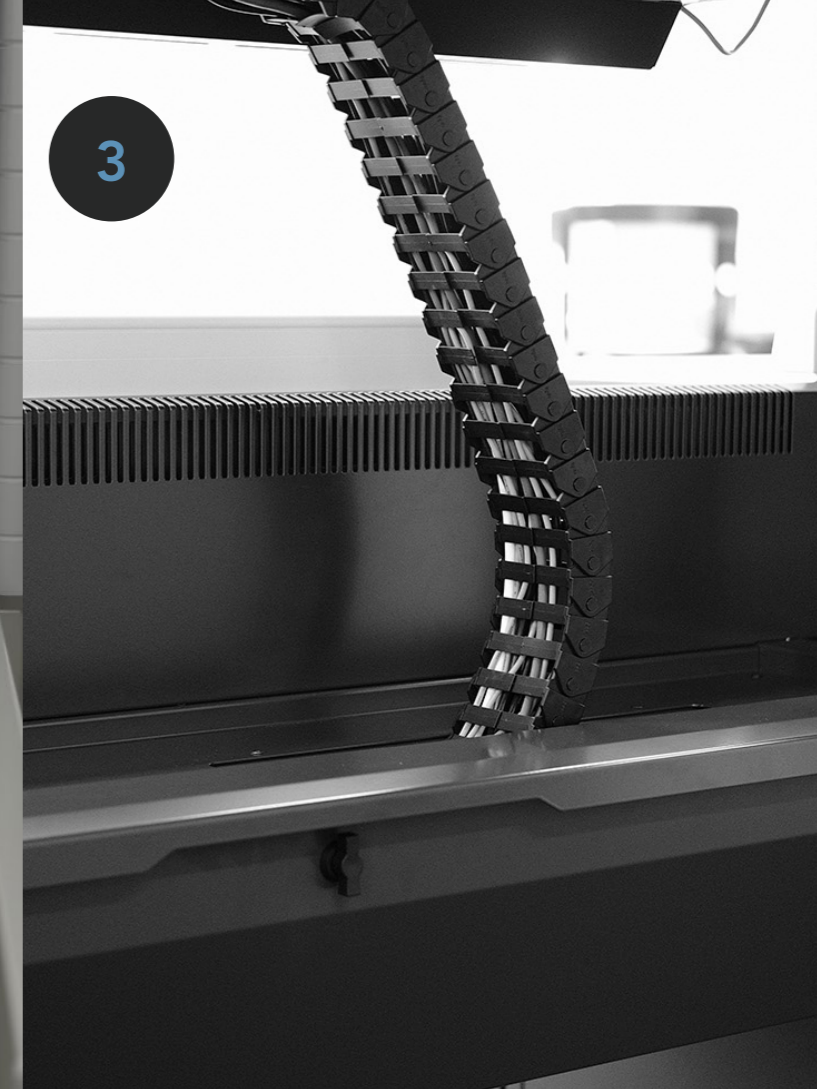
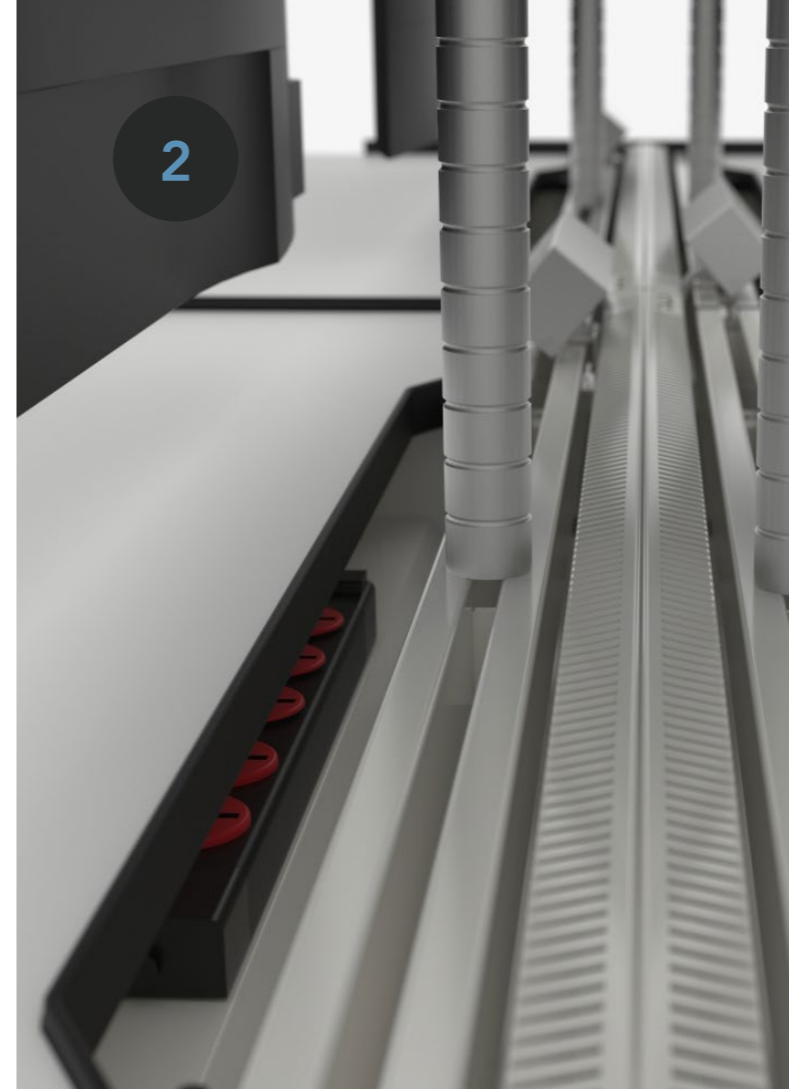
The DATUM Light-Trader system was designed to bridge the gap between trading desks and regular workstations, offering the potential to create a single aesthetic across an entire office floor.

Though 'light' in looks, this workstation shares key features with our OPTIMA trader desks and is more than capable of supporting up to 6 screens and 2 CPUs.



TRADING DESK KEY FEATURES

1. Height-adjustment controller with digital display and 4 programmable pre-sets
25mm finger gap between worksurfaces
The molded ergonomic PU front edge of the worksurface
2. Monitor arms are mounted to the DAS management rail at the rear of the worksurface
Cable scallop to rear of worksurfaces, with PU molded 'drip lip'.
3. Articulating cable track for cable management between low and high level
4. The above-worksurface power module fixed to management rail
5. Central vent grille for passive cooling of air from CPUs beneath



AGILE
WORKING



+

GLOBAL
SOLUTIONS



THE EVOLUTION OF THE WORKPLACE

The modern workplace requires a wide range of distinct areas for different ways of working, whether that be fixed workstations, collaborative areas, private meeting rooms, or areas for video conferencing.

Having complimentary furniture for these areas with best-in-class integrated technology and connectivity capabilities is crucial to the effectiveness of the future workplace.

DAS continue to expand our portfolio of furniture to offer high-quality solutions that does just that, for all corners of the office.

To find out more, please read our [AGILE WORKING](#) brochure.



WE ARE A GLOBAL BRAND

For over 35 years DAS have worked alongside world leading brands across the globe. We have refined our design, project management, delivery, installation and local after-care to a point where we are trusted with projects that are catering for thousands of employees from different backgrounds and cultures.

From our offices in New York to our partners in Asia, Australia and the Middle East, to name just a few, we are able to support any interior project with our superb attention to detail, quality of product and second to none service.



DAS

24 ANGEL GATE | LONDON | EC1V 2PT

T: +44 (0) 20 7247 3612

E: hello@dasbf.com