



FORD® PLANT SOLUTIONS

For Quotations please email: quotes@fordmeterbox.com

For Additional Information: treatmentplantinfo@fordmeterbox.com

*Please contact Ford Meter Box for additional information, different sizes or if higher ratings are required, email treatmentplantinfo@fordmeterbox.com



Ford CSFG - Cap Style Flange Gasket for easy flange installation

- Sizes: 4" - 12"
- Working Pressure: 275 PSI
- For Class D and E flanges only
- Equivalent: Romac Tapping Flange Gasket



Ford FC202 - Cast Ductile Iron Saddles with Epoxy Coating and Stainless Bands up to 2" taps

- Sizes 2" - 30"
- Working Pressure: 2" - 12" 350 PSI, 14" - 30" 250 PSI (not to exceed pipe rating)
- Equivalent: Romac 202S/202NS, Smith Blair 317/397, JCM 404, PowerSeal 3417DI



Ford FC202 - Fabricated Steel Saddles with Epoxy Coating up to 4" taps

- Sizes: 6" - 60"
- Working Pressure: 150 PSI minimum
- Equivalent: Smith Blair 357



Ford FC2W - Ultra Flex Wide Range Coupling

- Sizes: 3"-12", 16"
- Working Pressure: 3"-12" 350 PSI, 16" 250 PSI
- Equivalent: Romac XR501, Smith Blair 461 Quantum, JCM 241, PowerSeal 3506



Ford FC4 - Steel Coupling

- Sizes: 14"-60"
- Working Pressure: 200 PSI minimum up to 650 PSI
- Available with endcaps
- Equivalent: Romac 400, Smith Blair 411, JCM 201



Ford FC5 - Steel Transition Coupling

- Sizes: 14"-60"
- Working Pressure: 200 PSI minimum up to 650 PSI
- Available with endcaps
- Equivalent: Romac RC400, Smith Blair 413, JCM 203



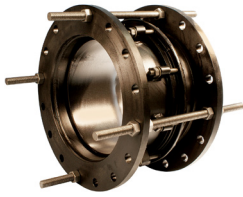
Ford FC6 - Steel Reducing Coupling

- Sizes: 2"-60"
- Working Pressure: 150 PSI minimum, higher pressure available
- Fully configurable
- Equivalent: Romac TC400, Smith Blair 415, JCM 205



Ford FCA - Fabricated Flanged Coupling Adapter

- Sizes: 4”-36”
- Working Pressure: 150 PSI, rating limited by flange rating, higher ratings are available
- Equivalent: Romac FC400, Smith Blair 913, JCM 303



Ford FDJ - Dismantling Joint Applicable for Flanged Pipe

- Sizes: 2”-36”
- Working Pressure: 150 PSI based on the flange, higher ratings available
- Can be “restrained” with tie rods (-R)
- Equivalent: Romac DJ400, Smith Blair 972/975, JCM 309



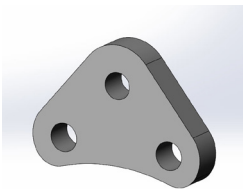
Ford FFCA - Cast Ductile Iron Flange Coupling Adapter

- Sizes: 4”-12”
- Working Pressure: 175 PSI
- Equivalent: Romac FCA501, Smith Blair 912, JCM 301



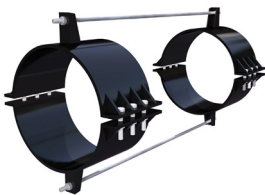
Ford FEJ - Longitudinal Expansion Joint

- Sizes: 4”-24”
- Working Pressure: 4” - 16” 150 PSI, 18” 125 PSI, 20”-24” 100 PSI”
- Up to 10” of expansion
- Equivalent: Romac EJ400, Smith Blair 611/612, JCM 801/802



Ford FL & ATRN - Three-hole Harness Lug for Class 150 and Class 300 flange hole drilling. Companion rods and nuts for the FL.

- Sizes: 3”-72” steel and ductile iron pipe
- Working Pressure: Varies based on quantity
- Available with no coating, shop coat or epoxy. Available in stainless steel
- Weathering steel
- Equivalent: Romac 490, Smith Blair 907



Ford FR - Friction Based Clamp-on Restraint

- Sizes: 10” - 64”
- Working Pressure: Customizable
- Need to know pipe type, size and pressure to design



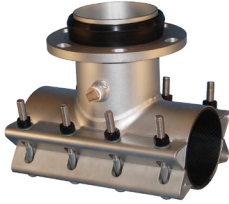
Ford FS3X3 - All Stainless Steel Service Saddle up to 2” taps

- Sizes: 2” - 36”
- Working Pressure: 250 PSI (not to exceed pipe rating)
- Equivalent: Romac 304/306, Smith Blair 371/372, JCM 502, PowerSeal 3411AS, 3412AS, 3414AS



Ford FTSC - Carbon Steel Epoxy Coated Tapping Sleeve

- Sizes: 4” - 54”
- Working Pressure: 4”-12” 250 PSI, consult factory for rating on larger sizes
- MJ Adapter Outlet Available
- Equivalent: Romac FTS420, Smith Blair 622, JCM 412, PowerSeal 3460



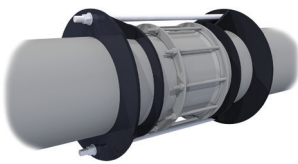
- Ford FTSS** - All Stainless Steel Tapping Sleeve with Removable Bolts
- Sizes: 4" - 48"
 - Working Pressure: 4"-12" 250 PSI, consult factory for rating on larger sizes
 - MJ Adapter Outlet Available
 - Equivalent: Romac SSTIII, Smith Blair 664/665, JCM 432/462, PowerSeal 3490 AS/CS



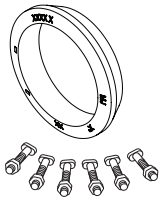
- Ford FWS** - Weld-on Tapping Sleeve for steel and stainless steel pipe
- Sizes: 3" - 48"
 - Working Pressure: 150 PSI, rating limited by flange rating, higher ratings are available
 - Equivalent: Romac FTS 445, Smith Blair 626, JCM 416/417



- Ford Insert** - Stainless Insert Stiffeners for HDPE pipe
- Sizes: 3"-36"
 - Need Pipe ID to ensure fit
 - Equivalent: Romac Stiffening Inserts, Smith Blair Maxi-Grip Stiffener, JCM Model 230



- Ford M11-joint harness** - Welded Joint Harness for steel pipes per AWWA M11
- Sizes: 14" - 96"
 - Working Pressure: Ratings up to 250 PSI
 - Available in type 304 and type 316 stainless steel
 - Equivalent: Known as M11 harness industry wide



- Ford MJAK** - Mechanical Joint Accessory Kit
- Sizes: 3" - 48"
 - Equivalent: EBAA 9000EC



- Ford MJTS** - Mechanical Joint Style Tapping Sleeve
- Sizes: 4" - 30"
 - Working Pressure: 305 PSI
 - Equivalent: Romac FTS425, Smith Blair 623/624, JCM 414



- Ford RCDD** - Restrained Coupling for joining Ductile to Ductile for C151 Ductile pipe.
- Sizes: 3" - 36"
 - Working Pressure: 3"-12" 350 PSI, 14" -36" 250 PSI
 - Equivalent: EBAA 3800, Romac 400RG, Smith Blair 471



- Ford RCDP (small)** - Restrained Coupling for joining ductile to various other pipe types including: Ductile to C900 PVC, C909 PVCO, SDR 35, C151 Ductile, IPS PVC, Steel
- Sizes: 3" - 12"
 - Working Pressure: Varies based on pipe type but generally the same as the pipe rating
 - Equivalent: EBAA 3800, Smith Blair 473



- Ford RCDP (large)** - Restrained Coupling for joining C151 Ductile to C900 PVC
- Sizes: 14”-36”
 - Working Pressure: Varies based on pipe type but generally the same as pipe rating
 - Equivalent: EBAA 3800, Smith Blair 473



- Ford RCPP (small)** - Restrained coupling for joining various pipe types including: C900 PVC, C909 PVCO, SDR 35, C151 Ductile, IPS PVC, and Steel
- Sizes: 3”-12”
 - Working Pressure: Varies based on pipe type but generally the same as the pipe rating for plastic pipe. Contact factory for metallic pipe ratings.
 - Equivalent: EBAA 3800, Smith Blair 472



- Ford RCPP (Large)** - Restrained Coupling for joining C900 to C900 PVC
- Sizes: 14”-36”
 - Working Pressure: Meets rating of the PVC pipe but may be limited by the flange rating
 - Equivalent: EBAA 3800, Smith Blair 472



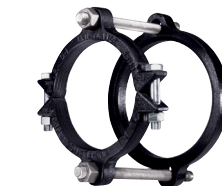
- Ford RFAD** - Restrained Flange Adapter for C151 Ductile Iron Pipe
- Sizes: 3”-36”
 - Working Pressure: Meets rating of the DI pipe but may be limited by the flange rating
 - Equivalent: EBAA 2100, Romac RFCA, SigmaFlange, StarFlange



- Ford RFAP** - Restrained Flange Adapter for Plastic Pipe (4”-12” works on C900 PVC, C909 PVCO, SDR 35, C151 Ductile, IPS PVC, Steel and 14”-36” works on C900)
- Sizes: 3” - 36”
 - Working Pressure: Varies based on pipe type but generally the same as the pipe rating for plastic pipe. Contact factory for metallic pipe ratings.
 - Equivalent: EBAA 2100, Romac RFCA, SigmaFlange, StarFlange



- Ford UFR1300** - Clamp-on Style Restraint for CIOD sized PVC pipe, IPS OD PVC pipe and 4” - 12” DI sizes
- Sizes: 2” - 42”
 - Working Pressure: Meets rating of the PVC pipe, 4”-8” DIP 250 PSI, 10”-12” DIP 200 PSI, 14” DIP 150 PSI
 - “-CA” for accessory kits
 - Equivalent: EBAA 1500MJ, Romac 612/470, Sigma PV-Lok, Star 1000



- Ford UFR1350** - Bell Joint Restraint for new applications for C900 and IPS PVC
- Sizes: 2”-24”
 - Working Pressure: Meets rating of the PVC pipe
 - Solid back-up ring that fits behind bell
 - Equivalent: EBAA 1600, Sigma PV-Lok PWH



- Ford UFR1360** - Restraint for AWWA C907 PVC Pressure Fittings for C900
- Sizes: C900 4”-36”, IPS PVC 2”-8”
 - Working Pressure: Meets rating of the PVC fitting
 - Split back-up ring
 - Equivalent: EBAA 2500, Sigma PV-Lok PWPF/PVPE, Star 1200



Ford UFR1390 - Bell Joint Restraint for C900 PVC pipe

- Sizes: 2” - 42”
- Working Pressure: Meets rating of the PVC pipe
- Two 1300s connected
- Equivalent: EBAA 1500, Romac 611, Sigma PV-Lok PVP/PWP, Star 1100



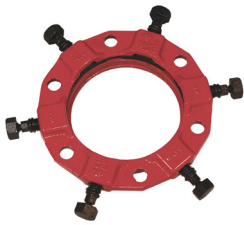
Ford UFR1400 - Wedge Action Restraint for AWWA C151 DI pipe, can be used as MJ gland

- Sizes: 3” - 48”
- Working Pressure: 3”-16” 350 PSI, 18”-48” 250 PSI
- Equivalent: EBAA 100, Romac Romagrip, Sigma SLDE, StarGrip 3000



Ford UFR1450 - Wedge Action Restraint for AWWA C151 DI pipe Push-on Bell and Spigot

- Sizes: 3” - 48”
- Working Pressure: 3”-16” 350 PSI, 18”-48” 250 PSI
- Equivalent: EBAA 1700, Stargrip 3100P, Sigma SLDEH



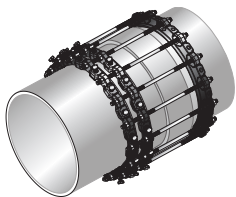
Ford UFR1500 - Segmented Ring MJ Style Restraint for C900, HDPE, IPS PVC, PVCO, DI, and Steel pipe

- Sizes: 3” - 48”
- Working Pressure: Meets rating of most plastic pipe. Contact factory for metallic pipe ratings.
- Insert required for HDPE
- Equivalent: EBAA 2000PV, Romac RomaGrip PVC, Sigma SLCE, StarGrip 4000



Ford UFR2800 - Tandem Wedge Action Restraint for High Pressure installation on AWWA C151 DI Pipe

- Sizes: 3” - 36”
- Working Pressure: 3” - 12” 500 PSI, 14”-16” 450 PSI, 18” -36” 350 PSI
- Equivalent: EBAA 1100 TDM



Ford UFR2850 - Tandem Wedge Action Restraint for High Pressure AWWA C151 Push-on Bell and Spigot Connections

- Sizes: 3” - 36”
- Working Pressure: 3” - 12” 500 PSI, 14”-16” 450 PSI, 18” -36” 350 PSI



Ford UFRCS1300 - Restrained Casing Spacer using 1300 restraints for C900 and 4” - 12” DIP

- Sizes: C900 2” - 36”, DIP 4” - 12”
- Working Pressure: Meets rating of the PVC pipe
- For push-or-pull in a pipe casing