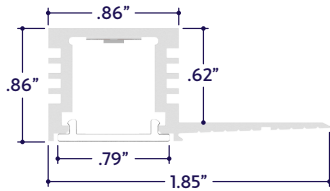


### GENERAL FEATURES

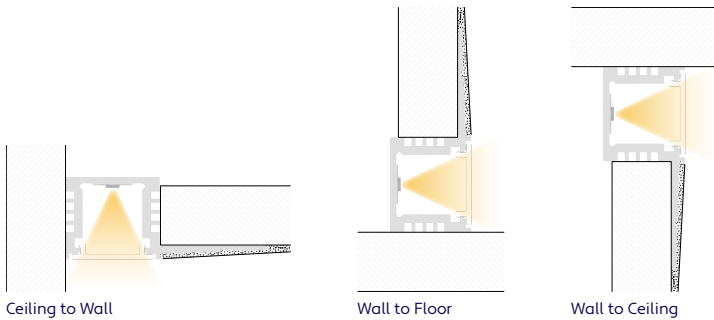
<b>Applications</b>	Mud-In, Accent, Decorative, Surface, Recessed Lighting
<b>Viewing Angle</b>	15°, 30°, 45°, 60°, 120°, and Asymmetric Optics
<b>Viewing Angle</b>	120°
<b>Length</b>	Built to Order (+/- 1/8" Tolerance)
<b>Construction</b>	Aluminum Extrusion
<b>Field Cutting</b>	Dry, Damp, and Wet Location Field Cuttable
<b>Weight</b>	0.47 lbs per foot
<b>Mounting</b>	Mud-In
<b>Listing</b>	Dry, Damp, or Wet Location UL2108, 67.1.9, 60.4, CSA C22.2 #9 UL8750, CSA250
<b>Driver</b>	Remote (Sold Separately)
<b>Temperature Ratings</b>	Operating / Startup: -20° to 48°C (-4° to 120°F) Storage: -40° to 76°C (-40° to 170°F)

[Installation Link](#)

### END VIEWS / DIMENSIONS



### MOUNTING OPTIONS



### ELECTRICAL

<b>Dimming</b>	DMX, DALI
<b>Maximum Run (Class 1 Applications)</b>	26' (4.5W) 33' (3.6W)
<b>Maximum Run (Class 2 Applications)</b>	18' (4.5W) 23' (3.6W)
<b>Luminaire Voltage</b>	24VDC

### SPECIFY PRODUCT CODE | CHOOSE FROM DROP DOWNS

Series	Lens	Watts per Foot	Dimming	LED	Listing	Finish	Luminaire Length
<b>A8-ZUDA-FPF</b>				<b>DWH</b>			
ZUDA Flush Perimeter Floor (A8-ZUDA-FPF)	50% Semi-Frosted Lens (SF)	3.6 Watts (3.6W)	DMX-512* <sup>1</sup> (DMX)	2400K - 6400K (DWH)	Indoor (DRY)	Natural Silver (NA)	Specify Length in Feet & Inches <b>Example:</b> 7'8"
	100% Frosted Lens (F)	4.5 Watts (4.5W)	DALI* <sup>2</sup> (DALI)		Outdoor (DAMP)	Polished (PA) White* <sup>4</sup> (WH)	
	Asymmetric Lens (ASM)				Outdoor* <sup>3</sup> (WET)	Satin / Silver (SA) Black (BK)	
	15° Optics (15D)						
	30° Optics (30D)						
	45° Optics (45D)						
	60° Optics (60D)						

\*<sup>1</sup> Default DMX address of each luminaire is 001. Consult third party DMX commissioner to modify at time of installation.  
 \*<sup>2</sup> DALI commissioning to be performed by a third party at time of installation. ALUZ does not provide DALI commissioning.  
 \*<sup>3</sup> Run lengths are required for Wet Location products. Provide run lengths at time of order.  
 \*<sup>4</sup> Default finish is White (WH) if left blank.



### LAMP FEATURES

Lamp Type	Dynamic White LEDs: 2400K - 6400K
CRI	> 90

### LENS / OPTICS APPEARANCE



50% Semi-Frosted Lens (SF)  
Slight Diode Image  
12.5% Loss Factor



100% Frosted Lens (F)  
No Diode Image: Line of Light  
25% Loss Factor



Asymmetric Lens (ASM)  
Slight Diode Image  
18% Loss Factor

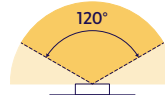


Optic Lens (15D, 30D, 45D, 60D)  
Slight Diode Image  
18% Loss Factor

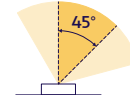
### LAMP SPECIFICATIONS

Lamp Number	Correlated Color Temperature (CCT) Gamut	L70 LED Life
DWH	Dynamic White: 2400K - 6400K	50,000 hrs.

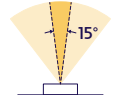
### BEAM ANGLES



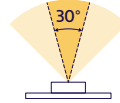
120° x 120° Beam  
50% Semi-Frosted Lens (SF)  
100% Frosted Lens (F)



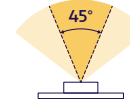
45° x 60° Beam  
Asymmetric Lens (ASM)



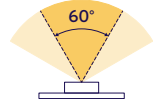
15° x 60° Beam  
Optic Lens (15D)



30° x 60° Beam  
Optic Lens (30D)



45° x 60° Beam  
Optic Lens (45D)

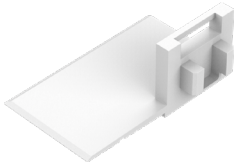


60° x 60° Beam  
Optic Lens (60D)

### DRIVERS

Dimming Selection	Product Code	Link to Specification Sheet / URL
DMX-512	(DMX)	
DALI	(DALI)	

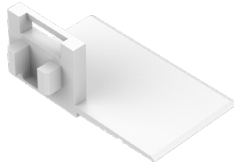
### END CAPS (Sold Separately)



Left End Cap  
(A8-ZUDA-FPF-ECL)

Part #	Qty.
A8-ZUDA-FPF-ECL	

Note: Use 1 Left End Cap for each termination on the left side.

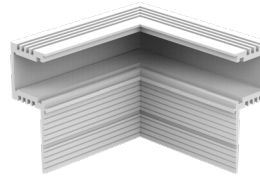


Right End Cap  
(A8-ZUDA-FPF-ECR)

Part #	Qty.
A8-ZUDA-FPF-ECR	

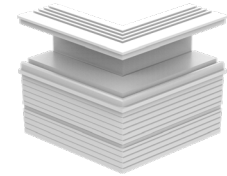
Note: Use 1 Right End Cap for each termination on the right side.

### MITERED CORNERS (Sold Separately)



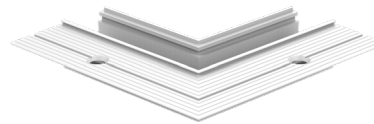
90° Internal Wall Corner  
(A8-ZUDA-FPF-90D-INW)

Part #	Qty.
A8-ZUDA-FPF-90D-INW	



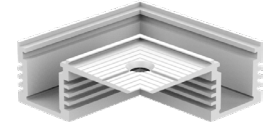
90° External Wall Corner  
(A8-ZUDA-FPF-90D-EXW)

Part #	Qty.
A8-ZUDA-FPF-90D-EXW	



90° External Ceiling Corner  
(A8-ZUDA-FPF-90D-EXC)

Part #	Qty.
A8-ZUDA-FPF-90D-EXC	

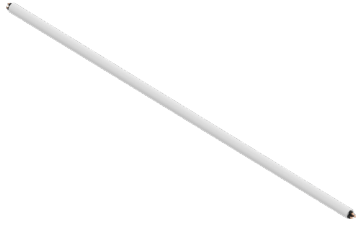


90° Internal Ceiling Corner  
(A8-ZUDA-FPF-90D-INC)

Part #	Qty.
A8-ZUDA-FPF-90D-INC	

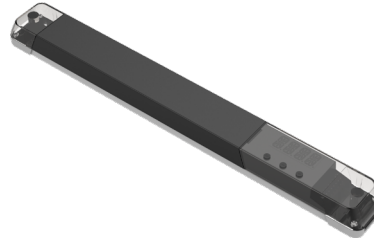
### DRY CONNECTORS (Sold Separately)

**Note:** Connector style subject to change without notice.  
Refer to cut sheet or installation instructions for wiring colors.



Part #	Length	Qty.
A8-PC-3P-PLM-DRY-	36"	
A8-PC-3P-PLM-DRY-		

### DMX ACCESSORIES (Sold Separately)



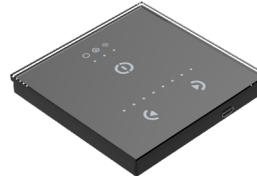
Part #	Qty.
DRV100-E-UNV-24VDC-DMX-DRY	
DRV100-E-UNV-24VDC-DALI-DRY	

**Note:** Use 1 Driver / Decoder for each run up to 100 Watts.



Part #	Qty.
CTRL-DMX-RGBX	

**Note:** Use 1 Decoder for each run up to 96 Watts. Not required if using all-in-one driver / decoder (DRV100-E).



Part #	Qty.
CTRL-DMX-128C	

**Note:** Controls up to 128 DMX Channels.



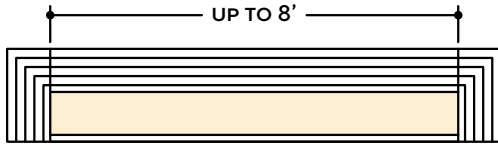
Part #	Qty.
CTRL-DMX-1024C	

**Note:** Controls up to 1024 DMX Channels.

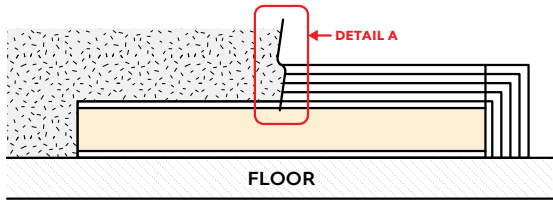


## DESIGN GUIDELINES

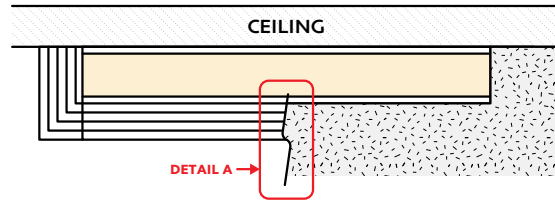
### Individual Fixture



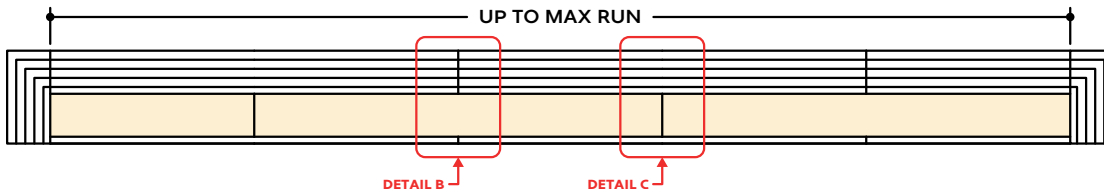
### Individual Fixture with Mud-In (Wall to Floor)



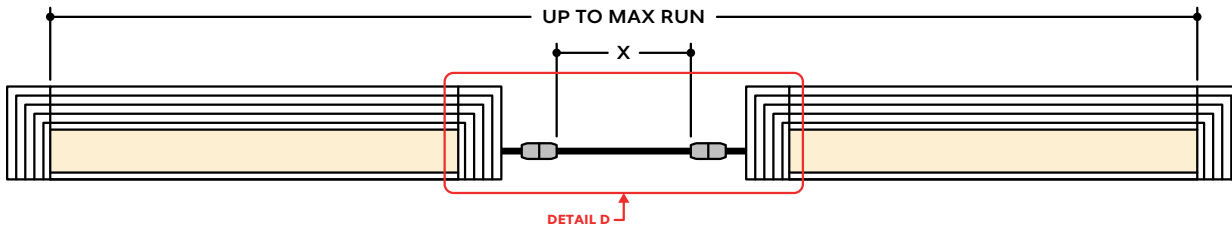
### Individual Fixture with Mud-In (Wall to Ceiling)



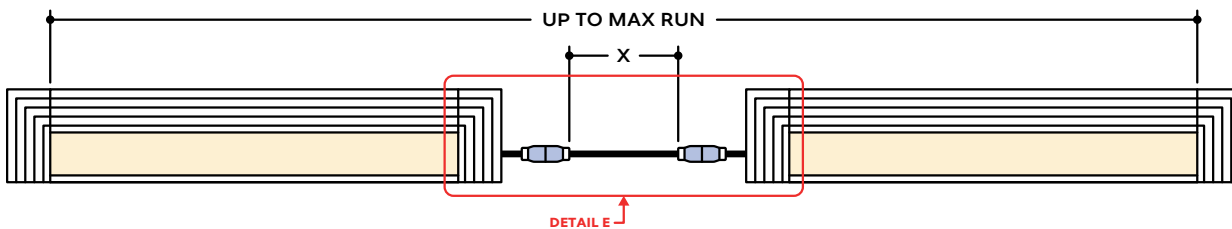
### Continuous Run



### Runs with Continuous Connector (Dry Location)



### Runs with Continuous Connector (Wet Location)



## KEY

- Detail A Mud-In:** Plaster is used to cover the flanges of the extrusion, leaving a flush appearance. Refer to installation instructions for details.
- Detail B Two Extrusions Meet:** Two extrusion segments meet. Refer to installation instructions for additional details.
- Detail C Two Lenses Meet:** Lenses are staggered so that the lens always overlaps where two extrusion segments meet. Refer to installation instructions for additional details.
- Detail D Dry Continuous Connector:** Used to span a corner or traverse a gap, corner, or obstacle in a dry location installation area.
- Detail E Wet Continuous Connector:** Used to span a corner or traverse a gap, corner, or obstacle in a wet location installation area.

**Note:** Drawings not to scale. Product may differ from examples shown.