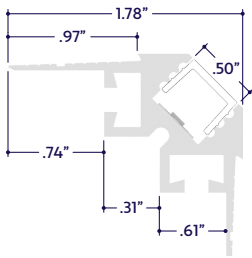


### GENERAL FEATURES

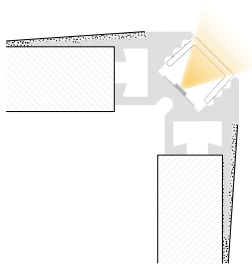
<b>Applications</b>	Mud-In, Accent, Decorative, Surface, Recessed Lighting
<b>Lens</b>	50% Semi-Frosted or 100% Frosted
<b>Viewing Angle</b>	120°
<b>Length</b>	Built to Order (+/- 1/8" Tolerance)
<b>Construction</b>	Aluminum Extrusion
<b>Weight</b>	0.63 lbs per foot
<b>Mounting</b>	Mud-In
<b>Listing</b>	Dry or Damp Location UL2108, 67.1.9, 60.4, CSA C22.2 #9 UL8750, CSA250
<b>Driver</b>	Remote (Sold Separately)
<b>Temperature Ratings</b>	Operating / Startup: -20° to 48°C (-4° to 120°F) Storage: -40° to 76°C (-40° to 170°F)

### Installation Link

### END VIEWS / DIMENSIONS



### MOUNTING OPTION



Mud-In

### LENS / OPTICS APPEARANCE



50% Semi-Frosted Lens (SF)  
Slight Diode Image  
12.5% Light Loss

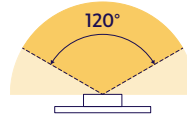


100% Frosted Lens (F)  
No Diode Image; Line of Light  
25% Light Loss

### ELECTRICAL

<b>Dimming</b>	DMX, DALI
<b>Maximum Run (Class 1 Applications)</b>	26' (4.5W) 33' (3.6W)
<b>Maximum Run (Class 2 Applications)</b>	18' (4.5W) 23' (3.6W)
<b>Luminaire Voltage</b>	24VDC

### BEAM ANGLE



120° x 120° Beam

### SPECIFY PRODUCT CODE | CHOOSE FROM DROP DOWNS

Series	Lens	Watts per Foot	Dimming	LED	Listing	Finish	Luminaire Length
<b>A8-ZUDA-FCR</b>				<b>DWH</b>			
ZUDA Flush Corner (A8-ZUDA-FCR)	50% Semi-Frosted Lens (SF)	3.6 Watts (3.6W)	DMX-512*1 (DMX)	2400K - 6400K (DWH)	Indoor (DRY)	Natural Silver (NA)	Specify Length in Feet & Inches Example: 7'8"
	100% Frosted Lens (F)	4.5 Watts (4.5W)	DALI*2 (DALI)		Outdoor (DAMP)	Polished (PA)	
						White*3 (WH) Satin / Silver (SA) Black (BK)	

\*1 Default DMX address of each luminaire is 001. Consult third party DMX commissioner to modify at time of installation.

\*2 DALI commissioning to be performed by a third party at time of installation. ALUZ does not provide DALI commissioning.

\*3 Default finish is White (WH) if left blank.



### LAMP SPECIFICATIONS

Lamp Number	Correlated Color Temperature (CCT) Gamut	L70 LED Life
DWH	Dynamic White: 2400K - 6400K	50,000 hrs.

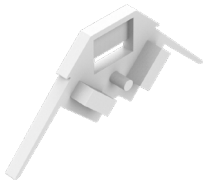
### LAMP FEATURES

Lamp Type	Dynamic White LEDs: 2400K - 6400K
CRI	> 90

### DRIVERS

Dimming Selection	Product Code	Link to Specification Sheet / URL
DMX-512*1	(DMX)	
DALI*2	(DALI)	

### END CAPS (Sold Separately)



End Cap  
(A8-ZUDA-FCR-EC)

Part #	Qty.
A8-ZUDA-FCR-EC	

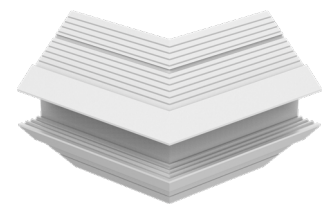
Note: Use 1 End Cap for each terminus.  
End Cap is suitable for left and right side.

### MITERED CORNERS (Sold Separately)



90° Internal Corner  
(A8-ZUDA-FCR-90D-IN)

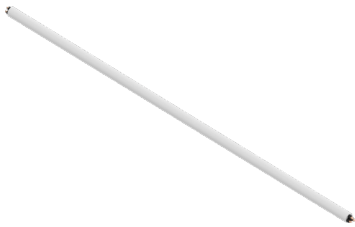
Part #	Qty.
A8-ZUDA-FCR-90D-IN	



90° External Corner  
(A8-ZUDA-FCR-90D-EX)

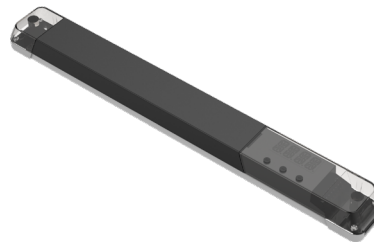
Part #	Qty.
A8-ZUDA-FCR-90D-EX	

### DRY CONNECTORS (Sold Separately)



Part #	Length	Qty.
A8-PC-3P-PLM-DRY-	36"	
A8-PC-3P-PLM-DRY-		

### DMX ACCESSORIES (Sold Separately)



Part #	Qty.
DRV100-E-UNV-24VDC-DMX-DRY	
DRV100-E-UNV-24VDC-DALI-DRY	

Note: Use 1 Driver / Decoder for each run up to 100 Watts.



Part #	Qty.
CTRL-DMX-RGBX	

Note: Use 1 Decoder for each run up to 96 Watts. Not required if using all-in-one driver / decoder (DRV100-E).



Part #	Qty.
CTRL-DMX-128C	

Note: Controls up to 128 DMX Channels.



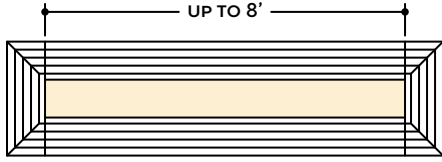
Part #	Qty.
CTRL-DMX-1024C	

Note: Controls up to 1024 DMX Channels.

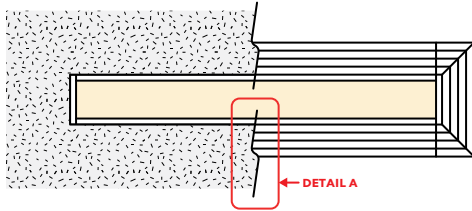


## DESIGN GUIDELINES

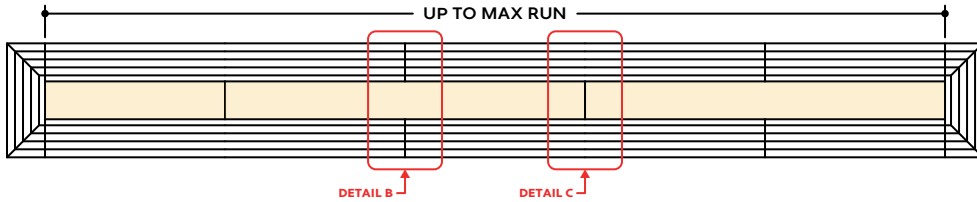
### Individual Fixture



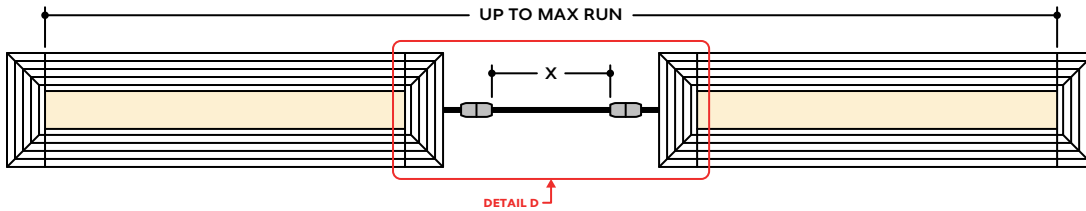
### Individual Fixture with Mud-In



### Continuous Run



### Runs with Continuous Connector (Dry Location)



## KEY

- Detail A Mud-In:** Plaster is used to cover the flanges of the extrusion, leaving a flush appearance. Refer to installation instructions for details.
- Detail B Two Extrusions Meet:** Two extrusion segments meet. Refer to installation instructions for additional details.
- Detail C Two Lenses Meet:** Lenses are staggered so that the lens always overlaps where two extrusion segments meet. Refer to installation instructions for additional details.
- Detail D Dry Continuous Connector:** Used to span a corner or traverse a gap, corner, or obstacle in a dry location installation area. For Mud-In applications, the connection is located behind the mounting surface, such as drywall.

**Note:** Drawings not to scale. Product may differ from examples shown.