

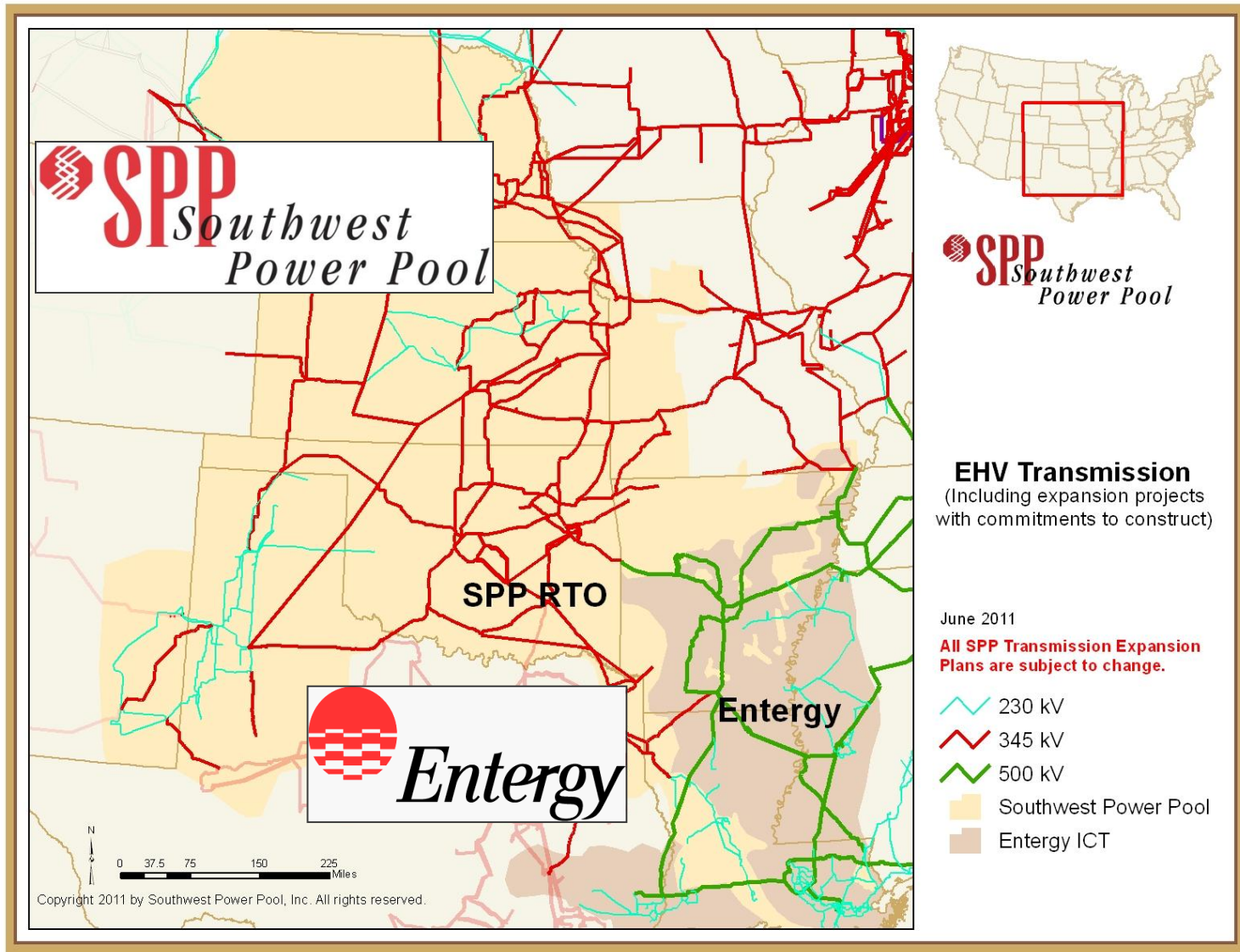
2012 Entergy SPP RTO Regional Planning Process Update (ESRPP)

Entergy ICT Transmission
Planning Summit
August 7, 2012

Eddie Filat
efilat@spp.org · 501.688.1708



Entergy SPP RTO Regional Planning Process



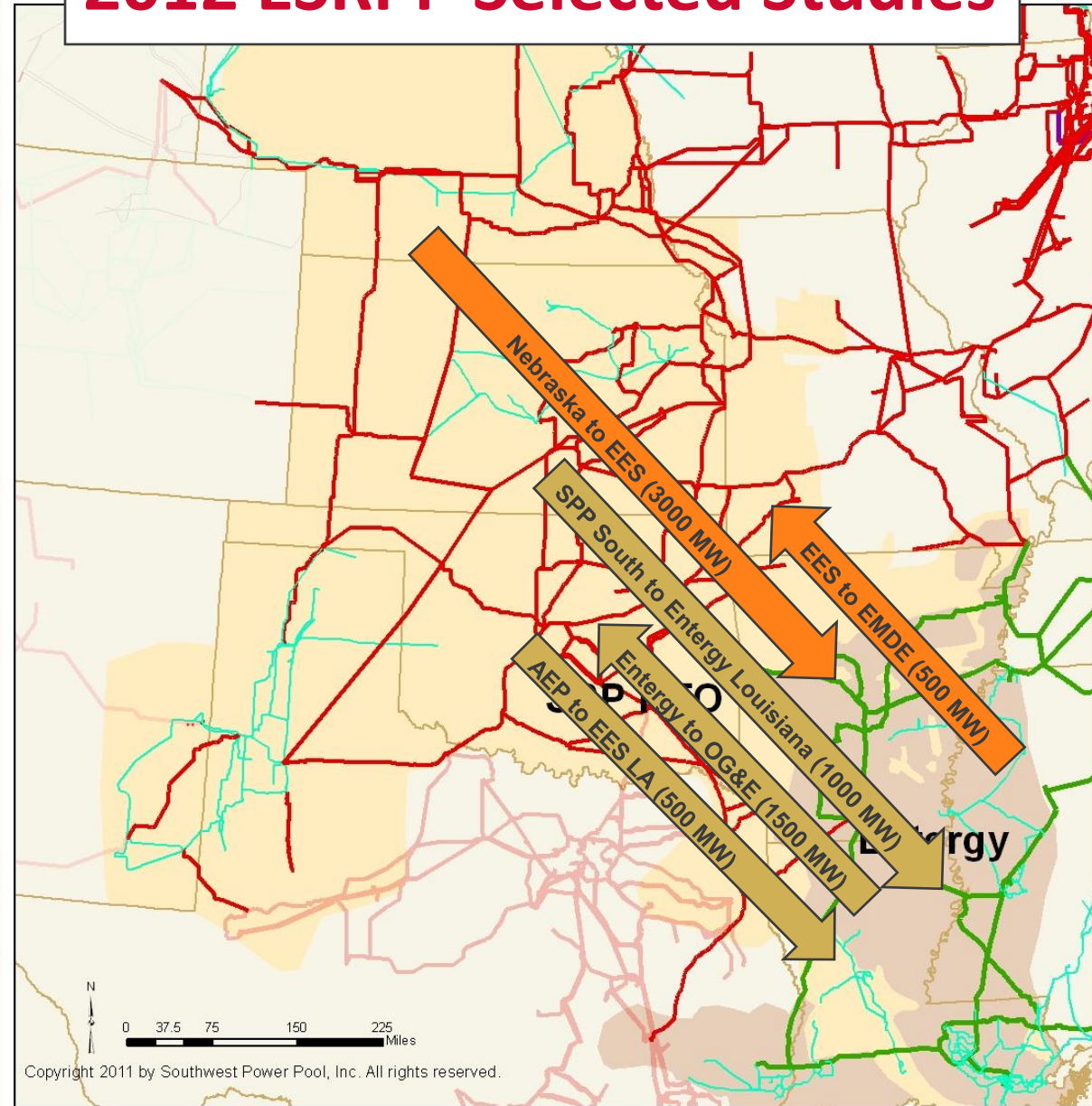
ESRPP Study Selection Criteria

- **Increase transfer capability between a control area in SPP and a control area in Entergy (including Entergy), specifying a transfer amount (POR/POD, MW)**
- **2012 ESRPP Step 1 (High-Level Analysis) Studies**
- **2011 ESRPP Step 2 (Detailed Analysis) Studies**

Stakeholder-Selected Studies

- **Composition of 2012 ESRPP Studies**
 - **Three (3) new high-level studies**
 - **From SPP (South) to Entergy Louisiana for 1000 MW**
 - **From Entergy to OG&E for 1500 MW**
 - **AEP to Entergy Louisiana for 500 MW**
 - **Two (2) Detailed studies selected from the 2011 ESRPP Studies**
 - **From Entergy to EMDE for 500 MW**
 - **From Nebraska to Entergy for 3000 MW**

2012 ESRPP Selected Studies



EHV Transmission
 (Including expansion projects with commitments to construct)

June 2011

All SPP Transmission Expansion Plans are subject to change.

-  230 kV
-  345 kV
-  500 kV
-  Southwest Power Pool
-  Entergy ICT



Copyright 2011 by Southwest Power Pool, Inc. All rights reserved.

ESRPP Stakeholder Meetings/Next Steps

- **1st Meeting – 5/24/2012 – Net conference**
 - **2011 ESRPP Final Report and 2012 ESRPP Kick-Off Meeting**
- **2nd Meeting – 8/7/2012 – ESRPP Meeting (New Orleans)**
 - **Update for Step 1 and Step 2 studies**
- **Post 2012 ESRPP Final Report – November 2012**



Email: ESRPP@SPP.org

Eddie Filat
SPP Interregional
Coordination
501-688-1708
efilat@spp.org

Samrat Datta
Entergy Transmission
Planning
601-985-2231
sdatta@entergy.com

Michael Odom
SPP Interregional
Coordination
501-688-8205
modom@spp.org