

SECRET

HEADQUARTERS ALAMO FORCE  
ATIS ADV ECH NO. 2

Weekly Report of Location and Personnel

1800 hrs - 1 Apr 44

a. Locations:

- 25 (1) Adv Echelon No. 2 - Attached to Sixth Army HQ, APO 712.
- 5 (2) Detachment 21 - Attached to 1st Cavalry Div, APO 324.
- 3 (3) Detachment 22 - Attached to I Corps, APO 301.
- 1 (4) Detachment 23 - Attached to ALAMO Liaison Group, APO 503.\*
- 4 (5) Detachment 24 - Attached to 24th Div, APO 24.

38 \* Being de-activated.

b. Personnel:

25 (1) ATIS Adv Ech No. 2:

- Lt-Comdr S.C. Bartlett, Jr.
- Captain George E. Aurell -
- Captain Paul W. Aurell -
- Lt(jg) S.S. Stratton -
- WO(jg) Sunao Ishio (L-103)
- T T/Sgt Yukitaka Mizutari (L-146)\*\* -
- S/Sgt Masaji G. Uratsu - S/Sgt Thomas T. Sakamoto -
- T/3 James T. Tsumura (L-123) -
- T/3 Kazuhiko Yamada (L-125) -
- T/3 Harry Fukuhara (L-147) -
- T/3 Kazuo Kawaguchi
- E T/3 Ben I. Nakamoto (L-208)\*\* -
- F T/3 Toshio Ogawa\*\* -
- T/4 Elbridge Okazaki (L-115) -
- T/4 Naotsugu Miyasaki -
- T/4 Geo. Sugimoto
- T/4 Harry N. Sekiya
- T/4 Iwao Shimamoto
- T/4 Wataru Shintaku\*\* -
- E T/4 Geo. Z. Kobata\*\*
- E T/4 Kitao Yamada\*\*
- T T/4 Yoshiki Hirabayashi (L-206)
- T/4 P.J. Dillane
- Pfc John Zamarippa

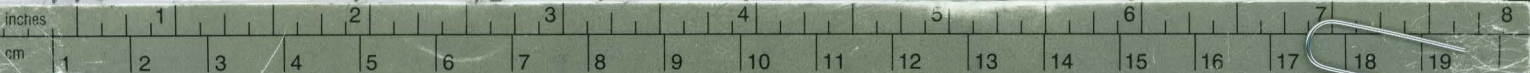
5 (2) ATIS Detachment 21:

Ensign P.S. Gilman

SECRET

RG	Entry	Stack	Row	Comp	Shelf	Box-Folder
496	UD-UP134	290	46	12	4-5	645-17

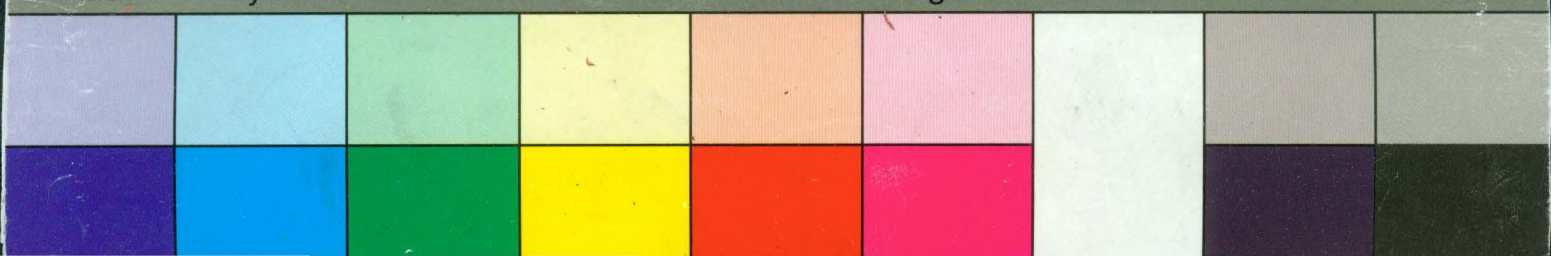
DECLASSIFIED
Authority NND 947500



Kodak Color Control Patches

© Kodak, 2007 TM: Kodak

Blue	Cyan	Green	Yellow	Red	Magenta	White	3/Color	Black
------	------	-------	--------	-----	---------	-------	---------	-------





SECRET

- 1 T/3 Minoru Namba (L-207)
- T/3 Ernest Hirai
- T/4 Noboru Yoshimura
- T/5 Jackson Nagano

3 (3) ATIS Detachment 22:

- S/Sgt Charles T. Nakata
- T/4 Calvin G. Morimatsu
- T/4 George Nakamura

1 (4) ATIS Detachment 23:

WO(jg) S.S. Yamamoto\*\*\*

4 (5) ATIS Detachment 24:

- T/4 Kiyoto G. Hisaoka
- T/4 Masao K. Nakano
- T/4 Takeo Saito
- T/5 Hachiro Kita

38

\*\* Returning to ATIS SWPA on 2 Apr 44.  
 \*\*\* Returning to ATIS Adv Ech No. 2 about 4 Apr 44.

Captain George S. Aurell  
 Captain Paul W. Aurell  
 WO(jg) S.S. Stratton  
 WO(jg) Sunao Ishio (L-103)  
 WO(jg) Yukioka Mizutani (L-126)  
 WO(jg) Masao G. Uratsu  
 WO(jg) James T. Tsunaura (L-123)  
 WO(jg) Yawuhiko Yamada (L-125)  
 WO(jg) Harry Furuhara (L-167)  
 WO(jg) Haruo Kawawuchi  
 WO(jg) Kenji Nakamoto (L-208)  
 WO(jg) Masao Ueno  
 WO(jg) Masao Ozeki (L-115)  
 WO(jg) Masao Miyasaki  
 WO(jg) Masao Shimamoto  
 WO(jg) Masao Shintaku  
 WO(jg) Masao Ueyama  
 WO(jg) Masao Yamashita  
 WO(jg) Masao Yamashita (L-206)

*S. C. Bartlett Jr.*

S.C. BARTLETT, Jr.,  
 Lt-Comdr, USNR,  
 Executive Officer,  
 ATIS Adv Ech No. 2.



- 2 -

SECRET

RG	Entry	Stack	Row	Comp	Shelf	Box-Folder	DECLASSIFIED
496	UD-UP134	290	46	12	4-5	645-17	Authority NND 947500

Kodak Color Control Patches

© Kodak, 2007 TM: Kodak

Blue Cyan Green Yellow Red Magenta White 3/Color Black