

LEGEND

- DETAIL SHEET NUMBER
- BLOCK NUMBER
- SHEET LIMIT
- - - BLOCK LIMIT

I HEREBY CERTIFY THAT THESE TAX MAPS HAVE BEEN REVISED UNDER MY IMMEDIATE SUPERVISION AND COMPLIES WITH THE LAWS OF THE STATE OF NEW JERSEY

THESE TAX MAPS HAVE BEEN RE-DRAWN FROM AND SUPERSEDE THE EXISTING TAX MAPS FOR THE BOROUGH OF MOUNT ARLINGTON AS ORIGINALLY DATED 1943 AND APPROVED BY THE STATE TAX MAP DEPARTMENT ON JUNE 30, 1943. THE AREAS, BOUNDARIES, AND DIMENSIONS SHOWN ON THESE TAX MAPS ARE DERIVED FROM GROUND SURVEYS, RECORDED PLANS, MAPS, DEEDS AND WILLS, AND HAVE BEEN RECERTIFIED FOR ASSESSMENT PURPOSES ONLY.

FRANK A. BEDNAREK, P.L.S.
N.J.P.L.S.# 38314

TAX MAP
BOROUGH OF MT. ARLINGTON
 MORRIS COUNTY, NEW JERSEY
 SCALE = 1" = 600' DATE: JANUARY 8, 2007
FRANK A. BEDNAREK, P.L.S.
 SUBURBAN CONSULTING ENGINEERS
 100 VALLEY ROAD, SUITE 202
 MOUNT ARLINGTON, NEW JERSEY

JEFFERSON TOWNSHIP
MORRIS COUNTY



7
1
STATE OF NEW
JERSEY EXEMPTED
357.27 ACRES (S)
TOTAL

2
42
37.22 ACRES (S)
TOTAL

MATCH LINE

MATCH LINE

SHEET 3

BOROUGH
LINE

LAKE
HOPATCONG

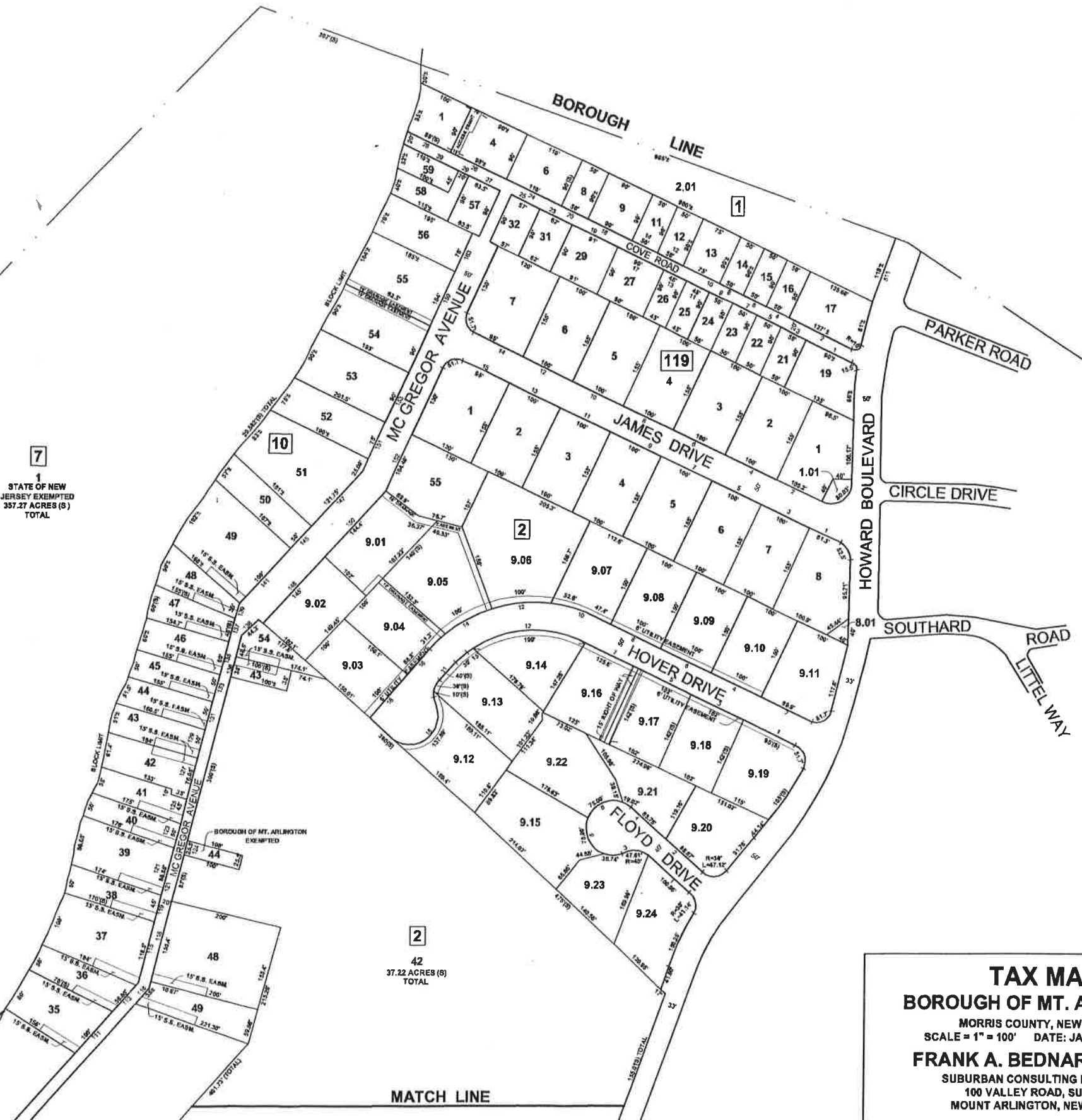
PARKER ROAD

CIRCLE DRIVE

HOWARD BOULEVARD

SOUTHARD ROAD

LITTEL WAY



TAX MAP
BOROUGH OF MT. ARLINGTON
MORRIS COUNTY, NEW JERSEY
SCALE = 1" = 100' DATE: JANUARY 8, 2007
FRANK A. BEDNAREK, P.L.S.
SUBURBAN CONSULTING ENGINEERS
100 VALLEY ROAD, SUITE 202
MOUNT ARLINGTON, NEW JERSEY

SHEET 2

1

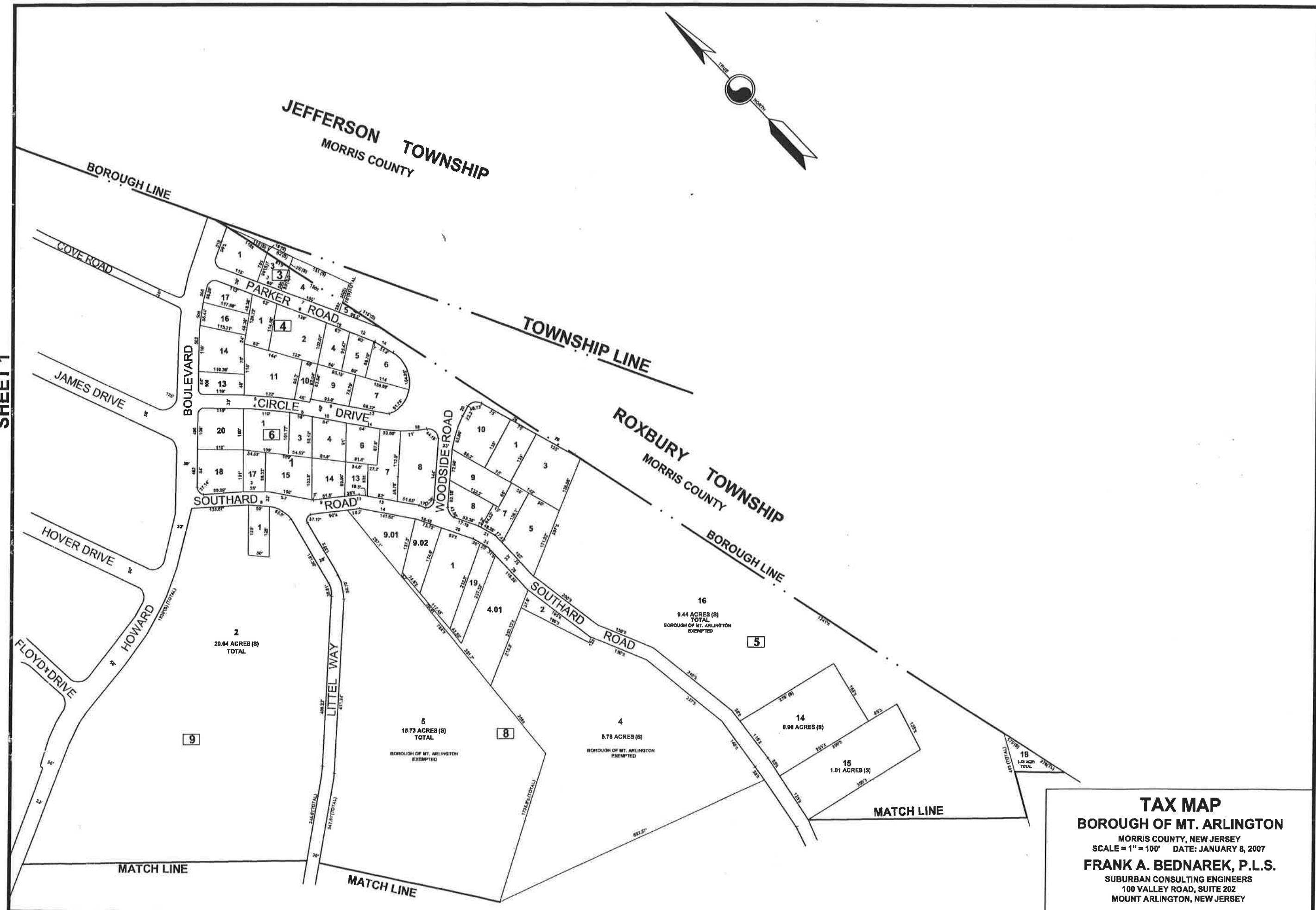


JEFFERSON TOWNSHIP
MORRIS COUNTY

TOWNSHIP LINE

ROXBURY TOWNSHIP
MORRIS COUNTY

SHEET 1



2
20.04 ACRES (S)
TOTAL

5
18.73 ACRES (S)
TOTAL
BOROUGH OF MT. ARLINGTON
EXEMPTED

4
5.78 ACRES (S)
BOROUGH OF MT. ARLINGTON
EXEMPTED

16
9.44 ACRES (S)
TOTAL
BOROUGH OF MT. ARLINGTON
EXEMPTED

14
0.98 ACRES (S)

15
1.01 ACRES (S)

18
1.82 ACRES
TOTAL

MATCH LINE

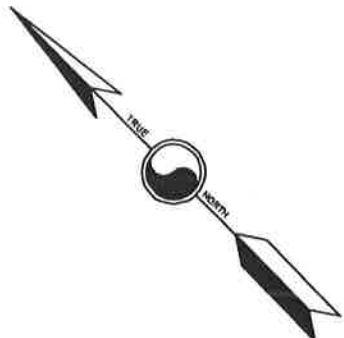
MATCH LINE

MATCH LINE

TAX MAP
BOROUGH OF MT. ARLINGTON
MORRIS COUNTY, NEW JERSEY
SCALE = 1" = 100' DATE: JANUARY 8, 2007
FRANK A. BEDNAREK, P.L.S.
SUBURBAN CONSULTING ENGINEERS
100 VALLEY ROAD, SUITE 202
MOUNT ARLINGTON, NEW JERSEY

SHEET 4

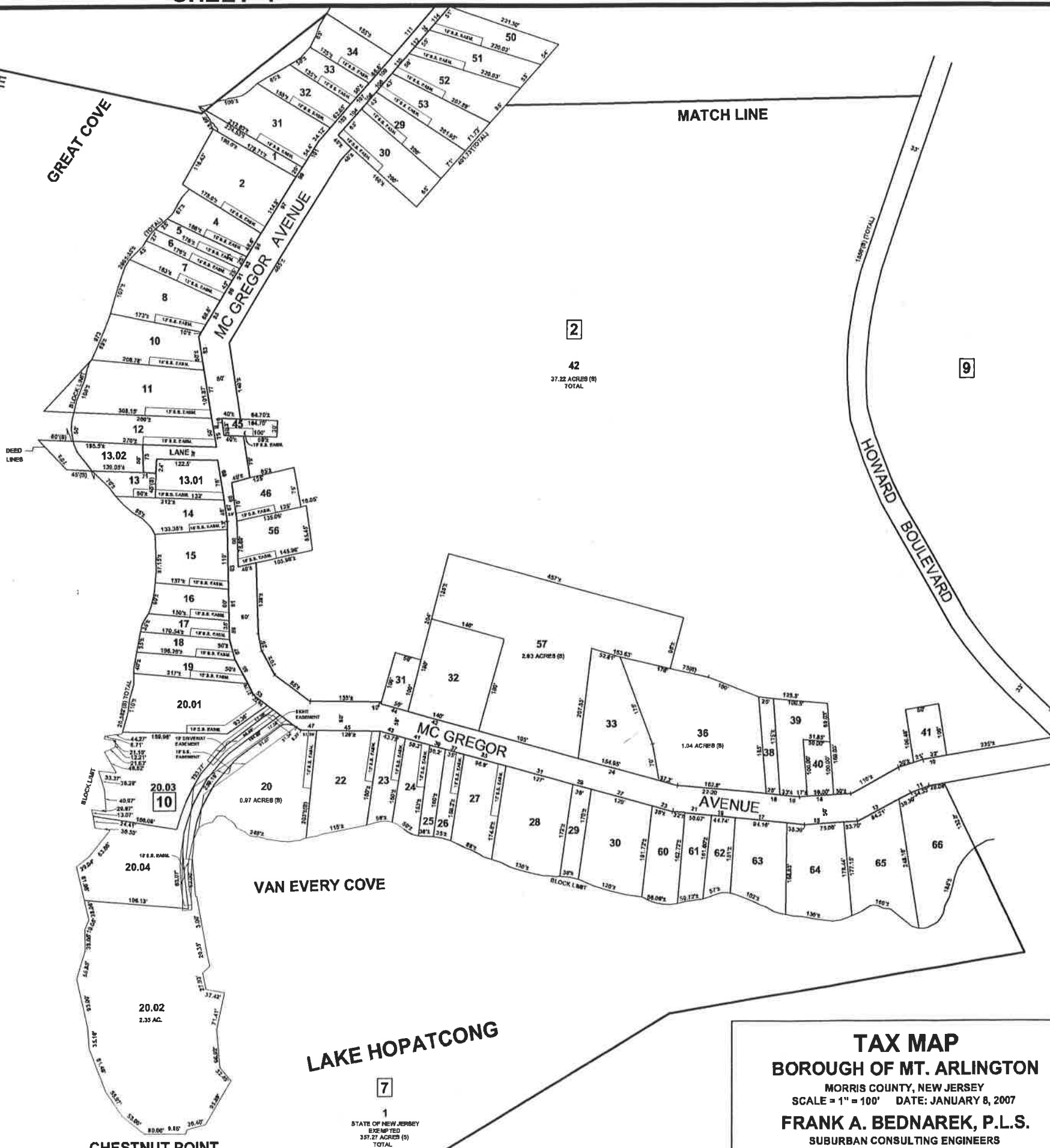
MORRIS COUNTY
JEFFERSON TOWNSHIP
BOROUGH LINE



MATCH LINE

GREAT COVE

MATCH LINE



2

42
37.22 ACRES (B)
TOTAL

9

7

1
STATE OF NEW JERSEY
EXEMPTED 367.27
ACRES (B) TOTAL

LAKE HOPATCONG

COUNTY
COUNTY

BOROUGH OF HOPATCONG
BOROUGH LINE
SUSSEX COUNTY

MORRIS
SUSSEX

BOROUGH LINE

VAN EVERY COVE

LAKE HOPATCONG

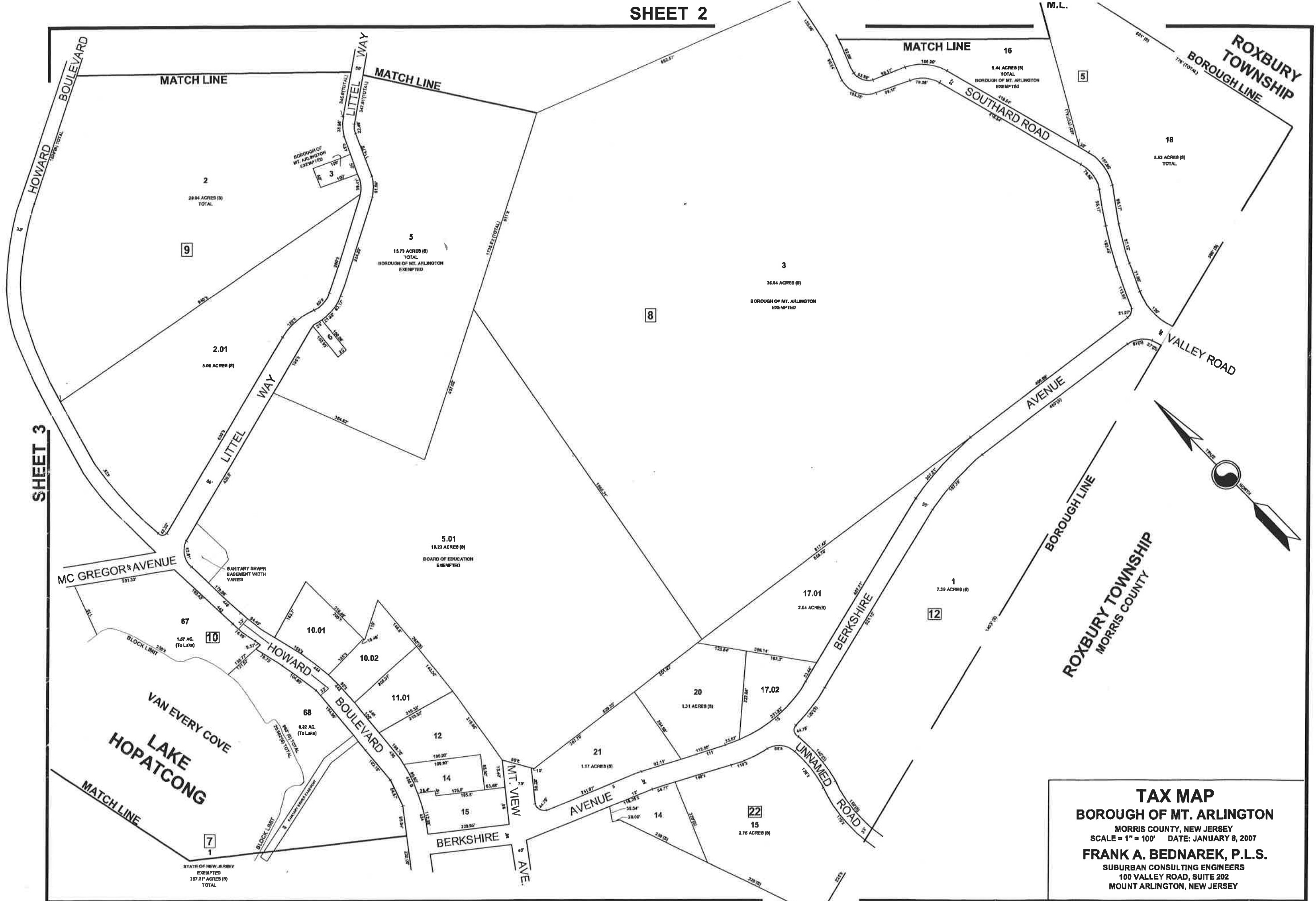
CHESTNUT POINT

7

1
STATE OF NEW JERSEY
EXEMPTED
367.27 ACRES (B)
TOTAL

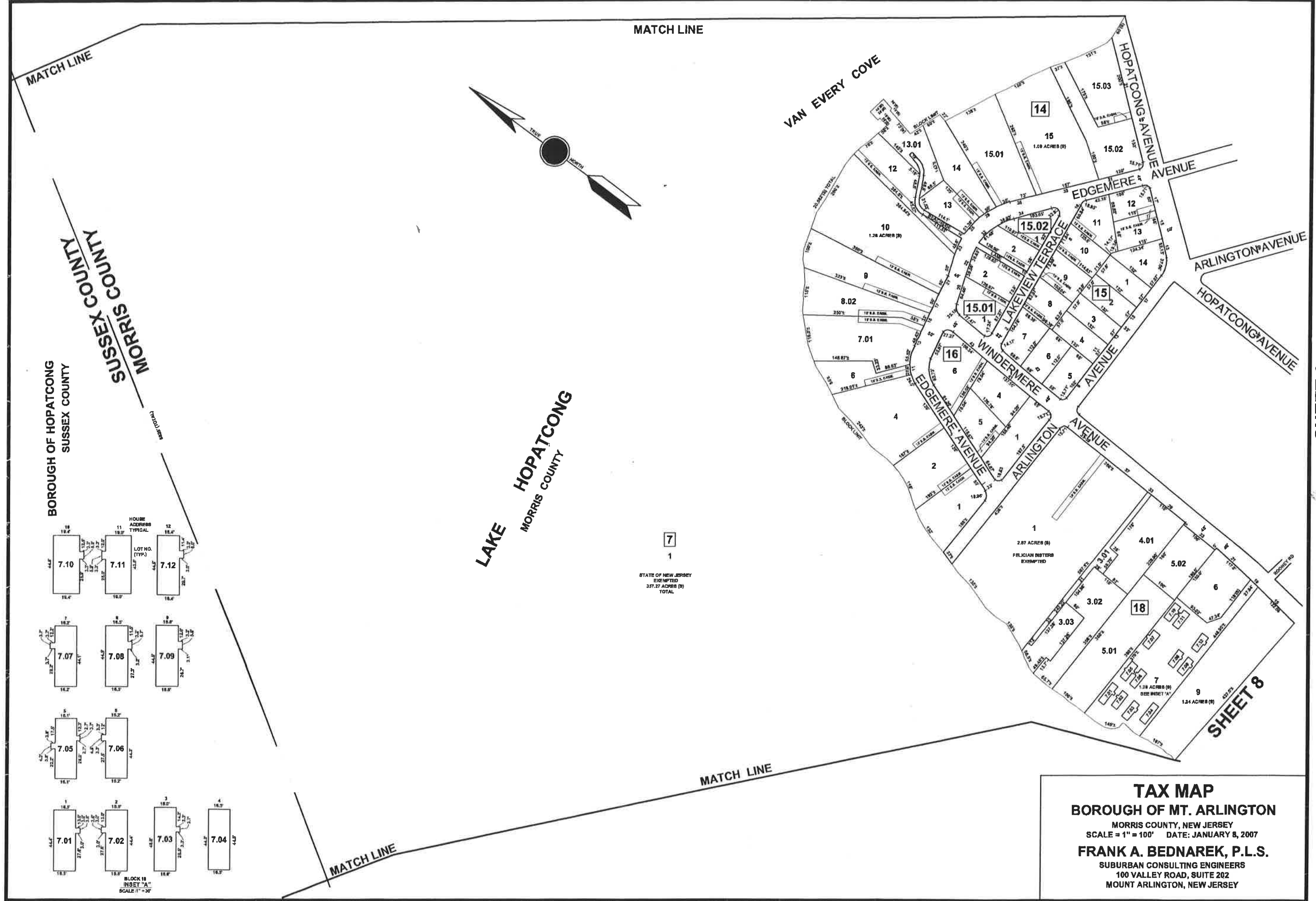
MATCH LINE

TAX MAP
BOROUGH OF MT. ARLINGTON
MORRIS COUNTY, NEW JERSEY
SCALE = 1" = 100' DATE: JANUARY 8, 2007
FRANK A. BEDNAREK, P.L.S.
SUBURBAN CONSULTING ENGINEERS
100 VALLEY ROAD, SUITE 202
MOUNT ARLINGTON, NEW JERSEY



TAX MAP
BOROUGH OF MT. ARLINGTON
 MORRIS COUNTY, NEW JERSEY
 SCALE = 1" = 100' DATE: JANUARY 8, 2007
FRANK A. BEDNAREK, P.L.S.
 SUBURBAN CONSULTING ENGINEERS
 100 VALLEY ROAD, SUITE 202
 MOUNT ARLINGTON, NEW JERSEY

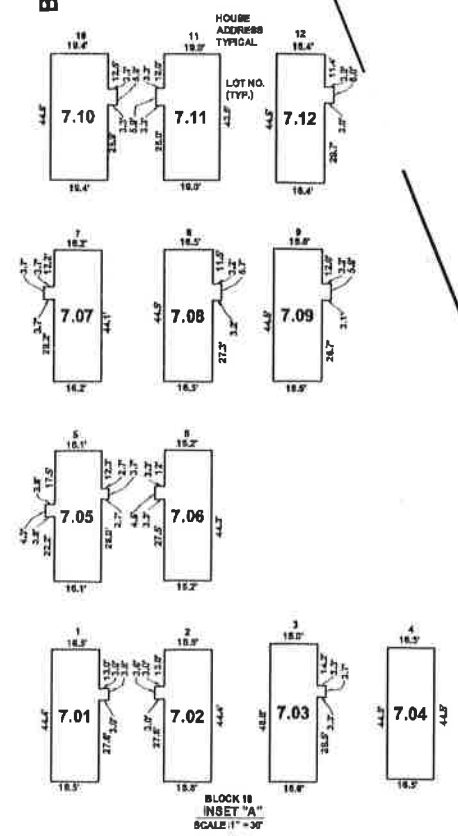
SHEET 3



BOROUGH OF HOPATCONG
SUSSEX COUNTY

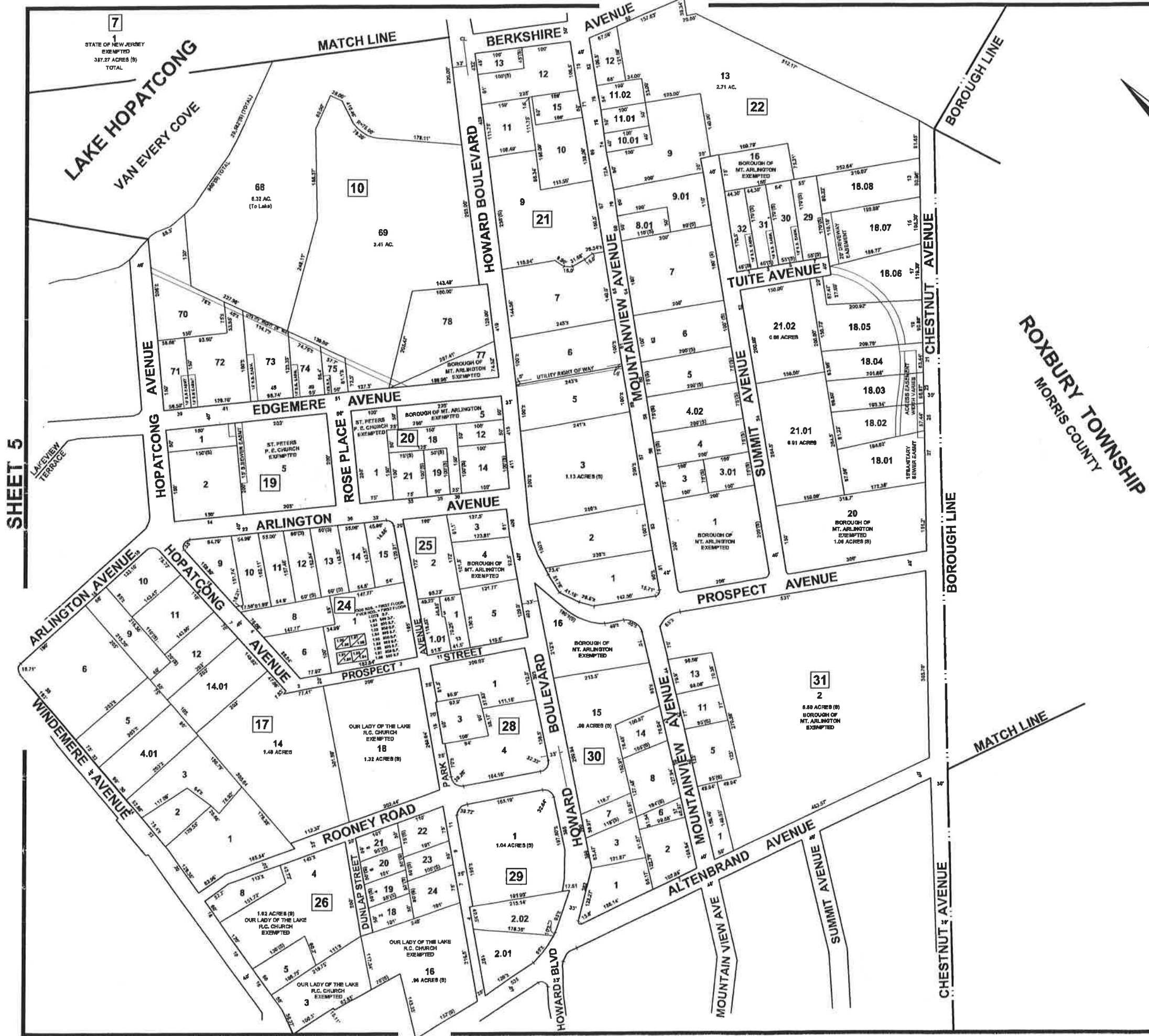
MORRIS COUNTY

LAKE HOPATCONG
MORRIS COUNTY

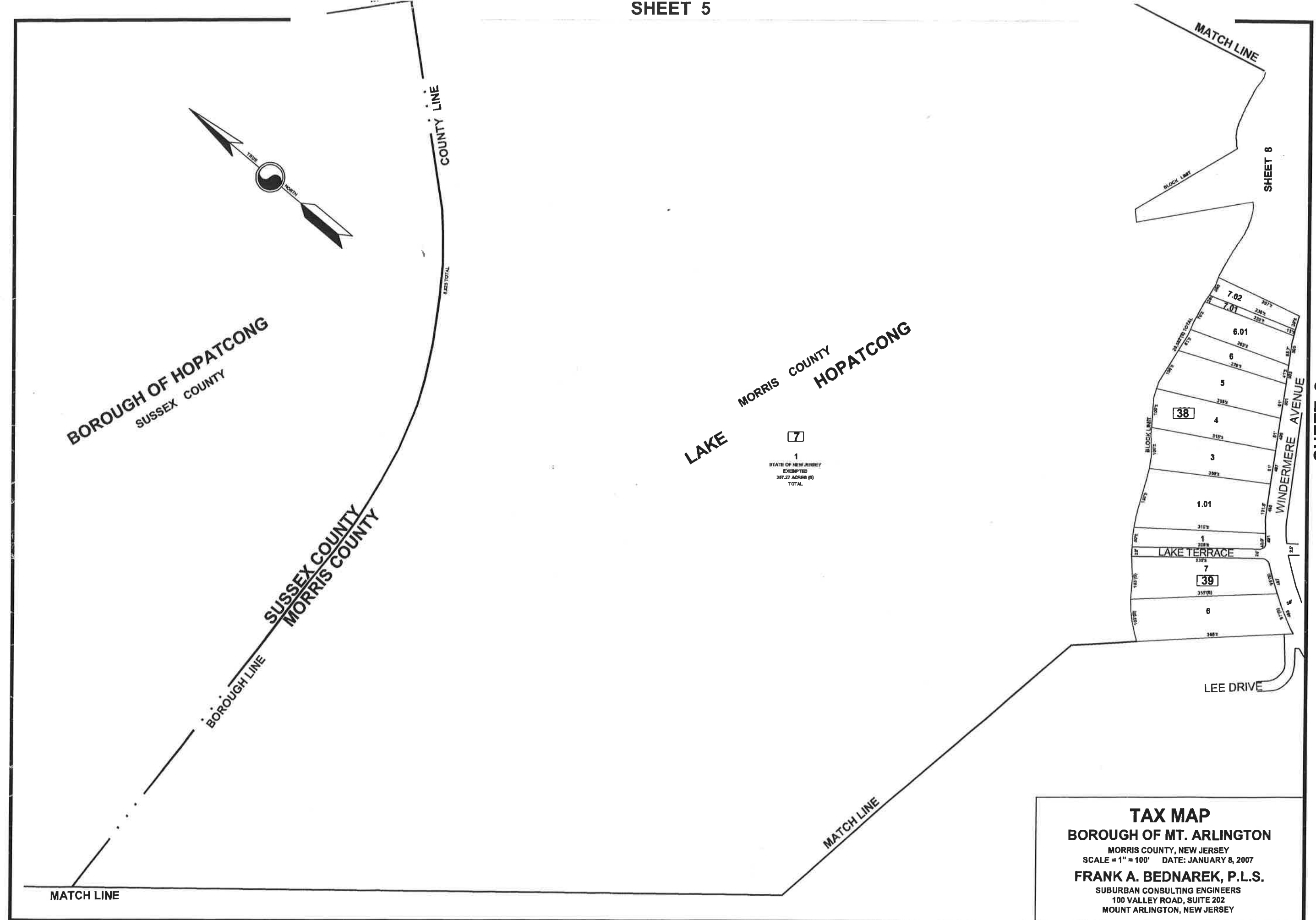


7
1
STATE OF NEW JERSEY
EXEMPTED
357.27 ACRES (8)
TOTAL

TAX MAP
BOROUGH OF MT. ARLINGTON
 MORRIS COUNTY, NEW JERSEY
 SCALE = 1" = 100' DATE: JANUARY 8, 2007
FRANK A. BEDNAREK, P.L.S.
 SUBURBAN CONSULTING ENGINEERS
 100 VALLEY ROAD, SUITE 202
 MOUNT ARLINGTON, NEW JERSEY



SHEET 5



BOROUGH OF HOPATCONG
SUSSEX COUNTY

SUSSEX COUNTY
MORRIS COUNTY

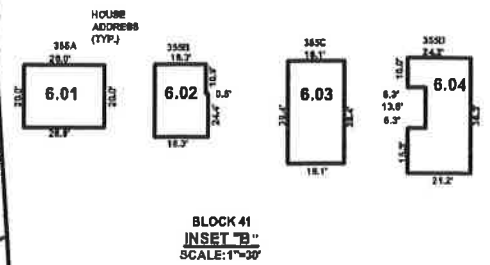
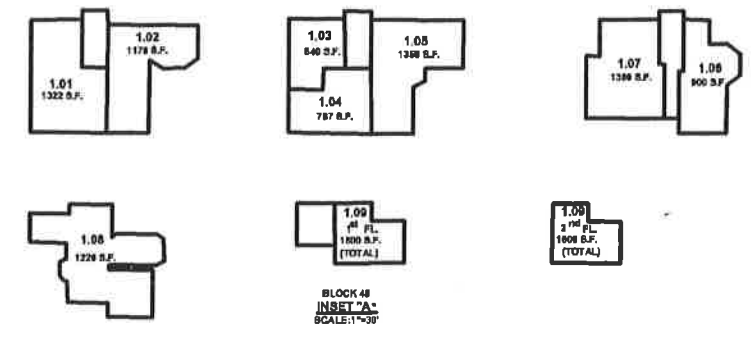
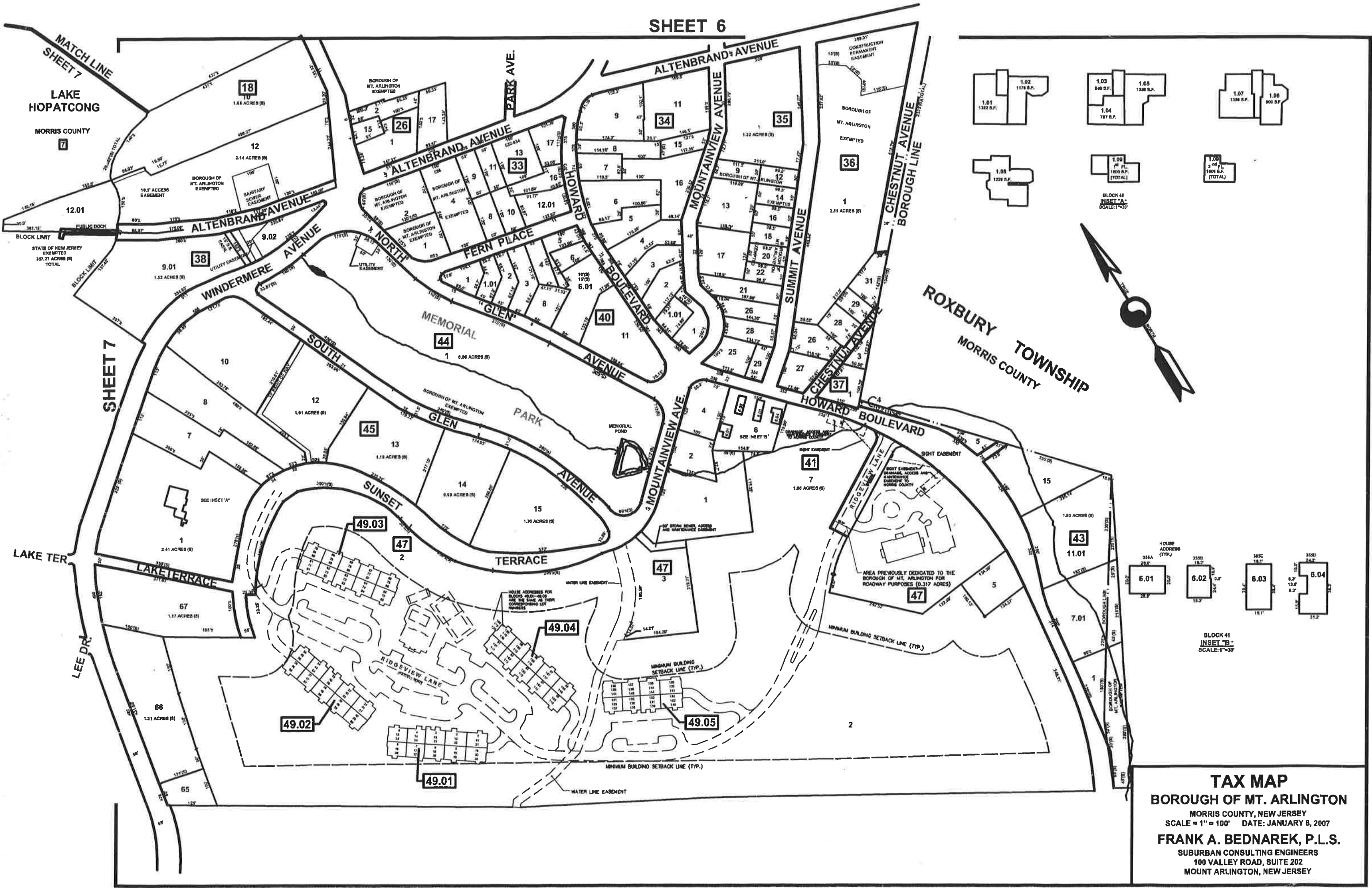
LAKE MORRIS COUNTY
HOPATCONG

7
1
STATE OF NEW JERSEY
EXEMPTED
187.27 ACRES (±)
TOTAL

TAX MAP
BOROUGH OF MT. ARLINGTON
MORRIS COUNTY, NEW JERSEY
SCALE = 1" = 100' DATE: JANUARY 8, 2007
FRANK A. BEDNAREK, P.L.S.
SUBURBAN CONSULTING ENGINEERS
100 VALLEY ROAD, SUITE 202
MOUNT ARLINGTON, NEW JERSEY

SHEET 8

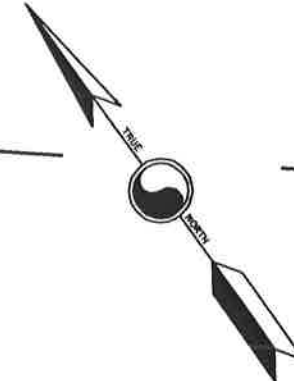
SHEET 8



TAX MAP
BOROUGH OF MT. ARLINGTON
 MORRIS COUNTY, NEW JERSEY
 SCALE = 1" = 100' DATE: JANUARY 8, 2007
FRANK A. BEDNAREK, P.L.S.
 SUBURBAN CONSULTING ENGINEERS
 100 VALLEY ROAD, SUITE 202
 MOUNT ARLINGTON, NEW JERSEY

MATCH LINE

MATCH LINE



SUSSEX COUNTY
MORRIS COUNTY

MATCH LINE

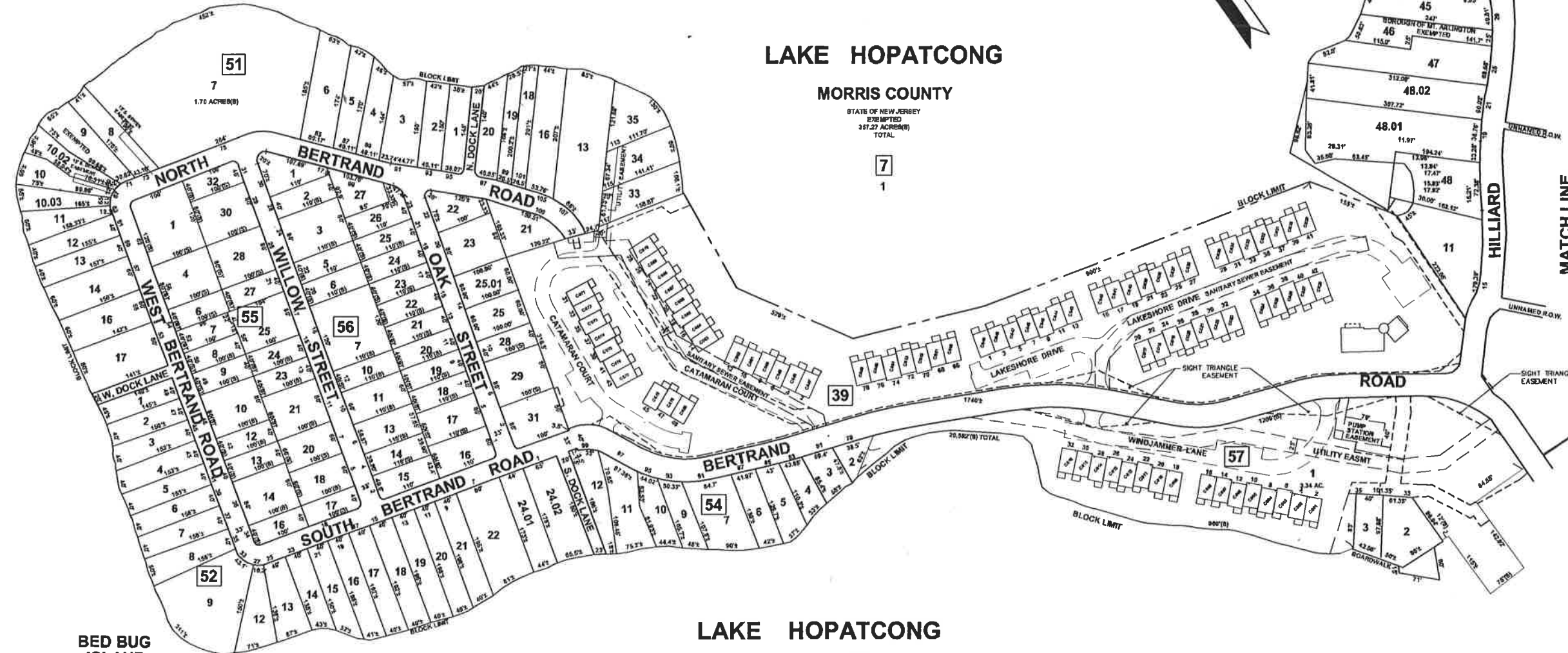
LAKE HOPATCONG

MORRIS COUNTY

STATE OF NEW JERSEY
EXEMPTED
337.27 ACRES(S)
TOTAL

7

1



BED BUG ISLAND



53

LAKE HOPATCONG

MORRIS COUNTY

STATE OF NEW JERSEY
EXEMPTED
337.27 ACRES(S)
TOTAL

7

1

BOROUGH LINE

BOROUGH LINE

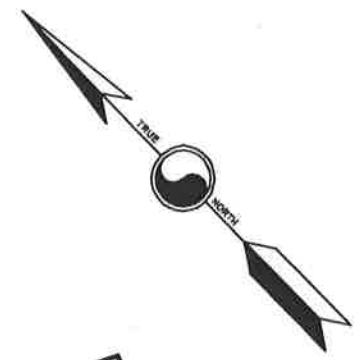
SUSSEX COUNTY
BOROUGH OF HOPATCONG

ROXBURY TOWNSHIP
MORRIS COUNTY

SHEET 11

RE: BLOCK 38 LOTS 48,4801 & 48,02
BLOCK 37 LOT 2 & BLOCK 7 LOT 1
THE OVERLAPPING LINES & DIMENSIONS SHOWN ARE PLOTTED IN
ACCORDANCE WITH THE METES & BOUNDS DESCRIPTION APPEARING
IN THE LATEST RECORD FOR EACH PARCEL & DO NOT PURPORT
TO REPRESENT TITLE OR OWNERSHIP STATUS IN ANY MANNER, THESE
SITUATIONS ARE SUBJECT TO SOLUTION BY THE PROPERTY OWNERS CONCERNED.

TAX MAP
BOROUGH OF MT. ARLINGTON
 MORRIS COUNTY, NEW JERSEY
 SCALE = 1" = 100' DATE: JANUARY 8, 2007
FRANK A. BEDNAREK, P.L.S.
 SUBURBAN CONSULTING ENGINEERS
 100 VALLEY ROAD, SUITE 202
 MOUNT ARLINGTON, NEW JERSEY

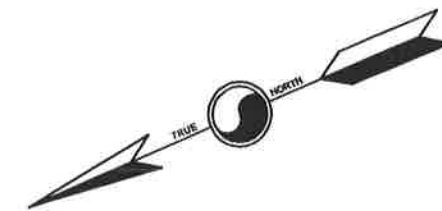


SHEET 11

TAX MAP
BOROUGH OF MT. ARLINGTON
 MORRIS COUNTY, NEW JERSEY
 SCALE = 1" = 100' DATE: JANUARY 8, 2007
FRANK A. BEDNAREK, P.L.S.
 SUBURBAN CONSULTING ENGINEERS
 100 VALLEY ROAD, SUITE 202
 MOUNT ARLINGTON, NEW JERSEY

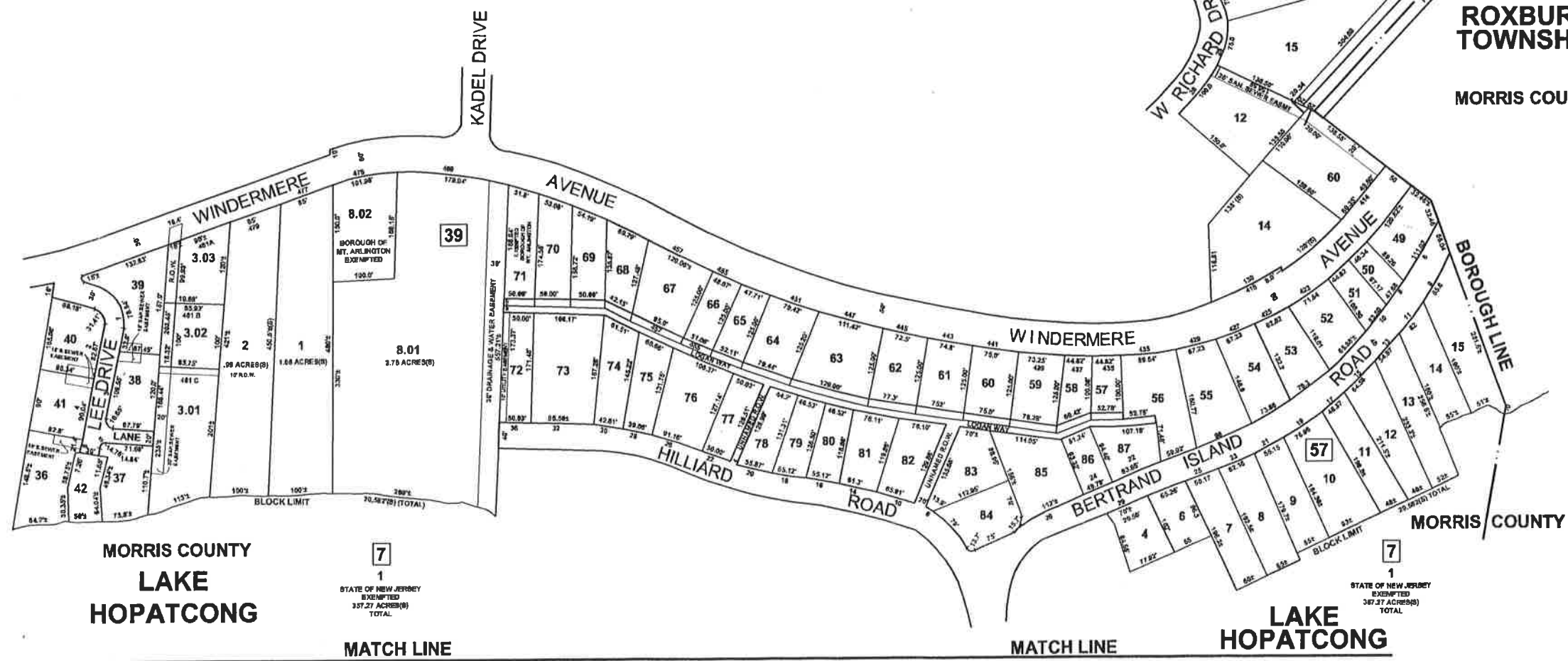
SHEET 11

SHEET 12



SEE SHEET 10

SHEET 7



MORRIS COUNTY
LAKE
HOPATCONG

7
1
STATE OF NEW JERSEY
EXEMPTED
337.27 ACRES(S)
TOTAL

MATCH LINE

MATCH LINE

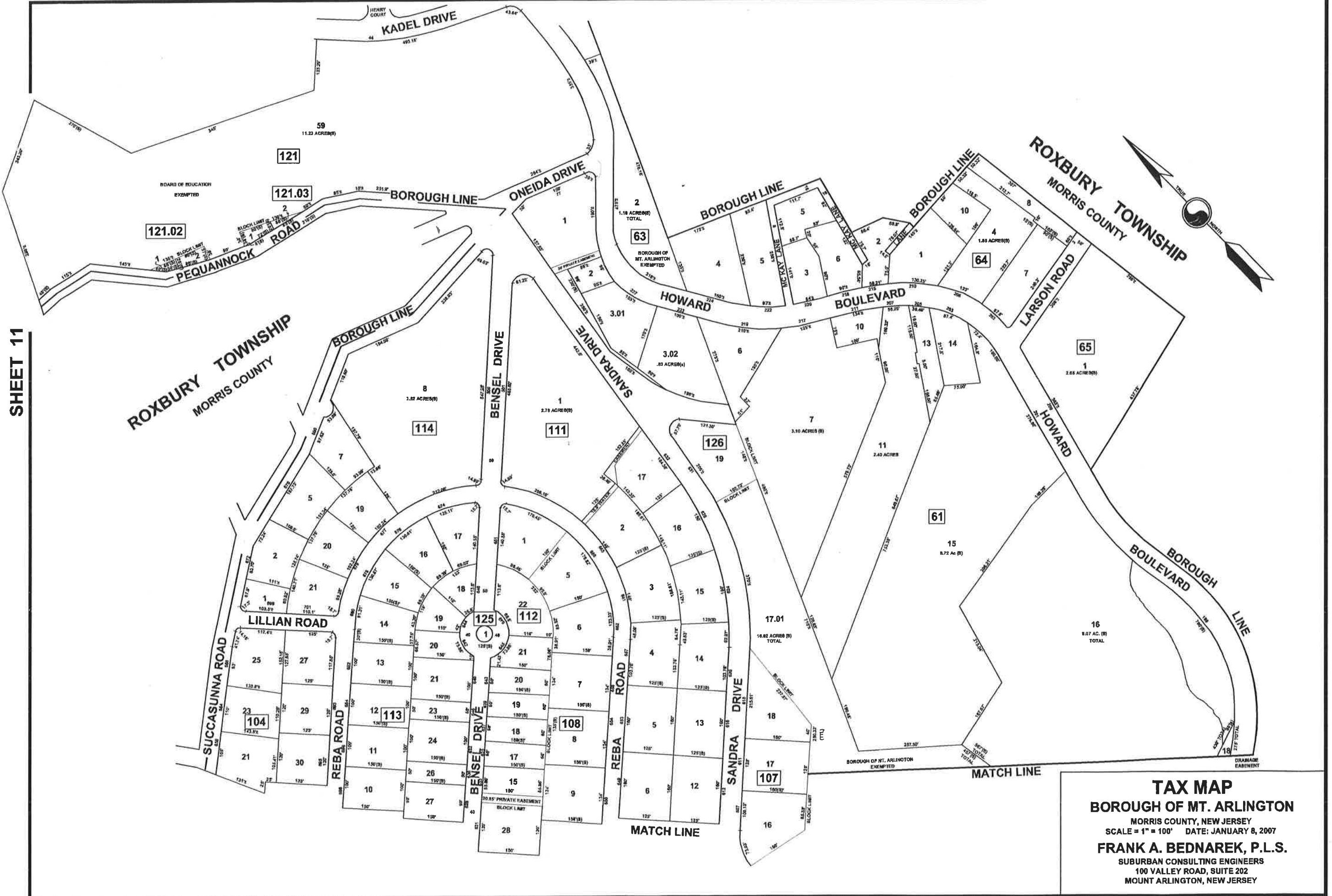
LAKE
HOPATCONG

7
1
STATE OF NEW JERSEY
EXEMPTED
347.37 ACRES(S)
TOTAL

ROXBURY
TOWNSHIP
MORRIS COUNTY

MORRIS COUNTY

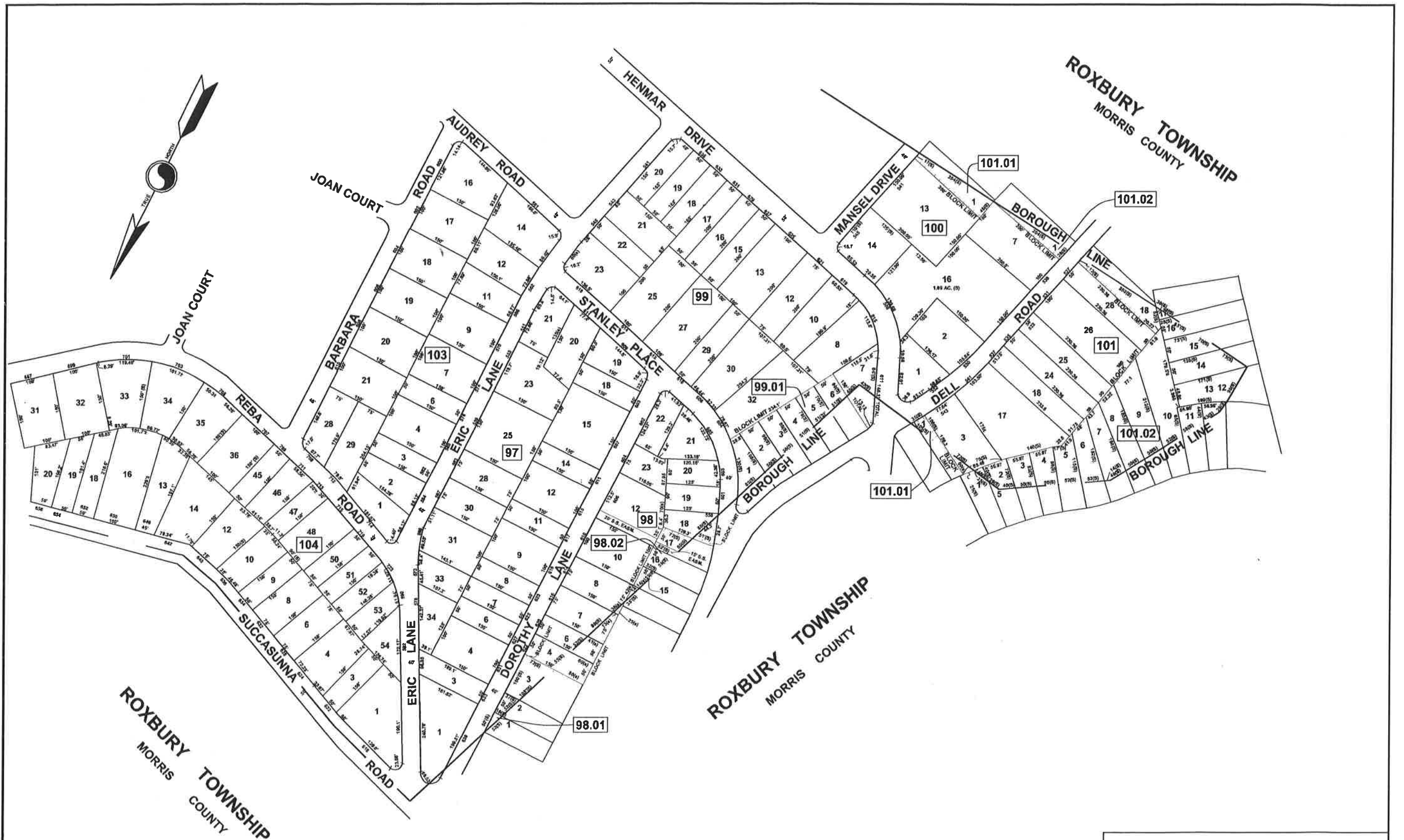
TAX MAP
BOROUGH OF MT. ARLINGTON
 MORRIS COUNTY, NEW JERSEY
 SCALE = 1" = 100' DATE: JANUARY 8, 2007
FRANK A. BEDNAREK, P.L.S.
 SUBURBAN CONSULTING ENGINEERS
 100 VALLEY ROAD, SUITE 202
 MOUNT ARLINGTON, NEW JERSEY



SHEET 11

ROXBURY TOWNSHIP
MORRIS COUNTY

TAX MAP
BOROUGH OF MT. ARLINGTON
 MORRIS COUNTY, NEW JERSEY
 SCALE = 1" = 100' DATE: JANUARY 8, 2007
FRANK A. BEDNAREK, P.L.S.
 SUBURBAN CONSULTING ENGINEERS
 100 VALLEY ROAD, SUITE 202
 MOUNT ARLINGTON, NEW JERSEY



TAX MAP
BOROUGH OF MT. ARLINGTON
 MORRIS COUNTY, NEW JERSEY
 SCALE = 1" = 100' DATE: JANUARY 8, 2007
FRANK A. BEDNAREK, P.L.S.
 SUBURBAN CONSULTING ENGINEERS
 100 VALLEY ROAD, SUITE 202
 MOUNT ARLINGTON, NEW JERSEY

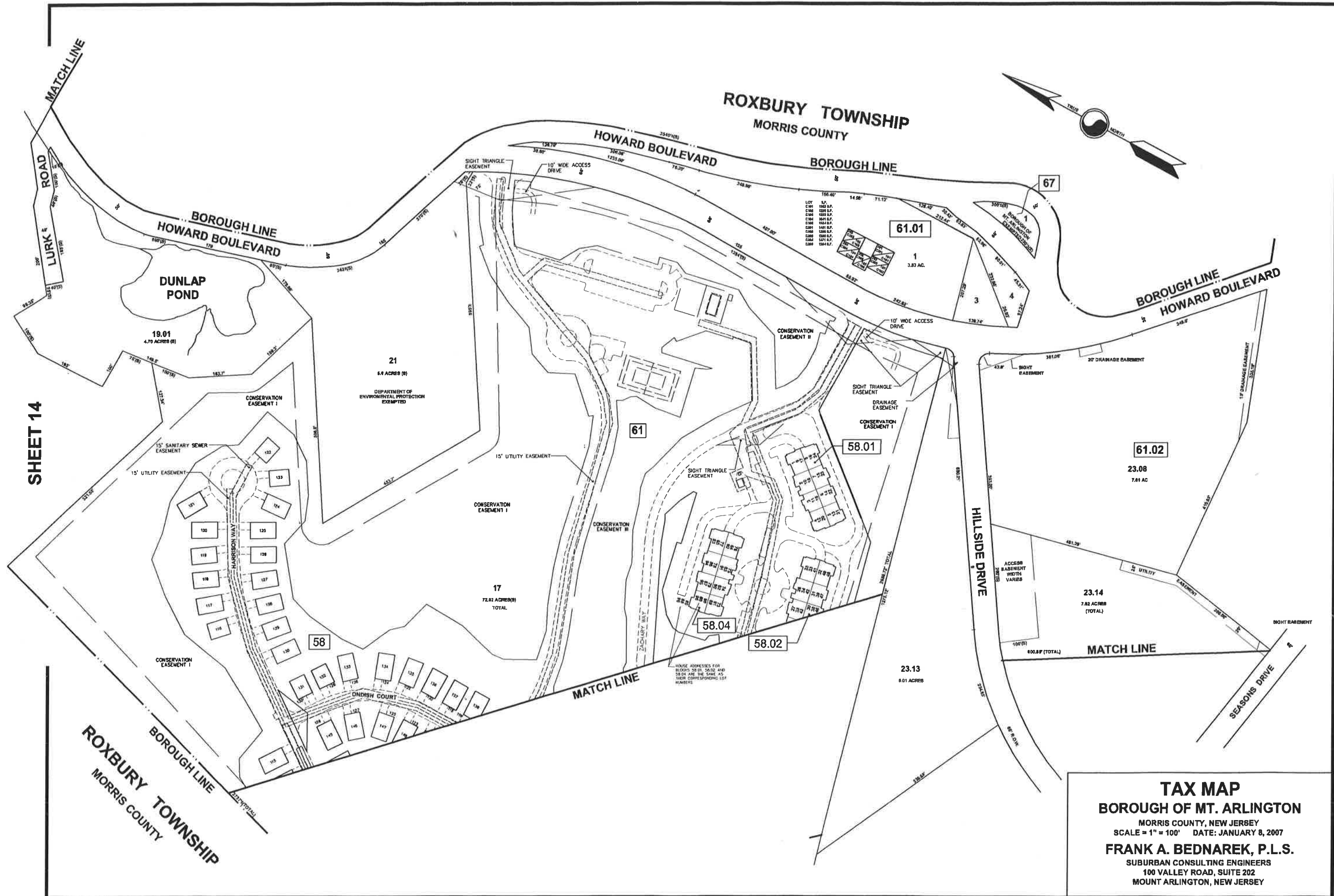


16
8.72 ACRES
TOTAL

17.01
16.82 ACRES (B)
TOTAL
BOROUGH OF MT. ARLINGTON
EXEMPTED

61

TAX MAP
BOROUGH OF MT. ARLINGTON
 MORRIS COUNTY, NEW JERSEY
 SCALE = 1" = 100' DATE: JANUARY 8, 2007
FRANK A. BEDNAREK, P.L.S.
 SUBURBAN CONSULTING ENGINEERS
 100 VALLEY ROAD, SUITE 202
 MOUNT ARLINGTON, NEW JERSEY



TAX MAP
BOROUGH OF MT. ARLINGTON
 MORRIS COUNTY, NEW JERSEY
 SCALE = 1" = 100' DATE: JANUARY 8, 2007
FRANK A. BEDNAREK, P.L.S.
 SUBURBAN CONSULTING ENGINEERS
 100 VALLEY ROAD, SUITE 202
 MOUNT ARLINGTON, NEW JERSEY

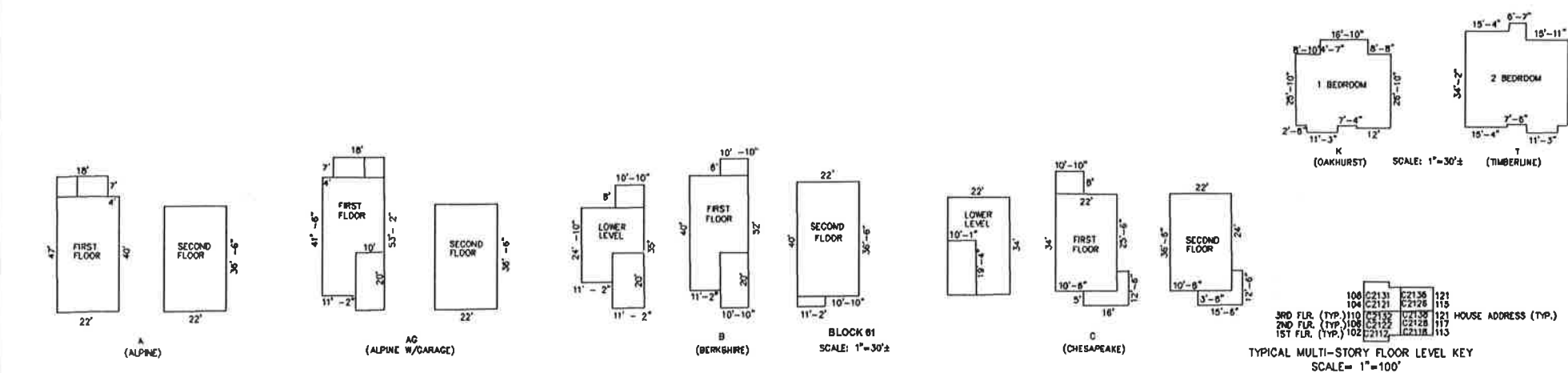
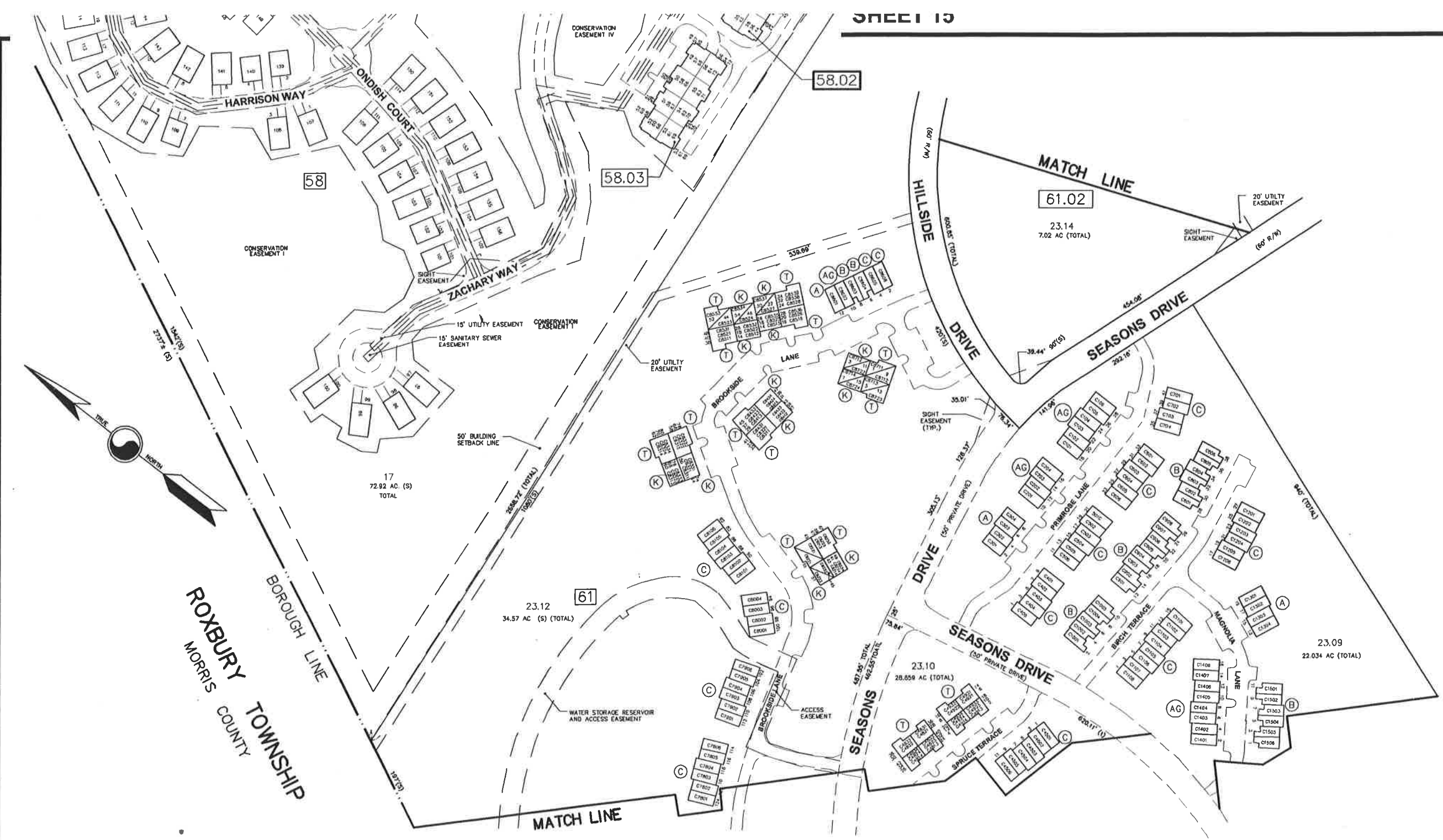
SHEET 14

SHEET 17

SHEET 16

SHEET 16

15

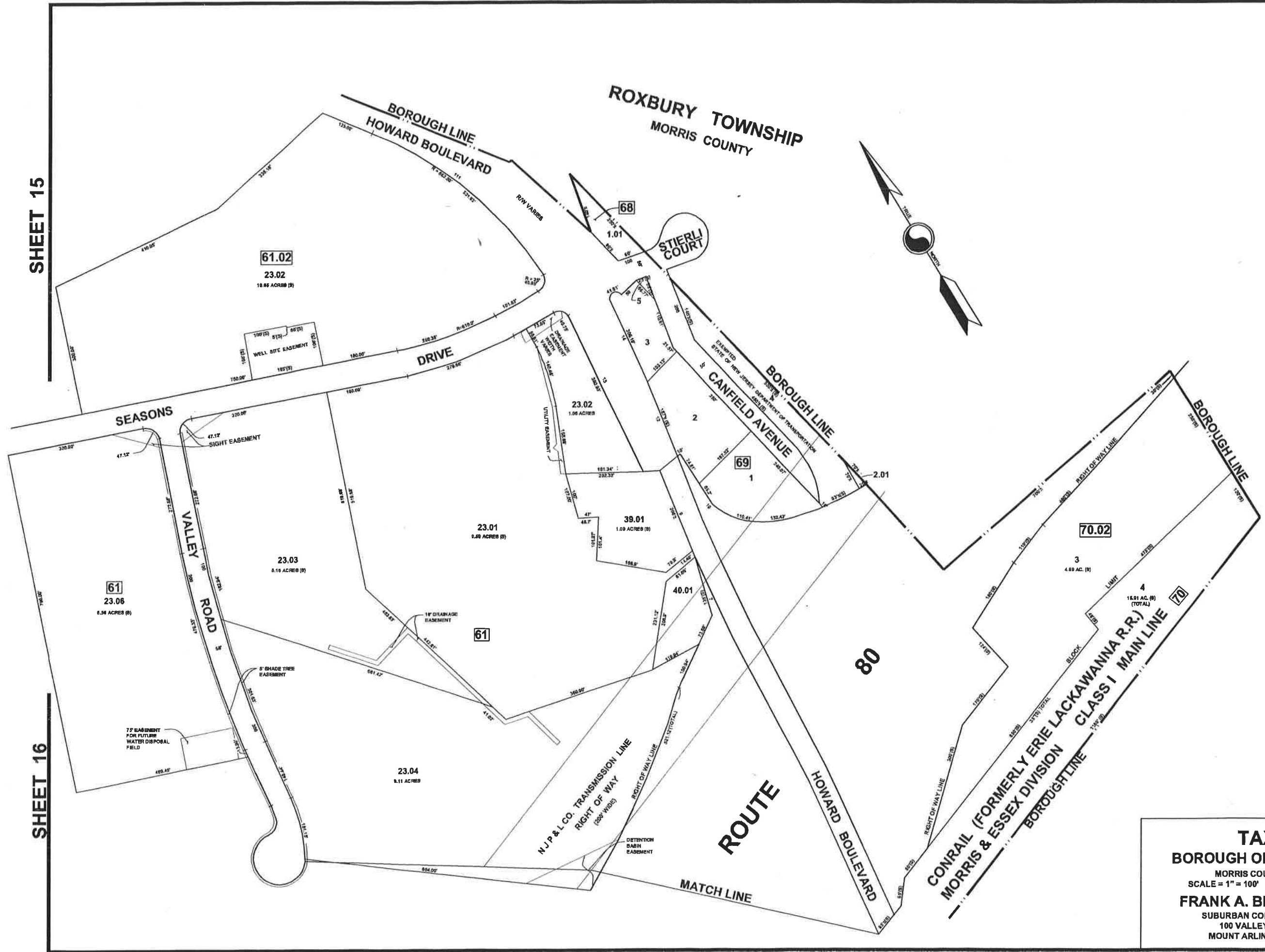
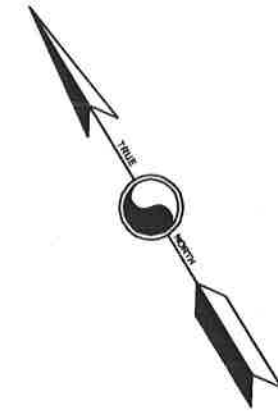


TAX MAP
BOROUGH OF MT. ARLINGTON
 MORRIS COUNTY, NEW JERSEY
 SCALE = 1" = 100' DATE: JANUARY 8, 2007
FRANK A. BEDNAREK, P.L.S.
 SUBURBAN CONSULTING ENGINEERS
 100 VALLEY ROAD, SUITE 202
 MOUNT ARLINGTON, NEW JERSEY

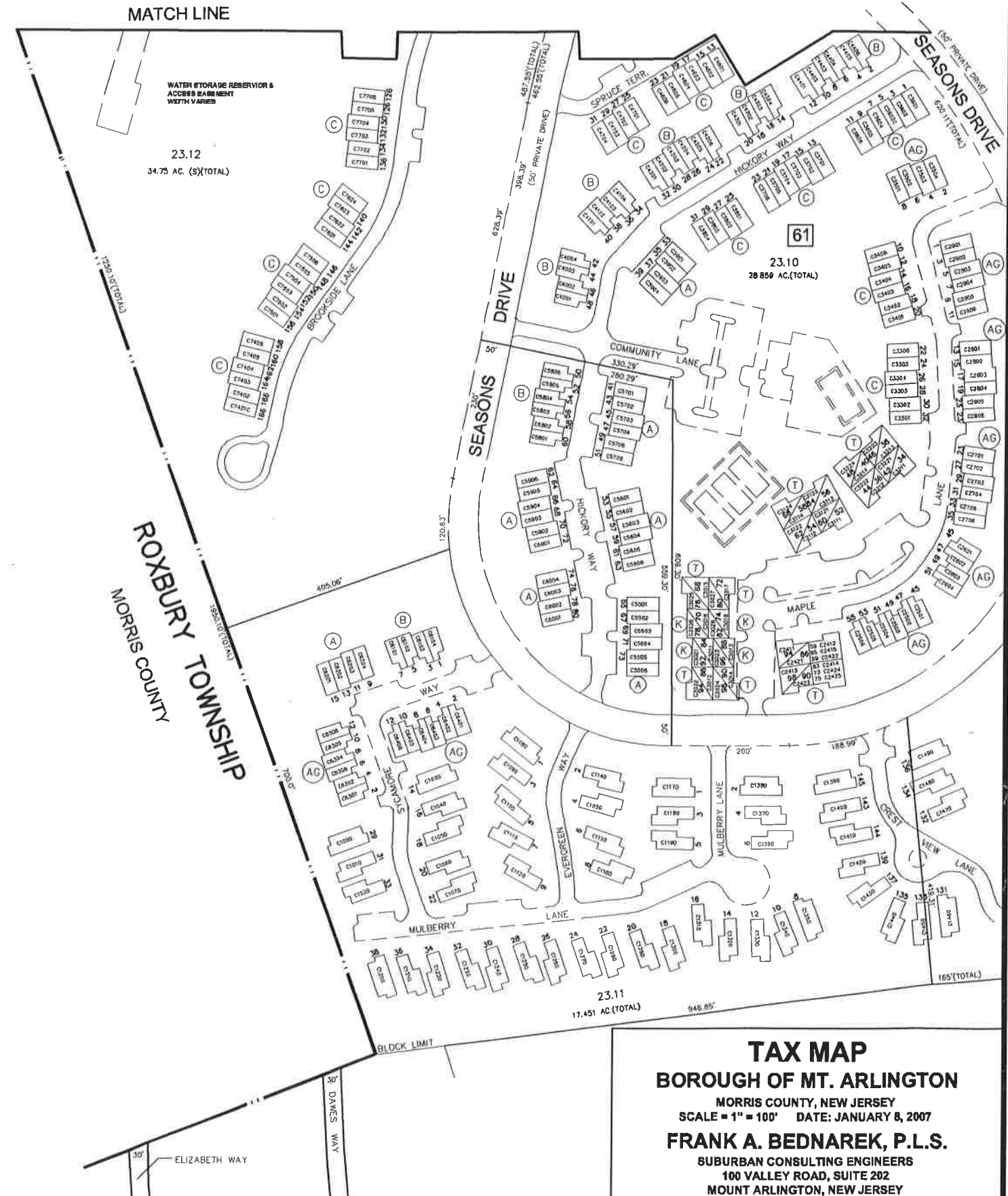
SHEET 15

SHEET 16

ROXBURY TOWNSHIP
MORRIS COUNTY



TAX MAP
BOROUGH OF MT. ARLINGTON
 MORRIS COUNTY, NEW JERSEY
 SCALE = 1" = 100' DATE: JANUARY 8, 2007
FRANK A. BEDNAREK, P.L.S.
 SUBURBAN CONSULTING ENGINEERS
 100 VALLEY ROAD, SUITE 202
 MOUNT ARLINGTON, NEW JERSEY



SHEET 19

MATCH LINE

- LEGEND**
(MODELS)
- (A) - (ALPINE)
 - (AG) - (ALPINE W/GARAGE)
 - (B) - (BERKSHIRE)
 - (C) - (CHESAPEAKE)
 - (K) - (OAKHURST)
 - (T) - (TIMBERLINE)

NOTE: SEE SHEET 16 FOR MODEL DETAILS.

TYPICAL MULTI-STORY FLOOR LEVEL KEY
SCALE = 1" = 100'

100	2131	2136	121
104	2121	2119	115
3RD FLR (TYP.)	110	2132	121
2ND FLR (TYP.)	108	2122	117
1ST FLR (TYP.)	107	2112	113

HOUSE ADDRESS (TYP.)

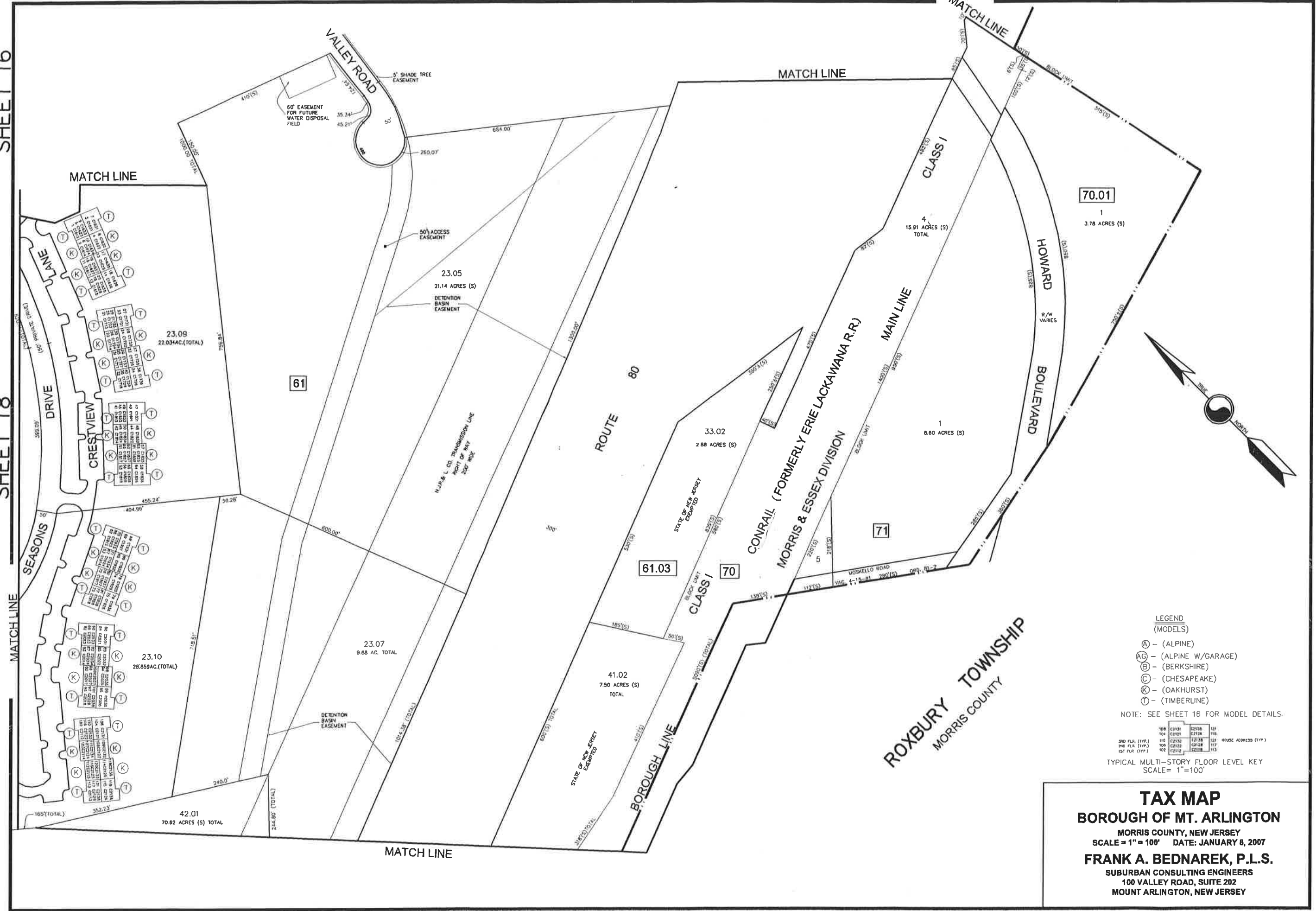
LEGEND FOR SINGLE FAMILY UNITS BLOCK 61

LOT	S.F.	LOT	S.F.
C1000	2189	C1240	1980
C1010	2307	C1250	2159
C1020	1980	C1260	2307
C1030	2189	C1270	1980
C1040	2307	C1280	1980
C1050	1980	C1290	1980
C1060	2307	C1300	2307
C1070	1980	C1310	2189
C1080	1980	C1320	2307
C1090	2307	C1330	2307
C1100	2307	C1340	2307
C1110	1980	C1350	1980
C1120	1980	C1360	2307
C1130	2307	C1370	1980
C1140	2189	C1380	2189
C1150	1980	C1390	2189
C1160	2307	C1400	2307
C1170	2189	C1410	2307
C1180	2189	C1420	2307
C1190	1980	C1430	1980
C1200	2189	C1440	1980
C1210	2189	C1450	1980
C1220	2307	C1460	1980
C1230	1980	C1470	2189
C1480	2189	C1480	2307

TAX MAP
BOROUGH OF MT. ARLINGTON
 MORRIS COUNTY, NEW JERSEY
 SCALE = 1" = 100' DATE: JANUARY 8, 2007
FRANK A. BEDNAREK, P.L.S.
 SUBURBAN CONSULTING ENGINEERS
 100 VALLEY ROAD, SUITE 202
 MOUNT ARLINGTON, NEW JERSEY

SHEET 16

SHEET 18



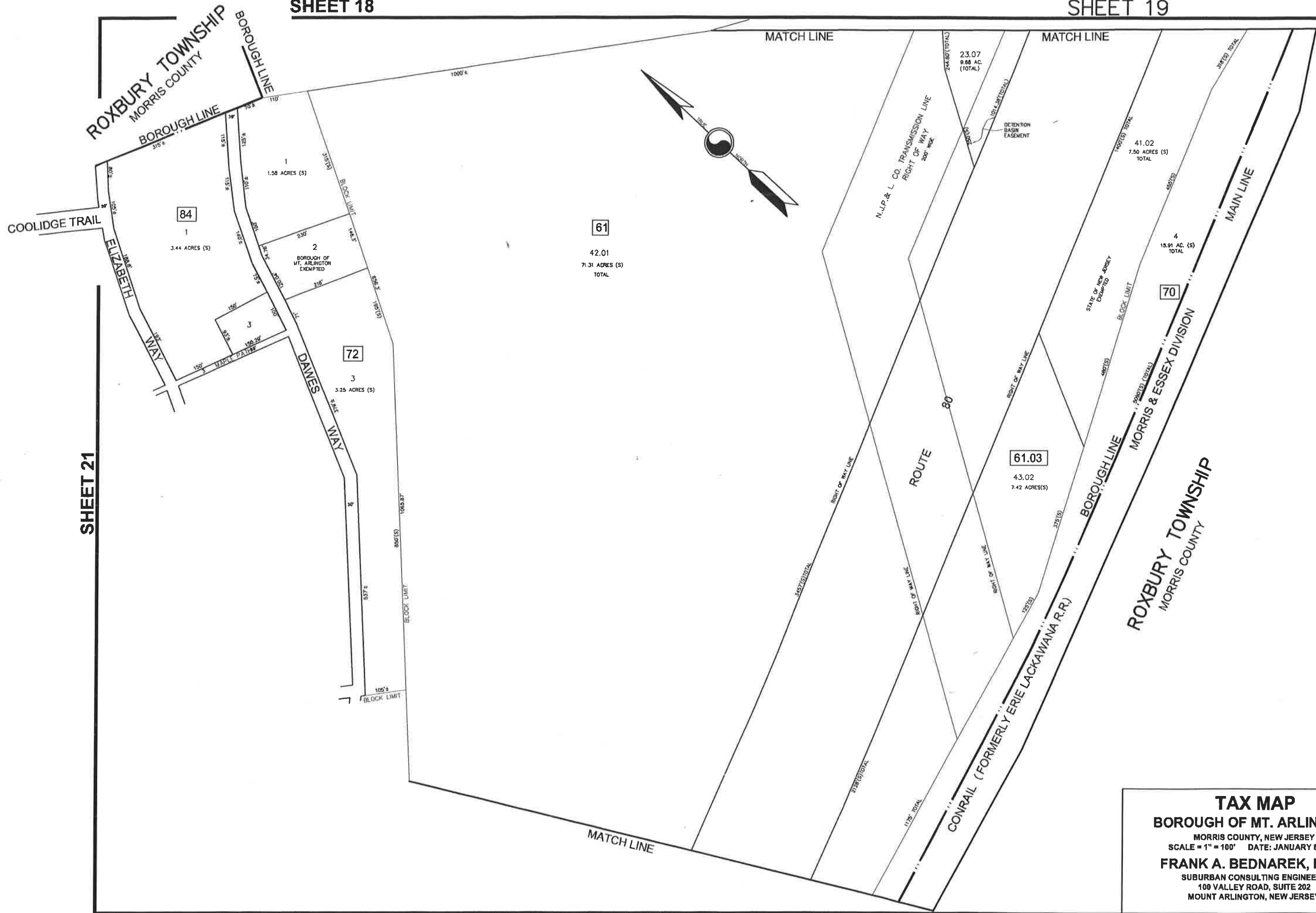
- LEGEND (MODELS)
- (A) - (ALPINE)
 - (AC) - (ALPINE W/GARAGE)
 - (B) - (BERKSHIRE)
 - (C) - (CHESAPEAKE)
 - (K) - (OAKHURST)
 - (T) - (TIMBERLINE)

NOTE: SEE SHEET 16 FOR MODEL DETAILS.

108	C2121	C2126	101
109	C2122	C2127	102
110	C2123	C2128	103
111	C2124	C2129	104
112	C2125	C2130	105

TYPICAL MULTI-STORY FLOOR LEVEL KEY
SCALE = 1"=100'

TAX MAP
BOROUGH OF MT. ARLINGTON
 MORRIS COUNTY, NEW JERSEY
 SCALE = 1" = 100' DATE: JANUARY 8, 2007
FRANK A. BEDNAREK, P.L.S.
 SUBURBAN CONSULTING ENGINEERS
 100 VALLEY ROAD, SUITE 202
 MOUNT ARLINGTON, NEW JERSEY

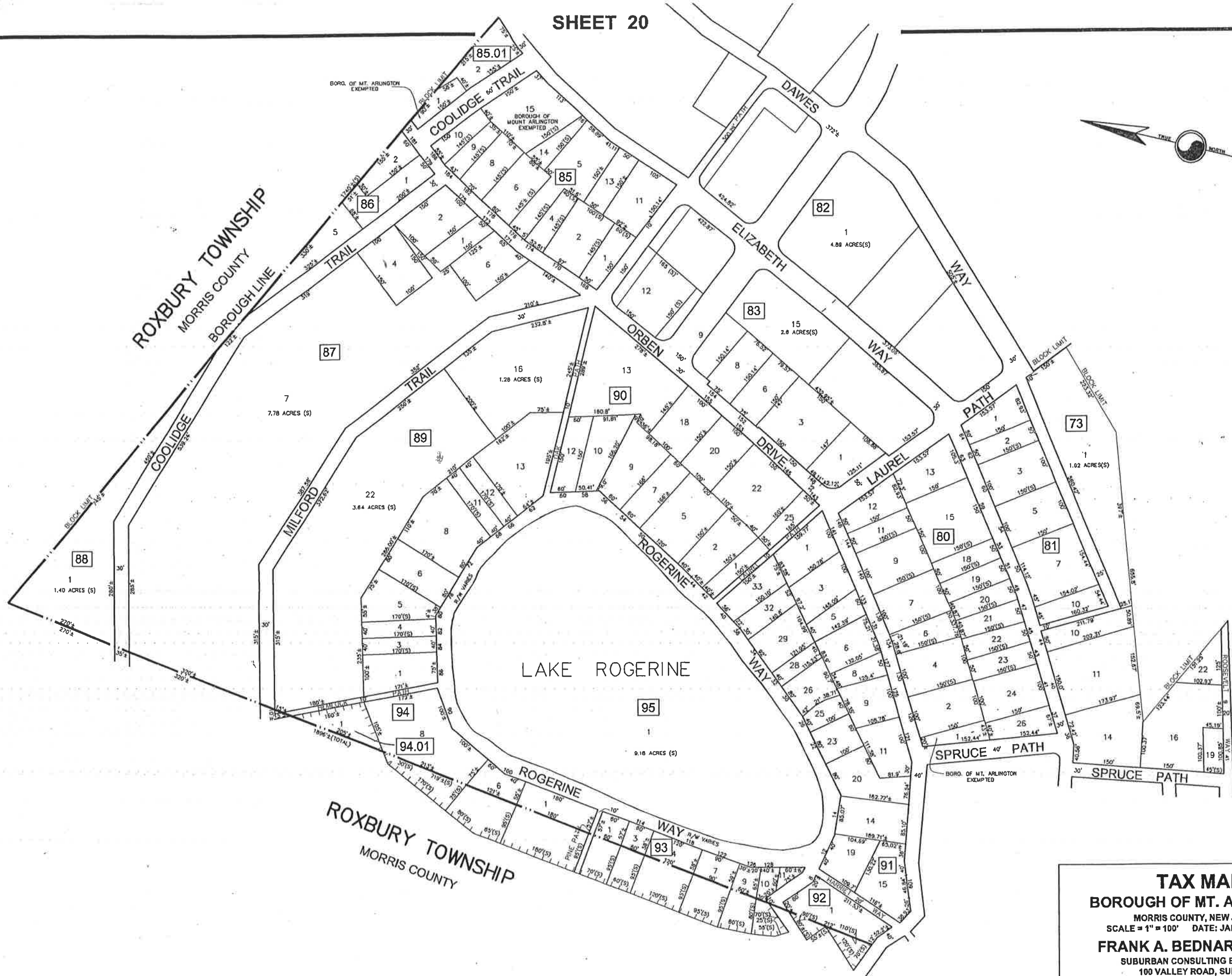


SHEET 21

SHEET 22

20

TAX MAP
BOROUGH OF MT. ARLINGTON
 MORRIS COUNTY, NEW JERSEY
 SCALE = 1" = 100' DATE: JANUARY 8, 2007
FRANK A. BEDNAREK, P.L.S.
 SUBURBAN CONSULTING ENGINEERS
 100 VALLEY ROAD, SUITE 202
 MOUNT ARLINGTON, NEW JERSEY



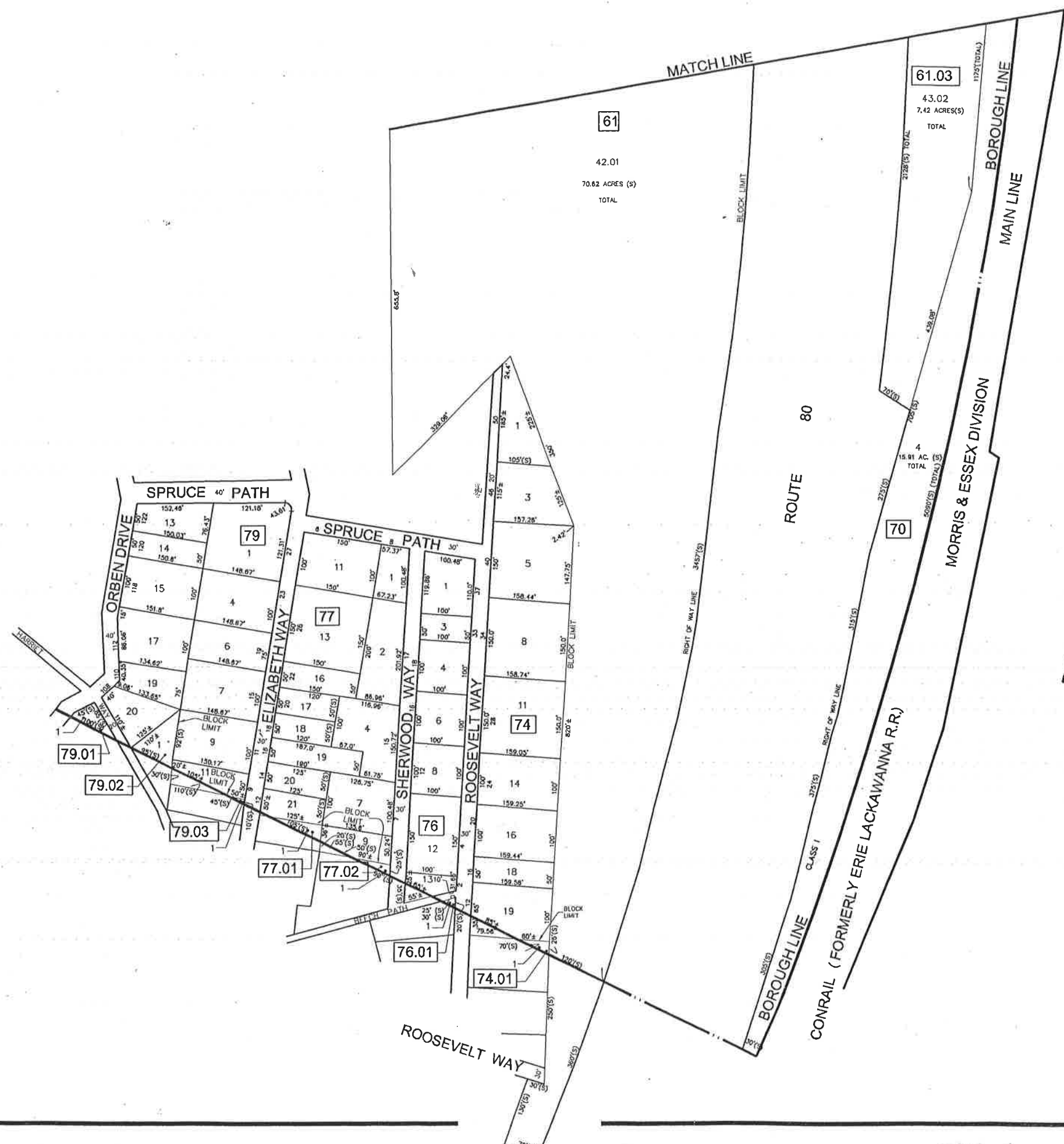
ROXBURY TOWNSHIP
MORRIS COUNTY

ROXBURY TOWNSHIP
MORRIS COUNTY

LAKE ROGERINE

TAX MAP
BOROUGH OF MT. ARLINGTON
 MORRIS COUNTY, NEW JERSEY
 SCALE = 1" = 100' DATE: JANUARY 8, 2007
FRANK A. BEDNAREK, P.L.S.
 SUBURBAN CONSULTING ENGINEERS
 100 VALLEY ROAD, SUITE 202
 MOUNT ARLINGTON, NEW JERSEY

SHEET 21



ROXBURY TOWNSHIP
MORRIS COUNTY

TAX MAP
BOROUGH OF MT. ARLINGTON
 MORRIS COUNTY, NEW JERSEY
 SCALE = 1" = 100' DATE: JANUARY 8, 2007
FRANK A. BEDNAREK, P.L.S.
 SUBURBAN CONSULTING ENGINEERS
 100 VALLEY ROAD, SUITE 202
 MOUNT ARLINGTON, NEW JERSEY