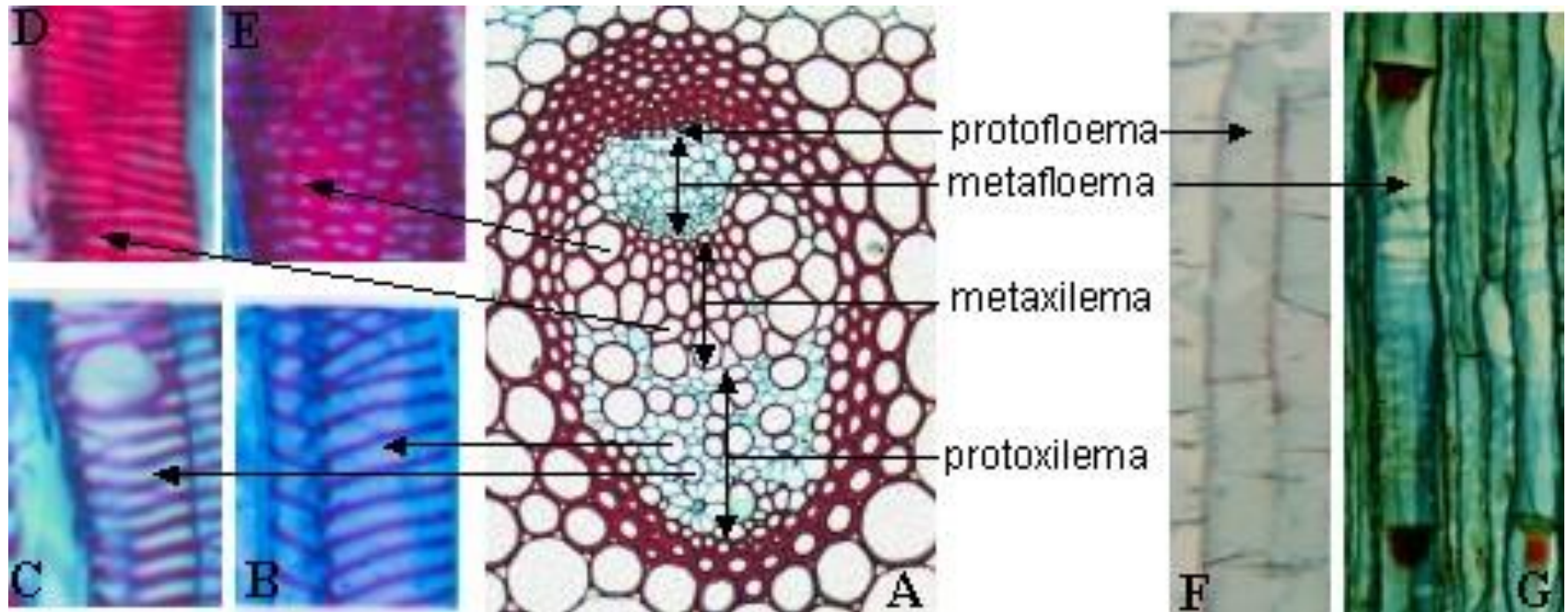
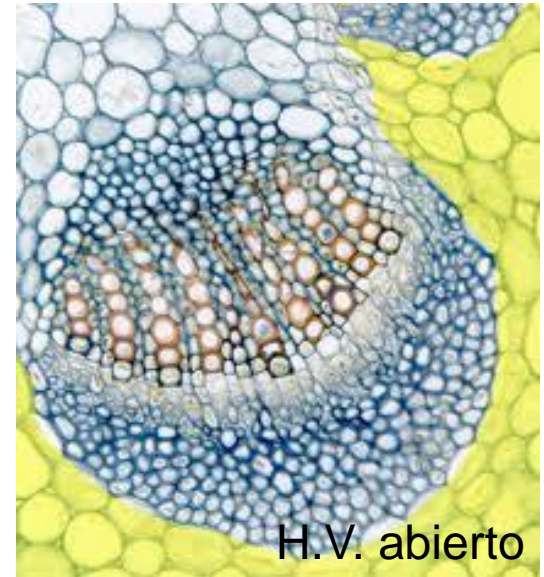
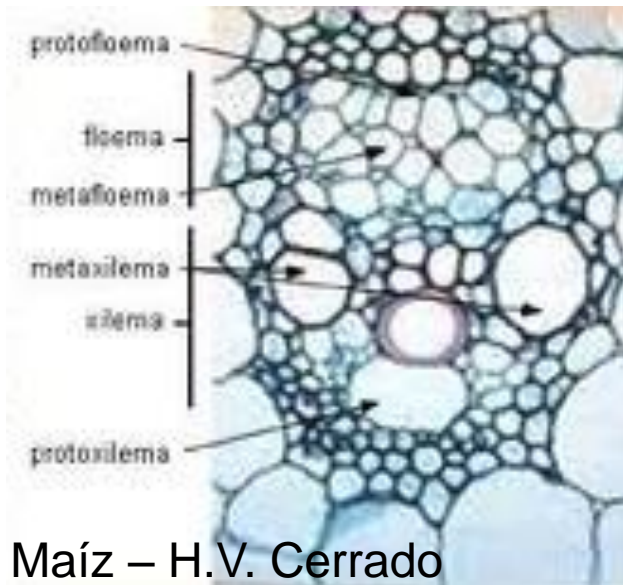


Xilema primario y floema primario

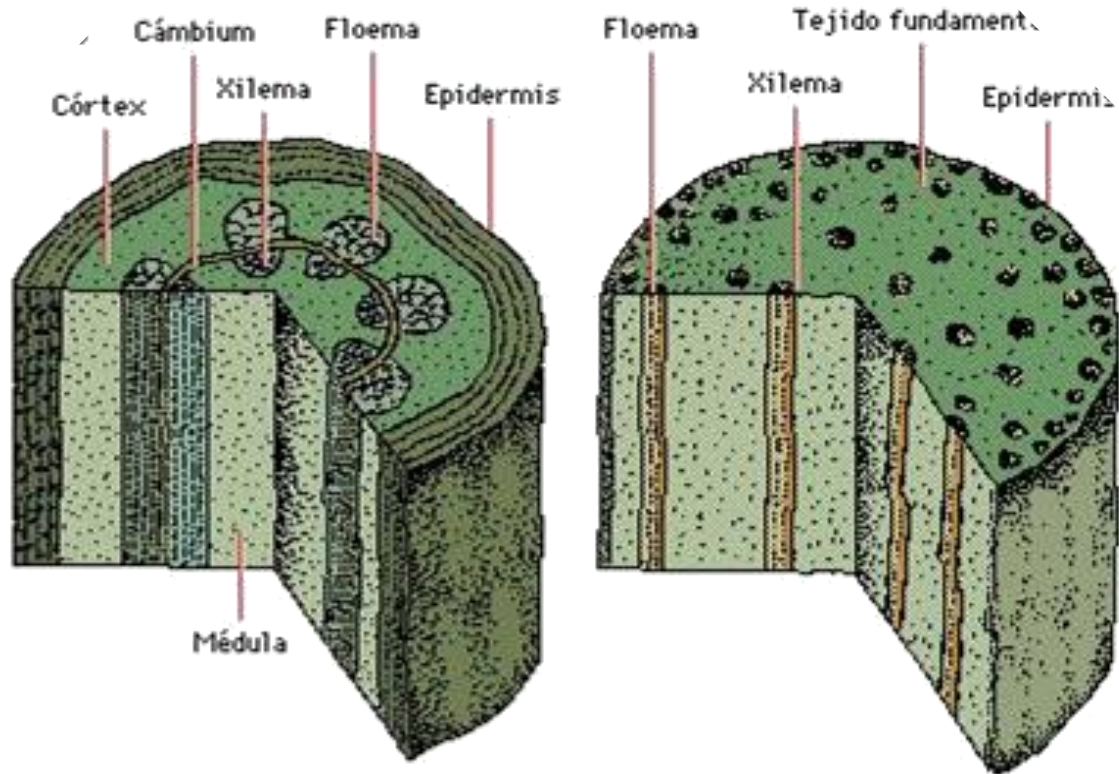


<http://www.biologia.edu.ar/botanica/tema17/images17/protometa.jpg>

Haces vasculares



Estelas



Tallo de herbácea
dicotiledónea

eustela

Tallo de herbácea
monocotiledónea

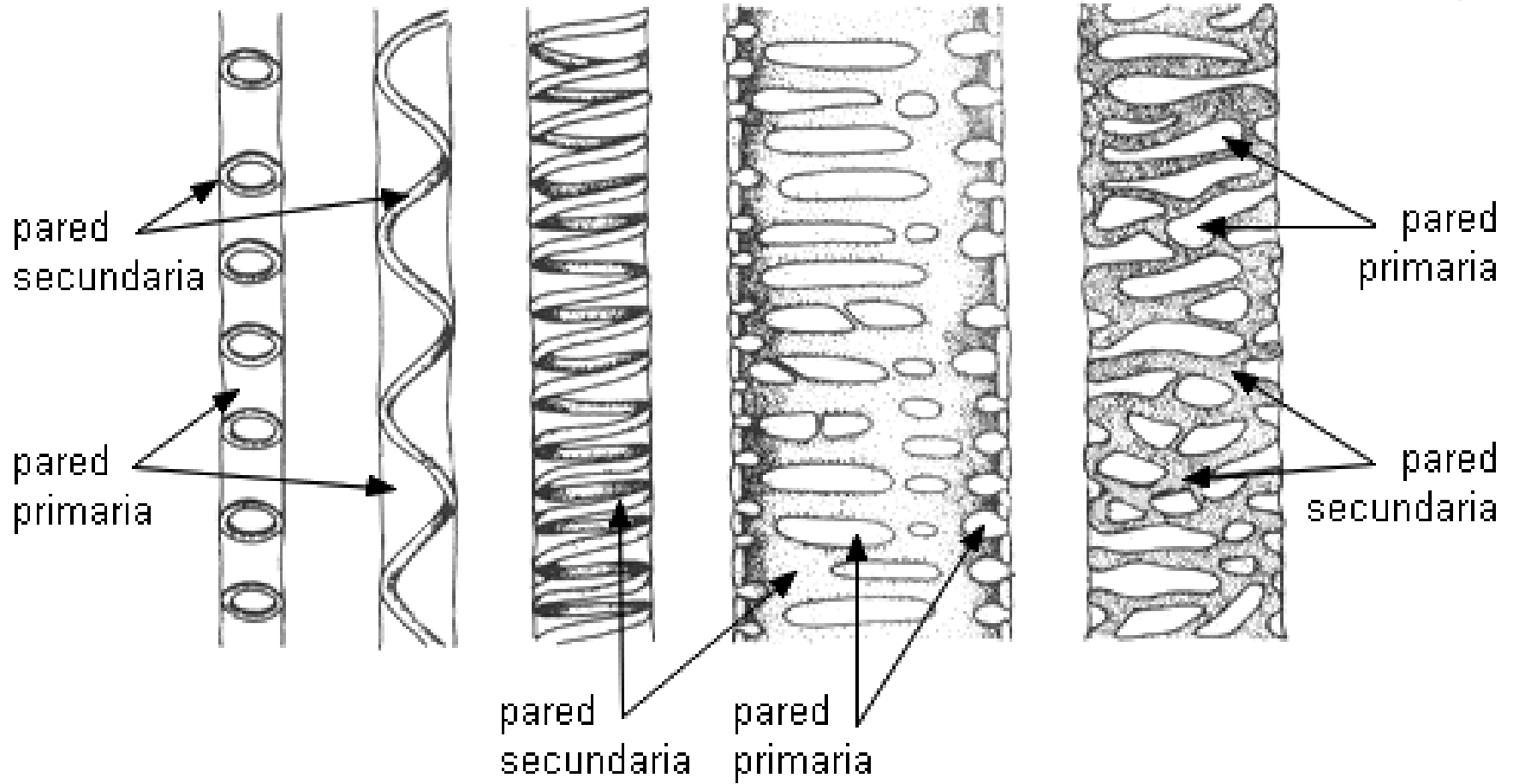
atactostela

Anular

Helicoidal o Espiral

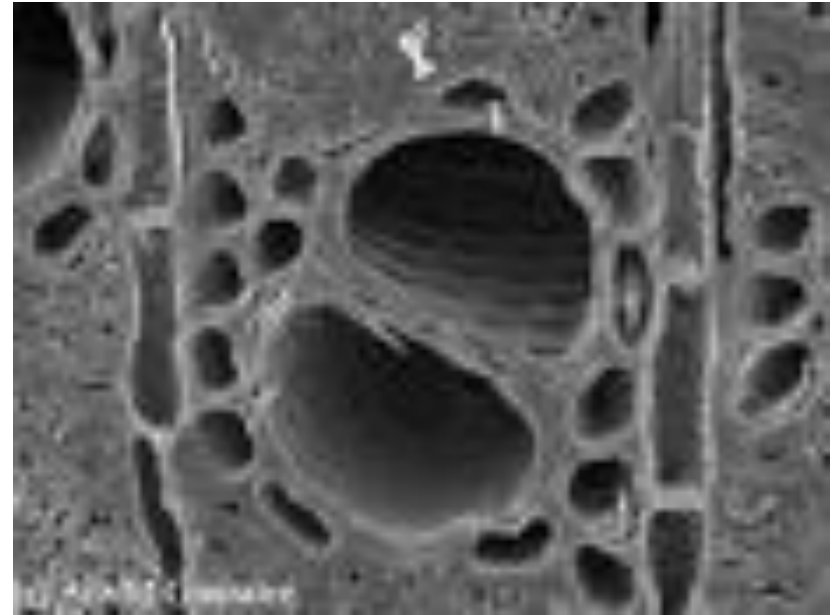
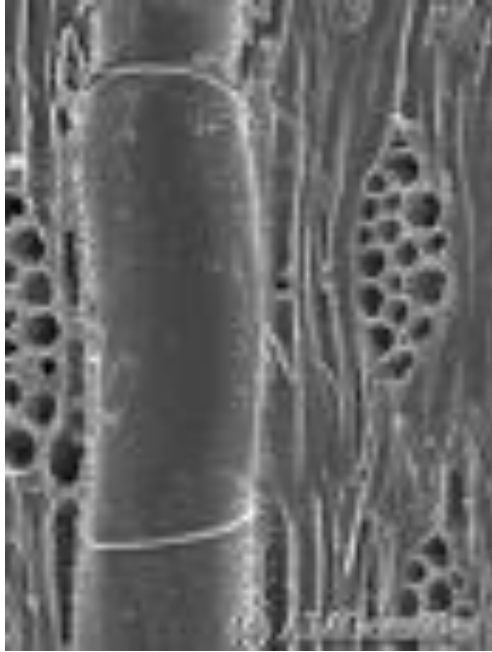
Escalariforme

Reticular



<http://biogeo2.edumoot.com/file.php/2/Xilema.html>

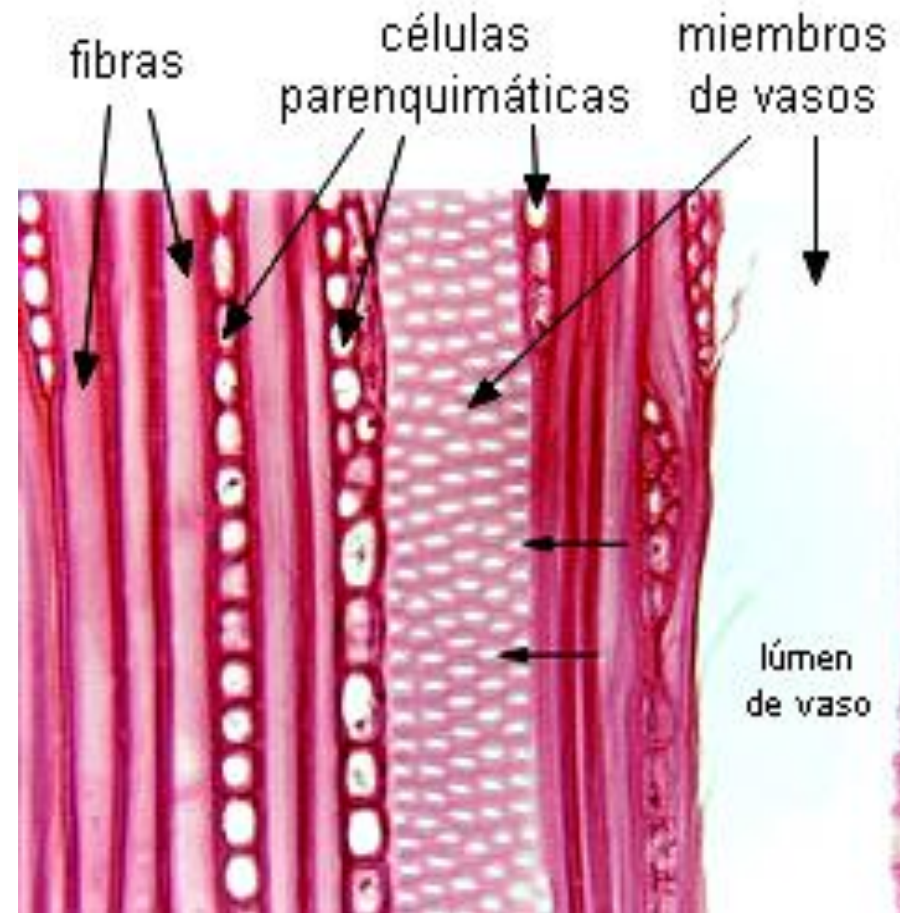
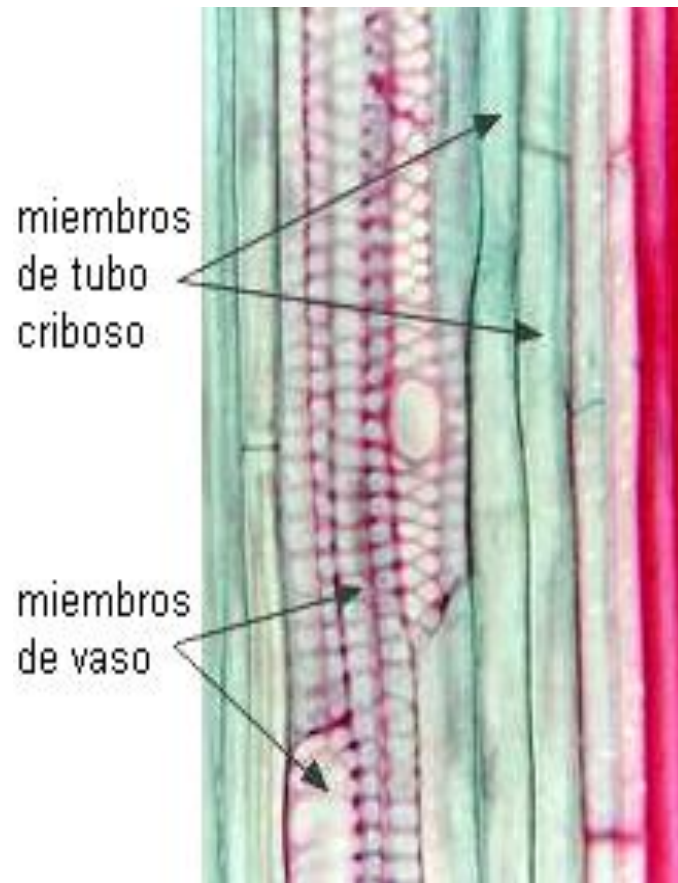
Xilema



VASOS DE XILEMA

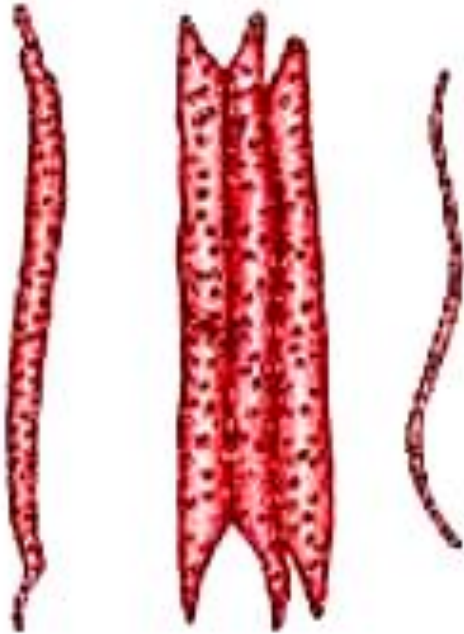
Tejidos conductores en corte longitudinal de tallo

Corte longitudinal tangencial de xilema

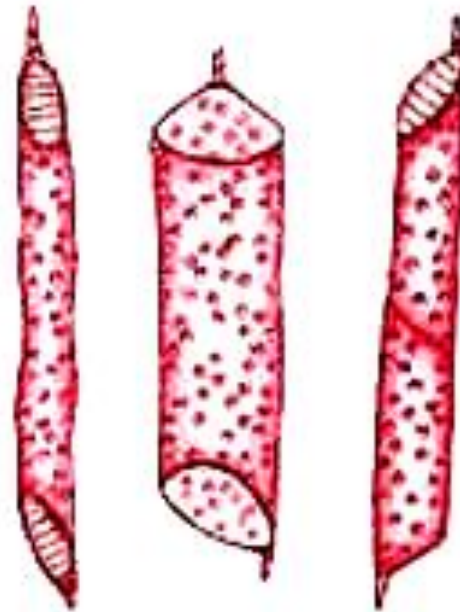


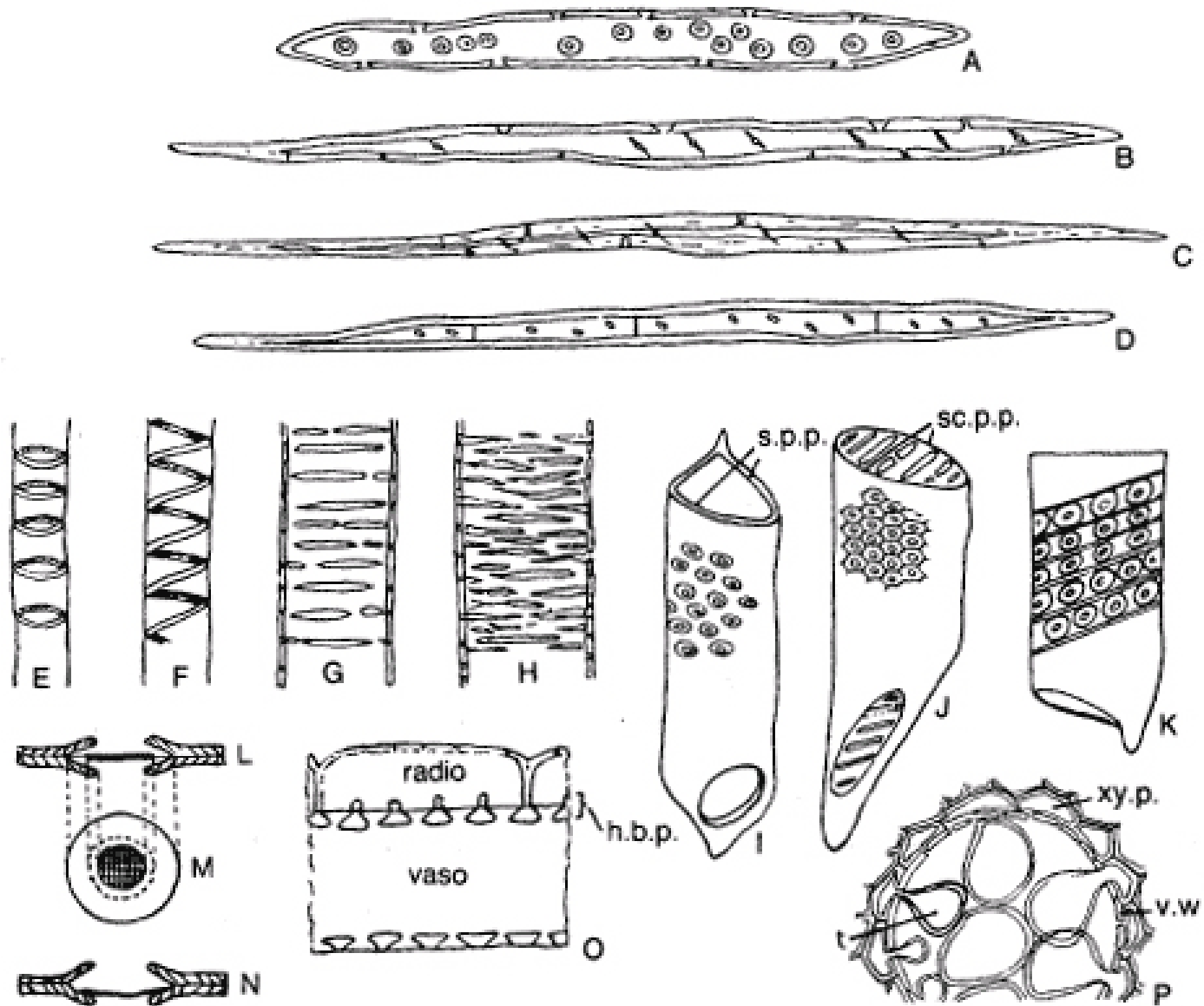
Elementos traqueales

Traqueidas

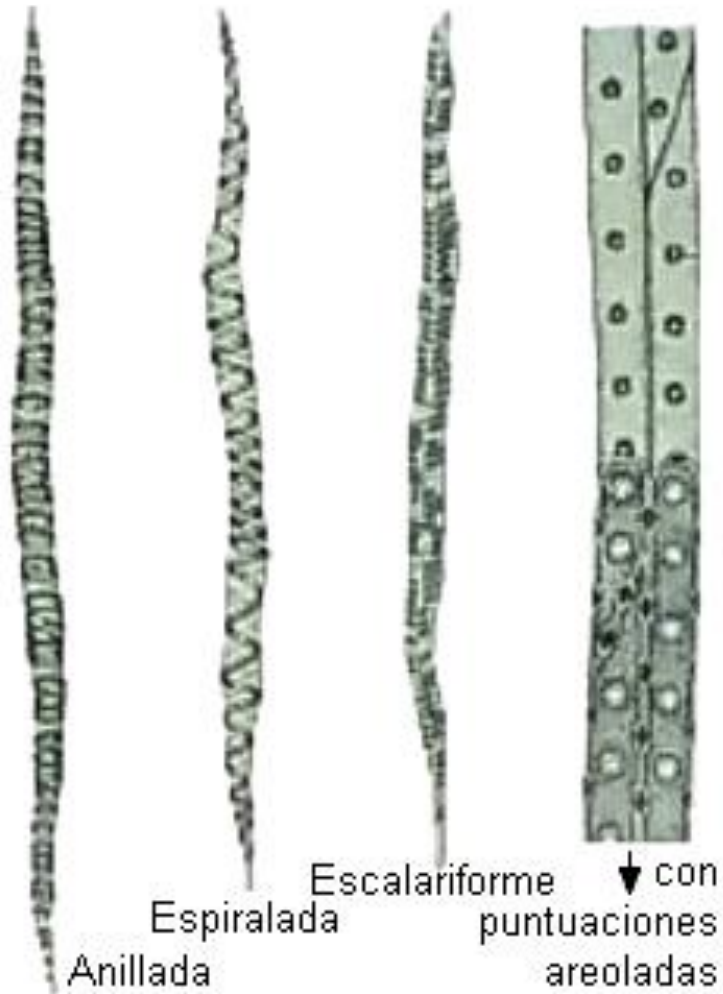


Vasos

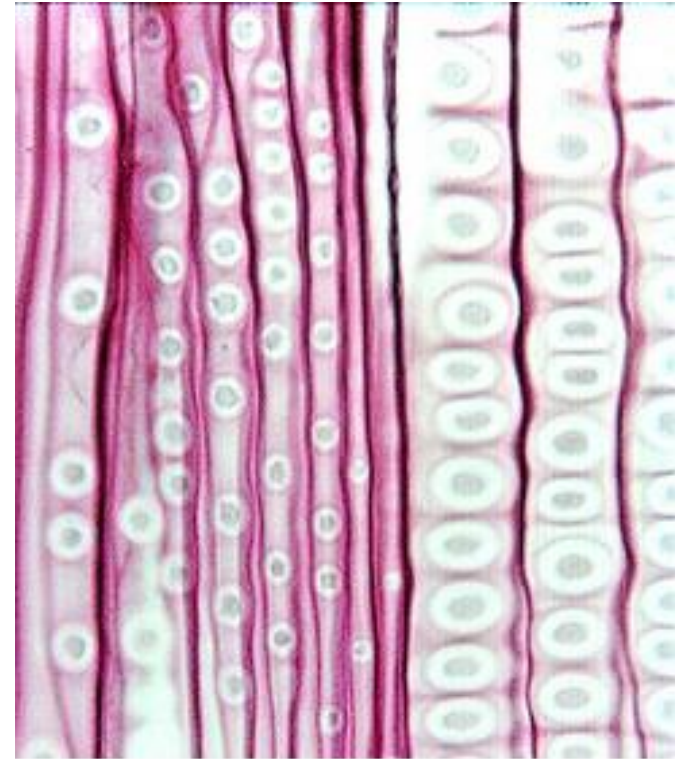




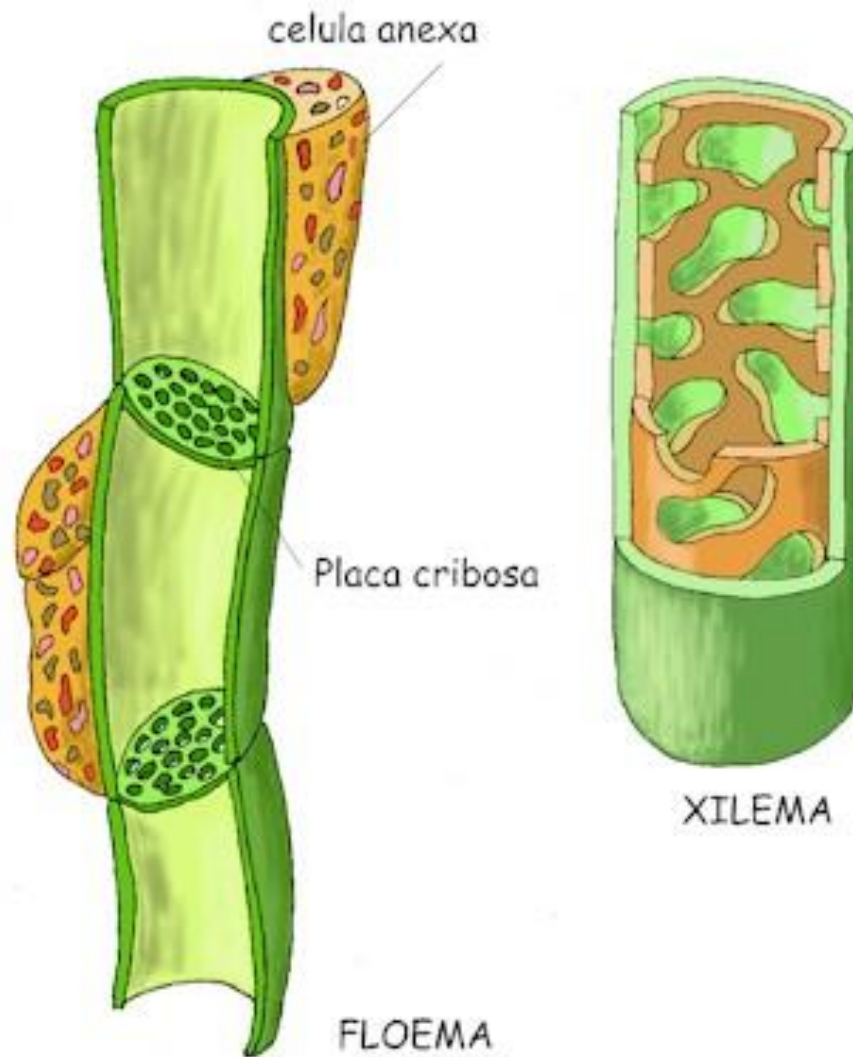
Tipos de Traqueidas

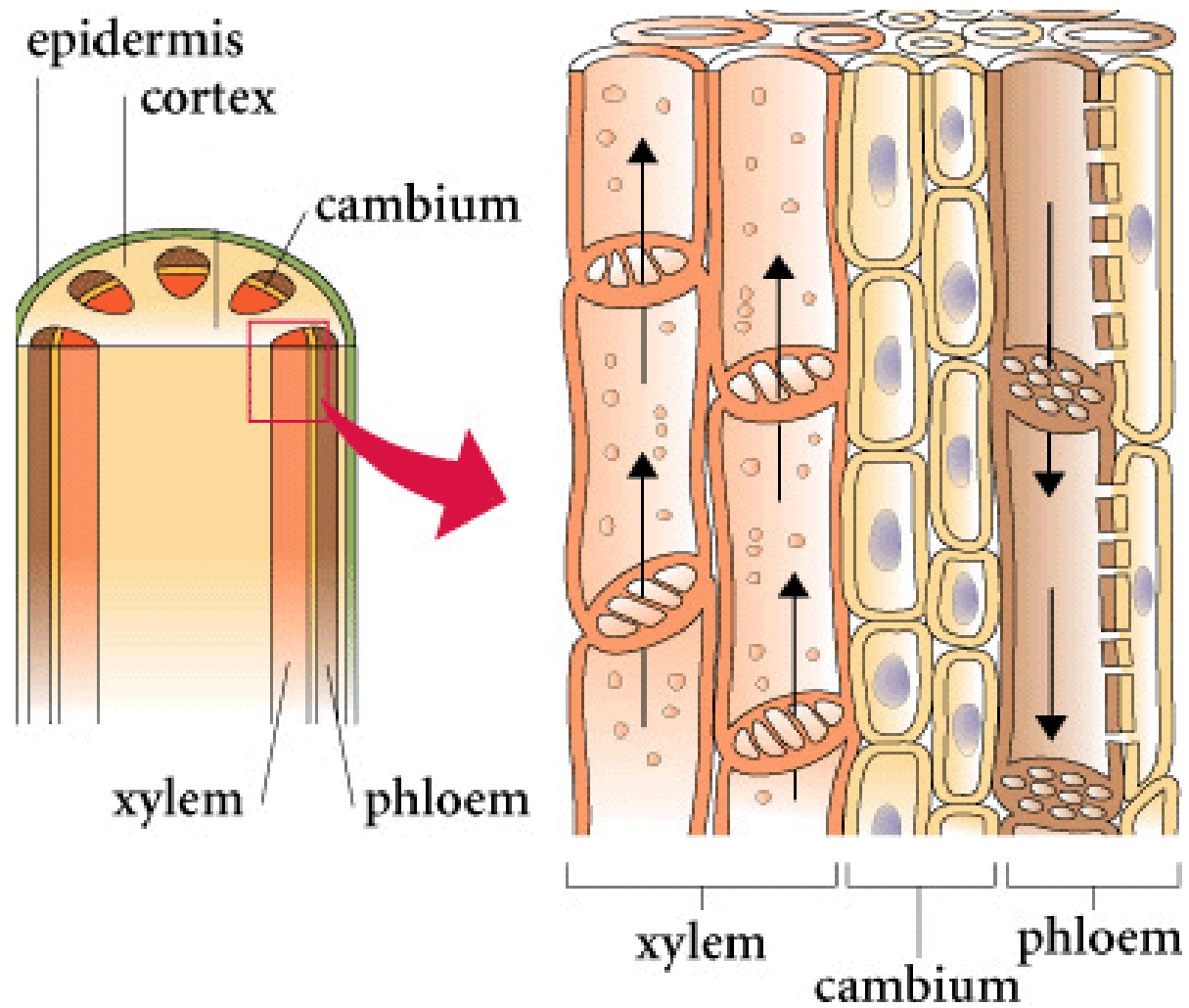


Traqueidas con puntuaciones areoladas

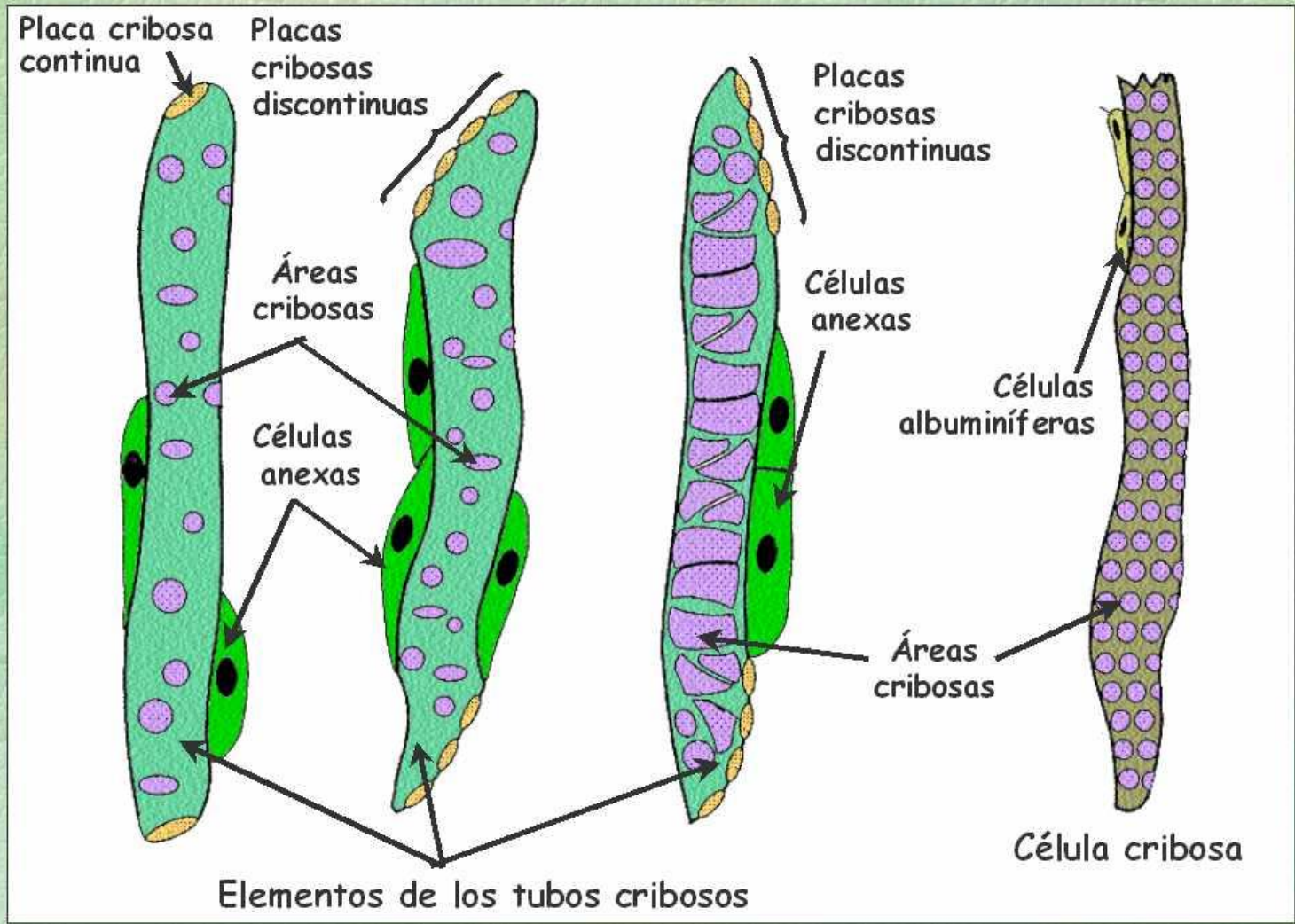


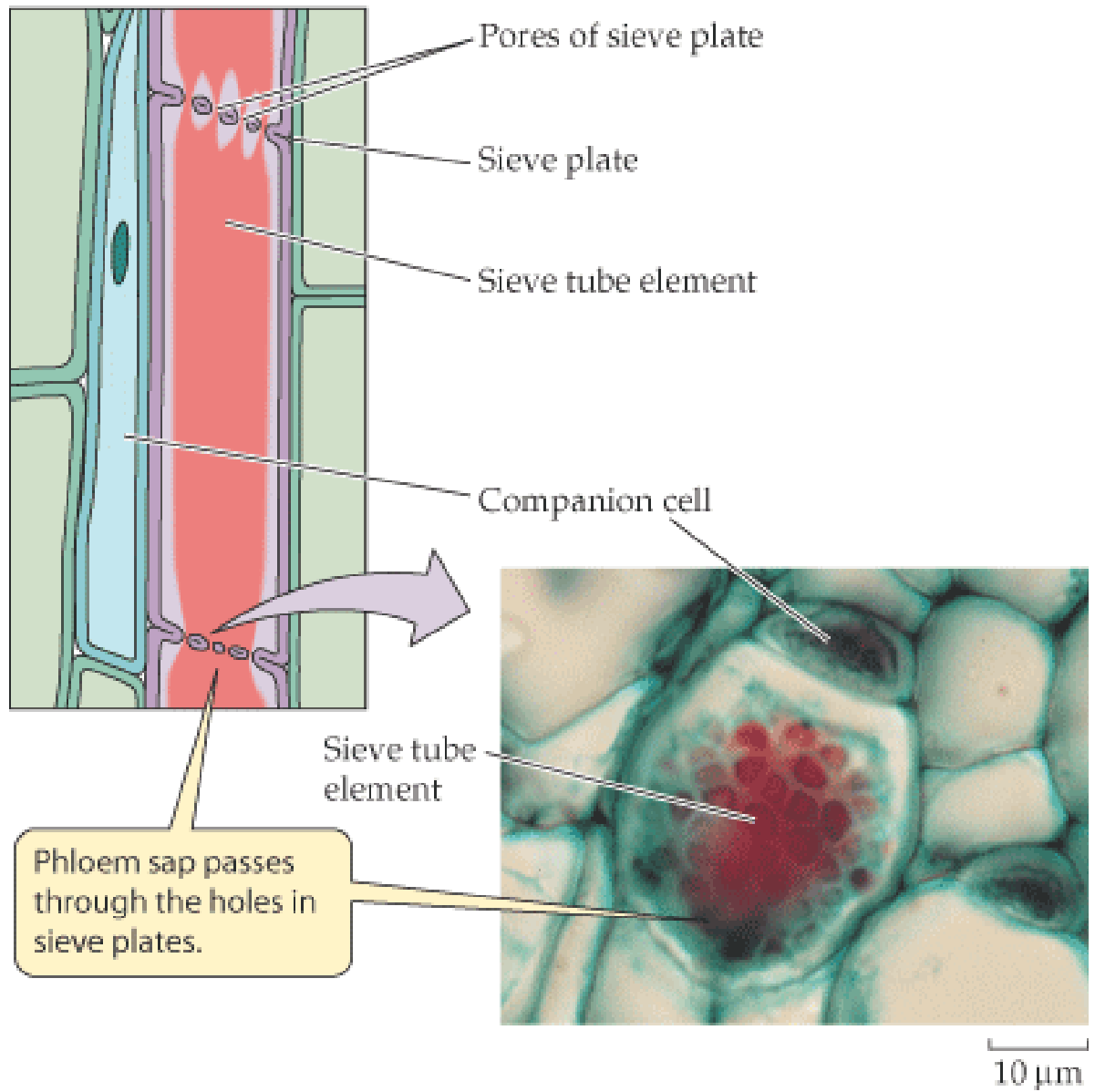
leño tardío ← | → leño temprano



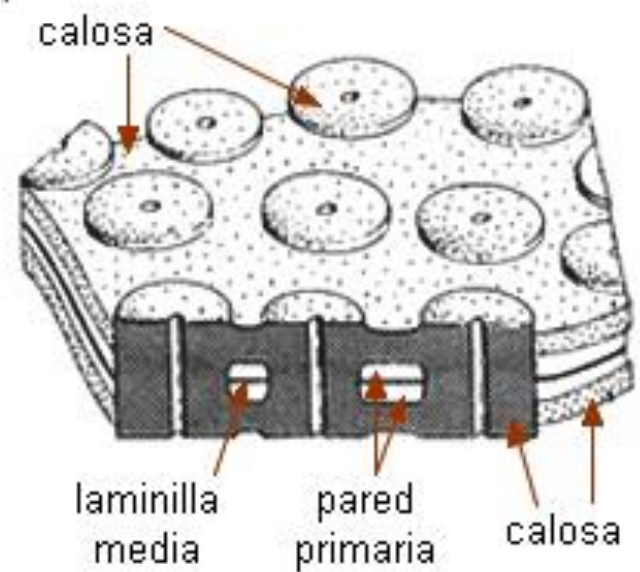
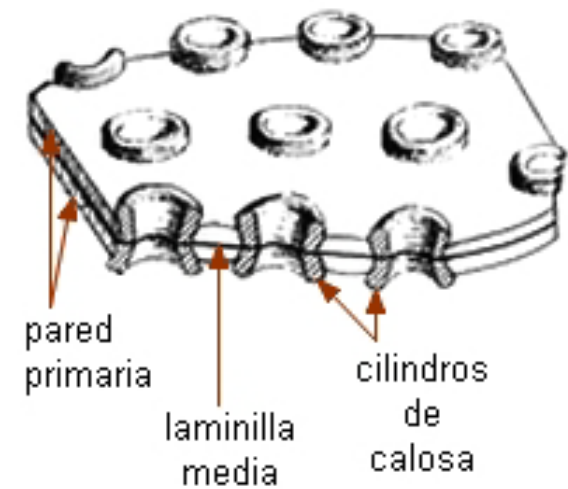
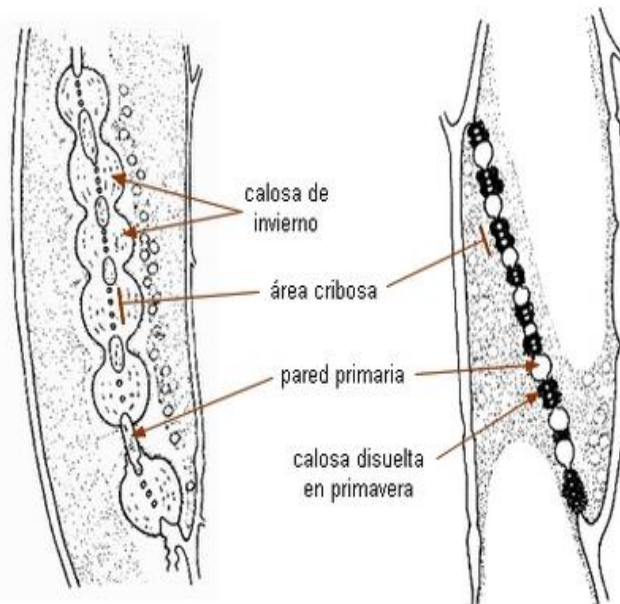
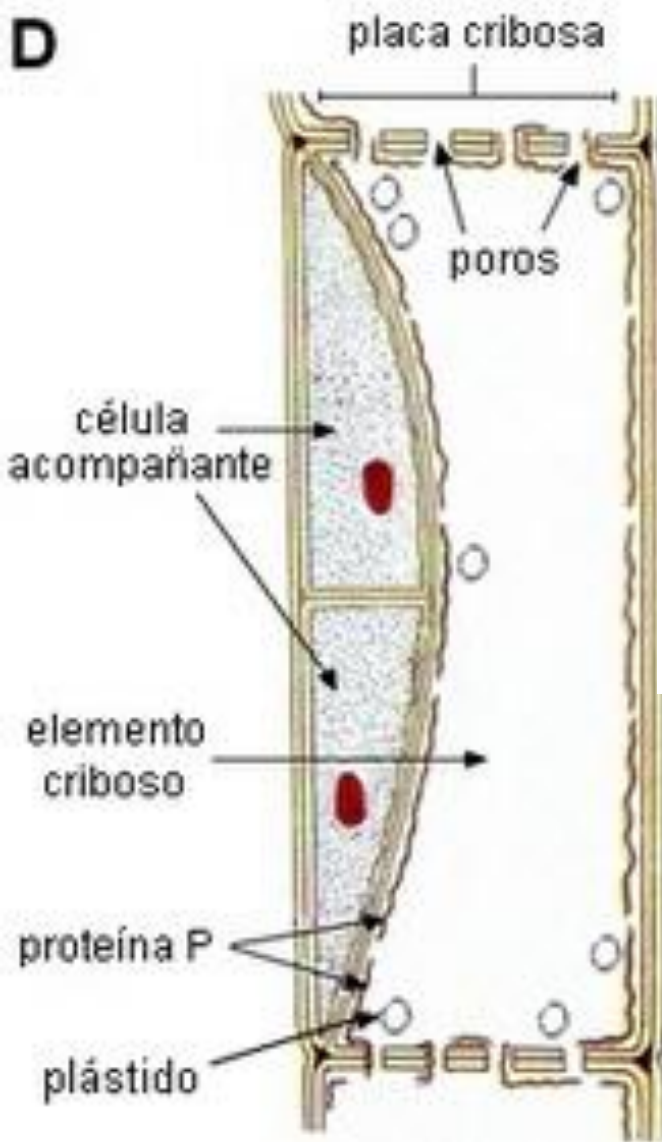


Células Vasculares del Floema





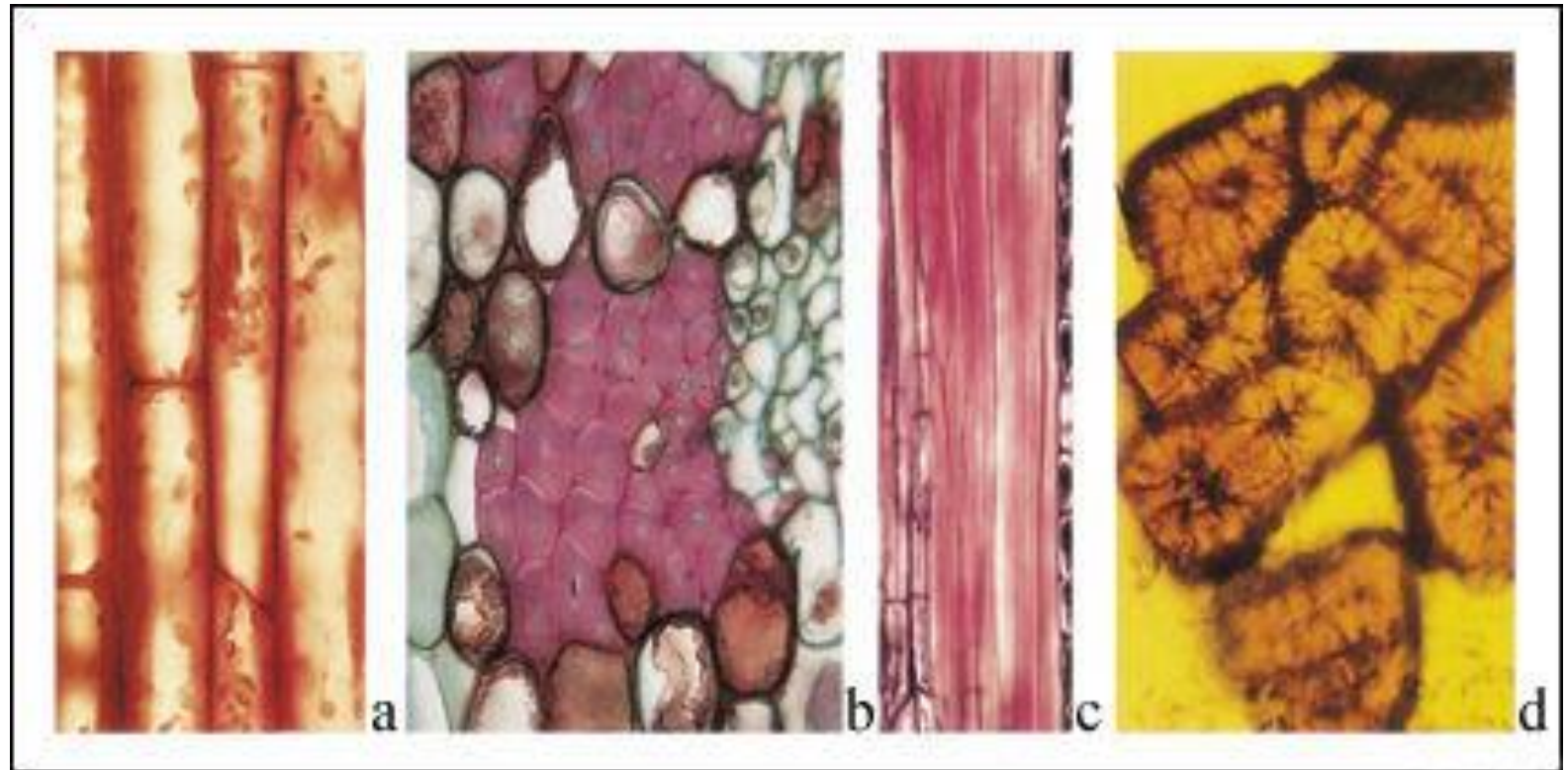
http://peleteiro.es/departamentos/biologia/1_BAC/fisiologia_vegetal.htm

D

hiperbotanica.net

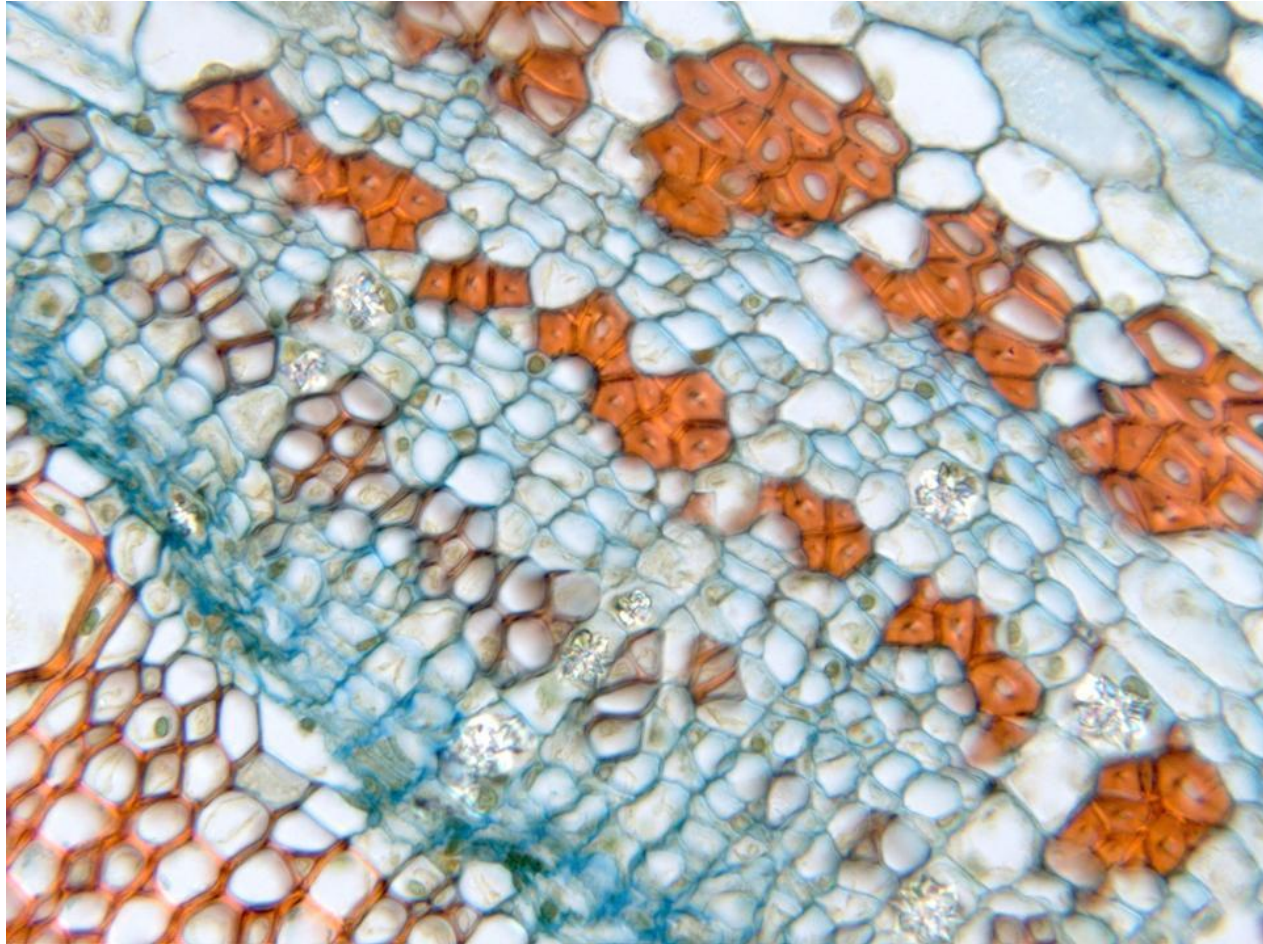
Botanica General- FAYA UNSE

ESCLEREIDAS EN FLOEMA



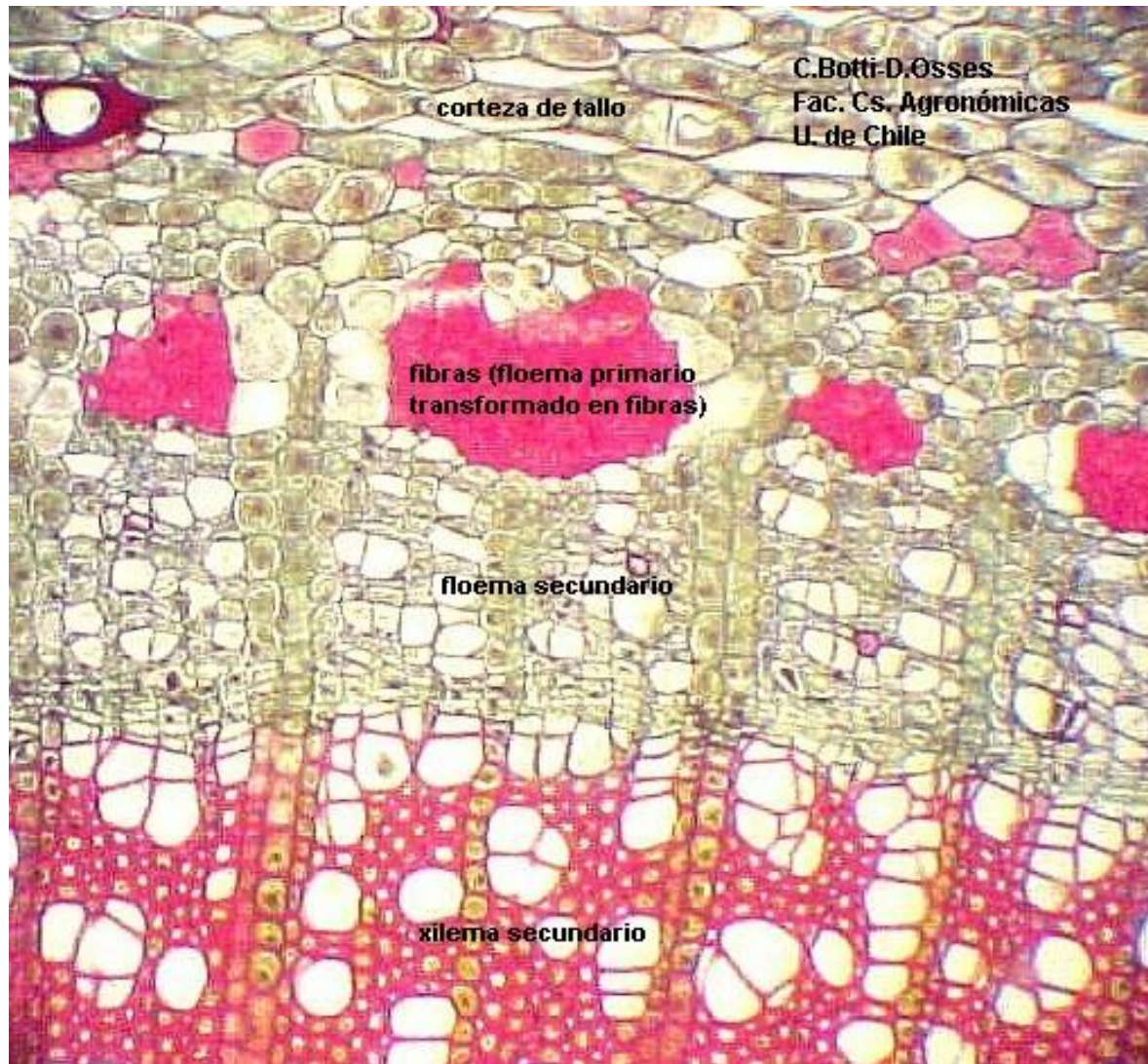
<http://img385.imageshack.us/i/a23.jpg/>

FIBRAS EN FLOEMA



<http://virtual.ujaen.es/atlas/tallohibiscus/tallohibiscus40xb.jpg>

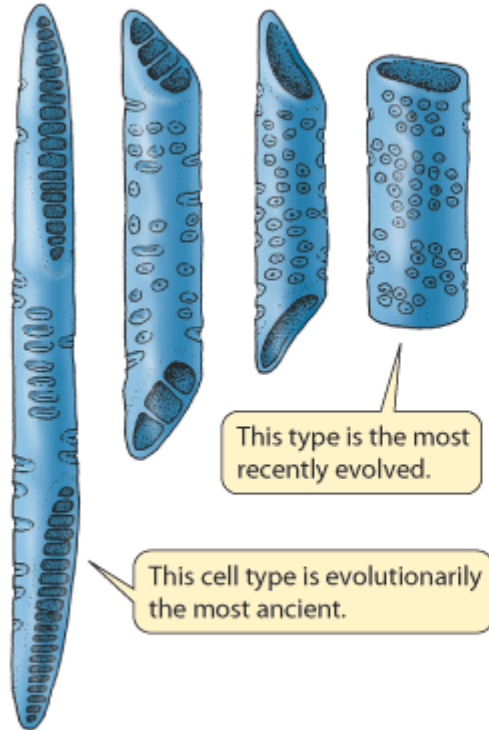
FIBRAS EN FLOEMA



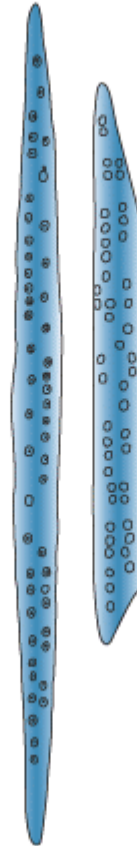
RESUMIENDO: ELEMENTOS DE CONDUCCION DE FLOEMA Y XILEMA

(a) Xylem

Vessel elements



Tracheids

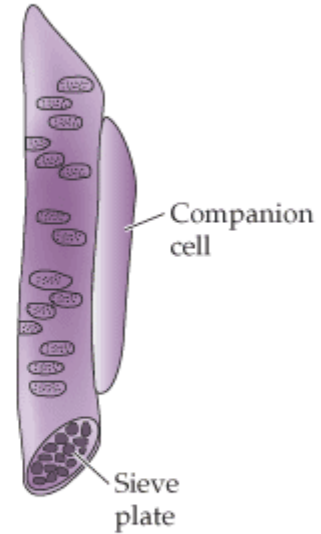


(b) Phloem

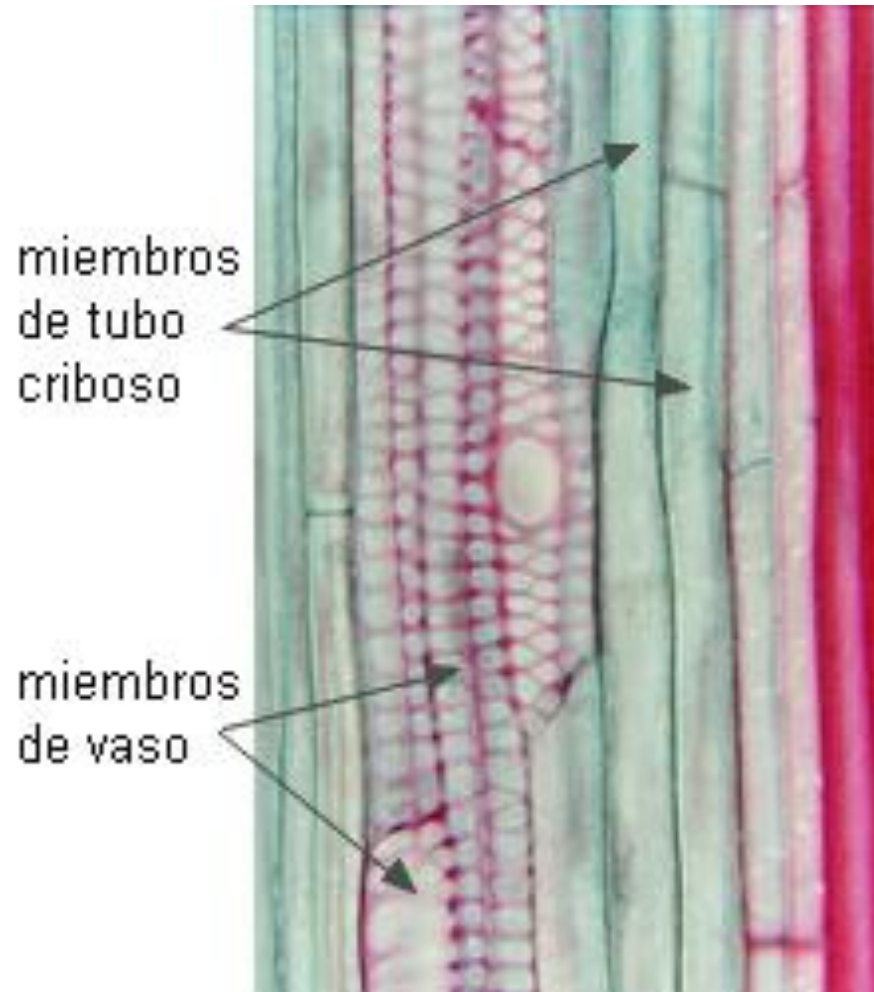
Sieve cell



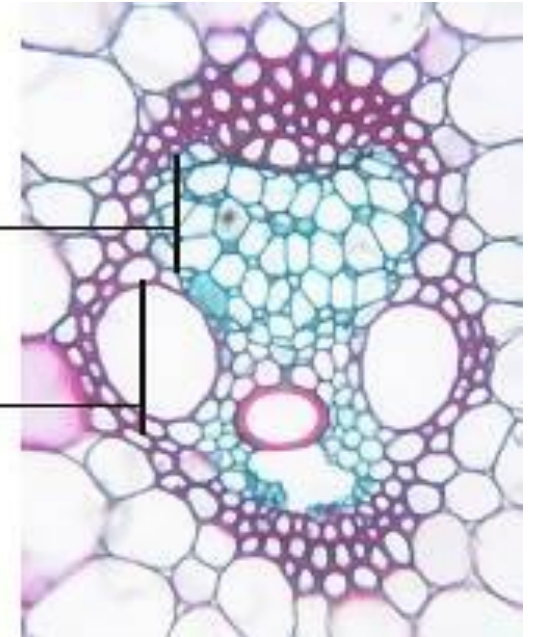
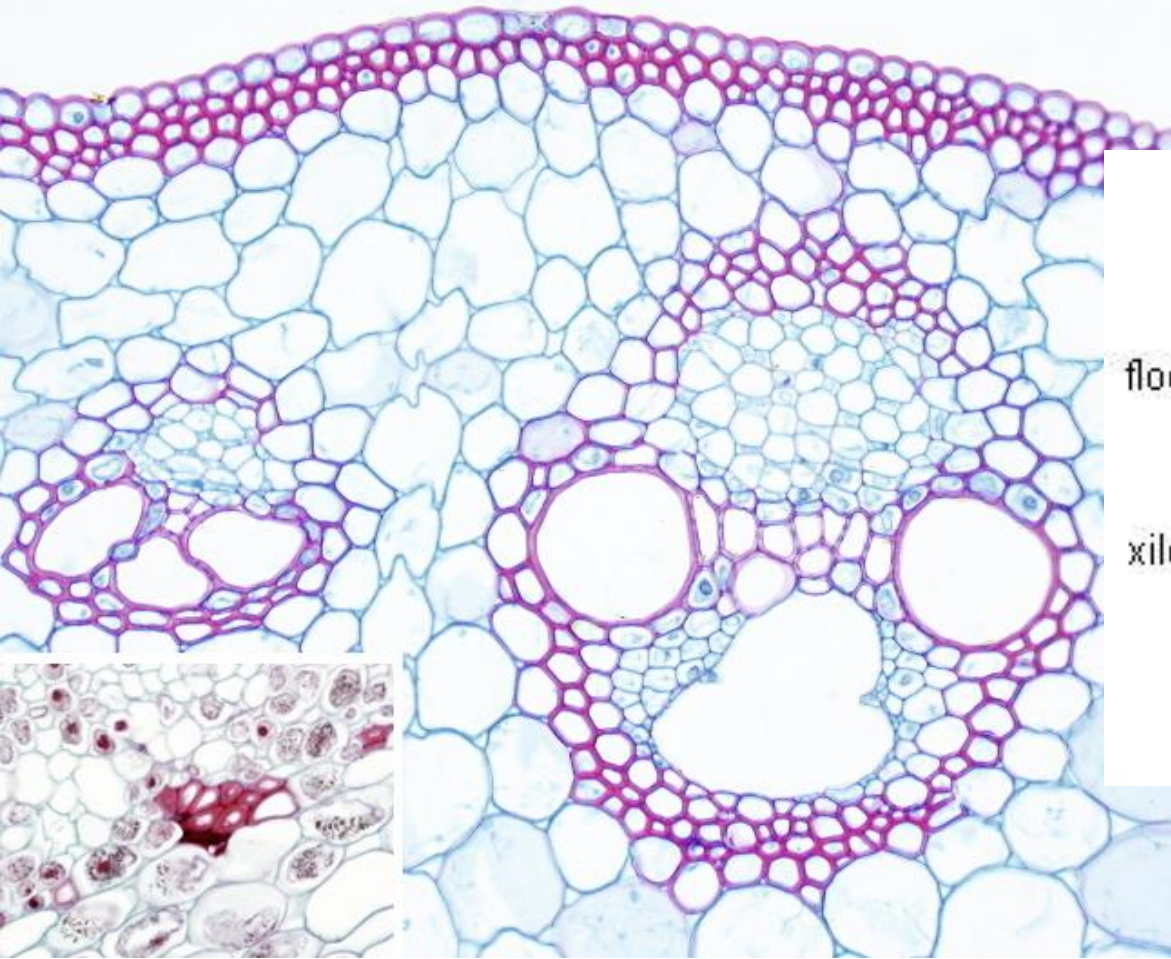
Sieve tube element



XILEMA Y FLOEMA PRIMARIOS

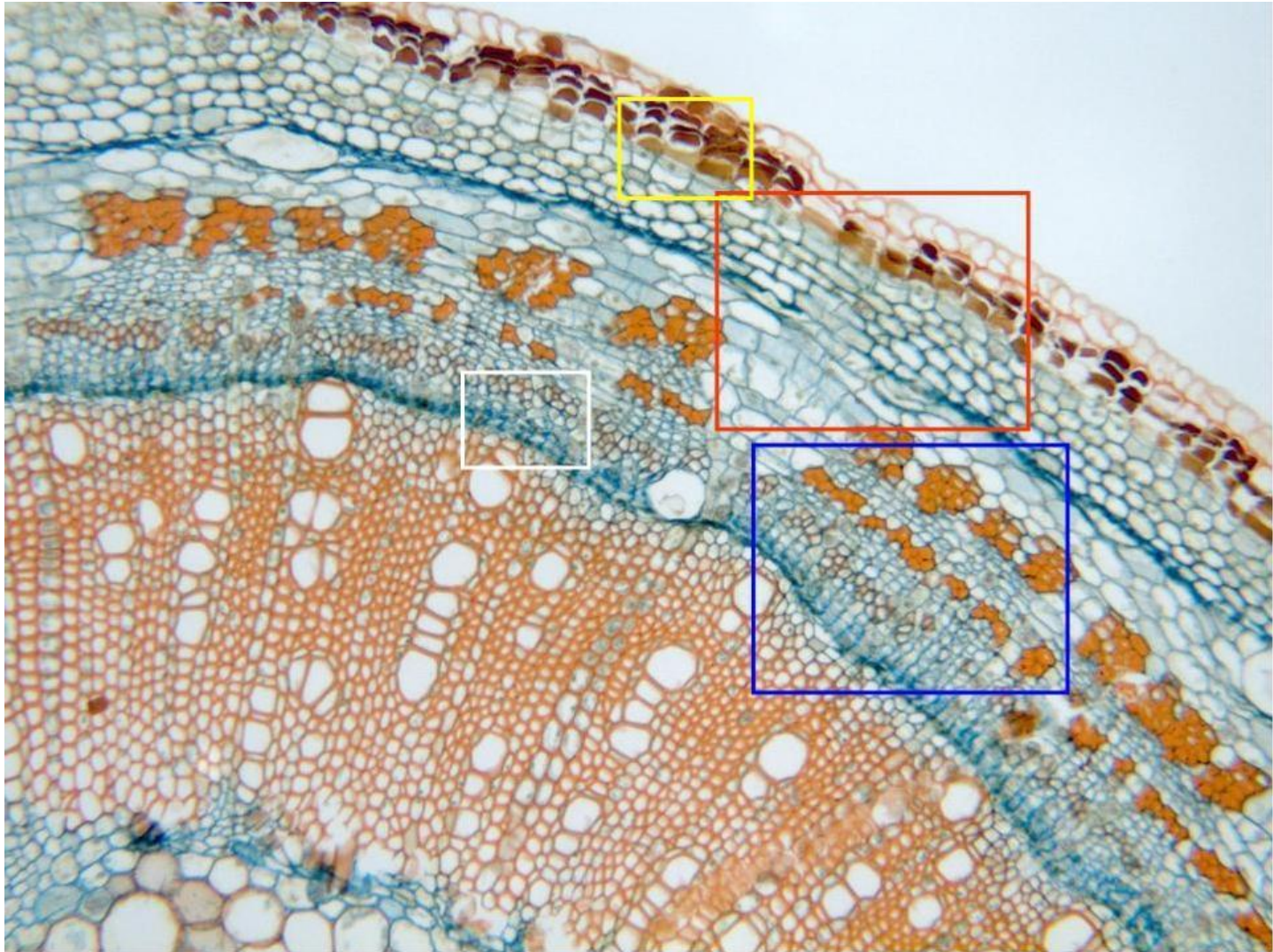


XILEMA Y FLOEMA PRIMARIOS













webs.uvigo.es

XILEMA Y FLOEMA SECUNDARIOS



<http://virtual.ujaen.es/atlas/tallohibiscus/tallohibiscus10x.jpg>

Embriones	Hojas	Tallos	Piezas florales	Granos de polen
Dicotiledónea				
 <p>Dos cotiledones</p>	 <p>Nervadura normalmente ramificada</p>	<p>Haces vasculares dispuestos radialmente</p> 	 <p>Normalmente cuatro o cinco (o múltiplos)</p>	 <p>Tres poros o hendiduras</p>
Monocotiledónea				
 <p>Un cotiledón</p>	 <p>Nervadura paralela</p>	<p>Haces vasculares esparcidos</p> 	 <p>Normalmente tres o múltiplos de tres</p>	 <p>Un poro o hendidura</p>

<http://biologia-jct.iespana.es/curtis/libro/img/36-3.jpg>