

WEATHER table with columns: Day, High, Low, Wind, Clouds

# The Chelsea Standard

QUOTE  
Seeing and not believing is the prime virtue of a thinker; appearance is his greatest temptation.  
—Friedrich Nietzsche

## GENERAL SPECIAL ELECTIONS SET TUESDAY

### Civic Leader V. Burg, I, Dies Suddenly



#### Was Active in Community Life For 40 Years

J. Vincent Burg, 74, Chelsea pharmacist and owner of what is now Chelsea Drug Store from 1924 until 1948, died suddenly Sunday afternoon while walking around the grounds at his home, 315 Wilkinson St. He was 74 years old.



RETIRING: Mr. and Mrs. M. W. McClure are shown above at the Chelsea office of Michigan Consolidated Gas Co., where McClure has been manager the past 16 years, and Mrs. McClure has worked part-time. McClure's retirement, in accordance with the company's retirement plan, becomes effective tomorrow.

### McClure Retiring Tomorrow As Gas Co. Office Manager

Announcement was made this week by J. D. Hogan, general manager of the Ann Arbor District of Michigan Consolidated Gas Co., that M. W. "Mac" McClure, manager of the Chelsea office of the Gas Company, is retiring as of Oct. 30 (tomorrow). This is in accordance with the company's retirement plan for all personnel.

McClure has been a part-time employee at the office throughout the 16 years. McClure began his duties with the Gas Co. a year after he sold The Chelsea Standard to Mr. and Mrs. Walter Leonard. He had been editor and publisher of the paper from 1920 until 1947.

### Career Night Scheduled Next Wednesday

Senior High School's Student Council has arranged a "Career Night" program to be held at Chelsea school Wednesday evening, Nov. 4, for Junior and Senior school students.

### Popularity Increasing

Division of first prize in the weekly foot-race sponsored by the St. Mary's Catholic Church in cooperation with Mrs. Stanley of 208 Hayes St. was won by Mrs. Stanley's daughter, Mrs. Stanley.

### Story Sponsoring Story Hour

Memorial Library is sponsoring story hours for the four-year-old children of November and December. The program is being instituted on a trial basis and if sufficient response is shown, the library plans to make it a permanent feature.



SURPRISE! "Trick or Treat for Hungry Children of World" Bruce Parks and his father Vern Parks were surprised at lunch on Monday by a huge UNICEF collection box with legs and a fairy princess with a little UNICEF. They never did find out who was in the box, but behind the mask they discovered Becky Schnake, who said, "We'll be back Friday night!"

### Voters Face King-Size Ballot as Hot Campaign Goes into Final Days

#### Blood Donor Clinic Slated Tomorrow

Tomorrow (Friday), the Red Cross Mobile Blood Donor Clinic Unit from Detroit will be in Chelsea for the annual Chelsea Community Blood Bank blood donor clinic. The clinic will be held at the Congregational church on E. Middle St. from 11 a.m. until 1 p.m. and from 2 p.m. until 5 p.m.

#### Washtenaw Voters Being Asked To Change Tax Millage Limitation

Next Tuesday, Nov. 3, voters will face a non-size ballot and must vote on federal, state, and township candidates as well as members of the State Board of Education and non-partisan judges for the new court of appeals — plus —

Next Tuesday, Nov. 3, voters will face a non-size ballot and must vote on federal, state, and township candidates as well as members of the State Board of Education and non-partisan judges for the new court of appeals — plus —

Next Tuesday, Nov. 3, voters will face a non-size ballot and must vote on federal, state, and township candidates as well as members of the State Board of Education and non-partisan judges for the new court of appeals — plus —

### Halloween Parade, Party Set Saturday

#### Prizes, Refreshments, Entertainment Will Be Furnished for Children

All children of the community are invited to participate in the Kiwanis-sponsored Halloween parade and party scheduled to take place at the parking lot from 8 until 10:30 p.m. Prizes will also be awarded at this time.

#### 600 Parents Attend Open House Event

Elementary School Principal Sylvester Wojcicki said he and the teachers of both North and South Schools were gratified that so many parents attended the open house held at both schools Wednesday evening, Oct. 21.

#### Area Musicians Urged To Audition For Dance Band

Melvin Strango is inviting all Chelsea area musicians interested in playing in a dance band or forming a combo group to audition Saturday afternoon, Oct. 31.

#### Area Musicians Urged To Audition For Dance Band

Melvin Strango is inviting all Chelsea area musicians interested in playing in a dance band or forming a combo group to audition Saturday afternoon, Oct. 31.

#### Area Musicians Urged To Audition For Dance Band

Melvin Strango is inviting all Chelsea area musicians interested in playing in a dance band or forming a combo group to audition Saturday afternoon, Oct. 31.

#### Area Musicians Urged To Audition For Dance Band

Melvin Strango is inviting all Chelsea area musicians interested in playing in a dance band or forming a combo group to audition Saturday afternoon, Oct. 31.

### WALT DISNEY'S SO DEAR TO MY HEART

A ONCE-IN-YOUR-LIFETIME EXPERIENCE!

**STARTS WEDNESDAY, NOV. 4**

Frank Sinatra, Dean Martin, Sammy Davis, Jr., and the 7 Hoods

Black Sabbath

Boris Karloff

Have you seen such horror!

Not since "Frankenstein"!

Black Sunday

Can you stand the shock!

Only once in a lifetime

2 Horrific Hits — Don't Miss It!

Friday and Saturday, Oct. 30-31

A Special Halloween Spook Show

24-Hr. Program Information — 475-8212

CHELSEA, MICH.

## CHELSEA THEATRE

Office Furniture - Supplies  
FREE DELIVERY  
Ann Arbor - Ph. 665-9141  
After 6 p.m. 665-5550

## MORRILL'S, INC.

of

# R. Wayne Bowlin

Remember To Vote, Nov. 3...

Remember To Vote, Nov. 3...

## GOVERNOR ROMNEY REPORTS

Published every Thursday morning at 300 North Main Street, Chelsea, Mich., and second class postage paid at Chelsea, Mich., under the Act of March 3, 1879.

Editor: Leonard F. Leonard and Publisher: Leonard F. Leonard

General Excellence Award by Michigan Press Association  
1951-1953-1954-1955-1956  
1951-1953-1954-1955-1956  
CR 5-5521  
Telephone 475-8212

Subscription Rates (Payable in Advance)	
One Year	\$3.00
Six Months	\$1.75
Three Months	\$1.00
Single Copies	25¢

Service men or women, anywhere, 1 year \$8.00

NATIONAL EDITORIAL BOARD

Michigan Newspaper Representatives

APPLICABLE MEMBERS

## Michigan Mirror

Editor: Leonard F. Leonard

Secretary: E. White

Michigan Press Association

Remember To Vote, Nov. 3...

Look at all my stuff, mother, I scattered that stuff all over the house, I didn't get as much as they did!

I dropped my bag and it broke, mother.

Don't scatter that stuff all over the house, I didn't get as much as they did!

I got more than anybody!

A BIG NIGHT FOR THE GOBLINS

THE CHELSEA STANDARD CHELSEA, MICHIGAN

## FARMERS FOR YOUR LIVESTOCK

Howell Livestock Auction

Phone 1089 Howell

For Any Information

**Uncle Lew from Lima Says:**

Michigan's largest number of state income tax payers are those who are in the state of Michigan. The state income tax is a progressive tax, meaning that the rate of tax increases as the income increases. This is a fair and equitable way of raising revenue for the state.

**14 Years Ago...**

On Thursday, Oct. 26, 1950, the Michigan State Board of Education met in Lansing, Michigan, to discuss the proposed changes in the state's public school system. The board's report was a landmark document that laid out a comprehensive plan for the future of Michigan's education system.

**24 Years Ago...**

On Thursday, Oct. 27, 1946, the Michigan State Board of Education met in Lansing, Michigan, to discuss the proposed changes in the state's public school system. The board's report was a landmark document that laid out a comprehensive plan for the future of Michigan's education system.

**34 Years Ago...**

On Thursday, Oct. 28, 1940, the Michigan State Board of Education met in Lansing, Michigan, to discuss the proposed changes in the state's public school system. The board's report was a landmark document that laid out a comprehensive plan for the future of Michigan's education system.

## GRAND ORCHARDS

"Count on Quality Where Quality Counts"

Delicious - Jonathan - Wagner

4880 W. M-86, Pinckney

Phone 879-8738

**Just Reminiscing**

Items taken from the files of the Chelsea Standard

The Chelsea Standard has a rich history of reporting on local events and news. Over the years, it has covered many significant moments in the community's history, from the early days of settlement to the modern era of industry and progress.

**Minority Parties Continue Their Struggle in Michigan**

The current battle between the major political parties in Michigan has left the minority parties in a difficult position. They are struggling to gain a foothold in the state's government and to voice their concerns about the policies of the ruling party.

**Ordinance No. 65 (Bicycle Ordinance)**

The Village of Chelsea has adopted Ordinance No. 65, which regulates the use of bicycles on the village's streets and highways. The ordinance is designed to ensure the safety of all road users and to maintain the village's reputation as a safe and attractive community.

**Michigan Mirror**

Editor: Leonard F. Leonard

Secretary: E. White

Michigan Press Association

Product of the Shell Company

It's a job for Boiled Oil

IT'S A JOB FOR SHELLANT

1102

Product of the Shell Company

It's a job for Boiled Oil

IT'S A JOB FOR SHELLANT

1102

THURSDAY, OCTOBER 29

### Trick or Treat Slated Friday Evening for UNICEF

Kids, goblins, spooks, princesses and bums will be going house to house Friday night in Chelsea... UNICEF provides food, milk and medicine to children where it is most needed.



LAYMEN'S SUNDAY: This photo taken after the service they conducted last Sunday shows most of the men who helped...

### Grid Contest

(Continued from page two) guess of adult contestants to the actual 49 scored. The second-place winner, Gordon Beeman...

Beeman tied with Don Wood on the number of winning games but Wood's guess on the tie-breaker game was 45...

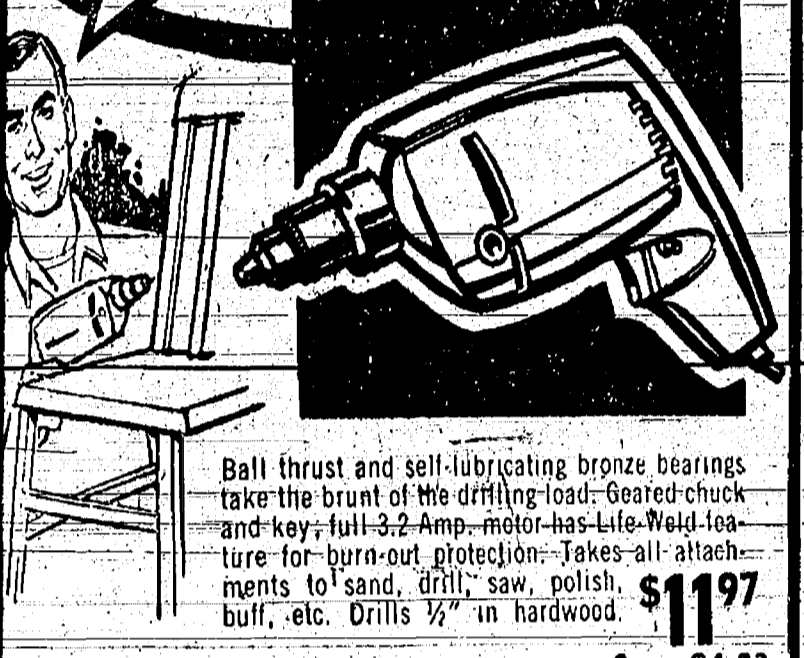
The contest is proving exceptionally popular — this week's entries greatly exceeded the number sent in for the first week's contest.

Everybody's Happy... "Smiling Service" works two ways here. Try it and see! You'll leave us smiling with satisfaction in our friendly, heads-up service. PURE OIL PRODUCTS HANKERD'S SERVICE

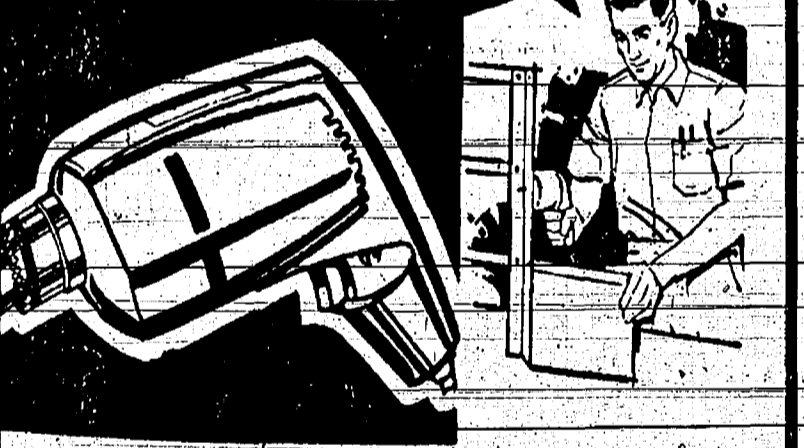
YOUR CHOICE OF Superior PROVEN Drills at Low, Low Prices

PRO's Big Ten \$75,000 Sweepstake Sale Ends October 31

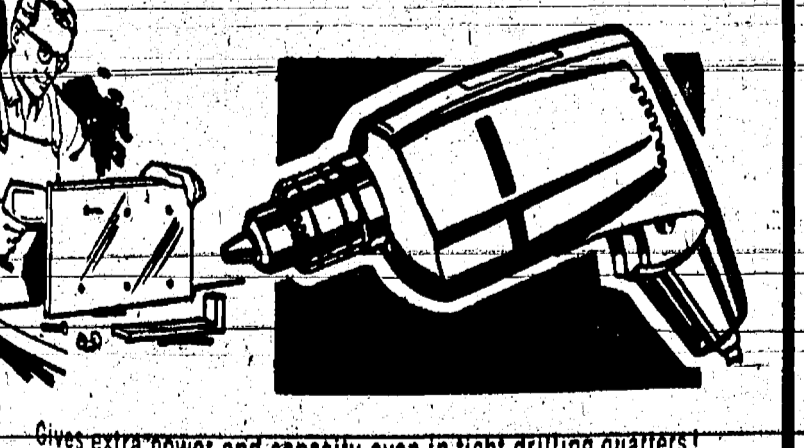
PROVEN #1100 1/4" DRILL... SPEEDY, YET LIGHT WEIGHT - WITH POWER TO SPARE!



PROVEN #1101 3/8" DRILL FOR THE BIGGER DRILLING JOBS



PROVEN #1102 COMPACT 1/2" DRILL BIG CHUCK CAPACITY, BIG 1/2 HP - YET WEIGHS ONLY 5 POUNDS!



CHELSEA HARDWARE PROVEN AMPERE RATING... 116 SOUTH MAIN ST. PHONE GR 9-6311

UNICEF means The United Nations International Children's Emergency Fund, and is truly the "Children's Friend."

Is your money well spent? Yes. One of your pennies delivers five glasses of milk to hungry children.

UNICEF is financed on a purely voluntary basis by contributions from governments, private contributors and by efforts including "trick or treat" and the sale of paper UNICEF greeting cards.

### Friends of Library Will Meet Monday

The fall meeting of Chelsea Friends of the Library will be held at McKing Memorial Library Monday evening, Nov. 2, beginning at 8 p.m.

Jack Merkel, president of the group, said the agenda at the semi-annual business meeting will include an evaluation of possibilities for future adult education programs.

### GET THINGS DONE elect elly PETERSON



U.S. senator VOTE REPUBLICAN NOV. 3

### JV Gridders Win No. 5 For Season

The Chelsea JV's scored their fifth victory of the season by defeating Dexter, 20-0 last Thursday evening.

Chelsea's first score of the game came in the second quarter when Bob Taylor scampered 67 yards the try for extra point.

The final score of the game came in the fourth quarter when Bill Harvey scored on a two-yard keeper-capping a 62-yard drive.

SIREN SAVES LIFE - Anaheim, Calif. - While enjoying a cup of coffee a patrolman noticed a baby choking and turning blue.

### GOP Caravan Plans County Tour on Friday

State Senator William G. Milliken, Traverse City (R), Majority Floor Leader of the Michigan State Senate, the Republican Candidate for Lt. Governor, will campaign in Washtenaw county on Friday, Oct. 30.

Accompanying Milliken will be Representative Gill Bysley, candidate for the State Senate; House of Representative candidates, Tom Sharpe, Marvin Esch, and Jim Warner.

The key to happiness in life lies in unselfishness. Toyland is open at DANCER'S CHELSEA

HALLOWEEN Discounts TAKE PICTURES of the HOBGOBLINS NO. 620 or NO. 127 BLACK & WHITE FILM.. 43¢ FLASH BULBS... 9-VOLT TRANSISTOR BATTERIES... 2 for 49¢ BAYER ASPIRIN... Only 53¢ REVLON HAIR SPRAY... 98¢ LAST CALL FOR Halloween Masks, Costumes, etc. BUDGET-WISE STORE Chelsea's First Discount Store 116 SOUTH MAIN ST. PHONE GR 9-1611


RE-ELECT SYLVESTER A. LEONARD TREASURER OF WASHTENAW COUNTY Member of Washtenaw County Farm Bureau Past President of Willis Kiwanis Club Member Milan Masonic Lodge Member of Lincoln Community E.U.B. Church Supervisor of Augusta Township for 10 years Member of Lincoln School Board of Education 5 years VOTE REPUBLICAN NOVEMBER 3, 1964

DANCER'S OPENS TOYLAND DOLLS GAMES CONSTRUCTION TOYS PRE-SCHOOL TOYS SCIENCE TOYS MODELS DANCER'S THREE FLOORS OF VALUES CHELSEA



**WISCONSIN ADVICE**  
 On a recent visit to Fair, Lee Merrivale, of St. Louis, gave this advice: "If he had a reason for his long life, 'I never touched wine or tobacco or had anything to do with women before I was 14 years old. After that I'm not talking.'" (Political Advertisement)

**Vote November 3 and Re-Elect GEORGE A. PETERSEN**  
 24 YEARS' EXPERIENCE  
 WASHTENAW COUNTY SHERIFF'S DEPARTMENT  
 REPUBLICAN CANDIDATE for SHERIFF  
 6 Years Your Sheriff



**Educational TV Cited as Help by Science Teacher**  
 "People grow less communicative as they become older," was the thought expressed by James McClure of Ann Arbor, High school who conducts a TV class in science viewed by Chelsea fifth and sixth graders. And this is one fact that gives educational television added value.  
 Often, the teacher and pupil develop a new, closer relationship as they catch the television teacher making mistakes—as even they do. Hence, the high school students who wouldn't catch their own teacher up in a mistake, pointing on the TV errors—and learn by doing.  
 PTA funds from last year's activities were given individually to each elementary classroom teacher by Principal Sylvester Wojcicki at the PTA meeting held last Wednesday night. Amounting to \$5 per teacher, the money is to be used to help defray miscellaneous supplies costs, an item which often takes up to \$25 or \$3 of the teacher's own money in a school year.

**No Report Available Yet on Girl Scouts...**  
 Chelsea Community Chest campaign workers have begun their work but no reports on results, to date, are available as yet.  
 Commenting on the importance of raising the \$10,200 goal set for Chelsea's campaign which got underway Oct. 22, the campaign committees prepared the following statement:  
 The Chelsea Community Chest Board would like to point out one more good reason for giving your share to the United Fund. Have you considered what has happened in other countries where poverty, sickness and oppression are common among significant segments of the population? The under privileged classes soon develop a "what can we lose" attitude.  
 This attitude leads to dangerous and reckless revolutionary movements and makes fertile ground for the seeds of Communism.  
 Karl Marx would look like Robin Hood to a desperate unfortunate with no food for his family or no money to pay the medical bills for a sick loved one.  
 The need for freedom which most of us value so highly is of little importance to those whose basic needs of food, shelter, and good health are unsatisfied.  
 The Community Chests and United Funds in the United States are examples of free enterprise and a free people working and giving freely to do what Communists and Socialists say must be done by the state.  
 Your local Community Chest Board asks each citizen to contribute fully to prove that a free democratic nation can cope with the social problems of our times.

**PERSONAL NOTES**  
 Mrs. Elba Gago and Miss Lillie Wackebut, with Mrs. A. A. Schoon of Dexter, spent Saturday in Detroit as guests of Miss Marguerite Eisen. They had lunch at Miss Eisen's home, visited the Evangelical Home for Children and Old People and attended the Senior Citizens Arts and Crafts Exhibit at the Detroit Historical Museum.  
 Mr. and Mrs. Fremont Boyer and son, David Carl, returned home Saturday from a two-week vacation trip. They visited Mr. Boyer's brother and his family, Mr. and Mrs. Keith Boyer at St. Louis, Mo., then traveled to Mesa, Ariz., where they spent several days as the guests of Mr. and Mrs. Wesley Stewart and family. Mrs. Stewart was formerly Lauretta Peck. They also called on the Rev. and Mrs. Peck and Mr. and Mrs. William Miller and family, of Phoenix, Ariz. Mrs. Miller was formerly Nancy Peck. Mr. and Mrs. Boyer also visited Mr. Boyers' cousin, Staff Sergeant John C. Adams and family, at Fairfield, Calif., before returning to Michigan.

**THANK YOU**  
 Many thanks to our friends and relatives for their kind expressions of sympathy, for flowers and cards at the time of the death of our wife and mother. Special thanks to the Rev. A. P. Rickard and the Rev. A. Theodore Halsted for their consoling words. Also particular thanks to the staff at Colonial Manor Nursing Home and Dr. A. A. Palmer for the excellent care they gave Mrs. Gorman during the past few years, and to the Eastern Stars for the memorial service, as well as to District No. 13 of the Michigan Funeral Directors Association for their many kindnesses.  
 Galbraith Gorman, Jay C. Bowne and family

**THANK YOU**  
 Many thanks to all who so thoughtfully remembered me while I was in the hospital and since my return home. The kindnesses extended at this time are very much appreciated.  
 Walter Haab.

**THANK YOU**  
 I wish to thank my relatives, neighbors and friends for the cards I received and for the many kindnesses extended while I was in the hospital and since my return home. Everything was much appreciated.  
 Mrs. Victor Miller.



**CARD OF THANKS**  
 The family of Everett Moore wishes to express heartfelt gratitude and thanks to our relatives, friends and neighbors for the flowers, cards and food brought to us during our recent bereavement.  
 Adeline Moore and family.

**THANKS**  
 A sincere "thank you" for the cards, flowers, gifts and visits I received during my stay in the hospital and since my return home. Your thoughtfulness is deeply appreciated.  
 Leah Herrick.

**THANK YOU!**  
 Sincere thanks and appreciation to our friends and neighbors for their help at the time of our barn fire. Our gratitude and special thanks to the Chelsea Fire Department to those who served them coffee and to the ladies who brought in food for the clean-up.  
 Mr. and Mrs. Floyd Brand and family.  
 (Political Adv.)

**VOTE REPUBLICAN NOVEMBER 3**

**PRESIDENT**  
 "I see an America proud of its ways, proud of its dreams, and determined actively to proclaim them. With your help and with God's blessing, we go forward to greatness in this nation."  
 BARRY GOLDWATER  
 President


**VICE PRESIDENT**  
 "Today government has one hand in everybody's business and the other in everybody's pocket."  
 WILLIAM E. MILLER  
 Vice President

**KEEP MICHIGAN ON THE MOVE ELECT A ROMNEY TEAM**  
 Never Before Such a Record of Progress

In just two years, George Romney's Republican leadership... George Romney's public policies... has brought Michigan from fiscal chaos to financial strength from recession to prosperity, from gloom and shame to hope and pride. Today, instead of being on the rocks, Michigan is on the move!  
 This incredible comeback was accomplished by George Romney and the Republican legislature despite the opposition, the politically inspired resistance of an all-Democratic administrative board.  
 Think how much more progress could have been made if George Romney had a team that supported him, worked with him, helped him!  
 Now's your chance to give Michigan a great Republican team of qualified, able, dedicated men and women in the executive branch and the field of education who will keep our great state on the move with the Romney Republican leadership.

**GIVE ROMNEY THE TEAM HE NEEDS TO FINISH THE JOB!**

**ELLY M. PETERSON**  
 U. S. SENATOR  
 A former State Vice Chairman of the Republican party, Assistant Chairman of the Republican National Committee and Executive Director of the Women's Division of the Republican National Committee, Elly Peterson will represent Michigan with candor, freshness, and extensive political experience.



John Green Meyer Warshwsky George Romney Elly M. Peterson William G. Milliken

**GILBERT E. BURSLEY**  
 State Senator  
 (District includes all of Washtenaw County)

**MARVIN ESCH**  
 State Representative — 53rd District  
 (53rd District includes the City of Ann Arbor and the Township of Ann Arbor)

**JAMES F. WARNER**  
 State Representative — 52nd District  
 (District includes the City of Ypsilanti and the townships of Webster, Northfield, Salem, Superior, Ypsilanti, Augusta and York)

**THOMAS SHARPE**  
 State Representative — 51st District  
 (District includes Lyndon, Sylvan, Sharon, Manchester, Dexter, Lima, Freedom, Bridgewater, Saline, Lodi, Pittsfield and Scio Townships)

Marvin Esch, the holder of A.B., M.A., and Ph.D. degrees from the University of Michigan in the fields of Political Science, Speech and Education, currently on the Staff of Wayne State University and the University of Michigan in the Institute of Labor and Industrial Relations, is uniquely qualified to carry on the record of outstanding representation of Ann Arbor City and Township in the House of Representatives in Lansing.

Presently serving in the House of Representatives in Lansing as he has for over a decade, Jim Warner continues with vigorous leadership to serve on the important Ways and Means Committee of the House and as Chairman of the Joint House-Senate Conference Committees on Higher Education and General Government and Public Safety and Defense, playing an important role in the progress of our state.

Presently serving with distinction in the Michigan Legislature as Representative of the 51st District, Tom Sharpe brings wide experience as a Legislator, Constitutional Convention delegate, farmer, and retail and real estate businessman and service as Chairman of the Village Corporations Committee of the House.

**CONTINUE EFFICIENT, EXPERIENCED COUNTY LEADERSHIP**

**WILLIAM F. DELHEY**  
 Prosecuting Attorney

**GEORGE A. PETERSON**  
 Sheriff

**LUELLA M. SMITH**  
 County Clerk

**SYLVESTER LEONARD**  
 County Treasurer

Over 20 years as Washtenaw County Clerk, and as the only woman ever to be elected, Luella M. Smith continues to pioneer in streamlining office and filing procedures and providing the County with prompt, effective, and courteous service.

Six years as Sheriff of Washtenaw County and a winner of the Distinguished Service Award given by the Michigan State Safety Commission, Sheriff Peterson will continue to provide efficient, capable and fair law enforcement for the County.

Six years as Sheriff of Washtenaw County for two years as Washtenaw County Clerk, and as the only woman ever to be elected, Luella M. Smith continues to pioneer in streamlining office and filing procedures and providing the County with prompt, effective, and courteous service.

Treasurer of Washtenaw County for two years, a former member of the Board of Supervisors for 10 years, Sylvester Leonard has operated the office of the County Treasurer with efficiency and courtesy; his experience has shown that he serves the citizens of Washtenaw well, and offers promise of continued high quality of operation in the future.

**NON-PARTISAN COURT OF APPEALS**

**TIMOTHY QUINN** ..... Circuit Judge 6th Circuit

**LOUIS MCGREGOR** ..... Circuit Judge Genesee County

**FARRELL ROBERTS** ..... State Senator

**DONALD R. FREEMAN**, Flint Municipal Judge

**CIRCUIT COURT**

**WILLIAM F. AGER, JR.** ..... Circuit Judge 22nd Judicial Circuit

**PATRICIA NEWKIRK HARDY**  
 Register of Deeds

**JOHN FLOOK**  
 Drain Commissioner

**HERBERT S. HICKS**  
 Surveyor

Thirteen years experience, marked by economy, efficiency, and concern for public health and the preservation of natural resources have proven that John Flook, present Drain Commissioner has the technical know-how and the community concern necessary to safeguard this vital service to our citizens with forward thinking, sound and practical developments.

A Civil Engineering graduate of the University of Michigan with over 40 years practice as a Registered Civil Engineer and Land Surveyor in Washtenaw County, many of them as the County Surveyor, a post he now holds, Herb Hicks has demonstrated the mastery of his profession and has earned the high respect of those he has served — a record worthy of continuation.

**Play It Safe with Wheel Alignment**  
 Don't wobble in the road. Stop in and let us align your wheels, balance your tires, and get your car ready for a winter of safe driving. You can depend on us for expert workmanship at reasonable rates. Prompt service always!

**COMPLETE ONE-STOP SERVICE**

**Bill Brown's Super Service**  
 GOOD GULF PRODUCTS  
 295 SOUTH MAIN ST. PHONE GR 9-1311



**BURGHARDT FUNERAL HOME**

**SPECIALS**

46-OZ. CAN  
**Hawaiian Punch 3 cans 89c**

NO. 2 1/2 CAN DEL MONTE  
**Pumpkin . . . 2 cans 31c**

WILDERNESS  
**Cherry Pie Filling**  
 . . . 2 cans 43c

6-OZ. PKG. NESTLE'S  
**Chocolate Morsels**  
 . . . 2 pkgs. 33c

JIFFY  
**Frosting Mix . . . 10c**

**KUSTERER'S FOOD MARKET**  
 DIAL GR 9-3331 WE DELIVER

24-HOUR AMBULANCE SERVICE  
 214 E. MIDDLE ST. CHELSEA  
 Phone GR 5-4141 or GR 5-5141


**CHLSEA STATE BANK**

Member Federal Reserve System

Member Federal Deposit Insurance Corp.

Small additions to your Savings Account soon add up to a sizeable sum of money. Open your account now.

**take a fresh hardworking look... vote for Elly Peterson U.S. SENATE**



**CHLSEA STATE BANK**

Member Federal Reserve System

Member Federal Deposit Insurance Corp.

(Paid for by Michigan Republican State Central Comm.)

King-Size Ballot Faces Voters . . .

(Continued from page one)
S. Hicks meets Democrat Edward L. Jones and incumbent prosecutor William Dolhey opposes Vanzetti Hamilton.

Running for eight-year terms are Baptist minister, Dr. Charles E. Morton of Detroit; optometrist Dr. Edwin L. Novak of Flint; former Congressman Alvin M. Bentley of Owosso; and James F. O'Neil of Livonia.

Trust Co.; Benjamin M. Ross, retired businessman of Wyandotte; Charles H. Gerhanson, vice-president of a retail company of Detroit; and Wilbur M. Brucker, Jr., son of the former governor of Michigan, an attorney of Detroit.

PTA Sends 6 To Education Workshop

Six Chelsea people are attending the 9th State-wide Community Education Workshop in Flint Wednesday through Friday, Oct. 28-30.

Bulldogs Lose To Stockbridge Panthers, 12-3

Will Travel to Saline Friday Evening To Battle for Second-Place Finish

A non-league game at Stockbridge Friday night the Stockbridge Panthers were the victors, taking the game from the Chelsea Bulldogs by a score of 12-3.

Halloween Party Slated Saturday

At Monday's meeting, William Freeman, chairman of the annual Kiwanis Halloween party for children of the community, made final arrangements with his committee for the event which is scheduled for Saturday, Oct. 31. Monday's meeting took place at the Congregational church.

Michigan Minerals Booklet Available

Lansing — Copies of "Michigan Minerals," a 110-page booklet published in 1961 and available for 50 cents from the Conservation Department's Publications Room in Lansing.

MEADER HAILED BY HALLECK

Representative Charles Halleck (R-Ind.), Minority Leader of the House of Representatives, veteran of many political battles, recently had to say about our Representative GEORGE MEADER:

CITY SLICKER SLEUTHING

Band leader Spike Jones was once investigated by the FBI before a show in Washington at an affair honoring Harry Truman.

SPECIAL ELECTION
To the Qualified Electors:
NOTICE IS HEREBY GIVEN, That a Special Election will be held in the TOWNSHIP OF DEXTER (Precinct No. 1) County of Washtenaw, State of Michigan at DEXTER TOWNSHIP HALL Quigley Road at Dexter Townhall Road within said Township on TUESDAY, NOVEMBER 3, 1964

GENERAL ELECTION
To the Qualified Electors:
NOTICE IS HEREBY GIVEN, That a General Election will be held in the TOWNSHIP OF DEXTER (Precinct No. 1) State of Michigan at DEXTER TOWNSHIP HALL Quigley Road at Dexter Townhall Road within said Township on TUESDAY, NOVEMBER 3, 1964

GENERAL ELECTION
To the Qualified Electors:
NOTICE IS HEREBY GIVEN, That a General Election will be held in the TOWNSHIP OF FREEDOM (Precinct No. 1) State of Michigan at FREEDOM TOWNSHIP HALL Pleasant Lake Road at Corner of Lima Center Road within said Township on TUESDAY, NOVEMBER 3, 1964

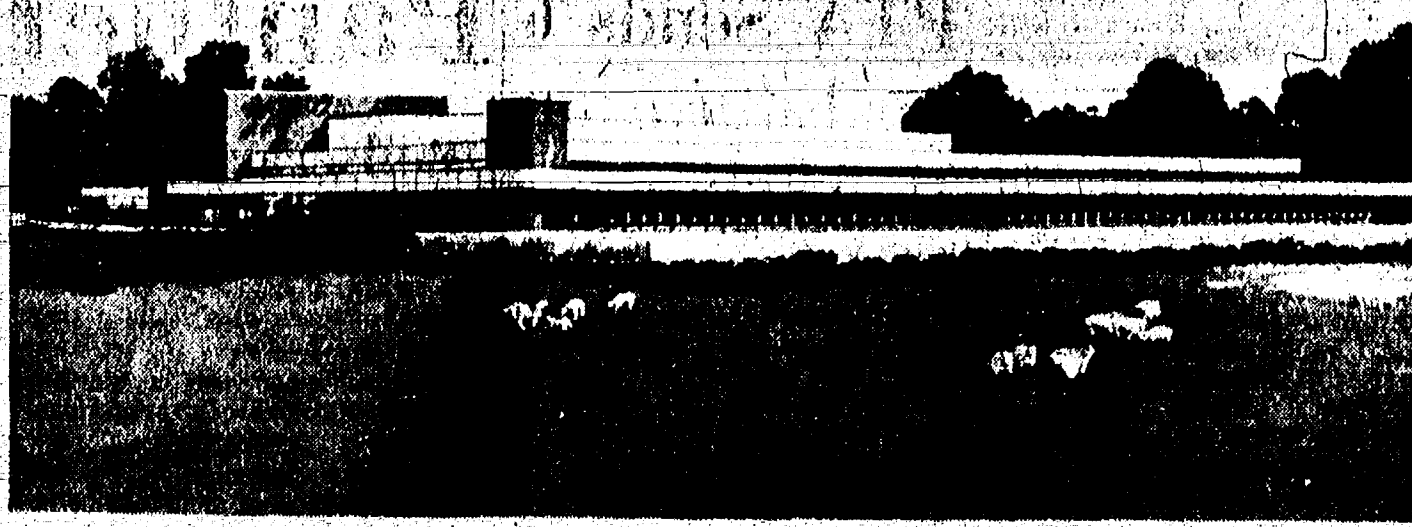
SPECIAL ELECTION
To the Qualified Electors:
NOTICE IS HEREBY GIVEN, That a Special Election will be held in the TOWNSHIP OF FREEDOM (Precinct No. 1) County of Washtenaw, State of Michigan at FREEDOM TOWNSHIP HALL Pleasant Lake Road at Corner of Lima Center Road within said Township on TUESDAY, NOVEMBER 3, 1964

ated Campaign Waged County Sheriff Position

"We allow an officer to keep any part of the uniform that we do not think is in condition to be worn on duty any longer," Petersen said. "Perhaps this is what Mr. Harvey is displaying."

Construction Underway on New Plant for University Microfilms

University Microfilms, Inc., of Ann Arbor, has begun constructing a \$1.1 million plant near Zeeb and Pratt Rds. and I-94 in Scio township. Ground was broken early this month.



UNIVERSITY MICROFILMS, INC., Ann Arbor, is building a new \$1.1 million plant on 28 acres in Scio township at the I-94, Zeeb-Rd. interchange.

Proposal on Ballot To Raise Tax Limitation to 18 Mills

On their Nov. 3 ballots, Washtenaw county voters will find this question: "Shall separate tax limitations be established for an individual period, or until altered by the voters of the county, for the County of Washtenaw and the townships and school districts within the county, the aggregate of which shall not exceed 18 mills."

Another deputy said he was hired without a physical examination or a written test and was given no training. The ex-officer said he had seen many new men hired without training given to them.

The building will contain 70,000 square feet of floor space, nearly three times the space of the present UMI plant and office building. Scheduled for completion in one year, it will accommodate all county departments. When the move takes place, UMI's work force is expected to rise from 230 to approximately 300 employees.

The company's expansion is backed by the Xerox Corp., which acquired ownership of UMI in 1962. Power started University Microfilms, Inc., in 1938 and pioneered in the use of microfilm technology for the preservation of out-of-print books, periodicals, scientific and technical journals and other printed materials.

This proposal is based on one of the clauses in Michigan's 1963 Constitution designed to strengthen local government. So far, Washtenaw county is the only place where an 18-mill proposal has been placed on the ballot.

Property taxes levied in the county would not automatically jump from 15 to 18 mills per \$1,000 of assessed, equalized valuation. But requests for extra-voted millage would probably become less frequent, because long-range planning would no longer be hampered by the local battle for millage between school and county officials, according to school officials.

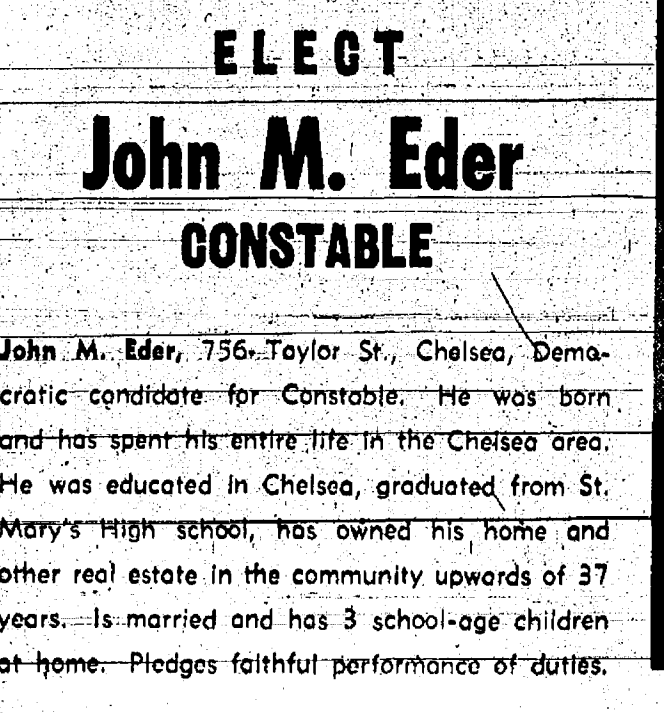
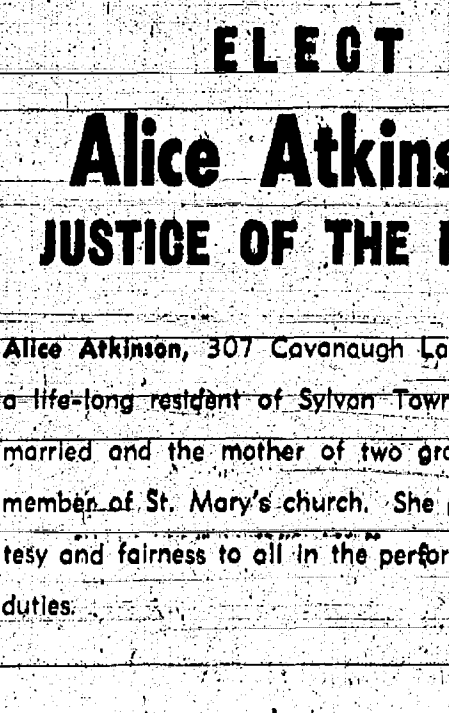
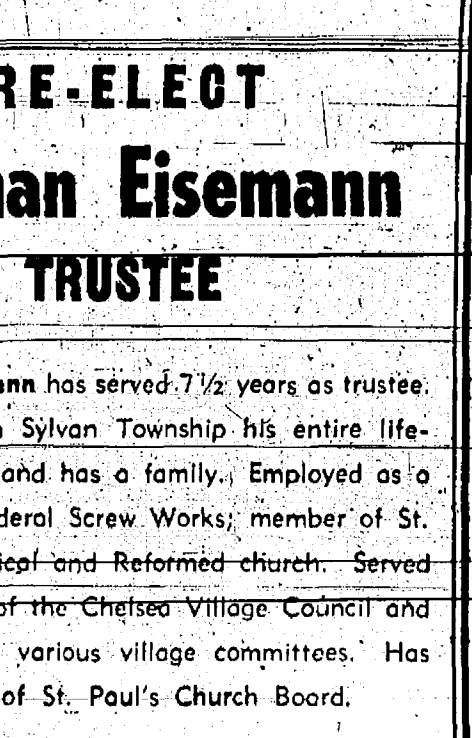
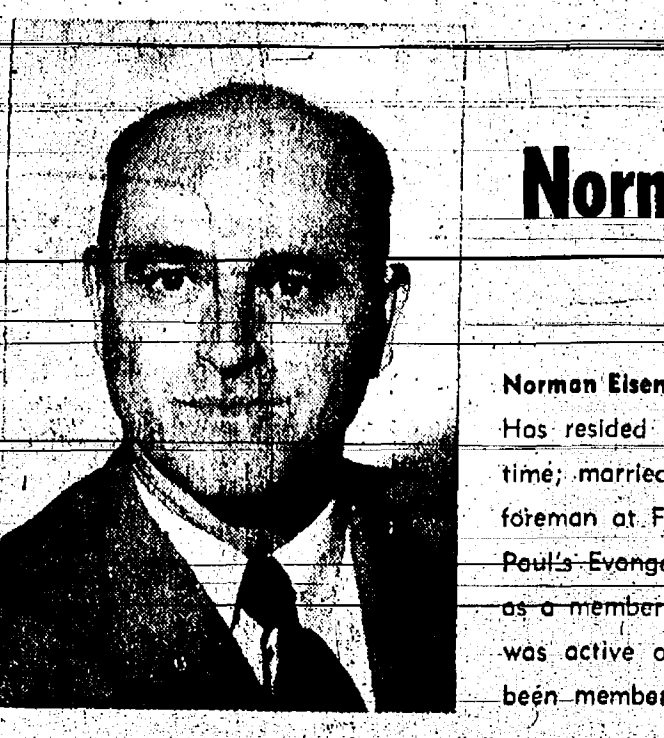
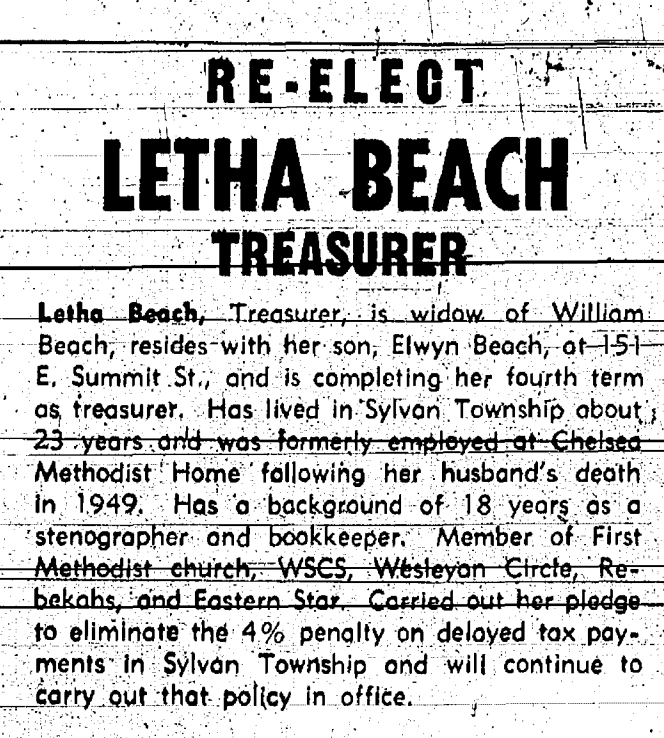
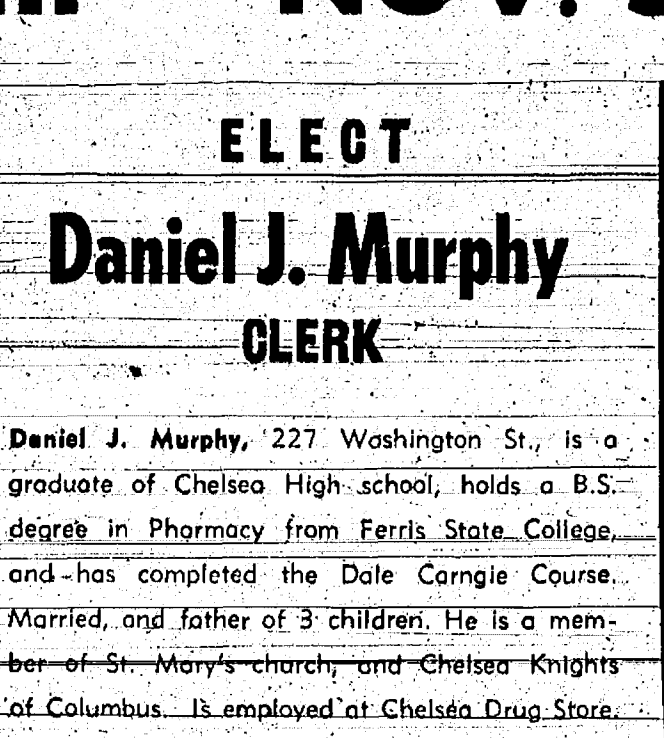
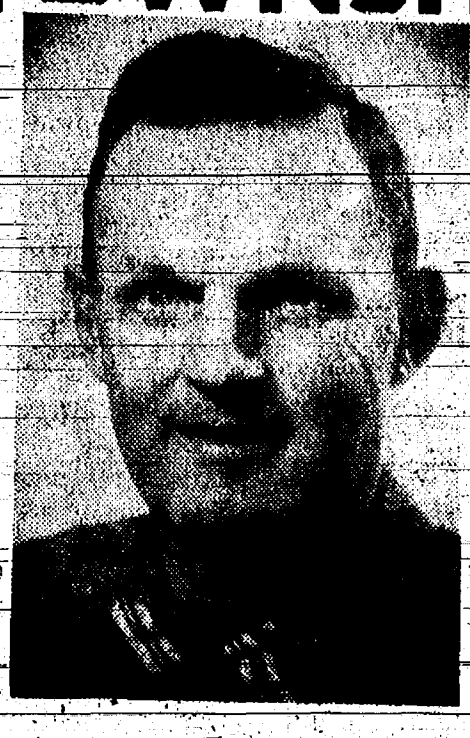
VOTE NO on STATE (OFFICIAL) REFERENDUM The Massachusetts Ballot. This is the recommendation of 26 prominent political scientists from five Michigan universities. YOU WANT to preserve your right to vote straight Party ticket with one vote. YOU WANT to avoid confusion in casting ballot. YOU WANT to preserve a responsible two-party system. YOU DON'T WANT some of your most important voting rights taken away. YOU DON'T WANT to stand in long lines on election day. YOU DON'T WANT to cast up to 50 individual votes in a 3-minute time limit. VOTE AGAINST STATE REFERENDUM on the Massachusetts Ballot.

13 Persons Start Knitting Class Thursday Evening. Thirteen persons were registered for the knitting class which began last Thursday evening at the Chelsea High school home economics room under the Adult Education program.

Good Turnout Is Recorded in Primary Election. Lansing — Percentage of voters who were registered in April and cast votes in the primary election this past September hit a six-year high total, figures released by the Secretary of State indicated.

DIRKSEN LAUDS MEADER. Senator Everett McKinley Dirksen, Illinois, Minority Leader of the Senate and member of Senate Committees on Finance and the Judiciary. "GEORGE MEADER has acquitted himself with great distinction in the House of Representatives and merits the confidence and esteem not only of his constituents, but of the people of Michigan and of the United States."

VOTE DEMOCRATIC SYLVAN TOWNSHIP - NOV. 3, 1964. RE-ELECT Maurice J. Hoffman SUPERVISOR. ELECT Daniel J. Murphy CLERK. RE-ELECT LETHA BEACH TREASURER. RE-ELECT Norman Eisemann TRUSTEE. ELECT Alice Atkinson JUSTICE OF THE PEACE. ELECT John M. Eder CONSTABLE. ELECT JOHN PIERSON CONSTABLE. WE PLEDGE: 1. Continued good government. 2. Continued policy of eliminating 4% penalty on late tax payments. 3. Publication of Township Board minutes and proceedings. 4. More convenient voter registration. For Transportation to the Polls on Election Day PHONE 475-7229



Community Calendar



Election Day luncheon, Tuesday, Nov. 3, 11 a.m. at the home of Mrs. Lucille Olson...

Friendly club Monday, Nov. 2, 7:30 p.m. at the home of Mrs. Beulah Knott...

AREA DEATHS

Mrs. Galbraith Gorman Dies Last Wednesday Following Long Illness... Mrs. Julia A. Gorman, 87, of 808 Hpron St. died Wednesday...

Ralph H. Ennest Former Marine Engineer Dies at Methodist Home... Ralph H. Ennest, former marine engineer and St. Clair automobile agency owner...

Mrs. Eugene Anderson Dies Friday Morning At Ann Arbor Hospital... Mrs. Eugene Anderson, 47, of 780 N. Main St. died Friday morning...

Redecorating Job Complete

The sanctuary redecorating at the First Methodist church is to be completed this week, according to the Schanbacher Co. doing the work...

CONGRESS ADJOURNS Congress adjourns Oct. 8, and legislators will rush into campaign headquarters for the coming election in November...

Advertisement for Black & Decker Power Tools. Includes images of a saw, sander, router, and drill. Text: 'You can do so much YOURSELF! With POWER TOOLS... Our day-to-day prices on BLACK & DECKER POWER TOOLS represents substantial savings to both the professional and homeowner...'

Large advertisement for RCA Victor televisions. Features 'BIG 19" SCREEN RCA VICTOR Portable' and 'More People Own RCA VICTOR Than Any Other Television...'. Includes prices like \$149.95 and \$189.95. Text: 'FEATURING RCA VICTOR... THE MOST TRUSTED NAME IN TELEVISION... ALWAYS BETTER BUYS AT GAMBLES'.

Advertisement for Reddy Heater. Text: 'REDDY HEATER PUTS OUT 262° OF CLEAN HEAT\* and is so portable it goes anywhere... \$99.95 ONLY... GAMBLE'S'.

Advertisement for Frigid Products. Text: '-FOR-COLOR TELEVISION At Its Finest -SEE- FRIGID PRODUCTS... \$450.00 with trade'.



# A SUPERMARKET THAT IS JUST A LITTLE BETTER

**STORE HOURS:**  
 Monday thru Wednesday 9 a.m. to 6 p.m.  
 Thursday & Friday 9 a.m. to 9 p.m.  
 Saturday 8 a.m. to 9 p.m.  
 OPEN SUNDAY 10 a.m. to 6 p.m.

# Stop & Shop

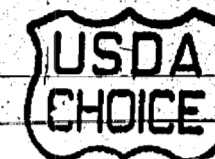
14901 Old U.S.-12  
 Corner at M-52  
 Chelsea

Our Friendly,  
 Competent Meat  
 cutting experts  
 are always on duty



All Stop and Shop Meat Is  
 Cut to Customer's Specifications

Select your Meat  
 the same way  
 your Mother did



"TRIPLE R FARMS" U.S. CHOICE

## ROUND STEAK

**79<sup>c</sup>**  
 lb.

"TRIPLE R FARMS" U.S. CHOICE

## SIRLOIN STEAK

**93<sup>c</sup>**  
 lb.

"TRIPLE R FARMS" U.S. CHOICE

## RUMP ROAST

**93<sup>c</sup>**  
 lb.

## SIRLOIN TIP ROAST

## DEL MONTE SALE

"TRIPLE R FARMS" LEAN, TENDER, DELICIOUS

Cube Steaks **99<sup>c</sup>**  
 lb.

"TRIPLE R FARMS"  
 Ground Round Steak **79<sup>c</sup>**  
 lb.

"TRIPLE R FARMS" BONELESS  
 Stewing Beef **79<sup>c</sup>**  
 lb.

STOP & SHOP'S HOME MADE  
 Pork Sausage **39<sup>c</sup>**  
 lb.

"TRIPLE R FARMS" MICHIGAN GRADE 1  
 Polish Sausage **49<sup>c</sup>**  
 lb.

"TRIPLE R FARMS"  
 Hickory Smoked Picnics **31<sup>c</sup>**  
 4 to 6-lb. Average

Del Monte White Kernel or Cream Style Corn	303 CAN	16 <sup>c</sup>
Del Monte Peas	303-CAN	19 <sup>c</sup>
Del Monte Peas & Carrots	303 CAN	18 <sup>c</sup>
Del Monte Catsup	14-OZ. BOTTLE	13 <sup>c</sup>
Del Monte Peaches Halves or Slices	303 CAN	18 <sup>c</sup>
Del Monte Fruit Cocktail	303 CAN	23 <sup>c</sup>
Del Monte Tomato Juice	46-OZ. CAN	25 <sup>c</sup>



PURE VEGETABLE SHORTENING  
**SPRY** **59<sup>c</sup>**  
 42-OZ. CAN

LAND O' LAKES SWEET CREAM  
**BUTTER** **68<sup>c</sup>**  
 1-LB. CARTON

FLORIDA NEW CROP SEEDLESS

**Grapefruit**  
**5 for 29<sup>c</sup>**

**DISCOUNT PRICES**  
 on ALL Health and Beauty Aids  
 100 COUNT ONE-A-DAY VITAMINS  
 Reg. Price **\$2.94** Our Price **\$1.99**

WE RESERVE THE RIGHT TO LIMIT QUANTITIES

MAXWELL HOUSE

## COFFEE

ALL GRINDS **65<sup>c</sup>**  
 lb.

Prices Effective Wednesday,  
 Oct. 28 thru Tuesday, Nov.  
 3, 1964.

PILLSBURY or GOLD MEDAL

## FLOUR

5-LB. BAG **39<sup>c</sup>**

Hekman Saltines 1-Lb. Box **26<sup>c</sup>**

SPECIAL OFFER!  
 Giant Size Oxydol **69<sup>c</sup>**

SPECIAL OFFER!  
 Salvo DETERGENT TABLETS Giant Size **62<sup>c</sup>**

LIBBY'S Pineapple Sliced - Chunks - 4 15 1/4 Oz. Cans **\$1.00**

WILSON'S ALL STAR Chocolate Milk Qt. **19<sup>c</sup>**

Chocolate Milk Ctn. **19<sup>c</sup>**

Fig Newtons 1-Lb. Cello **39<sup>c</sup>**

SUNSHINE Hydrox Cookies 1-Lb. Cello **45<sup>c</sup>**

SEALTEST ASSORTED FLAVORS Popsicles 12 for **39<sup>c</sup>**

KRUNCHEE Potato Chips 14-Oz. Bag **59<sup>c</sup>**



### gregational Youth Plan Monday Night Supper Party

ggregation youth group is planning a supper party for Monday night, said president [Name] after Sunday night's [Name].

The supper party is to be an opportunity to get better acquainted with other church members, to introduce new members to the group, and to do some eating and drinking together. The group took recommendations of the officers and will be held at the [Name] on Monday night, Nov. 2, at 7:30 p.m. The menu will be mainly [Name] as ping-pong, shuffleboard, etc., along with records and dancing. Visel is in charge of the program.

The program will be mainly [Name] as ping-pong, shuffleboard, etc., along with records and dancing. Visel is in charge of the program.

On Monday night, Nov. 2, at 7:30 p.m., the group will be held at the [Name]. The menu will be mainly [Name] as ping-pong, shuffleboard, etc., along with records and dancing. Visel is in charge of the program.

### + Services in Our Churches +

**ZION LUTHERAN CHURCH** (Rogers Corners)  
The Rev. U. J. Renner, Pastor  
Saturday, Oct. 31—  
9:30 a.m.—Junior catechism class.  
10:45 a.m.—Senior catechism class.  
Sunday, Nov. 1—  
9:00 a.m.—Sunday school.  
10:15 a.m.—Worship service.  
Brought Christ into Higher Education.  
Monday, Nov. 2—  
9:30 a.m.—Junior choir practice.  
8:00 p.m.—Senior choir practice.  
Wednesday, Nov. 4—  
9:00 a.m.—Women of Zion meetings.  
2:00 p.m.—Afternoon circle.  
7:45 p.m.—Evening circle.  
Thursday, Nov. 5—  
8:00 p.m.—Men's Brotherhood.

**ST. PAUL'S EVANGELICAL AND REFORMED CHURCH** (United Church of Christ)  
The Rev. Paul M. Schnake, Pastor  
Thursday, Oct. 29—  
7:00 p.m.—Mailing committee.  
7:00 p.m.—Junior choir.  
7:45 p.m.—Senior choir.  
Saturday, Oct. 31—  
9:30 a.m.—Youth choir.  
10:00 a.m.—Catechism class.  
Sunday, Nov. 1—  
Reformation Sunday.  
8:15 a.m.—Early worship service.  
9:30 a.m.—Church school.  
10:15 a.m.—Second worship service.  
7:00-9:00 p.m.—Youth Fellowship.  
Wednesday, Nov. 4—  
7:30 p.m.—Church Council meeting.

**CONGREGATIONAL CHURCH** (United Church of Christ)  
The Rev. R. A. J. Livingston, Pastor  
Thursday, Oct. 29—  
7:30 p.m.—Senior choir rehearsal.  
Friday, Oct. 30—  
UNICEF "trick or treats" night.  
Sunday, Nov. 1—  
10:00 a.m.—Church school and worship service. Sermon: "Here I Stand."  
Wednesday, Nov. 4—  
7:30 p.m.—Every member Canvass training session.

**ST. MARY'S CATHOLIC CHURCH**  
The Rev. Fr. Francis Maliszewski  
Sunday, Nov. 1—  
Masses at 6:30 a.m., 8:00 a.m., 10:00 a.m., 11:30 a.m.

**METHODIST HOME CHAPEL**  
The Rev. E. J. Weiss, Pastor  
The Rev. John Fall, assistant  
The Rev. Wm. Johnson, chaplain  
Sunday, Nov. 1—  
8:00 a.m.—Worship service.

**ST. THOMAS EVANGELICAL LUTHERAN** (Freedom Township)  
The Rev. H. Spomer, Pastor  
Sunday, Nov. 1—  
10:00 a.m.—Worship service.  
11:00 a.m.—Sunday school.

**CHURCH OF CHRIST**  
13661 Old US-12, East  
Murray S. Hudgins, Minister  
Sunday, Nov. 1—  
10:00 a.m.—Bible study.  
11:00 a.m.—Worship service.  
6:00 p.m.—Worship service.  
Bible study each Thursday at 7 p.m.

**FIRST METHODIST CHURCH**  
The Rev. James A. Craig, Pastor  
Thursday, Oct. 29—  
7:00 p.m.—High school choir (grades 7-12).  
8:00 p.m.—Senior choir.  
Friday, Oct. 30—  
1:00 a.m.—Community Blood Bank at the Congregational church.  
Saturday, Oct. 31—  
9:00 a.m.—Junior choir (grades 3-5).  
10:00 a.m.—Primary choir (grades kindergarten to 2).  
8:00 p.m.—Junior High MYF Halloween party at the Ben Bowers.  
Sunday, Nov. 1—  
9:00 a.m.—Church school for all ages.  
10:00 a.m.—Church school (for nursery - 6).  
10:00 a.m.—Worship service, the Rev. John Fall, preaching.  
7:00 p.m.—Junior High MYF.  
7:00 a.m.—Senior High MYF.  
Tuesday, Nov. 3—  
7:00 a.m.—Men's breakfast, educational unit.  
8:00 p.m.—Wesleyan Service Guild.  
1:30 p.m.—Miss Marion Shaw, WSCS—missionary, will speak at Northwest Stockbridge.  
Wednesday, Nov. 4—  
8:00 p.m.—WCS general meeting. Topic: "The Young American Mother—Who Is She?" Mrs. Arthur Stoll.

**NORTH LAKE METHODIST CHURCH**  
The Rev. George Nevin, Pastor  
Sunday, Nov. 1—  
9:30 a.m.—Worship service.  
10:30 a.m.—Sunday school.  
MYF meeting the first Sunday of the month at 8 p.m.

**FIRST ASSEMBLY OF GOD CHURCH**  
14900 Old US-12  
The Rev. Harold S. Blotta, Pastor  
Sunday, Nov. 1—  
9:45 a.m.—Sunday school.  
11:00 a.m.—Worship service.  
7:00 p.m.—Evening service.  
Wednesday, Nov. 4—  
7:30 p.m.—Prayer service.

**CHELSEA BAPTIST CHURCH**  
The Rev. Elmer S. Steenson, Pastor  
Sunday, Nov. 1—  
10:00 a.m.—Sunday school.  
11:00 a.m.—Worship service.  
Nursery care available during Sunday school and worship service.  
8:00 p.m.—Young people's service.  
7:00 p.m.—Evening service Prayer meeting each Wednesday at 7:30 p.m.

**FIRST UNITED PRESBYTERIAN CHURCH UNADILLA**  
The Rev. John Jeffrey, Pastor.  
Sunday, Nov. 1—  
9:00 a.m.—Church school.  
10:45 a.m.—Worship service.  
Tuesday, Nov. 3—  
8:30 p.m.—Choir.  
Thursday, Nov. 5—  
8:00 p.m.—Session.  
Saturday, Nov. 7—  
Fun Festival, Dinner 6-8 p.m. Free will offering.

**NORTH SHARON COMMUNITY BIBLE CHURCH**  
Sylvan and Washburn Roads  
The Rev. Paul Collins  
Sunday, Nov. 1—  
10 a.m.—Sunday school.  
11 a.m.—Worship service.  
7 p.m.—Evening service  
Prayer meeting each Wednesday evening at 7:30 o'clock.

**FIRST CHURCH OF CHRIST SCIENTIST**  
1833 Washtenaw Ave., Ann Arbor  
Sunday, Nov. 1—  
9:30 a.m.—Sunday school.  
11:00 a.m.—Morning service. Bible lesson—sermon topic: "Everlasting Punishment." Golden text: "Whom the Lord loveth he correcteth; even as a father the son in whom he delighteth" (Prov. 3:12).

### Just A Minute . . .

By the Rev. James A. Craig

It has been called a national calamity. Others have said that a political campaign is a spasm suffered by the country every four years.

The climax comes in just a few days. Then the "tumult and the shouting shall cease." Campaigners and their crews will depart and we shall forget. Thank goodness!

But now the tumult and the shouting continues. The noise nearly drowns out our senses. Some comfort might result if we could turn it off.

We can't and we shouldn't. Dean Sayre, of Washington Cathedral, might go fishing on Nov. 3. More are tempted to. They forget something from the Old Testament.

The people of Moses had a choice to make. It wasn't an easy one for them. And it wasn't just whether they should go ahead or go back.

Their choice determined the future of their country from that day to this. Try as they did to avoid it they each had to decide. Next Tuesday you, too, must make a decision.

For a Christian there can be no putting it off. One thing the Christian faith requires of its people is good citizenship. One thing good citizenship requires this year is your vote.

TROOPERS LOSE 3 TONS  
Atlanta, Ga.—Georgia State patrolmen were ordered to lose weight last September or they couldn't get new uniforms this fall. Of the 418 patrolmen, 800 were over weight, and they lost a total of three tons. One trooper lost 20 pounds. The only hitch—they were measured for new uniforms last year and alterations must be made before they can be worn.

### Nearly One-Half of Port Huron-Seattle Freeway Completed

Port Huron — Construction of a 2,200-mile superhighway from Port Huron to the West Coast is expected to pass the half-way mark by the end of this year.

With the opening of 7.5 miles of I-94 here recently, more than 960 miles of the route between Port Huron and Seattle, Wash., is now open to traffic, a survey conducted by the Michigan State Highway Department showed.

Reports from all of the states through which the freeway passes indicate an additional 180 miles will be opened by the end of the year so that on Jan. 1, 1965, approximately 1,100 miles of the 2,200-mile route will be open to traffic.

Try a Standard Want Ad next time.

### BAILEY'S RESTAURANT

Corner of Clear Lake Road and I-94

## Good Home Cooking

SUNDAY, NOVEMBER 1

SWISS STEAK  
Vegetable - Tossed Salad - Hot Rolls.  
**\$1.40**

Nov. 8—Sirloin Steak, \$2.00    Nov. 15—Swiss Steak

## RESOLUTION

BE IT RESOLVED and it is hereby resolved that sidewalk be constructed within the Village of Chelsea during the year 1964 in the area hereafter listed; one-half cost and expense thereof to be defrayed by a special assessment pro-rated according to abutting frontage; that an estimate of the expense thereof is to be made and placed on file with the Village Clerk for public examination forthwith; that the council will at its regular meeting of Nov. 3, 1964 at 8 p.m. meeting consider objections to the making of said improvement.

**SIDEWALK:** North side of Van Buren St. from existing walk east to the most easterly line of the Thomas Eisele property.

## VILLAGE OF CHELSEA

GEORGE WINANS, Clerk

## CUSTOM SLAUGHTERING

By Appointment — Call GR 5-8280.

## COMPLETE MEAT PROCESSING

## RIGID PRODUCTS LOCKER DEPARTMENT

On Hallowe'en when the witching hour strikes, serve milk, the drink that everyone always likes.

Call GR 5-5771 for Regular Home Delivery

## WEINBERG DAIRY

QUALITY PASTEURIZED DAIRY PRODUCTS  
D US-12    PHONE-GR-5-5771

Re-elect Republican Congressman

## GEORGE MEADER

Re-elect him on November 3rd

George Meader is a "Doer!"

Re-elect him on November 3rd

Dr. Walter Judd, Governor George Romney, and Congressman George Meader.  
(Paid for by Republican Congr. Committee, Meader Campaign, Joe Hooper, Chairman)

## DAIRY and HERD TESTING

Supervised Testing  
Owner Sampler  
Testing

PAUL C. CHAFFEE  
RT. 1 DEXTER, MICH.  
Phone-Chelsea 475-8752  
Area Code 313  
Dealer for

Weco Milk - Veyor  
the practical "Pipeline"

Promote Circuit Judge

LOUIS D. MCGREGOR

OF FLINT TO THE NEW COURT OF APPEALS

NON-PARTISAN

"Judicial Experience Necessary for the New Court of Appeals"

## In YOUR Heart YOU Know He's RIGHT!

A TEAM FOR FREEDOM

★ of the individual  
★ in our economic system  
★ for the people of the world

MAKE YOUR VOTE COUNT

VOTE REPUBLICAN, NOV. 3  
Chelsea Citizens for Goldwater - Miller Committee

J. RUDD, Vice-Chairman    BRUCE KLEIN, Chairman    R. RUDD, Treasurer  
C. RUDD, Secretary

We, the undersigned, urge the election of Barry M. Goldwater for President:

Gerald Proctor	H. Robinson	Carolyn Rudd	Henry Rybka	Mrs. Paul J. Collins
Rebecca Proctor	John C. Schneider	George R. Slane	Helen Rybka	Mrs. Marilyn McAtoo
Robert K. Schneider	Ethel E. Schneider	Dorothy DeSmyther	Richard A. Rudd	Floyd Proctor
Harold A. Davis	Billie Schneider	C. R. Eder	Harry E. Gish	Fay Proctor
James D. Dettling	John J. Rudd	Dolores Bott	Allen Postiff	Minnie Belle Curtis
Floyd J. Rietmiller	Laurence T. McAtoo	D. J. White	Wm. J. Keller, Jr.	Norman Curtis
Jerry F. Satterthwaite	Gale DeSmyther	Ray Lutovsky	Don Fectka	Finis Case
Joseph L. Parker	Dale L. Ebersak	Jerry Brayton	Fred Irwin	Mrs. Joseph Geor
Donnie Marshall	Carl E. LaRoe	James Eder	Joseph Geor	Noel Dunbar
Donald Schneider	Charles R. Heard	Kenneth Proctor	Paul J. Collins	Bruce N. Klein
Lawrence Willett	Kermit Brown	H. W. Minick	Albert Herman	Harold C. Powers
				Judith A. Klein

CHELSEA VILLAGE COUNCIL PROCEEDINGS

Council Room October 6, 1964 Regular Session. A discussion was held regarding the proposed construction of 110 feet of curb and 140 feet of sidewalk to reconnect the section removed for the construction of the culvert across the McKinley Street bridge.

A discussion was held regarding the proposed construction of 110 feet of curb and 140 feet of sidewalk to reconnect the section removed for the construction of the culvert across the McKinley Street bridge.

elect ELY PETERSON to the U.S. SENATE. Includes a drawing of a sunflower.

Proclamation. WHEREAS the week of October 4-10 is being observed as National Pharmacy Week under the auspices of the American Pharmaceutical Association...

A proposed ordinance to regulate and license bicycles within the Village. No official action was taken at this time.

Motion by Wood, supported by Weber, to authorize and direct the clerk to issue checks in payment of bills as submitted. Roll call: Yeas all. Motion carried.

4-H Clubs. Mrs. Robert L. Foster and Mrs. George Ellenwood have volunteered to lead a 4-H club which has selected the name "Needle Beate Bugs."

Historical Events. The Province of Carolina was separated from Virginia by royal grant to Sir Robert Heath, October 30, 1629. October 31 is Halloween Day.

Elementary HONOR ROLL. First Marking Period Oct. 16, 1964. GRADE 5. "A" - Grace Howard. "B" - Dabble Barker, Jeremy Birman, Melvin Bus, Cynthia Chandler, Garry Collins, Bobby Craft, Brad Curtis, Terri Eisenmann, Sherree Freeman, Daniel Gault, Judy Grau, Maryanne Hess, Danny Hoover, Larry Hopkins, Leslie Irving, Karen Johnson, Kenneth Kusre, Dennis Landwehr, Chick Lane, Kathy Leach, Janice McGaw, Robert Mester, Greg Osborne, Iva Patrick, Thomas Pettes, Keith Pfeifle, Joan Platt, David Porath, Cynthia Reynolds, Susan Rogers, Karen Schaefer, Kathryn Schaefer, Janice Schenk, Jacqueline Schiller, Rebecca Schnake, Dean Schoenberg, Janet Sibley, Betty Snyder, Mark Thomson, Wayne Welton, Norbert Weber, Cheryl Wilkerson, Robert Wojcicki.

Metric Majority. More than 90 percent of the world's population - some 77 countries - live and do business by the metric system. This includes all Europe, Russia, China, Japan, India, and Central and South America.

Cub Scout News. DEN I. PACK 415. Cub Scouts of Den I. Pack 415 met at the home of Mrs. Edgars Atkinson at Cavanaugh Lake Thursday afternoon at 4:30.

Brownies... TROOP 145. Brownies of Troop 145 met in the Methodist church social center Tuesday, Oct. 20, with 13 present. New Brownies received their promises.

TROOP 247. Brownies Troop 247 met Tuesday to invest 14 new Brownies. The new Brownies getting their pins are: Diane Akim, Susan Allen, Cindy Frisbie, Linda Hafner, Lois Lovely, Michelle McClain, Kim Miles, Wendy Olsinski, Joanne Popovich, Shelly Parath, Vicki Sager, Sharon Schiller, Denise Smyth and Kathy Yoell.

TRAPPED BY SHAVE. Miami, Fla. - Marcus Clifton from a state prison with other men and had escaped into a barber shop and got a shave. He was recognized by a detective and landed back in prison by a shave.

At the Oct. 22 meeting Terry Tison joined the group as den chief. Den I was presented a solid oak flag base with the den number painted on it. This was a gift from Mr. Carmer Slocum.

PACK 485. At a pack meeting of Cub Scout Pack 485, held Tuesday evening at North Elementary school, the program included a letter game for the adults present; group singing; a "parade of masks" in which Tommy Skittenhelm won first place and was awarded a Cub Scout pocket piece and Robert Weir was runner-up; a shoe box relay race; and an apple-on-a-string game in recognition of the Halloween season.

SPECIAL ELECTION. To the Qualified Electors: NOTICE IS HEREBY GIVEN. That a Special Election will be held in the TOWNSHIP OF SHARON (Precinct No. 1) County of Washtenaw, State of Michigan at SHARON TOWNSHIP HALL within said Township on TUESDAY, NOVEMBER 3, 1964. FOR THE PURPOSE OF VOTING ON THE FOLLOWING RESOLUTION: RESOLUTION. WHEREAS, the Tax Allocation Board for the County of Washtenaw has presented a petition to the Washtenaw County Board of Supervisors to place before the voters of Washtenaw County the question of establishing separate tax limitation millage rates for an indefinite period, or until altered by the voters of the county, for the County of Washtenaw and the townships and school districts within the county, the aggregate which shall not exceed 18 mills, as follows: County of Washtenaw 5.50 Townships 1.16 Intermediate School Districts .12 School Districts 11.22 TOTAL 18.00 AND WHEREAS, said petition was presented in accordance with the statutes in such case made and provided. NOW THEREFORE BE IT RESOLVED that the question of adopting separate tax limitations shall be submitted to the registered and qualified electors of the County of Washtenaw at the next general election in the following form: Shall separate tax limitations be established for an indefinite period, or until altered by the voters of the County, for the County of Washtenaw and the townships and school districts within the county, the aggregate of which shall not exceed 18 mills as follows: County of Washtenaw 5.50 Townships 1.16 Intermediate School Districts .12 School Districts 11.22 TOTAL 18.00 Also Any Additional Amendments or Propositions That May Be Submitted. Notice Relative to Opening and Closing of the Polls. ELECTION LAW, ACT 116, P. A. 1954. SECTION 720. On the day of any election, the polls shall be opened at 7 o'clock in the forenoon, and shall be continuously open until 8 o'clock in the afternoon and no longer. Every qualified elector present and in line at the polls at the hour prescribed for the closing thereof shall be allowed to vote. THE POLLS of said election will be open at 7 o'clock a.m. and will remain open until 8 o'clock p.m. of said day of election. Duane Haselschwardt, Township Clerk

GENERAL ELECTION. To the Qualified Electors: NOTICE IS HEREBY GIVEN. That a General Election will be held in the TOWNSHIP OF SHARON (Precinct No. 1) State of Michigan AT SHARON TOWNSHIP HALL within said Township on TUESDAY, NOVEMBER 3, 1964. For the Purpose of Electing the Following Officers, viz: NATIONAL President and Vice-President of the United States. STATE Governor and Lieutenant Governor, Secretary of State, Attorney General, Eight Members of the State Board of Education, Two Trustees of Michigan State University, Two Governors of Wayne State University. CONGRESSIONAL United States Senator, Representative in Congress. LEGISLATIVE State Senator, State Representative. COUNTY Prosecuting Attorney, Sheriff, County Clerk, County Treasurer, Register of Deeds, Drain Commissioner, Surveyor, and such other Officers as are elected at that time. FOR THE PURPOSE OF ELECTING THE FOLLOWING OFFICERS, VIZ: NON-PARTISAN OFFICERS Three Judges of the Court of Appeals, Judge of Probate, Circuit Judge (To Fill Vacancy). FOR THE PURPOSE OF ELECTING THE FOLLOWING OFFICERS, VIZ: TOWNSHIP OFFICERS Supervisor, Township Clerk, Township Treasurer, 1 Trustee, 1 Justice of the Peace, 4 Constables. AND TO VOTE ON THE FOLLOWING PROPOSAL: A Referendum on Legislation. Also Any Additional Amendments or Propositions That May Be Submitted. Notice Relative to Opening and Closing of the Polls. ELECTION LAW, ACT 116, P. A. 1954. SECTION 720. On the day of any election the polls shall be opened at 7 o'clock in the forenoon, and shall be continuously open until 8 o'clock in the afternoon and no longer. Every qualified elector present and in line at the polls at the hour prescribed for the closing thereof shall be allowed to vote. THE POLLS of said election will be open at 7 o'clock a.m. and will remain open until 8 o'clock p.m. of said day of election. Duane Haselschwardt, Township Clerk

GENERAL ELECTION. To the Qualified Electors: NOTICE IS HEREBY GIVEN. That a General Election will be held in the TOWNSHIP OF LIMA (Precinct No. 1) State of Michigan AT LIMA COMMUNITY HALL within said Township on TUESDAY, NOVEMBER 3, 1964. For the Purpose of Electing the Following Officers, viz: NATIONAL President and Vice-President of the United States. STATE Governor and Lieutenant Governor, Secretary of State, Attorney General, Eight Members of the State Board of Education, Two Trustees of Michigan State University, Two Governors of Wayne State University. CONGRESSIONAL United States Senator, Representative in Congress. LEGISLATIVE State Senator, State Representative. COUNTY Prosecuting Attorney, Sheriff, County Clerk, County Treasurer, Register of Deeds, Drain Commissioner, Surveyor, and such other Officers as are elected at that time. FOR THE PURPOSE OF ELECTING THE FOLLOWING OFFICERS, VIZ: NON-PARTISAN OFFICERS Three Judges of the Court of Appeals, Judge of Probate, Circuit Judge (To Fill Vacancy). FOR THE PURPOSE OF ELECTING THE FOLLOWING OFFICERS, VIZ: TOWNSHIP OFFICERS Supervisor, Township Clerk, Township Treasurer, 1 Trustee, 1 Justice of the Peace, 4 Constables. AND TO VOTE ON THE FOLLOWING PROPOSALS: A Referendum on Legislation. AND TO VOTE ON THE FOLLOWING PROPOSAL: "Shall the sale of spirits in addition to beer and wine be permitted for consumption on the premises within the Township of Lima under the provisions of the law governing same?" YES NO. Also Any Additional Amendments or Propositions That May Be Submitted. Notice Relative to Opening and Closing of the Polls. ELECTION LAW, ACT 116, P. A. 1954. SECTION 720. On the day of any election the polls shall be opened at 7 o'clock in the forenoon, and shall be continuously open until 8 o'clock in the afternoon and no longer. Every qualified elector present and in line at the polls at the hour prescribed for the closing thereof shall be allowed to vote. THE POLLS of said election will be open at 7 o'clock a.m. and will remain open until 8 o'clock p.m. of said day of election. DUANE LUICK, Township Clerk

For Good Government Elect Lima Township Republican Candidates. Supervisor Duane Luick. Clerk Hilda Pierce. Treasurer Walter Wolfgang. Justice of the Peace Harry P... Constable John M. Miller. LIMA TOWNSHIP ELECTION TUESDAY, NOV. 3, 1964 at Lima Community Hall

SPECIAL ELECTION. To the Qualified Electors: NOTICE IS HEREBY GIVEN. That a Special Election will be held in the TOWNSHIP OF LIMA (Precinct No. 1) County of Washtenaw, State of Michigan at LIMA COMMUNITY HALL within said Township on TUESDAY, NOVEMBER 3, 1964. FOR THE PURPOSE OF VOTING ON THE FOLLOWING RESOLUTION: RESOLUTION. WHEREAS, the Tax Allocation Board for the County of Washtenaw has presented a petition to the Washtenaw County Board of Supervisors to place before the voters of Washtenaw County the question of establishing separate tax limitation millage rates for an indefinite period, or until altered by the voters of the county, for the County of Washtenaw and the townships and school districts within the county, the aggregate which shall not exceed 18 mills, as follows: County of Washtenaw 5.50 Townships 1.16 Intermediate School Districts .12 School Districts 11.22 TOTAL 18.00 AND WHEREAS, said petition was presented in accordance with the statutes in such case made and provided. NOW THEREFORE BE IT RESOLVED that the question of adopting separate tax limitations shall be submitted to the registered and qualified electors of the County of Washtenaw at the next general election in the following form: Shall separate tax limitations be established for an indefinite period, or until altered by the voters of the County, for the County of Washtenaw and the townships and school districts within the county, the aggregate of which shall not exceed 18 mills as follows: County of Washtenaw 5.50 Townships 1.16 Intermediate School Districts .12 School Districts 11.22 TOTAL 18.00 Also Any Additional Amendments or Propositions That May Be Submitted. Notice Relative to Opening and Closing of the Polls. ELECTION LAW, ACT 116, P. A. 1954. SECTION 720. On the day of any election, the polls shall be opened at 7 o'clock in the forenoon, and shall be continuously open until 8 o'clock in the afternoon and no longer. Every qualified elector present and in line at the polls at the hour prescribed for the closing thereof shall be allowed to vote. THE POLLS of said election will be open at 7 o'clock a.m. and will remain open until 8 o'clock p.m. of said day of election. DUANE LUICK, Township Clerk

### Natural Correspondence

Items of Interest About People You Know

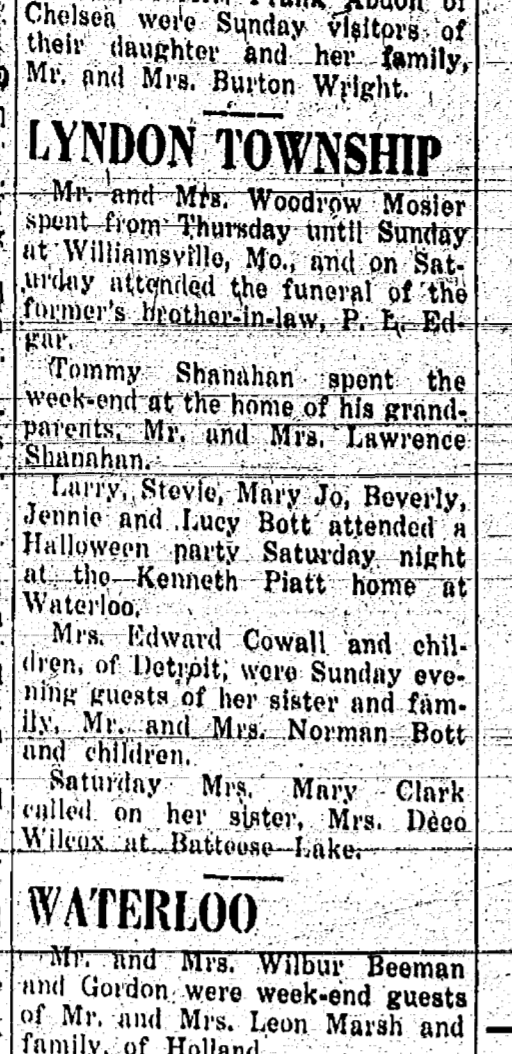
**TH FRANCISCO**  
William of Jackson was a evening caller of Mr. and Mrs. Notten accompanied by Mrs. Roy Miller called Mrs. Douglas Hoppe and Mrs. Wahl spent the week-end at the home of Mr. and Mrs. Henry Notten, Visited Mrs. Notten's parents, Mr. and Mrs. Notten Sunday afternoon, Philip Hosier and daughter, the week-end with Mrs. Notten in Plymouth.

**FOUR MILE LAKE**  
Mr. and Mrs. Ray Brassow and family attended Faith Lutheran church in Dexter Sunday. Their daughter, Esther, was confirmed during the service and was honored following the service at an open house.

**LYNDON TOWNSHIP**  
Mr. and Mrs. Woodrow Mosier spent from Thursday until Sunday at Williamsport, Mo., and on Saturday attended the funeral of the former's brother-in-law, F. E. Edger.

**WATERLOO**  
Mr. and Mrs. Wilbur Beeman and Gordon were week-end guests of Mr. and Mrs. Leon Marsh and family of Holland.

### HALF-PAST TEEN



and Mrs. Ezra Hehninger were Sunday afternoon visitors of Mr. and Mrs. Glenn Rentschler of Waterloo.  
Mr. and Mrs. Frank Abdon of Chelsea were Sunday visitors of their daughter and her family, Mr. and Mrs. Burton Wright.

### Laymen's Sunday Observed At Congregational Church

When the sermon time came last Sunday at the First Congregational church, UCC, three men replaced the Rev. Livingston because it was Laymen's Sunday. There were many good comments afterwards. Several people warned the Rev. Livingston that he "better watch out for his job because they were so good." Another told him he ought to feel "ten feet tall" because it took 14 men to replace him!

William Tito spoke first and related some of the excitement and activity he had experienced at the Association meeting the week before in Jackson and urged more active support of the denominational organization. He spoke of the Laymen's Role in Christian Social Concerns and asked for more study and investigation of the facts about several areas of social concern.

**Vehicle Licensing Continues Record Pace**  
Lansing — Strike or no strike, Michigan was making a strong bid to go over 2 million vehicle titles issued during 1964.  
The strike at General Motors had not stopped the influx of vehicle titles, according to Secretary of State James M. Hare, who predicted a new all-time record for the year and a good possibility of hitting the 2-million mark.  
As of Oct. 12, the Tilling Division reported 114,000 more titles processed than at the same time during 1963 — a grand total of more than 1,600,000. This compares with 1,485,000 in 1963 on the same date and a full year total of 1,886,615 in all of 1963.

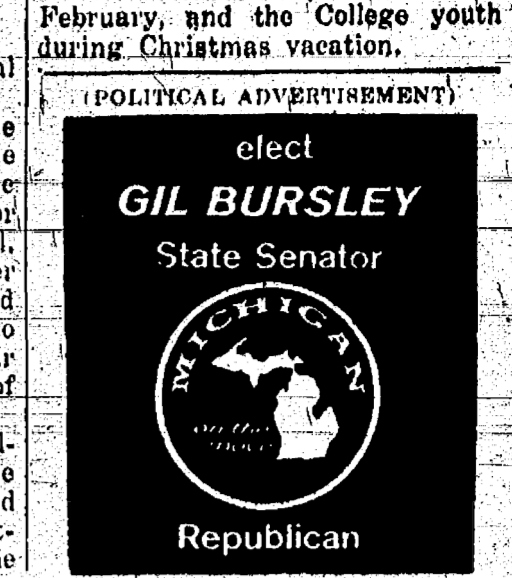
### WE HAVE SEVERAL GOOD USED TRUCKS

Including Tractors, Straight Trucks, Cab & Chassis and 4-Wheel Drive.  
Come in and check them over.  
**CHELSEA MOTORS, INC.**  
CLAIR GILBERT, Owner.  
3231 Manchester Rd. Phone 475-8625

**THE 88TH CONGRESS**  
The Eighty-eighth Congress has made a place for itself in history because of its action on civil rights, tax reduction, poverty, education and the limited nuclear test ban treaty. Most of the major bills passed were recommended by the late President Kennedy.

**PAUNCHES, INC.**  
Overweight endangers at least 10 percent of men in their 20's, 20 percent in the 30-40 age group, and one third in the 40-60 group. Insurance companies in the U.S. and Canada report.

### election GIL BURSLEY State Senator



## SPECIAL ELECTION

To the Qualified Electors:  
NOTICE IS HEREBY GIVEN,  
That a Special Election will be held in the  
**TOWNSHIP OF LYNDON**  
(Precinct No. 1)  
County of Washtenaw, State of Michigan  
at  
**LYNDON TOWNSHIP HALL**  
Corner North Territorial Road and Old M-92  
within said Township on  
**TUESDAY, NOVEMBER 3, 1964**

THE PURPOSE OF VOTING ON THE FOLLOWING RESOLUTION:

**RESOLUTION**

WHEREAS, the Tax Allocation Board for the County of Washtenaw has presented a petition to the Washtenaw County Board of Supervisors to place before the voters of Washtenaw County the question of establishing separate tax limitation millage rates for an indefinite period, or until altered by the voters of the county, for the County of Washtenaw and the townships and school districts within the county, the aggregate which shall exceed 18 mills, as follows:

County of Washtenaw	5.50
Townships	1.16
Intermediate School Districts	1.12
School Districts	11.22
TOTAL	18.00

AND WHEREAS, said petition was presented in accordance with the statutes in such case made and provided.

NOW THEREFORE BE IT RESOLVED that the question of adopting separate tax limitations shall be submitted to the registered and qualified electors of the County of Washtenaw at the next general election in the following form:

shall separate tax limitations be established for an indefinite period, or until altered by the voters of the County, for the County of Washtenaw and the townships and school districts within the county, the aggregate of which shall not exceed 18 mills as follows:

County of Washtenaw	5.50
Townships	1.16
Intermediate School Districts	1.12
School Districts	11.22
TOTAL	18.00

Also Any Additional Amendments or Propositions That May Be Submitted.

**Notice Relative to Opening and Closing of the Polls**  
ELECTION LAW, ACT 116, P. A. 1954  
SECTION 720. On the day of any election, the polls shall be opened at 7 o'clock in the forenoon, and shall be continuously open until 8 o'clock in the afternoon and no longer. Every qualified elector present and in line at the polls at the hour prescribed for closing thereof shall be allowed to vote.

THE POLLS of said election will be open at 7 o'clock a.m. and will remain open until 8 o'clock p.m. of said day of election.  
EMMA GOODWIN, Township Clerk

## GENERAL ELECTION

To the Qualified Electors:  
NOTICE IS HEREBY GIVEN,  
That a General Election will be held in the  
**TOWNSHIP OF LYNDON**  
(Precinct No. 1)  
State of Michigan  
AT  
**LYNDON TOWNSHIP HALL**  
Corner North Territorial Road and Old M-92  
within said Township on  
**TUESDAY, NOVEMBER 3, 1964**

For the Purpose of Electing the Following Officers, viz:

**NATIONAL** President and Vice-President of the United States  
**STATE** Governor and Lieutenant Governor, Secretary of State, Attorney General, Eight Members of the State Board of Education, Two Trustees of Michigan State University, Two Governors of Wayne State University.  
**CONGRESSIONAL** United States Senator, Representative in Congress  
**LEGISLATIVE** State Senator, State Representative  
**COUNTY** Prosecuting Attorney, Sheriff, County Clerk, County Treasurer, Register of Deeds, Drain Commissioner, Surveyor, and such other Officers as are elected at that time.

FOR THE PURPOSE OF ELECTING THE FOLLOWING OFFICERS, VIZ:

**NON-PARTISAN OFFICERS**  
Three Judges of the Court of Appeals, Judge of Probate, Circuit Judge (To Fill Vacancy).

FOR THE PURPOSE OF ELECTING THE FOLLOWING OFFICERS, VIZ:

**TOWNSHIP OFFICERS**  
Supervisor, Township Clerk, Township Treasurer, 1 Trustee, 1 Justice of the Peace, 4 Constables.

AND TO VOTE ON THE FOLLOWING PROPOSAL:

**A Referendum on Legislation.**

Also Any Additional Amendments or Propositions That May Be Submitted

**Notice Relative to Opening and Closing of the Polls**  
ELECTION LAW, ACT 116, P. A. 1954  
SECTION 720. On the day of any election the polls shall be opened at 7 o'clock in the forenoon, and shall be continuously open until 8 o'clock in the afternoon and no longer. Every qualified elector present and in line at the polls at the hour prescribed for the closing thereof shall be allowed to vote.

THE POLLS of said election will be open at 7 o'clock a.m. and will remain open until 8 o'clock p.m. of said day of election.  
EMMA GOODWIN, Township Clerk

## GENERAL ELECTION

To the Qualified Electors:  
NOTICE IS HEREBY GIVEN,  
That a General Election will be held in the  
**TOWNSHIP OF SYLVAN**  
(Precinct No. 1 and 2)  
State of Michigan  
AT  
**SYLVAN TOWNSHIP HALL**  
within said Township on  
**TUESDAY, NOVEMBER 3, 1964**

For the Purpose of Electing the Following Officers, viz:

**NATIONAL** President and Vice-President of the United States  
**STATE** Governor and Lieutenant Governor, Secretary of State, Attorney General, Eight Members of the State Board of Education, Two Trustees of Michigan State University, Two Governors of Wayne State University.  
**CONGRESSIONAL** United States Senator, Representative in Congress  
**LEGISLATIVE** State Senator, State Representative  
**COUNTY** Prosecuting Attorney, Sheriff, County Clerk, County Treasurer, Register of Deeds, Drain Commissioner, Surveyor, and such other Officers as are elected at that time.

FOR THE PURPOSE OF ELECTING THE FOLLOWING OFFICERS, VIZ:

**NON-PARTISAN OFFICERS**  
Three Judges of the Court of Appeals, Judge of Probate, Circuit Judge (To Fill Vacancy).

FOR THE PURPOSE OF ELECTING THE FOLLOWING OFFICERS, VIZ:

**TOWNSHIP OFFICERS**  
Supervisor, Township Clerk, Township Treasurer, 1 Trustee, 1 Justice of the Peace, 2 Constables.

AND TO VOTE ON THE FOLLOWING PROPOSAL:

**A Referendum on Legislation.**

Also Any Additional Amendments or Propositions That May Be Submitted

**Notice Relative to Opening and Closing of the Polls**  
ELECTION LAW, ACT 116, P. A. 1954  
SECTION 720. On the day of any election the polls shall be opened at 7 o'clock in the forenoon, and shall be continuously open until 8 o'clock in the afternoon and no longer. Every qualified elector present and in line at the polls at the hour prescribed for the closing thereof shall be allowed to vote.

THE POLLS of said election will be open at 7 o'clock a.m. and will remain open until 8 o'clock p.m. of said day of election.  
RICHARD J. KERN, Township Clerk

## SPECIAL ELECTION

To the Qualified Electors:  
NOTICE IS HEREBY GIVEN,  
That a Special Election will be held in the  
**TOWNSHIP OF SYLVAN**  
(Precinct No. 1 and 2)  
County of Washtenaw, State of Michigan  
at  
**SYLVAN TOWNSHIP HALL**  
within said Township on  
**TUESDAY, NOVEMBER 3, 1964**

FOR THE PURPOSE OF VOTING ON THE FOLLOWING RESOLUTION:

**RESOLUTION**

WHEREAS, the Tax Allocation Board for the County of Washtenaw has presented a petition to the Washtenaw County Board of Supervisors to place before the voters of Washtenaw County the question of establishing separate tax limitation millage rates for an indefinite period, or until altered by the voters of the county, for the County of Washtenaw and the townships and school districts within the county, the aggregate which shall not exceed 18 mills, as follows:

County of Washtenaw	5.50
Townships	1.16
Intermediate School Districts	1.12
School Districts	11.22
TOTAL	18.00

AND WHEREAS, said petition was presented in accordance with the statutes in such case made and provided.

NOW THEREFORE BE IT RESOLVED that the question of adopting separate tax limitations shall be submitted to the registered and qualified electors of the County of Washtenaw at the next general election in the following form:

shall separate tax limitations be established for an indefinite period, or until altered by the voters of the County, for the County of Washtenaw and the townships and school districts within the county, the aggregate of which shall not exceed 18 mills as follows:

County of Washtenaw	5.50
Townships	1.16
Intermediate School Districts	1.12
School Districts	11.22
TOTAL	18.00

Also Any Additional Amendments or Propositions That May Be Submitted

**Notice Relative to Opening and Closing of the Polls**  
ELECTION LAW, ACT 116, P. A. 1954  
SECTION 720. On the day of any election, the polls shall be opened at 7 o'clock in the forenoon, and shall be continuously open until 8 o'clock in the afternoon and no longer. Every qualified elector present and in line at the polls at the hour prescribed for the closing thereof shall be allowed to vote.

THE POLLS of said election will be open at 7 o'clock a.m. and will remain open until 8 o'clock p.m. of said day of election.  
RICHARD J. KERN, Township Clerk

Also Any Additional Amendments or Propositions That May Be Submitted

**Notice Relative to Opening and Closing of the Polls**  
ELECTION LAW, ACT 116, P. A. 1954  
SECTION 720. On the day of any election, the polls shall be opened at 7 o'clock in the forenoon, and shall be continuously open until 8 o'clock in the afternoon and no longer. Every qualified elector present and in line at the polls at the hour prescribed for the closing thereof shall be allowed to vote.

THE POLLS of said election will be open at 7 o'clock a.m. and will remain open until 8 o'clock p.m. of said day of election.  
RICHARD J. KERN, Township Clerk

### Pie Fillings Best Canned Commercially

Although thickened fruit pie fillings are canned commercially, it is not recommended that you do the job of canning at home.

It takes a much longer time for fruit to penetrate thickened mixtures, according to Mrs. Alice Epple, Extension Agent in Home Economics for Washtenaw County.

She says the high concentration of sugar and the presence of starch and acid from the fruit, hamper the process, it would be necessary to process such a thickened fruit mixture in a pressure cooker.

Ordinary flour and cornstarch

would not hold up throughout the long processing required. What's more, special waxy starches are used by the commercial companies in the preparation of canned pie fillings. These are not available on the retail market.

It is more satisfactory and more time-saving to buy the prepared filling, the agent says.

#### TWINS, 94, REUNITED

Burlington, Colo. — A. R. Crosby had not seen his twin sister, Mrs. Ada Marshall, of Arlington, Cal., in 40 years until they celebrated their 94th birthday at a family party at Mr. Crosby's home. They became separated when he moved to Colorado and had not seen each other since 1924. They had corresponded over the years.

Sell it with a Standard Want Ad.

### Community College Faculty Member Is Guest Speaker

Roy de Marrais, who is on the faculty of Schoolcraft Community College of Livonia and co-ordinator of the Washtenaw County Community College Committee, was the guest speaker at the meeting of the Women's Club of Chelsea Tuesday evening at McKim Memorial Library.

He was introduced by Mrs. A. D. Mayer (Florence) of Chelsea, who is a member of the Community College Committee.

The speaker pointed out that there is "an urgent need for a community college" in Washtenaw county saying that the community college program makes it possible for any young person or adult to get at least two years of education beyond high school.

He said the community college normally offers a two-year program in technology, industry or business leading to immediate employment; a two-year training in regular college work for those who plan to transfer to a four-year college; correction of scholastic weaknesses which often are a bar to gaining admittance to four-year colleges; and, finally, offers continuing education and retraining for adults.

de Marrais explained about the coming election on the Community College (in January) and answered questions asked by members of the club pertaining to the community college proposal.

Hostesses for Tuesday's meeting were Mrs. Wilbur Hinderer and Mrs. LeRoy Hoffman.

Announcement was made that at the next club meeting, Nov. 10, Mrs. Ben Donaldson will tell of her recent travels in Korea and Japan.

Each member was asked to bring one or two guests to the Nov. 10 meeting.

### Club and Social Activities

**ROGERS CORNERS EXTENSION**  
Rogers Corners Extension Study Group held a regular meeting Tuesday evening, Oct. 20, at the home of Mrs. Walter Loeffler. The 13 members present responded to roll call on the topic "How I Met My Husband."

Christmas gifts are being made for the open house to be held Nov. 9 and 10 at the Rival Activities Building on Saline-Ann Arbor Rd.

The lesson for the meeting, pertaining to laundering clothes, was presented by Mrs. Loren Koogler.

Co-hostesses who served refreshments at the October meeting was Mrs. Erwin Wenk.

The November meeting will be held at the home of Mrs. Elliott Lounsbury with Mrs. Alfred Schneider as co-hostesses. The meeting date is Nov. 17.

**WING-BEAT SPEEDS**  
The wing-beat of a hummingbird varies from 55 times per second when feeding to 200 per second during courtship.

**MARION SIMONS CIRCLE**  
Marion Simons Circle of the WSGS of the Methodist church held a meeting Wednesday, Oct. 21, at the home of Mrs. Lyman Adams at Cavanaugh Lake.

The group welcomed two new members, Mrs. Fred Harris and Mrs. Floyd Gillett.

A guest of Mrs. Adams at the meeting was Mrs. Katherine Malta.

The devotional service, in charge of Mrs. Letha Beach, and the program, presented by Mrs. Elynn Beach, were on the topic, "Christ and the Life Within."

The November meeting will be held Wednesday, Nov. 18, at the home of Mrs. Albert Peterson, 410 Dale St.

**MARION SHAW CIRCLE**  
Mrs. Carl Schlosser and Mrs. Carl Stevens were hostesses for the Marion Shaw Circle of the Methodist church which met Wednesday, Oct. 21, at the church.

A Halloween theme was used for the table decorations.

Mrs. Ada Wiebe, who presented

the program and devotional service, asked five members of the group to participate. They are Mrs. Schlosser, Mrs. Stevens, Mrs. Guy Barton, Mrs. E. J. Wells and Mrs. Nora Friggens.

Each read a quotation and gave an interpretation of its relation to her own life as brought out in the program topic, "Prayer and the Life Within."

The next circle meeting will be held at the church Nov. 18.

**VIVIAN OTTO CIRCLE**  
Mrs. Warren Daniels and Mrs. Loren Turner were hostesses for a meeting of Vivian Otto Circle of the Methodist church, held Wednesday morning, Oct. 21, at the Cavanaugh Lake home of Mrs. Daniels.

Mrs. Benjamin Bower opened the program period with several readings pertaining to Mary, the mother of Jesus and about motherhood in Bible times.

Continuing the theme, Mrs. Leigh Palmer read scriptural tributes to mothers from the 31st chapter of Proverbs and from the 11th Psalm. Her program topic was "The Young American Mother—Who Is She?"

Continuing, Mrs. Palmer compared the young people of today with those of their grandmothers' youth. She concluded with a poem entitled "Spiritual Beauty Hints" after listing several questions such as "Do young people lead an artificial life?" "Isn't this age a challenge to young people?" "Is the Young American woman making a success of the complex of modern life?" and "Is there enough time for religious thinking?"

During the business session which followed, several announcements of coming activities were made and it was stated that the November meeting will be held at the home of Mrs. Chandler Rogers with Mrs. Benjamin Bower as assisting hostesses.

**SHRINKING SILHOUETTES**  
Shrinking Silhouettes Chapter of TOPS will hold a regular weekly meeting Wednesday, Nov. 4, at the social center of the Dexter Methodist church with Mrs. A. T. Gardone as the hostess. The meeting will be open to prospective new members and baby sitting service will be available as it is at all meetings held at the Dexter location.

The Oct. 21 meeting, held at the church's social center, was attended by 11 members and Mrs. Elmer Schneider was the hostess.

Named "queen" at the meeting

For losing the most weight during the week, Mrs. A. S. Gardner was crowned "queen" at the Oct. 21 meeting. She weighed 115 pounds at the beginning and the hostesses was Mrs. Carl Armbruster of Ann Arbor.

**Home Economics Study Groups Calendar**


Nov. 2 — S.I.F. Neighbors Study Group, home of Mrs. Max Stuebe, 3391 S. Parker, Ann Arbor.

Nov. 2 — Ellsworth Rd. Study Group, home of Mrs. Max Stuebe, 2813 Ellsworth, Ann Arbor.

Nov. — Homemakers Study Group, home of Mrs. Mary White, 0240 State Rd., Saline.

Nov. 3 — Kingswood Study Group, home of Mrs. R. Goins, 649 E. Ypsilanti.

Nov. 3 — North Superior Study Group, home of Mrs. E. Maizel, 4125 Cottrell, Farmington; Mrs. E. Minock, Chelsea.



(Political Advertisement)

## RE-ELECT

Patricia Newkirk

## HARDY

REPUBLICAN

18 Years Experience

### REGISTER of DEEDS

VOTE NOVEMBER 3

### BOWLING

Chelsea Lanes Mixed League

W	L
IGA Dexter	22 6
Hankerd's Firebirds	20 8
Sam's Barber Shop	17 11
Jiffy Mixers	17 11
4 R's	16 12
Wolverine Tavern	15 13
Chelsea Lanes	15 13
4 Reeds	14 14
Kiel-Bury	10 18
Detting's Grocery	8 20
Wander Bar	8 20
Feldkamp-Hanson	6 22

Men's 475 series: G. Burnett, 590; D. Rogers, 544; J. Goitra, 529; G. Hansen, 510; M. Poertner, 511; R. Reed, 507; M. Detting, 509; M. Packard, 493; H. Reed, 492; R. Kile, 486; C. Clark, 480; D. Welshans, 478; R. Doody, 475.

Men's 175 games: G. Burnett, 223-194-182; M. Detting, 214; R. Reed, 211; D. Rogers, 202-192; J. Goitra, 189-188; G. Hansen, 187; M. Poertner, 180.


Women's 425 series: P. Poertner, 484; L. Doody, 464.

Women's 150 games: V. Detting, 176; L. Welshans, 175; P. Poertner, 163-161-160; L. Doody, 163-157; E. Reynolds, 152; F. Perry, 150; R. Harook, 150.

(Political Advertisement)

## RE-ELECT

STATE REPRESENTATIVE



## TOM SHARPE

REPUBLICAN

51st DISTRICT

Livingston, Washtenaw, Lenawee Counties

THOMAS G. SHARPE

*The Candidate with Legislative Experience*

(Political Advertisement)

# VOTE DEMOCRATIC

## Thursday, Nov. 3



LYNDON B. JOHNSON  
For President



NEIL STAEBLER  
For Governor



WESTON E. VIVIAN  
For U. S. Congress  
Second District



PHILIP A. HART  
For U. S. Senator



HUBERT H. HUMPHREY  
For Vice President

(Political Advertisement)

# GOVERNOR GEORGE ROMNEY

(Michigan's hardest-working governor)

LIEUTENANT-GOVERNOR BILL MILLIKEN

(Majority floor leader, Mich. Senate)

SECRETARY OF STATE ALLISON GREEN

(Michigan's "Mr. Speaker")

ATTORNEY-GENERAL MIKE WARSHAWSKY

(Law—without fear or favor)

**VOTE TO KEEP MICHIGAN MOVING AHEAD WITH THE ROMNEY-REPUBLICAN TEAM - NOV. 3**

WATCH "CAMPAIGN COUNTDOWN" ON TV, ELECTION EVE, NOV. 2

## BE CONCERNED ABOUT YOUR FUTURE

### Vote for the Following Team to Support Your National Officials:

William E. Dannemiller	For State Senator	Robert Derengoski	For Lt. Governor
Brian Lavan	For State Representative	James M. Hare	For Secretary of State
Charles F. Gray	For State Representative	Frank Kelly	For Attorney General
Albert J. Coudron	For State Representative	For State Board of Education:	
	53rd District	Edwin Novak	Marilyn G. Kelly
Vanzetti M. Hamilton	For Prosecuting Attorney	Rev. Charles Morton	Carmen Delli Quadray
Douglas J. Harvey	For Sheriff	Thomas J. Brennan	Donald Thurber
John B. McGill	For County Clerk	Peter Oppenwall	Dr. Leon Fill
Arthur H. Simsar	For County Treasurer	For Wayne State Board of Governors:	
Mrs. Juanita Mansfield	For Register of Deeds	Benjamin Rose	William Hall
Richard E. Nash	For Drain Commissioner	For Michigan State Board of Trustees:	
Edward L. Jonas	For County Surveyor	Clair White	Frank Hartman

### NON-PARTISAN BALLOT

Pull down the lever over the names of FRANCIS L. O'BRIEN and THOMAS GILES KAVANAGH For Judge, Court of Appeals, 2nd District.

### VOTE "NO"

On State (Official) Referendum "Massachusetts" Ballot

We don't want to vote the "Confusion" Ballot next election.

## FOR RIDES TO THE POLLS NOVEMBER 3

### Call Democratic Headquarters — 475-7229

(This advertisement sponsored by Washtenaw County Council and Ypsilanti City Democratic Committee.)

# Club and Social Activities

### MOTHERS

Mothers Child Study Club visited the Figurama in Ann Arbor Tuesday evening. Victor Kohsman of Chelsea is one of the owners and explained and demonstrated the equipment and helped in the control of the promotion of health. Members returned to Chelsea, the members stopped at for refreshments.

### GRACE OTTO CIRCLE

The October meeting of the Grace Otto Circle of the First Methodist church met Tuesday, Oct. 20, at the home of Mrs. Thomas Smith.

The program "Where Can the Young Mother Get Help?" was presented by Mrs. James Gunn, Devotions were led by Mrs. James Hoffmeyer.

### SUBURBAN MOTHERS

Suburban Mothers Child Study club met Thursday evening at the home of Mrs. Ross Baylis, with Mrs. Robert Eisele and Mrs. Dale Eisele assisting as co-hostesses.

Following the business session games and refreshments in the Halloween theme were enjoyed.

The next regular meeting is scheduled to be held Nov. 12 at the home of Mrs. Robert Adams.

### CHILD STUDY CLUB

Tuesday evening, Child Study club members and their husbands held a dinner meeting at Inverness Country club and heard a talk by Gerald Phelan of the Michigan Bankers Association.

Phelan's talk, in optimistic vein, was on the topic, "What the Bankers See on the Economic Horizon."

Chairman and co-chairman of the dinner meeting were Mrs. Clare Warren and Mrs. Eldon Gorton, respectively. They were assisted by Mrs. Marion Dietle, Mrs. Donald Baldwin and Mrs. James Craig.

There were 44 members and guests present.

The next meeting, Tuesday, Nov. 10, will be held at the home of Mrs. Robert Meyers and the guest speaker is to be L. W. de Marais of Livonia's Schoolcraft Community College and co-ordinator of the Washtenaw County Community College Committee.

### KINDER CLUB

Kinder Klub Child Study club with 14 members and five guests present, met Tuesday evening at the home of Mrs. Blaine Lytle. Her co-hostesses were Mrs. Gary Minick and Mrs. Charles Stapish.

Guest speaker on the topic, "Are You Raising A School Drop-Out?" were Chelsea School Superintendent Charles Camoron and Elementary Principal Sylvester Wojcicki.

They pointed out that there are early indications to watch for in guarding against high school dropouts. They listed some of these "signs" and characteristics as follows: reading retardation, poor study habits, frequent absences, failures, emotional immaturity, transient families, etc.

Suggestions mentioned for solution of the problem included: signing drop-outs early, providing a constructive program of pre-kindergarten nursery, vocational education and a general enrichment of community environment.

### PEARL BAXTER CIRCLE

Members of Pearl Baxter Circle met Wednesday, Oct. 21, at the home of Mrs. Calvin Summers whose co-hostesses included Mrs. Harry Prudden and Mrs. Mary Clark.

A program and devotional service on the topic, "Prayer and the Life Within," were presented by Mrs. Walter Harper and Mrs. John Potts.

Mrs. James Craig will be the hostess for the Nov. 18 meeting at her home, it was announced.

Wednesday's meeting was concluded with prayer by Mrs. Howard Walz, the circle chairman.

### JAYCEES ENTERTAIN BOYS AT ST. LOUIS SCHOOL

Members of the Chelsea Jaycees—Auxiliary entertained the boys at St. Louis school at a Halloween party at the school on Saturday.

They provided appropriate games as entertainment and served refreshments.

### PEOPLE'S CHURCH

The Oct. 22 meeting of Episcopal Church Women of St. Barnabas church, a decision was reached for the date of the annual Christmas bake sale and bazaar. The affair will take place Saturday, Dec. 5 and will be held at Sylvan Town Hall. Hours selected are 9 a.m. until 5 p.m.

A Dec. 4 deadline was set for contributing items for the bazaar. The items may be left at the home of Mrs. Francis Wojcicki, 210 Pierce St., or at the home of Mrs. E. W. Eaton, 100 E. Middle St.

Mrs. Fred Meyers, the women's group president, made several announcements of special interest. These included mention of Bishop's Day Nov. 2, from 9:30 a.m. until 1 p.m. at St. Paul's Cathedral, Detroit, with the Rev. Canon Byron Green as speaker; a supper for the congregation Nov. 19 to be put on by the young people of the church for which reservations may be made by calling the Rev. J. R. Smucker; and special meetings at which the Rev. Canon Green, an evangelist of the Episcopal Church, will be speaking.

Meetings will be held at Ypsilanti High school on Nov. 9 until 11 a.m. and at St. Andrew's church, Ann Arbor, Nov. 10-18, from 10 until 11 a.m. each day. The Rev. Canon Green's topic at St. Andrew's will be "The Christian Home in the 60's."

It was pointed out that anyone needing transportation to the Ypsilanti or Ann Arbor meetings contact the Rev. Smucker or Mrs. Meyers.

In other business at Thursday's meeting, Mrs. Meyers called attention to the need for volunteers

### EPISCOPAL CHURCH WOMEN PLAN FALL ACTIVITIES

The list continues with Mrs. M. J. Baxter, chaplain; Mrs. Robert Rudd, marshal; Mrs. Lawrence Wacker, organist; Mrs. K. R. McManis, Adah; Mrs. Doris C. Dell, Ruth; Mrs. Ruth Chriswell, Esther; Mrs. William Adams, Martha; Mrs. Harold Balf, Electa; Charles Pendley, warden; Henry Leggett, sentinel.

The list is concluded with Mrs. Thomas Smith, Christian flag bearer; Mrs. Clarence Pendley, OES flag bearer; Mrs. Carl Stevens, Bible bearer; Mrs. Ellis Boyce, leader; Mrs. Duane Hall, soloist; and the following color boys: Mrs. Henry Leggett, blue; Mrs. Charles Lane, yellow; Mrs. Thomas Johnson, white; Mrs. LaRue Shaver, green; and Mrs. Effie Morgan, red.

County officers who were present for the installation ceremony included Mrs. Ha-Kantz of Milan, Association president; and Mrs. Ruth Chriswell, Association marshal.

During the installation of Mrs. Collyer as worthy matron, Mrs. Duane Hall sang "Star of the East," "The Way of the Cross Leads Home," and "The Lord's Prayer."

For the installation, the chapter room was beautifully decorated with chrysanthemums and with a styrofoam arch which held an arrangement of pink roses and white lilies of the valley, the flowers and colors being those selected by the new worthy matron for her year in office.

The outgoing matron, Mrs. Robert Rudd, welcomed the guests present for the public installation service.

Mrs. Rudd and her husband who was worthy patron the past year, were presented with a past matron's jewel and past patron's pin, respectively, at the close of the service.

Refreshments were served in the dining room, Mrs. Rudd and Mrs. Ruth Chriswell, a past matron, pouring at the refreshment table.

## Mrs. C. Collyer Is Installed To Head OES

Mrs. Clinton Collyer (Mildred) is the 1964-65 worthy matron of Olive Chapter, No. 108, Order of Eastern Star, and was installed at special ceremonies held at the Madonna Hall Saturday evening, Oct. 17.

Installing officer was Mrs. Franklin Gee while Mrs. H. M. Leggett was installing marshal; Mrs. Martin Steinbach, installing chaplain; Mrs. Thomas Smith, installing organist and Mrs. Duane Hall, installing soloist.

In addition to Mrs. Collyer, the 1964-65 officers are Clinton Collyer, worthy patron; Mrs. Wesley Ellenwood, associate matron; Harold Balf, associate patron; Mrs. Norman Schmidt, secretary; Mrs. J. Wilbert Smith, treasurer; Shirley Smith, conductress; Mrs. Thomas Harris, associate conductress.

## Episcopal Church Women Plan Fall Activities

The list continues with Mrs. M. J. Baxter, chaplain; Mrs. Robert Rudd, marshal; Mrs. Lawrence Wacker, organist; Mrs. K. R. McManis, Adah; Mrs. Doris C. Dell, Ruth; Mrs. Ruth Chriswell, Esther; Mrs. William Adams, Martha; Mrs. Harold Balf, Electa; Charles Pendley, warden; Henry Leggett, sentinel.

## Church Women Plan World Community Day

United Church Women of Chelsea plan the annual observance of World Community Day on Friday, Nov. 6. The meeting is to be held at the Methodist church and will begin with a luncheon at 12:30 p.m. in the Methodist church social center. Following the luncheon the afternoon session will convene in the church narthex.

The afternoon meeting will consist of three parts: a worship service in which ladies from member churches of United Church Women will participate; a dedication of school bags and school supplies for Brazilian children; and a dramatic presentation, called "Nations in Community."

The school bags for Brazilian children have been made by the local church groups and will be filled with four pencils, a notebook, pad of paper, eraser, scissors, ruler, crayons or colored pencils, tube of paste, and modeling clay. Some groups will bring yard goods.

Reservations for the luncheon should be made with Mrs. Edwina Gault or Mrs. Albert L. Peterson.

## On Dean's List at Kalamazoo College

Kalamazoo — Carol S. Cameron of Chelsea has been named to the dean's list at Kalamazoo College. A senior, she was cited for having maintained a 4.0 (straight A) academic average throughout the summer quarter. Her parents are Mr. and Mrs. Charles Cameron, 615 N. Freer Rd.

Miss Cameron is taking part in education which includes an experiential career-service quarter for sophomores, six months of foreign study for juniors, and an independent study quarter for all seniors. Students are on campus for a total of ten 11-week quarters before they graduate. Vacation terms for both students and faculty are scheduled throughout the year.

## Engagement Told

Announcement is being made of the engagement of Margo Ann Leggett to Pvt. Robert Coleman Reed, Jr., U. S. Marine Corps, Camp Pendleton, Calif. Both are graduates of Chelsea High school. They plan to be married in early November. The prospective bride is the daughter of Mr. and Mrs. Donald Leggett. Her fiancé is the son of Mr. and Mrs. Robert Coleman Reed, Sr.

In a Labor Day speech, Senator Goldwater said that if he were elected President he would propose to Congress a program to cut income taxes on a regular yearly basis. He said, however, that first it would be necessary to operate on a series of balanced budgets.

## ELECT PATTY SEITZ BUST FOR VAN TOWNSHIP TREASURER

Members of the Chelsea Jaycees—Auxiliary entertained the boys at St. Louis school at a Halloween party at the school on Saturday.

They provided appropriate games as entertainment and served refreshments.



## PEOPLE'S CHURCH

The Oct. 22 meeting of Episcopal Church Women of St. Barnabas church, a decision was reached for the date of the annual Christmas bake sale and bazaar. The affair will take place Saturday, Dec. 5 and will be held at Sylvan Town Hall. Hours selected are 9 a.m. until 5 p.m.

## VILLAGE BEAUTY SALON

119 1/2 South Main Street Phone 475-5421

### FALL SPECIAL

Shampoo, Set, Style Including Haircut Only \$3.00

JEAN SWEET and CAROLE DANCER

## Tips for Your Top from

Want to look like a scarecrow? For Halloween, you're in style. Have fun. But following Halloween, we get into the mood for the holidays — Thanksgiving, Christmas — seems impossible, but it's true. This is the season when every woman wants to look her extra-special best. Families gather after a year's absence and if there's anything that makes a woman feel prouder than hearing the words, "Why, you're prettier than ever," we don't know what it is. And if there's anything we'd rather do than be the reason for you women feeling proud because you're "prettier than ever," we don't know what that is either. That's what we're trained for — and we hope you'll keep us in mind when you prepare for the holiday season ahead.

Magic Mirror Beauty Salon  
6585 Jackson Rd., Ann Arbor  
Phone: 665-0816

## WINANS Jewelry Store

Don't wait any longer! It's so inexpensive to enhance their true beauty and brilliance with a new setting.

See our fine selection of newest mountings in 14K white or yellow gold.

Ring enlarged to show detail.

WINANS Jewelry Store



### Gloria Swanson Fashions

"FALL FROLICS" STARRING GLORIA SWANSON FOR PURITAN FOREVER YOUNG

Style No. 873 — Style No. 1873

wonderful opening for the second Act... Crepe all its glory. Acetate jumper and a Rayon blouse forces for spectacular entrances. Born to be comfortable, wear with or without the string belt. Away from the neck look brings the house down for sheer wearability, everywhere. Ruby.

14.95

### Friendly Colors Help Make A Friendly Home

Plan now to get your home in top condition for the coming holiday season which will soon be upon us.

CUSTOM-BLENDED COLORS AVAILABLE

FOR PAINTING NEEDS

Bring in a piece of drapery or other material. We can match any color you want with our custom-blending machine.



### Finkbeiner Lumber Co.

Phone Chelsea GR 9-3881

On Old US-12 Just off S. Main St.

## Sprague & Carleton

EARLY AMERICAN

Pleasant dreams and pleasant awakenings belong to this charming Sprague & Carleton bedroom, dear to any age. This newly-styled ensemble has the warm aura that is associated only with Early American carried out in solid rock maple. Protected by the exclusive Mapleux finish that resists stains and scratches. Turned spindles, shaped head and footboard, chests with attractive front moldings and ogee feet epitomize the design of true Early American. Adding to its appeal is its astonishing price tag! See it soon!

DOUBLE DRESSER WITH FRAMED MIRROR	\$189.95
TRIPLE DRESSER WITH FRAMED MIRROR	\$229.95
CHEST ON CHEST	\$139.95
4 DRAWER CHEST	\$119.95
SPINDLE BED	\$79.95
NIGHT STAND	\$49.95

## MERKEL BROTHERS

BEAUTIFUL HOME FURNISHINGS

## Patty Ann Shoppe

118 South Main St.

### New Reading Programs Introduced in Grade Schools

New reading materials specifically designed to individualize reading instruction have been introduced in many of the Chelsea Elementary reading classes. The new program, developed by Scientific Research Associates (SRA), recognizes that a teacher must deal with a wide range of individual abilities found in any group of children learning to read. Therefore the program is conceived to fulfill the needs of the individual student as well as the needs of the group.

Mrs. Isabelle Eisole, reading improvement teacher in the elementary schools, explained the basic value of the new materials as follows: "Each student begins the program on solid ground because he starts at a level where reading material is not too difficult, not too easy . . . but where it matches his own existing ability. As he improves his reading skills, he moves steadily ahead to more challenging learning experiences."

Mrs. Eisole also explained that teachers using the SRA Reading Laboratory are able to make a continuous and realistic diagnosis of each student's progress and problems in reading.

In addition to the SRA Reading Laboratory materials, new supplemental reading materials called Pilot Libraries are being used to enrich the elementary reading program. Ivan Kemp, school librarian, has announced that these libraries are being used experimentally in the fifth and some sixth grade classes this year.

In explaining the adoption of the new materials, Kemp said that "the Pilot Library provides a whole world of fascinating reading guaranteed to excite the interest of every student — slow, average, and fast reader alike. The selections in the Pilot Library are unaltered excerpts from books by well-known authors of children's literature and they offer an en-

richment program to bridge the gap between the brief materials of a basal reading program and full-length books." "Each book," said Kemp, "is chosen for its literary value, reading level, and its appeal to children."

Sylvester Wojcicki, elementary school principal, has stated that these innovations in methods and materials for the teaching of reading will doubtless be used more widely in other elementary classes in the future. Similar reading improvement materials are also being used now in the junior and senior high English classes.

### Junior High HONOR ROLL

First Marking Period, 1964

7th Grade — Jacque Bailey, Treva Bentley, Floyd Boyce, Robert Brassow, Carolyn Buckingham, David Rust, Angela Cavadas, Vickie Clemons, Stephen Ejsman, Patty Gilbert, Kathryn Grob, Donald Harat, John Hepburn, Jeanne Hinderer, Rhonda Kern, Gail Malsotre, Dennis Morgan, Jane Oesterle, Bruce Parks, John Perry, Bobby Peterson, Douglas Schenker, Brenda Seitz, Rosalynn Shears, Greg Stephens, John Sutter, Connie Taylor, Tom Tibb, Ann Travis (All-A), Virginia White, Yekie Wilkerson, David Winter, Beverly Gebot.

8th Grade — Shelley Balze, Barbara J. Bauer, Curtis Belser, Cynthia Benjamin, Terri Boyer, Steve Dietrich, Nancy Dyson, Sharon Ellenwood, Mike Grau, Marilyn Hinderer, Richard Marshall, John Potts, Linda Sawyer, Tim Schmaek, Chuck Slane, Ryan Smith, Thomas Thomson.

The truth is a great enemy to conversation.

### make your own TV TEST

1. He's host on weekly "Exploring" program. **Dr. Watson, Dr. Albert Hibbs, Ted Mack.**
2. Host since on daily "You Don't Say" program. **Hugh Downs, Jack Linkletter, Tom Kennedy.**
3. Film star made TV drama debut in "Murder in the First." **Janet Leigh, Susan Hayward, Peggy Lee.**
4. He was marriage broken in "Have Girls — Will Travel." **Cary Grant, David Niven, Bob Hope.**
5. Genial saddle-tramp in Bonanza. "Thanks for Everything, Friend." **Aldo Ray, Rory Calhoun, Bob Hope.**

ANSWERS: Hibbs, Kennedy, Leigh, Hope, Calhoun, Ray, Seitz, Shears, Stephens, Sutter, Taylor, Tibb, Travis, White, Wilkerson, Winter, Gebot.

### '65 License Plate Sale Starts Nov. 2

A new color, new slogan, lower numbers, lighter but tougher and more weather-resistant materials will be featured on the 1965 automobile license plates that go on sale Nov. 2, at the Chelsea branch office.

For the first time, Secretary of State James M. Hare said, plate numbers will start with "0001" instead of "1001." The new numbering system will provide more than 500,000 additional numbers.

"One new provision will make it easier for motorists to get their plates this year," Hare said. "Owners may bring either their titles or their prior year's registration, whichever is the more convenient."

The colors, this year, are yellow on dark blue to honor the University of Michigan. Also, instead of the traditional "Water Wonderland" this year's slogan will be "Water-Winter Wonderland." Hare says there is a question whether the 1965 plates will be for one-year or three-year period, as originally planned. He says the plates will be issued on an annual basis from now on — if he gets his way. He says that he has been assured by the Department of Administration and Prison Industries, the 1965 plates will last at least three years. The new plates are galvanized and of a lighter gauge steel, Hare says.

The actual cost of manufacturing of the plates is 22 cents a pair. Added to the cost of manufacturing is the printing, postage or shipping charges, and sales in the branch offices brings the total cost up to \$1.00 per set of plates. Michigan car owners are paying .85 cents a hundredweight, a rate that has remained unchanged since 1935. In Oklahoma a motorist may pay over \$20 for his plates. Vermont charges a flat \$92 for plates. Other states use different formulas — some even involve property taxes.

**A-BOMB AND CHINA**  
United States sources believe that Red China has the capability of setting off an atomic explosion, but it will be years before they become a major nuclear power. Secretary of State Dean Rusk said that the United States has anticipated the possibility of Peking's entry into the nuclear weapons field and the department will make it known when and if Red China explodes an A-bomb.

Young things sometimes take football too seriously, but they enjoy it.

### ON CAPITOL HILL

By Congressman George Meader

Restoring the balance of power between the three branches of government through curbing the invasion of the Federal Courts into the legislative field is the most serious problem facing the country today. It will not be solved by a weak, "rubber-stamp" 89th Congress.

The recent departure from tradition of the Supreme Court on March 28, 1962, in the Baker vs. Carr decision, has posed the most serious threat to the continuation of our unique governmental system of separation of powers to occur in our life-time, and requires prompt and forthright action by the people and their elected representatives if that system is to be preserved. This basic constitutional issue is almost completely ignored in the press and in the political debates in this campaign.

The assertion by the federal judiciary of the power to determine the composition of legislative bodies amounts to judicial supremacy over legislative bodies and threatens the equilibrium between the three departments of our government. The judiciary arrogantly has claimed superiority over the only branch of the government directly and closely responsible to the people, and has undertaken to direct legislative bodies how they should exercise their legislative discretion.

In the states of Connecticut, Vermont and Idaho, lower Federal courts have ordered legislatures which will convene in 1965, not to pass any laws except reapportionment laws. How can these legislatures, if the Court's orders are valid, raise money and appropriate funds to provide for the multitude of services states perform in the field of education, hospitals, highways, and law enforcement?

In testimony before the House Judiciary Committee, Governor Love of Colorado stated that the legislature of Colorado had been made a party defendant in the Federal Court case there. "What right does the Court have to call before it a co-ordinate branch of the government and issue orders to the elective agency of the sovereign people and tell the legislature what laws it should pass? The people of the United States must insist that the courts stay within their proper sphere of applying the law, not making it, if a system of limited government which has provided maximum well-being and maximum freedom for the individual citizen is to be preserved."


# VOTE REPUBLICAN

## SYLVAN TOWNSHIP — NOV. 3

The following Republican candidates for Sylvan Township officers promise fair and honest administration of township business and will appreciate your support at the General Election next Tuesday.

- |                       |                      |
|-----------------------|----------------------|
| FREDERICK BELSER      | Supervisor           |
| BETTY SEITZ BUST      | Treasurer            |
| RAY KNICKERBOCKER     | Clerk                |
| JOSEPH T. MERKEL, SR. | Trustee              |
| J. RAYMOND STEINBACH  | Justice of the Peace |
| HOWARD WALZ           | Constable            |
| NORMAN HINDERER       | Constable            |

### VOTE REPUBLICAN ALL THE WAY!



### VOTE VIVIAN

U.S. CONGRESS DEMOCRAT

Wes Vivian, Democratic Candidate for Congress, an electronics engineer and a vice-president of the Conduction Corporation, is deeply concerned with the major issues of economic growth, human rights, education, maintaining peace, natural resources, farm problems, and assistance to older citizens. He is determined to bring positive action to bear on these and other issues as they arise.




### "Michigan Outdoors" with MORT NEFF

Auto-Owners HUNTERS INSURANCE

— See —

### A. D. MAYER AGENCY

Phone 479-5061 Chelsea, Mich.



### Too Many Bills on Hand?

Consolidate ALL Your Debts into ONE Monthly Payment with a

### "CLEAN SWEEP" LOAN

UP TO \$1000.00

ONE LUMP SUM FROM US — NOW — DOES IT!

### MID-STATE FINANCE

PHONE 475-8631 Chelsea, Mich.

121 1/2 S. Main Street

## SAVE \$40 ON THE SET!

ONCE IN 51 YEARS! SERTA CUTS THE PRICE ON a reg. \$69.95 MATTRESS

### NOW FOR A LIMITED TIME

\$49.95 Matching Box Spring \$49.95

Choice of Regular or Extra-Length at this special price.



REGULAR PRICED AT \$69.95 — NOW —

# \$49.95

- ★ 624 Matched Coil Set
- ★ Luxury Quilted Surface
- ★ Regular or extra long, same low price
- ★ Sturdy blue-damask cover
- ★ Extra firmness without hardness
- ★ 8 Breathing Ventilators
- ★ 4 Handles for easy turning
- ★ Heavy gauge, sag-resistant border
- ★ White cotton plus Sisal insulation
- ★ Backed by Serta, the name known for quality over 51 years

## MEABON'S

### TV, Furniture & Appliance

Phone Chelsea GR 5-5191 1170 M-52 South



### Court of Appeals Candidates Speak at Ann Arbor Meeting

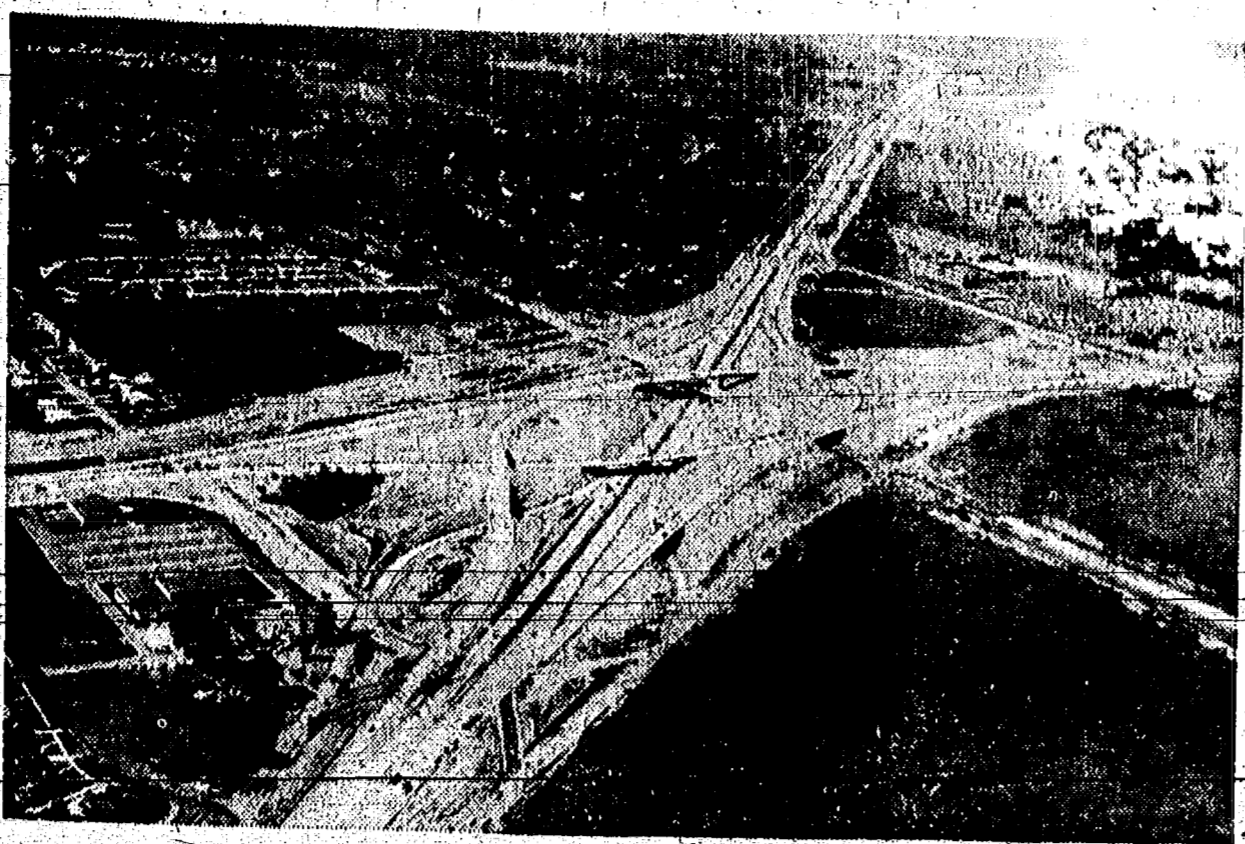
Non-partisan candidates for the newly-formed Court of Appeals attended a Candidates Fair in Ann Arbor last week, spoke, and answered questions. Three of the six will be chosen next Tuesday to serve from the counties surrounding Detroit for terms varying from six to 10 years depending on the number of votes received.

Ann Arbor Municipal Judge Francis L. O'Brien emphasized that "the state Constitution, as I take it, creates a single court, with divisions of equal dignity. All matters before the court are matters of concern for the entire judiciary. Nothing his experience as a former teacher and present member of the State Alcoholism Board, he added, "There are judicial conferences, and all who have dealt with these matters should exert their influence."

### Series of Classes Starts Tonight for Expectant Parents

A new series of classes for expectant parents, sponsored by the Visiting Nurses Association and the Washtenaw County Health Department, will begin at 7:30 p.m. tonight in Basement Room 1 of the County Building. A 7 p.m. registration period will precede the class.

The opening discussion will include a talk on pre-natal growth and the showing of a film, "Human Reproduction." Following an explanation of the anatomy and physiology of pregnancy, there will be a question-and-answer period.



**FREWAY MILEAGE QUADRUPLED IN FIVE YEARS:** Michigan's freeway mileage has quadrupled during the last five years — from 300 miles in 1959 to more than 1,200 miles today. The 1,200th mile of superhighway opened to traffic in Michigan includes this huge interchange where Nine-Mile Rd. intersects the Lodge and Southfield Freeway north of Detroit. State Highway Commissioner John C. Mackie will open the 1,200th mile at dedication ceremonies Oct. 29.

**Senator Philip A. Hart's REPORT from WASHINGTON**



### Poultry School Starts Nov. 3 At Milan High

A Poultry school for interested poultry raisers in Lenawee, Monroe, Washtenaw and Wayne counties will be held each Tuesday in November beginning Nov. 3. The meetings will be held at the Milan high school. Ag. room beginning at 4 p.m. and lasting until 9 p.m.

Extension personnel, Dr. Charles Sheppard, Gal Plegal and Henry Lutzeler from the Poultry Department, Michigan State University, will be present to discuss the topics.

Dates and topics are as follows: Nov. 3 — Pullets, Lighting, Vaccination, Feeding, Buildings, Contracts and Strain Selection. Nov. 10 — Keeping the Poultry Flock Healthy. Nov. 17 — Feeds and Nutrition. Nov. 24 — Housing and Equipment.

**DOG GETS FIRST AID**  
Twoants, Italy — When doctors finished giving two patients first aid, they noticed a dog waiting next in line. The dog howled for attention and the doctors found it slumped on one leg and treated it. The bandaged dog wagged its tail in thanks and left.

"The people, the President, the Congress were equal to the challenge." Thus did Senate Majority Leader Mike Mansfield sum up this past year.

The Congress met a great tragedy with a constructive legislative record in which I am proud to have had a part. Here are just a few highlights of the accomplishments of the 88th Congress:

—the biggest federal income tax cut in history;  
—the Test Ban Treaty, gaining an immediate cessation of above-ground testing;  
—the Civil Rights Act, achieved with heavy bipartisan majorities in both Houses, in spite of a protracted Senate filibuster;

—the antipoverty program, with its youth conservation camps and incentives to local governments providing an investment in the skills and strength of our people;  
—establishment of a 14-member National Commission on Technology, Automation, and Economic Progress—a bill of which I was the Senate sponsor;

—Small Business Administration disaster loans to cover all natural disasters, such as our Great Lakes botulism disaster; an omnibus Securities and Exchange Commission reform bill to protect the American investor; extension of the Hill-Burton Hospital Construction Act, the Federal Airport Act, and the highway program;

—the Wilderness Act, climaxing nearly ten years of effort, and the Land and Water Conservation Fund to aid in acquisition and development of outdoor recreation areas;

—the Fire Island National Seashore (N.Y.), the Ozark National Rivers (Mo.), and the Canyonlands National Park (Utah);  
—a program of grants to states and localities to assist in solving our cities' mass transportation problems;

—a 15-member bipartisan Commission on Food Marketing (Developed in part from our hearings on packaging and labeling) to which I have been appointed by the President of the Senate;  
—a national food stamp program that enhances the dignity as well as the diet of millions of Americans;

—two mental health programs to combat mental illness;  
—the most substantial advances in education legislation in the nation's history: medical training aid, college construction, vocational education, library services, National Defense Education Act extension and expansion;

—and finally, defeat of legislation designed to set aside the Supreme Court decision with respect

to the rights of the individual in representation — the apportionment of amendment.

The big disappointment, of course, was the failure to secure House approval of Medicare. But we came so close this year, after Senate passage, that an additional push from those at home should see us over the top in the next Congress.

How to sum it up? The Washington Post of Oct. 6, says: "It was, on balance, a great Congress. Its members worked long, hard and effectively on issues of the greatest complexity and difficulty." Thanks for letting me share in representing Michigan.

### Creation of Community College Urged

About half of Washtenaw county's high school graduates are in need of advanced education, but facilities for them do not now exist, a University professor declared last week.

Professor Raymond J. Young, consultant on community college affairs and an examiner for the North Central Association of Universities and Colleges, urged creation of a community college in Washtenaw County.

He spoke last week at Detroit High school to a group of Milan, Chelsea, Dexter, Saline, Manchester and Whitmore Lake community leaders, making his statements on behalf of the Committee for a Washtenaw County Community College.

Young said that the high school graduates of which he speaks are "good material" for higher education, but cannot today meet entrance standards at the University of Michigan and Eastern Michigan University.

Young urged creation of a county community college with strong emphasis on post high school occupational as well as academic education, "as the best solution to the problem."

Mrs. Florence Mayer represented the Chelsea School District; Paul Bosel, Dexter; Mrs. Elizabeth Grossman, Manchester; Ewan C. Jones, Milan; Allan Grossman, Saline; Charles Applegate, Whitmore Lake.

There are more than 8,000 bridges on Michigan's highway system.

A Standard Want Ad Will Sell Your Unused Items.

Better Living Begins When You Own A New Home  
**CONSIDER LANEWOOD**

# NOTICE

Those residents in front of whose homes new sidewalks have been built or repairs made are warned **NOT TO USE SALT** on the walks this winter.

Salt used on new cement severely damages the walks and **MUST NOT BE USED.**

## VILLAGE of CHELSEA

GEORGE WINANS, Clerk

### PRIZE WINNERS DUTCH BOY FALL PAINT SPECIAL

- Prize ..... 2 Gal. Paint  
Robert Cook, Gregory
  - Prize ..... 1 Gal. Paint  
Mrs. David Lixey, Chelsea
  - Prize ..... 1 Gal. Paint  
Harvey Heining, Chelsea
  - Prize ..... Paint Roller Set  
George Frisinger, Chelsea
- Winners are requested to claim prizes before Nov. 9

# MERKEL BROS.

As advertised in LIFE

## HOW TO look like a million — without spending more than \$50.00



Don't be surprised if you're taken for a millionaire when you wear a Brookfield Suit. They're superb pure worsted... in the newest models... and beautifully tailored! Try one on and see how well you'll look!

### 100% WORSTED SUITS Brookfield

Trieter's Men's Wear  
"The Place To Go for Brands You Know"

## Leaf Pick-Up Now Underway By Village Crews

Residents urged to complete raking as soon as possible.

ABSOLUTELY NO BURNING ON BLACK-TOP.

### VILLAGE OF CHELSEA

PUBLIC WORKS DEPARTMENT


RE-ELECT YOUR EXPERIENCED WASHTENAW COUNTY OFFICIALS

## VOTE REPUBLICAN NOVEMBER 3

RE-ELECT **JOHN H. FLOOK** Drain Commissioner

14 Years Experience  
REPUBLICAN

Remember Your County Officers Who Conduct The Day-To-Day County Business Economically, Efficiently and With Integrity.




As Attorneys in Chelsea We Endorse

## Francis L. O'Brien

for Judge of the Court of Appeals

Your Vote Will Be Appreciated

JOHN P. KEUSCH      HAROLD A. JONES  
WILLIAM J. RADEMACHER      JAMES P. TRYAND  
CHANDLER A. ROGERS      JAMES C. HENDLEY  
GERALD D. GROHNERT



# FOOTBALL CONTEST



DACRON  
INSULATED JACKETS  
\$9.95 to \$18.95

JARMAN DRESS SHOES  
RED WING WORK SHOES

**FOSTER'S MEN'S WEAR**  
MINNESOTA vs. INDIANA

**VARSITY JACKETS**  
FOR MEN and BOYS

Varsity Sweaters - Bulldog Sweatshirts  
Also Michigan and Michigan State Sweatshirts

**STRIETER'S MEN'S WEAR**  
"The Place To Go for Brands You Know"  
MILAN vs. GROSSE ILE

**G. A. SALES & SERVICE**

Authorized Dealers  
CHRYSLER  
DODGE - PLYMOUTH

3231 Manchester Road Phone 475-8761  
CHELSEA vs. SALINE

**GIFTS**  
STAINLESS STEEL  
SILVER - CHINA  
KEEPSAKE DIAMONDS  
BULOVA - ELGIN - WYLER  
WATCHES  
TRANSISTOR RADIOS

**Winans Jewelry Store**  
Quality Merchandise Always  
DEXTER vs. LINCOLN CONSOLIDATED

**RCA VICTOR**  
The Most Thoroughly Proved  
**COLOR TV**  
You Can Buy!

Come in let us show you how easy  
it is to own an RCA Victor color television.

**GAMBLES**  
MANCHESTER vs. U. HIGH

AUTHORIZED  
**BUICK and OLDS DEALER**

Come in and let us explain how you can drive a  
really fine automobile at a price that will amaze you.

**Daniels Motor Sales, Inc.**  
DETROIT LIONS vs. LOS ANGELES RAMS

**ZENITH**  
The most respected name in  
**COLOR TV**  
Come in for a no obligation demonstration.

**MEABON'S TV**  
MICHIGAN STATE vs. WISCONSIN

Featuring  
**SWIFT'S SELECT  
FRESH MEATS**

Dairy Products - Frozen Foods  
Carbonated Beverages  
Party Snacks

**SCHNEIDER'S**  
OHIO STATE vs. IOWA

## Win Cash Prizes

in the  
**CHELSEA FOOTBALL CONTEST**

1st Prize - \$7<sup>50</sup>  
2nd Prize - \$2<sup>50</sup>

Duplicate Prizes in each of 2 Categories  
1 set for ages 17 and up; 1 set for ages 16 and under.

**CONTEST RULES**

Join in the fun! You can win cash prizes each week, paid by The Chelsea Standard, to the persons guessing the most winners of the high school, college and pro football games, listed on this page. Shop the ads, read the rules and find how you can cash in!

1. Read every ad on this page. An important game will be listed in each ad for your selection.
2. On an official entry form, available in each participating merchant's store, write the name of each merchant listed on this page, and after the name, the name of the team you select as the winner of the game listed in his ad. List in sequence 1 to 20, beginning at the top left and proceeding down and across the page. Do not use this page for entry.
3. Be sure to print your name and address and age plainly on your entry.
4. Deposit your entry in the official deposit box in Chelsea State Bank no later than 5 p.m. Friday or in mail addressed to The Chelsea Standard. Mailed entries must be postmarked no later than 6 p.m. Friday and received at The Standard office Saturday.
5. Contest winners will be announced each week in The Standard.
6. Only one entry per person is allowed. Anyone submitting more than one entry is automatically disqualified.
7. See copy above for tie-breaker. In case of tie the person guessing closest to the actual points scored in this game will be the winner.

**CHRISTMAS TREE LIGHT SET**  
15 lights, outdoor weatherproof wiring  
**FREE with \$9.95 worth of service**

**TOWER SHELL SERVICE**  
M-52 at I-94 Interchange Ph. 475-8918  
NEW YORK GIANTS vs. ST. LOUIS CARDINALS

Motor Tune-Up  
Front End Alignment  
Brakes - Tires  
Batteries - Accessories

**HANKERD'S SERVICE**  
501 S. Main Ph. 475-3541  
TEXAS vs. SO. METHODIST

**BOWLING IS GOOD FAMILY FUN**  
★ 12 Brunswick Automatic Lanes  
★ 4 Brunswick Billiard Tables

**CHELSEA LANES**  
ALABAMA vs. MISSISSIPPI STATE

**5 GREAT NEW CARS TO CHOOSE FROM**  
Chevrolet - Chevelle - Chevy II  
Corvette - Corvair

**Spaulding Chevrolet Sales & Service**  
CHICAGO BEARS vs. DALLAS COWBOYS

**COMPLETE PRESCRIPTION SERVICE**  
Free Delivery in Chelsea  
4 Registered Pharmacists to serve you  
24 Hours A Day

VISIT OUR SODA FOUNTAIN

**CHELSEA DRUG**  
Phone 475-4611  
WESTERN MICHIGAN vs. MARSHALL

VISIT OUR  
**MEN'S and BOY'S DEPT.**  
and select from these famous names

★ HEALTH-TEX ★ WRANGLER ★ VAN HEUSEN  
★ HANES ★ BIG YANK ★ BLUE BELL  
★ LEVI'S ★ CAMPUS ★ CARHARTT

**DANCER'S**  
3 FLOORS OF VALUES - CHELSEA  
KALAMAZOO COLLEGE vs. ADRIAN

**LOW COST AUTO LOANS**

Let us help finance your new car

**CHELSEA STATE BANK**  
MICHIGAN vs. NORTHWESTERN

**MUSTANG Headquarters**

**PALMER MOTOR SALES, INC.**  
50-YEAR DEALER  
SLIPPERY ROCK vs. LOCKHAVEN

Good Luck, Bulldogs

★  
Grove  
5c to \$5.00 Store  
OLIVET vs. HOPE

State Farm Insurance Companies  
AUTO - FIRE - LIFE  
PACKAGE PLANS

Good Luck to the Bulldogs

**WALLACE WOOD, AGENT**  
Phone GR 3-3341  
NOTRE DAME vs. NAVY

HUNTING LICENSES  
FALL SPORTING GOODS  
HEADQUARTERS

New and Used Guns - We Trade

**MERKEL BROS.**  
ILLINOIS vs. PURDUE

**BROASTED CHICKEN DINNERS**

SANDWICHES - LUNCHES  
MALTS - SHAKES

Good Luck, Bulldogs

**F & M Fine Food**  
GREEN BAY PACKERS vs. MINNESOTA VIKINGS

# BOWLING NEWS

**Nite Owl League**  
Standings as of Oct. 28

W	L
Men's Wear	21 6 1/2
Go Garage	17 11
Drug	10 18 1/2
No. 11	16 12
State Bank	14 18 1/2
Automotive	14 18 1/2
Electric	13 19
Heat Plant	13 19
Lough Lake Store	12 19
Shell	11 19 1/2
Plastering	9 19 1/2

**Junior House League**  
Standings as of Oct. 22

W	L
Farrell Sheet Metal	23 0
Wolverine Tavern	20 12
Blatz Beer	19 13
Dancer's	18 14
Palmer's T-Birds	17 15
Chelsea Spring	10 16 1/2
Jaffy Mixer's	15 17
Gambles	14 18
Wolverine Tavern 3	14 18
Western Auto	14 18
Chelsea Mfg. Corp.	13 18 1/2
Slocum Construction	8 24

**Rolling Pin League**  
Standings as of Oct. 27

W	L
Mixers	7 1
Kookie Kutters	6 2
Mopner Uppers	6 2
Pots	6 2
Grinders	4 4
Spooners	4 4
Coffee Cups	2 6
Edge Beaters	2 6

## Sports Corner

**AMERICAN FOOTBALL LEAGUE**  
**AL DAVIS**  
WHO PERFORMED A MIRACLE WITH THE CALLAND RAIDERS...



34 YEAR OLD DAVIS REUNITE WITH A CLUB THAT MADE HIM FAMOUS AND HAD EXTENDED A LOSING STREAK TO 8 GAMES IN 1963 INTO THE CALLAND RAIDERS... MORE AMAZING IS THE FACT THAT DAVIS HAD NEVER HELD A MAJOR HEAD COACHING JOB PRIOR TO ACCEPTING THE RAIDER'S ASSIGNMENT. HE IS ALSO THE RAIDERS' GENERAL MANAGER...

## HONOR ROLL

**First Marking Period**  
Oct. 22, 1964

12th Grade—Robert Allen, Beverly Arntz, Leota Barnhill, John B. Ling, Valerie Burghardt, James Cameron, Gary Cook, Barbara Doyle, Katherine Eder, Julie Eismann, Jane Falst, David Frisinger, George Gary, Carol Hatley, (All A), Paul Huber, Grace Kuchmaul, Richard Launon, Billy Ledford, Jerry Manzel, Richard McCalla, Deborah Miller, Dwayne Osterle, Sandra Osborne, Alyce Riemschneider, Linda Sanders, (All A), Lee Satterthwaite, Cindy Schumm, Thomas Sharrard, Kathy Sutter (All A), Linda Wahl (All A), Audrey Wengren, William Wenk, Chris Wieland, Edward Windell, Diane Worden.

## NO CURL

Good news for the home sewer—a new kind of cotton flockback. It's a no-iron variety, which means the edges won't curl after washing.



**DUDLEY K. HOLMES**, son of Mr. and Mrs. Dudley Holmes, 146 E. Middle St., is playing for the Hope College Flying Dutchmen this season. Dud was All-Conference, All-County, and All-State halfback in class B last year. He also plays basketball, baseball and track. He is a freshman weighing 170 lbs. and 5'10".

**Women's Inter-City League**  
Standings as of Oct. 20

W	L
Beauty Salon	18 4 1/2
Bowling Club	16 12
Go Bank	13 15
Wolverine Tavern	12 15 1/2
Drugs	11 17
Farm Supply	11 17
Fibre Products	10 18

**Chrysler Proving Grounds**  
Standings as of Oct. 27

W	L
Foot Mobil Service	22 10
Triangle	21 10 1/2
Frigid Products	21 11
The Pub	17 15
G.A. Sales	18 18
Maytag	18 18
Wolverine Bar	13 18 1/2
Schlitz	11 21
Chelsea Lanes	8 24

**Chelsea Women's League**  
Standings as of Oct. 21

W	L
Chelsea Lanes	25 3
Chelsea Cleaners	10 14 1/2
Hankert's	16 14 1/2
Jiffy Mixers	15 13
Modern Beauty Shoppe	15 13
Chelsea Milling Co.	15 13
Don's Standard	14 13 1/2
Wunder Bar	14 14
Foster's Men's Wear	11 17
Chelsea Grinding Co.	8 19 1/2
Schneider's	8 19 1/2
Dancer's	5 22 1/2

**Senior House League**  
Standings as of Oct. 26

W	L
Spaulding Chevrolet	21 0
Drewry's Beer	10 7
Soltz's Tavern	17 11
Chelsea Grinding Co.	15 12 1/2
GE Boys	14 14
Merkel 49ers	14 14
Sylvan Center	13 15
Chelsea Products	12 16
Schneider's	12 16
Wolverine Tavern 1	11 17
Daniels Buick Olds	10 17 1/2
Wolverine Tavern 3	9 10

**Billiards**  
**Chelsea Sharp Shooters**  
Standings as of Oct. 20

W	L
Fahrner-Schenk	25 3
Cross-Schauer	16 11 1/2
Labon-Pierce	13 14 1/2
Tribble-Marshall	12 15 1/2
Rowe-Blough	10 18
Moister-Marsh	6 21 1/2

**Sylvan Mixed League**  
Standings as of Oct. 16

W	L
Bowling Hounds	14 10
Strike Outs	14 10
Sandbaggers	13 11
8 B's & a R	11 13
The Jets	10 9
Sylvan Hotshots	10 9

**KIWANIS PANCAKE SUPPER**  
CHELSEA HIGH SCHOOL CAFETERIA  
MONDAY NIGHT, NOVEMBER 9  
Serving 5:30 to 8:00 p.m.

**WOLVERINE TAVERN**  
1 Block North of Bowling Alley on Old US-12  
SERVING YOUR FAVORITE BEER - WINE and ALE  
HOME-MADE CHILI HAMBURGS SANDWICHES  
CARL - NINA DON - GINNY

**Chelsea Suburban League**  
Standings as of Oct. 21

W	L
Royal Lancers	19 9
GE-Gals	19 9
Colonial Manor	18 10
State Farm Ins.	16 12
Miller's Grocery	16 12
Altes Beer	14 14
Waterloo Garage	12 16
Catty Ann Shoppe	11 17
Lower Shell	11 17
Tail Blazers	11 17
Dancer's Dn Stars	11 17
Chelsea Products	10 18

**Farm Census Data Due In November**  
A team of census enumerators will visit all farms in Washtenaw county in November and December to collect official census questionnaires from farm operators. The census will be taken in the following way: Shortly after Nov. 5, the Bureau of the Census, an agency of the U. S. Department of Commerce, will mail census questionnaires to all rural householders. Those requested to fill out the forms should do so and hold the questionnaires until a census enumerator comes to collect them. At that time, the enumerator will help answer any questions that may have proved troublesome. The Census of Agriculture is taken every five years in years ending in '4' and '9' to gather information on the nation's agricultural resources and production. Such information is vital in making decisions affecting major segments of the U. S. economy. Data gathered includes the number and size of farms, acreage and harvest of crops, livestock inventories, and information on farm equipment and improvements and income and some production expenditures. The information will be published starting in 1965 for counties, states, and the nation.

**MONDAY NIGHT, NOVEMBER 9**  
Serving 5:30 to 8:00 p.m.  
All You Can Eat!  
Pancakes, Sausage, Applesauce, Coffee or Milk.  
Adults and High School Students: \$1.00  
Grade School Students: 50c  
SPONSORED BY KIWANIS CLUB OF CHELSEA  
All Proceeds to Chelsea Area Community Projects.

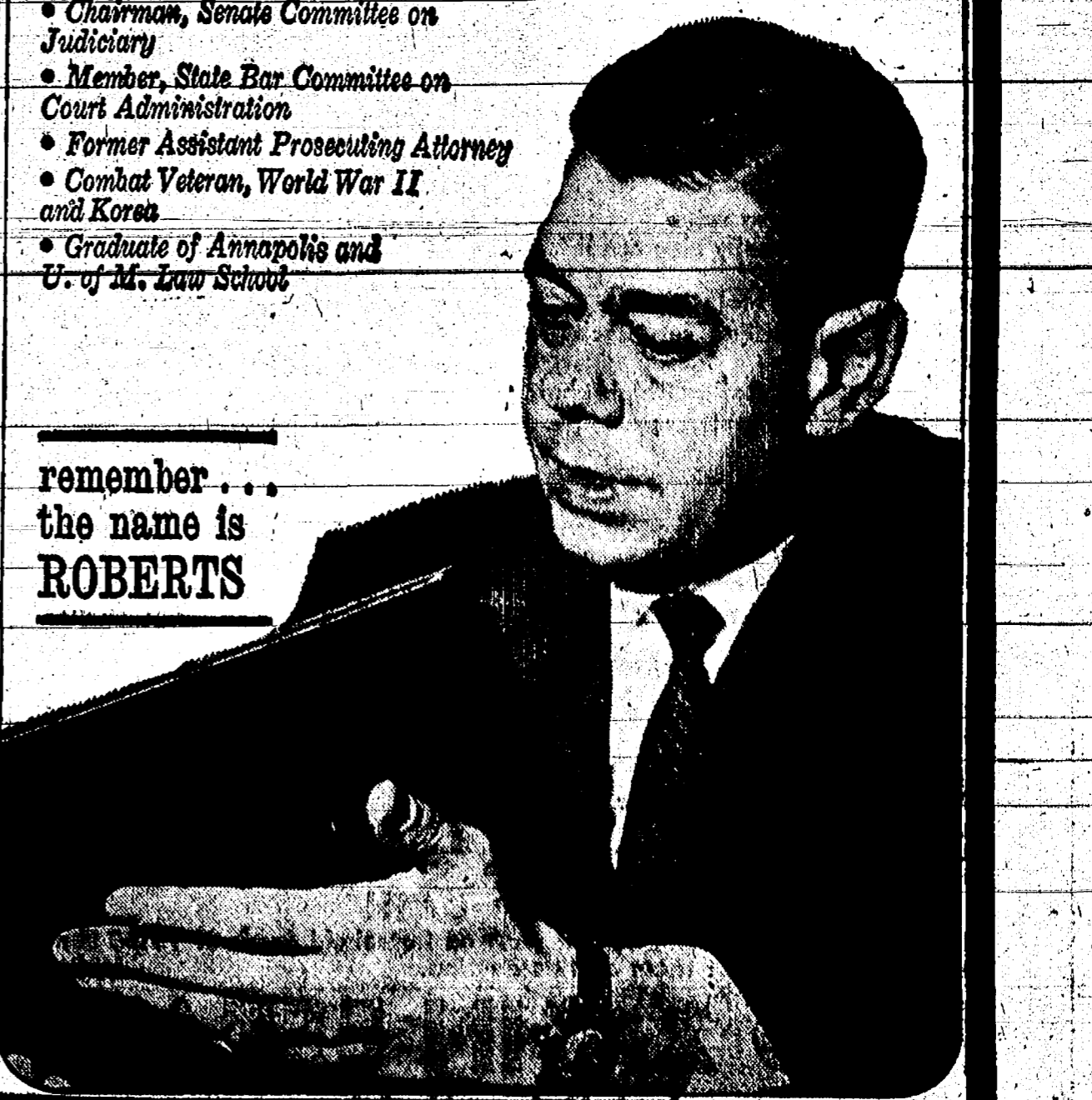
**FISH FRY**  
Serving from 5 p.m. to 9 p.m.  
EVERY FRIDAY NIGHT  
DANCING AT ALL TIMES  
**WONDER BAR**  
20750 Old US-12 West Phone 479-9841

**Lindsay Water Softening**  
VERN SPRAGUE, Owner  
220 CHAPIN ANN ARBOR  
Unlimited Soft Rust-Free Water  
Rentals as low as \$5 per month.  
CALL Ann Arbor 761-0050  
on Display at Meabon's  
(Political Advertisement)

**ELECT ROBERT P. BRIGGS**  
Republican  
—SIX YEAR TERM—  
MEMBER OF THE STATE BOARD OF EDUCATION  
EDUCATOR — BUSINESSMAN — CIVIC-MINDED CITIZEN  
LOOK FOR THE NAME ON YOUR BALLOT OR VOTING MACHINE  
ROBERT P. BRIGGS  
General Election November 3, 1964

**Just Having Fun Or To Improve Your Average BOWL at CHELSEA LANES**  
JUNIOR GIRLS BOWLING LEAGUE  
STARTING SATURDAY, OCT. 31  
Girls 9 thru 16 years interested in bowling should phone now.  
**CHELSEA LANES**  
"The Modern Family Lanes"  
1180 M-52, Chelsea Phone 475-8141

non-partisan/2nd district  
**vote for FARRELL E. ROBERTS**  
court of appeals  
remember... the name is ROBERTS  
• Outstanding State Senator  
• Author, Court of Appeals Act and Community Mental Health Law  
• Chairman, Senate Committee on Judiciary  
• Member, State Bar Committee on Court Administration  
• Former Assistant Prosecuting Attorney and Korea  
• Graduate of Ann Arbor and U. of M. Law School



(Political Advertisement)

**ELECT**  
**DEMOCRATIC CANDIDATE**  
**MRS. LISA MENGE**  
**LYNDON TOWNSHIP CLERK**  
 at the Nov. 3 Election  
*Honest and Efficient*

**HAM DINNER**  
 Sponsored By St. Mary's Church  
 at Chelsea High School Cafeteria  
**SUNDAY, NOV. 8**  
 Serving from 12:30 to 3:00 p.m.

ADULTS: \$1.50 - CHILDREN: 75c

For tickets or reservations  
 Call Mona Dean Carpenter or Mrs. W. A. Steger

**FOR PROFIT**

**FEED**

HERE'S HOW TO GET RESULTS...

Plan your feeding program around Fortified Feeds, scientifically compounded to increase growth, production.

**Farmers' Supply Co.**  
 Phone GR 5-5511

**AGRICULTURE**  
**in ACTION**

By M. L. Wood

**\* He'd Rather Switch**

This is a true election story that happened in Michigan. The story was first reported with slight changes throughout most states in an election year. A friend of ours decided to run for an elective office... nothing new or startling about that. He was a good man, and worthy of the honor.

But, he belonged to the wrong party. At least the voters thought so—for he was defeated by a whopping three-to-one margin.

Not a man to give up easily, he ran again—and still once more. Each time he was defeated—each time by about three-to-one!

That's when our friend decided to analyze the voter pattern—and he found that in his area the candidates of one party consistently won over their rivals by that three-to-one margin.

So—he decided to switch parties.

We forget right now whether he was a Democrat and decided to switch to the Republican party, or the other way around—but in any event, he switched and fled for the primary election as a candidate from the opposite party!

His competition was rough. There were five others on the same ballot, but when the votes were counted, our man had finally won the nomination.

Ironically, at the same time, he also won in the opposite party... as a precinct delegate to the opposite party-convention!

Now, what does all this mean? It means that voters tend to vote for the party, rather than the man and his record. It means that in areas dominated by one party, candidates can often ride to victory on party coat-tails.

Perhaps this is something to think about when Michigan voters consider a change in our election laws to allow use of the "Massachusetts" ballot. Those who support a "Yes" vote on the referendum to allow this change say that with the Massachusetts or "office block" ballot, voters will be more likely to vote for the man and his record, rather than for the party.

**AIDS THIEF IN ROBBERY**

Los Angeles, Calif.—While waiting for his wife to come from the doctor's office, Napoleon Thomas was surprised when a man jumped in the car, brandished a pistol and said "get going." Later the man ordered him to stop in front of a bank, go in and hold the money sack while he robbed the bank. The bandit ordered him to "wait" and fled in Thomas' car.

**Statistical Impact**

A very significant aspect of the rising number of part-time workers is its effect on the statistics of the employment and unemployment. The national total published each month for the number of unemployed adds indiscriminately those who are looking for full-time work and those who are looking for part-time work. Since the pattern and trend of unemployment differs among the two groups, this has a considerable impact on the combined figure.

New data just released by the Labor Department permit us to separate the full-time workers from the part-time group and examine their unemployment rates separately. Figures are available for comparing the trends between May, 1957, and May, 1964.

**Significant Trend**

The first interesting fact which emerges is that the unemployment rate for part-time workers was slightly lower than the rate for full-time workers in May, 1957, but it was substantially higher in May 1964. Between the two dates the number of unemployed in the

**Part-Time Job Seekers Increase . . .**

Although the great majority of the American labor force consists of full-time workers, a substantial, and apparently growing, proportion is made up of those who choose to work part-time. In May, 1964, the part-time workers accounted for 14 percent of the total labor force, as compared with 11 percent in May, 1957.

This is a fact of some interest in itself, since it illustrates the adaptability of the economy to the special circumstances of individual workers on the one hand and to the special requirements of certain employers on the other. The part-time labor force consists mainly of women and teen-agers. Part-time employees are concentrated in the trade and service industries.

**NEW IDEA HOME DECORATIONS**

New gold-quilted accessories are bringing order to chaos in mid-lady's closets, putting an end to countless closet hunts for shoes, handbags and umbrellas with a trio of useful hanging wardrobes.

Illustrated is the hanging hand-bag holder which has 8 generous size, glass clear pouches that can individually handle jumbo size handbags or store 2 smaller purses. There is room for a dozen or more handbags in this closet accessory.

A hanging shoe closet, fashioned of the same golden quilted vinyl, takes up but five inches of closet space, comes in three models holding 6, 12 or 18 pairs of shoes. An umbrella holder, which hangs conveniently from a closet rod, holds four umbrellas.

**The NATIONAL OUTLOOK**  
 By GEORGE HAGEDORN

**\* Part-Time Job Seekers Increase . . .**

full-time labor force increased by one-fifth, while the number in the part-time labor force more than doubled. This, plus the fact that the part-time group now has a larger weight in the total, accounts at least in part for the growth in unemployment between the two periods.

A comparison with 1957 is especially significant since the first half of that year is the last period in which total unemployment was about 4 percent of the labor force—a level which the government economists regard as the target at which we should aim our current policies.

But we already have hit the 1957 target with respect to the largest and most critical segment of the labor force—adult male full-time workers. The unemployment rate among men twenty or older, who are full-time members of the labor force, was 3.2 percent in May, 1964—and exactly the same figure in May, 1957.

The fact that the increase in unemployment has been concentrated among part-time workers, women and teen-agers should not be grounds for complacency. But it does throw an illuminating sidelight on the nature of the unemployment problem. It raises a question as to whether general steps for stimulating the whole economy are the proper means for dealing with this kind of situation.

**NUTRITION**

All kinds of liver are excellent sources of good quality protein, iron, riboflavin and niacin.

**Youth Urged To Join 4-H Science Club**

Information explaining the new 4-H TV Science Club and enrollment materials are being distributed to all 4th, 5th and 8th grade classes in Chelsea, Dexter, and Manchester schools according to Mrs. Cora Wise, county extension agent.

Mrs. Wise reports that the 4-H TV Science club features a series of 10-minute TV programs designed to teach basic scientific principles. The series will be seen on WNSB-TV Channel 10 in East Lansing at 11:30 a.m. starting on Saturday, Nov. 7, or 8 p.m. starting Wednesday, Nov. 11.

Parents are encouraged to have their children enroll in this educational TV program, according to the instructions given on the materials given to each boy or girl at school.

If additional information is desired, contact your County Extension Office at Ann Arbor, telephone 683-7511, Extension 227. Enrollment materials will be forwarded on request.

Members may enroll directly by sending a post card to 4-H TV Club, State 4-H Office, Michigan State University, East Lansing. Be sure to give member's name, address, age and county when enrolling directly.

Members enrolled will receive by return mail their membership pin, card and 4-H TV Science Manual designed to help them carry out simple science projects explained on the TV program each week.

**Saline Area 4-H Girl Wins Top Dairy Award**

A Washtenaw county 4-H'er has been awarded one of the highest awards given in the Michigan 4-H club program.

Kay Diane Gordon, 17, of Saline has been given a wrist watch for her excellent record in the 4-H Dairy Foods project by the Carnation Co., of Los Angeles, Calif.

The daughter of Mr. and Mrs. David Gordon, Kay has stressed the use of dairy foods in her home and local community during her eight years as a 4-H club member. She has presented dairy food programs on radio, television and various study groups throughout her county.

A member of the Busy Workers 4-H club, she has completed projects in foods, freezing, clothing, dairy, canning and junior leadership. Kay is a senior at Saline Area High school and plans to study home economics upon graduation.

**4-H Calendar**

Oct. 29—7:30 p.m., Junior Leadership school, Room 1 and 2, Co. Building. The county 4-H Club Leader school will be Thursday, Oct. 29 at 7:30 p.m. This year's school is planned mainly for 1st- and 2nd-year Junior Leaders and other interested 15- and 16-year-old 4-H members.

(Political Advertisement)

**VOTE VIVIAN**  
**U.S. CONGRESS**  
**DEMOCRAT**

Was Vivian, Democratic Candidate for Congress, an electrical engineer, and a vice-president of the Conduction Corporation, is deeply concerned with the major issues of economic growth, human rights, education, maintaining peace, natural resources, farm problems, and assistance to older citizens. He is determined to bring positive action to bear on these and other issues as they arise.

(Was Vivian-for-Congress Committee, Seth Tuttle, Chm.)

(Political Advertisement)

**ELECT JOHN B. MCGILL**  
 - FOR -  
**WASHTENAW COUNTY CLERK**  
 DEMOCRAT

*Interested in People*

(Political Advertisement)

**ELECT Doug HARVEY Sheriff**  
 "YOUTH" — "AMBITION" — "EXPERIENCE"  
 End wasted taxpayers' dollars!  
 Dedicated to "Clean Up A Bad Situation"

6 1/2 Years Ypsi Police 5 years Deputy Sheriff  
 2 years vice squad Washtenaw County

**VOTE FOR DOUG HARVEY NOV. 3**  
 (Paid for by Friends)

**PUBLIC AUCTION**

In order to settle the undersigned estate, the following described personal property will be sold at public auction at the farm located 7 miles west of Ann Arbor on Scio Church Road to Parker Road south 1 mile, corner Parker and Waters Road.

10:30 A.M. **Saturday, October 31** 10:30 A.M.

Phone Stockbridge 851-2172 **PRICE BROS., Auctioneers** Phone Stockbridge 851-2172

**Antiques — Household Goods**

Frigidaire 4 burner electric range, good condition	Quantity antique picture frames, stands, throw rugs, dishes, cooking utensils, cedar barrels, crocks, fruit safe, trunks, small appliances
Wood and coal cook range	Hundreds of small articles, blankets, etc.
G.E. 8 cu. ft. refrigerator	<b>FARM TOOLS — MISC.</b>
Antique kitchen table, 4 antique chairs	Allis Chalmers W.C. tractor and cultivator
Speed Queen automatic washer	John Deere 4 wheel manure spreader
Antique drop leaf table, nice condition	3 section harrow
8 piece dining room suite	Rubber tired wagon and rack
Mahogany twin beds with dresser and chest of drawers to match	New Idea hay loader
2 piece mohair living room suite	11 hole grain drill
3 piece bedroom suite, really nice condition	Case 5 ft. mower
Antique cane chairs	McCormick corn binder
Large antique cupboard, really nice	John Deere corn planter
3 piece upholstered antique set, 2 chairs and settee	John Deere rake
Antique doll buggy	Grain binder
Antique bed springs and mattress	Iron wheel wagon
2 antique straight chairs	3 section harrow
Chest drawers	2 section spike harrow
Antique churn 150 years old	Wood wheel wagon
Card table	Set bob sleighs
Small rocker	Walking plow
Occasional chairs	Antique hay tedder
Floor lamps	2 horse cultivator
End tables	Fanning mill
9' x 12' wool rug	24 ft. extension ladder
Antique single bed	Board scraper, hog crates, cream separator,
Antique butter bowls	2 cauldron kettles, corn sheller, bench vise, hog crates
China dishes, set for 12	Quantity forks, fence posts, lumber, wagon box, large canvas
Electrolux sweeper	Large amount of other items
Antique globe lamp	
International 11 cu. ft. chest freezer	<b>CAR</b>
Large carpet	1928 Model A tudor, fairly good condition

Not responsible for accidents Lunch stand on grounds

**TERMS: CASH**

NOTE: This is a very large sale, we will start on household goods at 10:30 sharp. Talk about antiques, we have got them on this auction.

**FRED ZAHN ESTATE**  
 Jack Dulgeroff, Adm.

**'SNOW USE**  
 Putting Off Winter PROTECTION

Don't wait until the little woman gets you up at midnight to close out those cold winter drafts. Fix yourself some low-cost storm windows out of Warp's FLEX-O-GLASS. It's easy! Just cut with shears... tack over screens or frames... You'll be snug and warm all winter long and save up to 40% on fuel costs. Warp's genuine crystal-clear FLEX-O-GLASS lasts for years at a fraction the cost of glass. Only 90¢ a square yard at your local hardware or lumber dealer.

**WE HAVE the Genuine Warp's FLEX-O-GLASS**

• CRYSTAL CLEAR • CUT, TACK, SEAL or SEAL • HUNDREDS OF SIZES • INDOORS & OUTDOORS

Only 90¢

**MERKEL BROS.**

**TO THE LYNDON TOWNSHIP VOTERS**

We, the following slate of candidates of the Democratic Party pledge a new deal in Township Government for the Township of Lyndon—honest, progressive, fair.

GERALD GROHNERT . . . . . Supervisor  
 LISA MENGE . . . . . Clerk  
 MARLENE O'CONNOR . . . . . Treasurer  
 LESLIE EISENBEISER . . . . . Trustee  
 ORSON BEEMAN . . . . . Justice of the Peace  
 THOMAS KRAMER, SR. . . . . Constable  
 RICHARD MENGE . . . . . Constable  
 JAMES MOORE . . . . . Constable  
 JOHN MEINEL . . . . . Constable

**OPEN HOUSE, SAT., OCT. 31**  
**LYNDON TOWNSHIP HALL - 8:30 p.m.**  
 North Territorial Road near M-52

**PUBLIC CORDIALLY INVITED**  
 Refreshments of cider, doughnuts and coffee will be served.

**ALL THE WAY WITH LBJ**