

FRANK T. MARTINEZ  
City Clerk

KAREN E. KALFAYAN  
Executive Officer

When making inquiries  
relative to this matter  
refer to File No.

04-1874

CD 2

February 15, 2007

Bureau of Engineering  
Bureau of Street Lighting  
Board of Public Works  
Councilmember Greuel

Controller, Room 300  
Accounting Division, F&A  
Disbursement Division  
City Attorney  
Chief Legislative Analyst

# CITY OF LOS ANGELES

CALIFORNIA



ANTONIO R. VILLARAIGOSA  
MAYOR

Office of the  
**CITY CLERK**  
Council and Public Services  
Room 395, City Hall  
Los Angeles, CA 90012  
Council File Information - (213) 978-1043  
General Information - (213) 978-1133  
Fax: (213) 978-1040

CLAUDIA M. DUNN  
Chief, Council and Public Services Division  
[www.cityclerk.lacity.org](http://www.cityclerk.lacity.org)

RE: ABANDONING ALL PROCEEDINGS RELATING TO THE IMPROVEMENT AND MAINTENANCE OF THE  
SHERMAN WAY AND RANCHITO AVENUE (REBALLOT) LIGHTING DISTRICT

At the meeting of the Council held February 6, 2007, the following action was taken:

Motion adopted to approve Bureau of Street Lighting report .....	_____
Attached report adopted .....	_____
Attached resolution ( - ) adopted .....	_____
Mayor concurred .....	_____
FORTHWITH .....	_____
Ordinance adopted .....	_____ X _____
Ordinance of Intention adopted .....	_____
Ordinance number .....	178396
Effective date .....	02-23-07
Posted date .....	02-13-07
Mayor approved .....	02-12-07
Set for Hearing .....	_____
Mayor vetoed.....	_____
Motion adopted to approve attached report recommendation(s) .....	_____
Motion adopted to approve communication recommendation(s) .....	_____
To the Mayor FORTHWITH.....	_____
Mayor failed to act - deemed approved .....	_____
Findings adopted .....	_____
Generally Exempt.....	_____

*Frank T. Martinez*

City Clerk  
me

PLACE IN FILES  
FEB 21, 2007  
DEPUTY

*OK*



OFFICE OF THE MAYOR  
RECEIVED  
Mayor's Time Stamp  
2007 FEB -7 PM 1:10  
CITY OF LOS ANGELES

TIME LIMIT FILES  
ORDINANCES

RECEIVED  
CITY CLERK'S OFFICE  
City Clerk's Time Stamp  
2007 FEB -7 PM 12:59  
CITY CLERK  
BY \_\_\_\_\_ DEPUTY

COUNCIL FILE NUMBER 04-1874 COUNCIL DISTRICT 2  
COUNCIL APPROVAL DATE FEBRUARY 6, 2007 LAST DAY FOR MAYOR TO ACT FEB 20 2007  
ORDINANCE TYPE:  Ord of Intent  Zoning  Personnel  General  
 Improvement  LAMC  LAAC  CU or Var Appeals - CPC No \_\_\_\_\_

SUBJECT MATTER: ABANDONING ALL PROCEEDINGS RELATING TO THE IMPROVEMENT AND MAINTENANCE OF THE  
SHERMAN WAY AND RANCHITO AVENUE (REBALLOT) LIGHTING DISTRICT

	APPROVED	DISAPPROVED
MAJORITY PROTESTS (PROPOSITION 218)	<u>X</u>	_____
CITY ATTORNEY	<u>X</u>	_____
OTHER: _____	_____	_____

RECEIVED  
CITY CLERK'S OFFICE  
2007 FEB 12 PM 4:06  
BY \_\_\_\_\_  
CITY CLERK  
DEPUTY

FEB 12 2007

DATE OF MAYOR APPROVAL, DEEMED APPROVED OR \*VETO: \_\_\_\_\_  
\*VETOED ORDINANCES MUST BE ACCOMPANIED WITH OBJECTIONS IN WRITING PURSUANT TO CHARTER SEC. 250(b)(c)

(CITY CLERK USE ONLY PLEASE DO NOT WRITE BELOW THIS LINE)

DATE RECEIVED FROM MAYOR FEB 12 2007 ORDINANCE NO. 178396

DATE PUBLISHED \_\_\_\_\_ DATE POSTED FEB 13 2007 EFFECTIVE DATE FEB 23 2007

ORD OF INTENT: HEARING DATE \_\_\_\_\_ ASSESSMENT CONFIRMATION \_\_\_\_\_

ORDINANCE FOR DISTRIBUTION: Yes [] No []

FEB 13 2007  
ST LIGHTS, WOT

ORDINANCE NO. 178396

An ordinance of the City of Los Angeles abandoning all proceedings relating to the improvement of **SHERMAN WAY & RANCHITO AVE. (RE-BALLOT) Lighting District**, as contemplated by Ordinance No. 177894 and repealing that ordinance.

**THE PEOPLE OF THE CITY OF LOS ANGELES  
DO ORDAIN AS FOLLOWS:**

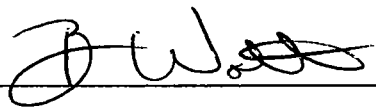
Section 1. All proceedings relating to the improvements contemplated by Ordinance of Intention No. 177894 are hereby abandoned.

Sec. 2. Ordinance No. 177894 approved September 20, 2006 is hereby repealed.

Sec. 3. The City Clerk shall certify to the passage of this ordinance and have it published in accordance with Council policy, either in a daily newspaper circulated in the City of Los Angeles or by posting for ten days in three public places in the City of Los Angeles: one copy on the bulletin board located at the Main Street entrance to the Los Angeles City Hall; one copy on the bulletin board located at the Main Street entrance to the Los Angeles City Hall East; and one copy on the bulletin board located at the Temple Street entrance to the Los Angeles County Hall of Records.

I hereby certify that the foregoing ordinance was passed by the Council of the City of Los Angeles, at its meeting of FEB 06 2007.

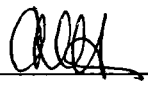
FRANK T. MARTINEZ, City Clerk

By  Deputy

Approved FEB 12 2007

 Mayor

Approved as to Form and Legality  
ROCKARD J. DELGADILLO, City Attorney

By  **CHRISTY NUMANO-HIURA**  
Deputy City Attorney

Date: 2-1-07

COUNCIL FILE NO. 04-1874

**DECLARATION OF POSTING ORDINANCE**

I, MARIA C. RICO, state as follows: I am, and was at all times hereinafter mentioned, a resident of the State of California, over the age of eighteen years, and a Deputy City Clerk of the City of Los Angeles, California.

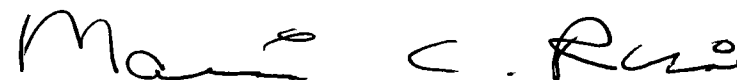
**Ordinance No. 178396 - Abandoning all proceedings relating to the improvement of Sherman Way & Ranchito Ave (Re-Ballot) Lighting District -**

**Ordinance of Intention - 177894** - a copy of which is hereto attached, was finally adopted by the Los Angeles City Council on **February 6, 2007**, and under the direction of said City Council and the City Clerk, pursuant to Section 251 of the Charter of the City of Los Angeles and Ordinance No. 172959, on **February 13, 2007** I posted a true copy of said ordinance at each of three public places located in the City of Los Angeles, California, as follows: 1) one copy on the bulletin board located at the Main Street entrance to the Los Angeles City Hall; 2) one copy on the bulletin board located at the Main Street entrance to the Los Angeles City Hall East; 3) one copy on the bulletin board located at the Temple Street entrance to the Hall of Records of the County of Los Angeles.

Copies of said ordinance were posted conspicuously beginning on **February 13, 2007** and will be continuously posted for ten or more days.

I declare under penalty of perjury that the foregoing is true and correct.

Signed this **13th** day of **February 2007** at Los Angeles, California.

  
Maria C. Rico, Deputy City Clerk

**Ordinance Effective Date: February 23, 2007**

**Council File No. 04-1874**

**CITY OF LOS ANGELES**  
INTER-DEPARTMENTAL CORRESPONDENCE

6

**DATE:** January 30, 2007

**TO:** Noreen Vincent, Assistant City Attorney  
Economic Development Division  
9<sup>th</sup> Floor, City Hall East - 140

**Attn:** Anissa Walker

**FROM:** Ed Ebrahimian, Director  
Bureau of Street Lighting

*R. Flamenco FC*  
**By:** Orlando Nova, P.E.  
Division Engineer  
Bureau of Street Lighting

**SUBJECT:** ORDINANCE OF ABANDONMENT FOR LIGHTING MAINTENANCE DISTRICT

Transmitted is the Ordinance of Abandonment for the lighting district listed below for your review and approval as to form and legality.

**SHERMAN WAY & RANCHITO AVE. (RE-BALLOT) LIGHTING DISTRICT**

Please telephone Shan Yu at (213) 847-1841 when ready for pick-up.

Thank you.

FRANK T. MARTINEZ  
CITY CLERK

KAREN E. KALFAYAN  
EXECUTIVE OFFICER

CITY OF LOS ANGELES  
CALIFORNIA



ANTONIO R. VILLARAIGOSA  
MAYOR

OFFICE OF THE  
CITY CLERK  
ELECTION DIVISION

ROOM 285  
200 N. SPRING STREET  
LOS ANGELES, CA 90012  
(213) 978-0444  
FAX (213) 978-0376

ARLEEN P. TAYLOR  
CHIEF OF ELECTIONS

January 30, 2007

The Los Angeles City Council  
City Hall, Los Angeles, California

REGARDING: ASSESSMENT BALLOT PROCEEDING FOR:  
SHERMAN WAY AND RANCHITO AVENUE (RE-BALLOT) LIGHTING DISTRICT  
COUNCIL FILE NUMBER 04-1874

Honorable Councilmembers:

In accordance with Proposition 218, the City of Los Angeles provided notice to the property owners of the parcels in the proposed Sherman Way and Ranchito Avenue (Re-Ballot) Lighting District, as specified in the subject Council File. Along with that notice, each property owner received an assessment ballot weighted by the amount of the parcel's proposed assessment. I have tabulated the assessment ballots delivered to my office by the final hearing date of January 16, 2007.

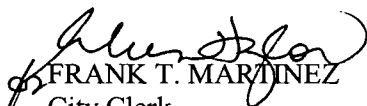
The proposed assessment district failed, because it received a weighted majority of "no" ballots as defined in Article XIII D (Proposition 218) of the State Constitution. As a result, the City may not impose an assessment for the improvement and maintenance of lighting in the proposed district. The certified results of the tabulations are attached. I have also forwarded a copy of these results to the Department of Public Works, Bureau of Street Lighting, for their information.

RECOMMENDATIONS FOR COUNCIL ACTION:

In accordance with Council policy adopted on December 19, 1997 (CF 97-0843) and the report of the Board of Public Works adopted by the Council on May 9, 1998:

1. FIND that a majority protest exists in the Street Lighting Maintenance Assessment District and therefore the proposed assessment cannot be enacted.
2. ADOPT the abandoning Ordinance attached to the Council File.
3. INSTRUCT the Director, Bureau of Street Lighting, to assure that the streetlights are not installed or are removed from service if previously installed, in accordance with Council policy.

Sincerely,

  
FRANK T. MARTINEZ  
City Clerk

Attachments

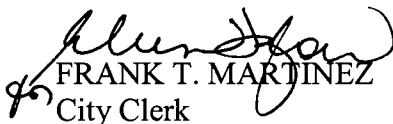
c: Department of Public Works, Bureau of Street Lighting

STATE OF CALIFORNIA            )  
  ) SS  
COUNTY OF LOS ANGELES        )

I, FRANK T. MARTINEZ, City Clerk of the City of Los Angeles, hereby certify to the City Council that three ballots were submitted on or before January 16, 2007, in connection with the assessment ballot proceeding for the proposed Sherman Way and Ranchito Avenue (Re-Ballot) Lighting Maintenance Assessment District, as specified in Council File Number 04-1874. I further certify the attached report to be a true, correct and complete tabulation of the returns of that assessment ballot proceeding.

IN WITNESS WHEREOF, I have hereunto set my hand and affixed my seal this 30<sup>th</sup> day of January 2007.

Sincerely,

  
FRANK T. MARTINEZ  
City Clerk



**Proposition 218 Assessment Ballot Tabulation for  
Sherman Way and Ranchito Avenue (Re-Ballot) Lighting District**

**Election # 2313**

**Final Public Hearing January 16, 2007**

**Council File# 04-1874**

**Ballot Tally**

Assmnt No.	County APN	Owner	Assessment Weight	Ballot Vote Y/N	Weighted Vote		No Vote/ Challenged
					Yes	No	
1	2216-005-003	Llerena	\$30.60	N		\$ 30.60	
2	2216-005-029	Padilla	\$16.39		Not Cast	Not Cast	
3	2216-005-030	Dumdum	\$16.39	N		\$ 16.39	
4	2216-005-031	Carranza	\$16.39		Not Cast	Not Cast	
5	2216-005-032	Arreseigor	\$16.39		Not Cast	Not Cast	
6	2216-005-033	Undjian	\$16.39		Not Cast	Not Cast	
7	2216-005-034	Roxas	\$16.39		Not Cast	Not Cast	
8	2216-005-035	Magpantay	\$16.39		Not Cast	Not Cast	
9	2216-005-036	Kechedzian	\$16.39		Not Cast	Not Cast	
10	2216-005-037	Briones	\$16.39		Not Cast	Not Cast	
11	2216-005-038	Buni	\$16.39		Not Cast	Not Cast	
12	2216-005-039	Abarghoei	\$16.39		Not Cast	Not Cast	
13	2216-005-040	Cortes	\$16.39		Not Cast	Not Cast	
14	2216-005-041	Avetisyan	\$16.39		Not Cast	Not Cast	
15	2216-005-042	Morato	\$16.39	Y		\$ 16.39	
		TOTAL	\$260.06			\$16.39	\$46.99
	15	TOTAL VOTES		3	1	2	0

**Proposition 218 Assessment Ballot Tabulation for  
Sherman Way and Ranchito Avenue (Re-Ballot) Lighting District**

**Election # 2313**

**Final Public Hearing January 16, 2007**

**Council File# 04-1874**

<b>Voting/Ballot Summary</b>				
<b>Vote</b>	<b>Weighted Total</b>	<b>Assessment of Votes Cast</b>	<b>Percent</b>	<b>Number of Ballots</b>
Yes	\$16.39		25.86%	1
No	\$46.99		74.14%	2
No Vote				0
Challenged				0

<b>Assessment District Summary</b>			
	<b>Total</b>	<b>Voted</b>	<b>Percent</b>
Parcels	15	3	20%
Assessment	\$260.06	\$63.38	24%



**DEPARTMENT OF PUBLIC WORKS  
BUREAU OF STREET LIGHTING**

DATE JUN 22 2006

C.D. 2

Honorable City Council  
of the City of Los Angeles

**SHERMAN WAY AND RANCHITO AVENUE (RE-BALLOT)  
STREET LIGHTING MAINTENANCE ASSESSMENT DISTRICT**

---

This report submits the proposed Ordinance of Intention to institute maintenance assessment proceedings for the above street lighting project.

**RECOMMENDATIONS**

1. Council adopt this report and the Ordinance of Intention, and that the proceedings be conducted in accordance with Sections 6.95 - 6.127 of the Los Angeles Administrative Code, Section 53753 of the California Government Code, and Proposition 218 (Articles XIII C and XIII D of the California Constitution). This includes Council holding a Public Hearing for the proposed district.
2. Upon Council adoption of the Ordinance of Intention, the Bureau of Street Lighting be instructed to: Mail notices of the assessment ballot proceedings, and Mail assessment ballots (as required by Prop. 218) to the property owners in the lighting district.
3. Upon completion of Item 2 above, the City Clerk be instructed to conduct the assessment ballot proceedings (i.e. count, certify, and report the results of the assessment ballot proceedings to the Council)
4. Following the conclusion of the final public hearing, if a project has weighted "YES" votes equal to, or in excess of weighted "NO" votes, the Council shall deny the appeals, confirm the maintenance assessments, and adopt the Final Ordinance levying the assessments. If the weighted "NO" votes are in excess of weighted "YES" votes, Council will abandon the lighting district and proceedings in accordance with Proposition 218; and the affected street lighting system shall be removed from service or not be constructed.
5. A copy of this report be provided to each affected Council office and the Mayor's Office of Economic Development.

RECEIVED  
CITY CLERK'S OFFICE

2006 JUN 22 PM 12: 11

CITY CLERK  
BY \_\_\_\_\_ DEPUTY

The passage of Proposition 218 on November 5, 1996, requires a vote of the property owners prior to Council confirming and levying the assessments for maintenance. Upon adoption of the transmitted Ordinance of Intention, the Council shall set a date for hearing appeals and the last day to receive completed assessment ballots. A hearing to be held by the Board of Public Works will be scheduled at least one week prior to the date of the public hearing for the City Council to review and resolve any appeals concerning the proposed maintenance assessments. If the assessment ballot proceeding as required by Proposition 218 approves these assessments, the City Council may confirm and levy the assessments. If levied, the administration of this district may be combined with that of another district or districts in the future as provided in the Ordinance of Intention. Protests that are received, as described in the Administrative Code, are for the consideration of the Council, but are not binding. Only a weighted majority vote against the assessment is binding.

In accordance with Council Policy adopted on December 11, 1998, the Bureau of Street Lighting will cast ballots in favor of the assessments for all Council controlled public properties in the district.

**SUMMARY**

TOTAL STREETLIGHTS: 1  
 AFFECTED PARCELS: 15  
 TOTAL ASSESSMENTS: \$260.06  
 TAX YEAR: 2006/2007  
 PRIVATE DEVELOPMENT PROJECT

*ORD of Int*  
**ADOPTED**  
 MOTION ADOPTED TO APPROVE COMMUNICATION RECOMMENDATIONS  
 SEP 20 2006

**LOS ANGELES CITY COUNCIL**  
 SET FOR HEARING *NOV. 22, 2006*

*NOV 22 2006 - Public Hearing held - Hearing continued and Ordinance to be presented on Dec. 15, 2006*

*DEC 15 2006 - CONTINUED TO JANUARY 16, 2007*

*JAN 16 2007 - Continued to February 6, 2007*

**TRANSMITTALS**

1. Ordinance of Intention, approved as to form and legality by the City Attorney, for the proposed assessment district.
2. Diagram delineating those lands proposed to be assessed.
3. Proposed assessment roll.
4. Engineer's report as required by Proposition 218.

*Abandoning ORD*  
**ADOPTED**  
 FEB 06 2007

**LOS ANGELES CITY COUNCIL**

Respectfully submitted,

Report prepared by:  
 Community Services Division  
 Prop. 218 Compliance Section  
 Shan Yu, St. Lighting Assoc. II  
 Jay Wong, P.E., St. Lighting Assoc. III  
 Orlando Nova, P.E., Division Manager  
 (213) 847-6406

*Ed Ebrahimian for*  
 Ed Ebrahimian, Director  
 Bureau of Street Lighting

COUNCIL VOTE

Feb 6, 2007 10:14:36 AM, #2

ITEM NO. (1)

Voting on Item(s): 1,2,3,4,5,6

Roll Call

CARDENAS	Absent
GREUEL	Yes
HAHN	Yes
HUIZAR	Absent
LABONGE	Yes
VACANT	Absent
PARKS	Yes
PERRY	Yes
REYES	Yes
ROSENDAHL	Yes
SMITH	Yes
WEISS	Yes
WESSON	Yes
ZINE	Yes
*GARCETTI	Yes

Present: 12, Yes: 12 No: 0

*ORD ADOPTED*

COUNCIL VOTE

Sep 20, 2006 10:22:49 AM, #4

Items for Which Public Hearings Have Not Been Held - Items 42-86  
Voting on Item(s): 43-61,64-68,71-77,79-83,85  
Roll Call

CARDENAS	Yes
GREUEL	Yes
HAHN	Yes
HUIZAR	Yes
LABONGE	Absent
PADILLA	Yes
PARKS	Yes
PERRY	Yes
REYES	Yes
ROSENDAHL	Yes
SMITH	Absent
WEISS	Yes
WESSON	Yes
ZINE	Yes
*GARCETTI	Yes

Present: 13, Yes: 13 No: 0

6  
**BOARD OF PUBLIC WORKS  
MEMBERS**

**CYNTHIA M. RUIZ**  
PRESIDENT

**DAVID SICKLER**  
VICE PRESIDENT

**PAULA A. DANIELS**  
PRESIDENT PRO-TEMPORE

**YOLANDA FUENTES**  
COMMISSIONER

**VALERIE LYNNE SHAW**  
COMMISSIONER

**CITY OF LOS ANGELES**  
CALIFORNIA



**ANTONIO R. VILLARAIGOSA**  
MAYOR

November 13, 2006

**OFFICE OF THE  
BOARD OF PUBLIC WORKS**  
200 N. Spring St., Rm. 355, City Hall  
LOS ANGELES, CA 90012

JAMES A. GIBSON  
EXECUTIVE OFFICER

GENERAL INFORMATION  
(213) 978-0261  
FAX: (213) 978-0278  
TDD: (213) 978-2310

**Council Hearing: 11/22/06**

City Council  
Room 395, CH

Honorable Members:

Inasmuch as no one protested the assessments pursuant to the hearing scheduled this date in connection with the maintenance of Sherman Way and Ranchito Avenue (Reballot) Lighting District, the Board of Public Works recommends that the assessments therefore be confirmed.

Respectfully submitted,

James A. Gibson  
Executive Officer  
Board of Public Works

JAG:cg

cc: Chairperson Public Works Committee  
Director, Bureau of Street Lighting  
City Engineer



CITY OF LOS ANGELES  
CALIFORNIA



ANTONIO R. VILLARAIGOSA  
MAYOR

FRANK T. MARTINEZ  
City Clerk

KAREN E. KALFAYAN  
Executive Officer

When making inquiries  
relative to this matter  
refer to File No.

Office of the  
CITY CLERK  
Council and Public Services  
Room 395, City Hall  
Los Angeles, CA 90012  
Council File Information - (213) 978-1043  
General Information - (213) 978-1133  
Fax: (213) 978-1040

CLAUDIA M. DUNN  
Chief, Council and Public Services Division  
[www.cityclerk.lacity.org](http://www.cityclerk.lacity.org)

04-1874

CD 2

October 17, 2006

Bureau of Engineering  
Bureau of Street Lighting  
Board of Public Works  
Councilmember Greuel

Controller, Room 300  
Accounting Division, F&A  
Disbursement Division  
City Attorney  
Chief Legislative Analyst

RE: ESTABLISHING A HEARING DATE OF **NOVEMBER 22, 2006** FOR THE MAINTENANCE OF  
SHERMAN WAY AND RANCHITO AVENUE (REBALLOT) LIGHTING DISTRICT

At the meeting of the Council held SEPTEMBER 20, 2006, the following  
action was taken:

Motion adopted to approve Bureau of Street Lighting report.....	_____
Attached report adopted .....	_____
Attached resolution ( - ) adopted.....	_____
Mayor concurred.....	_____
FORTHWITH.....	_____
Ordinance adopted.....	_____
Ordinance of Intention adopted.....	X
Ordinance number.....	177894
Effective date.....	10-23-06
Posted date.....	10-13-06
Mayor approved.....	10-6-06
Set for Hearing.....	11-22-06
Motion adopted to approve communication recommendation(s).....	X

City Clerk  
kw



RECEIVED  
 MAYOR'S OFFICE  
 City Clerk's Time Stamp  
 2006 SEP 27 AM 9:08  
 CITY OF LOS ANGELES

TIME LIMIT FILES  
 ORDINANCES

RECEIVED  
 CITY CLERK'S OFFICE  
 City Clerk's Time Stamp  
 2006 SEP 27 AM 8:58  
 CITY CLERK  
 BY \_\_\_\_\_ DEPUTY

COUNCIL FILE NUMBER 04-1874 COUNCIL DISTRICT 2 **OCT 10 2006**

COUNCIL APPROVAL DATE SEPTEMBER 20, 2006 LAST DAY FOR MAYOR TO ACT \_\_\_\_\_

ORDINANCE TYPE:  Ord of Intent  Zoning  Personnel  General  
 Improvement  LAMC  LAAC  CU or Var Appeals - CPC No \_\_\_\_\_

SUBJECT MATTER: ESTABLISHING A HEARING DATE OF **NOVEMBER 22, 2006** FOR THE MAINTENANCE OF SHERMAN WAY AND RANCHITO AVENUE (REBALLOT) LIGHTING DISTRICT

	APPROVED	DISAPPROVED	BY
BOARD OF PUBLIC WORKS	<u>X</u>	_____	CITY CLERK DEPUTY
CITY ATTORNEY	<u>X</u>	_____	
BUREAU OF STREET LIGHTING	<u>X</u>	_____	
OTHER: _____	_____	_____	

RECEIVED  
 CITY CLERK'S OFFICE  
 2006 OCT 10 AM 10:42

DATE OF MAYOR APPROVAL, DEEMED APPROVED OR \*VETO: OCT 06 2006  
 \*VETOED ORDINANCES MUST BE ACCOMPANIED WITH OBJECTIONS IN WRITING PURSUANT TO CHARTER SEC. 250(b)(c)

(CITY CLERK USE ONLY PLEASE DO NOT WRITE BELOW THIS LINE)

DATE RECEIVED FROM MAYOR OCT 10 2006 ORDINANCE NO. 177894  
 DATE PUBLISHED \_\_\_\_\_ DATE POSTED OCT 13 2006 EFFECTIVE DATE OCT 23 2006

ORD OF INTENT: HEARING DATE \_\_\_\_\_ ASSESSMENT CONFIRMATION \_\_\_\_\_

ORDINANCE FOR DISTRIBUTION: Yes [] No []

*[Signature]*  
 OCT 13 2006  
 ST LIGHTS, NOT

ORDINANCE NO. 177894

An Ordinance pursuant to the provisions of Sections 6.95 - 6.127 of the Los Angeles Administrative Code, Section 53753 of the California Government Code, and Proposition 218 (Articles XIII C and XIII D of the California Constitution), declaring the intention of the Council of the City of Los Angeles to order the necessary street lighting systems to be operated, maintained, and repaired, including furnishing electric energy, for the current Fiscal Year of 2005-2006, for the lighting of that certain district designated as the:

**SHERMAN WAY AND RANCHITO AVENUE (RE-BALLOT) LIGHTINGDISTRICT**

**THE PEOPLE OF THE CITY OF LOS ANGELES DO ORDAIN AS FOLLOWS:**

Section 1. The public interest and convenience require, and it is the intention of the Council of the City of Los Angeles to order the following improvement to be made, to wit:

That the necessary street lighting equipment be operated, maintained and repaired and that electric energy be furnished for the current Fiscal Year of 2005-2006, for the lighting of:

**RANCHITO AVENUE,**

From Sherman Way to 220' N/O Sherman Way,

in the City of Los Angeles (see plan for details). The street or portions of streets to be improved, and the district to be assessed to pay the costs and expenses of the improvement, shall be known for all proceedings hereunder as:

**SHERMAN WAY AND RANCHITO AVENUE (RE-BALLOT) LIGHTING DISTRICT**

Section 2. All of the said work shall be done in accordance with the report of the Director of the Bureau of Street Lighting adopted by the Board of Public Works, therefore, approved by the City Council and on file in the office of the City Clerk. Reference to said report is hereby made for a full and detailed description of the proposed improvement and of the assessments to be levied.

Section 3. The said Council hereby makes all the costs and expenses of said improvement, including incidental expenses, chargeable upon the district to be benefited thereby, with no additional portion of the costs to be paid out of the City Treasury.

Section 4. The Council hereby determines and declares that the district which receives special benefit from said improvement, and is to be assessed to pay the costs and expenses thereof, is described by the diagram with City page numbers 12610 and accompanying assessment roll included by reference in the said report of the Director of the Bureau of Street Lighting adopted by the Board of Public Works, which diagram indicates by a boundary line the extent of the territory included within the assessment district. Reference is hereby made to said report and diagram for a full and complete description of said district, which diagram shall govern for all details as to the extent thereof. All public streets and alleys or portions thereof are hereby excepted there from.

Section 5. That the proceedings for the said improvement shall be had and taken under and in accordance with Sections 6.95 - 6.127 of the Los Angeles Administrative Code, Section 53753 of the California Government Code, and Proposition 218 (Articles XIII C and XIII D of the California Constitution).

Section 6. The Board of Public Works shall prepare notices and ballots of said improvement to be mailed by the City Clerk to each property owner affected by the assessment, and have the notices to be published in newspapers of general circulation published and distributed in the several areas of the City in the manner and form and within the time required by law.

Section 7. The City Clerk shall conduct an assessment ballot proceeding for this lighting district, as required by Proposition 218 (Article XIII D of the California Constitution). Ballots shall be mailed with the hearing notices. The Clerk shall count, certify, and report the results to the Council. The Council shall not impose the proposed assessment if the count of the weighted "no" votes is greater than the weighted "yes" votes, and the specified lighting system will not be installed. In tabulating the ballots, the ballots shall be weighted according to the proportional financial obligation of the affected property due to the improvement.

Section 8. The proposed street lighting maintenance assessments referenced herein are intended to be in addition to or in replacement of the existing assessment, as specified in the Engineer's Report. Where the proposed assessment is to be in addition to the existing assessment, whether the proposed assessment is levied or abandoned, the existing assessment shall not be affected. Where the proposed assessment is to be in replacement of the existing assessment, if the proposed assessment is not levied, the existing assessment shall not be affected.

Section 9. For each year following the first year of the assessment, the amounts of the assessments designated in the assessment roll may be increased annually, without further notice or ballot, by no more than the annual Consumer Price Index (CPI) for Los Angeles-Anaheim-Riverside CA, provided by the U.S. Dept. of Labor (Bureau of Labor Statistics). ). The annual Consumer Price Index (CPI) will be calculated from the calendar year (January 1-December 31) just prior to the assessment period affected (July 1-June 30).

Section 10. The administration of this district may be combined, without further notice or ballot, with the administration of any other district or districts, for which authority for such administrative combination is provided in the establishing ordinance. Such combined districts, for all administrative purposes including but not limited to, assessment, diagram, revenue and expenditures, notice and balloting, may be treated as a single district.

Section 11. Notwithstanding that the assessments specified in the assessment roll are imposed for the 2005/06 fiscal year, only if the street lighting system is energized on or before July 1, 2006 shall those assessments be transferred to the 2005/06 property tax rolls and collected. If the system is not energized on or before that date, the assessments approved herein, may be levied in the fiscal year following the year in which the system is energized, without further notice or ballot.

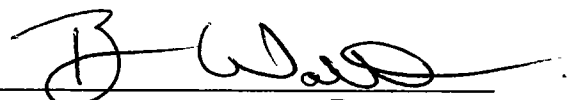
Section 12. That NOV 2 2 2006 at the hour of 10 o'clock a.m. is the time, and the Council Chamber on the third floor in City Hall the City of Los Angeles is the place, when and where a public hearing on the proposed improvement and assessment will be held by the City Council. Any person objecting to their assessment may file a written protest or appeal with the City Clerk at any time prior to the hearing by the City Council. Any person may also present written or oral comments at the City Council hearing on this matter. Such protest must contain a description of the property in which each signer thereof owns an interest, sufficient to identify the property, and be delivered to the City Clerk, and no other protests than those presented within the time specified will be considered.

Ballots are due to the City Clerk at any time prior to or on the day of the hearing by City Council. The City Clerk shall prepare a report of the assessment ballot proceeding results to the City Council.


Sec. 13. The City Clerk shall certify to the passage of this ordinance and have it published in accordance with Council policy, either in a daily newspaper circulated in the City of Los Angeles or by posting for ten days in three public places in the City of Los Angeles: one copy on the bulletin board located at the Main Street entrance to the Los Angeles City Hall; one copy on the bulletin board located at the Main Street entrance to the Los Angeles City Hall East; and one copy on the bulletin board located at the Temple Street entrance to the Los Angeles County Hall of Records.

I hereby certify that the foregoing ordinance was passed by the Council of the City of Los Angeles, at its meeting of SEP 20 2006.

FRANK T. MARTINEZ, City Clerk

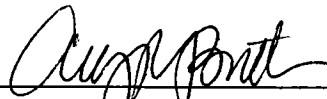
By   
Deputy

Approved \_\_\_\_\_

 OCT 06 2006  
Mayor

Approved as to Form and Legality

ROCKARD J. DELGADILLO, City Attorney

By   
Deputy City Attorney

Date: 10-12-05

File No. 04-1874

**DECLARATION OF POSTING ORDINANCE**


I, MARIA C. RICO, state as follows: I am, and was at all times hereinafter mentioned, a resident of the State of California, over the age of eighteen years, and a Deputy City Clerk of the City of Los Angeles, California.

Ordinance No. 177894 - Ordinance of Intention - Sherman Way and Ranchito Avenue (Re-Ballot) Lighting District - Hearing set 11/22/06 - a copy of which is hereto attached, was finally adopted by the Los Angeles City Council on September 20, 2006, and under the direction of said City Council and the City Clerk, pursuant to Section 251 of the Charter of the City of Los Angeles and Ordinance No. 172959, on October 13, 2006 I posted a true copy of said ordinance at each of three public places located in the City of Los Angeles, California, as follows: 1) one copy on the bulletin board located at the Main Street entrance to the Los Angeles City Hall; 2) one copy on the bulletin board located at the Main Street entrance to the Los Angeles City Hall East; 3) one copy on the bulletin board located at the Temple Street entrance to the Hall of Records of the County of Los Angeles.

Copies of said ordinance were posted conspicuously beginning on October 13, 2006 and will be continuously posted for ten or more days.

I declare under penalty of perjury that the foregoing is true and correct.

Signed this 13th day of October 2006 at Los Angeles, California.

  
\_\_\_\_\_  
Maria C. Rico, Deputy City Clerk

**Ordinance Effective Date:** October 23, 2006

**Council File No.** 04-1874

## SHERMAN WAY & RANCHITO AVE. (RE-BALLOT)

Ed Ebrahimian, Director  
 Bureau of Street Lighting  
 Attn: Prop. 218 Section  
 1149 S. Broadway, 2nd Flr.  
 Los Angeles CA 90015

**PROJ ID / Elect. No.:** 2313  
**COUNCIL FILE No.:** 04-1874  
**LOG No.:** 167  
**Engineer:** Shan Yu

Election Division  
 Attn: Katalina De Hoyos  
 Room 285, City Hall  
 Mail Stop 168

**Mailing Date:** 11/29/06  
**P.W. Hearing Date:** 11/13/06  
**Council Hearing Date:** 01/16/06

Calendar Section  
 Attn: Darlene Goya  
 3rd Floor, City Hall  
 Mail Stop 160

Councilmember Wendy Greuel  
 2nd District  
 Room 475, City Hall  
 Stop 202

City Assmt ID	APN	Owner name	Owner address	PROPOSED ASSESSMENT
1. 12610-001	2216-005-003	JULIO AND NORA LLERENA	13900 CANTLAY ST VAN NUYS, CA 91405	\$30.60
2. 12610-002	2216-005-029	MARITHZA A PADILLA	13903 SHERMAN WAY NO 1 VAN NUYS, CA 91405	\$16.39
3. 12610-002	2216-005-030	JOSE B JR AND FAUSTINA A DUMDUM	13903 SHERMAN WAY NO 2 VAN NUYS, CA 91405	\$16.39
4. 12610-002	2216-005-031	ROSA I CARRANZA	13903 SHERMAN WAY NO 3 VAN NUYS, CA 91405	\$16.39
5. 12610-002	2216-005-032	ADA Z AND ARRESEIGOR	13903 SHERMAN WAY NO 4 VAN NUYS, CA 91405	\$16.39
6. 12610-002	2216-005-033	BARSEG UNDJIAN	13903 SHERMAN WAY NO 5 VAN NUYS, CA 91405	\$16.39
7. 12610-002	2216-005-034	CELSO K AND AGNES P ROXAS	13903 SHERMAN WAY NO 6 VAN NUYS, CA 91405	\$16.39
8. 12610-002	2216-005-035	EDITHA M AND BRICCIO A MAGPANTAY	13903 SHERMAN WAY NO 7 VAN NUYS, CA 91405	\$16.39
9. 12610-002	2216-005-036	SIRARPI KECHEDZIAN	13903 SHERMAN WAY NO 9 VAN NUYS, CA 91405	\$16.39
10. 12610-002	2216-005-037	ANGELITA BRIONES	13903 SHERMAN WAY NO 8 VAN NUYS, CA 91405	\$16.39
11. 12610-002	2216-005-038	FELOMINA BUNI	13903 SHERMAN WAY NO 11 VAN NUYS, CA 91405	\$16.39
12. 12610-002	2216-005-039	MOHAMMED ABARGHOEI	16500 RINALDI ST GRANADA HILLS, CA 91344	\$16.39
13. 12610-002	2216-005-040	SALOMON CORTES	13903 SHERMAN WAY NO 14 VAN NUYS, CA 91405	\$16.39
14. 12610-002	2216-005-041	KARAPET AND ANAIT AVETISYAN	13903 SHERMAN WAY NO 12 VAN NUYS, CA 91405	\$16.39
15. 12610-002	2216-005-042	EDWIN AND NORMA MORATO	13903 SHERMAN WAY NO 15 VAN NUYS, CA 91405	\$16.39
<b>Total:</b>				<b>\$260.06</b>



# BALLOT

## Street Lighting Operation and Maintenance Assessment

### SHERMAN WAY & RANCHITO AVE. (RE-BALLOT)

Vote by marking one of the boxes below:

**YES**

I am in favor of the subject Street Lighting Maintenance District and the assessment. I understand that I will be assessed \$30.60 annually (*about \$2.55 per month*) only for their operation and maintenance.

**NO**

I am not in favor of the Street Lighting Maintenance District and the assessment. I understand that a majority NO vote will cause the streetlight(s) to be not to be installed; or if already installed, turned off and removed from service.

**VOTE HERE**

*I hereby declare, under penalty of perjury, that I am the record owner, or the authorized representative of the record owner, of the parcel identified in the Property Information Section below.*

**Property Owner** (1) **Name:** \_\_\_\_\_  
(please print)

**Or** (2) **Signature:** \_\_\_\_\_ (3) **Date:** \_\_\_\_\_

**Authorized Representative** (4) **Title:** \_\_\_\_\_  
(e.g. property owner, authorized representative, etc.)

~ Items (1) thru (4) above must be completed ~

## Instructions

Election No.: 2313  
City Assmt No.: 12610-001

In order for your ballot to count, all of these instructions must be followed:

1. Vote by marking one of the above boxes. Mark only one box.
2. Mark your ballot with blue or black ink. Do **not** use pencil.
3. Print your name, sign, date, and indicate your title above. (If more than one owner, only one owner needs to sign.)
4. Fold the ballot and mail this entire page in the enclosed envelope. Dotted lines on the back will help with folding.
5. Make sure the Los Angeles City Clerk address on the back of this page appears in the window of the return envelope.
6. DUE DATE - The ballot must be received by the Final Council Hearing Date as indicated on the enclosed NOTICE.

## Property and Assessment Information

- Address: 13900 CANTLAY ST
- Land Use Description: SFR
- Benefit Zone(s): 2
- You are currently paying \$0.00 annually for streetlight maintenance and operation.
- The fiscal year 2007-08 assessment amount will be \$30.60 (about \$2.55 per month). \*
- County Assessor's Parcel Number: 2216-005-003
- No. of Dwelling Units: 0
- Parcel Acreage: .1300

\*For each year following the first year of the assessment, the amounts of the assessments designated in the assessment roll may be increased annually, without further notice or ballot, by no more than the annual Consumer Price Index (CPI) for Los Angeles-Anaheim-Riverside CA, provided by the U.S. Dept. of Labor (Bureau of Labor Statistics). The annual Consumer Price Index (CPI) will be calculated from the calendar year (January 1-December 31) just prior to the assessment period affected (July 1-June 30).

**City of Los Angeles**  
**Department of Public Works**  
**Bureau of Street Lighting**

City Clerk ID# \_\_\_\_\_

**Please note any corrections in this area.**

COUNTY ASSESSOR NO. (APN):  
(Shown at the top of the address label)

PROPERTY OWNER NAME: \_\_\_\_\_

MAILING ADDRESS: \_\_\_\_\_

LAND USE: \_\_\_\_\_

DWELLING UNITS \_\_\_\_\_ PARCEL ACRES: \_\_\_\_\_

-----  
fold line

LOS ANGELES CITY CLERK, ELECTION DIV.  
**ATTN: 218 BALLOT ST. LTG. MNT. # 2313**  
200 N. SPRING STREET ROOM 285  
LOS ANGELES CA 90099-9716

-----  
fold line

**NOTICE TO PROPERTY OWNERS**  
FOR THE FORMATION OF THE CITY OF LOS ANGELES  
STREET LIGHTING MAINTENANCE DISTRICT

**SHERMAN WAY & RANCHITO AVE. (RE-BALLOT)**

***Ballots must be received by Tuesday, January 16, 2007***

**INSTRUCTIONS**

In order for your ballot to count, all of these instructions must be followed:

1. Vote by marking one of the above boxes. Mark only one box.
2. Mark your ballot with blue or black ink. Do **not** use pencil.
3. Print your name, sign, and date the ballot. (If more than one owner, only one owner needs to sign.)
4. Fold the ballot and mail this entire page in the enclosed envelope. Dotted lines on the back will help with folding.
5. Make sure the Los Angeles City Clerk address on the back of this page appears in the window of the return envelope.
6. DUE DATE - The ballot must be received by the Final Council Hearing Date ( Tuesday, January 16, 2007 ).

---

**I. NOTICE**

This notice informs you, as record owner of property within the proposed assessment district, which on 2-6-07 the Los Angeles City Council declared its intention to form a new Street Lighting Maintenance District, under Council File number 04-1874. All interested persons are invited to attend the public hearings and express opinions on the proposed assessment.

**Public Hearing:** To be held on Monday, November 13, 2006 at 9:30 AM, during a regular meeting of the Board of Public Works. Location: Third floor hearing Room 350, City Hall, 200 N. Spring Street. (Please note: the public entrance is on Main Street.)

**Final Council Public Hearing:** To be held on Tuesday, January 16, 2007 at 10:00 AM during a regular meeting of the Los Angeles City Council. Location: John Ferraro Council Chamber, Third floor, Room 340, City Hall, 200 N. Spring Street. (Please note: the public entrance is on Main Street.)

**Protest Procedure:** Protests presented for consideration of the Council are not binding, regardless of the number. The Council may accept or deny the protest(s) at its discretion. Any person may file a written protest or appeal with the City Clerk at any time prior to, or on the day of, the final public hearing by the City Council on this matter. Written protests shall specify the ground(s) upon which the protest is based, the name and mailing address of the person protesting, a description sufficient to identify the property for which the protest is being filed, the Council File number, and be mailed or delivered to the City Clerk, Room 395, Los Angeles City Hall, 200 N. Spring St., Los Angeles, CA 90012.

---

**II. ASSESSMENT INFORMATION**

The proposed Assessment described in this Notice is new and, if approved, will appear on your property tax bill. Proposition 218, the "Right to Vote on Taxes Act", was approved on the November 1996 statewide ballot, and added Article XIII D to the California Constitution. It requires that a parcel's assessment may not exceed the reasonable cost for the proportional special benefit conferred on that parcel. Article XIII D provides that only special benefits are assessable and the City must separate the general benefits from the special benefits. It also requires that publicly owned properties, which benefit from the improvements, be assessed.

1. **Description of District:** See enclosed map
2. **Your Proposed Annual Assessment:** The proposed Assessment on your property for Fiscal Year (FY) 2007-08 is shown on the enclosed yellow ballot. (Fiscal Year is from July 1 to June 30). For each year following the first year of the assessment, the amounts of the assessments designated in the assessment roll may be increased annually, without further notice or ballot, by no more than the annual Consumer Price Index (CPI) for Los Angeles Anaheim Riverside CA, provided by the U.S. Dept. of Labor (Bureau of Labor Statistics). The annual Consumer Price Index (CPI) will be calculated from the calendar year (January 1- December 31) just prior to the assessment period affected (July 1- June 30).
3. **Entire District Proposed Annual Assessment:** The proposed annual assessment for the entire district for FY 2007-08 is \$260.06.
4. **Duration of the Proposed Assessment:** Annually on tax bills.

5. **Reason for the Assessment:** To pay for the costs of operating, servicing and maintaining local street lighting. These costs include, but are not limited to electricity, lamps, fixtures, poles, wires, repair crews and vehicles and other items necessary to operate the streetlights in the City of Los Angeles.
6. **Calculation of the Assessment:** The process of determining maintenance assessments for each parcel is based on evaluating three areas relative to the amount of special benefit received. These include the size of the property, the land use, and the type of street lighting system(s) benefiting the property. These factors are evaluated for your property and used in the following equation to determine your annual assessment rate:

$$\text{Assessment Cost} = (\text{Equivalent Dwelling Units}) \times (\text{Benefit Zone Rate}) \times (\text{Adjustment Factor})$$

The calculation methodology relates all land uses, and their respective lot sizes, to the medium density single-family residential (SFR) land use. The determination of the EDU takes into account two factors in relation to a SFR: land use, and the lot size.

Benefit Zones are used to differentiate between the different types of lighting services each parcel receives. These zones indicate the type of lighting system used (i.e. ornamental, modern, pedestrian, etc.), as well as the location where the lighting system will be installed (i.e. arterial, residential, etc.) Each benefit zone will have a specific assessment rate associated with it. The rates associated with these zones have been set in accordance to the Bureau's current maintenance district. These rates include costs for energy, maintenance, administration and eventual replacement. The assessment each parcel receives will be relative to the proportioned benefit received from each benefit zone. Parcel receiving benefit from multiple lighting systems, may be included in multiple benefit zones relative to the proportioned benefit.

Adjustment factors include benefit factors, partial lighting factors, and lot shape factors. Benefit Factors will define the benefit associated with the use of the property. Partial lighting factors will define the proportion of lighting benefit received by the affected properties. Lot shape factors will provide adjustments for odd shaped lots where the available benefiting frontage is disproportionate to the relative amount of lighting benefit received (e.g. flag-lots, corner lots, etc.). For more detailed information regarding assessment calculations, please visit us at: <http://www.lacity.org/bsl>.

7. **Balloting Results:**

If a majority of the ballots returned are in support of the Assessment District, the District will be formed and the Assessment in the amount listed on the enclosed ballot will be imposed. If a majority of the ballots returned are in opposition to the Assessment District, the Assessment will not be imposed and the proposed streetlights will not be installed; if already installed, the streetlights will be removed from service. Ballots are weighted proportionally by each parcel's Assessment amount. (\$1 = 1 vote.)

---

### III. QUESTIONS REGARDING THESE PROCEEDINGS

If you have any questions about the proposed assessment district or this process, please contact our staff at the City of Los Angeles:

Telephone: (213) 847-1500  
(Monday through Friday, 8:00 a.m. – 5:00 p.m.)

Email: [BSLProp218@lacity.org](mailto:BSLProp218@lacity.org)

Internet: <http://www.lacity.org/bsl>

---

The actual assessments levied in any fiscal year will be as approved by the City Council and may not exceed the maximum assessment rate without receiving property owner approval for increase. The actual annual assessment rates for each Zone will be calculated each year based on the estimated costs of operating and maintaining the street lighting system in the following fiscal year. **The funding source to repair and maintain the City of Los Angeles' general benefit lights are not included in the estimated annual budget.**

As a covered entity under Title II of the Americans with Disabilities Act, the City of Los Angeles does not discriminate on the basis of disability and upon request will provide reasonable accommodation to ensure equal access to its programs, services and activities.

Light not yet installed.

# STREET LIGHTING BALLOT DON'T THROW AWAY

This package contains a ballot to determine if streetlights will be installed adjacent to your property.

In order to install streetlights near your property, an Assessment District must be created to collect the annual cost from adjacent property owners to operate and maintain the lights. This is your opportunity to vote on whether you want to have streetlights and accept the charge added to your property taxes to pay these costs.

In this packet you will find a blue Notice, a yellow Ballot, and an envelope for mailing the ballot.

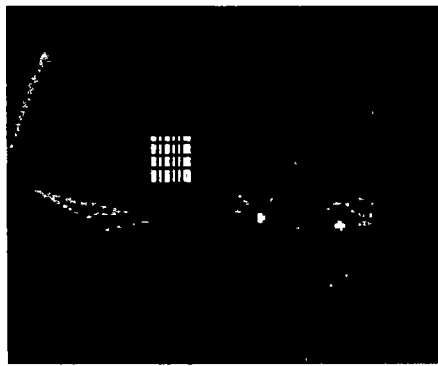
**Street Lighting Operation and Maintenance Ballot**

This ballot is the most important document in this material!  
It shows the proposed assessment amount for your property.  
Ballots that are not returned, or that are returned late, cannot be counted.

**Please return your ballot!**

**Notice to Property Owners**

This Notice provides you with legally required information about the balloting and the assessment. On the back, it explains how your assessment is calculated.



City of Los Angeles  
Dept. of Public Works  
Bureau of Street Lighting



✓ A majority **YES** vote will permit the City to install streetlights near your property.

✓ A majority **NO** vote will not allow the City to install streetlights adjacent to your property.

Questions? Problems paying?  
Call 213 485-8213 or visit the Bureau of Street Lighting website.  
<http://www.lacity.org/BSL/index.htm>

As a covered entity under Title II of the Americans with Disabilities Act, the City of Los Angeles does not discriminate on the basis of disability and upon request will provide reasonable accommodation to ensure equal access to its programs, services and activities.

# BALOTA DE ALUMBRADO PÚBLICO FAVOR DE NO TIRAR A LA BASURA

Este paquete contiene una balota para determinar si un sistema de alumbrado público será instalado adyacente a su propiedad.

Para instalar un sistema de alumbrado público cerca de su propiedad, un distrito de valoración debe ser creado para colectar anualmente de los propietarios la cantidad para la operación y mantenimiento del alumbrado. Esta es su oportunidad para votar si desea que el alumbrado se mantenga encendido y aceptar que los cargos se agregen a los impuestos de su propiedad.

En este paquete usted encontrará un aviso color azul, una balota amarilla, y un sobre para enviar la balota.

## Balota para la Operación y Mantenimiento del Alumbrado Público

Esta balota es el documento más importante dentro de este material.  
La balota muestra la propuesta cantidad de tasación sobre su propiedad.  
Balotas no regresadas o regresadas tarde, no pueden ser contadas.

**¡Favor de Regresar la Balota!**

## Aviso Para Propietarios

Este aviso suministra información sobre la votación y tasación requerida por la ley. Al reverso, le explica cómo su tasación es calculada.



✓ Una mayoría de votos "SI", permitirá a la Ciudad instalar alumbrado público cerca de su propiedad.



✓ Una mayoría de votos "NO", no requerirá a la Ciudad instalar alumbrado público adyacente a su propiedad.

Ciudad de los Angeles  
Departamento de Obras Públicas  
Buró de Alumbrado Público

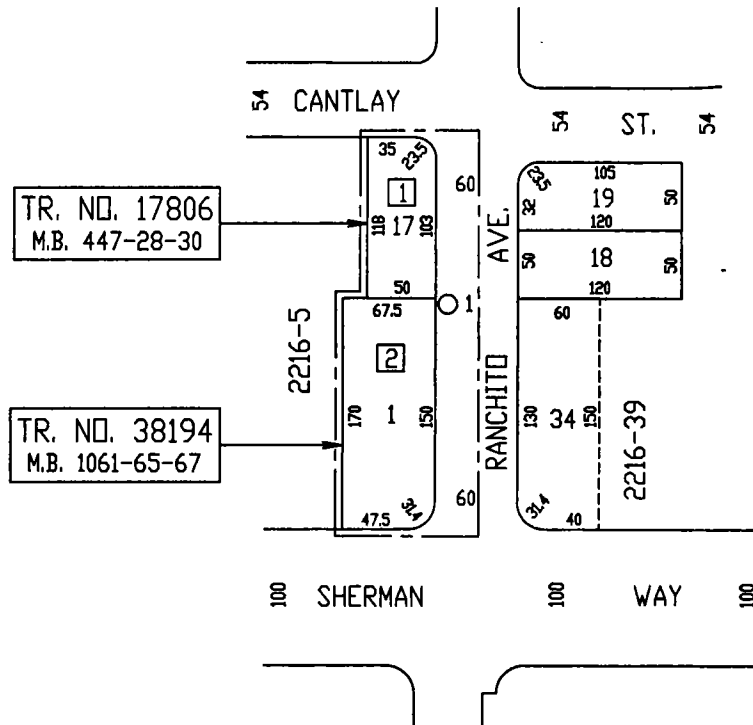


¿Preguntas? ¿No puede pagar?  
Llame al 213 485-8213 o visite  
la página de internet del Buró de  
Alumbrado público:  
<http://www.lacity.org/BSL/index.html>

# AREA MAP



NOT TO SCALE



### LEGEND:

- MAINTENANCE DISTRICT BOUNDARY
- NEW STREETLIGHT
- EXISTING STREETLIGHT
- # CITY ASSESSMENT NUMBER

## SHERMAN WAY & RANCHITO AVE. (RE-BALLOT) L.D.

PREPARED BY BUREAU OF STREET LIGHTING

Plan No. D-28525  
 Post No. 1  
 Council Dist. 2  
 Election No. 2313  
 Page No. 12610  
 Date: 11-28-2006

43

# ORDINANCE OF INTENTION

04-1874  
CD 2

COMMUNICATION FROM THE BUREAU OF STREET LIGHTING and ORDINANCE OF INTENTION FIRST CONSIDERATION relative to establishing a hearing date for the maintenance of SHERMAN WAY AND RANCHITO AVENUE (REBALLOT) LIGHTING DISTRICT.

Recommendations for Council action, SUBJECT TO THE APPROVAL OF THE MAYOR:

1. ADOPT the report of the Director, Bureau of Street Lighting, dated June 22, 2006.
2. PRESENT and ADOPT the accompanying ORDINANCE OF INTENTION setting the date of **NOVEMBER 22, 2006** as the hearing date for the maintenance of Sherman Way and Ranchito Avenue (Reballot) Lighting District, in accordance with Proposition 218, Articles XIIC and XIID of the California Constitution and Government Code Section 53753.

Fiscal Impact Statement: The Bureau of Street Lighting reports that if adopted, \$260.06 will be collected annually starting with tax year 2006-07 that will go into a dedicated street lighting maintenance assessment account for the use in the operation and maintenance of this street lighting system.

(Board of Public Works Hearing Date: November 13, 2006)

(ord of intent in Ccl. on 9-20-06)

cc: City Engineer  
Bureau of Street Lighting  
Chief Clerk, City Clerk  
Councilmember Greuel

**ADOPTED**

SEP 20 2006

**LOS ANGELES CITY COUNCIL**



**ORDINANCE NO. \_\_\_\_\_**

An Ordinance pursuant to the provisions of Sections 6.95 - 6.127 of the Los Angeles Administrative Code, Section 53753 of the California Government Code, and Proposition 218 (Articles XIII C and XIII D of the California Constitution), declaring the intention of the Council of the City of Los Angeles to order the necessary street lighting systems to be operated, maintained, and repaired, including furnishing electric energy, for the current Fiscal Year of 2005-2006, for the lighting of that certain district designated as the:

**SHERMAN WAY AND RANCHITO AVENUE (RE-BALLOT) LIGHTING DISTRICT**

**THE PEOPLE OF THE CITY OF LOS ANGELES DO ORDAIN AS FOLLOWS:**

Section 1. The public interest and convenience require, and it is the intention of the Council of the City of Los Angeles to order the following improvement to be made, to wit:

That the necessary street lighting equipment be operated, maintained and repaired and that electric energy be furnished for the current Fiscal Year of 2005-2006, for the lighting of:

**RANCHITO AVENUE,**

From Sherman Way to 220' N/O Sherman Way,

in the City of Los Angeles (see plan for details). The street or portions of streets to be improved, and the district to be assessed to pay the costs and expenses of the improvement, shall be known for all proceedings hereunder as:

**SHERMAN WAY AND RANCHITO AVENUE (RE-BALLOT) LIGHTING DISTRICT**

Section 2. All of the said work shall be done in accordance with the report of the Director of the Bureau of Street Lighting adopted by the Board of Public Works, therefore, approved by the City Council and on file in the office of the City Clerk. Reference to said report is hereby made for a full and detailed description of the proposed improvement and of the assessments to be levied.

Section 3. The said Council hereby makes all the costs and expenses of said improvement, including incidental expenses, chargeable upon the district to be benefited thereby, with no additional portion of the costs to be paid out of the City Treasury.

Section 4. The Council hereby determines and declares that the district which receives special benefit from said improvement, and is to be assessed to pay the costs and expenses thereof, is described by the diagram with City page numbers 12610 and accompanying assessment roll included by reference in the said report of the Director of the Bureau of Street Lighting adopted by the Board of Public Works, which diagram indicates by a boundary line the extent of the territory included within the assessment district. Reference is hereby made to said report and diagram for a full and complete description of said district, which diagram shall govern for all details as to the extent thereof. All public streets and alleys or portions thereof are hereby excepted there from.

Section 5. That the proceedings for the said improvement shall be had and taken under and in accordance with Sections 6.95 - 6.127 of the Los Angeles Administrative Code, Section 53753 of the California Government Code, and Proposition 218 (Articles XIII C and XIII D of the California Constitution).

Section 6. The Board of Public Works shall prepare notices and ballots of said improvement to be mailed by the City Clerk to each property owner affected by the assessment, and have the notices to be published in newspapers of general circulation published and distributed in the several areas of the City in the manner and form and within the time required by law.

Section 7. The City Clerk shall conduct an assessment ballot proceeding for this lighting district, as required by Proposition 218 (Article XIII D of the California Constitution). Ballots shall be mailed with the hearing notices. The Clerk shall count, certify, and report the results to the Council. The Council shall not impose the proposed assessment if the count of the weighted "no" votes is greater than the weighted "yes" votes, and the specified lighting system will not be installed. In tabulating the ballots, the ballots shall be weighted according to the proportional financial obligation of the affected property due to the improvement.

Section 8. The proposed street lighting maintenance assessments referenced herein are intended to be in addition to or in replacement of the existing assessment, as specified in the Engineer's Report. Where the proposed assessment is to be in addition to the existing assessment, whether the proposed assessment is levied or abandoned, the existing assessment shall not be affected. Where the proposed assessment is to be in replacement of the existing assessment, if the proposed assessment is not levied, the existing assessment shall not be affected.

Section 9. For each year following the first year of the assessment, the amounts of the assessments designated in the assessment roll may be increased annually, without further notice or ballot, by no more than the annual Consumer Price Index (CPI) for Los Angeles-Anaheim-Riverside CA, provided by the U.S. Dept. of Labor (Bureau of Labor Statistics). ). The annual Consumer Price Index (CPI) will be calculated from the calendar year (January 1-December 31) just prior to the assessment period affected (July 1-June 30).

Section 10. The administration of this district may be combined, without further notice or ballot, with the administration of any other district or districts, for which authority for such administrative combination is provided in the establishing ordinance. Such combined districts, for all administrative purposes including but not limited to, assessment, diagram, revenue and expenditures, notice and balloting, may be treated as a single district.

Section 11. Notwithstanding that the assessments specified in the assessment roll are imposed for the 2005/06 fiscal year, only if the street lighting system is energized on or before July 1, 2006 shall those assessments be transferred to the 2005/06 property tax rolls and collected. If the system is not energized on or before that date, the assessments approved herein, may be levied in the fiscal year following the year in which the system is energized, without further notice or ballot.

Section 12. That \_\_\_\_\_ at the hour of 10 o'clock a.m. is the time, and the Council Chamber on the third floor in City Hall the City of Los Angeles is the place, when and where a public hearing on the proposed improvement and assessment will be held by the City Council. Any person objecting to their assessment may file a written protest or appeal with the City Clerk at any time prior to the hearing by the City Council. Any person may also present written or oral comments at the City Council hearing on this matter. Such protest must contain a description of the property in which each signer thereof owns an interest, sufficient to identify the property, and be delivered to the City Clerk, and no other protests than those presented within the time specified will be considered.

Ballots are due to the City Clerk at any time prior to or on the day of the hearing by City Council. The City Clerk shall prepare a report of the assessment ballot proceeding results to the City Council.

Section 13. The City Clerk shall certify to the passage of this ordinance and have it published in accordance with Council policy, either in a daily newspaper circulated in the City of Los Angeles or by posting for ten days in three public places in the City of Los Angeles: one copy on the bulletin board located in the Main Street lobby to the City Hall; one copy on the bulletin board located in the Main Street entrance to Los Angeles City Hall East; and one copy on the bulletin board located at the Temple Street entrance to the Los Angeles County Hall of Records.

I hereby certify that the foregoing ordinance was passed by the Council of the City of Los Angeles, at its meeting of \_\_\_\_\_.

FRANK T. MARTINEZ, City Clerk

By \_\_\_\_\_  
Deputy

Approved \_\_\_\_\_

\_\_\_\_\_  
Mayor

Approved as to Form and Legality

ROCKARD J. DELGADILLO, City Attorney

By *August Pont*  
*Deputy* City Attorney

Date: *10-12-05*

File No. \_\_\_\_\_



# PROPOSED LIGHTING MAINTENANCE ASSESSMENT ROLL

## Design

DESCRIPTION OF PROPERTY "ASSESSMENT NUMBER"		LAND USE	ACREAGE	BENEFIT ZONE	ANNUAL ASSESSMENT	COUNTY REFERENCE		
						MAP	PAGE	PARCEL
That certain parcel of land numbered in red ink on assessment diagram or assessment as filed in Book No	Book 22 at page 0610 as " 001 "	SFR	0.13	2	\$30.60	2216-005-003		
That certain parcel of land numbered in red ink on assessment diagram or assessment as filed in Book No	Book 22 at page 0610 as " 002 "	CDO	0.25	2	\$16.39	2216-005-029		
That certain parcel of land numbered in red ink on assessment diagram or assessment as filed in Book No	Book 22 at page 0610 as " 002 "	CDO	0.25	2	\$16.39	2216-005-030		
That certain parcel of land numbered in red ink on assessment diagram or assessment as filed in Book No	Book 22 at page 0610 as " 002 "	CDO	0.25	2	\$16.39	2216-005-031		
That certain parcel of land numbered in red ink on assessment diagram or assessment as filed in Book No	Book 22 at page 0610 as " 002 "	CDO	0.25	2	\$16.39	2216-005-032		
That certain parcel of land numbered in red ink on assessment diagram or assessment as filed in Book No	Book 22 at page 0610 as " 002 "	CDO	0.25	2	\$16.39	2216-005-033		
That certain parcel of land numbered in red ink on assessment diagram or assessment as filed in Book No	Book 22 at page 0610 as " 002 "	CDO	0.25	2	\$16.39	2216-005-034		
That certain parcel of land numbered in red ink on assessment diagram or assessment as filed in Book No	Book 22 at page 0610 as " 002 "	CDO	0.25	2	\$16.39	2216-005-035		
That certain parcel of land numbered in red ink on assessment diagram or assessment as filed in Book No.	Book 22 at page 0610 as " 002 "	CDO	0.25	2	\$16.39	2216-005-036		
That certain parcel of land numbered in red ink on assessment diagram or assessment as filed in Book No	Book 22 at page 0610 as " 002 "	CDO	0.25	2	\$16.39	2216-005-037		
That certain parcel of land numbered in red ink on assessment diagram or assessment as filed in Book No	Book 22 at page 0610 as " 002 "	CDO	0.25	2	\$16.39	2216-005-038		
That certain parcel of land numbered in red ink on assessment diagram or assessment as filed in Book No	Book 22 at page 0610 as " 002 "	CDO	0.25	2	\$16.39	2216-005-039		
That certain parcel of land numbered in red ink on assessment diagram or assessment as filed in Book No	Book 22 at page 0610 as " 002 "	CDO	0.25	2	\$16.39	2216-005-040		
That certain parcel of land numbered in red ink on assessment diagram or assessment as filed in Book No	Book 22 at page 0610 as " 002 "	CDO	0.25	2	\$16.39	2216-005-041		
That certain parcel of land numbered in red ink on assessment diagram or assessment as filed in Book No	Book 22 at page 0610 as " 002 "	CDO	0.25	2	\$16.39	2216-005-042		
					<b>** DISTRICT ** ASSESSMENT =</b>	<b>\$260.06</b>		
<b>SHERMAN WAY &amp; RANCHITO AVE. (RE-BALLOT)</b>								

**ENGINEER'S REPORT**  
**FOR THE**  
**CITY OF LOS ANGELES**  
**BUREAU OF STREET LIGHTING**



REGARDING STREET LIGHTING MAINTENANCE ASSESSMENTS IN THE

**SHERMAN WAY AND RANCHITO AVE (RE-BALLOT)**  
**LIGHTING DISTRICT**

IN CONFORMANCE WITH PROPOSITION 218

PREPARED **June 12, 2006**

Transmittal No. 4 to the Report of the Board of Public Works

**CITY OF LOS ANGELES  
BUREAU OF STREET LIGHTING**

**ENGINEER'S REPORT**

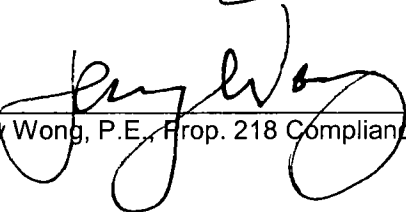
**Subject:** Description of how the City finances the cost of street lighting operation and maintenance, how these assessments were calculated, and how this complies with Section 4 of Proposition 218, Article XIII D of the California Constitution, in regards to the subject street lighting maintenance assessment district(s).

**Abstract:** The Bureau of Street Lighting, for the Board of Public Works, administers and operates the street lighting system of the City. This includes managing the financing of the system. By Council Policy, about 80% of the streetlights are financed through street lighting maintenance assessments to benefiting properties, and the rest through the LADWP.

Proposition 218, section 4 (b), requires that "...All assessments shall be supported by a detailed engineer's report prepared by a registered professional engineer certified by the State of California..." It further requires in section 4 (f) that "...in any legal action contesting the validity of any assessment, the burden shall be on the agency to demonstrate that the property or properties in question receive a special benefit over and above the benefits conferred on the public at large and that the amount of any contested assessment is proportional to, and no greater than, the benefits conferred on the property or properties in question..."

The purpose of this report is to respond to the specific requirements of Proposition 218 and State law, for the subject street lighting maintenance assessment district(s).

**Prepared by:**   
Shan Yu, Prop. 218 Compliance Section Associate II

**Checked by:**   
Jay Wong, P.E., Prop. 218 Compliance Section Associate III

**Approved by:** Orlando Nova, P.E., Division Manager, Bureau of Street Lighting



R.E. NO. E15598

Date 6/16/06



## CONTENTS

<u>ITEM</u>	<u>PAGE</u>
Summary	3
Street Lighting Types and Financing	3
How Street Lighting Maintenance Assessments are Calculated	4
Equivalent Dwelling Unit Rates	5
Benefit Zones (assessment Rates)	7
Adjustment Factors	8
Specifications For The Operation of Street Lighting Maintenance Assessment District(s)	10
Data Entry Sheet(s)	11

### Refer to the Report of the Board of Public Works For The Following Transmittals

1. Ordinance(s) of Intention for the Proposed Assessment District(s)
2. Assessment Diagram(s) for the Proposed Assessment District(s)
3. Assessment Roll(s) for the Proposed Assessment District(s)

## SUMMARY

This engineer's report will explain the methodology for the calculation of the street lighting operation and maintenance assessments, the City's policy between special and general benefit and information about the subject project.

## STREET LIGHTING TYPES AND FINANCING

There are three types of street lighting in the City of Los Angeles, each with different purposes, physical characteristics and financing modes. The following is a brief description of each:

- A. SPECIAL BENEFIT** is the direct street lighting benefit to a property, and to its owner or users, based on the existence of the nearby street lighting systems that is designed to illuminate the roadway and sidewalk adjacent to the specific property at night. When there is a single streetlight in front of or near the property in question, there is special benefit to the extent that the roadway and sidewalk are illuminated, notwithstanding that the street lighting system for the block is incomplete. Proposition 218 allows the assessment of properties which receive special benefit, to the extent that the assessment is not greater than the reasonable cost of the proportional special benefit conferred on those parcels.

Special Benefit street light systems are permanent streetlight systems designed to meet City standards of illumination which provide special benefit to nearby properties. These are generally systems with steel or concrete poles, underground wiring, intended to be part of a complete system providing a designed level of illumination and uniformity on the roadway and sidewalk areas. These systems are generally installed through either, assessments to nearby benefiting properties, grants or through requirements on private developments, and are owned by the Department of Public Works. The financing of their entire costs of operation and maintenance is through the annual assessment of nearby properties that are determined to receive special benefit. All general benefits, if any, to the surrounding community and public in general from these special benefit streetlight systems are intangible and are not quantifiable.

**B. GENERAL BENEFIT** is defined as a benefit to properties in the surrounding community or a benefit to the public in general resulting from the improvements, activities or services to be provided by the assessment levy. These benefits include the benefit from street lighting systems for locations that do not benefit specific properties, as well as interim lighting for minimal traffic safety on wooden power poles and permanent lighting at intersections with mast arm or traffic vehicular heads. Any special benefit from these lights will be intangible and not quantifiable in relation to their General Benefit use. Proposition 218 requires the City to finance general benefit costs from other than property assessments. These costs are financed from public funds.

General Benefit lighting systems are permanent street light system and which illuminate vehicular and pedestrian bridges and tunnels; intersections with mast arm or traffic vehicular heads; and other locations where there are no adjacent or nearby properties which receive direct, special benefit. These are part of a complete system for the structure, or street, providing a designed level of illumination and uniformity on the roadway and sidewalk areas. The financing of their entire costs of operation and maintenance is through public funds and/or Department of Water and Power funds. These systems are generally installed with public funding, and owned by the Department of Public Works.

**C. UTILITARIAN LIGHTING** is a general benefit type of street lighting that is installed, operated and maintained by the Department of Water and Power. These lights are mounted on wooden power poles, and do not have a designed average level of uniformity or illumination. These lights are considered interim, minimal safety lighting for specific locations where there are no permanent street lighting systems. The costs of operation are financed through the Department of Water and Power. However, for "continuous utilitarian lighting" systems, or "continuous alley lighting", the lighting benefit associated with these systems exceeds standard lighting requirements, therefore these special systems are considered as systems with a special benefit component.

## **HOW MAINTENANCE ASSESSMENTS ARE CALCULATED**

---

Based on Council Policy, Los Angeles Administrative Code, annual City Budgets, and assessment proceedings, assessments are for the total estimated amount of the cost of operation and maintenance.

**All costs of street lighting maintenance and operation for the subject lighting systems deemed as special benefit are to be assessed - none are to be financed with public funds.**

The total estimated amounts of revenues and operating costs for previously assessed parcels are shown in the annual reports for the Los Angeles City Street Lighting Maintenance Assessment District (LACLD). The assessment rates are based on these estimates, which rely on actual costs for previous years, and on historic relationships between the different rates.

Proper maintenance and operation of the streetlight infrastructure benefits all properties within the District by providing security, safety, and community character and vitality.

In addition, Proposition 218, the "Right to Vote on Taxes Act" which was approved on the November 1996 statewide ballot and added Article XIII D to the California Constitution, requires that a parcel's assessment may not exceed the reasonable cost for the proportional special benefit conferred on that parcel. Article XIII D provides that only special benefits are assessable and the City must separate the general benefits from the special benefits. It also requires that publicly owned properties, which benefit from the improvements, be assessed.

## **METHODOLOGY**

The process of determining maintenance assessments for each parcel is based on evaluating three areas of calculation which are relative to the amount of special benefit received. These areas of calculation are: equivalent dwelling units (EDU), benefit zones (rates), and adjustment factors.

### **Assessment Calculation for a Parcel**

$$\text{Assessment Cost} = (\text{Equivalent Dwelling Units}) \times (\text{Benefit Zone Rate}) \times (\text{Adjustment Factor})$$

Where,  $\text{Adjustment Factor} = (\text{Benefit Factor}) \times (\text{Partial Lighting Factor}) \times (\text{Lot Shape Factor})$

The following section explains each area of calculation in more detail:

### **EQUIVALENT DWELLING UNITS**

The calculation will take into account the different land uses on the properties for comparative purposes. (E.g. A vacant property vs. a multiple family property vs. a commercial property.)

**The medium density single-family residential parcel has been selected as the basic unit for calculation of assessments;** therefore, the medium density single-family residential parcel is defined as one (1) Equivalent Dwelling Unit (EDU). The calculation methodology developed relates all other land uses, and their respective lot sizes, to the medium density single-family residential land use. The determination of the EDU takes into account two factors in relation to a SFR: land use, and the lot size.

Land Use of the parcel The EDU is adjusted in accordance with the land use of the property. The factor assigned is related to the approximate use or trips generated for a particular property type. For example, multiple family residences, with many dwelling units, will have more use of the property and of a street lighting system, compared to SFR. Similarly, vacant properties and agricultural properties of similar size, will have less use and benefit, compared to SFR. The land use adjustment determines the proportional special benefit that the parcel derives from the use of the street lighting system within the vicinity.

Size of the parcel One of the factors in determining the EDU of all properties is evaluating the size of a parcel compared to the average lot size of a medium density SFR. Based on an analysis of all of the properties within the City of Los Angeles, it has been determined that the average medium SFR lot size is approximately 7,000 to 8,000 sq. ft. From this same data, the EDU conversion factor is adjusted proportionally with respect to various land use distributions across eight lot size categories. They are: less than 0.1 acres, 0.1 to 0.2 acres, 0.2 to 0.4 acres, 0.4 to 0.8 acres, 0.8 to 1.5 acres, 1.5 to 3.0 acres, 3.0 to 6.0 acres, and greater than 6.0 acres.

Table 1, on the following page, summarizes the EDU conversion factors for various land uses and their respective lot sizes.

**TABLE 1 - EQUIVALENT DWELLING UNIT (EDU)**

LAND USE		ACREAGE								
		< 0.1	0.1-0.2	0.2-0.4	0.4-0.8	0.8-1.5	1.5-3.0	3.0-6.0	> 6.0	
<b>RESIDENTIAL</b>	<b>SINGLE FAMILY</b>	0.75	1	1.25	1.5	1.75	2	2.25	2.5	
	<b>MULTI-FAMILY</b> <small>APARTMENTS, CONDOS, PRIVATE COMMUNITIES</small>	2 - 4 units	1.5	1.75	3.25	5.5	8	11	14	18
		5 - 15 units	1.75	2	3.75	6.25	9	13	15	21
		16 - 25 units	2	2.5	4.5	7	10	15	17	25
		26 - 50 units	2.5	3	5	8	11.5	17	19	30
		> 50 units	3	4	6	9.5	13	19	25	40
<b>NON-RESIDENTIAL</b>	<b>COMMERCIAL INSTITUTION GOVERNMENT</b>	0.75	1.25	2	4	6	11.5	20	40	
	<b>INDUSTRIAL UTILITY</b>	0.5	1	1.25	2.25	4	7	10	25	
	<b>MOBILE HOME PARKS</b>	0.35	0.75	1	1.75	3	4.25	7.5	15	
	<b>VACANT AGRICULTURE</b>	0.25	0.5	0.75	1.25	1.75	3.5	4.5	8	

**RESIDENTIAL**

Residential properties include single family residential parcels and multiple family residential parcels.

- Single Family Residential (SFR) Parcels: All SFR parcels with lot sizes equal to 0.1 acre, and up to 0.2 acre, are considered medium density SFR, and are assigned the value of 1 equivalent dwelling unit (EDU).
- Multi-Family Residential (MFR) Parcels: The equivalencies of multi-residential land uses, such as apartments, condominiums, and private communities, are calculated based on their respective population densities (dwelling units to lot size), and their residential land uses as they relate to the medium-density SFR. These factors are derived from trip generation rates and estimated wastewater usage, which are both related to population density and usage.

**NON-RESIDENTIAL**

Non-residential properties include commercial, government, institutional (such as schools, churches and hospitals), industrial, utility, mobile homes, parks, vacant lots, and agricultural.

- Vacant and agricultural properties consists of parcels with few or no improved structures. Utilization of vacant property is significantly less than improved property, therefore receive substantially less lighting benefit.

**BENEFIT ZONES (RATES)**

Benefit Zones are used to differentiate between the different types of lighting services each parcel receives. These zones indicate the type of lighting system used (i.e. ornamental, modern, pedestrian, etc.), as well as the location where the lighting system will be installed (i.e. arterial, residential, etc.)

Each benefit zone will have a specific assessment rate associated with it. The rates associated with these zones have been set in accordance to the Bureau's current maintenance district. These rates include costs for energy, maintenance, administration and eventual replacement.

The assessment each parcel receives will be relative to the proportioned benefit received from each benefit zone. Parcel receiving benefit from multiple lighting systems, may be included in multiple benefit zones relative to the proportioned benefit.

Zones may be adjusted due to any identified general benefit component. For parcels on corners with more than one lit side, the parcel will be zoned per the side that the property takes access. We have determined that there are five (7) different levels of benefit within the District, and these are distinguished by different zone designations. The zones identified below are assumed to utilize energy efficient lamps. Any request for lamps that are not energy efficient or require additional maintenance will need to be evaluated and the rate will need to be adjusted accordingly.

**TABLE 2 – BENEFIT ZONE SUMMARY**

<b>BENEFIT ZONE</b>	<b>DESCRIPTION</b>	<b>RATE</b>
<b>Zone 1</b>	This zone is an ornamental lighting system on residential streets. This lighting system generally is used to illuminate the roadway and sidewalk areas.	<b>\$82.59</b>
<b>Zone 2</b>	This zone is a modern lighting system on residential streets.	<b>\$61.20</b>
<b>Zone 3</b>	This zone is a modern lighting system on arterial streets.	<b>\$136.47</b>
<b>Zone 4</b>	This zone is applied to lighting systems that require additional maintenance or energy greater than standard energy efficient lamps.	<b>\$21.60</b>
<b>Zone 5</b>	This zone is for special stand alone pedestrian electrolers on arterial streets. The lighting system provides illumination for pedestrian use only. This zone would be in addition to zone's 1, 2, 3 or 4.	<b>\$89.78</b>
<b>Zone 6</b>	This zone is for special pedestrian systems that are attached to existing roadway electrolers. This zone would be in addition to zone's 1, 2, 3 or 4.	<b>\$54.14</b>
<b>Zone 7</b>	This zone is for continuous utilitarian alley lighting. This type of lighting consists of simple 100W HPS luminaires mounted to existing wooden power poles. Standard util lighting (general benefit) is spaced no closer than 300 feet to another existing street lighting source. Continuous utilitarian alley lighting (special benefit) exceeds this standard, and may be spaced at closer intervals.	<b>\$25.16</b>

The following table, which is based on the FY 2006/07 estimated annual budget, provides more detail regarding the maximum assessment rates for each of the Zones:

**TABLE 3 – ASSESSMENT RATE DETAILS**

ZONE	Admin & Eng	Energy (ECA, Utility Users Tax)	Replace	Repair	Tree Trim	Total BU	Total FY 2004-05 Max \$/BU *
1	\$541,745	\$ 1,175,461.83	\$450,130	\$548,859	\$120,264	34,343.44	\$82.59
2	\$6,008,929	\$10,636,819.25	\$4,992,757	\$6,087,840	\$1,333,943	474,857.79	\$61.20
3	\$2,252,888	\$ 4,622,360.97	\$1,871,902	\$2,282,474	\$500,126	84,486.29	\$136.47
4	\$5,967	\$ 315,887.76	\$0	\$6,045	\$0	15,182.44	\$21.60
5	\$205,715	\$ 536,528.47	\$170,926	\$208,416	\$45,667	13,273.31	\$89.78
6	\$762	\$ 297,504.72	\$14,284	\$772	\$0	6,336.65	\$54.14
<b>TOTAL</b>	<b>\$9,016,006</b>	<b>\$17,584,563</b>	<b>\$7,500,000</b>	<b>\$9,134,407</b>	<b>\$2,000,000</b>		<b>\$45,234,970</b>

*\*The maximum annual maintenance assessment rates will be increased each year by 2%, not to exceed the annual change in the Consumer Price Index (CPI) for all Urban Consumers for the Los Angeles, Riverside, Orange County Areas.*

**ADJUSTMENT FACTORS**

These include benefit factors, partial lighting factors, and lot shape factors. Benefit Factors will define the benefit associated with the use of the property. Partial lighting factors will define the proportion of lighting benefit received by the affected properties. Lot shape factors will provide adjustments for odd shaped lots where the available benefiting frontage is disproportionate to the relative amount of lighting benefit received (e.g. flag-lots, corner lots, etc.).

**Benefit Factors** - The EDU rates are modified by Benefit Factors that relate to how a particular land use benefits from streetlights. The amount of benefit received will vary with the different land use on the property. There are two categories from which the benefit of a parcel is derived:

1. **Security and Safety Benefit.** The prevention of crime and the alleviation of the fear of crime at the assessed properties, and the prevention of local pedestrian and traffic accidents related to the assessed properties.
2. **Community Character and Vitality Benefit.** The promotion of social interaction, promotion of business and industry, and the contribution to a positive night time visual image for the assessed properties.

To assign the benefit factors, each land use is compared to residential properties. Residential properties are the base properties and are assigned benefit factors of 1 for both the "Security and Safety Benefit" and the "Community Character and Vitality Benefit". Commercial and Parks benefit similarly to residential property and therefore are assigned the same benefit factors. Industrial and utility properties receive benefits from added security and safety, but receive little to no benefit for community character and vitality, as the nature of these properties do not promote either. Likewise, vacant and agriculture properties receive benefits from added security and safety, although not at nearly the level of a developed property, but receive little benefit from additional community character and vitality.

Table 4 on the following page provides a summary of the Benefit Factors that are applied.

**Table 4 – STREET LIGHTING BENEFIT FACTORS**

Land Use	Residential (non-arterial)	Residential (arterial)	Commercial	Institutional (schools)	Utility, Industrial	Park	Vacant, Agriculture
Security and Safety	1	1	1	1	1	1	0.5
Community Character and Vitality	1	0.5	1	0.5	0	1	0.5
Subtotal:	2	1.5	2	1.5	1	2	1
Applied Benefit Factor	1	0.75	1	0.75	0.5	1	0.5

**Partial Lighting Factors** - The EDU rates are further modified by Partial Lighting Factors that take into consideration the amount of benefiting frontage lit by the streetlights. If almost the entire frontage of a parcel is lit, then the Partial Lighting Factor is 1.0. If the frontage of a parcel is not fully lit, then a Partial Lighting Factor of 0.75, 0.50 or 0.25 will be applied depending on the percentage of frontage lit.

**Lot Shape Factors** - Lot shape factors will provide adjustments for odd shaped lots where the available benefiting frontage is disproportionate to the relative amount of lighting benefit received. For lots where the amount of lighting benefit received exceeds normal design standards, the assessment will be increased 10%. An example of this case would be corner lots with two or more benefiting sides, compared to similar shaped mid-block lots with only one benefiting side (normal configuration). For lots where the amount of lighting benefit received is less than comparable lots of similar size and land use, such as flag-lots, compound flag lots, or complex lots, they will receive assessment discounts of 25%, 50%, and 75%, respectively.

The actual assessments levied in any fiscal year will be as approved by the City Council and may not exceed the maximum assessment rate without receiving property owner approval for increase. The actual annual assessment rates for each Zone will be calculated each year based on the estimated costs of operating and maintaining the street lighting system in the following fiscal year. **The funding source to repair and maintain the City of Los Angeles' general benefit lights are not included in the estimated annual budget.**

For parcels with mixed use, such as a commercial / residential combination, the benefit units are calculated for each use separately, and the higher of the two calculations will be used.

**It is our conclusion that the proposed street lighting maintenance assessments follow the methodology described above.**

**SPECIFICATIONS FOR THE OPERATION OF  
STREET LIGHTING MAINTENANCE DISTRICTS  
IN THE CITY OF LOS ANGELES  
FOR 2006-07**

**WORK TO BE DONE.** The work and improvement to be done shall be the operation, including furnishing electric energy and timing/switching; maintenance, including lamp changing, emergency services, pole painting, fixture cleaning and glassware replacement, and rehabilitation, which includes modernization and replacement of systems; repairs, including poles, conduit, wiring and fusing, and fixtures repair and replacement; management of the funds, records, engineering, equipment approval and testing, administration and assessments, buildings, vehicles, equipment and materials; and related activities for the street lighting system designated herein under the "MAINTENANCE ASSESSMENT DISTRICT," for the fiscal year ending June 30, 2007, in accordance with the report of the Board of Public Works therefore, on file in the office of the City Clerk.

**AUTHORITY.** The said work and improvement is to be made under and is to be governed in all particulars by the Charter of the City of Los Angeles, Section 580 and other sections; the Los Angeles Administrative Code, Section 6.95-6.127; Proposition 218 (Articles XIII C and XIII D of the California Constitution), and the Ordinance of Intention to be hereafter adopted therefore.

**LIGHTING SYSTEM.** The street lighting system consists of electroliers, luminaires, and lamps, together with the necessary conduits, cables, wires and other appurtenances. Plans showing the location and description of said equipment are on file in the office of the Bureau of Street Lighting and are hereby referred to and made a part of these specifications. The properties to be benefited by the work and improvement are designated in the assessment diagrams on file in the office of the Bureau of Street Lighting, Assessment Engineering Division, and are hereby referred to and made a part of the specifications.

**OPERATION SCHEDULES.** The lighting system shall be lighted in accordance with the All Night and 1:00 a.m. schedules of operation, and minor exceptions, as agreed upon by the Department of Public Works and the Department of Water and Power, or other utility suppliers.

**ELECTRIC ENERGY.** It is contemplated that the City of Los Angeles, through its Department of Public Works, will purchase electric energy as it may deem necessary from the Department of Water and Power, or other utility suppliers, in accordance with the terms, conditions, and rates prescribed for in such services as have been agreed upon by the Board of Public Works and the utility supplier, and approved by the City Council.

**MAINTENANCE.** The Department of Public Works will itself perform the work, or will contract for certain work with the Department of Water and Power, or private companies, in providing normal maintenance for the following district(s), in accordance with the terms, and conditions as prescribed for in such services as have been agreed upon by the Board of Public Works and the supplier, and approved by the City Council.

**MAINTENANCE ASSESSMENT DISTRICT TITLE**

**Sherman way and Rancito Ave. (Re-ballot) Lighting District**

**REPAIRS.** The Department of Public Works, will itself perform the repair work, or will contract for certain work with private companies, provide the materials, equipment and expense, appliances, and other appurtenances and appurtenant work necessary to repair the street lighting system. This may also require approval by the City Council.





FRANK T. MARTINEZ  
City Clerk

KAREN E. KALFAYAN  
Executive Officer

When making inquiries  
relative to this matter  
refer to File No.

04-1874

CD 2

June 22, 2005

CITY OF LOS ANGELES  
CALIFORNIA



JAMES K. HAHN  
MAYOR

PLACE IN FILES

JUN 24 2005

DEPUTY *CF*

Office of the  
CITY CLERK  
Council and Public Services  
Room 395, City Hall  
Los Angeles, CA 90012  
Council File Information - (213) 978-1043  
General Information - (213) 978-1133  
Fax: (213) 978-1040

HELEN GINSBURG  
Chief, Council and Public Services Division

Bureau of Engineering  
Bureau of Street Lighting  
City Clerk, Land Records Division  
Board of Public Works  
Councilmember Greuel

Controller, Room 300  
Accounting Division, F&A  
Disbursement Division  
City Attorney  
Chief Legislative Analyst

RE: ABANDONING ALL PROCEEDINGS RELATING TO THE SHERMAN WAY AND RANCHITO AVENUE LIGHTING DISTRICT

At the meeting of the Council held June 3, 2005, the following action was taken:

Motion adopted to approve Bureau of Street Lighting report.....	_____
Attached resolution ( - ) adopted.....	_____
Mayor concurred.....	_____
FORTHWITH.....	_____
Ordinance adopted.....	X
Ordinance number.....	176732
Effective date.....	06-25-05
Posted date.....	06-15-05
Mayor approved.....	06-13-05
Set for Hearing.....	_____
To the Mayor FORTHWITH.....	_____

*Frank T. Martinez*

City Clerk  
SOS

Mayor's Time Stamp  
OFFICE OF THE MAYOR  
RECEIVED

2005 JUN -8 AM 9:18

CITY OF LOS ANGELES

TIME LIMIT FILES  
ORDINANCES

RECEIVED  
City Clerk's Time Stamp  
CITY CLERK'S OFFICE

2005 JUN -8 AM 9:18

CITY CLERK

BY \_\_\_\_\_ DEPUTY

COUNCIL FILE NUMBER 04-1874

COUNCIL DISTRICT 2

COUNCIL APPROVAL DATE JUNE 3, 2005

LAST DAY FOR MAYOR TO ACT JUN 20 2005

ORDINANCE TYPE:  Ord of Intent  Zoning  Personnel  General

Improvement  LAMC  LAAC  CU or Var Appeals - CPC No. \_\_\_\_\_

SUBJECT MATTER: ABANDONING ALL PROCEEDINGS FOR SHERMAN WAY AND RANCHITO AVENUE LIGHTING DISTRICT

APPROVED      DISAPPROVED

MAJORITY PROTESTS  
(PROPOSITION 218)

X      \_\_\_\_\_

CITY ATTORNEY

X      \_\_\_\_\_

OTHER: \_\_\_\_\_

\_\_\_\_\_

DATE OF MAYOR APPROVAL, DEEMED APPROVED OR \*VETO: \_\_\_\_\_

\*VETOED ORDINANCES MUST BE ACCOMPANIED WITH OBJECTIONS IN WRITING PURSUANT TO CHARTER SEC. 25(b) (C)

JUN 13 2005

RECEIVED  
CITY CLERK'S OFFICE  
2005 JUN 13 PM 4:01  
BY \_\_\_\_\_  
CITY CLERK  
DEPUTY

(CITY CLERK USE ONLY PLEASE DO NOT WRITE BELOW THIS LINE)

DATE RECEIVED FROM MAYOR JUN 13 2005 ORDINANCE NO. 176732

DATE PUBLISHED \_\_\_\_\_ DATE POSTED JUN 15 2005 EFFECTIVE DATE JUN 25 2005

ORD OF INTENT: HEARING DATE \_\_\_\_\_ ASSESSMENT CONFIRMATION \_\_\_\_\_

ORDINANCE FOR DISTRIBUTION: Yes [ ] No [ ]

JUN 17 2005  
STLIGHT

ORDINANCE NO. 176732

An Ordinance of the City of Los Angeles abandoning all proceedings relating to the improvement of Sherman Way and Ranchito Avenue Lighting District, as contemplated by Ordinance No. 176525 and repealing said ordinance.

**THE PEOPLE OF THE CITY OF LOS ANGELES DO ORDAIN AS FOLLOWS:**

Section 1. All proceedings relating to the improvements contemplated by Ordinance of Intention No. 176525 are hereby abandoned.

Section 2. Ordinance No. 176525 approved March 4, 2005 is hereby repealed.

Section 3. The City Clerk shall certify to the passage of this ordinance and have it published in accordance with Council policy, either in a daily newspaper circulated in the City of Los Angeles or by posting for ten days in three public places in the City of Los Angeles: one copy on the bulletin board located in the Main Street lobby to the City Hall; one copy on the bulletin board located at the ground level at the Los Angeles Street entrance to the Los Angeles Police Department; and one copy on the bulletin board located at the Temple Street entrance to the Los Angeles County Hall of Records.

I hereby certify that the foregoing ordinance was introduced at the meeting of the Council of the City of Los Angeles MAY 27 2005, and passed at it's meeting of JUN 03 2005.

FRANK T. MARTINEZ, City Clerk

By [Signature]  
Deputy

[Signature]  
Mayor

Approved JUN 13 2005

Approved as to Form and Legality

ROCKARD J. DELGADILLO, City Attorney

By [Signature]

Deputy City Attorney

Date: 5-24-05

COUNCIL FILE NO. 04-1874

**DECLARATION OF POSTING ORDINANCE**

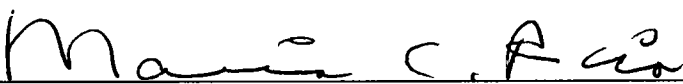
I, MARIA C. RICO, state as follows: I am, and was at all times hereinafter mentioned, a resident of the State of California, over the age of eighteen years, and a Deputy City Clerk of the City of Los Angeles, California.

Ordinance No. 176732 - Abandoning all proceedings relating to improvement of Sherman Way and Ranchito Avenue Lighting District - 176525 repealed - a copy of which is hereto attached, was finally adopted by the Los Angeles City Council on June 3, 2005, and under the direction of said City Council and the City Clerk, pursuant to Section 251 of the Charter of the City of Los Angeles and Ordinance No. 172959, on June 15, 2005, I posted a true copy of said ordinance at each of three public places located in the City of Los Angeles, California, as follows: 1) One copy on the bulletin board at the Main Street entrance to Los Angeles City Hall; 2) one copy on the bulletin board at the ground level Los Angeles Street entrance to the Los Angeles Police Department; and 3) one copy on the bulletin board at the Temple Street entrance to the Hall of Records of the County of Los Angeles.

Copies of said ordinance were posted conspicuously beginning on June 15, 2005 and will be continuously posted for ten or more days.

I declare under penalty of perjury that the foregoing is true and correct.

Signed this 15th day of June 2005 at Los Angeles, California.

  
\_\_\_\_\_  
Maria C. Rico, Deputy City Clerk

Ordinance Effective Date: June 25, 2005 Council File No. 04-1874



DEPARTMENT OF PUBLIC WORKS  
BUREAU OF STREET LIGHTING  
REPORT NO. 1

SEPTEMBER 20, 2004

C.D. 2

Honorable Board of Public Works  
of the City of Los Angeles

ADOPTED BY THE BOARD OF  
PUBLIC WORKS OF THE CITY  
of Los Angeles, California  
AND REFERRED TO THE CITY COUNCIL  
SEP 20 2004

  
Secretary

**SHERMAN WAY AND RANCHITO AVENUE LIGHTING DISTRICT –  
STREET LIGHTING MAINTENANCE ASSESSMENTS PROCESSING CONFORMING TO PROPOSITION 218**

---

**RECOMMENDATIONS:**

1. That this report be adopted by your Board and forwarded, together with the transmittals, to the City Clerk and City Council with your Board's recommendations that:
  - a. Council adopt this report and the Ordinance of Intention and that the proceedings be conducted in accordance with Sections 6.95 - 6.127 of the Los Angeles Administrative Code, Section 53753 of the California Government Code, and Proposition 218 (Articles XIII C and XIII D of the California Constitution). This includes Council holding a Public Hearing for the district.
  - b. Upon Council adoption of the Ordinance of Intention, the City Clerk be instructed to: 1) Mail notices of the assessment ballot proceedings, 2) Mail assessment ballots (as required by Prop. 218) prepared by the Bureau of Street Lighting and the City Clerk, to the property owners in the lighting district, and 3) Conduct the assessment ballot proceedings.
  - c. Upon completion of **Item b** above, the City Clerk be instructed to count, certify and report the results of the assessment ballot proceedings to the Council.
  - d. Following the conclusion of the final public hearing, if a project has weighted "YES" votes equal to or in excess of weighted "NO" votes, Council deny the appeals, confirm the maintenance assessments, and adopt the Final Ordinance levying the assessments. If weighted "NO" votes are in excess of weighted "YES" votes, Council will abandon the lighting district and proceedings in accordance with Proposition 218, and the affected street lighting system will not be constructed.
2. That a copy of this report be provided to each affected Council office and the Mayor's Office of Economic Development.

**FISCAL IMPACT STATEMENT:**

If adopted, \$1071.00 will be collected annually starting with tax year 2004/05 that will go into a dedicated street lighting maintenance assessment account for the use in the operation and maintenance of the district's street lighting system.

**TRANSMITTALS:**

1. Ordinance of Intention, approved as to form and legality by the City Attorney, for the proposed assessment district.
2. Diagram delineating those lands proposed to be assessed.
3. Proposed assessment roll.
4. Engineer's report as required by Proposition 218.

**DISCUSSION:**

This report submits the proposed Ordinance of Intention to institute **maintenance** assessment proceedings for one street lighting project. The following is a brief description of the street lighting improvements within the district:

**Sherman Way and Ranchito Avenue Lighting District - C.D. 2**

This is a private development project that proposes to install one streetlight along Ranchito Avenue north of Sherman Way. This project is proposed to **assess** 18 parcels, 14 of which are condominiums, for operation and maintenance.

The proposed annual assessment amounts for the lighting district are as follows:

	<u>12 mos.</u>
<b>Sherman Way and Ranchito Avenue Lighting District</b>	<b>\$1071.00</b>

**FISCAL IMPACT STATEMENT:**

If adopted, \$1071.00 will be collected annually starting with tax year 2004/05 that will go into a dedicated street lighting maintenance assessment account for the use in the operation and maintenance of the district's street lighting system.

**TRANSMITTALS:**

1. Ordinance of Intention, approved as to form and legality by the City Attorney, for the proposed assessment district.
2. Diagram delineating those lands proposed to be assessed.
3. Proposed assessment roll.
4. Engineer's report as required by Proposition 218.

**DISCUSSION:**

This report submits the proposed Ordinance of Intention to institute **maintenance** assessment proceedings for one street lighting project. The following is a brief description of the street lighting improvements within the district:

**Sherman Way and Ranchito Avenue Lighting District - C.D. 2**

This is a private development project that proposes to install one streetlight along Ranchito Avenue north of Sherman Way. This project is proposed to **assess** 18 parcels, 14 of which are condominiums, for operation and maintenance.

The proposed annual assessment amounts for the lighting district are as follows:

	<u>12 mos.</u>
<b>Sherman Way and Ranchito Avenue Lighting District</b>	<b>\$1071.00</b>



DEPARTMENT OF PUBLIC WORKS  
BUREAU OF STREET LIGHTING  
REPORT NO. 1

If levied, the administration of this district may be combined with that of another district or districts in the future as provided in the Ordinance of Intention.

The passage of Proposition 218 on November 5, 1996, requires a vote of the property owners prior to Council confirming and levying the assessments for maintenance.

Upon adoption of the transmitted Ordinance of Intention, the Council will set a date for hearing appeals and the last day to receive completed assessment ballots. A hearing to be held by your Board will be scheduled at least one week prior to the date of the public hearing before the City Council to review and resolve any appeals concerning the proposed maintenance assessments. If the assessment ballot proceeding as required by Proposition 218 approves these assessments, the City Council may confirm and levy the assessments.

In accordance with Council Policy adopted on December 11, 1998, the Bureau of Street Lighting will cast ballots in favor of the assessments for all Council controlled public properties in the district. The **Sherman Way and Ranchito Avenue** Lighting District includes no public parcels.

The protests that are received, as described in the Administrative Code, are for the consideration of the Council, but are not binding. Only a majority vote against the assessment is binding.

Report prepared by:  
Community Services Division  
Prop. 218 Compliance Section  
Michael Siregar, St. Lighting Assoc. I  
Jay Wong, P.E., St. Lighting Assoc. III  
Norma Marrero, P.E., Sr. Street Lighting Engineer  
(213) 847-6404

Respectfully submitted,

*Norma Marrero for*  
Phil Reed, Director  
Bureau of Street Lighting

*ORD of Intent*  
**ADOPTED**  
MOTION ADOPTED TO APPROVE COMMUNICATION RECOMMENDATIONS  
MAR 04 2005

(MS: L:\\$PROP218\Board Report\BR - Sherman Way & Ranchito.doc) **LOS ANGELES CITY COUNCIL**  
**SET FOR HEARING** *MAY 6, 2005*

*MAY 27 2005 - Public Hearing Closed  
No Protest*

*MAY 06 2005 - MEETING CANCELLED -  
scheduled for May 10, 2005*

*ORD OVER ONE WEEK TO...*

**MAY 10 2005 - PUBLIC HEARING HELD - CONTINUE  
HEARING AND ORDINANCE TO BE  
PRESENTED MAY 27, 2005**

*JUN 03 2005 - ORD. ADOPTED*

**BOARD OF PUBLIC WORKS  
MEMBERS**

**VALERIE LYNNE SHAW**  
PRESIDENT

**ELLEN STEIN**  
VICE PRESIDENT

**JANICE WOOD**  
PRESIDENT PRO-TEMPORE

**RONALD LOW**  
COMMISSIONER

**YOLANDA FUENTES**  
COMMISSIONER

**CITY OF LOS ANGELES**  
CALIFORNIA



**JAMES K. HAHN**  
MAYOR

04-1874  
04-1874

**OFFICE OF THE  
BOARD OF PUBLIC WORKS**  
200 N. Spring St., Rm. 355, City Hall  
LOS ANGELES, CA 90012

JAMES A. GIBSON  
EXECUTIVE OFFICER

GENERAL INFORMATION  
(213) 978-0261  
FAX: (213) 978-0278  
TDD: (213) 978-2310

April 25, 2005

**Council Hearing - 5/6/05**  
(#1 SL of 9/20/04)

City Council  
Room 395  
City Hall

Honorable Members:

Inasmuch as no one protested the assessments pursuant to the hearing scheduled this date, in connection with the maintenance for Sherman Way and Ranchito Avenue Lighting District - Street Lighting Maintenance Assessments Processing Conforming to Proposition 218, the Board of Public Works recommends that the assessments therefore be confirmed.

Respectfully submitted,

*James A. Gibson for JAG*

James A. Gibson  
Executive Officer  
Board of Public Works

JAG/TS:mp

cc: Chairperson, Public Works Committee  
Director, Bureau of Street Lighting  
City Engineer

7  
FRANK T. MARTINEZ  
CITY CLERK

KAREN E. KALFAYAN  
EXECUTIVE OFFICER

CITY OF LOS ANGELES  
CALIFORNIA



JAMES K. HAHN  
MAYOR

OFFICE OF THE  
CITY CLERK  
ELECTION DIVISION

ROOM 285  
200 N. SPRING STREET  
LOS ANGELES, CA 90012  
(213) 978-0444  
FAX (213) 978-0376

ARLEEN P. TAYLOR  
CHIEF OF ELECTIONS

May 20, 2005

The Los Angeles City Council  
City Hall, Los Angeles, California

REGARDING: ASSESSMENT BALLOT PROCEEDING FOR:  
SHERMAN WAY AND RANCHITO AVENUE LIGHTING DISTRICT  
COUNCIL FILE NUMBER 04-1874

Honorable Councilmembers:

In accordance with Proposition 218, the City of Los Angeles provided notice to the property owners of the parcels in the proposed Sherman Way and Ranchito Avenue Lighting District, as specified in the subject Council File. Along with that notice, each property owner received an assessment ballot weighted by the amount of the parcel's proposed assessment. I have tabulated the assessment ballots delivered to my office by the final hearing date of May 10, 2005.

The proposed assessment district failed, because it received a weighted majority of "no" ballots as defined in Article XIII D (Proposition 218) of the State Constitution. As a result, the City may not impose an assessment for the improvement and maintenance of lighting in the proposed district. The certified results of the tabulations are attached. I have also forwarded a copy of these results to the Department of Public Works, Bureau of Street Lighting, for their information.

RECOMMENDATIONS FOR COUNCIL ACTION:

In accordance with Council policy adopted on December 19, 1997 (CF 97-0843) and the report of the Board of Public Works adopted by the Council on May 9, 1998:

1. FIND that a majority protest exists in the Street Lighting Maintenance Assessment District and therefore the proposed assessment cannot be enacted.
2. ADOPT the abandoning Ordinance attached to the Council File.
3. INSTRUCT the Director, Bureau of Street Lighting, to assure that the streetlights are not installed or are removed from service if previously installed, in accordance with Council policy.

Sincerely,

  
FRANK T. MARTINEZ  
City Clerk

Attachments

c: Department of Public Works, Bureau of Street Lighting





**Proposition 218 Assessment Ballot Tabulation for  
 Sherman Way and Ranchito Avenue Lighting District  
 Group 06027-1  
 Final Public Hearing May 10, 2005**

**Election # 742  
 Council File 04-1874**

**Ballot Tally**

Assmnt No.	County APN	Owner	Assessment Weight	Ballot Vote Y/N	Weighted Vote		No Vote/ Challenged
					Yes	No	
1	2216-005-003	Llerena	\$61.20	N		\$ 61.20	
2	2216-039-011	Kostandyan	\$61.20	Y	\$ 61.20		
3	2216-039-010	Rhodes	\$61.20		Not Cast	Not Cast	
4	2216-039-013	Mosqueda	\$244.80	N		\$ 244.80	
5	2216-005-029	Padilla	\$45.90		Not Cast	Not Cast	
6	2216-005-030	Dumdum	\$45.90	N		\$ 45.90	
7	2216-005-031	Carranza	\$45.90		Not Cast	Not Cast	
8	2216-005-032	Arreseigor	\$45.90		Not Cast	Not Cast	
9	2216-005-033	Undjian	\$45.90		Not Cast	Not Cast	
10	2216-005-034	Roxas	\$45.90	N		\$ 45.90	
11	2216-005-035	Magpantay	\$45.90		Not Cast	Not Cast	
12	2216-005-036	Kechedzian	\$45.90	Y	\$ 45.90		
13	2216-005-037	Briones	\$45.90		Not Cast	Not Cast	
14	2216-005-038	Buni	\$45.90		Not Cast	Not Cast	
15	2216-005-039	Rubio	\$45.90		Not Cast	Not Cast	
16	2216-005-040	Cortes	\$45.90		Not Cast	Not Cast	
17	2216-005-041	Avetisyan	\$45.90		Not Cast	Not Cast	
18	2216-005-042	Morato	\$45.90		Not Cast	Not Cast	
		TOTAL	\$1,071.00			\$107.10	\$397.80
	18	TOTAL VOTES		6	2	4	0

**Proposition 218 Assessment Ballot Tabulation for  
 Sherman Way and Ranchito Avenue Lighting District  
 Group 06027-1**

**Election # 742  
 Council File 04-1874**

**Final Public Hearing May 10, 2005**

<b>Voting/Ballot Summary</b>			
<b>Vote</b>	<b>Weighted Total</b>	<b>Assessment of Votes Cast</b>	<b>Percent</b>
Yes	\$107.10	21.21%	2
No	\$397.80	78.79%	4
No Vote			0
Challenged			0

<b>Assessment District Summary</b>			
	<b>Total</b>	<b>Voted</b>	<b>Percent</b>
Parcels	18	6	33%
Assessment	\$1,071.00	\$504.90	47%

COUNCIL VOTE

Jun 3, 2005 10:57:30 AM, #1

Items for Which Public Hearings Have Been Held - Items 1- 16  
Voting on Item(s): 1-9,11-15  
Roll Call

CARDENAS	Absent
GARCETTI	Absent
GREUEL	Yes
HAHN	Yes
LABONGE	Yes
LUDLOW	Yes
*MISCIKOWSKI	Yes
PARKS	Yes
PERRY	Absent
REYES	Absent
SMITH	Yes
VILLARAIGOSA	Yes
WEISS	Yes
ZINE	Yes
PADILLA	Yes
Present:	11, Yes: 11 No: 0

*ord.*





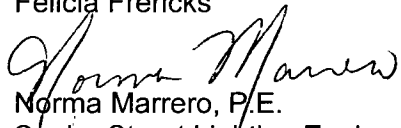
**CITY OF LOS ANGELES**  
INTER-DEPARTMENTAL CORRESPONDENCE

**DATE:** May 23, 2005

**TO:** Rockard J. Delgadillo, City Attorney  
7<sup>th</sup> Floor, City Hall East - 140

**Attn:** Felicia Frericks

**FROM:** Ed Ebrahimian, Interim Director  
Bureau of Street Lighting

**By:**   
Norma Marrero, P.E.  
Senior Street Lighting Engineer  
Bureau of Street Lighting

**SUBJECT:** ORDINANCE OF ABANDONMENT FOR LIGHTING MAINTENANCE DISTRICT

Transmitted is the Ordinance of Abandonment for the lighting district listed below for your review and approval as to form and legality.

**SHERMAN WAY AND RANCHITO AVENUE LIGHTING DISTRICT**

Please telephone Lowell Labez at (213) 473-5377 when ready for pick-up.

Thank you.

FRANK T. MARTINEZ  
City Clerk

KAREN E. KALFAYAN  
Executive Officer

When making inquiries  
relative to this matter  
refer to File No.

CITY OF LOS ANGELES  
CALIFORNIA



JAMES K. HAHN  
MAYOR

Office of the  
CITY CLERK  
Council and Public Services  
Room 395, City Hall  
Los Angeles, CA 90012  
Council File Information - (213) 978-1043  
General Information - (213) 978-1133  
Fax: (213) 978-1040

HELEN GINSBURG  
Chief, Council and Public Services Division

04-1874

CD 2

March 22, 2005

Bureau of Engineering  
Bureau of Street Lighting  
City Clerk, Land Records Division  
Board of Public Works  
Councilmember Greuel

Controller, Room 300  
Accounting Division, F&A  
Disbursement Division  
City Attorney  
Chief Legislative Analyst

RE: ESTABLISHING A HEARING DATE FOR THE MAINTENANCE OF SHERMAN WAY AND  
RANCHITO AVENUE LIGHTING DISTRICT

At the meeting of the Council held March 4, 2005, the following  
action was taken:

Attached report adopted .....	_____
Mayor concurred.....	_____
Ordinance adopted.....	_____
Ordinance of Intention adopted.....	_____ X _____
Ordinance number.....	_____ 176525 _____
Effective date.....	_____ 3-26-05 _____
Posted date.....	_____ 3-16-05 _____
Mayor approved.....	_____ 3-11-05 _____
Set for Hearing.....	_____ 5-06-05 _____
Mayor vetoed.....	_____
Motion adopted to approve attached report recommendation(s)....	_____
Motion adopted to approve communication recommendation(s).....	_____ X _____
To the Mayor FORTHWITH.....	_____
Mayor failed to act - deemed approved.....	_____

*Frank T. Martinez*

City Clerk  
dng



OFFICE OF THE MAYOR  
 Mayor's Time Stamp  
 RECEIVED  
 2005 MAR -9 PM 3:57  
 CITY OF LOS ANGELES

TIME LIMIT FILES  
 ORDINANCES

RECEIVED  
 City Clerk's Time Stamp  
 CITY CLERK'S OFFICE  
 2005 MAR -9 PM 3:51  
 CITY CLERK  
 BY \_\_\_\_\_ DEPUTY

COUNCIL FILE NUMBER 04-1874 COUNCIL DISTRICT 2  
 COUNCIL APPROVAL DATE MARCH 4, 2005 LAST DAY FOR MAYOR TO ACT MAR 21 2005  
 ORDINANCE TYPE:  Ord of Intent  Zoning  Personnel  General  
 Improvement  LAMC  LAAC  CU or Var Appeals - CPC No \_\_\_\_\_  
 SUBJECT MATTER: ESTABLISHING A HEARING DATE FOR THE MAINTENANCE OF SHERMAN WAY AND RANCHITO AVENUE LIGHTING DISTRICT

RECOMMENDATIONS:	APPROVED	DISAPPROVED
PLANNING COMMISSION	_____	_____
DIRECTOR OF PLANNING	_____	_____
CITY ATTORNEY	<u>X</u>	_____
CITY ADMINISTRATIVE OFFICER	_____	_____
BUREAU OF STREET LIGHTING	<u>X</u>	_____

RECEIVED  
 CITY CLERK'S OFFICE  
 2005 MAR 11 PM 1:52  
 CITY CLERK  
 BY \_\_\_\_\_ DEPUTY

DATE OF MAYOR APPROVAL, DEEMED APPROVED OR \*VETO: MAR 11 2005  
 \*VETOED ORDINANCES MUST BE ACCOMPANIED WITH OBJECTIONS IN WRITING PURSUANT TO CHARTER SEC. 29

(CITY CLERK USE ONLY PLEASE DO NOT WRITE BELOW THIS LINE)

DATE RECEIVED FROM MAYOR MAR 11 2005 ORDINANCE NO. 176525  
 DATE PUBLISHED \_\_\_\_\_ DATE POSTED MAR 16 2005 EFFECTIVE DATE MAR 26 2005  
 ORD OF INTENT: HEARING DATE \_\_\_\_\_ ASSESSMENT CONFIRMATION \_\_\_\_\_  
 ORDINANCE FOR DISTRIBUTION: Yes [] No []

ORDINANCE NO. 176525

An Ordinance pursuant to the provisions of Sections 6.95 - 6.127 of the Los Angeles Administrative Code, Section 53753 of the California Government Code, and Proposition 218 (Articles XIII C and XIII D of the California Constitution) declaring the intention of the Council of the City of Los Angeles to order the necessary street lighting systems to be operated, maintained, and repaired, including furnishing electric energy, for the current fiscal year of 2004-2005, for the lighting of that certain district designated as the

**SHERMAN WAY AND RANCHITO AVENUE  
LIGHTING DISTRICT**

**THE PEOPLE OF THE CITY OF LOS ANGELES DO ORDAIN AS FOLLOWS:**

Section 1. The public interest and convenience require, and it is the intention of the Council of the City of Los Angeles to order the following improvement to be made, to wit:

That the necessary street lighting equipment be operated, maintained and repaired and that electric energy be furnished for the current fiscal year of 2004-2005, for the lighting of:

**RANCHITO AVENUE,**

From 60' south of Cantlay Street to 130' north of Sherman Way,

in the City of Los Angeles (see Plan No. D-28525 for details). The street or portions of streets to be improved, and the district to be assessed to pay the costs and expenses of the improvement, shall be known for all proceedings hereunder as:

**SHERMAN WAY AND RANCHITO AVENUE  
LIGHTING DISTRICT**

Section 2. All of the said work shall be done in accordance with the report of the Director of the Bureau of Street Lighting adopted by the Board of Public Works, therefore, approved by the City Council and on file in the office of the City Clerk. Reference to said report is hereby made for a full and detailed description of the proposed improvement and of the assessments to be levied.

Section 3. The said Council hereby makes all the costs and expenses of said improvement, including incidental expenses, chargeable upon the district to be benefited thereby, with no additional portion of the costs to be paid out of the City Treasury.

Section 4. The Council hereby determines and declares that the district which receives special benefit from said improvement, and is to be assessed to pay the costs and expenses thereof, is described by the diagram with City page number 12300 and accompanying assessment roll included by reference in the said report of the Director of the Bureau of Street Lighting adopted by the Board of Public Works, which diagram indicates by a boundary line the extent of the territory included within the assessment district. Reference is hereby made to said report and diagram for a full and complete description of said district, which diagram shall govern for all details as to the extent thereof. All public streets and alleys or portions thereof are hereby excepted therefrom.

Section 5. That the proceedings for the said improvement shall be had and taken under and in accordance with Sections 6.95 - 6.127 of the Los Angeles Administrative Code, Section 53753 of the California Government Code, and Proposition 218 (Articles XIII C and XIII D of the California Constitution).

Section 6. The Board of Public Works shall prepare notices and ballots of said improvement to be mailed by the City Clerk to each property owner affected by the assessment, and have the notices to be published in newspapers of general circulation published and distributed in the several areas of the City in the manner and form and within the time required by law.

Section 7. The City Clerk shall conduct an assessment ballot proceeding for this lighting district, as required by Proposition 218 (Article XIII D of the California Constitution). Ballots shall be mailed with the hearing notices. The Clerk shall count, certify, and report the results to the Council. The Council shall not impose the proposed assessment if the count of the weighted "no" votes is greater than the weighted "yes" votes, and the specified lighting system will not be constructed. In tabulating the ballots, the ballots shall be weighted according to the proportional financial obligation of the affected property due to the improvement.

Section 8. The proposed street lighting maintenance assessments referenced herein are intended to be in addition to or in replacement of the existing assessment, as specified in the Engineer's Report. Where the proposed assessment is to be in addition to the existing assessment, whether the proposed assessment is levied or abandoned, the existing assessment shall not be affected. Where the proposed assessment is to be in replacement of the existing assessment, if the proposed assessment is not levied, the existing assessment shall not be affected.

Section 9. For each year following the first year of the assessment, the amounts of the assessments designated in the assessment roll may be increased annually, without further notice or ballot, by no more than the annual Consumer Price Index (CPI) for Los Angeles-Anaheim-Riverside CA, provided by the U.S. Dept. of Labor (Bureau of Labor Statistics). The annual Consumer Price Index (CPI) will be calculated from the calendar year (January 1-December 31) just prior to the assessment period affected (July 1-June 30).

Section 10. The administration of this district may be combined, without further notice or ballot, with the administration of any other district or districts, for which authority for such administrative combination is provided in the establishing ordinance. Such combined districts, for all administrative purposes including but not limited to, assessment, diagram, revenue and expenditures, notice and balloting, may be treated as a single district.

Section 11. Notwithstanding that the assessments specified in the assessment roll are imposed for the 2004/05 fiscal year, only if the street lighting system is energized on or before July 1, 2005 shall those assessments be transferred to the 2004/05 property tax rolls and collected. If the system is not energized on or before that date, the assessments approved herein, may be levied in the fiscal year following the year in which the system is energized, without further notice or ballot.

Section 12. That MAY 0 6 2005 at the hour of 10 o'clock a.m. is the time, and the Council Chamber on the third floor in City Hall the City of Los Angeles is the place, when and where a public hearing on the proposed improvement and assessment will be held by the City Council. Any person objecting to their assessment may file a written protest or appeal with the City Clerk at any time prior to the hearing by the City Council. Any person may also present written or oral comments at the City Council hearing on this matter. Such protest must contain a description of the property in which each signer thereof owns an interest, sufficient to identify the property, and be delivered to the City Clerk, and no other protests than those presented within the time specified will be considered.

Ballots are due to the City Clerk at any time prior to or on the day of the hearing by City Council. The City Clerk shall prepare a report of the assessment ballot proceeding results to the City Council.

Section 13. The City Clerk shall certify to the passage of this ordinance and have it published in accordance with Council policy, either in a daily newspaper circulated in the City of Los Angeles or by posting for ten days in three public places in the City of Los Angeles: one copy on the bulletin board located in the Main Street lobby to the City Hall; one copy on the bulletin board located at the ground level at the Los Angeles Street entrance to the Los Angeles Police Department; and one copy on the bulletin board located at the Temple Street entrance to the Los Angeles County Hall of Records.

I hereby certify that the foregoing ordinance was passed by the Council of the City of Los Angeles, at its meeting of MAR 04 2005.

FRANK T. MARTINEZ, City Clerk

By [Signature]  
Deputy

Approved MAR 11 2005

[Signature]  
Mayor

Approved as to Form and Legality

ROCKARD J. DELGADILLO, City Attorney

By [Signature]  
Deputy City Attorney

Date: 7-9-04

File No. 04-1874

DECLARATION OF POSTING ORDINANCE

I, MARIA C. RICO, state as follows: I am, and was at all times hereinafter mentioned, a resident of the State of California, over the age of eighteen years, and a Deputy City Clerk of the City of Los Angeles, California.

Ordinance No. 176525 - Ordinance of Intention - Sherman Way & Ranchito Ave Lighting District - Hearing set 5/6/05 - a copy of which is hereto attached, was finally adopted by the Los Angeles City Council on March 4, 2005, and under the direction of said City Council and the City Clerk, pursuant to Section 251 of the Charter of the City of Los Angeles and Ordinance No. 172959, on March 16, 2005, I posted a true copy of said ordinance at each of three public places located in the City of Los Angeles, California, as follows: 1) One copy on the bulletin board at the Main Street entrance to Los Angeles City Hall; 2) one copy on the bulletin board at the ground level Los Angeles Street entrance to the Los Angeles Police Department; and 3) one copy on the bulletin board at the Temple Street entrance to the Hall of Records of the County of Los Angeles.

Copies of said ordinance were posted conspicuously beginning on March 16, 2005 and will be continuously posted for ten or more days.

I declare under penalty of perjury that the foregoing is true and correct.

Signed this 16th day of March 2005 at Los Angeles, California.

  
\_\_\_\_\_  
Maria C. Rico, Deputy City Clerk

Ordinance Effective Date: Mar. 26, 2005

Council File No. 04-1874



# ORDINANCE OF INTENTION

04-1874  
CD 2

COMMUNICATION FROM THE BUREAU OF STREET LIGHTING and ORDINANCE OF INTENTION FIRST CONSIDERATION relative to establishing a hearing date for the maintenance of SHERMAN WAY AND RANCHITO AVENUE LIGHTING DISTRICT.

Recommendations for Council action, SUBJECT TO THE APPROVAL OF THE MAYOR:

1. ADOPT the report of the Director, Bureau of Street Lighting, dated September 20, 2004.
2. PRESENT and ADOPT the accompanying ORDINANCE OF INTENTION setting the date of MAY 6, 2005 as the hearing date for the maintenance of Sherman Way and Ranchito Avenue Lighting District, in accordance with Proposition 218, Articles XIIC and XIID of the California Constitution and Government Code Sections 50078.6, 54954.6 and 54960.1.

Fiscal Impact Statement: The Bureau of Street Lighting reports that if adopted, \$1,071 will be collected annually starting with tax year 2004-05 that will go into a dedicated street lighting maintenance assessment account for the use in the operation and maintenance of this street lighting district.

(Board of Public Works Hearing Date: April 25, 2005)

(ord of intent in Ccl. on 3-04-05)

cc: City Engineer  
Bureau of Street Lighting  
Land Records  
Chief Clerk, City Clerk  
Councilmember Greuel

**ADOPTED**  
MAR 04 2005  
**LOS ANGELES CITY COUNCIL**

# CITY OF LOS ANGELES

CALIFORNIA



JAMES K. HAHN  
MAYOR

## OFFICE OF THE BOARD OF PUBLIC WORKS

200 NORTH SPRING STREET  
ROOM 361, CITY HALL  
LOS ANGELES, CA 90012

JAMES A. GIBSON  
EXECUTIVE OFFICER

GENERAL INFORMATION  
Tel: 213-978-0261 Fax 213-978-0278

## BOARD OF PUBLIC WORKS MEMBERS

VALERIE LYNNE SHAW  
PRESIDENT

ELLEN STEIN  
VICE PRESIDENT

JANICE WOOD  
PRESIDENT PRO-TEMPORE

RONALD LOW  
COMMISSIONER

CYNTHIA M. RUIZ  
COMMISSIONER

September 20, 2004

#1 SL

CD 2

City Council  
Room 395, CH

Subject: SHERMAN WAY AND RANCHITO AVENUE LIGHTING DISTRICT-STREET LIGHTING  
MAINTENANCE ASSESSMENTS PROCESSING CONFORMING TO PROPOSITION 218

As recommended in the accompanying report of the Director of the Bureau of Street Lighting, which this Board has adopted, the Board of Public Works recommends that the City Council adopt this report and the Ordinance of Intention for Sherman Way and Ranchito Avenue Lighting District-Street Lighting Maintenance Assessments, and that the proceedings for this project be conducted in conformance with Proposition 218.

The Board further requests that the City Clerk mail notices of the proceedings, and assessment ballots to property owners, and that the City Clerk count, certify and report the results of the ballot proceedings to the Council.

Respectfully submitted,

James A. Gibson  
Executive Officer  
Board of Public Works

JAG/TS:cg

RECEIVED  
CITY CLERK'S OFFICE

2004 SEP 21 AM 7:34

CITY CLERK  
BY Vm  
DEPUTY

ENGINEER'S REPORT  
FOR THE  
CITY OF LOS ANGELES  
BUREAU OF STREET LIGHTING



REGARDING STREET LIGHTING MAINTENANCE ASSESSMENTS IN THE  
SHERMAN WAY AND RANCHITO AVENUE  
LIGHTING DISTRICT

IN CONFORMANCE WITH PROPOSITION 218

PREPARED July 1, 2004

Group No. 06027

Transmittal No. 4 to the Report of the Board of Public Works

**CITY OF LOS ANGELES  
BUREAU OF STREET LIGHTING**

**ENGINEER'S REPORT**

**Subject:** Description of how the City finances the cost of street lighting maintenance, how these assessments were calculated, and how this complies with Section 4 of Proposition 218, Article XIII D of the California Constitution, in regards to the subject street lighting maintenance assessment district(s).

**Abstract:** The Bureau of Street Lighting, for the Board of Public Works, administers and operates the street lighting system of the City. This includes managing the financing of the system. By Council Policy, about 80% of the streetlights are financed through street lighting maintenance assessments to benefiting properties, and the rest through the LADWP.

Proposition 218, section 4 (b), requires that "...All assessments shall be supported by a detailed engineer's report prepared by a registered professional engineer certified by the State of California..." It further requires in section 4 (f) that "...in any legal action contesting the validity of any assessment, the burden shall be on the agency to demonstrate that the property or properties in question receive a special benefit over and above the benefits conferred on the public at large and that the amount of any contested assessment is proportional to, and no greater than, the benefits conferred on the property or properties in question..."

The purpose of this report is to respond to the specific requirements of Proposition 218 and State law, for the subject street lighting maintenance assessment district(s).

**Prepared by:** Michael Siregar  
Michael Siregar, Prop. 218 Compliance Section Associate I

**Checked by:** Jay Wong  
Jay Wong, P.E., Prop. 218 Compliance Section Associate III

**Approved by:** Norma Marrero, P.E., Senior Street Lighting Engineer, Bureau of Street Lighting

Norma Marrero

R.E. NO. E13696

Date 8/31/04

## CONTENTS

<u>ITEM</u>	<u>PAGE</u>
1. Summary	3
2. Definitions of Special Benefit and General Benefit Street Lighting	3
3. Street Lighting Types and Financing	4
4. How Street Lighting Maintenance Assessments are Calculated	4
5. Assessment Rates	10
6. Specifications For The Operation of Street Lighting Maintenance Assessment District(s)	11
7. Data Entry Sheet(s)	13

### Refer to the Report of the Board of Public Works For The Following Transmittals

1. Ordinance(s) of Intention for the Proposed Assessment District(s)
2. Assessment Diagram(s) for the Proposed Assessment District(s)
3. Assessment Roll(s) for the Proposed Assessment District(s)

#### 1. SUMMARY

On November 5, 1996 the voters of California approved Proposition 218, which became part of the California Constitution. It imposes additional requirements on local government when assessments for street lighting maintenance are proposed. This engineer's report will explain the methodology for the calculation of the assessments, the City's policy between special and general benefit and information about the subject project.

City funding is provided for street lighting, which light tunnels, bridges, and minimal traffic safety lighting installed on wooden power poles. Under City Policy, funding for permanent street lighting, which directly benefits nearby properties, is financed by assessments only.

#### 2. DEFINITIONS OF SPECIAL BENEFIT AND GENERAL BENEFIT STREET LIGHTING

**Special Benefit** is the direct benefit to a property, and to its owner or users, based on the existence of the nearby street lighting systems that is designed to illuminate the roadway and sidewalk adjacent to the specific property at night. When there is a single streetlight in front of or near the property in question, there is special benefit to the extent that the roadway and sidewalk are illuminated, notwithstanding that the street lighting system for the block is incomplete. Proposition 218 allows the assessment of properties which receive special benefit, to the extent that the assessment is not greater than the reasonable cost of the proportional special benefit conferred on those parcels.

**General Benefit** is defined as a benefit to properties in the surrounding community or a benefit to the public in general resulting from the improvements, activities or services to be provided by the

assessment levy. These benefits include the benefit from street lighting systems for locations that do not benefit specific properties, as well as interim lighting for minimal traffic safety on wooden power poles. Proposition 218 requires the City to finance general benefit costs from other than property assessments. These costs are financed from public funds.

The types of lighting that fall into these benefit categories are further outlined below.

### 3. **STREET LIGHTING TYPES AND FINANCING**

There are three types of street lighting in the City of Los Angeles, each with different purposes, physical characteristics and financing modes. The following is a brief description of each:

- A. **SPECIAL BENEFIT** – Special Benefit street light systems are permanent streetlight systems designed to meet City standards of illumination which provide special benefit to nearby properties. These are generally systems with steel or concrete poles, underground wiring, intended to be part of a complete system providing a designed level of illumination and uniformity on the roadway and sidewalk areas. These systems are generally installed through either assessments to nearby benefiting properties, grants or through requirements on private developments, and are owned by the Department of Public Works. The financing of their entire costs of operation and maintenance is through the annual assessment of nearby properties that are determined to receive special benefit. All general benefits, if any, to the surrounding community and public in general from these special benefit streetlight systems are intangible and are not quantifiable.
- B. **GENERAL BENEFIT** - General Benefit lighting systems are permanent street light system and which illuminate vehicular and pedestrian bridges and tunnels and other locations where there are no adjacent or nearby properties which receive direct, special benefit. These are part of a complete system for the structure, or street, providing a designed level of illumination and uniformity on the roadway and sidewalk areas. The financing of their entire costs of operation and maintenance is through public funds and/or Department of Water and Power funds. These systems are generally installed with public funding, and owned by the Department of Public Works.
- C. **UTILITARIAN LIGHTING** - Utilitarian Lighting is a general benefit type of street lighting that is installed, operated and maintained by the Department of Water and Power. These lights are mounted on wooden power poles, and do not have a designed average level of uniformity or illumination.

These lights are considered interim, minimal safety lighting for specific locations where there are no permanent street lighting systems. The costs of operation are financed through the Department of Water and Power.

### 4. **HOW STREET LIGHTING MAINTENANCE ASSESSMENTS ARE CALCULATED**

#### **General**

Based on Council Policy, Los Angeles Administrative Code, annual City Budgets, and assessment proceedings, assessments are for the total estimated amount of the cost of operation and maintenance.

**All costs of street lighting maintenance and operation for the subject lighting systems are to be assessed--none are to be financed with public funds.**

The total estimated amounts of revenues and operating costs for previously assessed parcels are shown in the annual reports for the Los Angeles City Street Lighting Maintenance Assessment District (LACLD). The assessment rates are based on these estimates, which rely on actual costs for previous years, and on historic relationships between the different rates.

Proper maintenance and operation of the streetlight infrastructure benefits all properties within the District by providing security, safety, and community character and vitality.

In addition, Proposition 218, the "Right to Vote on Taxes Act" which was approved on the November 1996 statewide ballot and added Article XIID to the California Constitution, requires that a parcel's assessment may not exceed the reasonable cost for the proportional special benefit conferred on that parcel. Article XIID provides that only special benefits are assessable and the City must separate the general benefits from the special benefits. It also requires that publicly owned properties, which benefit from the improvements, be assessed.

### **Methodology**

The calculation method takes into account the following:

**Benefit Zones** – The type of street lighting system that is installed. These will be identified as benefit zones. These zones may indicate a modern system that provides the minimum illumination levels adopted by the City or may include pedestrian lighting. Each zone requires a certain average energy usage, maintenance and eventual replacement.

**Equivalent Dwelling Units** – The calculation will take into account the different land uses on the properties for comparative purposes. (ex. A vacant property vs. a multiple family property vs. a commercial property.)

**Benefit Factors** – Benefit Factors will define the special benefit associated with the use of the property. Special Benefit Factors will be applied to properties that demonstrate a different use pattern.

**Partial Lighting Factors** – Partial Lighting Factors will define the amount of frontage lit by the streetlights.

**Rates** – The current rates have been set due to the Bureau's current maintenance district. These rates include energy, maintenance, administration and eventual replacement at the end of life.

All these factors will be evaluated and formulated into Benefit Units, utilizing Equivalent Dwelling Units and Benefit Factors, which will then be multiplied by the corresponding rate per the Benefit Zone. The following explains each factor in more detail.

### **Benefit Zones**

Benefit Zones are used to differentiate between the different types of lighting service parcels receive. All parcels served by a similar kind of lighting system spaced a similar distance apart might be considered to be in the same Benefit Zone.

Each benefit zone will have a specific Assessment Rate associated with it, and a parcel can be in more than one benefit zone.

An area with a very high level of lighting, with twice the number of lights installed, could be in a specific benefit zone that would be charged twice the rate of those types of lights. If that area



also included pedestrian lights, it could be in two zones of benefit. Zones may be adjusted due to any identified general benefit component.

For parcels on corners with more than one lit side, the parcel will be zoned per the side that the property takes access.

We have determined that there are five (5) different levels of benefit within the District, and these are distinguished by different zone designations.

The zones identified below are assumed to utilize energy efficient lamps. Any request for lamps that are not energy efficient or require additional maintenance will need to be evaluated and the rate will need to be adjusted accordingly.

Zone 1 – This zone is an ornamental lighting system on residential streets. This lighting system generally is used to illuminate the roadway and sidewalk areas.

Zone 2 – This zone is a modern lighting system on residential streets.

Zone 3 – This zone is a modern lighting system on arterial streets.

Zone 4 – This zone is applied to lighting systems that require additional maintenance or energy than energy efficient lamps. This will apply to metal halide lamps and the zone will be combined with another zone.

Zone 5 – This zone is for special stand alone pedestrian electroliers on arterial streets. The lighting system provides illumination for pedestrian use only. This Zone would be in addition to Zone's 1, 2, 3 or 4.

Zone 6 – This zone is for special pedestrian systems that are attached to existing roadway electroliers. This Zone would be in addition to Zone's 1, 2, 3 or 4.

### **Equivalent Dwelling Units**

In order to allocate benefit fairly between the parcels, an Equivalent Dwelling Unit (EDU) methodology is proposed which equates different residential and non-residential land uses to each other, thereby allowing a uniform method of assessment.

The EDU method uses the single-family home as the basic unit of apportionment. The average single-family residential parcel for the City of Los Angeles has a lot size of approximately 7,500 square feet (sf). This is considered a medium-density single-family residential parcel and has been selected as the basic unit for calculation of assessments; therefore, the medium density single-family residential parcel is defined as one Equivalent Dwelling Unit (EDU).

### **Single Family Residential (SFR) Parcels.**

A medium-density SFR lot equals 1 EDU. All SFR parcels with lot sizes equal to 1/8 acre and up to 1/4 acre (5,445 sf and 10,890 sf) are considered medium density SFR's.

SFR parcels larger than 1/4 acre are considered low density SFR's. Because these parcels are larger than the medium density SFR's, and occupy more street frontage per parcel, it makes sense that there are more street lights associated with these larger parcels; therefore, low density SFR's are assigned 1.25 EDU.

SFR parcels smaller than 1/8 acre are considered high density SFR's. Because these parcels are smaller than the medium density SFR's, and occupy less street frontage per parcel, it makes sense that there are fewer street lights associated with these smaller parcels; therefore, high density SFR's are assigned 0.75 EDU.

### **Other Residential Properties.**

The equivalencies of other residential land uses are determined by multiplying the number of dwelling units on each parcel by EDU Factors that are based on the relative population density of these residential land uses. These factors are based on trip generation rates and estimated wastewater usage, which are both related to population density.

Multi-family Residential (MFR) parcel (Apartments and Condominiums) equivalencies are determined by multiplying the number of dwelling units on each parcel by a factor, which is used to approximate the relative population density of these types of dwelling units and reduced unit size as compared to the typical density and size of a SFR. The MFR parcels are broken into three density categories as follows:

MFR parcels with 1 – 4 dwelling units (duplexes, triplexes, 4-plexes and condominiums) are considered low-density MFR's and are assigned EDU's based on a factor of 0.75 EDU per Dwelling Unit (DU).

MFR parcels with 5 to 15 dwelling units on the property are considered medium density MFR. For these properties, the first 4 DU's are assigned 0.75 EDU/DU and the next 5 to 15 units are assigned 0.5 EDU/DU.

MFR parcels with 16 or more dwelling units on the property are considered to be high-density MFR. The break between medium density and high density is considered to be at 15 dwelling units, because after 15 dwelling units apartment complexes must have a manager on the premises at all times. For these properties, the first 4 DU's are assigned 0.75 EDU/DU, the next 5 to 15 units are assigned 0.5 EDU/DU, and units over 15 are assigned 0.25 EDU/DU.

Mobile Home Park equivalencies are determined by multiplying the number of dwelling units on each parcel by 0.5 due to the relative population density of these types of dwelling units and reduced unit size compared to the typical density and size of a SFR.

### **Non-Residential Parcels.**

Non-residential properties are converted to EDU's using the City of Los Angeles' average size for a SFR lot. As stated above, the average SFR lot is approximately 7,500 sf, which is approximately 6 dwelling units per acre. Therefore, non-residential parcels are assigned 6 EDU per acre or any portion thereof.

Non-residential properties include commercial, industrial, and institutional uses (such as schools, churches and hospitals). Utility properties are assessed the same as non-residential property, and Governmental properties are assessed based on how they are used (this could be residential or non-residential).

### **Vacant Parcels.**

Vacant property consists of parcels with few or no improved structures. Based upon the opinions of professional appraisers, appraising current market property values for real estate in Southern California, the land value portion of a property typically ranges from 20 to 30 percent of the property's total value.

Additionally, the utilization of vacant property is significantly less than improved property and vacant property has a traffic generation rate of 0. Therefore, vacant SFR lots will be assigned 0.25 EDU, and all other vacant parcels (including park and agricultural parcels) will be assigned benefit at the rate of 25% of the non-residential rate, or 1.5 EDU per acre or any portion thereof.

Table 1, below, shows the EDU rates assigned to the various land uses.

<b>TABLE 1 - Equivalent Dwelling Unit (EDU)</b>			
<b>Code</b>	<b>Land Use</b>	<b>Basic Unit</b>	<b>EDU Rate</b>
<b>Single Family Res. (SFR)</b>			
SFRL	SFR - Low Density (larger than 1/4 acre lot or 10,890 sf)	1 D.U.	1.25 EDU / DU
SFRM	SFR - Medium Density (1/8 - 1/4 acre lot)	1 D.U.	1.00 EDU / DU
SFRH	SFR - High Density (less than 1/8 acre lot or 5,445 sf)	1 D.U.	0.75 EDU / DU
SFV	<b>Single Family Vacant</b>	1 Parcel	0.25 EDU / pcl
<b>Multi-family Res. (MFR)</b>			
CNDO	Condominium	1 D.U.	0.75 EDU / DU
MFRL	MFR - Low Density (2 - 4 units)	1 D.U.	0.75 EDU / DU
MFRM	MFR - Medium Density (5 - 15 units)	1 D.U.	3 +0.5 EDU / DU over 4 DU
MFRH	MFR - High Density (16 or more units)	1 D.U.	8.5 +0.25 EDU / DU over 15 DU
MH	<b>Mobile Home Parks</b>	1 D.U.	0.5 EDU / DU
COM	<b>Commercial</b>	1 Acre	6 EDU / ac
INS	<b>Institutional</b>	1 Acre	6 EDU / ac
IND	<b>Industrial</b>	1 Acre	6 EDU / ac
UTL	<b>Utility Properties</b>	1 Acre	6 EDU / ac
PRK	<b>Park</b>	1 Acre	1.5 EDU / ac
VAC	<b>Vacant</b>	1 Acre	1.5 EDU / ac
AGR	<b>Agriculture</b>	1 Acre	1.5 EDU / ac
EXE	<b>Exempt</b>	1 Parcel	0 EDU / pcl

The EDU rates are modified by Benefit Factors and Partial Lighting Factors, and the overall benefit to each property is defined as follows:

$$(\text{Equivalent Dwelling Units}) \times (\text{Benefit Factor}) \times (\text{Partial Lighting Factor}) = \text{Benefit Units}$$

**Benefit Factors**

The EDU rates are modified by Benefit Factors that relate to how a particular land use benefits from streetlights

The amount of benefit received will vary with the different land use on the property. There are two categories from which the total benefit of a parcel is derived:

1. **Security and Safety Benefit.** The prevention of crime and the alleviation of the fear of crime at the assessed properties, and the prevention of local pedestrian and traffic accidents related to the assessed properties.

2. **Community Character and Vitality Benefit.** The promotion of social interaction, promotion of business and industry, and the contribution to a positive night time visual image for the assessed properties.

To assign the benefit factors, each land use is compared to residential properties. Residential properties are the base properties and are assigned benefit factors of 1 for both the "Security and Safety Benefit" and the "Community Character and Vitality Benefit".

Commercial and institutional properties benefit similarly to residential property and therefore are assigned the same benefit factors. Parks, which are assessed as vacant land, also benefit similarly to residential property.

Industrial and utility properties receive benefits from added security and safety, but really receive no benefit for community character and vitality, as the nature of these properties do not promote either.

Likewise, vacant and agriculture properties receive benefits from added security and safety, although not at nearly the level of developed property, but really receive no benefit from additional community character and vitality.

Table 2 provides a summary of the Benefit Factors that are applied.

<b>Table 2 – Street Lighting Benefit Factors</b>							
Land Use	Residential	Res. On Private Street	Commercial	Institutional	Industrial / Utility	Park	Vacant / Agriculture
Security and Safety	1.0	0.25	1.0	1.0	1.0	1.0	0.25
Community Character and Vitality	1.0	0.25	1.0	0.5	0.0	1.0	0.00
Subtotal:	2.0	0.50	2.0	1.5	1.0	2.0	0.25
<b>Applied Benefit Factor:</b>	<b>1.0</b>	<b>0.25</b>	<b>1.0</b>	<b>0.75</b>	<b>0.5</b>	<b>1.0</b>	<b>0.125</b>

**Partial Lighting Factors**

The EDU rates are further modified by Partial Lighting Factors that take into consideration the amount of frontage lit by the streetlights. If almost the entire frontage of a parcel is lit, then the Partial Lighting Factor is 1.0. If the frontage of a parcel is not fully lit, then a Partial Lighting Factor of 0.75, 0.50 or 0.25 will be applied depending on the percentage of frontage lit.

## 5. ASSESSMENT RATES

Based on 2004/05 estimated annual budget, the following table provides the Maximum Assessment Rates for each of the Zones:

ZONE	ADMIN & Eng.	Energy (ECA, Utility Users Tax)	Replacement	Repair	Tree Trim	Total BU	Total FY 2004-05 Maximum \$/BU *
1	\$541,745	\$ 1,175,461.83	\$450,130	\$548,859	\$120,264	34,343.44	\$82.59
2	\$6,008,929	\$10,636,819.25	\$4,992,757	\$6,087,840	\$1,333,943	474,857.79	\$61.20
3	\$2,252,888	\$ 4,622,360.97	\$1,871,902	\$2,282,474	\$500,126	84,486.29	\$136.47
4	\$5,967	\$ 315,887.76	\$0	\$6,045	\$0	15,182.44	\$21.60
5	\$205,715	\$ 536,528.47	\$170,926	\$208,416	\$45,667	13,273.31	\$87.94
6	\$762	\$ 297,504.72	\$14,284	\$772	\$0	6,336.65	\$47.21
<b>TOTAL</b>	<b>\$9,016,006</b>	<b>\$17,584,563</b>	<b>\$7,500,000</b>	<b>\$9,134,407</b>	<b>\$2,000,000</b>		<b>\$45,234,970</b>

\*The maximum annual maintenance assessment rates will be increased each year by 2%, not to exceed the annual change in the Consumer Price Index (CPI) for all Urban Consumers for the Los Angeles, Riverside, Orange County Areas.

The actual assessments levied in any fiscal year will be as approved by the City Council and may not exceed the maximum assessment rate without receiving property owner approval for increase.

The actual annual assessment rates for each Zone will be calculated each year based on the estimated costs of operating and maintaining the street lighting system in the following fiscal year.

**The funding source to repair and maintain the City of Los Angeles' general benefit lights are not included in the estimated annual budget.**

### Assessment Calculation for a Parcel

Benefit Units = (Equivalent Dwelling Units) x (Benefit Factor) x (Partial Lighting Factor)

Assessment Cost = (Zone Assessment Rate) x (Benefit Units)

For parcels with mixed use, such as a commercial / residential combination, the benefit units are calculated for each use separately, and the higher of the two calculations will be used.

**It is our conclusion that the proposed street lighting maintenance assessments follow the methodology described above.**

**SPECIFICATIONS FOR THE OPERATION OF  
STREET LIGHTING MAINTENANCE DISTRICTS  
IN THE CITY OF LOS ANGELES  
FOR 2004-05**

**WORK TO BE DONE.** The work and improvement to be done shall be the operation, including furnishing electric energy and timing/switching; maintenance, including lamp changing, emergency services, pole painting, fixture cleaning and glassware replacement, and rehabilitation, which includes modernization and replacement of systems; repairs, including poles, conduit, wiring and fusing, and fixtures repair and replacement; management of the funds, records, engineering, equipment approval and testing, administration and assessments, buildings, vehicles, equipment and materials; and related activities for the street lighting system designated herein under the "MAINTENANCE ASSESSMENT DISTRICT," for the fiscal year ending June 30, 2005, in accordance with the report of the Board of Public Works therefore, on file in the office of the City Clerk.

**AUTHORITY.** The said work and improvement is to be made under and is to be governed in all particulars by the Charter of the City of Los Angeles, Section 580 and other sections; the Los Angeles Administrative Code, Section 6.95-6.127; Proposition 218 (Articles XIII C and XIII D of the California Constitution), and the Ordinance of Intention to be hereafter adopted therefore.

**LIGHTING SYSTEM.** The street lighting system consists of electroliers, luminaires, and lamps, together with the necessary conduits, cables, wires and other appurtenances. Plans showing the location and description of said equipment are on file in the office of the Bureau of Street Lighting and are hereby referred to and made a part of these specifications. The properties to be benefited by the work and improvement are designated in the assessment diagrams on file in the office of the Bureau of Street Lighting, Assessment Engineering Division, and are hereby referred to and made a part of the specifications.

**OPERATION SCHEDULES.** The lighting system shall be lighted in accordance with the All Night and 1:00 a.m. schedules of operation, and minor exceptions, as agreed upon by the Department of Public Works and the Department of Water and Power, or other utility suppliers.

**ELECTRIC ENERGY.** It is contemplated that the City of Los Angeles, through its Department of Public Works, will purchase electric energy as it may deem necessary from the Department of Water and Power, or other utility suppliers, in accordance with the terms, conditions, and rates prescribed for in such services as have been agreed upon by the Board of Public Works and the utility supplier, and approved by the City Council.

**MAINTENANCE.** The Department of Public Works will itself perform the work, or will contract for certain work with the Department of Water and Power, or private companies, in providing normal maintenance for the following district(s), in accordance with the terms, and conditions as prescribed for in such services as have been agreed upon by the Board of Public Works and the supplier, and approved by the City Council.

**MAINTENANCE ASSESSMENT DISTRICT TITLE**

Sherman Way and Ranchito Avenue Lighting District

REPAIRS. The Department of Public Works, will itself perform the repair work, or will contract for certain work with private companies, provide the materials, equipment and expense, appliances, and other appurtenances and appurtenant work necessary to repair the street lighting system. This may also require approval by the City Council.

SHERMAN WAY & RANCHITO AVE. LIGHTING DISTRICT

CITY ASS'MNT ID NO	COUNTY ASSESSOR'S NUMBER	12 MONTH ASSESSMENT DUE TO NEW DISTRICT							12 MONTH ASSESSMENT EXISTING			NOTE
		LAND USE	ACREAGE	DWELLING UNITS	BENEFIT ZONE	PRIVATE STREET	ASSESSMENT	PERCENT OF TOTAL	CITY BPP	BENEFIT FOOTAGE	ASS'MNT	
1	2216-005-003	SFR	0.13	1	2	No	\$61.20	5.71%				
2	2216-039-011	SFR	0.14	1	2	No	\$61.20	5.71%				
3	2216-039-010	SFR	0.14	1	2	No	\$61.20	5.71%				
4	2216-039-013	MFR	0.23	6	2	No	\$244.80	22.86%	17-5147-001	60' / C	\$146.95	
5	2216-005-029	MFR	0.02	1	2	No	\$45.90	4.29%	17-5147-040	5.5' / C	\$13.48	
5	2216-005-030	MFR	0.02	1	2	No	\$45.90	4.29%	17-5147-041	5.5' / C	\$13.47	
5	2216-005-031	MFR	0.02	1	2	No	\$45.90	4.29%	17-5147-042	5.5' / C	\$13.47	
5	2216-005-032	MFR	0.02	1	2	No	\$45.90	4.29%	17-5147-043	5.5' / C	\$13.47	
5	2216-005-033	MFR	0.02	1	2	No	\$45.90	4.29%	17-5147-044	5.5' / C	\$13.47	
5	2216-005-034	MFR	0.02	1	2	No	\$45.90	4.29%	17-5147-045	5.5' / C	\$13.47	
5	2216-005-035	MFR	0.02	1	2	No	\$45.90	4.29%	17-5147-046	5.5' / C	\$13.47	A, B
5	2216-005-036	MFR	0.02	1	2	No	\$45.90	4.29%	17-5147-047	5.5' / C	\$13.47	
5	2216-005-037	MFR	0.02	1	2	No	\$45.90	4.29%	17-5147-048	5.5' / C	\$13.47	
5	2216-005-038	MFR	0.02	1	2	No	\$45.90	4.29%	17-5147-049	5.5' / C	\$13.47	
5	2216-005-039	MFR	0.02	1	2	No	\$45.90	4.29%	17-5147-050	5.5' / C	\$13.47	
5	2216-005-040	MFR	0.02	1	2	No	\$45.90	4.29%	17-5147-051	5.5' / C	\$13.47	
5	2216-005-041	MFR	0.02	1	2	No	\$45.90	4.29%	17-5147-052	5.5' / C	\$13.47	
5	2216-005-042	MFR	0.02	1	2	No	\$45.90	4.29%	17-5147-053	5.5' / C	\$13.47	
<b>TOTAL # VOTING PARCELS:</b>		18					<b>TOTALS:</b>	<b>\$1,071.00</b>	100%			

NOTES: A) New assessment will replace existing assessment.  
 B) 14-unit condominium complex.

13



COUNCIL VOTE

Mar 4, 2005 11:55:38 AM, #7

ITEM(S)

Voting on Item(s): 3,11,12,13,14,15,16

Roll Call

CARDENAS	Yes
*GARCETTI	Yes
GREUEL	Yes
HAHN	Yes
LABONGE	Yes
LUDLOW	Yes
MISCIKOWSKI	Absent
PARKS	Absent
PERRY	Absent
REYES	Yes
SMITH	Yes
VILLARAIGOSA	Yes
WEISS	Yes
ZINE	Yes
PADILLA	Yes

Present: 12, Yes: 12 No: 0



COUNCIL VOTE

Mar 4, 2005 11:55:31 AM, #6

ITEM(S)

Voting on Item(s): 3,11,12,13,14,15,16

Roll Call

CARDENAS	Yes
*GARCETTI	Yes
GREUEL	Yes
HAHN	Yes
LABONGE	Yes
LUDLOW	Yes
MISCIKOWSKI	Absent
PARKS	Absent
PERRY	Absent
REYES	Yes
SMITH	Yes
VILLARAIGOSA	Yes
WEISS	Yes
ZINE	Yes
PADILLA	Yes

Present: 12, Yes: 12 No: 0

*reconsidered*

COUNCIL VOTE

Mar 4, 2005 10:44:08 AM, #3

Items for Which Public Hearings Have Not Been Held - Items 11-25

Voting on Item(s): 11-25

Roll Call

CARDENAS	Absent
GARCETTI	Yes
GREUEL	Yes
HAHN	Yes
LABONGE	Yes
LUDLOW	Yes
MISCIKOWSKI	Absent
PARKS	Absent
PERRY	Yes
REYES	Yes
SMITH	Yes
VILLARAIGOSA	Yes
WEISS	Absent
ZINE	Yes
*PADILLA	Yes

Present: 11, Yes: 11 No: 0

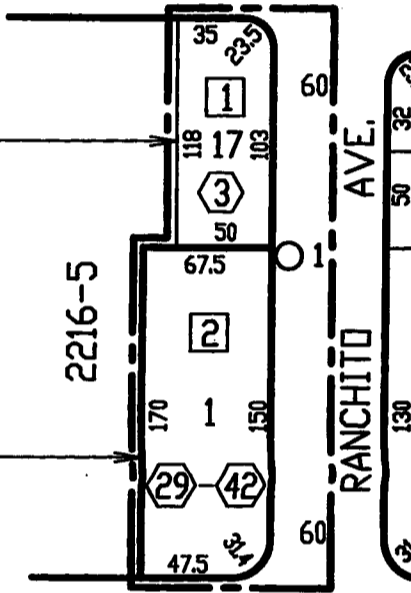
54 CANTLAY

TR. NO. 17806  
M.B. 447-28-30

2216-5

TR. NO. 38194  
M.B. 1061-65-67

100 SHERMAN



**MAINTENANCE ASSESSMENT DIAGRAM  
FOR PROPOSITION 218 REQUIREMENTS  
SHOWING LOCATION OF ELECTROLIERS AND THE  
EXTENT OF THE TERRITORY INCLUDED WITHIN THE  
ASSESSMENT DISTRICT**

FOR THE FURNISHING OF ELECTRIC ENERGY & MAINTENANCE FOR  
THE LIGHTING OF SAID DISTRICT IN THE CITY OF LOS ANGELES

PHIL REED, DIRECTOR - BUREAU OF STREET LIGHTING  
THE EXTERIOR BOUNDARIES OF THE ASSESSMENT DISTRICT ARE SHOWN

----- NEW BOUNDARY

APPROVED BY THE CITY COUNCIL \_\_\_\_\_

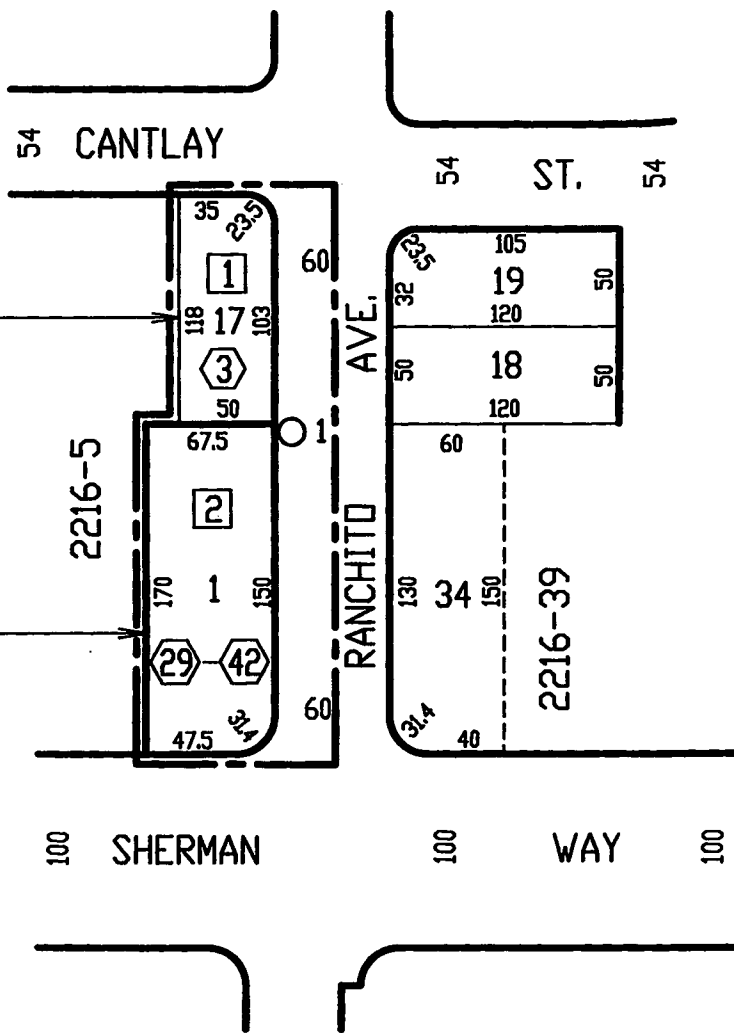
\_\_\_\_\_  
CITY CLERK BY \_\_\_\_\_ DEPUTY CITY CLERK

COUNCIL FILE NO. \_\_\_\_\_

Grid	Revision Description	Date	by

TR. NO. 17806  
M.B. 447-28-30

TR. NO. 38194  
M.B. 1061-65-67



RAM  
ENTS  
THE  
THE

ITENANCE FOR  
DS ANGELES

LIGHTING  
E SHOWN

TY

- ⬡ Indicates L.A. County APN
- ⬢ Indicates L.A. City Assessment Number
- Indicates New Electrolier CD851A 100W HPS B.Z. 2
- Indicates Adjacent System

DUPLY CITY CLERK

Grid	Revision Description	Date	by

Title **SHERMAN WAY & RAN**



SHERMAN WAY & RANCHITO AVE. (REBALLOT) L.D.

2216

0190-22