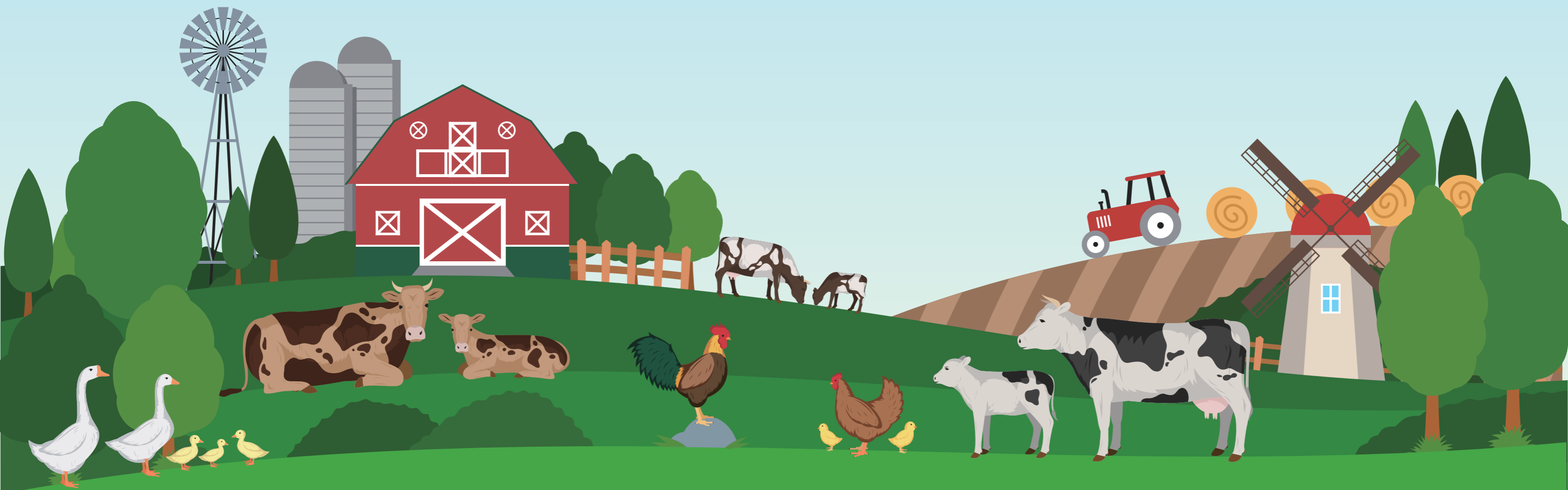


Choongangbiotech
Products Guide



CHOONGANGBIOTECH CO.,LTD.

271-30, Gangchon-ro, Danwon-gu, Ansan-si, Gyeonggi-do, Korea
Tel : +82-31-493-1466 / Fax : +82-31-493-1469
www.choongangbio.com/en
E-mail : sean@choongangbio.com



G.M.P.

CHOONGANGBIOTECH CO.,LTD.

Company history

1971~	1971	Established ChoongAng Pharmaceutical Industry
1980~1988	1980	Registered ChoongAng Chemical Co., Ltd.
	1984	New factory construction in Ansan city
	1986	First production of Live Yeast Culture "CYC" in Korea
	1988	Awarded one million dollar export trophy in 25 th exporting date
1993~1999	1993	Obtained KGMP certificate for animal medicine
	1995	Awarded five million dollars export trophy in 32 nd exporting date
	1996	Opened Research Institute
	1998	Appointed as Venture company
	1999	Changed company name to ChoongAng Biotech Co., Ltd.
2000~2020	2013	Participated in KISTOCK International Exhibition
	2014	Participated in VIV China International Exhibition opened in Beijing
	2020	Merged with SRB Group

Product categories

Category	Product Name
Multi-Nutrients	Permasol-500, Permasol Liquid, Yubiso, Power-C, Choong Ang Hepa-Health
Live Yeast Culture	CYC-100, CYC Plus, Super CYC
Cocciostat	Coccirol-S, Coccirol-S Liquid, Choongang Coccirol, Amprol Liquid-200, Decox, Coccijoa, Cocciline Liquid 25g
Antibiotics & Antimicrobial	Ampi-coli, Ery-Sulfa, Egg & Chick Tonic, Tiamix 39, Methomix-W.P, Methomix-Plus, All-Treat Forte 200, Resflor 200 Sol., Choongang Ampicillin Gold-W.P, Flormix 40, Tiamulin Liquid, Tylo-100, Pulmoxy 200, Tilmopos 25
General Therapeutics	Acetaphen-Powder, Broncool Plus
Anthelmintic	P-Mectin Premix, Levamisol Powder
Disinfectant	Viricide
Insecticide	Cyper Killer, Cyperfos, Larvicide, Ringworm Killer
Pet Care Products	Heartsaver Tablet, Heartsaver Chewable
Injection	P-Mectin, Choongang Cetio, Hemoplus



MULTI-NUTRIENTS



PERMASOL-500

Features & Effectiveness

- Granule type Multi vitamins + Minerals + Amino acid.
- Solubility is very excellent in water so absorption force by animal is very high
- Prevention of nutritional deficiency.
- Improvement of feed efficiency, hatchability, fertility and egg production.
- Reducing mortality in stressful conditions.
- Promotion of immunity against disease.

Composition

Each 1kg contains
Vitamin A 5,000,000 IU, Vitamin D3, E, K3, B1, B2, B6, B12,
Ca-pantothenate, Niacin Amide, Folic acid, DL-Methionine, Co, Mn,
Fe, K, Na, Zn

Dosage & Administration method

- * Administered via drinking water (for oral administration)
- * Chicken (1,000 birds per day)

	Growth promotion increase egg production	Prevention of disease and stress	Aid of disease treatment
Chick starter	5g	15g	150g
Chick grower	10g	25g	200g
Layer	15g	25g	150g
Broiler	10g	25g	200g

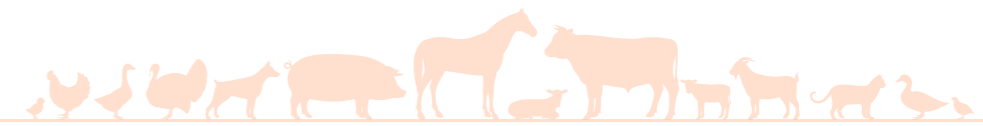
* Swine (Day per head)

Body Weight	Dose
2 ~ 14 kg	1.5g
15 ~ 70 kg	4g
70kg ~	5g

- * Cattle : 5g/100kg body weight per day
- * Administered via feed : 2kg per ton of feed.

Withdrawal period None

Package 1kg



PERMASOL LIQUID

Features & Effectiveness

- * Cattle, Swine, Chicken :
- The supplement of nutritional(Vitamin, Mineral, Amino acid) deficiency.
- The improvement of feed efficiency and increase egg production.
- Anti-stress effect and promotion of immunity against disease.
- * Fish :
- The supplement of nutritional(Vitamins, Minerals, Amino acids) deficiency.

Composition

Each 1L contains
Vitamin A 5,000,000 IU, Vitamin D3, E, K3, B1, B2, B6, B12, Niacin Amide,
Methionine, Folic Acid, Co, Mn, K, Na, Zn, Se, Ca-pantothenate,
L-Lysine HCl, L-Threonine, L-Valine, L-Isoleucine, Polysorbate-80

Dosage & Administration method

- * Administered via drinking water (for oral administration)
- * Chicken (1,000 birds per day)

	The improvement of feed efficiency and increase egg production	Anti-stress effect and promotion of immunity against disease	The supplement of nutritional(Vitamin, Mineral, Amino acid) deficiency
Chick starter	5ml	15ml	150ml
Chick grower	10ml	25ml	200ml
Layer	15ml	25ml	150ml
Broiler	10ml	25ml	200ml

* Swine (Day per head)

Body	Dose
2 ~ 14 kg	1.5ml
15 ~ 70 kg	4ml
70kg ~	5ml

* Cattle (Day per head)

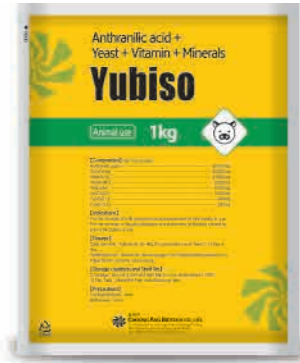
Cattle	Dose
Calf	4~6ml
Dairy cattle	10~25ml
Growth cattle	10~15ml

- * Fish : Administer 1~2L per ton of drinking water.

Withdrawal period None

Package 1L, 5L

MULTI-NUTRIENTS



YUBISO

Features & Effectiveness

- Accelerator for sow milk
- For the increase of milk production and improvement of milk quality in sow
- For the increase of disease resistance and prevention of diarrhea caused by poor milk quality of sow

Composition

Each 1kg contains
 Anthranilic acid 30,000mg
 Dried Yeast 50,000mg
 Vitamin B12, Fe, Zn, Cu, Co

Dosage & Administration method

- Daily use level : Administer 30~40g for a pregnant sow in feed 2~3 times a day.
- Feeding period : Administer above dosage from 10 days before parturition to 5days before weaning continuously.

Withdrawal period 63 days

Package 1kg



POWER-C

Features & Effectiveness

- It is a neutral liquid oral vitamin and easy to use and absorbs quickly.
- Sorbitol gives a refreshing sensation to promote recovery by increasing feed intake during periods of low feed intake and infection of diseases.
- Relieve environmental stress (heat, vaccination, transportation, dense breeding, etc.), promote vitality
- Heat stress relief.
- For increase feed intake and helps to relieve stress

Composition

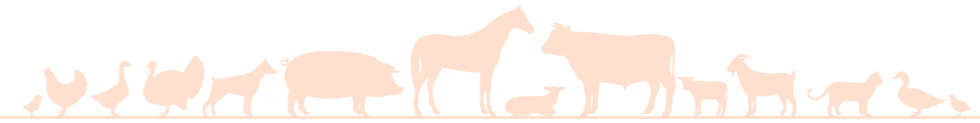
Each 1L contains
 Vitamin C 200g
 Betaine 300g
 Sorbitol 200g

Dosage & Administration method

Administer 1~2L per ton of water

Withdrawal period None

Package 5L



CHOONGANG HEPA-HEALTH

Features & Effectiveness

- Target species : Horse, cattle, sheep, goat, pig, chicken, dog, cat
- Promoting appetite, Energy supply, Diuretic action, Restore appetite after stress, Increased sow turnover, Fattening improvement
 - Preservation of health and reproductive life span, Higher egg yield, Higher hatching rate, Enhanced egg yield.

Composition

Each 1L contains
 • L-Carnitine 50g • Magnesium sulfate 250g
 • Sorbitol 20g • Propylene glycol 50g

Dosage & Administration method

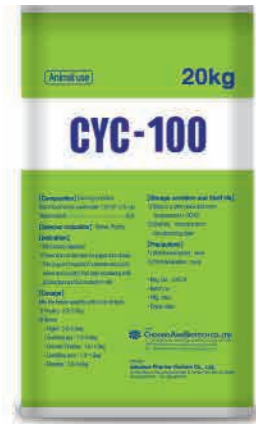
Administered via drinking water or spray on feed.

Target species		Prevention	Treatment
Horse, cattle	adult	20ml/day, 10 consecutive days	50ml/day, 5 consecutive days
	youth	15ml/day, Once a week	20ml/day, 5 consecutive days
Sheep, goat	adult	3ml/day, 10 consecutive days	10ml/day, 5 consecutive days
	youth	1ml/day, 10 consecutive days	5ml/day, 5 consecutive days
pig	adult	15ml/day, 10 consecutive days	40ml/day, 5 consecutive days
	youth	1ml/day, 10 consecutive days	2ml/day, 5 consecutive days
chicken		1ml/1L of drinking water, 5days	2ml/1L of drinking water, 5days
dog, cat		1~2ml/day, 10 consecutive days	2~5ml/day, 10 consecutive days

Withdrawal period None

Package 5L

LIVE YEAST CULTURE



CYC-100

Features & Effectiveness

- To improve feed efficiency and weight gain.

Composition Each 1kg contains
 • Saccharomyces cerevisiae 1.5×10¹¹ c.f.u up
 Yeast culture q,s

Dosage & Administration method

Mix the below quantity with a ton of feed.

Dairy Cattle	Calf : 2.0~2.5kg Lactating cow : 1.0~2.5kg Dry cow : 1.0~1.5kg
Pig	Piglet : 2.0~2.5kg Grower, Finisher : 1.0~1.5kg Lactating Sow : 1.0~1.5kg Breeder : 2.0~2.5kg
Poultry	2.0~2.5kg / Ton of Feed
Beef Cattle	Calf : 2.0~2.5kg Grower : 1.5~2.0kg Starter, finisher : 1.0~1.5kg

Withdrawal period None

Package 20kg



CYC PLUS

Features & Effectiveness

- To improve feed efficiency and weight gain.

Composition Each 1kg contains
 • Saccharomyces cerevisiae 1.5×10¹¹ c.f.u up
 Cellulase 50,000 unit, Yeast culture q,s

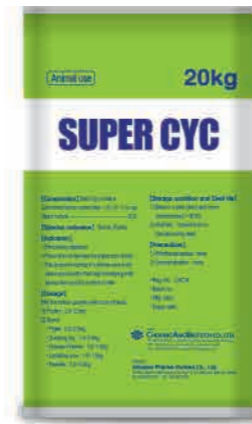
Dosage & Administration method

Mix the below quantity with a ton of feed.

Poultry	2.0~2.5kg
Pig	Prestarter : 2.0~2.5kg Starter : 1.5~2.0kg Grower, Finisher : 1.0~1.5kg Lactating Sow : 1.0~1.5kg Breeder, Pregnant sow : 2.0~2.5kg
Dairy Cattle	Calf : 2.0~2.5kg Drying Cattle : 1.0~1.5kg Milking Cattle : 1.0~2.5kg
Silage	500g per Ton of Feed
Horse	2.0~2.5kg
Rabbit, Fox, Dog, Mink	2.0~2.5kg
Beef Cattle	Calf : 2.0~2.5kg Grower : 1.5~2.0kg Starter, finisher : 1.0~1.5kg
Sheep, Goat	1.0~2.5kg

Withdrawal period None

Package 20kg



SUPER CYC

Features & Effectiveness

- Improved feed efficiency, Improved weight gain, More Milk production, More egg production, Odor reduction of animal waste.

Composition Each 1kg contains
 Bacillus subtilis 1.0×10⁹ c.f.u up
 Live Yeast culture q,s, DL-methionine 8,6g

Dosage & Administration method

Mix the below quantity with a ton of feed.

Cattle, House	0.1% ~ 0.4%
Pig	0.1% ~ 0.5%
Poultry	0.1% ~ 0.4%

Withdrawal period None

Package 20kg

COCCIDIOSTAT



COCCIROL-S

Features & Effectiveness

- For the treatment of infectious disease caused by bacteria sensitive to Sulfaquinoxaline and Amprolium
- For the treatment of coccidiosis of chicken

Composition Each 1kg contains
 Amprolium Hydrochloride 166.7g
 Sulfaquinoxaline Sodium 166.7g
 Excipient q,s.

Dosage & Administration method

Administer 0,6g of Coccirol-S into 1L of drinking water for 7 consecutive days

Withdrawal period 10 days

Package 1kg



COCCIROL-S LIQUID

Features & Effectiveness

- For the treatment of infectious disease caused by bacteria sensitive to Sulfaquinoxaline and Amprolium
- For the treatment of coccidiosis of chicken

Composition Each 1L contains
 Amprolium Hydrochloride 166.7g
 Sulfaquinoxaline Sodium 166.7g
 Polysorbate-80 20g
 N-Methylpyrrolidone 180g
 Povidone 7g
 Sodium Hydroxide 35g
 Purified water q,s

Dosage & Administration method

Administer 0,6mL of Coccirol-S Liquid into 1L of drinking water for 7 consecutive days

Withdrawal period 10 days

Package 1L



CHOONGANG COCCIROL

Features & Effectiveness

Treatment and prevention of acute and chronic coccidiosis of poultry.

Composition

Each 1kg contains
 Amprolium Hydrochloride 200g
 Excipient Q,S

Dosage & Administration method

For the prevention : 0,03% water solution
 For the treatment : 0,06~0,12% water solution

Withdrawal period

None

Package

1kg



AMPROL LIQUID-200

Features & Effectiveness

Prevention and treatment of coccidiosis in chicken and turkey

Composition

Each 1L contains
 Amprolium Hydrochloride 200g
 Purified water Q,S

Dosage & Administration method

1. Treatment of coccidiosis: dilute 6ml /10L of drinking water for 3~5 days orally.
2. Treatment of coccidiosis(severe case): 12ml/10L of drinking water for 3~5 days orally.
3. Coccidium vaccination : 2,5~3ml /10L of drinking water for 48 hours orally after 10 days of vaccination

Withdrawal period

1 day

Package

1L



DECOX

Features & Effectiveness

For the treatment and prevention of coccidiosis of chicken.

Composition

Each 1L contains
 Toltrazuril 25g
 Polyethylene glycol-400 560g
 Triethanolamine 216g

Dosage & Administration method

Administer 100ml per 100L of drinking water for 2 days and administer once after 5 days, if need.

Withdrawal period

16 days

Package

100ml, 500ml, 1L



COCCIJOA

Features & Effectiveness

For the prevention and treatment of coccidiosis of chicken.

Composition

Each 1L contains
 Amprolium Hydrochloride 240g
 Ethopabate 15,2g

Dosage & Administration method

Oral administration in drinking water

- 1) severe case treatment : Dilute at the ratio of 1L of product per 1ton of drinking water and administer for 5~7 days.
 Again, dilute at the ratio of 250mL of product per 1 ton of drinking water and administer for 14 days.
- 2) mild case treatment : Dilute at the ratio of 500mL of product per 1ton of drinking water and administer for 5~7 days.
 Again, dilute at the ratio of 250mL of product per 1ton of drinking water and administer for 14 days.
- 3) prevention : Dilute at the ratio of 250mL of product per 1ton of drinking water and administer for the required period.

Withdrawal period

Chicken(1 day)

Package

1L

COCCIDIOSTAT



COCCILINE LIQUID 25g

Coccidiosis is a parasitic disease of the intestinal tract of animals caused by coccidian protozoa. The disease spreads from one animal to another by contact with infected feces or ingestion of infected tissue. Diarrhea, which may become bloody in severe cases, is the primary symptom. Most animals infected with coccidia are asymptomatic, but young or immunocompromised animals may suffer severe symptoms and death.

Features & Effectiveness

For treatment of Coccidiosis in chicken

Composition

Each 1L contains
Diclazuril 25g

Dosage & Administration method

Oral administration in drinking water
5~10ml/100L(or 0.05~0.1ml/b.w 1kg/day) of drinking water for 2days.

Withdrawal period

Chicken(5 days)

Package

1L

ANTIBIOTICS & ANTIMICROBIAL



AMPI-COLI

Features & Effectiveness

Treatment of infectious disease by bacteria sensitive to Ampicillin and Colistin as below.

- Calf : Escherichia coli, Pasteurella multocida
- Pigs : Escherichia coli, Pasteurella multocida, Actinobacillus pleuropneumoniae, Staphylococcus aureus
- Chicken : Escherichia coli, Staphylococcus aureus

Composition

Each 1kg contains
Ampicillin Trihydrate 100g(Act.)
Colistin sulfate 250,000,000 IU(Act.)
Coloring agent Q,S
Glucose Q,S

Dosage & Administration method

For oral administration
• 50g per 100L drinking water for 5 consecutive days.
• Mix at the rate of 0.1% in feed for 5 consecutive days.

Withdrawal period

7 days

Package

100g



ERY-SULFA

Features & Effectiveness

For the treatment of infectious disease caused by bacteria sensitive to Erythromycin, Sulfadiazine and Trimethoprim.

- 1) Chicken
 - For the treatment of Colibacillosis(Enteritis, E.Coli)
 - For the treatment of Salmonellosis(Pullorum disease, Fowl typhoid, Salmonella pullorum, Salmonella gallinarum)
 - For the treatment of Fowl cholera(Pasteurella multocida)
 - For the treatment of Mycoplasmosis(Mycoplasma gallisepticum)
- 2) Calf
 - For the treatment of Colibacillosis(Enteritis, Septicemia, E.Coli)

Composition

Each 1kg contains
Erythromycin Thiocyanate 90g(Act.)
Sulfadiazine sodium 75g(Act.)
Trimethoprim 15g

Dosage & Administration method

For oral administration
Chicken : 1g/L of drinking water/day, PO, for 5 days.
Calf : 0.3g/kg of body weight/day, PO, for 3~5 days.

Withdrawal period

5 days

Package

100g



EGG & CHICK TONIC

Features & Effectiveness

- Helps on stress condition(stress of movement, rehusing, vaccination and change of feed),
- To improve feed utilization and absorption of nutrients,
- To increase egg production,
- To improve egg shell quality and carcass quality,
- Prevent or Reduce Early chicks Mortality and ensure healthy growth.

Composition

Each 1kg contains
 Oxytetracycline HCl 55,000mg, Vit A 6,500,000IU, Vit D3 1,200,000IU, Vit E 2,500IU, Vit K3 1,000mg
 Vit B1 400mg, Vit B2 3,000mg, Vit B6 1,000mg, Vit B12 3mg, Vit C 10,000mg, Ca-pantothenate 5,000mg
 Folic Acid 200mg, Nicotinic acid 6,000mg, DL-Methionie 16,000mg

Dosage & Administration method

For oral administration

- During period of stress : 25g in 60L of drinking water, 3-5 consecutive days,
- For growth and increasing egg production : 25g in 20~30L of drinking water, 3-5 consecutive days,

Withdrawal period

None

Package

100g



TIAMIX 39

Features & Effectiveness

- For improvement of growth promotion and feed efficiency in chicken, swine,
- For prevention and treatment of bacterial diarrhea like swine dysentery,
- For prevention and treatment of bacterial pneumonia like mycoplasma disease in swine,
- For prevention and treatment of CRD in chicken,

Composition

Each 1kg contains
 Tiamulin Hydrogen Fumarate 39g

Dosage & Administration method

For oral administration

Mix thoroughly the product per M/T of feed at the ratio of following and administer

1. Growth promotion and feed efficiency in chicken, swine : 0.25~1 kg (10~39ppm)
2. Bacterial diarrhea like swine dysentery and bacterial pneumonia like mycoplasma disease in swine :
 (1) prevention : 1,254kg(48,75ppm)
 (2) treatment : 5kg(195ppm)

Withdrawal period

5 days

Package

1kg, 5kg



METHOMIX- WATER SOLUBLE POWDER

Features & Effectiveness

- Swine : For the prevention and treatment of Colibacillosis, Enterotoxemia, Bronchopneumonia, A,R, and MMA,
- Poultry : For the prevention and treatment of CRD, Infectious coryza, Fowl cholera, Staphylococcosis and Salpingitis,

Composition

Each 1kg contains
 Sulfachloropyridazine sodium 100g
 Trimethoprim20g

Dosage & Administration method

Administered via drinking water

- Swine : Duration of treatment 5~7 consecutive days

	Body Weight(kg)	g/10L of drinking water
Suckling piglet	5~10	20~35g
Weanling piglet	10~25	10~20g
Fattner	25~100	20~30g
Breeding sow	over 120	-
Lactating sow	over 120	10~20g

- Poultry : Duration of treatment 3~6 consecutive days

	Age in weeks	g/10L of drinking water
Chick	less 1	5
Broiler	1~4	10
	5~8	15
Breeder	1~8	10
	9~20	15
Layer	over 20	15

Withdrawal period

7 days

Package

100g, 1kg



METHOMIX-PLUS

Features & Effectiveness

- Swine : For the prevention and treatment of Colibacillosis, enterotoxemia, bacterial scours, enzootic pneumonia, bronchopneumonia
- Chicken : For the prevention and treatment of air-sac disease, Coli-septicaemia, Salpingitis, Staphylococcal infection.

Composition

Each 1kg contains
 Sulfachloropyridazine Sodium 200g
 Trimethoprim 40g

Dosage & Administration method

Administer recommended dosage into feed or drinking water according to 100mg per body-weight for 1day

- 1) pig : For the treatment at high dose for 5~10 days

	body weight(kg)	dose(kg)	
		kg/ton of feed	kg/ton of drinking water
weaning piglet	5~12	2~2.4	0.5~0.6
Grower	12~25	2.4~2.5	0.6~0.85
fattening pigs	25~100	2.5~3.35	0.85~1.65
Breeding sow	175	5.85~8.75	1.15~1.75
Lactating sow	200	3.35~4	0.65~1

- 2) Chicken : For the treatment at high dose for 3~6 days

	Age(wks)	dose	
		g/100L of drinking water	kg/ton of feed
Broiler	1~4	50g	0.75kg
	5~8	75g	1.25kg
Breeder	1~8	50g	1.0kg
	9~20	75g	1.5kg
Layer	>20	75g	1.25kg

Withdrawal period

7 days

Package

1kg

ANTIBIOTICS & ANTIMICROBIAL



ALL-TREAT FORTE 200

Features & Effectiveness

- A therapeutic agent for bacterial diseases with excellent stability and efficacy
- It does not use organic acid as a solvent and improves solubility and absorption ability than general Quinolone drugs, and reaches the effective antibacterial concentration in blood in a short time
- High sensitivity to Salmonella, Escherichia coli and Mycoplasma than general Quinolone drugs (about 10 times higher than Salmonella and 4 times higher than E. coli)
 - Chicken : CRD, CCRD, E.Coli, Salmonellosis(S.gallinarum)
 - Duck : Infection due to Riemerella,anatipesipestifer

Composition

Each 1L contains
Enrofloxacin 200g

Dosage & Administration method

Administer 25ml/100L of drinking water for 3 days orally (For salmonella: administration for 5 days)

Withdrawal period

12 days

Package

1L



RESFLOR 200 SOL

Features & Effectiveness

For prevention and treatment of the respiratory disease caused by bacteria sensitive to Florfenicol in pig and poultry

- Poultry : Salmonellosis, Colibacillosis
- Pig : Actinobacillus pleuropneumoniae, Pneumonic Pasteurellosis, Mycoplasma spp., Salmonellosis, Streptococcosis

Composition

Each 1L contains
Florfenicol 200.0g
Propylene glycol 412.5g
Polysorbate-80 107.0g
Propyl parahydroxy benzoate 0.3g
Methyl parahydroxy benzoate 0.7g

Dosage & Administration method

Administer the following dosage as drinking water for 5 days.

- Poultry : 0.5ml per 1 liter of drinking water or 0.1ml(as Florfenicol 20mg) per 1kg body weight.
- Pig : 0.5ml per 1 liter of drinking water or 0.05ml(as Florfenicol 10mg) per 1kg body weight.

Withdrawal period

• poultry-2 days • pigs-16 days

Package

500ml, 1L



CHOONGANG AMPICILLIN GOLD WATER SOLUBLE POWDER

Features & Effectiveness

- It has sterilizing effect on causative bacteria of various diseases, and maintains blood concentration for a long time.
- Target species : Calf, Chicken, Pig
- Calf : Bacterial diarrhea
- Chicken : E.coli
- Pig : Bacterial diarrhea

Composition

Each 1kg contains
Ampicillin Hydrate 200g(Act.)
Glucose..... Q.S

Dosage & Administration method

- Calf : 2~7.5 g of product per 100kg of b.w (400~1,500mg as Ampicillin)
- Chicken : 0.5~1g of product per 10kg of b.w (100~200mg as Ampicillin)
- Pig : 0.25~ 1 g of product per 10kg of b.w (50~200mg as Ampicillin)

Withdrawal period

• calf, pig : 5 days • chicken : 3 days

Package

1kg



FLORMIX 40

Features & Effectiveness

Treatment and prevention of Actinobacillus pleuropneumonia in swine

Composition

Each 1kg contains
Florfenicol 40g

Dosage & Administration method

Oral administration 0.5~1kg(20~40g as Florfenicol)/ton of feed.

Withdrawal period

3 days

Package

1kg, 20kg



TIAMULIN LIQUID

Features & Effectiveness

Prevention and treatment for the bacterial disease susceptible to Tiamulin

- 1) Prevention and treatment for Swine dysentery and Bacterial pneumonia in swine.
- 2) Prevention and treatment for Mycoplasma infection in poultry.

Composition

Each 1L contains
 Tiamulin hydrogen fumarate 125g
 Ethyl alcohol 200ml

Dosage & Administration method

Administer following dosage in drinking water

- 1) For poultry: administer 100ml of Tiamulin Liquid into 50~100 liter of drinking water for 3~5 consecutive days
- 2) For swine: administer 100ml of Tiamulin Liquid into 210~280 liter of drinking water for 3~5 consecutive days.

Withdrawal period

7 days

Package

1L



TYLO-100

Features & Effectiveness

Treatment of bacterial disease sensitive to Tylosin.

- 1, Swine
 - 1) Prevention and treatment of Mycoplasma hyopneumoniae.
 - 2) Prevention and treatment of Lawsonia intracellularis.
 - 3) Prevention of Serpulina hydysentery.
- 2, Cattle(Breeder)
 - Prevention of Fusobacterium necrophorum

Composition

Each 1kg contains
 Tylosin phosphate 100g(Act.)

Dosage & Administration method

Oral administration

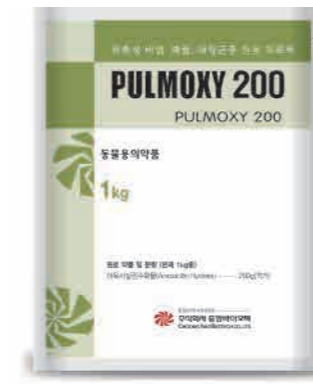
- 1, Swine
 - 1) Prevention
 - Piglet : 220~1,100g/ton of feed.
 - Grower, Finisher : 220~440g/ton of feed.
 - 2) Treatment :
 - Mycoplasma hyopneumoniae, Lawsonia intracellularis: 1.1kg/ton of feed for 21 days.
- 2, Cattle(Breeder) : 88~110g/ton of feed

Withdrawal period

None

Package

5kg



PULMOXY 200

Features & Effectiveness

Pulmoxy 200 is a semisynthetic broad-spectrum penicillin which is effective for the prevention and treatment of respiratory, alimentary, genital and dermal diseases which are caused by E. coli, N. gonorrhoeae, S. haemolyticus and enterococci.

- Broad-spectrum activity against causative pathogens of respiratory, alimentary, genital and dermal diseases.
- Amoxycillin is better absorbed in the intestines than ampicillin and diffuses rapidly into blood with a long half-life. Therefore the treatment effect is reliable.
- Its bactericidal activity against various disease causing agents yielding complete treatment and control.

Treatment of bacterial disease sensitive to Amoxicillin

- Chicken : colibacillosis
- Swine, Calves : diarrhea caused by E. coli, pneumonia, leuropneumonia and atrophic rhinitis.

Composition

Each 1kg contains
 Amoxicillin Hydrate200g(Act.)

Dosage & Administration method

Oral administration

- Cattle, Pig : Administer twice a day at dose of 15~50mg/kg(body weight)/day.
- Chicken : Administer 50~250mg/kg(body weight)/day

Withdrawal period

- Cattle : 20 days
- Swine, chicken : 15 days

Package

1kg



TILMOPOS 25

Features & Effectiveness

Treatment of infectious disease by bacteria sensitive to Tilmicosin as below.

- Swine : Pasteurella multocida, Actinobacillus pleuropneumoniae, Mycoplasma hyopneumoniae
- Poultry : Mycoplasma gallisepticum, Mycoplasma synoviae

Composition

Each 1L contains
 Tilmicosin phosphate 250g(Act.)
 Phosphoric acid 58.82g
 Propylene glycol 150g

Dosage & Administration method

Oral administration

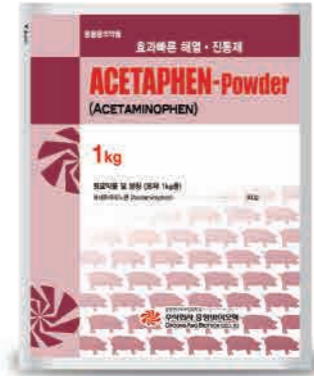
- Pig : Dissolve 0.8ml/1l(as tilmicosin 200mg) of drinking water and administration for 5 days.
- Chicken : Dissolve 0.3ml/1l(as tilmicosin 75mg) of drinking water and administration for 3~5 days.

Withdrawal period

- Pig : 7 days
- Chicken : 10 days

Package

1L



ACETAPHEN - POWDER

Features & Effectiveness

- It is a fast and safe antipyretic analgesic.
- From the onset of the reason to the last day of the reason, there is a pronounced weight gain effect.
 - Swine : Antipyretic, Analgesic and Anti-Inflammatory Action

Composition Each 1kg contains
 Acetaminophen 300g

Dosage & Administration method

- Oral administration
 Add 50~100mg per 1kg b.w. of drinking water or feed, dilute well and orally administer for 3~5 days.
- 1) Feed : 0,5~1kg per ton of feed
 - 2) Drinking water : 0,5~1kg per 10kg body weight for 1day

Body weight	drinking water(More than 50°C)	Acetaphen-powder
10kg	300ml	0,5~1g
100kg	300ml	5~10g
1000kg	3L	50~100g

Withdrawal period None

Package 1kg



BRONCOOL PLUS

Features & Effectiveness

1. Treatment of respiratory inflammatory or infectious diseases such as rhinitis, laryngotracheitis, bronchopneumonia and pneumonia in chicken.
2. Treatment of inflammatory diseases such as pneumonia, bronchitis, rhinitis, laryngitis and tonsillitis in swine.

Composition Each 1L contains
 Phenylbutazone 50g
 Bromhexine Hydrochloride 10g

Dosage & Administration method

- Oral administration
- Poultry : 0,5ml/L of drinking water for 7 days.
 - Swine : 0,5ml/L of drinking water for 7 days.

Withdrawal period

- Swine : 7 days
- chicken : 5 days

Package 1L

ANTHELMINTIC



P-MECTIN PREMIX

Features & Effectiveness

For the treatment & prevention of internal & external parasites of swine.
P-mectin is indicated for treatment of the following parasites of swine. Control of gastrointestinal round worms, kidney worms, lungworms, lice and mange mites.

Composition

Each 1kg contains
Ivermectin 6g

Dosage & Administration method

Administer recommended dosage into feed for 7 consecutive days.

Species of animals	Feed intake	Recommended Dosage	
		Ivermectin Activity(ppm)	Inclusion rate per ton of feed
Suckling pigs(~40kg)	50 g/kg B.W.	2.0	333 g/ton of feed
Fattening pigs(40~100kg)	42 g/kg B.W.	2.4	400 g/ton of feed
Sow	200kg	2.0 kg/day	10.0
		2.5 kg/day	8.0
		3.0 kg/day	6.7
Boar	250kg	2.5 kg/day	10.0
		3.0 kg/day	8.3

Withdrawal period 28 days

Package 1kg



LEVAMISOL POWDER

Features & Effectiveness

To treat animals infected with the following worms :
•Poultry : Heterakis gallinarum, round worms,
•Swine : Large round worms, Nodular worms, lung worms, intestinal threadworms and swine kidney worms.
•Cattle, Sheep : Gastrointestinal worms, lung worms, stomach worms and intestinal worms.

Composition

Each 1kg contains
Levamisole HCl 100g

Dosage & Administration method

Administered via drinking water(Per oral)
•Poultry : 0.2~0.3g/kg body weight.
•Swine : 1g per 15~20kg, 2g per 35~40kg, 3.5g per 60~70kg, 5g per 100kg body weight.
•Cattle, Sheep : 7.5g/100kg body weight.

Withdrawal period 5 days

Package 1kg

DISINFECTANT



VIRICIDE

Features & Effectiveness

- For disinfection of general bacteria, Virus and mold, FMD Virus.
- For disinfection of stall and utensils.
- For disinfection of pollution areas and vehicles.

Composition

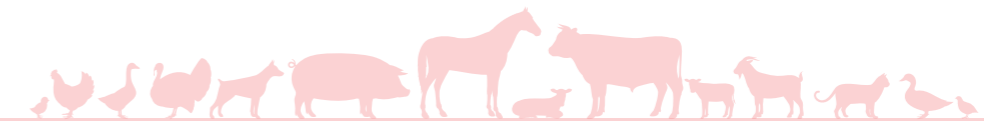
Each 1L contains
Glutaraldehyde 100g

Dosage & Administration method

Mix 100ml in 10L of water and apply the solution at 300ml per m²

Withdrawal period None

Package 1L, 18L



CYPER KILLER

Features & Effectiveness

For the control of house fly, mosquitoes, tick, lice, bed bug, flea, mite.

Composition

Each 1kg contains
Cypermethrin 250g

Dosage & Administration method

- For the control of fly and mosquito
Dissolve 30g in 10L of water and apply the solution to 180m² of surface.
- For the control of lice, flea and bed bug
Dissolve 60g in 10L of water and apply the solution to 300m² of surface.
- For the control of tick in cattle
Dissolve 30g in 50L of water and apply the solution to body surface of animal.
- For the control of Mange in cattle
Dissolve 30g in 100L of water and apply the solution body surface.
- For the control of mite in chicken
Dissolve 30g in 15~60L of water and apply the solution to body surface.

Withdrawal period

7 days (Do not use within 7 days before slaughter)

Package 30g



CYPERFOS

Features & Effectiveness

For get rid of every species a fly, a mosquito and a cockroach, a tick, ant, a mange in stall

Composition

Each 1L contains
Cypermethrin 200g
Chlorpyrifos 200g

Dosage & Administration method

- Extermination of flying insect : 50ml/6~40L per water, dilute
- Extermination of crawling insect : 50ml/6~20L per water, dilute
- Electric power spray : 50ml/40~160ℓ, dilute

Withdrawal period None

Package 500ml, 1L



LARVICIDE

Features & Effectiveness

For fly control in and around poultry.

Composition

Each 1kg contains
Cyromazine 10g

Dosage & Administration method

Oral administration
100~500g per a ton of feed.

Withdrawal period 3 days for poultry

Package 20kg



RINGWORM KILLER

Features & Effectiveness

Treatment of ringworm disease due to Trichophyton verrucosum.

Composition

Each 1L contains
Resorcinol 50g
Salicylic acid 50g

Dosage & Administration method

Spray more than 20ml per lesion of 20cm diameter every 2 days for 10 days.

Withdrawal period None

Package 500ml



HEARTSAVER TABLET

Features & Effectiveness

For the prevention of canine heartworm disease of heartworm larvae (*Dirofilaria immitis*) and for the control of ascarids (*Toxocara canis*, *Toxascaris leonina*) and hookworms (*Ancylostoma caninum*, *Uncinaria stenocephala*, *Ancylostoma braziliense*)

Composition

Each 1 tablet contains

Ingredient	Contents (each tablet contains)			
	Orange	Yellow	Pink	Red
Ivermectin	34mcg	68mcg	136mcg	272mcg
Pyrantel pamoate	81mg (Pyrantel 28.5mg)	163mg (Pyrantel 57mg)	326mg (Pyrantel 114mg)	652mg (Pyrantel 227mg)
Excipients	q.s.	q.s.	q.s.	q.s.

Dosage & Administration method

Administer one proper tablet per month for 12 consecutive months. HEARTSAVER TABLET should be administered orally at monthly (30 days) intervals at the recommended minimum dose level of 6.0 µg of ivermectin per kg and 5mg pyrantel per kg of body weight. The recommended dosing schedule for prevention of canine heartworm disease and for the treatment and control of ascarids and hookworms is as follows :

Dog weight	Tablets per month	Ivermectin	Pyrantel pamoate	Color coding on Foil-Backing and carton
Up to 5.6kg	1	34mcg	81mg (Pyrantel 28.5mg)	Orange
Up to 11kg	1	68mcg	163mg (Pyrantel 57mg)	Yellow
12 ~ 22kg	1	136mcg	326mg (Pyrantel 114mg)	Pink
23 ~ 45kg	1	272mcg	652mg (Pyrantel 227mg)	Red

Withdrawal period None

Package 1 pack (10 tablets)



HEARTSAVER CHEWABLE

Features & Effectiveness

For the prevention of canine heartworm disease of heartworm larvae (*Dirofilaria immitis*) and for the control of ascarids (*Toxocara canis*, *Toxascaris leonina*) and hookworms (*Ancylostoma caninum*, *Uncinaria stenocephala*, *Ancylostoma braziliense*)

Composition

Each 1 chewable tablet contains

Ingredient	Contents (each chewable tablet contains)			
	Mini	Small	Medium	Large
Ivermectin	34mcg	68mcg	136mcg	272mcg
Pyrantel pamoate	81mg (Pyrantel 28.5mg)	163mg (Pyrantel 57mg)	326mg (Pyrantel 114mg)	652mg (Pyrantel 227mg)
Excipients	q.s.	q.s.	q.s.	q.s.

Dosage & Administration method

Administer one proper chewable per month for 12 consecutive months. HEARTSAVER Chewable should be administered orally at monthly (30 days) intervals at the recommended minimum dose level of 6.0 µg of ivermectin per kg and 5mg pyrantel per kg of body weight. The recommended dosing schedule for prevention of canine heartworm disease and for the treatment and control of ascarids and hookworms is as follows :

Dog weight	Chewable per month	Ivermectin	Pyrantel pamoate	Color coding on Foil-Backing and carton
Up to 5.6kg (Mini)	1	34mcg	81mg (Pyrantel 28.5mg)	Orange
Up to 11kg (Small)	1	68mcg	163mg (Pyrantel 57mg)	Yellow
12kg~22kg (Medium)	1	136mcg	326mg (Pyrantel 114mg)	Green
23kg~45kg (Large)	1	272mcg	652mg (Pyrantel 227mg)	Red

Withdrawal period None

Package 1 pack (6 chewable tablets)

INJECTION



P-MECTIN INJECTION

Features & Effectiveness

Control of gastrointestinal round worms, kidney worms, lungworms, lice and mange mites.

Composition

Each 1ml contains Ivermectin 1.0% W/V

Dosage & Administration method

Subcutaneous injection in the neck at the rate of 1ml per 33kg body weight.

- Swine : 1ml per 33kg body weight (Subcutaneous injection in the neck)
- Cattle : 1ml per 50kg body weight (Subcutaneous injection in the shoulder)

Withdrawal period

Swine : 28 days, Cattle : 35 days

Package

100ml



CHOONGANG CETIO INJECTION

Features & Effectiveness

Treatment of Bacterial Diseases Sensitive to Ceftiofur

- 1) Cattle
 - Treatment of Respiratory Disease (Shipping fever, Bacterial Pneumonia) by Mannheimia haemolytica, Pasteurella multocida, Haemophilus somnus
 - Treatment of Acute interdigital Necrobacillosis (Foot rot, Dermatitis verrucosa) by Fusobacterium necrophorum, Bacteriodes melanogenicus
- 2) Pig : Treatment of Respiratory Disease by (Pleural Pneumonia, Pasteurella Pneumonia) Actinobacillus pleuropneumoniae, Pasteurella multocida, Streptococcus suis

Composition

Each 1g contains Ceftiofur sodium 1,000mg(Act.)

Dosage & Administration method

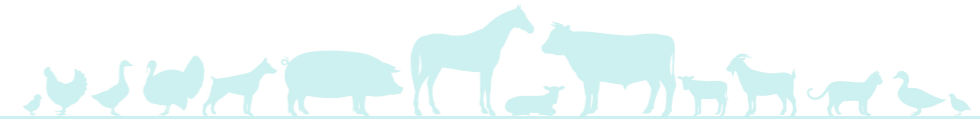
- 1) Cattle : Dissolved 1g(Act.) in 20ml of distilled water for injection and administer 1ml(50mg as ceftiofur) of Choongang Cetio Injection per 50kg b.w via IM injection per day. However, if symptoms do not improve, it can be administered up to 5 days.
- 2) Pig : Dissolved 1g(Act.) in 20ml of distilled water for injection and administer 0.6~1ml(30~50mg as ceftiofur) of Choongang Cetio Injection per 10kg b.w via IM injection per day.

Withdrawal period

• Cattle : 3 days • Pig : 1 day • Milk : 12 hours

Package

5g(Act.), 10g(Act.)



HEMOPLUS

Features & Effectiveness

Hemo-Plus is indicated in cases of prevention and treatment of anemia, caused by lack of iron in piglets and calves. Iron deficiency anemia occurs commonly in the suckling pig, often within the first few days following birth. As body size and blood volume increase rapidly from the first few days following birth, hemoglobin levels in the blood fall due to diminishing iron reserves which cannot be replaced adequately from iron in the sow's milk. This natural deficiency lowers the resistance of the pig, and scour, pneumonia or other infections may develop and lead to death of the animal.

- For prevention and treatment of anemia due to iron deficiency, parasitic anemia and anemia due to piroplasma.

Composition

Each 1ml contains Iron (Iron III hydroxide-dextran complex) 100mg(Act.)
Cyanocobalamine (Vit-B12) 100mcg(Act.)

Dosage & Administration method

Inject intramuscularly deep with dose as follows

Pig	piglet(~7days after birth)	1ml
	growing pig	1~2ml
	Sow & Boar	3~4ml
Dogs		1ml
Horse, Cattle		4~8ml

Withdrawal period

None

Package

100ml

